

觀塘污水泵房優化工程

Enhancement Works for Kwun Tong Sewage Pumping Station

為配合未來東九龍發展，渠務署現正為觀塘污水泵房進行優化工程。泵房位置鄰近觀塘繞道及偉業街，工程已於 2017 年年底展開，預計於 2022 年年底完成。此通訊提供最新的工程進度及相關的資訊。

To cater for future development of East Kowloon, the Drainage Services Department (DSD) is carrying out enhancement works at the Kwun Tong Sewage Pumping Station (KTSPS), which is situated near Kwun Tong Bypass and Wai Yip Street. The enhancement works commenced in late 2017 and are scheduled for completion in end 2022. This newsletter provides the latest information on the progress of construction and related information of the project.

工程進度 Progress of works



工程施工程序 Construction Sequence of the Project

- | | |
|--|--------------------------|
| ➤ 圍封工地
Enclosure of Site Area | ✓ |
| ➤ 土地勘測
Ground Investigation | ✓ |
| ➤ 地下設施改道
Diversion of Underground Utilities | ✓ |
| ➤ 建造樁柱和地基
Construction of Piles and Foundation | ✓ |
| ➤ 進行開挖並建造臨時支撐
Construction of ELS and Excavation for Balancing Tank | 進行中
In progress |
| ➤ 建造污水調節池及附屬設施
Construction of Balancing Tank and its Associated Facilities | 進行中
In progress |
| ➤ 建造園景平台
Construction of Landscaped Deck | <input type="checkbox"/> |
| ➤ 安裝通風系統及辟味設施
Installation of Ventilation System and Deodorization Facilities | <input type="checkbox"/> |
| ➤ 建造連接道路及其他配套設施
Construction of the Connecting Roads and the Ancillary Works | <input type="checkbox"/> |
| ➤ 測試相關機電設備
Testing of Associated E&M Equipment | <input type="checkbox"/> |
| ➤ 美化園景平台及裝設遊樂設備
Beautification of Landscaped Deck and Installation of Playground Facilities | <input type="checkbox"/> |
| ➤ 完成測試
Testing & Commissioning | <input type="checkbox"/> |

開放予市民使用 Open to Public



上圖為最新的工地範圍鳥瞰圖。

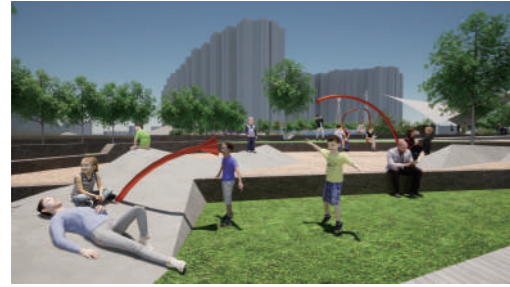
The aerial photo above shows the latest general view of the construction site.



遊戲區一 Play Zone 1

既是一個遙望維港的觀景平台，也是兒童進行社交扮演遊戲的舞台。由最高的觀眾席到最底的平台，你可以用走的、爬的、滑的方法，當然也可以坐下來休息。

The amphitheater acts as a lookout to the sea, and a space for children's socio-dramatic play. You may walk, crawl, climb, slide to the bottom of the stage, or just sit down and relax.



幾何小山丘 Little Mountain

主要遊樂體驗

Main Play Experience



遊戲區三 Play Zone 3

兒童可以利用具彈力的大型戶外彈床從地面躍進半空，也可以在樹梢間的繩網與樹木結伴而行。

Children may jump on the Bouncing Clouds to reach to the sky, or walk with the trees on the treetop nets at the highest area of the deck.



大型戶外彈床 Bouncing Clouds

主要遊樂體驗

Main Play Experience



遊戲區五 Play Zone 5

爬上樹屋或親樹平台可以俯瞰園景，從高處滑下來可以嬉水，讓兒童充份運用所有感官。

Children's sensory are fully engaged, they may climb to the top of tree house or tree deck to overlook the landscape, they may also take the slide and enjoy the aquatic play features.

主要遊樂體驗

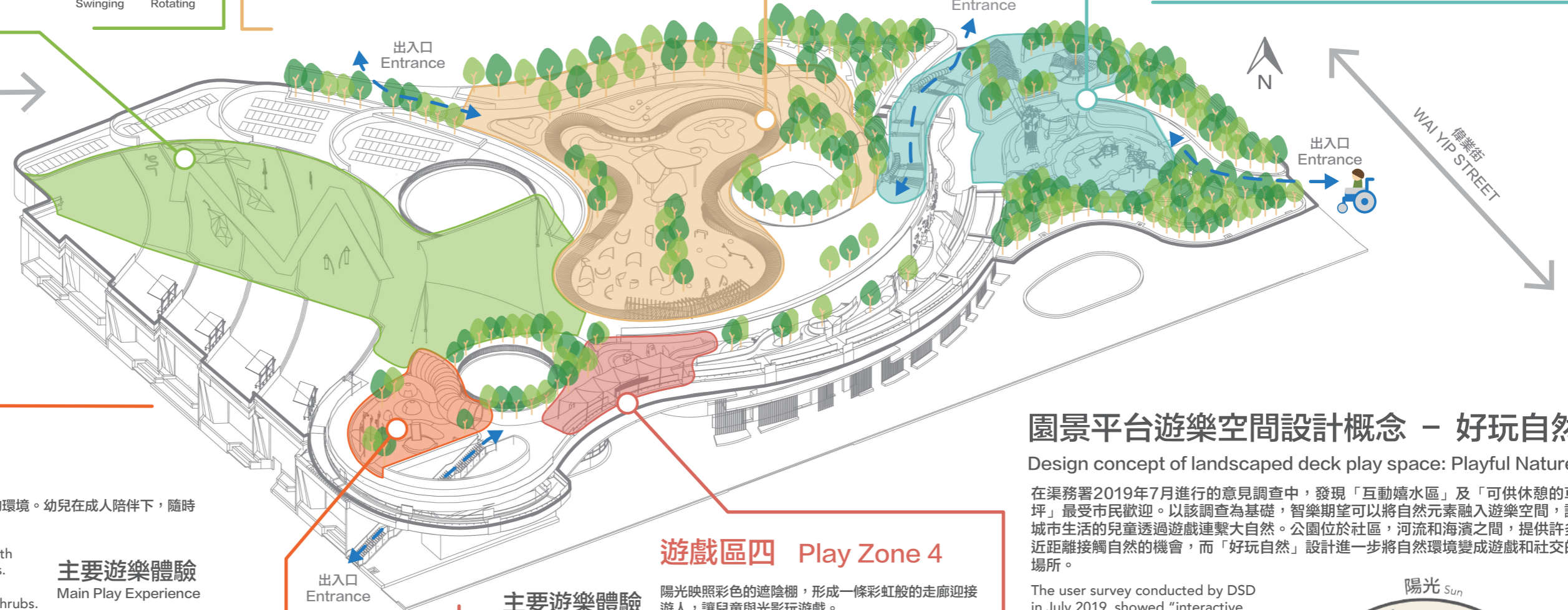
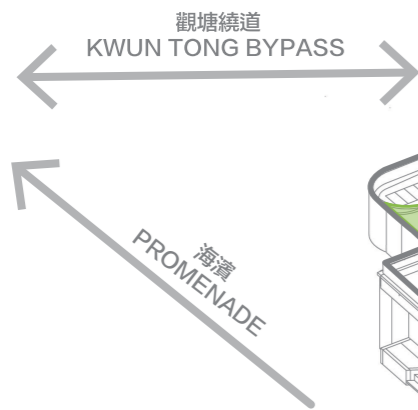
Main Play Experience



嬉水區 Water Garden



親樹平台 Tree Deck



遊戲區二 Play Zone 2

由草丘、風車和小屋等，組成一個寧靜舒適的環境。幼兒在成人陪伴下，隨時在沙池中和灌木叢間開展一個小小的冒險。

This is a quiet and harmonic environment with grass mound, wind pavilion and small cabins. Toddlers and caretakers may start a small adventure at the sandpit and between the shrubs.



草叢躲貓貓 Natural Hideout

主要遊樂體驗

Main Play Experience



遊戲區四 Play Zone 4

陽光映照彩色的遮陰棚，形成一條彩虹般的走廊迎接遊人，讓兒童與光影玩遊戲。

Sunlight goes through a colorful shelter, create a rainbow-like pathway, an excellent spot for playing with light and shadow.



彩虹隧道 Rainbow Tunnel

主要遊樂體驗

Main Play Experience



園景平台遊樂空間設計概念 - 好玩自然

Design concept of landscaped deck play space: Playful Nature

在渠務署2019年7月進行的意見調查中，發現「互動嬉水區」及「可供休憩的草坪」最受市民歡迎。以該調查為基礎，智樂期望可以將自然元素融入遊樂空間，讓城市生活的兒童透過遊戲連繫大自然。公園位於社區，河流和海濱之間，提供許多近距離接觸自然的機會，而「好玩自然」設計進一步將自然環境變成遊戲和社交的場所。

The user survey conducted by DSD in July 2019, showed "interactive water feature" and "amenity lawn" are most welcomed by users. Based on the result, Playright wishes to integrate natural elements with play space, and help children living in urban setting to use play to reconnect with the nature.

The park is close to the neighbourhood, the river and the promenade, providing a lot of opportunities to make close contact with the nature. The Playful Nature design ride on its advantage and transform the natural environment into a place for play and social interaction.



*設計概念及預想圖由智樂兒童遊樂協會提供 (2020年8月版)

The design concept and rendering are presented by Playright Children's Play Association (2020 August Edition)



渠務署

Drainage Services Department



聆聽持份者意見 Engaging our Neighbours



渠務署及工程團隊分別於 2020 年 5 月 22 日、7 月 15 日及 8 月 20 日，向李煒琳議員及其團隊；洪駿軒議員、梁翊婷議員、鄭景陽議員；觀塘區議會地區設施管理委員會主席黃子健議員及副主席王嘉盈議員，講解觀塘污水泵房優化工程的進度，並收集他們對園景平台設計的意見（包括主題、佈局，以及提供的遊樂設施與休憩設施等）。

The Drainage Services Department and the project team updated the project progress with Kwun Tong District Council member Mr. Li Wai-lam and his team; Mr. Hung Chun-hin, Ms. Leung Yik-ting and Mr. Cheng Keng-ieong; Mr. Wong Chi-ken and Ms. Wong

Ka-ying (Chairman and Vice-chairman of the District Facilities Management Committee of Kwun Tong District Council), and obtained their views (such as the theme, layout, play and recreational facilities to be provided etc.) on the project in 22nd May, 15th July and 20th August 2020 respectively.

聯絡我們 Contact Us

合約編號 Contract No.	DC/2017/05
承建商 Contractor	 中國地質工程集團有限公司 CHINA GEO-ENGINEERING CORPORATION 中國地質工程集團有限公司 China Geo-Engineering Corporation
工程諮詢熱線 Project Hotline	6466 2466
電郵 Email	pro@dc201705.com.hk
工程顧問 Consultants	 阿特金斯顧問有限公司 Atkins China Limited Member of the SNC-Lavalin Group