



# 觀塘污水泵房優化工程

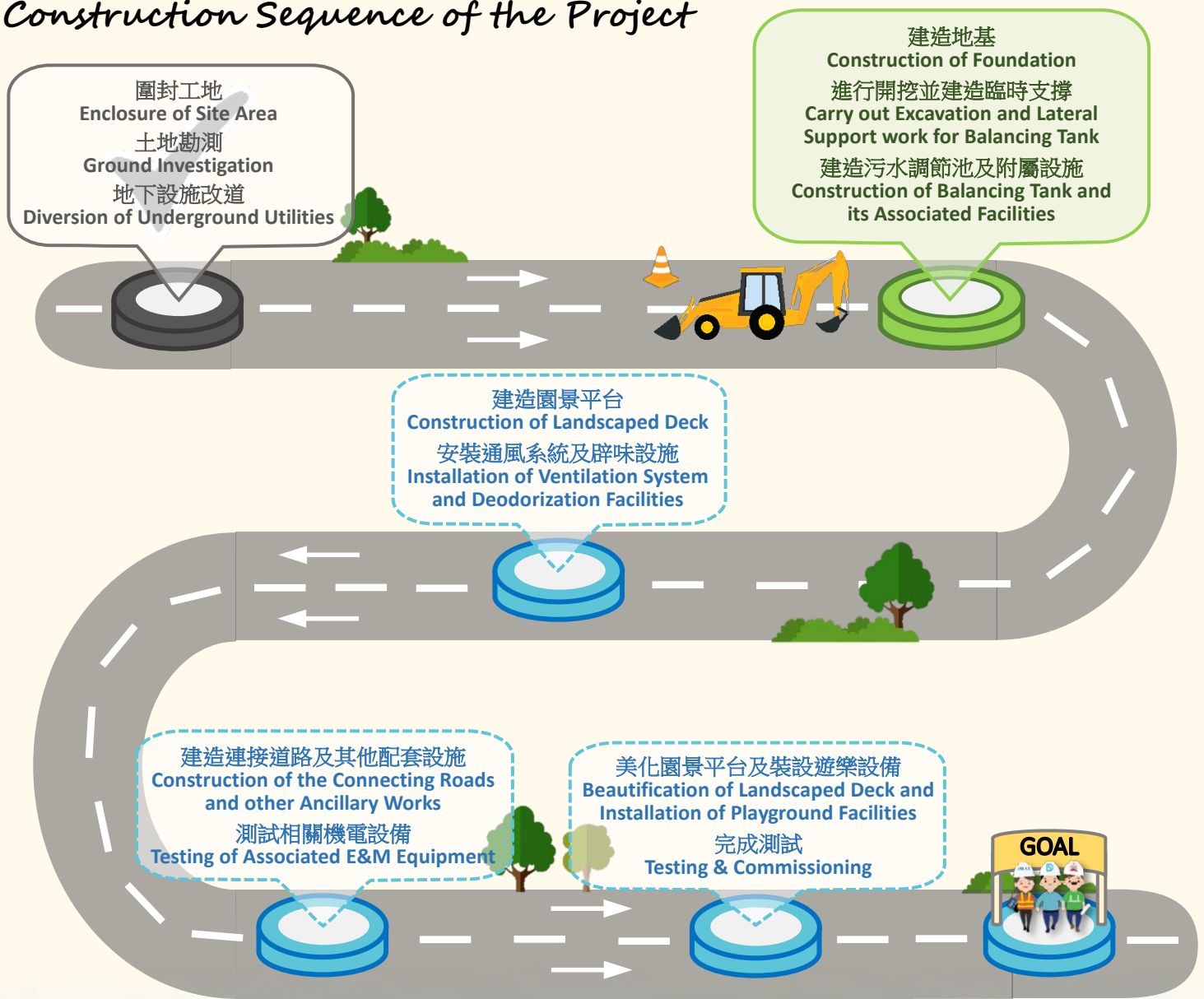
## Enhancement Works for Kwun Tong Sewage Pumping Station

為配合未來東九龍發展，渠務署現正為觀塘污水泵房進行優化工程。泵房位置鄰近觀塘繞道及偉業街，工程已於 2017 年年底展開，預計於 2022 年年底完成。此通訊會提供最新的工程進度及相關的資訊。

To cater for future development of East Kowloon, the Drainage Services Department (DSD) will enhance the Kwun Tong Sewage Pumping Station (KTSPS), which is situated near Kwun Tong Bypass and Wai Yip Street. The enhancement works have commenced in late 2017 and are scheduled for completion in end 2022. This newsletter provides the latest information on the progress of construction and related information of the project.

### 工程施工程序

### Construction Sequence of the Project



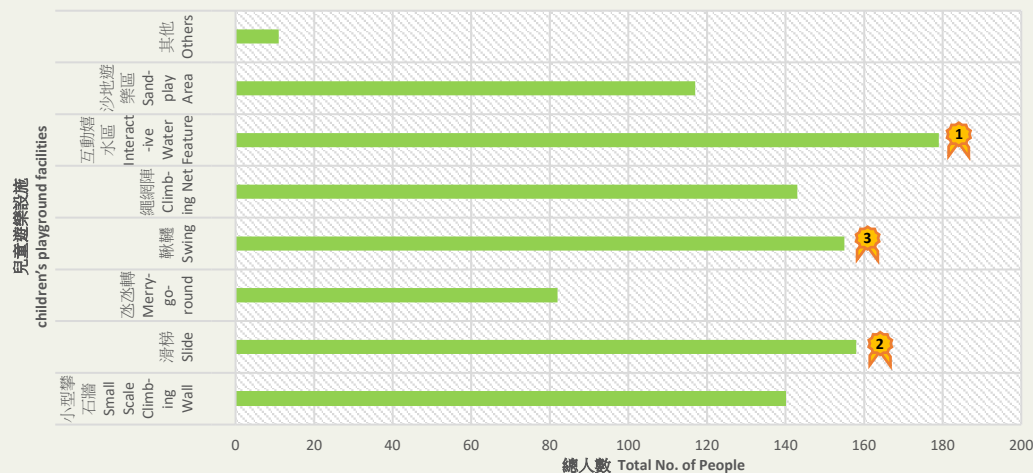
開放予市民使用  
Open to Public

# Survey Results regarding the Facilities on the Landscaped Deck above the Kwun Tong Sewage Pumping Station

## 觀塘污水泵房上置的園景平台設施的意見調查結果

請選出最多三種你希望園景平台上能設有的兒童遊樂設施，並請排列優次。

Please prioritize at most three children's playground facilities that you wish to be included in the landscaped deck.

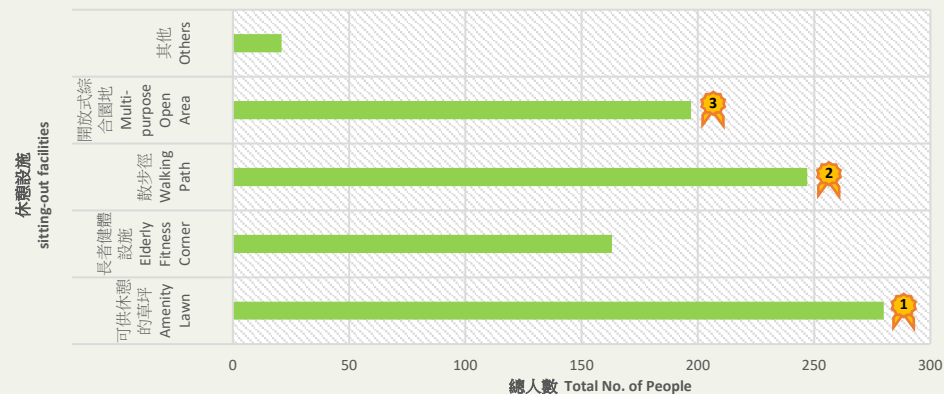


調查發現，就七項不同的兒童遊樂設施而言，受訪者認為「互動嬉水區」設施最為吸引。其次為「滑梯」及「鞦韆」，均有超過 150 名受訪者揀選為最喜愛的三款設施之一。另外，「繩網陣」、「小型攀石牆」亦受約四成受訪者的喜愛。According to the survey, among the 7 different children's playground facilities, the 'Interactive Water Feature' is the most attractive one, followed by 'Slide' and 'Swing', with more than a hundred and fifty respondents voted as their top three priorities. Besides, 'Climbing Net' and 'Small Scale Climbing Wall' are also welcomed by around 40% of the respondents.

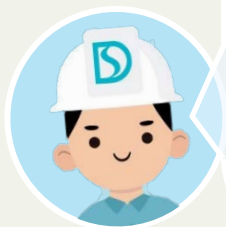


請選出最多三種你希望園內能夠提供的休憩設施，並請排列優次。

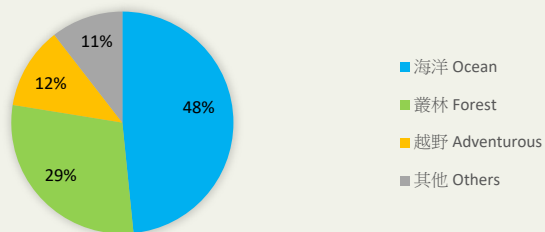
Please prioritize at most three sitting-out facilities that you wish to be included in the landscaped deck.



此外，有關「希望園景平台能夠提供的休憩設施」的問題，受訪者認為「可供休憩的草坪」最為吸引。他們表示現時香港市區缺少綠化，故希望是項工程能與觀塘基本污水處理廠互相配合，將園景平台打造成為觀塘區的「工業綠洲」。其次受歡迎的休憩設施為「散步徑」及「開放式綜合園地」。受訪者認為開放式的綜合園地用途廣泛，能同時切合不同用家的需要。Regarding "sitting-out facilities that you wish to be included in the landscaped deck", respondents considered 'Amenity Lawn' is the most attractive sitting-out facility for relaxing. They reflected that there is a lack of greeneries in the city center of Hong Kong and therefore it is hoped that this project could collaborate with the surrounding projects and turn the landscaped deck to an "industrial oasis" in Kwun Tong. The second and the third most popular sitting-out facility is the 'Walking Path' and 'Multi-purpose Open Area' respectively. Respondents commented that Multi-Purpose Open Area can suit the need of all users, hence citizens in all age groups can enjoy the facility.



如若你可以為一個公園設定主題，你希望會是？  
If you are allowed to set a theme for the park, what will it be?



當被問到為公園設定一個主題時，近五成受訪者表示，希望能以「海洋」為主題。因園景平台位置鄰近海濱，故希望署方能以此為主題，配合未來觀塘海濱一帶的發展。When it comes to the question of setting a theme for the park, almost half of the respondents hoped to adopt the theme of 'Ocean'. Respondents wished that DSD could use 'Ocean' as the theme such that the landscaped deck adjacent to the harbourfront can blend in with the future development of the Kwun Tong Harbourfront.



\*\*是次《觀塘污水泵房優化工程的意見調查》的訪問對象為鄰近地區的市民。調查於 2019 年 8 月進行，透過現場及網上的調查，成功訪問了約 400 名市民，年齡 3 歲至 70 歲不等。\*

\*\* The target audiences of the 'Opinion Survey on the Enhancement Works for Kwun Tong Sewage Pumping Station' are the citizens nearby. The survey was conducted in August, 2019. Through face-to-face communication and online questionnaires, we successfully interviewed around 400 citizens, who aged from 3 to 70 years old.

## 聆聽持份者意見 Engaging our Neighbours



- 於 2019 年 9 月初，工程顧問及承建商代表向鄧咏駿議員及其團隊簡介觀塘污水泵房優化工程的進度及收集他們的意見。  
The engineering consultants and the contractor updated the project progress with Kwun Tong District Council member Mr. Tang Wing-chun and his team to obtain their views on the project in early September 2019.



- 於 2019 年 8 月，渠務署及工程顧問代表，分別於觀塘及藍田為園景平台上的休憩及遊樂設施設計進行意見收集。

The representatives from the Drainage Services Department and the engineering consultants conducted face-to-face survey at Kwun Tong and Lam Tin in August 2019 to collect views regarding the facilities on the landscaped deck.



### 聯絡我們 *Contact Us*

合約編號 <b>Contract No.</b>	DC/2017/05
承建商 <b>Contractor</b>	 <b>中國地質工程集團有限公司</b> CHINA GEO-ENGINEERING CORPORATION <b>中國地質工程集團有限公司</b> <b>China Geo-Engineering Corporation</b>
工程諮詢熱線 <b>Project Hotline</b>	6466 2466
電郵 <b>Email</b>	pro@dc201705.com.hk
工程顧問 <b>Consultants</b>	 <b>阿特金斯顧問有限公司</b> <b>Atkins China Limited</b> <small>Member of the SNC-Lavalin Group</small>