



觀塘污水泵房優化工程

Enhancement Works for Kwun Tong Sewage Pumping Station

為配合未來東九龍發展，渠務署現正為觀塘污水泵房進行優化工程。泵房位置鄰近觀塘繞道及偉業街，工程已於 2017 年年底展開，預計於 2022 年年底完成。此通訊會提供最新的工程進度及相關的資訊。

To cater for future development of East Kowloon, the Drainage Services Department (DSD) will enhance the Kwun Tong Sewage Pumping Station (KTSPS), which is situated near Kwun Tong Bypass and Wai Yip Street. The enhancement works have commenced in late 2017 and are scheduled for completion in end 2022. This newsletter provides the latest information on the progress of construction and related information of the project.

工程施工程序

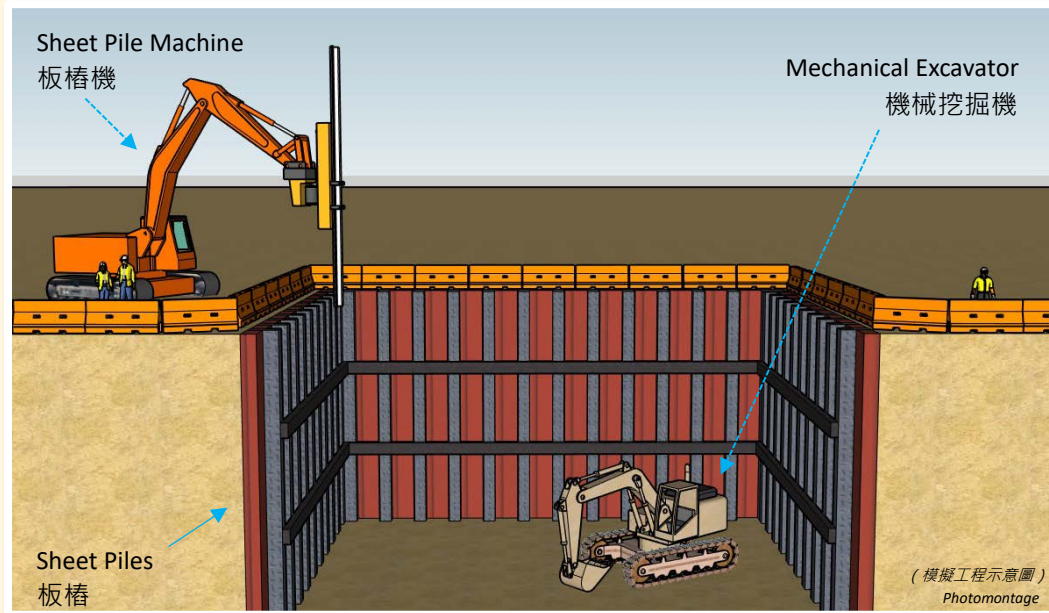
Construction Sequence of the Project

- | | |
|--|--------------------|
| ➤ 圍封工地
Enclosure of Site Area | ✓ |
| ➤ 土地勘測
Ground Investigation | ✓ |
| ➤ 地下設施改道
Diversion of Underground Utilities | ✓ |
| ➤ 建造樁柱和地基
Construction of Piles and Foundation | 進行中
In progress |
| ➤ 進行開挖並建造臨時支撐
Construction of ELS and Excavation for Balancing Tank | 進行中
In progress |
| ➤ 建造污水調節池及附屬設施
Construction of Balancing Tank and its Associated Facilities | □ |
| ➤ 建造園景平台
Construction of Landscaped Deck | □ |
| ➤ 安裝通風系統及辟味設施
Installation of Ventilation System and Deodorization Facilities | □ |
| ➤ 建造連接道路及其他配套設施
Construction of the Connecting Roads and the Ancillary Works | □ |
| ➤ 測試相關機電設備
Testing of Associated E&M Equipment | □ |
| ➤ 美化園景平台及裝設遊樂設備
Beautification of Landscaped Deck and Installation of Playground Facilities | □ |
| ➤ 完成測試
Testing & Commissioning | □ |

開放予市民使用 Open to Public

What is Excavation and Lateral Support (ELS) System?

什麼是挖掘與側向支撐系統？



▲ 上圖顯示挖掘與側向支撐系統的部分工序
The photo above shows part of the ELS works.

● 側向支撐系統的主要作用為支撐挖掘區周邊的泥土，令樁帽及地庫等地下設施可於挖坑內建造。建造側向支撐系統的工序主要包括:-

The lateral support system could provide support to the soil adjacent to the excavated area, so that the underground facilities such as pile caps and basement can be constructed within the excavated area. The construction of lateral support system mainly includes:-

- ▶ 建造起重柱及板樁 Construction of king post & installation of sheet piles
- ▶ 安裝橫擋 Installation of waling
- ▶ 灌漿以防止地下水湧入 Grouting to prevent groundwater ingress if necessary

我們現時正在設立的側向支撐系統，將會用作建造深度為 12 米的地下污水調節池。整個側向支撐系統約須 9 個月至 1 年時間才可完成。

The ELS system we are setting up will be used for constructing the underground balancing tank with 12 meters depth. The whole ELS system requires about 9 months to a year for completion.



我們現正在進行擬建污水調節池的挖掘與側向支撐系統工程。上圖為焊接板樁前的準備工序。

The construction of the lateral support system for balancing tank are in progress. The photo above shows the preparation works for the welding of sheet piles.



上圖為板樁安裝及檢測工序。

The photos above show the driving, welding and testing of sheet piles.





渠務署

Drainage Services Department



聆聽持份者意見 Engaging our Neighbours



- 於 2019 年 3 月初，渠務署及工程顧問代表分別向保護市區公園大聯盟代表及麗港城（第一、二及四期）業主委員會主席及副主席簡介觀塘污水泵房優化工程的內容及收集他們的意見。

The project team of DSD and the engineering consultants introduced the project to committee members of Save Our Urban Parks Alliance and the Chairman and Vice Chairman of Laguna City (Phase 1, 2 & 4) in early March 2019 and obtained their views towards the project.



聯絡我們 *Contact Us*

合約編號 Contract No.	DC/2017/05
承建商 Contractor	 中國地質工程集團有限公司 CHINA GEO-ENGINEERING CORPORATION 中國地質工程集團有限公司 China Geo-Engineering Corporation
工程諮詢熱線 Project Hotline	6466 2466
電郵 Email	pro@dc201705.com.hk
工程顧問 Consultants	 ATKINS 阿特金斯顧問有限公司 SNC • LAVALIN Member of the SNC-Lavalin Group Atkins China Limited