

## Environmental Management and Control



The spoil generated from the Tunnel Mining is "internally reused" for the backfilling of the spiral ramp located at Intake I-1. Thus can reduce the disposal of spoil to the Public Fill Facility and extend the life of Public Fill Facility. In another word, this method can save the importing material from outside.

## News



Won the Merit Award in Construction Industry Safety Award Scheme 2010/2011

Maeda-CREC-SELI Joint Venture have won the "Merit" Award in the Construction Industry Safety Award Scheme 2010/2011 organised by the Labour Department in the categories of "Safety Team" and "Civil Engineering Construction Site". One of our staff has also won the award of "Safety Worker".

This year marks the 12th anniversary of the Construction Industry Safety Award Scheme, which aims to raise the occupational safety and health awareness of contractors, site personnel and workers of the construction industry, as well as to honour, through an open competition, participants with good occupational safety and health performances.

The result announcement and award ceremony was held on 13 March 2011. The award scheme's site safety competition recorded an entry of 150 sites, 52 sub-contractors and 100 safety teams this year.



## Communication Channels

24-hour Hotline	8100 8680	Resident Site Supervisory Team	
Email	enquiry@dsg.gov.hk	Office Hours Telephone	2498 5500
Website	http://www.dsd.gov.hk	Fax No.	2498 7282

## Tsuen Wan Drainage Tunnel Contract No. DC/2007/12 NEWSLETTER (2011-3 Issue 13)

We are pleased to present the 13<sup>th</sup> edition of the Contract Newsletter providing information on the scope and progress of the works.

### Project Overview

The Drainage Services Department is implementing the Tsuen Wan Drainage Tunnel Project. It aims at relieving the risk of flooding in Tsuen Wan and Kwai Chung. The Project comprises a 5.1km long drainage tunnel with an internal diameter of 6.5 metres, three intakes at Wo Yi Hop, Lo Wai and Tso Kung Tam and an outfall at Yau Kom Tau. The collected runoff will be discharged to the Rambler Channel through the Drainage Tunnel.

The Project was commenced on 28 Dec 2007 for anticipated completion in 2012. The construction cost is around \$1,123 million.

### Project Progress

Ongoing activities in the following work fronts include slope stabilisation and greening, tunnel excavation, installation of soil nails, construction of skin wall, formation of internal access road and work platform, tree transplantation and geotechnical instrumentations.

Work fronts in Tsuen Wan and Kwai Chung:

- Intake at Wo Yi Hop
- Intake at Tso Kung Tam
- Intake at Lo Wai
- Outfall at Yau Kom Tau





## Tunnel Works

The tunnel is about 5.1km long with an internal diameter of 6.5m. Tunnel Boring Machine will be used to construct the tunnel through rock at a depth of some 10m to 200m below ground. The objective of the tunnel is to raise the flood protection standard in the Tsuen Wan and Kwai Chung districts, to withstand rainstorms with a return period of 1 in 50 years. Regarding the construction progress, the tunnel boring has been completed approximate 38% (reached to CH. 3167.991) so far.



Loading platform and locomotive



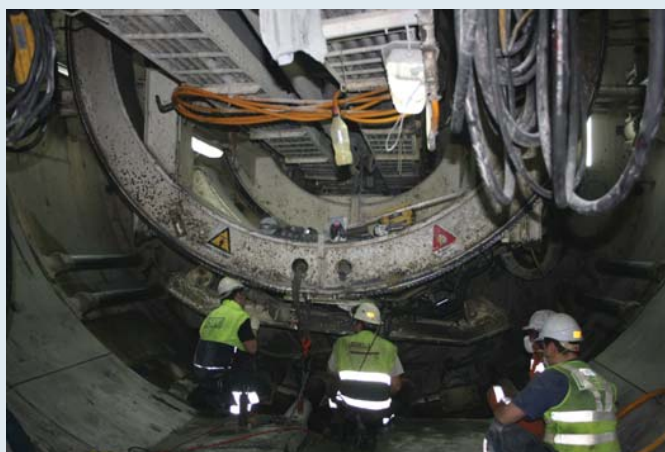
Conveyor belt cassette and air duct



Conveyor belt cassette at tunnel entrance



Booster inside tunnel



Tunnel Boring Machine



Tunnel boring and mucking out

## Major Works in Next Quarter



### Outfall at Yau Kom Tau

We shall commence/continue:  
Excavation of spiral ramp and box culvert, implementation of temporary traffic arrangement of Castel Peak Road, tunnel boring, mucking out and marine works.



### Intake at Tso Kung Tam

We shall commence/continue:  
Excavation of shaft and slop stabilization.



### Intake at Lo Wai

We shall commence/continue:  
Construction of vortex shaft and man access shafts, completion of H pile works and construction of skin wall, and completion of pipe jacking works.



### Intake at Wo Yi Hop

We shall commence/continue:  
Construction of Cascade, H-pile works along Shing Mun Road and skin wall and preparation works for Tunnel Boring Machine retrieval works.