

Environmental Management and Control



Environmental protection is our priority concern. We completed the air, noise and water environmental baseline monitoring for the subsequent implementation of effective environmental mitigation measures including erection of noise barriers, installation of wheel washing facilities and use of quiet machinery. In order to ensure the measures are properly implemented, our environmental team and independent environmental checker would carry out monthly surprise checks and advise immediate rectifications, if necessary. We would ensure the site tidiness and prevent mosquito bleeding.

News



Blasting Consultation in Lo Wai

We are now conducting consultation with local residents in Lo Wai regarding the proposed blasting works in Intake I-2 of the site. The additional pre-construction condition survey in Lo Wai area is now in progress. Please feel free to contact our hotline for information.



Drainage Improvement Works in Lo Wai

We shall commence/continue: construction of retaining wall, geotechnical instrumentation, erection of working platform and trenchless excavation at Sheung Kok Shan Road.

Communication Channels

24-hour Hotline	8100 8680	Resident Site Supervisory Team
Email	enquiry@dsg.gov.hk	Office Hours Telephone 2498 5500
Website	http://www.dsd.gov.hk	Fax No. 2498 7282



Tsuen Wan Drainage Tunnel Contract No. DC/2007/12 NEWSLETTER (2010-12 Issue 12)

We are pleased to present the 12th edition of the Contract Newsletter providing information on the scope and progress of the works.

Project Overview

The Drainage Services Department is implementing the Tsuen Wan Drainage Tunnel Project. It aims at relieving the risk of flooding in Tsuen Wan and Kwai Chung. The Project comprises a 5.1km long drainage tunnel with an internal diameter of 6.5 metres, three intakes at Wo Yi Hop, Lo Wai and Tso Kung Tam and an outfall at Yau Kom Tau. The collected runoff will be discharged to the Rambler Channel through the Drainage Tunnel.

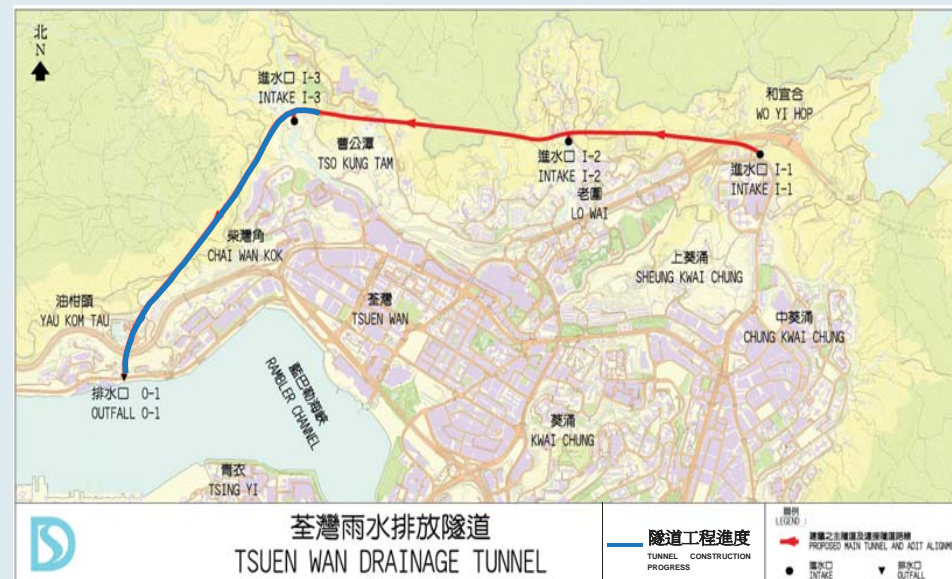
The Project was commenced on 28 Dec 2007 for anticipated completion in 2012. The construction cost is around \$1,123 million.

Project Progress

Ongoing activities in the following work fronts include slope stabilisation and greening, tunnel excavation, installation of soil nails, construction of skin wall, formation of internal access road and work platform, tree transplantation and geotechnical instrumentations.

Work fronts in Tsuen Wan and Kwai Chung:

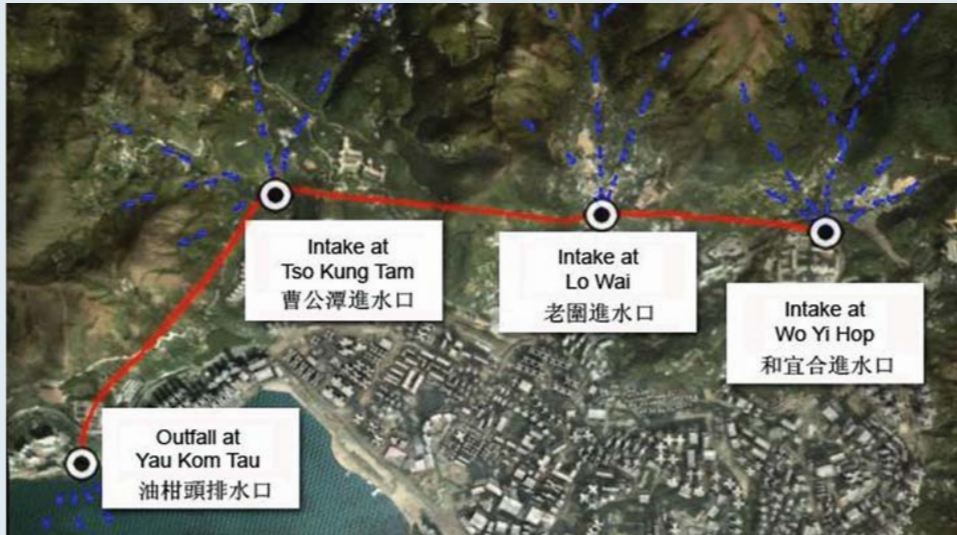
- Intake at Wo Yi Hop
- Intake at Lo Wai
- Intake at Tso Kung Tam
- Outfall at Yau Kom Tau



Marine Works

Upon commissioning of the Tsuen Wan Drainage Tunnel, the stormwater from the upland catchment will be intercepted and discharged through the tunnel into the Rambler Channel via the Outfall at Yau Kom Tau. We are now constructing a “stilling basin” at the Outfall to slow down the stormwater flowing into the Channel, as well as to reduce the formation of undercurrent.

We understand that shortening the duration of work at this location can reduce the impact on nearby residents. Therefore, the “stilling basin” will be formed by 285 prefabricated concrete blocks of 20 tons each. These prefabricated components will be installed at appropriate locations by barges. The placement process is anticipated for completion by December 2011. Compared with the traditional construction method, the use of prefabrication can speed up the progress of project and thus shorten the overall construction period.



Excess stormwater will be discharged into the Rambler Channel via the Outfall at Yau Kom Tau



Model of Outfall at Yau Kom Tau



Bird eye's view taken from Tsing Yi



Construction of box culverts underneath Castle Peak Road



Modification of existing rock armour seawall

Major Works in Next Quarter



Outfall at Yau Kom Tau

We shall commence/continue:
Excavation of spiral ramp and box culvert, temporary traffic arrangement of Castel Peak Road, tunnel boring and mucking out and marine works.



Intake at Tso Kung Tam

We shall commence/continue:
Excavation works, construction of skin wall and cascade and geotechnical instrumentation.



Intake at Lo Wai

We shall commence/continue:
Geotechnical instrumentation, construction of vortex shaft, man access shaft, approach channel and L-shaped retaining wall.



Intake at Wo Yi Hop

We shall commence/continue:
Modification of Shing Mun Nullah and Wo Yi Hop Nullah, construction of spiral access ramp and cascade.