

Tsuen Wan Drainage Tunnel 荃灣雨水排放隧道

Contract No. 工程合約編號

DC/2007/12

Environmental Management and Control 環境管理及控制

Environmental protection is our priority concern. We completed the air, noise and water environmental baseline monitoring for the subsequent implementation of effective environmental mitigation measures including erection of noise barriers, installation of wheel washing facilities and use of quiet machinery. In order to ensure the measures are properly implemented, our environmental team and independent environmental checker would carry out monthly surprise checks and advise immediate rectifications, if necessary. We would ensure the site tidiness and prevent mosquito breeding.

我們明白公眾對環境的關注，因此我們已於施工前完成了噪音、空氣和水質的環境基線報告，以作日後設計和實施緩解措施之用。工程進行期間，我們會在適當的位置設置隔音屏障、洗車池及使用靜音機械等，以減少工程對附近環境的影響。我們的環境小組會每星期巡查地盤，而獨立環境查核人亦會每月突擊巡查各工地，以確保承建商執行各種環境保護措施。同時，我們會保持工地整潔，減少積水，及每週使用防蚊煙，以防蚊患。



Automatic water spraying system
自動灑水裝置

Major works in next quarter 未來一季開展的工程



Outfall at Yau Kom Tau 油柑頭排水口

We shall commence/continue:

Formation of temporary access road, installation of soil nails and rock dowel, erection of tower crane and TBM launching platform together with its associated mechanical installations.

主要工程包括:

建設臨時通道、斜坡鞏固工程、組裝吊機、架設隧道鑽挖機的工作平台及安裝其相關工程機械。

Intake at Tso Kung Tam 曹公潭進水口

We shall commence/continue:

Formation of permanent and temporary access road, installation of soil nails, erosion control mat and wire mesh, excavation works, demolition, removal of boulders and tree transplantation.

主要工程包括:

建設永久及臨時通道、進行斜坡鞏固工程、進行挖掘、清理巨石及移植樹木。



Intake at Lo Wai 老圍進水口

We shall commence/continue:

Geotechnical instrumentation, erection of working platform and noise enclosure, construction of shafts, man access and vortex drop.

主要工程包括:

裝置土力監測儀器、架設工作平台和隔音設施、建造通風豎井、維修人員通道和旋渦式引水道。



Intake at Wo Yi Hop 和宜合進水口

We shall commence/continue:

Excavation, installation of soil nails, modification of Shing Mun Nullah and construction of spiral access ramp.

主要工程包括:

進行挖掘及斜坡鞏固工程、改善城門道及和宜合道明渠及建造螺旋式維修通道。



Other information 其他資訊

News 最新資訊

Air Sampling Works of WSD Tunnel No. 3

水務署三號供水隧道空氣樣本測試工程

The captioned air sampling works at Chai Wan Kok was duly finished. Special thanks to the residents and the Management Office of Summit Terrace for their kind support.

上述位於柴灣角的空氣樣本測試工程業已完成。特別鳴謝翠豐臺各住戶及屋苑管業處對本工程的支持和體諒。

Lo Wai Drainage Improvement Works 老圍渠務改善工程



The drainage improvement works at Sheung Kok Shan of Lo Wai had been commenced on November 2009. We will continue with the installation of geotechnical instruments, erection of hoarding and safety fencing, and excavation works.

上述工程已於本年十一月正式開展。我們現正繼續進行裝置土力監測儀器、築建圍板圍欄及進行挖掘工程。

Communication Channels

- 24-hour Hotline 8100 8680
- Resident Site Supervisory Team Office Hours Telephone 2498 5500
- Fax Line 2498 7282
- Email enquiry@dsd.gov.hk
- Website http://www.dsd.gov.hk

溝通渠道

- 24小時熱線電話 8100 8680
- 駐工地監察隊辦公時間電話 2498 5500
- 傳真號碼 2498 7282
- 電郵 enquiry@dsd.gov.hk
- 網址 http://www.dsd.gov.hk

Thanks again for the continued patience, forbearance and interest of all residents, shopkeepers, road users and the public.

我們在此多謝各居民、商戶及公眾對本工程的關注及忍耐。

We are pleased to present the 8th edition of the Contract Newsletter providing information on the scope and progress of the work.

The Contract

The Drainage Services Department is implementing the Tsuen Wan Drainage Tunnel Project. It aims at relieving the risk of flooding in Tsuen Wan and Kwai Chung. The Project comprises of a drainage tunnel of 5.1km long with internal diameter of 6.5 metres, three intakes at Wo Yi Hop, Lo Wai and Tso Kung Tam and an outfall at Yau Kom Tau. The collected runoff would eventually discharge to the Rambler Channel through the Drainage Tunnel.

The Project was commenced on 28 Dec 2007 for anticipated completion in end 2011. The construction cost is around \$1,123 million.

Progress of Construction

Ongoing activities in the following work fronts include slope stabilisation and greening, excavation, installation of soil nails, construction of skin wall, formation of internal access road and work platform, tree transplantation and geotechnical instrumentations.

Tsuen Wan and Kwai Chung Areas:

- Intake at Wo Yi Hop
- Intake at Lo Wai
- Intake at Tso Kung Tam
- Outfall at Yau Kom Tau

這是荃灣雨水排放隧道工程的第八期季度通訊，本通訊旨在向你介紹荃灣雨水排放隧道工程的概覽及進度。

工程計劃

渠務署在荃灣及葵涌進行荃灣雨水排放隧道工程，其目的是緩解荃灣及葵涌市區在暴雨期間的水浸威脅。工程包括一條全長約5.1公里，內直徑為6.5米的雨水排放隧道；三個分別位於和宜合、老圍及曹公潭的進水口及一個位於油柑頭的排水口。三個收水口所收集的雨水會經雨水排放隧道引流至油柑頭排水口排出藍巴勒海峽。

這項工程已於2007年12月28日正式展開，並預計於2011年年底完成。建築費用約為11億2千3百萬。

施工進度

以下四個工地現正進行包括斜坡鞏固及綠化工程、挖掘、泥釘工程、建造擋土牆及於工地內建設臨時行車通道、架設工作台、移植樹木及安裝土力監測儀器工程。

荃灣和葵涌區:

- 和宜合進水口
- 老圍進水口
- 曹公潭進水口
- 油柑頭排水口



荃灣雨水排放隧道設計及建造工程

Design and Construction of Tsuen Wan Drainage Tunnel

Major Construction Activities of Outfall at Yau Kom Tau

油柑頭排水口主要工程

Tunnel Boring Machine (TBM) is scheduled to be delivered to the Outfall site at Yau Kom Tau in March 2010. To facilitate the assembly of the TBM, Outfall site is now focused on the works at tunnel portal area. Major activities are the formation of temporary access road, installation of soil nails and rock dowel, erection of tower crane, construction of launching chamber and TBM launching platform together with its associated mechanical installations.

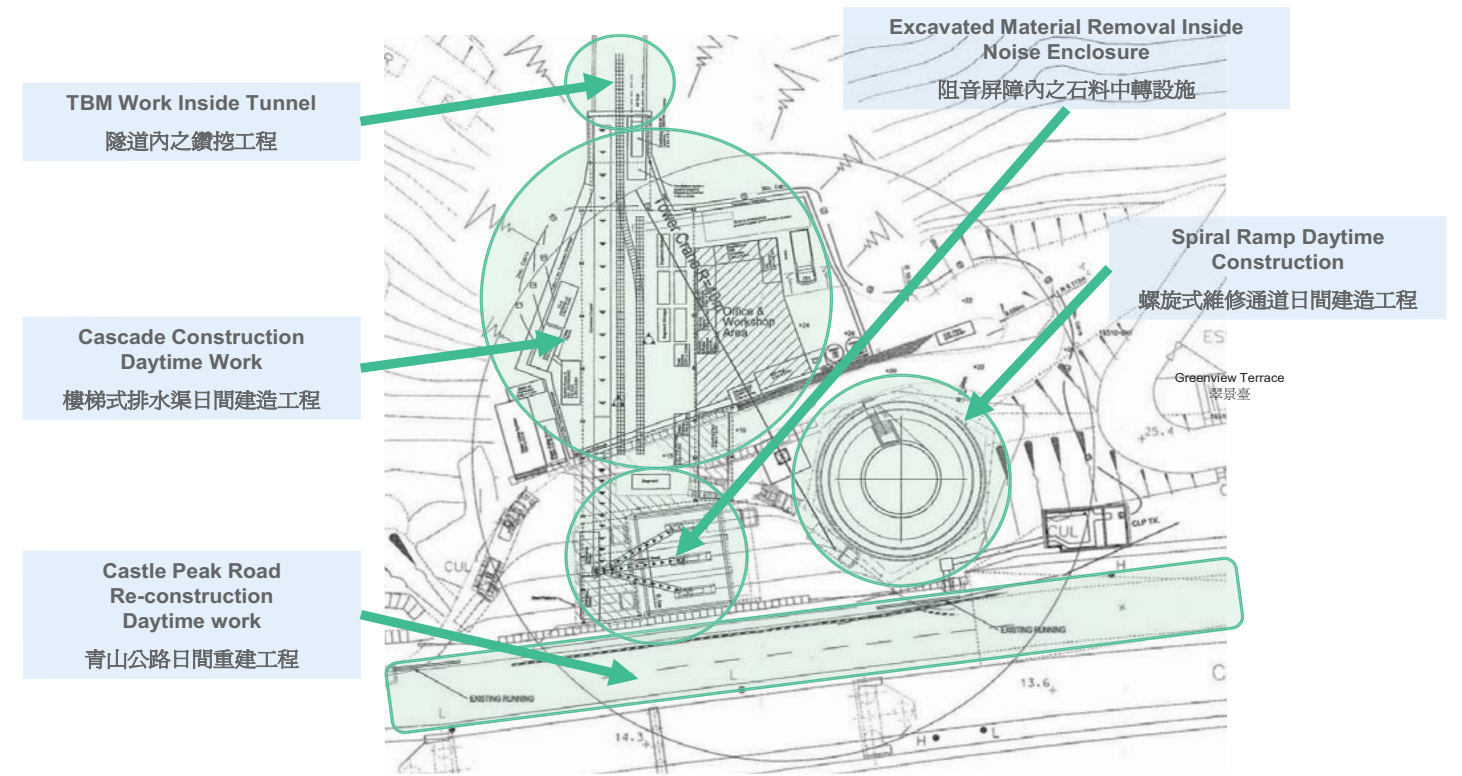
The tunnel will be constructed by a double-shield TBM. This will allow installation of a precast concrete lining in parallel with the excavation to accelerate progress. We would ensure the implementation of effective environmental mitigation measures including erection of noise barriers, installation of wheel washing facilities and use of quiet machinery on site.

Please feel free to contact our hotline for more information.

隧道鑽挖機將於二零一零年三月運抵油柑頭排水口工地進行組裝，我們因此正全速進行隧道出口的建造及其相關工程，當中包括：建造臨時通道、鞏固斜坡、組裝吊機、架設隧道鑽挖機的工作平台及安裝其他工程機械。

經過詳細研究，我們決定使用一部雙盾式隧道鑽挖機，來進行荃灣雨水排於隧道的鑽挖工程，這部隧道鑽挖機的優點，是可以把預制的混凝土組件，立即安放在剛鑽挖出來的隧道表面，從而加快隧道工程的進度。除此以外，我們會在工地的適當位置豎立隔音屏障、設置洗車池及使用靜音機械等，以減少工程對附近環境的影響。

如對上述工程有任何查詢，歡迎致電工程熱線。



Description of the coming major construction activities in Outfall site at Yau Kom Tau
油柑頭排水口工地未來主要工程概覽



Aerial view of the tunnel portal area
工地鳥瞰圖



Construction of launching chamber
隧道工程



Construction of noise enclosure framework
搭建中的圍封式隔音屏障支架

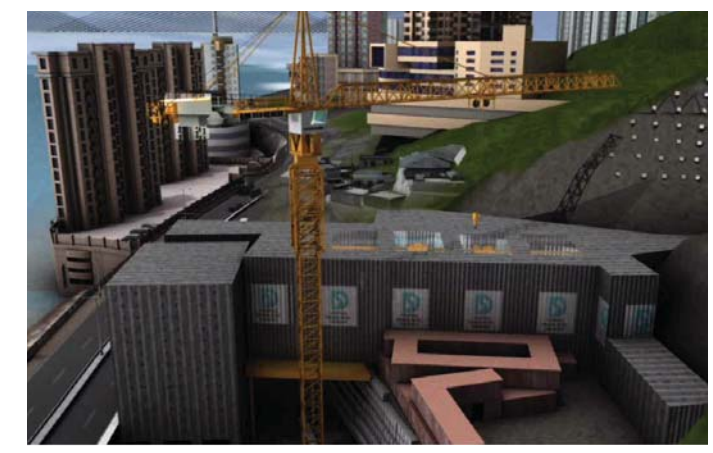


Illustration of the construction works of tunnel portal
隧道出口工程示意圖

