

Leighton - LNS Joint Venture

Contract No. DC/2007/24
Harbour Area Treatment
Scheme Stage 2A -
Construction of Sewage
Conveyance System from
Aberdeen to Sai Ying Pun:
*Baseline Landscape & Visual
Monitoring Report*

March 2010

Environmental Resources Management

21/F Lincoln House
979 King's Road
Taikoo Place
Island East, Hong Kong
Telephone: (852) 2271 3000
Facsimile: (852) 2723 5660
E-mail: post.hk@erm.com
<http://www.erm.com>

Leighton - LNS Joint Venture

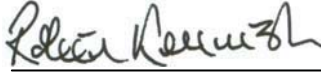
Contract No. DC/2007/24
Harbour Area Treatment
Scheme Stage 2A -
Construction of Sewage
Conveyance System from
Aberdeen to Sai Ying Pun:
*Baseline Landscape & Visual
Monitoring Report*

March 2010

Reference 0109356

For and on behalf of ERM-Hong Kong, Limited

Approved by: Dr Robin Kennish

Signed: 

Position: Director

Certified by: 
Registered Landscape Architect,
(Scott Lang)

Date: 23 March 2010

CONTENTS

1	BASELINE LANDSCAPE AND VISUAL MONITORING	1
1.1	MONITORING PARAMETERS	1
1.2	MONITORING PROCEDURES AND LOCATIONS	3
1.3	RESULTS AND OBSERVATIONS	3
1.4	EVENT AND ACTION PLAN	6
2	CONCLUSION	9

1.1 MONITORING PARAMETERS

Site visits were undertaken on the 2nd of December 2009 to review the baseline landscape and visual conditions of work sites in Aberdeen, Wah Fu, Cyberport, Sandy Bay and Sai Ying Pun and its vicinity with regard to parameters assessed in the *Section 13* of the approved EIA Report of *Harbour Area Treatment Scheme (HATS) Stage 2A* (hereafter called HATS2A). This includes landscape resources (LRs), landscape character areas (LCAs) and viewing condition of Visually Sensitive Receivers (VSRs) as summarized below:

Landscape Resource (LR)

- LR3 – Trees on Central PTW (Sai Ying Pun site ONLY)
- LR4 – Trees on PTW and temporary works area at Sandy Bay
- LR5 – Trees on PTW and temporary works area at Cyberport
- LR6 – Trees on PTW at Wah Fu
- LR7 – Trees on PTW and temporary works areas at Aberdeen

Landscape Character Area (LCA)

- LCA1 – Miscellaneous Urban Fringe Landscape
- LCA2 – Residential Urban Landscape
- LCA3 – City Grid Mixed Urban Development
- LCA4 – Residential Urban Fringe Landscape
- LCA5 – Upland and Hillside Landscape
- LCA8 – Organic Mixed Urban Development
- LCA9 – Coastal Upland and Hillside Landscape
- LCA10 – Settled Valley Landscape
- LCA11 – Transportation Corridor Landscape
- LCA12 – Industrial Urban Landscape
- LCA13 – Mixed Modern Comprehensive Urban Development Landscape

Visually Sensitive Receivers (VSRs)

Table 1.1 lists the key VSRs found within the Zone of Visual Influence (ZVI).

Table 1.1 Key Visually Sensitive Receivers (VSRs)

Id. No.	Key Visually Sensitive Receivers (VSRs)	Type of VSRs ^(a)
<i>Sai Ying Pun Area</i>		
CR3.7	129-152 Connaught Road	Commercial/ Residential
CR3.8	Connaught Garden	Commercial/ Residential
CR3.9	158A-162 Connaught Road West	Commercial/ Residential
CR3.10	165-167 Connaught Road West	Commercial/ Residential
GIC3.4	Western Park Indoor Game Hall	Recreational
OU3.3	Western Wholesale Market	Commercial
T3.1	Connaught Road	Transportation
T3.2	Victoria Harbour	Transportation
<i>Sandy Bay Area</i>		
CR4.1	Residential Block on Sha Wan Drive	Residential
GIC4.1	Canossian Retreat House	Government / Institution / Community
GIC4.2	Duchess of Kent Children Hospital	Government / Institution / Community
GIC4.3	1-15 Sandy Bay Road	Government / Institution / Community
GIC4.4	Kennedy School	Government / Institution / Community
GIC4.5	HKU Stanley Ho Sport Centre	Recreational
OU4.1	Chinese Christian Cemetery	Government / Institution / Community
O4.1	Sandy Bay	Recreational
T4.1	Sandy Bay Drive	Transportation
T4.2	Sea Travellers of Sandy Bay	Transportation
<i>Cyberport Area</i>		
R5.1	Lower Baguio Villa	Residential
R5.2	Upper Baguio Villa	Residential
OU5.1	Cyber Centre	Commercial/ Residential
OU5.2	Bel-air	Commercial/ Residential
T5.1	Cyberport Road	Transportation
T5.2	Sea Travellers of Telegraph Bay	Transportation
<i>Wah Fu Area</i>		
R6.1	Wah Fu Estate	Residential
O6.1	Waterfall Bay Park	Recreational
T6.1	Waterfall Bay Road	Transportation
T6.2	Sea Travellers of Pok Po Wan	Transportation
<i>Aberdeen Area</i>		
R7.1	Wah Kwai Estate	Residential
R7.2	Residential Zone on Ap Lei Chau Estate	Residential
I7.1	Gas Station	Occupational
I7.2	Industries Zone on Tin Wan Praya Road waterfront	Occupational
OU7.1	Concrete Batching Plant, Planned Coach Parking Area	Occupational

Id. No.	Key Visually Sensitive Receivers (VSRs)	Type of VSRs ^(a)
T7.1	Tin Wan Praya Road	Transportation
T7.2	Aberdeen West Typhoon Shelter	Transportation

Note:
(a) R = Residential; C = Commercial, CR = Commercial/Residential, GIC = Government/Institution/Community, O = Open space, OU = Others use; T = Transport related.

1.2 *MONITORING PROCEDURES AND LOCATIONS*

In accordance with the EM&A Manual, the baseline review should be conducted by a Registered Landscape Architect (RLA) to record changes of each LR, LCA and the viewing conditions of VSR. The monitoring procedures and criteria as described in the EM&A Manual were adopted for the baseline landscape and visual assessment.

The present baseline condition of LRs, LCAs, and VSRs within the zone of visual influence, were checked against *Section 13* of the approved EIA Report of HATS2A through on site verification and Tree Survey Report provided by Leighton-LNS for this Project.

1.3 *RESULTS AND OBSERVATIONS*

1.3.1 *Landscape Resources (LRs)*

Based on the site visit findings and a review of the *Tree Survey Report*, the number and status of trees in each LR is updated. The health, form and amenity value of all trees were similar to that described in the approved EIA Report and no significant change in landscape resources was found, except for LR5 and LR7.

The updated information on LRs is summarized in *Table 1.2* and the change status of the LR5 and LR7 is presented in *Table 1.3*.

Table 1.2 *Updated Information on Landscape Resources*

LR	Name of LR	No. of Trees identified in EIA Report	No. of Trees estimated to be affected in the EIA Report	Updated No. of Trees Identified within Project Worksites during Baseline Monitoring ^{(a) (b) (c)}
LR3	Trees on Central PTW (Sai Ying Pun site)	0	0	0
LR4	Trees on PTW and temporary works area at Sandy Bay	43	34	43
LR5	Trees on PTW and temporary works area at Cyberport	26	19	24

LR	Name of LR	No. of Trees identified in EIA Report	No. of Trees estimated to be affected in the EIA Report	Updated No. of Trees Identified within Project Worksites during Baseline Monitoring ^{(a) (b) (c)}
LR6	Trees on PTW at Wah Fu	4	0	4
LR7	Trees on PTW and temporary works areas at Aberdeen	69	39	67

Notes:

- (a) Site boundaries of work sites in the Project have updated from the boundaries stated in the approved EIA report based on current site conditions.
- (b) *Tree Survey Report* provided by Leighton-LNS JV is also referenced.
- (c) *Updated No. of Trees* includes all existing trees (status alive or dead) physically found on site during site visits.

Table 1.3 Landscape Resources with Changed Status

LR	Name of LR	Tree No.	Tree Species	Estimated Size			Form	Health	Amenity Value	Survival Rate after Transplanting	Previous Status in Tree Survey Report	Updated Status	
				Chinese Name	Height (m)	DBH (mm)							Spread (m)
LR5	Trees on PTW and temporary works area at Cyberport	T015	Archontophoenix alexandrae	假欖椰	4.5	150	1.8	F	F	M	H	Transplanted	Missing ^(e)
		T016	Archontophoenix alexandrae	假欖椰	5	150	1.8	F	F	M	H	Transplanted	Missing ^(e)
LR7	Trees on PTW and temporary works areas at Aberdeen	T002	Acacia confusa	台灣相思	5.1	200	5.5	P	P	L	L	Retained	Missing ^(c)
		T008	Macaranga tanarius	血桐	4	200	3	P	P	L	L	Transplanted	Dead ^(b)
		T082	Macaranga tanarius	血桐	5.5	230	5	P	P	L	L	Retained	Missing ^(e)

Notes:

- (a) Reported missing on 9 October 2009. Refer to a letter dated on 14 October 2009 (Ref.: LLNSJV/2009/DC20074/000352) and a letter dated on 22 January 2010 (Ref: (DC/2007/24)/M45/150(0018)) attached in Annex A.
- (b) Reported cut by others on 9 October 2009. Refer to a letter dated on 14 October 2009 (Leighton Ref.: LLNSJV/2009/DC200724/000352) and a letter dated on 22 January 2010 (Ref: (DC/2007/24)/M45/150(0018)) attached in Annex A.
- (c) Reported removed after typhoon on 16 September 2009. Refer to a letter dated on 26 September 2009 (Leighton Ref.: LLNSJV/2009/DC200724/000275) and a letter dated on 22 January 2010 (Ref: (DC/2007/24)/M45/150(0018)) attached in Annex A.

1.3.2 *Landscape Character Areas (LCAs)*

Based on the site visit findings, no substantial change in the baseline condition of LCA was found. *Figures 1.1 to 1.5* shows the existing LCA locations and *Figure 1.6* shows the typical LCA onsite. A summary of the updated baseline condition of LCAs recorded in the recent review is given in *Table 1.4*.

Table 1.4 *Updated Baseline Condition of LCAs*

LCA	Condition Reported in EIA Report	Recent Review during Baseline Monitoring
LCA1	Miscellaneous Urban Fringe Landscape	Same as the EIA report
LCA2	Residential Urban Landscape	Same as the EIA report
LCA3	City Grid Mixed Urban Development	Same as the EIA report
LCA4	Residential Urban Fringe Landscape	Same as the EIA report
LCA5	Upland and Hillside Landscape	Same as the EIA report
LCA8	Organic Mixed Urban Development Landscape	Same as the EIA report
LCA9	Coastal Upland and Hillside Landscape	Same as the EIA report
LCA10	Settled Valley Landscape	Same as the EIA report
LCA11	Transportation Corridor Landscape	Same as the EIA report
LCA12	Industrial Urban Landscape	Same as the EIA report
LCA13	Mixed Modern Comprehensive Urban Development Landscape	Same as the EIA report

1.3.3 *Visually Sensitive Receivers (VSRs)*

Based on the site visit findings, no substantial change was observed except one identified VSR in Aberdeen (OU7.1 Concrete Batching Plant, Planned Coach Parking Area) should be removed from the list. A summary of the updated VSRs in Aberdeen is given in *Table 1.5*.

Updated existing location of VSRs are shown in *Figures 1.7 to 1.11*. A comparison of viewing conditions of VSRs in the approved EIA Report and recent baseline surveys at all VSRs relevant to this Project, as listed in *Table 1.1*, are shown in *Figures 1.12 to 1.18*.

Table 1.5 *Update Information of VSR*

Area	Id. No.	Visual Sensitive Receivers	Type of Visual Sensitive Receivers	Change observed
Aberdeen Area	OU7.1	Concrete Batching Plant, Planned Coach Parking Area	Occupational	No longer exist

1.4 *EVENT AND ACTION PLAN*

No significant change in baseline condition from the approved EIA Report was recorded for LRs, LCAs and views from VSRs except LR5 and LR7. Except LR5 and LR7, no revision of landscape and visual mitigation measures is required for construction phase proposed in *Table 13.7* of the approved EIA Report and *Section 11.10* and Implementation Schedule (IS) of EM&A Manual.

Two trees were identified as missing at each of LR5 and LR7 and 1 dead tree was identified at LR7. The compensation of the above-mentioned missing trees is under discussion with DLO. Should compensatory tree planting be required confirmed by DLO, same or compatible species will be adopted and the number will have equal aggregate trunk diameter to the aggregate trunk diameter lost by the above-mentioned missing/dead trees.

Nevertheless, landscape and visual monitoring audit will be conducted during the construction of the Project to ensure that the implementation and maintenance of landscape and visual mitigation measures. Site inspections will be undertaken once every month throughout the construction period.

Should non-compliance of the landscape and visual impacts occur, actions in accordance with the action plan stated in *Table 1.6* shall be carried out.

Table 1.6 *Event and Action Plan for Landscape and Visual Impact - Construction Phase*

Action Level	Environmental Team Leader (ETL)	Independent Environmental Checker (IEC)	Engineer's Representative (ER)	Contractor
Non-conformity on one occasion	Identify source Inform the IEC and the ER Discuss remedial actions with the IEC, the ER and the Contractor Monitor remedial action until rectification has been completed	Check report Check the Contractor's working method Discuss with the ER and the Contractor on possible remedial measures Advise the ER on effectiveness of proposed remedial measures	Notify the Contractor Ensure remedial measures are properly implemented	Amend working methods Rectify damage and undertake remedial measures or any necessary replacement
Repeated Non-conformity	Identify source Inform the IEC and the ER Increase monitoring (site audit) frequency Discuss remedial actions with the IEC, the ER and the Contractor Monitor remedial actions until rectification has been completed If exceedance stops, cease additional monitoring (site audit)	Check report Check the Contractor's working method Discuss with the ER and the Contractor on possible remedial measures Advise the ER on effectiveness of proposed remedial measures	Notify the Contractor Ensure remedial measures are properly implemented	Amend working methods Rectify damage and undertake remedial measures or any necessary replacement

CONCLUSION

Site visits for the baseline landscape and visual monitoring were made on the 2nd of December 2009. No significant changes between the existing and the baseline condition of LRs, LCAs and views towards VSRs as stipulated in the EIA were identified aside from:

- Change of landscape resources of LR5 and LR7; and
- One removed VSR in Aberdeen (OU7.1 Concrete Batching Plant, Planned Coach Parking Area).

Two trees were identified as missing at each of LR5 and LR7 and 1 dead tree was identified at LR7. The compensation of the above-mentioned missing trees is under discussion with DLO. Should compensatory tree planting be required confirmed by DLO, same or compatible species will be adopted and the number will have equal aggregate trunk diameter to the aggregate trunk diameter lost by the above-mentioned missing/dead trees.

Regular monitoring throughout the construction period shall be undertaken as per the Event and Action Plan.

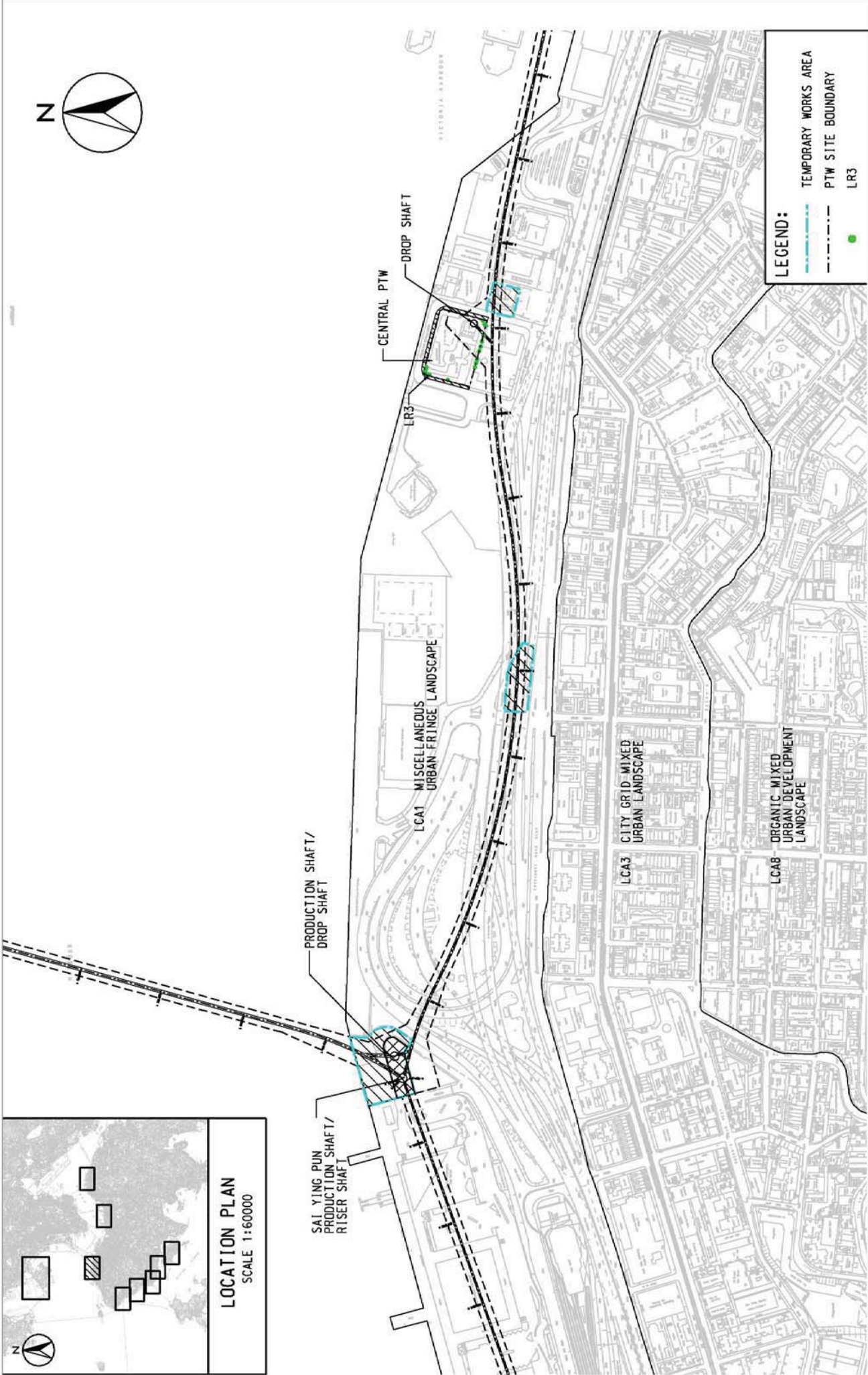
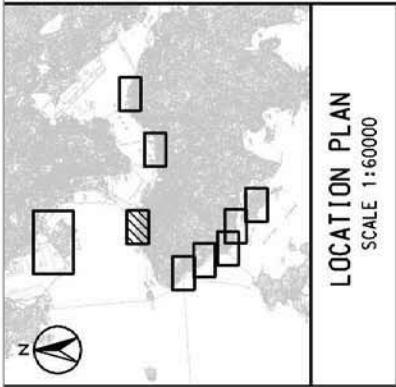


Figure 1.1

Contract No. DC/2007/24
 Harbour Area Treatment Scheme Stage 2A
 Construction of Sewage Conveyance System from Aberdeen to Sai Ying Pun
 Baseline Landscape Monitoring Locations in Sai Ying Pun

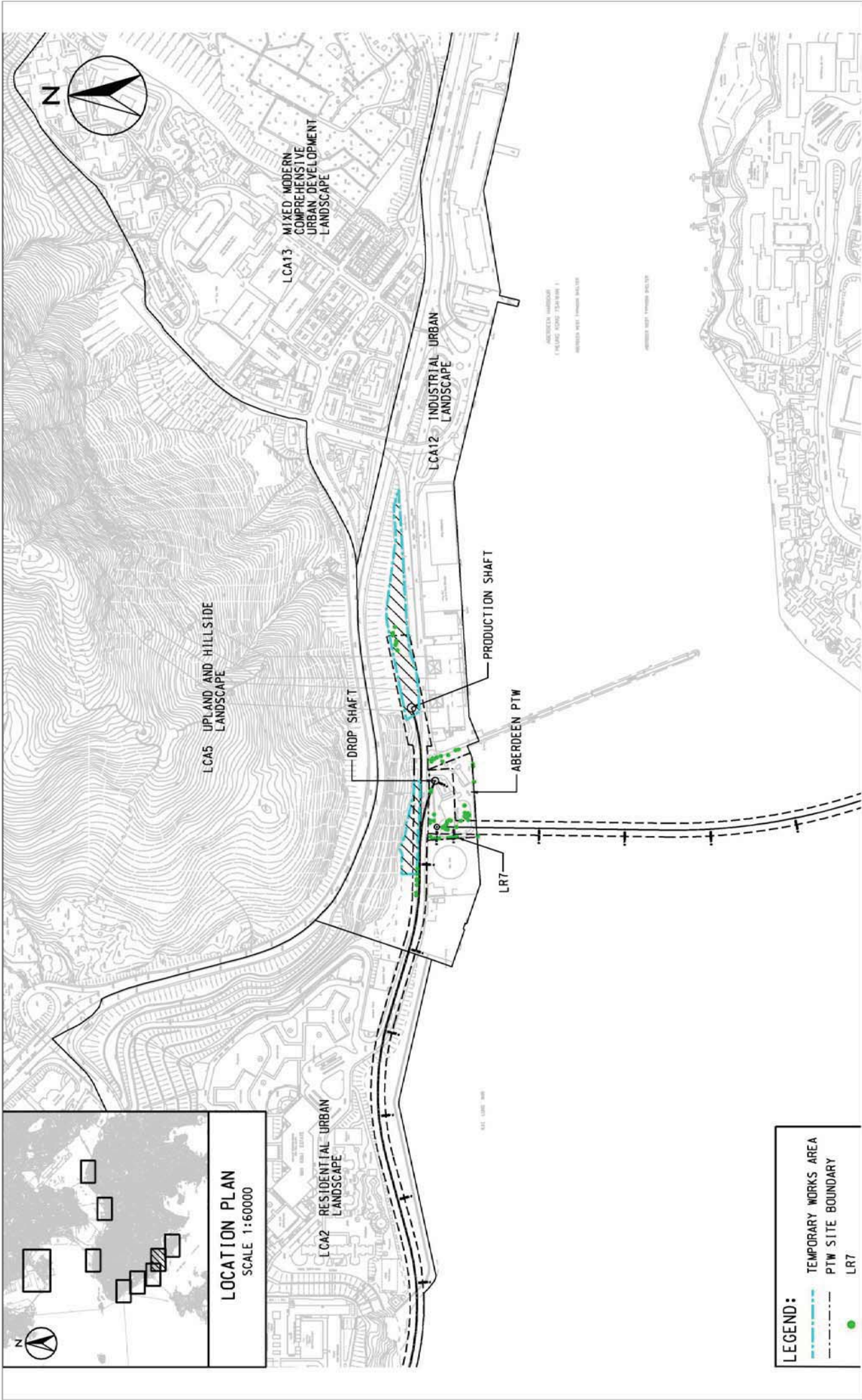


Figure 1.2

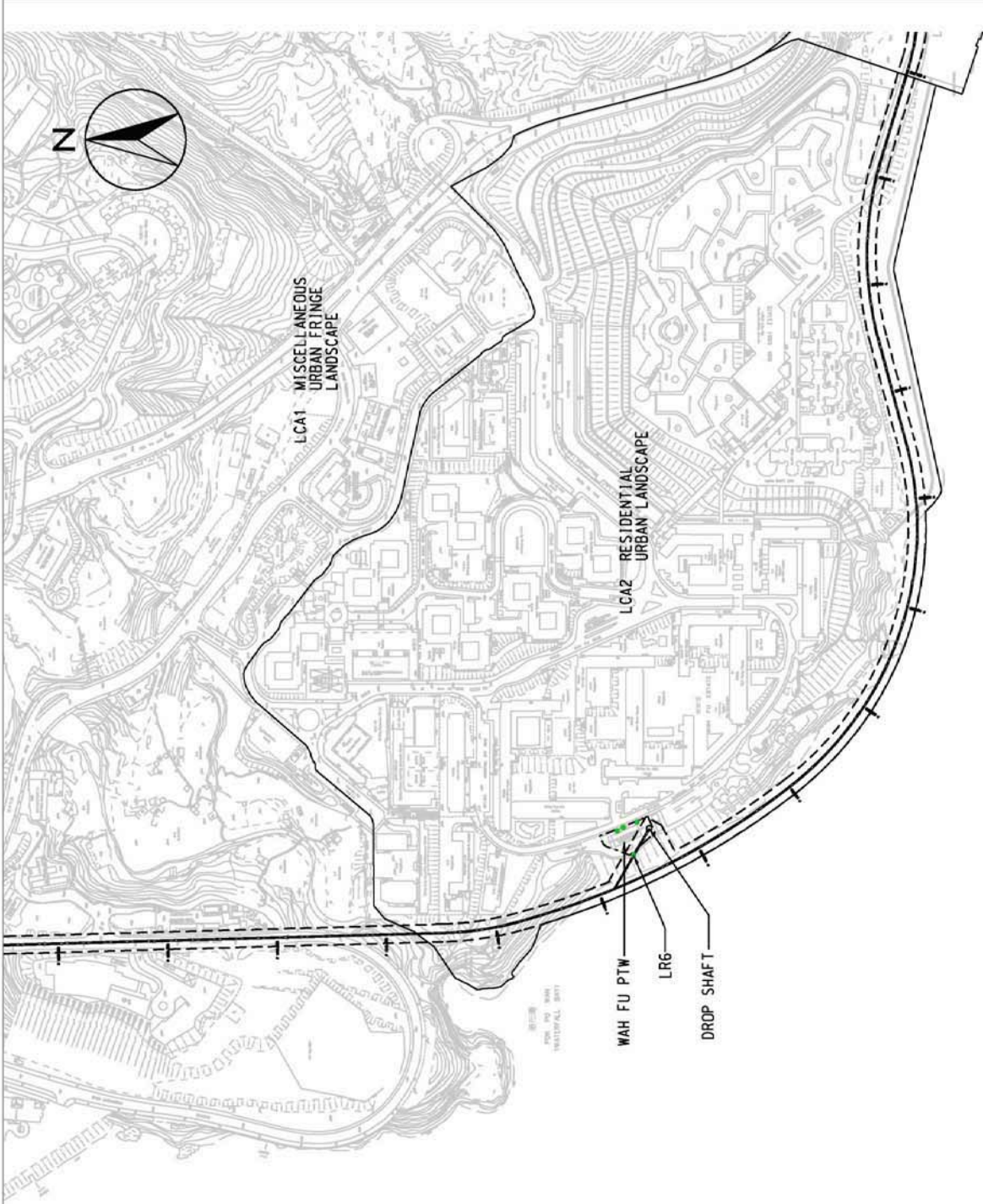
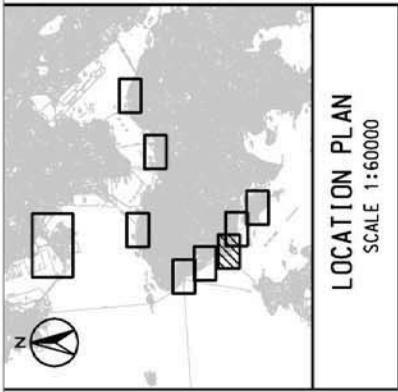


Figure 1.3

Contract No. DC/2007/24
 Harbour Area Treatment Scheme Stage 2A
 Construction of Sewage Conveyance System from Aberdeen to Sai Ying Pun
 Baseline Landscape Monitoring Locations in Wah Fu

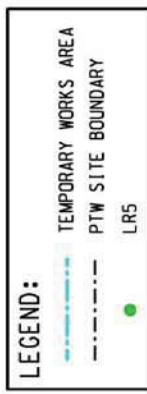
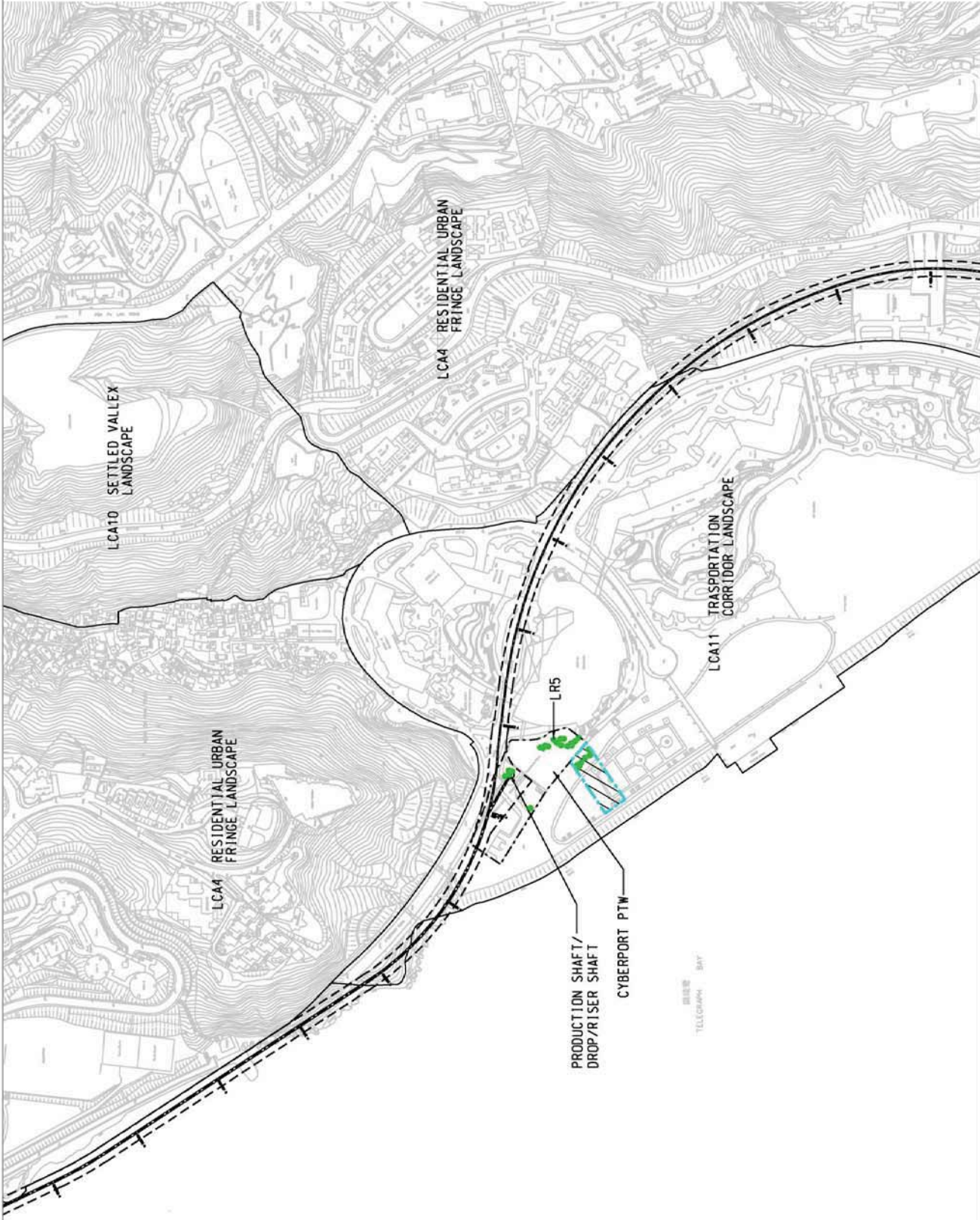
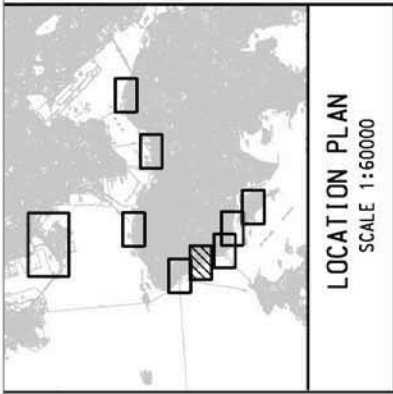


Figure 1.4

Contract No. DC/2007/24
 Harbour Area Treatment Scheme Stage 2A
 Construction of Sewage Conveyance System from Aberdeen to Sai Ying Pun
 Baseline Landscape Monitoring Locations in Cyberport



LEGEND:

- TEMPORARY WORKS AREA
- PTW SITE BOUNDARY
- LR4

Figure 1.5

Contract No. DC/2007/24
 Harbour Area Treatment Scheme Stage 2A
 Construction of Sewage Conveyance System from Aberdeen to Sai Ying Pun
 Baseline Landscape Monitoring Locations in Sandy Bay



LCA1
Miscellaneous Urban Fringe Landscape



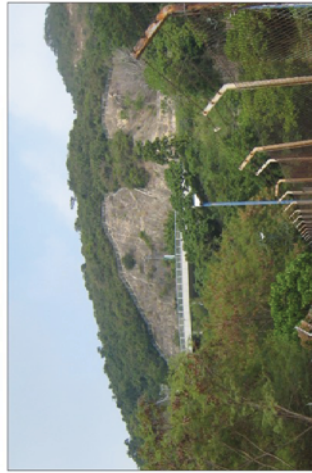
LCA2
Residential Urban Landscape



LCA3
City Grid Mixed Urban Landscape



LCA4
Residential Urban Fringe Landscape



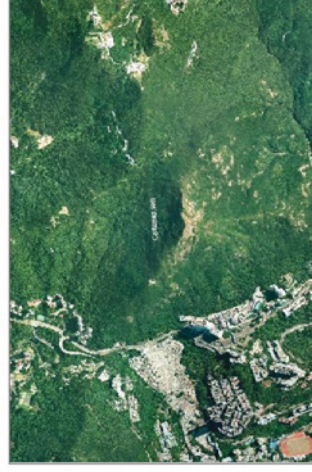
LCA5
Upland and Hillside Landscape



LCA8
Organic Mixed Urban Development Landscape



LCA9
Coastal Upland and Hillside Landscape



LCA10
Settled Valley Landscape



LCA11
Transportation Corridor Landscape



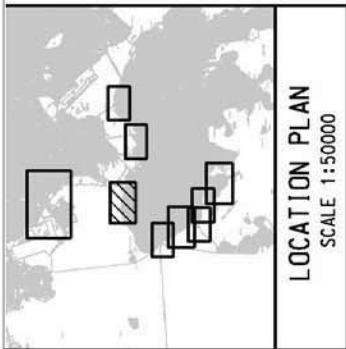
LCA12
Industrial Urban Landscape



LCA13
Mixed Modern Comprehensive
Urban Development Landscape

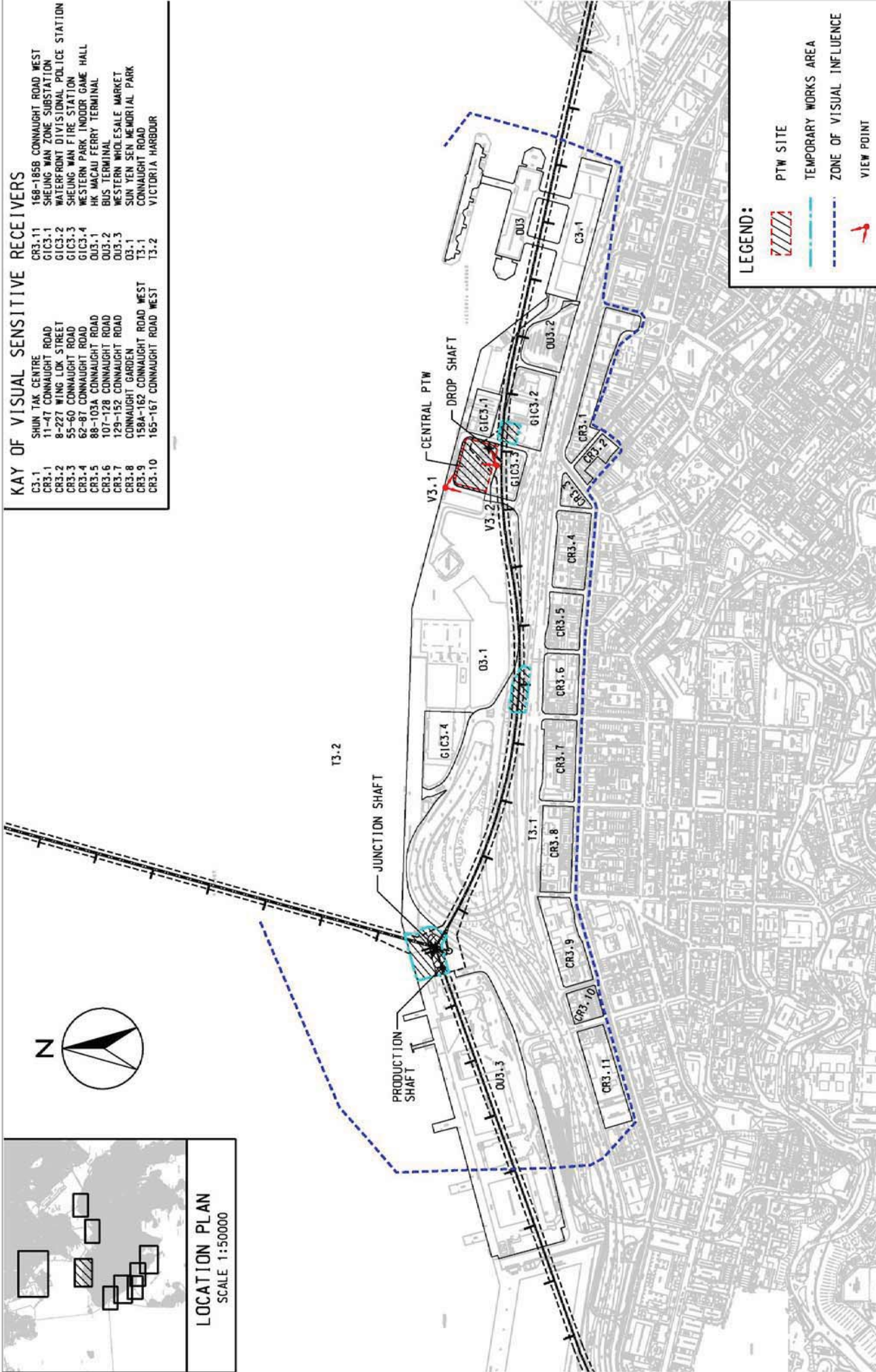
Figure 1.6

Contract No. DC/2007/24
Harbour Area Treatment Scheme Stage 2A
Construction of Sewage Conveyance System from Aberdeen to Sai Ying Pun
Baseline Landscape Monitoring - Existing Landscape Character Areas (LCAs)



KAY OF VISUAL SENSITIVE RECEIVERS

C3.1	SHUN TAK CENTRE	CR3.11	168-185B CONNAUGHT ROAD WEST
CR3.1	11-47 CONNAUGHT ROAD	GIC3.1	SHEUNG WAN ZONE SUBSTATION
CR3.2	8-227 WING LOK STREET	GIC3.2	WATERFRONT DIVISIONAL POLICE STATION
CR3.3	55-60 CONNAUGHT ROAD	GIC3.3	SHEUNG WAN FIRE STATION
CR3.4	62-87 CONNAUGHT ROAD	GIC3.4	WESTERN PARK INDOOR GAME HALL
CR3.5	88-103A CONNAUGHT ROAD	OU3.1	HK MACAU FERRY TERMINAL
CR3.6	107-128 CONNAUGHT ROAD	OU3.2	BUS TERMINAL
CR3.7	129-152 CONNAUGHT ROAD	OU3.3	WESTERN WHOLESALE MARKET
CR3.8	CONNAUGHT GARDEN	OB.1	SUN YEN SEN MEMORIAL PARK
CR3.9	158A-162 CONNAUGHT ROAD WEST	T3.1	CONNAUGHT ROAD
CR3.10	165-167 CONNAUGHT ROAD WEST	T3.2	VICTORIA HARBOUR



LEGEND:

- PTW SITE
- TEMPORARY WORKS AREA
- ZONE OF VISUAL INFLUENCE
- VIEW POINT



Environmental Resources Management

Contract No. DC/2007/24
 Harbour Area Treatment Scheme Stage 2A
 Construction of Sewage Conveyance System from Aberdeen to Sai Ying Pun
 Baseline Visual Monitoring Locations in Sai Ying Pun

Figure 1.7
 FILE: 0109356-HATS2A-VisualB-1.7-VSRLocation-SYP
 DATE: 07/12/2009

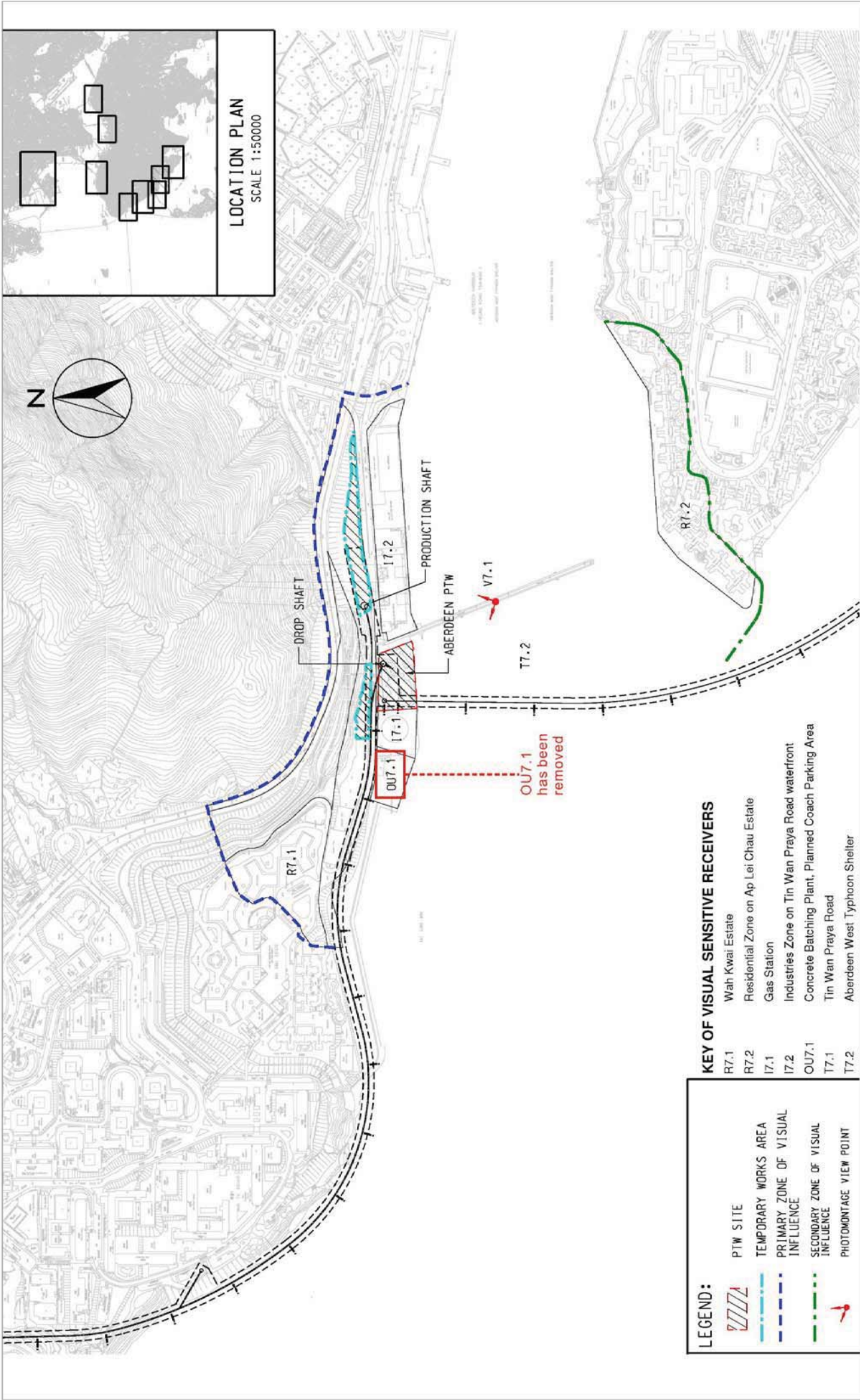
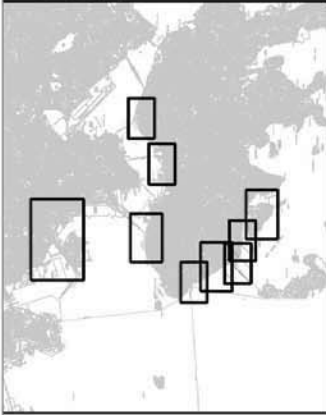


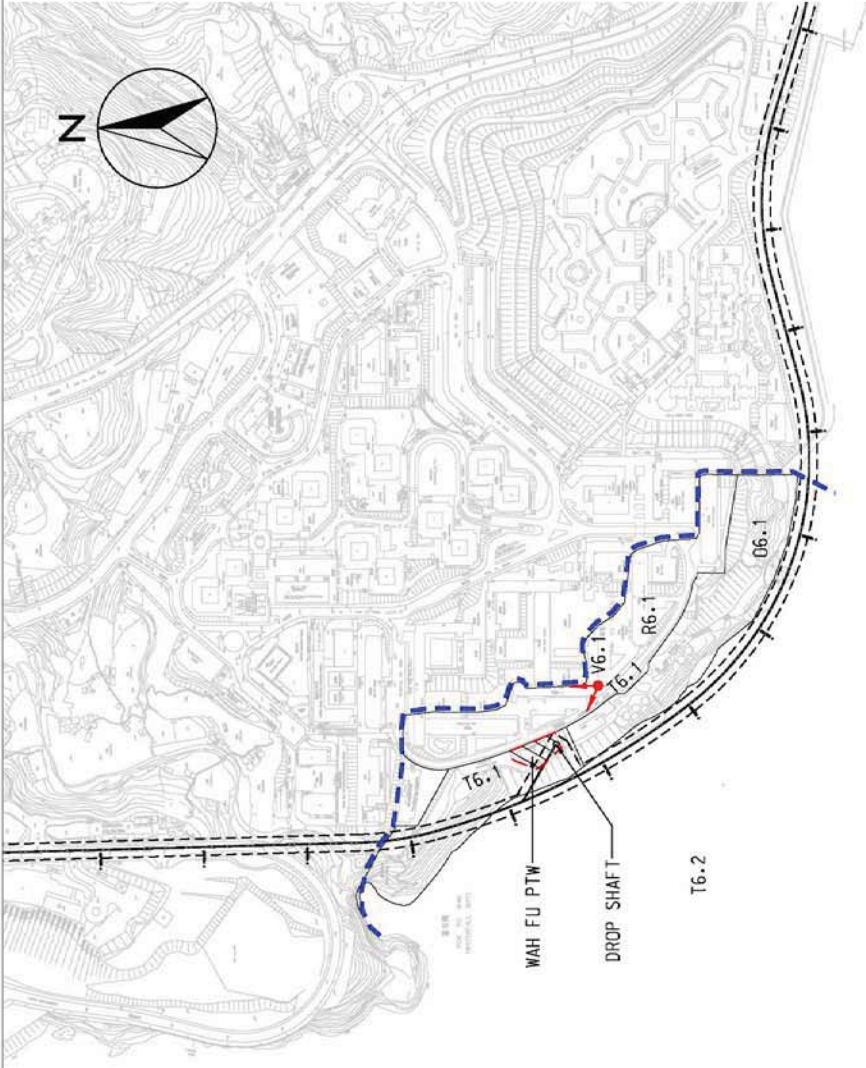
Figure 1.8

KEY OF VISUAL SENSITIVE RECEIVERS

- R6.1 Wah Fu Estate
- O6.1 Waterfall Bay Park
- T6.1 Waterfall Bay Road
- T6.2 Sea Travellers of Pok Po Wan



LOCATION PLAN
SCALE 1:50000

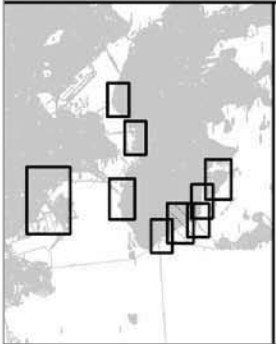


LEGEND:

- PTW SITE
- ZONE OF VISUAL INFLUENCE
- PHOTOMONTAGE VIEW POINT

Figure 1.9

Contract No. DC/2007/24
Harbour Area Treatment Scheme Stage 2A
Construction of Sewage Conveyance System from Aberdeen to Sai Ying Pun
Baseline Visual Monitoring Locations in Wah Fu

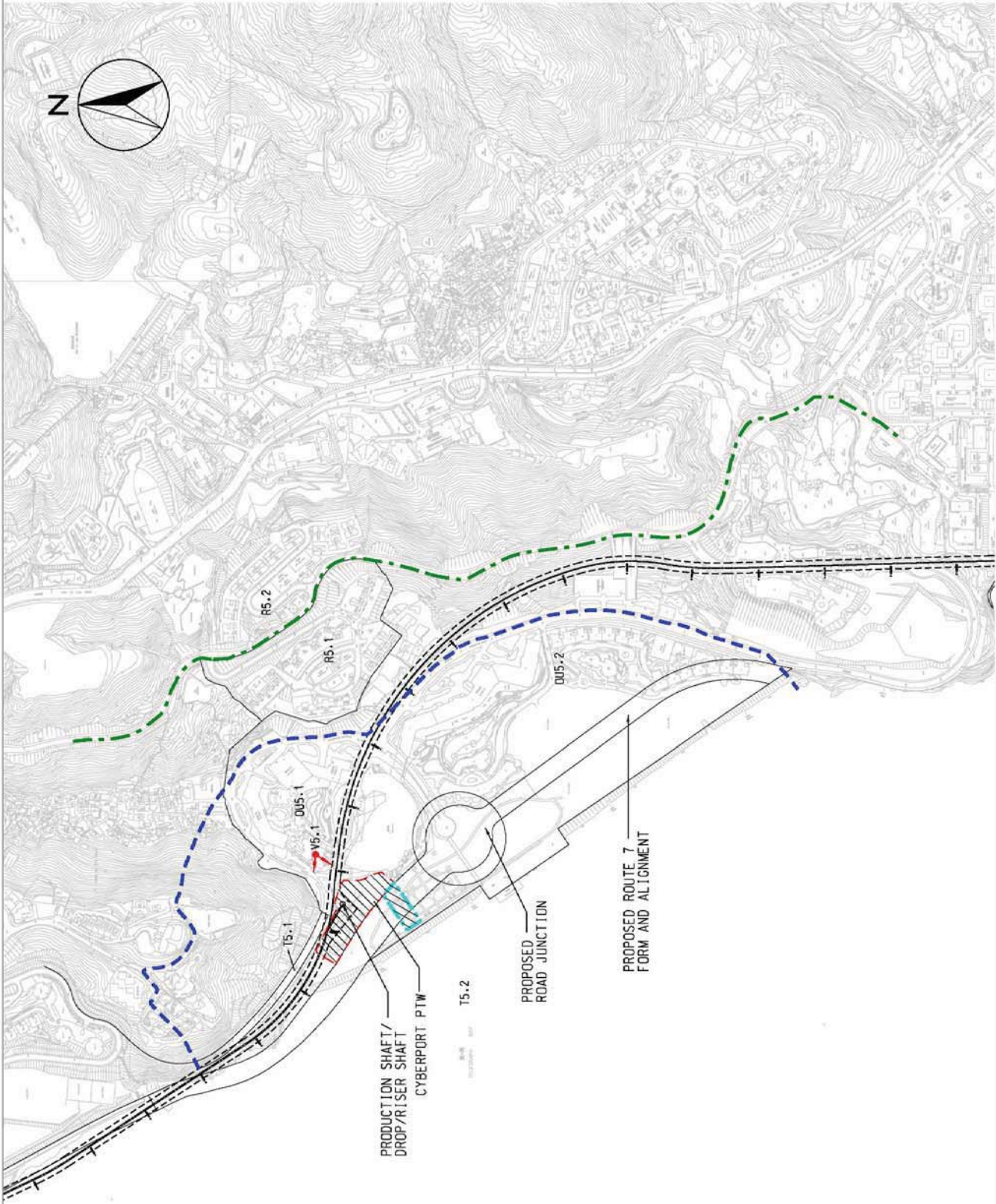


LOCATION PLAN

SCALE 1:50000

KEY OF VISUAL SENSITIVE RECEIVERS

- RS.1 Lower Baguio Villa
- RS.2 Upper Baguio Villa
- OU5.1 Cyber Centre
- OU5.2 Bel-air
- T5.1 Cyberport Road
- T5.2 Sea Travellers of Telegraph Bay

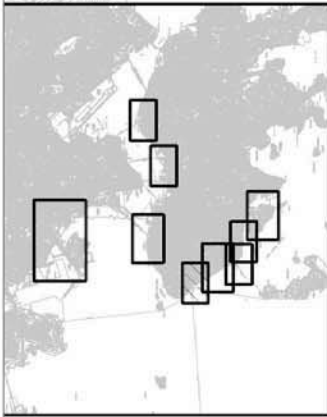


LEGEND:

- PTW SITE
- TEMPORARY WORKS AREA
- PRIMARY ZONE OF VISUAL INFLUENCE
- SECONDARY ZONE OF VISUAL INFLUENCE
- PHOTOMONTAGE VIEW POINT

Figure 1.10

Contract No. DC/2007/24
 Harbour Area Treatment Scheme Stage 2A
 Construction of Sewage Conveyance System from Aberdeen to Sai Ying Pun
 Baseline Visual Monitoring Locations in Cyberport



LOCATION PLAN

SCALE 1:50000

KEY OF VISUAL SENSITIVE RECEIVERS

- CR4.1 Residential Block on Shia Wan Drive
- GIC4.1 Canossian Retreat House
- GIC4.2 Duchess of Kent Children Hospital
- GIC4.3 1-15 Sandy Bay Road
- GIC4.4 Kennedy School
- GIC4.5 HKU Stanley Ho Sport Centre
- OU4.1 Chinese Christian Cemetery
- O4.1 Sandy Bay
- T4.1 Sandy Bay Drive
- T4.2 Sea Travellers of Sandy Bay

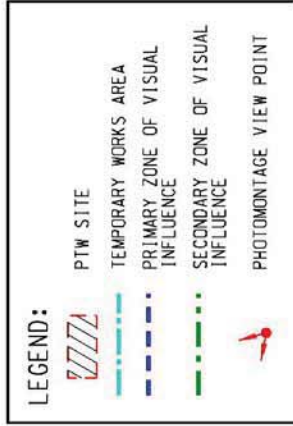
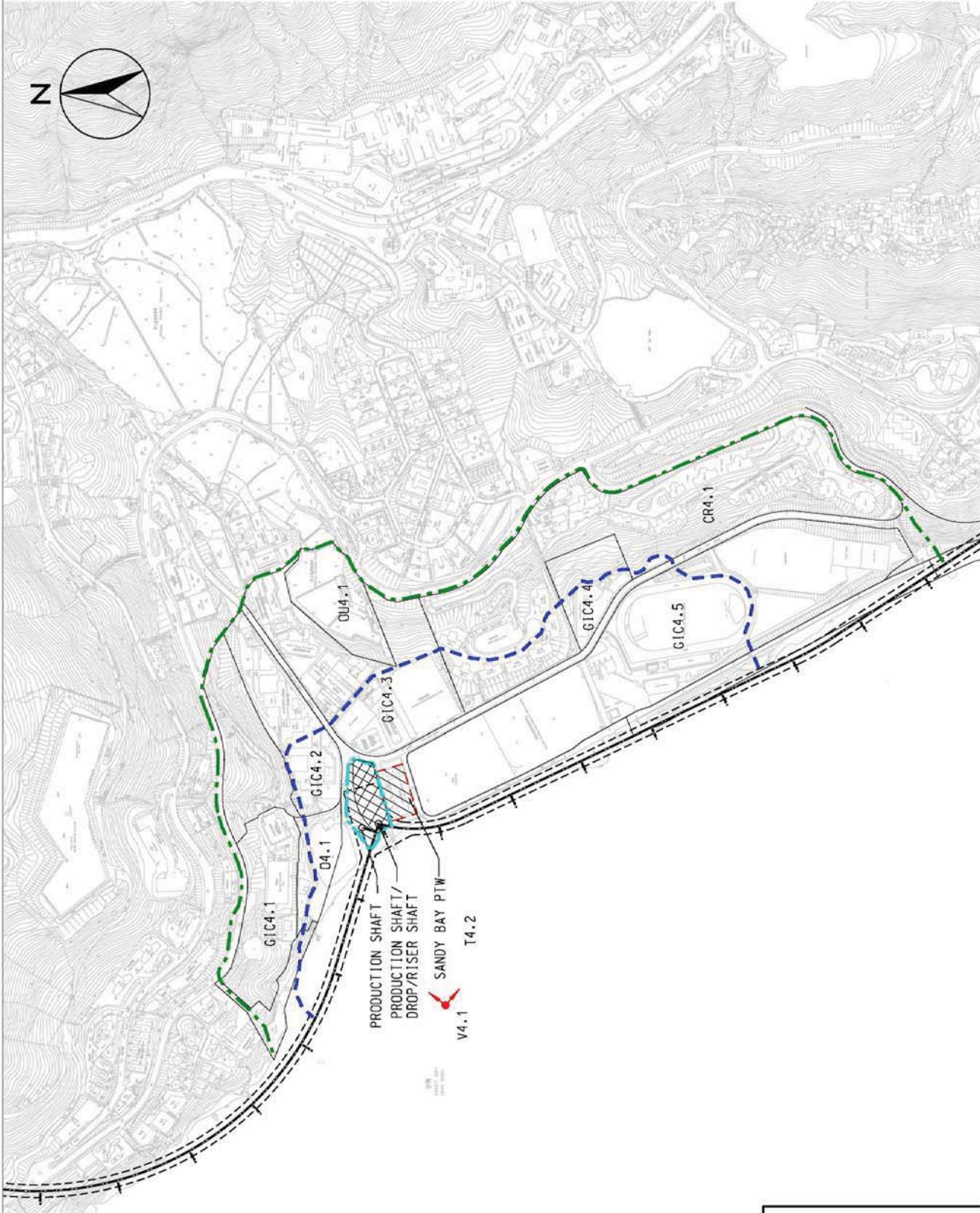


Figure 1.11

Contract No. DC/2007/24
 Harbour Area Treatment Scheme Stage 2A
 Construction of Sewage Conveyance System from Aberdeen to Sai Ying Pun
 Baseline Visual Monitoring Locations in Sandy Bay



G1C3.4

Photo from EIA Report



Photo from Baseline Site Visit



T3.1

Photo from EIA Report



Photo from Baseline Site Visit



T3.2

Photo from EIA Report



T3.2

Photo from Baseline Site Visit



O03.3

Photo from EIA Report



Photo from Baseline Site Visit

Figure 1.12

Contract No. DC/2007/24
 Harbour Area Treatment Scheme Stage 2A
 Construction of Sewage Conveyance System from Aberdeen to Sai Ying Pun
 Baseline Visual Monitoring Locations and Results in Sai Ying Pun

FILE: 0104887-HATS-VisualB-1.12-results-C-002
 DATE: 07/12/2009



R7.1

Photo from EIA Report



Photo from Baseline Site Visit



T7.1

Photo from EIA Report



Photo from Baseline Site Visit



T7.1

Photo from EIA Report



Photo from Baseline Site Visit



R7.2

R7.2

Photo from EIA Report



Photo from Baseline Site Visit



T7.2

Photo from EIA Report



Photo from Baseline Site Visit



T7.2

Photo from EIA Report

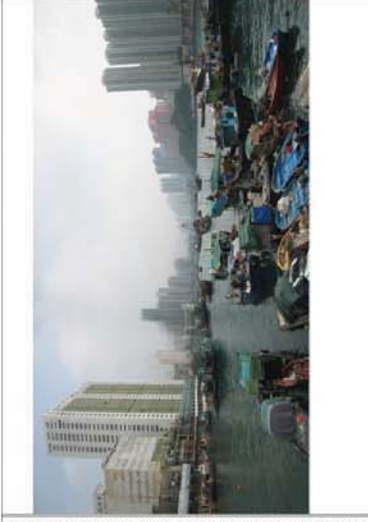


Photo from Baseline Site Visit

Figure 1.13

Contract No. DC/2007/24
 Harbour Area Treatment Scheme Stage 2A
 Construction of Sewage Conveyance System from Aberdeen to Sai Ying Pun
 Baseline Visual Monitoring Locations and Results in Aberdeen

FILE: 0109356-HATS2A-VisualB-1.13-results-A-001
 DATE: 03/12/2009



Photo from EIA Report

R7.1, 17.1, OUF.1



Photo from Baseline Site Visit

Figure 1.14

FILE: 0109356-HATS2A-VisualB-1.14-results-A-002
DATE: 03/12/2009

Contract No. DC/2007/24
Harbour Area Treatment Scheme Stage 2A
Construction of Sewage Conveyance System from Aberdeen to Sai Ying Pun4
Baseline Visual Monitoring Locations and Results in Aberdeen



R6.1

Photo from EIA Report



(Taken from a lower angle due to inaccessibility)

Photo from Baseline Site Visit



T6.1

Photo from EIA Report



Photo from Baseline Site Visit



06.1

Photo from EIA Report



(Taken from a lower angle due to inaccessibility)

Photo from Baseline Site Visit

Figure 1.15

FILE: 0109356-HATS2A-VisualB-1.15-results-WF-001
DATE: 03/12/2009

Contract No. DC/2007/24
Harbour Area Treatment Scheme Stage 2A
Construction of Sewage Conveyance System from Aberdeen to Sai Ying Pun
Baseline Visual Monitoring Locations and Results in Wah Fu



R5.1

Photo from EIA Report



Photo from Baseline Site Visit



R5.2

Photo from EIA Report



Photo from Baseline Site Visit



OU5.1

Photo from EIA Report



Photo from Baseline Site Visit



OU5.2

Photo from EIA Report



Photo from Baseline Site Visit



T5.1

Photo from EIA Report



Photo from Baseline Site Visit

Figure 1.16

FILE: 0109356-HATS2A-VisualB-1.16-results-C-001
DATE: 03/12/2009

Contract No. DC/2007/24
Harbour Area Treatment Scheme Stage 2A
Construction of Sewage Conveyance System from Aberdeen to Sai Ying Pun
Baseline Visual Monitoring Locations and Results in Cyberport



CR4.1 RESIDENTIAL BLOCK
ON SHA WAN DRIVE

Photo from EIA Report



Photo from Baseline Site Visit



G1C4.2 DUCHESS OF KENT
CHILDREN HOSPITAL

Photo from EIA Report



Photo from Baseline Site Visit



G1C4.4 KENNEDY SCHOOL

Photo from EIA Report



Photo from Baseline Site Visit



G1C4.1 CANDOSSAN RETREAT HOUSE

Photo from EIA Report



Photo from Baseline Site Visit



G1C4.3 1-15 SANDY BAY ROAD

Photo from EIA Report



Photo from Baseline Site Visit



G1C4.5 HKU STANLEY HO SPORT CENTRE

Photo from EIA Report



Photo from Baseline Site Visit

Figure 1.17

Contract No. DC/2007/24
Harbour Area Treatment Scheme Stage 2A
Construction of Sewage Conveyance System from Aberdeen to Sai Ying Pun
Baseline Visual Monitoring Locations and Results in Sandy Bay



04.1 CHINESE CHRISTIAN CEMETERY

Photo from EIA Report



Photo from Baseline Site Visit



T4.1 SANDY BAY DRIVE

Photo from EIA Report



Photo from Baseline Site Visit



04.1 SANDY BAY

Photo from EIA Report



Photo from Baseline Site Visit

Figure 1.18

FILE: 0109356-HATS2A-VisualB-1.18-results-SB-002
DATE: 03/12/2009

Contract No. DC/2007/24
Harbour Area Treatment Scheme Stage 2A
Construction of Sewage Conveyance System from Aberdeen to Sai Ying Pun
Baseline Visual Monitoring Locations and Results in Sandy Bay

Annex A

Supporting Information



禮頓 - 利安聯營
Harbour Area
Treatment Scheme

FAXED
29 SEP 2009

By Hand and by Fax: (852) 2986 4053

26 September 2009

Your Ref.:

Our Ref.: LLNSJV/2009/DC200724/000275

Leighton - LNS Joint Venture

39th Floor
Sun Hung Kai Centre
30 Harbour Road
Hong Kong

t: (852) 2823-1111
f: (852) 2529-8784
e: info@leightonasia.com

Metcalf & Eddy – AECOM Joint Venture
8th Floor Grand Central Plaza, Tower 2,
138 Shatin Rural Committee Road,
Shatin, NT
Hong Kong

Attn: Mr. Simon Mui – Chief Resident Engineer

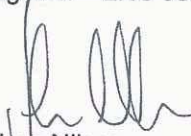
Dear Sir,

Contract No. DC/2007/24
Harbour Area Treatment Scheme Stage 2A
Construction of Sewage Conveyance System from Aberdeen to Sai Ying Pun
Aberdeen PTW – Trees No. T001 & T002

We write to record that the trees located in Aberdeen PTW no. T001 and T002 as shown on the attachment had been pruned and removed respectively by Drainage Sewage Department Sewage Treatment 2 Division on 16 September after Typhoon Signal no.8 on 14 September 2009.

Please find herewith the attached record photos for your reference.

Yours faithfully,
For and on behalf of
Leighton – LNS Joint Venture


Johan Nilsson
Project Director

JN/JC/BY/TWLam/jy

Encl.

c.c. K K Wong, T W Lam

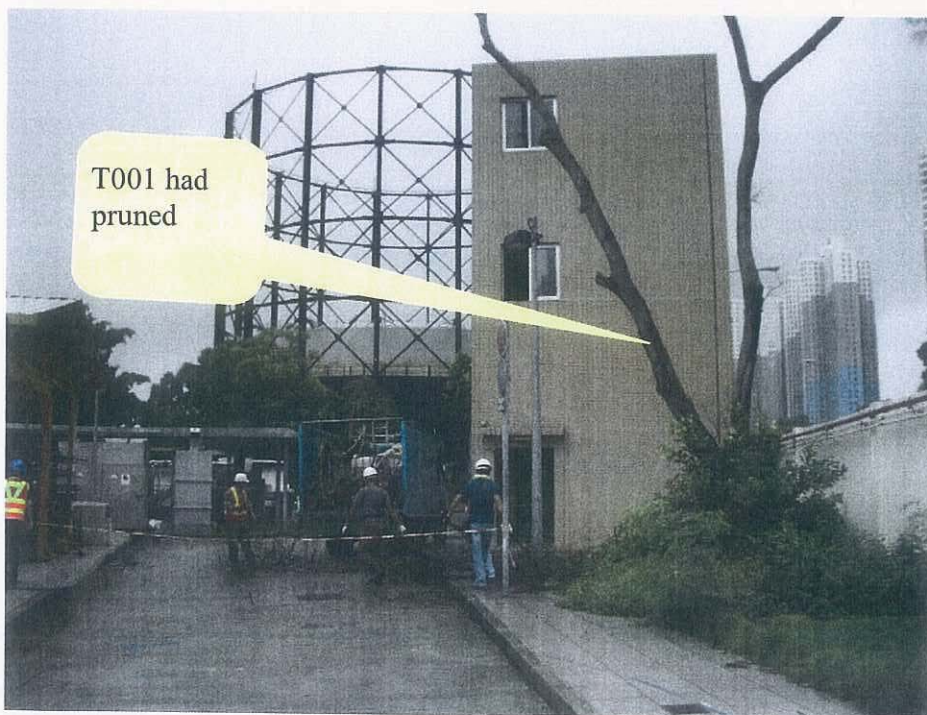
OUT (020275)

Leighton-LNS Joint Venture		
Date: 29 SEP 2009		
File:	CDP	
Confidential		
OCR Scan		
Position	Copy	Act
PD		
CM	•	
COMM	•	✓
ENG	•	
QUALITY	•	
BLAST		
ENV		
PARTNERS		
PLANNER		
PLANT		
PSM		
SAFETY		
SURVEY		
TUNNEL		

Aberdeen Initial site photo on 31/7/2009



Aberdeen PTW – Tree remove and pruned by DSD ST2



LEGEND:

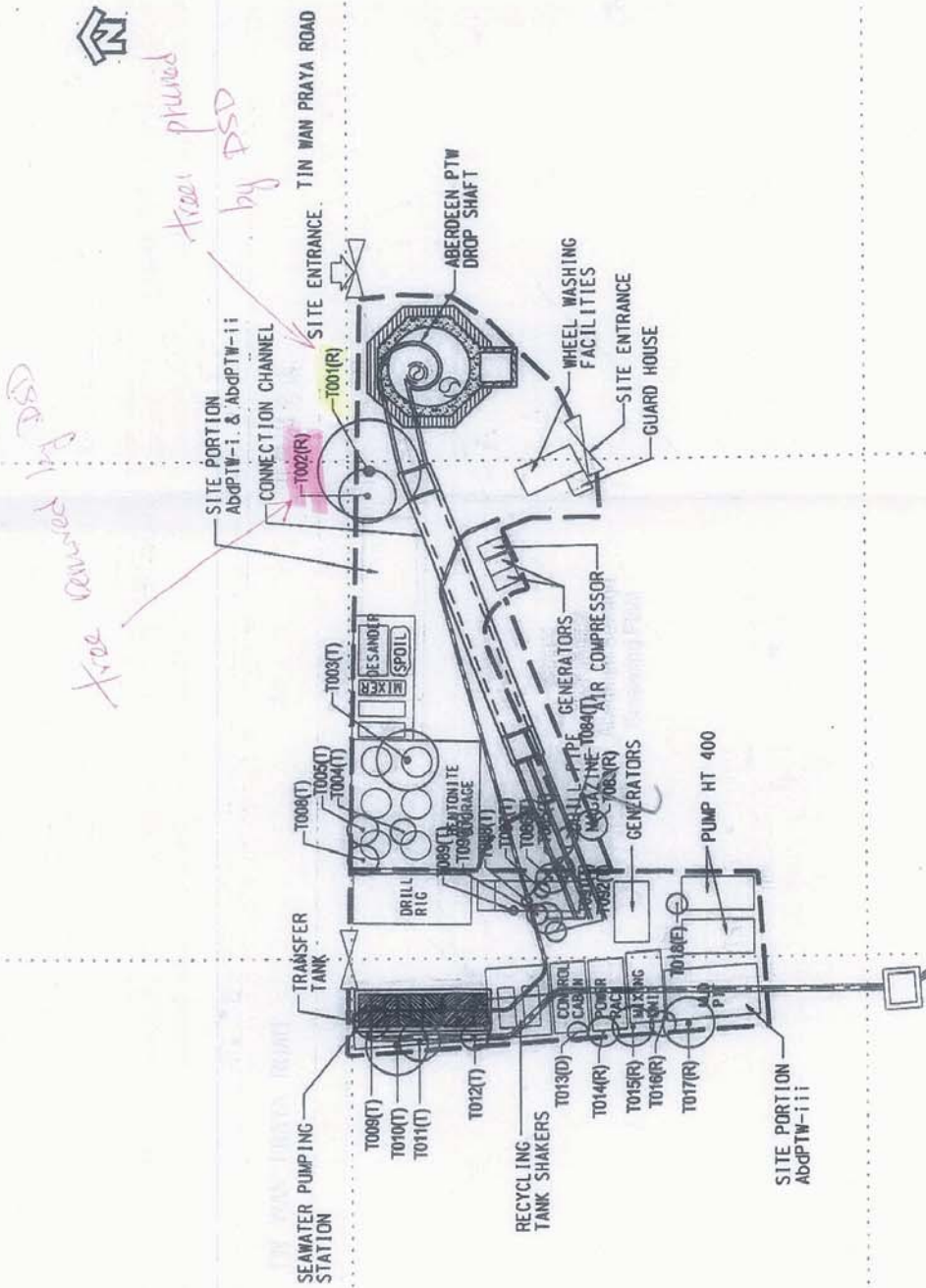
--- WORKS AREA

○ EXISTING TREE TO BE RETAINED
T001(R)

○ EXISTING TREE TO BE TRANSPLANTED
T001(T)

○ DEAD TREE TO BE REMOVED
T001(D)

EXISTING TREE OUTSIDE WORKS AREA



832700 E

832700 E

832700 E

832700 E

SCALE	A3 1:500	DATE	MAR 08
CHECK	JT	DRAWN	FL
JOB No.	90806	DRAWING No.	90806/010
REV			-

AGREEMENT NO. CE 34/2005 (DS)
HARBOUR AREA TREATMENT SCHEME STAGE 2A SEWAGE CONVEYANCE SYSTEM - INVESTIGATION, DESIGN AND CONSTRUCTION
TREE SURVEY AT ABERDEEN PTW

MAUNSELL



禮頓 - 利安聯營
Harbour Area
Treatment Scheme

By Hand and by Fax: (852) 2986 4053

14-October-2009

Your Ref:

Our Ref: LLNSJV/2009/DC200724/000352

Metcalf & Eddy - AECOM Joint Venture
8th Floor, Grand Central Plaza, Tower 2
138 Shatin Rural Committee Road
Shatin, NT
Hong Kong

Attn: Mr. Simon Mui - Chief Resident Engineer

Dear Sir,

Contract No. DC/2007/24
Harbour Area Treatment Scheme Stage 2A
Construction of Sewage Conveyance System from Aberdeen to Sai Ying Pun
Joint Inspection Record for Trees

Refer to the joint inspection between your staff Mr. Sam Yan, Mr. Paul Tang, Mr. Stephen Chan and our Mr. T.W. Lam on 9th October 2009. We would like to report that there are 2 trees in Cyberport PTW and 1 tree in Aberdeen site portion Abd-iiiia were found missing. Also 1 tree was found cut by other in Aberdeen PTW.

Please find the attached record photos and marked up drawings for record.

Yours faithfully,
For and on behalf of
Leighton - LNS Joint Venture

Johan Nilsson
Project Director

JN/JC/BY/TWLam/jy

Encl.

c.c. KK Wong, TWLam, Hilary Poon

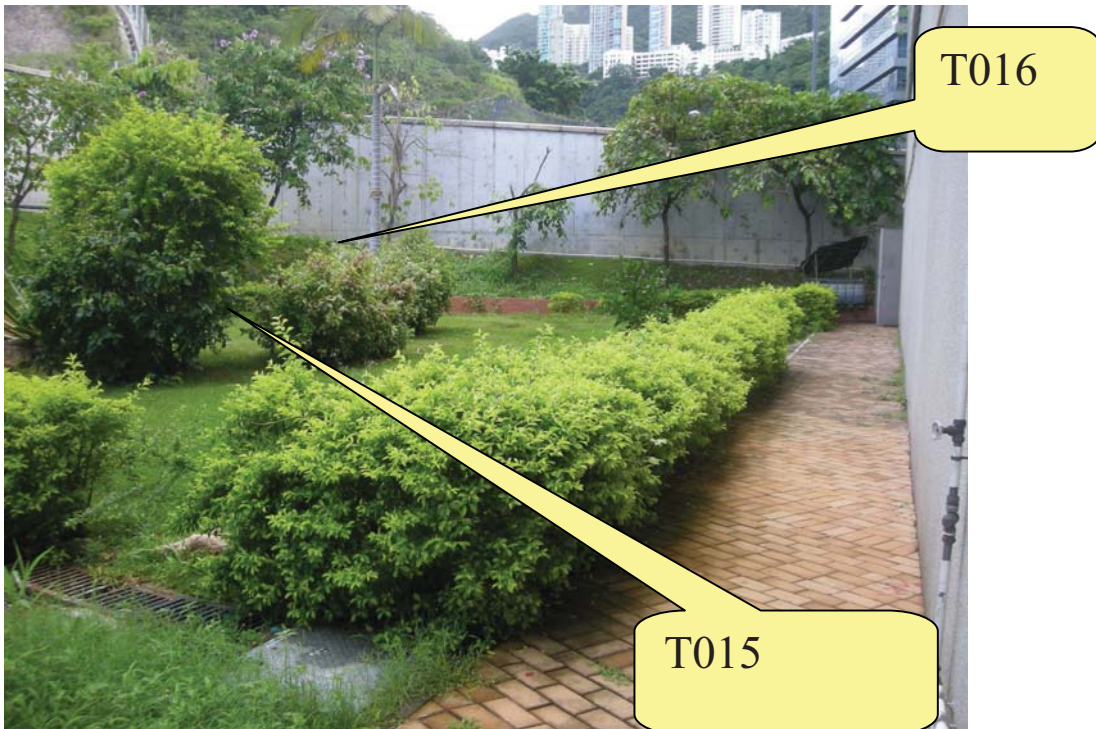
#7 OUT (352)

Leighton-LNS Joint Venture		
Date: 16 OCT 2009		
File:	CDP	
Confidential		
OCR Scan		
Position	Copy	Act
PD		
CM	✓	
COMM		
ENG		
QUALITY	✓	
BLAST		
ENV	✓	
PARTNERS		
PLANNER		
PLANT		
PSM		
SAFETY		
SURVEY		
TUNNEL		

Leighton - LNS Joint Venture
39th Floor
Sun Hung Kai Centre
30 Harbour Road
Hong Kong

t: (852) 2823-1111
f: (852) 2529-8784
e: info@leightonasia.com

Cyberport PTW – T015(T) & T016(T) were missing



Aberdeen PTW – T008(T) Cut by other



Aberdeen Abd-iiia – T082(R) was found missing



LEGEND:

WORKS AREA

EXISTING TREE TO BE RETAINED
T001(R)

EXISTING TREE TO BE TRANSPLANTED
T001(T)

DEAD TREE TO BE REMOVED
T001(D)

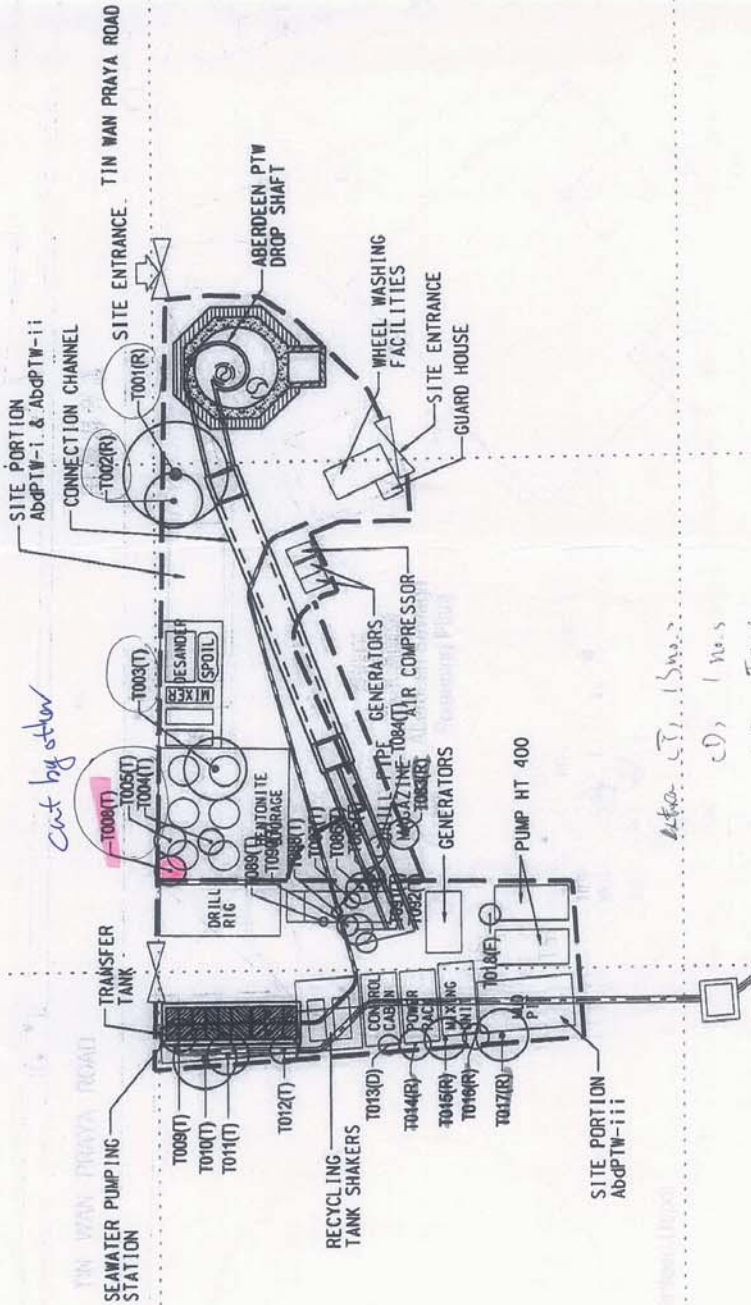
EXISTING TREE OUTSIDE WORKS AREA

832700 E

832700 E

832700 E

832700 E



HARBOUR AREA TREATMENT SCHEME STAGE 2A SEWAGE CONVEYANCE SYSTEM - INVESTIGATION, DESIGN AND CONSTRUCTION

TREE SURVEY AT ABERDEEN PTW

AGREEMENT NO. CE 34/2005 (DS)

DATE

DRAWN

DRAWING NO.

SCALE

CHECK

JOB NO.

REV

832700 E

832700 E

832700 E

832700 E

832700 E

832700 E

832700 E

832700 E

832700 E

832700 E

832700 E

832700 E

MAR 08

JT

90806

FL

90806/010

-

-

-

-

-

-

-

-

-

-

-

-

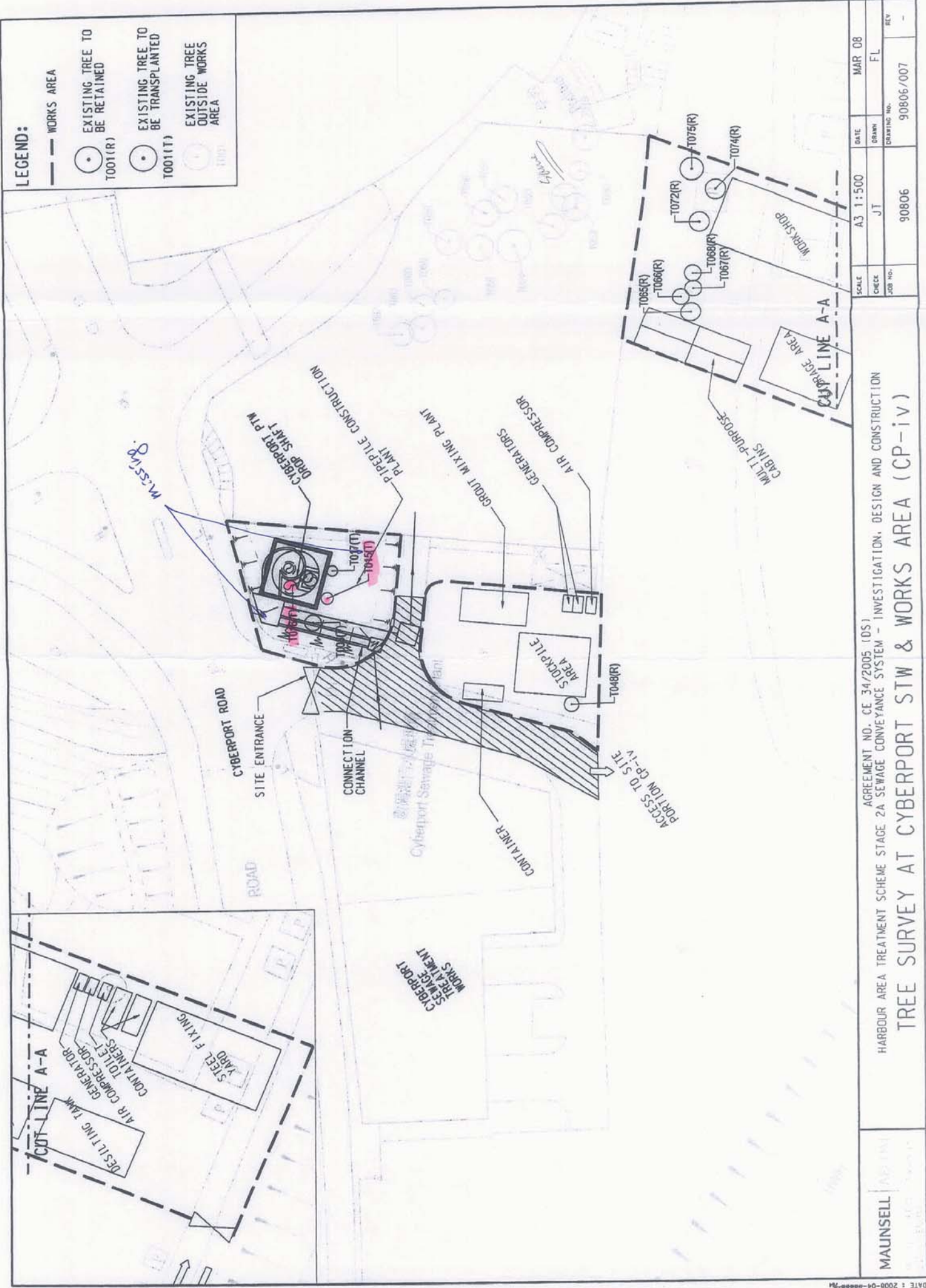
-

-

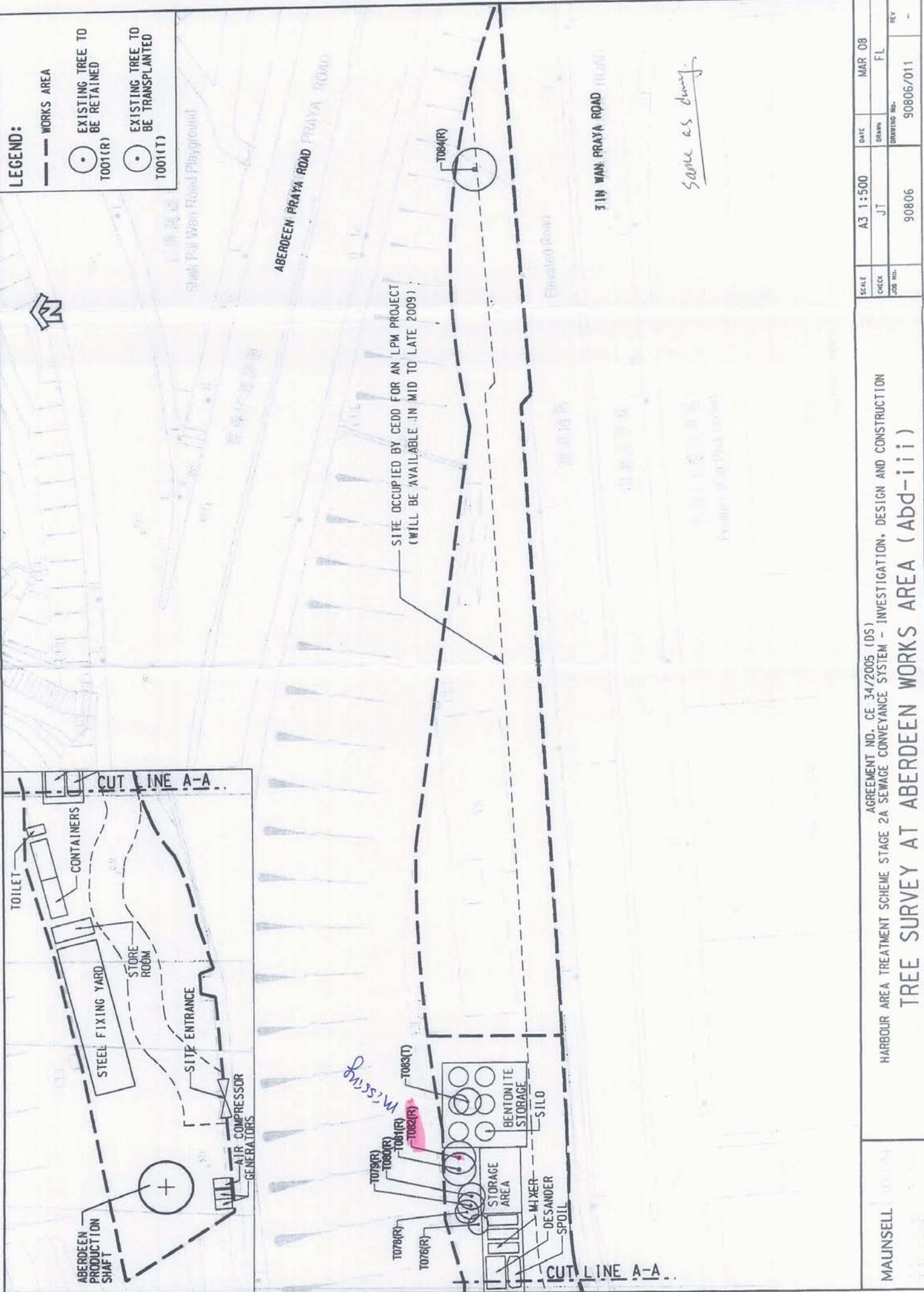
MAUNSELL

LEGEND:

- WORKS AREA
- EXISTING TREE TO BE RETAINED (T001(R))
- EXISTING TREE TO BE TRANSPLANTED (T001(T))
- EXISTING TREE OUTSIDE WORKS AREA (T001)



MAUNSELL	DESIGN	AGREEMENT NO. CE 34/2005 (DS1)	
		HARBOUR AREA TREATMENT SCHEME STAGE 2A SEWAGE CONVEYANCE SYSTEM - INVESTIGATION, DESIGN AND CONSTRUCTION	
TREE SURVEY AT CYBERPORT STW & WORKS AREA (CP-iv)		SCALE	A3 1:500
		CHECK	JT
		JOB NO.	90806
		DRAWING NO.	90806/007
		DATE	MAR 08
		FL	FL
		REV	-



AGREEMENT NO. CE 34/2005 (DS)
 HARBOUR AREA TREATMENT SCHEME STAGE 2A SEWAGE CONVEYANCE SYSTEM - INVESTIGATION, DESIGN AND CONSTRUCTION
 TREE SURVEY AT ABERDEEN WORKS AREA (Abd-iii)

SCALE	A3 1:500	DATE	MAR 08
CHECK	JT	DRAWN	FL
JOB NO.	90806	DRAWING NO.	90806/011
		REV	--

Your Ref : (8) in EP 2/G/F/137 Ax (1)
Our Ref : (DC/2007/24)/M45/150(0018)

22 January 2010

Mr. Charles Pang
Environmental Protection Officer
for Director of Environmental Protection
Environmental Protection Department
28th Floor, Southorn Centre
131 Hennessy Road
Wan Chai, Hong Kong

Chief Resident Engineer Office
HATS (Contract No. DC/2007/24)
Tel: 2980 8188
Fax: 2989 6225

Dear Sir,

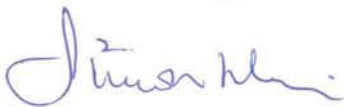
Contract No. DC/2007/24
Harbour Area Treatment Scheme Stage 2A
Construction of Sewage Conveyance System from Aberdeen to Sai Ying Pun
Baseline Monitoring Report

I refer to your captioned letter dated 22 December 2009 regarding the comments 2, 3 and 4 on the baseline monitoring report submitted by our Contractor.

Please be clarified that the 4 missing trees indicated in Table 4.3 were found missing on the Contract commencement date of 31 July 2009. Please find attached Contractor's letter for your reference.

Please also be informed that it is still under discussion with DLO regarding the compensation of missing/dead trees. I will provide to you the updated information for your reference once the captioned discussion is finalized and compensatory tree planting would be carried out as necessary.

Yours faithfully,



Simon Mui
Chief Resident Engineer
Metcalf & Eddy – AECOM Joint Venture


SM/BC/PT/cw

Encl.

c.c. CE/HATS, DSD – Attn: Mr. Chau Kwok Ming / Mr. Raymond Seit
AECOM (HO) – Attn: Mr. Keith Tsang
LLNSJV



Attachment

By Hand

21 January 2010

Your Ref:

Our Ref: LLNSJV/2009/DC200724/001142

Metcalf & Eddy-AECOM Joint Venture
8th Floor, Grand Central Plaza, Tower 2
138 Shatin Rural Committee Road
Shating, NT
Hong Kong

Attn: Mr. Simon Mui – Chief Resident Engineer

Leighton - LNS Joint Venture
39th Floor
Sun Hung Kai Centre
30 Harbour Road
Hong Kong

t: (852) 3665-3665
f: (852) 2989-6033
e: info@leightonasia.com

Dear Sirs,

Contract No. DC/2007/24
Harbour Area Treatment Scheme Stage 2A
Construction of Sewage Conveyance System from Aberdeen to Sai Ying Pun
Missing trees in Aberdeen and Cyberport

Further to our letters with reference LLNSJV/2009/DC200724/000352 and DC2007/24/CSF/CS/00019A, please find the attached initial photos during the joint inspection with your representatives on the handover date (31-7-09) of our project. Please note the mentioned trees (T015, T016 and T082) were missed at that moment.

Yours faithfully,
For and on behalf of
Leighton - LNS Joint Venture

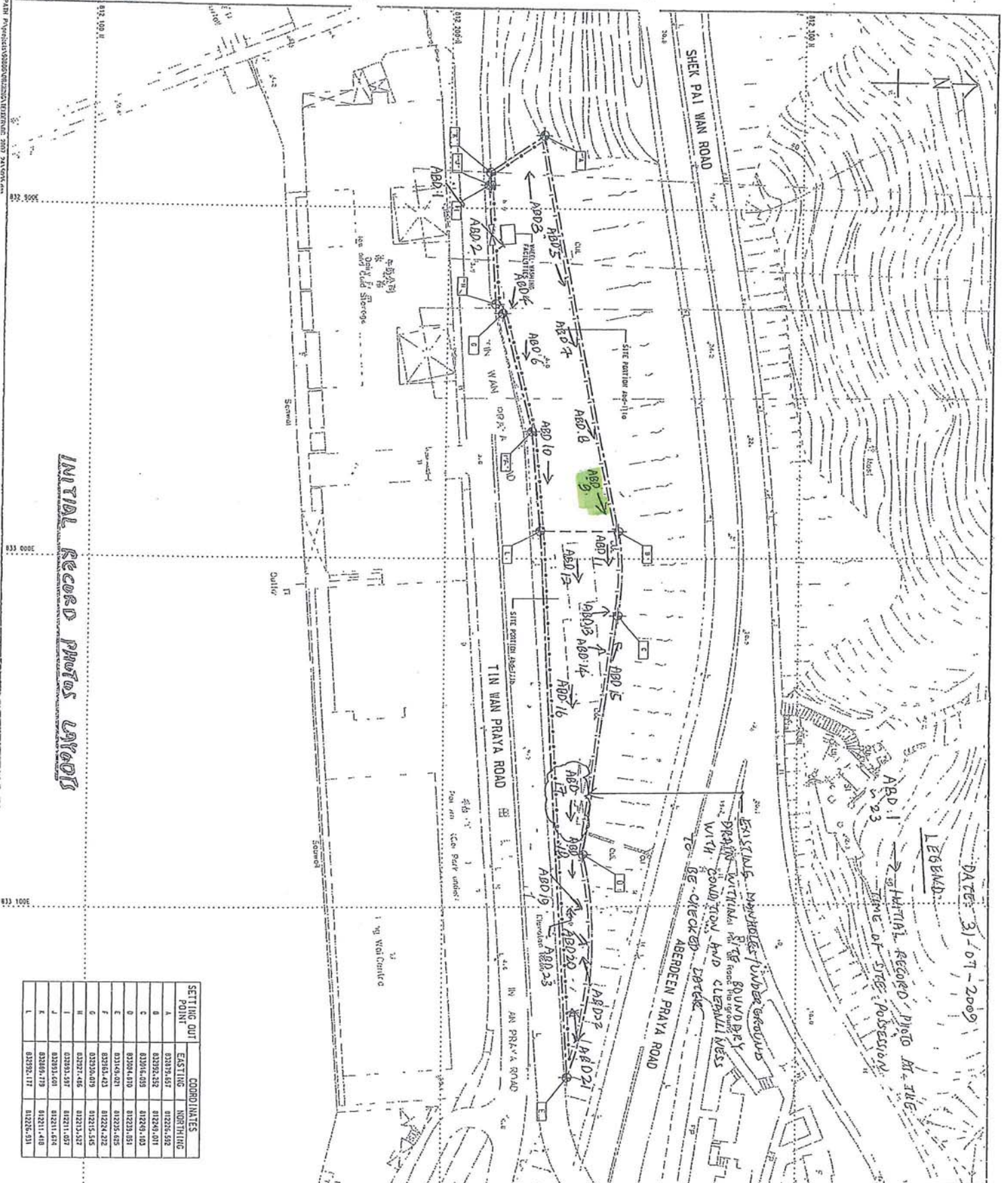


Johan Nilsson
Project Director

JN/JC/HP/TWL/ah

Encl.

c.c. LC



INITIAL RECORD PHOTOS 2009

DATE: 31/07/2009
 LEGEND:
 → INITIAL RECORD PHOTO AT THE TIME OF SITE POSSESSION

EXISTING MANHOLE UNDERGROUND
 DRAWN WITHIN THE ROUND BY
 WITH CONSTRUCTION AND CLEARANCE
 TO BE CHECKED BEFORE

LOCATION PLAN
 SCALE 1:10000

NOTES:

- FOR NOTES AND LEGEND, REFER TO DRAWING 90806/DC 2007 24/5005
- SITE POSITION LOCATION IS ACCORDING TO AERIAL PHOTO AND FIELD SURVEY. MAINTAIN AN ACCESS ROAD WITH A WIDTH OF AT LEAST 3M FROM THE PERIMETER OF THE SITE POSITION. ACCESS IS INDICATED TO THE CONTRACTOR.

MAUNSELL | AECOM
 Michael & Eddy - Landmark Venture

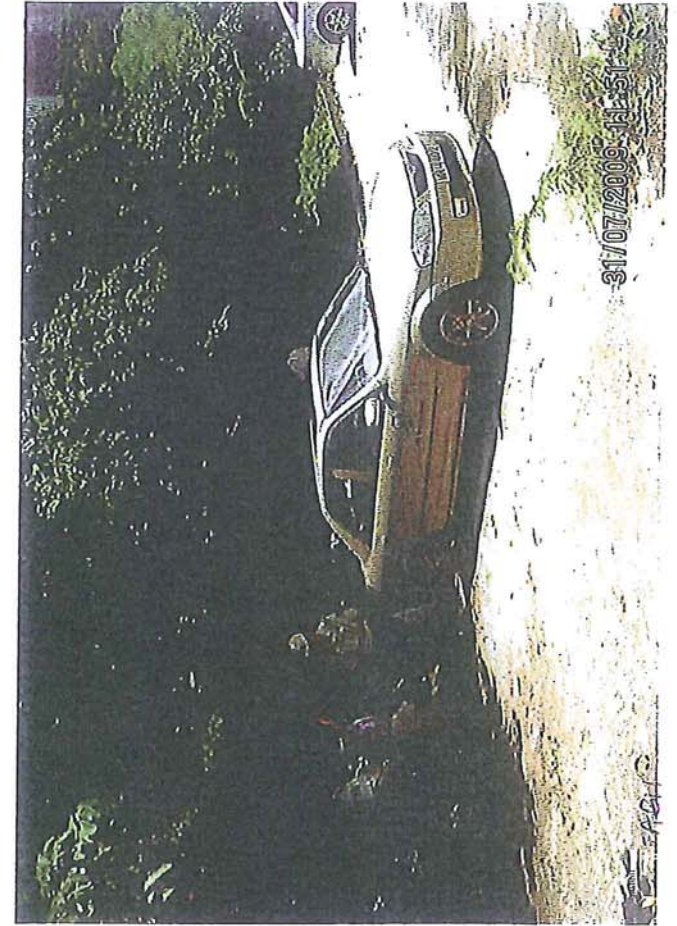
CONTRACT NO. DP2007/24
HARBOR AREA TREATMENT SCHEME STAGE 2A
CONSTRUCTION OF SEWAGE CONVERSION SYSTEM FROM ABERDEEN TO SAN TIAN PAI

SITE PLAN - ABERDEEN

DATE: 02/07/2007
 SCALE: 1:1500

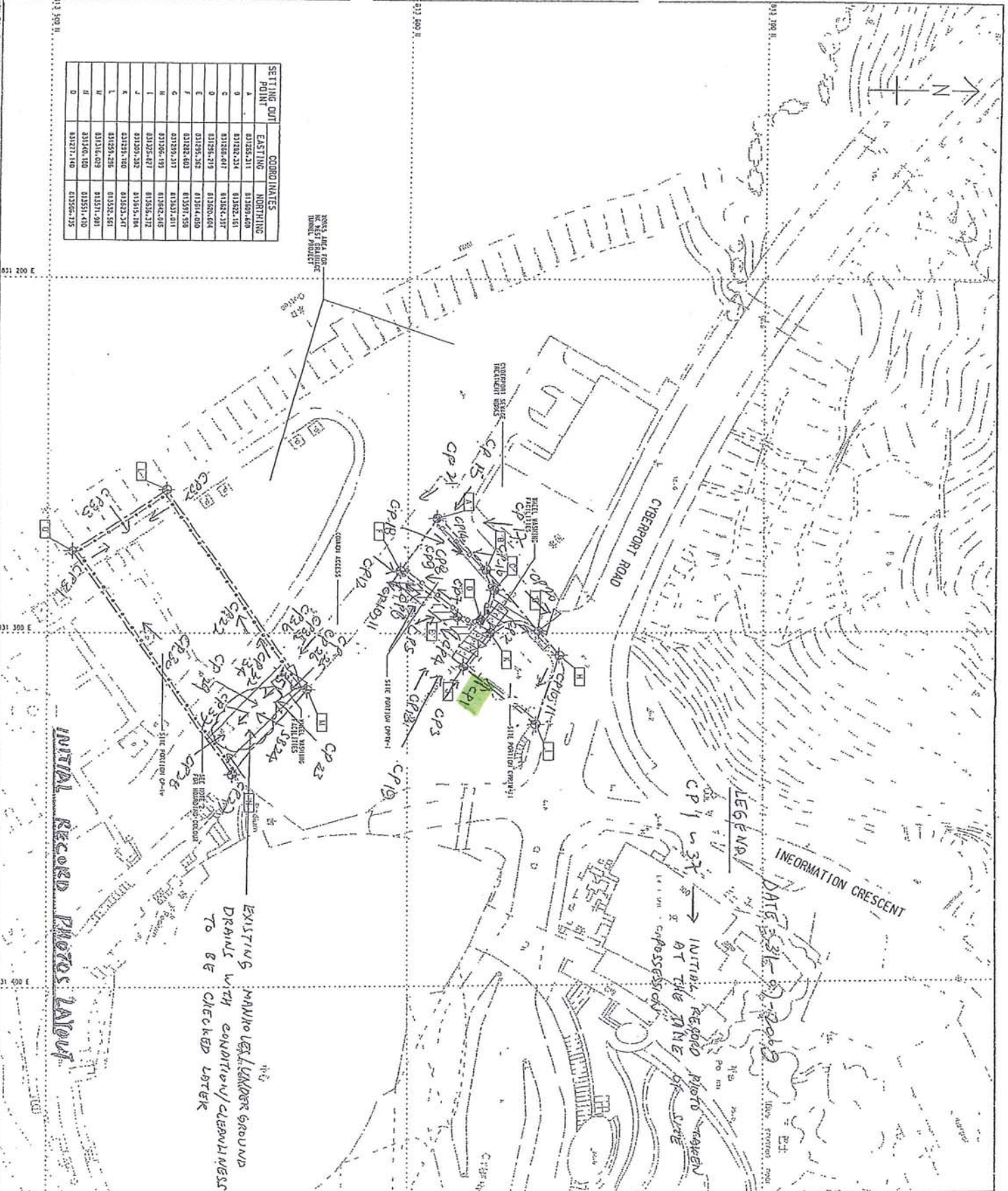
© COPYRIGHT RESERVED

ABERDEEN SITE PORTION (ABD-TITa)



ABD-TITa

SETTING OUT POINT	EASTING	NORTHING
A	01355.211	01309.469
B	01382.214	01302.451
C	01358.017	01352.137
D	01391.719	01308.608
E	01395.382	01391.420
F	01382.603	01391.558
G	01359.313	01351.611
H	01356.191	01364.465
I	01352.427	01354.172
J	01359.323	01391.184
K	01391.700	01392.347
L	01354.288	01358.561
M	01316.409	01351.501
N	01316.100	01351.410
O	01371.140	01356.115



EXISTING MANHOLE/LANDFILL GROUND DRAINAGE WITH CONCRETE/ALUMINUM MESS TO BE CHECKED LATER

INITIAL RECORD PHOTOS TAKEN

LEGEND
 CP 1 - 31 AT THE INITIAL RECORD PHOTO TAKEN AT THE TIME OF ACQUISITION

DATE 31-01-2009

<p>MAUNSELL AECOM Local & Edge - Auckland, New Zealand</p>							
<p>PROJECT: 90806/DC 2007 24/5003</p>							
<p>DATE: 11/1/2009</p>							
<p>SCALE: 1:1000</p>							
<p>NOTES: 1. FOR NOTES AND LEGEND, REFER TO 90806/DC 2007 24/5003. 2. FOR SITE POSITION, REFER TO THE COLOR CODE FOR PLANT AND EQUIPMENT ON THE 90806/DC 2007 24/5003.</p>							
<p>LOCATION PLAN SCALE 1:10000</p>							
<p>REVISIONS:</p> <table border="1"> <thead> <tr> <th>NO.</th> <th>DESCRIPTION</th> <th>DATE</th> </tr> </thead> <tbody> <tr> <td>1</td> <td>ISSUE FOR PERMIT</td> <td>11/1/2009</td> </tr> </tbody> </table>		NO.	DESCRIPTION	DATE	1	ISSUE FOR PERMIT	11/1/2009
NO.	DESCRIPTION	DATE					
1	ISSUE FOR PERMIT	11/1/2009					
<p>MANHOLE AREA TREATMENT SCHEME DESIGN CONTRACT NO. 90806/DC 2007 24/5003. THE TREATMENT SCHEME IS A CONCRETE/ALUMINUM MESS TO BE CHECKED LATER.</p>							
<p>SITE PLAN - CYBERPORT SEWAGE TREATMENT WORKS</p>							
<p>© GOVERNMENT RESERVE</p>							

CYBER PORT

