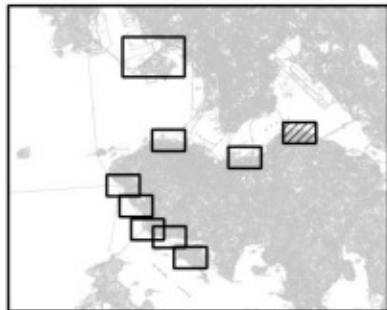


Annex G

## Baseline Landscape and Visual Monitoring Results



LOCATION PLAN  
SCALE 1:60000

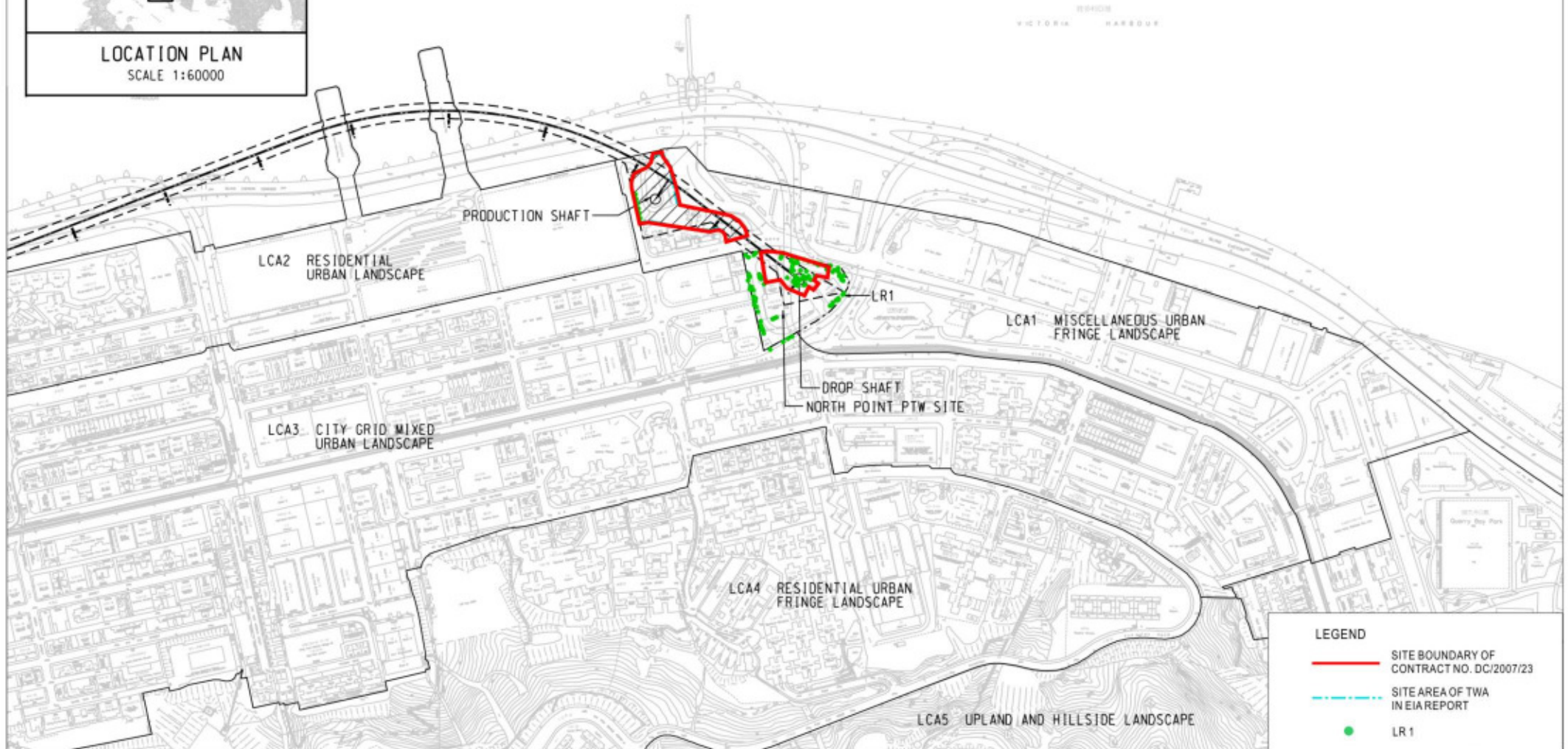


Figure 4.1

Contract No. DC/2007/23  
Harbour Area Treatment Scheme Stage 2A  
Construction of Sewage Conveyance System from North Point to Stonecutters Island  
Baseline Landscape Monitoring Locations in North Point

FILE: 0104887-HATS-LandIB-4.1-LRLCALocation-NP  
DATE: 02/11/2009

Environmental  
Resources  
Management



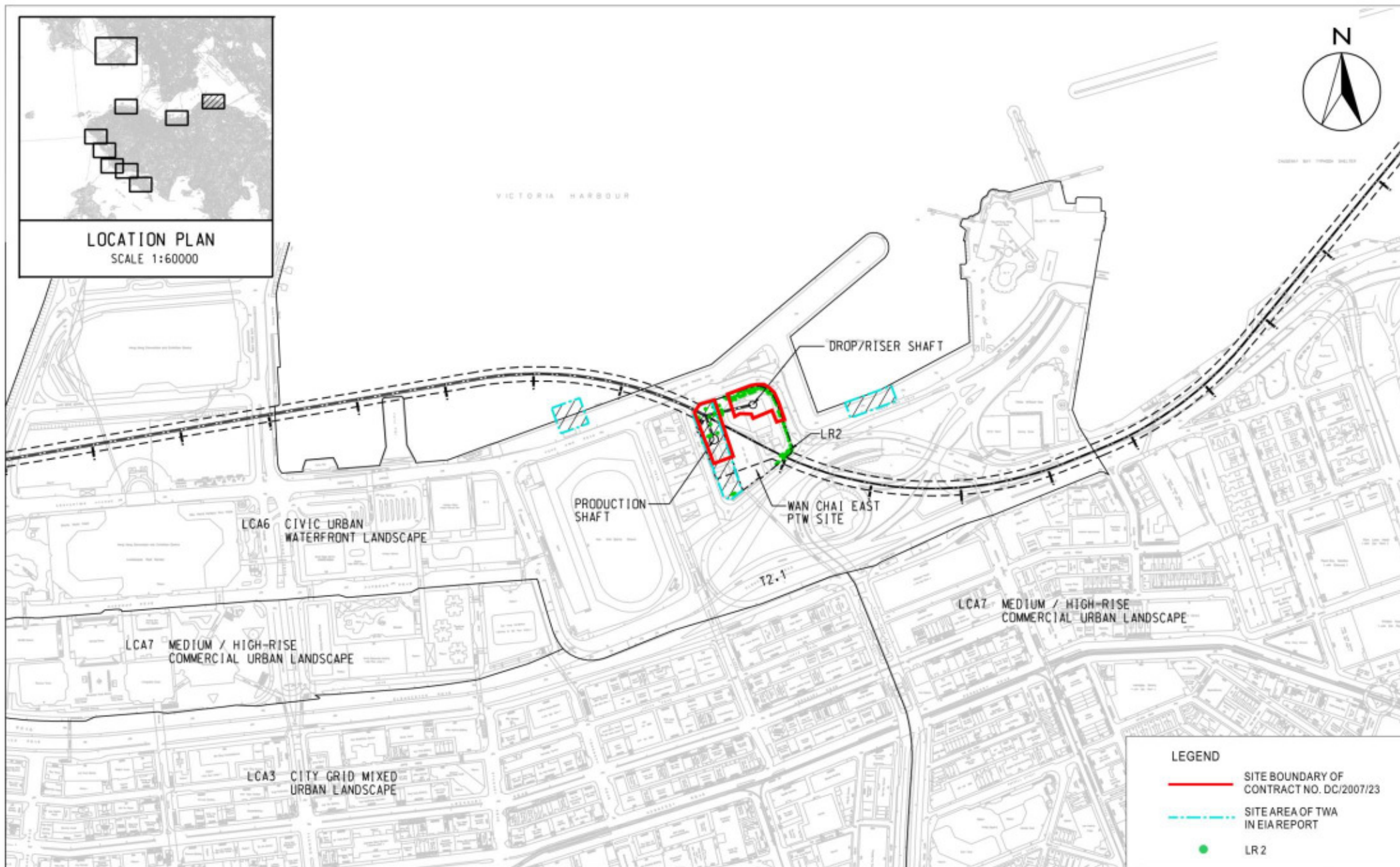


Figure 4.2

Contract No. DC/2007/23  
 Harbour Area Treatment Scheme Stage 2A  
 Construction of Sewage Conveyance System from North Point to Stonecutters Island  
 Baseline Landscape Monitoring Locations in Wan Chai East

FILE: 0104887-HATS-LandIB-4.2-LRLCALocation-WCE  
 DATE: 02/11/2009

Environmental  
 Resources  
 Management





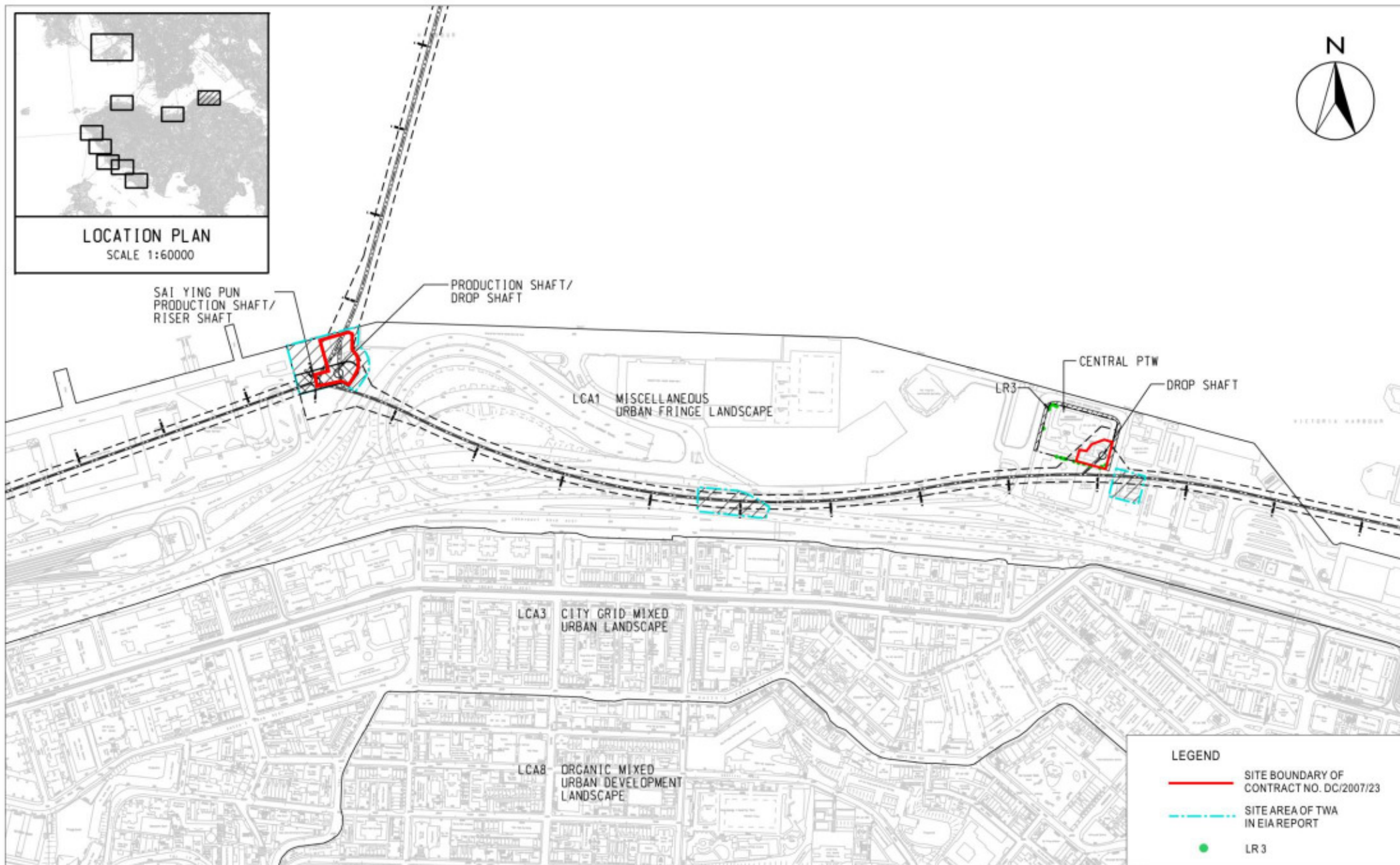


Figure 4.3

Contract No. DC/2007/23  
Harbour Area Treatment Scheme Stage 2A  
Construction of Sewage Conveyance System from North Point to Stonecutters Island  
Baseline Landscape Monitoring Locations in Central & Sai Ying Pun

FILE: 0104887-HATS-LandIB-4.3-LRLCALocation-C  
DATE: 02/11/2009

Environmental  
Resources  
Management



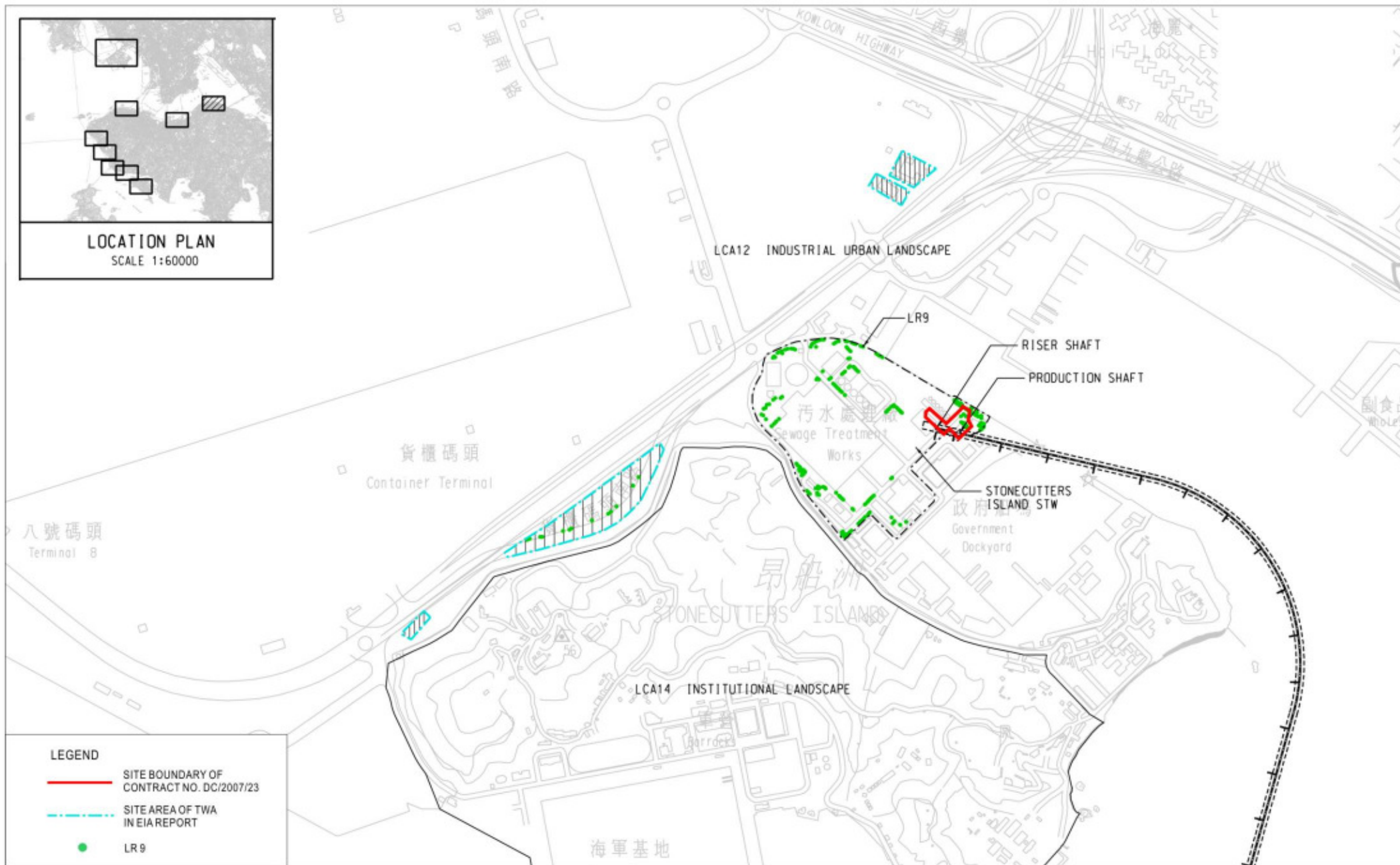


Figure 4.4

Contract No. DC/2007/23  
 Harbour Area Treatment Scheme Stage 2A  
 Construction of Sewage Conveyance System from North Point to Stonecutters Island  
 Baseline Landscape Monitoring Locations in Stonecutters Island

Environmental  
 Resources  
 Management







LCA1 – Miscellaneous Urban Fringe Landscape



LCA2 –Civic Urban Waterfront Landscape



LCA3 – Transportation Corridor Landscape



LCA4 – Residential Urban Landscape



LCA5 – Industrial Urban Landscape

Landscape Character Area (LCA)  
LCA1 – Miscellaneous Urban Fringe Landscape  
LCA2 –Civic Urban Waterfront Landscape  
LCA3 – Transportation Corridor Landscape  
LCA4 – Residential Urban Landscape  
LCA5 – Industrial Urban Landscape

Figure 4.5

Contract No. DC/2007/23  
Harbour Area Treatment Scheme Stage 2A  
Construction of Sewage Conveyance System from North Point to Stonecutters Island  
Baseline Landscape Monitoring - Existing Landscape Character Areas (LCAs)

FILE: 0104887-HATS-LandIB-4.5-LCA  
DATE: 02/11/2009

Environmental  
Resources  
Management





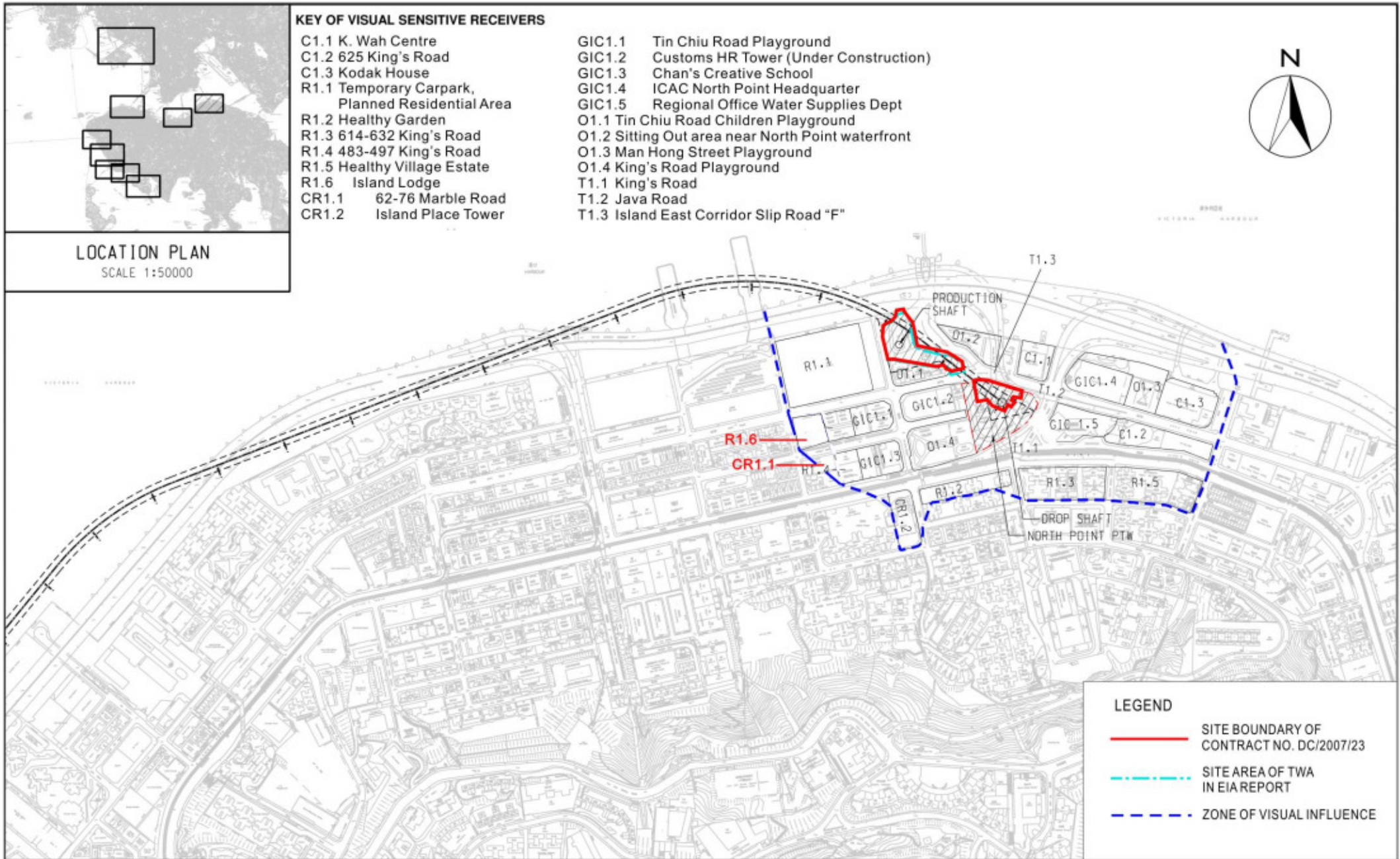


Figure 4.6

Contract No. DC/2007/23  
Harbour Area Treatment Scheme Stage 2A  
Construction of Sewage Conveyance System from North Point to Stonecutters Island  
Baseline Visual Monitoring Locations in North Point

FILE: 0104887-HATS-VisualB-4.6-VSRLocation-NP  
DATE: 02/11/2009

**Environmental  
Resources  
Management**



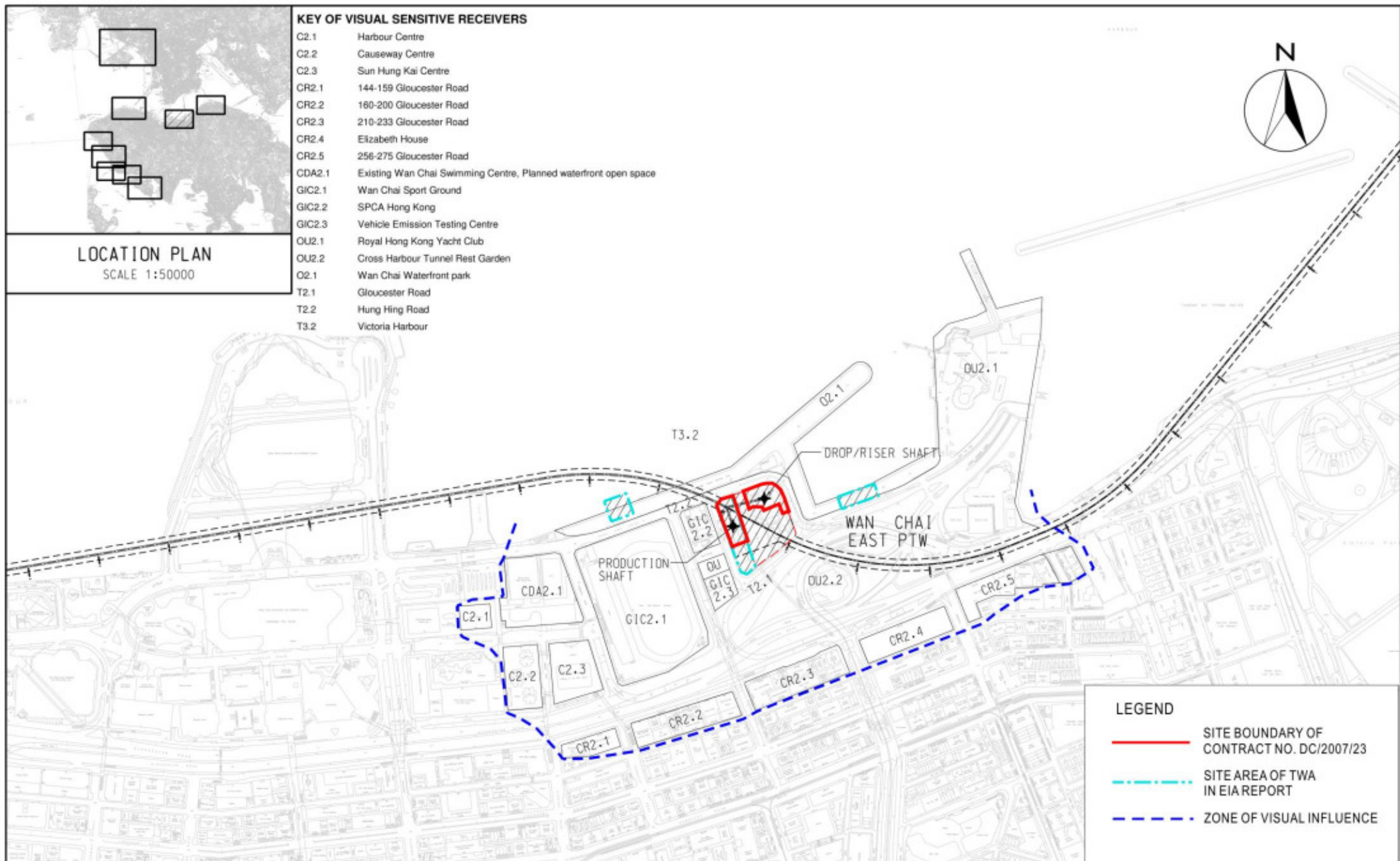


Figure 4.7

Contract No. DC/2007/23  
Harbour Area Treatment Scheme Stage 2A  
Construction of Sewage Conveyance System from North Point to Stonecutters Island  
Baseline Visual Monitoring Locations in Wan Chai East

FILE: 0104887-HATS-VisualB-4.7-VSRLocation-WCE  
DATE: 02/11/2009

Environmental  
Resources  
Management





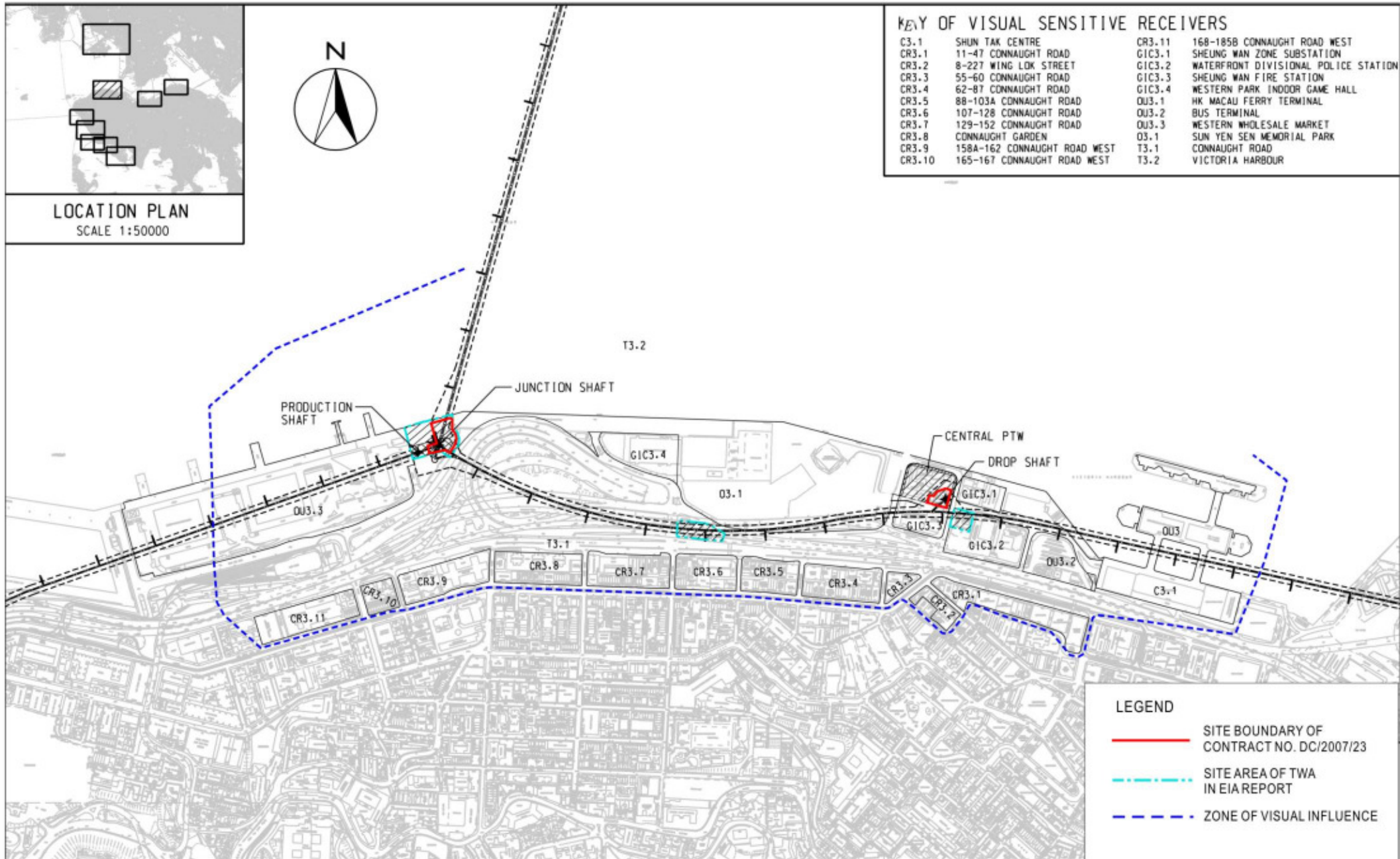


Figure 4.8

Contract No. DC/2007/23  
 Harbour Area Treatment Scheme Stage 2A  
 Construction of Sewage Conveyance System from North Point to Stonecutters Island  
 Baseline Visual Monitoring Locations in Central & Sai Ying Pun

FILE: 0104887-HATS-VisualB-4.8-VSRLocation-C  
 DATE: 02/11/2009

Environmental  
 Resources  
 Management



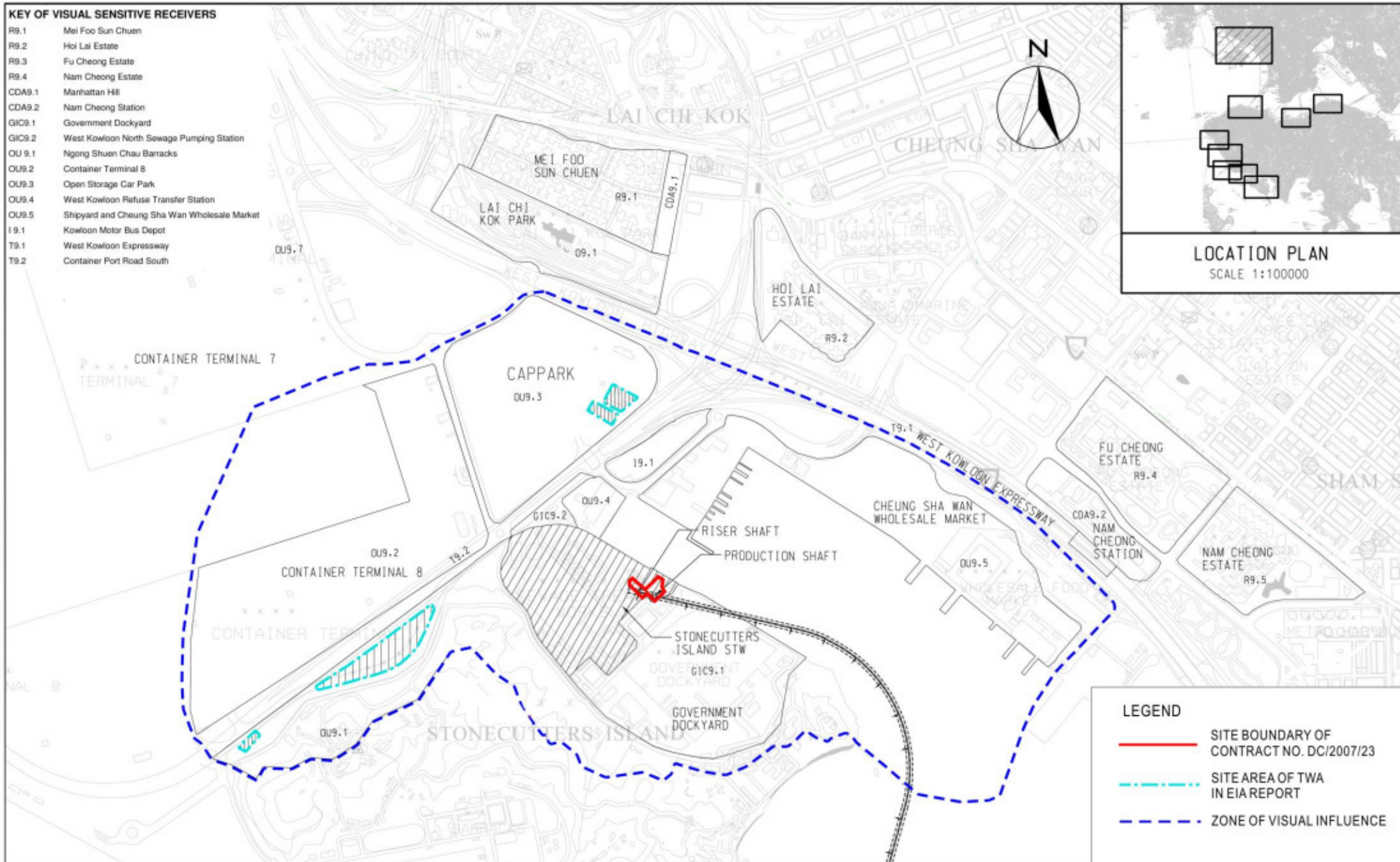


Figure 4.9

Contract No. DC/2007/23  
 Harbour Area Treatment Scheme Stage 2A  
 Construction of Sewage Conveyance System from North Point to Stonecutters Island  
 Baseline Visual Monitoring Locations in Stonecutters Island

Environmental  
 Resources  
 Management







C1.1, C1.2, C1.3, R1.2, R1.3, R1.5, GIC1.4

Photo from EIA Report



Photo from Baseline Site Visit



R1.1, D1.1

Photo from EIA Report



Photo from Baseline Site Visit

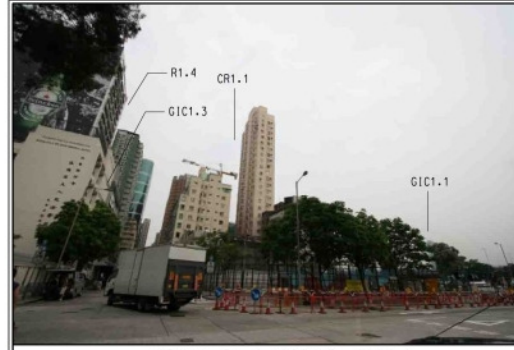


C1.2, R1.3, R1.5, GIC1.5

Photo from EIA Report



Photo from Baseline Site Visit



CR1.1, R1.4, GIC1.3, GIC1.1

Photo from EIA Report



Photo from Baseline Site Visit



Photo from EIA Report



Photo from Baseline Site Visit



Photo from EIA Report



Photo from Baseline Site Visit

Figure 4.10

Contract No. DC/2007/23  
 Harbour Area Treatment Scheme Stage 2A  
 Construction of Sewage Conveyance System from North Point to Stonecutters Island  
 Baseline Visual Monitoring Locations and Results in North Point

FILE: 0104887-HATS-VisualB-4.10-results-NP-001  
 DATE: 02/11/2009

Environmental  
 Resources  
 Management







01.4 KING'S ROAD PLAYGROUND

Photo from EIA Report



Photo from Baseline Site Visit



T1.1 KING'S ROAD

Photo from EIA Report



Photo from Baseline Site Visit



T1.2 JAVA ROAD

Photo from EIA Report



Photo from Baseline Site Visit



T1.3 ISLAND EAST CORRIDOR

Photo from EIA Report



Photo from Baseline Site Visit



01.2 SITTING OUT AREA NEAR NORTH POINT WATERFRONT

Photo from EIA Report



Photo from Baseline Site Visit

Figure 4.11

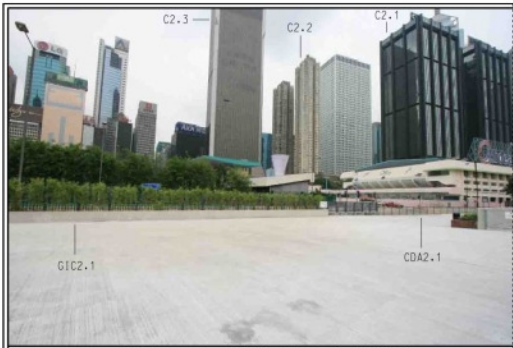
Contract No. DC/2007/23  
 Harbour Area Treatment Scheme Stage 2A  
 Construction of Sewage Conveyance System from North Point to Stonecutters Island  
 Baseline Visual Monitoring Locations and Results in North Point

FILE: 0104887-HATS-VisualB-4.11-results-NP-002  
 DATE: 02/11/2009

Environmental  
 Resources  
 Management





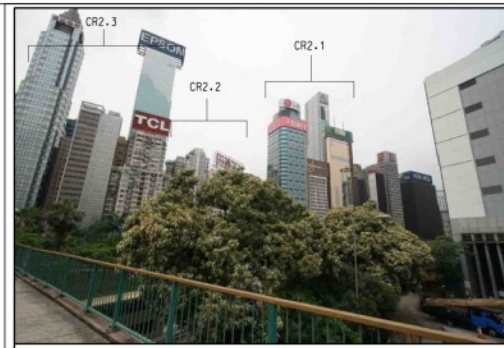


C2.1, C2.2, C2.3, CDA2.1, GIC2.1

Photo from EIA Report



Photo from Baseline Site Visit

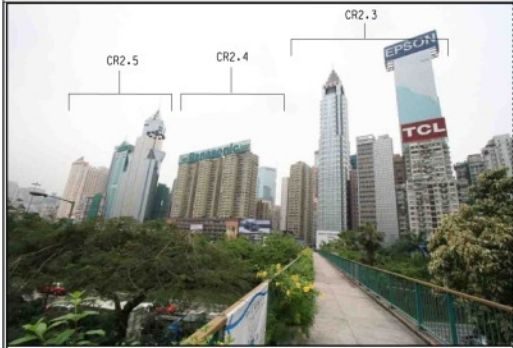


CR2.1, CR2.2, CR2.3

Photo from EIA Report



Photo from Baseline Site Visit



CR2.3, CR2.4, CR2.5

Photo from EIA Report



Photo from Baseline Site Visit



GIC2.2

Photo from EIA Report



Photo from Baseline Site Visit



GIC2.3

Photo from EIA Report



Photo from Baseline Site Visit



OU2.1

Photo from EIA Report



Photo from Baseline Site Visit

Figure 4.12

Contract No. DC/2007/23  
 Harbour Area Treatment Scheme Stage 2A  
 Construction of Sewage Conveyance System from North Point to Stonecutters Island  
 Baseline Visual Monitoring Locations and Results in Wan Chai East

FILE: 0104887-HATS-VisualB-4.12-results-WCE-001  
 DATE: 02/11/2009

Environmental  
 Resources  
 Management







OU2.2

Photo from EIA Report



Photo from Baseline Site Visit



02.1

Photo from EIA Report



Photo from Baseline Site Visit



T2.1

Photo from EIA Report



Photo from Baseline Site Visit



T2.2

Photo from EIA Report



Photo from Baseline Site Visit



T3.2

Photo from EIA Report



Photo from Baseline Site Visit

Figure 4.13

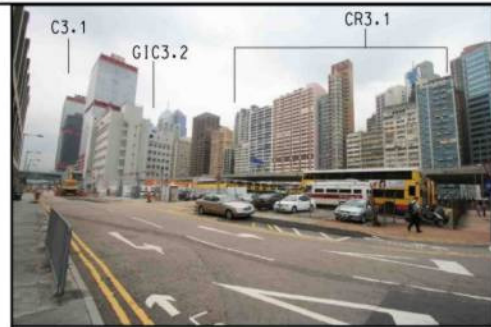
Contract No. DC/2007/23  
 Harbour Area Treatment Scheme Stage 2A  
 Construction of Sewage Conveyance System from North Point to Stonecutters Island  
 Baseline Visual Monitoring Locations and Results in Wan Chai East

FILE: 0104887-HATS-VisualB-4.13-results-WCE-002  
 DATE: 02/11/2009

Environmental  
 Resources  
 Management





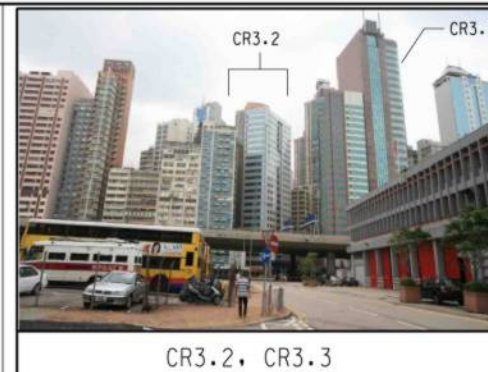


C3.1, GIC3.2, CR3.1

Photo from EIA Report



Photo from Baseline Site Visit

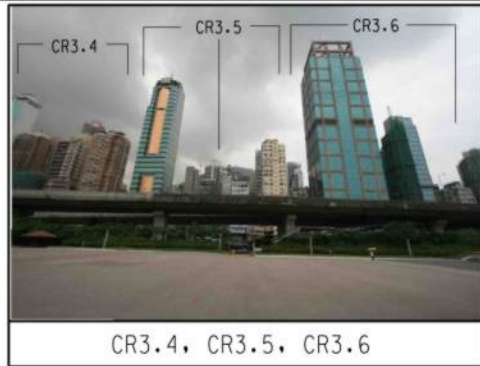


CR3.2, CR3.3

Photo from EIA Report



Photo from Baseline Site Visit

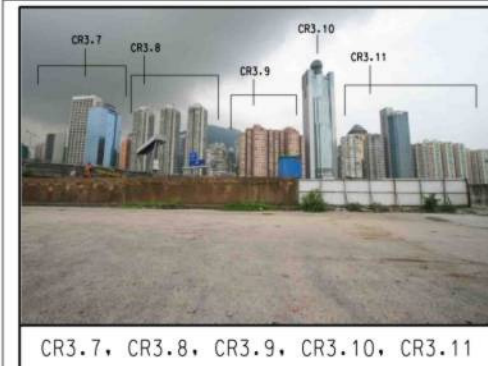


CR3.4, CR3.5, CR3.6

Photo from EIA Report



Photo from Baseline Site Visit



CR3.7, CR3.8, CR3.9, CR3.10, CR3.11

Photo from EIA Report



Photo from Baseline Site Visit



GIC3.1

Photo from EIA Report



Photo from Baseline Site Visit



GIC3.3

Photo from EIA Report



Photo from Baseline Site Visit

Figure 4.14

Contract No. DC/2007/23  
 Harbour Area Treatment Scheme Stage 2A  
 Construction of Sewage Conveyance System from North Point to Stonecutters Island  
 Baseline Visual Monitoring Locations and Results in Central & Sai Ying Pun

FILE: 0104887-HATS-VisualB-4.14-results-C-001  
 DATE: 02/11/2009

Environmental  
 Resources  
 Management







GIC3.4

Photo from EIA Report



Photo from Baseline Site Visit



O3.1

Photo from EIA Report



Photo from Baseline Site Visit



T3.1

Photo from EIA Report



Photo from Baseline Site Visit



T3.2

Photo from EIA Report



T3.2

Photo from Baseline Site Visit



OU3.3

Photo from EIA Report



Photo from Baseline Site Visit

Figure 4.15

Contract No. DC/2007/23  
 Harbour Area Treatment Scheme Stage 2A  
 Construction of Sewage Conveyance System from North Point to Stonecutters Island  
 Baseline Visual Monitoring Locations and Results in Central & Sai Ying Pun

FILE: 0104887-HATS-VisualB-4.15-results-C-002  
 DATE: 02/11/2009

Environmental  
 Resources  
 Management







R9.1 MEI FOO SUN CHUEN

Photo from EIA Report



Photo from Baseline Site Visit



R9.2 HOI LAI ESTATE

Photo from EIA Report



Photo from Baseline Site Visit



R9.3 FU CHEONG ESTATE  
R9.4 NAM CHEONG ESTATE

Photo from EIA Report



Photo from Baseline Site Visit



G1C9.1 GOVERNMENT DOCKYARD

Photo from EIA Report



Photo from Baseline Site Visit



G1C9.2 WEST KOWLOON NORTH  
SEWAGE PUMPING STATION

Photo from EIA Report



Photo from Baseline Site Visit



OU9.1 NGONG SHUEN CHAU BARRACKS

Photo from EIA Report



Photo from Baseline Site Visit

Figure 4.16

Contract No. DC/2007/23  
Harbour Area Treatment Scheme Stage 2A  
Construction of Sewage Conveyance System from North Point to Stonecutters Island  
Baseline Visual Monitoring Locations and Results in Stonecutters Island

FILE: 0104887-HATS-VisualB-4.16results-SI-001  
DATE: 02/11/2009

Environmental  
Resources  
Management





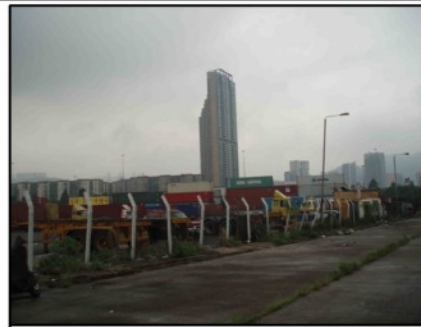


OU9.2 CONTAINER TERMINAL 8

Photo from EIA Report



Photo from Baseline Site Visit



OU9.3 OPEN STORAGE CAR PARK

Photo from EIA Report



Photo from Baseline Site Visit



OU9.4 WEST KOWLOON REFUSE TRANSFER STATION

Photo from EIA Report



Photo from Baseline Site Visit



OU9.5

Photo from EIA Report



Photo from Baseline Site Visit

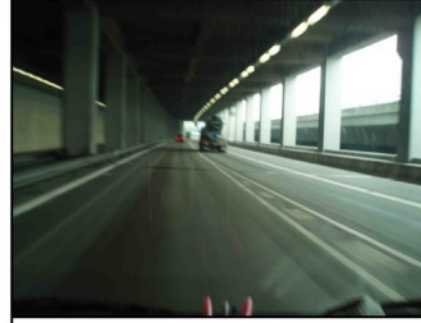


T9.1

Photo from EIA Report



Photo from Baseline Site Visit



T9.1

Photo from EIA Report



Photo from Baseline Site Visit

Figure 4.17

Contract No. DC/2007/23  
 Harbour Area Treatment Scheme Stage 2A  
 Construction of Sewage Conveyance System from North Point to Stonecutters Island  
 Baseline Visual Monitoring Locations and Results in Stonecutters Island

FILE: 0104887-HATS-VisualB-4.17-results-SI-002  
 DATE: 02/11/2009

Environmental  
 Resources  
 Management







Photo from EIA Report



Photo from EIA Report



Photo from EIA Report



Figure 4.18

Contract No. DC/2007/23  
 Harbour Area Treatment Scheme Stage 2A  
 Construction of Sewage Conveyance System from North Point to Stonecutters Island  
 Baseline Visual Monitoring Locations and Results in Stonecutters Island

FILE: 0104887-HATS-VisualB-4.18-results-SI-003  
 DATE: 02/11/2009

Environmental  
 Resources  
 Management

