

Annex D

## Baseline 24-hr and 1-hr TSP Monitoring Results

### Baseline 24-hr TSP Monitoring Results

Station : AM1 (Chan's Creative School)

Date	Filter Identification No.	Filter Weight (g)		Flow Rate (m <sup>3</sup> /min.)		Elapse Time		Sampling Time(hrs.)	Conc. (µg/m <sup>3</sup> )	Weather Condition	Ave. Air Temp. (°C)	Atmospheric Pressure(hPa)	Particulate weight(g)	Av. flow (m <sup>3</sup> /min)	Total vol. (m <sup>3</sup> )
		Initial	Final	Initial	Final	Initial	Final								
29/09/2009	9684	2.7933	2.9095	1.35	1.35	9394.01	9418.01	24.0	60	Rainy	26.0	1002	0.12	1.35	1944.0
30/09/2009	9688	2.7961	2.9085	1.35	1.35	9418.01	9442.01	24.0	58	Rainy	27.0	1002	0.11	1.35	1944.0
2/10/2009	9316	2.7891	2.9339	1.35	1.35	9442.01	9466.01	24.0	74	Sunny	29.0	1014	0.14	1.35	1944.0
5/10/2009	0066	2.8390	3.0212	1.35	1.35	9466.01	9490.01	24.0	94	Sunny	28.0	1012	0.18	1.35	1944.0
6/10/2009	0070	2.8177	2.9910	1.35	1.35	9490.01	9514.01	24.0	89	Sunny	29.5	1013	0.17	1.35	1944.0
7/10/2009	0075	2.8208	3.0151	1.35	1.35	9514.01	9538.01	24.0	100	Sunny	29.5	1011	0.19	1.35	1944.0
8/10/2009	0079	2.8280	3.0304	1.35	1.35	9538.01	9562.01	24.0	104	Fine	29.0	1010	0.20	1.35	1944.0
9/10/2009	9769	2.7967	3.0084	1.35	1.35	9562.01	9586.01	24.0	109	Sunny	29.0	1011	0.21	1.35	1944.0
10/10/2009	9757	2.7900	2.9812	1.35	1.35	9586.01	9610.01	24.0	98	Sunny	27.0	1012	0.19	1.35	1944.0
12/10/2009	9756	2.7875	2.9671	1.35	1.35	9610.01	9634.01	24.0	92	Cloudy	26.0	1008	0.18	1.35	1944.0
13/10/2009	9669	2.7904	2.9468	1.35	1.35	9634.01	9658.01	24.0	80	Sunny	25.5	1012	0.16	1.35	1944.0
14/10/2009	9742	2.8019	2.9398	1.35	1.35	9658.01	9682.01	24.0	71	Sunny	27.0	1009	0.14	1.35	1944.0
15/10/2009	9778	2.8011	2.9456	1.35	1.35	9682.01	9706.01	24.0	74	Sunny	26.0	1011	0.14	1.35	1944.0
16/10/2009	9735	2.7825	2.9559	1.35	1.35	9706.01	9730.01	24.0	89	Sunny	26.5	1010	0.17	1.35	1944.0

Action Level 185 ug/m3

Min	58
Max	109
Average	85

Station : AM2 (Hong Kong & Island Regional office, WSD)

Date	Filter Identification No.	Filter Weight (g)		Flow Rate (m <sup>3</sup> /min.)		Elapse Time		Sampling Time(hrs.)	Conc. (µg/m <sup>3</sup> )	Weather Condition	Ave. Air Temp. (°C)	Atmospheric Pressure(hPa)	Particulate weight(g)	Av. flow (m <sup>3</sup> /min)	Total vol. (m <sup>3</sup> )
		Initial	Final	Initial	Final	Initial	Final								
29/9/2009	9615	2.8248	2.9411	1.29	1.29	10240.88	10264.88	24.0	63	Rainy	26.0	1002	0.12	1.29	1857.6
30/9/2009	9318	2.7875	2.9011	1.29	1.29	10264.88	10264.88	24.0	61	Rainy	27.0	1002	0.11	1.29	1857.6
1/10/2009	0061	2.8360	2.9440	1.29	1.29	10288.88	10288.88	24.0	58	Sunny	27.5	1012	0.11	1.29	1857.6
2/10/2009	9673	2.7878	2.9117	1.29	1.29	10312.88	10336.88	24.0	67	Sunny	28.5	1014	0.12	1.29	1857.6
3/10/2009	9793	2.7880	2.9464	1.29	1.29	10376.88	10360.88	24.0	85	Fine	27.5	1010	0.16	1.29	1857.6
4/10/2009	9789	2.7824	2.9501	1.29	1.29	10360.88	10384.88	24.0	90	Sunny	27.0	1014	0.17	1.29	1857.6
5/10/2009	9787	2.7850	2.9467	1.29	1.29	10384.88	10408.88	24.0	87	Sunny	26.5	1012	0.16	1.29	1857.6
6/10/2009	9783	2.7950	2.9876	1.29	1.29	10408.88	10432.88	24.0	104	Sunny	26.0	1013	0.19	1.29	1857.6
7/10/2009	9778	2.7967	2.9771	1.29	1.29	10432.88	10456.88	24.0	97	Sunny	26.5	1011	0.18	1.29	1857.6
8/10/2009	9774	2.7849	2.9315	1.29	1.29	10456.88	10480.88	24.0	79	Fine	27.0	1010	0.15	1.29	1857.6
9/10/2009	9766	2.7935	2.9286	1.29	1.29	10480.88	10504.88	24.0	73	Sunny	26.5	1011	0.14	1.29	1857.6
10/10/2009	9758	2.7849	2.9399	1.29	1.29	10504.88	10528.88	24.0	83	Sunny	25.5	1012	0.16	1.29	1867.6
11/10/2009	9752	2.7866	2.9264	1.29	1.29	10528.88	10552.88	24.0	75	Cloudy	24.5	1010	0.14	1.29	1857.6
12/10/2009	9745	2.7955	2.9673	1.29	1.29	10552.88	10576.88	24.0	93	Cloudy	25.0	1008	0.17	1.29	1857.6

Action Level 182 ug/m3

Min	58
Max	104
Average	80

### Baseline 24-hr TSP Monitoring Results

Station : AM3 (Wan Chai East PTW)

Date	Filter Identification No.	Filter Weight (g)		Flow Rate (m <sup>3</sup> /min.)		Elapse Time		Sampling Time(hrs.)	Conc. (µg/m <sup>3</sup> )	Weather Condition	Ave. Air Temp. (°C)	Atmospheric Pressure(hPa)	Particulate weight(g)	Av. flow (m <sup>3</sup> /min)	Total vol. (m <sup>3</sup> )
		Initial	Final	Initial	Final	Initial	Final								
29/9/2009	9628	2.7904	2.9001	1.35	1.35	1859.32	1883.32	24.0	56	Rainy	26.0	1002	0.12	1.35	1944.0
30/9/2009	9630	2.7915	2.9245	1.35	1.35	1883.32	1907.32	24.0	68	Rainy	27.0	1002	0.13	1.35	1944.0
1/10/2009	9637	2.7933	2.9315	1.35	1.35	1907.32	1931.32	24.0	71	Sunny	27.5	1012	0.14	1.35	1944.0
2/10/2009	9648	2.7944	2.9471	1.35	1.35	1931.32	1955.32	24.0	79	Sunny	29.0	1014	0.15	1.35	1944.0
3/10/2009	9660	2.7850	2.9421	1.35	1.35	1955.32	1979.32	24.0	81	Fine	28.0	1010	0.16	1.35	1944.0
4/10/2009	9600	2.8006	2.9456	1.35	1.35	1979.32	2003.32	24.0	75	Sunny	27.5	1014	0.15	1.35	1944.0
5/10/2009	9604	2.7964	2.9511	1.35	1.35	2003.32	2027.32	24.0	80	Sunny	28.0	1012	0.15	1.35	1944.0
6/10/2009	9611	2.7987	2.9503	1.35	1.35	2027.32	2051.32	24.0	78	Sunny	29.5	1013	0.15	1.35	1944.0
7/10/2009	9621	2.7959	2.9776	1.35	1.35	2051.32	2075.32	24.0	93	Sunny	29.5	1011	0.18	1.35	1944.0
8/10/2009	9642	2.7980	2.9578	1.35	1.35	2075.32	2099.32	24.0	82	Fine	29.0	1010	0.16	1.35	1944.0
9/10/2009	9675	2.7924	2.9661	1.35	1.35	2099.32	2123.32	24.0	89	Sunny	29.0	1011	0.17	1.35	1944.0
10/10/2009	9682	2.7967	2.9498	1.35	1.35	2123.32	2147.32	24.0	79	Sunny	27.0	1012	0.15	1.35	1944.0
11/10/2009	9693	2.8303	2.9779	1.35	1.35	2147.32	2171.32	24.0	76	Cloudy	24.5	1010	0.15	1.35	1944.0
12/10/2009	9697	2.8726	3.0334	1.35	1.35	2171.32	2195.32	24.0	83	Cloudy	26.0	1008	0.16	1.35	1944.0

Action Level 181 ug/m3

Min	56
Max	93
Average	78

Station : AM4 (A Location within the DSD Central PTW)

Date	Filter Identification No.	Filter Weight (g)		Flow Rate (m <sup>3</sup> /min.)		Elapse Time		Sampling Time(hrs.)	Conc. (µg/m <sup>3</sup> )	Weather Condition	Ave. Air Temp. (°C)	Atmospheric Pressure(hPa)	Particulate weight(g)	Av. flow (m <sup>3</sup> /min)	Total vol. (m <sup>3</sup> )
		Initial	Final	Initial	Final	Initial	Final								
09/10/2009	0100	2.8393	3.1499	1.32	1.32	16275.84	16299.84	24.0	163	Sunny	26.0	1012	0.31	1.32	1900.8
10/10/2009	0084	2.8333	3.1965	1.32	1.32	16299.84	16323.84	24.0	191	Sunny	26.0	1010	0.36	1.32	1900.8
11/10/2009	0088	2.7864	2.9380	1.32	1.32	16323.84	16347.84	24.0	80	Cloudy	24.0	1000	0.15	1.32	1900.8
12/10/2009	0098	2.8704	3.0734	1.32	1.32	16347.84	16371.84	24.0	107	Rainy	26.0	1012	0.20	1.32	1900.8
13/10/2009	0095	2.8082	2.9577	1.32	1.32	16371.84	16395.84	24.0	79	Sunny	25.0	1009	0.15	1.32	1900.8
14/10/2009	0092	2.8439	3.0346	1.32	1.32	16395.84	16419.84	24.0	100	Cloudy	26.0	1011	0.19	1.32	1900.8
15/10/2009	0155	2.8644	3.0972	1.32	1.32	16419.84	16443.84	24.0	122	Fine	25.0	1010	0.23	1.32	1900.8
16/10/2009	0159	2.8532	3.0877	1.32	1.32	16443.84	16467.84	24.0	123	Fine	25.0	1012	0.23	1.32	1900.8
17/10/2009	0167	2.8582	3.1220	1.32	1.32	16467.84	16491.84	24.0	139	Sunny	25.0	1012	0.26	1.32	1900.8
18/10/2009	0171	2.9099	3.2104	1.32	1.32	16491.84	16515.84	24.0	158	Sunny	24.0	1012	0.30	1.32	1900.8
19/10/2009	0161	2.8352	3.0381	1.32	1.32	16515.84	16539.84	24.0	107	Cloudy	25.0	1009	0.20	1.32	1900.8
20/10/2009	0174	2.9014	3.2118	1.32	1.32	16539.84	16563.84	24.0	163	Cloudy	24.0	1010	0.31	1.32	1900.8
21/10/2009	0178	2.8928	3.0055	1.32	1.32	16563.84	16587.84	24.0	59	Cloudy	25.0	1015	0.11	1.32	1900.8
22/10/2009	0181	2.8809	3.1603	1.32	1.32	16507.04	16611.84	24.0	147	Sunny	26.0	1015	0.28	1.32	1900.8

Action Level 211 ug/m3

Min	59
Max	191
Average	124

**Baseline 24-hr TSP Monitoring Results**

Station : **AM5** (AFCD Western Wholesale Food Market)

Date	Filter Identification No.	Filter Weight (g)		Flow Rate (m <sup>3</sup> /min.)		Elapse Time		Sampling Time(hrs.)	Conc. (µg/m <sup>3</sup> )	Weather Condition	Ave. Air Temp. (°C)	Atmospheric Pressure(hPa)	Particulate weight(g)	Av. flow (m <sup>3</sup> /min)	Total vol. (m <sup>3</sup> )
		Initial	Final	Initial	Final	Initial	Final								
25/09/2009	0001	2.8167	2.9385	1.37	1.37	10182.18	10206.18	24.0	62	Sunny	29.0	1012	0.12	1.37	1972.8
26/09/2009	0008	2.8554	3.0300	1.37	1.37	10206.18	10230.18	24.0	89	Sunny	29.5	1012	0.17	1.37	1972.8
27/09/2009	0012	2.7868	2.9882	1.37	1.37	10230.18	10254.18	24.0	102	Sunny	29.0	1010	0.20	1.37	1972.8
28/09/2009	0017	2.8277	2.9915	1.37	1.37	10254.18	10278.18	24.0	83	Rainy	26.5	1012	0.16	1.37	1972.8
29/09/2009	0056	2.8186	2.9177	1.37	1.37	10278.18	10302.18	24.0	50	Rainy	26.0	1002	0.10	1.37	1972.8
30/09/2009	0020	2.7991	2.9042	1.37	1.37	10302.18	10326.18	24.0	53	Rainy	27.0	1002	0.11	1.37	1972.8
01/10/2009	0027	2.7968	2.9344	1.37	1.37	10326.18	10350.18	24.0	70	Sunny	28.0	1012	0.14	1.37	1972.8
02/10/2009	0031	2.8079	2.9494	1.37	1.37	10350.18	10374.18	24.0	72	Sunny	28.0	1014	0.14	1.37	1972.8
03/10/2009	0035	2.7746	2.9458	1.37	1.37	10374.18	10398.18	24.0	87	Fine	28.0	1010	0.17	1.37	1972.8
04/10/2009	0039	2.8087	3.0994	1.37	1.37	10398.18	10422.18	24.0	147	Sunny	27.0	1014	0.29	1.37	1972.8
05/10/2009	0043	2.8222	3.0853	1.37	1.37	10422.18	10446.18	24.0	133	Sunny	27.0	1012	0.26	1.37	1972.8
06/10/2009	0047	2.7978	2.9862	1.37	1.37	10446.18	10470.18	24.0	95	Sunny	26.0	1013	0.19	1.37	1972.8
07/10/2009	0051	2.8018	3.0085	1.37	1.37	10470.18	10494.18	24.0	105	Sunny	27.0	1011	0.21	1.37	1972.8
08/10/2009	0055	2.8122	3.0193	1.37	1.37	10494.18	10518.18	24.0	105	Fine	27.0	1010	0.21	1.37	1972.8

Action Level **188 ug/m3**

Min	50
Max	147
Average	90

Station : **AM6** (Works Site Boundary - Stonecutters Island Sewage Treatment Works)

Date	Filter Identification No.	Filter Weight (g)		Flow Rate (m <sup>3</sup> /min.)		Elapse Time		Sampling Time(hrs.)	Conc. (µg/m <sup>3</sup> )	Weather Condition	Ave. Air Temp. (°C)	Atmospheric Pressure(hPa)	Particulate weight(g)	Av. flow (m <sup>3</sup> /min)	Total vol. (m <sup>3</sup> )
		Initial	Final	Initial	Final	Initial	Final								
09/10/2009	0102	2.8802	3.1067	1.30	1.30	5166.37	5190.37	24.0	121	Sunny	28.0	1011	0.23	1.30	1872.0
10/10/2009	0108	2.8560	2.9604	1.30	1.30	5190.37	5214.37	24.0	56	Sunny	27.0	1010	0.10	1.30	1872.0
12/10/2009	0111	2.9020	3.1006	1.30	1.30	5214.37	5238.37	24.0	106	Sunny	25.0	1011	0.20	1.30	1872.0
13/10/2009	0116	2.8868	3.0145	1.30	1.30	5238.37	5262.37	24.0	68	Sunny	26.0	1011	0.13	1.30	1872.0
14/10/2009	0120	2.8914	3.0755	1.30	1.30	5262.37	5286.37	24.0	98	Cloudy	26.0	1010	0.18	1.30	1872.0
15/10/2009	0124	2.8817	3.1364	1.30	1.30	5286.37	5310.37	24.0	136	Sunny	27.0	1010	0.25	1.30	1872.0
16/10/2009	0128	2.8623	3.6817	1.30	1.30	5310.37	5334.37	24.0	438	Sunny	27.0	1011	0.82	1.30	1872.0
17/10/2009	0132	2.8812	3.1778	1.30	1.30	5334.37	5358.37	24.0	158	Sunny	26.0	1012	0.30	1.30	1872.0
18/10/2009	0136	2.8034	3.0415	1.30	1.30	5358.37	5382.37	24.0	127	Sunny	26.0	1012	0.24	1.30	1872.0
19/10/2009	0140	2.9030	3.2287	1.30	1.30	5382.37	5406.37	24.0	174	Cloudy	26.0	1011	0.33	1.30	1872.0
20/10/2009	0144	2.8993	3.3863	1.30	1.30	5406.37	5430.37	24.0	260	Cloudy	26.0	1010	0.49	1.30	1872.0
21/10/2009	0148	2.8707	3.2211	1.30	1.30	5430.37	5454.37	24.0	187	Cloudy	26.0	1013	0.35	1.30	1872.0
22/10/2009	0059	2.7644	2.9572	1.30	1.30	5454.37	5478.37	24.0	103	Fine	27.0	1015	0.19	1.30	1872.0
23/10/2009	0203	2.8048	3.1943	1.30	1.30	5478.37	5502.37	24.0	208	Sunny	27.0	1015	0.39	1.30	1872.0

Action Level <sup>(a)</sup> **196 ug/m3**

Min	56
Max	438
Average	160

Notes:

- (a) Action Level is determined based on the average 24-hr TSP measured at at AM6 and the baseline monitoring data obtained from the Construction of Disinfection Facilities Project in HATS Stage 2A

**Baseline 1-hr TSP Monitoring Results**

Station : AMI (Chan's Creative School)

Date	Filter Identification No.	Filter Weight (g)		Flow Rate (m <sup>3</sup> /min.)		Elapse Time		Sampling Time(hrs.)	Conc. (µg/m <sup>3</sup> )	Weather Condition	Ave. Air Temp. (°C)	Atmospheric Pressure(hPa)	Particulate weight(g)	Av. flow (m <sup>3</sup> /min)	Total vol. (m <sup>3</sup> )
		Initial	Final	Initial	Final	Initial	Final								
29/09/09	9685	2.7997	2.8065	1.37	1.37	13388.35	13389.35	1	83	Rainy	25.0	1002	0.01	1.37	82.2
29/09/09	9686	2.7944	2.8007	1.37	1.37	13389.50	13390.35	1	77	Rainy	25.0	1002	0.01	1.37	82.2
29/09/09	9687	2.7982	2.8060	1.37	1.37	13390.35	13391.35	1	95	Rainy	25.0	1002	0.01	1.37	82.2
30/09/09	9689	2.7924	2.7997	1.37	1.37	13391.35	13392.35	1	89	Rainy	27.0	1002	0.01	1.37	82.2
30/09/09	9690	2.7906	2.7978	1.37	1.37	13392.35	13393.35	1	88	Rainy	27.0	1002	0.01	1.37	82.2
30/09/09	9691	2.7929	2.8004	1.37	1.37	13393.35	13394.35	1	91	Rainy	27.0	1002	0.01	1.37	82.2
2/10/2009	9317	2.7875	2.7996	1.37	1.37	13394.35	13395.35	1	147	Sunny	30.0	1014	0.01	1.37	82.2
2/10/2009	9644	2.7979	2.8091	1.37	1.37	13395.35	13396.35	1	136	Sunny	30.0	1014	0.01	1.37	82.2
2/10/2009	9645	2.8149	2.8273	1.37	1.37	13396.35	13397.35	1	151	Sunny	30.0	1014	0.01	1.37	82.2
5/10/2009	0065	2.8302	2.8419	1.37	1.37	13397.35	13398.35	1	142	Sunny	27.0	1012	0.01	1.37	82.2
5/10/2009	0067	2.8312	2.8410	1.37	1.37	13398.35	13399.35	1	119	Sunny	27.0	1012	0.01	1.37	82.2
5/10/2009	0068	2.8087	2.8178	1.37	1.37	13799.50	13400.35	1	111	Sunny	27.0	1012	0.01	1.37	82.2
6/10/2009	0069	2.8266	2.8357	1.37	1.37	13400.35	13401.35	1	111	Sunny	29.0	1013	0.01	1.37	82.2
6/10/2009	0071	2.7942	2.8012	1.37	1.37	13401.35	13402.35	1	85	Sunny	29.0	1013	0.01	1.37	82.2
6/10/2009	0072	2.7733	2.7796	1.37	1.37	13402.35	13403.35	1	77	Sunny	29.0	1013	0.01	1.37	82.2
7/10/2009	0073	2.8091	2.8220	1.37	1.37	13403.35	13404.35	1	157	Sunny	30.0	1011	0.01	1.37	82.2
7/10/2009	0074	2.8226	2.8342	1.37	1.37	13404.35	13405.35	1	141	Sunny	30.0	1011	0.01	1.37	82.2
7/10/2009	0076	2.8105	2.8216	1.37	1.37	13405.35	13406.35	1	135	Sunny	30.0	1011	0.01	1.37	82.2
8/10/2009	0077	2.8270	2.8424	1.37	1.37	13406.35	13407.35	1	187	Fine	29.0	1010	0.02	1.37	82.2
8/10/2009	0078	2.7959	2.8091	1.37	1.37	13407.35	13408.35	1	161	Fine	29.0	1010	0.01	1.37	82.2
8/10/2009	0080	2.8114	2.8336	1.37	1.37	13408.35	13409.35	1	270	Fine	29.0	1010	0.02	1.37	82.2
9/10/2009	9773	2.7887	2.8015	1.37	1.37	13409.35	13410.35	1	156	Sunny	29.0	1011	0.01	1.37	82.2
9/10/2009	9771	2.7950	2.8091	1.37	1.37	13410.35	13411.35	1	172	Sunny	29.0	1011	0.01	1.37	82.2
9/10/2009	9770	2.7991	2.8146	1.37	1.37	13411.35	13412.35	1	189	Sunny	29.0	1011	0.02	1.37	82.2
10/10/2009	9765	2.7998	2.8134	1.37	1.37	13412.35	13413.35	1	165	Sunny	29.0	1012	0.01	1.37	82.2
10/10/2009	9763	2.8033	2.8155	1.37	1.37	13413.35	13414.35	1	148	Sunny	29.0	1012	0.01	1.37	82.2
10/10/2009	9761	2.7977	2.8112	1.37	1.37	13414.35	13415.35	1	164	Sunny	29.0	1012	0.01	1.37	82.2
12/10/2009	9756	2.7871	2.7997	1.37	1.37	13415.35	13416.35	1	153	Cloudy	24.0	1008	0.01	1.37	82.2
12/10/2009	9751	2.7859	2.8000	1.37	1.37	13416.35	13417.35	1	172	Cloudy	24.0	1008	0.01	1.37	82.2
12/10/2009	9749	2.7855	2.8002	1.37	1.37	13417.35	13418.35	1	179	Cloudy	24.0	1008	0.01	1.37	82.2
13/10/2009	9747	2.7988	2.8105	1.37	1.37	13418.35	13419.25	1	142	Sunny	26.0	1012	0.01	1.37	82.2
13/10/2009	9668	2.7877	2.7995	1.37	1.37	13419.35	13420.35	1	144	Sunny	26.0	1012	0.01	1.37	82.2
13/10/2009	9670	2.7950	2.8088	1.37	1.37	13420.35	13421.35	1	168	Sunny	26.0	1012	0.01	1.37	82.2
14/10/2009	9671	2.7932	2.8023	1.37	1.37	13421.35	13422.35	1	111	Sunny	26.0	1009	0.01	1.37	82.2
14/10/2009	9744	2.8001	2.8100	1.37	1.37	13422.35	13423.35	1	120	Sunny	26.0	1009	0.01	1.37	82.2
14/10/2009	9743	2.8023	2.8120	1.37	1.37	13423.35	13424.35	1	118	Sunny	26.0	1009	0.01	1.37	82.2
15/10/2009	9741	2.8071	2.8150	1.37	1.37	13424.35	13425.35	1	96	Sunny	26.0	1011	0.01	1.37	82.2
15/10/2009	9740	2.8024	2.8143	1.37	1.37	13425.35	13426.35	1	145	Sunny	26.0	1011	0.01	1.37	82.2
15/10/2009	9739	2.8049	2.8175	1.37	1.37	13426.35	13427.35	1	153	Sunny	27.0	1011	0.01	1.37	82.2
16/10/2009	9737	2.7998	2.8124	1.37	1.37	13427.35	13428.35	1	153	Sunny	25.0	1010	0.01	1.37	82.2
16/10/2009	9736	2.7881	2.8009	1.37	1.37	13428.35	13429.35	1	156	Sunny	25.0	1010	0.01	1.37	82.2
16/10/2009	9734	2.7840	2.7981	1.37	1.37	13429.35	13430.35	1	172	Sunny	26.5	1010	0.01	1.37	82.2

Action Level 340 ug/m3

Min	77
Max	270
Average	139

**Baseline 1-hr TSP Monitoring Results**

Station : **AM2 (Hong Kong & Island Regional office, WSD)**

Date	Filter Identification No.	Filter Weight (g)		Flow Rate (m <sup>3</sup> /min.)		Elapse Time		Sampling Time(hrs.)	Conc. (µg/m <sup>3</sup> )	Weather Condition	Ave. Air Temp. (°C)	Atmospheric Pressure(hPa)	Particulate weight(g)	Av. flow (m <sup>3</sup> /min)	Total vol. (m <sup>3</sup> )
		Initial	Final	Initial	Final	Initial	Final								
29/09/09	9616	2.8107	2.8183	1.26	1.26	13104.12	13105.12	1	101	Rainy	25.0	1002	0.01	1.26	75.6
29/09/09	9617	2.8415	2.8498	1.26	1.26	13105.12	13106.12	1	110	Rainy	25.0	1002	0.01	1.26	75.6
29/09/09	9618	2.8331	2.8415	1.26	1.26	13106.12	13107.12	1	111	Rainy	25.0	1002	0.01	1.26	75.6
30/09/09	9323	2.7951	2.8021	1.26	1.26	13107.12	13107.12	1	93	Rainy	27.0	1002	0.01	1.26	75.6
30/09/09	9319	2.7886	2.7959	1.26	1.26	13108.12	13109.12	1	97	Rainy	27.0	1002	0.01	1.26	75.6
30/09/09	9320	2.7902	2.7977	1.26	1.26	13109.12	13110.12	1	99	Rainy	27.0	1002	0.01	1.26	75.6
1/10/2009	9322	2.7929	2.8020	1.26	1.26	13110.12	13111.12	1	120	Sunny	27.0	1012	0.01	1.26	75.6
1/10/2009	0062	2.7994	2.8079	1.26	1.26	13111.12	13112.12	1	112	Sunny	27.0	1012	0.01	1.26	75.6
1/10/2009	0063	2.8193	2.8279	1.26	1.26	13112.12	13113.12	1	114	Sunny	27.0	1012	0.01	1.26	75.6
2/10/2009	0064	2.8090	2.8151	1.26	1.26	13113.12	13114.12	1	81	Sunny	27.5	1014	0.01	1.26	75.6
2/10/2009	9672	2.7869	2.7977	1.26	1.26	13114.12	13115.12	1	143	Sunny	28.0	1014	0.01	1.26	75.6
2/10/2009	9799	2.7880	2.7968	1.26	1.26	13115.12	13116.12	1	116	Sunny	28.5	1014	0.01	1.26	75.6
3/10/2009	9798	2.7891	2.7972	1.26	1.26	13116.12	13117.12	1	107	Fine	27.0	1010	0.01	1.26	75.6
3/10/2009	9321	2.7922	2.8064	1.26	1.26	13117.12	13118.12	1	188	Fine	27.0	1010	0.01	1.26	75.6
3/10/2009	9795	2.7869	2.7997	1.26	1.26	13118.12	13119.12	1	169	Fine	27.5	1010	0.01	1.26	75.6
4/10/2009	9794	2.7871	2.8005	1.26	1.26	13119.12	13120.12	1	177	Sunny	26.0	1014	0.01	1.26	75.6
4/10/2009	9792	2.7859	2.7983	1.26	1.26	13120.12	13121.12	1	164	Sunny	26.5	1014	0.01	1.26	75.6
4/10/2009	9791	2.7871	2.8015	1.26	1.26	13121.12	13122.12	1	190	Sunny	27.5	1014	0.01	1.26	75.6
5/10/2009	9790	2.7849	2.8000	1.26	1.26	13122.12	13123.12	1	200	Sunny	26.0	1012	0.02	1.26	75.6
5/10/2009	9788	2.7817	2.7979	1.26	1.26	13123.12	13124.12	1	214	Sunny	26.0	1012	0.02	1.26	75.6
5/10/2009	9786	2.7879	2.8025	1.26	1.26	13124.12	13125.12	1	193	Sunny	26.5	1012	0.01	1.26	75.6
6/10/2009	9785	2.7900	2.8043	1.26	1.26	13125.12	13126.12	1	189	Sunny	26.0	1013	0.01	1.26	75.6
6/10/2009	9784	2.7929	2.8083	1.26	1.26	13126.12	13127.12	1	204	Sunny	26.0	1013	0.02	1.26	75.6
6/10/2009	9882	2.7988	2.8153	1.26	1.26	13127.12	13128.12	1	218	Sunny	27.0	1013	0.02	1.26	75.6
7/10/2009	9781	2.7939	2.8065	1.26	1.26	13128.12	13128.19	1	167	Sunny	25.0	1011	0.01	1.26	75.6
7/10/2009	9780	2.7921	2.8069	1.26	1.26	13129.12	13130.12	1	196	Sunny	26.5	1011	0.01	1.26	75.6
7/10/2009	9779	2.7970	2.8131	1.26	1.26	13130.12	13131.12	1	213	Sunny	28.5	1011	0.02	1.26	75.6
8/10/2009	9777	2.7967	2.8092	1.26	1.26	13131.12	13132.12	1	165	Sunny	26.5	1010	0.01	1.26	75.6
8/10/2009	9776	2.7961	2.8088	1.26	1.26	13132.12	13133.12	1	168	Sunny	27.5	1010	0.01	1.26	75.6
8/10/2009	9775	2.7849	2.7976	1.26	1.26	13133.12	13134.12	1	168	Sunny	28.5	1010	0.01	1.26	75.6
9/10/2009	9772	2.7878	2.7954	1.26	1.26	13134.12	13135.12	1	101	Sunny	26.0	1011	0.01	1.26	75.6
9/10/2009	9768	2.7911	2.8002	1.26	1.26	13135.12	13136.12	1	120	Sunny	26.0	1011	0.01	1.26	75.6
9/10/2009	9767	2.7967	2.8088	1.26	1.26	13136.12	13137.12	1	160	Sunny	27.5	1011	0.01	1.26	75.6
10/10/2009	9764	2.8006	2.8144	1.26	1.26	13137.12	13138.12	1	183	Sunny	26.0	1012	0.01	1.26	75.6
10/10/2009	9762	2.7992	2.8123	1.26	1.26	13138.12	13139.12	1	173	Sunny	26.0	1012	0.01	1.26	75.6
10/10/2009	9760	2.7957	2.8097	1.26	1.26	13139.12	13140.12	1	185	Sunny	26.5	1012	0.01	1.26	75.6
11/10/2009	9759	2.7924	2.8037	1.26	1.26	13140.12	13141.12	1	149	Cloudy	25.0	1010	0.01	1.26	75.6
11/10/2009	9755	2.7914	2.8017	1.26	1.26	13141.12	13141.12	1	136	Cloudy	25.0	1010	0.01	1.26	75.6
11/10/2009	9754	2.7906	2.8039	1.26	1.26	13142.12	13143.12	1	176	Cloudy	25.5	1010	0.01	1.26	75.6
12/10/2009	9753	2.7844	2.8007	1.26	1.26	13143.12	13144.12	1	216	Cloudy	24.0	1008	0.02	1.26	75.6
12/10/2009	9748	2.7823	2.7968	1.26	1.26	13144.12	13145.12	1	192	Cloudy	24.0	1008	0.01	1.26	75.6
12/10/2009	9746	2.7929	2.8089	1.26	1.26	13145.12	13145.12	1	212	Cloudy	24.0	1008	0.02	1.26	75.6

Action Level **352 ug/m3**

Min	81
Max	218
Average	157

**Baseline 1-hr TSP Monitoring Results**

Station : **AM3 (Wan Chai East PTW)**

Date	Filter Identification No.	Filter Weight (g)		Flow Rate (m <sup>3</sup> /min.)		Elapse Time		Sampling Time(hrs.)	Conc. (µg/m <sup>3</sup> )	Weather Condition	Ave. Air Temp. (°C)	Atmospheric Pressure(hPa)	Particulate weight(g)	Av. flow (m <sup>3</sup> /min)	Total vol. (m <sup>3</sup> )
		Initial	Final	Initial	Final	Initial	Final								
29/09/09	9627	2.7871	2.7924	1.25	1.25	9354.57	9355.57	1	71	Rainy	25.0	1002	0.01	1.25	75.0
29/9/09	9633	2.7880	2.7935	1.25	1.25	9355.57	9356.57	1	73	Rainy	25.0	1002	0.01	1.25	75.0
29/9/09	9625	2.7827	2.7887	1.25	1.25	9356.57	9357.57	1	80	Rainy	25.0	1002	0.01	1.25	75.0
30/09/09	9626	2.7859	2.7925	1.25	1.25	9357.57	9358.57	1	88	Cloudy	27.0	1002	0.01	1.25	75.0
30/09/09	9629	2.7885	2.7956	1.25	1.25	9358.57	9359.57	1	95	Cloudy	27.0	1002	0.01	1.25	75.0
30/09/09	9632	2.7862	2.7940	1.25	1.25	9359.57	9361.57	1	104	Cloudy	27.0	1002	0.01	1.25	75.0
1/10/2009	9636	2.7887	2.7950	1.25	1.25	9361.57	9362.57	1	84	Cloudy	27.0	1012	0.01	1.25	75.0
1/10/2009	9634	2.7839	2.7928	1.25	1.25	9362.57	9363.57	1	119	Sunny	27.0	1012	0.01	1.25	75.0
1/10/2009	9635	2.7856	2.7950	1.25	1.25	9363.57	9364.57	1	125	Sunny	27.0	1012	0.01	1.25	75.0
2/10/2009	9631	2.7847	2.7954	1.25	1.25	9364.57	9365.57	1	143	Sunny	27.5	1014	0.01	1.25	75.0
2/10/2009	9638	2.7918	2.8030	1.25	1.25	9365.57	9366.57	1	149	Sunny	28.0	1014	0.01	1.25	75.0
2/10/2009	9639	2.7927	2.8049	1.25	1.25	9366.57	9367.57	1	163	Sunny	30.0	1014	0.01	1.25	75.0
3/10/2009	9649	2.7966	2.8045	1.25	1.25	9367.57	9368.57	1	105	Fine	27.0	1010	0.01	1.25	75.0
3/10/2009	9650	2.7927	2.8023	1.25	1.25	9368.57	9369.57	1	128	Fine	27.0	1010	0.01	1.25	75.0
3/10/2009	9651	2.7911	2.8019	1.25	1.25	9369.57	9370.57	1	144	Fine	28.0	1010	0.01	1.25	75.0
4/10/2009	9661	2.7833	2.7920	1.25	1.25	9370.57	9371.57	1	116	Sunny	26.0	1014	0.01	1.25	75.0
4/10/2009	9662	2.7819	2.7941	1.25	1.25	9371.57	9372.57	1	163	Sunny	26.5	1014	0.01	1.25	75.0
4/10/2009	9663	2.7842	2.7953	1.25	1.25	9372.57	9373.57	1	148	Sunny	27.5	1014	0.01	1.25	75.0
5/10/2009	9601	2.7997	2.8125	1.25	1.25	9373.57	9374.57	1	171	Sunny	26.0	1012	0.01	1.25	75.0
5/10/2009	9602	2.7975	2.8119	1.25	1.25	9374.57	9375.57	1	192	Sunny	26.0	1012	0.01	1.25	75.0
5/10/2009	9603	2.7988	2.8130	1.25	1.25	9375.57	9376.57	1	189	Sunny	27.0	1012	0.01	1.25	75.0
6/10/2009	9605	2.7955	2.8049	1.25	1.25	9376.57	9377.57	1	125	Sunny	26.0	1013	0.01	1.25	75.0
6/10/2009	9616	2.7951	2.8066	1.25	1.25	9377.57	9378.57	1	153	Sunny	26.0	1013	0.01	1.25	75.0
6/10/2009	9617	2.7981	2.8118	1.25	1.25	9378.57	9379.57	1	183	Sunny	28.5	1013	0.01	1.25	75.0
7/10/2009	9618	2.7974	2.8110	1.25	1.25	9379.57	9380.57	1	181	Sunny	25.0	1011	0.01	1.25	75.0
7/10/2009	9619	2.7941	2.8082	1.25	1.25	9380.57	9381.57	1	188	Sunny	29.5	1011	0.01	1.25	75.0
7/10/2009	9620	2.7960	2.8121	1.25	1.25	9381.57	9382.57	1	215	Sunny	30.0	1011	0.02	1.25	75.0
8/10/2009	9622	2.7940	2.8100	1.25	1.25	9382.57	9383.57	1	213	Sunny	26.0	1010	0.02	1.25	75.0
8/10/2009	9623	2.7942	2.8120	1.25	1.25	9383.57	9384.57	1	237	Fine	26.5	1010	0.02	1.25	75.0
8/10/2009	9640	2.7959	2.8145	1.25	1.25	9384.57	9385.57	1	248	Fine	29.0	1010	0.02	1.25	75.0
9/10/2009	9641	2.7988	2.8132	1.25	1.25	9385.57	9386.57	1	192	Sunny	26.0	1011	0.01	1.25	75.0
9/10/2009	9643	2.7977	2.8139	1.25	1.25	9386.57	9387.57	1	216	Sunny	26.0	1011	0.02	1.25	75.0
9/10/2009	9674	2.7878	2.8045	1.25	1.25	9387.57	9388.57	1	223	Sunny	29.0	1011	0.02	1.25	75.0
10/10/2009	9676	2.7924	2.8067	1.25	1.25	9388.57	9389.57	1	191	Sunny	26.0	1012	0.01	1.25	75.0
10/10/2009	9680	2.7940	2.8098	1.25	1.25	9389.57	9390.57	1	211	Sunny	26.5	1012	0.02	1.25	75.0
10/10/2009	9681	2.7938	2.8100	1.25	1.25	9390.57	9391.57	1	216	Sunny	29.0	1013	0.02	1.25	75.0
11/10/2009	9677	2.7966	2.8089	1.25	1.25	9391.57	9392.57	1	164	Cloudy	25.0	1010	0.01	1.25	75.0
11/10/2009	9678	2.7987	2.8134	1.25	1.25	9392.57	9393.57	1	196	Cloudy	25.0	1010	0.01	1.25	75.0
11/10/2009	9692	2.8375	2.8512	1.25	1.25	9393.57	9394.57	1	183	Cloudy	25.0	1010	0.01	1.25	75.0
12/10/2009	9694	2.8486	2.8650	1.25	1.25	9394.57	9395.57	1	219	Cloudy	26.0	1008	0.02	1.25	75.0
12/10/2009	9804	2.8020	2.8166	1.25	1.25	9395.57	9396.57	1	195	Cloudy	24.0	1008	0.01	1.25	75.0
12/10/2009	9805	2.8487	2.8634	1.25	1.25	9396.57	9397.57	1	196	Cloudy	24.0	1008	0.01	1.25	75.0

**Action Level 355 ug/m3**

Min	71
Max	248
Average	162

**Baseline 1-hr TSP Monitoring Results**

Station : **AM4** (A Location within the DSD Central PTW)

Date	Filter Identification No.	Filter Weight (g)		Flow Rate (m <sup>3</sup> /min.)		Elapse Time		Sampling Time(hrs.)	Conc. (µg/m <sup>3</sup> )	Weather Condition	Ave. Air Temp. (°C)	Atmospheric Pressure(hPa)	Particulate weight(g)	Av. flow (m <sup>3</sup> /min)	Total vol. (m <sup>3</sup> )
		Initial	Final	Initial	Final	Initial	Final								
9/10/2009	0081	2.8008	2.8289	1.36	1.36	13104.03	13105.03	1	344	Sunny	26.0	1011	0.03	1.36	81.6
9/10/2009	0082	2.7863	2.8100	1.36	1.36	13105.03	13106.03	1	290	Sunny	29.0	1011	0.02	1.36	81.6
9/10/2009	9679	2.7959	2.8125	1.36	1.36	13106.03	13107.03	1	203	Sunny	29.0	1011	0.02	1.36	81.6
10/10/2009	0083	2.8148	2.8264	1.36	1.36	13107.03	13108.03	1	142	Sunny	26.0	1012	0.01	1.36	81.6
10/10/2009	0085	2.8259	2.8529	1.36	1.36	13108.03	13109.03	1	331	Sunny	26.0	1012	0.03	1.36	81.6
10/10/2009	9603	2.7968	2.8129	1.36	1.36	13109.03	13110.03	1	197	Sunny	29.0	1012	0.02	1.36	81.6
11/10/2009	0086	2.8490	2.8692	1.36	1.36	13110.03	13111.03	1	248	Fine	25.0	1010	0.02	1.36	81.6
11/10/2009	0087	2.8081	2.8236	1.36	1.36	13111.03	13112.03	1	190	Cloudy	25.0	1010	0.02	1.36	81.6
11/10/2009	0089	2.8124	2.8437	1.36	1.36	13112.03	13113.03	1	384	Cloudy	25.0	1010	0.03	1.36	81.6
12/10/2009	0099	2.8473	2.8619	1.36	1.36	13113.03	13114.03	1	179	Rainy	24.0	1008	0.01	1.36	81.6
12/10/2009	9695	2.8355	2.8498	1.36	1.36	13114.03	13115.03	1	175	Cloudy	24.0	1008	0.01	1.36	81.6
12/10/2009	9696	2.9113	2.9277	1.36	1.36	13115.03	13116.03	1	201	Sunny	24.0	1008	0.02	1.36	81.6
13/10/2009	0097	2.8268	2.8504	1.36	1.36	13116.03	13117.03	1	289	Sunny	26.0	1012	0.02	1.36	81.6
13/10/2009	0096	2.8314	2.8482	1.36	1.36	13117.03	13118.03	1	206	Sunny	26.0	1012	0.02	1.36	81.6
13/10/2009	0094	2.8293	2.8510	1.36	1.36	13118.03	13119.03	1	266	Sunny	29.0	1012	0.02	1.36	81.6
14/10/2009	0090	2.8262	2.8422	1.36	1.36	13119.03	13120.03	1	196	Rainy	25.0	1009	0.02	1.36	81.6
14/10/2009	0091	2.8193	2.8277	1.36	1.36	13120.03	13121.03	1	103	Cloudy	25.0	1009	0.01	1.36	81.6
14/10/2009	0093	2.8501	2.8574	1.36	1.36	13121.03	13122.03	1	89	Cloudy	26.0	1009	0.01	1.36	81.6
15/10/2009	0152	2.8600	2.8697	1.36	1.36	13122.03	13123.03	1	119	Fine	26.0	1011	0.01	1.36	81.6
15/10/2009	0153	2.8638	2.8857	1.36	1.36	13123.03	13124.03	1	268	Fine	26.0	1011	0.02	1.36	81.6
15/10/2009	0154	2.8738	2.8847	1.36	1.36	13124.03	13125.03	1	134	Fine	28.0	1011	0.01	1.36	81.6
16/10/2009	0157	2.8784	2.9046	1.36	1.36	13125.03	13126.03	1	321	Cloudy	25.0	1010	0.03	1.36	81.6
16/10/2009	0158	2.8789	2.8988	1.36	1.36	13126.03	13127.03	1	244	Cloudy	26.0	1010	0.02	1.36	81.6
16/10/2009	0156	2.8495	2.8698	1.36	1.36	13127.03	13128.03	1	249	Fine	27.0	1010	0.02	1.36	81.6
17/10/2009	0164	2.8601	2.8682	1.36	1.36	13128.03	13129.08	1	99	Sunny	25.0	1012	0.01	1.36	81.6
17/10/2009	0165	2.8833	2.8987	1.36	1.36	13129.03	13130.03	1	189	Sunny	26.0	1012	0.02	1.36	81.6
17/10/2009	0166	2.8946	2.9072	1.36	1.36	13130.03	13131.03	1	154	Sunny	26.0	1012	0.01	1.36	81.6
18/10/2009	0168	2.8878	2.9070	1.36	1.36	13131.03	13132.03	1	235	Sunny	25.0	1012	0.02	1.36	81.6
18/10/2009	0169	2.8519	2.8688	1.36	1.36	13132.03	13133.03	1	207	Sunny	25.0	1012	0.02	1.36	81.6
18/10/2009	0170	2.8843	2.8975	1.36	1.36	13133.03	13134.03	1	162	Sunny	26.0	1012	0.01	1.36	81.6
19/10/2009	0172	2.8844	2.9061	1.36	1.36	13134.03	13135.03	1	266	Fine	25.0	1012	0.02	1.36	81.6
19/10/2009	0160	2.9157	2.9286	1.36	1.36	13135.03	13136.03	1	158	Cloudy	25.0	1012	0.01	1.36	81.6
19/10/2009	0162	2.9085	2.9269	1.36	1.36	13136.03	13137.03	1	225	Cloudy	26.0	1012	0.02	1.36	81.6
20/10/2009	0163	2.8773	2.8889	1.36	1.36	13137.03	13138.03	1	142	Cloudy	25.0	1009	0.01	1.36	81.6
20/10/2009	0057	2.7814	2.8142	1.36	1.36	13138.03	13139.03	1	402	Cloudy	26.0	1009	0.03	1.36	81.6
20/10/2009	0173	2.8880	2.9057	1.36	1.36	13139.03	13140.03	1	217	Cloudy	26.0	1009	0.02	1.36	81.6
21/10/2009	0177	2.8676	2.8910	1.36	1.36	13140.03	13141.03	1	287	Cloudy	24.0	1010	0.02	1.36	81.6
21/10/2009	0175	2.9005	2.9135	1.36	1.36	13141.03	13142.03	1	159	Cloudy	25.0	1010	0.01	1.36	81.6
21/10/2009	0176	2.8829	2.9165	1.36	1.36	13142.03	13143.03	1	412	Cloudy	25.0	1010	0.03	1.36	81.6
22/10/2009	0179	2.9354	2.9566	1.36	1.36	13143.03	13144.03	1	260	Sunny	25.0	1015	0.02	1.36	81.6
22/10/2009	0180	2.8499	2.8606	1.36	1.36	13144.03	13145.03	1	131	Sunny	28.0	1015	0.01	1.36	81.6
22/10/2009	0182	2.8822	2.8947	1.36	1.36	13145.03	13146.03	1	153	Sunny	28.0	1015	0.01	1.36	81.6

Action Level **393 ug/m3**

Min	89
Max	412
Average	220



**Baseline 1-hr TSP Monitoring Results**

Station : **AM5 (Western Wholesale Food Market)**

Date	Filter Identification No.	Filter Weight (g)		Flow Rate (m <sup>3</sup> /min.)		Elapse Time		Sampling Time(hrs.)	Conc. (µg/m <sup>3</sup> )	Weather Condition	Ave. Air Temp. (°C)	Atmospheric Pressure(hPa)	Particulate weight(g)	Av. flow (m <sup>3</sup> /min)	Total vol. (m <sup>3</sup> )
		Initial	Final	Initial	Final	Initial	Final								
25/9/09	0002	2.8050	2.8111	1.22	1.22	9967.21	9968.21	1	83	Sunny	29.0	1012	0.01	1.22	73.2
25/9/09	0003	2.8452	2.8503	1.22	1.22	9968.21	9969.21	1	70	Sunny	29.0	1012	0.01	1.22	73.2
25/9/09	0004	2.8278	2.8346	1.22	1.22	9969.21	9970.21	1	93	Sunny	29.0	1012	0.01	1.22	73.2
26/09/09	0005	2.8088	2.8235	1.22	1.22	9970.21	9971.21	1	201	Sunny	29.0	1012	0.01	1.22	73.2
26/09/09	0006	2.7984	2.8114	1.22	1.22	9971.21	9972.21	1	178	Sunny	29.0	1012	0.01	1.22	73.2
26/09/09	0007	2.7924	2.8042	1.22	1.22	9972.21	9973.21	1	161	Sunny	29.0	1012	0.01	1.22	73.2
27/09/09	0009	2.8033	2.8163	1.22	1.22	9973.21	9974.21	1	178	Sunny	30.0	1010	0.01	1.22	73.2
27/09/09	0010	2.8211	2.8311	1.22	1.22	9974.21	9975.21	1	137	Sunny	30.0	1010	0.01	1.22	73.2
27/09/09	0011	2.7740	2.7833	1.22	1.22	9975.21	9976.21	1	127	Sunny	30.0	1010	0.01	1.22	73.2
28/09/09	0013	2.8220	2.8347	1.22	1.22	9976.21	9977.21	1	173	Rainy	27.0	1012	0.01	1.22	73.2
28/09/09	0014	2.8016	2.8077	1.22	1.22	9977.21	9978.21	1	83	Rainy	27.0	1012	0.01	1.22	73.2
28/09/09	0015	2.7966	2.8060	1.22	1.22	9978.21	9979.21	1	128	Rainy	27.5	1012	0.01	1.22	73.2
29/09/09	0016	2.7970	2.8051	1.22	1.22	9979.21	9980.21	1	111	Rainy	25.0	1002	0.01	1.22	73.2
29/09/09	0018	2.8024	2.8076	1.22	1.22	9980.21	9981.21	1	71	Rainy	25.0	1002	0.01	1.22	73.2
29/09/09	0019	2.8201	2.8256	1.22	1.22	9981.21	9982.21	1	75	Rainy	25.0	1002	0.01	1.22	73.2
30/09/09	0021	2.7946	2.8010	1.22	1.22	9982.21	9983.21	1	87	Rainy	27.0	1002	0.01	1.22	73.2
30/09/09	0022	2.8001	2.8046	1.22	1.22	9983.21	9984.21	1	61	Rainy	27.0	1002	0.00	1.22	73.2
30/09/09	0023	2.8142	2.8189	1.22	1.22	9984.21	9985.21	1	64	Rainy	27.0	1002	0.00	1.22	73.2
1/10/2009	0024	2.7793	2.7868	1.22	1.22	9985.21	9986.21	1	102	Sunny	26.0	1012	0.01	1.22	73.2
1/10/2009	0025	2.7818	2.7900	1.22	1.22	9986.21	9987.21	1	112	Sunny	26.5	1012	0.01	1.22	73.2
1/10/2009	0026	2.7711	2.7788	1.22	1.22	9987.21	9988.21	1	105	Sunny	27.5	1012	0.01	1.22	73.2
2/10/2009	0028	2.8430	2.8566	1.22	1.22	9988.21	9989.21	1	186	Sunny	26.0	1014	0.01	1.22	73.2
2/10/2009	0029	2.8045	2.8126	1.22	1.22	9989.21	9990.21	1	111	Sunny	26.5	1014	0.01	1.22	73.2
2/10/2009	0030	2.7904	2.8015	1.22	1.22	9990.21	9991.21	1	152	Sunny	27.5	1014	0.01	1.22	73.2
3/10/2009	0032	2.7815	2.7897	1.22	1.22	9991.21	9992.21	1	112	Sunny	26.0	1010	0.01	1.22	73.2
3/10/2009	0033	2.8280	2.8374	1.22	1.22	9992.21	9993.21	1	128	Sunny	26.5	1010	0.01	1.22	73.2
3/10/2009	0034	2.8227	2.8370	1.22	1.22	9993.21	9994.21	1	195	Sunny	27.5	1010	0.01	1.22	73.2
4/10/2009	0036	2.8065	2.8184	1.22	1.22	9994.21	9995.21	1	163	Sunny	26.0	1014	0.01	1.22	73.2
4/10/2009	0037	2.7953	2.8050	1.22	1.22	9995.21	9996.21	1	133	Sunny	26.5	1014	0.01	1.22	73.2
4/10/2009	0038	2.8305	2.8406	1.22	1.22	9996.21	9997.21	1	138	Sunny	27.5	1014	0.01	1.22	73.2
5/10/2009	0040	2.7922	2.8042	1.22	1.22	9997.21	9998.21	1	164	Sunny	26.0	1012	0.01	1.22	73.2
5/10/2009	0041	2.7944	2.8020	1.22	1.22	9998.21	9999.21	1	104	Sunny	26.5	1012	0.01	1.22	73.2
5/10/2009	0042	2.8234	2.8333	1.22	1.22	9999.21	10000.21	1	135	Sunny	27.0	1012	0.01	1.22	73.2
6/10/2009	0044	2.8257	2.8383	1.22	1.22	10000.21	10001.21	1	172	Sunny	25.0	1013	0.01	1.22	73.2
6/10/2009	0045	2.8049	2.8140	1.22	1.22	10001.21	10002.21	1	124	Sunny	25.0	1013	0.01	1.22	73.2
6/10/2009	0046	2.8169	2.8254	1.22	1.22	10002.21	10003.21	1	116	Sunny	25.5	1013	0.01	1.22	73.2
7/10/2009	0048	2.8276	2.8370	1.22	1.22	10003.21	10004.21	1	128	Sunny	26.0	1011	0.01	1.22	73.2
7/10/2009	0049	2.7667	2.7743	1.22	1.22	10004.21	10005.21	1	104	Sunny	26.0	1011	0.01	1.22	73.2
7/10/2009	0050	2.8134	2.8228	1.22	1.22	10005.21	10006.21	1	128	Sunny	26.5	1011	0.01	1.22	73.2
8/10/2009	0052	2.8409	2.8525	1.22	1.22	10006.21	10007.21	1	158	Fine	26.0	1010	0.01	1.22	73.2
8/10/2009	0053	2.7940	2.8026	1.22	1.22	10007.21	10008.21	1	117	Fine	26.0	1010	0.01	1.22	73.2
8/10/2009	0054	2.8058	2.8145	1.22	1.22	10008.21	10009.21	1	119	Fine	26.5	1010	0.01	1.22	73.2

Action Level **332 ug/m3**

Min	61
Max	201
Average	126

**Baseline 1-hr TSP Monitoring Results**

Station : **AM6 (Works Site Boundary - Stonecutters Island Sewage Treatment Works)**

Date	Filter Identification No.	Filter Weight (g)		Flow Rate (m <sup>3</sup> /min.)		Elapse Time		Sampling Time(hrs.)	Conc. (µg/m <sup>3</sup> )	Weather Condition	Ave. Air Temp. (°C)	Atmospheric Pressure(hPa)	Particulate weight(g)	Av. flow (m <sup>3</sup> /min)	Total vol. (m <sup>3</sup> )
		Initial	Final	Initial	Final	Initial	Final								
9/10/2009	0101	2.8588	2.8670	1.36	1.36	9244.38	9245.38	1	100	Sunny	28.0	1011	0.01	1.36	81.6
9/10/2009	0103	2.8859	2.9102	1.36	1.36	9245.38	9246.38	1	298	Sunny	29.0	1011	0.02	1.36	81.6
9/10/2009	0104	2.8694	2.8852	1.36	1.36	9246.38	9247.38	1	194	Sunny	29.0	1011	0.02	1.36	81.6
10/10/2009	0105	2.8490	2.8557	1.36	1.36	9247.38	9248.38	1	82	Sunny	26.0	1012	0.01	1.36	81.6
10/10/2009	0106	2.8840	2.8917	1.36	1.36	9248.38	9249.38	1	94	Sunny	26.0	1012	0.01	1.36	81.6
10/10/2009	0107	2.8942	2.8995	1.36	1.36	9249.38	9250.38	1	65	Sunny	27.0	1012	0.01	1.36	81.6
12/10/2009	0109	2.8775	2.8897	1.36	1.36	9250.38	9251.38	1	150	Sunny	24.0	1008	0.01	1.36	81.6
12/10/2009	0110	2.9230	2.9303	1.36	1.36	9251.38	9252.38	1	89	Sunny	24.0	1008	0.01	1.36	81.6
12/10/2009	0112	2.9230	2.9285	1.36	1.36	9252.38	9253.38	1	67	Sunny	24.0	1008	0.01	1.36	81.6
13/10/2009	0113	2.8683	2.8814	1.36	1.36	9253.38	9254.38	1	161	Sunny	26.0	1012	0.01	1.36	81.6
13/10/2009	0114	2.8842	2.9014	1.36	1.36	9254.38	9255.38	1	211	Sunny	26.0	1012	0.02	1.36	81.6
13/10/2009	0115	2.8790	2.8909	1.36	1.36	9255.38	9256.38	1	146	Sunny	26.0	1012	0.01	1.36	81.6
14/10/2009	0117	2.8708	2.8823	1.36	1.36	9256.38	9257.38	1	141	Cloudy	25.0	1009	0.01	1.36	81.6
14/10/2009	0118	2.8237	2.8338	1.36	1.36	9257.38	9258.38	1	124	Cloudy	25.0	1009	0.01	1.36	81.6
14/10/2009	0119	2.8225	2.8337	1.36	1.36	9258.38	9259.38	1	137	Cloudy	26.0	1009	0.01	1.36	81.6
15/10/2009	0121	2.8101	2.8246	1.36	1.36	9259.38	9260.38	1	178	Sunny	26.0	1011	0.01	1.36	81.6
15/10/2009	0122	2.9005	2.9090	1.36	1.36	9260.38	9261.38	1	104	Sunny	26.0	1011	0.01	1.36	81.6
15/10/2009	0123	2.8875	2.8987	1.36	1.36	9261.38	9262.38	1	137	Sunny	27.0	1011	0.01	1.36	81.6
16/10/2009	0125	2.8507	2.8652	1.36	1.36	9262.38	9263.38	1	178	Sunny	27.0	1010	0.01	1.36	81.6
16/10/2009	0126	2.8978	2.9061	1.36	1.36	9263.38	9264.38	1	102	Sunny	28.0	1010	0.01	1.36	81.6
16/10/2009	0127	2.8892	2.9012	1.36	1.36	9264.38	9265.38	1	147	Sunny	28.0	1010	0.01	1.36	81.6
17/10/2009	0129	2.8470	2.8610	1.36	1.36	9265.38	9266.38	1	172	Sunny	26.0	1012	0.01	1.36	81.6
17/10/2009	0130	2.8689	2.8840	1.36	1.36	9266.38	9267.38	1	185	Sunny	26.0	1012	0.02	1.36	81.6
17/10/2009	0131	2.8982	2.9152	1.36	1.36	9267.38	9268.38	1	208	Sunny	26.0	1012	0.02	1.36	81.6
18/10/2009	0133	2.8501	2.8636	1.36	1.36	9268.38	9269.38	1	165	Sunny	26.0	1012	0.01	1.36	81.6
18/10/2009	0134	2.8672	2.8780	1.36	1.36	9269.38	9270.38	1	132	Sunny	26.0	1012	0.01	1.36	81.6
18/10/2009	0135	2.9194	2.9277	1.36	1.36	9270.38	9271.38	1	102	Sunny	26.0	1012	0.01	1.36	81.6
19/10/2009	0137	2.9196	2.9563	1.36	1.36	9271.38	9272.38	1	450	Cloudy	26.0	1012	0.04	1.36	81.6
19/10/2009	0138	2.8698	2.8887	1.36	1.36	9272.38	9273.38	1	232	Cloudy	26.0	1012	0.02	1.36	81.6
19/10/2009	0139	2.8681	2.8943	1.36	1.36	9273.38	9274.38	1	321	Cloudy	26.0	1012	0.03	1.36	81.6
20/10/2009	0141	2.8858	2.9126	1.36	1.36	9274.38	9275.38	1	328	Cloudy	26.0	1009	0.03	1.36	81.6
20/10/2009	0142	2.8978	2.9278	1.36	1.36	9275.38	9276.38	1	368	Cloudy	26.0	1009	0.03	1.36	81.6
20/10/2009	0143	2.8904	2.9240	1.36	1.36	9276.38	9277.38	1	412	Cloudy	26.0	1009	0.03	1.36	81.6
21/10/2009	0145	2.8796	2.9031	1.36	1.36	9277.38	9278.38	1	288	Cloudy	25.0	1012	0.02	1.36	81.6
21/10/2009	0146	2.8311	2.8513	1.36	1.36	9278.38	9279.38	1	248	Cloudy	25.0	1012	0.02	1.36	81.6
21/10/2009	0147	2.8775	2.9013	1.36	1.36	9279.38	9280.38	1	292	Cloudy	25.0	1012	0.02	1.36	81.6
22/10/2009	0149	2.8563	2.9015	1.36	1.36	9280.38	9281.38	1	554	Fine	28.0	1015	0.05	1.36	81.6
22/10/2009	0150	2.8636	2.8959	1.36	1.36	9281.38	9282.38	1	396	Fine	28.0	1015	0.03	1.36	81.6
22/10/2009	0058	2.7696	2.8014	1.36	1.36	9282.38	9283.38	1	390	Fine	28.0	1015	0.03	1.36	81.6
23/10/2009	0060	2.8243	2.8373	1.36	1.36	9283.38	9284.38	1	159	Sunny	26.0	1015	0.01	1.36	81.6
23/10/2009	0201	2.8399	2.8555	1.36	1.36	9284.38	9285.38	1	191	Sunny	26.0	1015	0.02	1.36	81.6
23/10/2009	0202	2.8348	2.8528	1.36	1.36	9285.38	9286.38	1	221	Sunny	27.0	1015	0.02	1.36	81.6

Min	65
Max	554
Average	208

Action Level <sup>(a)</sup> **346 ug/m3**

Notes:  
 (a) Action Level is determined based on the average 1-hr TSP measured at at AM6 and the baseline monitoring data obtained from the Construction of Disinfection Facilities Project in HATS Stage 2A

Meteorological Data Extracted from the Hong Kong Observatory

Date	Weather	King's Park Station				
		Average Air Temperature (°C)	Average Relative Humidity (%)	Total Rainfall (mm)	Average Wind Speed (km/h)	Wind Direction
9/28/2009	Rainy	25.3#	88#	53.5#	11.3#	NE
9/29/2009	Rainy	25.3	85	34.0	14.0	NE
9/30/2009	Rainy	26.5	86	60.0	8.8	E
10/1/2009	Sunny	27.5	80.0	0.0	0-16	-
10/2/2009	Sunny	28.0	73.0	0.0	0-17	-
10/3/2009	Sunny	27.7	71.0	0.0	0-12	-
10/4/2009	Sunny	28.0	57.0	0.0	0-21	N
10/5/2009	Sunny	28.1	51.0	0.0	0-18	NE
10/6/2009	Sunny	28.4	57.0	0.0	0-19	W
10/7/2009	Rainy	27.7	70.0	25.4	0-15	SE
10/8/2009	Sunny	26.2	72.0	0.0	0-12	SE
10/9/2009	Sunny	26.6	66.0	0.0	-	-
10/10/2009	Sunny	26.8	66.0	0.0	-	-
10/11/2009	Rainy	25.9	80.0	5.1	3-25	-
10/12/2009	Rainy	25.3	84.0	1.5	1-22	SE
10/13/2009	Sunny	26.7	78.0	0.0	5-24	E

# less than 24 hourly observations per day  
 - data were not available

Date	Weather	Kai Tak Station				
		Average Air Temperature (°C) *	Average Relative Humidity (%) *	Total Rainfall (mm) *	Average Wind Speed (km/h)	Wind Direction
9/29/2009	Rainy	25.3	85	34.0	14.0 *	NE *
9/30/2009	Rainy	26.5	86	60.0	8.8 *	E *
10/1/2009	Sunny	27.5	80.0	0.0	0-16 *	-
10/2/2009	Sunny	28.0	73.0	0.0	0-17 *	-
10/3/2009	Sunny	27.7	71.0	0.0	0-12 *	-
10/4/2009	Sunny	28.0	57.0	0.0	0-21 *	N *
10/5/2009	Sunny	28.1	51.0	0.0	0-18 *	NE *
10/6/2009	Sunny	28.4	57.0	0.0	0-18	SE
10/7/2009	Rainy	27.7	70.0	25.4	0-17	NE
10/8/2009	Sunny	26.2	72.0	0.0	-	-
10/9/2009	Sunny	26.6	66.0	0.0	-	-
10/10/2009	Sunny	26.8	66.0	0.0	-	-
10/11/2009	Rainy	25.9	80.0	5.1	8-33	NE
10/12/2009	Rainy	25.3	84.0	1.5	15-32	E
10/13/2009	Sunny	26.7	78.0	0.0	7-29	E

\* king's park data  
 - data were not available

Meteorological Data Extracted from the Hong Kong Observatory

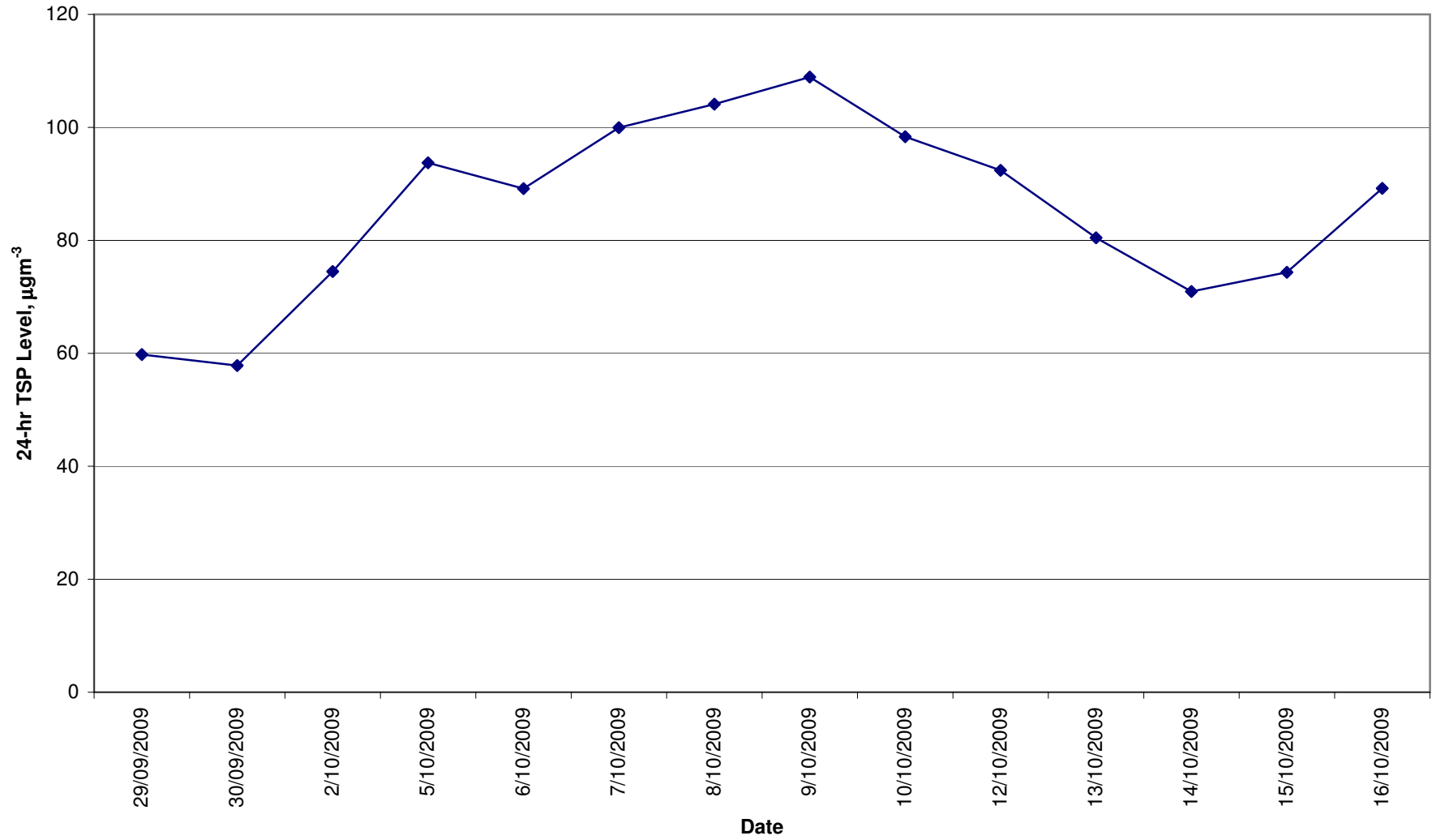
Date	Weather	Tsing Yi Station				
		Average Air Temperature (°C) *	Average Relative Humidity (%) *	Total Rainfall (mm) *	Average Wind Speed (km/h)	Wind Direction
10/9/2009	Sunny	26.6	66	0.0	-	-
10/10/2009	Sunny	26.8	66	0.0	-	-
10/11/2009	Rainy	25.9	80.0	5.1	2-11	SE
10/12/2009	Rainy	25.3	84.0	1.5	5-22	SE
10/13/2009	Rainy	26.7	78.0	Trace	1-22	E
10/14/2009	Rainy	25.6	87.0	9.5	0-19	SE
10/15/2009	Sunny	25.6	78.0	0.0	2-18	S
10/16/2009	Rainy	25.8	79.0	Trace	0-17	SE
10/17/2009	Sunny	26.5	74.0	0.0	3-20	SE
10/18/2009	Sunny	26.0	71.0	0.0	4-23	E
10/19/2009	Rainy	25.8	83.0	2.0	5-23	SE
10/20/2009	Rainy	24.5	83.0	0.9	1-19	SE
10/21/2009	Sunny	24.9	78.0	0.0	0-15	SE
10/22/2009	Sunny	25.7	74.0	0.0	0-13	SE
10/23/2009	Sunny	26.3	66.0	0.0	0-13	SE
10/24/2009	Sunny	26.2	71.0	0.0	0-14	SE

\* king's park data  
 - data were not available

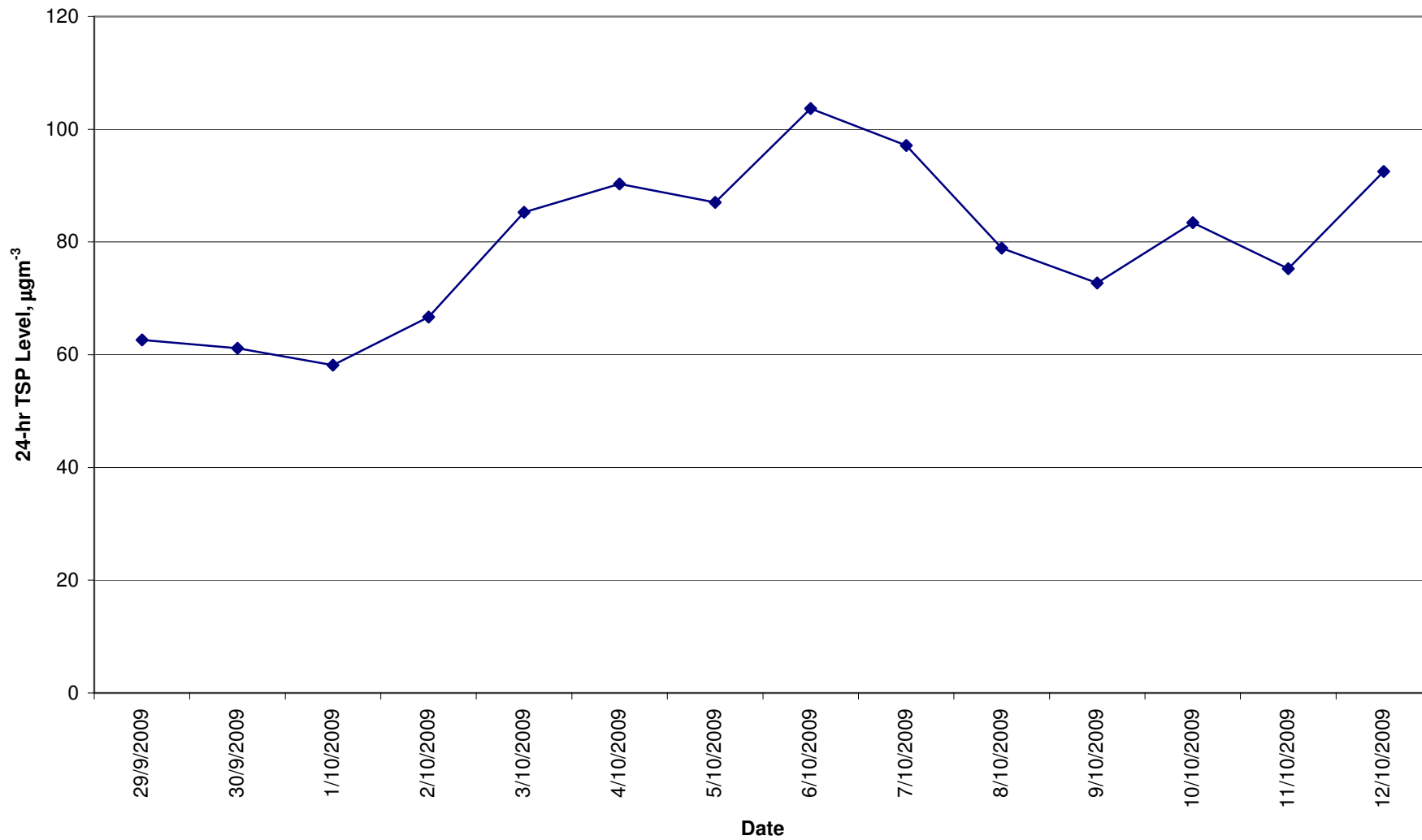
Date	Weather	Green Island Station				
		Average Air Temperature (°C) *	Average Relative Humidity (%) *	Total Rainfall (mm) *	Average Wind Speed (km/h)	Wind Direction
9/25/2009	Sunny	28.7	72	0.0	13.3 *	SE *
9/26/2009	Sunny	29.1	73	0.0	8.0# *	SE *
9/27/2009	Sunny	29.0#	70#	0.0#	-	-
9/28/2009	Rainy	25.3#	88#	53.5#	11.3# *	NE *
9/29/2009	Rainy	25.3	85	34.0	14.0 *	NE *
9/30/2009	Rainy	26.5	86	60.0	8.8 *	E *
10/1/2009	Sunny	27.5	80.0	0.0	0-16 *	-
10/2/2009	Rainy	28.0	73.0	Trace	0-17 *	-
10/3/2009	Sunny	27.7	71.0	0.0	0-12 *	-
10/4/2009	Sunny	28.0	57.0	0.0	0-21 *	N *
10/5/2009	Sunny	28.1	51.0	0.0	0-18 *	NE *
10/6/2009	Sunny	28.4	57.0	0.0	12-27	S
10/7/2009	Rainy	27.7	70.0	25.4	1-29	SE
10/8/2009	Sunny	26.2	72.0	0.0	-	-
10/9/2009	Sunny	26.6	66.0	0.0	-	-

\* king's park data  
 - data were not available  
 # less than 24 hourly observations per day

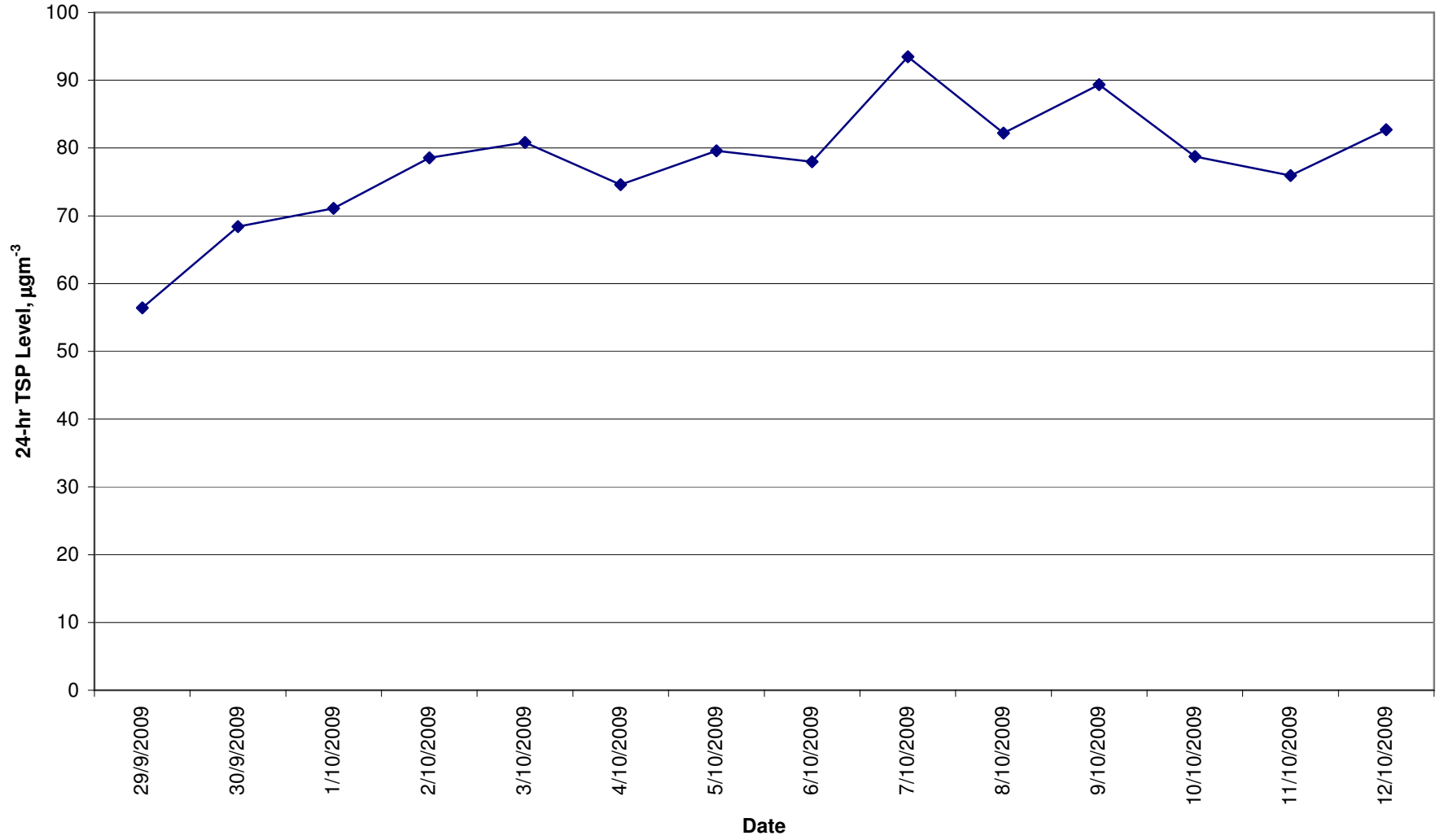
**Baseline 24-hr TSP Levels  
AM1 (Chan's Creative School)**



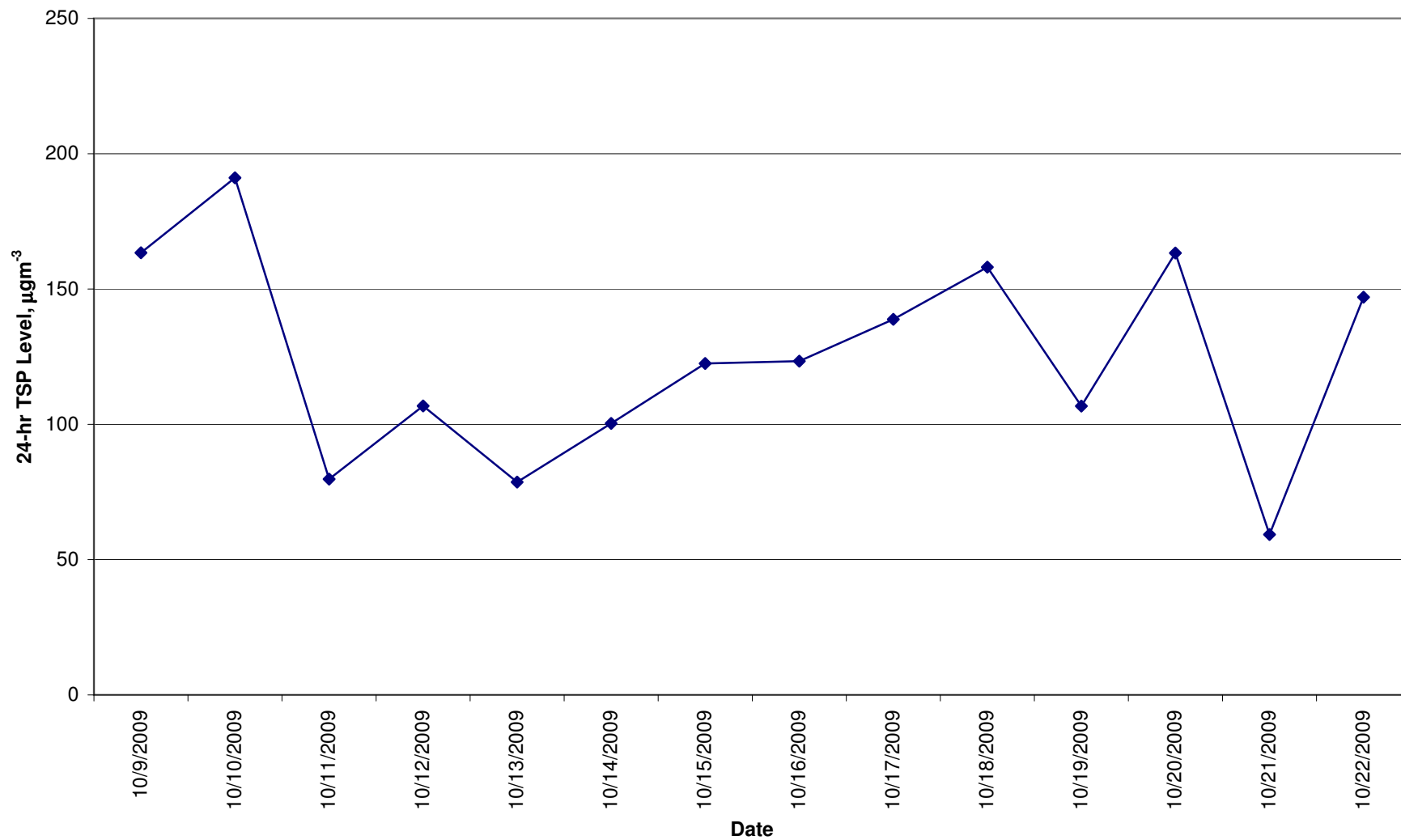
**Baseline 24-hr TSP Levels  
AM2 (Hong Kong & Island Regional Office, WSD)**



**Baseline 24-hr TSP Level  
AM3 (Wan Chai East PTW)**

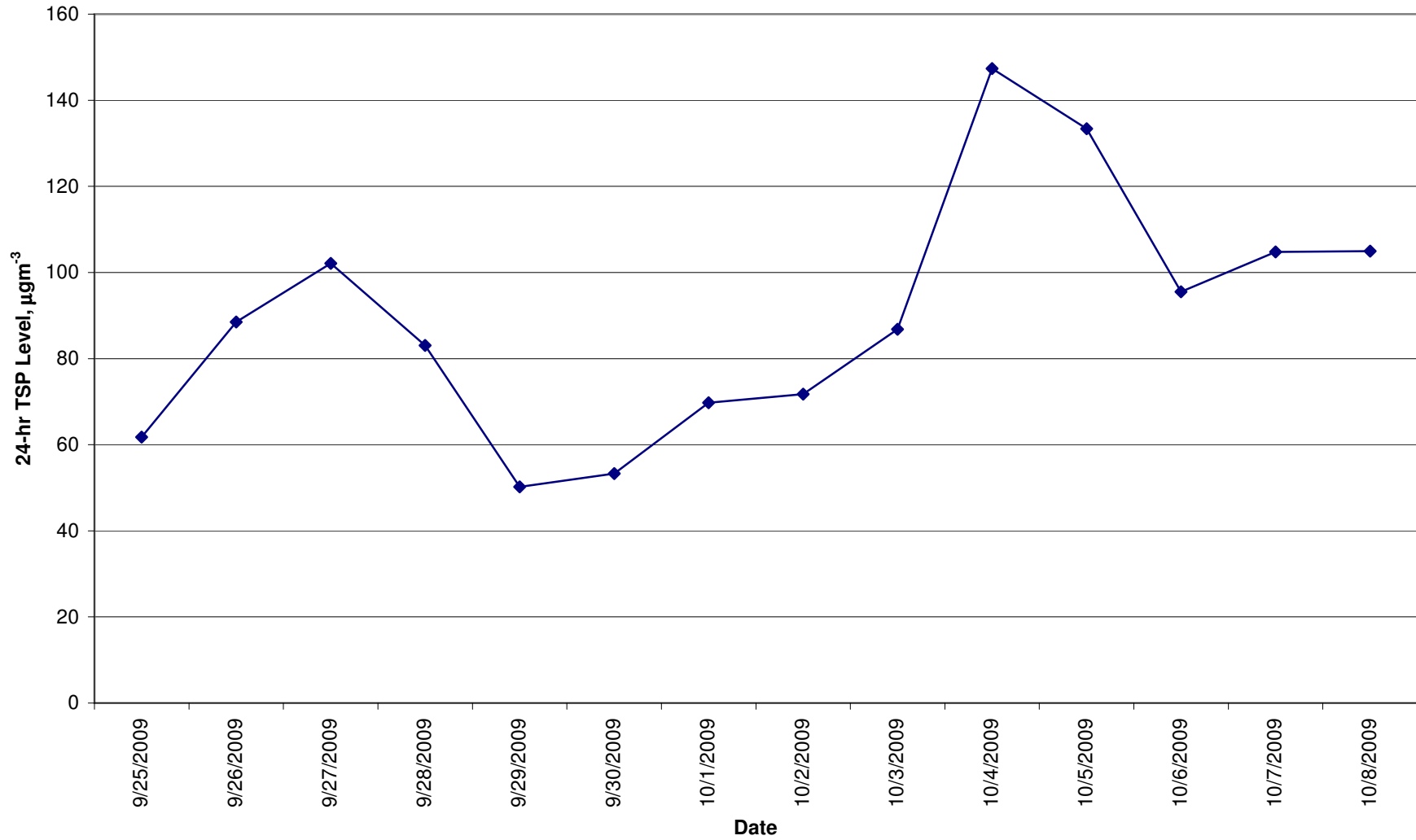


**Baseline 24-hr TSP Level  
AM4 (A Location within DSD Central PTW )**

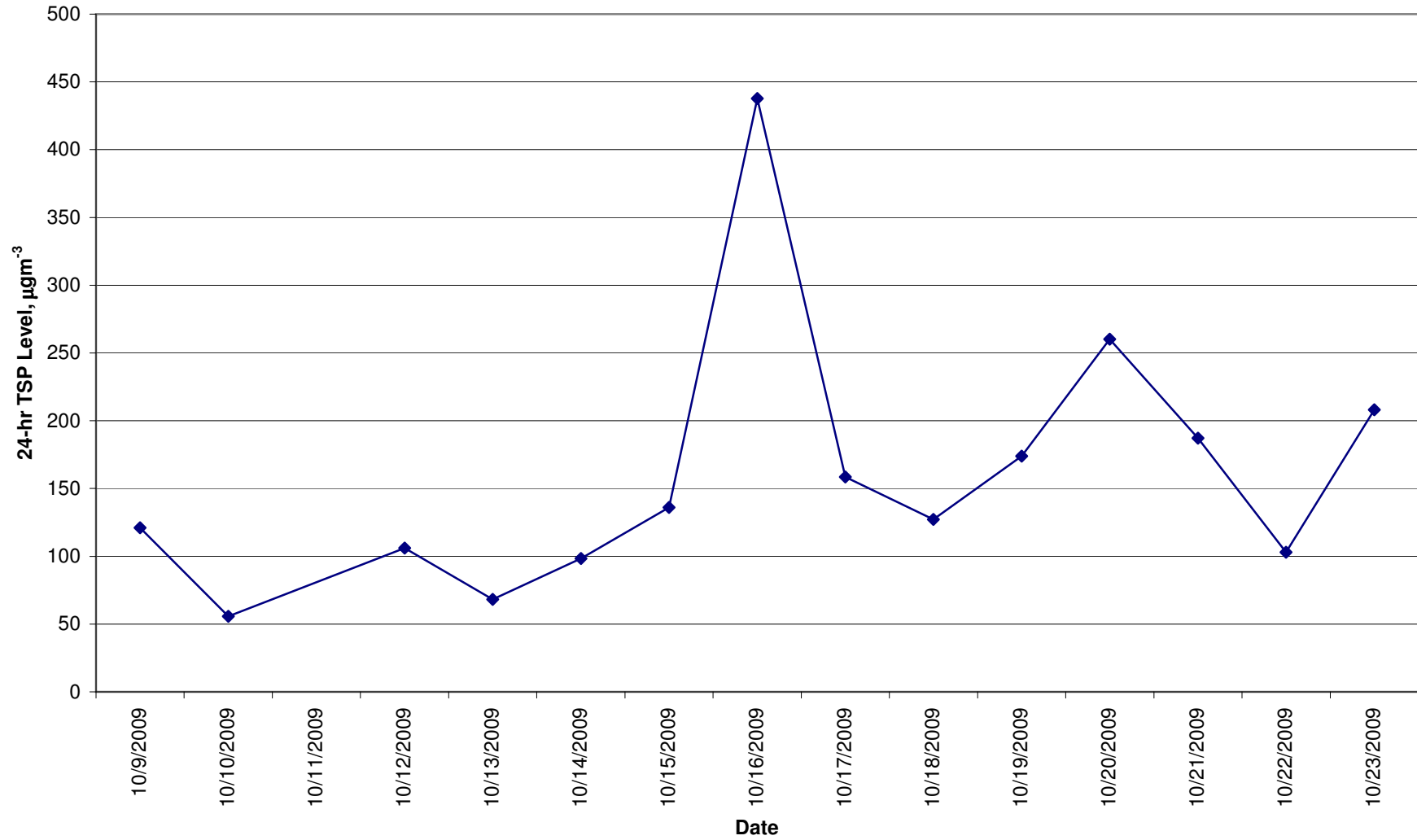




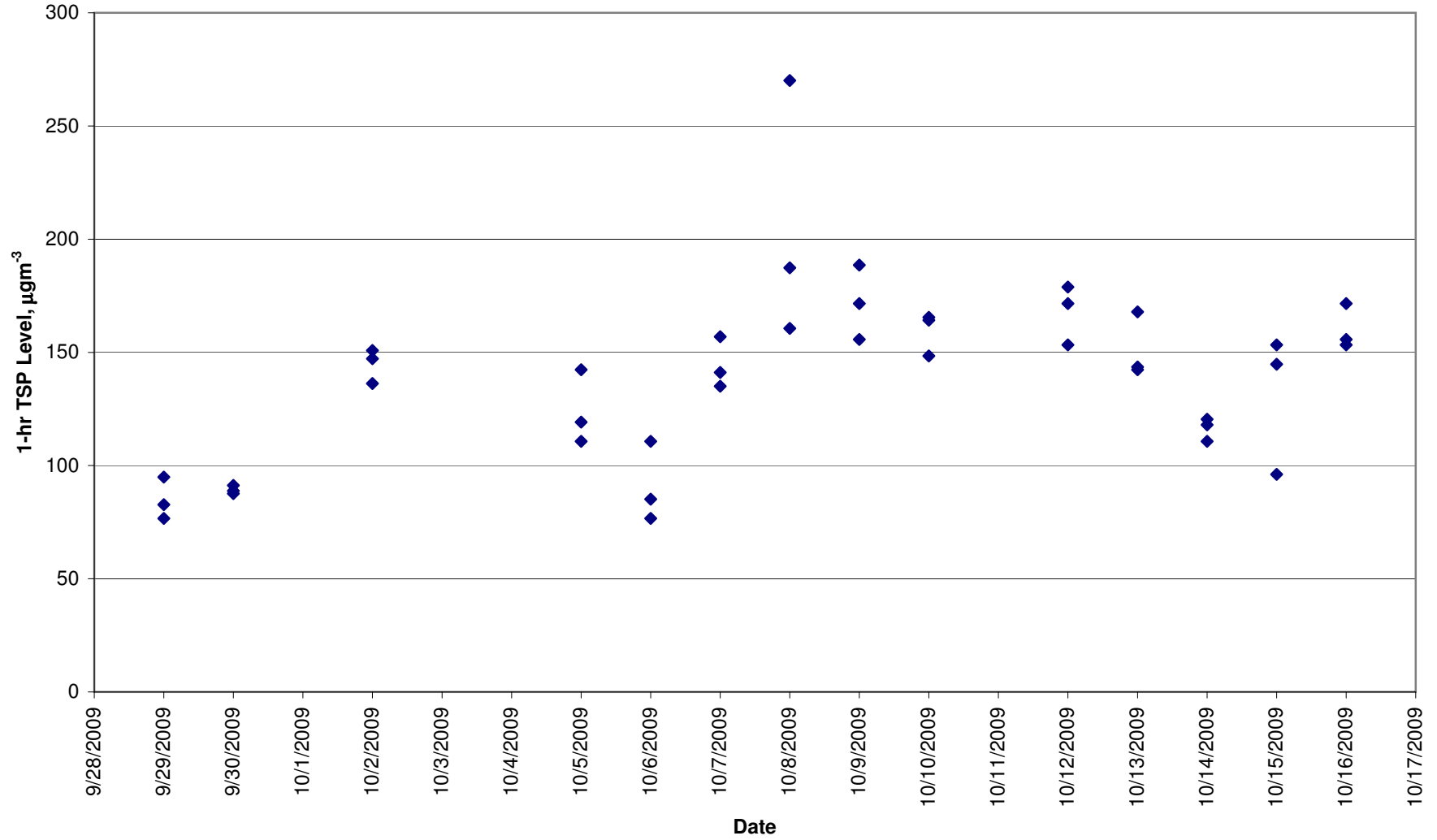
**Baseline 24-hr TSP Level  
AM5 (AFCD Western Wholesale Food Market)**



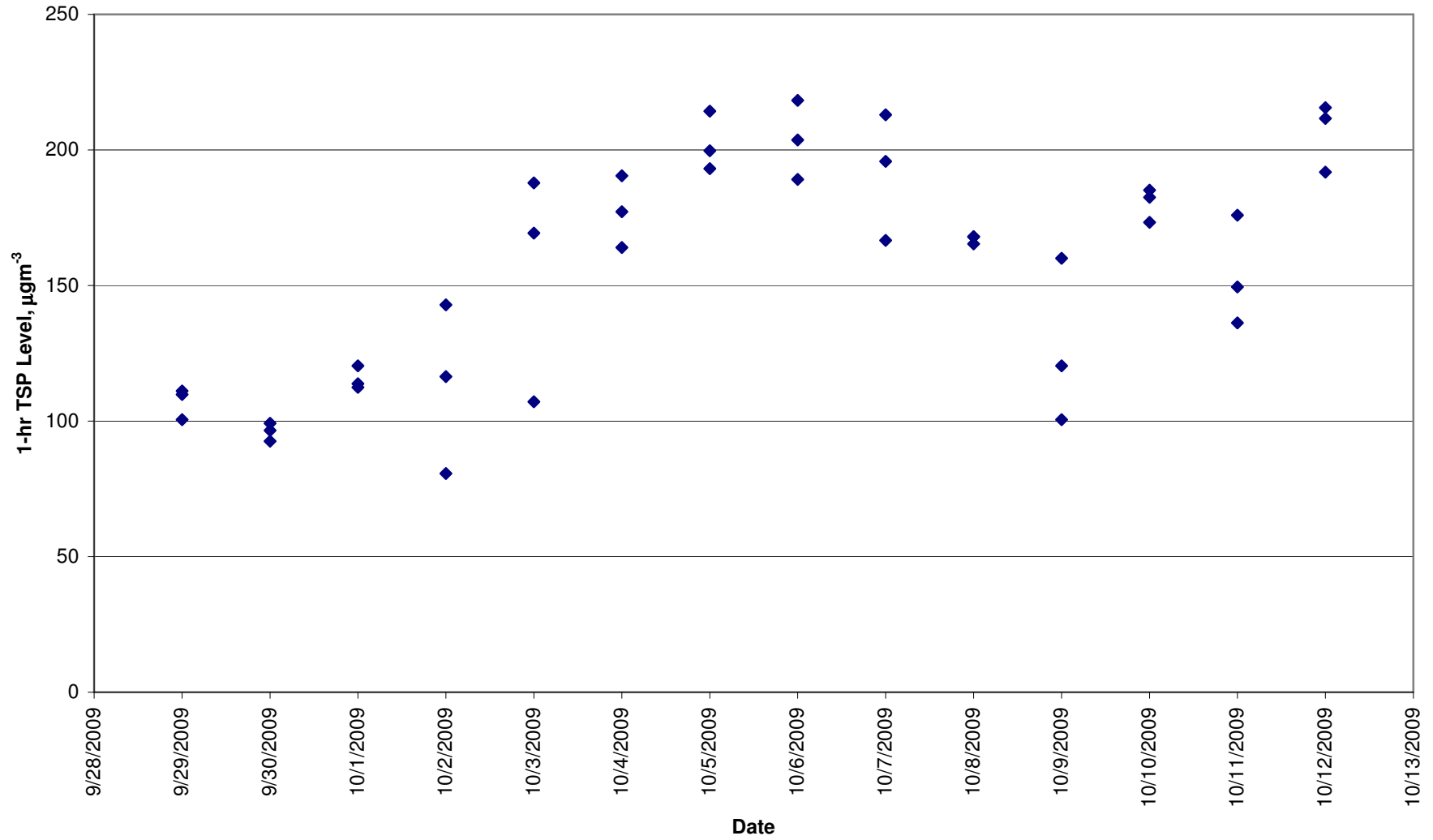
**Baseline 24-hr TSP Level**  
**AM6 (Work Site Boundary - Stonecutters Island Sewage Treatment Works)**



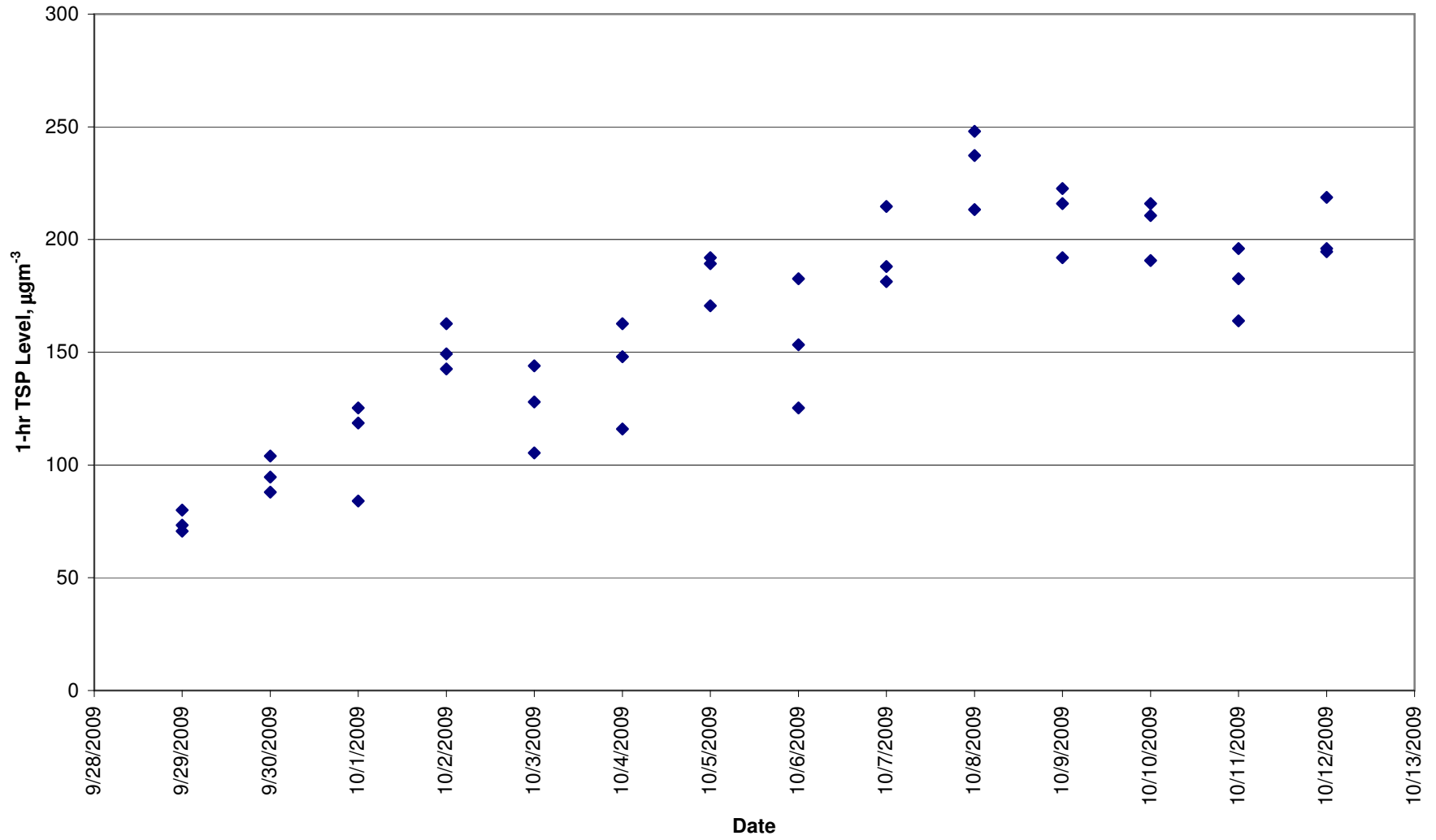
**Baseline 1-hr TSP Levels  
AM1 (Chan's Creative School)**



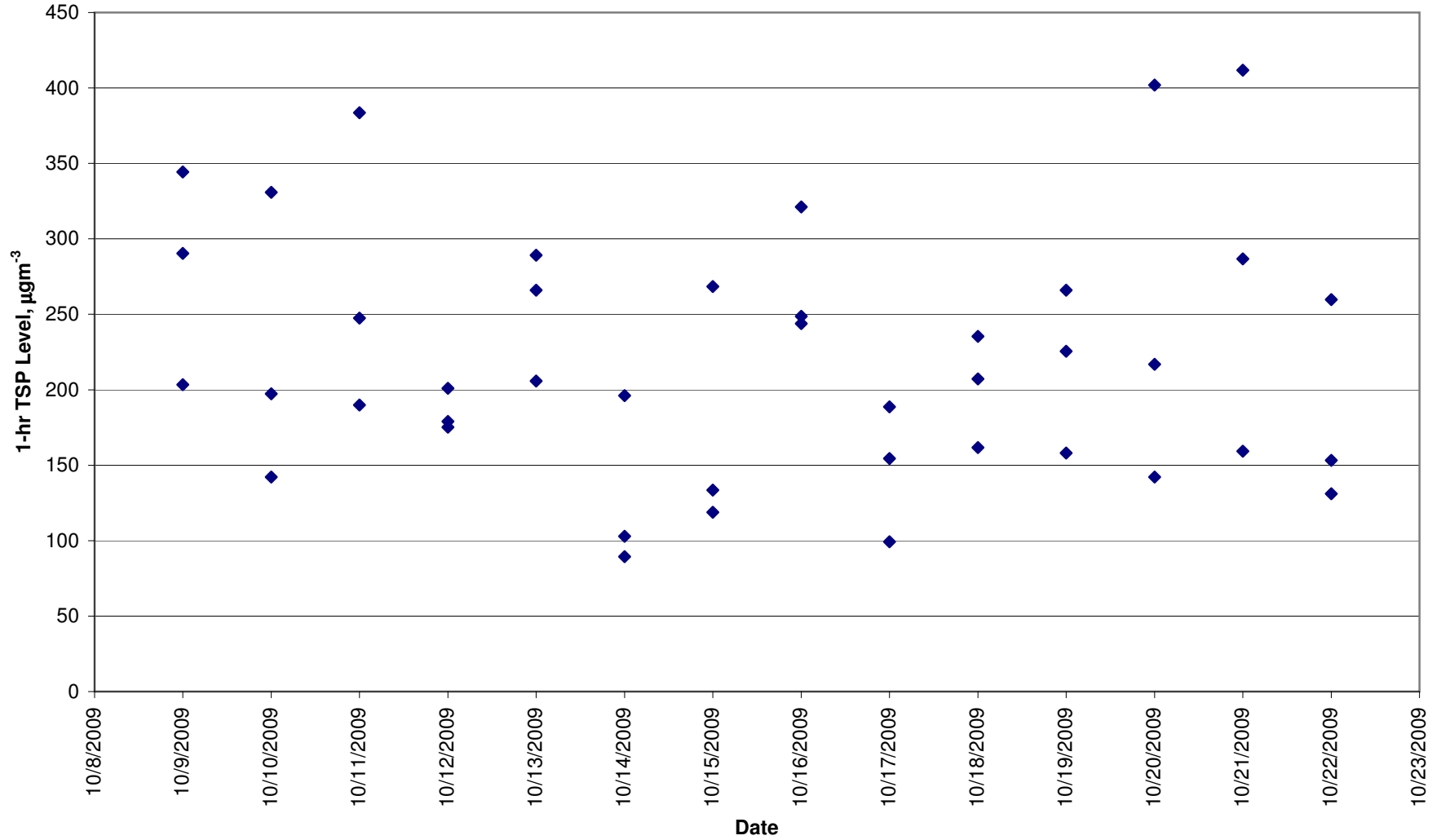
**Baseline 1-hr TSP Levels  
AM2 (Hong Kong & Island Regional Office, WSD)**



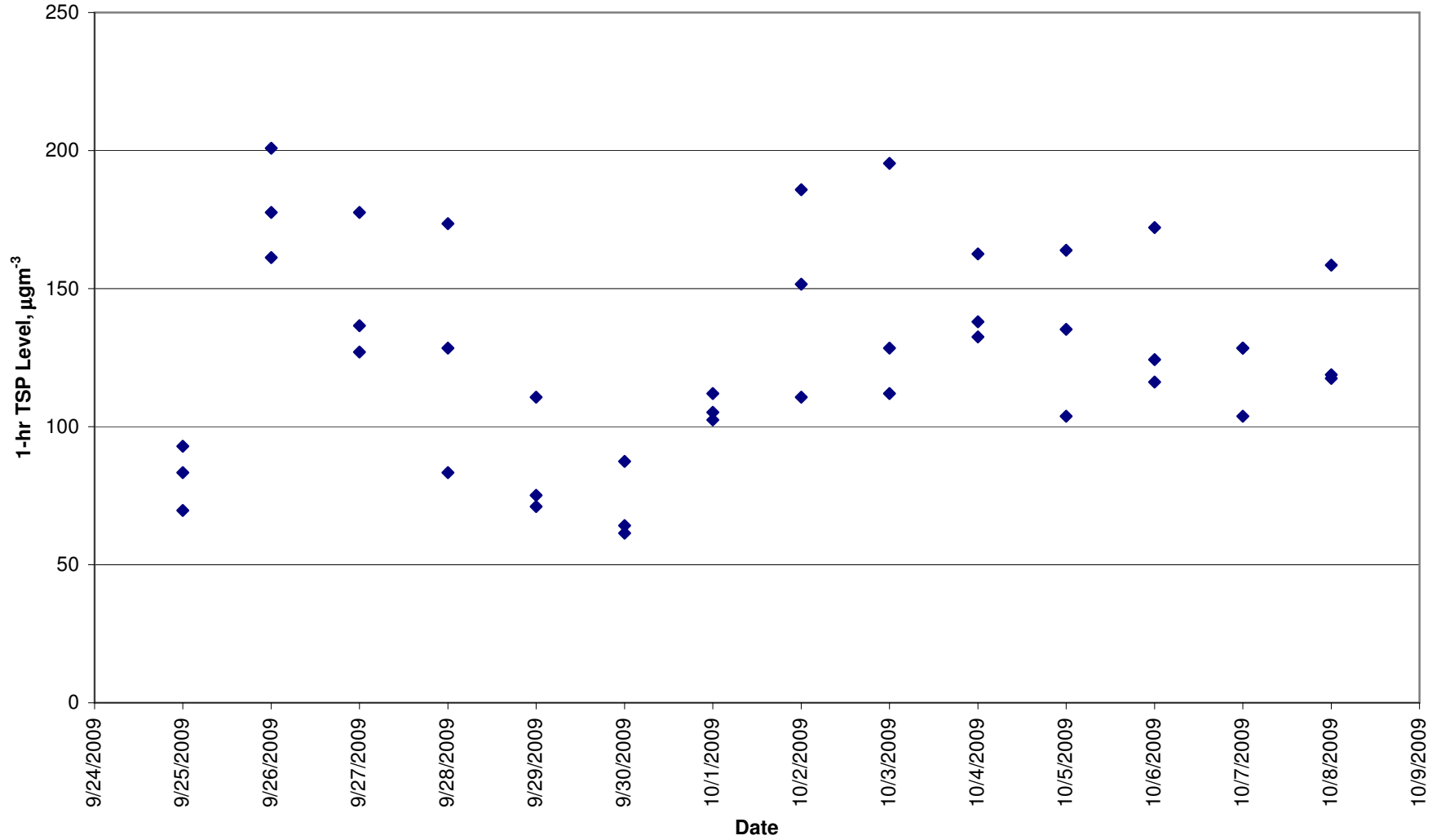
**Baseline 1-hr TSP Level  
AM3 (Wan Chai East PTW)**



**Baseline 1-hr TSP Level  
AM4 (A Location within DSD Central PTW)**



**Baseline 1-hr TSP Level  
AM5 (AFCD Western Wholesale Food Market)**



**Baseline 1-hr TSP Level  
AM6 (Stonecutters Island Sewage Treatment Works)**

