

Water Quality Monitoring Results at CE - Mid-Ebb Tide

Date	Weather Condition	Sea Condition**	Sampling Time	Depth (m)		Water Temperature (°C)		pH		Salinity ppt		DO Saturation (%)		Dissolved Oxygen (mg/L)			Turbidity(NTU)			Suspended Solids (mg/L)		
						Value	Average	Value	Average	Value	Average	Value	Average	Value	Average	DA*	Value	Average	DA*	Value	Average	DA*
2-Sep-09	Sunny	Calm	11:49	Surface	1	29.6 29.4	29.5	7.5 7.6	7.6	33.1 33.2	33.2	94.1 93.4	93.8	6.5 6.5	6.5	6.4	5.0 5.2	5.1	5.6	5.0 5.0	5.0	8.0
				Middle	5.5	29.2 29.1	29.2	7.5 7.6	7.6	32.9 32.8	32.9	91.3 91.4	91.4	6.3 6.3	6.3		5.4 5.2	5.3		7.0 7.0	7.0	
				Bottom	10	29.0 29.0	29.0	7.9 7.6	7.8	33.3 33.5	33.4	91.1 91.1	91.1	6.3 6.3	6.3		6.4 6.3	6.4		12.0 12.0	12.0	
4-Sep-09	Fine	Calm	13:10	Surface	1	27.9 27.8	27.9	8.4 8.0	8.2	34.0 34.0	34.0	98.5 97.4	98.0	7.2 7.0	7.1	7.3	2.0 2.4	2.2	3.0	13.0 13.0	13.0	10.2
				Middle	5.5	27.9 27.7	27.8	8.1 7.2	7.7	34.1 34.2	34.2	102.2 105.7	104.0	7.3 7.7	7.5		3.2 2.9	3.1		8.0 8.0	8.0	
				Bottom	10	27.9 27.7	27.8	7.5 7.1	7.3	33.9 34.0	34.0	105.3 102.5	103.9	7.7 7.4	7.6		3.6 3.7	3.7		9.0 10.0	9.5	
7-Sep-09	Sunny	Calm	13:43	Surface	1	29.7 29.7	29.7	8.0 8.2	8.1	32.7 32.9	32.8	92.7 91.6	92.2	6.8 6.7	6.8	6.8	2.2 2.2	2.2	2.8	7.0 7.0	7.0	9.3
				Middle	5	29.6 29.6	29.6	7.8 7.9	7.9	33.6 33.7	33.7	91.6 91.6	91.6	6.7 6.7	6.7		2.9 2.9	2.9		9.0 9.0	9.0	
				Bottom	9	29.6 29.6	29.6	8.1 8.1	8.1	33.9 33.2	33.6	91.2 91.3	91.3	6.6 6.6	6.6		3.2 3.2	3.2		12.0 12.0	12.0	
9-Sep-09	Cloudy	Calm	15:51	Surface	1	27.8 27.8	27.8	7.7 7.5	7.6	34.1 33.9	34.0	98.5 97.2	97.9	7.2 7.2	7.2	7.4	2.6 2.3	2.5	3.3	9.0 9.0	9.0	9.2
				Middle	5.5	27.9 27.9	27.9	7.5 6.6	7.1	33.9 34.0	34.0	102.1 105.7	103.9	7.3 7.7	7.5		3.5 3.3	3.4		6.0 6.0	6.0	
				Bottom	10	27.9 27.8	27.9	7.1 6.4	6.8	34.0 34.0	34.0	105.4 102.5	104.0	7.8 7.5	7.7		3.9 4.3	4.1		13.0 12.0	12.5	
11-Sep-09	Cloudy	Calm	17:17	Surface	1	27.9 27.7	27.8	8.6 8.4	8.5	34.0 34.0	34.0	98.5 97.3	97.9	7.3 7.0	7.2	7.4	2.2 2.3	2.3	3.0	5.0 5.0	5.0	8.3
				Middle	5.5	27.8 27.8	27.8	8.2 8.0	8.0	33.9 34.0	34.0	102.0 105.7	103.9	7.5 7.7	7.6		3.0 3.0	3.0		10.0 10.0	10.0	
				Bottom	10	27.8 27.7	27.8	7.7 7.4	7.7	34.0 34.1	34.1	105.3 102.3	103.8	7.7 7.4	7.6		3.9 3.6	3.8		10.0 10.0	10.0	
14-Sep-09	Cloudy	Moderate	09:11	Surface	1	27.9 27.7	27.8	8.9 8.7	8.8	33.9 34.0	34.0	95.1 93.9	94.5	6.9 6.8	6.9	7.1	2.1 2.1	2.1	3.0	9.0 9.0	9.0	9.7
				Middle	5.5	27.8 27.7	27.8	8.5 8.0	8.3	34.1 34.0	34.1	98.7 102.2	100.5	7.0 7.5	7.3		3.4 3.1	3.3		9.0 9.0	9.0	
				Bottom	10	27.7 27.8	27.8	8.2 7.9	8.1	34.0 34.0	34.0	102.0 98.9	100.5	7.4 7.0	7.2		3.7 3.7	3.7		11.0 11.0	11.0	
16-Sep-09	Rainy	Calm	11:15	Surface	1	27.8 27.9	27.9	8.8 8.5	8.7	34.0 33.9	34.0	98.7 97.4	98.1	7.0 7.0	7.0	7.3	2.4 2.6	2.5	3.0	6.0 6.0	6.0	9.7
				Middle	5.5	27.7 27.8	27.8	8.4 7.8	8.1	34.0 33.9	34.0	102.0 105.6	103.8	7.3 7.7	7.5		2.4 2.6	2.5		13.0 13.0	13.0	
				Bottom	10	27.8 27.7	27.8	8.0 7.4	7.7	33.9 34.2	34.1	105.3 102.4	103.9	7.5 7.4	7.5		3.6 4.2	3.9		10.0 10.0	10.0	
18-Sep-09	Sunny	Calm	11:46	Surface	1	28.0 28.0	28.0	7.7 6.9	7.3	30.2 30.2	30.2	103.4 101.9	102.7	6.8 6.7	6.8	6.4	3.2 3.4	3.3	4.1	9.0 9.0	9.0	9.8
				Middle	5.5	27.2 27.1	27.2	8.3 8.4	8.4	30.6 30.6	30.6	91.2 87.9	89.6	6.1 5.9	6.0		3.9 4.3	4.1		10.0 10.0	10.0	
				Bottom	10	26.9 27.0	27.0	7.1 8.0	7.6	30.7 30.7	30.7	88.7 88.0	88.4	6.2 6.1	6.2		4.9 4.7	4.8		10.0 11.0	10.5	

Water Quality Monitoring Results at CE - Mid-Ebb Tide

Date	Weather Condition	Sea Condition**	Sampling Time	Depth (m)		Water Temperature (°C)		pH		Salinity ppt		DO Saturation (%)		Dissolved Oxygen (mg/L)			Turbidity(NTU)			Suspended Solids (mg/L)		
						Value	Average	Value	Average	Value	Average	Value	Average	Value	Average	DA*	Value	Average	DA*	Value	Average	DA*
21-Sep-09	Cloudy	Calm	14:49	Surface	1	27.7 27.9	27.8	9.1 8.6	8.9	34.0 33.9	34.0	90.6 89.2	89.9	6.4 6.3	6.4	6.6	2.5 2.4	2.5	3.0	9.0 9.0	9.0	10.0
				Middle	5.5	27.7 27.7	27.7	8.7 7.8	8.3	34.0 34.0	34.0	94.0 97.6	95.8	6.7 6.8	6.8		2.9 3.0	3.0		10.0 10.0	10.0	
				Bottom	10	27.7 27.7	27.7	8.3 7.6	8.0	34.0 33.9	34.0	97.5 94.5	96.0	7.0 6.6	6.8		6.8	3.6 3.6		3.6	11.0 11.0	
23-Sep-09	Fine	Calm	16:01	Surface	1	25.8 25.8	25.8	9.1 8.7	8.9	34.1 34.1	34.1	93.6 92.2	92.9	6.6 6.5	6.6	6.9	2.3 2.0	2.2	2.6	7.0 7.0	7.0	8.8
				Middle	5.5	25.9 25.7	25.8	8.5 7.8	8.2	34.2 33.9	34.1	97.0 100.5	98.8	6.9 7.2	7.1		2.7 2.7	2.7		6.0 7.0	6.5	
				Bottom	10	25.8 25.7	25.8	8.1 7.8	8.0	34.0 34.0	34.0	100.3 97.3	98.8	7.2 6.8	7.0		7.0	2.7 3.2		3.0	13.0 13.0	
25-Sep-09	Sunny	Calm	08:55	Surface	1	26.0 25.7	25.9	8.5 8.1	8.3	34.0 34.0	34.0	98.7 97.4	98.1	7.3 7.1	7.2	7.4	3.0 2.6	2.8	3.1	9.0 9.0	9.0	10.8
				Middle	5.5	25.8 25.9	25.9	8.0 7.4	7.7	34.0 34.2	34.1	102.0 105.7	103.9	7.5 7.5	7.5		2.7 3.0	2.9		14.0 14.0	14.0	
				Bottom	10	26.0 25.8	25.9	7.8 7.3	7.6	33.9 34.1	34.0	105.5 102.4	104.0	7.6 7.3	7.5		7.5	3.4 3.5		3.5	9.0 10.0	
28-Sep-09	Rainy	Calm	09:03	Surface	1	26.0 26.0	26.0	8.3 7.9	8.1	33.9 34.1	34.0	98.5 97.2	97.9	7.2 7.0	7.1	7.4	2.0 2.0	2.0	2.8	12.0 12.0	12.0	10.5
				Middle	5.5	25.8 25.9	25.9	8.0 7.3	7.7	34.0 34.1	34.1	102.2 105.7	104.0	7.5 7.6	7.6		2.4 2.8	2.6		13.0 13.0	13.0	
				Bottom	10	25.8 25.7	25.8	7.4 7.0	7.2	34.1 34.1	34.1	105.4 102.3	103.9	7.7 7.5	7.6		7.6	4.0 3.5		3.8	6.0 7.0	
30-Sep-09	Rainy	Calm	09:42	Surface	1	27.8 27.8	27.8	48.4 48.4	48.4	31.5 31.0	31.3	92.8 91.9	92.4	6.9 6.9	6.9	6.9	2.6 2.7	2.7	2.9	10.0 10.0	10.0	9.5
				Middle	5	27.8 27.8	27.8	50.4 49.6	50.0	32.1 32.4	32.3	90.8 90.7	90.8	6.8 6.8	6.8		2.4 2.4	2.4		9.0 9.0	9.0	
				Bottom	9	27.8 27.8	27.8	52.1 51.7	51.9	32.7 32.7	32.7	84.0 82.9	83.5	6.4 6.3	6.4		6.4	3.5 3.6		3.6	9.0 10.0	

Remarks: The reporting limit for laboratory analysis of suspended solids is 2.5 mg/L. For the results below the reporting limit, the SS level will be taken as 2.5 mg/L.

* DA: Depth-Averaged

** Calm: Small or no wave; Moderate: Between calm and rough; Rough : White capped or rougher

Water Quality Monitoring Results at CF - Mid-Flood Tide

Date	Weather Condition	Sea Condition**	Sampling Time	Depth (m)		Water Temperature (°C)		pH		Salinity ppt		DO Saturation (%)		Dissolved Oxygen (mg/L)			Turbidity(NTU)			Suspended Solids (mg/L)					
						Value	Average	Value	Average	Value	Average	Value	Average	Value	Average	Value	Average	DA*	Value	Average	DA*	Value	Average	DA*	
2-Sep-09	Fine	Calm	16:55	Surface	1	29.6 29.6	29.6	7.6 7.6	7.6	33.4 33.4	33.4	100.7 100.3	100.5	7.0 7.0	7.0	7.0	5.3 5.3	5.3	5.4	7.0 7.0	7.0	6.5			
				Middle	-	-	-	-	-	-	-	-	-	-	-		-	-		-	-		-	-	-
				Bottom	3	29.4 29.3	29.4	7.6 8.1	7.9	32.9 32.9	32.9	95.0 95.0	95.0	6.6 6.6	6.6		6.6	5.3 5.4		5.4	6.0 6.0		6.0		
4-Sep-09	Fine	Calm	17:03	Surface	1	27.7 27.9	27.8	7.4 8.0	7.7	33.3 33.4	33.4	98.9 100.4	99.7	6.9 7.1	7.0	7.0	1.6 1.6	1.6	2.1	7.0 7.0	7.0	10.0			
				Middle	-	-	-	-	-	-	-	-	-	-	-		-	-		-	-		-	-	-
				Bottom	3	27.8 27.8	27.8	8.4 8.0	8.2	33.7 33.6	33.7	92.6 98.3	95.5	6.3 6.8	6.6		6.6	2.5 2.6		2.6	13.0 13.0		13.0		
7-Sep-09	Sunny	Calm	08:44	Surface	1	27.2 27.2	27.2	7.8 7.8	7.8	31.6 31.5	31.6	101.9 101.0	101.5	7.3 7.2	7.3	7.3	2.8 2.8	2.8	3.0	6.0 6.0	6.0	8.0			
				Middle	-	-	-	-	-	-	-	-	-	-	-		-	-		-	-		-	-	-
				Bottom	3	27.2 27.2	27.2	7.9 8.0	8.0	33.1 32.5	32.8	99.8 99.7	99.8	7.2 7.2	7.2		7.2	3.0 3.1		3.1	10.0 10.0		10.0		
9-Sep-09	Cloudy	Calm	09:04	Surface	1	27.7 27.8	27.8	6.8 7.2	7.0	33.4 33.3	33.4	98.8 100.4	99.6	6.9 6.9	6.9	6.9	1.2 1.2	1.2	1.7	7.0 7.0	7.0	9.8			
				Middle	-	-	-	-	-	-	-	-	-	-	-		-	-		-	-		-	-	-
				Bottom	3	27.6 27.7	27.7	7.6 7.4	7.5	33.7 33.6	33.7	92.8 98.3	95.6	6.4 6.7	6.6		6.6	2.1 2.2		2.2	13.0 12.0		12.5		
11-Sep-09	Cloudy	Calm	11:23	Surface	1	27.8 27.7	27.8	7.8 8.1	8.0	33.4 33.3	33.4	110.0 111.5	110.8	7.9 8.1	8.0	8.0	1.7 1.7	1.7	1.9	6.0 7.0	6.5	11.3			
				Middle	-	-	-	-	-	-	-	-	-	-	-		-	-		-	-		-	-	-
				Bottom	3	27.6 27.7	27.7	8.5 8.4	8.5	33.6 33.6	33.6	103.7 109.1	106.4	7.3 7.7	7.5		7.5	2.0 2.1		2.1	16.0 16.0		16.0		
16-Sep-09	Rainy	Calm	17:03	Surface	1	27.7 27.9	27.8	7.9 8.1	8.0	33.3 33.3	33.3	114.8 116.4	115.6	8.5 8.5	8.5	8.5	2.1 2.1	2.1	2.4	10.0 10.0	10.0	9.5			
				Middle	-	-	-	-	-	-	-	-	-	-	-		-	-		-	-		-	-	-
				Bottom	3	27.6 27.8	27.7	8.8 8.5	8.7	33.5 33.5	33.5	108.8 114.1	111.5	7.8 8.3	8.1		8.1	2.6 2.6		2.6	9.0 9.0		9.0		
18-Sep-09	Fine	Calm	17:10	Surface	1	27.9 28.0	28.0	7.4 7.7	7.6	30.4 30.4	30.4	96.2 95.9	96.1	6.4 6.3	6.4	6.4	2.7 2.6	2.7	3.0	7.0 7.0	7.0	8.5			
				Middle	-	-	-	-	-	-	-	-	-	-	-		-	-		-	-		-	-	-
				Bottom	3	27.9 27.9	27.9	8.1 7.8	8.0	30.4 30.4	30.4	95.2 95.0	95.1	6.3 6.3	6.3		6.3	3.2 3.1		3.2	10.0 10.0		10.0		
21-Sep-09	Cloudy	Calm	08:02	Surface	1	27.7 27.9	27.8	8.0 8.4	8.2	33.2 33.4	33.3	107.0 108.6	107.8	7.5 7.6	7.6	7.6	1.9 1.9	1.9	2.1	16.0 16.0	16.0	13.5			
				Middle	-	-	-	-	-	-	-	-	-	-	-		-	-		-	-		-	-	-
				Bottom	3	27.8 27.8	27.8	8.9 8.5	8.7	33.8 33.6	33.7	100.6 106.3	103.5	7.2 7.4	7.3		7.3	2.2 2.4		2.3	11.0 11.0		11.0		
23-Sep-09	Fine	Calm	09:27	Surface	1	25.7 25.7	25.7	8.0 8.5	8.3	33.4 33.4	33.4	102.8 104.6	103.7	7.3 7.2	7.3	7.3	1.5 1.6	1.6	2.3	14.0 14.0	14.0	10.5			
				Middle	-	-	-	-	-	-	-	-	-	-	-		-	-		-	-		-	-	-
				Bottom	3	25.7 25.8	25.8	8.8 8.6	8.7	33.7 33.7	33.7	96.6 102.2	99.4	6.7 7.3	7.0		7.0	2.9 2.9		2.9	7.0 7.0		7.0		
30-Sep-09	Rainy	Calm	16:24	Surface	1	29.2 29.1	29.2	51.6 52.2	51.9	33.0 33.2	33.1	84.4 84.4	84.4	6.4 6.4	6.4	6.4	2.7 2.8	2.8	3.4	13.0 14.0	13.5	13.0			
				Middle	-	-	-	-	-	-	-	-	-	-	-		-	-		-	-		-	-	-
				Bottom	3	29.1 29.1	29.1	52.5 52.4	52.5	33.3 32.6	33.0	82.5 82.6	82.6	6.3 6.3	6.3		6.3	3.8 3.9		3.9	12.0 13.0		12.5		

Remarks: The reporting limit for laboratory analysis of suspended solids is 2.5 mg/L. For the results below the reporting limit, the SS level will be taken as 2.5 mg/L.
 * DA: Depth-Averaged
 ** Calm: Small or no wave; Moderate: Between calm and rough; Rough : White capped or rougher

Water Quality Monitoring Results at I1 - Mid-Ebb Tide

Date	Weather Condition	Sea Condition**	Sampling Time	Depth (m)	Water Temperature (°C)		pH		Salinity ppt		DO Saturation (%)		Dissolved Oxygen (mg/L)			Turbidity(NTU)			Suspended Solids (mg/L)			
					Value	Average	Value	Average	Value	Average	Value	Average	Value	Average	DA*	Value	Average	DA*	Value	Average	DA*	
2-Sep-09	Sunny	Calm	11:31	Surface	1	30.2 30.2	30.2	8.2 7.6	7.9	32.7 32.7	32.7	93.9 93.4	93.7	6.4 6.4	6.4	6.4	4.7 4.8	4.8	5.4	13.0 13.0	13.0	9.0
				Middle	4.5	29.6 29.6	29.6	8.0 8.2	8.1	32.9 33.0	33.0	93.1 92.5	92.8	6.4 6.3	6.4		5.4 5.6	5.5		4.0 4.0	4.0	
				Bottom	8	29.5 29.5	29.5	7.8 7.6	7.7	33.2 33.1	33.2	90.6 90.5	90.6	6.2 6.2	6.2		6.0 5.9	6.0		10.0 10.0	10.0	
4-Sep-09	Fine	Calm	12:43	Surface	1	27.8 27.8	27.8	7.7 6.8	7.3	33.9 34.0	34.0	91.1 90.5	90.8	6.4 6.6	6.5	6.8	2.1 2.1	2.1	2.8	13.0 13.0	13.0	11.7
				Middle	4.5	27.9 27.8	27.9	8.4 8.3	8.4	34.0 34.1	34.1	96.3 94.8	95.6	7.1 6.9	7.0		2.4 2.7	2.6		12.0 12.0	12.0	
				Bottom	8	27.8 27.9	27.9	7.3 8.1	7.7	34.0 33.9	34.0	86.1 95.1	90.6	6.3 6.9	6.6		3.8 3.4	3.6		10.0 10.0	10.0	
7-Sep-09	Sunny	Calm	13:52	Surface	1	29.9 29.8	29.9	8.1 7.9	8.0	31.2 31.2	31.2	92.1 92.1	92.1	6.7 6.7	6.7	6.7	2.1 2.1	2.1	3.2	5.0 5.0	5.0	8.3
				Middle	4	29.7 29.7	29.7	7.9 7.9	7.9	32.3 32.8	32.6	92.5 92.4	92.5	6.7 6.7	6.7		3.6 3.8	3.7		5.0 5.0	5.0	
				Bottom	7	29.6 29.6	29.6	7.9 7.8	7.9	33.1 33.7	33.4	94.1 93.3	93.7	6.9 6.8	6.9		3.8 3.9	3.9		15.0 15.0	15.0	
9-Sep-09	Cloudy	Calm	15:23	Surface	1	27.9 27.8	27.9	7.1 6.3	6.7	33.8 34.1	34.0	91.0 90.6	90.8	6.5 6.6	6.6	6.8	1.6 1.6	1.6	2.7	8.0 7.0	7.5	10.5
				Middle	4.5	27.9 27.8	27.9	7.7 7.6	7.7	33.9 34.0	34.0	96.2 94.7	95.5	6.9 6.8	6.9		3.1 2.7	2.9		12.0 12.0	12.0	
				Bottom	8	27.7 27.9	27.8	6.6 7.5	7.1	34.1 34.1	34.1	86.1 95.0	90.6	6.4 6.8	6.6		3.6 3.7	3.7		12.0 12.0	12.0	
11-Sep-09	Cloudy	Calm	16:50	Surface	1	27.8 27.7	27.8	8.1 7.3	7.7	34.0 34.0	34.0	91.2 90.6	90.9	6.5 6.6	6.6	6.8	2.8 2.3	2.6	3.1	7.0 7.0	7.0	7.8
				Middle	4.5	27.7 27.9	27.8	8.7 8.4	8.6	33.9 34.0	34.0	96.2 94.7	95.5	6.8 6.9	6.9		3.5 2.9	3.2		5.0 5.0	5.0	
				Bottom	8	27.7 27.8	27.8	7.5 8.3	7.9	33.9 34.1	34.0	86.2 95.0	90.6	6.2 7.0	6.6		3.3 3.9	3.6		12.0 11.0	11.5	
14-Sep-09	Cloudy	Moderate	08:44	Surface	1	27.7 27.8	27.8	8.3 7.7	8.0	33.9 34.0	34.0	87.6 87.2	87.4	6.4 6.2	6.3	6.4	2.3 2.0	2.2	3.1	10.0 10.0	10.0	9.3
				Middle	4.5	27.9 27.7	27.8	8.9 8.8	8.9	33.9 34.1	34.0	92.8 91.4	92.1	6.6 6.4	6.5		3.4 3.1	3.3		5.0 5.0	5.0	
				Bottom	8	27.7 27.9	27.8	7.7 8.7	8.2	34.1 33.9	34.0	82.6 91.8	87.2	5.8 6.4	6.1		3.8 3.5	3.7		13.0 13.0	13.0	
16-Sep-09	Rainy	Calm	10:48	Surface	1	27.8 27.9	27.9	8.1 7.2	7.7	33.9 34.0	34.0	91.0 90.5	90.8	6.7 6.5	6.6	6.8	1.6 2.0	1.8	3.1	8.0 8.0	8.0	6.7
				Middle	4.5	27.7 27.9	27.8	8.5 8.7	8.6	34.0 33.9	34.0	96.1 94.9	95.5	6.9 6.8	6.9		3.5 3.2	3.4		3.0 3.0	3.0	
				Bottom	8	27.7 27.8	27.8	7.4 8.3	7.9	34.1 34.1	34.1	86.2 95.0	90.6	6.3 6.8	6.6		4.3 3.6	4.0		9.0 9.0	9.0	
18-Sep-09	Sunny	Calm	11:32	Surface	1	27.9 27.9	27.9	7.4 7.8	7.6	30.2 30.2	30.2	101.7 97.2	99.5	6.7 6.5	6.6	6.4	2.5 2.6	2.6	3.0	13.0 13.0	13.0	11.3
				Middle	4.5	27.6 27.6	27.6	7.1 7.3	7.2	30.3 30.3	30.3	93.6 92.8	93.2	6.2 6.2	6.2		2.9 2.7	2.8		9.0 9.0	9.0	
				Bottom	8	27.3 27.3	27.3	7.7 7.8	7.8	30.4 30.5	30.5	91.9 90.4	91.2	6.2 6.1	6.2		3.2 3.8	3.5		12.0 12.0	12.0	

Water Quality Monitoring Results at I1 - Mid-Ebb Tide

Date	Weather Condition	Sea Condition**	Sampling Time	Depth (m)	Water Temperature (°C)		pH		Salinity ppt		DO Saturation (%)		Dissolved Oxygen (mg/L)			Turbidity(NTU)			Suspended Solids (mg/L)			
					Value	Average	Value	Average	Value	Average	Value	Average	Value	Average	DA*	Value	Average	DA*	Value	Average	DA*	
21-Sep-09	Cloudy	Calm	14:21	Surface	1	27.8 27.9	27.9	8.5 7.6	8.1	34.0 33.9	34.0	91.1 90.7	90.9	6.7 6.5	6.6	6.8	1.8 1.9	1.9	2.9	9.0 9.0	9.0	11.2
				Middle	4.5	27.8 27.7	27.8	8.9 8.8	8.9	33.9 33.9	33.9	96.2 94.9	95.6	7.1 6.9	7.0		2.9 3.0	3.0		11.0 11.0	11.0	
				Bottom	8	27.7 27.8	27.8	7.8 8.7	8.3	34.0 33.9	34.0	86.2 95.1	90.7	6.1 6.9	6.5		6.5	3.6 3.7		3.7	13.0 14.0	
23-Sep-09	Fine	Calm	15:34	Surface	1	25.9 25.7	25.8	8.5 7.5	8.0	33.9 34.0	34.0	91.0 90.6	90.8	6.5 6.5	6.5	6.7	1.5 1.6	1.6	2.5	12.0 12.0	12.0	8.7
				Middle	4.5	25.8 25.8	25.8	8.9 8.9	8.9	33.9 33.9	33.9	96.1 94.9	95.5	7.1 6.7	6.9		3.0 3.0	3.0		6.0 6.0	6.0	
				Bottom	8	25.7 25.9	25.8	7.7 8.7	8.2	33.9 34.1	34.0	86.1 95.1	90.6	6.2 6.9	6.6		6.6	3.1 2.9		3.0	8.0 8.0	
25-Sep-09	Sunny	Calm	08:27	Surface	1	25.9 25.8	25.9	7.8 7.0	7.4	33.9 34.1	34.0	91.1 90.7	90.9	6.7 6.5	6.6	6.8	2.5 2.4	2.5	3.4	12.0 11.0	11.5	7.5
				Middle	4.5	25.9 25.8	25.9	8.2 8.4	8.3	33.8 33.9	33.9	96.3 94.9	95.6	6.9 6.9	6.9		3.5 3.8	3.7		6.0 6.0	6.0	
				Bottom	8	25.7 25.9	25.8	7.3 8.1	7.7	34.0 34.1	34.1	86.1 95.0	90.6	6.2 7.0	6.6		6.6	3.7 4.0		3.9	5.0 5.0	
28-Sep-09	Rainy	Calm	08:36	Surface	1	25.7 26.0	25.9	7.8 7.0	7.4	34.0 33.9	34.0	91.1 90.6	90.9	6.6 6.5	6.6	6.8	1.8 1.6	1.7	3.0	14.0 14.0	14.0	11.0
				Middle	4.5	25.9 26.0	26.0	8.2 8.2	8.2	34.0 34.1	34.1	96.3 94.7	95.5	6.8 7.0	6.9		3.4 3.4	3.4		10.0 10.0	10.0	
				Bottom	8	25.9 25.7	25.8	6.9 7.8	7.4	34.1 33.9	34.0	86.2 95.2	90.7	6.3 6.8	6.6		6.6	3.4 4.2		3.8	9.0 9.0	
30-Sep-09	Rainy	Calm	09:52	Surface	1	27.8 27.8	27.8	50.6 50.8	50.7	29.9 29.8	29.9	83.8 84.0	83.9	6.4 6.4	6.4	6.4	3.4 3.6	3.5	3.1	10.0 10.0	10.0	11.2
				Middle	4	27.8 27.8	27.8	50.7 51.4	51.1	33.2 33.3	33.3	84.1 84.1	84.1	6.4 6.4	6.4		2.8 2.8	2.8		11.0 11.0	11.0	
				Bottom	7	27.6 27.6	27.6	51.3 51.4	51.4	33.2 33.4	33.3	84.0 84.0	84.0	6.4 6.4	6.4		6.4	3.1 2.9		3.0	13.0 12.0	

Remarks: The reporting limit for laboratory analysis of suspended solids is 2.5 mg/L. For the results below the reporting limit, the SS level will be taken as 2.5 mg/L.

* DA: Depth-Averaged

** Calm: Small or no wave; Moderate: Between calm and rough; Rough : White capped or rougher

Water Quality Monitoring Results at I1 - Mid-Flood Tide

Date	Weather Condition	Sea Condition**	Sampling Time	Depth (m)		Water Temperature (°C)		pH		Salinity ppt		DO Saturation (%)		Dissolved Oxygen (mg/L)			Turbidity(NTU)			Suspended Solids (mg/L)		
						Value	Average	Value	Average	Value	Average	Value	Average	Value	Average	DA*	Value	Average	DA*	Value	Average	DA*
2-Sep-09	Fine	Calm	16:31	Surface	1	29.7 29.7	29.7	7.5 7.5	7.5	32.4 32.4	32.4	94.5 94.5	94.5	6.5 6.5	6.5	6.5	4.5 4.5	4.5	4.8	4.0 5.0	4.5	6.5
				Middle	4.5	29.2 29.2	29.2	8.1 7.9	8.0	32.9 32.9	32.9	94.3 94.1	94.2	6.5 6.5	6.5		5.2 5.2	5.2		10.0 10.0	10.0	
				Bottom	8	29.1 29.1	29.1	7.7 7.9	7.8	33.5 33.4	33.5	93.4 93.1	93.3	6.5 6.4	6.5		4.5 4.8	4.7		5.0 5.0	5.0	
4-Sep-09	Fine	Calm	17:40	Surface	1	27.9 27.9	27.9	7.4 7.5	7.5	34.1 34.0	34.1	91.9 91.6	91.8	6.7 6.5	6.6	6.6	1.7 2.1	1.9	1.9	13.0 13.0	13.0	10.8
				Middle	4.5	27.7 27.8	27.8	7.5 7.7	7.6	33.9 34.0	34.0	86.4 92.8	89.6	6.4 6.8	6.6		1.4 1.4	1.4		13.0 13.0	13.0	
				Bottom	8	27.9 27.7	27.8	8.1 8.1	8.1	34.0 34.0	34.0	94.8 95.2	95.0	6.9 6.9	6.9		2.3 2.5	2.4		6.0 7.0	6.5	
7-Sep-09	Sunny	Calm	08:56	Surface	1	27.2 27.3	27.3	8.1 8.1	8.1	30.4 30.7	30.6	94.2 94.3	94.3	6.9 7.0	7.0	7.0	3.1 3.1	3.1	3.3	9.0 9.0	9.0	9.3
				Middle	4	27.2 27.1	27.2	8.0 7.8	7.9	31.5 31.5	31.5	94.3 94.3	94.3	7.0 7.0	7.0		3.2 3.4	3.3		9.0 9.0	9.0	
				Bottom	7	27.1 27.1	27.1	7.9 8.0	8.0	32.4 32.4	32.4	94.2 94.0	94.1	6.9 6.9	6.9		3.6 3.4	3.5		10.0 10.0	10.0	
9-Sep-09	Cloudy	Calm	09:41	Surface	1	27.9 27.9	27.9	6.7 7.0	6.9	33.9 34.0	34.0	91.9 91.7	91.8	6.5 6.6	6.6	6.6	1.2 1.3	1.3	2.0	5.0 5.0	5.0	6.8
				Middle	4.5	27.9 27.9	27.9	6.9 6.9	6.9	34.0 33.9	34.0	86.3 92.9	89.6	6.4 6.6	6.5		1.7 1.8	1.8		7.0 7.0	7.0	
				Bottom	8	27.8 27.8	27.8	7.3 7.3	7.3	34.0 34.1	34.1	94.6 95.2	94.9	6.8 6.9	6.9		2.7 2.8	2.8		9.0 8.0	8.5	
11-Sep-09	Cloudy	Calm	12:01	Surface	1	27.7 27.9	27.8	7.6 7.8	7.7	34.1 33.9	34.0	92.0 91.5	91.8	6.5 6.6	6.6	6.6	1.1 1.1	1.1	1.8	10.0 10.0	10.0	9.3
				Middle	4.5	27.8 27.9	27.9	7.8 7.9	7.9	34.0 34.0	34.0	86.2 92.8	89.5	6.3 6.6	6.5		1.2 1.4	1.3		7.0 7.0	7.0	
				Bottom	8	27.9 27.9	27.9	8.4 8.4	8.4	33.9 34.1	34.0	94.8 95.1	95.0	6.8 7.0	6.9		2.8 3.1	3.0		11.0 11.0	11.0	
16-Sep-09	Rainy	Calm	17:40	Surface	1	27.8 27.8	27.8	7.8 7.8	7.8	34.0 34.0	34.0	92.0 91.5	91.8	6.7 6.8	6.8	6.7	1.5 1.4	1.5	1.9	<2.5 3.0	2.8	3.4
				Middle	4.5	27.8 27.7	27.8	7.9 8.0	8.0	33.9 33.9	33.9	86.2 92.9	89.6	6.3 6.9	6.6		1.8 1.7	1.8		5.0 5.0	5.0	
				Bottom	8	27.7 27.8	27.8	8.3 8.3	8.3	33.9 34.1	34.0	94.7 95.2	95.0	6.8 6.8	6.8		2.4 2.3	2.4		<2.5 <2.5	<2.5	
18-Sep-09	Fine	Calm	17:36	Surface	1	27.8 27.8	27.8	7.3 7.4	7.4	30.2 30.2	30.2	94.6 95.1	94.9	6.5 6.5	6.5	6.5	3.1 2.8	3.0	3.3	5.0 6.0	5.5	8.3
				Middle	4.5	27.7 27.6	27.7	7.9 7.1	7.5	30.3 30.3	30.3	94.5 94.0	94.3	6.5 6.5	6.5		3.0 3.2	3.1		7.0 7.0	7.0	
				Bottom	8	27.5 27.4	27.5	7.2 8.1	7.7	30.4 30.4	30.4	92.6 92.7	92.7	6.4 6.4	6.4		3.5 3.9	3.7		13.0 12.0	12.5	
21-Sep-09	Cloudy	Calm	08:39	Surface	1	27.8 27.8	27.8	7.8 8.2	8.0	34.1 34.0	34.1	92.0 91.6	91.8	6.6 6.6	6.6	6.5	1.3 1.3	1.3	1.8	9.0 9.0	9.0	9.3
				Middle	4.5	27.9 27.8	27.9	8.3 8.1	8.2	34.1 34.0	34.1	86.3 92.8	89.6	6.2 6.6	6.4		1.7 1.8	1.8		6.0 6.0	6.0	
				Bottom	8	27.9 27.9	27.9	8.5 8.6	8.6	33.9 33.9	33.9	94.8 95.1	95.0	6.9 6.8	6.9		2.5 2.3	2.4		13.0 13.0	13.0	

Water Quality Monitoring Results at I1 - Mid-Flood Tide

Date	Weather Condition	Sea Condition**	Sampling Time	Depth (m)		Water Temperature (°C)		pH		Salinity ppt		DO Saturation (%)		Dissolved Oxygen (mg/L)			Turbidity(NTU)			Suspended Solids (mg/L)		
						Value	Average	Value	Average	Value	Average	Value	Average	Value	Average	DA*	Value	Average	DA*	Value	Average	DA*
23-Sep-09	Fine	Calm	10:05	Surface	1	25.9 25.7	25.8	8.1 8.2	8.2	33.9 33.9	33.9	91.8 91.5	91.7	6.5 6.7	6.6	6.5	1.9 1.8	1.9	2.2	7.0 8.0	7.5	10.8
				Middle	4.5	25.9 25.7	25.8	8.2 8.3	8.3	34.0 33.9	34.0	86.2 92.9	89.6	6.2 6.6	6.4		1.8 1.9	1.9		11.0 11.0	11.0	
				Bottom	8	25.8 25.8	25.8	8.5 8.6	8.6	33.9 33.9	33.9	94.8 95.1	95.0	6.8 6.9	6.9		2.9 2.9	2.9		14.0 14.0	14.0	
30-Sep-09	Rainy	Calm	16:34	Surface	1	29.3 29.3	29.3	50.8 50.8	50.8	32.3 32.8	32.6	84.0 84.1	84.1	6.4 6.4	6.4	6.4	4.1 4.2	4.2	3.8	10.0 10.0	10.0	9.3
				Middle	4	29.3 29.3	29.3	51.2 51.2	51.2	32.9 32.6	32.8	84.0 84.0	84.0	6.4 6.4	6.4		3.6 3.7	3.7		10.0 10.0	10.0	
				Bottom	7	29.2 29.1	29.2	51.6 51.5	51.6	32.9 32.5	32.7	84.0 84.0	84.0	6.4 6.4	6.4		3.5 3.4	3.5		8.0 8.0	8.0	

Remarks: The reporting limit for laboratory analysis of suspended solids is 2.5 mg/L. For the results below the reporting limit, the SS level will be taken as 2.5 mg/L.

* DA: Depth-Averaged

** Calm: Small or no wave; Moderate: Between calm and rough; Rough : White capped or rougher

Water Quality Monitoring Results at I2 - Mid-Ebb Tide

Date	Weather Condition	Sea Condition**	Sampling Time	Depth (m)	Water Temperature (°C)		pH		Salinity ppt		DO Saturation (%)		Dissolved Oxygen (mg/L)			Turbidity(NTU)			Suspended Solids (mg/L)			
					Value	Average	Value	Average	Value	Average	Value	Average	Value	Average	DA*	Value	Average	DA*	Value	Average	DA*	
2-Sep-09	Sunny	Calm	11:25	Surface	1	30.1 30.1	30.1	7.5 7.4	7.5	31.9 32.3	32.1	93.4 93.6	93.5	6.4 6.4	6.4	6.4	4.8 4.7	4.8	4.9	7.0 7.0	7.0	4.8
				Middle	4.5	30.0 30.0	30.0	7.4 8.0	7.7	32.3 32.7	32.5	93.6 93.6	93.6	6.4 6.4	6.4		5.0 5.0	5.0		4.0 4.0	3.5	
				Bottom	8	29.4 29.4	29.4	8.1 8.1	8.1	33.1 33.2	33.2	89.9 89.7	89.8	6.2 6.2	6.2		6.2	4.8 4.9		4.9	4.0 4.0	
4-Sep-09	Fine	Calm	12:32	Surface	1	27.8 27.9	27.9	7.4 8.1	7.8	33.8 33.9	33.9	93.6 93.2	93.4	6.6 6.8	6.7	6.7	1.4 1.4	1.4	1.7	15.0 15.0	15.0	11.7
				Middle	4.5	27.8 27.7	27.8	7.3 7.7	7.5	33.8 33.9	33.9	91.6 89.9	90.8	6.7 6.6	6.7		1.3 1.3	1.3		12.0 12.0	12.0	
				Bottom	8	27.8 27.9	27.9	7.8 7.9	7.9	33.9 34.1	34.0	86.1 82.6	84.4	6.5 6.1	6.3		6.3	2.3 2.3		2.3	8.0 8.0	
7-Sep-09	Sunny	Calm	13:53	Surface	1	29.8 29.8	29.8	7.8 7.8	7.8	32.9 33.4	33.2	92.7 92.7	92.7	6.8 6.8	6.8	6.8	2.9 2.9	2.9	3.3	4.0 5.0	4.5	5.5
				Middle	4	29.7 29.7	29.7	8.1 7.9	8.0	33.5 33.2	33.4	92.8 92.9	92.9	6.8 6.8	6.8		3.1 3.4	3.3		8.0 8.0	8.0	
				Bottom	7	29.6 29.6	29.6	8.0 8.1	8.1	33.5 33.0	33.3	92.8 92.8	92.8	6.8 6.8	6.8		6.8	3.6 3.7		3.7	4.0 4.0	
9-Sep-09	Cloudy	Calm	15:12	Surface	1	27.9 27.8	27.9	6.7 7.5	7.1	33.9 33.8	33.9	93.5 93.4	93.5	6.8 6.9	6.9	6.8	1.4 1.3	1.4	1.7	8.0 8.0	8.0	9.2
				Middle	4.5	27.7 27.9	27.8	6.8 7.1	7.0	33.9 34.1	34.0	91.8 90.0	90.9	6.7 6.6	6.7		1.5 1.5	1.5		11.0 11.0	11.0	
				Bottom	8	27.7 27.9	27.8	7.1 7.3	7.2	34.0 34.0	34.0	87.9 84.7	86.3	6.7 6.3	6.5		6.5	2.4 2.2		2.3	8.0 9.0	
11-Sep-09	Cloudy	Calm	16:39	Surface	1	28.0 27.8	27.9	7.7 8.4	8.1	34.1 34.0	34.1	93.6 93.2	93.4	6.9 6.8	6.9	6.8	1.8 2.1	2.0	1.7	5.0 5.0	5.0	7.0
				Middle	4.5	27.9 27.7	27.8	7.6 7.9	7.8	33.8 34.0	33.9	91.8 89.9	90.9	6.6 6.6	6.6		1.1 1.1	1.1		11.0 11.0	11.0	
				Bottom	8	27.9 27.8	27.9	8.2 8.0	8.1	34.0 33.9	34.0	88.1 84.6	86.4	6.6 6.5	6.6		6.6	2.1 2.1		2.1	5.0 5.0	
14-Sep-09	Cloudy	Moderate	08:33	Surface	1	27.8 28.0	27.9	7.9 8.6	8.3	33.9 34.0	34.0	95.2 94.8	95.0	7.0 6.8	6.9	6.9	1.4 1.5	1.5	1.8	8.0 7.0	7.5	6.5
				Middle	4.5	27.8 27.9	27.9	7.9 8.3	8.1	33.9 33.8	33.9	93.4 91.6	92.5	6.7 6.8	6.8		1.9 1.7	1.8		7.0 7.0	7.0	
				Bottom	8	27.7 27.7	27.7	8.3 8.5	8.4	34.0 34.1	34.1	84.6 81.2	82.9	6.4 6.1	6.3		6.3	2.3 2.0		2.2	5.0 5.0	
16-Sep-09	Rainy	Calm	10:37	Surface	1	27.8 27.8	27.8	7.9 8.4	8.2	33.9 33.8	33.9	93.6 93.4	93.5	6.8 6.8	6.8	6.7	2.0 1.7	1.9	2.0	10.0 10.0	10.0	11.2
				Middle	4.5	27.7 27.8	27.8	7.7 8.0	7.9	33.9 33.9	33.9	91.7 90.0	90.9	6.5 6.4	6.5		2.3 2.0	2.2		11.0 10.0	10.5	
				Bottom	8	27.8 27.9	27.9	8.0 8.1	8.1	34.0 33.9	34.0	85.0 81.7	83.4	6.2 6.2	6.2		6.2	1.8 2.0		1.9	13.0 13.0	
18-Sep-09	Sunny	Calm	11:26	Surface	1	28.0 27.9	28.0	7.8 7.4	7.6	30.2 30.2	30.2	102.1 99.5	100.8	6.8 6.6	6.7	6.4	2.8 2.3	2.6	2.8	9.0 10.0	9.5	11.2
				Middle	4.5	27.5 27.5	27.5	8.1 7.4	7.8	30.4 30.4	30.4	91.5 91.5	91.5	6.1 6.1	6.1		2.5 2.7	2.6		13.0 13.0	13.0	
				Bottom	8	27.2 27.2	27.2	8.2 7.5	7.9	30.6 30.6	30.6	91.4 91.1	91.3	6.1 6.1	6.1		6.1	3.0 3.2		3.1	11.0 11.0	

Water Quality Monitoring Results at I2 - Mid-Ebb Tide

Date	Weather Condition	Sea Condition**	Sampling Time	Depth (m)	Water Temperature (°C)		pH		Salinity ppt		DO Saturation (%)		Dissolved Oxygen (mg/L)			Turbidity(NTU)			Suspended Solids (mg/L)			
					Value	Average	Value	Average	Value	Average	Value	Average	Value	Average	DA*	Value	Average	DA*	Value	Average	DA*	
21-Sep-09	Cloudy	Calm	14:10	Surface	1	27.9 28.0	28.0	8.1 8.8	8.5	33.8 33.8	33.8	93.7 93.3	93.5	6.7 6.6	6.7	6.6	1.5 1.5	1.5	1.9	8.0 8.0	8.0	10.2
				Middle	4.5	27.8 27.9	27.9	7.9 8.1	8.0	34.0 34.1	34.1	91.6 90.1	90.9	6.6 6.4	6.5		1.4 1.2	1.3		10.0 10.0	10.0	
				Bottom	8	27.7 27.9	27.8	8.5 8.3	8.4	33.9 34.0	34.0	87.0 83.6	85.3	6.5 6.2	6.4		6.4	2.7 3.1		2.9	12.0 13.0	
23-Sep-09	Fine	Calm	15:22	Surface	1	26.0 26.0	26.0	8.0 8.6	8.3	34.0 33.8	33.9	93.7 93.4	93.6	6.6 6.7	6.7	6.6	1.8 1.6	1.7	2.0	5.0 5.0	5.0	5.7
				Middle	4.5	25.9 25.7	25.8	7.9 8.3	8.1	33.9 33.9	33.9	91.7 90.0	90.9	6.5 6.5	6.5		2.1 2.1	2.1		6.0 6.0	6.0	
				Bottom	8	25.7 25.7	25.7	8.2 8.3	8.3	34.1 34.1	34.1	82.0 78.8	80.4	6.5 6.0	6.3		6.3	2.1 2.1		2.1	6.0 6.0	
25-Sep-09	Sunny	Calm	08:16	Surface	1	25.9 25.9	25.9	7.7 8.0	7.9	33.9 33.9	33.9	93.7 93.4	93.6	6.8 6.8	6.8	6.7	1.3 1.4	1.4	1.5	5.0 5.0	5.0	5.7
				Middle	4.5	25.9 25.9	25.9	7.3 7.8	7.6	34.0 33.9	34.0	91.8 89.9	90.9	6.6 6.5	6.6		1.0 1.1	1.1		7.0 7.0	7.0	
				Bottom	8	25.9 25.8	25.9	7.9 8.0	8.0	33.9 34.1	34.0	86.9 83.7	85.3	6.4 6.4	6.4		6.4	1.9 2.0		2.0	5.0 5.0	
28-Sep-09	Rainy	Calm	08:24	Surface	1	25.8 26.0	25.9	7.5 8.0	7.8	33.9 34.0	34.0	93.7 93.3	93.5	6.8 6.8	6.8	6.8	1.4 1.4	1.4	1.8	7.0 8.0	7.5	9.2
				Middle	4.5	25.9 25.9	25.9	7.3 7.5	7.4	33.9 34.1	34.0	91.8 90.0	90.9	6.8 6.5	6.7		1.7 1.6	1.7		12.0 12.0	12.0	
				Bottom	8	25.7 25.7	25.7	7.6 7.7	7.7	33.9 34.1	34.0	85.0 81.8	83.4	6.3 6.2	6.3		6.3	2.2 2.3		2.3	8.0 8.0	
30-Sep-09	Rainy	Calm	09:55	Surface	1	27.8 27.8	27.8	47.0 47.8	47.4	30.1 30.2	30.2	85.4 85.5	85.5	6.6 6.6	6.6	6.6	3.2 3.1	3.2	3.3	9.0 9.0	9.0	10.3
				Middle	4	27.8 27.7	27.8	48.7 49.0	48.9	31.2 31.1	31.2	85.5 85.5	85.5	6.6 6.6	6.6		3.4 3.6	3.5		10.0 10.0	10.0	
				Bottom	7	27.7 27.7	27.7	51.0 51.4	51.2	31.9 32.0	32.0	85.4 85.2	85.3	6.6 6.5	6.6		6.6	3.3 3.1		3.2	12.0 12.0	

Remarks: The reporting limit for laboratory analysis of suspended solids is 2.5 mg/L. For the results below the reporting limit, the SS level will be taken as 2.5 mg/L.

* DA: Depth-Averaged

** Calm: Small or no wave; Moderate: Between calm and rough; Rough : White capped or rougher

Water Quality Monitoring Results at I2 - Mid-Flood Tide

Date	Weather Condition	Sea Condition**	Sampling Time	Depth (m)		Water Temperature (°C)		pH		Salinity ppt		DO Saturation (%)		Dissolved Oxygen (mg/L)			Turbidity(NTU)			Suspended Solids (mg/L)		
						Value	Average	Value	Average	Value	Average	Value	Average	Value	Average	DA*	Value	Average	DA*	Value	Average	DA*
2-Sep-09	Fine	Calm	16:25	Surface	1	29.6 29.6	29.6	8.3 7.8	8.1	33.1 33.1	33.1	96.3 96.4	96.4	6.6 6.6	6.6	6.6	4.7 4.8	4.8	5.0	4.0 5.0	4.5	7.5
				Middle	4.5	29.4 29.4	29.4	7.8 8.1	8.0	33.2 33.2	33.2	96.2 95.9	96.1	6.6 6.6	6.6		4.6 4.5	4.6		8.0 8.0	8.0	
				Bottom	8	29.1 29.1	29.1	7.6 7.4	7.5	33.6 33.6	33.6	94.4 93.7	94.1	6.5 6.5	6.5		5.3 5.7	5.5		10.0 10.0	10.0	
4-Sep-09	Fine	Calm	17:30	Surface	1	27.8 27.9	27.9	7.0 7.5	7.3	33.9 34.0	34.0	90.5 90.2	90.4	6.4 6.6	6.5	6.5	2.0 2.0	2.0	2.4	10.0 10.0	10.0	11.8
				Middle	4.5	27.9 27.8	27.9	8.1 7.1	7.6	34.0 34.0	34.0	89.6 90.5	90.1	6.4 6.5	6.5		2.3 2.3	2.3		13.0 12.0	12.5	
				Bottom	8	27.8 27.8	27.8	7.9 7.9	7.9	34.0 34.1	34.1	92.9 93.8	93.4	6.6 6.7	6.7		2.9 2.9	2.9		13.0 13.0	13.0	
7-Sep-09	Sunny	Calm	08:54	Surface	1	27.2 27.2	27.2	7.9 7.8	7.9	30.3 30.2	30.3	92.5 92.7	92.6	6.7 6.8	6.8	6.8	2.8 2.9	2.9	3.1	11.0 11.0	11.0	7.8
				Middle	4	27.2 27.2	27.2	7.8 7.8	7.8	33.6 33.8	33.7	92.9 92.9	92.9	6.8 6.8	6.8		3.1 3.1	3.1		6.0 6.0	6.0	
				Bottom	7	27.0 27.0	27.0	7.9 8.0	8.0	33.6 33.8	33.7	92.7 92.7	92.7	6.8 6.8	6.8		3.2 3.4	3.3		7.0 6.0	6.5	
9-Sep-09	Cloudy	Calm	09:31	Surface	1	27.9 27.9	27.9	6.5 6.8	6.7	33.9 34.0	34.0	90.5 90.4	90.5	6.5 6.6	6.6	6.6	1.6 1.6	1.6	1.9	7.0 7.0	7.0	9.7
				Middle	4.5	27.8 27.7	27.8	7.3 6.8	7.1	33.9 34.0	34.0	89.6 90.6	90.1	6.4 6.7	6.6		2.0 2.0	2.0		12.0 12.0	12.0	
				Bottom	8	27.7 27.7	27.7	7.3 7.3	7.3	34.0 33.9	34.0	92.7 93.8	93.3	6.7 6.9	6.8		2.1 2.2	2.2		10.0 10.0	10.0	
11-Sep-09	Cloudy	Calm	11:50	Surface	1	28.0 27.9	28.0	7.3 7.7	7.5	34.0 33.8	33.9	90.6 90.4	90.5	6.6 6.6	6.6	6.6	1.5 1.5	1.5	2.0	8.0 7.0	7.5	9.2
				Middle	4.5	27.9 27.7	27.8	8.3 7.7	8.0	34.0 34.0	34.0	89.6 90.6	90.1	6.6 6.5	6.6		2.0 2.0	2.0		13.0 13.0	13.0	
				Bottom	8	27.7 27.8	27.8	8.1 8.4	8.3	34.1 34.0	34.1	92.7 93.8	93.3	6.8 6.9	6.9		2.4 2.3	2.4		7.0 7.0	7.0	
16-Sep-09	Rainy	Calm	17:30	Surface	1	27.9 28.0	28.0	7.3 7.8	7.6	34.1 33.8	34.0	90.6 90.2	90.4	6.4 6.7	6.6	6.6	1.6 1.8	1.7	2.6	<2.5 <2.5	<2.5	4.7
				Middle	4.5	27.8 27.9	27.9	8.3 7.5	7.9	34.1 34.0	34.1	89.6 90.6	90.1	6.5 6.5	6.5		3.0 2.7	2.9		8.0 8.0	8.0	
				Bottom	8	27.8 27.9	27.9	8.1 8.3	8.2	34.0 34.1	34.1	92.7 93.8	93.3	6.8 6.7	6.8		3.1 3.1	3.1		3.0 4.0	3.5	
18-Sep-09	Fine	Calm	17:30	Surface	1	28.1 28.0	28.1	7.4 7.3	7.4	30.2 30.2	30.2	98.5 98.5	98.5	6.7 6.7	6.7	6.6	2.7 2.4	2.6	2.9	7.0 7.0	7.0	9.5
				Middle	4.5	27.5 27.5	27.5	7.1 7.5	7.3	30.4 30.4	30.4	95.7 92.3	94.0	6.6 6.4	6.5		2.9 2.7	2.8		9.0 10.0	9.5	
				Bottom	8	27.3 27.3	27.3	7.3 7.2	7.3	30.6 30.5	30.6	90.4 90.0	90.2	6.2 6.2	6.2		3.4 3.4	3.4		12.0 12.0	12.0	
21-Sep-09	Cloudy	Calm	08:29	Surface	1	27.8 27.9	27.9	7.6 8.2	7.9	33.9 34.0	34.0	90.5 90.4	90.5	6.4 6.4	6.4	6.5	1.3 1.4	1.4	2.3	6.0 6.0	6.0	11.7
				Middle	4.5	27.9 27.8	27.9	8.5 7.8	8.2	33.8 34.0	33.9	89.4 90.5	90.0	6.4 6.6	6.5		2.8 2.8	2.8		10.0 10.0	10.0	
				Bottom	8	27.8 27.8	27.8	8.5 8.7	8.6	34.1 34.1	34.1	92.7 93.8	93.3	6.8 6.9	6.9		2.8 2.8	2.8		19.0 19.0	19.0	

Water Quality Monitoring Results at I2 - Mid-Flood Tide

Date	Weather Condition	Sea Condition**	Sampling Time	Depth (m)		Water Temperature (°C)		pH		Salinity ppt		DO Saturation (%)		Dissolved Oxygen (mg/L)			Turbidity(NTU)			Suspended Solids (mg/L)		
						Value	Average	Value	Average	Value	Average	Value	Average	Value	Average	DA*	Value	Average	DA*	Value	Average	DA*
23-Sep-09	Fine	Calm	09:54	Surface	1	25.9 25.9	25.9	7.6 8.1	7.9	33.8 34.0	33.9	90.6 90.4	90.5	6.7 6.5	6.6	6.6	1.8 1.9	1.9	2.6	9.0 9.0	9.0	8.7
				Middle	4.5	25.7 25.7	25.7	8.6 7.8	8.2	34.0 33.9	34.0	89.5 90.7	90.1	6.4 6.5	6.5		2.1 2.2	2.2		8.0 8.0	8.0	
				Bottom	8	25.9 25.9	25.9	8.6 8.7	8.7	34.0 34.1	34.1	92.7 94.0	93.4	6.6 6.7	6.7		3.6 3.6	3.6		9.0 9.0	9.0	
30-Sep-09	Rainy	Calm	16:33	Surface	1	29.4 29.4	29.4	48.8 49.7	49.3	30.7 30.7	30.7	84.4 84.4	84.4	6.4 6.4	6.4	6.5	3.9 3.8	3.9	3.6	9.0 9.0	9.0	6.8
				Middle	4	29.3 29.3	29.3	49.4 49.5	49.5	31.8 32.3	32.1	84.8 84.7	84.8	6.5 6.5	6.5		3.6 3.5	3.6		7.0 7.0	7.0	
				Bottom	7	29.2 29.2	29.2	48.9 51.1	50.0	32.6 33.2	32.9	85.3 84.5	84.9	6.5 6.5	6.5		3.2 3.3	3.3		4.0 5.0	4.5	

Remarks: The reporting limit for laboratory analysis of suspended solids is 2.5 mg/L. For the results below the reporting limit, the SS level will be taken as 2.5 mg/L.

* DA: Depth-Averaged

** Calm: Small or no wave; Moderate: Between calm and rough; Rough : White capped or rougher

Water Quality Monitoring Results at Intake A - Mid-Ebb Tide

Date	Weather Condition	Sea Condition**	Sampling Time	Depth (m)	Water Temperature (°C)		pH		Salinity ppt		DO Saturation (%)		Dissolved Oxygen (mg/L)			Turbidity(NTU)			Suspended Solids (mg/L)				
					Value	Average	Value	Average	Value	Average	Value	Average	Value	Average	DA*	Value	Average	DA*	Value	Average	DA*		
2-Sep-09	Sunny	Calm	11:15	Surface	1	29.6 29.7	29.7	7.6 7.5	7.6	32.1 32.0	32.1	95.2 95.2	95.2	6.6 6.6	6.6	6.6	6.6	4.4 4.6	4.5	5.5	3.0 3.0	3.0	7.0
				Middle	5	29.2 29.1	29.2	7.4 7.4	7.4	32.9 32.8	32.9	94.7 94.6	94.7	6.6 6.5	6.6	6.6	5.2 5.5	5.4	12.0 12.0		12.0		
				Bottom	9	29.0 29.0	29.0	7.9 7.9	7.9	33.0 33.1	33.1	94.0 93.6	93.8	6.5 6.5	6.5	6.5	6.6 6.7	6.7	6.0 6.0		6.0		
4-Sep-09	Fine	Calm	12:20	Surface	1	28.0 27.8	27.9	8.1 7.3	7.7	33.8 33.7	33.8	94.8 94.7	94.8	7.0 6.9	7.0	7.0	1.8 1.7	1.8	1.8	8.0 8.0	8.0	8.5	
				Middle	5	27.9 27.9	27.9	8.0 8.4	8.2	33.8 34.0	33.9	110.7 114.4	112.6	8.2 8.3	8.3	8.3	1.4 1.5	1.5		6.0 7.0	6.5		
				Bottom	9	27.9 27.9	27.9	7.4 7.4	7.4	33.8 34.0	33.9	95.8 95.3	95.6	6.9 6.9	6.9	6.9	2.1 2.1	2.1		11.0 11.0	11.0		
7-Sep-09	Sunny	Calm	13:58	Surface	1	29.9 29.9	29.9	8.0 7.9	8.0	31.4 31.2	31.3	93.3 93.4	93.4	6.8 6.8	6.8	6.8	2.6 2.4	2.5	2.9	7.0 8.0	7.5	10.5	
				Middle	4.5	29.7 29.7	29.7	7.9 8.1	8.0	33.8 33.5	33.7	93.6 93.6	93.6	6.9 6.9	6.9	6.9	2.8 2.9	2.9		11.0 11.0	11.0		
				Bottom	8	29.6 29.6	29.6	7.9 8.1	8.0	34.5 34.4	34.5	93.5 93.4	93.5	6.8 6.8	6.8	6.8	3.1 3.2	3.2		13.0 13.0	13.0		
9-Sep-09	Cloudy	Calm	15:01	Surface	1	27.9 28.0	28.0	7.7 6.6	7.2	33.8 33.7	33.8	94.8 94.6	94.7	6.9 6.7	6.8	6.8	1.8 1.8	1.8	2.0	8.0 8.0	8.0	7.7	
				Middle	5	27.8 27.9	27.9	7.2 7.9	7.6	33.8 33.9	33.9	110.5 114.4	112.5	8.1 8.5	8.3	8.3	1.8 1.9	1.9		10.0 10.0	10.0		
				Bottom	9	27.9 27.8	27.9	6.8 6.9	6.9	34.0 33.8	33.9	76.8 95.2	86.0	5.6 6.9	6.3	6.3	2.4 2.1	2.3		5.0 5.0	5.0		
11-Sep-09	Cloudy	Calm	16:27	Surface	1	27.9 27.8	27.9	8.6 7.7	8.2	34.0 33.8	33.9	95.0 94.6	94.8	6.8 6.9	6.9	6.9	1.6 1.6	1.6	1.7	9.0 8.0	8.5	9.5	
				Middle	5	27.8 27.9	27.9	8.2 8.7	8.5	33.8 34.0	33.9	110.5 114.3	112.4	8.2 8.5	8.4	8.4	1.2 1.2	1.2		12.0 12.0	12.0		
				Bottom	9	27.7 27.8	27.8	7.7 7.9	7.8	33.9 34.1	34.0	76.9 95.2	86.1	5.6 6.9	6.3	6.3	2.2 2.5	2.4		8.0 8.0	8.0		
14-Sep-09	Cloudy	Moderate	08:21	Surface	1	28.0 27.8	27.9	8.8 7.8	8.3	33.9 33.7	33.8	91.4 91.3	91.4	6.4 6.5	6.5	6.5	1.5 1.5	1.5	2.0	8.0 8.0	8.0	10.8	
				Middle	5	27.8 27.8	27.8	8.5 9.1	8.8	33.9 33.8	33.9	107.1 110.9	109.0	7.7 8.1	7.9	7.9	1.8 1.9	1.9		15.0 15.0	15.0		
				Bottom	9	27.8 27.7	27.8	7.9 8.3	8.1	34.1 33.9	34.0	91.7 90.6	91.2	6.6 6.6	6.6	6.6	2.5 2.5	2.5		10.0 9.0	9.5		
16-Sep-09	Rainy	Calm	10:25	Surface	1	27.9 28.0	28.0	8.6 7.8	8.2	34.0 33.9	34.0	95.0 94.5	94.8	6.8 6.9	6.9	6.9	1.5 1.5	1.5	2.0	17.0 17.0	17.0	10.0	
				Middle	5	27.8 27.8	27.8	8.2 8.6	8.4	33.9 33.9	33.9	110.6 114.3	112.5	7.9 8.3	8.1	8.1	1.6 1.7	1.7		10.0 10.0	10.0		
				Bottom	9	27.9 27.7	27.8	7.7 7.9	7.8	34.1 34.0	34.1	76.8 95.2	86.0	5.5 6.9	6.2	6.2	2.8 2.5	2.7		3.0 3.0	3.0		
18-Sep-09	Sunny	Calm	11:16	Surface	1	28.3 28.3	28.3	8.2 7.1	7.7	30.4 30.4	30.4	115.4 112.2	113.8	7.6 7.4	7.5	7.5	2.5 2.7	2.6	2.9	13.0 13.0	13.0	10.3	
				Middle	5	28.0 28.0	28.0	8.0 8.2	8.1	30.4 30.5	30.5	105.6 104.9	105.3	7.0 6.9	7.0	7.0	2.5 2.6	2.6		8.0 8.0	8.0		
				Bottom	9	28.0 28.0	28.0	7.3 7.3	7.3	30.4 30.4	30.4	103.8 102.3	103.1	6.9 6.8	6.9	6.9	3.5 3.7	3.6		10.0 10.0	10.0		

Water Quality Monitoring Results at Intake A - Mid-Ebb Tide

Date	Weather Condition	Sea Condition**	Sampling Time	Depth (m)	Water Temperature (°C)		pH		Salinity ppt		DO Saturation (%)		Dissolved Oxygen (mg/L)			Turbidity(NTU)			Suspended Solids (mg/L)			
					Value	Average	Value	Average	Value	Average	Value	Average	Value	Average	DA*	Value	Average	DA*	Value	Average	DA*	
21-Sep-09	Cloudy	Calm	13:59	Surface	1	27.9 27.9	27.9	8.9 7.9	8.4	33.8 33.7	33.8	95.0 94.5	94.8	6.8 6.8	6.8	7.5	1.3 1.4	1.4	2.0	10.0 10.0	10.0	11.3
				Middle	5	27.8 27.8	27.8	8.3 8.9	8.6	33.8 33.8	33.8	110.6 114.3	112.5	8.1 8.3	8.2		2.0 2.1	2.1		9.0 9.0	9.0	
				Bottom	9	27.7 27.7	27.7	8.0 8.0	8.0	33.9 34.1	34.0	93.7 95.2	94.5	6.8 7.0	6.9		6.9	2.5 2.5		2.5	15.0 15.0	
23-Sep-09	Fine	Calm	15:11	Surface	1	25.8 25.8	25.8	8.9 8.0	8.5	34.0 33.8	33.9	94.9 94.7	94.8	7.0 6.8	6.9	7.3	1.5 1.5	1.5	1.6	9.0 10.0	9.5	7.8
				Middle	5	25.8 25.9	25.9	8.4 8.8	8.6	33.9 33.9	33.9	105.7 109.5	107.6	7.6 7.8	7.7		1.3 1.4	1.4		10.0 10.0	10.0	
				Bottom	9	25.9 25.7	25.8	7.8 8.1	8.0	34.0 33.9	34.0	91.3 93.3	92.3	6.5 6.6	6.6		6.6	2.0 2.0		2.0	4.0 4.0	
25-Sep-09	Sunny	Calm	08:05	Surface	1	26.0 25.9	26.0	8.4 7.5	8.0	34.0 33.9	34.0	95.0 94.7	94.9	6.9 6.9	6.9	7.6	1.0 1.2	1.1	1.8	6.0 6.0	6.0	6.2
				Middle	5	26.0 25.8	25.9	7.9 8.4	8.2	34.1 33.8	34.0	110.5 114.4	112.5	8.1 8.4	8.3		1.8 2.0	1.9		8.0 8.0	8.0	
				Bottom	9	25.9 25.8	25.9	7.4 7.6	7.5	33.9 33.8	33.9	95.1 95.1	95.1	7.1 7.1	7.1		7.1	2.5 2.5		2.5	4.0 5.0	
28-Sep-09	Rainy	Calm	08:13	Surface	1	26.0 26.0	26.0	8.1 7.4	7.8	33.8 33.7	33.8	94.9 94.6	94.8	6.8 6.9	6.9	7.6	1.6 1.6	1.6	1.7	6.0 7.0	6.5	9.5
				Middle	5	25.8 25.9	25.9	7.6 8.4	8.0	34.0 33.8	33.9	110.5 114.4	112.5	8.0 8.0	8.2		1.3 1.4	1.4		11.0 11.0	11.0	
				Bottom	9	25.9 25.7	25.8	7.4 7.3	7.4	33.8 34.0	33.9	94.9 95.3	95.1	6.9 6.9	6.9		6.9	2.1 2.0		2.1	11.0 11.0	
30-Sep-09	Rainy	Calm	10:00	Surface	1	27.8 27.8	27.8	48.1 48.0	48.1	30.7 30.9	30.8	84.5 84.2	84.4	6.5 6.4	6.5	6.4	3.4 3.4	3.4	3.1	9.0 9.0	9.0	7.5
				Middle	4.5	27.7 27.7	27.7	50.2 50.5	50.4	31.6 31.6	31.6	83.3 82.9	83.1	6.3 6.3	6.3		3.2 3.1	3.2		8.0 8.0	8.0	
				Bottom	8	27.6 27.6	27.6	51.4 51.4	51.4	32.2 32.5	32.4	82.2 82.1	82.2	6.2 6.2	6.2		6.2	2.8 2.8		2.8	5.0 6.0	

Remarks: The reporting limit for laboratory analysis of suspended solids is 2.5 mg/L. For the results below the reporting limit, the SS level will be taken as 2.5 mg/L.

* DA: Depth-Averaged

** Calm: Small or no wave; Moderate: Between calm and rough; Rough : White capped or rougher

Water Quality Monitoring Results at Intake A - Mid-Flood Tide

Date	Weather Condition	Sea Condition**	Sampling Time	Depth (m)		Water Temperature (°C)		pH		Salinity ppt		DO Saturation (%)		Dissolved Oxygen (mg/L)			Turbidity(NTU)			Suspended Solids (mg/L)		
						Value	Average	Value	Average	Value	Average	Value	Average	Value	Average	DA*	Value	Average	DA*	Value	Average	DA*
2-Sep-09	Fine	Calm	16:15	Surface	1	29.6 29.6	29.6	7.4 7.4	7.4	32.2 32.3	32.3	97.2 96.8	97.0	6.7 6.7	6.7	6.7	4.7 4.7	4.7	5.3	8.0 8.0	8.0	7.5
				Middle	5	29.4 29.3	29.4	8.1 7.8	8.0	32.8 32.7	32.8	96.2 95.8	96.0	6.7 6.6	6.7		5.3 5.2	5.3		9.0 8.0	8.5	
				Bottom	9	29.1 29.1	29.1	7.8 7.7	7.8	33.0 33.0	33.0	93.5 93.4	93.5	6.5 6.5	6.5		5.8 5.8	5.8		6.0 6.0	6.0	
4-Sep-09	Fine	Calm	17:18	Surface	1	27.9 27.9	27.9	8.1 7.5	7.8	34.0 33.8	33.9	93.2 93.2	93.2	6.6 6.6	6.6	6.7	1.2 1.3	1.3	1.5	9.0 9.0	9.0	11.7
				Middle	5	27.7 27.8	27.8	8.3 7.6	8.0	33.8 33.9	33.9	91.1 91.2	91.2	6.7 6.7	6.7		1.6 1.6	1.6		13.0 13.0	13.0	
				Bottom	9	27.9 27.7	27.8	8.1 7.5	7.8	34.1 34.1	34.1	86.4 87.0	86.7	6.5 6.5	6.5		1.4 1.6	1.5		13.0 13.0	13.0	
7-Sep-09	Sunny	Calm	08:48	Surface	1	27.2 27.2	27.2	8.0 8.0	8.0	31.7 30.8	31.3	92.5 92.5	92.5	6.7 6.7	6.7	6.8	2.6 2.4	2.5	2.7	10.0 10.0	10.0	7.3
				Middle	4.5	27.1 27.0	27.1	8.0 7.8	7.9	32.5 32.7	32.6	92.8 92.7	92.8	6.8 6.8	6.8		2.7 2.7	2.7		4.0 4.0	4.0	
				Bottom	8	27.0 27.0	27.0	7.9 8.0	8.0	33.8 33.8	33.8	92.6 92.6	92.6	6.8 6.8	6.8		2.9 3.1	3.0		8.0 8.0	8.0	
9-Sep-09	Cloudy	Calm	09:19	Surface	1	27.9 27.9	27.9	7.4 6.9	7.2	33.9 34.0	34.0	93.1 93.4	93.3	6.8 6.6	6.7	6.7	1.2 1.2	1.2	1.7	8.0 9.0	8.5	8.2
				Middle	5	27.9 27.9	27.9	7.7 7.7	7.3	34.0 33.8	33.9	91.1 91.3	91.2	6.6 6.6	6.6		1.6 2.0	1.8		7.0 7.0	7.0	
				Bottom	9	27.7 27.7	27.7	7.5 7.1	7.3	34.0 33.9	34.0	91.2 92.1	91.7	6.9 7.0	7.0		1.9 2.0	2.0		9.0 9.0	9.0	
11-Sep-09	Cloudy	Calm	11:38	Surface	1	27.9 27.9	27.9	8.3 8.0	8.2	33.9 34.0	34.0	93.2 93.2	93.2	6.6 6.7	6.7	6.7	1.7 1.7	1.7	1.5	6.0 7.0	6.5	9.8
				Middle	5	27.9 27.8	27.9	8.4 7.7	8.1	33.9 33.8	33.9	91.1 91.4	91.3	6.6 6.5	6.6		1.3 1.5	1.4		12.0 12.0	12.0	
				Bottom	9	27.8 27.9	27.9	8.4 7.8	8.1	34.1 34.0	34.1	86.4 87.0	86.7	6.5 6.3	6.4		1.4 1.3	1.4		11.0 11.0	11.0	
16-Sep-09	Rainy	Calm	17:18	Surface	1	27.9 28.0	28.0	8.3 8.0	8.2	34.0 34.0	34.0	93.2 93.4	93.3	6.7 6.8	6.8	6.7	1.4 1.5	1.5	1.3	12.0 12.0	12.0	8.3
				Middle	5	27.9 27.9	27.9	8.0 7.9	8.3	33.9 33.8	33.9	91.1 91.3	91.2	6.5 6.6	6.6		1.1 1.1	1.1		5.0 5.0	5.0	
				Bottom	9	27.8 27.8	27.8	8.6 8.1	8.4	34.0 33.9	34.0	88.3 89.0	88.7	6.7 6.7	6.7		1.4 1.4	1.4		8.0 8.0	8.0	
18-Sep-09	Fine	Calm	17:22	Surface	1	28.4 28.4	28.4	7.3 7.5	7.4	30.4 30.4	30.4	108.6 108.1	108.4	7.1 7.1	7.1	7.0	2.6 2.7	2.7	3.0	6.0 7.0	6.5	9.5
				Middle	5	28.1 28.1	28.1	7.5 7.6	7.6	30.5 30.5	30.5	103.4 101.6	102.5	6.8 6.7	6.8		2.8 2.9	2.9		9.0 9.0	9.0	
				Bottom	9	27.9 27.9	27.9	7.8 8.1	8.0	30.4 30.4	30.4	99.6 97.9	98.8	6.6 6.5	6.6		3.3 3.7	3.5		13.0 13.0	13.0	
21-Sep-09	Cloudy	Calm	08:17	Surface	1	27.9 27.8	27.9	8.5 8.3	8.4	34.0 33.8	33.9	93.1 93.2	93.2	6.7 6.6	6.7	6.7	1.6 1.6	1.6	1.6	9.0 9.0	9.0	9.8
				Middle	5	27.8 27.8	27.8	8.8 8.1	8.5	33.8 33.8	33.8	91.2 91.3	91.3	6.6 6.5	6.6		1.5 1.5	1.5		7.0 8.0	7.5	
				Bottom	9	27.7 27.8	27.8	8.6 8.1	8.4	34.0 34.1	34.1	84.3 85.0	84.7	6.3 6.1	6.2		1.7 1.7	1.7		13.0 13.0	13.0	

Water Quality Monitoring Results at Intake A - Mid-Flood Tide

Date	Weather Condition	Sea Condition**	Sampling Time	Depth (m)		Water Temperature (°C)		pH		Salinity ppt		DO Saturation (%)		Dissolved Oxygen (mg/L)			Turbidity(NTU)			Suspended Solids (mg/L)		
						Value	Average	Value	Average	Value	Average	Value	Average	Value	Average	DA*	Value	Average	DA*	Value	Average	DA*
23-Sep-09	Fine	Calm	09:42	Surface	1	25.9 25.8	25.9	8.4 8.1	8.3	34.0 34.0	34.0	93.0 93.3	93.2	6.7 6.8	6.8	6.7	1.9 1.7	1.8	1.9	16.0 15.0	15.5	11.2
				Middle	5	25.9 25.8	25.9	8.7 8.2	8.5	33.9 34.0	34.0	91.2 91.2	91.2	6.5 6.6	6.6		1.6 1.3	1.5		8.0 8.0	8.0	
				Bottom	9	25.7 25.9	25.8	8.7 8.2	8.5	33.8 34.0	33.9	87.3 88.1	87.7	6.5 6.4	6.5		2.6 2.4	2.5		10.0 10.0	10.0	
30-Sep-09	Rainy	Calm	16:28	Surface	1	29.4 29.4	29.4	49.0 49.1	49.1	30.8 30.8	30.8	86.2 86.1	86.2	6.6 6.6	6.6	6.7	3.3 3.4	3.4	3.2	5.0 5.0	5.0	8.7
				Middle	4.5	29.3 29.3	29.3	51.3 51.5	51.4	32.8 32.8	32.8	86.6 86.5	86.6	6.7 6.7	6.7		3.2 3.1	3.2		11.0 11.0	11.0	
				Bottom	8	29.1 29.2	29.2	52.0 51.9	52.0	32.5 32.9	32.7	87.1 87.1	87.1	6.7 6.7	6.7		2.9 2.8	2.9		10.0 10.0	10.0	

Remarks: The reporting limit for laboratory analysis of suspended solids is 2.5 mg/L. For the results below the reporting limit, the SS level will be taken as 2.5 mg/L.

* DA: Depth-Averaged

** Calm: Small or no wave; Moderate: Between calm and rough; Rough : White capped or rougher

Water Quality Monitoring Results at Intake B - Mid-Ebb Tide

Date	Weather Condition	Sea Condition**	Sampling Time	Depth (m)	Water Temperature (°C)		pH		Salinity ppt		DO Saturation (%)		Dissolved Oxygen (mg/L)			Turbidity(NTU)			Suspended Solids (mg/L)			
					Value	Average	Value	Average	Value	Average	Value	Average	Value	Average	DA*	Value	Average	DA*	Value	Average	DA*	
2-Sep-09	Sunny	Calm	11:40	Surface	1	29.6 29.6	29.6	7.4 8.0	7.7	32.9 33.0	33.0	96.1 95.2	95.7	6.6 6.5	6.6	6.5	4.4 5.0	4.7	5.3	10.0 10.0	10.0	9.2
				Middle	6	29.1 29.1	29.1	8.0 8.3	8.2	33.4 33.4	33.4	92.7 92.7	92.7	6.4 6.4	6.4		5.6 5.6	5.6		5.0 6.0	5.5	
				Bottom	11	29.1 29.1	29.1	7.9 8.2	8.1	33.4 33.5	33.5	91.4 91.6	91.5	6.3 6.3	6.3		5.7 5.6	5.7		12.0 12.0	12.0	
4-Sep-09	Fine	Calm	12:56	Surface	1	27.9 27.9	27.9	7.2 7.2	7.2	33.9 34.0	34.0	100.1 99.9	100.0	7.3 7.2	7.3	7.3	1.7 2.0	1.9	2.3	13.0 13.0	13.0	10.5
				Middle	6	27.9 27.7	27.8	7.1 7.4	7.3	33.9 34.1	34.0	100.5 100.2	100.4	7.3 7.2	7.3		1.9 2.3	2.1		7.0 8.0	7.5	
				Bottom	11	27.9 27.7	27.8	7.4 7.5	7.5	34.0 34.0	34.0	104.7 105.0	104.9	7.6 7.6	7.6		2.8 2.9	2.9		11.0 11.0	11.0	
7-Sep-09	Sunny	Calm	13:47	Surface	1	29.8 29.9	29.9	7.7 7.8	7.8	31.4 31.3	31.4	95.0 94.9	95.0	7.0 7.0	7.0	7.1	2.3 2.4	2.4	2.5	14.0 12.0	13.0	10.7
				Middle	5.5	29.7 29.6	29.7	8.1 8.0	8.1	33.5 33.3	33.4	95.5 95.4	95.5	7.1 7.0	7.1		2.5 2.5	2.5		9.0 9.0	9.0	
				Bottom	10	29.6 29.6	29.6	7.9 8.1	8.0	33.1 33.5	33.3	96.0 96.0	96.0	7.1 7.1	7.1		2.7 2.6	2.7		10.0 10.0	10.0	
9-Sep-09	Cloudy	Calm	15:37	Surface	1	27.9 27.7	27.8	6.7 6.7	6.7	33.9 34.0	34.0	100.3 100.0	100.2	7.3 7.2	7.3	7.3	1.3 1.4	1.4	2.0	14.0 14.0	14.0	8.2
				Middle	6	27.9 27.7	27.8	6.7 6.9	6.8	33.9 34.0	34.0	100.6 100.0	100.3	7.2 7.4	7.3		2.1 1.9	2.0		4.0 5.0	4.5	
				Bottom	11	27.7 27.9	27.8	6.6 6.9	6.8	34.0 34.0	34.0	104.8 104.9	104.9	7.7 7.6	7.7		2.4 2.5	2.5		6.0 6.0	6.0	
11-Sep-09	Cloudy	Calm	17:03	Surface	1	27.7 27.7	27.7	7.6 7.7	7.7	34.1 34.1	34.1	100.1 100.0	100.1	7.1 7.2	7.2	7.3	1.6 1.6	1.6	1.9	10.0 10.0	10.0	9.8
				Middle	6	27.7 27.9	27.8	7.3 7.7	7.5	33.9 34.0	34.0	100.5 100.2	100.4	7.4 7.2	7.3		2.1 1.9	2.0		12.0 13.0	12.5	
				Bottom	11	27.7 27.9	27.8	7.6 7.8	7.7	34.0 34.1	34.1	104.8 104.8	104.8	7.5 7.7	7.6		1.9 2.1	2.0		7.0 7.0	7.0	
14-Sep-09	Cloudy	Moderate	08:57	Surface	1	27.8 27.9	27.9	8.0 8.1	8.1	34.0 34.0	34.0	96.9 96.7	96.8	6.9 6.9	6.9	7.0	1.5 1.4	1.5	1.9	14.0 14.0	14.0	9.8
				Middle	6	27.8 27.8	27.8	7.7 8.0	7.9	34.0 34.0	34.0	97.1 96.6	96.9	7.0 7.1	7.1		1.8 1.9	1.9		9.0 9.0	9.0	
				Bottom	11	27.8 27.7	27.8	8.0 8.0	8.0	34.0 33.9	34.0	101.5 101.5	101.5	7.2 7.4	7.3		2.3 2.4	2.4		6.0 7.0	6.5	
16-Sep-09	Rainy	Calm	11:01	Surface	1	27.8 27.7	27.8	7.8 7.6	7.7	33.9 33.9	33.9	100.3 100.1	100.2	7.4 7.3	7.4	7.3	1.6 1.7	1.7	2.0	5.0 5.0	5.0	6.0
				Middle	6	27.7 27.8	27.8	7.6 7.7	7.7	34.1 34.1	34.1	100.4 100.2	100.3	7.2 7.2	7.2		1.7 1.8	1.8		5.0 5.0	5.0	
				Bottom	11	27.8 27.8	27.8	7.7 7.8	7.8	34.0 33.9	34.0	104.7 105.0	104.9	7.5 7.7	7.6		2.6 2.4	2.5		8.0 8.0	8.0	
18-Sep-09	Sunny	Calm	11:39	Surface	1	27.5 27.6	27.6	7.0 7.4	7.2	30.3 30.3	30.3	107.9 101.9	104.9	7.2 6.8	7.0	6.5	3.0 3.4	3.2	4.0	10.0 10.0	10.0	8.8
				Middle	6	26.8 26.8	26.8	7.9 7.1	7.5	30.7 30.6	30.7	88.4 87.2	87.8	6.0 5.9	6.0		3.7 4.3	4.0		8.0 9.0	8.5	
				Bottom	11	26.7 26.6	26.7	7.7 8.0	7.9	30.9 30.9	30.9	89.8 89.2	89.5	6.3 6.2	6.3		4.7 5.0	4.9		8.0 8.0	8.0	

Water Quality Monitoring Results at Intake B - Mid-Ebb Tide

Date	Weather Condition	Sea Condition**	Sampling Time	Depth (m)		Water Temperature (°C)		pH		Salinity ppt		DO Saturation (%)		Dissolved Oxygen (mg/L)			Turbidity(NTU)			Suspended Solids (mg/L)		
						Value	Average	Value	Average	Value	Average	Value	Average	Value	Average	DA*	Value	Average	DA*	Value	Average	DA*
21-Sep-09	Cloudy	Calm	14:35	Surface	1	27.7 27.9	27.8	8.1 7.8	8.0	34.2 34.2	34.2	100.1 100.1	100.1	7.1 7.2	7.2	7.3	1.2 1.3	1.3	1.8	8.0 9.0	8.5	11.3
				Middle	6	27.7 27.9	27.8	7.8 8.0	7.9	34.2 34.1	34.2	100.5 100.2	100.4	7.3 7.2	7.3		1.5 1.5	1.5		11.0 12.0	11.5	
				Bottom	11	27.8 27.8	27.8	7.8 8.1	8.0	34.2 33.9	34.1	104.7 104.8	104.8	7.7 7.7	7.7		2.5 2.5	2.5		14.0 14.0	14.0	
23-Sep-09	Fine	Calm	15:47	Surface	1	25.7 25.9	25.8	7.9 7.9	7.9	33.9 34.1	34.0	100.1 99.9	100.0	7.1 7.2	7.2	7.3	1.2 1.4	1.3	1.9	5.0 5.0	5.0	7.0
				Middle	6	25.7 25.8	25.8	7.8 8.2	8.0	34.2 34.1	34.2	100.4 100.2	100.3	7.2 7.3	7.3		1.7 1.7	1.7		8.0 8.0	8.0	
				Bottom	11	25.7 25.7	25.7	8.0 7.9	8.0	34.0 34.1	34.1	104.8 105.0	104.9	7.6 7.7	7.7		2.5 2.6	2.6		8.0 8.0	8.0	
25-Sep-09	Sunny	Calm	08:41	Surface	1	25.8 25.8	25.8	7.3 7.5	7.4	34.0 34.0	34.0	100.2 100.0	100.1	7.2 7.3	7.3	7.3	1.4 1.4	1.4	1.9	5.0 6.0	5.5	6.0
				Middle	6	26.0 25.9	26.0	7.4 7.5	7.5	33.9 34.1	34.0	100.6 100.1	100.4	7.2 7.1	7.2		2.1 2.2	2.2		7.0 7.0	7.0	
				Bottom	11	25.7 25.9	25.8	7.4 7.4	7.4	34.0 34.1	34.1	104.9 104.9	104.9	7.6 7.7	7.7		2.0 2.0	2.0		5.0 6.0	5.5	
28-Sep-09	Rainy	Calm	08:49	Surface	1	25.8 26.0	25.9	7.3 7.4	7.4	34.1 34.0	34.1	100.3 100.0	100.2	7.3 7.1	7.2	7.3	1.5 1.4	1.5	1.8	8.0 9.0	8.5	9.5
				Middle	6	25.7 25.7	25.7	7.2 7.3	7.3	33.9 34.1	34.0	100.6 100.0	100.3	7.3 7.2	7.3		1.3 1.5	1.4		10.0 10.0	10.0	
				Bottom	11	25.7 25.8	25.8	7.2 7.3	7.3	34.0 33.9	34.0	104.9 105.0	105.0	7.7 7.6	7.7		2.1 2.6	2.4		10.0 10.0	10.0	
30-Sep-09	Rainy	Calm	09:47	Surface	1	27.8 27.8	27.8	48.6 48.9	48.8	31.4 31.3	31.4	83.8 83.8	83.8	6.4 6.4	6.4	6.4	2.6 2.6	2.6	2.4	10.0 10.0	10.0	9.7
				Middle	5.5	27.7 27.7	27.7	50.3 50.6	50.5	32.1 32.2	32.2	84.0 84.0	84.0	6.4 6.4	6.4		2.4 2.4	2.4		10.0 10.0	10.0	
				Bottom	10	27.6 27.6	27.6	51.2 51.5	51.4	33.3 33.3	33.3	83.9 83.9	83.9	6.4 6.4	6.4		2.2 2.3	2.3		9.0 9.0	9.0	

Remarks: The reporting limit for laboratory analysis of suspended solids is 2.5 mg/L. For the results below the reporting limit, the SS level will be taken as 2.5 mg/L.

* DA: Depth-Averaged

** Calm: Small or no wave; Moderate: Between calm and rough; Rough : White capped or rougher

Water Quality Monitoring Results at Intake B - Mid-Flood Tide

Date	Weather Condition	Sea Condition**	Sampling Time	Depth (m)		Water Temperature (°C)		pH		Salinity ppt		DO Saturation (%)		Dissolved Oxygen (mg/L)			Turbidity(NTU)			Suspended Solids (mg/L)		
						Value	Average	Value	Average	Value	Average	Value	Average	Value	Average	DA*	Value	Average	DA*	Value	Average	DA*
2-Sep-09	Fine	Calm	16:37	Surface	1	29.5 29.5	29.5	7.5 7.4	7.5	32.3 32.3	32.3	100.7 100.6	100.7	6.9 6.9	6.9	6.8	4.5 4.5	4.5	5.3	4.0 4.0	4.0	3.8
				Middle	6	29.2 29.1	29.2	7.4 8.1	7.8	33.5 33.5	33.5	96.8 96.7	96.8	6.7 6.7	6.7		5.7 6.0	5.9		3.0 4.0	3.5	
				Bottom	11	29.0 29.0	29.0	7.8 8.1	8.0	33.7 33.7	33.7	93.8 93.2	93.5	6.5 6.5	6.5		5.3 5.4	5.4		4.0 4.0	4.0	
4-Sep-09	Fine	Calm	17:54	Surface	1	27.8 27.9	27.9	7.4 7.6	7.5	34.0 34.1	34.1	98.0 98.7	98.4	7.2 7.1	7.2	7.2	1.4 1.4	1.4	2.2	9.0 9.0	9.0	11.0
				Middle	6	27.9 27.7	27.8	8.0 7.3	7.7	34.0 34.0	34.0	97.4 99.2	98.3	7.0 7.1	7.1		2.4 2.1	2.3		10.0 10.0	10.0	
				Bottom	11	27.8 27.7	27.8	7.2 8.3	7.8	33.9 34.0	34.0	104.5 104.6	104.6	7.6 7.6	7.6		2.9 3.0	3.0		14.0 14.0	14.0	
7-Sep-09	Sunny	Calm	09:01	Surface	1	27.2 27.3	27.3	7.9 8.0	8.0	31.1 31.3	31.2	92.8 92.4	92.6	6.8 6.7	6.8	6.7	2.7 2.9	2.8	3.0	8.0 8.0	8.0	8.8
				Middle	5.5	27.0 27.0	27.0	7.7 7.9	7.8	32.0 32.0	32.0	91.5 91.1	91.3	6.6 6.6	6.6		2.9 3.1	3.0		14.0 14.0	14.0	
				Bottom	10	26.9 26.9	26.9	8.0 8.1	8.1	32.6 32.9	32.8	90.4 90.3	90.4	6.5 6.5	6.5		3.4 3.2	3.3		4.0 5.0	4.5	
9-Sep-09	Cloudy	Calm	09:55	Surface	1	27.9 27.9	27.9	6.6 6.8	6.7	34.1 33.9	34.0	98.2 98.7	98.5	7.1 7.2	7.2	7.3	1.7 1.8	1.8	2.0	9.0 9.0	9.0	7.0
				Middle	6	27.9 27.8	27.9	7.4 6.7	7.1	34.1 34.0	34.1	97.3 99.2	98.3	7.2 7.3	7.3		1.9 1.7	1.8		6.0 7.0	6.5	
				Bottom	11	27.8 27.9	27.9	6.8 7.8	7.3	34.1 33.9	34.0	104.6 104.6	104.6	7.7 7.6	7.7		2.2 2.6	2.4		5.0 6.0	5.5	
11-Sep-09	Cloudy	Calm	12:14	Surface	1	28.0 27.8	27.9	7.7 7.8	7.8	34.1 34.1	34.1	98.2 98.5	98.4	7.2 7.2	7.2	7.2	1.9 1.9	1.9	1.8	11.0 11.0	11.0	9.8
				Middle	6	27.9 27.7	27.8	8.1 7.7	7.9	34.2 34.0	34.1	97.4 99.1	98.3	7.1 7.1	7.1		1.5 1.5	1.5		10.0 10.0	10.0	
				Bottom	11	27.9 27.9	27.9	7.8 8.7	8.3	33.9 34.0	34.0	104.6 104.4	104.5	7.6 7.7	7.7		2.0 2.1	2.1		9.0 8.0	8.5	
16-Sep-09	Rainy	Calm	17:54	Surface	1	27.9 27.8	27.9	7.8 7.7	7.8	33.9 34.2	34.1	98.0 98.7	98.4	7.2 7.0	7.1	7.1	1.7 1.7	1.7	2.1	6.0 6.0	6.0	4.3
				Middle	6	27.9 27.9	27.9	8.4 7.8	8.1	34.1 34.0	34.1	97.3 99.0	98.2	6.9 7.2	7.1		1.7 1.9	1.8		4.0 4.0	4.0	
				Bottom	11	27.8 27.9	27.9	7.6 8.6	8.1	34.1 33.9	34.0	104.6 104.5	104.6	7.6 7.6	7.6		2.7 2.7	2.7		<2.5 3.0	2.8	
18-Sep-09	Fine	Calm	17:43	Surface	1	27.2 27.2	27.2	8.5 8.1	8.3	30.4 30.4	30.4	93.6 93.3	93.5	6.5 6.5	6.5	6.4	2.9 2.9	2.9	3.4	5.0 5.0	5.0	8.0
				Middle	6	26.9 27.0	27.0	7.7 7.4	7.6	30.5 30.5	30.5	90.7 89.5	90.1	6.3 6.2	6.3		3.5 3.5	3.5		8.0 8.0	8.0	
				Bottom	11	26.9 26.9	26.9	7.5 7.3	7.4	30.7 30.7	30.7	87.8 87.3	87.6	6.1 6.1	6.1		3.8 3.9	3.9		11.0 11.0	11.0	
21-Sep-09	Cloudy	Calm	08:53	Surface	1	27.8 27.9	27.9	8.0 8.0	8.0	33.9 34.0	34.0	98.0 98.7	98.4	7.2 7.0	7.1	7.1	1.9 1.9	1.9	2.1	11.0 11.0	11.0	9.5
				Middle	6	27.9 27.9	27.9	8.5 8.1	8.3	33.9 33.9	33.9	97.2 99.0	98.1	7.0 7.1	7.1		1.7 1.8	1.8		9.0 9.0	9.0	
				Bottom	11	27.8 27.8	27.8	8.0 9.0	8.5	34.0 34.1	34.1	104.7 104.4	104.6	7.5 7.6	7.6		2.6 2.5	2.6		8.0 9.0	8.5	

Water Quality Monitoring Results at Intake B - Mid-Flood Tide

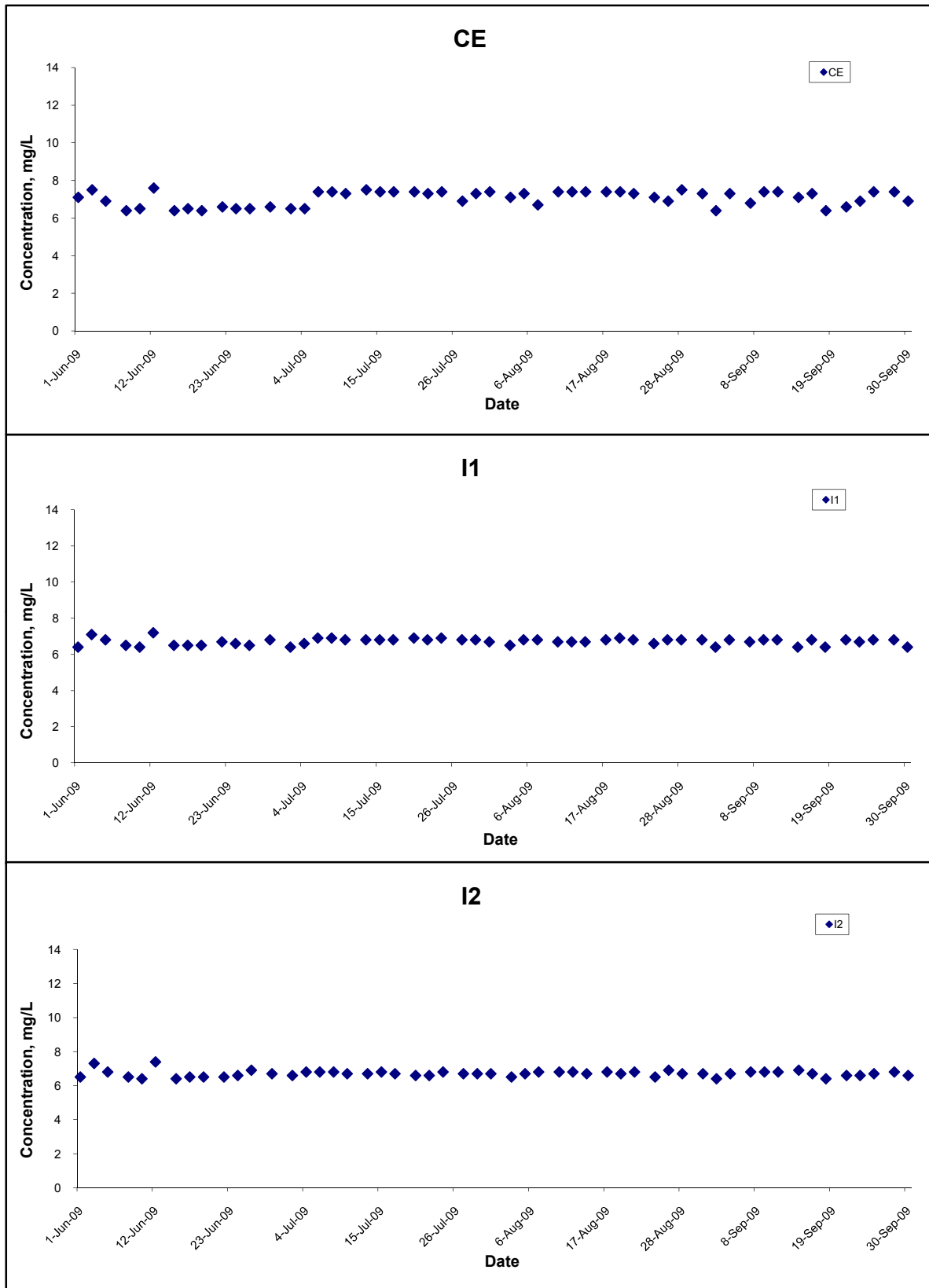
Date	Weather Condition	Sea Condition**	Sampling Time	Depth (m)		Water Temperature (°C)		pH		Salinity ppt		DO Saturation (%)		Dissolved Oxygen (mg/L)			Turbidity(NTU)			Suspended Solids (mg/L)		
						Value	Average	Value	Average	Value	Average	Value	Average	Value	Average	DA*	Value	Average	DA*	Value	Average	DA*
23-Sep-09	Fine	Calm	10:18	Surface	1	25.9 25.8	25.9	8.0 8.1	8.1	34.0 34.1	34.1	98.2 98.6	98.4	7.1 7.0	7.1	7.1	1.2 1.3	1.3	2.0	9.0 9.0	9.0	9.2
				Middle	6	25.7 25.8	25.8	8.4 8.0	8.2	34.1 34.0	34.1	97.2 99.0	98.1	7.0 7.1	7.1		2.2 2.3	2.3		9.0 10.0	9.5	
				Bottom	11	25.8 25.7	25.8	8.0 9.0	8.5	34.1 34.1	34.1	104.6 104.4	104.5	7.6 7.5	7.6		2.3 2.4	2.4		9.0 9.0	9.0	
30-Sep-09	Rainy	Calm	16:39	Surface	1	29.4 29.4	29.4	49.1 48.9	49.0	31.0 30.7	30.9	84.5 84.6	84.6	6.5 6.5	6.5	6.5	3.8 3.6	3.7	3.3	6.0 7.0	6.5	10.5
				Middle	5.5	29.3 29.3	29.3	52.3 52.2	52.3	33.2 33.0	33.1	84.8 84.8	84.8	6.5 6.5	6.5		3.4 3.2	3.3		10.0 10.0	10.0	
				Bottom	10	29.2 29.2	29.2	51.8 51.7	51.8	33.8 33.7	33.8	84.7 84.6	84.7	6.5 6.5	6.5		2.8 2.9	2.9		15.0 15.0	15.0	

Remarks: The reporting limit for laboratory analysis of suspended solids is 2.5 mg/L. For the results below the reporting limit, the SS level will be taken as 2.5 mg/L.

* DA: Depth-Averaged

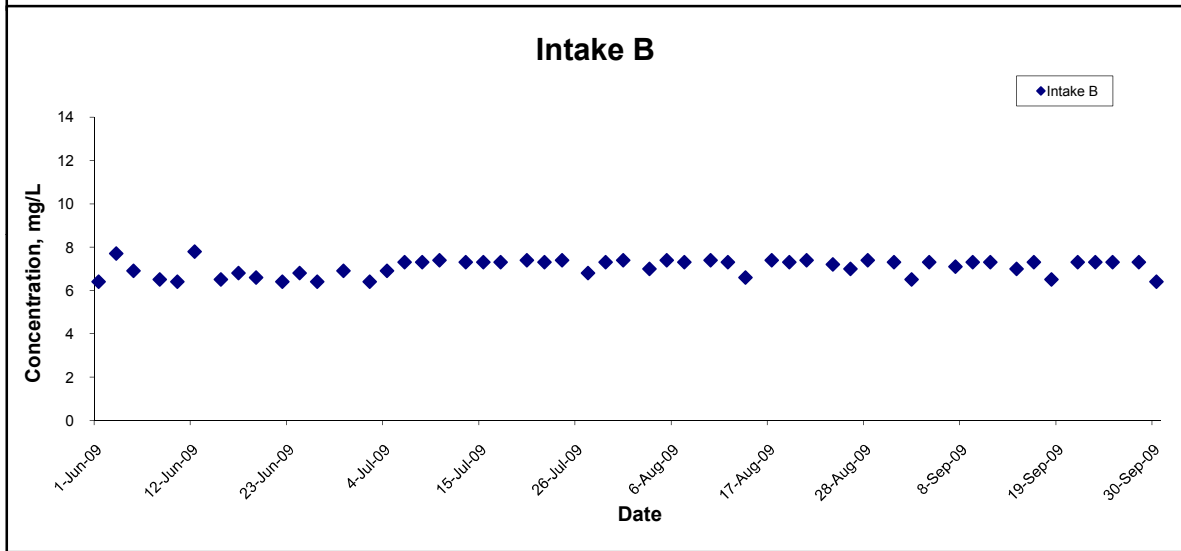
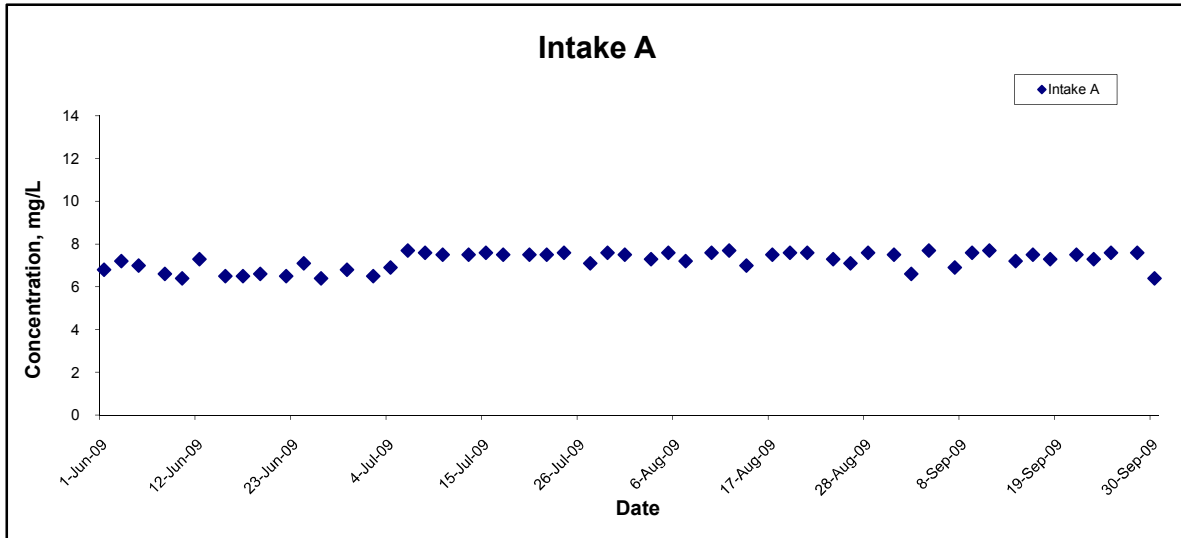
** Calm: Small or no wave; Moderate: Between calm and rough; Rough : White capped or rougher

Dissolved Oxygen (Surface & Middle) at Mid-Ebb Tide



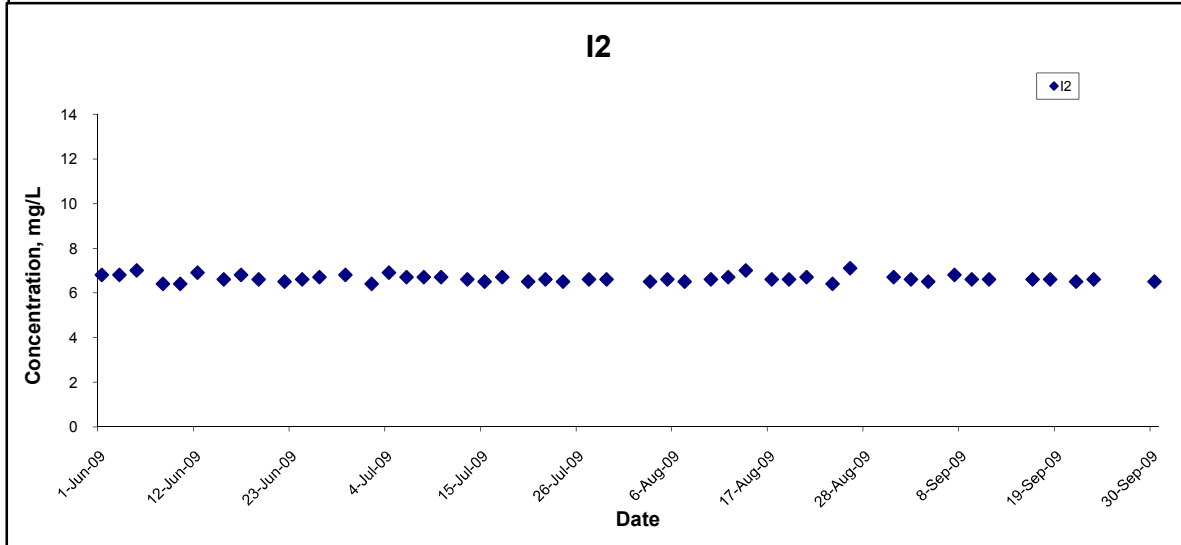
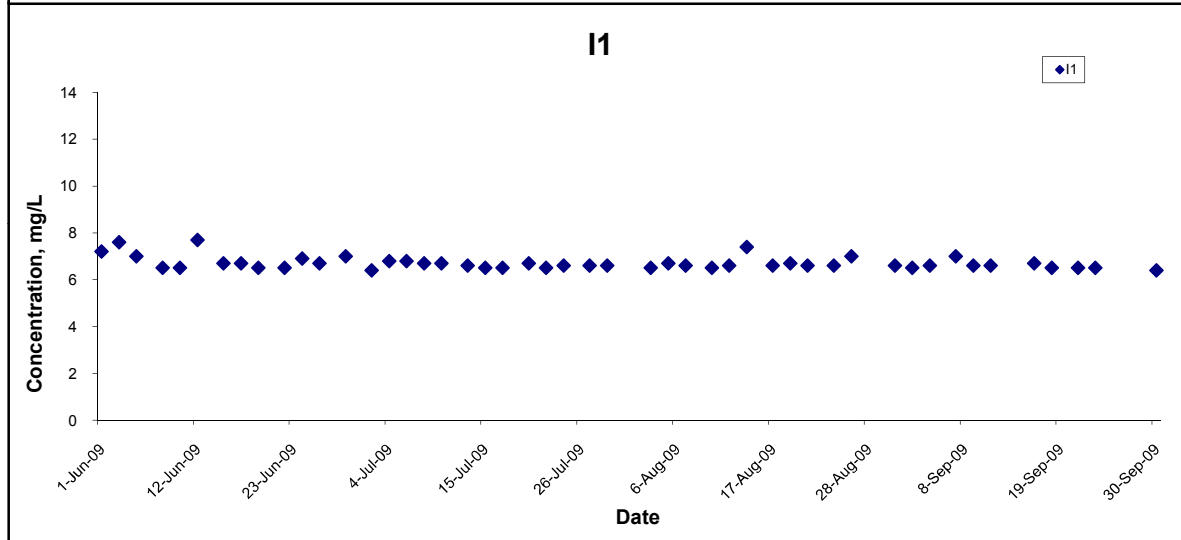
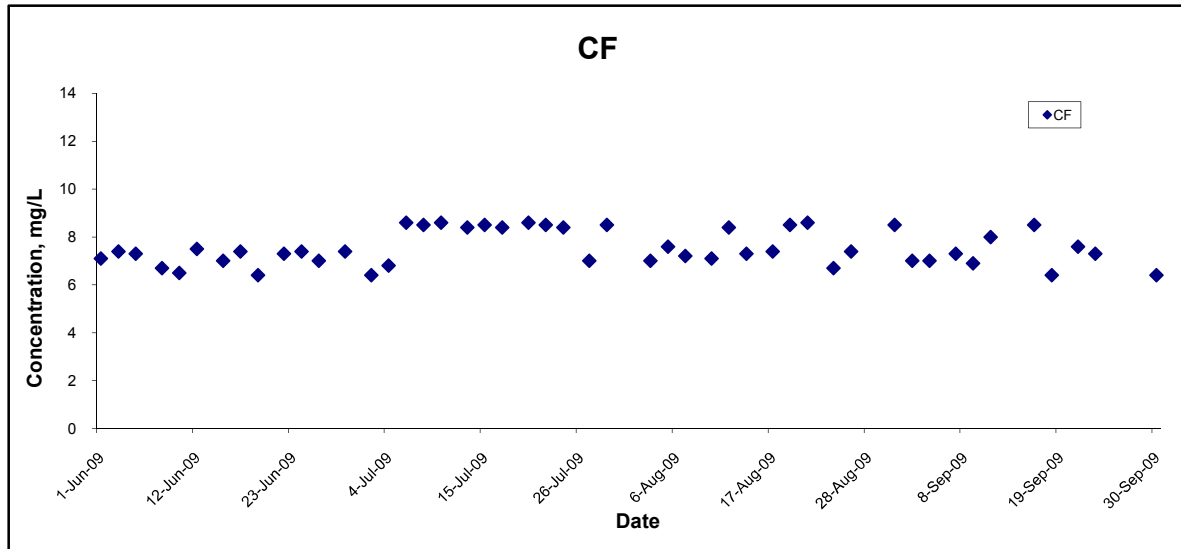
Title Contract No. DC/2007/10 Design and Construction of Hong Kong West Drainage Tunnel Graphical Presentation of Water Quality Monitoring Results	Scale N.T.S	Project No. MA8001	CINOTECH
	Date Sep 09	Appendix H	

Dissolved Oxygen (Surface & Middle) at Mid-Ebb Tide



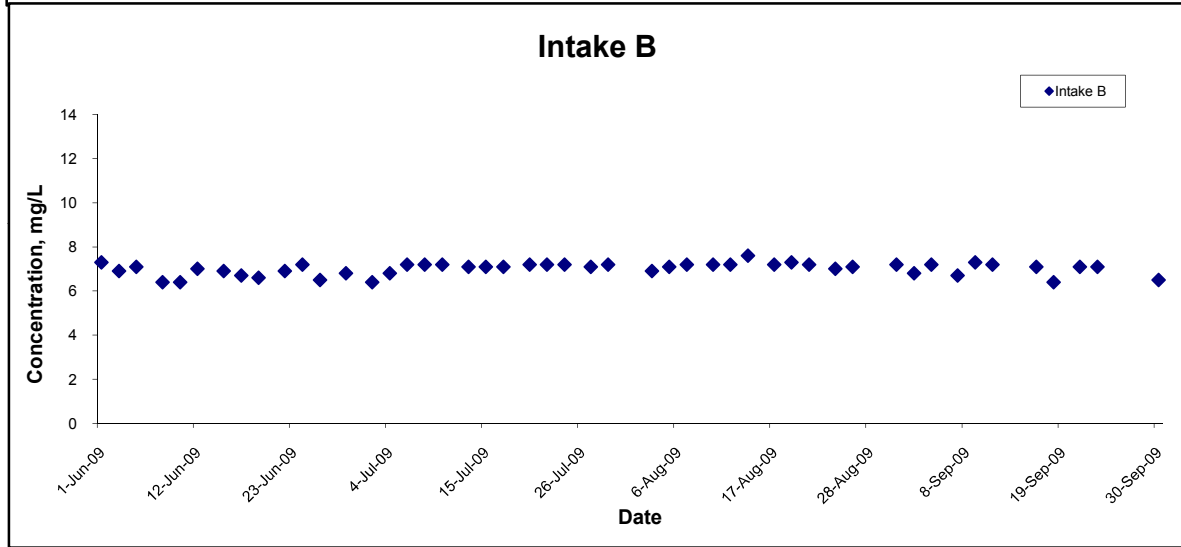
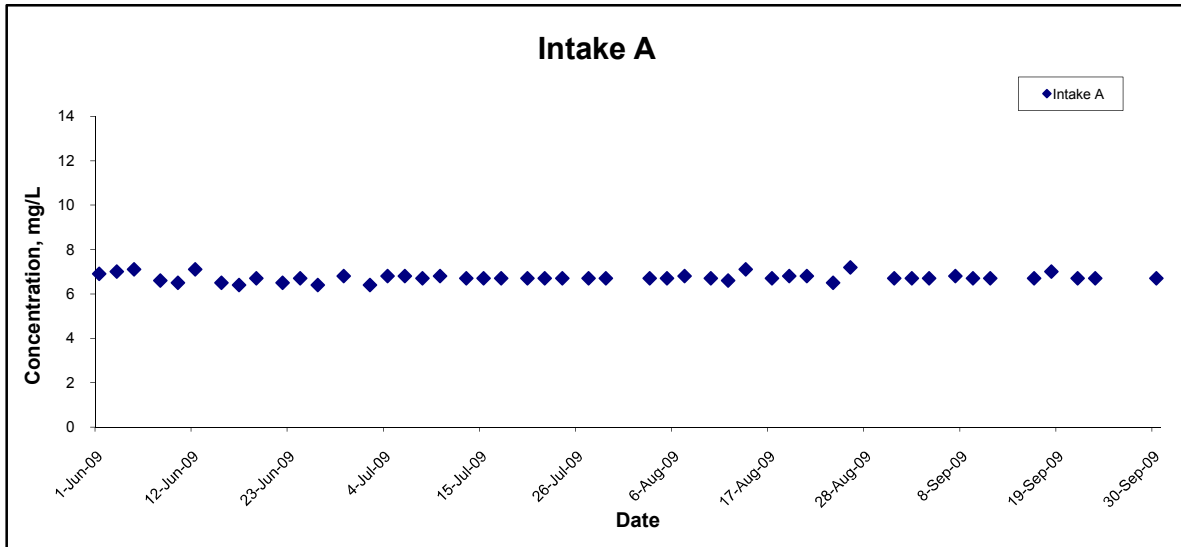
Title Contract No. DC/2007/10 Design and Construction of Hong Kong West Drainage Tunnel Graphical Presentation of Water Quality Monitoring Results	Scale	N.T.S	Project No. MA8001	CINOTECH
	Date	Sep 09	Appendix H	

Dissolved Oxygen (Surface & Middle) at Mid-Flood Tide



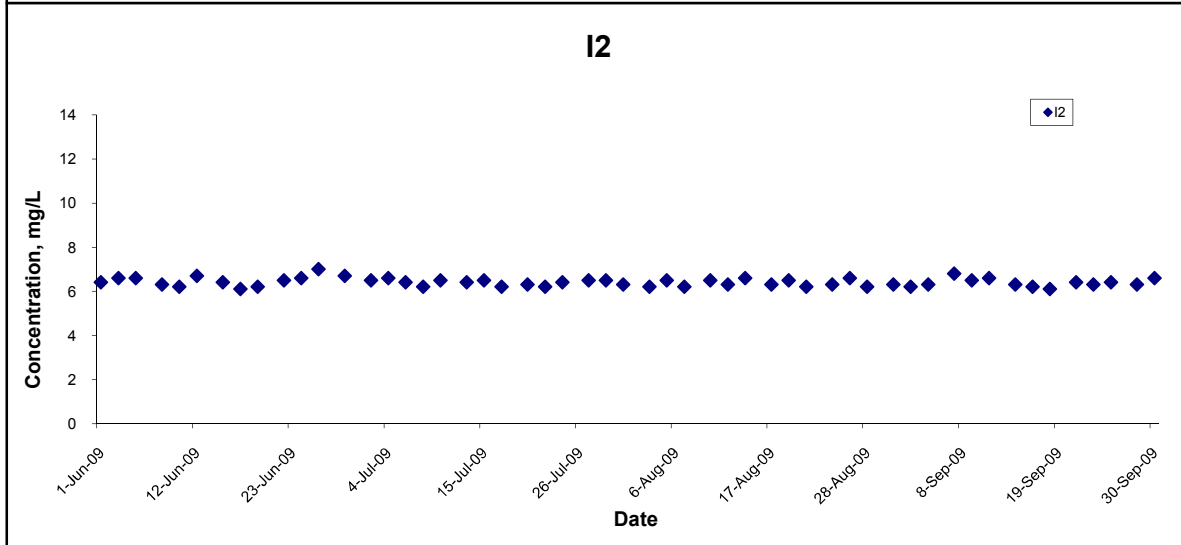
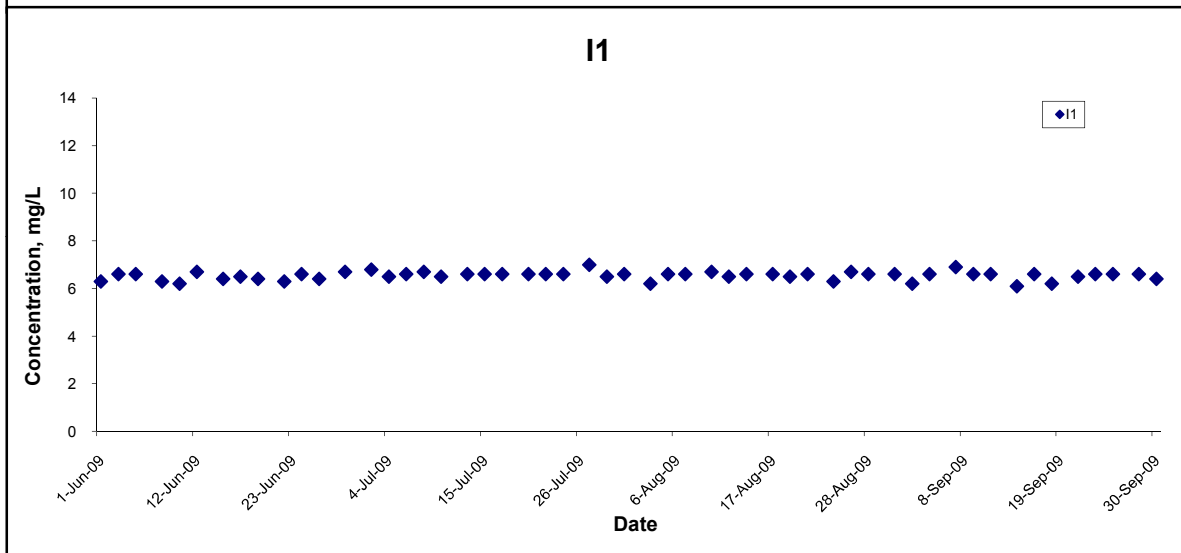
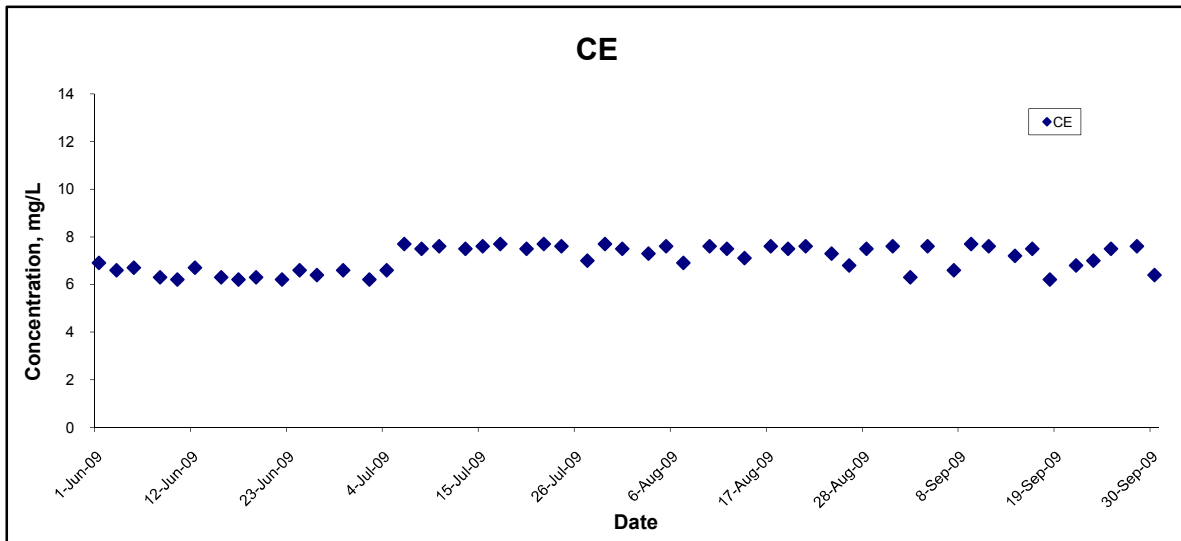
Title Contract No. DC/2007/10 Design and Construction of Hong Kong West Drainage Tunnel Graphical Presentation of Water Quality Monitoring Results	Scale N.T.S	Project No. MA8001	CINOTECH
	Date Sep 09	Appendix H	

Dissolved Oxygen (Surface & Middle) at Mid-Flood Tide



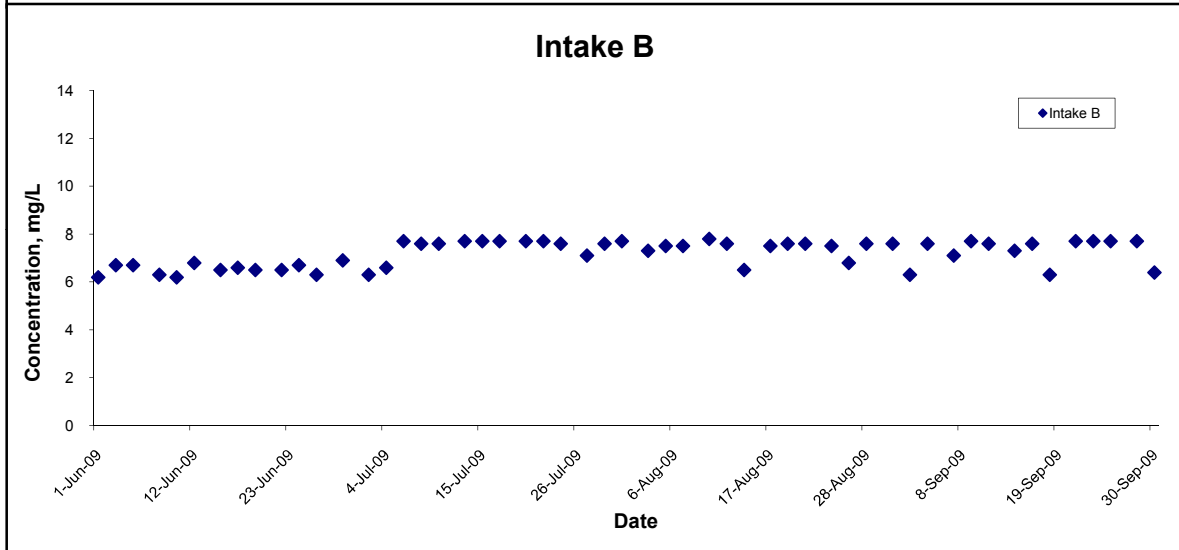
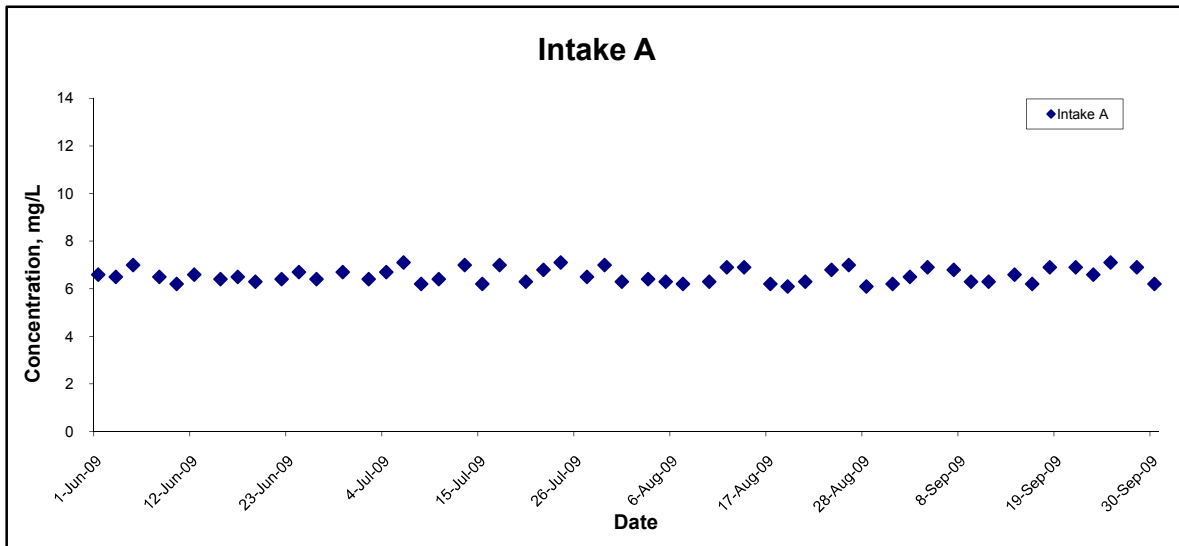
Title Contract No. DC/2007/10 Design and Construction of Hong Kong West Drainage Tunnel Graphical Presentation of Water Quality Monitoring Results	Scale N.T.S	Project No. MA8001	
	Date Sep 09	Appendix H	

Dissolved Oxygen (Bottom) at Mid-Ebb Tide



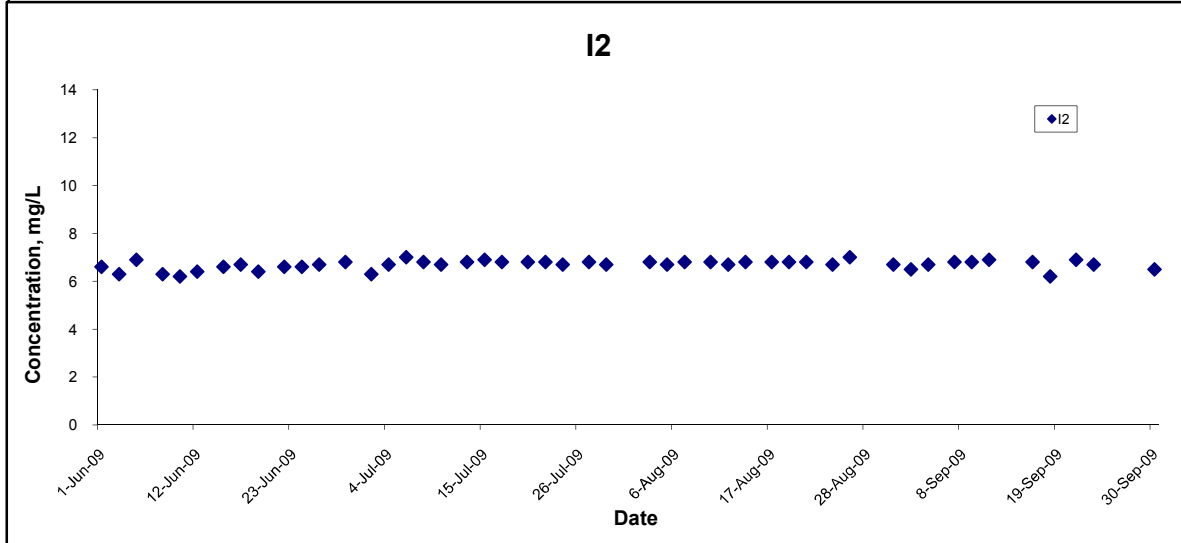
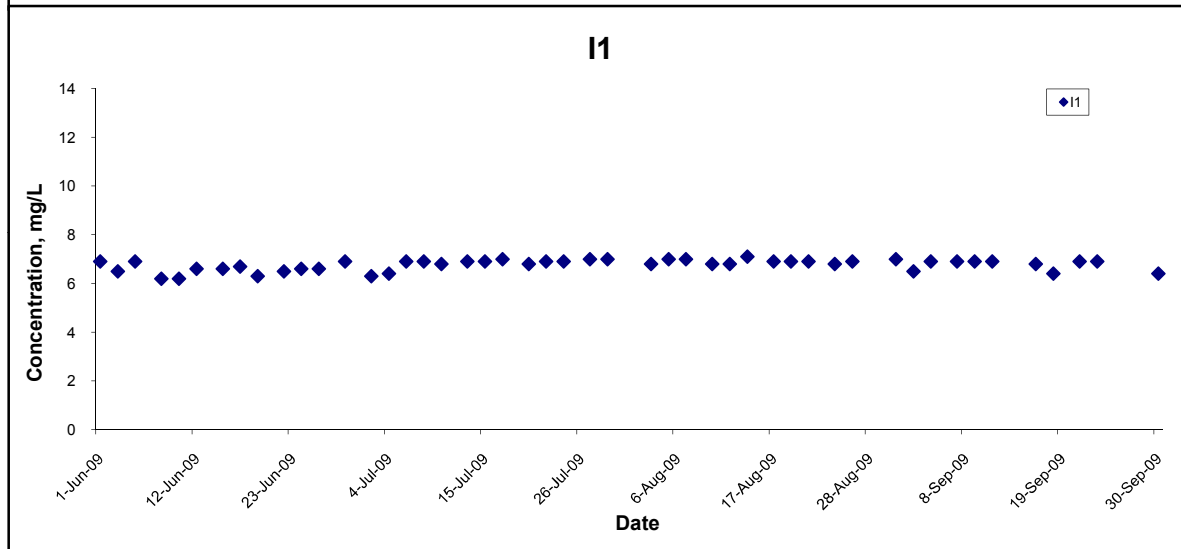
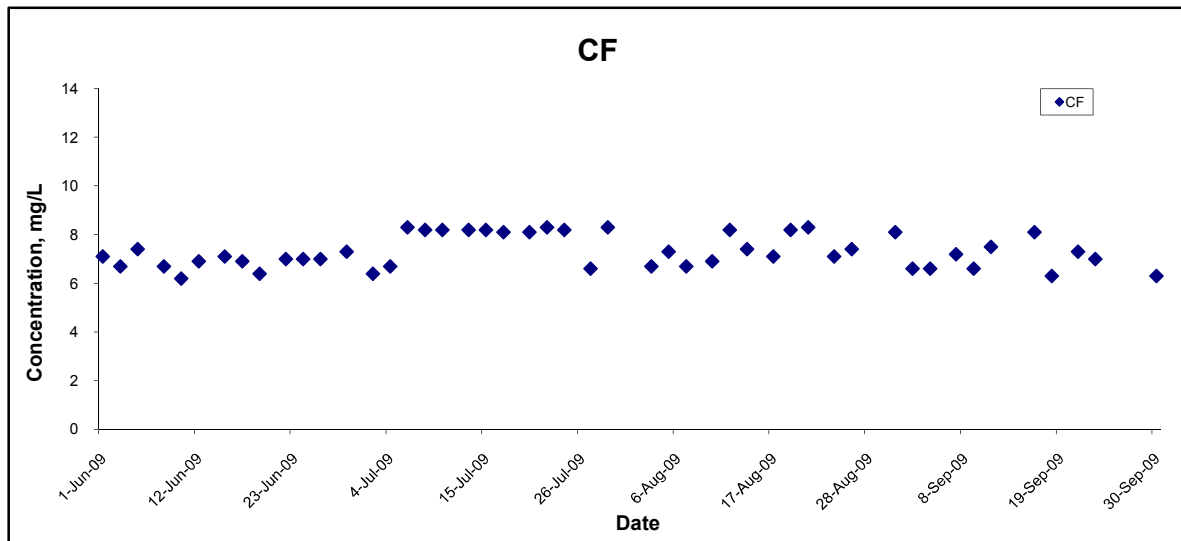
Title Contract No. DC/2007/10 Design and Construction of Hong Kong West Drainage Tunnel Graphical Presentation of Water Quality Monitoring Results	Scale N.T.S	Project No. MA8001	
	Date Sep 09	Appendix H	

Dissolved Oxygen (Bottom) at Mid-Ebb Tide



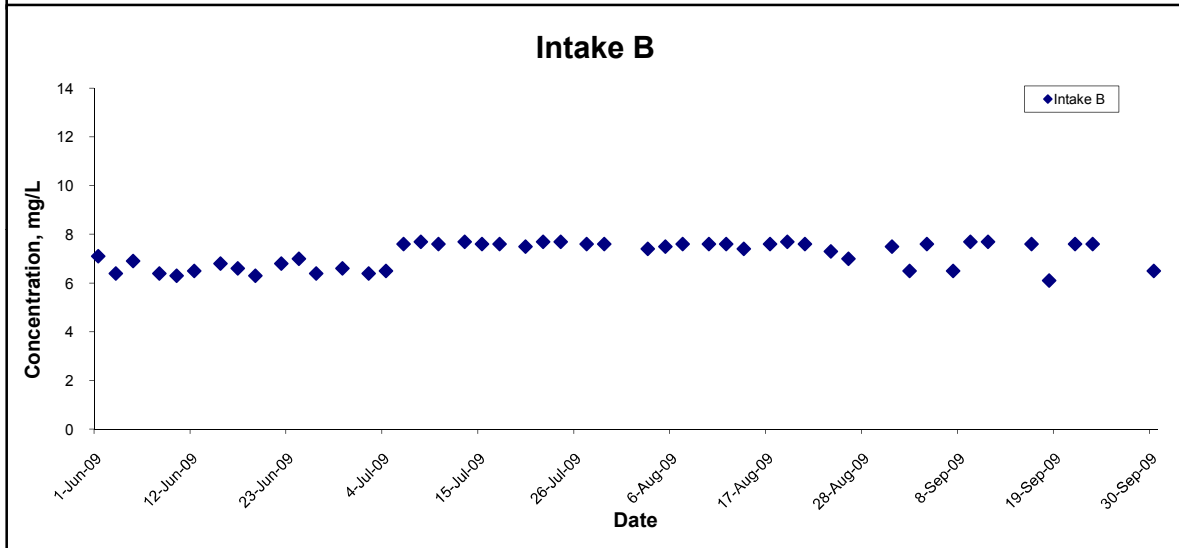
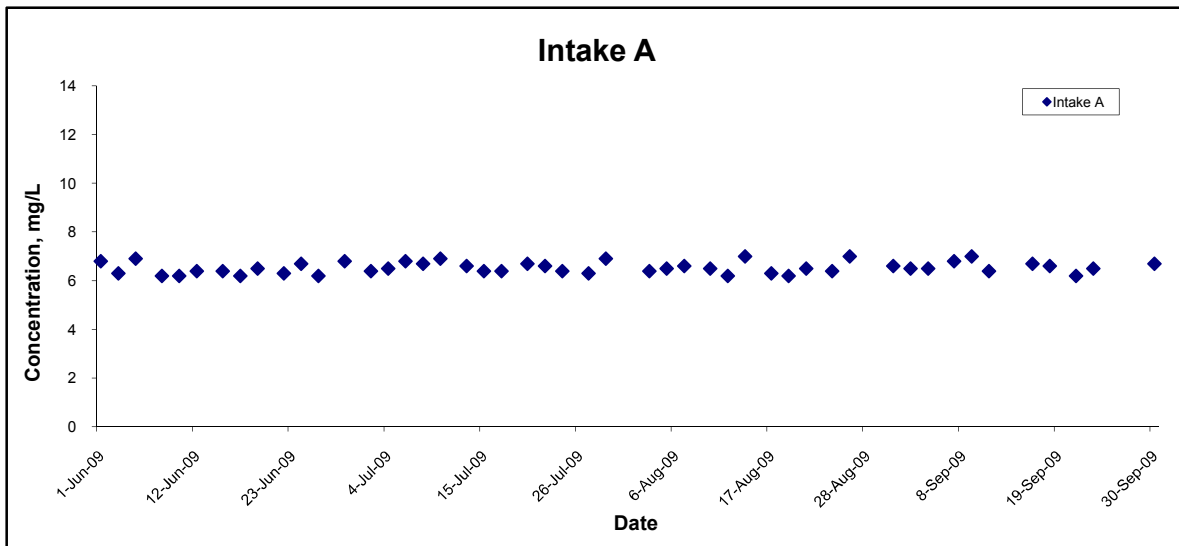
Title Contract No. DC/2007/10 Design and Construction of Hong Kong West Drainage Tunnel Graphical Presentation of Water Quality Monitoring Results	Scale N.T.S	Project No. MA8001	CINOTECH
	Date Sep 09	Appendix H	

Dissolved Oxygen (Bottom) at Mid-Flood Tide



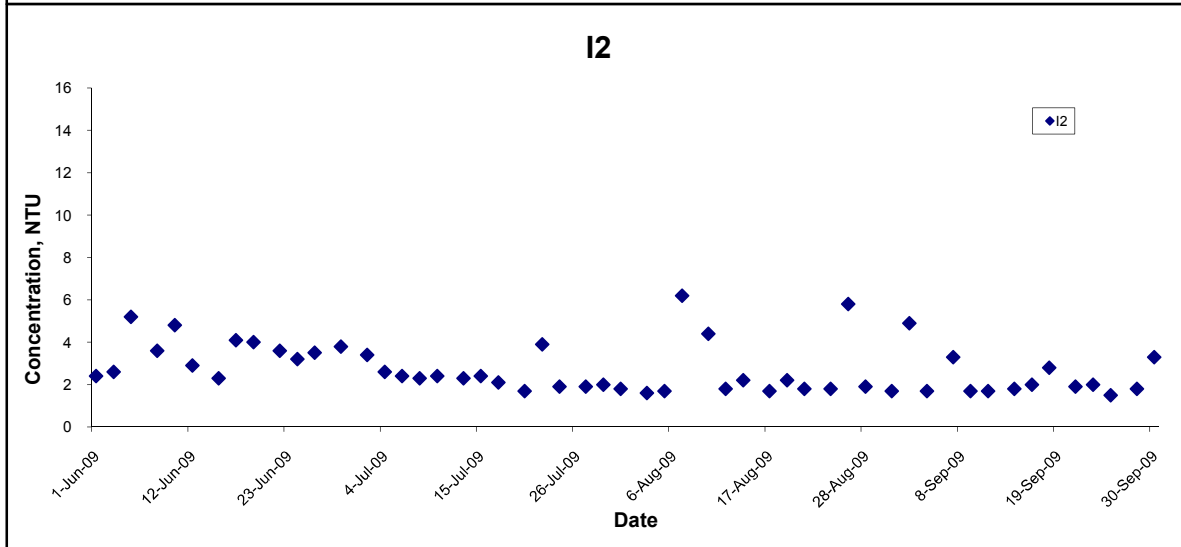
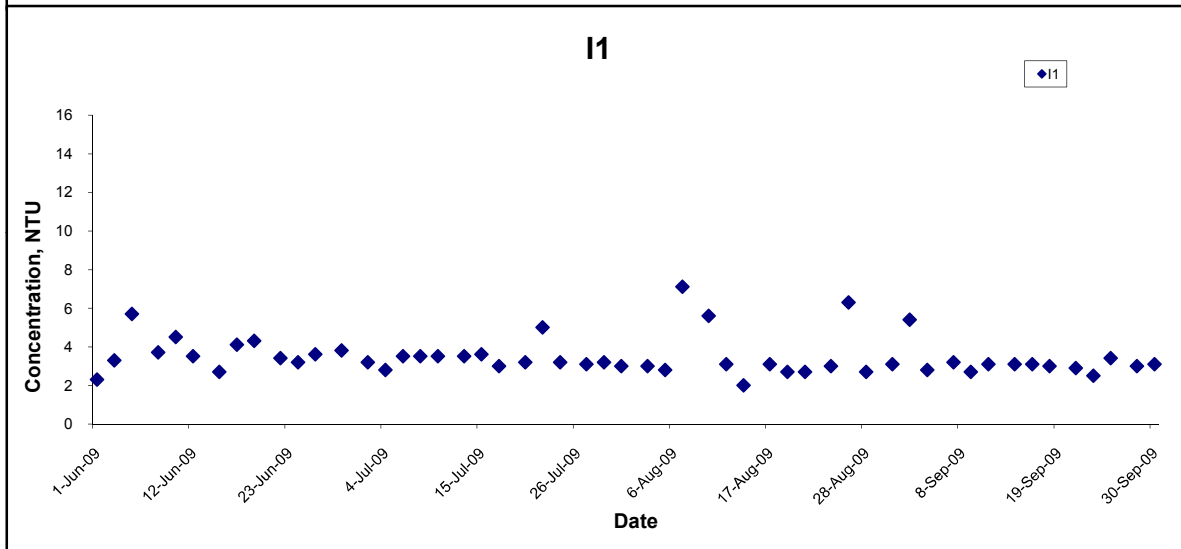
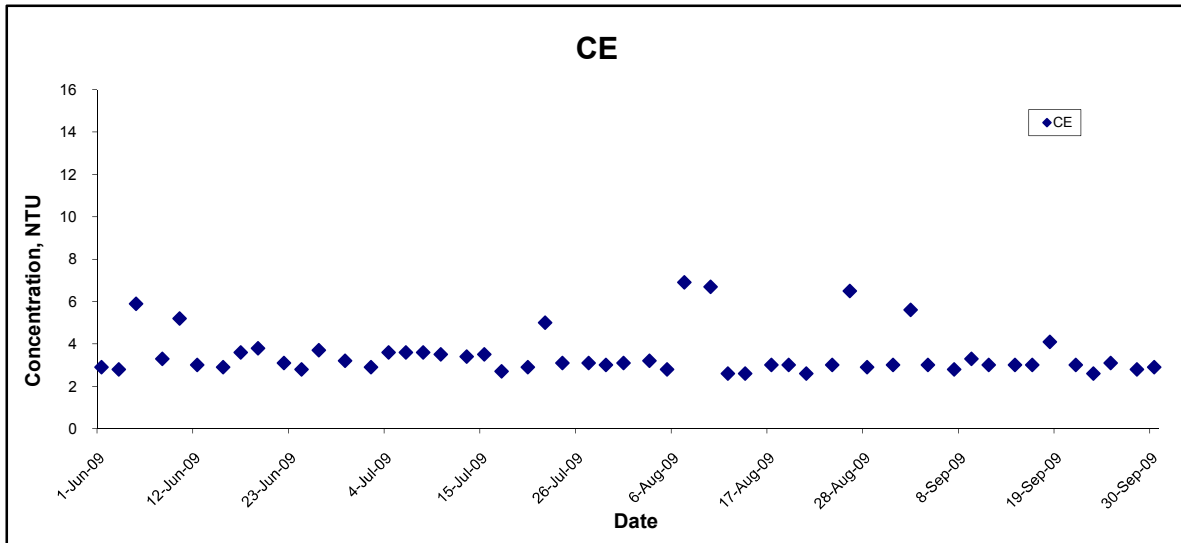
Title Contract No. DC/2007/10 Design and Construction of Hong Kong West Drainage Tunnel Graphical Presentation of Water Quality Monitoring Results	Scale N.T.S	Project No. MA8001	CINOTECH
	Date Sep 09	Appendix H	

Dissolved Oxygen (Bottom) at Mid-Flood Tide



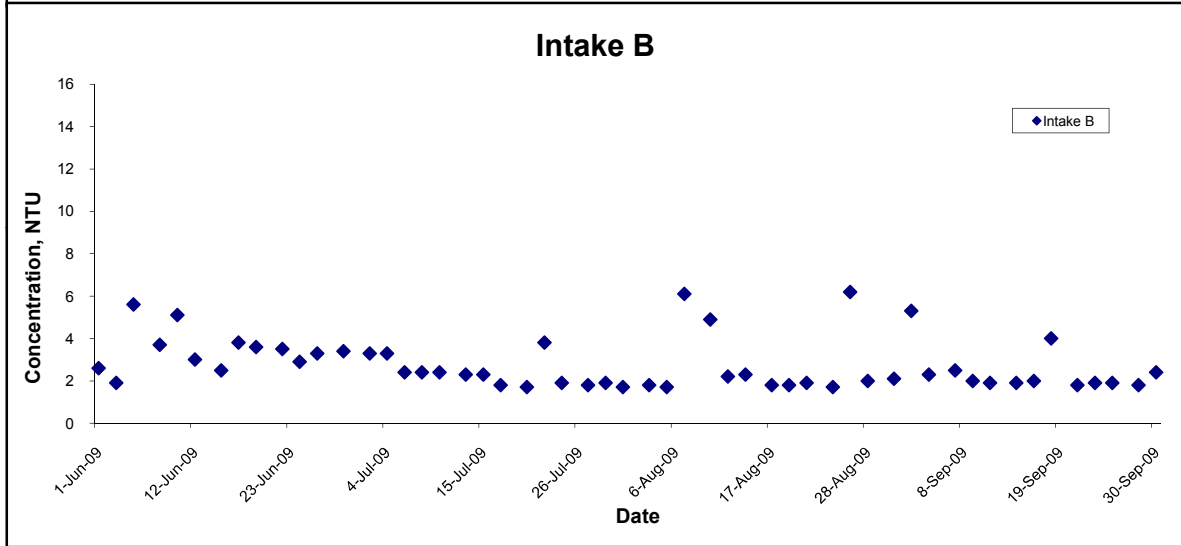
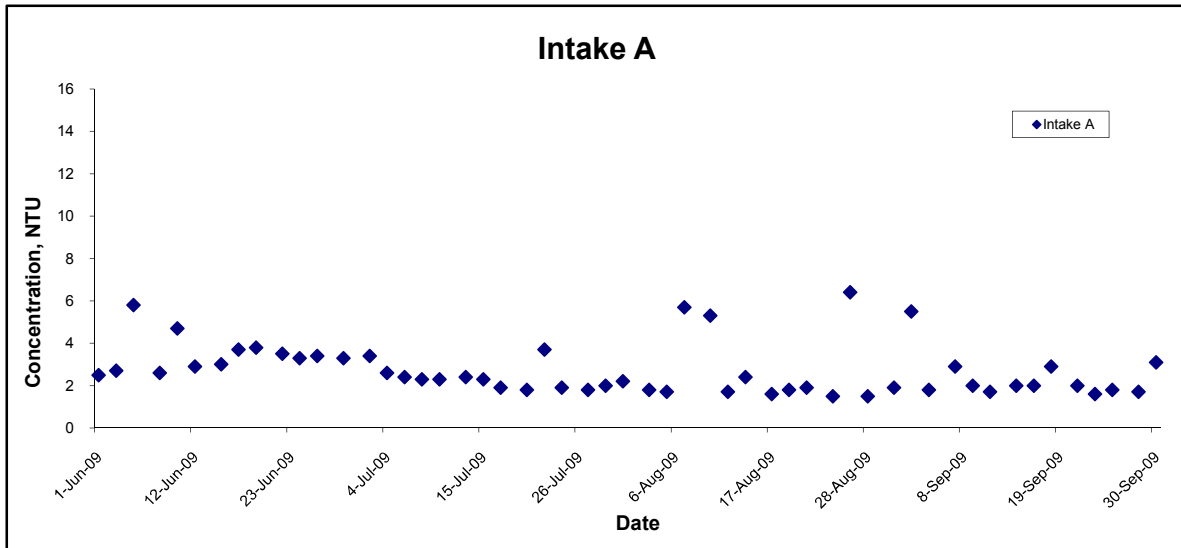
Title Contract No. DC/2007/10 Design and Construction of Hong Kong West Drainage Tunnel Graphical Presentation of Water Quality Monitoring Results	Scale N.T.S	Project No. MA8001	CINOTECH
	Date Sep 09	Appendix H	

Turbidity (Depth-averaged) at Mid-Ebb Tide



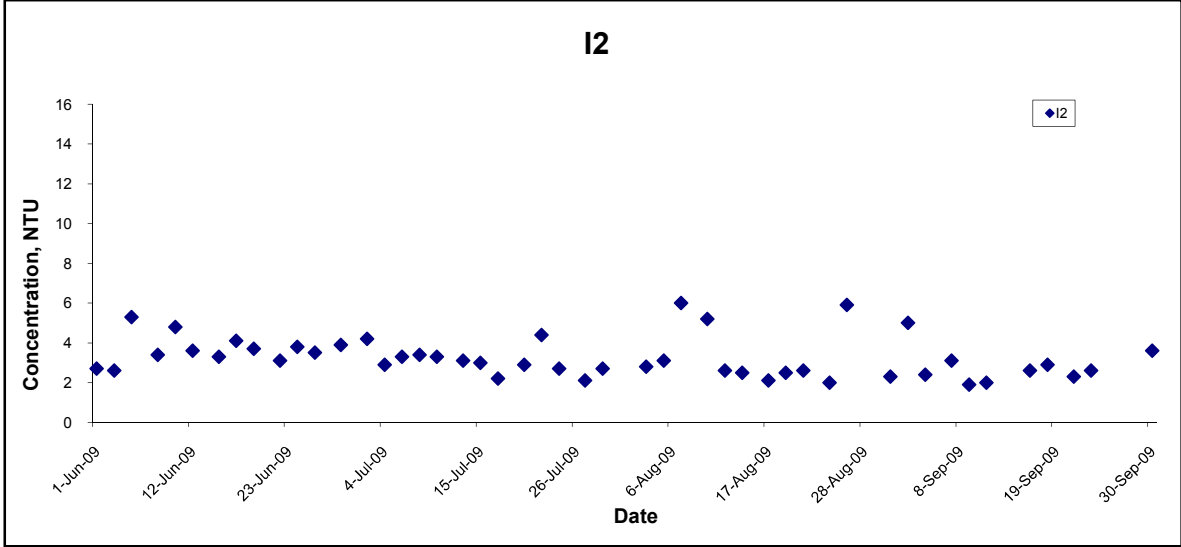
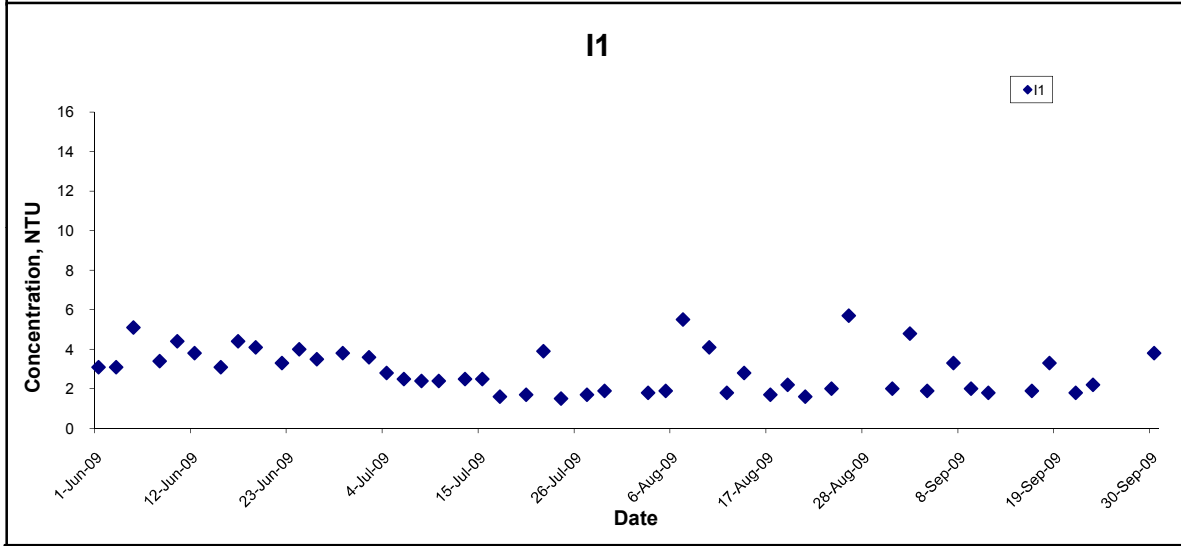
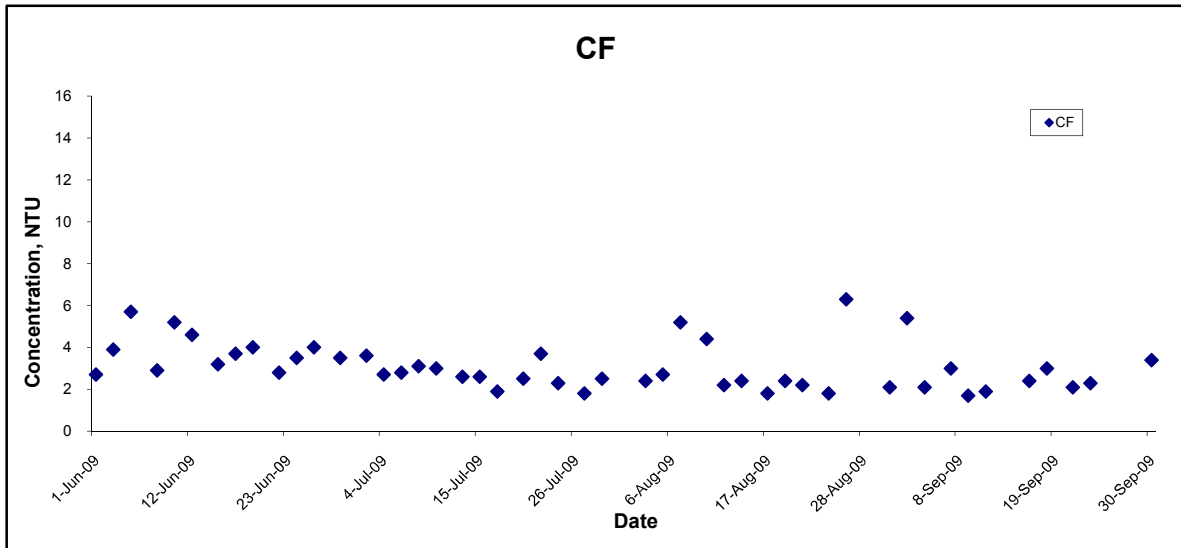
Title Contract No. DC/2007/10 Design and Construction of Hong Kong West Drainage Tunnel Graphical Presentation of Water Quality Monitoring Results	Scale N.T.S	Project No. MA8001	CINOTECH
	Date Sep 09	Appendix H	

Turbidity (Depth-averaged) at Mid-Ebb Tide



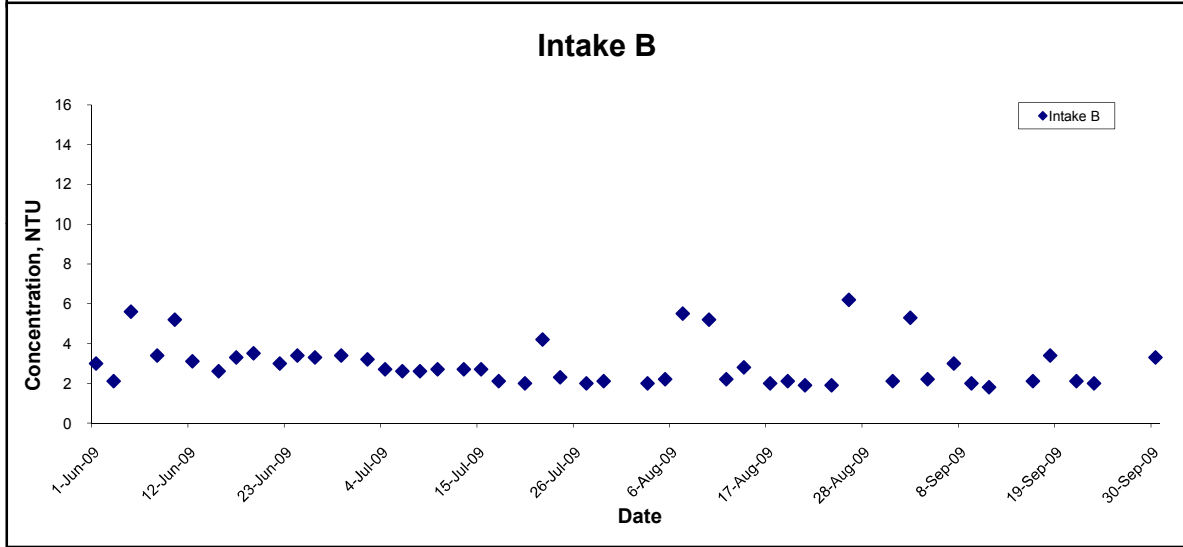
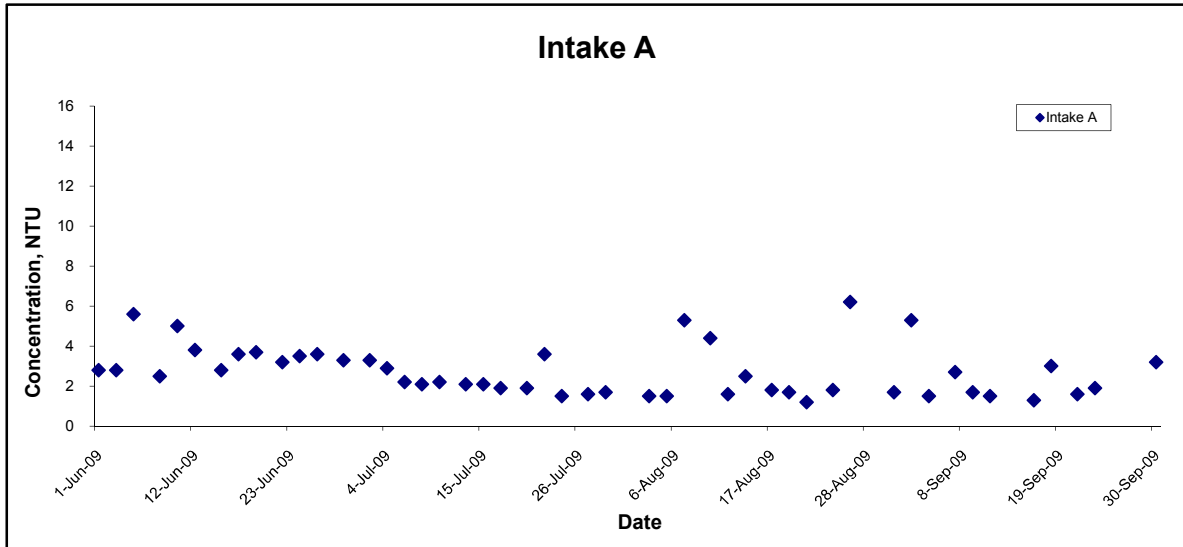
Title Contract No. DC/2007/10 Design and Construction of Hong Kong West Drainage Tunnel Graphical Presentation of Water Quality Monitoring Results	Scale	N.T.S	Project No. MA8001	CINOTECH
	Date	Sep 09	Appendix H	

Turbidity (Depth-averaged) at Mid-Flood Tide



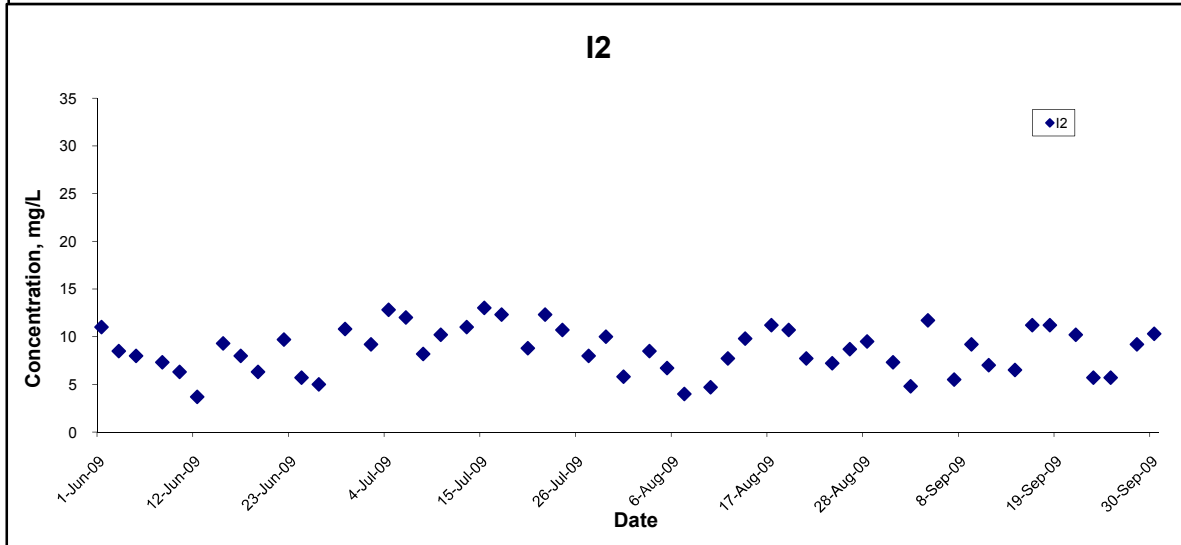
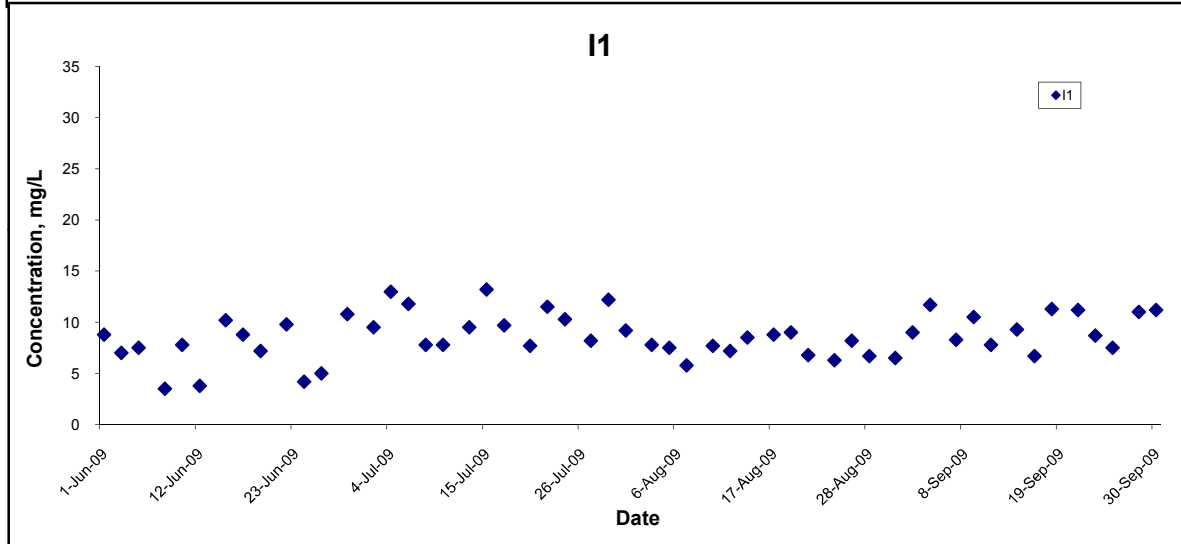
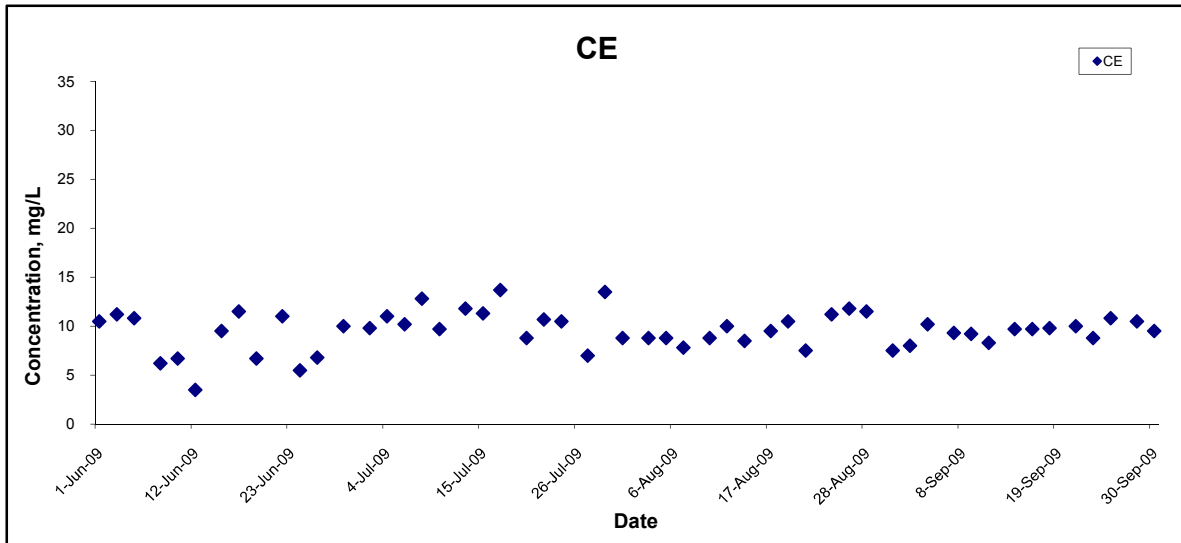
Title Contract No. DC/2007/10 Design and Construction of Hong Kong West Drainage Tunnel Graphical Presentation of Water Quality Monitoring Results	Scale N.T.S	Project No. MA8001	
	Date Sep 09	Appendix H	

Turbidity (Depth-averaged) at Mid-Flood Tide



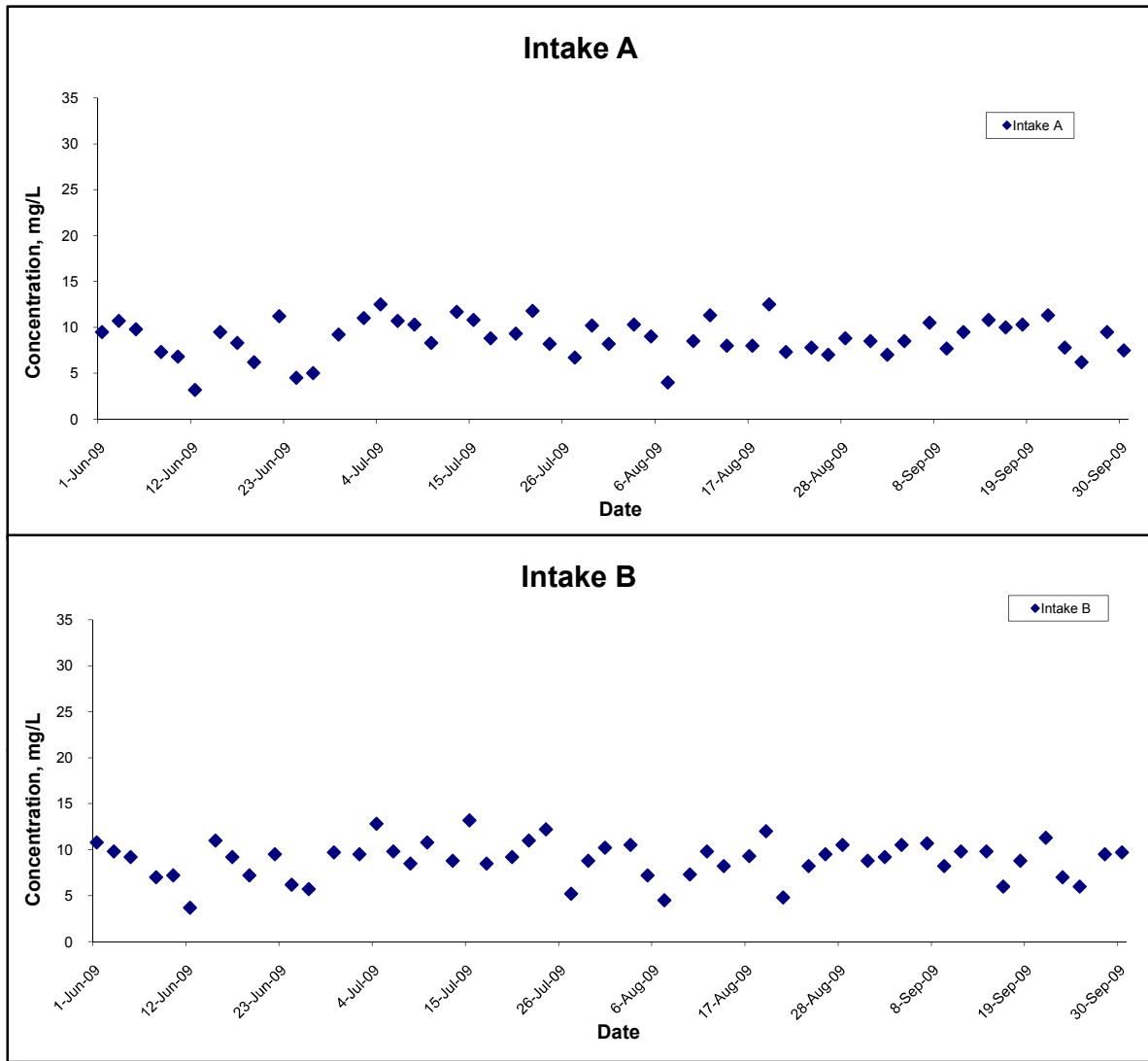
Title Contract No. DC/2007/10 Design and Construction of Hong Kong West Drainage Tunnel Graphical Presentation of Water Quality Monitoring Results	Scale	N.T.S	Project No. MA8001	CINOTECH
	Date	Sep 09	Appendix H	

Suspended Solids (Depth-averaged) at Mid-Ebb Tide



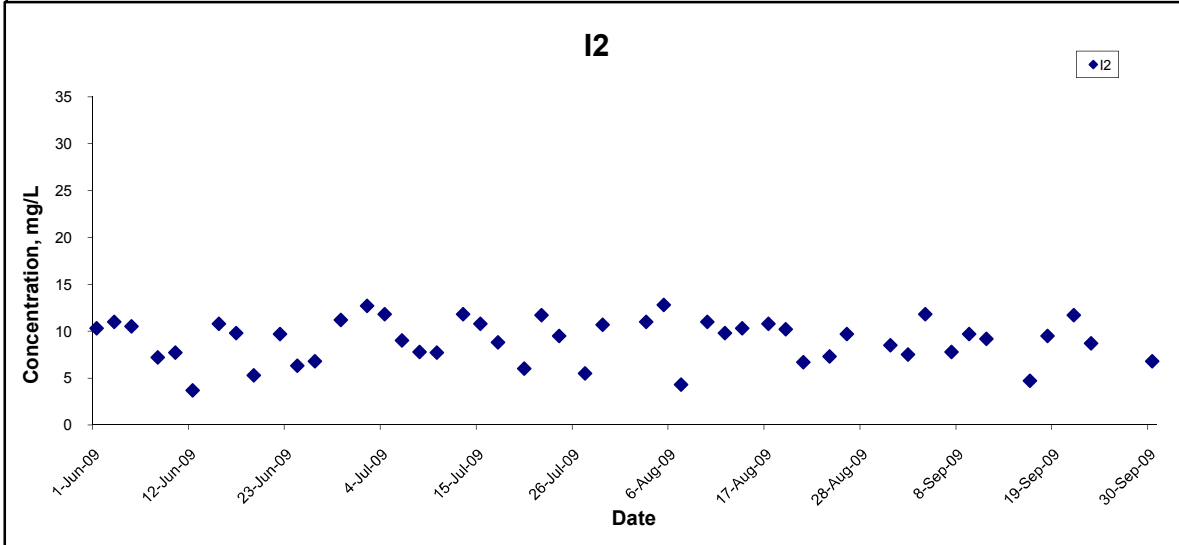
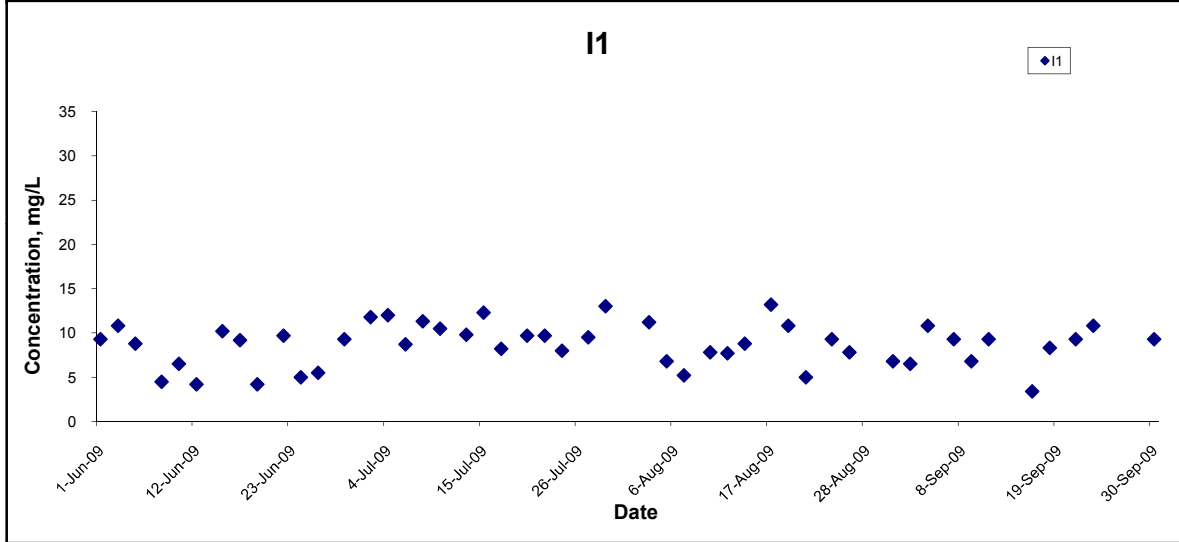
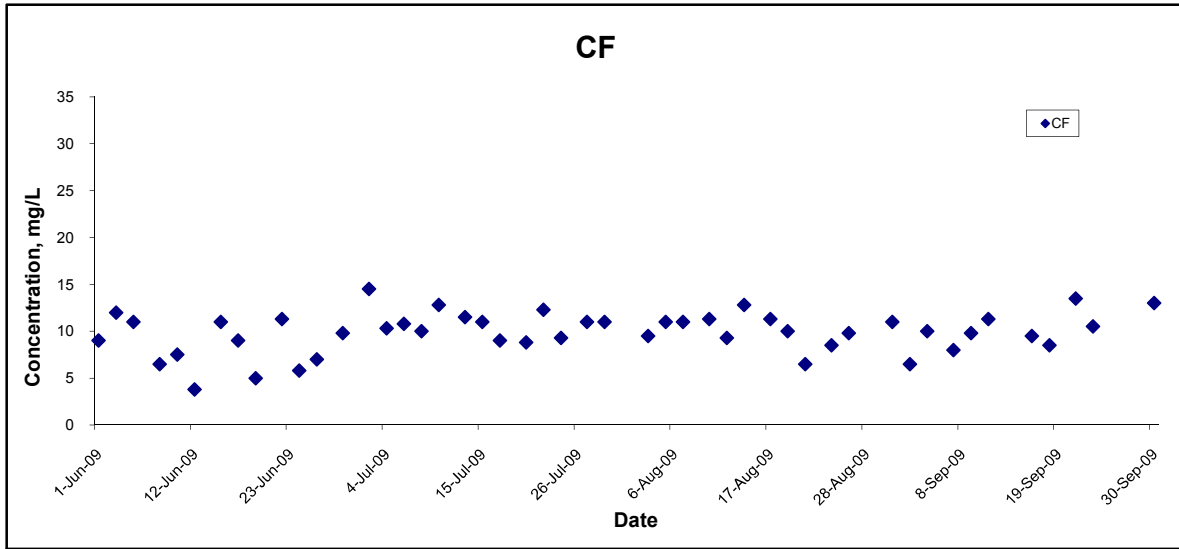
Title Contract No. DC/2007/10 Design and Construction of Hong Kong West Drainage Tunnel Graphical Presentation of Water Quality Monitoring Results	Scale N.T.S	Project No. MA8001	CINOTECH
	Date Sep 09	Appendix H	

Suspended Solids (Depth-averaged) at Mid-Ebb Tide



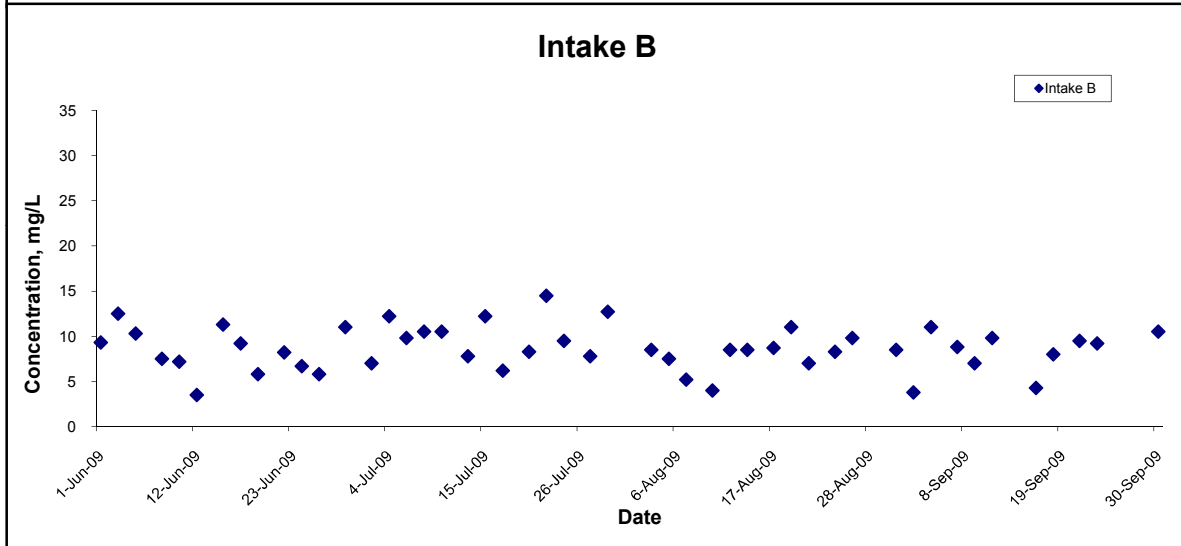
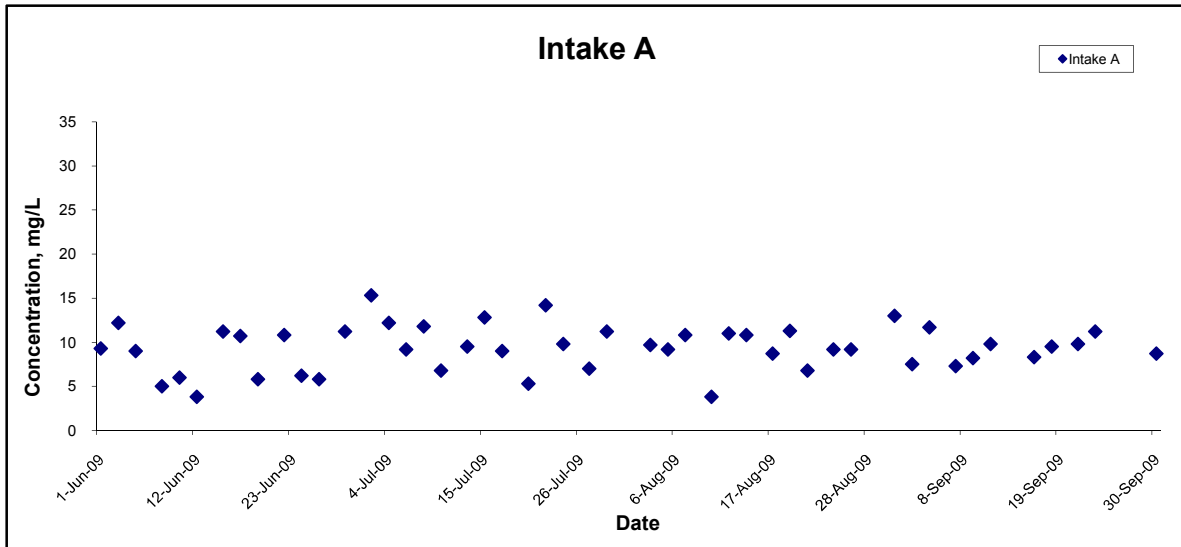
Title Contract No. DC/2007/10 Design and Construction of Hong Kong West Drainage Tunnel Graphical Presentation of Water Quality Monitoring Results	Scale N.T.S	Project No. MA8001	CINOTECH
	Date Sep 09	Appendix H	

Suspended Solids (Depth-averaged) at Mid-Flood Tide



Title Contract No. DC/2007/10 Design and Construction of Hong Kong West Drainage Tunnel Graphical Presentation of Water Quality Monitoring Results	Scale N.T.S	Project No. MA8001	CINOTECH
	Date Sep 09	Appendix H	

Suspended Solids (Depth-averaged) at Mid-Flood Tide



Title Contract No. DC/2007/10 Design and Construction of Hong Kong West Drainage Tunnel Graphical Presentation of Water Quality Monitoring Results	Scale N.T.S	Project No. MA8001	
	Date Sep 09	Appendix H	