

**Water Quality Monitoring Results at CE - Mid-Ebb Tide**

Date	Weather Condition	Sea Condition**	Sampling Time	Depth (m)		Water Temperature (°C)		pH		Salinity ppt		DO Saturation (%)		Dissolved Oxygen (mg/L)			Turbidity(NTU)			Suspended Solids (mg/L)		
						Value	Average	Value	Average	Value	Average	Value	Average	Value	Average	DA*	Value	Average	DA*	Value	Average	DA*
1-Sep-08	Sunny	Calm	13:33	Surface	1	26.7 26.7	26.7	7.2 7.3	7.3	28.4 28.4	28.4	97.3 96.9	97.1	7.0 6.9	7.0	6.6	4.0 4.1	4.1	3.5	5.0 5.0	5.0	7.0
				Middle	5.5	26.8 26.8	26.8	7.8 8.1	8.0	29.0 29.0	29.0	89.8 91.5	90.7	6.1 6.2	6.2		3.3 3.3	3.3		7.0 7.0	7.0	
				Bottom	10	26.9 26.9	26.9	7.7 6.9	7.3	29.0 29.0	29.0	96.6 96.8	96.7	6.6 6.6	6.6		3.3 3.1	3.2		9.0 9.0	9.0	
3-Sep-08	Sunny	Calm	14:00	Surface	1	27.9 27.9	27.9	7.7 7.5	7.6	26.9 26.9	26.9	98.7 106.2	102.5	7.7 7.8	7.8	8.1	4.4 4.4	4.4	3.5	5.0 5.0	5.0	5.0
				Middle	5.5	27.7 27.7	27.7	8.2 7.9	8.1	27.1 27.1	27.1	112.9 112.7	112.8	8.3 8.3	8.3		3.0 3.0	3.0		4.0 4.0	4.0	
				Bottom	10	27.7 27.7	27.7	7.3 7.3	7.3	27.1 27.1	27.1	112.3 112.3	112.3	8.3 8.3	8.3		2.9 3.0	3.0		6.0 6.0	6.0	
5-Sep-08	Rainy	Calm	16:01	Surface	1	27.4 27.6	27.5	7.8 6.9	7.4	28.4 28.3	28.4	99.1 99.5	99.3	6.8 6.9	6.9	7.2	3.1 3.2	3.2	3.9	19.0 19.0	19.0	20.3
				Middle	5.5	26.9 26.8	26.9	8.4 8.4	8.4	28.9 29.1	29.0	110.2 108.5	109.4	7.5 7.2	7.4		3.8 4.0	3.9		22.0 22.0	22.0	
				Bottom	10	26.3 26.2	26.3	7.1 8.0	7.6	29.5 29.5	29.5	90.8 90.1	90.5	6.8 6.6	6.7		4.8 4.6	4.7		20.0 20.0	20.0	
8-Sep-08	Sunny	Calm	08:34	Surface	1	27.5 27.8	27.7	8.2 7.4	7.8	28.7 28.4	28.6	99.3 111.8	105.6	6.9 8.1	7.5	8.0	3.2 3.5	3.4	4.1	9.0 9.0	9.0	10.8
				Middle	5.5	27.0 27.0	27.0	8.8 8.8	8.8	29.0 29.2	29.1	122.5 118.8	120.7	8.6 8.3	8.5		4.0 4.2	4.1		11.0 11.0	11.0	
				Bottom	10	26.5 26.4	26.5	7.5 8.4	8.0	29.7 29.6	29.7	91.1 90.3	90.7	6.3 6.2	6.3		4.9 4.7	4.8		13.0 12.0	12.5	
10-Sep-08	Sunny	Calm	08:34	Surface	1	27.7 27.8	27.8	8.1 7.2	7.7	28.7 28.6	28.7	99.3 111.7	105.5	7.1 8.0	7.6	8.1	3.3 3.4	3.4	4.2	11.0 11.0	11.0	13.0
				Middle	5.5	27.2 27.1	27.2	8.7 8.9	8.8	29.2 29.4	29.3	122.3 118.6	120.5	8.8 8.3	8.6		4.1 4.3	4.2		13.0 13.0	13.0	
				Bottom	10	26.6 26.5	26.6	7.5 8.3	7.9	29.8 29.6	29.7	80.9 80.3	80.6	6.1 5.9	6.0		4.9 4.9	4.9		15.0 15.0	15.0	
12-Sep-08	Sunny	Calm	11:06	Surface	1	27.4 27.4	27.4	7.8 7.0	7.4	28.5 28.5	28.5	110.1 108.8	109.5	7.4 7.3	7.4	6.9	3.3 3.3	3.3	4.1	32.0 32.0	32.0	30.7
				Middle	5.5	25.5 25.4	25.5	8.3 8.4	8.4	31.2 31.3	31.3	98.9 85.7	92.3	6.8 5.9	6.4		4.0 4.1	4.1		22.0 22.0	22.0	
				Bottom	10	25.3 25.3	25.3	7.2 8.0	7.6	31.5 31.5	31.5	71.2 71.4	71.3	4.9 4.9	4.9		4.9 4.8	4.9		38.0 38.0	38.0	
16-Sep-08	Sunny	Calm	13:29	Surface	1	27.2 27.4	27.3	7.7 6.8	7.3	28.2 28.2	28.2	98.8 111.2	105.0	6.7 7.8	7.3	7.7	2.9 2.9	2.9	3.7	13.0 13.0	13.0	13.7
				Middle	5.5	26.8 26.6	26.7	8.3 8.5	8.4	28.7 28.9	28.8	122.0 118.3	120.2	8.3 7.9	8.1		3.7 3.9	3.8		14.0 14.0	14.0	
				Bottom	10	26.0 25.9	26.0	7.1 8.0	7.6	29.4 29.3	29.4	91.7 91.4	91.6	6.2 6.1	6.2		4.5 4.3	4.4		14.0 14.0	14.0	
18-Sep-08	Sunny	Calm	14:46	Surface	1	28.0 28.0	28.0	8.2 7.4	7.8	30.2 30.2	30.2	103.4 101.9	102.7	6.8 6.7	6.8	6.5	3.2 3.4	3.3	4.1	13.0 13.0	13.0	12.3
				Middle	5.5	27.2 27.1	27.2	8.8 8.9	8.9	30.6 30.6	30.6	91.2 91.8	91.5	6.1 6.2	6.2		3.9 4.3	4.1		7.0 7.0	7.0	
				Bottom	10	26.9 27.0	27.0	7.6 8.5	8.1	30.7 30.7	30.7	87.7 87.0	87.4	6.1 6.0	6.1		4.9 4.7	4.8		17.0 17.0	17.0	
20-Sep-08	Sunny	Calm	15:24	Surface	1	28.0 28.0	28.0	9.0 8.1	8.6	30.1 30.2	30.2	97.8 97.9	97.9	6.8 6.8	6.8	6.7	4.3 4.9	4.6	4.2	7.0 7.0	7.0	10.7
				Middle	5.5	27.5 27.5	27.5	8.1 8.1	8.1	30.6 30.6	30.6	92.6 91.8	92.2	6.5 6.4	6.5		4.3 4.5	4.4		8.0 8.0	8.0	
				Bottom	10	27.1 27.1	27.1	8.4 8.1	8.3	30.9 30.8	30.9	86.2 87.3	86.8	6.0 6.1	6.1		3.7 3.5	3.6		17.0 17.0	17.0	

Remarks: \* DA: Depth-Averaged

\*\* Calm: Small or no wave; Moderate: Between calm and rough; Rough : White capped or rougher

### Water Quality Monitoring Results at CE - Mid-Ebb Tide

Date	Weather Condition	Sea Condition**	Sampling Time	Depth (m)		Water Temperature (°C)		pH		Salinity ppt		DO Saturation (%)		Dissolved Oxygen (mg/L)			Turbidity(NTU)			Suspended Solids (mg/L)		
						Value	Average	Value	Average	Value	Average	Value	Average	Value	Average	DA*	Value	Average	DA*	Value	Average	DA*
22-Sep-08	Sunny	Moderate	08:36	Surface	1	27.5 27.9	27.7	8.4 7.7	8.1	28.7 28.5	28.6	99.2 111.6	105.4	7.1 8.0	7.6	8.2	3.3 3.3	3.3	4.1	12.0 12.0	12.0	9.7
				Middle	5.5	27.0 27.1	27.1	9.0 9.0	9.0	29.2 29.2	29.2	122.3 118.6	120.5	8.8 8.5	8.7		4.1 4.2	4.2		8.0 8.0		
				Bottom	10	26.6 26.4	26.5	7.7 8.6	8.2	29.8 29.7	29.8	82.9 80.3	81.6	6.1 5.8	6.0		4.9 4.7	4.8		9.0 9.0		
26-Sep-08	Sunny	Calm	10:19	Surface	1	27.2 27.2	27.2	8.2 8.6	8.4	31.4 31.4	31.4	102.5 103.8	103.2	7.8 7.9	7.9	7.8	3.1 3.8	3.5	4.0	19.0 19.0	19.0	15.5
				Middle	5.5	27.1 27.1	27.1	8.9 8.5	8.7	31.5 31.5	31.5	101.1 100.7	100.9	7.7 7.7	7.7		4.1 4.4	4.3		12.0 13.0	12.5	
				Bottom	10	27.1 27.1	27.1	8.9 8.0	8.5	31.5 31.5	31.5	100.2 99.9	100.1	7.7 7.7	7.7		4.1 4.1	4.1		15.0 15.0		
29-Sep-08	Sunny	Calm	13:07	Surface	1	27.5 27.5	27.5	8.3 7.6	8.0	31.9 31.9	31.9	83.1 78.7	80.9	6.5 6.2	6.4	6.3	6.5 6.3	6.4	7.0	5.0 5.0	5.0	8.7
				Middle	5.5	27.4 27.3	27.4	8.9 8.9	8.9	32.2 32.3	32.3	78.2 78.7	78.5	6.2 6.2	6.2		6.0 5.8	5.9		8.0 8.0		
				Bottom	10	27.3 27.3	27.3	7.8 8.5	8.2	32.3 32.3	32.3	79.0 78.9	79.0	6.2 6.2	6.2		8.6 8.5	8.6		13.0 13.0		

Remarks: \* DA: Depth-Averaged

\*\* Calm: Small or no wave; Moderate: Between calm and rough; Rough : White capped or rougher

### Water Quality Monitoring Results at CF - Mid-Flood Tide

Date	Weather Condition	Sea Condition**	Sampling Time	Depth (m)		Water Temperature (°C)		pH		Salinity ppt		DO Saturation (%)		Dissolved Oxygen (mg/L)			Turbidity(NTU)			Suspended Solids (mg/L)					
						Value	Average	Value	Average	Value	Average	Value	Average	Value	Average	DA*	Value	Average	DA*	Value	Average	DA*			
1-Sep-08	Sunny	Calm	08:15	Surface	1	26.9 26.9	26.9	7.9 8.1	8.0	28.0 28.0	28.0	97.3 97.5	97.4	6.6 6.7	6.7	6.7	4.0 3.7	3.9	3.5	14.0 14.0	14.0	11.3			
				Middle	-	-	-	-	-	-	-	-	-	-	-		-	-		-	-		-	-	-
				Bottom	3	26.9 26.9	26.9	8.0 8.2	8.1	28.1 28.1	28.1	89.5 89.5	89.5	6.1 6.1	6.1		6.1	6.1		3.0 3.0	3.0		9.0 8.0	8.5	
3-Sep-08	Sunny	Calm	08:18	Surface	1	27.7 27.7	27.7	7.7 7.9	7.8	25.5 25.6	25.6	116.1 119.8	118.0	8.5 8.7	8.6	8.6	3.7 3.4	3.6	3.2	5.0 5.0	5.0	7.0			
				Middle	-	-	-	-	-	-	-	-	-	-	-		-	-		-	-		-	-	
				Bottom	3	27.6 27.5	27.6	7.8 8.0	7.9	25.9 26.0	26.0	126.1 126.4	126.3	9.1 9.2	9.2		9.2	9.2		2.8 2.7	2.8		9.0 9.0	9.0	
5-Sep-08	Rainy	Calm	09:45	Surface	1	27.8 27.9	27.9	7.4 7.9	7.7	27.4 27.5	27.5	115.9 115.8	115.9	7.1 7.1	7.1	7.1	2.5 2.4	2.5	3.5	15.0 15.0	15.0	16.0			
				Middle	-	-	-	-	-	-	-	-	-	-	-		-	-		-	-		-	-	
				Bottom	3	27.8 27.6	27.7	8.3 7.9	8.1	27.6 27.5	27.6	112.6 111.5	112.1	6.8 6.8	6.8		6.8	6.8		4.3 4.4	4.4		17.0 17.0	17.0	
8-Sep-08	Sunny	Calm	16:36	Surface	1	27.9 28.1	28.0	7.8 8.4	8.1	27.7 27.6	27.7	146.1 146.1	146.1	10.3 10.4	10.4	10.4	2.6 2.5	2.6	3.1	5.0 5.0	5.0	0.0			
				Middle	-	-	-	-	-	-	-	-	-	-	-		-	-		-	-		-	-	
				Bottom	4	27.9 27.8	27.9	8.8 8.4	8.6	27.8 27.7	27.8	142.8 141.7	142.3	9.9 10.0	10.0		10.0	10.0		3.5 3.6	3.6		15.0 15.0	15.0	
10-Sep-08	Sunny	Calm	17:03	Surface	1	28.1 28.2	28.2	7.9 8.2	8.1	27.6 27.8	27.7	146.2 146.0	146.1	10.4 10.4	10.4	10.4	2.7 2.7	2.7	3.7	9.0 10.0	9.5	12.0			
				Middle	-	-	-	-	-	-	-	-	-	-	-		-	-		-	-		-	-	
				Bottom	4	27.9 27.7	27.8	8.7 8.2	8.5	27.9 27.7	27.8	142.8 141.8	142.3	9.9 9.9	9.9		9.9	9.9		4.6 4.6	4.6		14.0 15.0	14.5	
12-Sep-08	Sunny	Calm	18:05	Surface	1	27.8 27.9	27.9	7.5 8.0	7.8	28.2 28.1	28.2	134.7 132.5	133.6	9.1 8.9	9.0	9.0	4.8 4.6	4.7	4.2	29.0 29.0	29.0	24.0			
				Middle	-	-	-	-	-	-	-	-	-	-	-		-	-		-	-		-	-	
				Bottom	3	27.0 27.0	27.0	8.3 7.8	8.1	28.9 28.9	28.9	114.9 113.8	114.4	7.8 7.7	7.8		7.8	7.8		3.6 3.7	3.7		19.0 19.0	19.0	
16-Sep-08	Sunny	Calm	08:05	Surface	1	27.6 27.6	27.6	7.2 7.9	7.6	27.2 27.4	27.3	145.6 145.7	145.7	9.9 10.0	10.0	10.0	2.2 2.3	2.3	2.2	10.0 10.0	10.0	12.8			
				Middle	-	-	-	-	-	-	-	-	-	-	-		-	-		-	-		-	-	
				Bottom	3	27.5 27.4	27.5	8.3 7.9	8.1	27.5 27.3	27.4	142.5 141.2	141.9	9.5 9.5	9.5		9.5	9.5		2.1 2.1	2.1		15.0 16.0	15.5	
18-Sep-08	Fine	Calm	08:10	Surface	1	27.9 28.0	28.0	7.9 8.2	8.1	30.4 30.4	30.4	96.2 95.9	96.1	6.4 6.3	6.4	6.4	2.8 2.6	2.7	2.7	11.0 11.0	11.0	12.5			
				Middle	-	-	-	-	-	-	-	-	-	-	-		-	-		-	-		-	-	
				Bottom	3	27.9 27.9	27.9	8.6 8.3	8.5	30.4 30.4	30.4	95.2 95.0	95.1	6.3 6.3	6.3		6.3	6.3		2.4 2.7	2.6		14.0 14.0	14.0	
20-Sep-08	Sunny	Calm	10:13	Surface	1	27.2 27.2	27.2	8.5 8.7	8.6	30.5 30.7	30.6	94.6 94.6	94.6	6.6 6.6	6.6	6.6	3.6 3.6	3.6	3.9	9.0 9.0	9.0	12.5			
				Middle	-	-	-	-	-	-	-	-	-	-	-		-	-		-	-		-	-	
				Bottom	3	26.8 26.8	26.8	8.3 8.7	8.5	30.0 30.0	30.0	95.8 94.7	95.3	6.7 6.6	6.7		6.7	6.7		4.0 4.1	4.1		16.0 16.0	16.0	

Remarks: \* DA: Depth-Averaged  
 \*\* Calm: Small or no wave; Moderate: Between calm and rough; Rough : White capped or rougher

### Water Quality Monitoring Results at CF - Mid-Flood Tide

Date	Weather Condition	Sea Condition**	Sampling Time	Depth (m)		Water Temperature (°C)		pH		Salinity ppt		DO Saturation (%)		Dissolved Oxygen (mg/L)			Turbidity(NTU)			Suspended Solids (mg/L)					
						Value	Average	Value	Average	Value	Average	Value	Average	Value	Average	DA*	Value	Average	DA*	Value	Average	DA*			
22-Sep-08	Sunny	Moderate	16:03	Surface	1	28.0	28.0	8.1	8.3	27.7	27.7	119.6	120.3	8.2	8.3	8.3	2.9	3.0	3.6	11.0	10.5	11.8			
				Middle	-	-	-	-	-	-	-	-	-	-	-		-	-		-	-		-	-	-
				Bottom	4	28.0	27.9	9.0	8.8	27.7	27.8	142.9	142.3	9.9	9.9		9.9	4.2		4.2	4.2		13.0	13.0	
24-Sep-08	Fine	Moderate	17:00	Surface	1	26.4	26.4	8.7	8.9	30.8	30.8	118.9	117.9	8.1	8.0	8.0	3.5	3.5	3.6	18.0	18.0	19.5			
				Middle	-	-	-	-	-	-	-	-	-	-	-		-	-		-	-		-	-	-
				Bottom	3	26.4	26.4	8.0	8.4	31.1	31.1	112.8	112.1	7.6	7.6		7.6	3.7		3.6	3.6		21.0	21.0	
26-Sep-08	Fine	Calm	18:04	Surface	1	27.1	27.1	9.1	9.2	31.4	31.4	80.1	80.2	6.3	6.4	6.4	2.5	2.5	3.1	14.0	14.0	12.0			
				Middle	-	-	-	-	-	-	-	-	-	-	-		-	-		-	-		-	-	-
				Bottom	3	27.0	27.0	7.8	8.3	31.5	31.5	77.7	77.7	6.3	6.3		6.3	3.7		3.7	3.7		10.0	10.0	
29-Sep-08	Fine	Calm	17:58	Surface	1	27.3	27.3	8.1	8.4	32.5	32.5	113.6	112.7	8.5	8.5	8.5	8.5	8.5	9.0	7.0	7.0	10.0			
				Middle	-	-	-	-	-	-	-	-	-	-	-		-	-		-	-		-	-	-
				Bottom	3	27.3	27.3	9.0	8.7	32.5	32.5	109.0	108.5	8.2	8.2		8.2	9.4		9.4	9.4		13.0	13.0	

Remarks: \* DA: Depth-Averaged  
 \*\* Calm: Small or no wave; Moderate: Between calm and rough; Rough : White capped or rougher

**Water Quality Monitoring Results at I1 - Mid-Ebb Tide**

Date	Weather Condition	Sea Condition**	Sampling Time	Depth (m)		Water Temperature (°C)		pH		Salinity ppt		DO Saturation (%)		Dissolved Oxygen (mg/L)			Turbidity(NTU)			Suspended Solids (mg/L)		
						Value	Average	Value	Average	Value	Average	Value	Average	Value	Average	DA*	Value	Average	DA*	Value	Average	DA*
1-Sep-08	Sunny	Calm	13:51	Surface	1	27.1 27.0	27.1	8.3 7.9	8.1	28.6 28.7	28.7	100.0 100.4	100.2	6.8 6.8	6.8	6.8	2.7 2.7	2.7	2.8	6.0 5.0	5.5	5.7
				Middle	4.5	26.9 26.9	26.9	7.9 7.5	7.7	28.8 28.8	28.8	97.9 98.0	98.0	6.7 6.7	6.7		2.7 2.8	2.8		6.0 6.0	6.0	
				Bottom	8	26.6 26.6	26.6	8.2 7.9	8.1	29.0 29.0	29.0	97.0 97.0	97.0	6.6 6.6	6.6		2.9 2.9	2.9		5.0 6.0	5.5	
3-Sep-08	Sunny	Calm	13:43	Surface	1	28.2 28.1	28.2	8.1 7.7	7.9	26.3 26.4	26.4	102.3 107.5	104.9	7.6 7.9	7.8	8.1	5.5 4.6	5.1	3.8	5.0 5.0	5.0	4.0
				Middle	4.5	27.7 27.6	27.7	7.7 7.3	7.5	26.9 26.9	26.9	113.6 111.9	112.8	8.4 8.3	8.4		3.2 3.1	3.2		4.0 4.0	4.0	
				Bottom	8	26.8 26.7	26.8	8.0 7.7	7.9	28.6 28.7	28.7	90.6 88.4	89.5	6.9 6.7	6.8		3.0 3.0	3.0		3.0 3.0	3.0	
5-Sep-08	Rainy	Calm	15:47	Surface	1	27.7 27.7	27.7	7.4 8.0	7.7	27.6 27.6	27.6	103.4 108.7	106.1	7.1 7.5	7.3	6.8	2.4 2.4	2.4	2.8	11.0 12.0	11.5	19.2
				Middle	4.5	26.9 27.1	27.0	7.3 7.5	7.4	28.0 28.0	28.0	95.6 94.8	95.2	6.2 6.1	6.2		2.7 2.6	2.7		18.0 18.0	18.0	
				Bottom	8	26.6 26.3	26.5	7.9 7.9	7.9	28.8 29.4	29.1	98.1 98.1	98.1	6.7 6.2	6.5		3.0 3.5	3.3		28.0 28.0	28.0	
8-Sep-08	Sunny	Calm	08:19	Surface	1	27.8 27.9	27.9	7.9 8.5	8.2	27.8 27.7	27.8	133.6 139.0	136.3	9.2 9.8	9.5	9.0	2.7 2.7	2.7	3.0	9.0 8.0	8.5	12.8
				Middle	4.5	27.2 27.2	27.2	7.6 8.0	7.8	28.1 28.3	28.2	117.9 114.9	116.4	8.4 8.4	8.4		3.0 2.7	2.9		14.0 14.0	14.0	
				Bottom	8	26.7 26.6	26.7	8.4 8.4	8.4	28.9 29.6	29.3	107.3 100.3	103.8	8.0 7.5	7.8		3.2 3.8	3.5		16.0 16.0	16.0	
10-Sep-08	Sunny	Calm	08:20	Surface	1	27.9 27.9	27.9	7.9 8.3	8.1	27.9 27.7	27.8	133.5 139.0	136.3	9.2 9.7	9.5	9.0	2.6 2.6	2.6	3.0	7.0 7.0	7.0	10.2
				Middle	4.5	27.0 27.3	27.2	7.7 7.9	7.8	28.2 28.1	28.2	117.7 114.9	116.3	8.5 8.3	8.4		3.0 2.9	3.0		8.0 8.0	8.0	
				Bottom	8	26.8 26.6	26.7	8.3 8.2	8.3	28.9 29.7	29.3	107.4 100.2	103.8	7.9 7.4	7.7		3.2 3.6	3.4		15.0 16.0	15.5	
12-Sep-08	Sunny	Calm	10:52	Surface	1	28.0 28.0	28.0	7.4 8.0	7.7	27.5 27.5	27.5	124.6 125.0	124.8	8.4 8.4	8.4	8.4	2.5 2.5	2.5	3.0	26.0 26.0	26.0	24.3
				Middle	4.5	27.7 27.5	27.6	7.2 7.4	7.3	28.0 28.3	28.2	124.5 120.0	122.3	8.4 8.1	8.3		3.0 2.9	3.0		29.0 29.0	29.0	
				Bottom	8	26.2 26.0	26.1	8.0 7.9	8.0	30.2 30.5	30.4	109.9 104.5	107.2	7.5 7.1	7.3		3.3 3.6	3.5		18.0 18.0	18.0	
16-Sep-08	Sunny	Calm	13:16	Surface	1	27.6 27.4	27.5	7.3 7.8	7.6	27.3 27.4	27.4	133.3 138.5	135.9	9.0 9.2	9.1	8.5	2.1 2.3	2.2	2.6	17.0 17.0	17.0	12.7
				Middle	4.5	26.7 26.9	26.8	7.1 7.6	7.4	27.8 27.8	27.8	117.3 114.5	115.9	8.0 7.8	7.9		2.4 2.3	2.4		7.0 7.0	7.0	
				Bottom	8	26.4 26.1	26.3	7.8 7.8	7.8	28.5 29.3	28.9	100.9 99.8	100.4	7.0 6.9	7.0		2.9 3.4	3.2		14.0 14.0	14.0	
18-Sep-08	Sunny	Calm	14:32	Surface	1	27.9 27.9	27.9	7.9 8.3	8.1	30.2 30.2	30.2	101.7 97.2	99.5	6.7 6.5	6.6	6.4	2.5 2.6	2.6	3.0	7.0 8.0	7.5	12.3
				Middle	4.5	27.6 27.6	27.6	7.6 7.8	7.7	30.3 30.3	30.3	93.6 92.8	93.2	6.2 6.2	6.2		2.9 2.7	2.8		14.0 14.0	14.0	
				Bottom	8	27.3 27.3	27.3	8.2 8.3	8.3	30.4 30.5	30.5	91.6 91.6	91.6	6.1 6.1	6.1		3.2 3.8	3.5		16.0 15.0	15.5	
20-Sep-08	Sunny	Calm	15:55	Surface	1	27.7 27.6	27.7	8.8 8.3	8.6	30.5 30.5	30.5	96.2 96.3	96.3	6.9 6.9	6.9	6.6	4.5 4.6	4.6	4.4	9.0 9.0	9.0	10.2
				Middle	4.5	27.1 27.1	27.1	8.9 8.5	8.7	30.2 30.2	30.2	86.9 85.8	86.4	6.2 6.2	6.2		4.4 4.2	4.3		8.0 8.0	8.0	
				Bottom	8	26.5 26.5	26.5	8.1 7.9	8.0	30.3 30.3	30.3	81.9 80.1	81.0	6.0 6.1	6.1		4.2 4.4	4.3		13.0 14.0	13.5	

Remarks: \* DA: Depth-Averaged  
 \*\* Calm: Small or no wave; Moderate: Between calm and rough; Rough : White capped or rougher

### Water Quality Monitoring Results at I1 - Mid-Ebb Tide

Date	Weather Condition	Sea Condition**	Sampling Time	Depth (m)		Water Temperature (°C)		pH		Salinity ppt		DO Saturation (%)		Dissolved Oxygen (mg/L)			Turbidity(NTU)			Suspended Solids (mg/L)		
						Value	Average	Value	Average	Value	Average	Value	Average	Value	Average	DA*	Value	Average	DA*	Value	Average	DA*
22-Sep-08	Sunny	Moderate	08:22	Surface	1	28.0 28.0	28.0	8.1 8.7	8.4	27.7 27.8	27.8	133.5 139.0	136.3	9.3 9.6	9.5	9.0	2.7 2.7	2.7	3.1	11.0 11.0	11.0	11.2
				Middle	4.5	27.2 27.4	27.3	8.0 8.2	8.1	28.2 28.1	28.2	117.7 115.0	116.4	8.5 8.2	8.4		3.0 2.9	3.0		9.0 9.0	9.0	
				Bottom	8	26.9 26.6	26.8	8.5 8.6	8.6	28.9 29.6	29.3	107.3 100.3	103.8	7.9 7.5	7.7		3.3 3.8	3.6		13.0 14.0	13.5	
26-Sep-08	Sunny	Calm	10:39	Surface	1	27.3 27.3	27.3	8.8 8.9	8.9	31.5 31.4	31.5	96.1 95.0	95.6	7.4 7.3	7.4	7.3	2.4 2.3	2.4	2.3	12.0 12.0	12.0	11.7
				Middle	4.5	27.3 27.3	27.3	8.3 8.3	8.3	31.5 31.5	31.5	92.1 92.2	92.2	7.1 7.1	7.1		2.4 2.3	2.4		11.0 11.0	11.0	
				Bottom	8	27.1 27.0	27.1	8.8 8.3	8.6	31.5 31.6	31.6	91.0 90.8	90.9	7.1 7.1	7.1		2.2 2.2	2.2		12.0 12.0	12.0	
29-Sep-08	Sunny	Calm	12:43	Surface	1	27.4 27.3	27.4	8.1 8.7	8.4	32.1 32.1	32.1	90.1 89.1	89.6	7.0 6.9	7.0	6.9	5.3 5.4	5.4	5.6	6.0 6.0	6.0	7.3
				Middle	4.5	27.2 27.2	27.2	7.8 8.1	8.0	32.2 32.2	32.2	86.8 86.6	86.7	6.8 6.8	6.8		5.6 5.7	5.7		8.0 8.0	8.0	
				Bottom	8	27.2 27.2	27.2	8.4 8.6	8.5	32.3 32.3	32.3	86.2 86.2	86.2	6.7 6.7	6.7		5.6 5.8	5.7		8.0 8.0	8.0	

Remarks: \* DA: Depth-Averaged

\*\* Calm: Small or no wave; Moderate: Between calm and rough; Rough : White capped or rougher

### Water Quality Monitoring Results at I1 - Mid-Flood Tide

Date	Weather Condition	Sea Condition**	Sampling Time	Depth (m)	Water Temperature (°C)		pH		Salinity ppt		DO Saturation (%)		Dissolved Oxygen (mg/L)			Turbidity(NTU)			Suspended Solids (mg/L)			
					Value	Average	Value	Average	Value	Average	Value	Average	Value	Average	DA*	Value	Average	DA*	Value	Average	DA*	
1-Sep-08	Sunny	Calm	08:52	Surface	1	27.1 27.1	27.1	7.5 8.1	7.8	28.6 28.7	28.7	98.0 98.8	98.4	6.6 6.7	6.7	6.8	2.8 2.9	2.9	2.9	7.0 7.0	7.0	8.3
				Middle	4.5	27.0 27.0	27.0	7.4 7.3	7.4	28.7 28.7	28.7	99.7 99.4	99.6	6.8 6.8	6.8		2.9 2.9	2.9		7.0 7.0	7.0	
				Bottom	8	26.6 26.5	26.6	8.3 8.4	8.4	29.1 29.2	29.2	97.6 97.7	97.7	6.7 6.7	6.7		2.9 3.1	3.0		11.0 11.0	11.0	
3-Sep-08	Sunny	Calm	08:38	Surface	1	27.3 27.3	27.3	7.9 7.2	7.6	26.3 26.3	26.3	96.3 103.6	100.0	7.2 7.6	7.4	7.9	2.9 2.8	2.9	2.9	6.0 5.0	5.5	5.8
				Middle	4.5	27.6 27.6	27.6	7.1 8.1	7.6	27.0 27.1	27.1	112.5 112.6	112.6	8.3 8.3	8.3		2.7 2.7	2.7		5.0 5.0	5.0	
				Bottom	8	27.0 26.9	27.0	8.2 8.1	8.2	28.4 28.4	28.4	102.5 97.9	100.2	7.7 7.3	7.5		3.0 3.0	3.0		7.0 7.0	7.0	
5-Sep-08	Rainy	Calm	10:11	Surface	1	27.6 27.6	27.6	7.3 7.5	7.4	27.9 27.7	27.8	110.6 108.6	109.6	8.0 7.7	7.9	8.1	2.9 2.7	2.8	3.1	13.0 13.0	13.0	15.0
				Middle	4.5	26.8 26.5	26.7	8.0 7.3	7.7	28.6 28.9	28.8	125.2 106.9	116.1	8.7 7.7	8.2		2.8 3.0	2.9		22.0 22.0	22.0	
				Bottom	8	26.1 26.1	26.1	7.4 8.2	7.8	29.5 29.7	29.6	88.9 85.3	87.1	6.5 6.2	6.4		3.3 3.8	3.6		10.0 10.0	10.0	
8-Sep-08	Sunny	Calm	17:02	Surface	1	27.8 27.7	27.8	7.6 7.9	7.8	28.0 27.9	28.0	108.7 108.7	108.7	7.8 7.8	7.8	8.1	3.2 2.9	3.1	3.3	11.0 11.0	11.0	12.8
				Middle	4.5	26.9 26.6	26.8	8.5 7.6	8.1	28.7 29.0	28.9	125.3 107.2	116.3	9.0 7.8	8.4		2.9 3.1	3.0		10.0 10.0	10.0	
				Bottom	8	26.4 26.3	26.4	7.8 8.7	8.3	29.7 29.8	29.8	89.2 72.6	80.9	6.8 5.5	6.2		3.4 4.1	3.8		7.0 7.0	7.0	
10-Sep-08	Sunny	Calm	17:28	Surface	1	27.8 27.8	27.8	7.8 7.8	7.8	28.1 28.0	28.1	108.7 108.7	108.7	8.0 8.0	8.0	8.2	3.0 2.8	2.9	3.3	14.0 13.0	13.5	13.7
				Middle	4.5	26.9 26.7	26.8	8.4 7.6	8.0	28.9 29.2	29.1	125.5 107.1	116.3	8.9 7.9	8.4		3.1 3.2	3.2		12.0 11.0	11.5	
				Bottom	8	26.4 26.2	26.3	7.8 8.7	8.3	29.8 29.8	29.8	89.0 72.5	80.8	6.8 5.5	6.2		3.4 3.9	3.7		16.0 16.0	16.0	
12-Sep-08	Sunny	Calm	18:31	Surface	1	27.8 27.8	27.8	7.4 7.6	7.5	27.8 27.9	27.9	109.2 112.2	110.7	7.3 7.6	7.5	7.8	3.0 3.0	3.0	3.3	15.0 16.0	15.5	22.2
				Middle	4.5	27.4 26.8	27.1	8.0 7.4	7.7	28.7 29.3	29.0	118.0 115.9	117.0	8.0 7.9	8.0		2.9 3.2	3.1		26.0 26.0	26.0	
				Bottom	8	26.2 26.1	26.2	7.4 8.3	7.9	30.2 30.3	30.3	101.5 97.9	99.7	6.9 6.7	6.8		3.5 4.0	3.8		25.0 25.0	25.0	
16-Sep-08	Sunny	Calm	08:28	Surface	1	27.4 27.5	27.5	7.4 7.4	7.4	27.8 27.6	27.7	108.4 108.4	108.4	7.6 7.6	7.6	7.8	2.0 2.0	2.0	2.5	4.0 4.0	4.0	8.0
				Middle	4.5	26.6 26.2	26.4	8.0 7.2	7.6	28.4 28.7	28.6	125.1 106.8	116.0	8.4 7.6	8.0		2.3 2.4	2.4		11.0 12.0	11.5	
				Bottom	8	25.9 25.9	25.9	7.4 8.1	7.8	29.3 29.4	29.4	88.6 87.3	88.0	6.2 6.0	6.1		3.1 3.1	3.1		9.0 9.0	8.5	
18-Sep-08	Fine	Calm	08:36	Surface	1	27.8 27.8	27.8	7.8 7.9	7.9	30.2 30.2	30.2	98.6 98.1	98.4	6.6 6.5	6.6	6.5	2.3 2.3	2.3	3.0	14.0 14.0	14.0	14.8
				Middle	4.5	27.7 27.6	27.7	8.4 7.6	8.0	30.3 30.3	30.3	92.5 92.0	92.3	6.3 6.3	6.3		3.0 3.2	3.1		10.0 10.0	10.0	
				Bottom	8	27.5 27.4	27.5	7.7 8.6	8.2	30.4 30.4	30.4	90.6 90.7	90.7	6.2 6.2	6.2		3.5 3.9	3.7		20.0 21.0	20.5	
20-Sep-08	Sunny	Calm	09:55	Surface	1	26.7 26.7	26.7	8.8 8.4	8.6	31.2 31.2	31.2	91.8 91.7	91.8	6.5 6.5	6.5	6.4	3.2 3.4	3.3	4.6	7.0 7.0	7.0	7.5
				Middle	4.5	26.0 26.0	26.0	7.6 8.6	8.1	30.1 30.2	30.2	85.4 78.7	82.1	6.2 6.2	6.2		5.1 5.3	5.2		6.0 7.0	6.5	
				Bottom	8	25.4 25.3	25.4	8.7 8.1	8.4	30.5 30.5	30.5	80.4 80.4	80.4	6.1 6.1	6.1		5.7 5.1	5.4		9.0 9.0	9.0	

Remarks: \* DA: Depth-Averaged  
 \*\* Calm: Small or no wave; Moderate: Between calm and rough; Rough : White capped or rougher

**Water Quality Monitoring Results at I1 - Mid-Flood Tide**

Date	Weather Condition	Sea Condition**	Sampling Time	Depth (m)		Water Temperature (°C)		pH		Salinity ppt		DO Saturation (%)		Dissolved Oxygen (mg/L)			Turbidity(NTU)			Suspended Solids (mg/L)		
						Value	Average	Value	Average	Value	Average	Value	Average	Value	Average	DA*	Value	Average	DA*	Value	Average	DA*
22-Sep-08	Sunny	Moderate	16:28	Surface	1	27.9 27.7	27.8	7.9 8.3	8.1	28.1 27.8	28.0	108.7 108.7	108.7	7.9 7.9	7.9	8.1	3.2 2.9	3.1	3.3	8.0 8.0	8.0	8.5
				Middle	4.5	27.0 26.6	26.8	8.8 8.0	8.4	28.8 29.1	29.0	125.5 107.1	116.3	8.8 7.8	8.3		2.9 3.1	3.0		4.0 5.0	4.5	
				Bottom	8	26.3 26.2	26.3	8.2 8.8	8.5	29.7 29.8	29.8	89.2 72.5	80.9	6.6 5.5	6.1		6.1	3.4 4.0		3.7	13.0 13.0	
24-Sep-08	Fine	Moderate	17:22	Surface	1	26.4 26.4	26.4	8.3 8.7	8.5	30.7 30.8	30.8	102.7 97.1	99.9	7.0 6.6	6.8	6.5	3.1 3.1	3.1	4.0	24.0 24.0	24.0	33.5
				Middle	4.5	26.3 26.3	26.3	8.7 7.6	8.2	31.3 31.3	31.3	91.6 90.8	91.2	6.2 6.2	6.2		4.4 4.5	4.5		38.0 38.0	38.0	
				Bottom	8	26.3 26.3	26.3	8.2 8.6	8.4	31.3 31.3	31.3	89.5 89.5	89.5	6.0 6.0	6.0		6.0	4.3 4.3		4.3	39.0 38.0	
26-Sep-08	Fine	Calm	17:42	Surface	1	27.4 27.4	27.4	8.2 8.2	8.2	31.5 31.5	31.5	90.3 90.2	90.3	7.0 7.0	7.0	7.0	2.5 2.4	2.5	2.4	9.0 9.0	9.0	11.7
				Middle	4.5	27.2 27.1	27.2	8.4 8.3	8.4	31.5 31.5	31.5	90.0 89.8	89.9	7.0 7.0	7.0		2.3 2.2	2.3		13.0 13.0	13.0	
				Bottom	8	27.1 27.1	27.1	8.6 8.9	8.8	31.6 31.5	31.6	87.4 87.4	87.4	6.8 6.8	6.8		6.8	2.2 2.3		2.3	13.0 13.0	
29-Sep-08	Fine	Calm	18:28	Surface	1	27.4 27.3	27.4	8.0 8.2	8.1	32.1 32.1	32.1	84.1 83.1	83.6	6.6 6.5	6.6	6.6	5.5 5.5	5.5	5.7	5.0 5.0	5.0	7.8
				Middle	4.5	27.2 27.2	27.2	8.5 7.8	8.2	32.3 32.3	32.3	83.3 83.3	83.3	6.5 6.5	6.5		5.8 6.1	6.0		9.0 10.0	9.5	
				Bottom	8	27.2 27.2	27.2	8.1 8.9	8.5	32.3 32.3	32.3	83.2 83.1	83.2	6.5 6.5	6.5		6.5	5.7 5.5		5.6	9.0 9.0	

Remarks: \* DA: Depth-Averaged  
 \*\* Calm: Small or no wave; Moderate: Between calm and rough; Rough : White capped or rougher



**Water Quality Monitoring Results at I2 - Mid-Ebb Tide**

Date	Weather Condition	Sea Condition**	Sampling Time	Depth (m)		Water Temperature (°C)		pH		Salinity ppt		DO Saturation (%)		Dissolved Oxygen (mg/L)			Turbidity(NTU)			Suspended Solids (mg/L)				
						Value	Average	Value	Average	Value	Average	Value	Average	Value	Average	DA*	Value	Average	DA*	Value	Average	DA*		
1-Sep-08	Sunny	Calm	13:58	Surface	1	27.0 27.0	27.0	7.5 8.1	7.8	28.6 28.6	28.6	97.9 97.6	97.8	6.7 6.6	6.7	6.7	3.0 3.1	3.1	3.0	8.0 8.0	8.0	7.2		
				Middle	4.5	26.7 26.7	26.7	8.1 7.4	7.8	28.8 28.8	28.8	96.3 96.1	96.2	6.6 6.6	6.6		2.8 2.9	2.9		2.8 2.9	2.9		7.0 8.0	7.5
				Bottom	8	26.5 26.4	26.5	7.5 8.2	7.9	29.2 29.3	29.3	95.5 95.5	95.5	6.5 6.5	6.5		2.9 3.0	3.0		2.9 3.0	3.0		6.0 6.0	6.0
3-Sep-08	Sunny	Calm	13:39	Surface	1	28.4 28.2	28.3	7.3 7.9	7.6	26.1 26.2	26.2	117.8 118.9	118.4	8.6 8.7	8.7	8.6	2.7 2.7	2.7	2.8	2.5 3.0	2.8	2.7		
				Middle	4.5	27.7 27.7	27.7	7.9 7.2	7.6	26.9 26.9	26.9	114.0 112.8	113.4	8.4 8.3	8.4		2.7 2.8	2.8		2.7 2.8	2.8		2.5 2.5	2.5
				Bottom	8	27.5 26.5	27.0	7.3 8.0	7.7	27.2 27.2	27.2	106.3 105.8	106.1	7.9 7.9	7.9		2.8 2.8	2.8		2.8 2.8	2.8		2.5 3.0	2.8
5-Sep-08	Rainy	Calm	15:41	Surface	1	27.9 27.8	27.9	8.0 7.6	7.8	27.5 27.6	27.6	119.9 119.8	119.9	8.0 8.0	8.0	7.9	2.5 2.2	2.4	2.5	17.0 17.0	17.0	19.5		
				Middle	4.5	27.4 27.1	27.3	8.1 7.5	7.8	27.8 27.8	27.8	114.3 112.7	113.5	7.9 7.7	7.8		2.2 2.4	2.3		2.2 2.4	2.3		19.0 19.0	19.0
				Bottom	8	26.5 26.5	26.5	8.2 7.6	7.9	28.8 28.8	28.8	96.8 92.5	94.7	6.9 6.3	6.6		2.9 2.9	2.9		2.9 2.9	2.9		23.0 22.0	22.5
8-Sep-08	Sunny	Calm	08:13	Surface	1	28.1 28.1	28.1	8.4 8.0	8.2	27.8 27.8	27.8	130.2 141.9	136.1	9.1 10.0	9.6	9.6	2.6 2.4	2.5	2.7	8.0 8.0	8.0	12.0		
				Middle	5	27.6 27.2	27.4	8.5 7.9	8.2	28.1 28.0	28.1	144.5 122.8	133.7	10.2 9.0	9.6		2.4 2.5	2.5		2.4 2.5	2.5		10.0 10.0	10.0
				Bottom	9	26.6 26.6	26.6	8.5 8.1	8.3	28.9 29.1	29.0	111.0 102.7	106.9	8.2 7.5	7.9		3.0 3.2	3.1		3.0 3.2	3.1		18.0 18.0	18.0
10-Sep-08	Sunny	Calm	08:13	Surface	1	28.0 28.1	28.1	8.5 7.9	8.2	27.8 27.8	27.8	130.2 142.1	136.2	9.1 10.1	9.6	9.6	2.8 2.5	2.7	2.8	5.0 5.0	5.0	8.7		
				Middle	5	27.7 27.3	27.5	8.6 8.0	8.3	27.9 28.1	28.0	144.5 122.9	133.7	10.1 9.0	9.6		2.5 2.7	2.6		2.5 2.7	2.6		10.0 10.0	10.0
				Bottom	9	26.8 26.8	26.8	8.6 7.9	8.3	29.1 29.1	29.1	110.9 102.6	106.8	8.1 7.6	7.9		3.1 3.1	3.1		3.1 3.1	3.1		11.0 11.0	11.0
12-Sep-08	Sunny	Calm	10:45	Surface	1	28.1 28.0	28.1	8.1 7.7	7.9	27.4 27.4	27.4	138.8 138.6	138.7	9.3 9.3	9.3	8.9	2.7 2.3	2.5	2.7	14.0 14.0	14.0	15.0		
				Middle	4.5	27.7 27.5	27.6	8.1 7.4	7.8	28.0 28.1	28.1	130.6 122.2	126.4	8.8 8.2	8.5		2.4 2.5	2.5		2.4 2.5	2.5		15.0 15.0	15.0
				Bottom	8	26.2 26.1	26.2	8.3 7.6	8.0	30.1 30.2	30.2	114.9 109.3	112.1	7.8 7.5	7.7		3.1 3.2	3.2		3.1 3.2	3.2		16.0 16.0	16.0
16-Sep-08	Sunny	Calm	13:08	Surface	1	27.6 27.5	27.6	7.9 7.5	7.7	27.4 27.5	27.5	129.8 141.5	135.7	8.8 9.8	9.3	9.3	2.2 2.0	2.1	2.3	17.0 17.0	17.0	12.3		
				Middle	4.5	27.1 26.9	27.0	8.1 7.6	7.9	27.5 27.6	27.6	144.1 122.4	133.3	9.7 8.6	9.2		2.0 2.2	2.1		2.0 2.2	2.1		9.0 9.0	9.0
				Bottom	8	26.3 26.2	26.3	8.2 7.4	7.8	28.6 28.6	28.6	110.5 102.4	106.5	7.6 7.1	7.4		2.8 2.6	2.7		2.8 2.6	2.7		11.0 11.0	11.0
18-Sep-08	Sunny	Calm	14:26	Surface	1	28.0 27.9	28.0	8.3 7.9	8.1	30.2 30.2	30.2	99.1 96.5	97.8	6.6 6.4	6.5	6.3	2.8 2.3	2.6	2.8	8.0 8.0	8.0	14.0		
				Middle	4.5	27.5 27.5	27.5	8.6 7.9	8.3	30.4 30.4	30.4	89.5 89.8	89.7	6.0 6.0	6.0		2.5 2.7	2.6		2.5 2.7	2.6		15.0 15.0	15.0
				Bottom	8	27.2 27.2	27.2	8.7 8.0	8.4	30.6 30.6	30.6	89.4 90.1	89.8	6.1 6.2	6.2		3.0 3.2	3.1		3.0 3.2	3.1		19.0 19.0	19.0
20-Sep-08	Sunny	Calm	15:49	Surface	1	27.7 27.7	27.7	8.8 7.9	8.4	31.5 31.6	31.6	100.5 99.8	100.2	7.2 7.2	7.2	6.7	3.7 3.7	3.7	4.1	15.0 15.0	15.0	11.7		
				Middle	4.5	26.9 26.9	26.9	8.6 8.3	8.5	30.0 30.0	30.0	84.2 83.3	83.8	6.1 6.1	6.1		3.8 3.8	3.8		3.8 3.8	3.8		12.0 12.0	12.0
				Bottom	8	26.7 26.7	26.7	8.2 8.4	8.3	30.3 30.3	30.3	83.6 83.6	83.6	6.1 6.1	6.1		4.6 5.2	4.9		4.6 5.2	4.9		8.0 8.0	8.0

Remarks: \* DA: Depth-Averaged  
 \*\* Calm: Small or no wave; Moderate: Between calm and rough; Rough : White capped or rougher

### Water Quality Monitoring Results at I2 - Mid-Ebb Tide

Date	Weather Condition	Sea Condition**	Sampling Time	Depth (m)		Water Temperature (°C)		pH		Salinity ppt		DO Saturation (%)		Dissolved Oxygen (mg/L)			Turbidity(NTU)			Suspended Solids (mg/L)		
						Value	Average	Value	Average	Value	Average	Value	Average	Value	Average	DA*	Value	Average	DA*	Value	Average	DA*
22-Sep-08	Sunny	Moderate	08:16	Surface	1	28.2 27.9	28.1	8.7 8.4	8.6	27.6 27.9	27.8	130.0 131.9	131.0	9.3 9.0	9.2	9.1	2.7 2.4	2.6	2.8	11.0 11.0	11.0	11.0
				Middle	4.5	27.7 27.4	27.6	8.9 8.1	8.5	28.0 28.1	28.1	134.6 123.0	128.8	9.0 9.0	9.0		2.5 2.6	2.6		13.0 13.0	13.0	
				Bottom	8	26.6 26.6	26.6	8.9 8.2	8.6	28.9 29.1	29.0	110.9 102.7	106.8	8.0 7.5	7.8		7.8	3.2 3.0		3.1	9.0 9.0	
26-Sep-08	Sunny	Calm	10:45	Surface	1	27.3 27.3	27.3	8.9 8.3	8.6	31.3 31.4	31.4	98.3 95.3	96.8	7.5 7.3	7.4	7.3	2.1 2.0	2.1	2.4	15.0 15.0	15.0	11.5
				Middle	4.5	27.3 27.3	27.3	8.8 8.4	8.6	31.4 31.4	31.4	93.2 92.3	92.8	7.2 7.1	7.2		2.2 2.3	2.3		10.0 10.0	10.0	
				Bottom	8	27.0 27.1	27.1	8.2 8.6	8.4	31.5 31.5	31.5	88.1 88.0	88.1	6.9 6.9	6.9		6.9	2.6 2.7		2.7	9.0 10.0	
29-Sep-08	Sunny	Calm	12:33	Surface	1	27.4 27.4	27.4	8.7 8.3	8.5	32.3 32.3	32.3	96.1 94.6	95.4	7.4 7.3	7.4	7.2	4.4 4.3	4.4	6.2	7.0 7.0	7.0	9.3
				Middle	4.5	27.3 27.3	27.3	8.1 8.1	8.1	32.5 32.5	32.5	92.4 88.5	90.5	7.1 6.9	7.0		6.1 6.4	6.3		10.0 10.0	10.0	
				Bottom	8	27.2 27.2	27.2	8.9 8.1	8.5	32.5 32.5	32.5	91.4 91.1	91.3	7.0 7.0	7.0		7.0	7.4 8.2		7.8	11.0 11.0	

Remarks: \* DA: Depth-Averaged

\*\* Calm: Small or no wave; Moderate: Between calm and rough; Rough : White capped or rougher

### Water Quality Monitoring Results at I2 - Mid-Flood Tide

Date	Weather Condition	Sea Condition**	Sampling Time	Depth (m)		Water Temperature (°C)		pH		Salinity ppt		DO Saturation (%)		Dissolved Oxygen (mg/L)			Turbidity(NTU)			Suspended Solids (mg/L)		
						Value	Average	Value	Average	Value	Average	Value	Average	Value	Average	DA*	Value	Average	DA*	Value	Average	DA*
1-Sep-08	Sunny	Calm	09:00	Surface	1	27.1 27.1	27.1	7.7 7.5	7.6	28.5 28.6	28.6	96.5 96.9	96.7	6.5 6.6	6.6	6.6	3.6 3.6	3.6	3.1	9.0 8.0	8.5	9.5
				Middle	4.5	26.7 26.7	26.7	8.1 8.1	8.1	28.8 28.8	28.8	96.0 95.7	95.9	6.5 6.5	6.5		2.8 3.0	2.9		8.0 8.0	8.0	
				Bottom	8	26.5 26.4	26.5	7.3 7.4	7.4	29.3 29.3	29.3	95.4 95.4	95.4	6.5 6.5	6.5		2.8 2.7	2.8		12.0 12.0	12.0	
3-Sep-08	Sunny	Calm	08:34	Surface	1	28.0 28.1	28.1	7.1 7.3	7.2	26.4 26.4	26.4	106.7 110.4	108.6	7.9 8.1	8.0	8.2	2.7 2.8	2.8	2.9	7.0 7.0	7.0	8.2
				Middle	4.5	27.7 27.7	27.7	7.2 7.1	7.2	26.9 26.9	26.9	111.8 111.1	111.5	8.3 8.2	8.3		3.1 3.0	3.1		11.0 10.0	10.5	
				Bottom	8	27.6 27.6	27.6	7.2 7.3	7.3	27.0 27.1	27.1	109.9 109.5	109.7	8.1 8.1	8.1		2.9 2.8	2.9		7.0 7.0	7.0	
5-Sep-08	Rainy	Calm	10:06	Surface	1	27.8 27.9	27.9	7.5 7.5	7.5	27.5 27.5	27.5	103.9 126.0	115.0	7.3 8.7	8.0	8.0	2.6 2.3	2.5	2.8	11.0 11.0	11.0	15.0
				Middle	4.5	26.7 26.9	26.8	7.2 7.6	7.4	28.3 28.2	28.3	114.3 109.4	111.9	8.1 7.8	8.0		2.6 2.6	2.6		14.0 14.0	14.0	
				Bottom	8	26.4 26.2	26.3	7.3 7.4	7.4	29.2 29.2	29.2	86.7 88.7	87.7	6.1 6.2	6.2		3.1 3.3	3.2		20.0 20.0	20.0	
8-Sep-08	Sunny	Calm	16:56	Surface	1	28.0 28.2	28.1	8.0 7.8	7.9	27.6 27.7	27.7	104.2 126.3	115.3	7.6 9.0	8.3	8.2	2.7 2.4	2.6	2.9	3.0 3.0	3.0	12.0
				Middle	5	26.8 27.1	27.0	7.6 8.0	7.8	28.4 28.4	28.4	114.5 109.7	112.1	8.2 7.9	8.1		2.7 2.8	2.8		15.0 15.0	15.0	
				Bottom	9	26.5 26.5	26.5	7.7 7.9	7.8	29.4 29.4	29.4	87.0 78.9	83.0	6.3 5.9	6.1		3.3 3.5	3.4		12.0 12.0	12.0	
10-Sep-08	Sunny	Calm	17:23	Surface	1	28.0 28.2	28.1	7.9 7.8	7.9	27.7 27.6	27.7	104.0 126.1	115.1	7.4 8.9	8.2	8.2	2.9 2.5	2.7	3.0	11.0 12.0	11.5	13.0
				Middle	5	26.9 27.2	27.1	7.7 8.0	7.9	28.4 28.5	28.5	114.5 109.7	112.1	8.2 8.0	8.1		2.9 2.7	2.8		10.0 10.0	10.0	
				Bottom	9	26.5 26.4	26.5	7.7 7.8	7.8	29.3 29.4	29.4	86.9 78.9	82.9	6.2 5.9	6.1		3.2 3.5	3.4		17.0 18.0	17.5	
12-Sep-08	Sunny	Calm	18:26	Surface	1	28.0 28.0	28.0	7.5 7.6	7.6	27.8 27.8	27.8	124.6 124.6	124.6	8.4 8.4	8.4	8.5	2.7 2.5	2.6	3.0	16.0 16.0	16.0	27.0
				Middle	4.5	27.6 27.5	27.6	7.1 7.7	7.4	28.1 28.2	28.2	126.7 125.6	126.2	8.5 8.5	8.5		2.9 2.8	2.9		39.0 39.0	39.0	
				Bottom	8	26.4 26.3	26.4	7.2 7.3	7.3	29.9 29.9	29.9	117.7 111.5	114.6	8.0 7.6	7.8		3.3 3.6	3.5		26.0 26.0	26.0	
16-Sep-08	Sunny	Calm	08:21	Surface	1	27.5 27.8	27.7	7.4 7.3	7.4	27.4 27.2	27.3	103.6 125.8	114.7	7.1 8.5	7.8	7.8	2.2 2.2	2.2	2.5	16.0 16.0	16.0	14.7
				Middle	4.5	26.5 26.6	26.6	7.0 7.6	7.3	28.1 27.9	28.0	114.2 109.1	111.7	8.0 7.5	7.8		2.3 2.3	2.3		15.0 15.0	15.0	
				Bottom	8	26.3 25.9	26.1	7.2 7.4	7.3	28.9 29.1	29.0	90.6 90.8	90.7	6.0 6.1	6.1		2.9 2.9	2.9		13.0 13.0	13.0	
18-Sep-08	Fine	Calm	08:30	Surface	1	28.1 28.0	28.1	7.9 7.8	7.9	30.2 30.2	30.2	94.5 94.5	94.5	6.4 6.4	6.4	6.4	2.7 2.4	2.6	2.9	14.0 14.0	14.0	14.3
				Middle	4.5	27.5 27.5	27.5	7.6 8.0	7.8	30.4 30.4	30.4	91.7 91.3	91.5	6.3 6.3	6.3		2.9 2.7	2.8		16.0 16.0	16.0	
				Bottom	8	27.3 27.3	27.3	7.8 7.7	7.8	30.6 30.5	30.6	88.4 88.0	88.2	6.0 6.0	6.0		3.4 3.4	3.4		13.0 13.0	13.0	
20-Sep-08	Sunny	Calm	09:49	Surface	1	26.7 26.7	26.7	8.8 8.9	8.9	30.8 30.8	30.8	92.8 92.1	92.5	6.5 6.5	6.5	6.4	4.5 4.5	4.5	4.5	12.0 12.0	12.0	13.3
				Middle	4.5	25.9 25.9	25.9	8.4 8.4	8.4	30.7 30.8	30.8	84.2 84.2	84.2	6.2 6.2	6.2		4.4 4.4	4.5		13.0 13.0	13.0	
				Bottom	8	25.7 25.7	25.7	8.9 7.9	8.4	31.1 31.2	31.2	80.6 80.0	80.3	6.1 6.0	6.1		4.4 4.4	4.4		15.0 15.0	15.0	

Remarks: \* DA: Depth-Averaged  
 \*\* Calm: Small or no wave; Moderate: Between calm and rough; Rough : White capped or rougher

### Water Quality Monitoring Results at I2 - Mid-Flood Tide

Date	Weather Condition	Sea Condition**	Sampling Time	Depth (m)		Water Temperature (°C)		pH		Salinity ppt		DO Saturation (%)		Dissolved Oxygen (mg/L)			Turbidity(NTU)			Suspended Solids (mg/L)		
						Value	Average	Value	Average	Value	Average	Value	Average	Value	Average	DA*	Value	Average	DA*	Value	Average	DA*
22-Sep-08	Sunny	Moderate	16:23	Surface	1	28.1 28.0	28.1	8.2 8.1	8.2	27.8 27.7	27.8	104.1 126.2	115.2	7.6 8.8	8.2	8.2	2.9 2.6	2.8	3.0	13.0 13.0	13.0	12.0
				Middle	5	26.9 27.2	27.1	7.9 8.3	8.1	28.4 28.4	28.4	114.6 109.7	112.2	8.2 8.0	8.1		2.8 2.7	2.8		10.0 10.0	10.0	
				Bottom	9	26.5 26.5	26.5	8.1 8.0	8.1	29.4 29.3	29.4	87.0 79.0	83.0	6.3 5.9	6.1		6.1	3.3 3.6		3.5	10.0 10.0	
24-Sep-08	Fine	Moderate	17:14	Surface	1	26.4 26.4	26.4	8.2 8.8	8.5	30.8 30.8	30.8	101.3 101.2	101.3	6.9 6.9	6.9	6.8	2.9 3.0	3.0	3.7	33.0 33.0	33.0	32.2
				Middle	4.5	26.3 26.3	26.3	8.4 8.2	8.3	31.1 31.1	31.1	98.8 98.4	98.6	6.7 6.7	6.7		3.8 3.8	3.8		17.0 18.0	17.5	
				Bottom	8	26.3 26.3	26.3	8.8 7.9	8.4	31.2 31.3	31.3	96.5 96.3	96.4	6.5 6.5	6.5		6.5	4.2 4.2		4.2	46.0 46.0	
26-Sep-08	Fine	Calm	17:50	Surface	1	27.3 27.3	27.3	8.1 8.1	8.1	31.4 31.4	31.4	86.9 86.7	86.8	6.8 6.8	6.8	6.8	2.1 2.1	2.1	2.3	12.0 12.0	12.0	9.8
				Middle	4.5	27.3 27.3	27.3	8.0 8.3	8.2	31.4 31.4	31.4	85.8 85.6	85.7	6.7 6.7	6.7		2.3 2.4	2.4		10.0 10.0	10.0	
				Bottom	8	27.3 27.3	27.3	8.0 8.1	8.1	31.4 31.4	31.4	85.3 85.3	85.3	6.7 6.7	6.7		6.7	2.4 2.4		2.4	7.0 8.0	
29-Sep-08	Fine	Calm	12:33	Surface	1	27.4 27.4	27.4	8.0 8.0	8.0	32.3 32.3	32.3	90.1 89.2	89.7	7.0 6.9	7.0	7.0	5.8 4.8	5.3	6.1	8.0 8.0	8.0	10.8
				Middle	4.5	27.3 27.3	27.3	8.6 7.8	8.2	32.5 32.5	32.5	92.6 88.6	90.6	7.1 6.9	7.0		5.7 5.9	5.8		9.0 10.0	9.5	
				Bottom	8	27.2 27.2	27.2	7.8 7.9	7.9	32.5 32.5	32.5	88.1 87.7	87.9	6.8 6.8	6.8		6.8	6.8 7.7		7.3	15.0 15.0	

Remarks: \* DA: Depth-Averaged  
 \*\* Calm: Small or no wave; Moderate: Between calm and rough; Rough : White capped or rougher

**Water Quality Monitoring Results at Intake A - Mid-Ebb Tide**

Date	Weather Condition	Sea Condition**	Sampling Time	Depth (m)		Water Temperature (°C)		pH		Salinity ppt		DO Saturation (%)		Dissolved Oxygen (mg/L)			Turbidity(NTU)			Suspended Solids (mg/L)		
						Value	Average	Value	Average	Value	Average	Value	Average	Value	Average	DA*	Value	Average	DA*	Value	Average	DA*
1-Sep-08	Sunny	Calm	14:07	Surface	1	26.7 26.7	26.7	7.8 8.1	8.0	28.5 28.5	28.5	94.2 94.2	94.2	6.5 6.5	6.5	6.4	3.0 3.0	3.0	3.3	7.0 7.0	7.0	8.0
				Middle	5	26.7 26.7	26.7	8.0 7.5	7.8	28.6 28.7	28.7	90.3 90.4	90.4	6.2 6.2	6.2		3.2 3.9	3.6		8.0 8.0	8.0	
				Bottom	9	26.5 26.3	26.4	7.8 8.5	8.2	29.2 29.4	29.3	91.6 92.0	91.8	6.3 6.3	6.3		3.5 3.3	3.4		9.0 9.0	9.0	
3-Sep-08	Sunny	Calm	13:32	Surface	1	28.6 26.4	27.5	7.6 7.9	7.8	26.2 26.3	26.3	108.7 115.5	112.1	7.9 8.4	8.2	8.3	1.6 2.0	1.8	2.4	8.0 8.0	8.0	5.7
				Middle	5	27.8 27.8	27.8	7.8 7.3	7.6	26.7 26.7	26.7	113.6 112.6	113.1	8.4 8.3	8.4		2.6 2.6	2.6		4.0 4.0	4.0	
				Bottom	9	27.5 25.5	26.5	7.6 8.3	8.0	27.1 27.1	27.1	107.9 107.9	107.9	8.0 8.0	8.0		2.7 2.7	2.7		5.0 5.0	5.0	
5-Sep-08	Rainy	Calm	15:31	Surface	1	27.9 28.1	28.0	8.3 7.3	7.8	27.7 27.5	27.6	127.3 126.5	126.9	8.5 8.5	8.5	8.2	2.2 2.4	2.3	2.7	24.0 24.0	24.0	21.3
				Middle	5	27.1 26.8	27.0	8.0 8.3	8.2	27.7 28.1	27.9	119.2 115.9	117.6	8.0 7.7	7.9		2.4 2.5	2.5		27.0 27.0	27.0	
				Bottom	9	26.3 26.1	26.2	7.5 7.5	7.5	29.4 29.6	29.5	89.1 89.5	89.3	6.1 6.2	6.2		3.4 3.4	3.4		13.0 13.0	13.0	
8-Sep-08	Sunny	Calm	08:03	Surface	1	28.1 28.4	28.3	8.7 7.7	8.2	27.8 27.6	27.7	152.4 151.7	152.1	10.7 10.6	10.7	10.2	2.4 2.5	2.5	3.0	13.0 13.0	13.0	10.7
				Middle	5.5	27.3 27.0	27.2	8.4 8.8	8.6	27.8 28.2	28.0	144.5 125.2	134.9	10.3 8.9	9.6		2.6 2.7	2.7		9.0 9.0	9.0	
				Bottom	10	26.4 26.2	26.3	8.0 7.9	8.0	29.5 29.8	29.7	84.4 80.1	82.3	6.3 5.9	6.1		3.7 3.6	3.7		10.0 10.0	10.0	
10-Sep-08	Sunny	Calm	08:03	Surface	1	28.0 28.2	28.1	8.8 7.6	8.2	27.8 27.6	27.7	152.4 151.7	152.1	10.6 10.7	10.7	10.1	2.5 2.7	2.6	2.9	9.0 10.0	9.5	9.7
				Middle	5	27.4 27.1	27.3	8.3 8.6	8.5	27.8 28.2	28.0	144.3 125.2	134.8	10.1 8.9	9.5		2.6 2.6	2.6		9.0 11.0	10.0	
				Bottom	9	26.4 26.3	26.4	8.0 7.8	7.9	29.6 29.7	29.7	84.4 80.3	82.4	6.4 5.8	6.1		3.6 3.5	3.6		10.0 9.0	9.5	
12-Sep-08	Sunny	Calm	10:35	Surface	1	27.9 27.9	27.9	8.3 7.2	7.8	27.9 27.9	27.9	137.0 135.8	136.4	9.2 9.1	9.2	7.9	2.3 2.6	2.5	2.9	19.0 19.0	19.0	29.5
				Middle	5	26.3 26.3	26.3	8.0 8.4	8.2	29.8 29.8	29.8	95.3 94.6	95.0	6.5 6.5	6.5		2.5 2.8	2.7		35.0 35.0	35.0	
				Bottom	9	26.1 26.1	26.1	7.4 7.4	7.4	30.0 30.1	30.1	92.9 92.6	92.8	6.4 6.3	6.4		3.5 3.6	3.6		34.0 35.0	34.5	
16-Sep-08	Sunny	Calm	12:56	Surface	1	27.7 28.0	27.9	8.3 7.3	7.8	27.5 27.4	27.5	152.0 151.3	151.7	10.2 10.2	10.2	9.7	2.1 2.1	2.1	2.5	9.0 9.0	9.0	11.0
				Middle	5	27.0 26.7	26.9	7.8 8.2	8.0	27.5 27.8	27.7	144.0 124.8	134.4	9.7 8.6	9.2		2.1 2.3	2.2		9.0 9.0	9.0	
				Bottom	9	26.0 25.8	25.9	7.6 7.4	7.5	29.1 29.5	29.3	90.8 91.2	91.0	6.0 6.1	6.1		3.1 3.1	3.1		15.0 15.0	15.0	
18-Sep-08	Sunny	Calm	14:16	Surface	1	28.3 28.3	28.3	8.7 7.6	8.2	30.4 30.4	30.4	115.4 112.2	113.8	7.6 7.4	7.5	7.3	2.5 2.7	2.6	2.9	16.0 16.0	16.0	14.2
				Middle	5	28.0 28.0	28.0	8.5 8.7	8.6	30.4 30.5	30.5	105.6 104.9	105.3	7.0 6.9	7.0		2.5 2.6	2.6		13.0 14.0	13.5	
				Bottom	9	28.0 28.0	28.0	7.8 7.8	7.8	30.4 30.4	30.4	103.8 102.3	103.1	6.9 6.8	6.9		3.5 3.7	3.6		13.0 13.0	13.0	
20-Sep-08	Sunny	Calm	16:05	Surface	1	27.6 27.6	27.6	7.9 8.9	8.4	30.5 30.5	30.5	94.6 94.0	94.3	6.7 6.7	6.7	6.4	3.7 3.7	3.7	4.2	12.0 12.0	12.0	9.2
				Middle	5	27.0 27.0	27.0	8.6 8.3	8.5	30.2 30.2	30.2	83.6 83.6	83.6	6.0 6.0	6.0		3.6 3.6	3.6		8.0 8.0	8.0	
				Bottom	9	26.6 26.6	26.6	8.3 8.2	8.3	30.3 30.3	30.3	81.2 81.3	81.3	6.1 6.1	6.1		4.9 5.8	5.4		7.0 8.0	7.5	

Remarks: \* DA: Depth-Averaged  
 \*\* Calm: Small or no wave; Moderate: Between calm and rough; Rough : White capped or rougher

### Water Quality Monitoring Results at Intake A - Mid-Ebb Tide

Date	Weather Condition	Sea Condition**	Sampling Time	Depth (m)		Water Temperature (°C)		pH		Salinity ppt		DO Saturation (%)		Dissolved Oxygen (mg/L)			Turbidity(NTU)			Suspended Solids (mg/L)		
						Value	Average	Value	Average	Value	Average	Value	Average	Value	Average	DA*	Value	Average	DA*	Value	Average	DA*
22-Sep-08	Sunny	Moderate	08:06	Surface	1	28.1 28.2	28.2	9.0 8.0	8.5	27.8 27.7	27.8	132.5 131.6	132.1	8.8 8.7	8.8	8.5	2.3 2.5	2.4	2.9	10.0 10.0	10.0	10.0
				Middle	5	27.4 27.1	27.3	8.7 8.9	8.8	28.0 28.2	28.1	114.4 114.4	114.4	8.2 8.2	8.2		2.5 2.8	2.7		6.0 6.0	6.0	
				Bottom	9	26.4 26.3	26.4	8.1 8.2	8.2	29.6 29.7	29.7	84.4 81.3	82.9	6.2 5.9	6.1		3.7 3.6	3.7		14.0 14.0	14.0	
26-Sep-08	Sunny	Calm	10:53	Surface	1	27.4 27.4	27.4	8.0 8.3	8.2	31.0 31.0	31.0	92.4 90.9	91.7	7.2 7.1	7.2	7.0	1.8 1.7	1.8	2.3	11.0 11.0	11.0	13.3
				Middle	5	27.0 26.9	27.0	8.6 8.5	8.6	31.4 31.5	31.5	84.6 84.4	84.5	6.7 6.7	6.7		2.2 2.2	2.2		13.0 13.0	13.0	
				Bottom	9	26.8 26.7	26.8	7.8 8.2	8.0	31.6 31.7	31.7	83.7 83.1	83.4	6.6 6.6	6.6		2.6 3.0	2.8		16.0 16.0	16.0	
29-Sep-08	Sunny	Calm	12:23	Surface	1	27.4 27.4	27.4	8.8 8.0	8.4	32.5 32.5	32.5	103.0 101.5	102.3	7.8 7.7	7.8	7.7	5.0 5.0	5.0	7.4	6.0 6.0	6.0	9.0
				Middle	5	27.2 27.2	27.2	8.6 8.9	8.8	32.5 32.5	32.5	97.9 97.8	97.9	7.5 7.5	7.5		7.9 8.3	8.1		8.0 8.0	8.0	
				Bottom	9	27.2 27.2	27.2	8.2 8.1	8.2	32.5 32.5	32.5	95.2 95.0	95.1	7.3 7.3	7.3		9.0 9.1	9.1		13.0 13.0	13.0	

Remarks: \* DA: Depth-Averaged  
 \*\* Calm: Small or no wave; Moderate: Between calm and rough; Rough : White capped or rougher

### Water Quality Monitoring Results at intake A - Mid-Flood Tide

Date	Weather Condition	Sea Condition**	Sampling Time	Depth (m)		Water Temperature (°C)		pH		Salinity ppt		DO Saturation (%)		Dissolved Oxygen (mg/L)			Turbidity(NTU)			Suspended Solids (mg/L)		
						Value	Average	Value	Average	Value	Average	Value	Average	Value	Average	DA*	Value	Average	DA*	Value	Average	DA*
1-Sep-08	Sunny	Calm	09:09	Surface	1	26.7 26.7	26.7	8.3 8.3	8.3	28.6 28.5	28.6	91.6 91.2	91.4	6.3 6.2	6.3	6.3	3.1 3.0	3.1	3.1	6.0 7.0	6.5	7.5
				Middle	5	26.7 26.7	26.7	7.2 7.9	7.6	28.8 28.8	28.8	91.4 91.4	91.4	6.2 6.2	6.2		3.2 3.2	3.2		8.0 8.0	8.0	
				Bottom	9	26.1 26.0	26.1	7.4 7.7	7.6	29.6 29.6	29.6	90.6 91.2	90.9	6.2 6.2	6.2		3.1 3.1	3.1		8.0 8.0	8.0	
3-Sep-08	Sunny	Calm	08:26	Surface	1	28.3 28.4	28.4	7.0 7.4	7.2	26.4 26.4	26.4	105.9 110.9	108.4	7.8 8.1	8.0	8.5	2.5 2.6	2.6	2.7	8.0 8.0	8.0	5.7
				Middle	5	27.8 27.7	27.8	8.1 7.9	8.0	26.8 26.8	26.8	121.1 121.2	121.2	8.9 8.9	8.9		2.7 2.7	2.7		5.0 5.0	5.0	
				Bottom	9	28.5 27.5	27.0	7.3 7.4	7.4	27.1 27.1	27.1	108.0 106.4	107.2	8.0 7.9	8.0		2.8 2.7	2.8		4.0 4.0	4.0	
5-Sep-08	Rainy	Calm	09:57	Surface	1	27.3 27.2	27.3	7.5 7.6	7.6	27.6 27.6	27.6	120.0 122.2	121.1	8.5 8.6	8.6	8.1	2.3 2.5	2.4	2.8	20.0 21.0	20.5	16.8
				Middle	5	26.6 26.5	26.6	7.7 7.6	7.7	28.7 28.8	28.8	105.6 109.1	107.4	7.4 7.8	7.6		2.7 2.8	2.8		15.0 15.0	15.0	
				Bottom	9	26.3 26.0	26.2	8.0 8.1	8.1	29.4 29.7	29.6	85.2 89.0	87.1	6.2 6.7	6.5		3.2 3.4	3.3		15.0 15.0	15.0	
8-Sep-08	Sunny	Calm	16:48	Surface	1	27.6 27.3	27.5	7.9 7.9	7.9	27.7 27.8	27.8	120.1 122.5	121.3	8.8 8.8	8.8	8.6	2.4 2.6	2.5	3.0	9.0 10.0	9.5	10.7
				Middle	5.5	26.9 26.8	26.9	8.1 7.9	8.0	29.0 29.1	29.1	118.7 109.4	114.1	8.6 7.9	8.3		2.8 3.0	2.9		11.0 11.0	11.0	
				Bottom	10	26.5 26.3	26.4	8.4 8.4	8.4	29.6 30.0	29.8	85.4 80.2	82.8	6.4 5.8	6.1		3.3 3.6	3.5		11.0 11.0	11.0	
10-Sep-08	Sunny	Calm	17:15	Surface	1	27.5 27.4	27.5	7.8 7.9	7.9	27.8 27.7	27.8	120.2 122.4	121.3	8.8 8.9	8.9	8.6	2.6 2.7	2.7	3.1	12.0 12.0	12.0	13.3
				Middle	5.5	26.7 26.7	26.7	8.2 8.0	8.1	29.0 29.1	29.1	118.9 109.3	114.1	8.5 8.1	8.3		3.0 2.9	3.0		12.0 10.0	11.0	
				Bottom	10	26.6 26.2	26.4	8.5 8.4	8.5	29.7 30.0	29.9	85.5 80.1	82.8	6.4 5.8	6.1		3.3 3.6	3.5		16.0 18.0	17.0	
12-Sep-08	Sunny	Calm	18:17	Surface	1	27.3 27.2	27.3	7.4 7.5	7.5	27.6 27.6	27.6	120.0 122.2	121.1	8.5 8.6	8.6	8.4	2.6 2.6	2.6	3.0	21.0 20.0	20.5	26.7
				Middle	5	26.6 26.5	26.6	7.7 7.6	7.7	28.7 28.8	28.8	118.6 109.1	113.9	8.4 7.8	8.1		3.0 3.0	3.0		29.0 28.0	28.5	
				Bottom	9	26.3 26.0	26.2	7.9 8.1	8.0	29.4 29.7	29.6	85.2 80.0	82.6	6.2 5.7	6.0		3.3 3.7	3.5		31.0 31.0	31.0	
16-Sep-08	Sunny	Calm	08:15	Surface	1	27.1 27.0	27.1	7.4 7.5	7.5	27.4 27.4	27.4	119.9 121.9	120.9	8.3 8.3	8.3	8.1	2.0 2.0	2.0	2.5	8.0 8.0	8.0	6.3
				Middle	5	26.5 26.4	26.5	7.5 7.7	7.6	28.4 28.7	28.6	118.5 109.0	113.8	8.1 7.6	7.9		2.4 2.4	2.4		3.0 3.0	3.0	
				Bottom	9	26.1 25.9	26.0	7.9 8.2	8.1	29.3 29.5	29.4	84.9 85.3	85.1	6.1 6.2	6.2		3.1 3.1	3.1		8.0 8.0	8.0	
18-Sep-08	Fine	Calm	08:22	Surface	1	28.4 28.4	28.4	7.8 8.0	7.9	30.4 30.4	30.4	108.6 108.1	108.4	7.1 7.1	7.1	7.0	2.6 2.7	2.7	3.1	13.0 13.0	13.0	14.3
				Middle	5	28.1 28.1	28.1	8.0 8.1	8.1	30.5 30.5	30.5	103.4 101.6	102.5	6.8 6.7	6.8		2.8 2.9	2.9		23.0 23.0	23.0	
				Bottom	9	27.9 27.9	27.9	8.3 8.6	8.5	30.4 30.4	30.4	99.6 97.9	98.8	6.6 6.5	6.6		3.7 3.7	3.7		7.0 7.0	7.0	
20-Sep-08	Sunny	Calm	10:05	Surface	1	26.6 26.7	26.7	8.5 8.6	8.6	30.6 30.8	30.7	99.0 98.3	98.7	7.2 7.1	7.2	6.7	4.4 4.3	4.4	4.6	9.0 9.0	9.0	12.0
				Middle	5	26.1 26.1	26.1	8.3 8.0	8.2	30.2 30.2	30.2	85.5 85.4	85.5	6.2 6.2	6.2		4.6 4.7	4.7		12.0 12.0	12.0	
				Bottom	9	25.6 25.6	25.6	7.9 8.5	8.2	30.4 30.4	30.4	80.9 81.1	81.0	6.0 6.1	6.1		4.6 4.5	4.6		15.0 15.0	15.0	

Remarks: \* DA: Depth-Averaged  
 \*\* Calm: Small or no wave; Moderate: Between calm and rough; Rough : White capped or rougher

**Water Quality Monitoring Results at intake A - Mid-Flood Tide**

Date	Weather Condition	Sea Condition**	Sampling Time	Depth (m)		Water Temperature (°C)		pH		Salinity ppt		DO Saturation (%)		Dissolved Oxygen (mg/L)			Turbidity(NTU)			Suspended Solids (mg/L)		
						Value	Average	Value	Average	Value	Average	Value	Average	Value	Average	DA*	Value	Average	DA*	Value	Average	DA*
22-Sep-08	Sunny	Moderate	16:15	Surface	1	27.6 27.4	27.5	8.3 8.3	8.3	27.9 27.7	27.8	120.1 122.4	121.3	8.6 8.9	8.8	8.5	2.6 2.7	2.7	3.1	3.0 4.0	3.5	11.2
				Middle	5.5	26.8 26.6	26.7	8.5 8.2	8.4	28.8 28.9	28.9	118.9 109.3	114.1	8.5 7.9	8.2		3.0 3.1	3.1		12.0 12.0	12.0	
				Bottom	10	26.5 26.1	26.3	8.7 8.7	8.7	29.5 29.8	29.7	85.4 80.3	82.9	6.3 6.0	6.2		6.2	3.5 3.5		3.5	18.0 18.0	
24-Sep-08	Fine	Moderate	17:05	Surface	1	26.4 26.4	26.4	9.1 8.3	8.7	31.0 31.0	31.0	108.2 105.8	107.0	7.3 7.2	7.3	7.1	3.2 3.5	3.4	4.0	41.0 41.0	41.0	26.8
				Middle	5	26.3 26.3	26.3	8.2 8.7	8.5	31.3 31.3	31.3	102.2 101.0	101.6	6.9 6.8	6.9		4.0 4.2	4.1		26.0 25.0	25.5	
				Bottom	9	26.3 26.3	26.3	8.3 8.8	8.6	31.3 31.3	31.3	99.7 99.6	99.7	6.8 6.7	6.8		6.8	4.6 4.6		4.6	14.0 14.0	
26-Sep-08	Fine	Calm	17:56	Surface	1	27.3 27.4	27.4	7.9 8.2	8.1	31.1 31.1	31.1	82.7 83.4	83.1	6.5 6.6	6.6	6.6	2.1 1.7	1.9	2.4	9.0 9.0	9.0	8.5
				Middle	5	27.0 27.1	27.1	8.8 8.0	8.4	31.4 31.4	31.4	82.4 81.8	82.1	6.5 6.5	6.5		1.9 1.9	1.9		7.0 7.0	7.0	
				Bottom	9	26.7 26.7	26.7	8.2 8.8	8.5	31.6 31.7	31.7	80.9 80.5	80.7	6.4 6.4	6.4		6.4	3.2 3.4		3.3	9.0 10.0	
29-Sep-08	Fine	Calm	18:09	Surface	1	27.4 27.4	27.4	8.1 8.2	8.2	32.4 32.4	32.4	93.9 93.7	93.8	7.2 7.2	7.2	7.2	6.5 6.4	6.5	8.4	7.0 7.0	7.0	6.0
				Middle	5	27.2 27.2	27.2	8.2 8.3	8.3	32.5 32.5	32.5	92.3 92.0	92.2	7.1 7.1	7.1		8.5 9.0	8.8		5.0 5.0	5.0	
				Bottom	9	27.2 27.2	27.2	8.5 8.6	8.6	32.5 32.5	32.5	91.7 91.3	91.5	7.1 7.0	7.1		7.1	9.6 10.2		9.9	6.0 6.0	

Remarks: \* DA: Depth-Averaged  
 \*\* Calm: Small or no wave; Moderate: Between calm and rough; Rough : White capped or rougher



**Water Quality Monitoring Results at Intake B - Mid-Ebb Tide**

Date	Weather Condition	Sea Condition**	Sampling Time	Depth (m)		Water Temperature (°C)		pH		Salinity ppt		DO Saturation (%)		Dissolved Oxygen (mg/L)			Turbidity(NTU)			Suspended Solids (mg/L)		
						Value	Average	Value	Average	Value	Average	Value	Average	Value	Average	DA*	Value	Average	DA*	Value	Average	DA*
1-Sep-08	Sunny	Calm	13:40	Surface	1	27.0 27.0	27.0	7.3 7.5	7.4	29.0 29.0	29.0	102.8 102.7	102.8	7.0 7.0	7.0	7.0	2.9 2.9	2.9	3.1	6.0 6.0	6.0	8.2
				Middle	6	26.7 26.7	26.7	7.6 7.5	7.6	29.4 29.4	29.4	101.6 101.5	101.6	6.9 6.9	6.9		3.3 3.2	3.3		7.0 8.0	7.5	
				Bottom	11	26.6 26.5	26.6	7.5 8.4	8.0	29.4 29.4	29.4	98.1 98.1	98.1	6.7 6.7	6.7		3.0 3.0	3.0		11.0 11.0	11.0	
3-Sep-08	Sunny	Calm	13:52	Surface	1	28.3 28.3	28.3	7.1 7.3	7.2	26.7 26.6	26.7	121.5 120.9	121.2	8.8 8.8	8.8	8.4	2.5 2.9	2.7	3.3	8.0 8.0	8.0	5.7
				Middle	6	27.5 27.5	27.5	7.4 7.3	7.4	27.6 27.5	27.6	107.2 105.6	106.4	7.9 7.8	7.9		3.4 3.9	3.7		6.0 6.0	6.0	
				Bottom	11	27.4 27.3	27.4	7.3 8.2	7.8	27.8 28.0	27.9	106.0 106.3	106.2	7.9 7.9	7.9		3.6 3.5	3.6		3.0 3.0	3.0	
5-Sep-08	Rainy	Calm	15:54	Surface	1	27.1 27.1	27.1	7.0 7.5	7.3	28.4 28.2	28.3	95.9 92.3	94.1	6.6 6.3	6.5	6.4	2.9 3.1	3.0	3.8	14.0 14.0	14.0	17.8
				Middle	6	26.8 26.7	26.8	8.0 7.2	7.6	28.7 28.7	28.7	91.9 90.4	91.2	6.1 6.2	6.2		3.6 4.0	3.8		16.0 15.0	15.5	
				Bottom	11	26.6 26.5	26.6	7.8 8.0	7.9	29.0 29.2	29.1	97.0 93.8	95.4	6.9 6.6	6.8		4.5 4.8	4.7		24.0 24.0	24.0	
8-Sep-08	Sunny	Calm	08:26	Surface	1	27.2 27.3	27.3	7.3 7.9	7.6	28.6 28.5	28.6	121.1 117.5	119.3	8.8 8.5	8.7	8.6	3.0 3.4	3.2	4.0	11.0 11.0	11.0	11.2
				Middle	6	27.0 26.9	27.0	8.3 7.6	8.0	28.8 28.9	28.9	117.1 115.5	116.3	8.3 8.5	8.4		3.8 4.3	4.1		11.0 11.0	11.0	
				Bottom	11	26.8 26.8	26.8	8.2 8.3	8.3	29.1 29.5	29.3	97.1 94.1	95.6	7.1 6.8	7.0		4.6 4.9	4.8		12.0 11.0	11.5	
10-Sep-08	Sunny	Calm	08:26	Surface	1	27.3 27.2	27.3	7.5 8.0	7.8	28.7 28.3	28.5	121.2 117.4	119.3	8.9 8.6	8.8	8.6	3.2 3.4	3.3	4.1	10.0 10.0	10.0	14.3
				Middle	6.5	26.9 26.8	26.9	8.3 7.6	8.0	28.9 28.8	28.9	117.0 115.6	116.3	8.2 8.3	8.3		3.7 4.2	4.0		12.0 10.0	11.0	
				Bottom	12	26.9 26.7	26.8	8.3 8.4	8.4	29.1 29.5	29.3	97.2 94.1	95.7	7.0 6.9	7.0		4.6 5.1	4.9		21.0 23.0	22.0	
12-Sep-08	Sunny	Calm	10:58	Surface	1	27.6 27.6	27.6	7.1 7.6	7.4	27.9 27.9	27.9	117.1 115.4	116.3	7.9 7.8	7.9	7.1	3.1 3.2	3.2	4.1	36.0 36.0	36.0	33.8
				Middle	6	26.3 26.3	26.3	7.9 7.1	7.5	30.0 30.1	30.1	92.6 92.6	92.6	6.3 6.3	6.3		3.7 4.2	4.0		37.0 37.0	37.0	
				Bottom	11	25.7 25.7	25.7	7.7 8.0	7.9	30.9 30.9	30.9	78.6 78.3	78.5	5.4 5.4	5.4		4.8 5.1	5.0		29.0 28.0	28.5	
16-Sep-08	Sunny	Calm	13:22	Surface	1	27.0 27.0	27.0	7.0 7.4	7.2	28.2 27.9	28.1	120.7 117.2	119.0	8.3 8.2	8.3	8.1	2.6 2.9	2.8	3.7	4.0 4.0	4.0	7.3
				Middle	6	26.5 26.6	26.6	7.9 7.0	7.5	28.4 28.6	28.5	116.6 115.2	115.9	7.9 7.9	7.9		3.5 3.9	3.7		7.0 6.0	6.5	
				Bottom	11	26.4 26.2	26.3	7.6 7.8	7.7	28.7 29.1	28.9	96.7 93.5	95.1	6.6 6.5	6.6		4.3 4.6	4.5		11.0 12.0	11.5	
18-Sep-08	Sunny	Calm	14:39	Surface	1	27.5 27.6	27.6	7.5 7.9	7.7	30.3 30.3	30.3	107.9 101.9	104.9	7.2 6.8	7.0	6.5	3.0 3.4	3.2	4.0	9.0 8.0	8.5	14.2
				Middle	6	26.8 26.8	26.8	8.4 7.6	8.0	30.7 30.6	30.7	88.4 87.2	87.8	6.0 5.9	6.0		3.7 4.3	4.0		14.0 14.0	14.0	
				Bottom	11	26.7 26.6	26.7	8.2 8.5	8.4	30.9 30.9	30.9	88.8 88.2	88.5	6.2 6.1	6.2		4.7 5.0	4.9		20.0 20.0	20.0	
20-Sep-08	Sunny	Calm	15:35	Surface	1	28.1 28.1	28.1	8.0 7.9	8.0	30.4 30.4	30.4	98.7 98.8	98.8	6.9 6.9	6.9	6.7	3.6 3.6	3.6	3.7	10.0 10.0	10.0	11.7
				Middle	6	27.2 27.0	27.1	7.9 8.5	8.2	30.7 30.7	30.7	90.9 91.1	91.0	6.3 6.4	6.4		3.6 3.5	3.6		15.0 15.0	15.0	
				Bottom	11	26.5 26.5	26.5	8.2 7.6	7.9	31.0 31.1	31.1	81.2 81.3	81.3	6.0 6.0	6.0		3.9 4.0	4.0		10.0 10.0	10.0	

Remarks: \* DA: Depth-Averaged  
 \*\* Calm: Small or no wave; Moderate: Between calm and rough; Rough : White capped or rougher

**Water Quality Monitoring Results at Intake B - Mid-Ebb Tide**

Date	Weather Condition	Sea Condition**	Sampling Time	Depth (m)		Water Temperature (°C)		pH		Salinity ppt		DO Saturation (%)		Dissolved Oxygen (mg/L)			Turbidity(NTU)			Suspended Solids (mg/L)		
						Value	Average	Value	Average	Value	Average	Value	Average	Value	Average	DA*	Value	Average	DA*	Value	Average	DA*
22-Sep-08	Sunny	Moderate	08:29	Surface	1	27.2 27.4	27.3	7.8 8.1	8.0	28.5 28.4	28.5	121.1 117.5	119.3	8.7 8.6	8.7	8.6	3.0 3.4	3.2	4.0	9.0 9.0	9.0	7.8
				Middle	6	27.0 26.8	26.9	8.7 7.9	8.3	28.9 29.0	29.0	117.2 115.5	116.4	8.2 8.5	8.4		3.8 4.1	4.0		6.0 7.0	6.5	
				Bottom	11	26.7 26.8	26.8	8.6 8.8	8.7	29.2 29.5	29.4	97.1 94.1	95.6	7.0 6.8	6.9		4.7 4.9	4.8		8.0 8.0	8.0	
26-Sep-08	Sunny	Calm	10:25	Surface	1	27.2 27.2	27.2	8.6 7.8	8.2	31.3 31.3	31.3	99.6 97.6	98.6	7.6 7.5	7.6	7.4	2.8 2.8	2.8	3.6	11.0 11.0	11.0	10.7
				Middle	6	26.8 26.8	26.8	8.5 8.7	8.6	31.4 31.4	31.4	93.0 92.4	92.7	7.2 7.2	7.2		3.6 4.1	3.9		8.0 8.0	8.0	
				Bottom	11	26.7 26.8	26.8	8.4 7.6	8.0	31.5 31.5	31.5	91.1 90.9	91.0	7.1 7.1	7.1		4.1 4.3	4.2		13.0 13.0	13.0	
29-Sep-08	Sunny	Calm	12:56	Surface	1	27.4 27.3	27.4	7.5 8.1	7.8	32.1 32.1	32.1	88.4 86.3	87.4	6.9 6.7	6.8	6.6	7.1 7.4	7.3	8.3	10.0 10.0	10.0	10.0
				Middle	6	27.2 27.2	27.2	8.6 7.8	8.2	32.3 32.3	32.3	80.1 80.3	80.2	6.3 6.3	6.3		8.5 8.5	8.5		8.0 8.0	8.0	
				Bottom	11	27.2 27.2	27.2	8.3 8.5	8.4	32.3 32.3	32.3	80.7 80.5	80.6	6.4 6.3	6.4		9.2 9.1	9.2		12.0 12.0	12.0	

Remarks: \* DA: Depth-Averaged  
 \*\* Calm: Small or no wave; Moderate: Between calm and rough; Rough : White capped or rougher

**Water Quality Monitoring Results at Intake B - Mid-Flood Tide**

Date	Weather Condition	Sea Condition**	Sampling Time	Depth (m)		Water Temperature (°C)		pH		Salinity ppt		DO Saturation (%)		Dissolved Oxygen (mg/L)			Turbidity(NTU)			Suspended Solids (mg/L)		
						Value	Average	Value	Average	Value	Average	Value	Average	Value	Average	DA*	Value	Average	DA*	Value	Average	DA*
1-Sep-08	Sunny	Calm	08:42	Surface	1	26.9 27.0	27.0	8.3 7.9	8.1	29.1 29.0	29.1	97.7 99.6	98.7	6.6 6.8	6.7	6.8	2.9 2.8	2.9	3.0	7.0 7.0	7.0	7.0
				Middle	6	26.7 26.7	26.7	7.4 7.5	7.5	29.3 29.3	29.3	100.6 100.6	100.6	6.8 6.8	6.8		3.0 2.9	3.0		7.0 7.0	7.0	
				Bottom	11	26.5 26.6	26.6	7.3 7.3	7.3	29.3 29.3	29.3	99.3 98.8	99.1	6.8 6.7	6.8		3.0 3.0	3.0		7.0 7.0	7.0	
3-Sep-08	Sunny	Calm	08:46	Surface	1	27.2 27.2	27.2	7.1 7.2	7.2	26.8 26.8	26.8	106.9 110.6	108.8	7.9 8.1	8.0	8.1	3.0 3.0	3.0	3.2	6.0 6.0	6.0	8.2
				Middle	6	27.5 27.5	27.5	7.0 8.2	7.6	27.5 27.6	27.6	110.3 109.0	109.7	8.1 8.1	8.1		3.3 3.3	3.3		10.0 9.0	9.5	
				Bottom	11	27.1 27.1	27.1	8.1 8.3	8.2	28.4 28.5	28.5	103.1 100.2	101.7	7.7 7.5	7.6		3.3 3.2	3.3		9.0 9.0	9.0	
5-Sep-08	Rainy	Calm	10:18	Surface	1	27.5 27.4	27.5	8.5 8.3	8.4	28.1 28.1	28.1	115.1 121.6	118.4	7.9 8.4	8.2	8.1	3.6 3.1	3.4	3.9	16.0 16.0	16.0	19.2
				Middle	6	26.8 26.5	26.7	7.9 7.4	7.7	28.9 28.8	28.9	113.7 108.4	111.1	7.9 7.8	7.9		3.7 3.9	3.8		19.0 20.0	19.5	
				Bottom	11	26.3 26.3	26.3	7.5 7.3	7.4	29.3 29.4	29.4	88.9 88.9	88.9	6.2 6.3	6.3		4.3 4.6	4.5		22.0 22.0	22.0	
8-Sep-08	Sunny	Calm	17:09	Surface	1	27.7 27.5	27.6	8.8 8.7	8.8	28.4 28.4	28.4	115.4 121.9	118.7	8.0 8.5	8.3	8.2	2.8 2.9	2.9	3.7	5.0 5.0	5.0	11.2
				Middle	6	27.1 26.8	27.0	8.3 7.8	8.1	29.2 29.0	29.1	113.9 108.6	111.3	8.1 8.1	8.1		3.6 3.7	3.7		16.0 16.0	16.0	
				Bottom	11	26.5 26.5	26.5	7.9 7.8	7.9	29.5 29.5	29.5	84.0 82.1	83.1	6.3 6.0	6.2		4.4 4.4	4.4		11.0 11.0	11.0	
10-Sep-08	Sunny	Calm	17:36	Surface	1	27.6 27.6	27.6	8.9 8.6	8.8	28.2 28.4	28.3	115.4 121.9	118.7	8.1 8.6	8.4	8.2	3.8 3.4	3.6	4.1	10.0 10.0	10.0	13.7
				Middle	6	26.9 26.8	26.9	8.4 7.7	8.1	29.1 29.0	29.1	113.8 108.7	111.3	8.0 7.9	8.0		3.9 4.2	4.1		12.0 13.0	12.5	
				Bottom	11	26.5 26.4	26.5	7.9 7.7	7.8	29.6 29.6	29.6	84.2 82.1	83.2	6.1 6.2	6.2		4.5 4.8	4.7		18.0 19.0	18.5	
12-Sep-08	Sunny	Calm	18:39	Surface	1	27.8 27.8	27.8	8.5 8.3	8.4	28.2 28.2	28.2	106.2 106.1	106.2	7.1 7.1	7.1	7.0	3.9 3.4	3.7	4.1	25.0 25.0	25.0	24.7
				Middle	6	26.5 26.2	26.4	7.9 7.3	7.6	29.9 30.2	30.1	103.5 99.2	101.4	7.0 6.8	6.9		3.8 4.0	3.9		20.0 20.0	20.0	
				Bottom	11	26.1 25.7	25.9	7.6 7.3	7.5	30.5 30.9	30.7	88.1 86.4	87.3	6.0 5.9	6.0		4.6 4.9	4.8		29.0 29.0	29.0	
16-Sep-08	Sunny	Calm	08:36	Surface	1	27.4 27.2	27.3	8.5 8.2	8.4	27.9 27.9	27.9	114.9 121.4	118.2	7.8 8.2	8.0	7.8	2.0 2.1	2.1	2.5	12.0 13.0	12.5	14.8
				Middle	6	26.6 26.3	26.5	7.8 7.4	7.6	28.6 28.6	28.6	113.4 108.2	110.8	7.7 7.5	7.6		2.3 2.4	2.4		18.0 18.0	18.0	
				Bottom	11	26.2 26.2	26.2	7.5 7.1	7.3	29.1 29.2	29.2	92.8 93.7	93.3	6.2 6.3	6.3		3.0 3.0	3.0		14.0 14.0	14.0	
18-Sep-08	Fine	Calm	08:43	Surface	1	27.2 27.2	27.2	8.6 8.6	8.6	30.4 30.4	30.4	96.8 96.5	96.7	6.8 6.8	6.8	6.8	2.0 2.1	2.1	3.1	6.0 6.0	6.0	7.5
				Middle	6	26.9 27.0	27.0	8.2 7.9	8.1	30.5 30.5	30.5	93.9 92.7	93.3	6.7 6.6	6.7		2.8 2.8	2.8		6.0 7.0	6.5	
				Bottom	11	26.9 26.9	26.9	8.0 7.8	7.9	30.7 30.7	30.7	91.0 90.5	90.8	6.5 6.4	6.5		4.4 4.4	4.4		10.0 10.0	10.0	
20-Sep-08	Sunny	Calm	09:35	Surface	1	27.1 27.1	27.1	8.1 8.1	8.1	30.7 31.1	30.9	98.8 99.0	98.9	6.9 6.9	6.9	6.4	3.5 4.1	3.8	4.1	10.0 10.0	10.0	8.5
				Middle	6	25.9 25.9	25.9	9.1 8.6	8.9	30.4 30.6	30.5	84.0 84.0	84.0	5.9 5.9	5.9		3.7 4.0	3.9		5.0 6.0	5.5	
				Bottom	11	25.6 25.7	25.7	8.3 8.8	8.6	30.6 30.6	30.6	81.2 81.6	81.4	6.0 6.1	6.1		4.7 4.6	4.7		10.0 10.0	10.0	

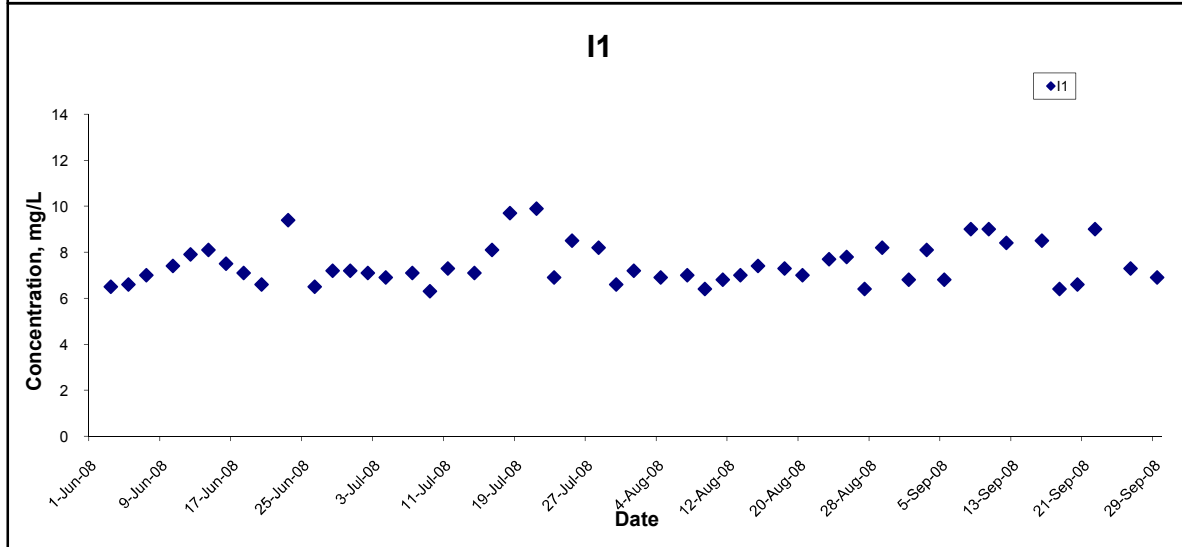
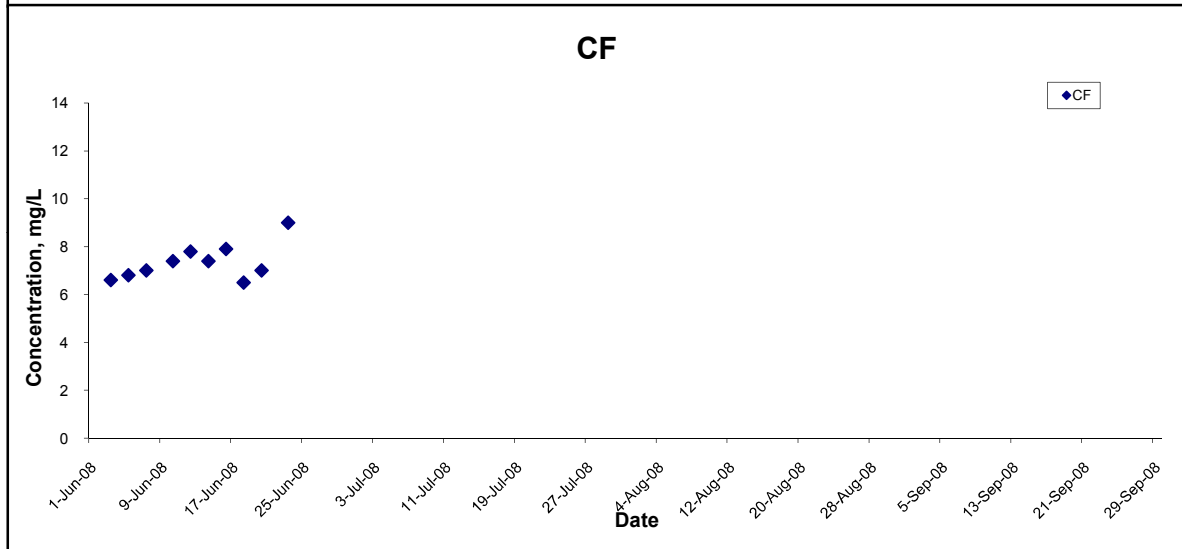
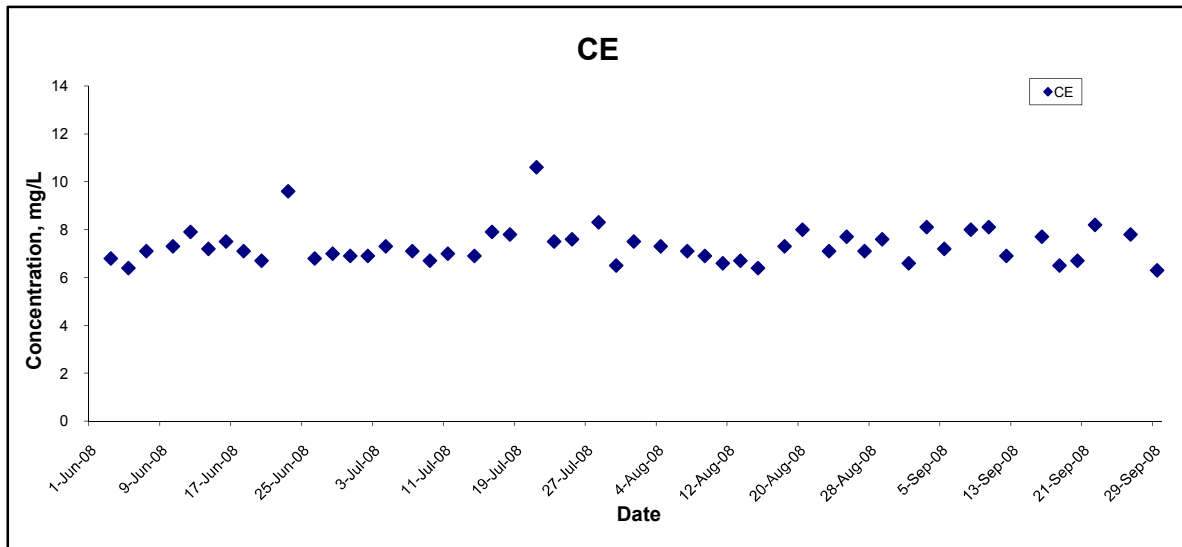
Remarks: \* DA: Depth-Averaged  
 \*\* Calm: Small or no wave; Moderate: Between calm and rough; Rough : White capped or rougher

**Water Quality Monitoring Results at Intake B - Mid-Flood Tide**

Date	Weather Condition	Sea Condition**	Sampling Time	Depth (m)		Water Temperature (°C)		pH		Salinity ppt		DO Saturation (%)		Dissolved Oxygen (mg/L)			Turbidity(NTU)			Suspended Solids (mg/L)		
						Value	Average	Value	Average	Value	Average	Value	Average	Value	Average	DA*	Value	Average	DA*	Value	Average	DA*
22-Sep-08	Sunny	Moderate	16:36	Surface	1	27.6 27.5	27.6	9.2 8.9	9.1	28.4 28.2	28.3	115.4 121.8	118.6	8.0 8.7	8.4	8.2	3.9 3.4	3.7	4.1	15.0 15.0	15.0	11.0
				Middle	6	27.1 26.7	26.9	8.7 8.1	8.4	29.0 29.0	29.0	113.9 108.6	111.3	8.1 7.9	8.0		4.0 4.0	4.0		6.0 6.0	6.0	
				Bottom	11	26.5 26.5	26.5	8.1 8.0	8.1	29.4 29.7	29.6	84.0 82.1	83.1	6.1 6.2	6.2		4.4 4.9	4.7		12.0 12.0	12.0	
24-Sep-08	Fine	Moderate	17:32	Surface	1	26.5 26.5	26.5	7.9 8.5	8.2	30.6 30.6	30.6	105.0 101.2	103.1	7.1 6.9	7.0	6.6	3.1 3.6	3.4	3.8	23.0 24.0	23.5	30.7
				Middle	5.5	26.4 26.4	26.4	8.6 8.5	8.6	31.1 31.1	31.1	90.7 90.5	90.6	6.1 6.1	6.1		4.0 3.9	4.0		28.0 28.0	28.0	
				Bottom	10	26.4 26.4	26.4	7.7 9.1	8.4	31.2 31.2	31.2	89.0 88.8	88.9	6.0 6.0	6.0		3.9 3.8	3.9		41.0 40.0	40.5	
26-Sep-08	Fine	Calm	17:29	Surface	1	27.2 27.2	27.2	9.1 8.9	9.0	31.3 31.3	31.3	91.2 91.0	91.1	7.1 7.1	7.1	7.1	2.8 2.7	2.8	3.6	10.0 10.0	10.0	11.8
				Middle	6	26.9 26.8	26.9	8.5 8.2	8.4	31.4 31.4	31.4	89.4 88.7	89.1	7.0 6.9	7.0		3.4 3.8	3.6		13.0 13.0	13.0	
				Bottom	11	26.8 26.8	26.8	8.1 8.1	8.1	31.5 31.5	31.5	87.5 87.3	87.4	6.9 6.9	6.9		4.4 4.5	4.5		12.0 13.0	12.5	
29-Sep-08	Fine	Calm	18:42	Surface	1	27.4 27.5	27.5	9.2 8.9	9.1	32.0 32.0	32.0	81.0 81.7	81.4	6.4 6.5	6.5	6.4	7.1 6.4	6.8	7.8	4.0 4.0	4.0	5.5
				Middle	6	27.2 27.2	27.2	8.4 7.9	8.2	32.3 32.3	32.3	78.6 78.5	78.6	6.3 6.2	6.3		7.3 8.5	7.9		4.0 5.0	4.5	
				Bottom	11	27.2 27.2	27.2	8.2 7.9	8.1	32.3 32.3	32.3	77.2 77.2	77.2	6.1 6.1	6.1		8.7 8.5	8.6		8.0 8.0	8.0	

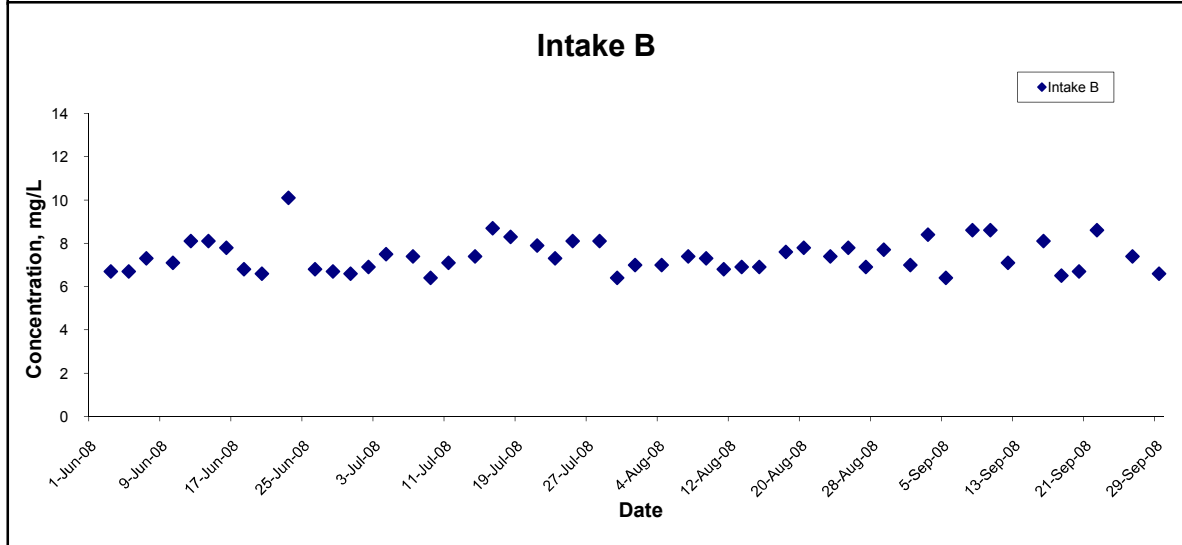
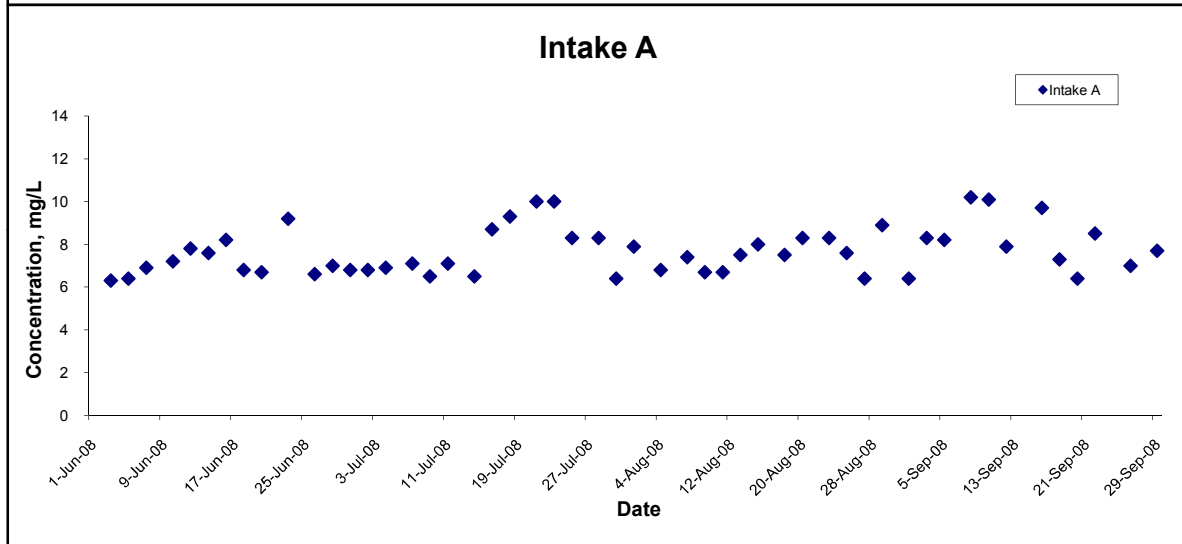
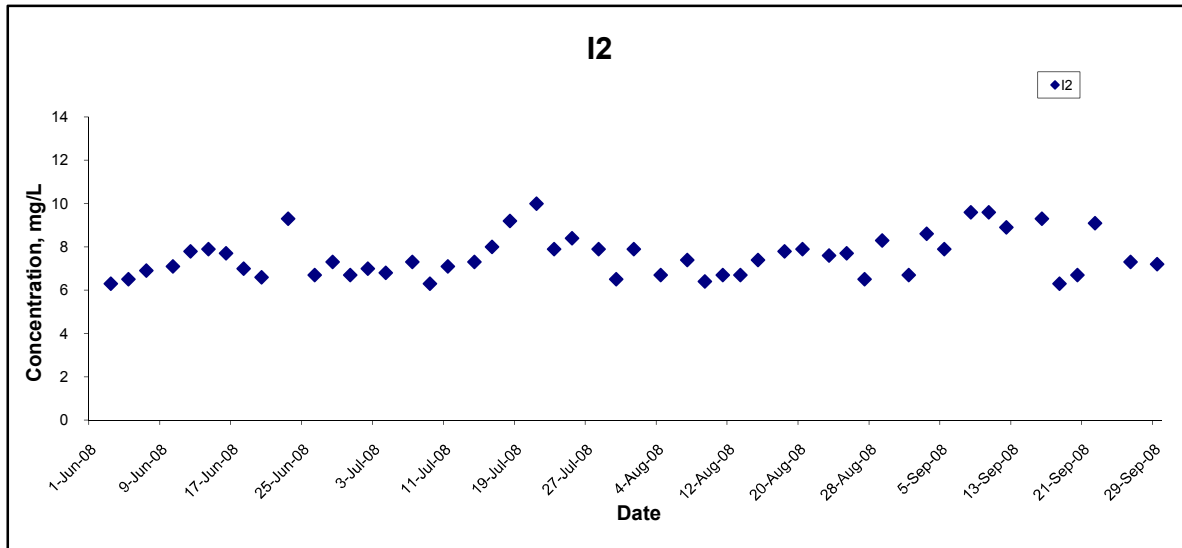
Remarks: \* DA: Depth-Averaged  
 \*\* Calm: Small or no wave; Moderate: Between calm and rough; Rough : White capped or rougher

## Dissolved Oxygen (Surface & Middle) at Mid-Ebb Tide



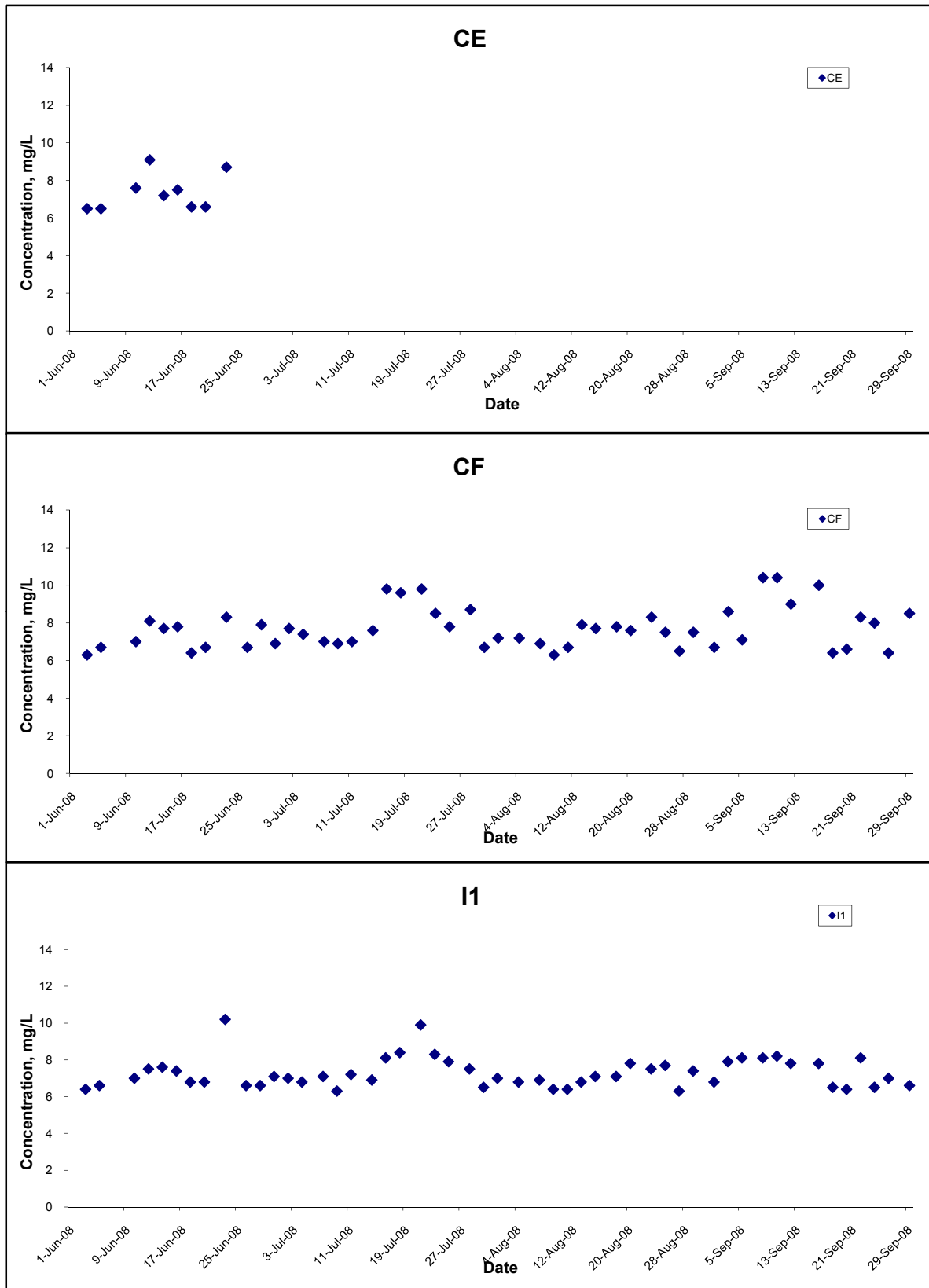
Title Contract No. DC/2007/10 Design and Construction of Hong Kong West Drainage Tunnel  Graphical Presentation of Water Quality Monitoring Results	Scale N.T.S	Project No. MA8001	CINOTECH
	Date Sep 08	Appendix H	

## Dissolved Oxygen (Surface & Middle) at Mid-Ebb Tide



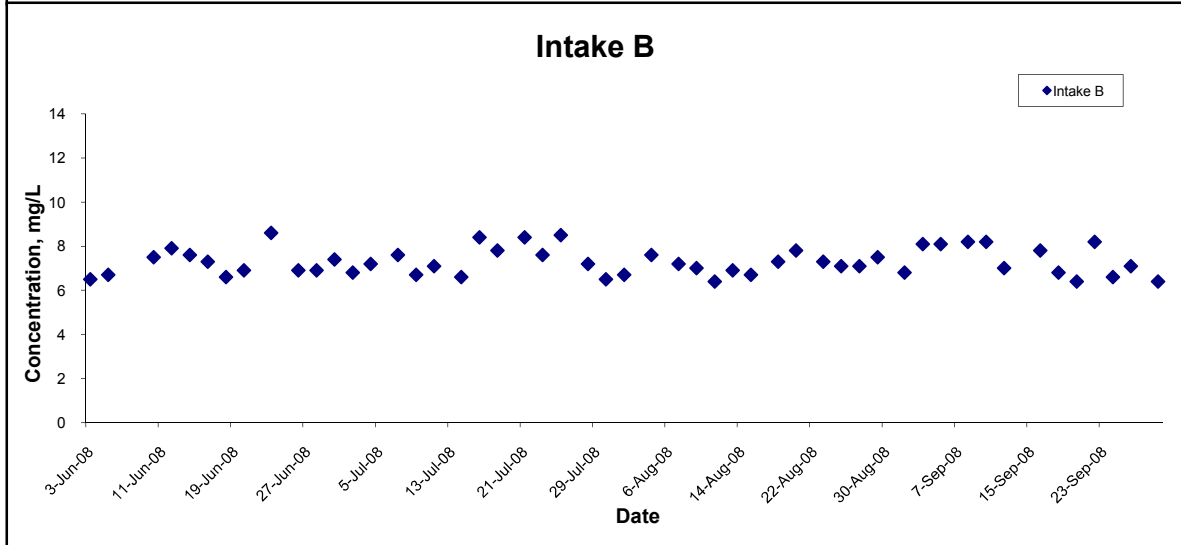
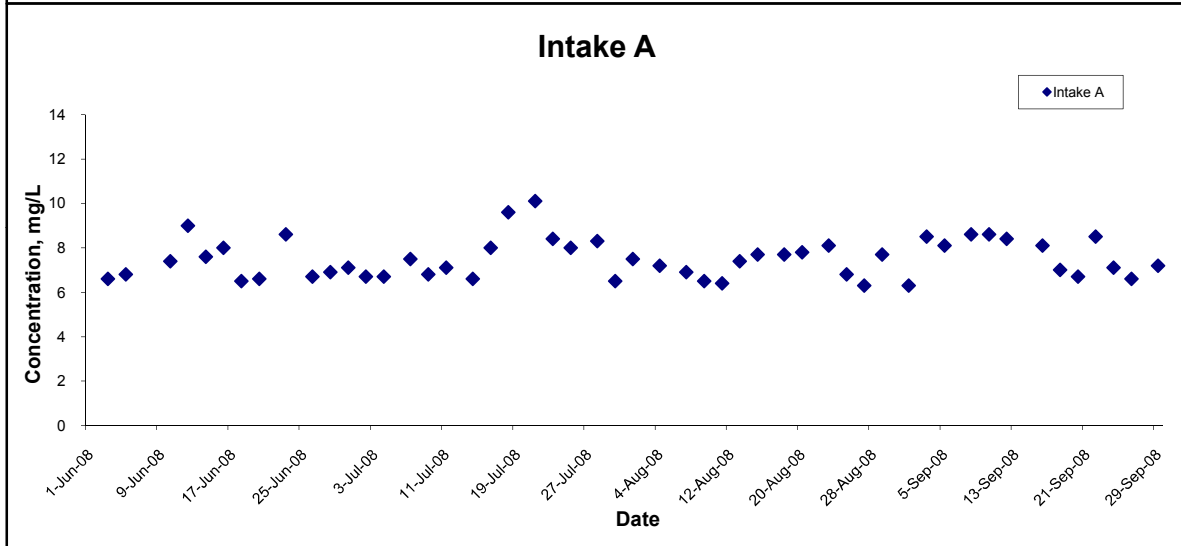
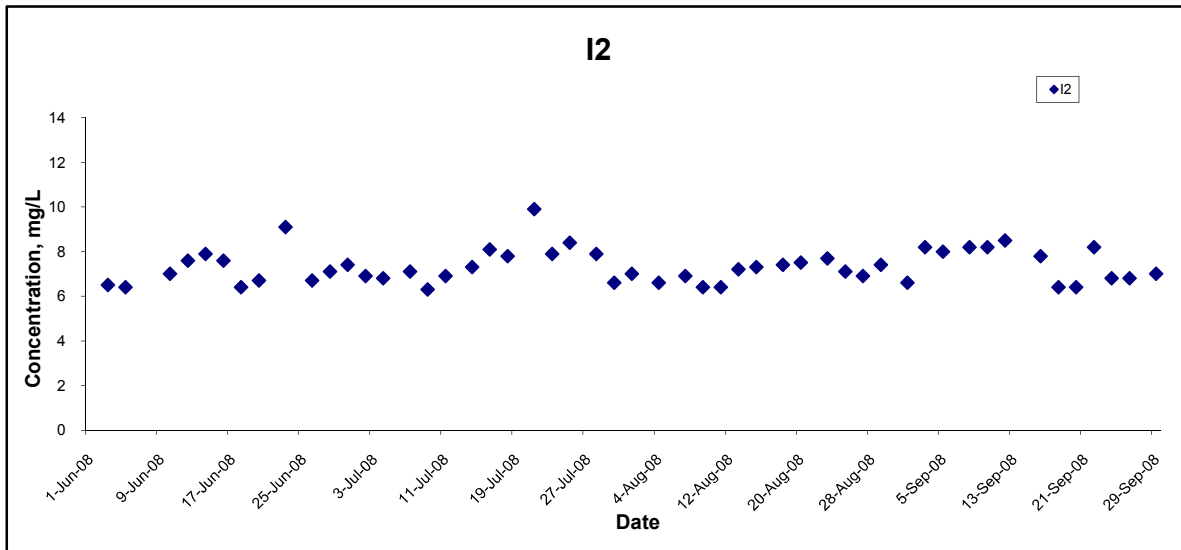
Title Contract No. DC/2007/10 Design and Construction of Hong Kong West Drainage Tunnel  Graphical Presentation of Water Quality Monitoring Results	Scale N.T.S	Project No. MA8001	CINOTECH
	Date Sep 08	Appendix H	

## Dissolved Oxygen (Surface & Middle) at Mid-Flood Tide



Title Contract No. DC/2007/10 Design and Construction of Hong Kong West Drainage Tunnel  Graphical Presentation of Water Quality Monitoring Results	Scale	N.T.S	Project No. MA8001	<b>CINOTECH</b>
	Date	Sep 08	Appendix H	

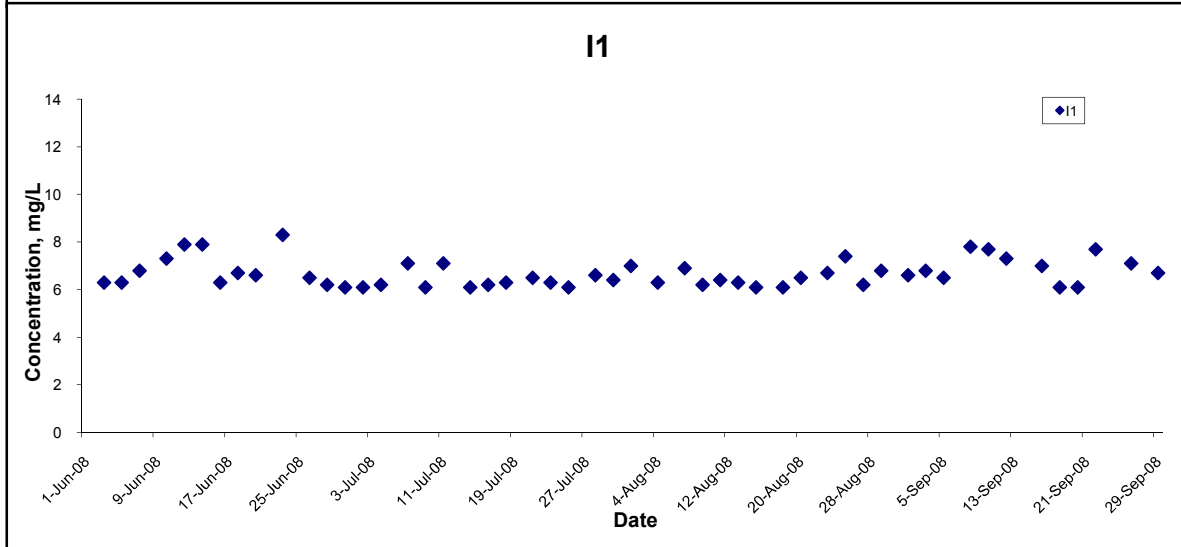
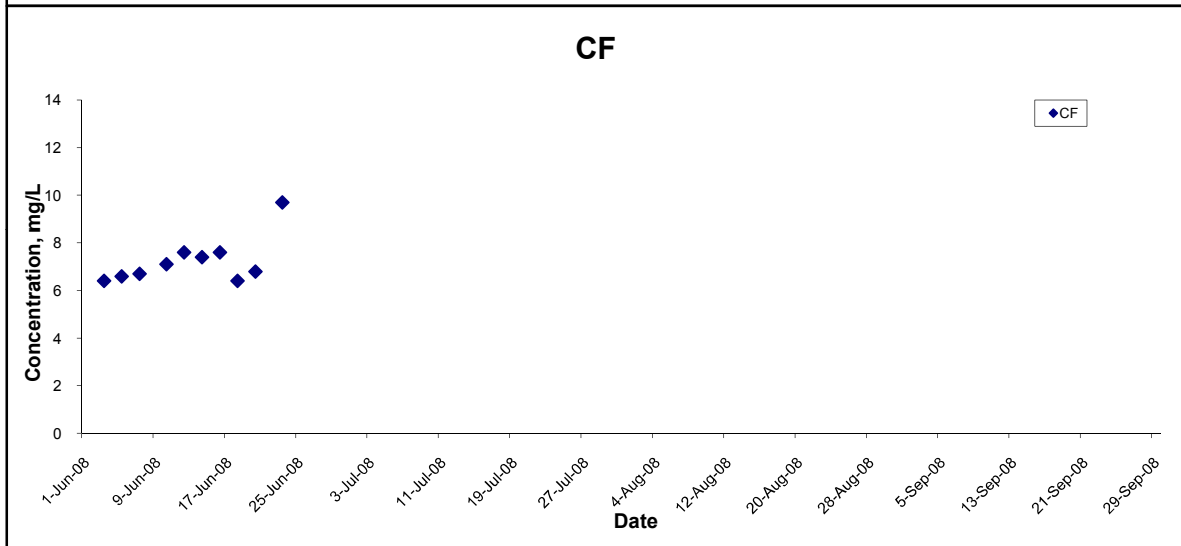
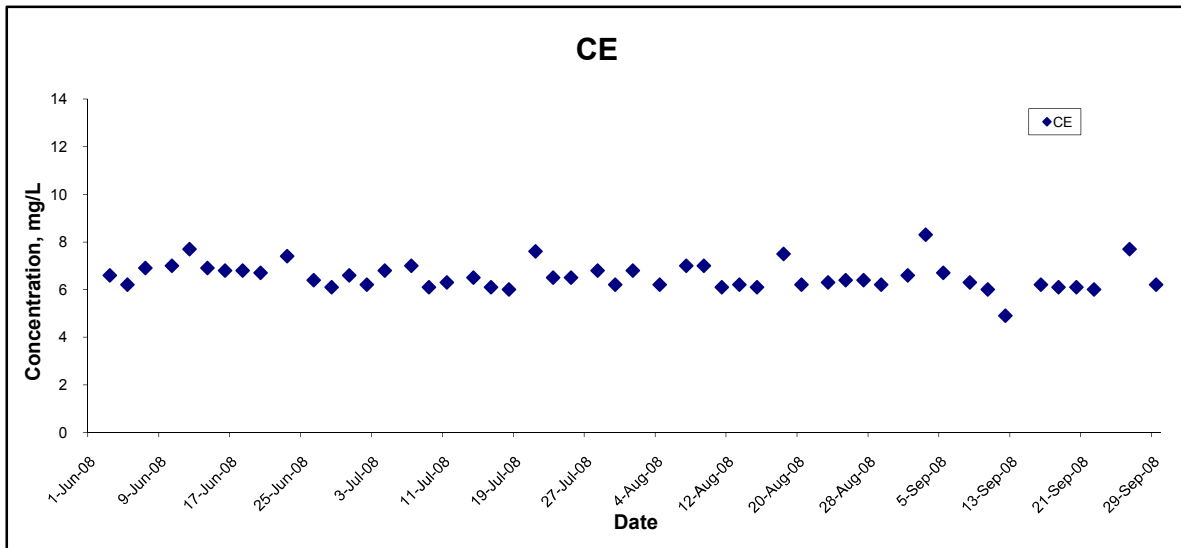
## Dissolved Oxygen (Surface & Middle) at Mid-Flood Tide



Title Contract No. DC/2007/10 Design and Construction of Hong Kong West Drainage Tunnel  Graphical Presentation of Water Quality Monitoring Results	Scale N.T.S	Project No. MA8001	CINOTECH
	Date Sep 08	Appendix H	

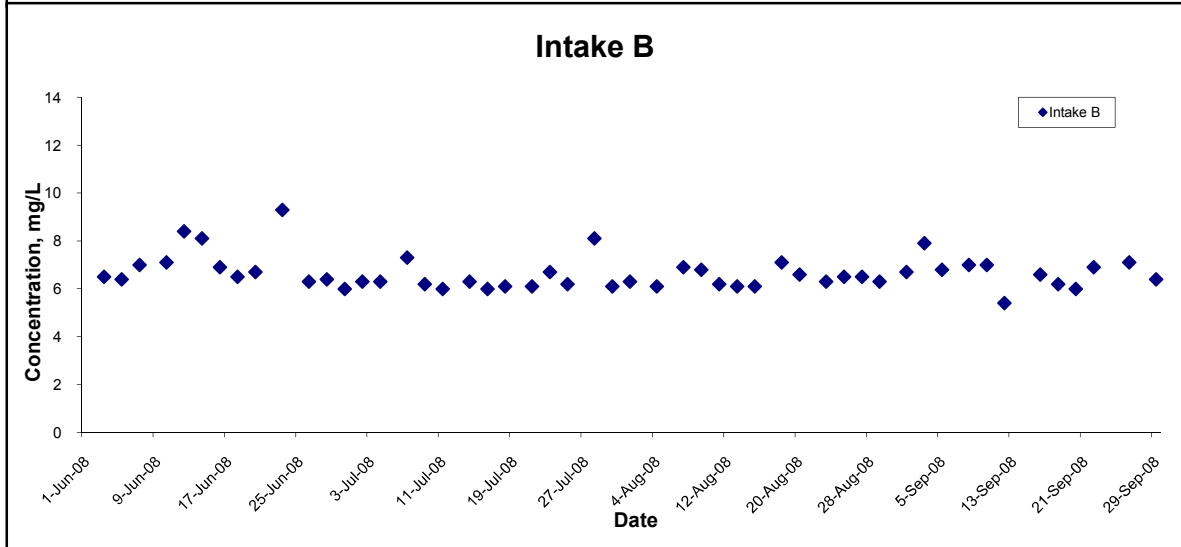
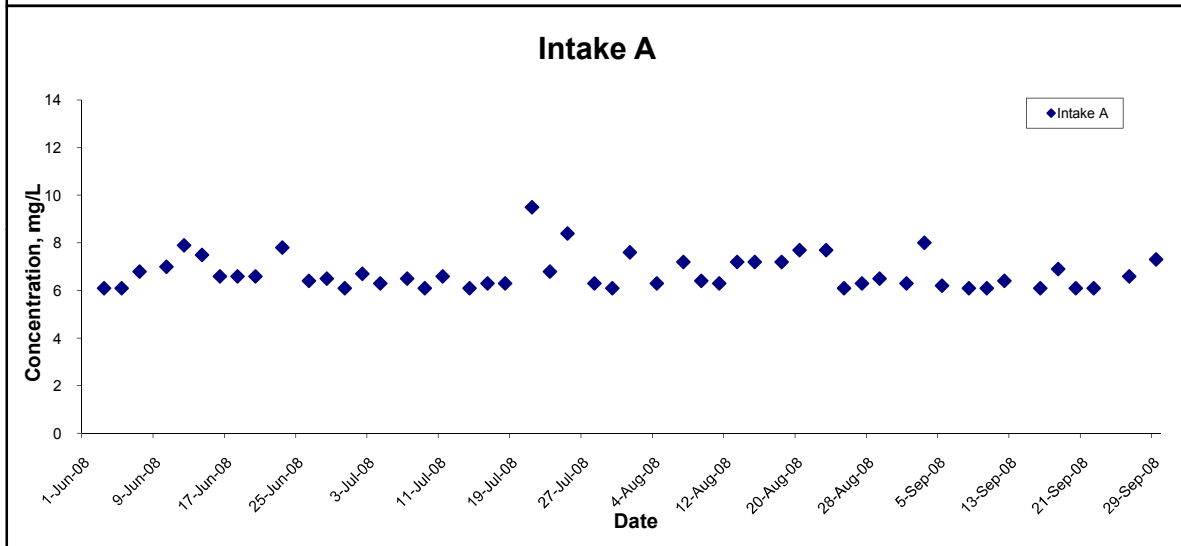
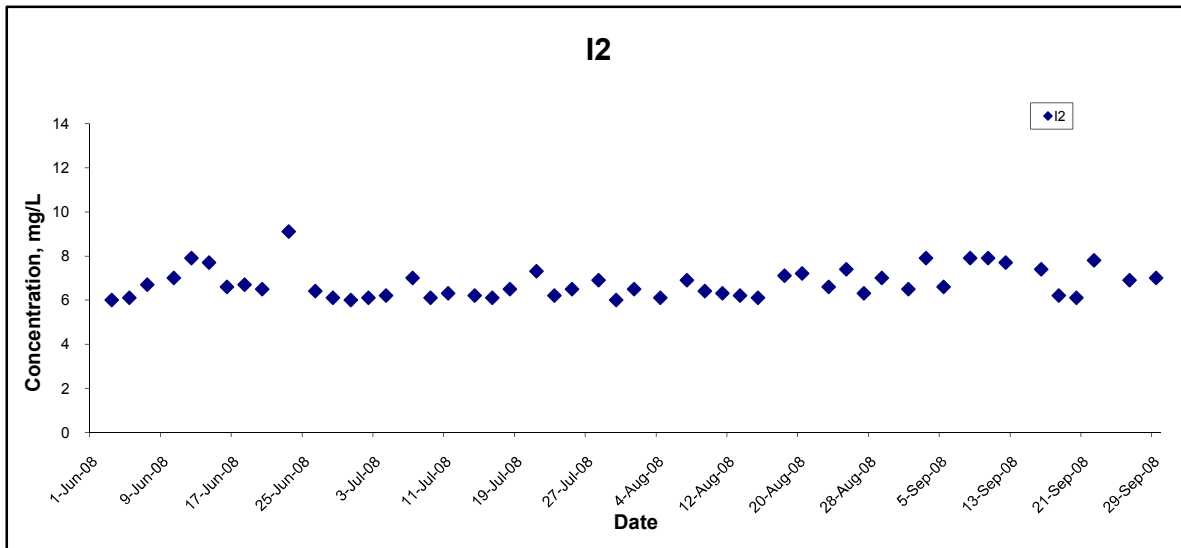


### Dissolved Oxygen (Bottom) at Mid-Ebb Tide



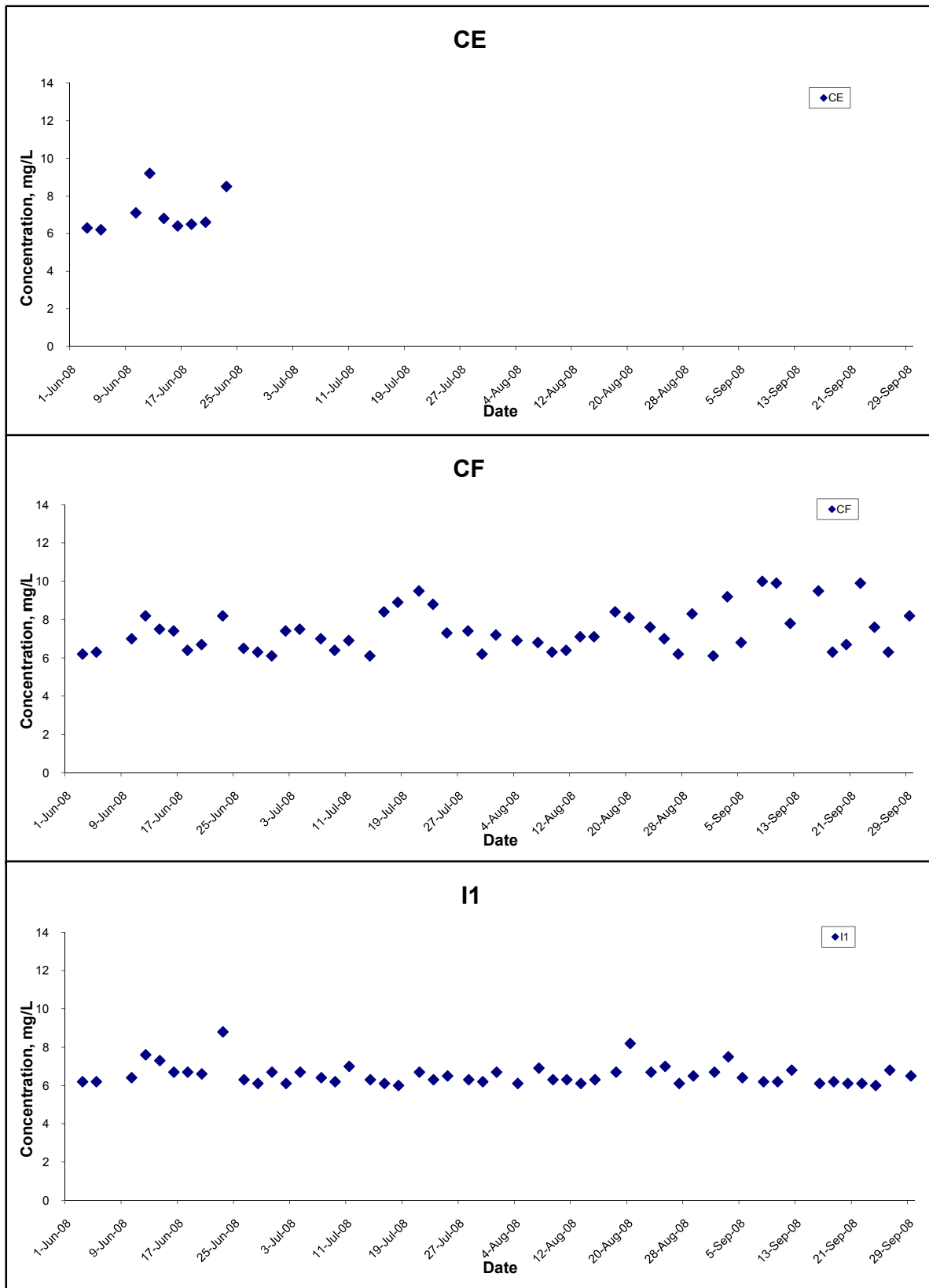
Title Contract No. DC/2007/10 Design and Construction of Hong Kong West Drainage Tunnel  Graphical Presentation of Water Quality Monitoring Results	Scale N.T.S	Project No. MA8001	
	Date Sep 08	Appendix H	

### Dissolved Oxygen (Bottom) at Mid-Ebb Tide



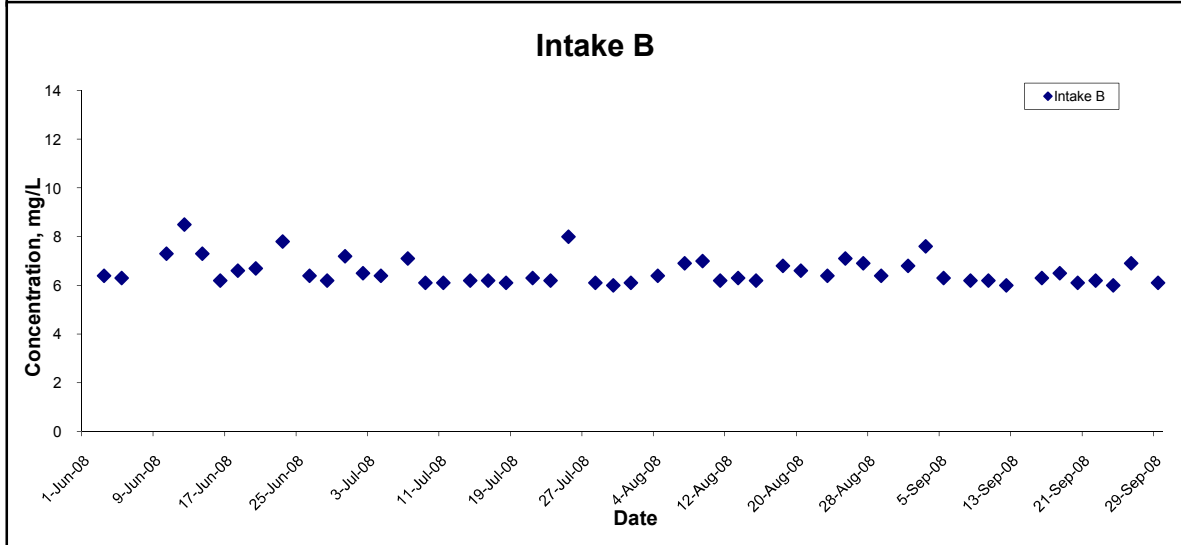
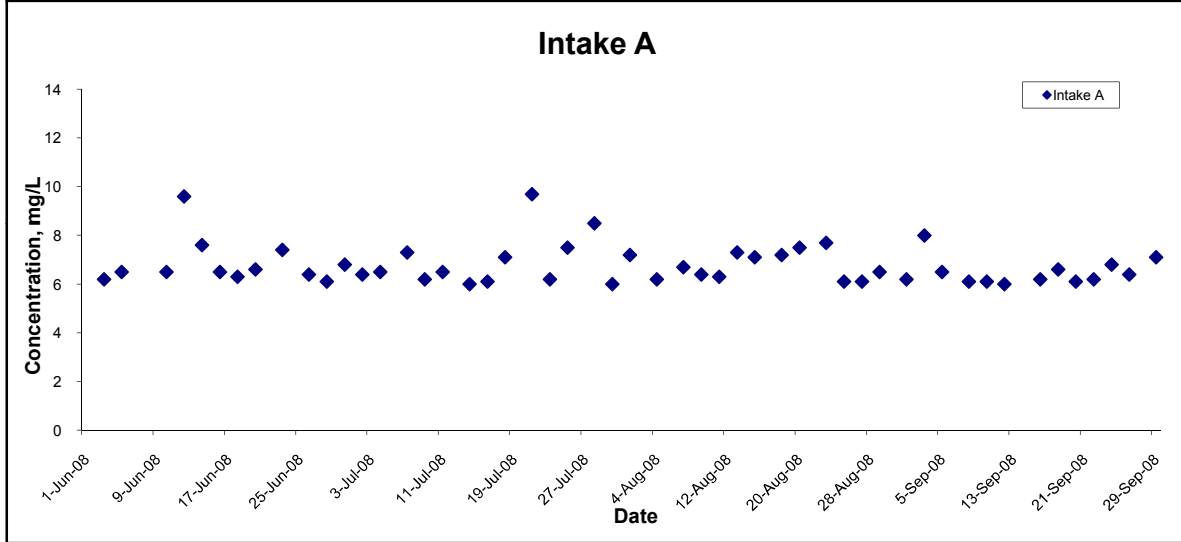
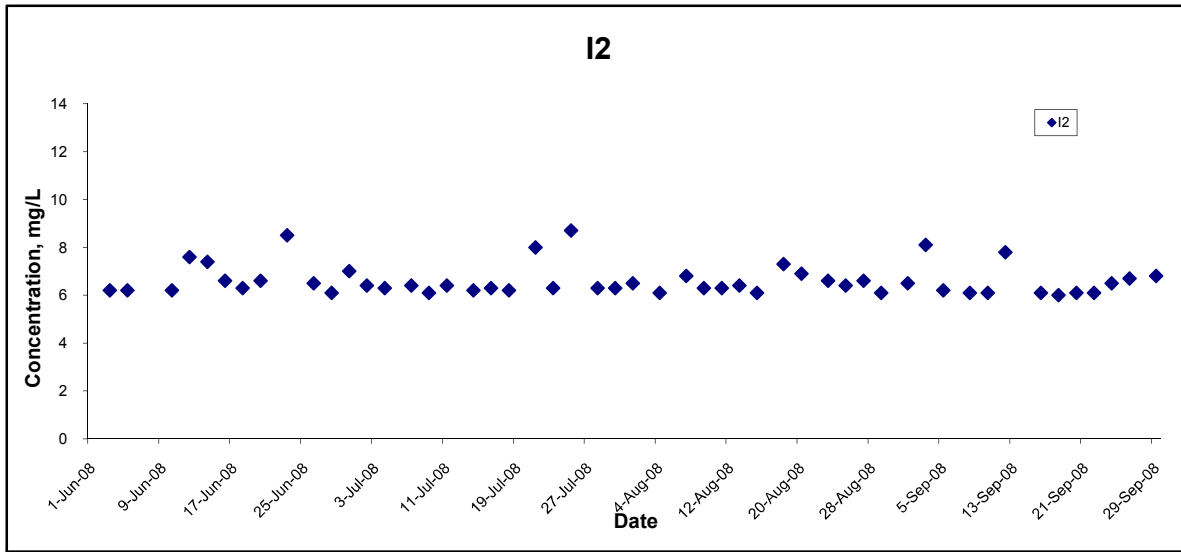
Title Contract No. DC/2007/10 Design and Construction of Hong Kong West Drainage Tunnel  Graphical Presentation of Water Quality Monitoring Results	Scale N.T.S	Project No. MA8001	
	Date Sep 08	Appendix H	

## Dissolved Oxygen (Bottom) at Mid-Flood Tide



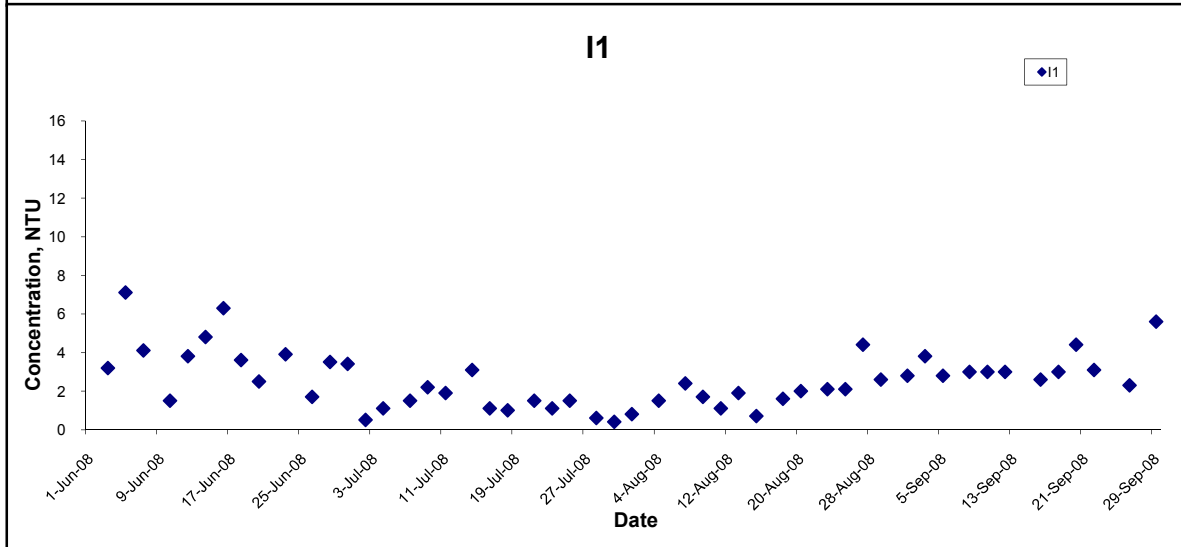
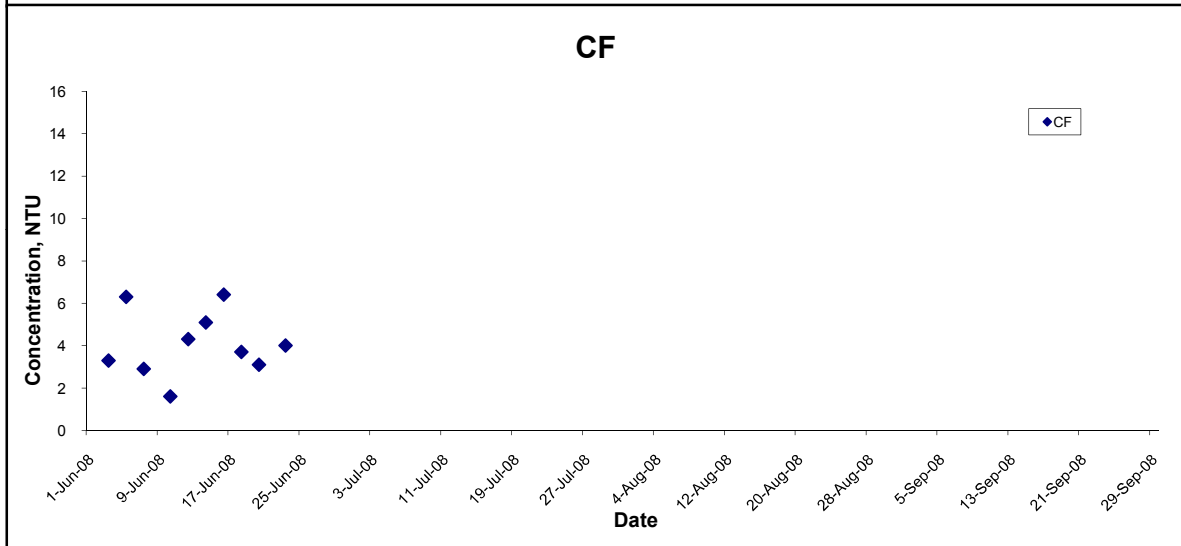
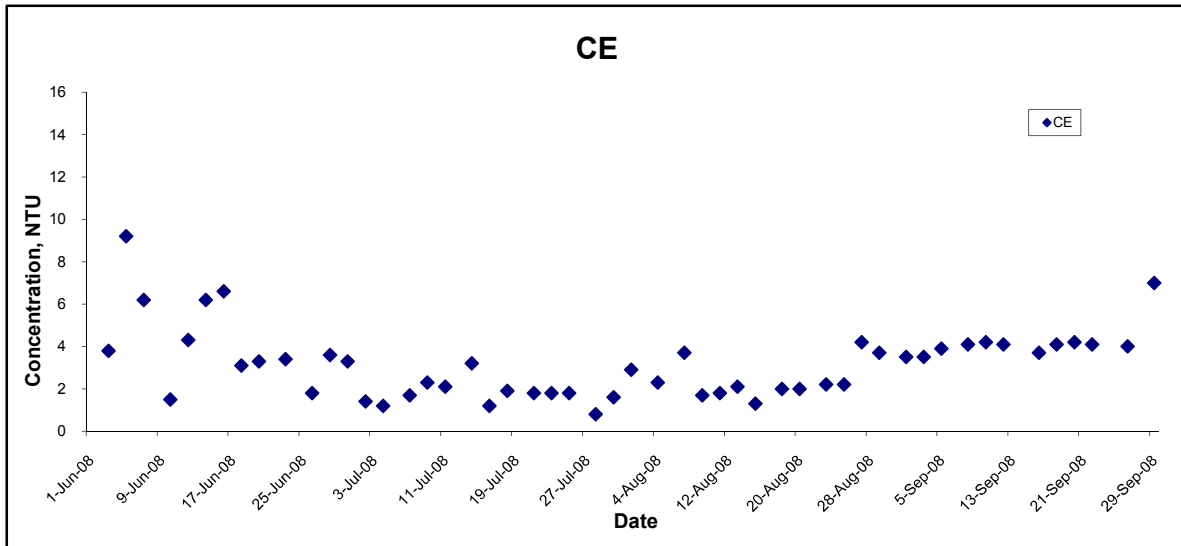
Title Contract No. DC/2007/10 Design and Construction of Hong Kong West Drainage Tunnel  Graphical Presentation of Water Quality Monitoring Results	Scale N.T.S	Project No. MA8001	
	Date Sep 08	Appendix H	

## Dissolved Oxygen (Bottom) at Mid-Flood Tide



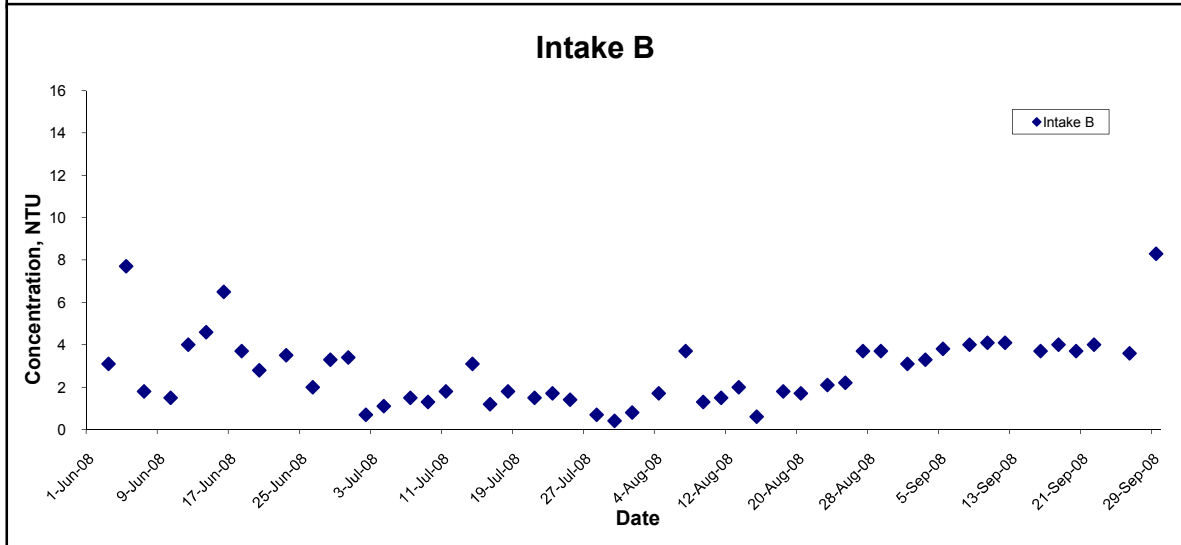
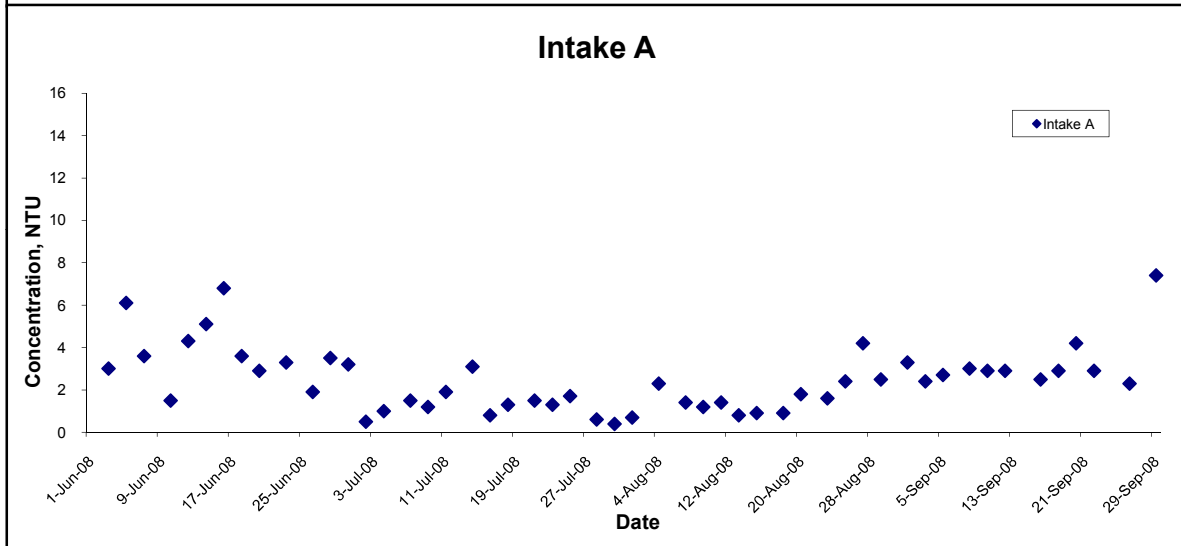
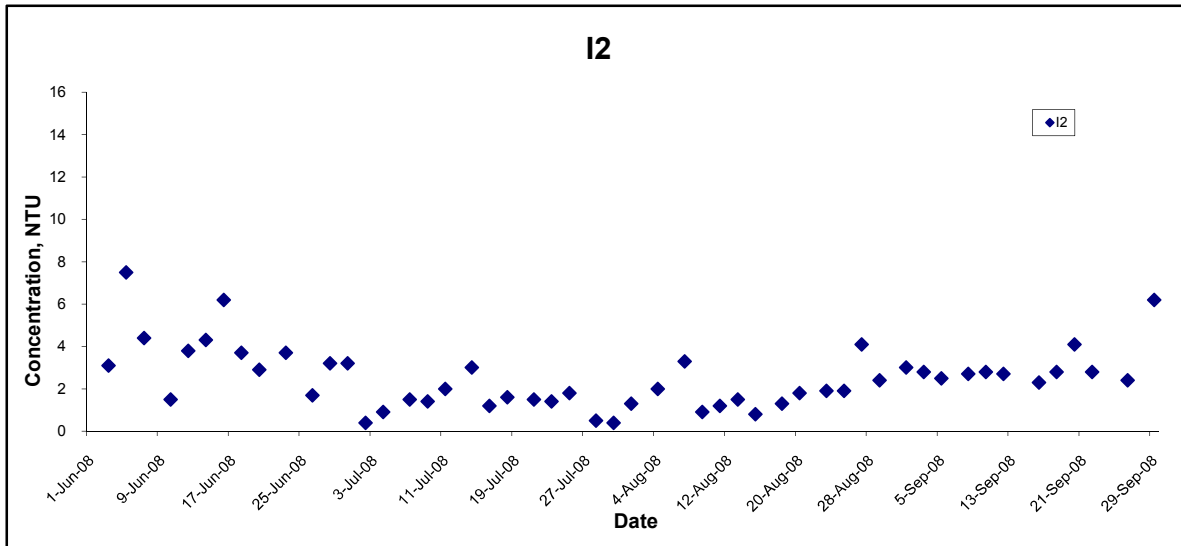
Title Contract No. DC/2007/10 Design and Construction of Hong Kong West Drainage Tunnel  Graphical Presentation of Water Quality Monitoring Results	Scale N.T.S	Project No. MA8001	CINOTECH
	Date Sep 08	Appendix H	

## Turbidity (Depth-averaged) at Mid-Ebb Tide



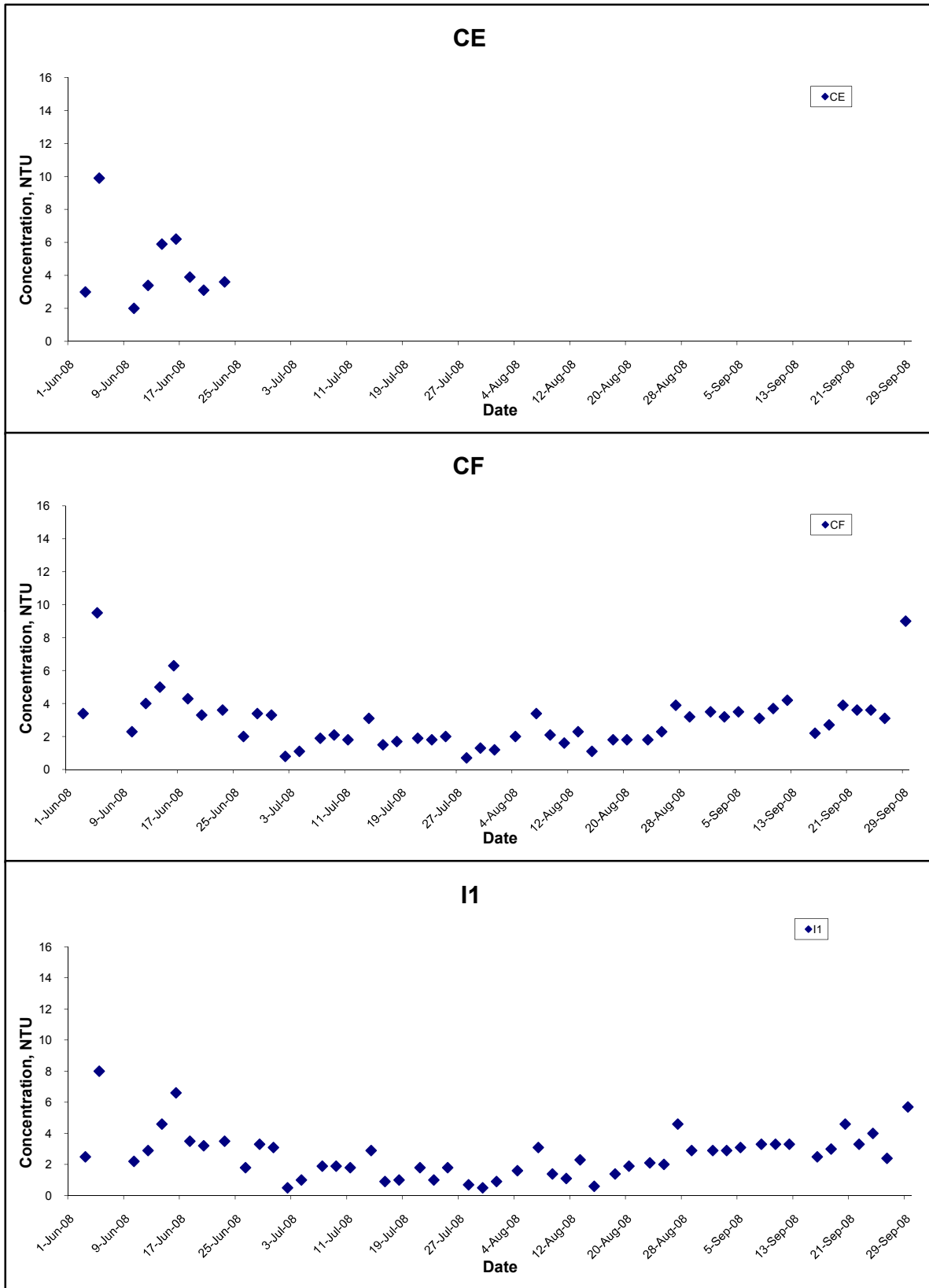
Title Contract No. DC/2007/10 Design and Construction of Hong Kong West Drainage Tunnel  Graphical Presentation of Water Quality Monitoring Results	Scale N.T.S	Project No. MA8001	
	Date Sep 08	Appendix H	

## Turbidity (Depth-averaged) at Mid-Ebb Tide



Title Contract No. DC/2007/10 Design and Construction of Hong Kong West Drainage Tunnel  Graphical Presentation of Water Quality Monitoring Results	Scale N.T.S	Project No. MA8001	
	Date Sep 08	Appendix H	

## Turbidity (Depth-averaged) at Mid-Flood Tide



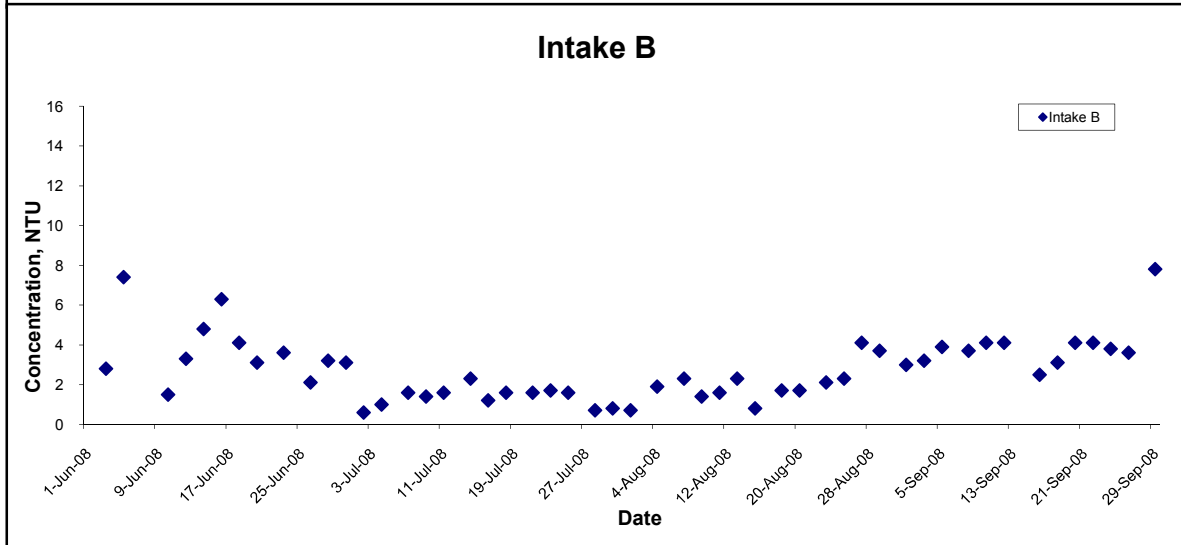
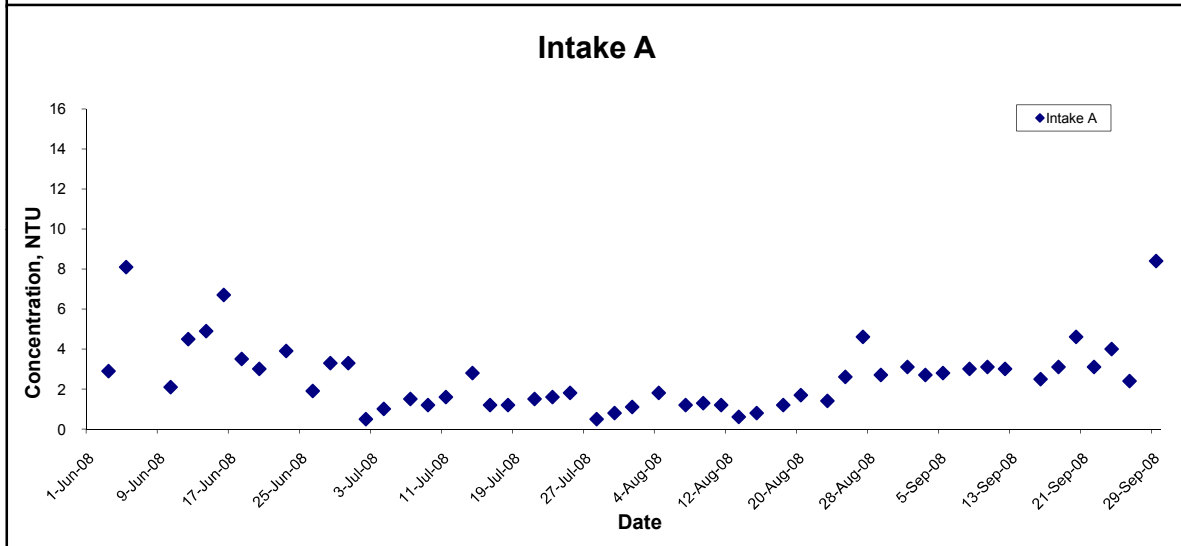
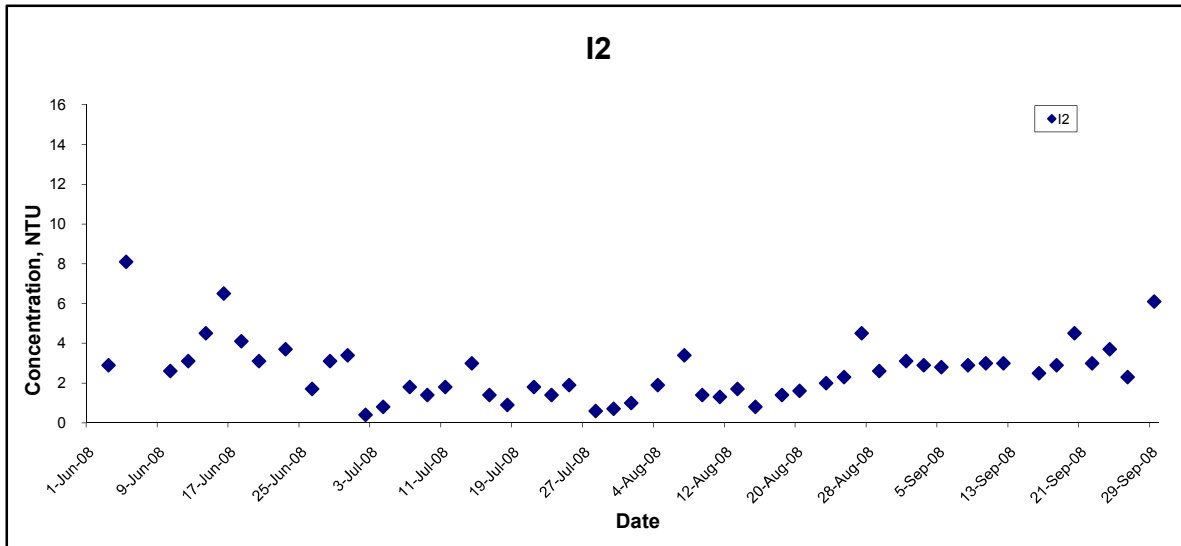
Title  
 Contract No. DC/2007/10  
 Design and Construction of Hong Kong West Drainage Tunnel  
 Graphical Presentation of Water Quality  
 Monitoring Results

Scale  
 N.T.S  
 Date  
 Sep 08

Project  
 No. MA8001  
 Appendix  
 H



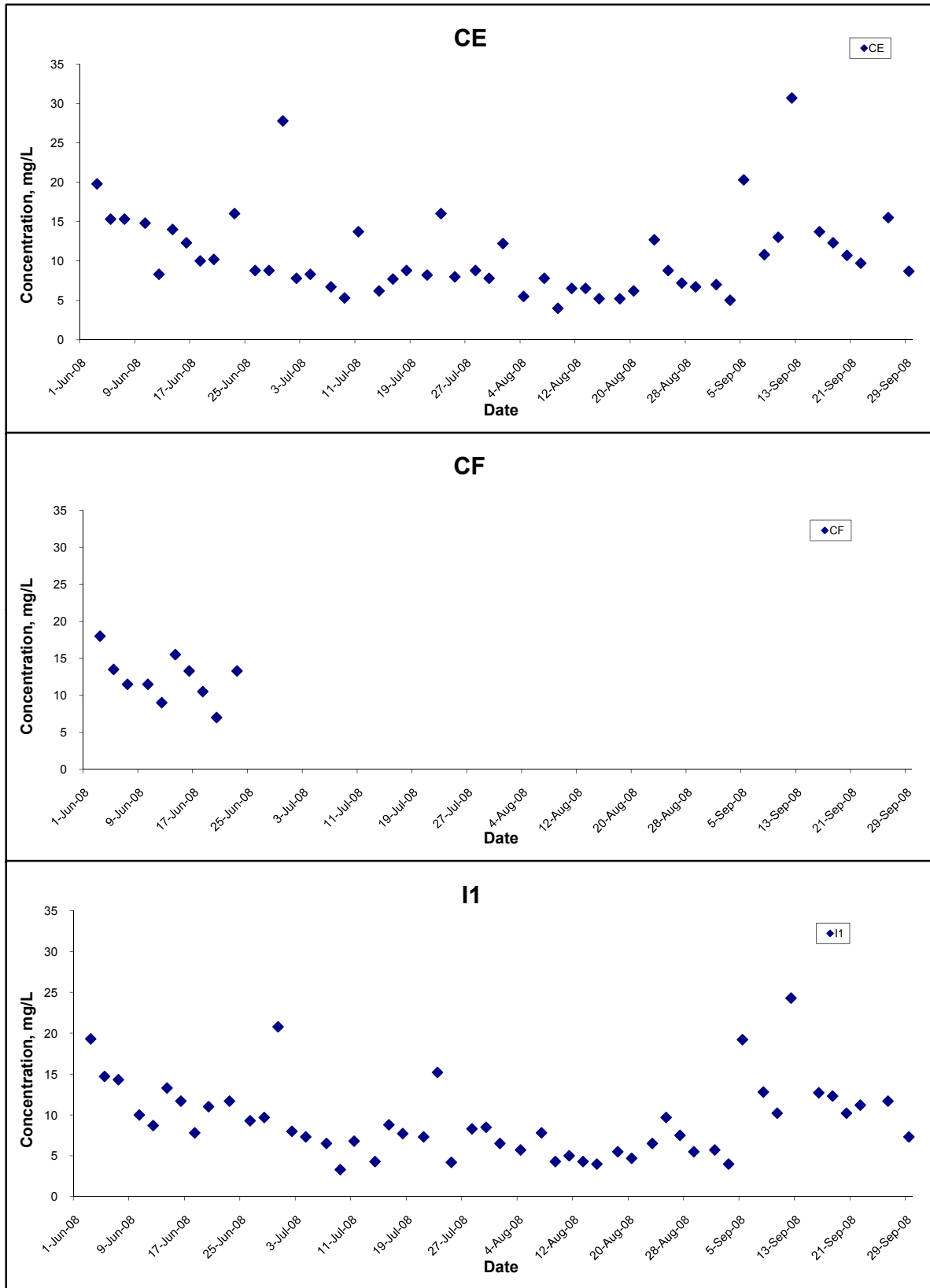
## Turbidity (Depth-averaged) at Mid-Flood Tide



Title Contract No. DC/2007/10 Design and Construction of Hong Kong West Drainage Tunnel  Graphical Presentation of Water Quality Monitoring Results	Scale N.T.S	Project No. MA8001	
	Date Sep 08	Appendix H	

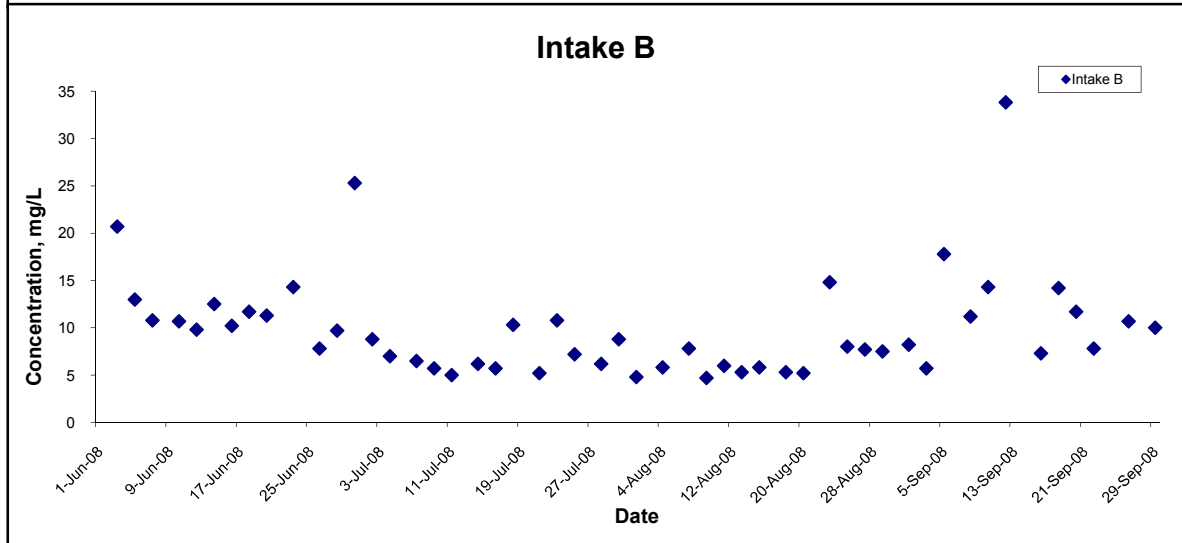
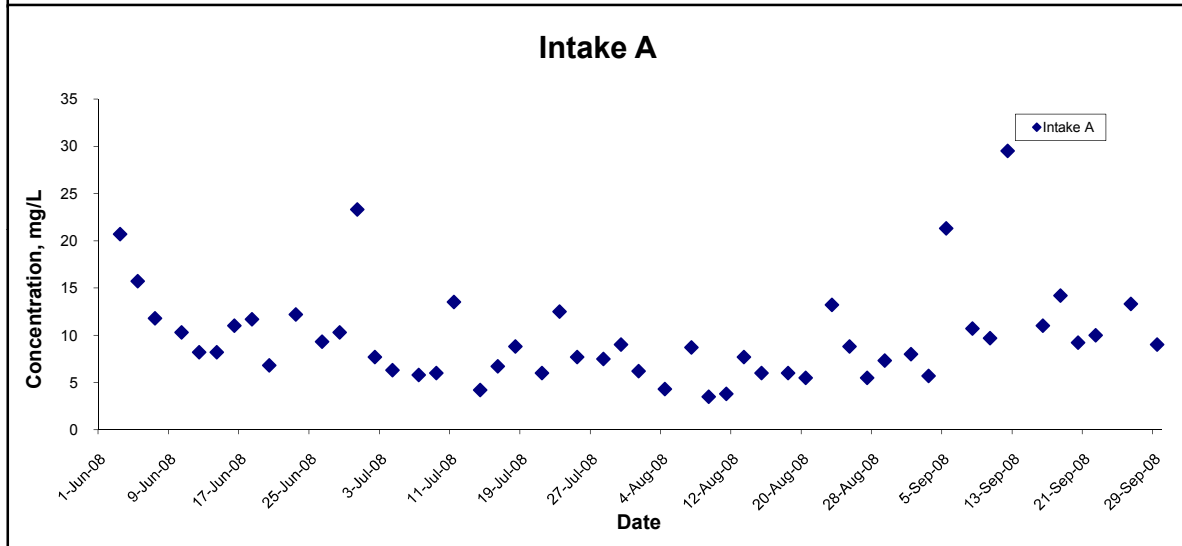
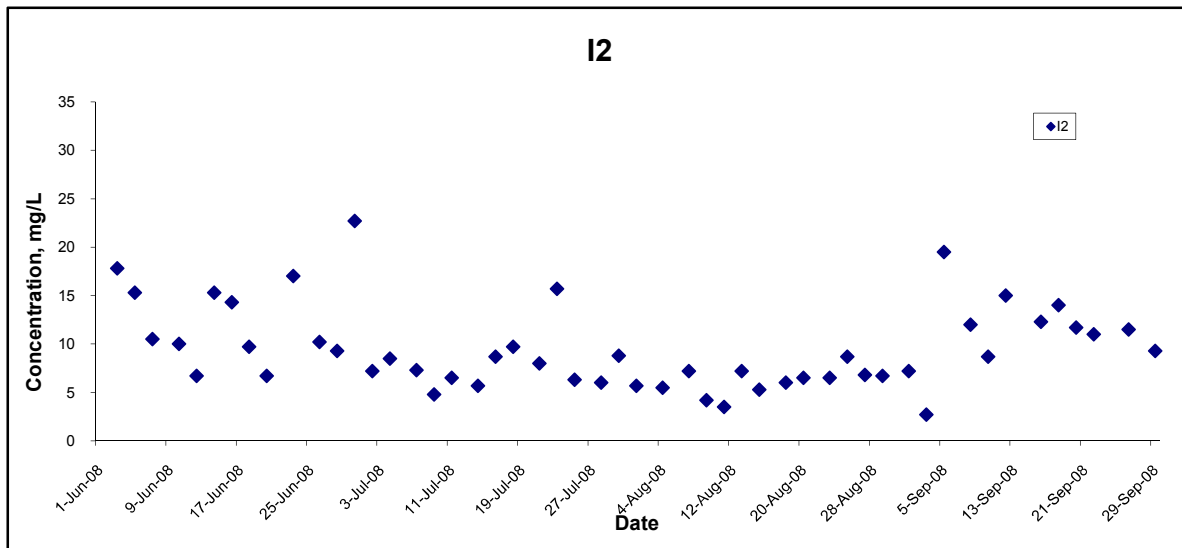


## Suspended Solids (Depth-averaged) at Mid-Ebb Tide



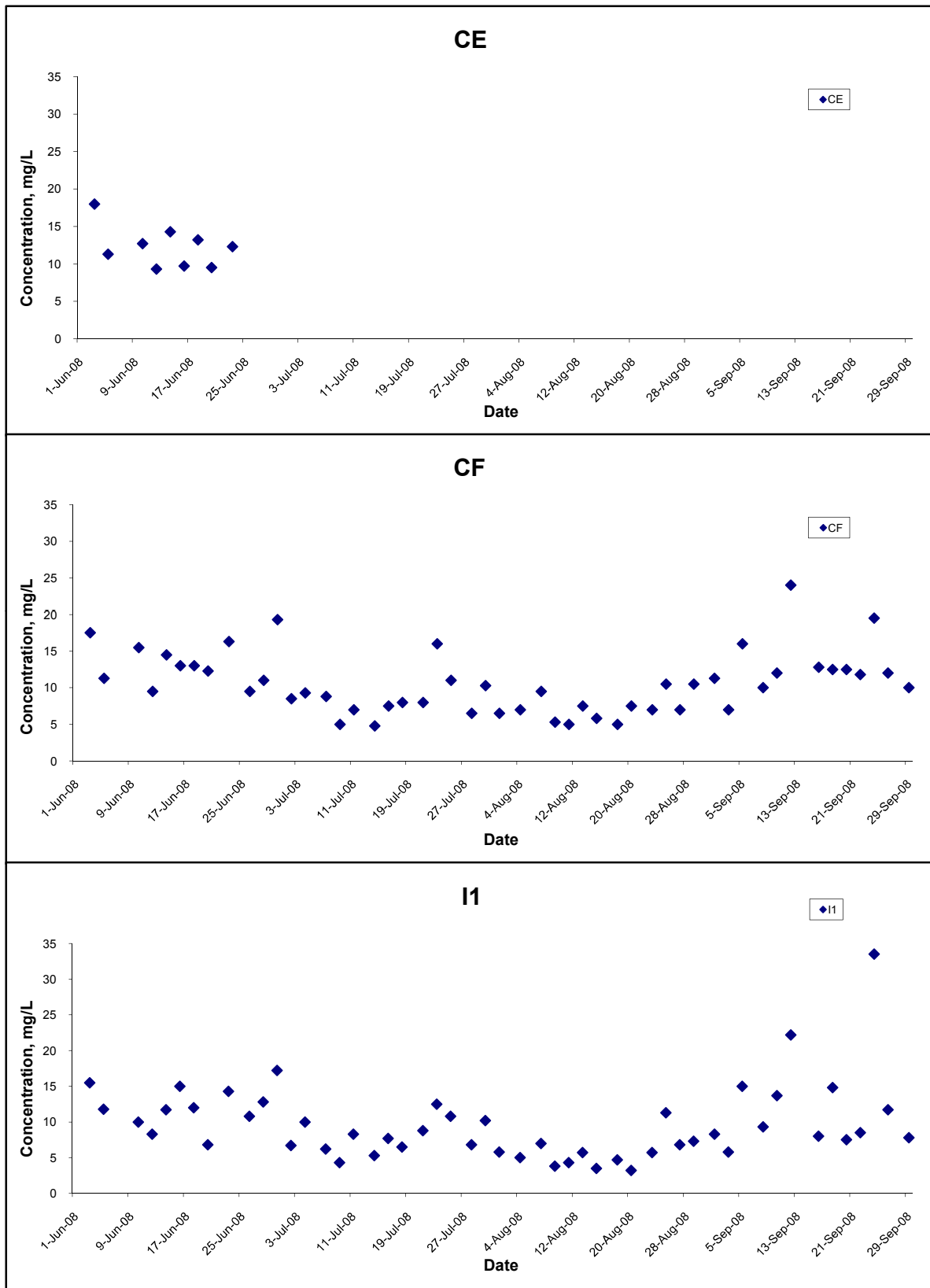
Title Contract No. DC/2007/10 Design and Construction of Hong Kong West Drainage Tunnel  Graphical Presentation of Water Quality Monitoring Results	Scale	N.T.S	Project No. MA8001	<b>CINOTECH</b>
	Date	Sep 08	Appendix H	

## Suspended Solids (Depth-averaged) at Mid-Ebb Tide



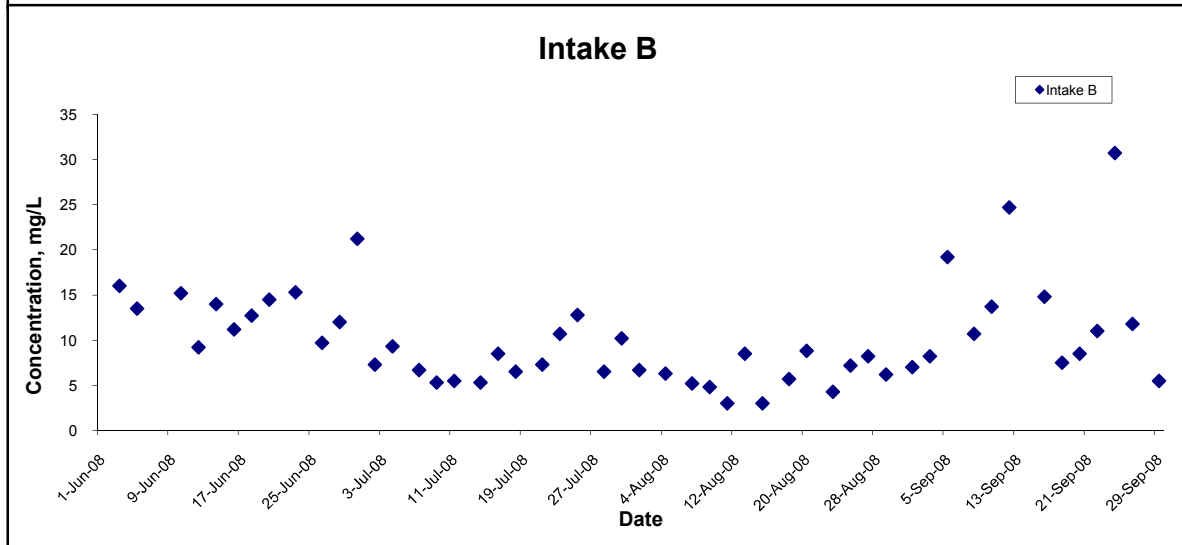
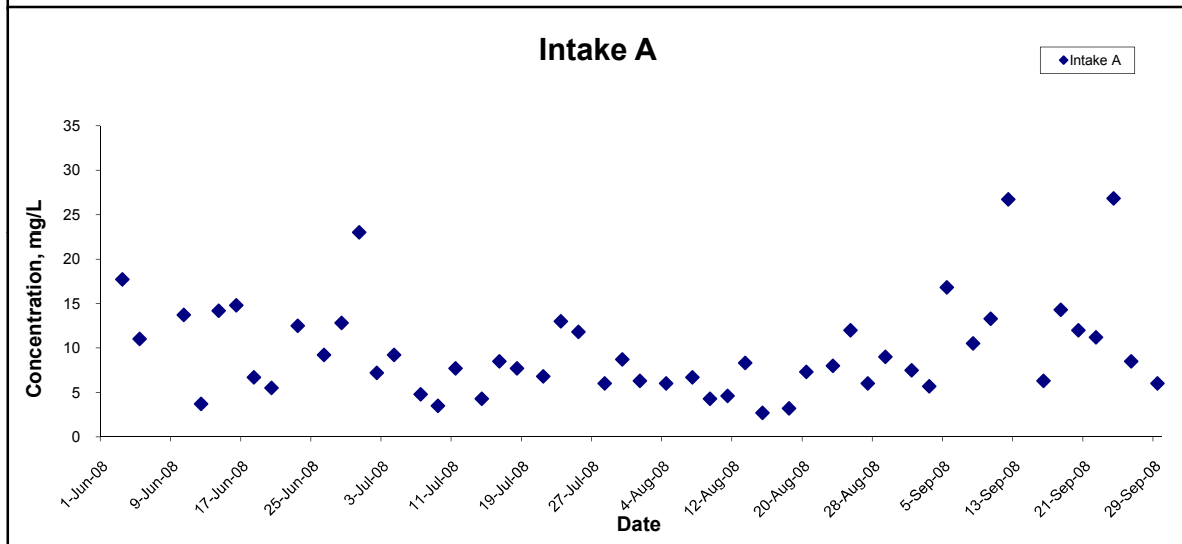
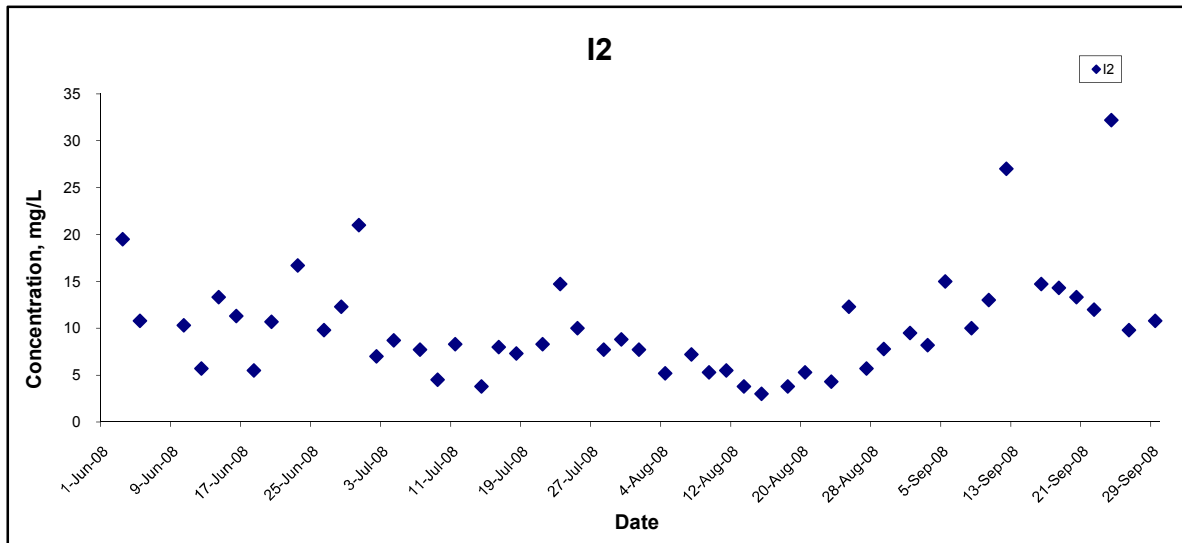
Title Contract No. DC/2007/10 Design and Construction of Hong Kong West Drainage Tunnel  Graphical Presentation of Water Quality Monitoring Results	Scale N.T.S	Project No. MA8001	CINOTECH
	Date Sep 08	Appendix H	

## Suspended Solids (Depth-averaged) at Mid-Flood Tide



Title Contract No. DC/2007/10 Design and Construction of Hong Kong West Drainage Tunnel  Graphical Presentation of Water Quality Monitoring Results	Scale N.T.S	Project No. MA8001	
	Date Sep 08	Appendix H	

## Suspended Solids (Depth-averaged) at Mid-Flood Tide



Title Contract No. DC/2007/10 Design and Construction of Hong Kong West Drainage Tunnel  Graphical Presentation of Water Quality Monitoring Results	Scale N.T.S	Project No. MA8001	
	Date Sep 08	Appendix H	