

Water Quality Monitoring Results at CE - Mid-Ebb Tide

Date	Weather Condition	Sea Condition**	Sampling Time	Depth (m)		Water Temperature (°C)		pH		Salinity ppt		DO Saturation (%)		Dissolved Oxygen (mg/L)			Turbidity (NTU)			Suspended Solids (mg/L)		
						Value	Average	Value	Average	Value	Average	Value	Average	Value	Average	DA*	Value	Average	DA*	Value	Average	DA*
3-Nov-08	Fine	Calm	16:18	Surface	1	26.6 26.7	26.7	7.5 7.8	7.7	31.5 31.6	31.6	88.1 87.0	87.6	6.3 6.3	6.3	6.4	3.4 3.5	3.5	3.9	12.0 12.0	12.0	11.5
				Middle	5.5	26.5 26.5	26.5	7.9 7.6	7.8	32.0 32.0	32.0	87.7 88.6	88.2	6.4 6.4	6.4		3.8 4.0	3.9		15.0 15.0	15.0	
				Bottom	10	25.9 26.0	26.0	7.8 8.2	8.0	31.7 31.8	31.8	92.2 91.7	92.0	6.7 6.7	6.7		4.4 4.4	4.4		7.0 8.0	7.5	
7-Nov-08	Fine	Calm	08:13	Surface	1	26.7 26.7	26.7	7.7 8.3	8.0	29.7 30.0	29.9	78.2 75.2	76.7	6.8 6.6	6.7	6.6	2.8 2.8	2.8	3.1	9.0 9.0	9.0	10.7
				Middle	5.5	26.5 26.5	26.5	7.9 8.1	8.0	30.0 30.4	30.2	74.7 70.7	72.7	6.5 6.2	6.4		3.1 3.0	3.1		12.0 12.0	12.0	
				Bottom	10	26.0 26.0	26.0	8.2 8.2	8.2	30.4 29.4	29.9	75.0 77.3	76.2	6.4 6.7	6.6		3.4 3.6	3.5		11.0 11.0	11.0	
10-Nov-08	Cloudy	Calm	10:16	Surface	1	25.7 25.7	25.7	7.4 7.3	7.4	30.8 31.0	30.9	80.7 78.2	79.5	6.5 6.3	6.4	6.3	2.4 2.3	2.4	2.8	12.0 12.0	12.0	11.7
				Middle	5.5	25.6 25.6	25.6	8.1 7.8	8.0	30.9 31.1	31.0	77.7 75.7	76.7	6.2 6.1	6.2		2.9 2.7	2.8		13.0 13.0	13.0	
				Bottom	10	25.4 25.4	25.4	7.5 8.0	7.8	31.3 30.6	31.0	75.3 79.0	77.2	6.1 6.3	6.2		3.2 3.2	3.2		10.0 10.0	10.0	
12-Nov-08	Fine	Calm	12:16	Surface	1	25.2 25.3	25.3	7.6 7.8	7.7	31.3 31.3	31.3	93.9 92.1	93.0	6.1 6.0	6.1	6.3	2.6 2.6	2.6	2.8	10.0 10.0	10.0	12.5
				Middle	6	24.9 24.9	24.9	7.9 7.9	7.9	31.3 31.3	31.3	95.8 95.5	95.7	6.5 6.5	6.5		2.8 2.8	2.8		16.0 15.0	15.5	
				Bottom	11	24.8 24.8	24.8	7.7 7.9	7.8	31.6 31.4	31.5	84.5 84.3	84.4	6.2 6.2	6.2		2.9 3.0	3.0		12.0 12.0	12.0	
14-Nov-08	Sunny	Calm	13:25	Surface	1	25.4 25.4	25.4	7.6 7.8	7.7	31.4 31.4	31.4	89.4 88.7	89.1	6.2 6.1	6.2	6.4	3.1 3.2	3.2	3.5	13.0 13.0	13.0	11.8
				Middle	6	25.1 25.1	25.1	8.1 7.8	8.0	31.5 31.5	31.5	90.6 90.4	90.5	6.5 6.5	6.5		3.4 3.5	3.5		11.0 10.0	10.5	
				Bottom	11	25.1 25.1	25.1	8.0 8.5	8.3	31.7 31.6	31.7	84.6 84.5	84.6	6.2 6.2	6.2		3.8 3.8	3.8		12.0 12.0	12.0	
17-Nov-08	Sunny	Calm	16:25	Surface	1	25.3 25.3	25.3	7.7 7.8	7.8	31.3 31.3	31.3	93.6 91.8	92.7	6.1 6.0	6.1	6.4	2.9 2.9	2.9	3.2	9.0 9.0	9.0	11.3
				Middle	6	25.0 25.0	25.0	7.6 8.0	7.8	31.4 31.4	31.4	95.7 95.9	95.8	6.7 6.7	6.7		3.1 3.2	3.2		13.0 13.0	13.0	
				Bottom	11	24.9 24.9	24.9	8.0 8.1	8.1	31.6 31.5	31.6	84.5 84.3	84.4	6.2 6.2	6.2		3.3 3.4	3.4		12.0 12.0	12.0	
19-Nov-08	Fine	Calm	17:50	Surface	1	25.3 25.3	25.3	7.7 7.6	7.7	30.5 30.5	30.5	86.8 84.8	85.8	6.4 6.4	6.4	6.4	3.3 3.3	3.3	4.3	12.0 12.0	12.0	11.8
				Middle	5.5	25.3 25.3	25.3	8.2 8.1	8.2	30.2 30.3	30.3	84.3 84.3	84.3	6.3 6.3	6.3		4.8 4.8	4.8		9.0 10.0	9.5	
				Bottom	10	25.3 25.3	25.3	7.6 8.1	7.9	30.6 30.4	30.5	84.1 84.3	84.2	6.2 6.2	6.2		4.8 4.8	4.8		14.0 14.0	14.0	
21-Nov-08	Sunny	Calm	08:33	Surface	1	26.2 26.4	26.3	7.5 6.8	7.2	28.2 28.0	28.1	88.9 91.3	90.1	6.0 6.1	6.1	6.4	2.9 3.1	3.0	3.8	13.0 13.0	13.0	12.5
				Middle	5.5	25.7 25.7	25.7	8.2 8.3	8.3	28.8 29.0	28.9	102.1 98.2	100.2	6.8 6.4	6.6		3.6 3.8	3.7		11.0 11.0	11.0	
				Bottom	10	25.2 25.0	25.1	7.0 7.7	7.4	29.2 29.4	29.3	70.6 70.0	70.3	6.1 6.0	6.1		4.7 4.5	4.6		14.0 13.0	13.5	
24-Nov-08	Sunny	Calm	11:25	Surface	1	25.1 25.1	25.1	7.8 7.5	7.7	31.2 31.2	31.2	96.0 94.2	95.1	6.2 6.2	6.2	6.4	3.1 3.2	3.2	3.6	8.0 8.0	8.0	12.5
				Middle	5.5	24.8 24.7	24.8	8.2 8.2	8.2	31.3 31.3	31.3	98.2 98.4	98.3	6.4 6.5	6.5		3.6 3.6	3.6		16.0 15.0	15.5	
				Bottom	10	24.7 24.6	24.7	7.7 8.2	8.0	31.5 31.4	31.5	95.2 95.4	95.3	6.3 6.3	6.3		4.0 4.0	4.0		14.0 14.0	14.0	
26-Nov-08	Sunny	Calm	12:06	Surface	1	23.7 23.7	23.7	8.0 7.7	7.9	28.7 28.7	28.7	92.7 92.1	92.4	7.0 7.0	7.0	6.9	1.7 1.6	1.7	2.3	16.0 16.0	16.0	14.8
				Middle	5.5	22.8 22.8	22.8	8.6 8.4	8.5	30.8 30.9	30.9	88.6 88.0	88.3	6.8 6.7	6.8		2.3 2.4	2.4		16.0 16.0	16.0	
				Bottom	10	23.5 23.5	23.5	7.8 8.5	8.2	30.2 30.6	30.4	88.1 84.1	86.1	6.7 6.5	6.6		2.8 2.9	2.9		12.0 13.0	12.5	
28-Nov-08	Sunny	Calm	13:01	Surface	1	22.9 22.9	22.9	7.7 6.6	7.2	33.9 33.9	33.9	90.0 90.1	90.1	6.4 6.4	6.4	6.4	2.2 2.3	2.3	2.4	13.0 13.0	13.0	13.3
				Middle	5.5	22.8 22.8	22.8	8.1 8.2	8.2	34.0 34.0	34.0	88.4 88.1	88.3	6.3 6.3	6.3		2.3 2.2	2.3		13.0 13.0	13.0	
				Bottom	10	22.8 22.8	22.8	6.8 7.7	7.3	34.0 34.0	34.0	86.2 86.2	86.2	6.1 6.1	6.1		2.7 2.7	2.7		14.0 14.0	14.0	

Remarks: * DA: Depth-Averaged
 ** Calm: Small or no wave; Moderate: Between calm and rough; Rough: White capped or rougher

Water Quality Monitoring Results at CF - Mid-Flood Tide

Date	Weather Condition	Sea Condition**	Sampling Time	Depth (m)		Water Temperature (°C)		pH		Salinity ppt		DO Saturation (%)		Dissolved Oxygen (mg/L)			Turbidity(NTU)			Suspended Solids (mg/L)				
						Value	Average	Value	Average	Value	Average	Value	Average	Value	Average	DA*	Value	Average	DA*	Value	Average	DA*		
3-Nov-08	Fine	Calm	10:06	Surface	1	26.9	26.9	7.6	7.8	31.3	31.2	91.8	90.6	6.6	6.5	6.5	2.5	2.5	3.0	14.0	14.0	11.8		
				Middle	-	-	-	-	-	-	-	-	-	-	-		-	-		-	-		-	-
				Bottom	3	26.5	26.5	8.1	8.1	31.3	31.4	85.9	85.8	6.5	6.5		6.5	3.3		3.4	9.0		10.0	9.5
5-Nov-08	Cloudy	Calm	16:10	Surface	1	27.2	27.3	8.4	8.5	30.8	30.9	96.4	97.0	6.6	6.6	6.6	2.5	2.5	3.0	12.0	12.0	11.5		
				Middle	-	-	-	-	-	-	-	-	-	-	-		-	-		-	-		-	-
				Bottom	3	27.3	27.3	8.2	8.3	31.1	31.0	96.3	96.2	6.4	6.4		6.4	3.4		3.5	11.0		11.0	11.0
7-Nov-08	Fine	Calm	15:48	Surface	1	27.0	27.0	7.9	7.9	29.5	29.6	87.1	88.5	6.9	7.0	7.0	2.1	2.1	2.5	15.0	14.5	12.3		
				Middle	-	-	-	-	-	-	-	-	-	-	-		-	-		-	-		-	-
				Bottom	3	26.3	26.3	7.9	8.0	30.1	30.2	76.5	77.1	6.2	6.2		6.2	2.9		2.9	10.0		10.0	10.0
10-Nov-08	Fine	Calm	15:45	Surface	1	25.8	25.8	7.5	7.8	30.3	30.4	86.2	86.6	6.8	6.9	6.9	2.1	2.2	2.6	14.0	14.0	12.0		
				Middle	-	-	-	-	-	-	-	-	-	-	-		-	-		-	-		-	-
				Bottom	3	25.5	25.5	8.2	8.1	30.9	31.0	79.4	79.6	6.4	6.4		6.4	2.9		2.9	10.0		10.0	10.0
12-Nov-08	Fine	Calm	16:33	Surface	1	25.8	25.8	7.8	7.9	29.5	29.5	91.4	91.4	6.5	6.5	6.5	2.1	2.2	2.6	10.0	10.0	10.0		
				Middle	-	-	-	-	-	-	-	-	-	-	-		-	-		-	-		-	-
				Bottom	3	25.3	25.3	8.0	8.0	30.5	30.4	87.3	86.9	6.1	6.1		6.1	2.9		3.0	10.0		10.0	10.0
14-Nov-08	Fine	Calm	17:09	Surface	1	25.2	25.3	8.1	8.3	30.2	30.3	93.4	91.9	6.4	6.4	6.4	2.1	2.1	2.3	16.0	16.0	14.5		
				Middle	-	-	-	-	-	-	-	-	-	-	-		-	-		-	-		-	-
				Bottom	3	25.2	25.2	8.4	8.4	30.9	30.9	92.1	91.5	6.3	6.3		6.3	2.5		2.5	13.0		13.0	13.0
17-Nov-08	Sunny	Calm	10:10	Surface	1	25.5	25.5	7.8	7.8	29.9	29.9	92.3	92.4	6.4	6.4	6.4	1.9	1.9	2.4	11.0	11.0	12.0		
				Middle	-	-	-	-	-	-	-	-	-	-	-		-	-		-	-		-	-
				Bottom	3	25.3	25.3	7.9	8.0	30.7	30.6	89.6	88.9	6.1	6.2		6.2	2.9		2.9	13.0		13.0	13.0
19-Nov-08	Fine	Calm	13:15	Surface	1	25.2	25.3	7.9	8.2	29.6	29.7	98.8	98.2	7.3	7.3	7.3	2.0	2.1	2.1	17.0	17.0	14.5		
				Middle	-	-	-	-	-	-	-	-	-	-	-		-	-		-	-		-	-
				Bottom	3	25.3	25.3	8.6	8.5	30.1	30.1	95.8	95.7	7.0	7.0		7.0	2.0		2.1	12.0		12.0	12.0
21-Nov-08	Sunny	Calm	14:15	Surface	1	26.6	26.7	7.3	7.5	27.1	27.2	115.8	115.7	7.5	7.4	7.4	2.2	2.3	2.5	11.0	11.0	12.0		
				Middle	-	-	-	-	-	-	-	-	-	-	-		-	-		-	-		-	-
				Bottom	3	26.7	26.5	8.2	8.0	27.5	27.3	98.6	101.2	6.2	6.2		6.2	2.5		2.6	13.0		13.0	13.0
24-Nov-08	Sunny	Calm	15:08	Surface	1	24.9	24.9	7.8	7.9	30.5	30.6	96.0	95.1	6.5	6.5	6.5	2.1	2.1	2.5	11.0	11.0	12.0		
				Middle	-	-	-	-	-	-	-	-	-	-	-		-	-		-	-		-	-
				Bottom	3	24.9	24.9	8.3	8.2	31.0	31.0	94.2	93.9	6.4	6.4		6.4	2.8		2.8	13.0		13.0	13.0
26-Nov-08	Sunny	Calm	15:48	Surface	1	24.0	24.0	8.1	8.3	29.6	29.4	84.4	84.4	6.5	6.5	6.5	2.1	2.1	2.4	11.0	11.0	15.0		
				Middle	-	-	-	-	-	-	-	-	-	-	-		-	-		-	-		-	-
				Bottom	3	23.5	23.5	8.7	8.6	30.2	30.2	77.6	77.0	6.1	6.1		6.1	2.6		2.6	19.0		19.0	19.0
28-Nov-08	Fine	Calm	17:11	Surface	1	22.7	22.8	7.3	7.6	33.0	33.1	106.6	105.6	7.6	7.5	7.5	4.0	3.8	3.4	14.0	13.5	12.8		
				Middle	-	-	-	-	-	-	-	-	-	-	-		-	-		-	-		-	-
				Bottom	3	22.9	22.9	8.2	8.0	33.4	33.5	101.9	101.7	7.2	7.2		7.2	3.0		3.0	12.0		12.0	12.0

Remarks: * DA: Depth-Averaged
 ** Calm: Small or no wave; Moderate: Between calm and rough; Rough : White capped or rougher

Water Quality Monitoring Results at I1 - Mid-Ebb Tide

Date	Weather Condition	Sea Condition**	Sampling Time	Depth (m)		Water Temperature (°C)		pH		Salinity ppt		DO Saturation (%)		Dissolved Oxygen (mg/L)			Turbidity(NTU)			Suspended Solids (mg/L)		
						Value	Average	Value	Average	Value	Average	Value	Average	Value	Average	DA*	Value	Average	DA*	Value	Average	DA*
3-Nov-08	Fine	Calm	15:51	Surface	1	27.0 26.6	26.8	8.0 7.7	7.9	31.4 31.4	31.4	88.5 87.7	88.1	6.3 6.4	6.4	6.5	2.7 2.7	2.7	3.1	6.0 6.0	6.0	9.3
				Middle	4.5	26.3 26.3	26.3	8.1 7.7	7.9	31.5 31.5	31.5	87.5 87.7	87.6	6.6 6.6	6.6		3.1 3.1	3.1		12.0 12.0	12.0	
				Bottom	8	25.4 25.4	25.4	8.0 7.9	8.0	31.5 31.5	31.5	88.5 88.4	88.5	6.5 6.4	6.5		3.3 3.4	3.4		10.0 10.0	10.0	
7-Nov-08	Fine	Calm	08:50	Surface	1	26.6 26.6	26.6	7.6 7.7	7.7	28.2 28.1	28.2	86.7 88.1	87.4	6.6 6.7	6.7	6.6	2.4 2.3	2.4	3.0	8.0 8.0	8.0	11.7
				Middle	4.5	26.3 26.3	26.3	8.2 8.1	8.2	28.6 28.6	28.6	84.1 82.1	83.1	6.5 6.3	6.4		2.8 2.9	2.9		12.0 12.0	12.0	
				Bottom	8	25.5 25.5	25.5	7.8 8.0	7.9	29.6 29.6	29.6	74.9 73.8	74.4	6.1 6.1	6.1		3.6 3.7	3.7		15.0 15.0	15.0	
10-Nov-08	Cloudy	Calm	09:42	Surface	1	25.7 25.7	25.7	7.7 7.9	7.8	30.1 30.1	30.1	90.0 90.3	90.2	7.3 7.3	7.3	7.0	1.9 1.8	1.9	2.2	11.0 11.0	11.0	11.8
				Middle	4.5	25.6 25.6	25.6	7.7 7.6	7.7	30.3 30.3	30.3	82.6 81.6	82.1	6.6 6.5	6.6		2.2 2.2	2.2		8.0 9.0	8.5	
				Bottom	8	25.1 25.1	25.1	7.9 7.8	7.9	30.6 30.9	30.8	73.3 72.9	73.1	6.0 5.9	6.0		2.6 2.6	2.6		16.0 16.0	16.0	
12-Nov-08	Fine	Calm	11:46	Surface	1	25.2 25.2	25.2	7.7 7.7	7.7	31.3 31.3	31.3	93.3 91.1	92.2	6.1 6.2	6.2	6.4	2.2 2.2	2.2	2.4	11.0 11.0	11.0	13.3
				Middle	4.5	25.1 25.1	25.1	7.8 7.7	7.8	31.4 31.3	31.4	96.9 96.6	96.8	6.5 6.5	6.5		2.4 2.4	2.4		12.0 12.0	12.0	
				Bottom	8	25.0 25.0	25.0	7.8 7.8	7.8	31.2 31.5	31.4	87.2 87.9	87.6	6.2 6.2	6.2		2.6 2.8	2.7		17.0 17.0	17.0	
14-Nov-08	Sunny	Calm	12:58	Surface	1	25.3 25.4	25.4	8.1 8.2	8.2	31.4 31.4	31.4	92.9 90.8	91.9	6.4 6.3	6.4	6.4	2.3 2.2	2.3	2.7	7.0 7.0	7.0	10.3
				Middle	4.5	25.3 25.3	25.3	8.5 7.8	8.2	31.5 31.5	31.5	90.7 90.9	90.8	6.2 6.3	6.3		2.7 2.7	2.7		10.0 10.0	10.0	
				Bottom	8	25.2 25.2	25.2	8.1 8.3	8.2	31.5 31.7	31.6	87.2 86.9	87.1	6.1 6.1	6.1		2.9 3.0	3.0		14.0 14.0	14.0	
17-Nov-08	Sunny	Calm	15:49	Surface	1	25.3 25.3	25.3	7.6 7.7	7.7	31.4 31.4	31.4	93.0 90.9	92.0	6.1 6.2	6.2	6.4	2.3 2.2	2.3	2.6	11.0 11.0	11.0	10.2
				Middle	4.5	25.2 25.2	25.2	7.6 7.5	7.6	31.4 31.4	31.4	95.5 95.4	95.5	6.6 6.6	6.6		2.6 2.6	2.6		8.0 9.0	8.5	
				Bottom	8	25.1 25.1	25.1	7.6 7.7	7.7	31.3 31.6	31.5	87.1 86.9	87.0	6.2 6.1	6.2		2.7 2.9	2.8		11.0 11.0	11.0	
19-Nov-08	Fine	Calm	17:14	Surface	1	25.3 25.3	25.3	8.2 7.8	8.0	30.5 30.5	30.5	86.9 86.0	86.5	6.4 6.4	6.4	6.4	2.2 2.2	2.2	2.5	14.0 14.0	14.0	12.8
				Middle	4.5	25.3 25.3	25.3	8.0 7.9	8.0	30.6 30.5	30.6	84.7 84.7	84.7	6.3 6.3	6.3		2.6 2.5	2.6		13.0 13.0	13.0	
				Bottom	8	25.3 25.3	25.3	7.8 7.9	7.9	30.1 30.7	30.4	85.3 85.6	85.5	6.3 6.3	6.3		2.6 2.5	2.6		12.0 11.0	11.5	
21-Nov-08	Sunny	Calm	08:18	Surface	1	26.5 26.4	26.5	7.2 7.9	7.6	27.4 27.5	27.5	93.3 98.6	96.0	6.4 6.9	6.7	6.6	2.3 2.3	2.3	2.6	8.0 8.0	8.0	12.7
				Middle	4.5	25.8 25.9	25.9	7.2 7.2	7.2	27.7 27.8	27.8	97.4 94.6	96.0	6.4 6.5	6.5		2.6 2.3	2.5		16.0 16.0	16.0	
				Bottom	8	25.3 25.2	25.3	7.6 7.7	7.7	28.7 29.1	28.9	88.0 92.8	90.4	6.1 6.6	6.4		2.8 3.4	3.1		14.0 14.0	14.0	
24-Nov-08	Sunny	Calm	10:56	Surface	1	25.1 25.1	25.1	7.7 7.9	7.8	31.2 31.2	31.2	95.0 94.8	94.9	6.4 6.4	6.4	6.4	2.5 2.5	2.5	2.8	14.0 14.0	14.0	13.0
				Middle	4.5	25.0 24.9	25.0	7.6 7.6	7.6	31.3 31.2	31.3	89.4 89.0	89.2	6.3 6.3	6.3		2.9 2.9	2.9		11.0 11.0	11.0	
				Bottom	8	24.8 24.8	24.8	7.9 7.9	7.9	31.2 31.4	31.3	87.2 86.8	87.0	6.2 6.1	6.2		3.1 3.1	3.1		14.0 14.0	14.0	
26-Nov-08	Sunny	Calm	12:23	Surface	1	23.7 23.7	23.7	8.1 8.4	8.3	28.9 28.9	28.9	93.3 92.2	92.8	7.1 7.0	7.1	6.8	2.2 2.3	2.3	2.5	8.0 8.0	8.0	8.7
				Middle	4.5	23.3 23.3	23.3	8.2 8.0	8.1	29.7 29.8	29.8	85.3 84.4	84.9	6.5 6.5	6.5		2.5 2.5	2.5		10.0 10.0	10.0	
				Bottom	8	23.1 23.1	23.1	8.3 8.5	8.4	30.2 30.2	30.2	79.2 79.2	79.2	6.1 6.1	6.1		2.7 2.8	2.8		8.0 8.0	8.0	
28-Nov-08	Sunny	Calm	12:47	Surface	1	22.2 22.8	22.5	7.1 7.9	7.5	33.9 33.7	33.8	93.3 91.8	92.6	6.7 6.5	6.6	6.5	2.3 2.2	2.3	2.5	13.0 13.0	13.0	14.8
				Middle	4.5	22.9 22.9	22.9	7.1 7.2	7.2	33.7 33.8	33.8	90.9 90.4	90.7	6.4 6.4	6.4		2.5 2.5	2.5		16.0 16.0	16.0	
				Bottom	8	22.8 22.8	22.8	7.8 7.6	7.7	33.8 33.8	33.8	89.6 89.4	89.5	6.3 6.3	6.3		2.6 2.7	2.7		16.0 15.0	15.5	

Remarks: * DA: Depth-Averaged
 ** Calm: Small or no wave; Moderate: Between calm and rough; Rough : White capped or rougher

Water Quality Monitoring Results at I1 - Mid-Flood Tide

Date	Weather Condition	Sea Condition**	Sampling Time	Depth (m)		Water Temperature (°C)		pH		Salinity ppt		DO Saturation (%)		Dissolved Oxygen (mg/L)			Turbidity(NTU)			Suspended Solids (mg/L)		
						Value	Average	Value	Average	Value	Average	Value	Average	Value	Average	DA*	Value	Average	DA*	Value	Average	DA*
3-Nov-08	Fine	Calm	10:39	Surface	1	27.0 26.9	27.0	7.5 7.6	7.6	31.8 31.8	31.8	89.7 90.0	89.9	6.6 6.6	6.6	6.6	2.6 2.7	2.7	3.1	11.0 11.0	11.0	10.3
				Middle	4.5	26.4 26.4	26.4	7.8 7.8	7.8	32.1 31.9	32.0	89.9 89.9	89.9	6.6 6.6	6.6		3.0 3.1	3.1		10.0 10.0	10.0	
				Bottom	8	26.0 26.0	26.0	7.8 7.9	7.9	32.0 32.0	32.0	88.2 89.5	88.9	6.6 6.7	6.7		3.3 3.4	3.4		10.0 10.0	10.0	
5-Nov-08	Cloudy	Calm	16:44	Surface	1	27.1 27.0	27.1	8.2 8.0	8.1	29.8 31.4	30.6	93.8 93.5	93.7	6.5 6.5	6.5	6.6	2.7 2.7	2.7	3.1	13.0 12.0	12.5	12.2
				Middle	4.5	27.0 27.0	27.0	8.1 8.1	8.1	31.4 31.3	31.4	95.3 95.1	95.2	6.6 6.6	6.6		3.1 3.2	3.2		8.0 8.0	8.0	
				Bottom	8	26.9 26.8	26.9	8.3 8.3	8.3	31.3 31.4	31.4	89.5 89.5	89.5	6.1 6.2	6.2		3.4 3.5	3.5		16.0 16.0	16.0	
7-Nov-08	Fine	Calm	15:19	Surface	1	26.9 26.9	26.9	7.8 8.2	8.0	30.2 30.2	30.2	78.7 78.9	78.8	6.2 6.2	6.2	6.5	2.4 2.4	2.4	3.0	16.0 16.0	16.0	13.7
				Middle	4.5	26.8 26.9	26.9	8.1 7.7	7.9	30.3 30.5	30.4	87.8 85.7	86.8	6.9 6.7	6.8		2.9 3.0	3.0		10.0 10.0	10.0	
				Bottom	8	27.0 27.0	27.0	7.9 8.2	8.1	31.2 31.2	31.2	73.7 74.2	74.0	6.3 6.0	6.2		3.5 3.6	3.6		15.0 15.0	15.0	
10-Nov-08	Fine	Calm	16:29	Surface	1	25.7 25.6	25.7	7.4 7.5	7.5	29.8 31.3	30.6	85.8 88.4	87.1	7.0 7.1	7.1	7.2	2.6 2.6	2.6	3.1	9.0 9.0	9.0	13.3
				Middle	4.5	25.8 25.8	25.8	7.9 7.6	7.8	31.3 31.2	31.3	90.7 89.7	90.2	7.2 7.1	7.2		3.0 3.1	3.1		7.0 8.0	7.5	
				Bottom	8	25.9 25.9	25.9	7.6 8.1	7.9	31.6 31.7	31.7	83.7 84.0	83.9	6.8 6.8	6.8		3.4 3.5	3.5		9.0 9.0	9.0	
12-Nov-08	Fine	Calm	17:18	Surface	1	25.4 25.5	25.5	7.7 7.8	7.8	31.8 31.9	31.9	87.4 88.0	87.7	6.3 6.4	6.4	6.5	2.9 2.9	2.9	2.9	10.0 10.0	10.0	11.8
				Middle	4.5	25.3 25.4	25.4	7.9 7.8	7.9	31.8 31.8	31.8	89.7 90.0	89.9	6.6 6.6	6.6		2.7 2.8	2.8		12.0 12.0	12.0	
				Bottom	8	25.0 25.0	25.0	7.9 8.2	8.1	32.1 31.9	32.0	89.9 88.2	89.1	6.6 6.6	6.6		3.1 3.1	3.1		14.0 13.0	13.5	
14-Nov-08	Fine	Calm	17:49	Surface	1	25.4 25.4	25.4	7.6 7.9	7.8	31.5 31.6	31.6	91.6 93.9	92.8	6.5 6.5	6.5	6.5	2.1 2.2	2.2	2.5	18.0 18.0	18.0	14.0
				Middle	4.5	25.2 25.2	25.2	8.3 8.2	8.3	31.7 31.8	31.8	90.3 90.4	90.4	6.4 6.4	6.4		2.5 2.6	2.6		12.0 12.0	12.0	
				Bottom	8	25.1 25.1	25.1	8.1 8.2	8.2	31.9 31.9	31.9	90.2 92.8	91.5	6.1 6.3	6.2		2.8 2.8	2.8		12.0 12.0	12.0	
17-Nov-08	Sunny	Calm	10:51	Surface	1	25.4 25.4	25.4	7.4 7.4	7.4	31.7 31.7	31.7	89.4 90.9	90.2	6.4 6.5	6.5	6.5	2.5 2.6	2.6	2.7	16.0 16.0	16.0	13.3
				Middle	4.5	25.2 25.3	25.3	8.2 7.9	8.1	31.8 31.8	31.8	90.5 90.2	90.4	6.5 6.5	6.5		2.6 2.7	2.7		14.0 14.0	14.0	
				Bottom	8	25.1 25.1	25.1	7.8 8.0	7.9	32.0 31.9	32.0	90.1 90.0	90.1	6.4 6.5	6.5		2.9 2.9	2.9		10.0 10.0	10.0	
19-Nov-08	Fine	Calm	14:08	Surface	1	25.1 24.9	25.0	7.7 8.0	7.9	28.0 30.8	29.4	96.4 101.5	99.0	7.2 7.4	7.3	7.0	1.9 1.9	1.9	2.2	15.0 16.0	15.5	14.8
				Middle	4.5	25.3 25.3	25.3	8.3 7.9	8.1	30.8 30.5	30.7	91.2 91.5	91.4	6.6 6.6	6.6		2.2 2.3	2.3		11.0 11.0	11.0	
				Bottom	8	25.3 25.3	25.3	8.0 8.3	8.2	30.6 30.7	30.7	91.3 91.0	91.2	6.6 6.6	6.6		2.4 2.4	2.4		18.0 18.0	18.0	
21-Nov-08	Sunny	Calm	14:41	Surface	1	26.4 26.3	26.4	7.0 7.3	7.2	27.6 27.5	27.6	82.3 80.3	81.3	6.4 6.0	6.2	6.4	2.1 2.1	2.1	2.7	13.0 13.0	13.0	14.0
				Middle	4.5	25.7 25.2	25.5	7.9 7.2	7.6	28.3 28.7	28.5	105.0 86.6	95.8	7.1 6.0	6.6		2.5 2.5	2.5		15.0 15.0	15.0	
				Bottom	8	24.9 24.9	24.9	7.3 8.0	7.7	29.2 29.6	29.4	82.7 83.2	83.0	6.1 6.1	6.1		3.0 3.7	3.4		14.0 14.0	14.0	
24-Nov-08	Sunny	Calm	15:49	Surface	1	24.9 24.8	24.9	7.5 7.6	7.6	30.7 31.5	31.1	92.9 95.7	94.3	6.7 6.5	6.6	6.5	2.3 2.4	2.4	2.8	9.0 10.0	9.5	11.5
				Middle	4.5	24.8 24.8	24.8	8.2 7.7	8.0	31.6 31.6	31.6	90.4 90.3	90.4	6.3 6.3	6.3		2.7 2.8	2.8		12.0 12.0	12.0	
				Bottom	8	24.7 24.7	24.7	7.7 8.2	8.0	31.7 31.7	31.7	90.0 90.0	90.0	5.7 6.4	6.1		3.0 3.1	3.1		13.0 13.0	13.0	
26-Nov-08	Sunny	Calm	16:02	Surface	1	23.0 23.0	23.0	7.8 8.1	8.0	31.0 31.0	31.0	76.3 74.9	75.6	6.2 6.1	6.2	6.6	2.4 2.4	2.4	2.5	6.0 7.0	6.5	8.2
				Middle	4.5	23.9 23.9	23.9	8.6 8.1	8.4	29.6 29.6	29.6	94.5 90.6	92.6	7.1 6.9	7.0		2.5 2.3	2.4		12.0 12.0	12.0	
				Bottom	8	23.8 23.8	23.8	8.1 8.5	8.3	29.6 29.6	29.6	82.6 80.8	81.7	6.3 6.2	6.3		2.7 2.8	2.8		6.0 6.0	6.0	
28-Nov-08	Fine	Calm	17:37	Surface	1	22.9 22.9	22.9	7.0 7.4	7.2	33.9 33.9	33.9	88.8 88.8	88.8	6.3 6.3	6.3	6.3	2.4 2.5	2.5	2.4	13.0 13.0	13.0	14.3
				Middle	4.5	22.9 22.9	22.9	7.7 7.1	7.4	33.9 33.9	33.9	88.9 88.8	88.9	6.3 6.3	6.3		2.3 2.2	2.3		12.0 12.0	12.0	
				Bottom	8	22.9 22.8	22.9	7.3 8.0	7.7	33.9 33.9	33.9	88.5 88.4	88.5	6.3 6.3	6.3		2.3 2.5	2.4		18.0 18.0	18.0	

Remarks: * DA: Depth-Averaged
 ** Calm: Small or no wave; Moderate: Between calm and rough; Rough : White capped or rougher

Water Quality Monitoring Results at I2 - Mid-Ebb Tide

Date	Weather Condition	Sea Condition**	Sampling Time	Depth (m)		Water Temperature (°C)		pH		Salinity ppt		DO Saturation (%)		Dissolved Oxygen (mg/L)			Turbidity(NTU)			Suspended Solids (mg/L)		
						Value	Average	Value	Average	Value	Average	Value	Average	Value	Average	DA*	Value	Average	DA*	Value	Average	DA*
3-Nov-08	Fine	Calm	15:45	Surface	1	27.1 27.1	27.1	7.8 7.9	7.9	32.1 32.4	32.3	87.1 89.0	88.1	6.4 6.5	6.5	6.5	2.5 2.5	2.5	2.8	17.0 17.0	17.0	12.3
				Middle	4.5	26.3 26.4	26.4	7.7 7.7	7.7	32.4 31.6	32.0	88.5 87.0	87.8	6.6 6.3	6.5		2.7 2.8	2.8		8.0 8.0	8.0	
				Bottom	8	26.2 26.2	26.2	8.1 7.9	8.0	31.6 31.6	31.6	89.6 89.5	89.6	6.4 6.3	6.4		3.1 3.2	3.2		12.0 12.0	12.0	
7-Nov-08	Fine	Calm	08:42	Surface	1	26.9 26.7	26.8	7.5 7.7	7.6	27.6 27.6	27.6	83.5 84.9	84.2	7.7 7.8	7.8	7.0	1.7 1.8	1.8	2.2	9.0 9.0	9.0	11.7
				Middle	4.5	26.4 26.3	26.4	7.5 7.5	7.5	28.3 28.3	28.3	84.8 83.4	84.1	6.2 6.1	6.2		2.1 2.1	2.1		10.0 10.0	10.0	
				Bottom	8	26.2 26.2	26.2	7.6 7.7	7.7	29.2 29.2	29.2	79.8 78.9	79.4	6.5 6.4	6.5		2.6 2.7	2.7		16.0 16.0	16.0	
10-Nov-08	Cloudy	Calm	09:37	Surface	1	25.7 25.7	25.7	7.9 7.7	7.8	29.9 29.9	29.9	86.1 85.0	85.6	7.3 7.2	7.3	6.8	2.2 2.3	2.3	2.4	9.0 10.0	9.5	13.8
				Middle	4.5	25.5 25.5	25.5	7.8 7.6	7.7	30.3 30.3	30.3	81.5 80.8	81.2	6.2 6.2	6.2		2.3 2.3	2.3		15.0 15.0	15.0	
				Bottom	8	25.5 25.5	25.5	8.0 7.7	7.9	30.7 30.8	30.8	79.3 78.8	79.1	6.4 6.3	6.4		2.4 2.5	2.5		17.0 17.0	17.0	
12-Nov-08	Fine	Calm	11:35	Surface	1	25.1 25.1	25.1	7.6 7.7	7.7	31.5 31.5	31.5	102.0 98.8	100.4	6.7 6.6	6.7	6.6	1.8 1.9	1.9	2.5	15.0 15.0	15.0	12.8
				Middle	4.5	25.0 25.0	25.0	7.7 7.6	7.7	31.5 31.5	31.5	91.5 91.5	91.5	6.4 6.3	6.4		2.5 2.6	2.6		9.0 10.0	9.5	
				Bottom	8	24.9 24.9	24.9	7.7 7.7	7.7	31.6 31.7	31.7	90.6 90.5	90.6	6.3 6.3	6.3		2.8 2.9	2.9		14.0 14.0	14.0	
14-Nov-08	Sunny	Calm	12:51	Surface	1	25.2 25.3	25.3	8.2 8.3	8.3	31.5 31.5	31.5	102.2 98.9	100.6	6.7 6.6	6.7	6.6	1.9 2.0	2.0	2.3	15.0 15.0	15.0	13.8
				Middle	4.5	25.2 25.2	25.2	8.0 7.9	8.0	31.6 31.6	31.6	91.7 91.7	91.7	6.4 6.3	6.4		2.3 2.3	2.3		11.0 11.0	11.0	
				Bottom	8	25.2 25.2	25.2	8.4 8.2	8.3	31.7 31.7	31.7	90.9 90.8	90.9	6.3 6.3	6.3		2.6 2.7	2.7		16.0 15.0	15.5	
17-Nov-08	Sunny	Calm	15:42	Surface	1	25.2 25.2	25.2	7.6 7.7	7.7	31.5 31.5	31.5	102.0 98.8	100.4	6.7 6.7	6.7	6.6	1.8 1.9	1.9	2.4	6.0 6.0	6.0	13.0
				Middle	4.5	25.1 25.1	25.1	8.0 7.9	8.0	31.6 31.6	31.6	91.5 91.5	91.5	6.4 6.3	6.4		2.4 2.4	2.4		16.0 16.0	16.0	
				Bottom	8	25.1 25.0	25.1	7.8 7.9	7.9	31.7 31.7	31.7	90.7 90.6	90.7	6.3 6.3	6.3		2.7 2.8	2.8		17.0 17.0	17.0	
19-Nov-08	Fine	Calm	17:03	Surface	1	25.1 25.2	25.2	8.0 8.0	8.0	30.8 30.7	30.8	102.3 98.7	100.5	7.5 7.2	7.4	7.1	1.6 1.8	1.7	2.0	8.0 8.0	8.0	9.8
				Middle	4.5	25.3 25.3	25.3	7.9 8.1	8.0	30.7 30.7	30.7	91.8 91.8	91.8	6.7 6.7	6.7		2.1 2.1	2.1		15.0 14.0	14.5	
				Bottom	8	25.3 25.3	25.3	7.8 8.2	8.0	30.8 30.8	30.8	92.3 92.3	92.3	6.8 6.8	6.8		2.3 2.3	2.3		7.0 7.0	7.0	
21-Nov-08	Sunny	Calm	08:12	Surface	1	26.7 26.6	26.7	7.9 7.4	7.7	27.2 27.3	27.3	99.7 111.5	105.6	6.3 7.1	6.7	6.7	2.2 2.1	2.2	2.3	16.0 16.0	16.0	12.3
				Middle	4.5	26.2 25.8	26.0	8.0 7.3	7.7	27.7 27.5	27.6	114.2 92.6	103.4	7.3 6.0	6.7		1.9 2.3	2.1		8.0 8.0	8.0	
				Bottom	8	25.2 25.4	25.3	8.1 7.4	7.8	28.5 28.6	28.6	90.7 92.4	91.6	6.3 6.5	6.4		2.6 2.6	2.6		13.0 13.0	13.0	
24-Nov-08	Sunny	Calm	10:46	Surface	1	25.0 25.0	25.0	7.9 7.8	7.9	31.3 31.3	31.3	101.6 98.5	100.1	6.6 6.6	6.6	6.5	2.2 2.2	2.2	2.6	14.0 13.0	13.5	14.0
				Middle	4.5	24.9 24.9	24.9	8.1 7.8	8.0	31.4 31.4	31.4	91.5 91.2	91.4	6.4 6.3	6.4		2.5 2.6	2.6		14.0 14.0	14.0	
				Bottom	8	24.8 24.8	24.8	8.2 7.9	8.1	31.5 31.5	31.5	89.9 89.8	89.9	6.3 6.3	6.3		2.8 2.9	2.9		15.0 14.0	14.5	
26-Nov-08	Sunny	Calm	12:30	Surface	1	23.8 23.8	23.8	8.5 8.4	8.5	29.2 29.2	29.2	98.6 96.9	97.8	7.4 7.3	7.4	7.0	2.3 2.2	2.3	2.5	12.0 12.0	12.0	12.8
				Middle	4.5	23.6 23.6	23.6	8.4 8.0	8.2	29.9 29.9	29.9	88.3 84.7	86.5	6.7 6.5	6.6		2.6 2.4	2.5		11.0 11.0	11.0	
				Bottom	8	23.3 23.3	23.3	8.6 8.2	8.4	30.4 30.4	30.4	79.0 77.8	78.4	6.1 6.0	6.1		2.7 2.7	2.7		16.0 15.0	15.5	
28-Nov-08	Sunny	Calm	12:41	Surface	1	22.9 22.9	22.9	7.9 7.5	7.7	33.6 33.6	33.6	97.6 96.7	97.2	6.9 6.9	6.9	6.9	2.2 2.3	2.3	2.7	12.0 12.0	12.0	12.0
				Middle	4.5	22.9 22.8	22.9	7.8 7.3	7.6	33.7 33.7	33.7	95.6 95.0	95.3	6.8 6.7	6.8		2.8 2.8	2.8		15.0 15.0	15.0	
				Bottom	8	22.8 22.8	22.8	8.1 7.5	7.8	33.8 33.8	33.8	93.2 93.1	93.2	6.6 6.6	6.6		3.0 3.0	3.0		9.0 9.0	9.0	

Remarks: * DA: Depth-Averaged
 ** Calm: Small or no wave; Moderate: Between calm and rough; Rough : White capped or rougher

Water Quality Monitoring Results at I2 - Mid-Flood Tide

Date	Weather Condition	Sea Condition**	Sampling Time	Depth (m)		Water Temperature (°C)		pH		Salinity ppt		DO Saturation (%)		Dissolved Oxygen (mg/L)			Turbidity (NTU)			Suspended Solids (mg/L)		
						Value	Average	Value	Average	Value	Average	Value	Average	Value	Average	DA*	Value	Average	DA*	Value	Average	DA*
3-Nov-08	Fine	Calm	10:33	Surface	1	27.2 27.3	27.3	7.5 7.5	7.5	32.2 32.2	32.2	87.5 90.4	89.0	6.4 6.8	6.6	6.7	2.8 3.0	2.9	3.0	11.0 11.0	11.0	12.0
				Middle	4.5	27.0 27.1	27.1	7.3 7.5	7.4	32.2 32.2	32.2	89.4 89.4	89.4	6.8 6.6	6.7		3.0 2.9	3.0		10.0 10.0	10.0	
				Bottom	8	26.2 26.2	26.2	7.4 7.5	7.5	31.8 31.9	31.9	87.4 88.0	87.7	6.3 6.4	6.4		3.2 3.2	3.2		15.0 15.0	15.0	
5-Nov-08	Cloudy	Calm	16:37	Surface	1	27.3 27.3	27.3	8.0 7.9	8.0	31.3 31.3	31.3	99.0 96.7	97.9	6.6 6.5	6.6	6.5	2.8 3.0	2.9	3.1	18.0 18.0	18.0	13.2
				Middle	4.5	27.1 27.1	27.1	8.5 7.8	8.2	31.4 31.4	31.4	92.3 90.8	91.6	6.3 6.2	6.3		3.1 3.0	3.1		12.0 12.0	12.0	
				Bottom	8	27.0 27.0	27.0	8.3 7.9	8.1	31.3 31.2	31.3	90.0 89.5	89.8	6.2 6.2	6.2		3.3 3.4	3.4		9.0 10.0	9.5	
7-Nov-08	Fine	Calm	15:08	Surface	1	26.9 26.9	26.9	8.3 8.0	8.2	29.5 30.4	30.0	83.4 79.7	81.6	6.3 6.2	6.3	6.8	2.2 2.3	2.3	2.5	13.0 13.0	13.0	14.7
				Middle	4.5	26.6 26.6	26.6	8.2 7.8	8.0	30.0 30.1	30.1	75.1 74.4	74.8	7.2 7.2	7.2		2.4 2.4	2.4		14.0 14.0	14.0	
				Bottom	8	27.0 27.1	27.1	8.2 8.1	8.2	29.8 29.8	29.8	63.3 62.8	63.1	6.1 6.2	6.2		2.8 2.9	2.9		17.0 17.0	17.0	
10-Nov-08	Fine	Calm	16:15	Surface	1	25.8 25.8	25.8	7.4 7.4	7.4	30.8 31.3	31.1	92.2 88.3	90.3	6.7 7.1	6.9	7.2	2.2 2.3	2.3	2.7	11.0 11.0	11.0	12.8
				Middle	4.5	25.7 25.7	25.7	7.2 7.5	7.4	31.1 31.1	31.1	83.2 82.9	83.1	7.4 7.4	7.4		2.6 2.6	2.6		8.0 8.0	8.0	
				Bottom	8	25.9 25.9	25.9	7.3 7.4	7.4	31.0 31.0	31.0	81.4 81.1	81.3	7.2 7.2	7.2		3.0 3.1	3.1		7.0 7.0	7.0	
12-Nov-08	Fine	Calm	17:07	Surface	1	25.5 25.5	25.5	7.8 7.7	7.8	31.3 31.4	31.4	89.3 88.4	88.9	6.4 6.5	6.5	6.5	2.7 2.7	2.7	3.0	12.0 12.0	12.0	11.0
				Middle	4.5	25.5 25.5	25.5	7.7 7.6	7.7	31.3 31.4	31.4	88.4 87.8	88.1	6.4 6.3	6.4		2.9 2.9	2.9		10.0 10.0	10.0	
				Bottom	8	25.3 25.2	25.3	7.8 7.7	7.8	31.5 31.6	31.6	88.1 87.0	87.6	6.3 6.3	6.3		3.2 3.4	3.3		11.0 11.0	11.0	
14-Nov-08	Fine	Calm	17:41	Surface	1	25.3 25.3	25.3	7.7 7.8	7.8	31.2 31.3	31.3	95.3 93.3	94.3	6.6 6.6	6.6	6.5	2.5 2.6	2.6	2.6	14.0 14.0	14.0	15.0
				Middle	4.5	25.2 25.2	25.2	7.6 7.7	7.7	31.4 31.5	31.5	90.8 90.1	90.5	6.4 6.4	6.4		2.4 2.4	2.4		16.0 16.0	16.0	
				Bottom	8	25.1 25.1	25.1	7.7 7.8	7.8	31.7 31.7	31.7	87.1 89.5	88.3	6.3 6.4	6.4		2.6 2.7	2.7		15.0 15.0	15.0	
17-Nov-08	Sunny	Calm	10:43	Surface	1	25.4 25.4	25.4	8.0 7.8	7.9	31.3 31.4	31.4	92.3 90.8	91.6	6.5 6.6	6.6	6.5	2.4 2.5	2.5	2.7	14.0 14.0	14.0	11.2
				Middle	4.5	25.3 25.3	25.3	7.9 7.7	7.8	31.4 31.5	31.5	89.6 88.9	89.3	6.4 6.3	6.4		2.7 2.7	2.7		11.0 10.0	10.5	
				Bottom	8	25.2 25.2	25.2	8.0 7.9	8.0	31.6 31.7	31.7	89.1 88.2	88.7	6.3 6.4	6.4		2.9 3.0	3.0		9.0 9.0	9.0	
19-Nov-08	Fine	Calm	13:49	Surface	1	25.2 25.3	25.3	7.7 7.9	7.8	30.7 30.6	30.7	102.6 98.5	100.6	7.5 7.2	7.4	7.1	2.4 2.3	2.4	2.2	11.0 11.0	11.0	10.3
				Middle	4.5	25.3 25.3	25.3	7.6 7.8	7.7	30.7 30.7	30.7	92.9 92.9	92.9	6.8 6.8	6.8		1.9 1.9	1.9		9.0 9.0	9.0	
				Bottom	8	25.3 25.3	25.3	7.6 7.8	7.7	30.7 30.7	30.7	93.0 93.0	93.0	6.8 6.8	6.8		2.2 2.3	2.3		11.0 11.0	11.0	
21-Nov-08	Sunny	Calm	14:35	Surface	1	26.7 26.6	26.7	7.3 7.4	7.4	27.2 27.2	27.2	87.6 105.9	96.8	6.0 6.9	6.5	6.4	2.5 2.1	2.3	2.5	16.0 16.0	16.0	12.5
				Middle	4.5	25.6 25.7	25.7	7.1 7.5	7.3	28.1 27.9	28.0	94.1 89.1	91.6	6.3 6.2	6.3		2.4 2.4	2.4		13.0 13.0	13.0	
				Bottom	8	25.2 25.1	25.2	7.1 7.3	7.2	29.1 29.1	29.1	81.5 82.0	81.8	6.0 6.1	6.1		2.8 3.0	2.9		8.0 9.0	8.5	
24-Nov-08	Sunny	Calm	15:37	Surface	1	24.9 24.9	24.9	7.8 7.7	7.8	31.3 31.4	31.4	97.5 95.2	96.4	6.7 6.6	6.7	6.6	2.7 2.8	2.8	2.9	12.0 12.0	12.0	14.3
				Middle	4.5	24.8 24.8	24.8	7.6 7.7	7.7	31.5 31.5	31.5	91.7 90.7	91.2	6.4 6.4	6.4		2.8 2.9	2.9		19.0 19.0	19.0	
				Bottom	8	24.7 24.8	24.8	7.7 7.7	7.7	31.6 31.7	31.7	90.4 90.0	90.2	6.4 6.4	6.4		3.0 3.0	3.0		12.0 12.0	12.0	
26-Nov-08	Sunny	Calm	16:17	Surface	1	23.6 23.5	23.6	7.9 7.9	7.9	30.1 30.2	30.2	77.8 77.6	77.7	6.1 6.1	6.1	6.5	2.3 2.4	2.4	2.6	15.0 14.0	14.5	12.8
				Middle	4.5	24.1 24.1	24.1	7.8 8.0	7.9	28.6 28.7	28.7	91.6 90.0	90.8	6.9 6.8	6.9		2.5 2.6	2.6		12.0 12.0	12.0	
				Bottom	8	23.6 23.6	23.6	7.9 7.9	7.9	30.0 30.0	30.0	80.6 78.1	79.4	6.2 6.0	6.1		2.7 2.6	2.7		12.0 12.0	12.0	
28-Nov-08	Fine	Calm	17:31	Surface	1	22.8 22.9	22.9	7.2 7.4	7.3	33.9 33.9	33.9	92.6 92.9	92.8	6.6 6.6	6.6	6.6	3.3 2.8	3.1	3.2	13.0 13.0	13.0	14.7
				Middle	4.5	22.9 22.9	22.9	7.1 7.3	7.2	33.9 33.9	33.9	93.0 92.9	93.0	6.6 6.6	6.6		2.9 3.0	3.0		12.0 12.0	12.0	
				Bottom	8	22.8 22.8	22.8	7.0 7.2	7.1	33.9 33.9	33.9	92.5 92.2	92.4	6.6 6.5	6.6		3.3 3.5	3.4		19.0 19.0	19.0	

Remarks: * DA: Depth-Averaged

** Calm: Small or no wave; Moderate: Between calm and rough; Rough : White capped or rougher

Water Quality Monitoring Results at Intake A - Mid-Ebb Tide

Date	Weather Condition	Sea Condition**	Sampling Time	Depth (m)		Water Temperature (°C)		pH		Salinity ppt		DO Saturation (%)		Dissolved Oxygen (mg/L)			Turbidity(NTU)			Suspended Solids (mg/L)		
						Value	Average	Value	Average	Value	Average	Value	Average	Value	Average	Value	Average	DA*	Value	Average	DA*	Value
3-Nov-08	Fine	Calm	15:29	Surface	1	26.8 26.6	26.7	7.9 7.5	7.7	31.6 31.3	31.5	92.0 91.8	91.9	6.6 6.6	6.6	6.5	2.4 2.5	2.5	2.8	13.0 13.0	13.0	12.3
				Middle	5	26.2 26.2	26.2	8.3 8.3	8.3	31.1 31.3	31.2	89.3 85.9	87.6	6.3 6.5	6.4		2.7 2.7	2.7		10.0 10.0	10.0	
				Bottom	9	25.4 25.4	25.4	7.5 8.0	7.8	31.4 32.0	31.7	85.7 86.7	86.2	6.5 6.4	6.5		3.2 3.2	3.2		14.0 14.0	14.0	
7-Nov-08	Fine	Calm	08:28	Surface	1	26.3 26.3	26.3	8.0 7.7	7.9	27.3 27.3	27.3	84.4 85.1	84.8	7.2 7.2	7.2	6.7	1.3 1.4	1.4	1.9	7.0 7.0	7.0	12.0
				Middle	5	26.0 25.9	26.0	7.7 8.2	8.0	28.2 28.1	28.2	86.4 83.4	84.9	6.3 6.1	6.2		1.7 1.8	1.8		13.0 13.0	13.0	
				Bottom	9	25.6 25.6	25.6	8.3 8.2	8.3	29.0 29.0	29.0	77.9 77.4	77.7	6.1 6.1	6.1		2.3 2.4	2.4		16.0 16.0	16.0	
10-Nov-08	Cloudy	Calm	09:19	Surface	1	25.2 25.4	25.3	8.0 7.3	7.7	30.0 29.8	29.9	87.5 85.2	86.4	7.1 7.0	7.1	6.7	2.3 2.3	2.3	2.5	13.0 12.0	12.5	13.8
				Middle	5	25.4 25.4	25.4	8.1 8.3	8.2	30.2 30.2	30.2	83.3 81.5	82.4	6.3 6.2	6.3		2.4 2.5	2.5		15.0 15.0	15.0	
				Bottom	9	25.2 25.2	25.2	7.4 7.7	7.6	30.6 30.6	30.6	82.6 82.4	82.5	6.6 6.6	6.6		2.6 2.6	2.6		14.0 14.0	14.0	
12-Nov-08	Fine	Calm	11:21	Surface	1	25.9 25.9	25.9	7.9 7.6	7.8	31.8 31.6	31.7	109.3 104.7	107.0	6.9 6.7	6.8	6.6	2.2 2.2	2.2	2.4	13.0 13.0	13.0	12.7
				Middle	5	25.3 25.1	25.2	7.8 8.0	7.9	31.5 31.6	31.6	99.1 98.5	98.8	6.4 6.4	6.4		2.4 2.3	2.4		11.0 11.0	11.0	
				Bottom	9	25.0 24.9	25.0	7.8 8.0	7.9	31.6 31.6	31.6	97.9 97.3	97.6	6.4 6.4	6.4		2.5 2.5	2.5		14.0 14.0	14.0	
14-Nov-08	Sunny	Calm	12:33	Surface	1	25.5 25.3	25.4	7.7 7.9	7.8	31.9 31.6	31.8	109.0 104.3	106.7	6.9 6.7	6.8	6.6	1.7 1.9	1.8	2.2	11.0 11.0	11.0	12.3
				Middle	5	25.2 25.2	25.2	8.7 8.5	8.6	31.6 31.6	31.6	98.7 98.1	98.4	6.4 6.4	6.4		2.2 2.2	2.2		14.0 14.0	14.0	
				Bottom	9	25.2 25.2	25.2	7.7 8.1	7.9	31.6 31.6	31.6	97.6 97.0	97.3	6.4 6.3	6.4		2.5 2.5	2.5		12.0 12.0	12.0	
17-Nov-08	Sunny	Calm	15:29	Surface	1	25.2 25.2	25.2	7.7 8.0	7.9	31.8 31.6	31.7	109.1 104.4	106.8	6.9 6.6	6.8	6.6	1.9 2.0	2.0	2.3	14.0 15.0	14.5	10.2
				Middle	5	25.0 25.0	25.0	7.9 8.0	8.0	31.6 31.6	31.6	98.9 98.3	98.6	6.4 6.4	6.4		2.3 2.3	2.3		8.0 8.0	8.0	
				Bottom	9	25.0 25.0	25.0	7.9 8.1	8.0	31.6 31.6	31.6	97.7 97.1	97.4	6.4 6.4	6.4		2.5 2.5	2.5		8.0 8.0	8.0	
19-Nov-08	Fine	Calm	16:50	Surface	1	24.6 25.1	24.9	7.9 8.1	8.0	31.1 30.8	31.0	104.2 98.8	101.5	7.6 7.2	7.4	7.2	1.6 1.5	1.6	1.9	11.0 11.0	11.0	13.0
				Middle	5	25.3 25.3	25.3	7.7 8.3	8.0	30.7 30.7	30.7	93.7 93.2	93.5	6.9 6.8	6.9		2.0 1.9	2.0		17.0 17.0	17.0	
				Bottom	9	25.3 25.3	25.3	8.3 7.8	8.1	30.8 30.7	30.8	92.9 92.9	92.9	6.8 6.8	6.8		2.0 1.9	2.0		11.0 11.0	11.0	
21-Nov-08	Sunny	Calm	08:02	Surface	1	26.7 27.0	26.9	8.2 7.0	7.6	27.5 27.2	27.4	112.2 111.3	111.8	7.9 7.9	7.9	7.3	1.9 2.2	2.1	2.5	8.0 8.0	8.0	14.3
				Middle	5	25.9 25.7	25.8	7.9 8.1	8.0	27.6 27.8	27.7	104.0 84.6	94.3	7.3 6.1	6.7		2.1 2.4	2.3		16.0 16.0	16.0	
				Bottom	9	25.2 24.9	25.1	7.4 7.3	7.4	29.3 29.4	29.4	83.9 79.9	81.9	6.4 6.0	6.2		3.1 3.1	3.1		19.0 19.0	19.0	
24-Nov-08	Sunny	Calm	10:32	Surface	1	25.1 25.0	25.1	8.1 7.6	7.9	31.6 31.5	31.6	110.0 105.5	107.8	6.8 6.6	6.7	6.6	2.2 2.3	2.3	2.6	12.0 12.0	12.0	14.8
				Middle	5	24.8 24.8	24.8	8.2 8.3	8.3	31.5 31.4	31.5	99.9 99.3	99.6	6.3 6.4	6.4		2.5 2.5	2.5		19.0 18.0	18.5	
				Bottom	9	24.8 24.8	24.8	7.7 7.9	7.8	31.4 31.4	31.4	98.5 97.9	98.2	6.4 6.4	6.4		2.9 3.0	3.0		14.0 14.0	14.0	
26-Nov-08	Sunny	Calm	12:45	Surface	1	23.6 23.6	23.6	8.4 7.9	8.2	30.2 30.1	30.2	92.2 89.3	90.8	7.0 6.8	6.9	6.6	1.1 1.0	1.1	1.5	15.0 15.0	15.0	14.3
				Middle	5	23.4 23.5	23.5	8.7 8.7	8.7	30.3 30.3	30.3	81.6 81.6	81.6	6.3 6.3	6.3		1.3 1.4	1.4		15.0 15.0	15.0	
				Bottom	9	23.0 23.0	23.0	7.9 8.1	8.0	31.0 31.0	31.0	77.6 76.8	77.2	6.2 6.1	6.2		1.8 1.9	1.9		13.0 13.0	13.0	
28-Nov-08	Sunny	Calm	12:31	Surface	1	22.9 22.9	22.9	8.1 7.2	7.7	33.2 33.4	33.3	101.1 99.6	100.4	7.2 7.1	7.2	7.1	2.0 1.9	2.0	2.0	8.0 8.0	8.0	9.5
				Middle	5	22.9 22.9	22.9	7.8 8.2	8.0	33.5 33.6	33.6	98.1 97.9	98.0	7.0 6.9	7.0		1.9 1.9	1.9		8.0 9.0	8.5	
				Bottom	9	22.8 22.8	22.8	7.3 7.2	7.3	33.7 33.7	33.7	97.1 96.6	96.9	6.9 6.8	6.9		2.0 2.2	2.1		12.0 12.0	12.0	

Remarks: * DA: Depth-Averaged
 ** Calm: Small or no wave; Moderate: Between calm and rough; Rough : White capped or rougher

Water Quality Monitoring Results at Intake A - Mid-Flood Tide

Date	Weather Condition	Sea Condition**	Sampling Time	Depth (m)		Water Temperature (°C)		pH		Salinity ppt		DO Saturation (%)		Dissolved Oxygen (mg/L)			Turbidity(NTU)			Suspended Solids (mg/L)		
						Value	Average	Value	Average	Value	Average	Value	Average	Value	Average	DA*	Value	Average	DA*	Value	Average	DA*
3-Nov-08	Fine	Calm	10:19	Surface	1	27.0 27.0	27.0	7.7 7.5	7.6	32.2 33.0	32.6	90.4 90.1	90.3	6.6 6.6	6.6	6.5	2.7 2.8	2.8	3.1	9.0 9.0	9.0	9.8
				Middle	5	26.2 26.3	26.3	7.8 7.7	7.8	33.5 32.7	33.1	88.1 87.1	87.6	6.4 6.3	6.4		3.0 3.1	3.1		13.0 12.0	12.5	
				Bottom	9	26.3 26.3	26.3	7.8 8.1	8.0	31.9 31.7	31.8	89.8 90.0	89.9	6.5 6.6	6.6		3.2 3.4	3.3		8.0 8.0	8.0	
5-Nov-08	Cloudy	Calm	16:24	Surface	1	27.4 27.5	27.5	8.1 8.1	8.0	31.5 31.5	31.5	99.9 97.2	98.6	6.5 6.6	6.6	6.5	2.8 2.9	2.9	3.2	10.0 10.0	10.0	13.5
				Middle	5	27.3 27.4	27.4	8.1 8.1	8.1	31.2 31.2	31.2	96.4 96.5	96.5	6.4 6.4	6.4		3.1 3.2	3.2		14.0 14.0	14.0	
				Bottom	9	27.3 27.3	27.3	8.0 8.0	8.0	31.2 31.1	31.2	94.3 93.3	93.8	6.2 6.2	6.2		3.4 3.5	3.5		17.0 16.0	16.5	
7-Nov-08	Fine	Calm	14:50	Surface	1	27.3 27.3	27.3	7.4 7.4	7.4	29.6 29.8	29.7	88.9 84.3	86.6	6.8 6.4	6.6	6.6	1.7 1.7	1.7	2.2	13.0 13.0	13.0	14.7
				Middle	5	27.0 27.0	27.0	8.3 8.0	8.2	29.9 30.1	30.0	82.6 87.2	84.9	6.3 6.6	6.5		2.3 2.3	2.3		12.0 12.0	12.0	
				Bottom	9	26.3 26.3	26.3	7.8 8.0	7.9	30.7 30.7	30.7	79.0 77.6	78.3	6.1 6.0	6.1		2.5 2.6	2.6		19.0 19.0	19.0	
10-Nov-08	Fine	Calm	16:02	Surface	1	26.0 26.0	26.0	7.5 7.5	7.5	30.9 31.0	31.0	87.0 85.4	86.2	6.9 6.7	6.8	6.8	2.4 2.4	2.4	2.7	6.0 6.0	6.0	12.7
				Middle	5	25.9 25.9	25.9	7.7 7.6	7.7	31.1 31.2	31.2	82.8 85.1	84.0	6.6 6.7	6.7		2.6 2.7	2.7		9.0 9.0	9.0	
				Bottom	9	25.5 25.5	25.5	7.9 8.2	8.1	31.5 31.5	31.5	80.6 79.7	80.2	6.4 6.4	6.4		3.0 3.0	3.0		4.0 4.0	4.0	
12-Nov-08	Fine	Calm	16:46	Surface	1	25.7 25.7	25.7	7.4 7.5	7.5	31.5 31.5	31.5	87.5 87.7	87.6	6.6 6.6	6.6	6.6	1.9 2.0	2.0	2.1	9.0 10.0	9.5	11.8
				Middle	5.5	25.5 25.5	25.5	8.1 7.9	8.0	31.5 31.5	31.5	88.5 88.4	88.5	6.5 6.4	6.5		2.0 2.1	2.1		12.0 12.0	12.0	
				Bottom	10	25.3 25.3	25.3	7.7 8.0	7.9	32.0 32.1	32.1	87.2 85.3	86.3	6.4 6.3	6.4		2.2 2.3	2.3		14.0 14.0	14.0	
14-Nov-08	Fine	Calm	17:25	Surface	1	25.4 25.4	25.4	8.1 7.8	8.0	31.6 31.6	31.6	92.1 92.7	92.4	6.4 6.5	6.5	6.5	2.3 2.5	2.4	2.7	12.0 11.0	11.5	13.2
				Middle	5.5	25.3 25.3	25.3	8.0 8.2	8.1	31.7 31.7	31.7	91.2 91.0	91.1	6.4 6.3	6.4		2.6 2.7	2.7		13.0 13.0	13.0	
				Bottom	10	25.3 25.3	25.3	8.3 8.6	8.5	32.0 32.0	32.0	89.8 88.5	89.2	6.2 6.2	6.2		2.9 2.9	2.9		15.0 15.0	15.0	
17-Nov-08	Sunny	Calm	10:25	Surface	1	25.5 25.5	25.5	7.8 8.0	7.9	31.6 31.6	31.6	89.8 90.1	90.0	6.5 6.6	6.6	6.5	2.1 2.3	2.2	2.4	7.0 7.0	7.0	10.2
				Middle	5.5	25.4 25.4	25.4	8.0 7.7	7.9	31.6 31.6	31.6	89.8 89.6	89.7	6.4 6.3	6.4		2.3 2.4	2.4		11.0 11.0	11.0	
				Bottom	10	25.3 25.3	25.3	7.9 8.2	8.1	32.0 32.1	32.1	88.4 86.8	87.6	6.3 6.3	6.3		2.5 2.6	2.6		13.0 12.0	12.5	
19-Nov-08	Fine	Calm	13:32	Surface	1	25.2 25.2	25.2	8.0 7.9	8.0	30.7 30.7	30.7	91.7 93.0	92.4	6.7 6.8	6.8	6.7	2.4 2.4	2.4	2.4	11.0 11.0	11.0	10.5
				Middle	5	25.3 25.3	25.3	8.1 8.1	8.1	30.8 30.8	30.8	89.6 89.6	89.6	6.6 6.6	6.6		2.4 2.4	2.4		10.0 10.0	10.0	
				Bottom	9	25.3 25.3	25.3	8.3 8.5	8.4	30.8 30.8	30.8	88.7 88.3	88.5	6.5 6.5	6.5		2.5 2.5	2.5		10.0 11.0	10.5	
21-Nov-08	Sunny	Calm	14:27	Surface	1	26.1 25.9	26.0	7.4 7.3	7.4	27.4 27.5	27.5	99.9 102.1	101.0	6.7 7.0	6.9	6.7	2.0 2.4	2.2	2.6	8.0 8.0	8.0	14.0
				Middle	5	25.5 25.4	25.5	7.4 7.4	7.4	28.4 28.6	28.5	98.3 88.8	93.6	6.8 6.2	6.5		2.6 2.6	2.6		16.0 16.0	16.0	
				Bottom	9	25.2 24.7	25.0	7.8 7.8	7.8	29.3 29.6	29.5	85.0 79.9	82.5	6.4 6.0	6.2		3.0 3.2	3.1		18.0 18.0	18.0	
24-Nov-08	Sunny	Calm	15:24	Surface	1	25.0 25.1	25.1	7.7 7.9	7.8	31.6 31.6	31.6	95.5 96.1	95.8	6.6 6.5	6.6	6.5	2.5 2.6	2.6	2.9	11.0 11.0	11.0	12.2
				Middle	5	25.0 25.0	25.0	7.9 7.8	7.9	31.6 31.6	31.6	93.4 92.9	93.2	6.4 6.3	6.4		2.8 2.9	2.9		12.0 12.0	12.0	
				Bottom	9	24.9 24.9	24.9	8.0 8.3	8.2	31.8 31.8	31.8	91.7 90.6	91.2	6.2 6.2	6.2		3.1 3.1	3.1		14.0 13.0	13.5	
26-Nov-08	Sunny	Calm	16:26	Surface	1	23.3 23.2	23.3	8.2 8.1	8.2	30.5 30.8	30.7	74.5 74.4	74.5	5.9 5.9	5.9	6.8	1.7 1.9	1.8	1.8	15.0 15.0	15.0	12.3
				Middle	5	24.0 23.9	24.0	8.2 8.2	8.2	28.5 28.5	28.5	102.5 98.7	100.6	7.7 7.4	7.6		1.4 1.4	1.4		12.0 12.0	12.0	
				Bottom	9	23.3 23.2	23.3	8.5 8.7	8.6	29.9 30.0	30.0	82.9 81.1	82.0	6.4 6.2	6.3		2.1 2.1	2.1		10.0 10.0	10.0	
28-Nov-08	Fine	Calm	17:23	Surface	1	22.9 22.9	22.9	7.2 7.4	7.3	33.8 33.8	33.8	96.1 96.2	96.2	6.8 6.8	6.8	6.8	2.1 2.1	2.1	2.2	10.0 10.0	10.0	12.3
				Middle	5	22.8 22.8	22.8	7.5 7.4	7.5	33.8 33.8	33.8	95.3 95.2	95.3	6.8 6.7	6.8		2.2 2.3	2.3		10.0 10.0	10.0	
				Bottom	9	22.8 22.8	22.8	7.7 8.0	7.9	33.8 33.8	33.8	94.5 94.4	94.5	6.7 6.7	6.7		2.3 2.2	2.3		17.0 17.0	17.0	

Remarks: * DA: Depth-Averaged
 ** Calm: Small or no wave; Moderate: Between calm and rough; Rough : White capped or rougher

Water Quality Monitoring Results at Intake B - Mid-Ebb Tide

Date	Weather Condition	Sea Condition**	Sampling Time	Depth (m)		Water Temperature (°C)		pH		Salinity ppt		DO Saturation (%)		Dissolved Oxygen (mg/L)			Turbidity(NTU)			Suspended Solids (mg/L)		
						Value	Average	Value	Average	Value	Average	Value	Average	Value	Average	DA*	Value	Average	DA*	Value	Average	DA*
3-Nov-08	Fine	Calm	16:07	Surface	1	26.8 26.7	26.8	8.2 7.8	8.0	32.0 32.1	32.1	87.2 85.3	86.3	6.4 6.3	6.4	6.5	2.9 3.3	3.1	3.6	14.0 14.0	14.0	13.3
				Middle	6	26.2 26.1	26.2	8.2 8.2	8.0	31.3 31.4	31.4	89.3 88.4	88.9	6.4 6.5	6.5		3.5 3.7	3.6		15.0 15.0	15.0	
				Bottom	11	25.8 25.8	25.8	7.6 7.8	7.7	31.3 31.4	31.4	88.4 87.8	88.1	6.4 6.3	6.4		4.1 4.2	4.2		11.0 11.0	11.0	
7-Nov-08	Fine	Calm	09:05	Surface	1	26.6 26.6	26.6	7.8 7.8	7.8	29.0 29.1	29.1	91.0 90.5	90.8	6.8 6.8	6.8	6.5	2.7 2.5	2.6	3.0	6.0 6.0	6.0	11.2
				Middle	6	26.1 26.1	26.1	7.6 8.2	7.9	29.4 29.7	29.6	81.6 76.4	79.0	6.2 5.9	6.1		2.9 2.9	2.9		15.0 15.0	15.0	
				Bottom	11	25.8 25.8	25.8	8.2 8.2	8.2	30.5 29.7	30.1	75.0 82.6	78.8	5.9 6.4	6.2		3.4 3.3	3.4		13.0 12.0	12.5	
10-Nov-08	Cloudy	Calm	09:57	Surface	1	25.5 25.6	25.6	7.6 7.5	7.6	30.6 30.6	30.6	99.0 95.6	97.3	7.7 7.5	7.6	7.1	2.1 2.2	2.2	2.5	13.0 13.0	13.0	12.8
				Middle	6	25.4 25.4	25.4	7.9 7.6	7.8	30.9 31.0	31.0	84.4 81.7	83.1	6.7 6.5	6.6		2.4 2.4	2.4		13.0 13.0	13.0	
				Bottom	11	25.3 25.3	25.3	7.7 7.9	7.8	31.4 31.0	31.2	78.8 82.6	80.7	6.3 6.6	6.5		2.9 3.1	3.0		12.0 13.0	12.5	
12-Nov-08	Fine	Calm	12:04	Surface	1	24.8 24.9	24.9	7.7 7.7	7.7	31.5 31.4	31.5	110.4 104.3	107.4	6.9 6.7	6.8	6.6	2.5 2.5	2.5	2.7	17.0 16.0	16.5	12.2
				Middle	5.5	24.8 24.8	24.8	7.6 7.7	7.7	31.7 31.7	31.7	90.7 90.2	90.5	6.3 6.3	6.3		2.5 2.6	2.6		12.0 12.0	12.0	
				Bottom	10	24.7 25.1	24.9	7.8 8.0	7.9	31.8 31.8	31.8	88.1 87.8	88.0	6.2 6.2	6.2		3.0 3.1	3.1		8.0 8.0	8.0	
14-Nov-08	Sunny	Calm	13:08	Surface	1	25.0 25.1	25.1	8.3 8.0	8.2	31.4 31.5	31.5	110.6 104.3	107.5	7.0 6.7	6.9	6.6	2.5 3.0	2.8	3.1	11.0 10.0	10.5	11.8
				Middle	6	25.0 25.0	25.0	8.3 8.2	8.3	31.7 31.7	31.7	90.9 90.4	90.7	6.2 6.3	6.3		3.0 3.1	3.1		14.0 14.0	14.0	
				Bottom	11	25.0 25.0	25.0	7.9 8.4	8.2	31.8 31.8	31.8	88.3 88.1	88.2	6.2 6.2	6.2		3.4 3.5	3.5		11.0 11.0	11.0	
17-Nov-08	Sunny	Calm	16:07	Surface	1	24.9 25.0	25.0	7.9 7.6	7.8	31.4 31.4	31.4	110.4 104.2	107.3	7.0 6.7	6.9	6.6	2.5 2.7	2.6	2.9	16.0 16.0	16.0	12.5
				Middle	5.5	24.9 24.9	24.9	7.8 8.1	8.0	31.7 31.7	31.7	90.7 90.2	90.5	6.2 6.3	6.3		2.7 2.8	2.8		7.0 7.0	7.0	
				Bottom	10	24.9 25.0	25.0	8.0 8.1	8.1	31.8 31.8	31.8	88.2 87.9	88.1	6.2 6.2	6.2		3.2 3.3	3.3		14.0 15.0	14.5	
19-Nov-08	Fine	Calm	17:33	Surface	1	24.9 25.0	25.0	7.9 7.8	7.9	30.7 30.6	30.7	110.5 104.3	107.4	8.0 7.6	7.8	7.3	2.8 2.7	2.8	3.1	10.0 10.0	10.0	13.7
				Middle	1	25.3 25.3	25.3	7.9 8.0	8.0	30.8 30.8	30.8	90.7 90.5	90.6	6.7 6.6	6.7		2.9 3.0	3.0		15.0 15.0	15.0	
				Bottom	1	25.3 25.3	25.3	7.7 7.9	7.8	30.8 30.8	30.8	89.2 89.1	89.2	6.6 6.6	6.6		3.4 3.4	3.4		16.0 16.0	16.0	
21-Nov-08	Sunny	Calm	08:25	Surface	1	25.9 26.0	26.0	6.9 7.3	7.1	28.1 28.1	28.1	100.7 97.1	98.9	7.0 6.6	6.8	6.7	2.8 3.0	2.9	3.6	22.0 22.0	22.0	14.8
				Middle	6	25.5 25.4	25.5	7.8 7.0	7.4	28.5 28.5	28.5	96.6 95.3	96.0	6.5 6.4	6.5		3.3 3.7	3.5		14.0 14.0	14.0	
				Bottom	11	25.5 25.2	25.4	7.7 7.9	7.8	28.7 29.0	28.9	86.8 88.6	87.7	6.3 6.4	6.4		4.2 4.7	4.5		8.0 9.0	8.5	
24-Nov-08	Sunny	Calm	11:12	Surface	1	24.7 24.8	24.8	7.7 7.7	7.7	31.3 31.3	31.3	110.7 103.8	107.3	6.8 6.6	6.7	6.6	2.7 3.0	2.9	3.3	14.0 14.0	14.0	11.8
				Middle	6	24.6 24.6	24.6	8.0 7.8	7.9	31.5 31.5	31.5	90.4 89.8	90.1	6.3 6.4	6.4		3.2 3.3	3.3		8.0 9.0	8.5	
				Bottom	11	24.5 24.5	24.5	8.0 8.1	8.1	31.7 31.7	31.7	87.5 87.2	87.4	6.3 6.2	6.3		3.7 3.8	3.8		13.0 13.0	13.0	
26-Nov-08	Sunny	Calm	12:55	Surface	1	23.8 23.8	23.8	8.1 8.1	8.1	29.5 29.5	29.5	90.5 89.2	89.9	6.9 6.8	6.9	6.5	1.7 1.6	1.7	1.7	10.0 10.0	10.0	13.7
				Middle	6	23.3 23.3	23.3	8.5 8.1	8.3	30.5 30.4	30.5	78.4 77.5	78.0	6.0 6.0	6.0		1.6 1.6	1.6		15.0 15.0	15.0	
				Bottom	11	22.9 22.9	22.9	8.2 8.6	8.4	31.1 31.1	31.1	76.1 76.7	76.4	6.0 6.1	6.1		1.8 1.7	1.8		16.0 16.0	16.0	
28-Nov-08	Sunny	Calm	12:54	Surface	1	22.7 22.8	22.8	6.8 7.3	7.1	33.4 33.6	33.5	99.2 94.1	96.7	7.1 6.7	6.9	6.7	2.3 2.3	2.3	2.5	10.0 10.0	10.0	10.8
				Middle	6	22.8 22.8	22.8	7.8 6.9	7.4	33.7 33.8	33.8	91.8 91.6	91.7	6.5 6.5	6.5		2.6 2.6	2.6		7.0 8.0	7.5	
				Bottom	11	22.8 22.8	22.8	7.6 7.7	7.7	33.8 33.8	33.8	90.5 90.4	90.5	6.4 6.4	6.4		2.6 2.6	2.6		15.0 15.0	15.0	

Remarks: * DA: Depth-Averaged

** Calm: Small or no wave; Moderate: Between calm and rough; Rough : White capped or rougher

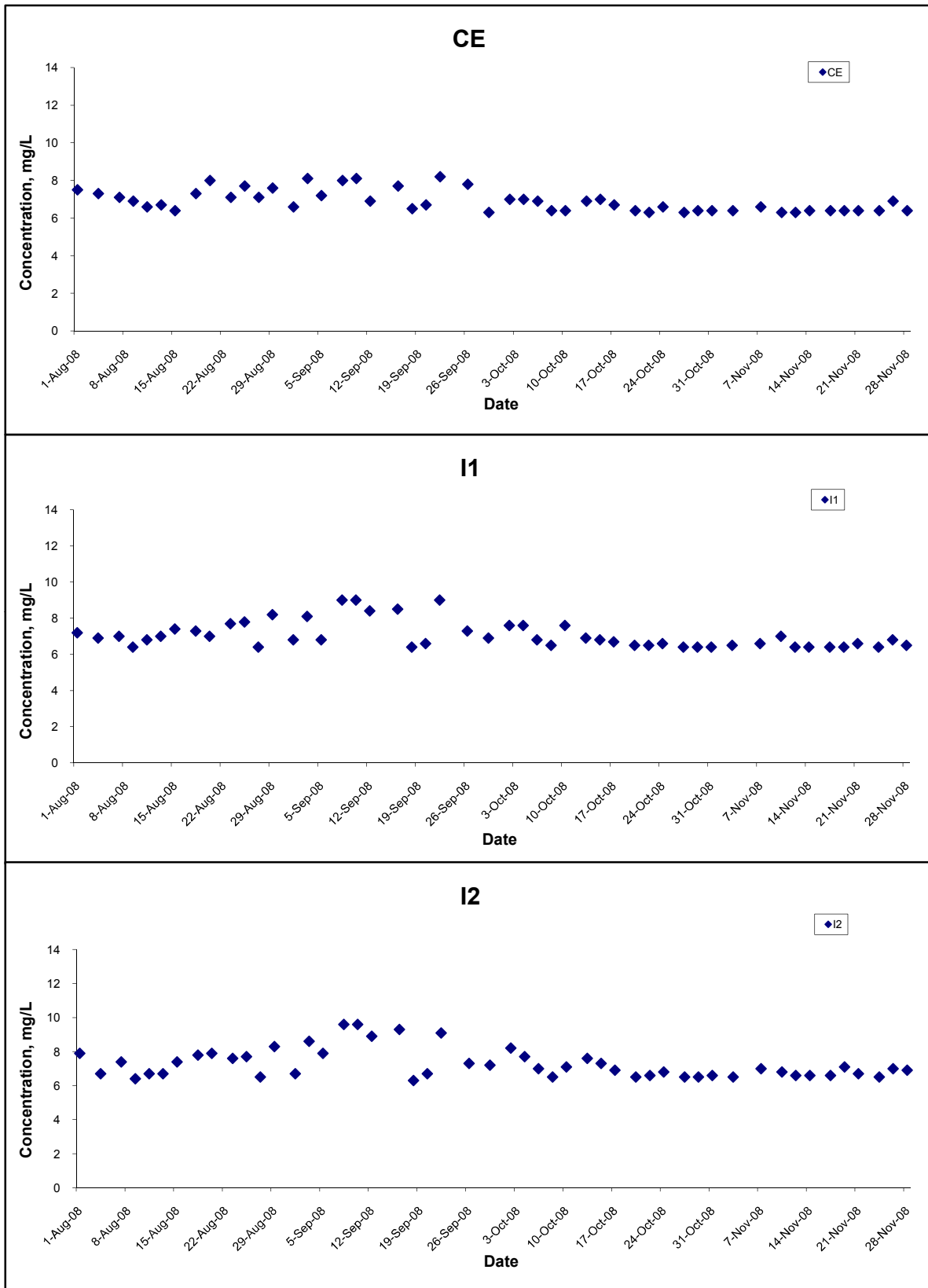
Water Quality Monitoring Results at Intake B - Mid-Flood Tide

Date	Weather Condition	Sea Condition**	Sampling Time	Depth (m)		Water Temperature (°C)		pH		Salinity ppt		DO Saturation (%)		Dissolved Oxygen (mg/L)			Turbidity (NTU)			Suspended Solids (mg/L)		
						Value	Average	Value	Average	Value	Average	Value	Average	Value	Average	DA*	Value	Average	DA*	Value	Average	DA*
3-Nov-08	Fine	Calm	10:52	Surface	1	27.2 27.4	27.3	8.0 7.9	8.0	32.1 32.6	32.4	91.2 86.5	88.9	7.0 6.2	6.6	6.5	2.5 2.6	2.6	3.1	17.0 17.0	17.0	11.5
				Middle	6	26.6 26.6	26.6	7.7 7.7	7.7	33.1 32.6	32.9	88.0 88.2	88.1	6.3 6.4	6.4		3.2 3.3	3.3		7.0 8.0	7.5	
				Bottom	11	25.9 26.0	26.0	7.8 7.6	7.7	30.2 31.6	30.9	92.2 92.0	92.1	6.6 6.6	6.6		3.3 3.4	3.4		10.0 10.0	10.0	
5-Nov-08	Cloudy	Calm	17:01	Surface	1	26.8 26.8	26.8	7.8 7.8	7.8	31.4 31.5	31.5	95.9 95.2	95.6	6.6 6.5	6.6	6.4	2.8 2.8	2.8	3.2	13.0 13.0	13.0	11.7
				Middle	6	26.8 26.8	26.8	7.6 7.8	7.7	31.4 31.4	31.4	88.5 87.7	88.1	6.2 6.1	6.2		3.2 3.4	3.3		10.0 10.0	10.0	
				Bottom	11	26.8 26.8	26.8	7.9 7.8	7.9	31.4 30.9	31.2	86.7 86.6	86.7	6.2 6.2	6.2		3.5 3.6	3.6		12.0 12.0	12.0	
7-Nov-08	Fine	Calm	15:32	Surface	1	27.1 27.1	27.1	8.0 7.9	8.0	31.0 31.1	31.1	86.1 86.0	86.1	6.8 6.9	6.9	6.5	2.2 2.2	2.2	2.7	12.0 12.0	12.0	12.3
				Middle	6	27.0 26.9	27.0	8.3 8.0	8.2	31.0 31.4	31.2	82.2 81.5	81.9	6.1 6.1	6.1		2.7 2.8	2.8		9.0 9.0	9.0	
				Bottom	11	26.7 26.7	26.7	7.8 8.4	8.1	29.9 29.9	29.9	80.0 80.5	80.3	6.1 6.0	6.1		3.2 3.2	3.2		16.0 16.0	16.0	
10-Nov-08	Fine	Calm	16:40	Surface	1	25.8 25.8	25.8	8.3 8.1	8.2	31.7 31.7	31.7	90.5 90.1	90.3	7.2 7.2	7.2	7.1	2.4 2.5	2.5	3.0	6.0 7.0	6.5	12.2
				Middle	6	25.9 25.8	25.9	7.8 7.5	7.7	31.6 31.8	31.7	87.6 87.3	87.5	7.0 7.0	7.0		3.0 3.1	3.1		10.0 10.0	10.0	
				Bottom	11	25.8 25.7	25.8	7.7 7.4	7.6	31.0 30.4	30.7	81.3 81.2	81.3	6.5 6.5	6.5		3.3 3.3	3.3		9.0 9.0	9.0	
12-Nov-08	Fine	Calm	17:32	Surface	1	25.4 25.4	25.4	8.0 7.9	8.0	32.0 32.0	32.0	88.2 89.5	88.9	6.6 6.7	6.7	6.9	2.0 1.9	2.0	2.0	10.0 10.0	10.0	10.7
				Middle	6	25.3 25.4	25.4	7.9 7.9	7.9	32.1 32.6	32.4	91.2 90.5	90.9	7.0 6.9	7.0		1.8 2.0	1.9		13.0 13.0	13.0	
				Bottom	11	25.0 25.0	25.0	7.8 8.1	8.0	33.1 32.6	32.9	88.0 88.2	88.1	6.3 6.4	6.4		2.1 2.2	2.2		9.0 9.0	9.0	
14-Nov-08	Fine	Calm	18:07	Surface	1	25.5 25.4	25.5	8.2 8.1	8.2	31.7 31.7	31.7	93.7 94.3	94.0	6.7 6.7	6.7	6.5	2.0 2.1	2.1	2.5	10.0 11.0	10.5	14.8
				Middle	6	25.3 25.3	25.3	8.0 8.2	8.1	31.9 32.2	32.1	89.2 86.7	88.0	6.5 6.1	6.3		2.6 2.7	2.7		17.0 17.0	17.0	
				Bottom	11	25.0 25.0	25.0	8.3 8.2	8.3	32.5 31.8	32.2	87.0 87.2	87.1	6.1 6.2	6.2		2.7 2.8	2.8		17.0 17.0	17.0	
17-Nov-08	Sunny	Calm	11:12	Surface	1	25.4 25.4	25.4	8.0 7.9	8.0	31.8 31.8	31.8	90.9 91.9	91.4	6.6 6.7	6.7	6.6	2.0 2.1	2.1	2.3	16.0 16.0	16.0	10.5
				Middle	6	25.3 25.4	25.4	8.1 8.0	8.1	32.0 32.4	32.2	90.1 86.5	88.3	6.7 6.2	6.5		2.2 2.3	2.3		8.0 9.0	8.5	
				Bottom	11	25.0 25.0	25.0	7.8 8.2	8.0	32.8 32.2	32.5	87.5 87.6	87.6	6.2 6.3	6.3		2.4 2.5	2.5		7.0 7.0	7.0	
19-Nov-08	Fine	Calm	14:24	Surface	1	24.9 25.0	25.0	8.6 8.3	8.5	30.8 30.8	30.8	101.5 101.5	101.5	7.4 7.4	7.4	6.9	1.7 1.8	1.8	2.2	12.0 12.0	12.0	12.7
				Middle	6	25.3 25.3	25.3	8.1 8.0	8.1	30.7 30.6	30.7	86.6 86.6	86.6	6.4 6.4	6.4		2.3 2.4	2.4		10.0 10.0	10.0	
				Bottom	11	25.3 25.3	25.3	8.1 8.0	8.1	30.5 29.4	30.0	86.2 86.4	86.3	6.4 6.4	6.4		2.3 2.3	2.3		16.0 16.0	16.0	
21-Nov-08	Sunny	Calm	14:48	Surface	1	26.3 26.1	26.2	8.2 8.2	8.2	28.0 27.8	27.9	95.0 101.3	98.2	6.2 6.7	6.5	6.4	2.2 2.2	2.2	2.8	8.0 9.0	8.5	13.7
				Middle	6	25.7 25.3	25.5	7.6 7.3	7.5	28.8 28.7	28.8	93.5 88.3	90.9	6.2 6.1	6.2		2.6 2.8	2.7		16.0 17.0	16.5	
				Bottom	11	25.2 25.2	25.2	7.4 7.2	7.3	29.1 29.1	29.1	83.8 81.7	82.8	6.3 6.1	6.2		3.4 3.4	3.4		16.0 16.0	16.0	
24-Nov-08	Sunny	Calm	16:04	Surface	1	24.8 24.8	24.8	8.3 8.2	8.3	31.6 31.6	31.6	95.2 95.5	95.4	6.7 6.7	6.7	6.5	2.2 2.3	2.3	2.7	15.0 15.0	15.0	14.0
				Middle	6	24.8 24.8	24.8	8.0 7.8	7.9	31.7 31.9	31.8	87.8 86.3	87.1	6.3 6.2	6.3		2.7 2.9	2.8		12.0 12.0	12.0	
				Bottom	11	24.6 24.6	24.6	7.8 7.8	7.8	32.0 31.4	31.7	86.0 86.1	86.1	6.1 6.2	6.2		2.9 3.0	3.0		15.0 15.0	15.0	
26-Nov-08	Sunny	Calm	16:39	Surface	1	23.0 23.0	23.0	8.7 8.5	8.6	30.5 30.5	30.5	77.5 77.1	77.3	6.0 6.0	6.0	6.6	1.8 1.7	1.8	2.0	10.0 10.0	10.0	12.8
				Middle	6	24.0 24.0	24.0	8.3 8.2	8.3	28.9 28.9	28.9	94.9 94.4	94.7	7.2 7.1	7.2		2.0 1.9	2.0		17.0 16.0	16.5	
				Bottom	11	23.7 23.6	23.7	8.2 8.1	8.2	29.6 29.7	29.7	87.3 86.3	86.8	6.7 6.6	6.7		2.1 2.1	2.1		12.0 12.0	12.0	
28-Nov-08	Fine	Calm	17:44	Surface	1	22.8 22.9	22.9	8.2 8.2	8.2	33.9 33.9	33.9	89.8 89.8	89.8	6.4 6.4	6.4	6.4	2.3 2.2	2.3	2.4	14.0 13.0	13.5	13.8
				Middle	6	22.8 22.8	22.8	7.6 7.1	7.4	33.9 33.9	33.9	88.9 88.8	88.9	6.3 6.3	6.3		2.3 2.4	2.4		13.0 13.0	13.0	
				Bottom	11	22.8 22.8	22.8	7.2 7.2	7.2	33.9 33.9	33.9	88.4 88.3	88.4	6.3 6.3	6.3		2.4 2.4	2.4		15.0 15.0	15.0	

Remarks: * DA: Depth-Averaged

** Calm: Small or no wave; Moderate: Between calm and rough; Rough : White capped or rougher

Dissolved Oxygen (Surface & Middle) at Mid-Ebb Tide



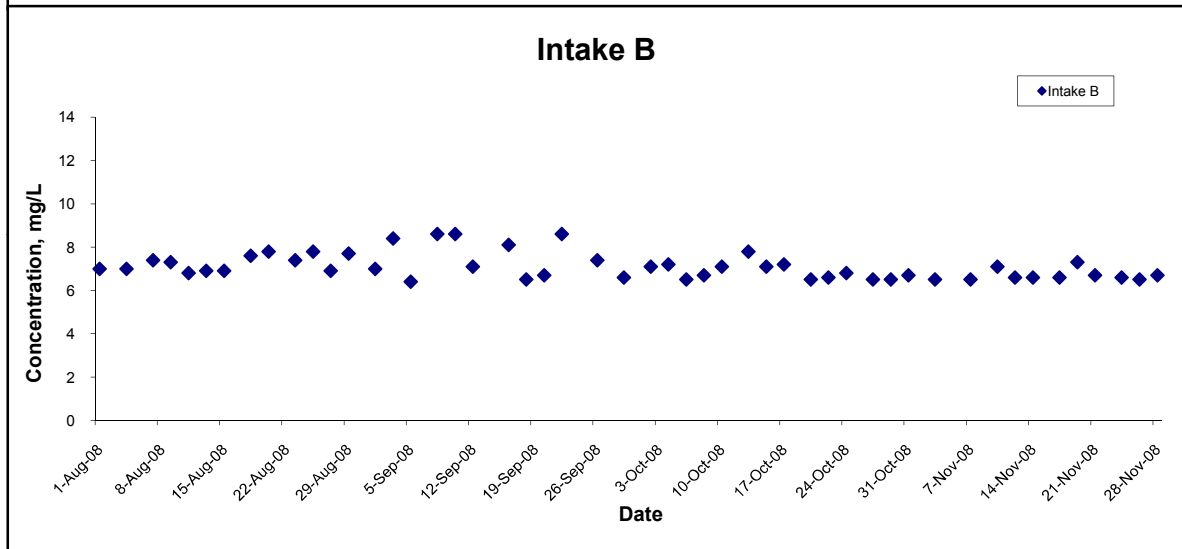
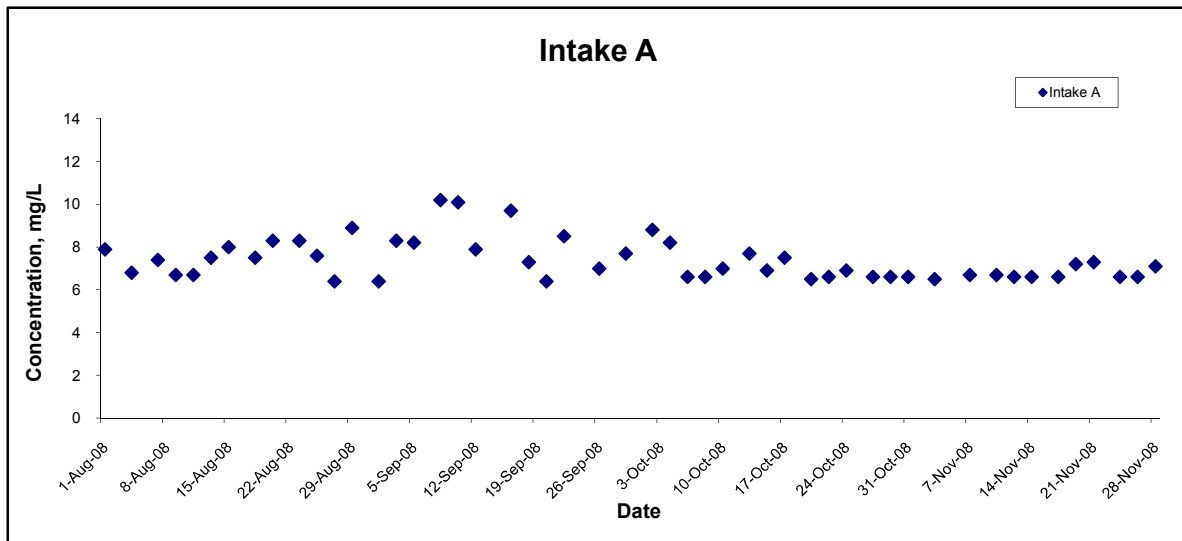
Title
 Contract No. DC/2007/10
 Design and Construction of Hong Kong West Drainage Tunnel
 Graphical Presentation of Water Quality
 Monitoring Results

Scale
 N.T.S
 Date
 Nov 08

Project
 No. MA8001
 Appendix
 H

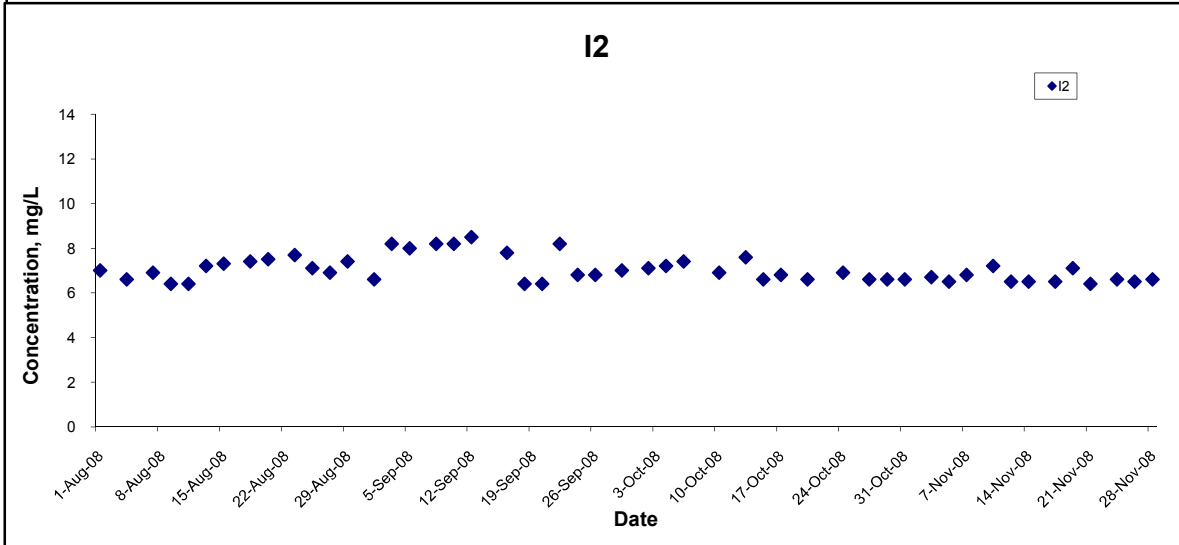
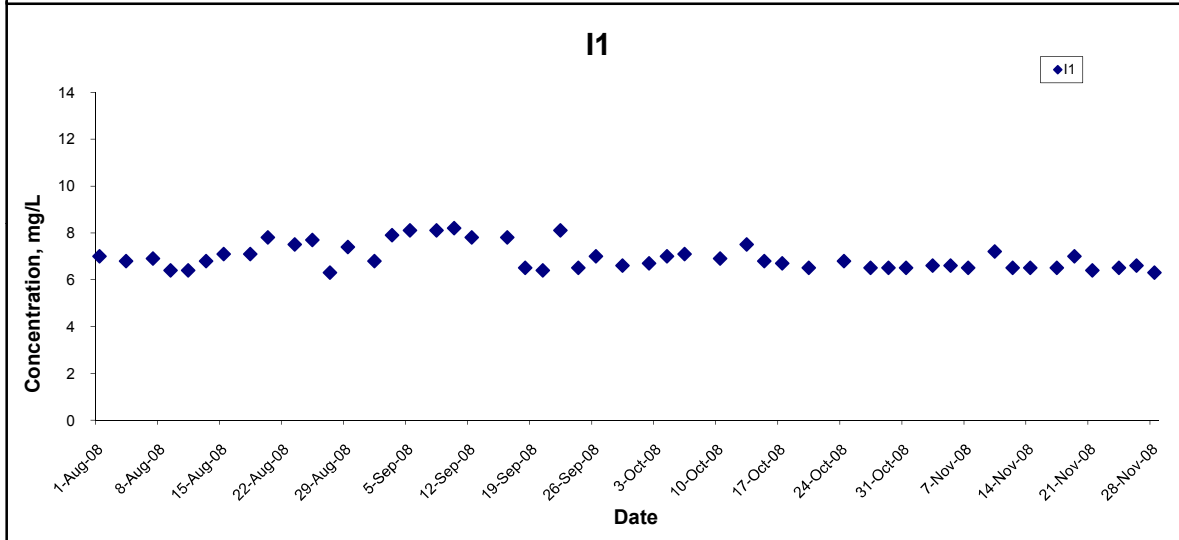
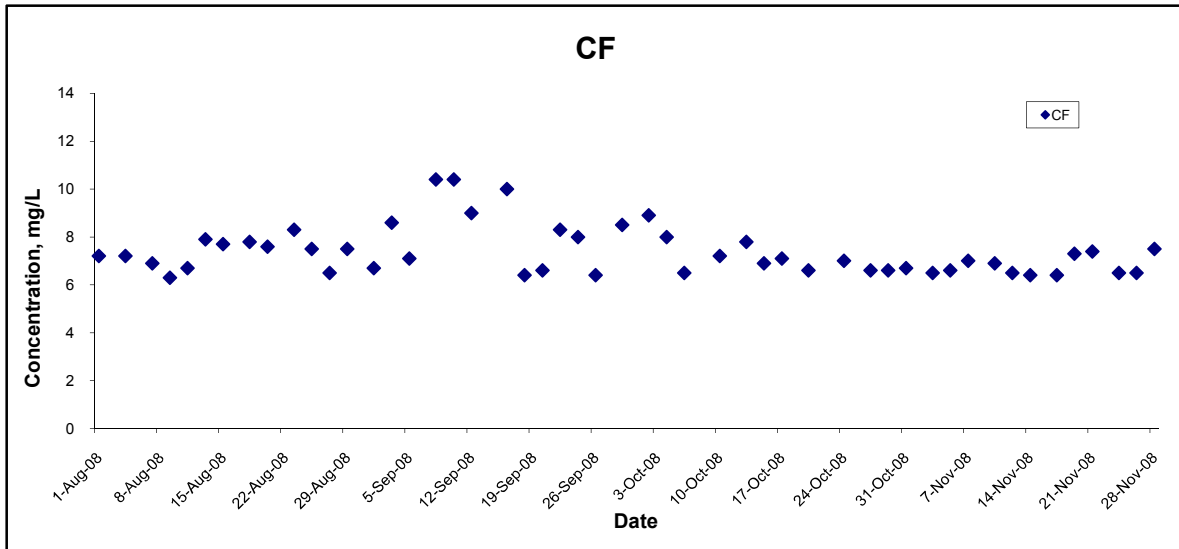


Dissolved Oxygen (Surface & Middle) at Mid-Ebb Tide



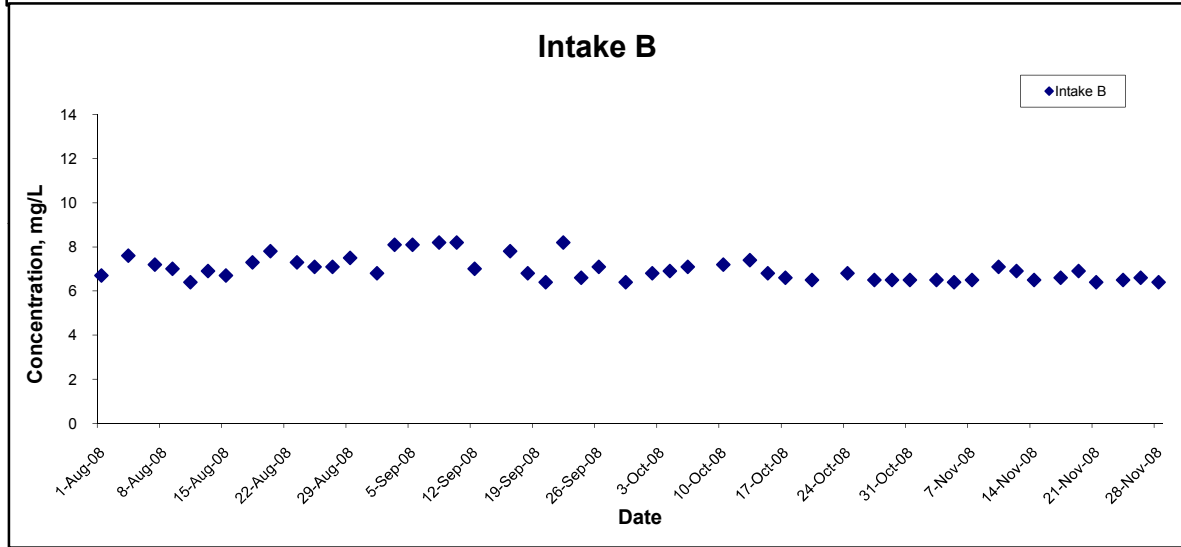
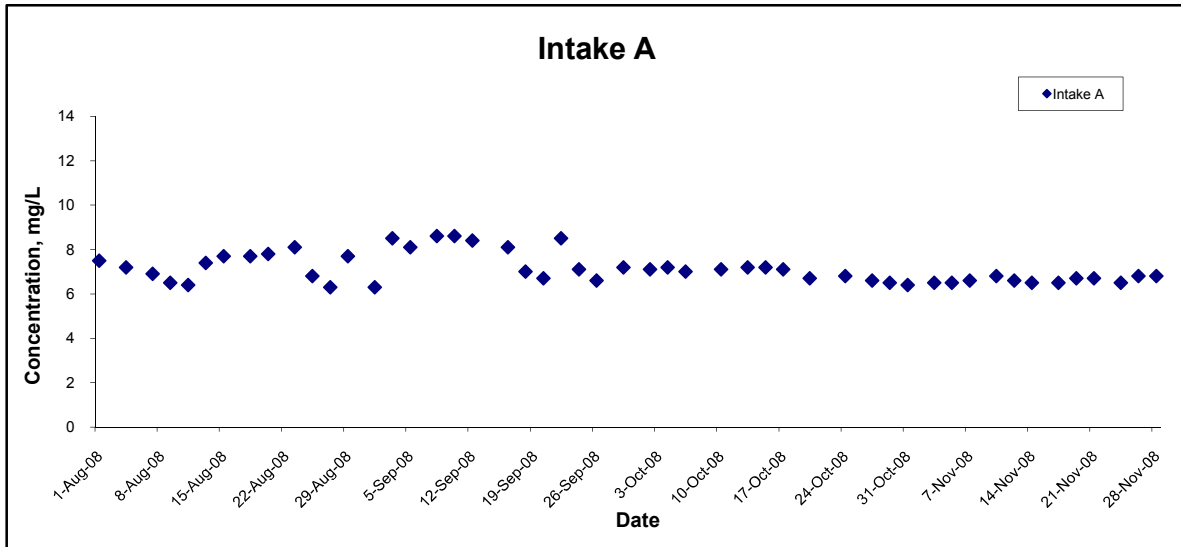
Title Contract No. DC/2007/10 Design and Construction of Hong Kong West Drainage Tunnel Graphical Presentation of Water Quality Monitoring Results	Scale N.T.S	Project No. MA8001	
	Date Nov 08	Appendix H	

Dissolved Oxygen (Surface & Middle) at Mid-Flood Tide



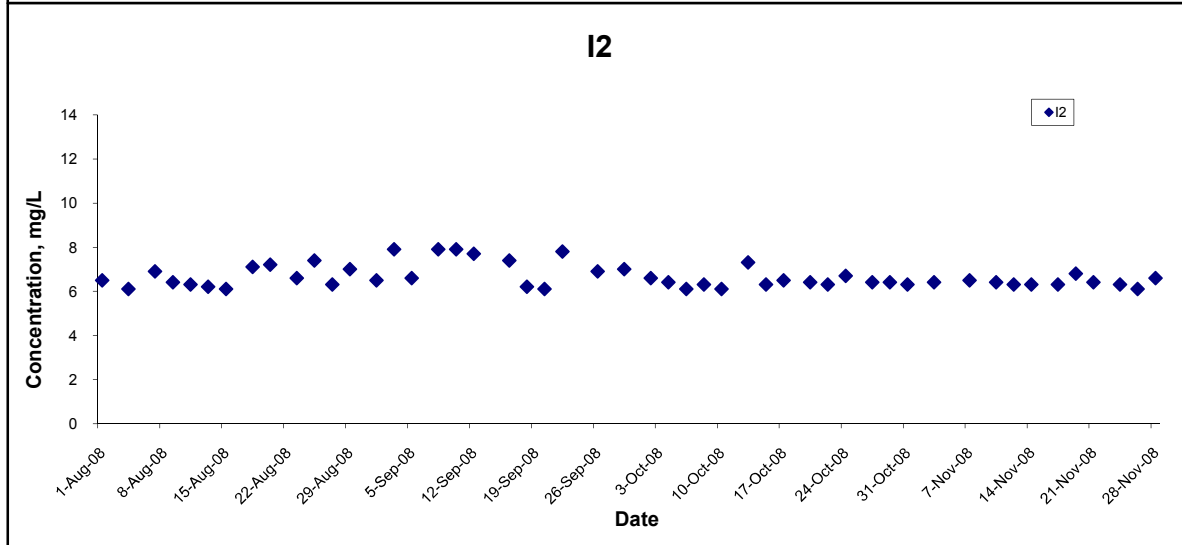
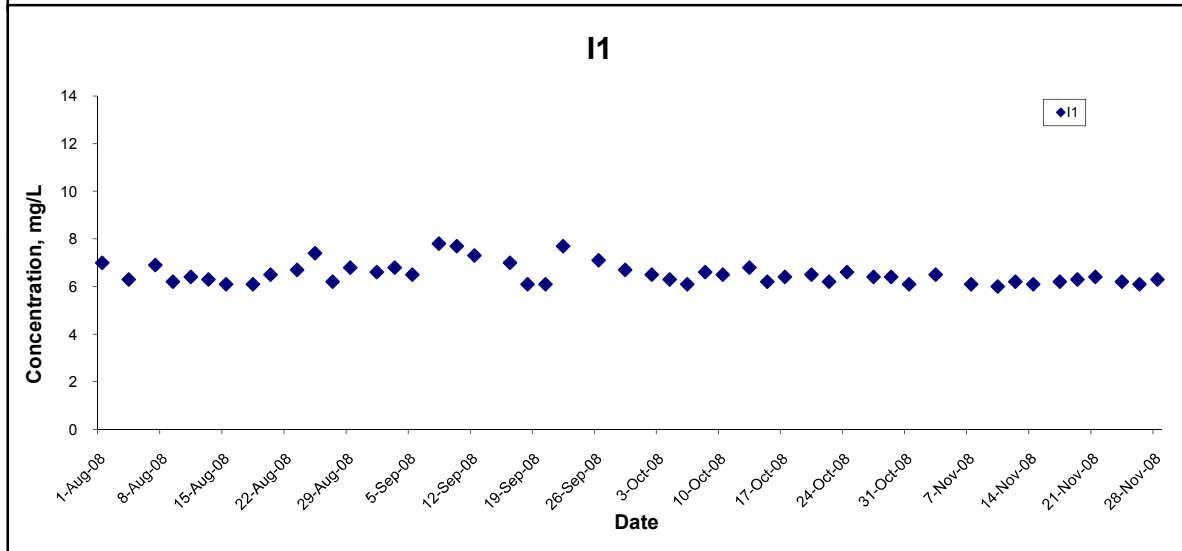
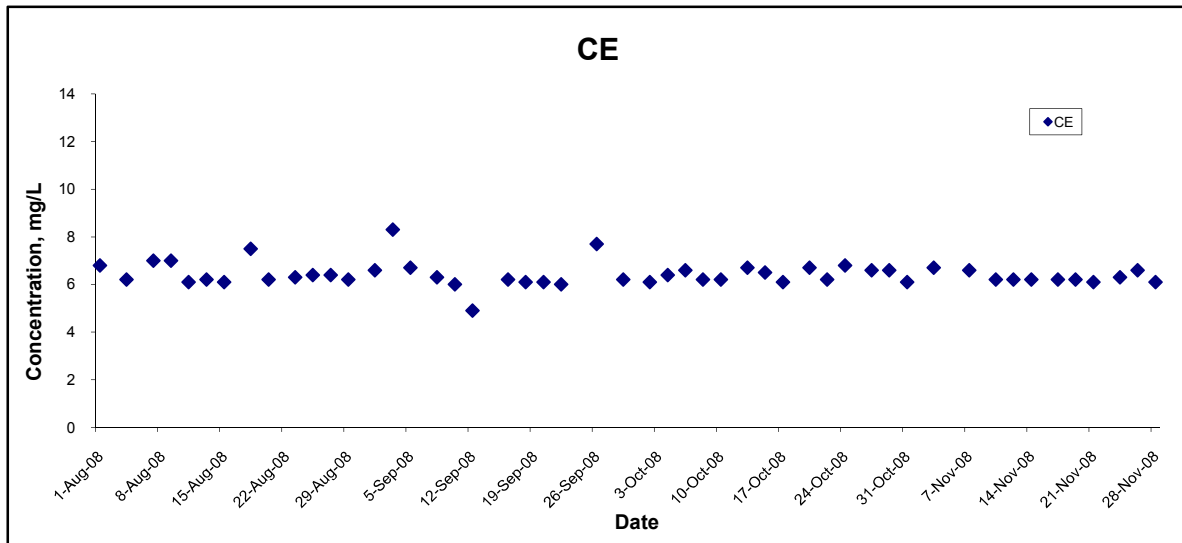
Title Contract No. DC/2007/10 Design and Construction of Hong Kong West Drainage Tunnel Graphical Presentation of Water Quality Monitoring Results	Scale N.T.S	Project No. MA8001	
	Date Nov 08	Appendix H	

Dissolved Oxygen (Surface & Middle) at Mid-Flood Tide



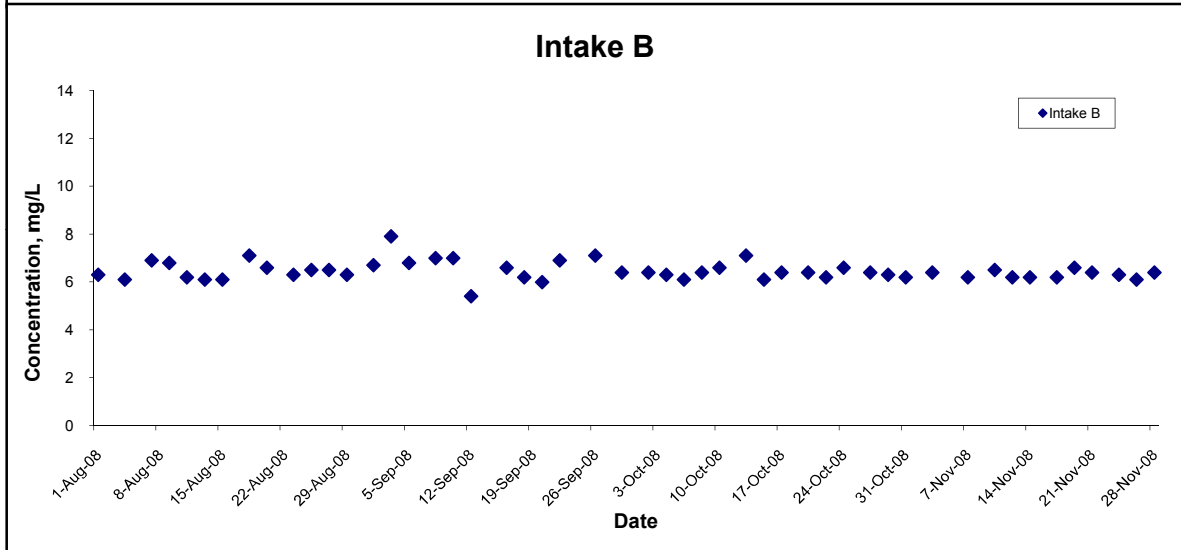
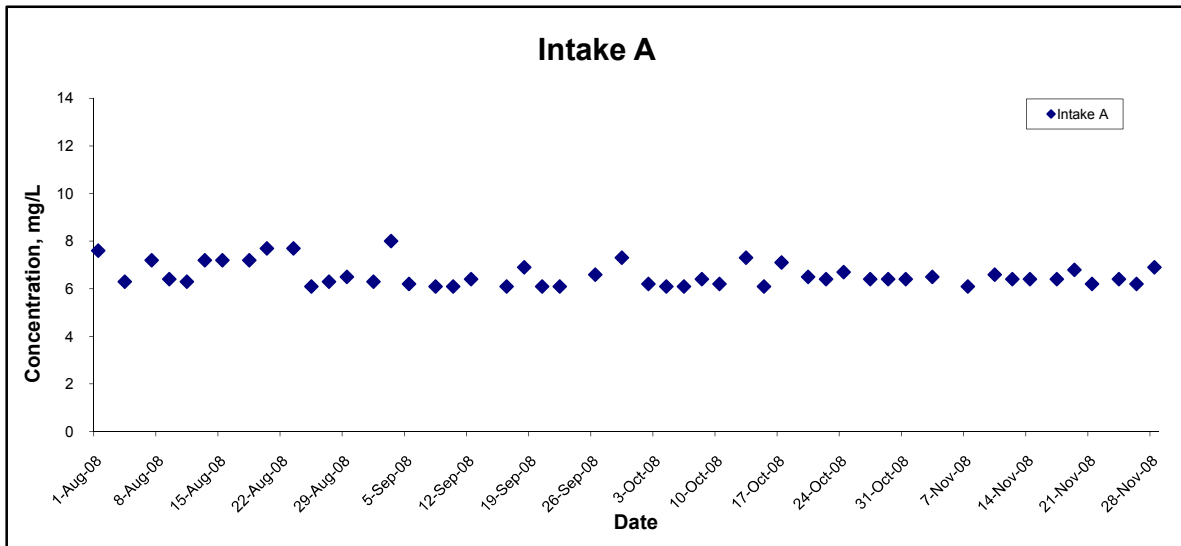
Title Contract No. DC/2007/10 Design and Construction of Hong Kong West Drainage Tunnel Graphical Presentation of Water Quality Monitoring Results	Scale N.T.S	Project No. MA8001	CINOTECH
	Date Nov 08	Appendix H	

Dissolved Oxygen (Bottom) at Mid-Ebb Tide



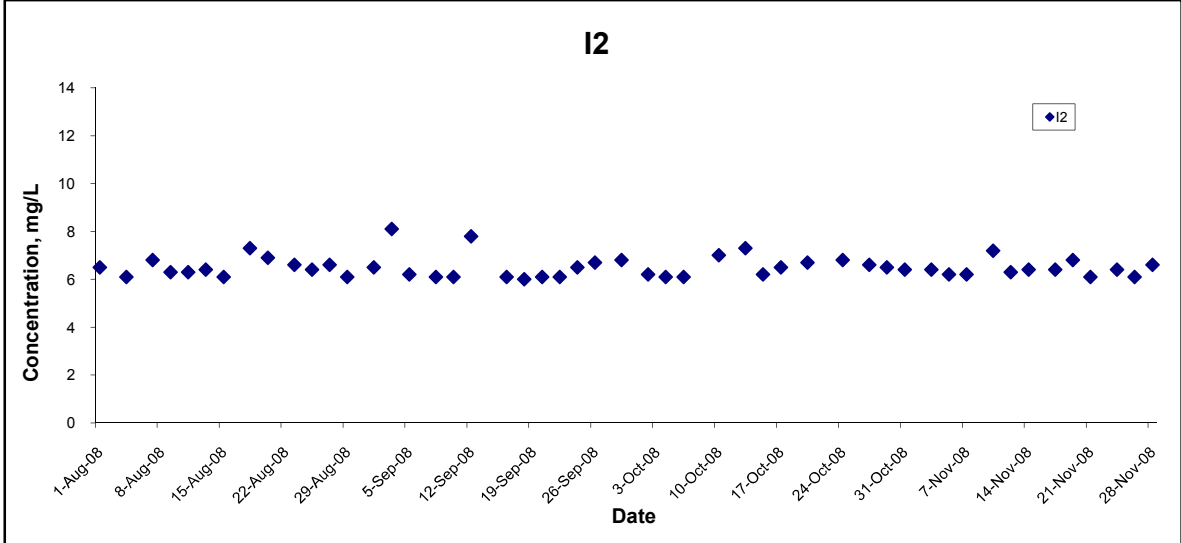
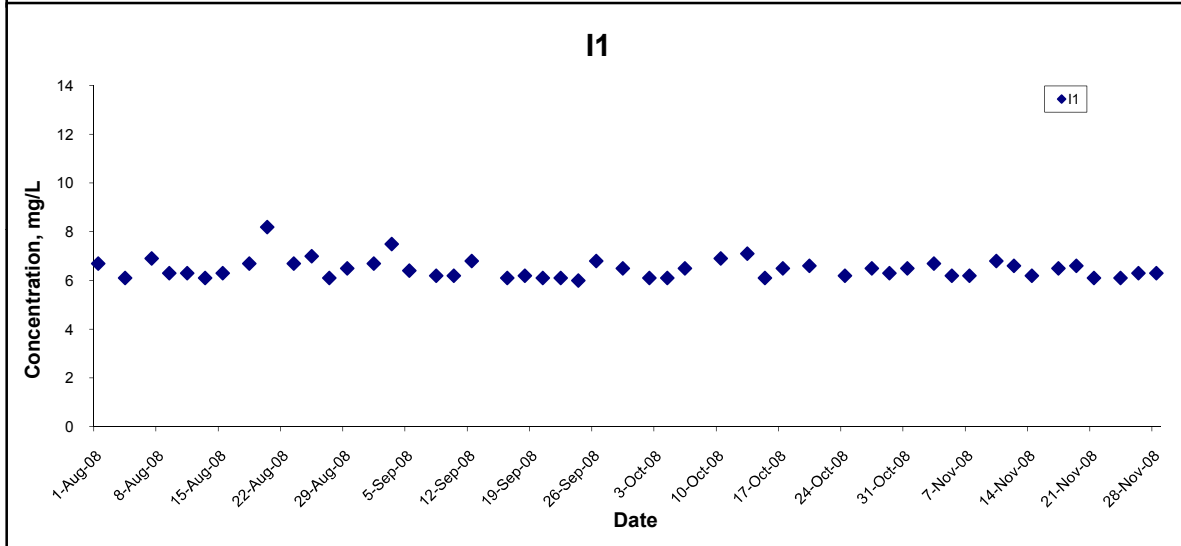
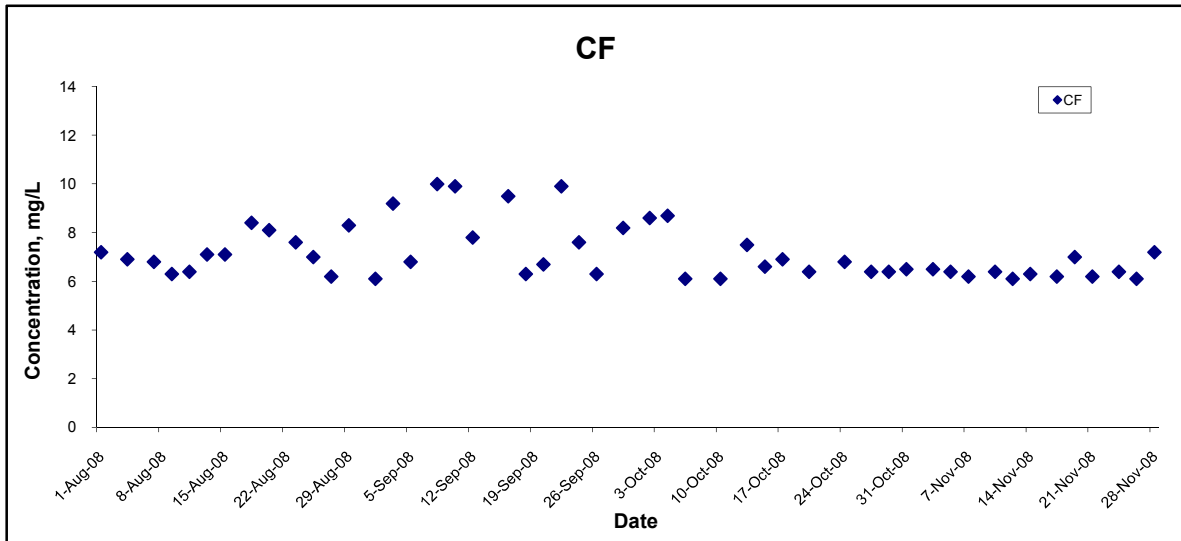
Title Contract No. DC/2007/10 Design and Construction of Hong Kong West Drainage Tunnel Graphical Presentation of Water Quality Monitoring Results	Scale N.T.S	Project No. MA8001	
	Date Nov 08	Appendix H	

Dissolved Oxygen (Bottom) at Mid-Ebb Tide



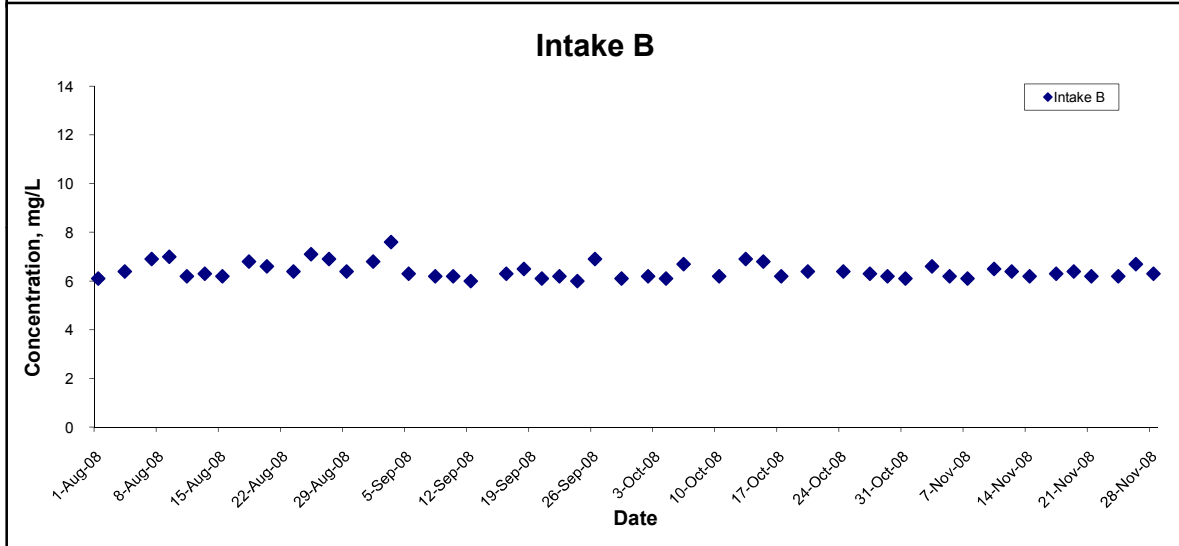
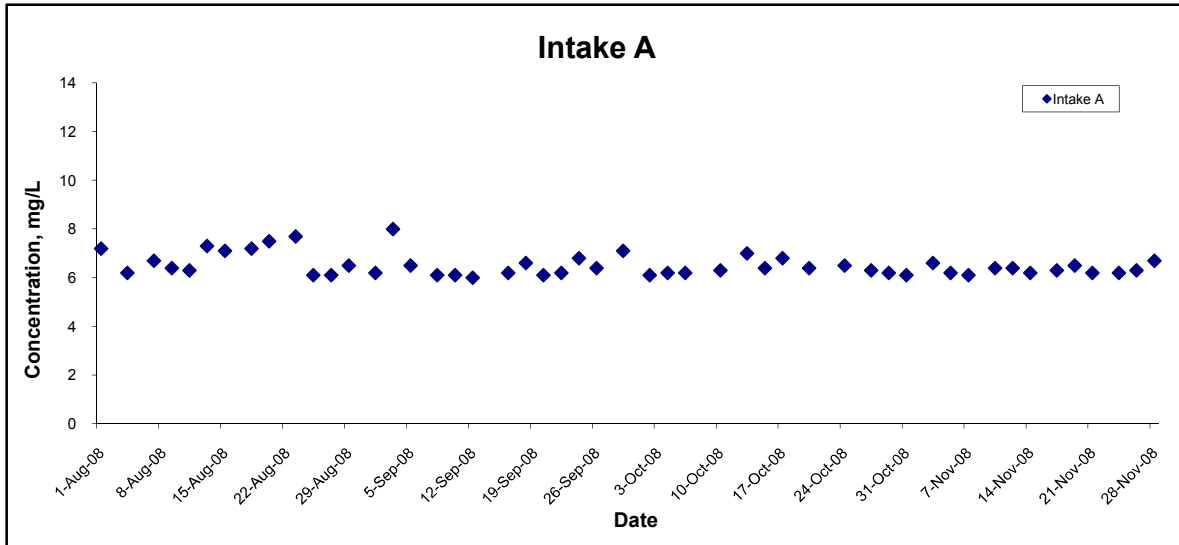
Title Contract No. DC/2007/10 Design and Construction of Hong Kong West Drainage Tunnel Graphical Presentation of Water Quality Monitoring Results	Scale N.T.S	Project No. MA8001	
	Date Nov 08	Appendix H	

Dissolved Oxygen (Bottom) at Mid-Flood Tide



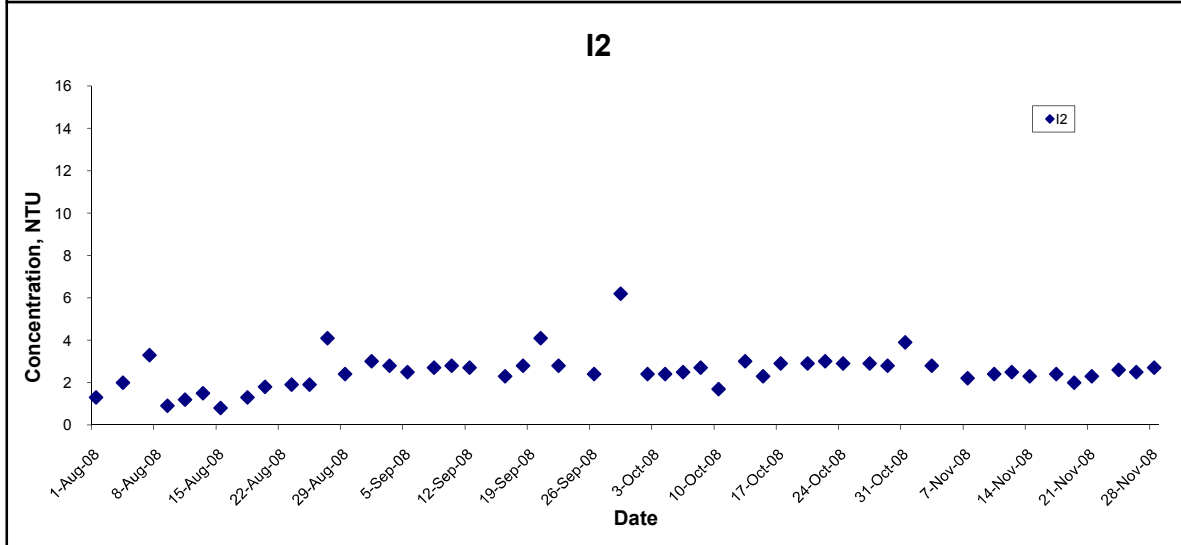
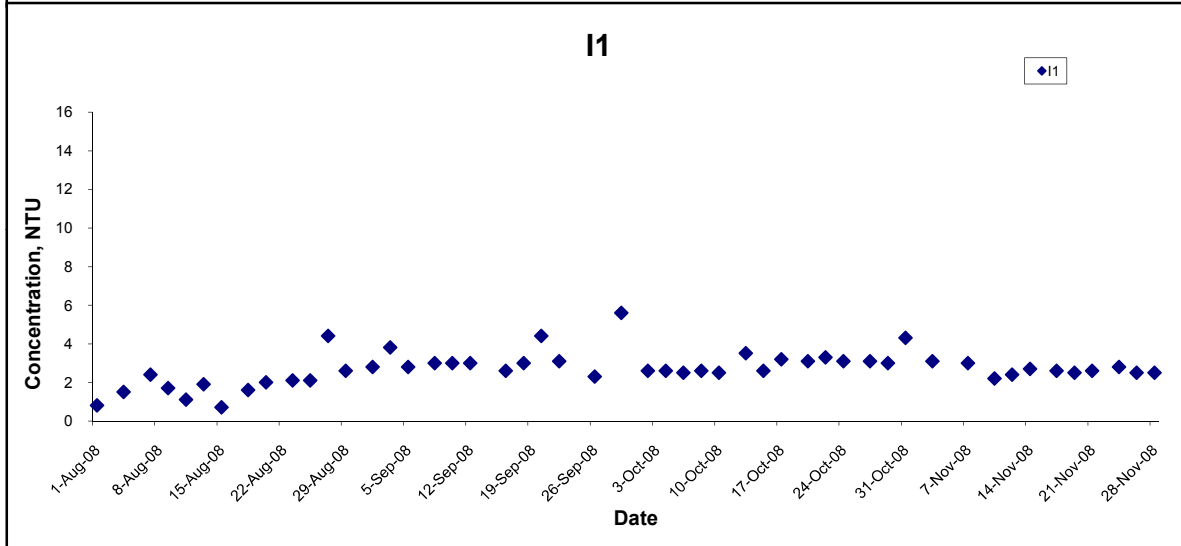
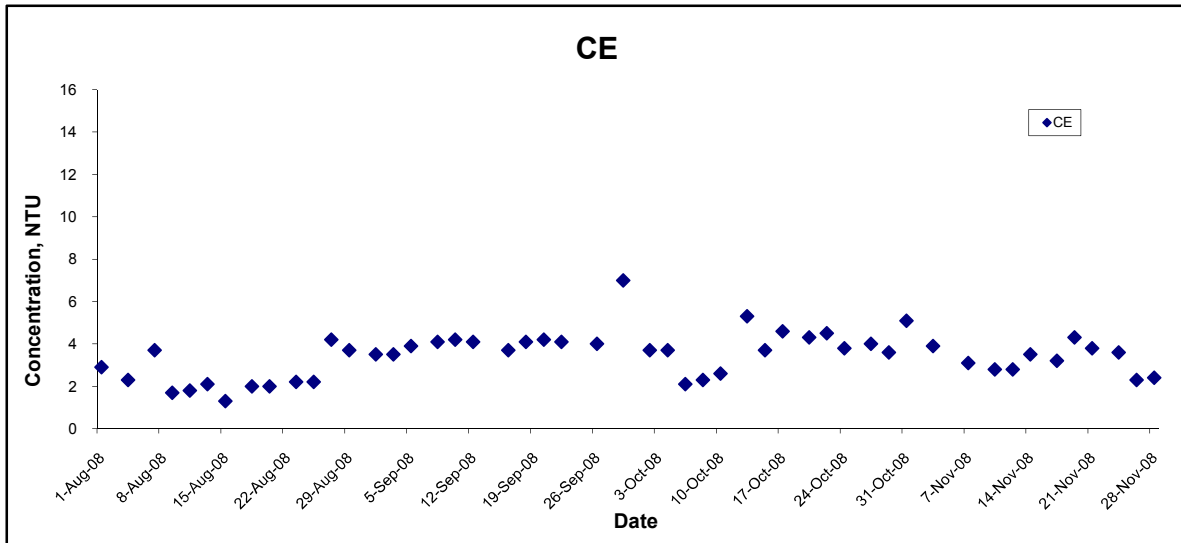
Title Contract No. DC/2007/10 Design and Construction of Hong Kong West Drainage Tunnel Graphical Presentation of Water Quality Monitoring Results	Scale N.T.S	Project No. MA8001	
	Date Nov 08	Appendix H	

Dissolved Oxygen (Bottom) at Mid-Flood Tide



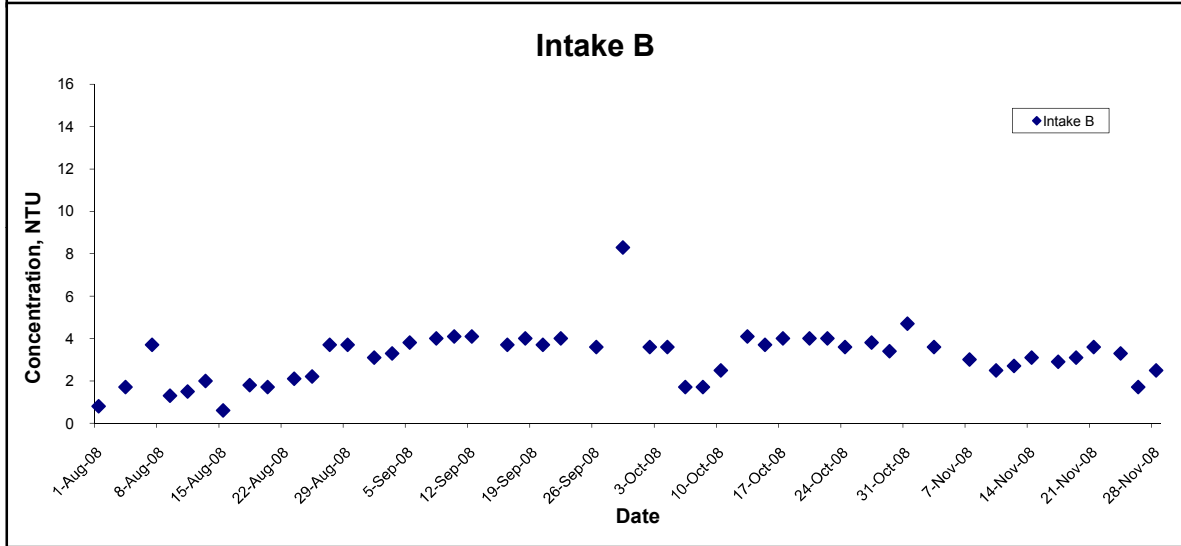
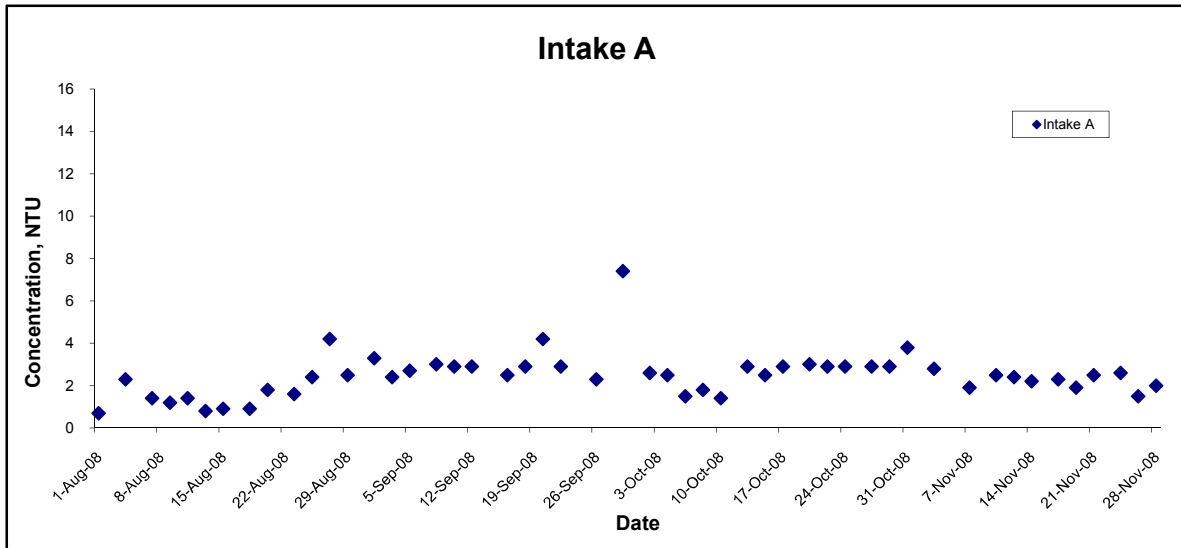
Title Contract No. DC/2007/10 Design and Construction of Hong Kong West Drainage Tunnel Graphical Presentation of Water Quality Monitoring Results	Scale N.T.S	Project No. MA8001	
	Date Nov 08	Appendix H	

Turbidity (Depth-averaged) at Mid-Ebb Tide



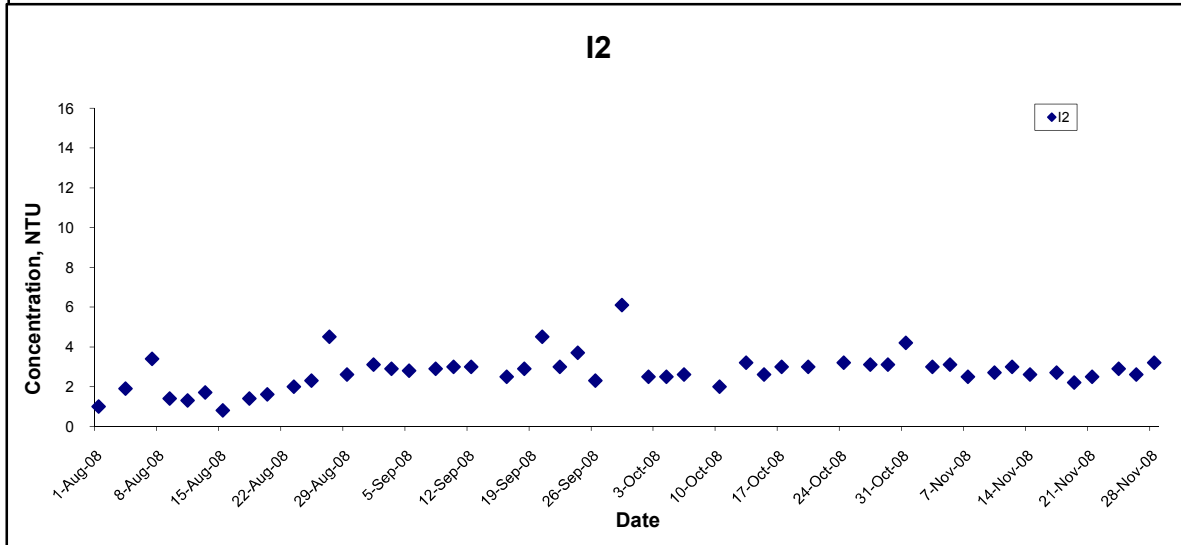
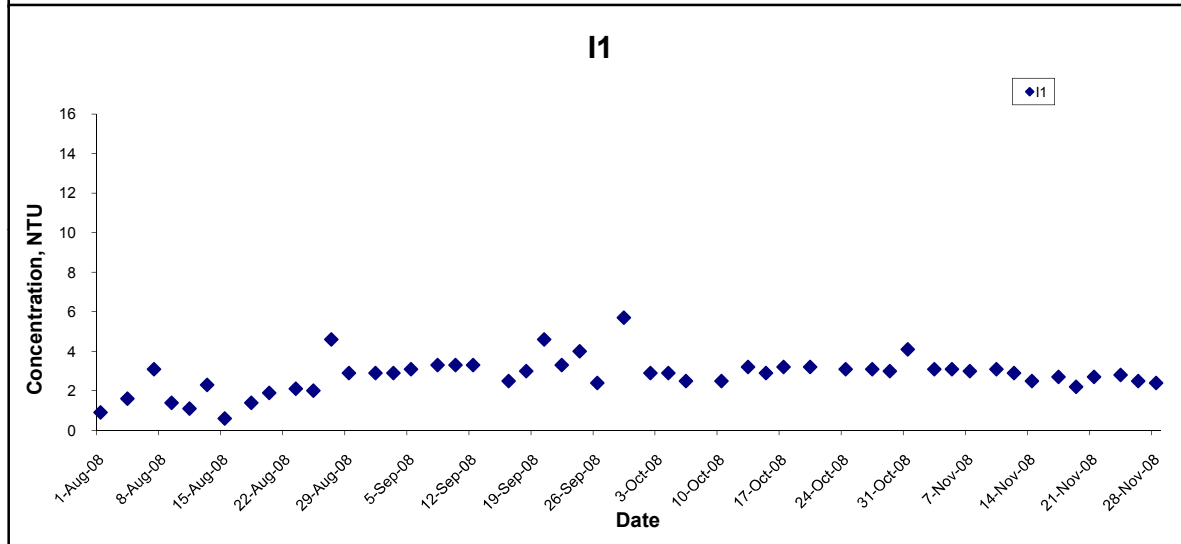
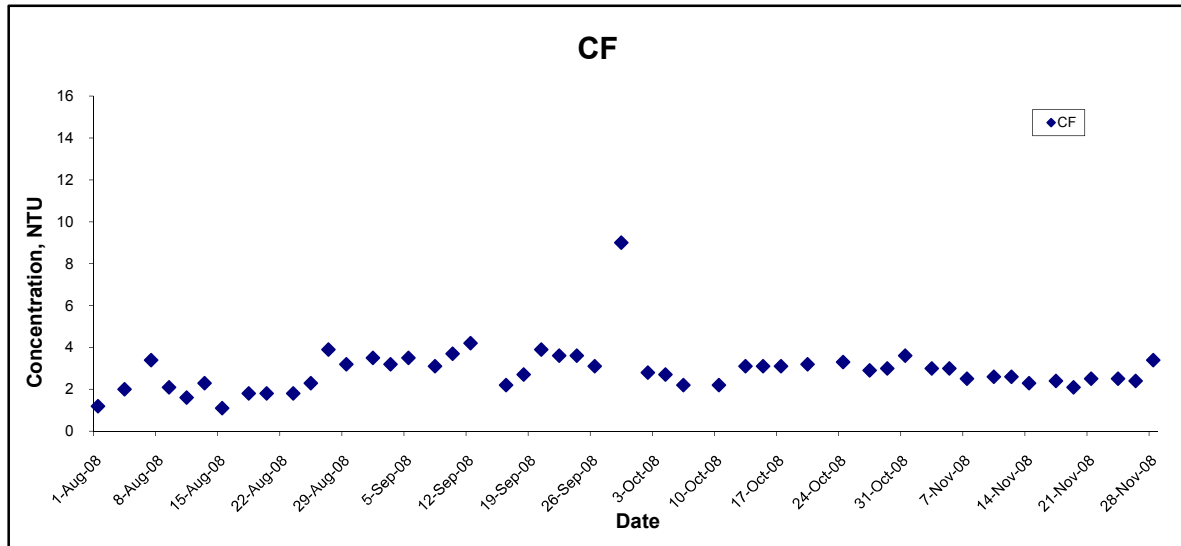
Title Contract No. DC/2007/10 Design and Construction of Hong Kong West Drainage Tunnel Graphical Presentation of Water Quality Monitoring Results	Scale N.T.S	Project No. MA8001	
	Date Nov 08	Appendix H	

Turbidity (Depth-averaged) at Mid-Ebb Tide



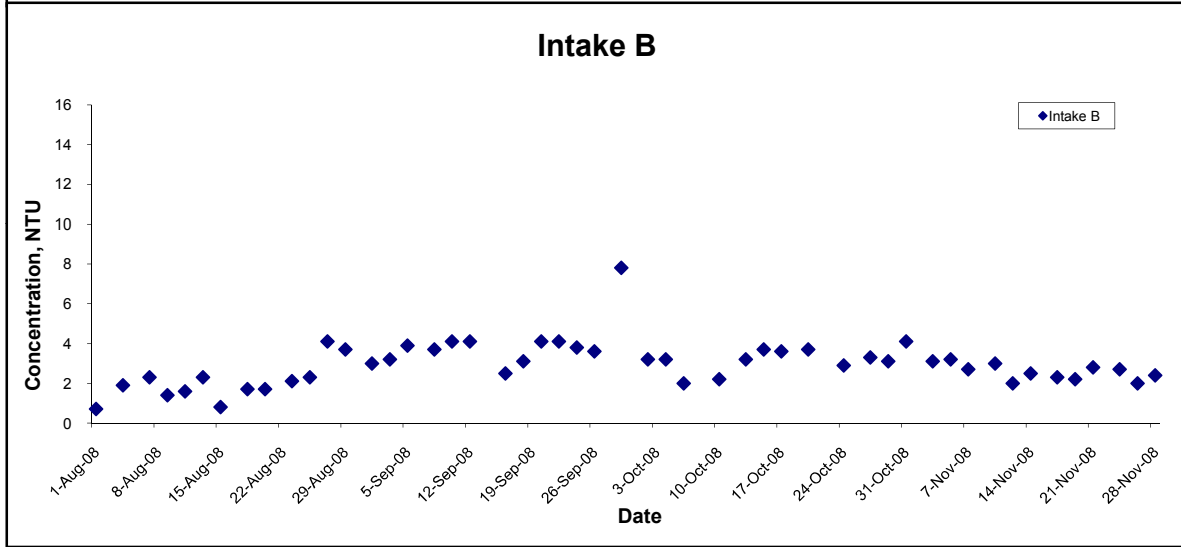
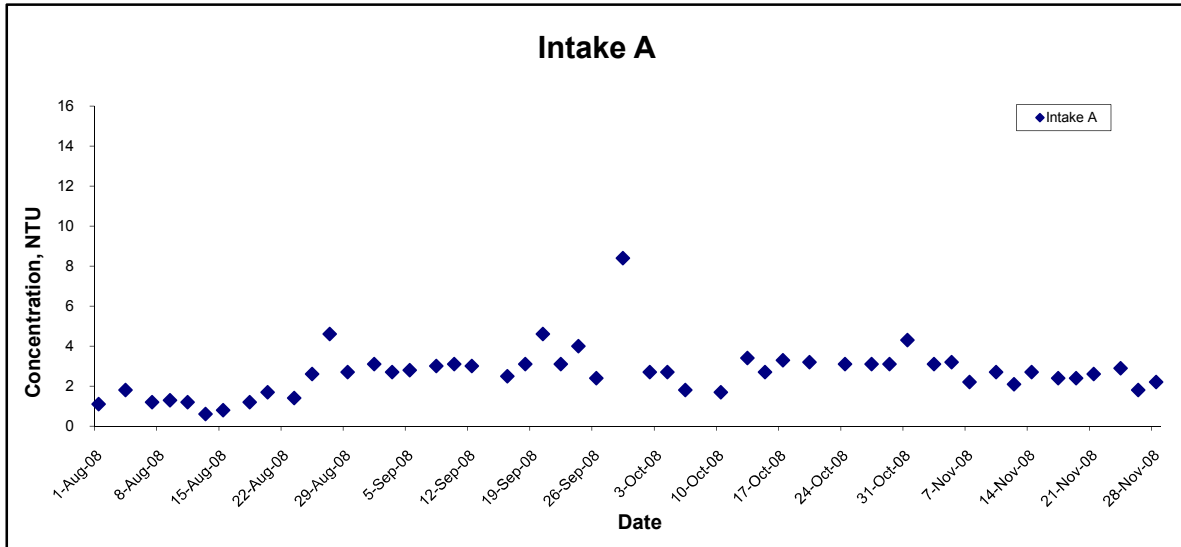
Title Contract No. DC/2007/10 Design and Construction of Hong Kong West Drainage Tunnel Graphical Presentation of Water Quality Monitoring Results	Scale N.T.S	Project No. MA8001	
	Date Nov 08	Appendix H	

Turbidity (Depth-averaged) at Mid-Flood Tide



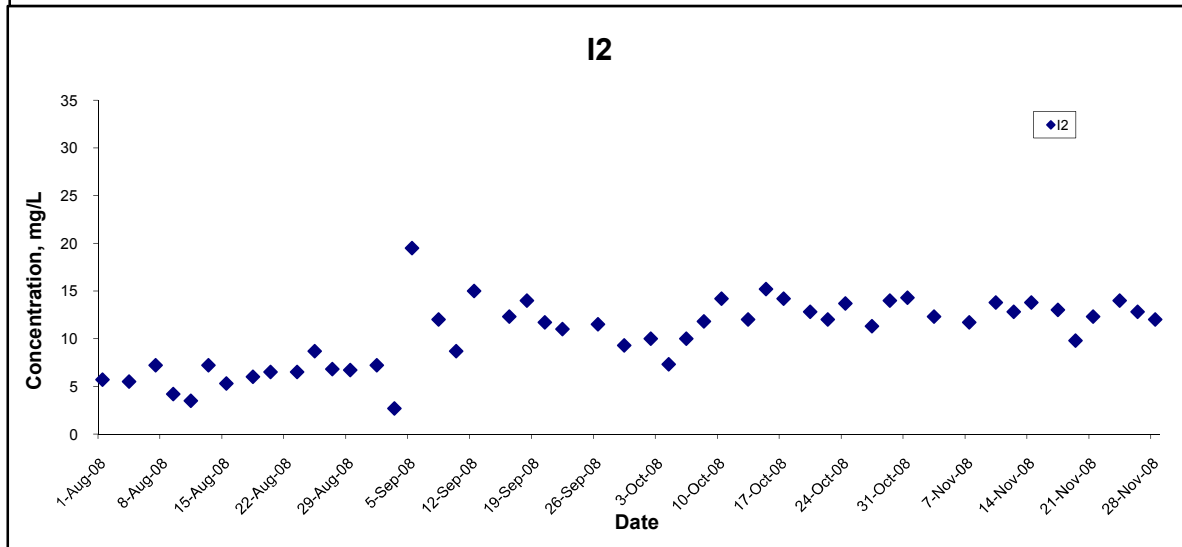
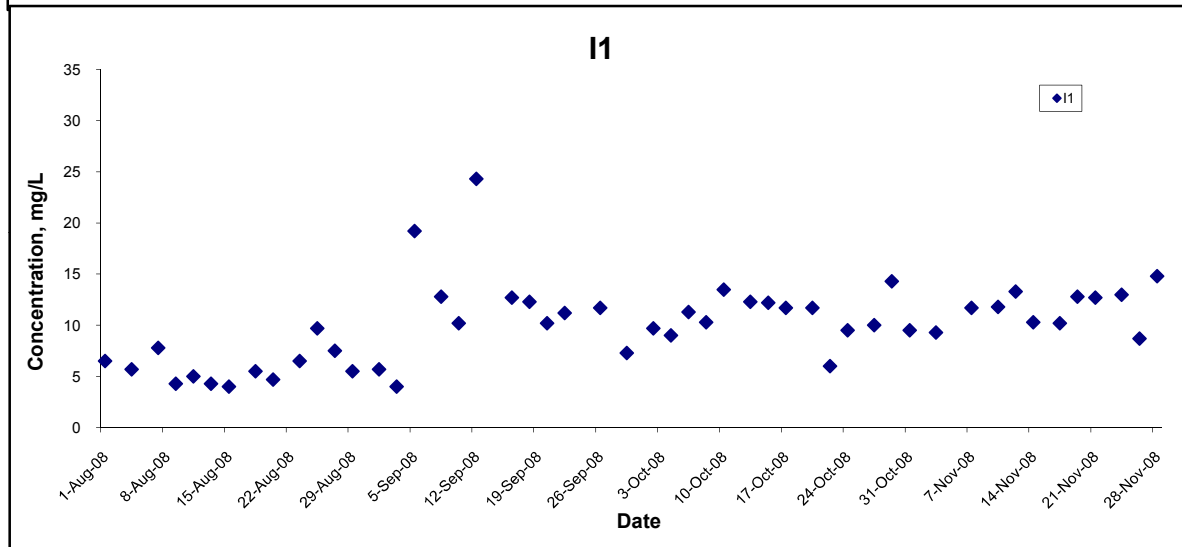
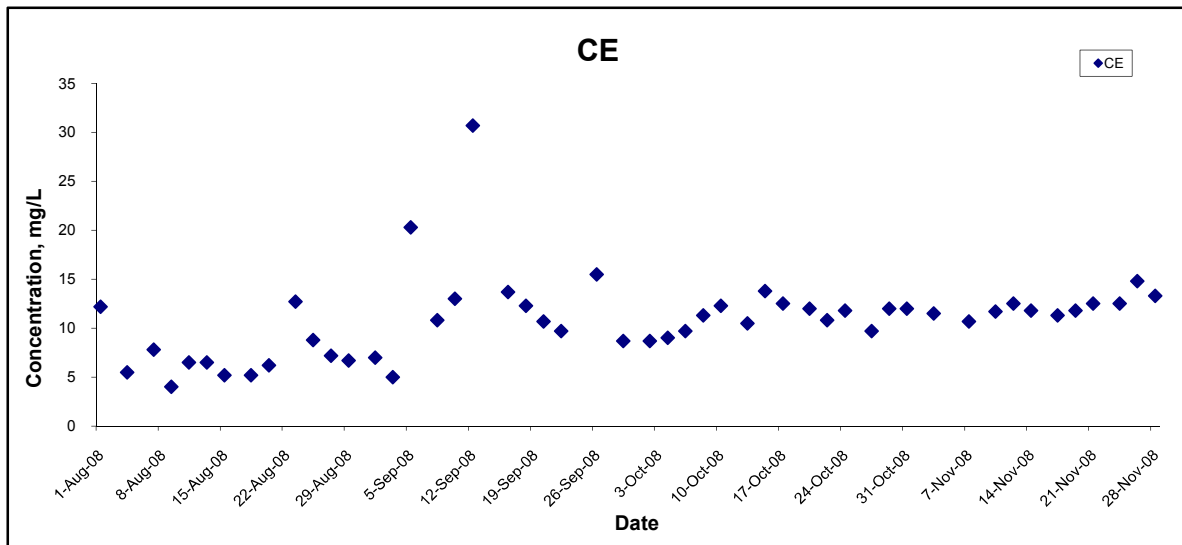
Title Contract No. DC/2007/10 Design and Construction of Hong Kong West Drainage Tunnel Graphical Presentation of Water Quality Monitoring Results	Scale N.T.S	Project No. MA8001	
	Date Nov 08	Appendix H	

Turbidity (Depth-averaged) at Mid-Flood Tide



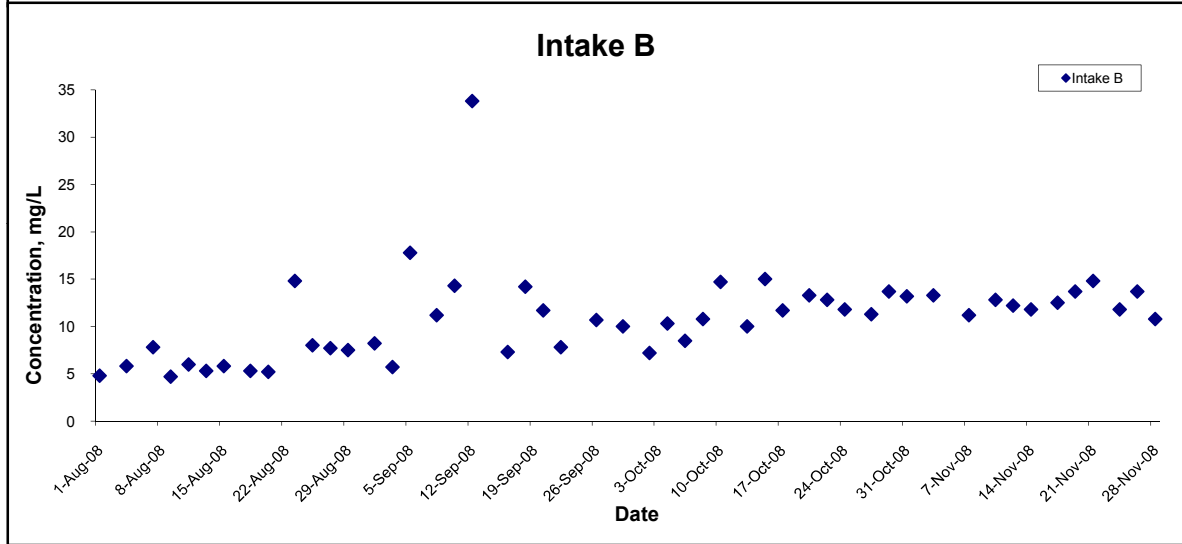
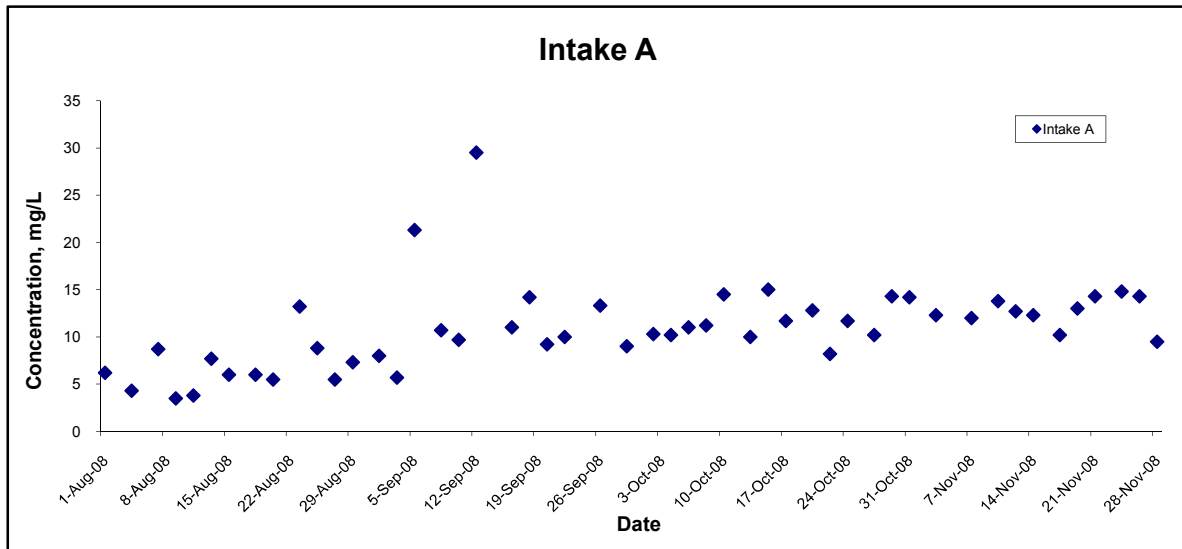
Title Contract No. DC/2007/10 Design and Construction of Hong Kong West Drainage Tunnel Graphical Presentation of Water Quality Monitoring Results	Scale N.T.S	Project No. MA8001	
	Date Nov 08	Appendix H	

Suspended Solids (Depth-averaged) at Mid-Ebb Tide



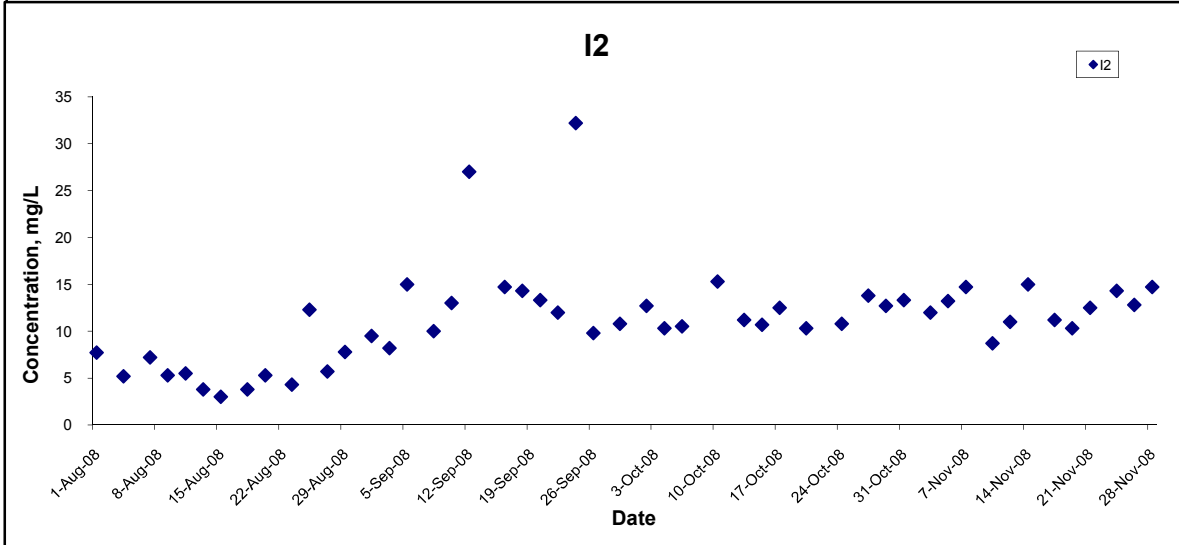
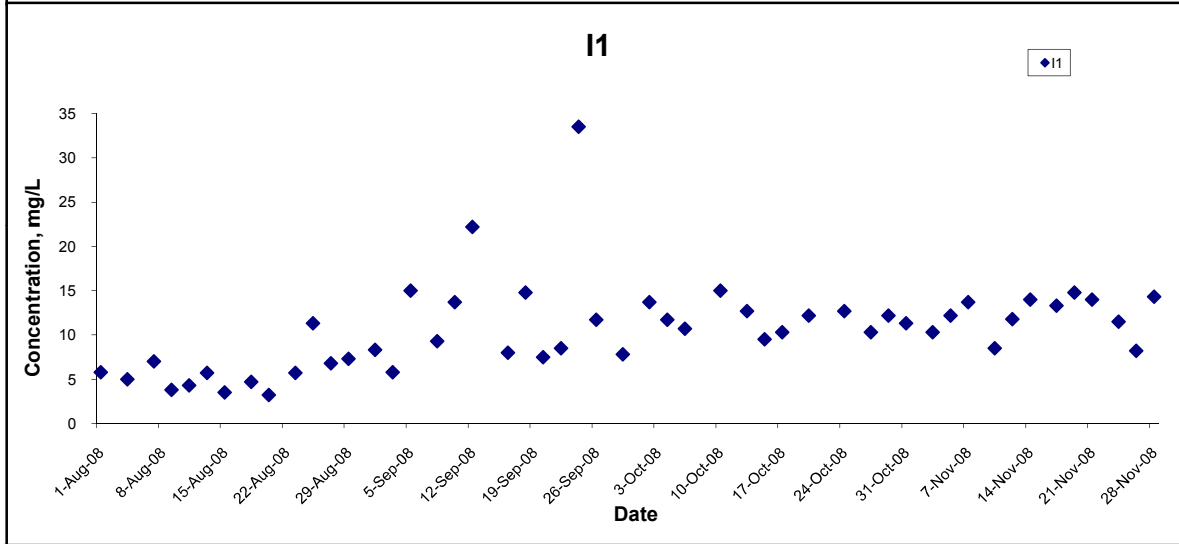
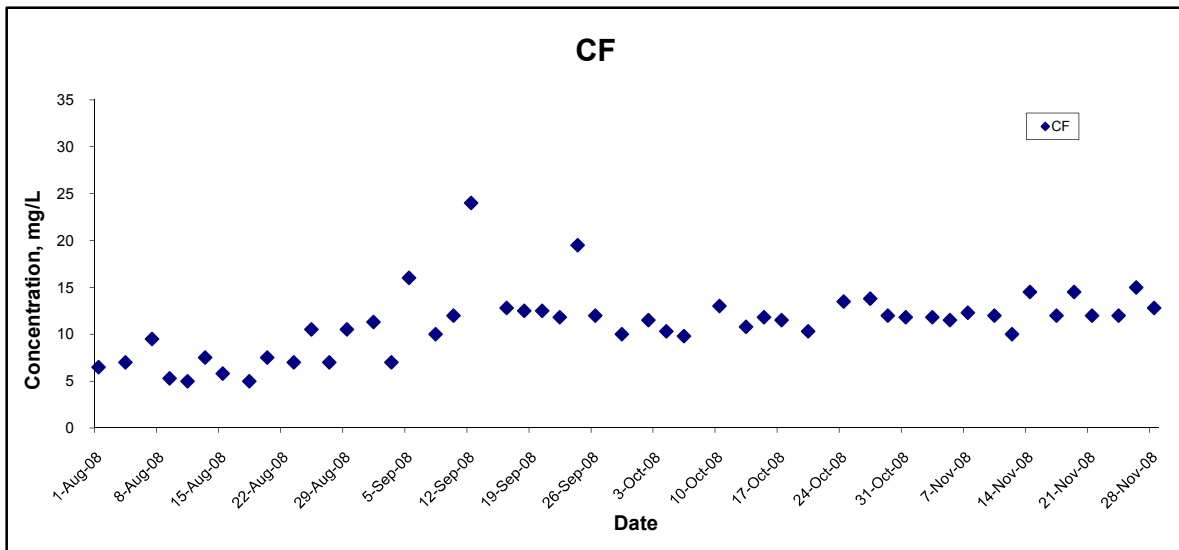
Title Contract No. DC/2007/10 Design and Construction of Hong Kong West Drainage Tunnel Graphical Presentation of Water Quality Monitoring Results	Scale N.T.S	Project No. MA8001	
	Date Nov 08	Appendix H	

Suspended Solids (Depth-averaged) at Mid-Ebb Tide



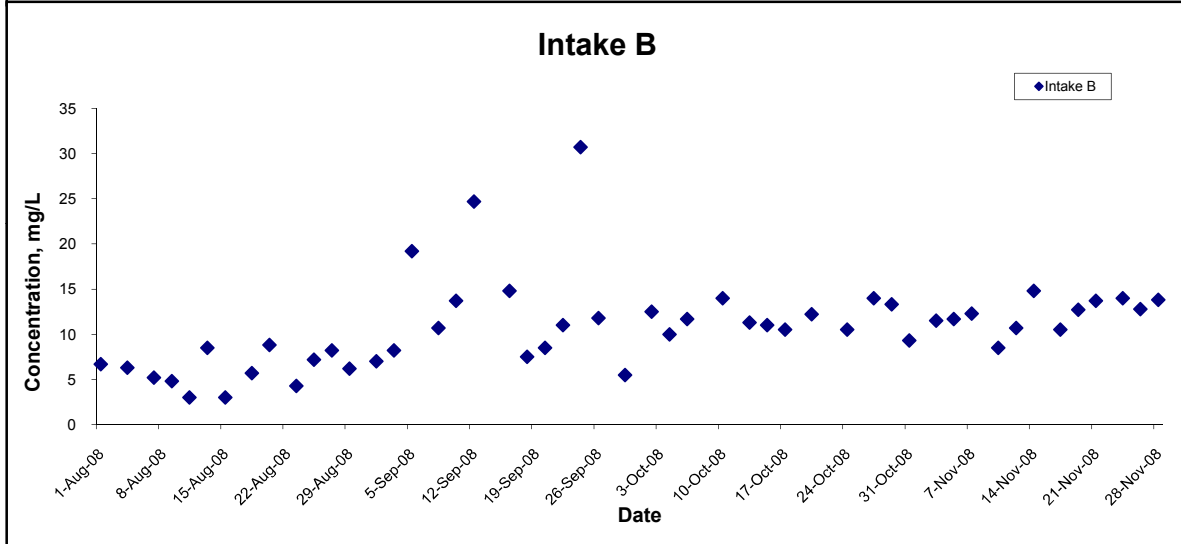
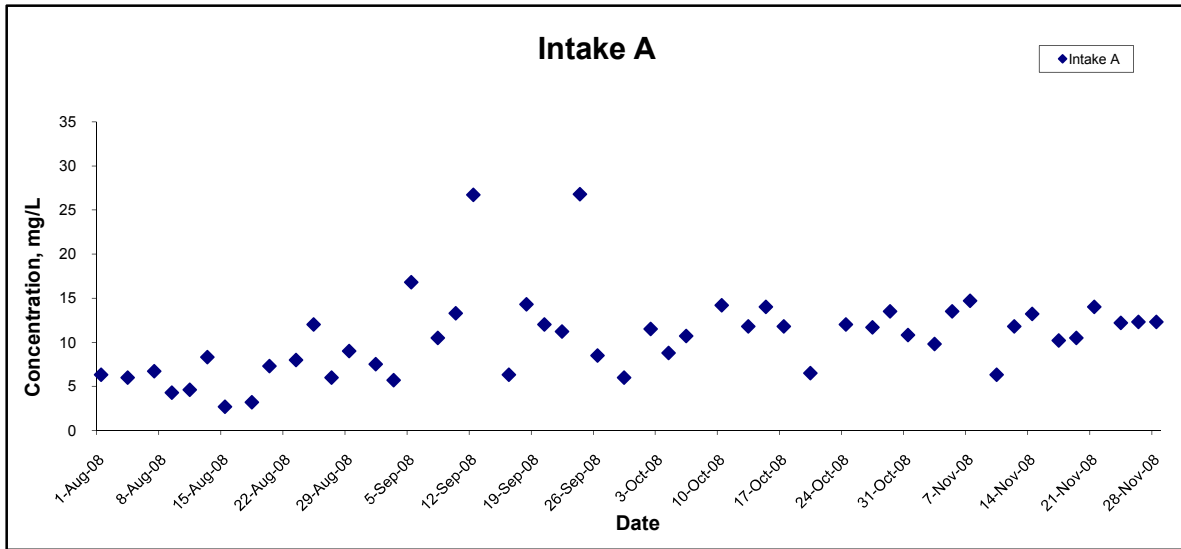
Title Contract No. DC/2007/10 Design and Construction of Hong Kong West Drainage Tunnel Graphical Presentation of Water Quality Monitoring Results	Scale N.T.S	Project No. MA8001	
	Date Nov 08	Appendix H	

Suspended Solids (Depth-averaged) at Mid-Flood Tide



Title Contract No. DC/2007/10 Design and Construction of Hong Kong West Drainage Tunnel Graphical Presentation of Water Quality Monitoring Results	Scale N.T.S	Project No. MA8001	
	Date Nov 08	Appendix H	

Suspended Solids (Depth-averaged) at Mid-Flood Tide



Title Contract No. DC/2007/10 Design and Construction of Hong Kong West Drainage Tunnel Graphical Presentation of Water Quality Monitoring Results	Scale N.T.S	Project No. MA8001	
	Date Nov 08	Appendix H	