

### Water Quality Monitoring Results at CE - Mid-Ebb Tide

Date	Weather Condition	Sea Condition**	Sampling Time	Depth (m)		Water Temperature (°C)		pH		Salinity ppt		DO Saturation (%)		Dissolved Oxygen (mg/L)			Turbidity (NTU)			Suspended Solids (mg/L)					
						Value	Average	Value	Average	Value	Average	Value	Average	Value	Average	DA*	Value	Average	DA*	Value	Average	DA*			
2-May-12	Cloudy	Calm	10:40	Surface	1	27.2 27.2	27.2	8.0 8.0	8.0	26.6 26.6	26.6	101.3 99.2	100.3	8.4 8.2	8.3	8.4	4.4 4.6	4.5	4.6	4.0 4.0	6.0	6.0			
				Middle	5	26.7 26.7	26.7	8.1 8.1	8.1	26.8 26.8	26.8	103.8 98.4	101.1	8.6 8.1	8.4		4.0 4.0	4.0		4.0 4.0			6.0 6.0		
				Bottom	9	26.5 26.6	26.6	8.1 8.1	8.1	27.0 26.9	27.0	101.5 98.6	100.1	8.4 8.2	8.3		8.3	5.3 5.3		5.3			5.3 5.3	8.0 8.0	8.0
4-May-12	Rainy	Calm	11:40	Surface	1	27.4 27.4	27.4	8.0 8.0	8.0	27.6 27.6	27.6	100.5 96.5	98.5	8.3 8.0	8.2	8.2	6.3 6.5	6.4	6.5	12.0 12.0	10.0	10.0			
				Middle	5	26.9 26.9	26.9	8.1 8.1	8.1	27.9 27.9	27.9	98.1 96.6	97.4	8.1 8.0	8.1		8.1	5.9 5.9		5.9			5.9 5.9	11.0 10.0	10.5
				Bottom	9	26.8 26.8	26.8	8.1 8.1	8.1	28.0 28.0	28.0	101.3 102.1	101.7	8.4 8.4	8.4		8.4	7.2 7.2		7.2			7.2 7.2	7.0 8.0	7.5
7-May-12	Sunny	Calm	13:55	Surface	1	28.0 28.0	28.0	8.0 8.0	8.0	25.3 25.4	25.4	102.6 97.3	100.0	8.5 8.1	8.3	8.3	6.6 6.8	6.7	6.8	5.0 5.0	6.2	6.2			
				Middle	5.5	27.5 27.5	27.5	8.0 8.0	8.0	25.6 25.6	25.6	97.8 99.4	98.6	8.1 8.2	8.2		8.2	6.2 6.2		6.2			6.2 6.2	7.0 6.0	6.5
				Bottom	10	27.4 27.4	27.4	8.1 8.1	8.1	25.7 25.7	25.7	96.8 98.8	97.8	8.0 8.2	8.1		8.1	7.5 7.5		7.5			7.5 7.5	7.0 7.0	7.0
9-May-12	Sunny	Calm	15:37	Surface	1	26.0 26.0	26.0	7.9 8.9	8.4	33.9 34.1	34.0	105.7 98.5	102.1	7.8 7.1	7.5	7.5	2.2 2.6	2.4	3.0	5.0 5.0	5.2	5.2			
				Middle	5.5	25.7 26.0	25.9	8.8 8.3	8.6	34.1 34.0	34.1	97.4 105.5	101.5	7.1 7.6	7.4		7.4	2.8 2.9		2.9			2.9 2.9	4.0 5.0	4.5
				Bottom	10	25.9 25.7	25.8	8.6 7.6	8.1	34.1 33.9	34.0	102.1 102.4	102.3	7.3 7.6	7.5		7.5	3.5 3.7		3.6			3.6 3.6	6.0 6.0	6.0
11-May-12	Fine	Calm	16:04	Surface	1	27.0 27.0	27.0	8.0 8.0	8.0	21.0 21.0	21.0	102.6 102.9	102.8	8.4 8.4	8.4	8.5	2.1 2.0	2.1	2.9	8.0 9.0	7.0	7.0			
				Middle	5	26.9 26.8	26.9	8.0 8.0	8.0	21.1 21.1	21.1	103.4 103.3	103.4	8.5 8.5	8.5		8.5	2.8 2.8		2.8			2.8 2.8	8.0 8.0	8.0
				Bottom	9	26.6 26.6	26.6	8.0 8.0	8.0	21.2 21.2	21.2	101.9 101.7	101.8	8.4 8.4	8.4		8.4	3.7 3.9		3.8			3.8 3.8	4.0 5.0	4.5
14-May-12	Fine	Calm	09:10	Surface	1	28.2 28.2	28.2	8.0 8.0	8.0	25.3 25.3	25.3	99.7 101.0	100.4	8.3 8.4	8.4	8.5	6.4 6.6	6.5	6.6	11.0 12.0	11.5	11.5			
				Middle	5	27.7 27.7	27.7	8.1 8.1	8.1	25.6 25.6	25.6	100.7 104.4	102.6	8.3 8.6	8.5		8.5	6.0 6.0		6.0			6.0 6.0	9.0 10.0	9.5
				Bottom	9	27.6 27.6	27.6	8.1 8.1	8.1	25.7 25.7	25.7	101.6 99.8	100.7	8.4 8.3	8.4		8.4	7.3 7.3		7.3			7.3 7.3	14.0 13.0	13.5
16-May-12	Cloudy	Calm	10:44	Surface	1	25.9 25.8	25.9	9.1 7.9	8.5	34.1 34.2	34.2	98.7 105.7	102.2	7.2 7.6	7.4	7.4	2.3 2.4	2.4	2.9	4.0 4.0	5.3	5.3			
				Middle	5	25.8 25.7	25.8	8.8 8.1	8.5	34.1 33.9	34.0	97.2 105.4	101.3	7.0 7.7	7.4		7.4	3.1 3.1		3.1			3.1 3.1	9.0 9.0	9.0
				Bottom	9	25.8 25.8	25.8	8.5 7.8	8.2	33.9 34.1	34.0	102.1 102.4	102.3	7.5 7.5	7.5		7.5	3.1 3.3		3.2			3.2 3.2	3.0 3.0	3.0
18-May-12	Rainy	Calm	12:10	Surface	1	28.0 28.0	28.0	8.0 8.0	8.0	25.2 25.2	25.2	100.0 99.2	99.6	8.3 8.2	8.3	8.3	5.6 5.8	5.7	5.8	8.0 8.0	6.2	6.2			
				Middle	5.5	27.6 27.6	27.6	8.1 8.1	8.1	25.5 25.5	25.5	99.8 99.2	99.5	8.3 8.2	8.3		8.3	5.2 5.2		5.2			5.2 5.2	7.0 6.0	6.5
				Bottom	10	27.4 27.4	27.4	8.1 8.1	8.1	25.6 25.6	25.6	102.7 99.9	101.3	8.5 8.3	8.4		8.4	6.5 6.5		6.5			6.5 6.5	4.0 4.0	4.0
21-May-12	Fine	Calm	13:32	Surface	1	26.0 25.8	25.9	9.1 8.0	8.6	34.0 34.1	34.1	98.5 105.7	102.1	7.1 7.8	7.5	7.4	2.1 2.1	2.1	3.0	6.0 5.0	5.2	5.2			
				Middle	5	25.9 25.9	25.9	8.7 8.2	8.5	34.1 34.1	34.1	97.2 105.4	101.3	7.0 7.6	7.3		7.3	2.8 2.9		2.9			2.9 2.9	6.0 6.0	6.0
				Bottom	9	25.8 25.7	25.8	8.7 7.8	8.3	34.2 34.1	34.2	102.0 102.3	102.2	7.3 7.3	7.3		7.3	3.9 3.8		3.9			3.9 3.8	4.0 4.0	4.0

### Water Quality Monitoring Results at CE - Mid-Ebb Tide

Date	Weather Condition	Sea Condition**	Sampling Time	Depth (m)		Water Temperature (°C)		pH		Salinity ppt		DO Saturation (%)		Dissolved Oxygen (mg/L)			Turbidity(NTU)			Suspended Solids (mg/L)			
						Value	Average	Value	Average	Value	Average	Value	Average	Value	Average	DA*	Value	Average	DA*	Value	Average	DA*	
23-May-12	Sunny	Calm	14:26	Surface	1	28.2 28.2	28.2	8.0 8.0	8.0	25.5 25.5	25.5	103.7 103.0	103.4	8.6 8.5	8.6	8.5	6.0 6.2	6.1	6.2	3.0 4.0	3.5	5.3	
				Middle	5	27.7 27.7	27.7	8.0 8.0	8.0	25.7 25.7	25.7	99.8 101.7	100.8	8.3 8.4	8.4		5.6 5.6	5.6		5.0 5.0	5.0		
				Bottom	9	27.6 27.6	27.6	8.1 8.1	8.1	25.9 25.8	25.9	103.7 99.6	101.7	8.6 8.2	8.4		8.4	6.9 6.9		6.9	6.9 8.0		7.5
25-May-12	Fine	Calm	15:50	Surface	1	26.7 26.8	26.8	8.9 7.8	8.4	34.0 33.9	34.0	98.5 105.7	102.1	7.1 7.6	7.4	7.4	2.5 2.6	2.6	3.3	7.0 7.0	7.0	6.3	
				Middle	5.5	27.0 26.8	26.9	8.7 8.1	8.4	34.1 34.0	34.1	97.4 105.3	101.4	7.0 7.5	7.3		7.4	3.3 3.1		3.2	7.0 6.0		6.5
				Bottom	10	26.9 26.7	26.8	8.4 7.8	8.1	33.9 34.1	34.0	102.0 102.4	102.2	7.4 7.3	7.4		7.4	4.1 4.2		4.2	5.0 6.0		5.5
28-May-12	Cloudy	Calm	17:34	Surface	1	27.3 27.3	27.3	7.8 7.8	7.8	29.5 29.5	29.5	83.9 83.0	83.5	6.9 6.9	6.9	7.1	4.2 4.4	4.3	4.4	4.0 4.0	4.0	6.3	
				Middle	4.5	26.9 26.9	26.9	7.9 7.9	7.9	29.8 29.8	29.8	86.1 86.6	86.4	7.1 7.2	7.2		7.4	3.8 3.8		3.8	9.0 9.0		9.0
				Bottom	8	26.7 26.7	26.7	7.9 7.9	7.9	29.9 29.9	29.9	88.0 89.7	88.9	7.3 7.4	7.4		7.4	5.0 4.9		5.0	6.0 6.0		6.0
30-May-12	Fine	Calm	09:10	Surface	1	28.1 28.1	28.1	8.0 8.0	8.0	26.9 26.9	26.9	100.2 99.3	99.8	8.3 8.2	8.3	8.3	4.6 4.8	4.7	4.8	6.0 6.0	6.0	7.2	
				Middle	5	27.6 27.6	27.6	8.1 8.1	8.1	27.1 27.1	27.1	99.3 101.5	100.4	8.2 8.4	8.3		7.4	4.2 4.2		4.2	9.0 8.0		8.5
				Bottom	9	27.5 27.5	27.5	8.1 8.1	8.1	27.3 27.2	27.3	102.1 97.5	99.8	8.4 8.1	8.3		8.3	5.5 5.5		5.5	7.0 7.0		7.0

Remarks: \* DA: Depth-Averaged  
 \*\* Calm: Small or no wave; Moderate: Between calm and rough; Rough : White capped or rougher

### Water Quality Monitoring Results at CF - Mid-Flood Tide

Date	Weather Condition	Sea Condition**	Sampling Time	Depth (m)		Water Temperature (°C)		pH		Salinity ppt		DO Saturation (%)		Dissolved Oxygen (mg/L)			Turbidity(NTU)			Suspended Solids (mg/L)		
						Value	Average	Value	Average	Value	Average	Value	Average	Value	Average	DA*	Value	Average	DA*	Value	Average	DA*
2-May-12	Cloudy	Calm	15:02	Surface	1	27.1 27.1	27.1	8.0 8.0	8.0	26.7 26.7	26.7	99.1 100.7	99.9	8.2 8.3	8.3	8.4	2.9 2.8	2.9	3.5	7.0 6.0	6.5	6.0
				Middle	3.5	27.0 28.9	27.0	8.0 8.0	8.0	26.7 26.7	26.7	101.5 101.8	101.7	8.4 8.4	8.4		3.0 3.1	3.1		4.0 4.0	4.0	
				Bottom	6	26.7 26.6	26.7	8.0 8.0	8.0	26.8 26.8	26.8	102.0 100.0	101.0	8.4 8.3	8.4		4.5 4.7	4.6		7.0 8.0	7.5	
4-May-12	Rainy	Calm	16:02	Surface	1	27.3 27.3	27.3	7.9 7.9	7.9	27.7 27.7	27.7	95.7 100.2	98.0	7.9 8.3	8.1	8.2	4.8 4.7	4.8	5.4	11.0 11.0	11.0	11.3
				Middle	3.5	27.2 27.1	27.2	7.9 7.9	7.9	27.8 27.8	27.8	99.1 99.8	99.5	8.2 8.3	8.3		4.9 5.0	5.0		15.0 15.0	15.0	
				Bottom	6	26.9 26.9	26.9	7.9 7.9	7.9	27.9 27.9	27.9	101.6 102.3	102.0	8.4 8.5	8.5		6.4 6.6	6.5		8.0 8.0	8.0	
9-May-12	Sunny	Calm	08:00	Surface	1	25.7 25.9	25.8	8.2 8.5	8.4	33.4 33.6	33.5	108.9 108.2	108.6	7.9 7.8	7.9	7.9	1.5 1.5	1.5	2.3	5.0 6.0	5.5	5.2
				Middle	3.5	25.8 25.9	25.9	8.6 8.8	8.7	33.3 33.7	33.5	110.4 102.7	106.6	7.9 7.6	7.8		2.5 2.6	2.6		5.0 5.0	5.0	
				Bottom	6	25.9 25.8	25.9	8.6 8.9	8.8	33.5 33.7	33.6	108.3 102.6	105.5	7.7 7.5	7.6		2.9 2.9	2.9		5.0 5.0	5.0	
11-May-12	Fine	Calm	10:28	Surface	1	27.1 27.1	27.1	8.1 8.1	8.1	20.9 20.9	20.9	92.2 91.9	92.1	7.5 7.5	7.5	7.6	3.6 3.8	3.7	3.8	8.0 8.0	8.0	8.3
				Middle	3.5	26.6 26.6	26.6	8.1 8.1	8.1	21.2 21.2	21.2	93.0 93.3	93.2	7.6 7.7	7.7		3.2 3.2	3.2		10.0 9.0	9.5	
				Bottom	6	26.5 26.5	26.5	8.2 8.2	8.2	21.3 21.3	21.3	94.9 95.0	95.0	7.8 7.8	7.8		4.5 4.5	4.5		8.0 7.0	7.5	
14-May-12	Fine	Calm	13:32	Surface	1	28.1 28.1	28.1	8.0 8.0	8.0	25.4 25.4	25.4	100.2 97.6	98.9	8.3 8.1	8.2	8.3	4.9 4.8	4.9	5.5	12.0 11.0	11.5	10.7
				Middle	3.5	28.0 27.9	28.0	8.0 8.0	8.0	25.5 25.5	25.5	102.6 97.2	99.9	8.5 8.0	8.3		5.0 5.1	5.1		10.0 9.0	9.5	
				Bottom	6	27.7 27.7	27.7	8.0 8.0	8.0	25.6 25.6	25.6	103.8 99.6	101.7	8.6 8.2	8.4		6.5 6.7	6.6		11.0 11.0	11.0	
16-May-12	Cloudy	Calm	16:06	Surface	1	25.9 25.8	25.9	8.0 8.7	8.4	33.2 33.8	33.5	115.0 114.1	114.6	8.4 8.5	8.5	8.4	1.5 1.5	1.5	2.1	6.0 6.0	6.0	5.8
				Middle	3.5	25.7 25.7	25.7	8.5 9.0	8.8	33.4 33.8	33.6	116.6 108.8	112.7	8.5 8.1	8.3		2.1 2.1	2.1		5.0 6.0	5.5	
				Bottom	6	25.8 25.7	25.8	8.9 8.5	8.7	33.6 33.5	33.6	108.6 114.2	111.4	7.9 8.4	8.2		2.6 2.6	2.6		6.0 6.0	6.0	
18-May-12	Rainy	Calm	16:32	Surface	1	28.0 28.0	28.0	7.9 7.9	7.9	25.3 25.3	25.3	101.9 100.1	101.0	8.4 8.3	8.4	8.3	4.1 4.0	4.1	4.7	4.0 4.0	4.0	5.0
				Middle	3.5	27.8 27.8	27.8	7.9 7.9	7.9	25.3 25.3	25.3	99.1 97.3	98.2	8.2 8.1	8.2		4.2 4.3	4.3		5.0 5.0	5.0	
				Bottom	6	27.5 27.5	27.5	7.9 7.9	7.9	25.4 25.4	25.4	100.3 101.2	100.8	8.3 8.4	8.4		5.7 5.9	5.8		6.0 6.0	6.0	
25-May-12	Fine	Calm	08:01	Surface	1	26.7 26.7	26.7	8.1 8.6	8.4	33.3 33.7	33.5	104.8 104.3	104.6	7.4 7.2	7.3	7.3	2.5 2.5	2.5	3.1	5.0 5.0	5.0	5.7
				Middle	3.5	26.7 26.7	26.7	8.6 9.0	8.8	33.4 33.7	33.6	106.6 98.6	102.6	7.4 6.9	7.2		3.2 3.3	3.3		5.0 4.0	4.5	
				Bottom	6	26.8 26.7	26.8	8.8 8.7	8.8	33.7 33.7	33.7	98.7 104.1	101.4	7.0 7.4	7.2		3.4 3.6	3.5		7.0 8.0	7.5	
28-May-12	Cloudy	Calm	09:42	Surface	1	27.3 27.3	27.3	7.8 7.8	7.8	29.6 29.6	29.6	93.2 94.7	94.0	7.7 7.8	7.8	8.0	3.3 3.3	3.3	3.9	3.0 3.0	3.0	5.2
				Middle	4	27.1 27.1	27.1	7.8 7.8	7.8	29.6 29.6	29.6	101.0 97.0	99.0	8.4 8.0	8.2		3.6 3.7	3.7		6.0 7.0	6.5	
				Bottom	7	26.9 26.8	26.9	7.8 7.8	7.8	29.7 29.7	29.7	95.5 93.2	94.4	7.9 7.7	7.8		4.8 4.8	4.8		6.0 6.0	6.0	
30-May-12	Fine	Calm	13:31	Surface	1	28.0 28.0	28.0	8.0 8.0	8.0	27.0 27.0	27.0	96.0 98.2	97.1	7.9 8.1	8.0	8.2	3.1 3.0	3.1	3.7	4.0 4.0	4.0	4.5
				Middle	3.5	27.9 27.8	27.9	8.0 8.0	8.0	27.0 27.0	27.0	101.3 101.6	101.5	8.4 8.4	8.4		3.2 3.3	3.3		4.0 5.0	4.5	
				Bottom	6	27.6 27.6	27.6	8.0 8.0	8.0	27.1 27.1	27.1	96.1 99.8	98.0	8.0 8.3	8.2		4.7 4.9	4.8		5.0 5.0	5.0	

Remarks: \* DA: Depth-Averaged  
 \*\* Calm: Small or no wave; Moderate: Between calm and rough; Rough : White capped or rougher

### Water Quality Monitoring Results at I1 - Mid-Ebb Tide

Date	Weather Condition	Sea Condition**	Sampling Time	Depth (m)		Water Temperature (°C)		pH		Salinity ppt		DO Saturation (%)		Dissolved Oxygen (mg/L)			Turbidity (NTU)			Suspended Solids (mg/L)		
						Value	Average	Value	Average	Value	Average	Value	Average	Value	Average	DA*	Value	Average	DA*	Value	Average	DA*
2-May-12	Cloudy	Calm	10:00	Surface	1	27.0 27.0	27.0	8.1 8.1	8.1	26.7 26.7	26.7	96.6 99.9	98.3	8.0 8.3	8.2	8.3	4.8 4.6	4.7	4.4	2.5 2.5	2.5	3.8
				Middle	4.5	26.8 26.8	26.8	8.1 8.1	8.1	26.8 101.4	26.8	98.3 101.4	99.9	8.1 8.4	8.3		3.9 4.5	4.2		6.0 6.0	6.0	
				Bottom	8	26.8 26.8	26.8	8.1 8.1	8.1	26.8 101.1	26.8	101.9 101.1	101.5	8.4 8.4	8.4		4.5 4.3	4.4		3.0 3.0	3.0	
4-May-12	Rainy	Calm	11:01	Surface	1	27.2 27.2	27.2	8.1 8.1	8.1	27.7 27.7	27.7	101.4 100.7	101.1	8.4 8.3	8.4	8.5	6.7 6.5	6.6	6.3	9.0 9.0	9.0	10.7
				Middle	4.5	27.1 27.1	27.1	8.1 8.1	8.1	27.9 27.9	27.9	102.0 103.2	102.6	8.4 8.5	8.5		5.8 6.4	6.1		13.0 12.0	12.5	
				Bottom	8	27.0 27.0	27.0	8.1 8.1	8.1	27.9 27.9	27.9	101.6 96.9	99.3	8.4 8.0	8.2		6.4 6.2	6.3		11.0 10.0	10.5	
7-May-12	Sunny	Calm	13:16	Surface	1	27.8 27.8	27.8	8.1 8.1	8.1	25.5 25.5	25.5	101.8 97.1	99.5	8.4 8.0	8.2	8.3	7.0 6.8	6.9	6.6	5.0 6.0	5.5	5.0
				Middle	4.5	27.7 27.7	27.7	8.0 8.0	8.0	25.6 25.6	25.6	100.3 99.2	99.8	8.3 8.2	8.3		6.1 6.7	6.4		3.0 3.0	3.0	
				Bottom	8	27.6 27.6	27.6	8.0 8.0	8.0	25.6 25.6	25.6	102.2 96.1	99.2	8.5 8.0	8.3		6.7 6.5	6.6		7.0 6.0	6.5	
9-May-12	Sunny	Calm	15:09	Surface	1	25.9 25.8	25.9	8.4 8.8	8.6	34.0 33.9	34.0	91.0 94.9	93.0	6.6 6.7	6.7	6.6	2.5 2.7	2.6	3.0	3.0 3.0	3.0	3.8
				Middle	4.5	25.7 25.9	25.8	7.6 7.7	7.7	34.0 34.0	34.0	90.7 86.0	88.4	6.7 6.3	6.5		2.9 3.0	3.0		3.0 3.0	3.0	
				Bottom	8	25.8 25.9	25.9	8.9 8.7	8.8	34.1 33.9	34.0	96.3 95.1	95.7	7.1 7.0	7.1		3.3 3.5	3.4		6.0 5.0	5.5	
11-May-12	Fine	Calm	16:48	Surface	1	26.8 26.8	26.8	8.2 8.2	8.2	21.1 21.1	21.1	98.9 98.8	98.9	8.1 8.1	8.1	8.1	3.1 3.1	3.1	3.3	6.0 6.0	6.0	5.3
				Middle	4.5	26.7 26.7	26.7	8.2 8.2	8.2	21.2 21.2	21.2	98.6 98.5	98.6	8.1 8.1	8.1		3.1 3.1	3.1		6.0 6.0	6.0	
				Bottom	8	26.7 26.7	26.7	8.2 8.2	8.2	21.2 21.2	21.2	98.3 98.2	98.3	8.0 8.0	8.0		3.7 3.6	3.7		4.0 4.0	4.0	
14-May-12	Fine	Calm	08:31	Surface	1	28.0 28.0	28.0	8.1 8.1	8.1	25.4 25.4	25.4	97.4 101.3	99.4	8.1 8.4	8.3	8.5	6.8 6.6	6.7	6.4	11.0 11.0	11.0	10.0
				Middle	4.5	27.9 27.9	27.9	8.1 8.1	8.1	25.6 25.6	25.6	103.7 103.6	103.7	8.6 8.6	8.6		5.9 6.5	6.2		10.0 10.0	10.0	
				Bottom	8	27.8 27.8	27.8	8.1 8.1	8.1	25.6 25.6	25.6	98.3 100.3	99.3	8.1 8.3	8.2		6.5 6.3	6.4		9.0 9.0	9.0	
16-May-12	Cloudy	Calm	10:16	Surface	1	25.9 26.0	26.0	8.4 8.9	8.7	34.0 33.9	34.0	91.0 94.8	92.9	6.5 6.9	6.7	6.5	2.3 2.4	2.4	2.9	11.0 11.0	11.0	6.3
				Middle	4	25.8 25.9	25.9	7.7 7.6	7.7	34.1 34.1	34.1	90.7 86.0	88.4	6.4 6.1	6.3		2.9 2.8	2.9		5.0 5.0	5.0	
				Bottom	7	25.9 25.9	25.9	9.0 8.6	8.8	34.0 33.9	34.0	96.2 95.2	95.7	7.0 6.9	7.0		3.3 3.3	3.3		3.0 3.0	3.0	
18-May-12	Rainy	Calm	11:31	Surface	1	27.9 27.9	27.9	8.1 8.1	8.1	25.3 25.3	25.3	99.0 98.5	98.8	8.2 8.1	8.2	8.3	6.0 5.8	5.9	5.6	3.0 4.0	3.5	5.0
				Middle	4.5	27.7 27.7	27.7	8.1 8.1	8.1	25.4 25.4	25.4	100.9 100.1	100.5	8.4 8.3	8.4		5.1 5.7	5.4		6.0 6.0	6.0	
				Bottom	8	27.7 27.7	27.7	8.1 8.1	8.1	25.5 25.5	25.5	101.4 104.7	103.1	8.4 8.7	8.6		5.7 5.5	5.6		6.0 5.0	5.5	
21-May-12	Fine	Calm	13:04	Surface	1	25.8 25.8	25.8	8.3 8.9	8.6	34.1 33.9	34.0	91.2 94.7	93.0	6.6 6.8	6.7	6.6	2.1 2.2	2.2	2.9	6.0 5.0	5.5	4.5
				Middle	4.5	25.9 25.9	25.9	7.7 7.6	7.7	33.8 34.1	34.0	90.7 86.0	88.4	6.6 6.3	6.5		3.0 3.2	3.1		4.0 5.0	4.5	
				Bottom	8	25.9 25.8	25.9	8.9 8.7	8.8	34.0 33.9	34.0	96.3 95.2	95.8	6.9 7.0	7.0		3.2 3.3	3.3		3.0 4.0	3.5	

## Water Quality Monitoring Results at I1 - Mid-Ebb Tide

Date	Weather Condition	Sea Condition**	Sampling Time	Depth (m)		Water Temperature (°C)		pH		Salinity ppt		DO Saturation (%)		Dissolved Oxygen (mg/L)			Turbidity (NTU)			Suspended Solids (mg/L)		
						Value	Average	Value	Average	Value	Average	Value	Average	Value	Average	DA*	Value	Average	DA*	Value	Average	DA*
23-May-12	Sunny	Calm	13:46	Surface	1	28.0 28.0	28.0	8.1 8.1	8.1	25.6 25.6	25.6	99.8 99.8	99.8	8.3 8.3	8.3	8.2	6.4 6.2	6.3	6.0	8.0 8.0	8.0	6.2
				Middle	4.5	27.9 27.9	27.9	8.1 8.1	8.1	25.7 25.7	25.7	97.1 98.4	97.8	8.0 8.1	8.1		5.5 6.1	5.8		7.0 7.0	7.0	
				Bottom	8	27.8 27.8	27.8	8.1 8.1	8.1	25.7 25.7	25.7	100.8 99.9	100.4	8.3 8.3	8.3		6.1 5.9	6.0		3.0 4.0	3.5	
25-May-12	Fine	Calm	15:22	Surface	1	26.8 26.9	26.9	8.6 8.9	8.8	34.0 34.1	34.1	91.1 94.8	93.0	6.7 6.8	6.8	6.7	3.2 3.2	3.2	3.6	8.0 8.0	8.0	6.8
				Middle	4.5	26.9 27.0	27.0	7.6 7.8	7.7	34.1 34.0	34.1	90.5 86.2	88.4	6.5 6.4	6.5		3.5 3.6	3.6		6.0 6.0	6.0	
				Bottom	8	26.7 26.9	26.8	9.0 8.7	8.9	33.9 34.1	34.0	96.3 95.1	95.7	6.9 6.8	6.9		4.0 4.0	4.0		6.0 7.0	6.5	
28-May-12	Cloudy	Calm	16:54	Surface	1	27.2 27.2	27.2	7.9 7.9	7.9	29.6 29.6	29.6	88.3 92.6	90.5	7.3 7.7	7.5	7.5	4.5 4.6	4.6	4.2	4.0 5.0	4.5	5.0
				Middle	4.5	27.0 27.0	27.0	7.9 7.9	7.9	29.8 29.8	29.8	87.7 92.4	90.1	7.3 7.6	7.5		3.6 4.2	3.9		6.0 6.0	6.0	
				Bottom	8	27.0 27.0	27.0	7.9 7.9	7.9	29.8 29.8	29.8	89.8 95.2	92.5	7.4 7.9	7.7		4.3 4.1	4.2		5.0 4.0	4.5	
30-May-12	Fine	Calm	08:30	Surface	1	27.9 27.9	27.9	8.1 8.1	8.1	27.0 27.0	27.0	99.9 98.4	99.2	8.3 8.1	8.2	8.3	5.0 4.8	4.9	4.6	5.0 5.0	5.0	5.2
				Middle	4.5	27.8 27.8	27.8	8.1 8.1	8.1	27.1 27.1	27.1	102.7 98.5	100.6	8.5 8.1	8.3		4.1 4.7	4.4		4.0 5.0	4.5	
				Bottom	8	27.7 27.7	27.7	8.1 8.1	8.1	27.1 27.1	27.1	103.0 100.2	101.6	8.5 8.3	8.4		4.7 4.5	4.6		6.0 6.0	6.0	

Remarks: \* DA: Depth-Averaged

\*\* Calm: Small or no wave; Moderate: Between calm and rough; Rough : White capped or rougher

### Water Quality Monitoring Results at I1 - Mid-Flood Tide

Date	Weather Condition	Sea Condition**	Sampling Time	Depth (m)		Water Temperature (°C)		pH		Salinity ppt		DO Saturation (%)		Dissolved Oxygen (mg/L)			Turbidity(NTU)			Suspended Solids (mg/L)		
						Value	Average	Value	Average	Value	Average	Value	Average	Value	Average	DA*	Value	Average	DA*	Value	Average	DA*
2-May-12	Cloudy	Calm	15:46	Surface	1	26.9 26.9	26.9	8.1 8.1	8.1	26.8 26.8	26.8	99.4 96.2	97.8	8.2 8.0	8.1	8.3	4.3 4.0	4.2	4.2	5.0 5.0	5.0	6.8
				Middle	4.5	26.8 26.8	26.8	8.1 8.1	8.1	26.8 26.8	26.8	102.9 98.9	100.9	8.5 8.2	8.4		3.9 3.9	3.9		9.0 10.0	9.5	
				Bottom	8	26.8 26.8	26.8	8.1 8.1	8.1	26.8 26.8	26.8	97.0 99.5	98.3	8.0 8.2	8.1		8.1	4.5 4.4		4.5	6.0 6.0	
4-May-12	Rainy	Calm	16:46	Surface	1	27.1 27.1	27.1	8.1 8.1	8.1	27.8 27.8	27.8	97.5 99.7	98.6	8.1 8.3	8.2	8.3	6.2 5.9	6.1	6.1	7.0 7.0	7.0	8.3
				Middle	4.5	27.0 27.0	27.0	8.1 8.1	8.1	27.9 27.9	27.9	99.0 102.2	100.6	8.2 8.5	8.4		5.8 5.8	5.8		10.0 10.0	10.0	
				Bottom	8	27.0 27.0	27.0	8.1 8.1	8.1	27.9 27.9	27.9	97.9 98.8	98.4	8.1 8.2	8.2		8.2	6.4 6.3		6.4	8.0 8.0	
9-May-12	Sunny	Calm	08:37	Surface	1	26.0 25.9	26.0	7.9 8.2	8.1	33.9 33.9	33.9	92.0 92.7	92.4	6.8 6.7	6.8	6.8	1.3 1.3	1.3	2.0	4.0 5.0	4.5	3.8
				Middle	4.5	26.0 25.8	25.9	8.2 8.6	8.4	34.0 34.1	34.1	91.7 94.8	93.3	6.6 6.8	6.7		1.8 2.0	1.9		4.0 4.0	4.0	
				Bottom	8	26.0 25.9	26.0	8.1 8.7	8.4	34.0 33.9	34.0	86.4 95.3	90.9	6.1 6.9	6.5		6.5	2.9 2.8		2.9	3.0 3.0	
11-May-12	Fine	Calm	09:49	Surface	1	26.9 26.9	26.9	8.2 8.2	8.2	21.0 21.0	21.0	98.7 98.8	98.8	8.1 8.1	8.1	8.1	4.0 3.8	3.9	3.6	7.0 7.0	7.0	9.0
				Middle	4.5	26.8 26.8	26.8	8.2 8.2	8.2	21.2 21.2	21.2	98.6 98.6	98.6	8.1 8.1	8.1		3.1 3.7	3.4		12.0 11.0	11.5	
				Bottom	8	26.7 26.7	26.7	8.2 8.2	8.2	21.2 21.2	21.2	98.4 98.3	98.4	8.1 8.0	8.1		8.1	3.7 3.5		3.6	9.0 8.0	
14-May-12	Fine	Calm	14:16	Surface	1	27.9 27.9	27.9	8.1 8.1	8.1	25.5 25.5	25.5	100.3 102.1	101.2	8.3 8.5	8.4	8.3	6.3 6.0	6.2	6.2	10.0 10.0	10.0	10.0
				Middle	4.5	27.8 27.8	27.8	8.1 8.1	8.1	25.6 25.6	25.6	100.3 96.0	98.2	8.3 7.9	8.1		5.9 5.9	5.9		12.0 11.0	11.5	
				Bottom	8	27.8 27.8	27.8	8.1 8.1	8.1	25.6 25.6	25.6	101.7 102.1	101.9	8.4 8.4	8.4		8.4	6.5 6.4		6.5	8.0 9.0	
16-May-12	Cloudy	Calm	16:43	Surface	1	25.9 25.7	25.8	8.1 8.2	8.2	33.9 34.1	34.0	91.8 92.8	92.3	6.6 6.8	6.7	6.7	1.3 1.4	1.4	1.8	4.0 5.0	4.5	6.2
				Middle	4	25.7 25.9	25.8	8.1 8.6	8.4	33.9 34.2	34.1	91.6 94.6	93.1	6.5 6.9	6.7		1.6 1.7	1.7		9.0 9.0	9.0	
				Bottom	7	25.9 25.7	25.8	8.2 8.7	8.5	33.9 34.1	34.0	86.4 95.3	90.9	6.3 6.8	6.6		6.6	2.2 2.3		2.3	5.0 5.0	
18-May-12	Rainy	Calm	17:16	Surface	1	27.8 27.8	27.8	8.1 8.1	8.1	25.4 25.4	25.4	101.1 100.2	100.7	8.4 8.3	8.4	8.4	5.5 5.2	5.4	5.4	4.0 4.0	4.0	5.8
				Middle	5	27.7 27.7	27.7	8.1 8.1	8.1	25.4 25.4	25.4	101.2 102.0	101.6	8.4 8.4	8.4		5.1 5.1	5.1		5.0 5.0	5.0	
				Bottom	9	27.7 27.7	27.7	8.1 8.1	8.1	25.5 25.5	25.5	100.0 102.2	101.1	8.3 8.5	8.4		8.4	5.7 5.6		5.7	8.0 9.0	
25-May-12	Fine	Calm	08:38	Surface	1	26.9 26.7	26.8	8.0 8.2	8.1	34.0 33.9	34.0	92.0 92.8	92.4	6.5 6.8	6.7	6.7	2.2 2.2	2.2	3.0	5.0 4.0	4.5	4.3
				Middle	4.5	26.8 26.9	26.9	8.2 8.7	8.5	33.9 34.1	34.0	91.6 94.7	93.2	6.5 6.8	6.7		2.7 2.7	2.7		4.0 5.0	4.5	
				Bottom	8	26.8 26.7	26.8	8.2 8.7	8.5	34.1 33.9	34.0	86.2 95.2	90.7	6.1 6.9	6.5		6.5	3.9 4.0		4.0	4.0 4.0	
28-May-12	Cloudy	Calm	10:27	Surface	1	27.1 27.1	27.1	7.9 7.9	7.9	29.7 29.7	29.7	91.2 90.4	90.8	7.5 7.5	7.5	7.6	4.1 4.1	4.1	4.2	6.0 7.0	6.5	4.7
				Middle	4.5	27.0 27.0	27.0	7.9 7.9	7.9	29.8 29.8	29.8	91.1 92.1	91.6	7.5 7.6	7.6		3.9 3.9	3.9		4.0 5.0	4.5	
				Bottom	8	27.0 27.0	27.0	7.9 7.9	7.9	29.8 29.8	29.8	86.7 88.9	87.8	7.2 7.4	7.3		7.3	4.6 4.3		4.5	3.0 3.0	

### Water Quality Monitoring Results at I1 - Mid-Flood Tide

Date	Weather Condition	Sea Condition**	Sampling Time	Depth (m)		Water Temperature (°C)		pH		Salinity ppt		DO Saturation (%)		Dissolved Oxygen (mg/L)			Turbidity(NTU)			Suspended Solids (mg/L)		
						Value	Average	Value	Average	Value	Average	Value	Average	Value	Average	DA*	Value	Average	DA*	Value	Average	DA*
30-May-12	Fine	Calm	14:15	Surface	1	27.8	27.8	8.1	8.1	27.1	27.1	101.9	102.0	8.4	8.4	8.4	4.5	4.4	4.4	5.0	5.0	4.8
					27.8	27.8	8.1	8.1	27.1	27.1	102.1	8.4	8.4	4.2	4.4		5.0					
				Middle	4.5	27.7	27.7	8.1	8.1	27.1	27.1	99.4	101.1	8.2	8.4		4.1	4.1		6.0	6.0	
					27.7	27.7	8.1	8.1	27.1	27.1	102.7	8.5	8.4	4.1	4.1	6.0						
				Bottom	8	27.7	27.7	8.1	8.1	27.1	27.1	100.2	99.8	8.3	8.3	8.3	4.7	4.7		4.0	3.5	
					27.7	27.7	8.1	8.1	27.1	27.1	99.3	8.2	8.3	8.3	4.6	4.7	3.0	3.5				

Remarks: \* DA: Depth-Averaged  
 \*\* Calm: Small or no wave; Moderate: Between calm and rough; Rough : White capped or rougher

## Water Quality Monitoring Results at I2 - Mid-Ebb Tide

Date	Weather Condition	Sea Condition**	Sampling Time	Depth (m)		Water Temperature (°C)		pH		Salinity ppt		DO Saturation (%)		Dissolved Oxygen (mg/L)			Turbidity (NTU)			Suspended Solids (mg/L)			
						Value	Average	Value	Average	Value	Average	Value	Average	Value	Average	DA*	Value	Average	DA*	Value	Average	DA*	
2-May-12	Cloudy	Calm	09:48	Surface	1	26.9 26.9	26.9	8.1 8.1	8.1	26.8 26.8	26.8	100.3 100.4	100.4	8.3 8.3	8.3	8.4	3.9 3.8	3.9	3.7	6.0 6.0	6.0	6.7	
				Middle	4.5	26.9 26.9	26.9	8.1 8.1	8.1	26.8 26.8	26.8	101.2 101.0	101.1	8.4 8.4	8.4		3.8 3.7	3.8		6.0 6.0	6.0		
				Bottom	8	26.8 26.8	26.8	8.1 8.1	8.1	26.8 26.8	26.8	96.7 98.5	97.6	8.0 8.2	8.1		8.1	3.3 3.2		3.3	8.0 8.0		8.0
4-May-12	Rainy	Calm	10:48	Surface	1	27.1 27.1	27.1	8.0 8.0	8.0	27.8 27.8	27.8	100.8 100.9	100.9	8.3 8.3	8.3	8.3	5.8 5.7	5.8	5.6	8.0 8.0	8.0	7.2	
				Middle	4.5	27.1 27.1	27.1	8.0 8.0	8.0	27.8 27.8	27.8	101.2 99.7	100.5	8.4 8.2	8.3		5.7 5.6	5.7		8.0 8.0	8.0		
				Bottom	8	27.0 27.0	27.0	8.0 8.0	8.0	27.9 27.9	27.9	100.7 99.2	100.0	8.3 8.2	8.3		8.3	5.2 5.1		5.2	5.0 6.0		5.5
7-May-12	Sunny	Calm	13:03	Surface	1	27.7 27.7	27.7	8.0 8.0	8.0	25.6 25.6	25.6	99.5 98.3	98.9	8.2 8.1	8.2	8.2	6.1 6.0	6.1	5.9	6.0 7.0	6.5	6.7	
				Middle	4.5	27.7 27.7	27.7	8.0 8.0	8.0	25.6 25.6	25.6	98.4 97.0	97.7	8.1 8.0	8.1		6.0 5.9	6.0		8.0 8.0	8.0		
				Bottom	8	27.6 27.6	27.6	8.0 8.0	8.0	25.6 25.6	25.6	95.8 99.9	97.9	7.9 8.3	8.1		8.1	5.5 5.4		5.5	5.0 6.0		5.5
9-May-12	Sunny	Calm	14:59	Surface	1	25.8 26.0	25.9	8.1 8.2	8.2	33.9 34.0	34.0	90.1 93.6	91.9	6.4 6.7	6.6	6.7	1.0 1.1	1.1	1.6	6.0 6.0	6.0	4.2	
				Middle	4.5	25.9 25.8	25.9	8.6 8.4	8.5	33.8 33.9	33.9	93.4 88.0	90.7	6.8 6.5	6.7		1.5 1.6	1.6		3.0 3.0	3.0		
				Bottom	8	25.9 25.9	25.9	8.0 8.3	8.2	34.1 34.0	34.1	91.8 92.0	91.9	6.8 6.8	6.8		6.8	2.1 2.2		2.2	4.0 3.0		3.5
11-May-12	Fine	Calm	16:34	Surface	1	26.8 26.8	26.8	8.1 8.1	8.1	21.1 21.1	21.1	99.6 99.6	99.6	8.1 8.1	8.1	8.2	3.0 3.0	3.0	2.9	5.0 5.0	5.0	7.3	
				Middle	4.5	26.8 26.8	26.8	8.1 8.1	8.1	21.1 21.1	21.1	99.8 99.8	99.8	8.2 8.2	8.2		2.8 2.9	2.9		9.0 9.0	9.0		
				Bottom	8	26.7 26.6	26.7	8.1 8.1	8.1	21.2 21.2	21.2	99.8 99.6	99.7	8.2 8.2	8.2		8.2	2.8 2.9		2.9	8.0 8.0		8.0
14-May-12	Fine	Calm	08:18	Surface	1	27.9 27.9	27.9	8.1 8.1	8.1	25.5 25.5	25.5	103.8 103.5	103.7	8.6 8.6	8.6	8.6	5.9 5.8	5.9	5.7	10.0 9.0	9.5	12.3	
				Middle	4.5	27.9 27.9	27.9	8.1 8.1	8.1	25.5 25.5	25.5	103.8 99.9	101.9	8.6 8.3	8.5		5.8 5.7	5.8		19.0 18.0	18.5		
				Bottom	8	27.8 27.8	27.8	8.1 8.1	8.1	25.6 25.6	25.6	104.7 96.3	100.5	8.7 8.0	8.4		8.4	5.3 5.2		5.3	9.0 9.0		9.0
16-May-12	Cloudy	Calm	10:05	Surface	1	25.9 25.8	25.9	8.1 8.2	8.2	33.9 33.9	33.9	93.6 90.1	91.9	6.8 6.6	6.7	6.5	1.3 1.4	1.4	2.1	3.0 3.0	3.0	4.7	
				Middle	4	26.1 25.7	25.9	8.6 8.2	8.4	33.9 33.9	33.9	93.4 77.9	85.7	6.8 5.5	6.2		1.7 1.8	1.8		3.0 3.0	3.0		
				Bottom	7	25.8 25.8	25.8	7.8 8.4	8.1	34.1 34.1	34.1	91.8 88.9	90.4	6.8 6.7	6.8		6.8	3.0 2.9		3.0	8.0 8.0		8.0
18-May-12	Rainy	Calm	11:18	Surface	1	27.8 27.8	27.8	8.0 8.0	8.0	25.4 25.4	25.4	96.9 101.1	99.0	8.0 8.4	8.2	8.2	5.1 5.0	5.1	4.9	7.0 7.0	7.0	7.0	
				Middle	5	27.8 27.8	27.8	8.0 8.0	8.0	25.4 25.4	25.4	99.4 98.8	99.1	8.2 8.2	8.2		8.0	5.0 4.9		5.0	8.0 7.0		7.5
				Bottom	9	27.7 27.7	27.7	8.0 8.0	8.0	25.4 25.4	25.4	96.9 96.1	96.5	8.0 8.0	8.0		8.0	4.5 4.4		4.5	6.0 7.0		6.5
21-May-12	Fine	Calm	12:54	Surface	1	25.9 26.0	26.0	8.1 8.1	8.1	34.0 33.9	34.0	93.5 89.9	91.7	6.6 6.5	6.6	6.5	1.2 1.3	1.3	1.7	4.0 4.0	4.0	4.5	
				Middle	4.5	26.0 25.9	26.0	8.5 8.4	8.5	33.9 34.0	34.0	93.2 77.9	85.6	6.8 5.8	6.3		1.6 1.6	1.6		4.0 3.0	3.5		
				Bottom	8	25.8 25.7	25.8	7.8 8.5	8.2	34.0 34.0	34.0	91.7 74.7	83.2	6.7 5.5	6.1		6.1	2.0 2.2		2.1	6.0 6.0		6.0



## Water Quality Monitoring Results at I2 - Mid-Ebb Tide

Date	Weather Condition	Sea Condition**	Sampling Time	Depth (m)		Water Temperature (°C)		pH		Salinity ppt		DO Saturation (%)		Dissolved Oxygen (mg/L)			Turbidity (NTU)			Suspended Solids (mg/L)		
						Value	Average	Value	Average	Value	Average	Value	Average	Value	Average	DA*	Value	Average	DA*	Value	Average	DA*
23-May-12	Sunny	Calm	13:33	Surface	1	27.9 27.9	27.9	8.0 8.0	8.0	25.7 25.7	25.7	100.6 98.0	99.3	8.3 8.1	8.2	8.2	5.5 5.4	5.5	5.3	4.0 4.0	4.0	4.8
				Middle	5	27.9 27.9	27.9	8.0 8.0	8.0	25.7 25.7	25.7	96.4 101.3	98.9	8.0 8.4	8.2		5.4 5.3	5.4		5.0 4.0	4.5	
				Bottom	9	27.8 27.8	27.8	8.0 8.0	8.0	25.7 25.7	25.7	98.1 100.9	99.5	8.1 8.3	8.2		8.2	4.9 4.8		4.9	6.0 6.0	
25-May-12	Fine	Calm	15:11	Surface	1	26.8 26.9	26.9	8.0 8.2	8.1	34.0 34.0	34.0	93.7 90.0	91.9	6.8 6.5	6.7	6.8	2.3 2.3	2.3	3.0	6.0 6.0	6.0	5.3
				Middle	4.5	26.8 26.7	26.8	8.7 8.5	8.6	34.0 34.0	34.0	93.2 90.0	91.6	6.7 6.8	6.8		3.1 3.2	3.2		5.0 6.0	5.5	
				Bottom	8	26.9 26.9	26.9	7.8 8.4	8.1	33.9 34.1	34.0	91.6 86.6	89.1	6.7 6.4	6.6		6.6	3.5 3.5		3.5	4.0 5.0	
28-May-12	Cloudy	Calm	16:40	Surface	1	27.1 27.1	27.1	7.9 7.9	7.9	29.7 29.7	29.7	90.2 90.2	90.2	7.5 7.5	7.5	7.6	3.7 3.6	3.7	3.5	5.0 6.0	5.5	4.2
				Middle	4.5	27.1 27.1	27.1	7.9 7.9	7.9	29.7 29.7	29.7	94.6 88.8	91.7	7.8 7.3	7.6		3.7 3.6	3.7		4.0 4.0	4.0	
				Bottom	8	27.0 27.0	27.0	7.9 7.9	7.9	29.7 29.8	29.8	91.4 95.0	93.2	7.6 7.9	7.8		7.8	3.1 3.0		3.1	3.0 3.0	
30-May-12	Fine	Calm	08:17	Surface	1	27.8 27.8	27.8	8.1 8.1	8.1	27.1 27.1	27.1	96.4 102.0	99.2	8.0 8.4	8.2	8.2	4.1 4.0	4.1	3.9	6.0 7.0	6.5	5.7
				Middle	4.5	27.8 27.8	27.8	8.1 8.1	8.1	27.1 27.1	27.1	97.2 100.8	99.0	8.0 8.3	8.2		4.0 3.9	4.0		3.0 4.0	3.5	
				Bottom	8	27.7 27.7	27.7	8.1 8.1	8.1	27.1 27.1	27.1	103.7 97.4	100.6	8.6 8.1	8.4		8.4	3.5 3.4		3.5	7.0 7.0	

Remarks: \* DA: Depth-Averaged  
 \*\* Calm: Small or no wave; Moderate: Between calm and rough; Rough : White capped or rougher

### Water Quality Monitoring Results at I2 - Mid-Flood Tide

Date	Weather Condition	Sea Condition**	Sampling Time	Depth (m)		Water Temperature (°C)		pH		Salinity ppt		DO Saturation (%)		Dissolved Oxygen (mg/L)			Turbidity(NTU)			Suspended Solids (mg/L)		
						Value	Average	Value	Average	Value	Average	Value	Average	Value	Average	DA*	Value	Average	DA*	Value	Average	DA*
2-May-12	Cloudy	Calm	15:31	Surface	1	26.9 26.9	26.9	8.1 8.1	8.1	26.8 26.8	26.8	98.2 96.5	97.4	8.1 8.0	8.1	8.1	3.8 3.8	3.8	3.7	6.0 6.0	6.0	6.3
				Middle	4.5	26.8 26.9	26.9	8.1 8.1	8.1	26.8 26.8	26.8	98.1 96.1	97.1	8.1 8.0	8.1		3.6 3.7	3.7		7.0 6.0	6.5	
				Bottom	8	26.7 26.7	26.7	8.1 8.1	8.1	26.8 26.8	26.8	99.9 102.6	101.3	8.3 8.5	8.4		3.6 3.7	3.7		6.0 7.0	6.5	
4-May-12	Rainy	Calm	16:32	Surface	1	27.1 27.1	27.1	8.0 8.0	8.0	27.8 27.8	27.8	96.9 101.3	99.1	8.0 8.4	8.2	8.2	5.7 5.7	5.7	5.6	5.0 5.0	5.0	4.5
				Middle	4.5	27.1 27.1	27.1	8.0 8.0	8.0	27.8 27.8	27.8	101.3 97.1	99.2	8.4 8.0	8.2		5.5 5.6	5.6		3.0 4.0	3.5	
				Bottom	8	27.0 27.0	27.0	8.0 8.0	8.0	27.9 27.9	27.9	102.6 103.3	103.0	8.5 8.5	8.5		5.5 5.6	5.6		5.0 5.0	5.0	
9-May-12	Sunny	Calm	08:26	Surface	1	26.0 25.9	26.0	7.5 7.8	7.7	34.0 33.9	34.0	90.4 90.7	90.6	6.6 6.4	6.5	6.6	1.3 1.4	1.4	2.4	7.0 7.0	7.0	5.8
				Middle	4.5	25.8 25.9	25.9	8.2 8.5	8.4	34.0 33.9	34.0	90.4 92.7	91.6	6.6 6.6	6.6		2.6 2.8	2.7		7.0 6.0	6.5	
				Bottom	8	25.7 25.7	25.7	8.8 8.7	8.8	34.0 34.1	34.1	89.4 94.0	91.7	6.5 6.8	6.7		3.0 3.2	3.1		4.0 4.0	4.0	
11-May-12	Fine	Calm	09:36	Surface	1	26.8 26.8	26.8	8.1 8.1	8.1	21.1 21.1	21.1	99.8 99.8	99.8	8.2 8.2	8.2	8.2	3.1 3.0	3.1	2.9	11.0 11.0	11.0	9.7
				Middle	4.5	26.8 26.8	26.8	8.1 8.1	8.1	21.1 21.1	21.1	99.9 99.8	99.9	8.2 8.2	8.2		2.9 2.9	3.0		9.0 9.0	9.0	
				Bottom	8	26.7 26.7	26.7	8.1 8.1	8.1	21.2 21.2	21.2	99.9 100.0	100.0	8.2 8.2	8.2		2.5 2.4	2.5		9.0 9.0	9.0	
14-May-12	Fine	Calm	14:02	Surface	1	27.9 27.9	27.9	8.1 8.1	8.1	25.5 25.5	25.5	99.1 101.6	100.4	8.2 8.4	8.3	8.4	5.8 5.8	5.8	5.7	8.0 8.0	8.0	9.5
				Middle	4.5	27.9 27.9	27.9	8.1 8.1	8.1	25.5 25.5	25.5	99.9 102.5	101.2	8.3 8.5	8.4		5.6 5.7	5.7		9.0 8.0	8.5	
				Bottom	8	27.7 27.7	27.7	8.1 8.1	8.1	25.6 25.6	25.6	103.0 102.6	102.8	8.5 8.5	8.5		5.7 5.7	5.7		12.0 12.0	12.0	
16-May-12	Cloudy	Calm	16:33	Surface	1	26.0 25.7	25.9	7.6 8.0	7.8	33.8 33.9	33.9	90.4 90.5	90.5	6.5 6.4	6.5	6.7	1.2 1.2	1.2	2.3	5.0 4.0	4.5	5.5
				Middle	4.5	25.8 25.9	25.9	8.0 8.5	8.3	34.1 34.1	34.1	90.3 92.7	91.5	6.7 6.8	6.8		2.5 2.4	2.5		6.0 6.0	6.0	
				Bottom	8	26.0 25.9	26.0	8.7 8.6	8.7	33.9 33.9	33.9	89.6 94.0	91.8	6.5 7.0	6.8		3.2 3.2	3.2		6.0 6.0	6.0	
18-May-12	Rainy	Calm	17:02	Surface	1	27.8 27.8	27.8	8.0 8.0	8.0	25.4 25.4	25.4	99.6 103.2	101.4	8.2 8.5	8.4	8.4	5.0 5.0	5.0	4.9	4.0 4.0	4.0	4.3
				Middle	4.5	27.7 27.7	27.7	8.0 8.0	8.0	25.4 25.4	25.4	98.6 101.5	100.1	8.2 8.4	8.3		4.8 4.9	4.9		4.0 5.0	4.5	
				Bottom	8	27.6 27.6	27.6	8.0 8.0	8.0	25.5 25.5	25.5	95.6 101.3	98.5	7.9 8.4	8.2		4.8 4.9	4.9		5.0 4.0	4.5	
25-May-12	Fine	Calm	08:28	Surface	1	26.9 26.8	26.9	7.7 7.9	7.8	33.9 33.9	33.9	90.5 90.7	90.6	6.7 6.7	6.7	6.7	2.9 2.7	2.8	3.5	6.0 5.0	5.5	6.0
				Middle	4.5	26.9 26.8	26.9	8.0 8.5	8.3	33.9 34.1	34.0	90.3 92.8	91.6	6.6 6.7	6.7		3.6 3.6	3.6		4.0 5.0	4.5	
				Bottom	8	27.0 26.8	26.9	8.6 8.5	8.6	34.1 34.0	34.1	89.6 93.8	91.7	6.4 6.9	6.7		4.2 4.2	4.2		8.0 8.0	8.0	
28-May-12	Cloudy	Calm	10:13	Surface	1	27.1 27.1	27.1	7.9 7.9	7.9	29.7 29.7	29.7	90.0 93.0	91.5	7.4 7.7	7.6	7.8	3.8 3.7	3.8	3.7	6.0 6.0	6.0	6.2
				Middle	4.5	27.0 27.0	27.0	7.9 7.9	7.9	29.7 29.7	29.7	95.5 94.7	95.1	7.9 7.8	7.9		3.6 3.8	3.7		4.0 5.0	4.5	
				Bottom	8	26.9 26.9	26.9	7.9 7.9	7.9	29.8 29.8	29.8	94.4 89.0	91.7	7.8 7.4	7.6		3.5 3.7	3.6		8.0 8.0	8.0	

### Water Quality Monitoring Results at I2 - Mid-Flood Tide

Date	Weather Condition	Sea Condition**	Sampling Time	Depth (m)		Water Temperature (°C)		pH		Salinity ppt		DO Saturation (%)		Dissolved Oxygen (mg/L)			Turbidity(NTU)			Suspended Solids (mg/L)		
						Value	Average	Value	Average	Value	Average	Value	Average	Value	Average	DA*	Value	Average	DA*	Value	Average	DA*
30-May-12	Fine	Calm	14:01	Surface	1	27.8 27.8	27.8	8.1 8.1	8.1	27.1 27.1	27.1	100.2 99.7	100.0	8.3 8.3	8.3	8.4	4.0 4.0	4.0	3.9	3.0 4.0	3.5	3.7
				Middle	4.5	27.8 27.8	27.8	8.1 8.1	8.1	27.1 27.1	27.1	99.4 102.3	100.9	8.2 8.5	8.4		3.8 3.9	3.9		3.0 3.0	3.0	
				Bottom	8	27.7 27.7	27.7	8.1 8.1	8.1	27.1 27.1	27.1	98.1 97.3	97.7	8.1 8.1	8.1	8.1	3.8 3.9	3.9		4.0 5.0	4.5	

Remarks: \* DA: Depth-Averaged  
 \*\* Calm: Small or no wave; Moderate: Between calm and rough; Rough : White capped or rougher

### Water Quality Monitoring Results at Intake A - Mid-Ebb Tide

Date	Weather Condition	Sea Condition**	Sampling Time	Depth (m)		Water Temperature (°C)		pH		Salinity ppt		DO Saturation (%)		Dissolved Oxygen (mg/L)			Turbidity (NTU)			Suspended Solids (mg/L)		
						Value	Average	Value	Average	Value	Average	Value	Average	Value	Average	DA*	Value	Average	DA*	Value	Average	DA*
2-May-12	Cloudy	Calm	09:30	Surface	1	27.0 27.0	27.0	8.0 8.0	8.0	26.7 26.7	26.7	100.6 100.9	100.8	8.3 8.3	8.3	8.3	3.5 3.5	3.5	3.8	8.0 8.0	8.0	6.7
				Middle	5	26.9 26.9	26.9	8.0 8.0	8.0	26.8 26.8	26.8	99.3 101.1	100.2	8.2 8.4	8.3		3.7 4.3	4.0		4.0 4.0		
				Bottom	9	26.9 26.9	26.9	8.0 8.0	8.0	26.8 26.8	26.8	100.0 100.2	100.1	8.3 8.3	8.3		4.0 4.0	4.0		8.0 8.0	8.0	
4-May-12	Rainy	Calm	10:30	Surface	1	27.2 27.2	27.2	8.0 8.0	8.0	27.8 27.8	27.8	104.4 101.1	102.8	8.6 8.4	8.5	8.6	5.4 5.4	5.4	5.7	9.0 9.0	9.0	7.0
				Middle	5	27.1 27.1	27.1	8.0 8.0	8.0	27.8 27.8	27.8	103.9 102.3	103.1	8.6 8.5	8.6		5.6 6.2	5.9		7.0 7.0	7.0	
				Bottom	9	27.1 27.1	27.1	8.0 8.0	8.0	27.8 27.8	27.8	96.9 102.3	99.6	8.0 8.5	8.3		5.9 5.9	5.9		5.0 5.0	5.0	
7-May-12	Sunny	Calm	12:45	Surface	1	27.8 27.8	27.8	8.0 8.0	8.0	25.5 25.5	25.5	100.7 98.5	99.6	8.3 8.2	8.3	8.3	5.7 5.7	5.7	6.0	6.0 5.0	5.5	4.3
				Middle	5	27.7 27.7	27.7	8.0 8.0	8.0	25.5 25.5	25.5	99.6 99.4	99.5	8.2 8.2	8.2		5.9 6.5	6.2		3.0 3.0	3.0	
				Bottom	9	27.7 27.7	27.7	8.0 8.0	8.0	25.6 25.6	25.6	100.7 102.9	101.8	8.3 8.5	8.4		6.2 6.2	6.2		4.0 5.0	4.5	
9-May-12	Sunny	Calm	14:47	Surface	1	25.8 25.9	25.9	9.1 8.7	8.9	33.8 33.8	33.8	114.4 95.0	104.7	8.3 6.8	7.6	6.9	0.8 0.9	0.9	1.8	6.0 5.0	5.5	4.2
				Middle	5	26.0 25.8	25.9	8.0 8.0	8.0	33.9 33.9	33.9	94.6 76.7	85.7	6.8 5.5	6.2		1.6 1.5	1.6		3.0 3.0	3.0	
				Bottom	9	25.7 25.8	25.8	8.4 8.3	8.4	33.8 33.8	33.8	110.6 95.3	103.0	8.0 7.0	7.5		2.7 2.8	2.8		4.0 4.0	4.0	
11-May-12	Fine	Calm	16:17	Surface	1	26.9 26.9	26.9	8.1 8.1	8.1	21.1 21.1	21.1	100.5 100.5	100.5	8.2 8.2	8.2	8.2	2.8 2.7	2.8	3.0	9.0 9.0	9.0	6.3
				Middle	5	26.8 26.8	26.8	8.1 8.1	8.1	21.1 21.1	21.1	100.3 100.3	100.3	8.2 8.2	8.2		3.0 2.9	3.0		3.0 3.0	3.0	
				Bottom	9	26.8 26.8	26.8	8.1 8.1	8.1	21.1 21.1	21.1	100.1 100.0	100.1	8.2 8.2	8.2		3.3 3.3	3.3		7.0 7.0	7.0	
14-May-12	Fine	Calm	08:00	Surface	1	28.0 28.0	28.0	8.0 8.0	8.0	25.5 25.5	25.5	96.0 96.7	96.4	7.9 8.0	8.0	8.1	5.5 5.5	5.5	5.8	10.0 10.0	10.0	9.5
				Middle	5	27.9 27.9	27.9	8.0 8.0	8.0	25.5 25.5	25.5	98.0 96.3	97.2	8.1 8.0	8.1		5.7 6.3	6.0		9.0 10.0	9.5	
				Bottom	9	27.9 27.9	27.9	8.0 8.0	8.0	25.5 25.5	25.5	99.0 103.6	101.3	8.2 8.6	8.4		6.0 6.0	6.0		9.0 9.0	9.0	
16-May-12	Cloudy	Calm	09:54	Surface	1	25.9 25.8	25.9	8.8 9.1	9.0	33.9 33.8	33.9	94.8 114.5	104.7	6.9 8.4	7.7	7.0	1.1 1.0	1.1	1.8	7.0 6.0	6.5	6.2
				Middle	4.5	26.0 25.9	26.0	7.8 7.9	7.9	33.7 34.0	33.9	94.7 76.9	85.8	6.9 5.6	6.3		1.8 1.9	1.9		5.0 5.0	5.0	
				Bottom	8	25.9 25.7	25.8	8.5 8.1	8.3	34.0 33.8	33.9	110.6 95.2	102.9	8.0 7.0	7.5		2.4 2.5	2.5		7.0 7.0	7.0	
18-May-12	Rainy	Calm	11:00	Surface	1	27.8 27.8	27.8	8.0 8.1	8.1	25.4 25.4	25.4	102.9 101.9	102.4	8.5 8.4	8.5	8.4	4.7 4.7	4.7	5.0	4.0 4.0	4.0	5.8
				Middle	5	27.8 27.7	27.8	8.1 8.1	8.1	25.4 25.4	25.4	98.5 102.2	100.4	8.1 8.5	8.3		4.9 5.5	5.2		7.0 7.0	7.0	
				Bottom	9	27.7 27.7	27.7	8.1 8.1	8.1	25.4 25.4	25.4	98.2 101.2	99.7	8.1 8.4	8.3		5.2 5.2	5.2		6.0 7.0	6.5	
21-May-12	Fine	Calm	12:42	Surface	1	26.0 25.7	25.9	8.9 8.9	8.9	33.8 33.8	33.8	94.9 114.5	104.7	6.8 8.4	7.6	6.9	1.2 1.4	1.3	1.8	6.0 5.0	5.5	4.7
				Middle	5	25.8 25.9	25.9	8.0 7.9	8.0	33.9 34.1	34.0	94.7 76.9	85.8	6.9 5.5	6.2		1.9 1.9	1.9		4.0 4.0	4.0	
				Bottom	9	26.0 25.7	25.9	8.4 8.2	8.3	33.8 33.8	33.8	110.6 95.2	102.9	8.0 6.9	7.5		2.2 2.3	2.3		4.0 5.0	4.5	

### Water Quality Monitoring Results at Intake A - Mid-Ebb Tide

Date	Weather Condition	Sea Condition**	Sampling Time	Depth (m)		Water Temperature (°C)		pH		Salinity ppt		DO Saturation (%)		Dissolved Oxygen (mg/L)			Turbidity (NTU)			Suspended Solids (mg/L)		
						Value	Average	Value	Average	Value	Average	Value	Average	Value	Average	DA*	Value	Average	DA*	Value	Average	DA*
23-May-12	Sunny	Calm	13:15	Surface	1	28.0 28.0	28.0	8.0 8.0	8.0	25.6 25.6	25.6	99.3 100.3	99.8	8.2 8.3	8.3	8.4	5.1 5.1	5.1	5.4	4.0 4.0	4.0	4.2
				Middle	5.5	27.9 27.9	27.9	8.0 8.0	8.0	25.7 25.7	25.7	103.3 101.7	102.5	8.6 8.4	8.5		5.3 5.9	5.6		3.0 3.0	3.0	
				Bottom	10	27.9 27.9	27.9	8.0 8.0	8.0	25.7 25.7	25.7	99.3 97.3	98.3	8.2 8.1	8.2		5.6 5.6	5.6		5.0 6.0	5.5	
25-May-12	Fine	Calm	15:00	Surface	1	26.8 26.7	26.8	9.0 9.0	9.0	34.0 33.8	33.9	94.8 114.3	104.6	6.9 8.3	7.6	6.9	2.9 3.0	3.0	3.1	3.0 3.0	3.0	3.8
				Middle	5	27.0 26.7	26.9	7.8 7.9	7.9	33.8 33.8	33.8	94.7 76.7	85.7	6.8 5.6	6.2		3.1 3.1	3.1		6.0 5.0	5.5	
				Bottom	9	27.0 27.0	27.0	8.3 8.3	8.3	33.9 34.0	34.0	110.6 95.2	102.9	7.9 6.9	7.4		3.3 3.3	3.3		3.0 3.0	3.0	
28-May-12	Cloudy	Calm	16:23	Surface	1	27.1 27.1	27.1	7.8 7.8	7.8	29.7 29.7	29.7	92.4 96.5	94.5	7.6 8.0	7.8	7.7	3.3 3.3	3.3	3.6	5.0 6.0	5.5	6.7
				Middle	4.5	27.1 27.1	27.1	7.8 7.8	7.8	29.7 29.7	29.7	89.6 92.3	91.0	7.4 7.6	7.5		3.5 4.0	3.8		10.0 10.0	10.0	
				Bottom	8	27.1 27.1	27.1	7.8 7.8	7.8	29.7 29.7	29.7	88.6 93.2	90.9	7.3 7.7	7.5		3.7 3.8	3.8		5.0 4.0	4.5	
30-May-12	Fine	Calm	07:59	Surface	1	27.9 27.9	27.9	8.0 8.0	8.0	27.0 27.0	27.0	101.8 102.7	102.3	8.4 8.5	8.5	8.5	3.7 3.7	3.7	4.0	6.0 6.0	6.0	5.0
				Middle	5	27.8 27.8	27.8	8.0 8.0	8.0	27.1 27.1	27.1	100.4 102.2	101.3	8.3 8.5	8.4		3.9 4.5	4.2		4.0 4.0	4.0	
				Bottom	9	27.8 27.8	27.8	8.0 8.0	8.0	27.1 27.1	27.1	98.2 99.8	99.0	8.1 8.3	8.2		4.2 4.2	4.2		5.0 5.0	5.0	

Remarks: \* DA: Depth-Averaged  
 \*\* Calm: Small or no wave; Moderate: Between calm and rough; Rough : White capped or rougher

### Water Quality Monitoring Results at Intake A - Mid-Flood Tide

Date	Weather Condition	Sea Condition**	Sampling Time	Depth (m)		Water Temperature (°C)		pH		Salinity ppt		DO Saturation (%)		Dissolved Oxygen (mg/L)			Turbidity(NTU)			Suspended Solids (mg/L)		
						Value	Average	Value	Average	Value	Average	Value	Average	Value	Average	DA*	Value	Average	DA*	Value	Average	DA*
2-May-12	Cloudy	Calm	15:14	Surface	1	26.9 26.9	26.9	8.0 8.0	8.0	26.7 26.7	26.7	102.9 102.8	102.9	8.5 8.5	8.5	8.4	3.6 3.5	3.6	3.8	5.0 5.0	5.0	5.2
				Middle	5	26.9 26.9	26.9	8.0 8.0	8.0	26.8 26.7	26.8	100.1 97.3	98.7	8.3 8.1	8.2		3.8 3.7	3.8		6.0 6.0	6.0	
				Bottom	9	26.9 26.9	26.9	8.0 8.0	8.0	26.8 26.8	26.8	98.8 99.2	99.0	8.2 8.2	8.2		4.1 4.1	4.1		4.0 5.0	4.5	
4-May-12	Rainy	Calm	16:15	Surface	1	27.2 27.2	27.2	8.0 8.0	8.0	27.8 27.8	27.8	100.0 97.0	98.5	8.3 8.0	8.2	8.3	5.5 5.4	5.5	5.7	14.0 13.0	13.5	11.0
				Middle	5	27.1 27.1	27.1	8.0 8.0	8.0	27.8 27.8	27.8	103.8 96.8	100.3	8.6 8.0	8.3		5.7 5.6	5.7		12.0 13.0	12.5	
				Bottom	9	27.1 27.1	27.1	8.0 8.0	8.0	27.8 27.8	27.8	103.0 99.6	101.3	8.5 8.2	8.4		6.0 6.0	6.0		7.0 7.0	7.0	
9-May-12	Sunny	Calm	08:14	Surface	1	26.0 25.9	26.0	8.5 8.2	8.4	34.0 33.8	33.9	93.0 91.4	92.2	6.7 6.7	6.7	6.6	1.5 1.5	1.5	1.8	3.0 4.0	3.5	3.7
				Middle	5	26.0 25.8	25.9	8.1 8.8	8.5	33.9 34.0	34.0	93.4 81.4	87.4	6.9 5.9	6.4		1.7 1.7	1.7		3.0 4.0	3.5	
				Bottom	9	25.7 26.0	25.9	8.1 8.8	8.5	33.9 34.0	34.0	82.2 91.2	86.7	5.8 6.6	6.2		2.1 2.3	2.2		4.0 4.0	4.0	
11-May-12	Fine	Calm	09:18	Surface	1	26.9 26.9	26.9	8.1 8.1	8.1	21.1 21.1	21.1	100.8 101.1	101.0	8.2 8.3	8.3	8.3	2.7 2.7	2.7	3.0	6.0 6.0	6.0	6.8
				Middle	5	26.8 26.8	26.8	8.1 8.1	8.1	21.1 21.1	21.1	100.3 100.1	100.2	8.2 8.2	8.2		2.9 3.5	3.2		7.0 6.0	6.5	
				Bottom	9	26.8 26.8	26.8	8.1 8.1	8.1	21.1 21.1	21.1	99.9 99.8	99.9	8.2 8.2	8.2		3.2 3.2	3.2		8.0 8.0	8.0	
14-May-12	Fine	Calm	13:44	Surface	1	27.9 27.9	27.9	8.0 8.0	8.0	25.5 25.5	25.5	99.8 101.8	100.8	8.3 8.4	8.4	8.4	5.6 5.5	5.6	5.8	5.0 5.0	5.0	8.3
				Middle	5	27.9 27.9	27.9	8.0 8.0	8.0	25.5 25.5	25.5	101.2 100.4	100.8	8.4 8.3	8.4		5.8 5.7	5.8		11.0 10.0	10.5	
				Bottom	9	27.9 27.9	27.9	8.0 8.0	8.0	25.5 25.5	25.5	98.7 98.7	98.7	8.2 8.2	8.2		6.1 6.1	6.1		10.0 9.0	9.5	
16-May-12	Cloudy	Calm	16:20	Surface	1	26.1 25.9	26.0	8.6 8.0	8.3	33.9 33.8	33.9	93.1 91.4	92.3	6.7 6.7	6.7	6.5	1.1 1.2	1.2	1.6	3.0 4.0	3.5	6.3
				Middle	4.5	25.8 25.8	25.8	8.2 8.7	8.5	33.9 33.9	33.9	93.4 81.3	87.4	6.6 5.9	6.3		1.5 1.6	1.6		5.0 5.0	5.0	
				Bottom	8	25.9 25.7	25.8	8.8 8.1	8.5	33.9 34.1	34.0	91.0 82.1	86.6	6.5 5.9	6.2		1.9 2.0	2.0		11.0 10.0	10.5	
18-May-12	Rainy	Calm	16:44	Surface	1	27.8 27.8	27.8	8.0 8.0	8.0	25.4 25.4	25.4	103.9 99.1	101.5	8.6 8.2	8.4	8.5	4.8 4.7	4.8	5.0	5.0 4.0	4.5	5.5
				Middle	5	27.8 27.8	27.8	8.0 8.0	8.0	25.4 25.4	25.4	104.1 101.0	102.6	8.6 8.4	8.5		5.0 4.9	5.0		5.0 5.0	5.0	
				Bottom	9	27.8 27.8	27.8	8.0 8.0	8.0	25.4 25.4	25.4	96.7 101.3	99.0	8.0 8.4	8.2		5.3 5.3	5.3		7.0 7.0	7.0	
25-May-12	Fine	Calm	08:15	Surface	1	27.0 26.7	26.9	8.7 8.1	8.4	33.8 34.0	33.9	93.0 91.4	92.2	6.8 6.6	6.7	6.6	2.2 2.2	2.2	2.9	7.0 7.0	7.0	5.5
				Middle	5	26.9 26.7	26.8	8.3 8.9	8.6	33.9 34.0	34.0	93.3 81.2	87.3	6.9 5.8	6.4		2.9 3.0	3.0		5.0 6.0	5.5	
				Bottom	9	26.8 26.9	26.9	8.8 8.1	8.5	34.0 34.0	34.0	91.1 82.2	86.7	6.6 6.0	6.3		3.6 3.6	3.6		4.0 4.0	4.0	
28-May-12	Cloudy	Calm	09:55	Surface	1	27.1 27.1	27.1	7.8 7.8	7.8	29.7 29.7	29.7	92.6 95.3	94.0	7.7 7.9	7.8	7.8	3.6 3.6	3.6	3.9	3.0 3.0	3.0	4.0
				Middle	5	27.1 27.1	27.1	7.8 7.8	7.8	29.7 29.7	29.7	96.7 90.8	93.8	8.0 7.5	7.8		3.9 3.7	3.8		5.0 6.0	5.5	
				Bottom	9	27.1 27.1	27.1	7.8 7.8	7.8	29.7 29.7	29.7	93.6 91.2	92.4	7.7 7.5	7.6		4.3 4.0	4.2		3.0 4.0	3.5	

### Water Quality Monitoring Results at Intake A - Mid-Flood Tide

Date	Weather Condition	Sea Condition**	Sampling Time	Depth (m)		Water Temperature (°C)		pH		Salinity ppt		DO Saturation (%)		Dissolved Oxygen (mg/L)			Turbidity(NTU)			Suspended Solids (mg/L)			
						Value	Average	Value	Average	Value	Average	Value	Average	Value	Average	DA*	Value	Average	DA*	Value	Average	DA*	
30-May-12	Fine	Calm	13:44	Surface	1	27.9	27.9	8.0	8.0	27.0	27.0	101.1	100.8	8.4	8.4	8.5	3.8	3.8	4.0	3.0	3.0	3.0	
					27.9	27.9	8.0	8.0	27.0	27.0	100.4	100.8	8.3	8.4	3.7		3.8	3.0		3.0			
				Middle	5	27.8	27.8	8.0	8.0	27.1	27.1	102.9	102.4	8.5	8.5		4.0	4.0		3.0	3.0		
					27.8	27.8	8.0	8.0	27.0	27.0	101.8	101.8	8.4	8.4	3.9	4.0	3.0	3.0					
				Bottom	9	27.8	27.8	8.0	8.0	27.1	27.1	100.6	100.5	8.3	8.3	8.3	8.3	4.3		4.3	3.0		3.0
					27.8	27.8	8.0	8.0	27.1	27.1	100.3	100.5	8.3	8.3	8.3	8.3	4.3	4.3		3.0	3.0		

Remarks: \* DA: Depth-Averaged  
 \*\* Calm: Small or no wave; Moderate: Between calm and rough; Rough : White capped or rougher

### Water Quality Monitoring Results at Intake B - Mid-Ebb Tide

Date	Weather Condition	Sea Condition**	Sampling Time	Depth (m)		Water Temperature (°C)		pH		Salinity ppt		DO Saturation (%)		Dissolved Oxygen (mg/L)			Turbidity (NTU)			Suspended Solids (mg/L)			
						Value	Average	Value	Average	Value	Average	Value	Average	Value	Average	DA*	Value	Average	DA*	Value	Average	DA*	
2-May-12	Cloudy	Calm	10:19	Surface	1	26.9 26.9	26.9	8.1 8.1	8.1	26.8 26.8	26.8	98.2 101.6	99.9	8.1 8.4	8.3	8.3	3.5 3.5	3.5	3.6	6.0 5.0	5.5	4.0	
				Middle	5	26.9 26.9	26.9	8.1 8.1	8.1	26.8 26.8	26.8	96.4 103.5	100.0	8.0 8.6	8.3		3.5 3.6	3.6		3.0 3.0	3.0		
				Bottom	9	26.9 26.8	26.9	8.1 8.1	8.1	26.8 26.8	26.8	96.5 99.4	98.0	8.0 8.2	8.1		8.1	3.6 3.6		3.6	3.0 4.0		3.5
4-May-12	Rainy	Calm	11:20	Surface	1	27.2 27.2	27.2	8.1 8.1	8.1	27.8 27.8	27.8	97.3 99.3	98.3	8.1 8.2	8.2	8.4	5.4 5.4	5.4	5.5	10.0 11.0	10.5	8.7	
				Middle	5	27.1 27.1	27.1	8.1 8.1	8.1	27.9 27.9	27.9	103.0 101.2	102.1	8.5 8.4	8.5		8.4	5.4 5.5		5.5	8.0 9.0		8.5
				Bottom	9	27.1 27.1	27.1	8.1 8.1	8.1	27.9 27.9	27.9	96.8 102.1	99.5	8.0 8.4	8.2		8.2	5.5 5.5		5.5	7.0 7.0		7.0
7-May-12	Sunny	Calm	13:35	Surface	1	27.8 27.8	27.8	8.0 8.0	8.0	25.6 25.6	25.6	99.1 101.6	100.4	8.2 8.4	8.3	8.3	5.7 5.7	5.7	5.8	6.0 6.0	6.0	5.2	
				Middle	5.5	27.7 27.7	27.7	8.0 8.0	8.0	25.6 25.6	25.6	98.1 102.3	100.2	8.1 8.5	8.3		8.4	5.7 5.8		5.8	6.0 7.0		6.5
				Bottom	10	27.7 27.7	27.7	8.0 8.0	8.0	25.6 25.6	25.6	102.7 100.2	101.5	8.5 8.3	8.4		8.4	5.8 5.8		5.8	3.0 3.0		3.0
9-May-12	Sunny	Calm	15:25	Surface	1	25.8 25.8	25.8	8.0 7.9	8.0	34.0 33.9	34.0	100.1 100.0	100.1	7.1 7.3	7.2	7.4	1.5 1.6	1.6	1.9	5.0 5.0	5.0	5.3	
				Middle	5.5	25.7 25.8	25.8	7.9 8.1	8.0	34.0 34.1	34.1	104.9 99.9	102.4	7.7 7.2	7.5		7.5	1.7 1.9		1.8	4.0 5.0		4.5
				Bottom	10	25.8 25.9	25.9	8.0 7.7	7.9	34.0 34.1	34.1	105.0 100.6	102.8	7.5 7.4	7.5		7.5	2.1 2.2		2.2	7.0 6.0		6.5
11-May-12	Fine	Calm	17:07	Surface	1	26.9 26.9	26.9	8.2 8.2	8.2	21.1 21.1	21.1	98.1 97.9	98.0	8.0 8.0	8.0	8.0	4.0 3.9	4.0	3.1	9.0 9.0	9.0	8.2	
				Middle	5	26.8 26.8	26.8	8.2 8.2	8.2	21.2 21.2	21.2	97.8 97.7	97.8	8.0 8.0	8.0		8.0	2.7 2.7		2.7	10.0 9.0		9.5
				Bottom	9	26.8 26.8	26.8	8.2 8.2	8.2	21.2 21.2	21.2	97.7 97.5	97.6	8.0 8.0	8.0		8.0	2.7 2.7		2.7	6.0 6.0		6.0
14-May-12	Fine	Calm	08:50	Surface	1	28.0 28.0	28.0	8.1 8.1	8.1	25.5 25.5	25.5	100.7 99.1	99.9	8.3 8.2	8.3	8.1	5.5 5.5	5.5	5.6	11.0 12.0	11.5	11.3	
				Middle	5.5	27.9 27.9	27.9	8.1 8.1	8.1	25.6 25.6	25.6	95.3 95.8	95.6	7.9 7.9	7.9		8.2	5.5 5.6		5.6	13.0 13.0		13.0
				Bottom	10	27.9 27.9	27.9	8.1 8.1	8.1	25.6 25.6	25.6	98.7 99.6	99.2	8.2 8.2	8.2		8.2	5.6 5.6		5.6	9.0 10.0		9.5
16-May-12	Cloudy	Calm	10:30	Surface	1	26.0 25.9	26.0	8.1 8.1	8.1	34.1 33.9	34.0	100.3 100.2	100.3	7.2 7.4	7.3	7.4	1.5 1.6	1.6	1.9	5.0 5.0	5.0	4.0	
				Middle	5	25.9 25.9	25.9	8.1 8.0	8.1	34.0 33.9	34.0	99.9 104.7	102.3	7.3 7.6	7.5		7.5	1.9 1.9		1.9	3.0 3.0		3.0
				Bottom	9	25.9 25.8	25.9	7.9 8.0	8.0	33.9 34.1	34.0	100.5 105.0	102.8	7.2 7.7	7.5		7.5	2.1 2.1		2.1	4.0 4.0		4.0
18-May-12	Rainy	Calm	11:50	Surface	1	27.8 27.8	27.8	8.1 8.1	8.1	25.4 25.4	25.4	98.9 102.9	100.9	8.2 8.5	8.4	8.4	4.7 4.7	4.7	4.8	6.0 5.0	5.5	6.3	
				Middle	5	27.8 27.8	27.8	8.1 8.1	8.1	25.4 25.4	25.4	99.9 103.1	101.5	8.3 8.5	8.4		8.4	4.7 4.8		4.8	9.0 9.0		9.0
				Bottom	9	27.7 27.7	27.7	8.1 8.1	8.1	25.4 25.4	25.4	102.0 98.8	100.4	8.4 8.2	8.3		8.3	4.8 4.8		4.8	4.0 5.0		4.5
21-May-12	Fine	Calm	13:18	Surface	1	25.9 25.8	25.9	7.9 8.0	8.0	33.9 34.0	34.0	100.3 100.0	100.2	7.2 7.4	7.3	7.3	1.4 1.4	1.4	1.8	5.0 6.0	5.5	5.3	
				Middle	5	25.9 25.7	25.8	7.9 8.1	8.0	33.9 34.2	34.1	100.1 104.7	102.4	7.1 7.5	7.3		7.5	1.5 1.6		1.6	7.0 6.0		6.5
				Bottom	9	25.9 25.8	25.9	7.8 8.0	7.9	34.1 33.9	34.0	100.6 104.9	102.8	7.4 7.5	7.5		7.5	2.3 2.4		2.4	4.0 4.0		4.0



### Water Quality Monitoring Results at Intake B - Mid-Ebb Tide

Date	Weather Condition	Sea Condition**	Sampling Time	Depth (m)		Water Temperature (°C)		pH		Salinity ppt		DO Saturation (%)		Dissolved Oxygen (mg/L)			Turbidity (NTU)			Suspended Solids (mg/L)		
						Value	Average	Value	Average	Value	Average	Value	Average	Value	Average	DA*	Value	Average	DA*	Value	Average	DA*
23-May-12	Sunny	Calm	14:05	Surface	1	28.0 28.0	28.0	8.1 8.1	8.1	25.7 25.7	25.7	99.0 99.0	99.0	8.2 8.2	8.2	8.3	5.1 5.1	5.1	5.2	3.0 3.0	3.0	4.5
				Middle	5	27.9 27.9	27.9	8.1 8.1	8.1	25.7 25.7	25.7	101.0 100.4	100.7	8.4 8.3	8.4		5.1 5.2	5.2		3.0 3.0	3.0	
				Bottom	9	27.9 27.9	27.9	8.1 8.1	8.1	25.7 25.7	25.7	97.6 100.6	99.1	8.1 8.3	8.2		8.2	5.2 5.2		5.2	8.0 7.0	
25-May-12	Fine	Calm	15:36	Surface	1	26.8 26.7	26.8	8.0 8.1	8.1	33.9 34.0	34.0	100.1 100.2	100.2	7.3 7.3	7.3	7.4	2.2 2.3	2.3	3.3	5.0 4.0	4.5	5.2
				Middle	5	27.0 26.7	26.9	8.1 7.9	8.0	33.9 34.0	34.0	99.9 104.9	102.4	7.4 7.6	7.5		3.3 3.3	3.3		7.0 7.0	7.0	
				Bottom	9	26.9 26.7	26.8	7.7 7.9	7.8	33.9 34.1	34.0	100.5 104.8	102.7	7.3 7.6	7.5		7.5	4.1 4.2		4.2	4.0 4.0	
28-May-12	Cloudy	Calm	17:13	Surface	1	27.1 27.1	27.1	7.9 7.9	7.9	29.7 29.7	29.7	88.6 88.3	88.5	7.3 7.3	7.3	7.4	3.3 3.3	3.3	3.4	6.0 5.0	5.5	4.5
				Middle	5	27.1 27.1	27.1	7.9 7.9	7.9	29.7 29.7	29.7	89.5 91.5	90.5	7.4 7.6	7.5		3.4 3.4	3.4		4.0 4.0	4.0	
				Bottom	9	27.0 27.0	27.0	7.9 7.9	7.9	29.8 29.8	29.8	86.9 89.7	88.3	7.2 7.4	7.3		7.3	3.5 3.4		3.5	4.0 4.0	
30-May-12	Fine	Calm	08:49	Surface	1	27.9 27.9	27.9	8.1 8.1	8.1	27.1 27.1	27.1	98.4 99.6	99.0	8.1 8.2	8.2	8.2	3.7 3.7	3.7	3.8	4.0 5.0	4.5	4.8
				Middle	5	27.8 27.8	27.8	8.1 8.1	8.1	27.1 27.1	27.1	97.7 100.8	99.3	8.1 8.3	8.2		3.7 3.8	3.8		6.0 5.0	5.5	
				Bottom	9	27.8 27.8	27.8	8.1 8.1	8.1	27.1 27.1	27.1	99.3 101.2	100.3	8.2 8.4	8.3		8.3	3.8 3.8		3.8	5.0 4.0	

Remarks: \* DA: Depth-Averaged  
 \*\* Calm: Small or no wave; Moderate: Between calm and rough; Rough : White capped or rougher

### Water Quality Monitoring Results at Intake B - Mid-Flood Tide

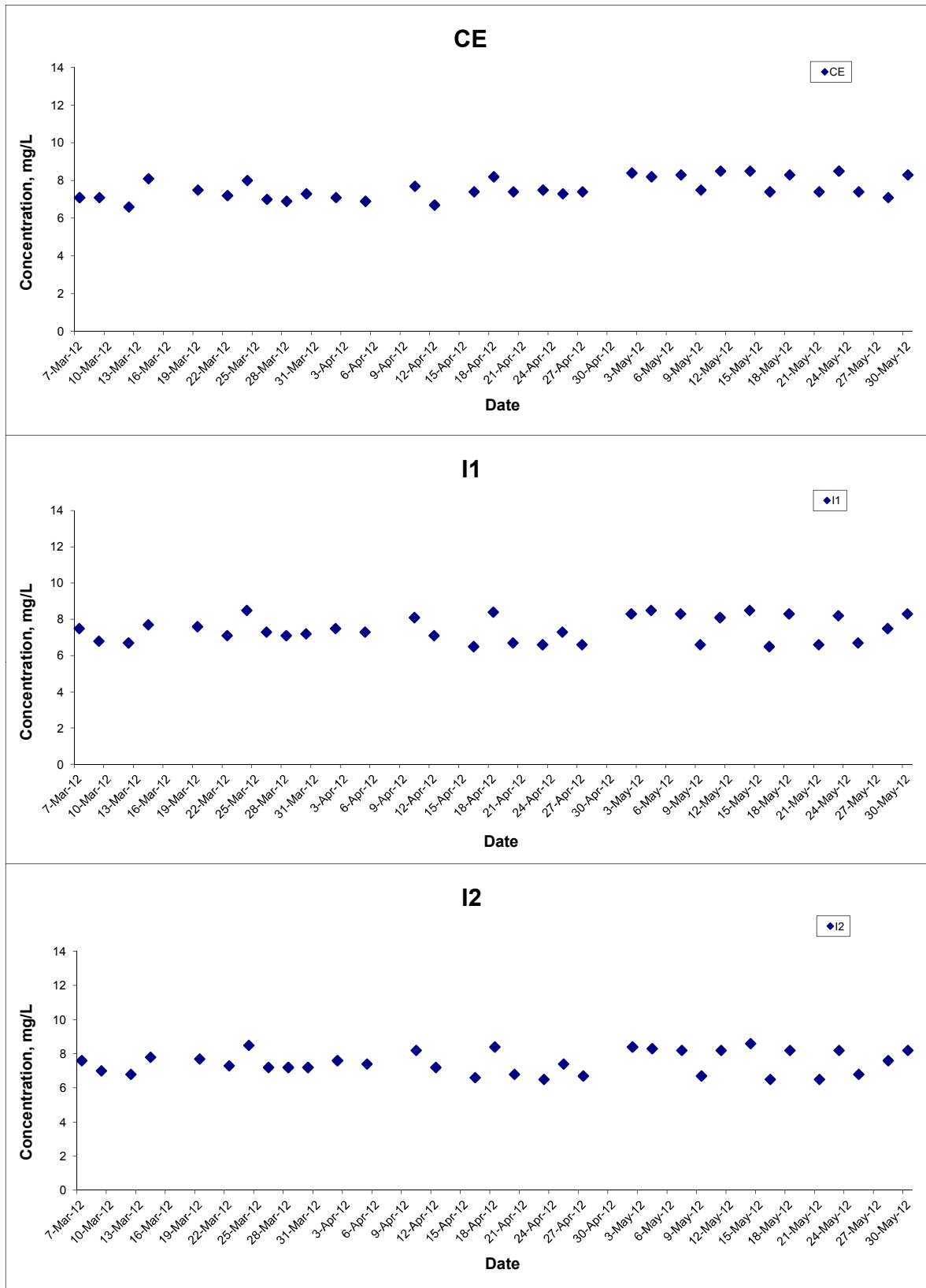
Date	Weather Condition	Sea Condition**	Sampling Time	Depth (m)		Water Temperature (°C)		pH		Salinity ppt		DO Saturation (%)		Dissolved Oxygen (mg/L)			Turbidity(NTU)			Suspended Solids (mg/L)		
						Value	Average	Value	Average	Value	Average	Value	Average	Value	Average	DA*	Value	Average	DA*	Value	Average	DA*
2-May-12	Cloudy	Calm	16:04	Surface	1	27.0 26.9	27.0	8.1 8.1	8.1	26.8 26.8	26.8	102.5 99.7	101.1	8.5 8.3	8.4	8.5	4.8 4.7	4.8	3.9	7.0 6.0	6.5	6.8
				Middle	5.5	26.9 26.9	26.9	8.1 8.1	8.1	26.8 26.8	26.8	103.4 101.0	102.2	8.6 8.4	8.5		3.5 3.5	3.5		6.0 6.0	6.0	
				Bottom	10	26.9 26.9	26.9	8.1 8.1	8.1	26.8 26.8	26.8	99.0 98.0	98.5	8.2 8.1	8.2		3.5 3.5	3.5		8.0 8.0	8.0	
4-May-12	Rainy	Calm	17:05	Surface	1	27.2 27.2	27.2	8.1 8.1	8.1	27.8 27.8	27.8	101.0 97.1	99.1	8.4 8.0	8.2	8.3	7.3 6.0	6.7	5.8	11.0 11.0	11.0	8.0
				Middle	5	27.1 27.1	27.1	8.1 8.1	8.1	27.9 27.9	27.9	99.5 101.7	100.6	8.2 8.4	8.3		5.4 5.4	5.4		8.0 8.0	8.0	
				Bottom	9	27.1 27.1	27.1	8.1 8.1	8.1	27.9 27.9	27.9	100.1 102.7	101.4	8.3 8.5	8.4		5.4 5.4	5.4		5.0 5.0	5.0	
9-May-12	Sunny	Calm	08:50	Surface	1	26.0 25.9	26.0	7.9 7.9	7.9	34.0 34.0	34.0	98.0 99.1	98.6	7.1 7.2	7.2	7.3	1.4 1.4	1.4	2.2	4.0 4.0	4.0	6.0
				Middle	5.5	25.8 25.9	25.9	8.2 7.9	8.1	33.9 34.1	34.0	98.7 104.6	101.7	7.1 7.6	7.4		2.0 2.1	2.1		6.0 5.0	5.5	
				Bottom	10	25.7 26.0	25.9	8.6 8.9	8.8	34.1 34.0	34.1	97.2 104.5	100.9	7.1 7.5	7.3		3.1 2.9	3.0		8.0 9.0	8.5	
11-May-12	Fine	Calm	10:08	Surface	1	26.9 26.9	26.9	8.2 8.2	8.2	21.1 21.1	21.1	97.9 97.8	97.9	8.0 8.0	8.0	8.0	2.7 2.7	2.7	2.8	7.0 7.0	7.0	6.7
				Middle	5	26.8 26.8	26.8	8.2 8.2	8.2	21.2 21.2	21.2	97.5 97.4	97.5	8.0 8.0	8.0		2.8 2.8	2.8		6.0 7.0	7.0	
				Bottom	9	26.8 26.8	26.8	8.2 8.2	8.2	21.2 21.2	21.2	97.4 97.3	97.4	8.0 8.0	8.0		2.8 2.8	2.8		6.0 6.0	6.0	
14-May-12	Fine	Calm	14:34	Surface	1	28.0 28.0	28.0	8.1 8.1	8.1	25.5 25.5	25.5	100.5 99.9	100.2	8.3 8.3	8.3	8.4	7.4 6.1	6.8	5.9	9.0 10.0	9.5	9.7
				Middle	5.5	27.9 27.9	27.9	8.1 8.1	8.1	25.6 25.6	25.6	100.0 102.5	101.3	8.3 8.5	8.4		5.5 5.5	5.5		9.0 9.0	9.0	
				Bottom	10	27.9 27.9	27.9	8.1 8.1	8.1	25.6 25.6	25.6	101.3 95.6	98.5	8.4 7.9	8.2		5.5 5.5	5.5		10.0 11.0	10.5	
16-May-12	Cloudy	Calm	16:57	Surface	1	26.0 25.8	25.9	8.0 8.1	8.1	34.1 34.0	34.1	98.0 99.1	98.6	7.2 7.3	7.3	7.4	1.2 1.3	1.3	2.1	5.0 5.0	5.0	6.5
				Middle	5	25.8 26.0	25.9	8.0 8.0	8.0	34.0 34.2	34.1	98.5 104.5	101.5	7.2 7.5	7.4		2.4 2.5	2.5		6.0 6.0	6.0	
				Bottom	9	25.9 25.9	25.9	8.6 8.8	8.7	34.0 34.2	34.1	97.3 104.6	101.0	6.9 7.5	7.2		2.5 2.6	2.6		8.0 9.0	8.5	
18-May-12	Rainy	Calm	17:34	Surface	1	27.8 27.8	27.8	8.1 8.1	8.1	25.4 25.4	25.4	96.8 103.6	100.2	8.0 8.6	8.3	8.4	6.6 5.3	6.0	5.1	3.0 4.0	3.5	4.3
				Middle	5.5	27.8 27.8	27.8	8.1 8.1	8.1	25.4 25.4	25.4	101.4 101.3	101.4	8.4 8.4	8.4		4.7 4.7	4.7		5.0 5.0	5.0	
				Bottom	10	27.7 27.7	27.7	8.1 8.1	8.1	25.4 25.4	25.4	97.6 100.0	98.8	8.1 8.2	8.2		4.7 4.7	4.7		5.0 4.0	4.5	
25-May-12	Fine	Calm	08:52	Surface	1	26.9 26.8	26.9	7.9 7.9	7.9	34.0 34.1	34.1	98.1 99.2	98.7	7.2 7.3	7.3	7.4	3.0 3.0	3.0	3.5	4.0 5.0	4.5	4.7
				Middle	5	26.9 26.7	26.8	8.0 8.0	8.0	34.1 33.9	34.0	98.7 104.6	101.7	7.1 7.7	7.4		3.6 3.6	3.6		4.0 5.0	4.5	
				Bottom	9	26.8 26.8	26.8	8.4 8.9	8.7	34.1 34.1	34.1	97.2 104.6	100.9	7.0 7.5	7.3		3.8 3.9	3.9		5.0 5.0	5.0	
28-May-12	Cloudy	Calm	10:46	Surface	1	27.1 27.1	27.1	7.9 7.9	7.9	29.7 29.7	29.7	87.8 93.1	90.5	7.3 7.7	7.5	7.5	4.7 4.8	4.8	3.9	5.0 4.0	4.5	4.3
				Middle	5	27.1 27.1	27.1	7.9 7.9	7.9	29.7 29.7	29.7	89.7 89.0	89.4	7.4 7.4	7.4		3.5 3.6	3.6		4.0 4.0	4.5	
				Bottom	9	27.1 27.1	27.1	7.9 7.9	7.9	29.7 29.7	29.7	90.4 94.3	92.4	7.5 7.8	7.7		3.4 3.4	3.4		4.0 4.0	4.0	

### Water Quality Monitoring Results at Intake B - Mid-Flood Tide

Date	Weather Condition	Sea Condition**	Sampling Time	Depth (m)		Water Temperature (°C)		pH		Salinity ppt		DO Saturation (%)		Dissolved Oxygen (mg/L)			Turbidity(NTU)			Suspended Solids (mg/L)		
						Value	Average	Value	Average	Value	Average	Value	Average	Value	Average	DA*	Value	Average	DA*	Value	Average	DA*
30-May-12	Fine	Calm	14:34	Surface	1	27.9	27.9	8.1	8.1	27.1	27.1	101.1	101.6	8.4	8.4	8.4	4.8	4.9	4.1	4.0	4.0	4.7
					27.9	27.9	8.1	8.1	27.1	27.1	102.0	100.8	8.4	8.4	4.9		4.9	4.0		4.0		
				Middle	5.5	27.8	27.8	8.1	8.1	27.1	27.1	102.5	100.8	8.5	8.4		3.7	3.7		5.0	5.0	
					27.8	27.8	8.1	8.1	27.1	27.1	99.0	100.3	8.2	8.3	3.7	3.7	5.0	5.0				
				Bottom	10	27.8	27.8	8.1	8.1	27.1	27.1	101.5	100.3	8.4	8.3	8.3	3.7	3.7		5.0	5.0	
					27.8	27.8	8.1	8.1	27.1	27.1	99.1	100.3	8.2	8.3	8.3	3.7	3.7	5.0		5.0		

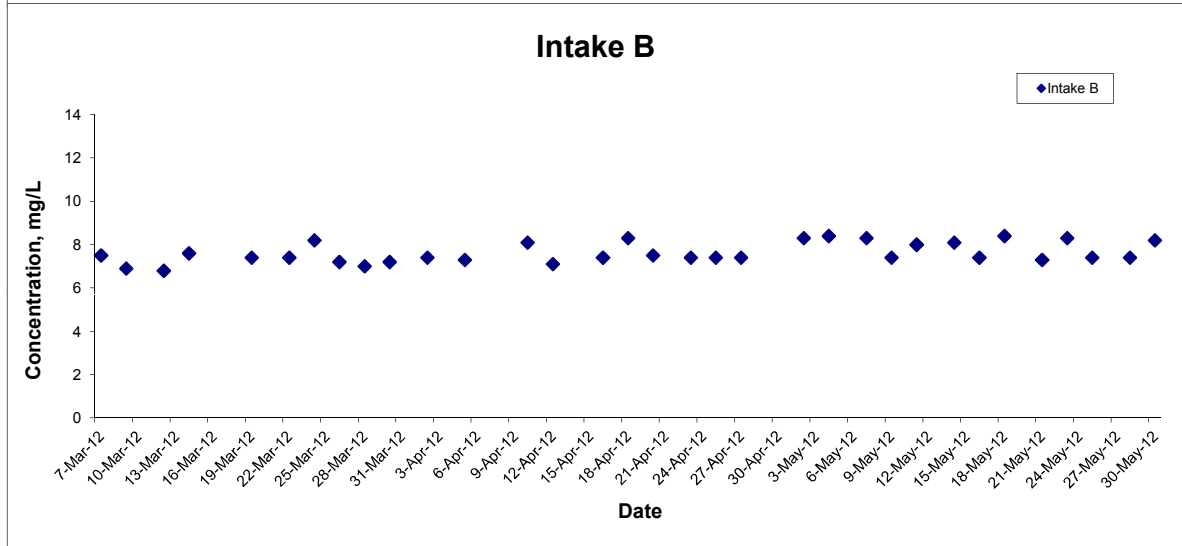
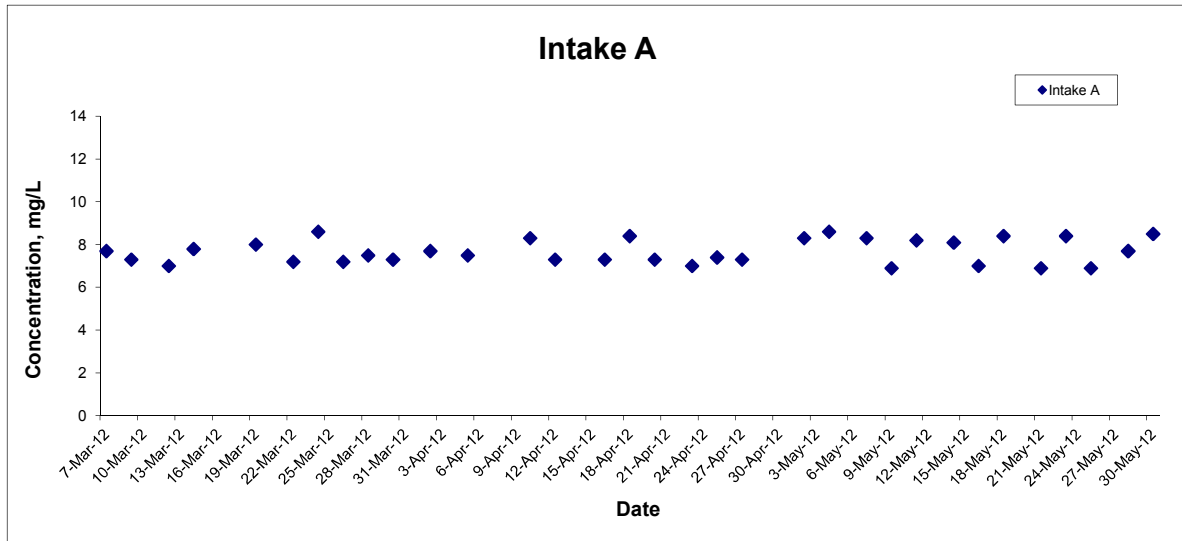
Remarks: \* DA: Depth-Averaged  
 \*\* Calm: Small or no wave; Moderate: Between calm and rough; Rough : White capped or rougher

## Dissolved Oxygen (Surface & Middle) at Mid-Ebb Tide



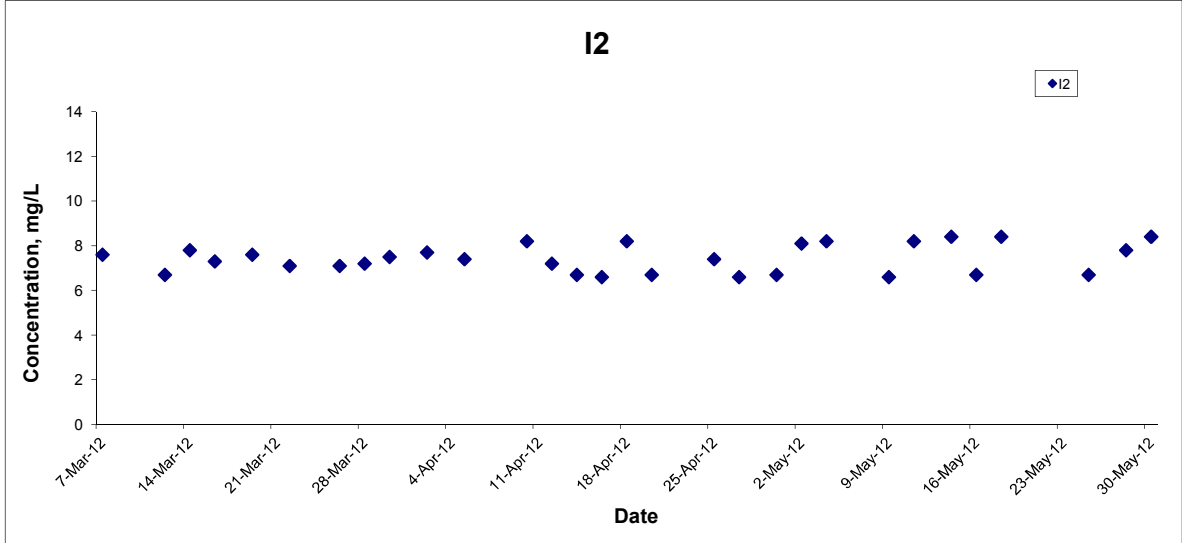
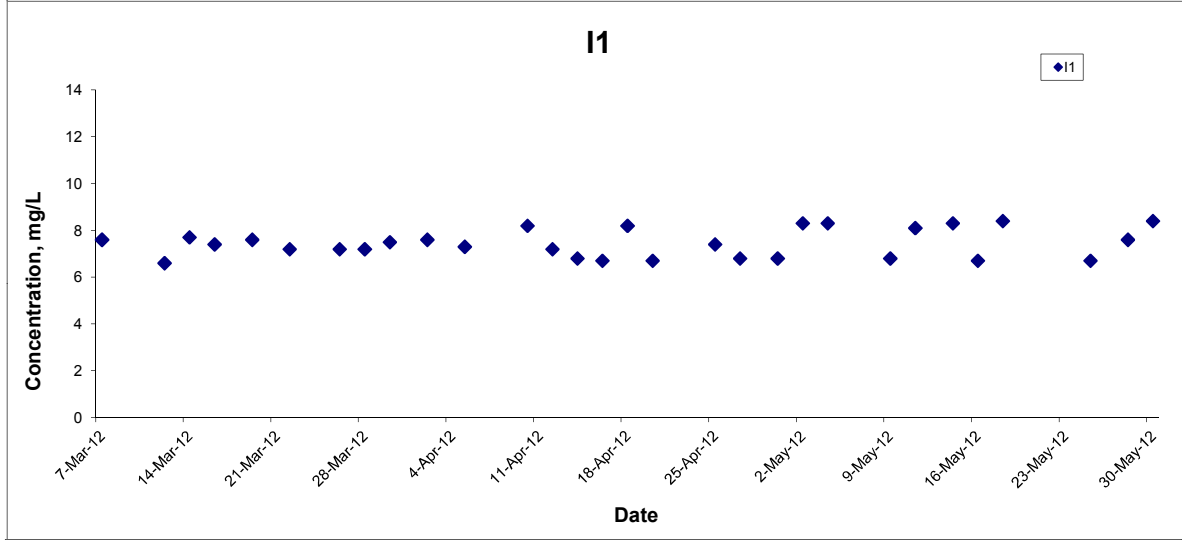
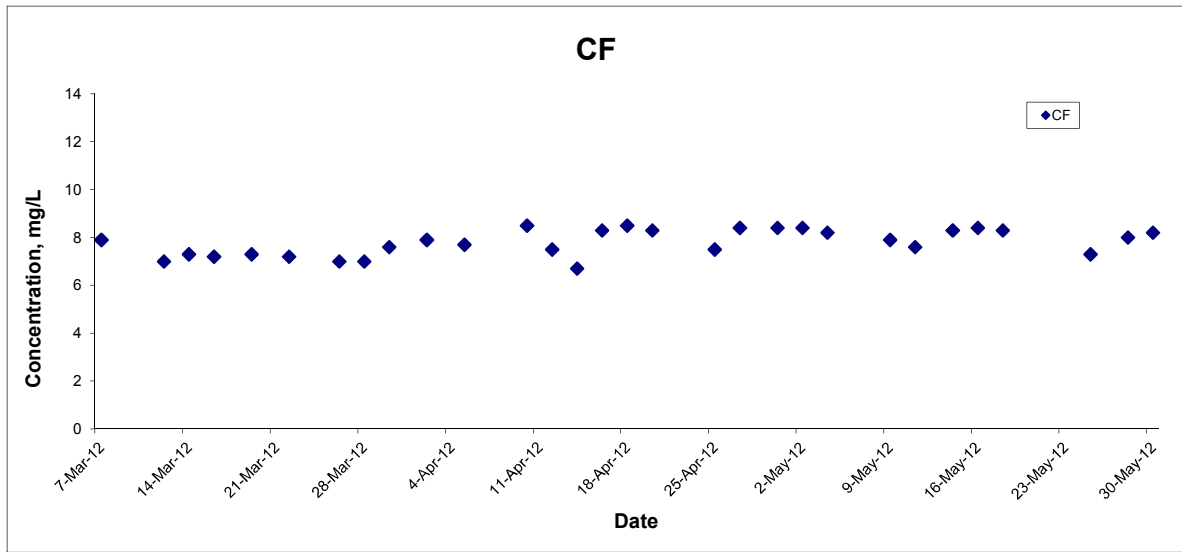
Title Contract No. DC/2007/10 Design and Construction of Hong Kong West Drainage Tunnel  Graphical Presentation of Water Quality Monitoring Results	Scale N.T.S	Project No. MA8001	
	Date May 12	Appendix P	

## Dissolved Oxygen (Surface & Middle) at Mid-Ebb Tide



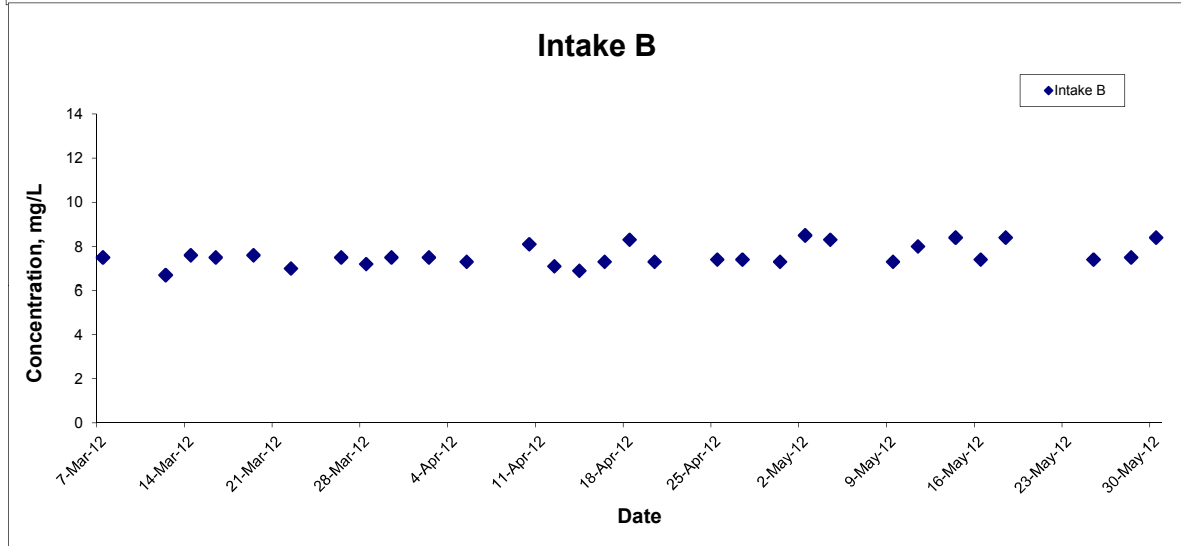
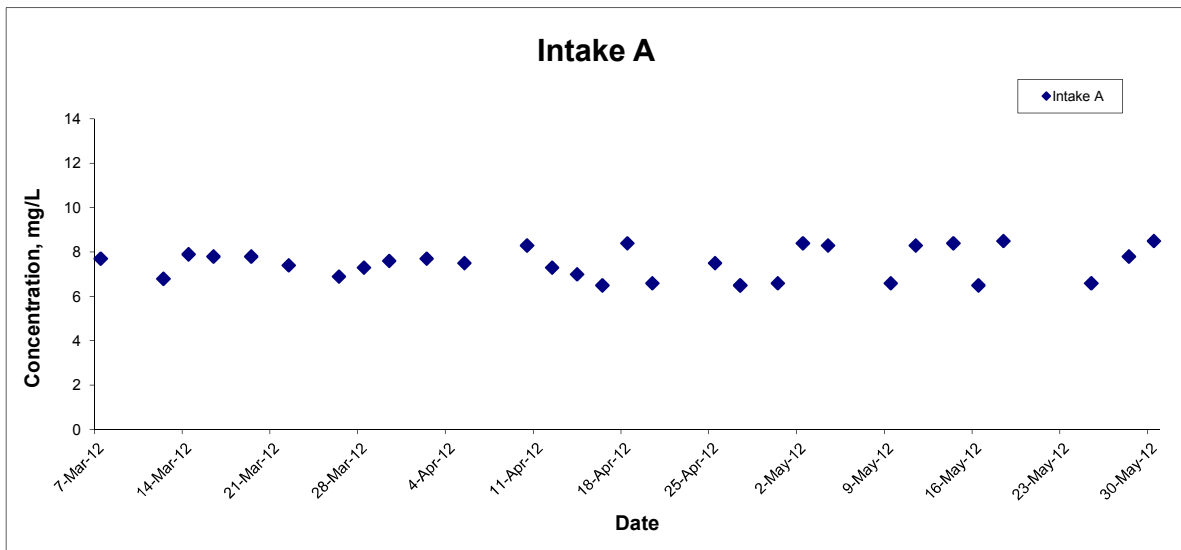
Title Contract No. DC/2007/10 Design and Construction of Hong Kong West Drainage Tunnel  Graphical Presentation of Water Quality Monitoring Results	Scale N.T.S	Project No. MA8001	CINOTECH
	Date May 12	Appendix P	

## Dissolved Oxygen (Surface & Middle) at Mid-Flood Tide



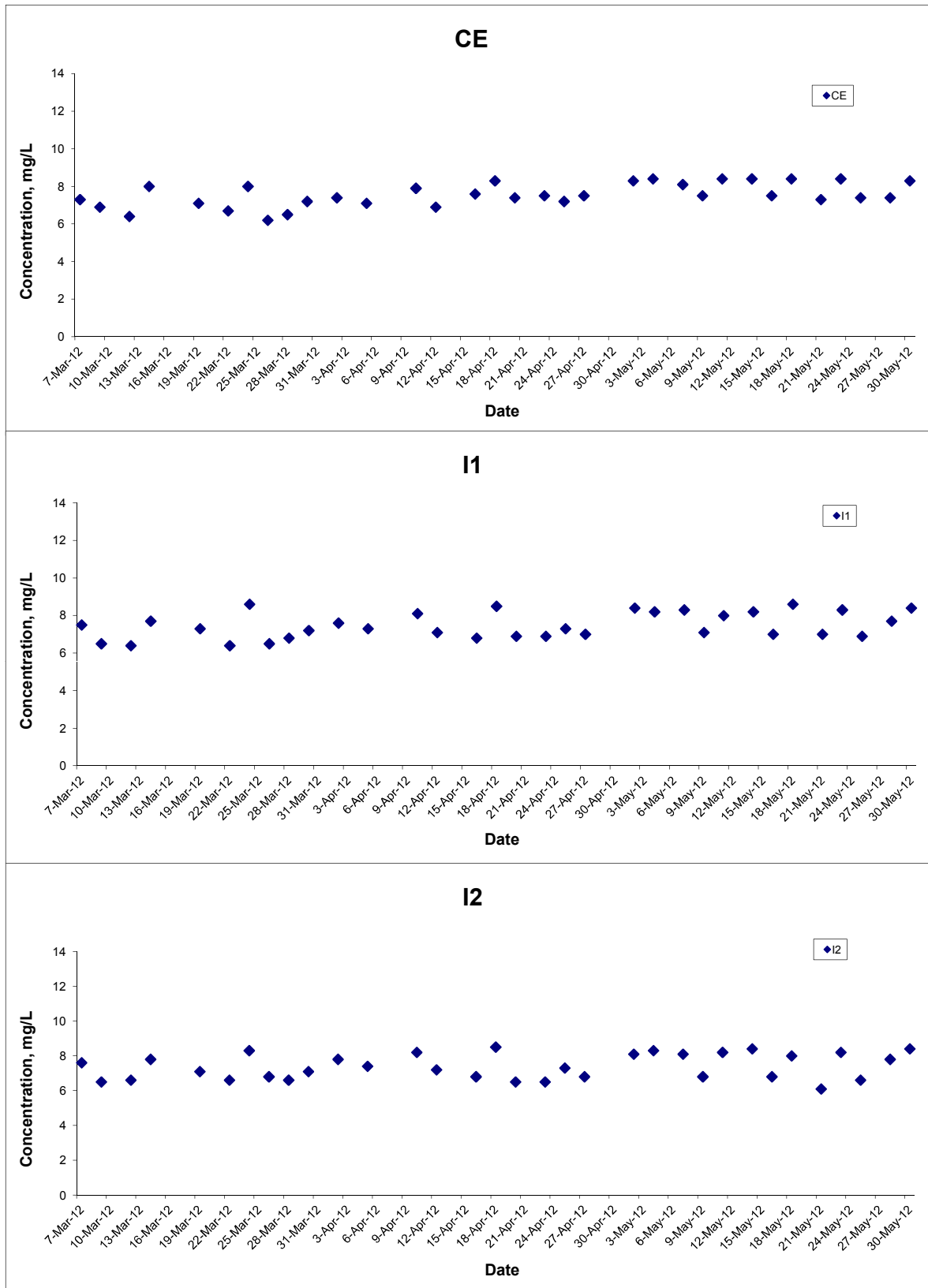
Title Contract No. DC/2007/10 Design and Construction of Hong Kong West Drainage Tunnel  Graphical Presentation of Water Quality Monitoring Results	Scale N.T.S	Project No. MA8001	
	Date May 12	Appendix P	

## Dissolved Oxygen (Surface & Middle) at Mid-Flood Tide



Title Contract No. DC/2007/10 Design and Construction of Hong Kong West Drainage Tunnel  Graphical Presentation of Water Quality Monitoring Results	Scale N.T.S	Project No. MA8001	CINOTECH
	Date May 12	Appendix P	

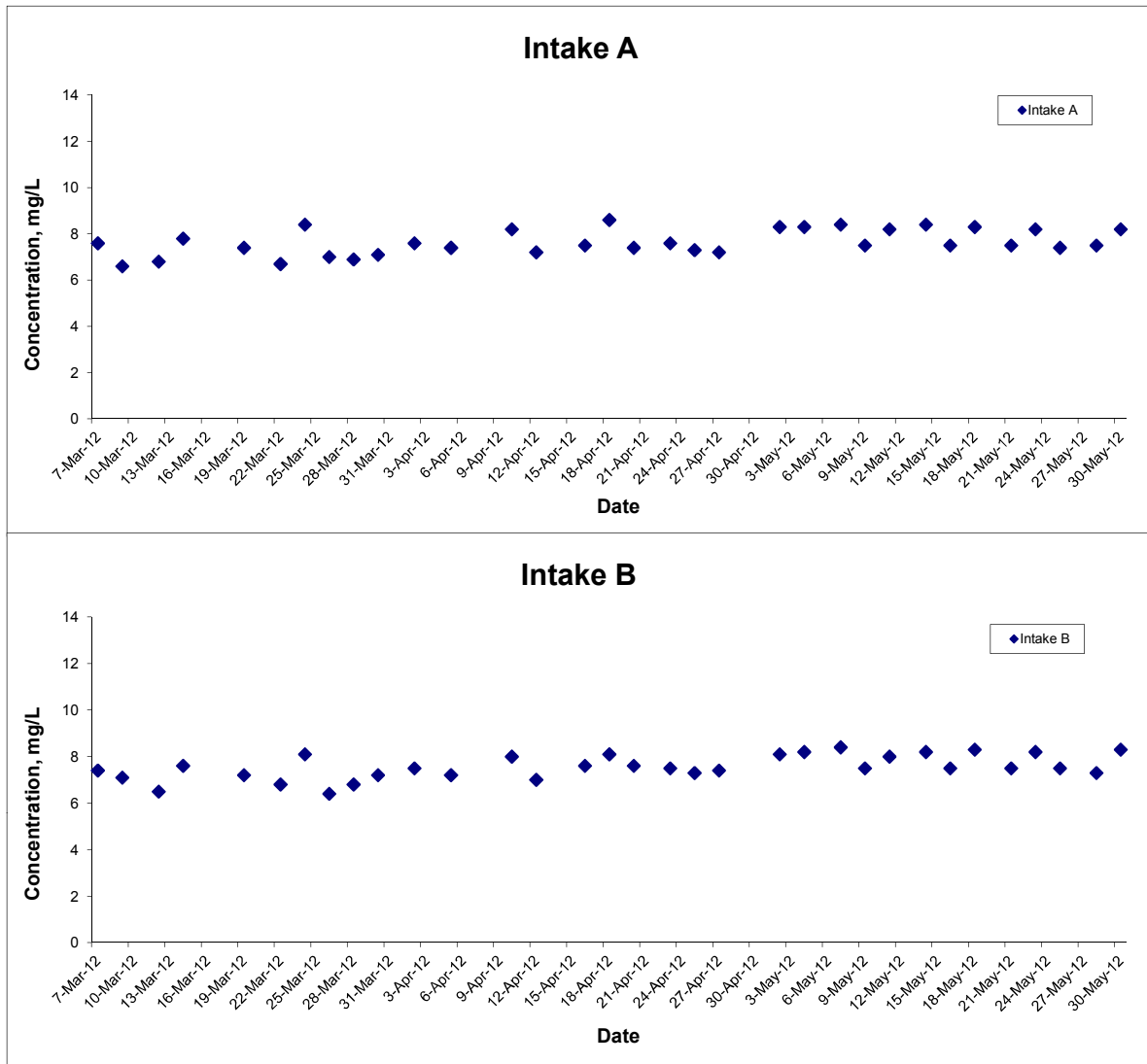
## Dissolved Oxygen (Bottom) at Mid-Ebb Tide



Title Contract No. DC/2007/10 Design and Construction of Hong Kong West Drainage Tunnel  Graphical Presentation of Water Quality Monitoring Results	Scale N.T.S	Project No. MA8001	CINOTECH
	Date May 12	Appendix P	

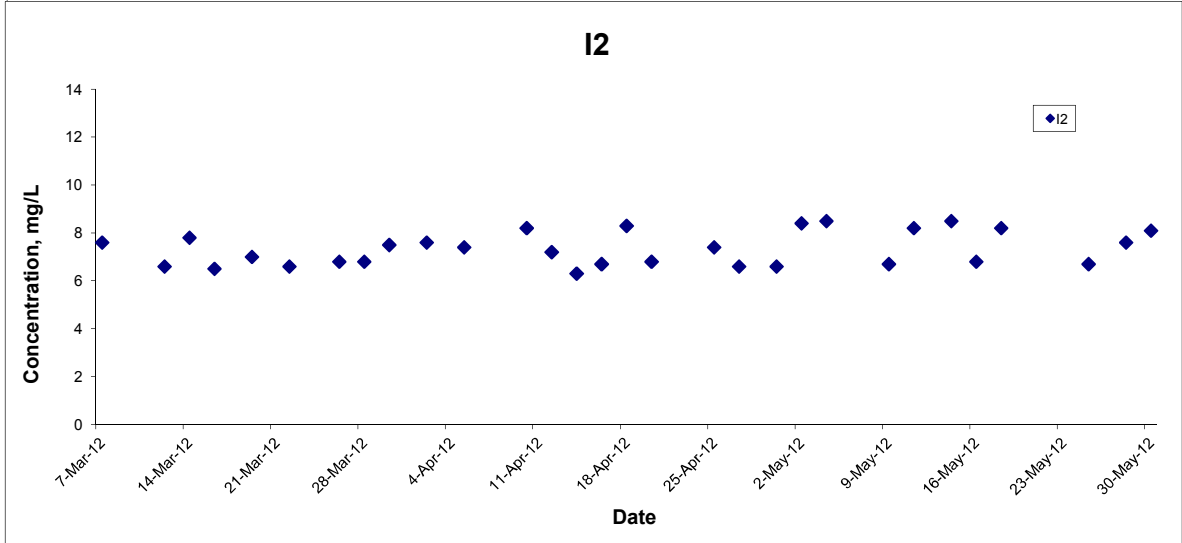
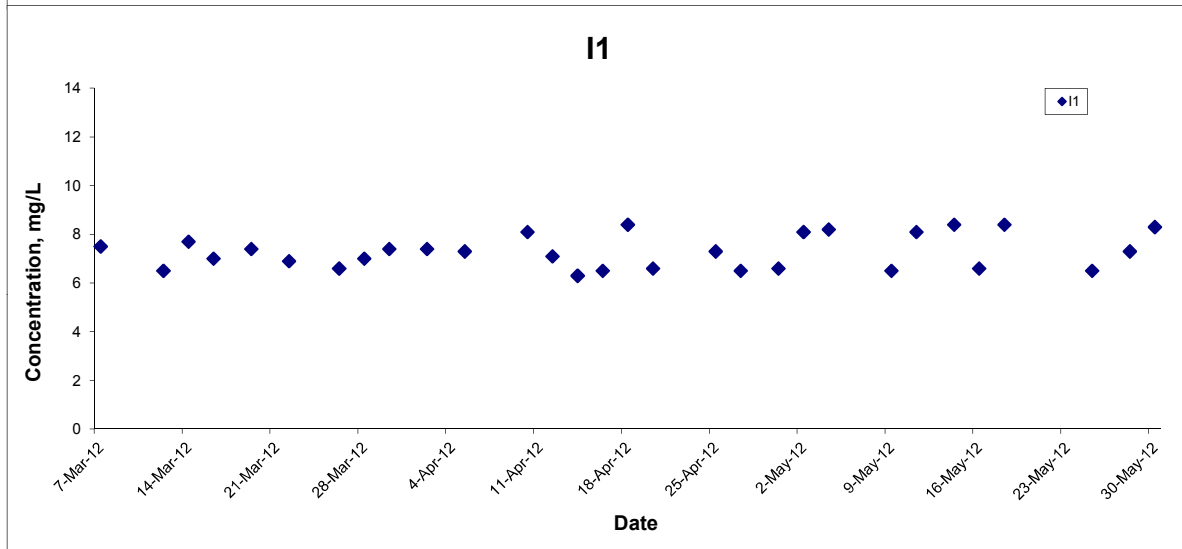
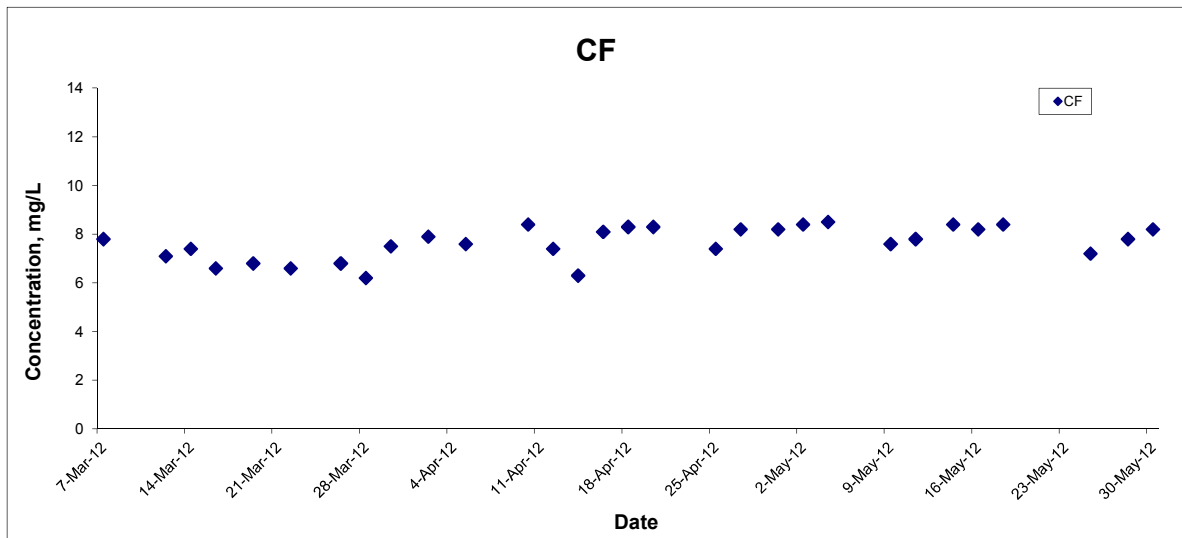


## Dissolved Oxygen (Bottom) at Mid-Ebb Tide



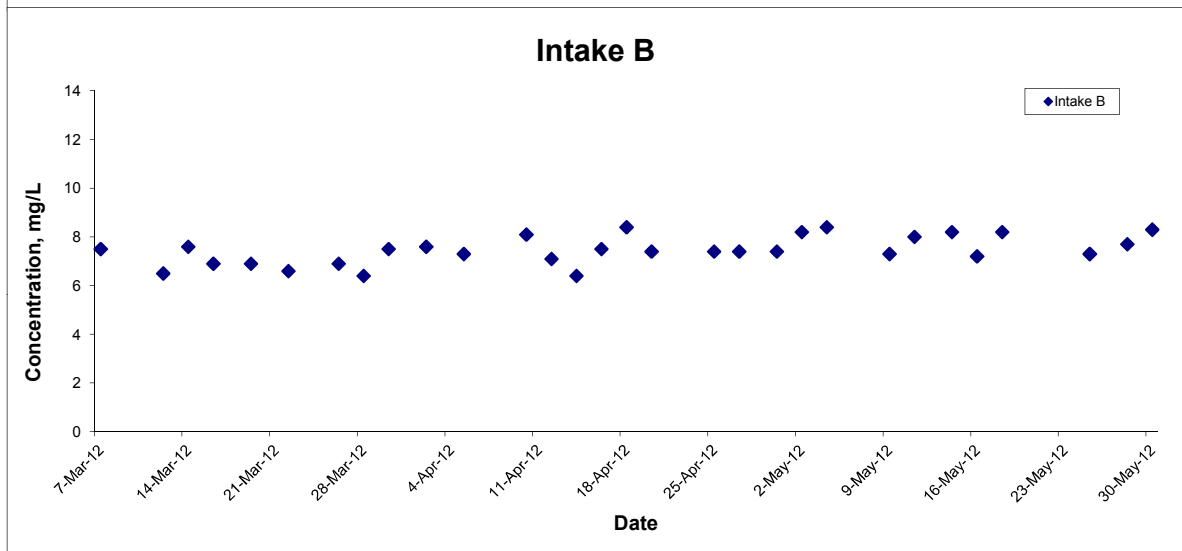
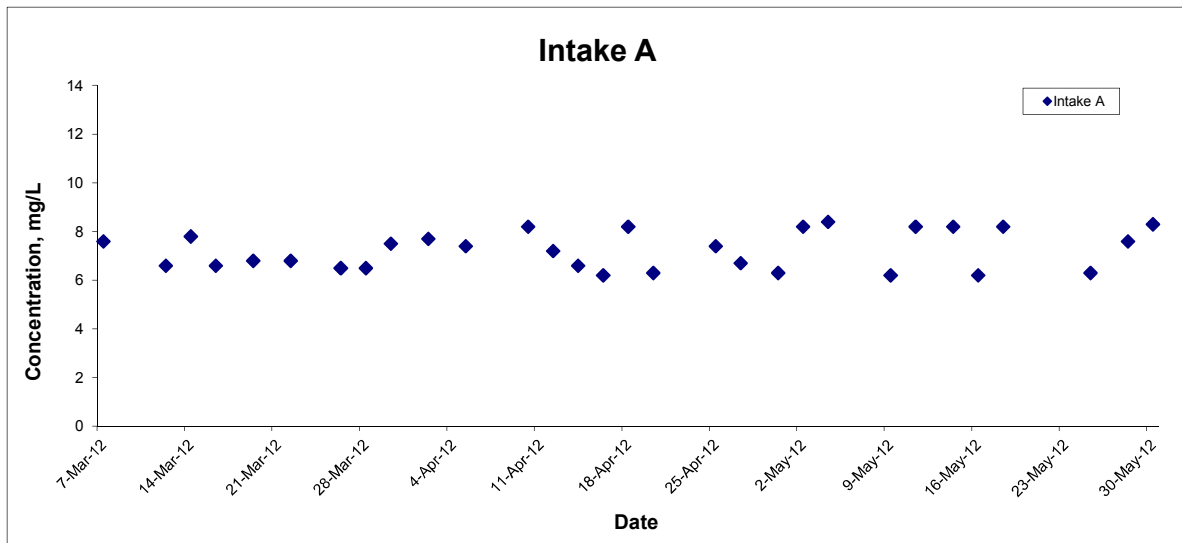
Title Contract No. DC/2007/10 Design and Construction of Hong Kong West Drainage Tunnel  Graphical Presentation of Water Quality Monitoring Results	Scale N.T.S	Project No. MA8001	
	Date May 12	Appendix P	

## Dissolved Oxygen (Bottom) at Mid-Flood Tide



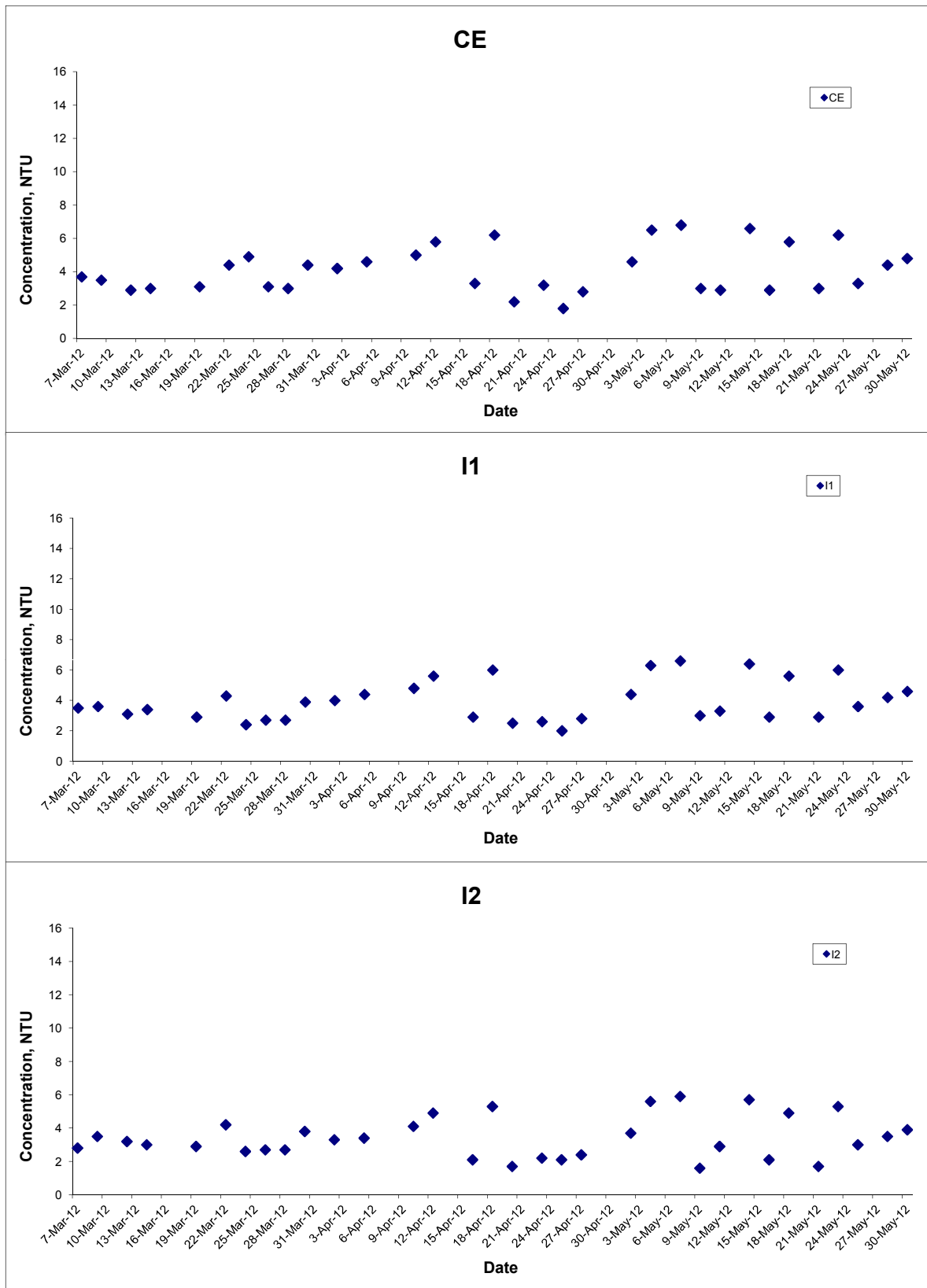
Title Contract No. DC/2007/10 Design and Construction of Hong Kong West Drainage Tunnel  Graphical Presentation of Water Quality Monitoring Results	Scale N.T.S	Project No. MA8001	CINOTECH
	Date May 12	Appendix P	

## Dissolved Oxygen (Bottom) at Mid-Flood Tide



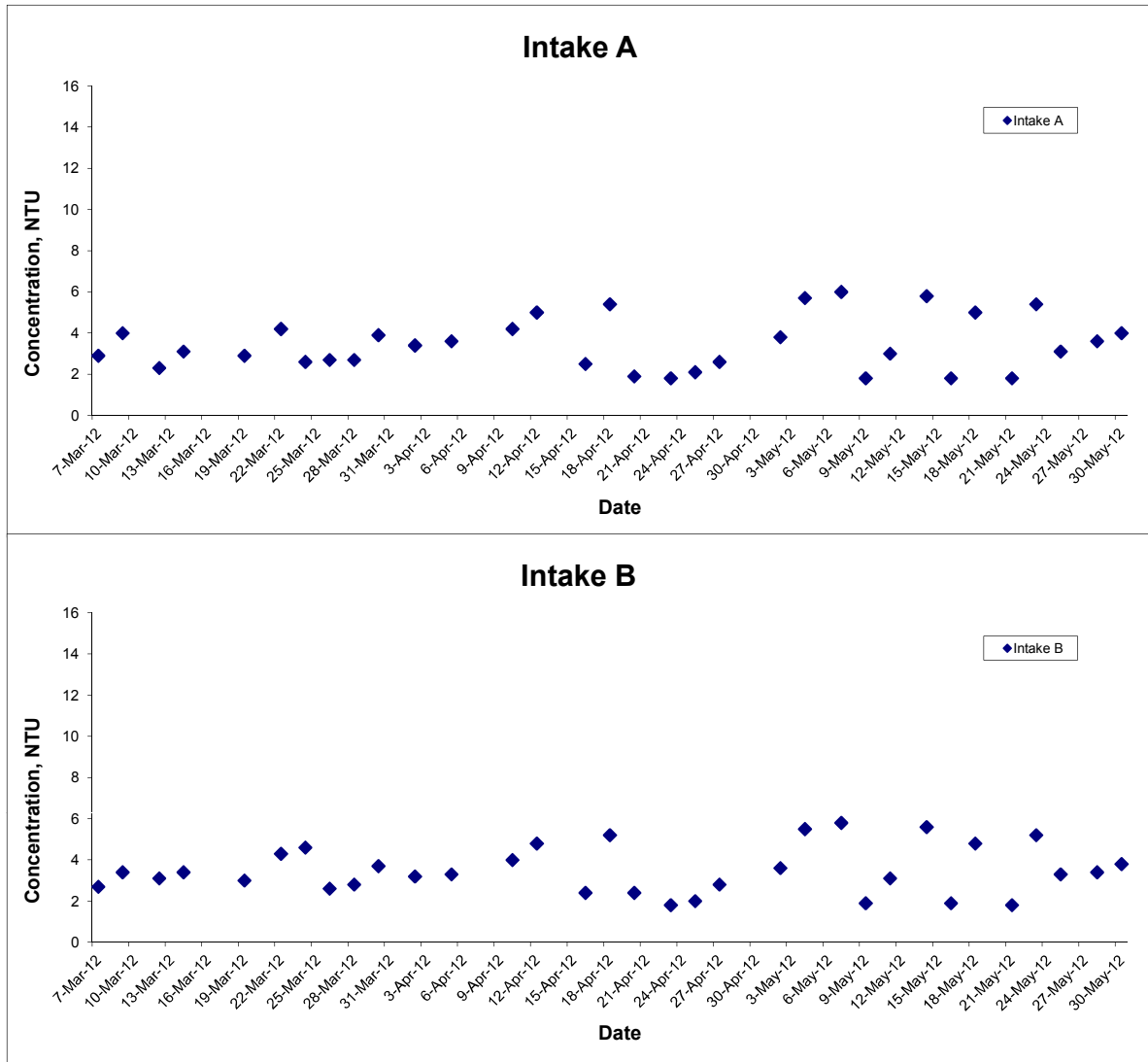
Title Contract No. DC/2007/10 Design and Construction of Hong Kong West Drainage Tunnel  Graphical Presentation of Water Quality Monitoring Results	Scale N.T.S	Project No. MA8001	
	Date May 12	Appendix P	

## Turbidity (Depth-averaged) at Mid-Ebb Tide



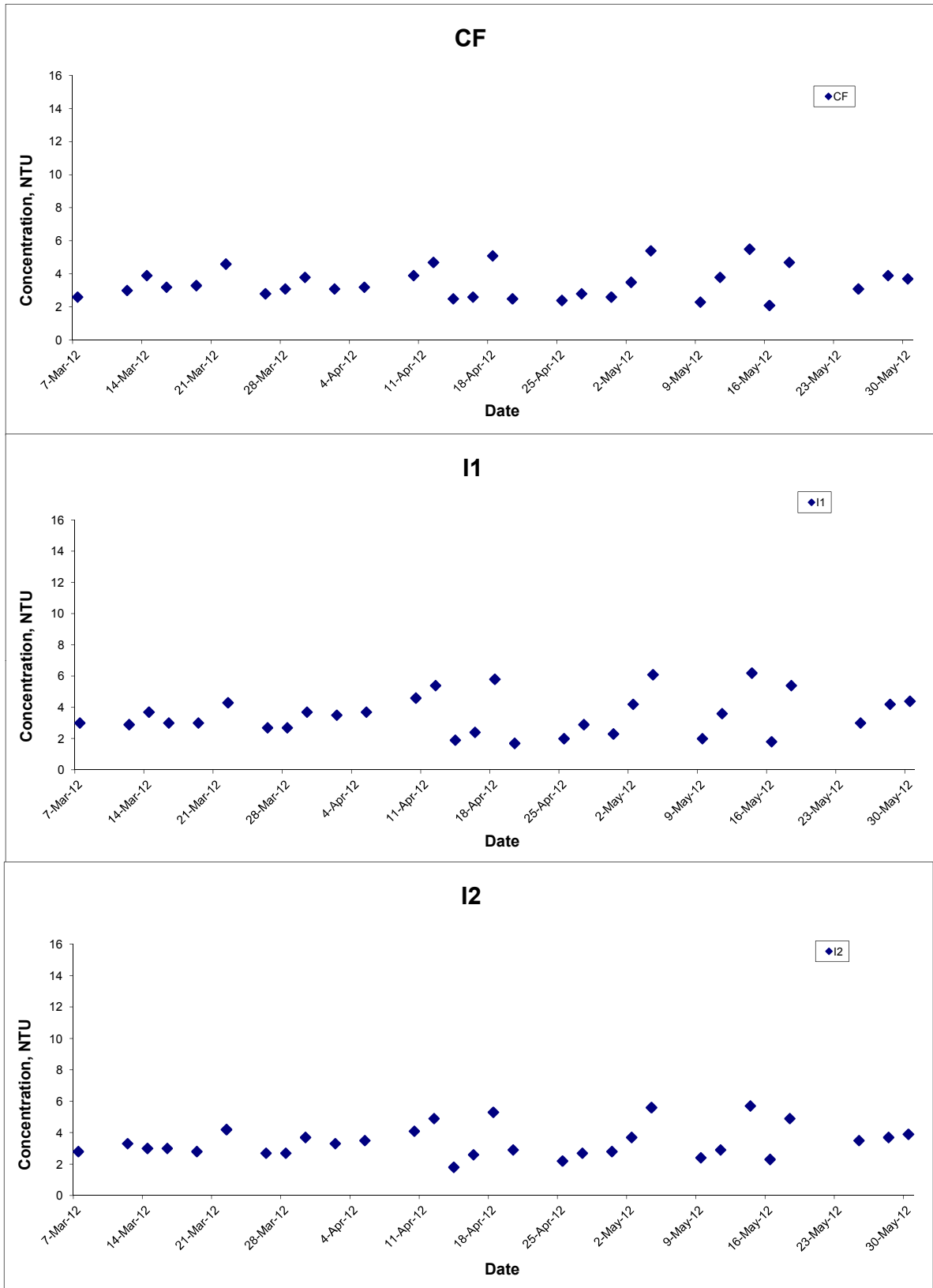
Title Contract No. DC/2007/10 Design and Construction of Hong Kong West Drainage Tunnel  Graphical Presentation of Water Quality Monitoring Results	Scale N.T.S	Project No. MA8001	
	Date May 12	Appendix P	

## Turbidity (Depth-averaged) at Mid-Ebb Tide



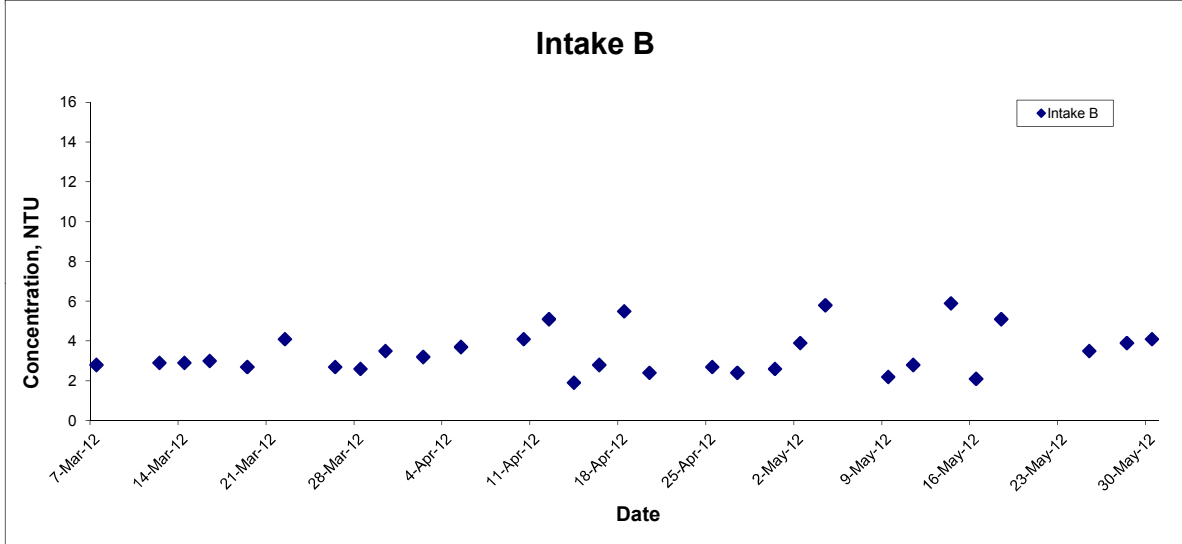
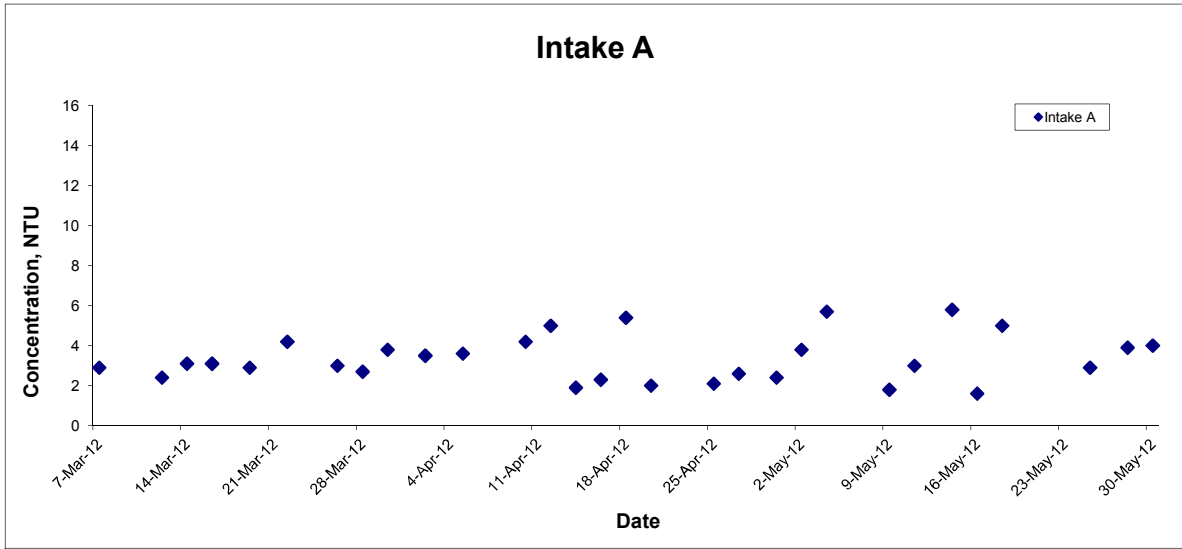
Title Contract No. DC/2007/10 Design and Construction of Hong Kong West Drainage Tunnel  Graphical Presentation of Water Quality Monitoring Results	Scale N.T.S	Project No. MA8001	
	Date May 12	Appendix P	

## Turbidity (Depth-averaged) at Mid-Flood Tide



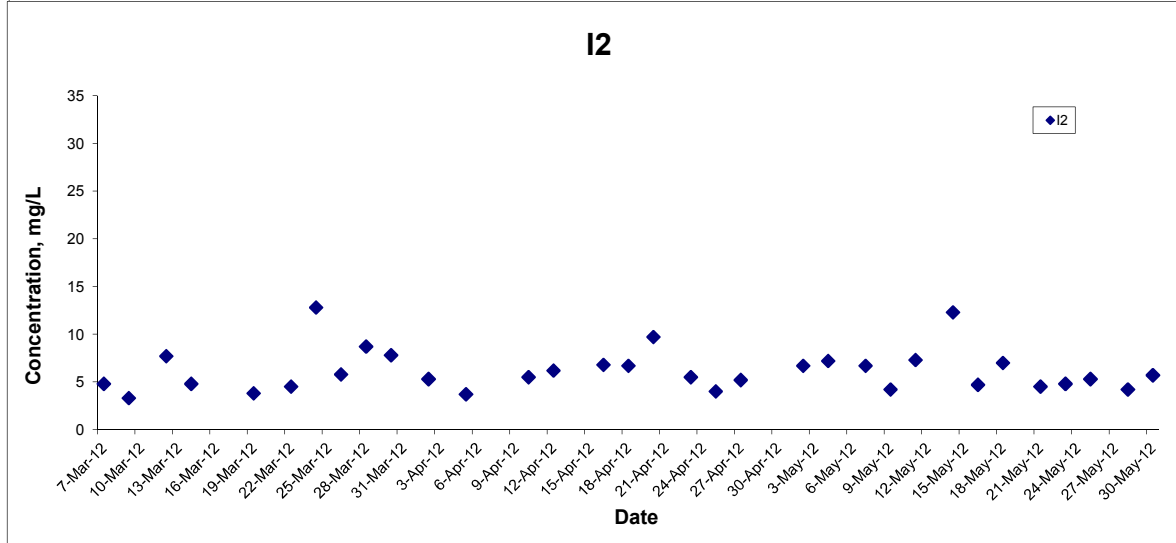
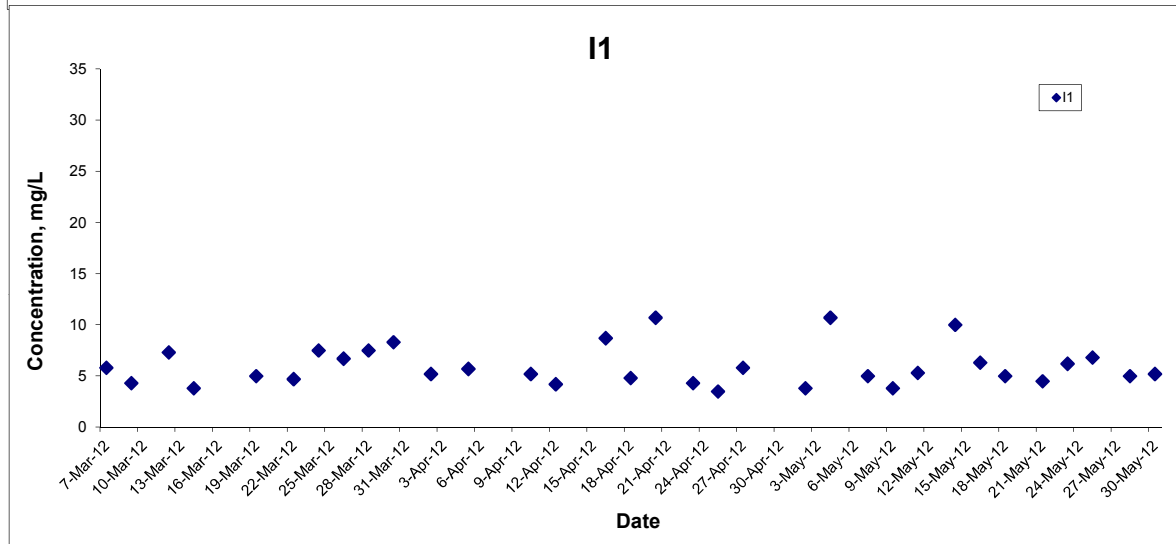
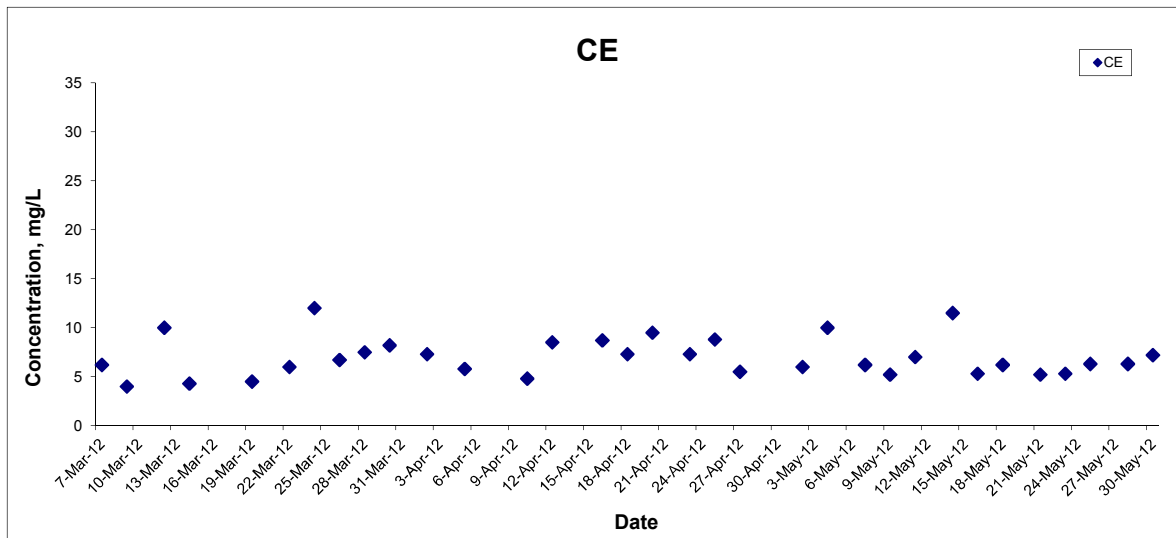
Title Contract No. DC/2007/10 Design and Construction of Hong Kong West Drainage Tunnel  Graphical Presentation of Water Quality Monitoring Results	Scale	N.T.S	Project No. MA8001	CINOTECH
	Date	May 12	Appendix P	

## Turbidity (Depth-averaged) at Mid-Flood Tide



Title Contract No. DC/2007/10 Design and Construction of Hong Kong West Drainage Tunnel  Graphical Presentation of Water Quality Monitoring Results	Scale N.T.S	Project No. MA8001	CINOTECH
	Date May 12	Appendix P	

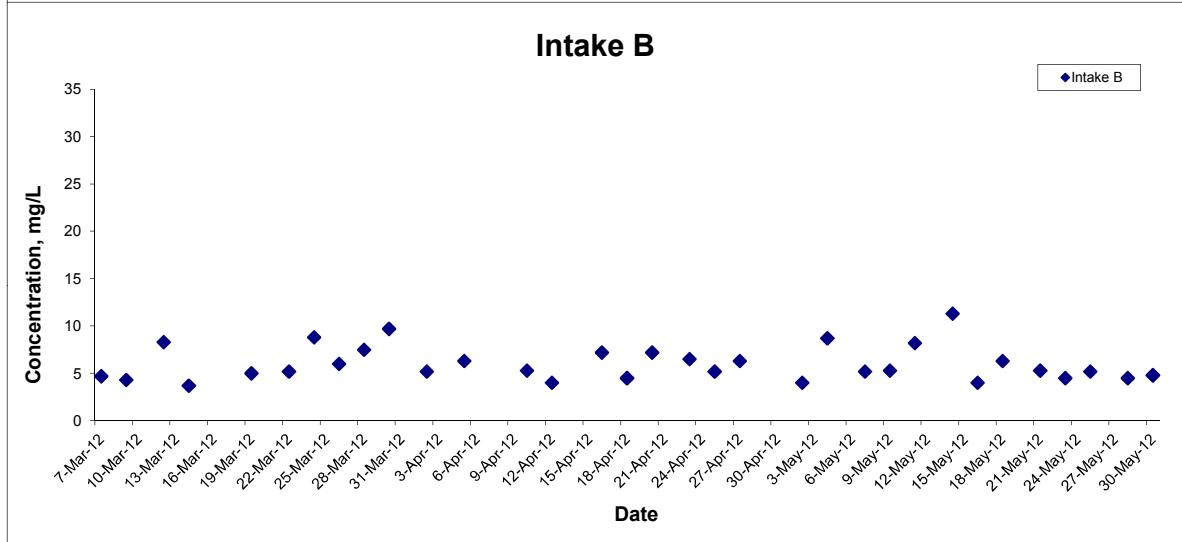
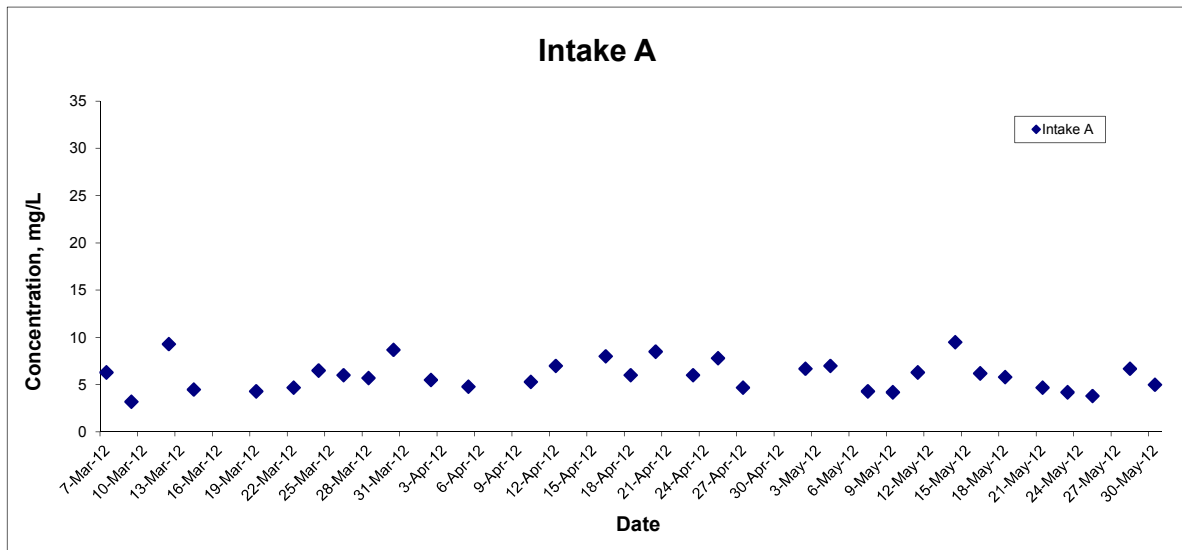
## Suspended Solids (Depth-averaged) at Mid-Ebb Tide



Title Contract No. DC/2007/10 Design and Construction of Hong Kong West Drainage Tunnel  Graphical Presentation of Water Quality Monitoring Results	Scale	N.T.S	Project No. MA8001	CINOTECH
	Date	May 12	Appendix P	

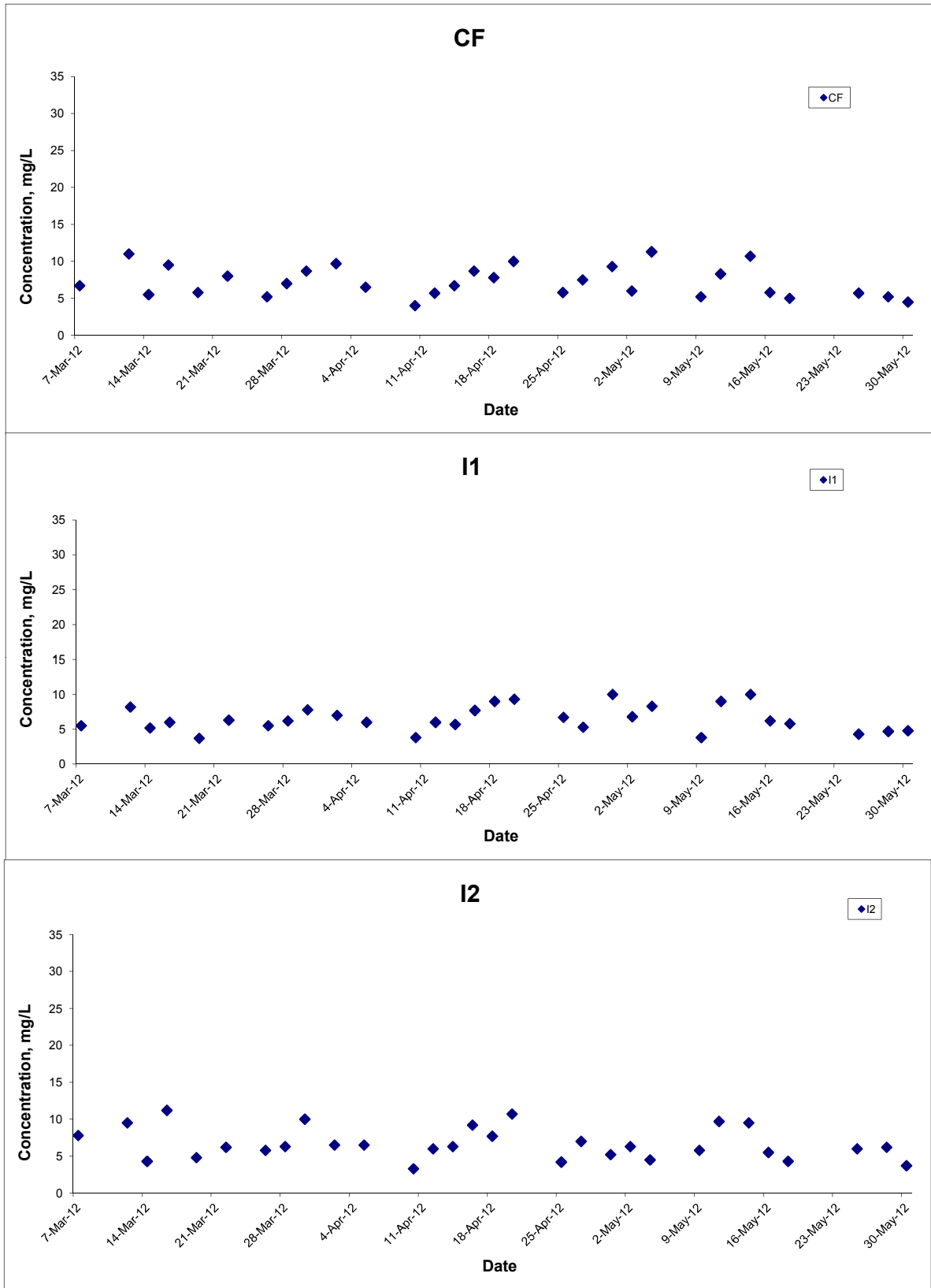


## Suspended Solids (Depth-averaged) at Mid-Ebb Tide



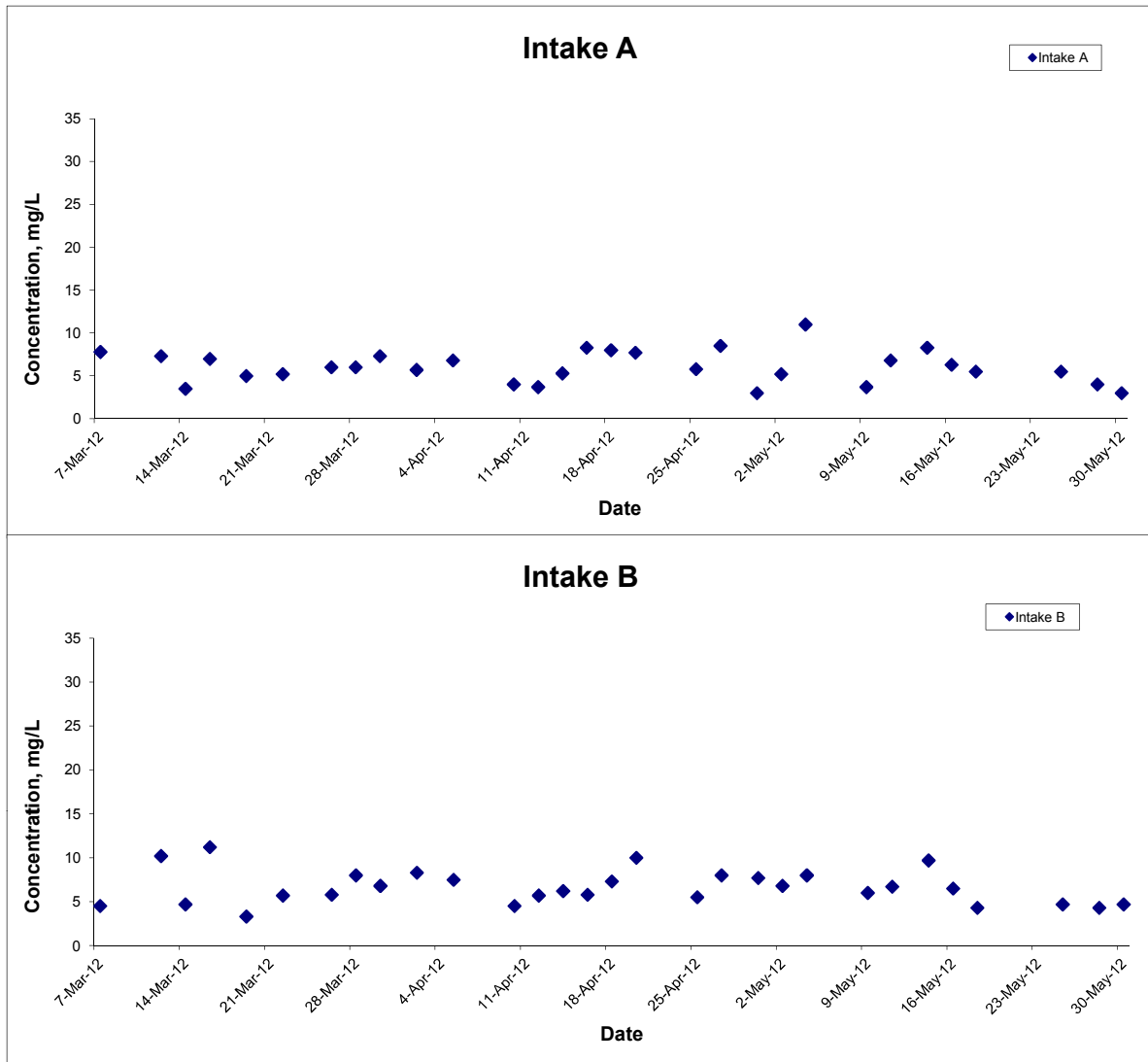
Title Contract No. DC/2007/10 Design and Construction of Hong Kong West Drainage Tunnel  Graphical Presentation of Water Quality Monitoring Results	Scale N.T.S	Project No. MA8001	CINOTECH
	Date May 12	Appendix P	

## Suspended Solids (Depth-averaged) at Mid-Flood Tide



Title Contract No. DC/2007/10 Design and Construction of Hong Kong West Drainage Tunnel  Graphical Presentation of Water Quality Monitoring Results	Scale N.T.S	Project No. MA8001	CINOTECH
	Date May 12	Appendix P	

## Suspended Solids (Depth-averaged) at Mid-Flood Tide



Title Contract No. DC/2007/10 Design and Construction of Hong Kong West Drainage Tunnel  Graphical Presentation of Water Quality Monitoring Results	Scale	N.T.S	Project No. MA8001	<b>CINOTECH</b>
	Date	May 12	Appendix P	