

### Water Quality Monitoring Results at CE - Mid-Ebb Tide

Date	Weather Condition	Sea Condition**	Sampling Time	Depth (m)		Water Temperature (°C)		pH		Salinity ppt		DO Saturation (%)		Dissolved Oxygen (mg/L)			Turbidity (NTU)			Suspended Solids (mg/L)		
						Value	Average	Value	Average	Value	Average	Value	Average	Value	Average	DA*	Value	Average	DA*	Value	Average	DA*
1-May-09	Sunny	Moderate	16:39	Surface	1	23.2	23.2	7.7	7.7	37.5	36.9	84.6	84.7	6.6	6.6	6.6	3.2	3.2	3.3	9.0	9.0	9.0
				Middle	5.5	23.3	23.3	7.7	7.7	38.2	37.8	85.0	85.2	6.6	6.6		3.4	3.5		9.0	9.0	
				Bottom	10	23.2	23.2	7.8	7.9	37.3	36.2	86.4	86.4	6.7	6.8		3.2	3.2		9.0	9.0	
4-May-09	Sunny	Moderate	09:13	Surface	1	22.8	22.8	7.8	7.8	35.0	35.5	89.9	88.9	6.4	6.3	6.4	1.9	2.0	2.6	11.0	11.0	10.2
				Middle	5.5	22.6	22.6	7.8	7.8	36.1	34.4	90.5	90.6	6.4	6.5		2.0	2.0		6.0	6.0	
				Bottom	10	22.6	22.6	7.7	7.8	34.0	33.4	89.9	89.9	6.4	6.5		3.7	3.6		14.0	13.5	
6-May-09	Sunny	Moderate	10:30	Surface	1	25.9	25.9	7.8	7.8	36.8	36.1	91.7	90.4	6.7	6.7	6.5	2.6	2.6	3.0	10.0	10.0	13.2
				Middle	5.5	25.8	25.8	7.9	8.0	36.7	36.8	84.7	84.7	6.2	6.2		2.8	2.8		18.0	18.0	
				Bottom	10	25.8	25.8	7.8	7.9	36.8	36.8	84.2	84.1	6.2	6.3		3.4	3.6		11.0	11.5	
8-May-09	Sunny	Calm	11:36	Surface	1	23.3	23.3	7.9	7.9	36.5	36.5	90.8	90.8	6.4	6.4	6.5	4.3	4.4	4.0	16.0	16.0	13.2
				Middle	5.5	23.3	23.3	7.9	7.9	36.2	36.2	91.2	91.5	6.4	6.5		3.8	3.6		12.0	12.0	
				Bottom	10	23.2	23.2	7.8	7.8	35.2	35.7	89.9	90.0	6.3	6.3		3.6	4.1		11.0	11.5	
11-May-09	Sunny	Calm	14:31	Surface	1	25.3	25.3	8.1	8.1	34.1	34.2	89.1	88.8	6.3	6.3	6.4	3.7	3.7	3.7	6.0	6.0	8.8
				Middle	5.5	25.3	25.3	8.1	8.2	35.0	34.6	89.9	90.1	6.5	6.5		3.7	3.7		9.0	9.5	
				Bottom	10	25.2	25.2	8.1	8.1	34.2	34.0	86.8	86.7	6.4	6.4		3.6	3.6		11.0	11.0	
13-May-09	Sunny	Calm	14:39	Surface	1	24.4	24.4	7.6	7.7	33.4	33.5	97.1	95.3	6.9	6.8	6.7	2.5	2.5	3.1	7.0	7.0	8.5
				Middle	6	24.3	24.3	7.9	7.8	33.5	33.6	90.2	89.4	6.5	6.5		3.3	3.3		11.0	11.0	
				Bottom	11	24.3	24.3	7.8	7.9	33.8	33.6	87.5	89.9	6.3	6.4		3.6	3.6		7.0	7.5	
15-May-09	Sunny	Calm	17:11	Surface	1	27.3	27.3	7.9	7.9	36.3	36.3	89.6	89.6	6.5	6.5	6.4	2.2	2.2	2.8	5.0	5.0	5.3
				Middle	5.5	27.2	27.2	8.1	8.1	35.1	35.1	81.6	81.6	6.2	6.2		2.5	2.5		5.0	5.0	
				Bottom	10	27.2	27.2	7.7	7.8	35.5	35.5	80.2	80.4	6.1	6.1		3.6	3.6		6.0	6.0	
18-May-09	Sunny	Moderate	08:55	Surface	1	25.6	25.7	7.7	7.8	32.8	32.8	104.2	105.2	6.7	6.8	7.0	1.3	1.3	1.8	14.0	14.0	9.3
				Middle	6	24.8	24.8	7.8	7.9	33.7	33.7	109.9	109.8	7.2	7.2		1.9	1.9		8.0	8.0	
				Bottom	11	24.6	24.6	8.0	8.0	34.0	34.0	102.5	100.7	6.7	6.7		2.0	2.1		6.0	6.0	
20-May-09	Fine	Calm	10:45	Surface	1	28.7	28.6	7.8	7.9	36.9	37.0	96.5	96.2	6.6	6.6	6.5	7.0	7.1	7.6	9.0	9.0	7.5
				Middle	5.5	28.3	28.3	7.8	7.9	36.7	36.7	93.7	93.8	6.3	6.4		7.4	7.3		8.0	8.0	
				Bottom	10	28.0	28.0	8.2	8.1	37.2	37.3	93.5	93.5	6.3	6.3		8.4	8.4		5.0	5.5	

## Water Quality Monitoring Results at CE - Mid-Ebb Tide

Date	Weather Condition	Sea Condition**	Sampling Time	Depth (m)		Water Temperature (°C)		pH		Salinity ppt		DO Saturation (%)		Dissolved Oxygen (mg/L)			Turbidity(NTU)			Suspended Solids (mg/L)		
						Value	Average	Value	Average	Value	Average	Value	Average	Value	Average	DA*	Value	Average	DA*	Value	Average	DA*
22-May-09	Cloudy	Calm	10:58	Surface	1	26.5 26.5	26.5	7.6 7.7	7.7	30.1 30.1	30.1	104.7 105.0	104.9	7.0 7.0	7.0	6.8	1.2 1.1	1.2	1.7	13.0 13.0	13.0	10.5
				Middle	6	26.1 26.1	26.1	7.9 7.9	7.9	30.8 30.8	30.8	98.3 96.6	97.5	6.5 6.4	6.5		1.9 1.9	1.9		10.0 10.0	10.0	
				Bottom	11	26.0 26.0	26.0	7.8 7.9	7.9	30.9 30.9	30.9	93.0 92.4	92.7	6.2 6.1	6.2		6.2	2.0 1.9		2.0	8.0 9.0	
25-May-09	Rainy	Moderate	13:25	Surface	1	21.2 21.2	21.2	7.9 7.9	7.9	34.7 33.1	33.9	89.9 89.9	89.9	6.4 6.4	6.4	6.4	1.9 2.1	2.0	2.2	6.0 7.0	6.5	8.0
				Middle	5.5	21.2 21.2	21.2	7.9 8.0	8.0	33.0 33.1	33.1	89.7 89.7	89.7	6.4 6.4	6.4		2.3 2.2	2.3		8.0 8.0	8.0	
				Bottom	10	21.2 21.2	21.2	7.9 7.9	7.9	35.2 35.0	35.1	89.4 89.2	89.3	6.4 6.4	6.4		6.4	2.5 2.3		2.4	10.0 9.0	
27-May-09	Cloudy	Calm	14:32	Surface	1	24.6 24.6	24.6	7.8 7.9	7.9	36.3 35.9	36.1	89.4 89.5	89.5	6.4 6.4	6.4	6.4	3.0 2.9	3.0	3.2	4.0 4.0	4.0	6.0
				Middle	5.5	24.5 24.3	24.4	8.1 8.1	8.1	34.9 36.4	35.7	88.4 88.4	88.4	6.4 6.4	6.4		2.9 2.7	2.8		6.0 6.0	6.0	
				Bottom	10	24.2 24.1	24.2	7.9 8.2	8.1	36.1 36.4	36.3	87.2 87.1	87.2	6.3 6.3	6.3		6.3	3.7 3.9		3.8	8.0 8.0	
29-May-09	Cloudy	Moderate	17:03	Surface	1	23.1 23.2	23.2	7.8 7.9	7.9	36.4 35.0	35.7	96.5 95.5	96.0	7.0 7.0	7.0	6.8	2.9 2.9	2.9	3.5	5.0 5.0	5.0	7.3
				Middle	5	23.3 23.3	23.3	8.1 8.1	8.1	36.0 36.0	36.0	89.9 89.4	89.7	6.5 6.5	6.5		3.5 3.5	3.5		8.0 8.0	8.0	
				Bottom	9	23.2 23.2	23.2	7.8 8.1	8.0	36.4 36.4	36.4	86.3 86.2	86.3	6.2 6.2	6.2		6.2	4.2 4.2		4.2	9.0 9.0	

Remarks: \* DA: Depth-Averaged  
 \*\* Calm: Small or no wave; Moderate: Between calm and rough; Rough : White capped or rougher

### Water Quality Monitoring Results at CF - Mid-Flood Tide

Date	Weather Condition	Sea Condition**	Sampling Time	Depth (m)		Water Temperature (°C)		pH		Salinity ppt		DO Saturation (%)		Dissolved Oxygen (mg/L)			Turbidity(NTU)			Suspended Solids (mg/L)					
						Value	Average	Value	Average	Value	Average	Value	Average	Value	Average	DA*	Value	Average	DA*	Value	Average	DA*			
1-May-09	Sunny	Moderate	10:06	Surface	1	22.9 22.9	22.9	7.6 7.8	7.7	36.7 37.2	37.0	105.0 103.6	104.3	8.0 7.9	8.0	8.0	3.8 4.0	3.9	3.6	11.0 11.0	11.0	8.5			
				Middle	-	-	-	-	-	-	-	-	-	-	-		-	-		-	-		-	-	-
				Bottom	3	22.8 22.8	22.8	7.9 7.8	7.9	37.2 37.8	37.5	98.8 98.7	98.8	7.6 7.6	7.6		7.6	7.6		3.2 3.2	3.2		3.2	6.0 6.0	6.0
4-May-09	Sunny	Moderate	14:09	Surface	1	23.1 23.1	23.1	7.6 7.8	7.7	35.5 35.6	35.6	97.3 96.9	97.1	6.9 6.8	6.9	6.9	2.3 2.6	2.5	3.2	4.0 4.0	4.0	10.0			
				Middle	-	-	-	-	-	-	-	-	-	-	-		-	-		-	-		-	-	-
				Bottom	3	22.8 22.8	22.8	7.9 7.8	7.9	36.5 36.5	36.5	96.3 96.3	96.3	6.8 6.8	6.8		6.8	6.8		3.7 3.8	3.8		3.8	16.0 16.0	16.0
6-May-09	Sunny	Moderate	16:51	Surface	1	26.0 26.0	26.0	8.0 8.0	8.0	36.3 36.3	36.3	93.4 91.9	92.7	6.5 6.5	6.5	6.5	3.7 3.6	3.7	3.6	8.0 8.0	8.0	7.5			
				Middle	-	-	-	-	-	-	-	-	-	-	-		-	-		-	-		-	-	-
				Bottom	3	25.9 25.9	25.9	8.2 8.1	8.2	34.1 36.4	35.3	90.0 89.9	90.0	6.4 6.4	6.4		6.4	6.4		3.4 3.4	3.4		3.4	7.0 7.0	7.0
8-May-09	Fine	Calm	16:49	Surface	1	23.6 23.6	23.6	7.9 8.0	8.0	35.5 35.4	35.5	93.7 93.6	93.7	6.5 6.5	6.5	6.5	3.2 3.2	3.2	3.9	13.0 13.0	13.0	13.2			
				Middle	-	-	-	-	-	-	-	-	-	-	-		-	-		-	-		-	-	-
				Bottom	3	23.6 23.6	23.6	8.1 8.0	8.1	36.1 36.0	36.1	93.6 93.7	93.7	6.5 6.5	6.5		6.5	6.5		4.5 4.6	4.6		4.6	15.0 15.0	15.0
11-May-09	Sunny	Calm	08:05	Surface	1	25.6 25.6	25.6	7.9 8.1	8.0	34.1 34.2	34.2	101.5 100.9	101.2	7.3 7.3	7.3	7.3	2.8 2.9	2.9	3.1	12.0 12.0	12.0	10.0			
				Middle	-	-	-	-	-	-	-	-	-	-	-		-	-		-	-		-	-	-
				Bottom	3	25.6 25.6	25.6	8.4 8.2	8.3	34.5 34.4	34.5	98.0 97.7	97.9	7.0 7.0	7.0		7.0	7.0		3.2 3.2	3.2		3.2	8.0 8.0	8.0
13-May-09	Sunny	Calm	08:08	Surface	1	24.5 24.5	24.5	7.7 8.0	7.9	32.9 33.0	33.0	98.8 96.5	97.7	6.8 6.7	6.8	6.8	2.0 1.8	1.9	2.3	7.0 7.0	7.0	7.0			
				Middle	-	-	-	-	-	-	-	-	-	-	-		-	-		-	-		-	-	-
				Bottom	3	24.5 24.5	24.5	8.3 8.1	8.2	33.5 33.4	33.5	97.0 96.7	96.9	6.6 6.7	6.7		6.7	6.7		2.7 2.7	2.7		2.7	7.0 7.0	7.0
18-May-09	Sunny	Moderate	14:13	Surface	1	26.8 26.8	26.8	7.8 7.8	7.8	32.7 32.6	32.7	104.9 106.6	105.8	6.7 6.8	6.8	6.8	1.1 1.1	1.1	1.9	6.0 6.0	6.0	6.5			
				Middle	-	-	-	-	-	-	-	-	-	-	-		-	-		-	-		-	-	-
				Bottom	3	26.8 26.8	26.8	8.1 8.2	8.2	32.7 32.7	32.7	109.5 109.6	109.6	7.0 7.0	7.0		7.0	7.0		2.5 2.6	2.6		2.6	7.0 7.0	7.0
20-May-09	Fine	Calm	15:56	Surface	1	28.7 28.7	28.7	7.9 7.9	7.9	37.2 37.3	37.3	103.1 103.0	103.1	6.9 6.9	6.9	6.9	7.3 7.3	7.3	7.4	7.0 7.0	7.0	8.0			
				Middle	-	-	-	-	-	-	-	-	-	-	-		-	-		-	-		-	-	-
				Bottom	3	28.4 28.4	28.4	7.9 8.4	8.2	36.7 36.7	36.7	103.1 102.7	102.9	7.0 7.0	7.0		7.0	7.0		7.3 7.4	7.4		7.4	9.0 9.0	9.0
22-May-09	Cloudy	Calm	16:19	Surface	1	26.5 26.5	26.5	7.8 8.0	7.9	29.6 29.6	29.6	114.6 117.9	116.3	7.6 7.9	7.8	7.8	1.1 1.1	1.1	1.5	6.0 6.0	6.0	8.0			
				Middle	-	-	-	-	-	-	-	-	-	-	-		-	-		-	-		-	-	-
				Bottom	3	26.1 26.1	26.1	8.2 8.2	8.2	30.1 30.1	30.1	109.8 107.2	108.5	7.3 7.2	7.3		7.3	7.3		1.8 1.9	1.9		1.9	10.0 10.0	10.0

## Water Quality Monitoring Results at CF - Mid-Flood Tide

Date	Weather Condition	Sea Condition**	Sampling Time	Depth (m)		Water Temperature (°C)		pH		Salinity ppt		DO Saturation (%)		Dissolved Oxygen (mg/L)			Turbidity(NTU)			Suspended Solids (mg/L)					
						Value	Average	Value	Average	Value	Average	Value	Average	Value	Average	DA*	Value	Average	DA*	Value	Average	DA*			
25-May-09	Rainy	Moderate	08:19	Surface	1	21.2 21.2	21.2	7.8 7.9	7.9	33.9 33.4	33.7	93.1 93.0	93.1	6.4 6.4	6.4	6.4	2.7 2.5	2.6	2.5	8.0 9.0	8.5	8.5			
				Middle	-	-	-	-	-	-	-	-	-	-	-		-	-		-	-		-	-	-
				Bottom	3	21.2 21.2	21.2	8.0 7.9	8.0	33.6 32.7	33.2	93.1 93.1	93.1	6.4 6.4	6.4		6.4	2.6 2.1		2.4	8.0 9.0		8.5		
27-May-09	Cloudy	Calm	08:00	Surface	1	24.5 24.4	24.5	7.9 7.9	7.9	36.0 35.1	35.6	97.3 97.2	97.3	7.0 7.0	7.0	7.0	2.9 2.8	2.9	3.0	4.0 4.0	4.0	6.0			
				Middle	-	-	-	-	-	-	-	-	-	-	-		-	-		-	-		-	-	
				Bottom	3	24.4 24.4	24.4	8.0 8.1	8.1	35.2 35.7	35.5	96.6 97.1	96.9	7.0 7.0	7.0		7.0	3.1 3.1		3.1	8.0 8.0		8.0		
29-May-09	Cloudy	Moderate	09:23	Surface	1	23.5 23.5	23.5	7.8 8.0	7.9	35.4 35.3	35.4	98.1 97.6	97.9	7.1 7.1	7.1	7.1	3.6 3.6	3.6	3.7	6.0 6.0	6.0	7.0			
				Middle	-	-	-	-	-	-	-	-	-	-	-		-	-		-	-		-	-	
				Bottom	3	23.4 23.4	23.4	8.2 8.1	8.2	35.7 35.7	35.7	85.8 85.5	85.7	6.2 6.2	6.2		6.2	3.7 3.8		3.8	8.0 8.0		8.0		

Remarks: \* DA: Depth-Averaged  
 \*\* Calm: Small or no wave; Moderate: Between calm and rough; Rough : White capped or rougher

### Water Quality Monitoring Results at I1 - Mid-Ebb Tide

Date	Weather Condition	Sea Condition**	Sampling Time	Depth (m)		Water Temperature (°C)		pH		Salinity ppt		DO Saturation (%)		Dissolved Oxygen (mg/L)			Turbidity (NTU)			Suspended Solids (mg/L)			
						Value	Average	Value	Average	Value	Average	Value	Average	Value	Average	DA*	Value	Average	DA*	Value	Average	DA*	
1-May-09	Sunny	Moderate	16:56	Surface	1	22.9 22.9	22.9	7.6 7.6	7.6	33.1 33.6	33.4	87.6 86.8	87.2	6.9 6.7	6.8	6.8	3.4 3.5	3.5	3.7	9.0 10.0	9.5	9.2	
				Middle	4.5	22.8 22.8	22.8	7.6 7.6	7.6	37.0 37.0	37.0	86.0 86.1	86.1	6.7 6.7	6.7		6.7	3.5 3.6		3.6	11.0 11.0		11.0
				Bottom	8	22.8 22.8	22.8	7.6 7.6	7.6	37.0 36.7	36.9	86.2 86.3	86.3	6.7 6.7	6.7		6.7	4.2 3.6		3.9	7.0 7.0		7.0
4-May-09	Sunny	Moderate	09:22	Surface	1	22.6 22.6	22.6	7.8 7.8	7.8	35.4 35.3	35.4	88.7 88.7	88.7	6.3 6.3	6.3	6.4	2.6 2.6	2.6	3.0	7.0 7.0	7.0	5.2	
				Middle	4.5	22.6 22.6	22.6	7.7 7.6	7.7	35.2 35.6	35.4	89.4 90.0	89.7	6.4 6.4	6.4		6.4	3.1 3.1		3.1	5.0 5.0		5.0
				Bottom	8	22.7 22.7	22.7	7.9 7.8	7.9	35.1 32.4	33.8	89.5 89.9	89.7	6.3 6.5	6.4		6.4	3.2 3.1		3.2	3.0 4.0		3.5
6-May-09	Sunny	Moderate	10:39	Surface	1	25.9 26.0	26.0	7.9 7.9	7.9	33.5 36.8	35.2	84.7 84.8	84.8	6.4 6.3	6.4	6.4	3.0 3.4	3.2	3.3	7.0 7.0	7.0	11.3	
				Middle	4.5	25.9 25.9	25.9	8.0 7.9	8.0	36.9 35.9	36.4	85.1 85.5	85.3	6.4 6.4	6.4		6.4	3.2 3.4		3.3	12.0 12.0		12.0
				Bottom	8	25.9 25.9	25.9	8.1 8.0	8.1	37.1 34.9	36.0	85.0 84.9	85.0	6.3 6.3	6.3		6.3	3.5 3.3		3.4	15.0 15.0		15.0
8-May-09	Sunny	Calm	11:47	Surface	1	23.4 23.3	23.4	7.9 7.8	7.9	35.6 36.0	35.8	90.8 90.7	90.8	6.4 6.4	6.4	6.4	4.5 4.8	4.7	4.5	9.0 9.0	9.0	11.3	
				Middle	4.5	23.4 23.3	23.4	8.0 7.9	8.0	36.5 36.6	36.6	90.6 91.3	91.0	6.4 6.4	6.4		6.4	4.6 4.6		4.6	10.0 10.0		10.0
				Bottom	8	23.2 23.2	23.2	7.9 7.9	7.9	36.7 36.7	36.7	89.4 89.3	89.4	6.2 6.2	6.2		6.2	4.2 4.3		4.3	15.0 15.0		15.0
11-May-09	Sunny	Calm	14:14	Surface	1	25.4 25.3	25.4	7.9 7.9	7.9	32.5 33.1	32.8	91.5 90.4	91.0	6.5 6.5	6.5	6.6	3.4 3.4	3.4	3.5	6.0 6.0	6.0	8.3	
				Middle	4.5	25.4 25.3	25.4	7.9 7.9	7.9	34.4 34.5	34.5	91.3 91.2	91.3	6.6 6.6	6.6		6.6	3.5 3.4		3.5	10.0 10.0		10.0
				Bottom	8	25.2 25.2	25.2	8.0 8.1	8.1	34.6 33.4	34.0	88.8 88.8	88.8	6.4 6.5	6.5		6.5	3.3 3.6		3.5	9.0 9.0		9.0
13-May-09	Sunny	Calm	14:08	Surface	1	24.5 24.5	24.5	8.0 7.8	7.9	32.9 32.9	32.9	97.1 96.2	96.7	6.7 6.7	6.7	6.7	2.1 2.0	2.1	2.3	12.0 12.0	12.0	9.3	
				Middle	4.5	24.5 24.5	24.5	8.0 7.8	7.9	33.1 33.1	33.1	93.7 93.6	93.7	6.6 6.5	6.6		6.6	2.4 2.3		2.4	8.0 8.0		8.0
				Bottom	8	24.4 24.4	24.4	8.0 7.8	7.9	33.3 33.5	33.4	87.0 87.0	87.0	6.3 6.3	6.3		6.3	2.5 2.4		2.5	8.0 8.0		8.0
15-May-09	Sunny	Calm	16:36	Surface	1	27.4 27.4	27.4	7.9 7.9	7.9	36.9 36.9	36.9	94.0 94.2	94.1	7.0 7.0	7.0	7.0	2.3 2.4	2.4	2.5	5.0 5.0	5.0	5.5	
				Middle	5	27.5 27.5	27.5	7.9 7.8	7.9	36.8 36.7	36.8	93.7 93.7	93.7	6.9 6.9	6.9		6.9	2.6 2.6		2.6	7.0 6.0		6.5
				Bottom	9	27.5 27.5	27.5	8.0 7.9	8.0	36.7 36.7	36.7	93.2 93.2	93.2	6.9 6.9	6.9		6.9	2.6 2.6		2.6	5.0 5.0		5.0
18-May-09	Sunny	Moderate	08:35	Surface	1	25.8 25.7	25.8	8.1 7.8	8.0	33.1 33.2	33.2	96.5 97.7	97.1	6.5 6.6	6.6	6.7	1.6 1.7	1.7	2.1	7.0 7.0	7.0	9.2	
				Middle	4.5	24.9 24.9	24.9	8.0 7.9	8.0	33.8 33.8	33.8	97.8 97.1	97.5	6.7 6.6	6.7		6.7	1.7 1.8		1.8	12.0 11.0		11.5
				Bottom	8	24.6 24.6	24.6	8.0 7.9	8.0	33.9 33.9	33.9	92.7 91.7	92.2	6.3 6.3	6.3		6.3	2.6 2.8		2.7	9.0 9.0		9.0
20-May-09	Fine	Calm	10:27	Surface	1	29.3 29.3	29.3	8.5 7.9	8.2	36.5 36.6	36.6	94.0 95.4	94.7	6.2 6.3	6.3	6.4	6.7 6.8	6.8	7.4	9.0 9.0	9.0	6.0	
				Middle	4.5	28.7 28.7	28.7	8.3 8.5	8.4	36.7 36.8	36.8	94.9 94.6	94.8	6.4 6.3	6.4		6.4	7.4 7.6		7.5	5.0 5.0		5.0
				Bottom	8	28.5 28.5	28.5	8.1 7.9	8.0	37.0 37.0	37.0	93.0 92.9	93.0	6.3 6.2	6.3		6.3	8.0 7.9		8.0	4.0 4.0		4.0

## Water Quality Monitoring Results at I1 - Mid-Ebb Tide

Date	Weather Condition	Sea Condition**	Sampling Time	Depth (m)		Water Temperature (°C)		pH		Salinity ppt		DO Saturation (%)		Dissolved Oxygen (mg/L)			Turbidity (NTU)			Suspended Solids (mg/L)		
						Value	Average	Value	Average	Value	Average	Value	Average	Value	Average	DA*	Value	Average	DA*	Value	Average	DA*
22-May-09	Cloudy	Calm	10:38	Surface	1	26.6 26.5	26.6	7.7 7.7	7.7	29.9 29.9	29.9	104.2 106.0	105.1	6.9 7.0	7.0	6.6	1.0 1.1	1.1	1.6	9.0 9.0	9.0	8.3
				Middle	4.5	26.0 26.0	26.0	7.7 7.7	7.7	30.9 31.0	31.0	92.5 91.0	91.8	6.2 6.0	6.1		1.6 1.6	1.6		10.0 10.0	10.0	
				Bottom	8	25.8 25.8	25.8	7.8 7.7	7.8	31.3 31.3	31.3	91.2 90.8	91.0	6.2 6.1	6.2		2.0 2.0	2.0		2.0 2.0	2.0	
25-May-09	Rainy	Moderate	13:37	Surface	1	21.2 21.2	21.2	7.9 7.9	7.9	33.2 33.1	33.2	92.0 92.6	92.3	6.6 6.6	6.6	6.7	3.0 3.1	3.1	2.6	10.0 10.0	10.0	8.2
				Middle	4.5	21.2 21.2	21.2	8.0 8.0	8.0	33.2 33.3	33.3	94.1 94.0	94.1	6.7 6.7	6.7		2.4 2.2	2.3		7.0 8.0	7.5	
				Bottom	8	21.2 21.2	21.2	8.1 8.0	8.1	34.4 34.5	34.5	93.2 92.8	93.0	6.6 6.7	6.7		2.1 2.6	2.4		7.0 7.0	7.0	
27-May-09	Cloudy	Calm	14:11	Surface	1	24.4 24.4	24.4	7.8 7.7	7.8	34.9 35.3	35.1	87.3 87.3	87.3	6.4 6.4	6.4	6.5	2.8 2.8	2.8	2.7	6.0 6.0	6.0	7.0
				Middle	4.5	24.1 24.1	24.1	7.8 7.9	7.9	36.0 36.4	36.2	87.8 87.0	87.4	6.5 6.4	6.5		2.3 2.2	2.3		6.0 6.0	6.0	
				Bottom	8	24.0 24.0	24.0	8.1 8.0	8.1	35.0 35.9	35.5	84.8 84.8	84.8	6.2 6.2	6.2		2.9 3.3	3.1		9.0 9.0	9.0	
29-May-09	Cloudy	Moderate	16:32	Surface	1	23.2 23.3	23.3	8.0 8.0	8.0	35.9 36.1	36.0	92.9 93.0	93.0	6.7 6.7	6.7	6.5	3.5 3.6	3.6	4.0	8.0 8.0	8.0	7.3
				Middle	4.5	23.3 23.3	23.3	7.9 7.8	7.9	36.2 36.3	36.3	87.9 88.1	88.0	6.3 6.3	6.3		4.3 4.3	4.3		7.0 7.0	7.0	
				Bottom	8	23.3 23.3	23.3	8.1 8.0	8.1	36.4 36.4	36.4	86.4 86.3	86.4	6.2 6.2	6.2		4.0 4.1	4.1		7.0 7.0	7.0	

Remarks: \* DA: Depth-Averaged  
 \*\* Calm: Small or no wave; Moderate: Between calm and rough; Rough : White capped or rougher

### Water Quality Monitoring Results at I1 - Mid-Flood Tide

Date	Weather Condition	Sea Condition**	Sampling Time	Depth (m)		Water Temperature (°C)		pH		Salinity ppt		DO Saturation (%)		Dissolved Oxygen (mg/L)			Turbidity(NTU)			Suspended Solids (mg/L)		
						Value	Average	Value	Average	Value	Average	Value	Average	Value	Average	DA*	Value	Average	DA*	Value	Average	DA*
1-May-09	Sunny	Moderate	10:16	Surface	1	23.1 23.1	23.1	7.7 7.7	7.7	34.4 37.3	35.9	86.0 85.8	85.9	6.8 6.7	6.8	6.8	3.7 4.0	3.9	3.9	8.0 7.0	7.5	9.2
				Middle	4.5	22.9 22.9	22.9	7.8 7.8	7.8	37.4 36.4	36.9	85.3 85.5	85.4	6.6 6.7	6.7		3.5 3.6	3.6		7.0 7.0	7.0	
				Bottom	8	22.9 22.8	22.9	7.8 7.9	7.9	37.3 37.3	37.3	86.1 86.6	86.4	6.7 6.7	6.7		4.1 4.1	4.1		13.0 13.0	13.0	
4-May-09	Sunny	Moderate	14:23	Surface	1	23.2 23.1	23.2	7.6 7.6	7.6	36.1 36.2	36.2	88.9 88.8	88.9	6.3 6.2	6.3	6.3	3.3 3.4	3.4	3.5	7.0 7.0	7.0	10.2
				Middle	4.5	22.9 22.8	22.9	7.7 7.7	7.7	36.4 36.4	36.4	88.8 88.8	88.8	6.2 6.2	6.2		3.3 3.7	3.5		4.0 5.0	4.5	
				Bottom	8	22.7 22.8	22.8	7.7 7.9	7.8	36.3 36.3	36.3	87.6 87.5	87.6	6.2 6.2	6.2		3.6 3.4	3.5		19.0 19.0	19.0	
6-May-09	Sunny	Moderate	17:05	Surface	1	26.0 26.0	26.0	7.9 7.8	7.9	36.2 36.5	36.4	87.7 86.9	87.3	6.6 6.4	6.5	6.5	3.8 4.0	3.9	3.8	5.0 5.0	5.0	6.5
				Middle	4.5	26.0 26.0	26.0	8.2 8.0	8.1	36.7 36.4	36.6	86.1 86.2	86.2	6.4 6.4	6.4		4.1 3.8	4.0		8.0 8.0	8.0	
				Bottom	8	26.0 26.0	26.0	7.9 8.2	8.1	36.5 33.3	34.9	84.8 84.9	84.9	6.2 6.3	6.3		3.3 3.6	3.5		7.0 6.0	6.5	
8-May-09	Fine	Calm	17:02	Surface	1	23.3 23.5	23.4	7.7 7.7	7.7	36.7 36.6	36.7	94.2 94.3	94.3	6.5 6.5	6.5	6.6	4.1 4.6	4.4	4.3	12.0 12.0	12.0	11.3
				Middle	4.5	23.4 23.2	23.3	8.0 7.9	8.0	33.0 36.1	34.6	94.6 94.1	94.4	6.7 6.5	6.6		4.6 4.2	4.4		8.0 8.0	8.0	
				Bottom	8	23.1 23.1	23.1	7.9 8.1	8.0	33.3 35.6	34.5	93.5 93.5	93.5	6.6 6.5	6.6		4.0 3.9	4.0		21.0 21.0	21.0	
11-May-09	Sunny	Calm	08:25	Surface	1	25.3 25.5	25.4	7.7 7.8	7.8	33.5 34.4	34.0	92.4 92.0	92.2	6.7 6.7	6.7	6.7	3.6 3.6	3.6	3.4	9.0 9.0	9.0	10.7
				Middle	4.5	25.4 25.2	25.3	8.2 7.9	8.1	34.5 34.3	34.4	90.6 90.3	90.5	6.6 6.6	6.6		3.4 3.4	3.4		12.0 12.0	12.0	
				Bottom	8	25.1 25.1	25.1	8.0 8.3	8.2	35.0 33.6	34.3	89.4 89.3	89.4	6.5 6.6	6.6		3.4 3.2	3.3		11.0 11.0	11.0	
13-May-09	Sunny	Calm	08:47	Surface	1	24.5 24.4	24.5	7.7 7.7	7.7	33.3 34.3	33.8	97.2 99.3	98.3	6.7 6.8	6.8	6.7	2.0 2.0	2.0	2.3	9.0 9.0	9.0	8.3
				Middle	5	24.5 24.6	24.6	8.0 7.9	8.0	34.2 34.2	34.2	94.5 94.3	94.4	6.5 6.5	6.5		2.2 2.3	2.3		8.0 8.0	8.0	
				Bottom	9	24.5 24.5	24.5	8.1 8.1	8.1	34.3 34.3	34.3	93.9 93.5	93.7	6.5 6.5	6.5		2.4 2.5	2.5		8.0 8.0	8.0	
18-May-09	Sunny	Moderate	13:44	Surface	1	26.5 26.4	26.5	7.7 7.8	7.8	33.0 33.0	33.0	97.0 98.1	97.6	6.5 6.6	6.6	6.7	1.4 1.4	1.4	2.1	10.0 10.0	10.0	6.7
				Middle	4.5	25.1 25.1	25.1	8.1 7.9	8.0	33.7 33.7	33.7	98.7 97.0	97.9	6.7 6.6	6.7		1.9 2.1	2.0		4.0 4.0	4.0	
				Bottom	8	24.8 24.7	24.8	7.9 8.2	8.1	34.0 34.0	34.0	92.9 91.5	92.2	6.4 6.3	6.4		2.8 3.0	2.9		6.0 6.0	6.0	
20-May-09	Fine	Calm	15:28	Surface	1	28.8 28.8	28.8	7.8 7.8	7.8	36.3 36.3	36.3	96.9 96.9	96.9	6.5 6.5	6.5	6.6	6.5 6.5	6.5	6.8	6.0 6.0	6.0	6.5
				Middle	4.5	28.3 28.3	28.3	8.4 8.2	8.3	36.7 36.7	36.7	96.7 96.5	96.6	6.6 6.6	6.6		6.5 6.8	6.7		9.0 9.0	9.0	
				Bottom	8	28.2 28.2	28.2	8.0 8.2	8.1	37.3 37.3	37.3	95.8 95.5	95.7	6.5 6.5	6.5		7.2 7.2	7.2		4.0 5.0	4.5	
22-May-09	Cloudy	Calm	16:03	Surface	1	26.4 26.4	26.4	7.9 7.9	7.9	29.8 29.8	29.8	103.4 103.4	103.4	6.9 6.9	6.9	6.6	1.0 1.1	1.1	1.5	4.0 5.0	4.5	8.5
				Middle	4.5	26.0 26.0	26.0	8.0 7.8	7.9	30.5 30.4	30.5	93.2 92.3	92.8	6.2 6.1	6.2		1.8 1.7	1.8		14.0 14.0	14.0	
				Bottom	8	25.9 25.9	25.9	7.9 8.1	8.0	30.6 30.7	30.7	94.5 92.9	93.7	6.4 6.3	6.4		1.6 1.6	1.6		7.0 7.0	7.0	

## Water Quality Monitoring Results at I1 - Mid-Flood Tide

Date	Weather Condition	Sea Condition**	Sampling Time	Depth (m)		Water Temperature (°C)		pH		Salinity ppt		DO Saturation (%)		Dissolved Oxygen (mg/L)			Turbidity(NTU)			Suspended Solids (mg/L)		
						Value	Average	Value	Average	Value	Average	Value	Average	Value	Average	DA*	Value	Average	DA*	Value	Average	DA*
25-May-09	Rainy	Moderate	08:28	Surface	1	21.2 21.2	21.2	7.8 7.7	7.8	33.0 33.2	33.1	88.7 89.0	88.9	6.4 6.4	6.4	6.5	3.6 3.2	3.4	2.7	8.0 8.0	8.0	7.0
				Middle	4.5	21.2 21.2	21.2	7.9 7.7	7.8	34.3 35.2	34.8	89.2 89.0	89.1	6.4 6.5	6.5		2.4 2.5	2.5		5.0 5.0	5.0	
				Bottom	8	21.2 21.2	21.2	7.9 7.9	7.9	31.9 33.4	32.7	88.5 88.2	88.4	6.4 6.3	6.4		2.2 2.0	2.1		8.0 8.0	8.0	
27-May-09	Cloudy	Calm	08:27	Surface	1	24.4 24.4	24.4	7.8 7.7	7.8	35.0 34.6	34.8	91.7 91.2	91.5	6.6 6.6	6.6	6.5	3.0 3.1	3.1	3.4	10.0 9.0	9.5	6.2
				Middle	4.5	24.3 24.3	24.3	8.1 8.0	8.1	34.9 36.3	35.6	87.1 87.1	87.1	6.3 6.3	6.3		3.3 3.4	3.4		4.0 4.0	4.0	
				Bottom	8	24.2 24.2	24.2	7.9 8.0	8.0	35.4 35.4	35.4	86.7 86.6	86.7	6.3 6.3	6.3		3.7 3.9	3.8		5.0 5.0	5.0	
29-May-09	Cloudy	Moderate	09:49	Surface	1	22.7 22.9	22.8	7.6 7.7	7.7	37.0 36.8	36.9	100.1 101.3	100.7	7.3 7.4	7.4	7.2	3.4 3.6	3.5	3.7	6.0 6.0	6.0	8.3
				Middle	4.5	23.3 23.2	23.3	8.0 7.8	7.9	34.6 36.1	35.4	94.4 93.4	93.9	6.9 6.8	6.9		3.7 3.6	3.7		8.0 8.0	8.0	
				Bottom	8	23.2 23.2	23.2	7.9 8.2	8.1	34.7 35.8	35.3	89.2 89.0	89.1	6.5 6.4	6.5		3.9 4.0	4.0		11.0 11.0	11.0	

Remarks: \* DA: Depth-Averaged  
 \*\* Calm: Small or no wave; Moderate: Between calm and rough; Rough : White capped or rougher



### Water Quality Monitoring Results at I2 - Mid-Ebb Tide

Date	Weather Condition	Sea Condition**	Sampling Time	Depth (m)		Water Temperature (°C)		pH		Salinity ppt		DO Saturation (%)		Dissolved Oxygen (mg/L)			Turbidity (NTU)			Suspended Solids (mg/L)		
						Value	Average	Value	Average	Value	Average	Value	Average	Value	Average	DA*	Value	Average	DA*	Value	Average	DA*
1-May-09	Sunny	Moderate	16:58	Surface	1	22.9 22.9	22.9	7.6 7.6	7.6	35.6 36.3	36.0	94.7 92.2	93.5	7.3 7.2	7.3	7.1	3.8 3.2	3.5	3.4	12.0 13.0	12.5	10.7
				Middle	4.5	22.8 22.8	22.8	7.7 7.6	7.7	36.4 35.8	36.1	88.0 88.0	88.0	6.8 6.8	6.8		3.6 3.6	3.6		8.0 8.0	8.0	
				Bottom	8	22.8 22.8	22.8	7.8 7.8	7.8	36.0 34.9	35.5	85.6 85.5	85.6	6.7 6.7	6.7		3.2 3.0	3.1		12.0 11.0	11.5	
4-May-09	Sunny	Moderate	09:24	Surface	1	22.8 22.8	22.8	7.8 7.7	7.8	36.3 36.3	36.3	91.3 91.5	91.4	6.4 6.4	6.4	6.5	2.2 2.2	2.2	3.0	10.0 10.0	10.0	10.7
				Middle	4.5	22.6 22.6	22.6	7.9 7.7	7.8	36.5 35.8	36.2	92.5 92.8	92.7	6.5 6.6	6.6		3.7 3.2	3.5		17.0 17.0	17.0	
				Bottom	8	22.5 22.5	22.5	7.8 7.8	7.8	35.0 35.9	35.5	91.7 90.8	91.3	6.5 6.4	6.5		3.1 3.2	3.2		5.0 5.0	5.0	
6-May-09	Sunny	Moderate	10:40	Surface	1	25.9 26.0	26.0	8.0 7.9	8.0	33.3 33.5	33.4	86.1 85.9	86.0	6.4 6.4	6.4	6.4	3.2 3.2	3.2	3.3	14.0 14.0	14.0	13.2
				Middle	4.5	25.9 25.8	25.9	8.0 7.9	8.0	36.9 37.0	37.0	85.4 85.6	85.5	6.3 6.4	6.4		3.5 3.2	3.4		9.0 10.0	9.5	
				Bottom	8	25.8 25.8	25.8	8.0 7.9	8.0	37.0 37.1	37.1	84.7 85.2	85.0	6.2 6.3	6.3		3.2 3.4	3.3		16.0 16.0	16.0	
8-May-09	Sunny	Calm	11:48	Surface	1	23.4 23.3	23.4	7.8 7.9	7.9	33.3 36.1	34.7	91.4 91.4	91.4	6.5 6.4	6.5	6.5	4.5 4.2	4.4	4.4	16.0 15.0	15.5	13.5
				Middle	4.5	23.3 23.3	23.3	7.9 7.9	7.9	36.7 35.1	35.9	91.4 91.7	91.6	6.4 6.5	6.5		4.6 4.4	4.5		12.0 12.0	12.0	
				Bottom	8	23.2 23.2	23.2	8.0 7.9	8.0	36.1 35.7	35.9	89.4 89.2	89.3	6.2 6.2	6.2		4.3 4.1	4.2		13.0 13.0	13.0	
11-May-09	Sunny	Calm	14:10	Surface	1	25.4 25.3	25.4	8.0 8.0	8.0	33.7 34.4	34.1	93.6 92.4	93.0	6.6 6.6	6.6	6.6	3.3 3.3	3.3	3.5	8.0 9.0	8.5	8.2
				Middle	4.5	25.3 25.3	25.3	8.2 8.0	8.1	34.6 34.3	34.5	89.7 89.8	89.8	6.5 6.5	6.5		3.8 3.7	3.8		8.0 8.0	8.0	
				Bottom	8	25.2 25.2	25.2	8.2 8.0	8.1	34.9 34.7	34.8	89.7 89.9	89.8	6.5 6.5	6.5		3.3 3.4	3.4		8.0 8.0	8.0	
13-May-09	Sunny	Calm	13:55	Surface	1	24.4 24.4	24.4	7.7 7.9	7.8	32.8 32.7	32.8	99.3 97.6	98.5	7.3 7.2	7.3	6.9	1.7 1.9	1.8	2.1	9.0 9.0	9.0	10.0
				Middle	4.5	24.5 24.5	24.5	7.7 7.9	7.8	33.0 33.0	33.0	94.4 93.8	94.1	6.4 6.4	6.4		2.2 2.1	2.2		12.0 11.0	11.5	
				Bottom	8	24.4 24.4	24.4	7.9 8.0	8.0	33.3 33.4	33.4	90.4 90.2	90.3	6.5 6.5	6.5		2.4 2.4	2.4		9.0 10.0	9.5	
15-May-09	Sunny	Calm	16:15	Surface	1	27.5 27.5	27.5	7.9 7.8	7.9	36.7 36.7	36.7	91.3 92.0	91.7	6.8 6.8	6.8	6.8	2.3 2.5	2.4	2.4	6.0 6.0	6.0	6.2
				Middle	4.5	27.5 27.4	27.5	8.0 7.8	7.9	36.7 36.7	36.7	91.1 91.1	91.1	6.8 6.8	6.8		2.5 2.5	2.5		6.0 6.0	6.0	
				Bottom	8	27.3 27.3	27.3	8.0 7.9	8.0	36.7 36.7	36.7	90.6 90.6	90.6	6.7 6.7	6.7		2.3 2.4	2.4		7.0 6.0	6.5	
18-May-09	Sunny	Moderate	08:28	Surface	1	25.8 25.9	25.9	7.8 7.8	7.8	33.2 33.1	33.2	98.9 102.1	100.5	6.7 6.9	6.8	6.7	1.4 1.3	1.4	1.5	8.0 9.0	8.5	9.8
				Middle	4.5	25.1 25.1	25.1	7.8 7.8	7.8	33.6 33.7	33.7	97.5 99.4	98.5	6.5 6.7	6.6		1.4 1.6	1.5		13.0 13.0	13.0	
				Bottom	8	24.6 24.6	24.6	8.1 7.9	8.0	34.0 34.0	34.0	95.1 92.9	94.0	6.5 6.4	6.5		1.7 1.7	1.7		8.0 8.0	8.0	
20-May-09	Fine	Calm	10:23	Surface	1	29.2 29.2	29.2	7.8 7.7	7.8	35.7 36.1	35.9	95.8 96.0	95.9	6.4 6.4	6.4	6.4	6.8 6.7	6.8	6.9	4.0 4.0	4.0	6.3
				Middle	4.5	29.0 29.0	29.0	7.7 8.3	8.0	36.2 36.6	36.4	96.0 96.0	96.0	6.4 6.4	6.4		6.8 6.9	6.9		8.0 8.0	8.0	
				Bottom	8	28.5 28.5	28.5	8.4 8.5	8.5	37.0 37.0	37.0	92.3 92.1	92.2	6.2 6.2	6.2		7.0 7.0	7.0		7.0 7.0	7.0	

### Water Quality Monitoring Results at I2 - Mid-Ebb Tide

Date	Weather Condition	Sea Condition**	Sampling Time	Depth (m)		Water Temperature (°C)		pH		Salinity ppt		DO Saturation (%)		Dissolved Oxygen (mg/L)			Turbidity (NTU)			Suspended Solids (mg/L)		
						Value	Average	Value	Average	Value	Average	Value	Average	Value	Average	DA*	Value	Average	DA*	Value	Average	DA*
22-May-09	Cloudy	Calm	10:32	Surface	1	26.5 26.5	26.5	7.7 7.7	7.7	29.9 29.9	29.9	106.4 106.2	106.3	7.1 7.1	7.1	6.7	0.8 0.9	0.9	1.6	7.0 7.0	7.0	10.0
				Middle	4.5	25.6 25.6	25.6	7.8 7.6	7.7	32.1 32.1	32.1	96.9 93.6	95.3	6.4 6.2	6.3		1.6 1.8	1.7		12.0 12.0	12.0	
				Bottom	8	25.5 25.5	25.5	7.9 7.8	7.9	32.3 32.3	32.3	91.4 90.7	91.1	6.2 6.2	6.2		2.3 2.2	2.3		2.3 2.2	2.3	
25-May-09	Rainy	Moderate	13:39	Surface	1	21.2 21.2	21.2	8.0 7.9	8.0	33.7 32.8	33.3	92.8 93.0	92.9	6.6 6.7	6.7	6.7	3.3 3.2	3.3	2.6	10.0 10.0	10.0	9.3
				Middle	4.5	21.2 21.2	21.2	8.1 8.0	8.1	35.3 31.7	33.5	93.1 93.0	93.1	6.7 6.7	6.7		2.6 2.2	2.4		10.0 9.0	9.5	
				Bottom	8	21.2 21.2	21.2	8.0 7.8	7.9	33.7 34.9	34.3	92.2 91.8	92.0	6.6 6.6	6.6		2.1 2.0	2.1		2.1 2.0	2.1	
27-May-09	Cloudy	Calm	14:05	Surface	1	24.4 24.4	24.4	8.0 7.8	7.9	36.2 36.2	36.2	88.3 87.3	87.8	6.5 6.4	6.5	6.5	3.1 3.1	3.1	3.1	6.0 6.0	6.0	6.2
				Middle	4.5	24.2 24.1	24.2	7.9 8.0	8.0	35.0 36.3	35.7	87.7 87.2	87.5	6.5 6.4	6.5		2.8 2.6	2.7		5.0 6.0	5.5	
				Bottom	8	24.1 24.1	24.1	8.0 7.8	7.9	35.9 36.0	36.0	85.2 83.9	84.6	6.2 6.1	6.2		3.3 3.5	3.4		3.3 3.5	3.4	
29-May-09	Cloudy	Moderate	16:20	Surface	1	23.3 23.3	23.3	8.1 7.9	8.0	36.2 36.3	36.3	95.3 95.3	95.3	6.9 6.9	6.9	6.7	3.7 3.8	3.8	3.7	7.0 7.0	7.0	8.7
				Middle	4.5	23.3 23.3	23.3	8.1 7.8	8.0	36.3 36.1	36.2	89.4 89.3	89.4	6.5 6.5	6.5		3.7 3.8	3.8		10.0 10.0	10.0	
				Bottom	8	23.3 23.3	23.3	8.2 7.9	8.1	36.1 36.1	36.1	86.7 86.5	86.6	6.3 6.2	6.3		3.6 3.6	3.6		3.6 3.6	3.6	

Remarks: \* DA: Depth-Averaged  
 \*\* Calm: Small or no wave; Moderate: Between calm and rough; Rough : White capped or rougher

### Water Quality Monitoring Results at I2 - Mid-Flood Tide

Date	Weather Condition	Sea Condition**	Sampling Time	Depth (m)		Water Temperature (°C)		pH		Salinity ppt		DO Saturation (%)		Dissolved Oxygen (mg/L)			Turbidity(NTU)			Suspended Solids (mg/L)		
						Value	Average	Value	Average	Value	Average	Value	Average	Value	Average	DA*	Value	Average	DA*	Value	Average	DA*
1-May-09	Sunny	Moderate	10:15	Surface	1	23.1 23.1	23.1	7.8 7.6	7.7	34.3 36.0	35.2	86.4 86.1	86.3	6.8 6.7	6.8	6.7	4.1 4.2	4.2	4.2	9.0 9.0	9.0	9.2
				Middle	4.5	22.9 22.9	22.9	7.7 7.6	7.7	36.2 36.8	36.5	85.4 85.4	85.4	6.6 6.6	6.6		4.0 4.2	4.1		9.0 9.0	9.0	
				Bottom	8	22.9 22.9	22.9	7.7 7.6	7.7	37.5 35.0	36.3	86.2 86.5	86.4	6.7 6.8	6.8		4.3 4.1	4.2		9.0 10.0	9.5	
4-May-09	Sunny	Moderate	14:21	Surface	1	23.0 23.0	23.0	7.5 7.5	7.5	36.2 36.2	36.2	90.9 90.9	90.9	6.5 6.5	6.5	6.5	3.4 3.3	3.4	3.6	5.0 6.0	5.5	8.5
				Middle	4.5	22.8 22.8	22.8	7.4 7.5	7.5	35.0 36.1	35.6	90.5 90.5	90.5	6.4 6.4	6.4		3.8 3.6	3.7		11.0 11.0	11.0	
				Bottom	8	22.7 22.7	22.7	7.5 7.5	7.5	36.0 35.7	35.9	88.5 88.8	88.7	6.2 6.2	6.2		3.5 3.8	3.7		9.0 9.0	9.0	
6-May-09	Sunny	Moderate	17:03	Surface	1	26.0 26.0	26.0	7.7 7.8	7.8	35.8 35.0	35.4	91.0 90.8	90.9	6.8 6.7	6.8	6.6	4.4 4.1	4.3	3.4	7.0 7.0	7.0	8.5
				Middle	4.5	26.0 26.0	26.0	7.9 7.8	7.9	36.8 36.5	36.7	85.8 84.5	85.2	6.3 6.2	6.3		3.1 3.5	3.3		13.0 12.0	12.5	
				Bottom	8	26.1 26.1	26.1	7.8 7.9	7.9	34.5 33.7	34.1	83.9 84.1	84.0	6.1 6.1	6.1		2.5 2.5	2.5		6.0 6.0	6.0	
8-May-09	Fine	Calm	17:01	Surface	1	23.5 23.5	23.5	7.7 7.7	7.7	36.5 36.5	36.5	97.6 96.8	97.2	6.7 6.7	6.7	6.8	3.7 3.6	3.7	4.1	14.0 14.0	14.0	13.5
				Middle	4.5	23.2 23.1	23.2	7.7 7.7	7.7	33.8 34.7	34.3	96.3 96.1	96.2	6.8 6.7	6.8		5.1 4.3	4.7		10.0 10.0	10.0	
				Bottom	8	23.1 23.1	23.1	7.8 7.8	7.8	34.7 34.6	34.7	95.1 95.1	95.1	6.7 6.7	6.7		3.9 3.9	3.9		10.0 9.0	9.5	
11-May-09	Sunny	Calm	08:21	Surface	1	25.5 25.5	25.5	7.9 7.8	7.9	33.5 32.7	33.1	91.9 91.0	91.5	6.7 6.7	6.7	6.7	3.4 3.6	3.5	3.5	12.0 12.0	12.0	10.0
				Middle	4.5	25.2 25.1	25.2	7.9 7.8	7.9	34.8 34.7	34.8	90.0 89.8	89.9	6.6 6.5	6.6		3.5 3.6	3.6		10.0 10.0	10.0	
				Bottom	8	25.1 25.1	25.1	7.9 7.9	7.9	33.7 34.7	34.2	89.7 89.4	89.6	6.6 6.6	6.6		3.3 3.3	3.3		8.0 8.0	8.0	
13-May-09	Sunny	Calm	08:39	Surface	1	24.5 24.5	24.5	7.7 7.7	7.7	34.0 34.0	34.0	100.1 98.4	99.3	7.0 6.9	7.0	6.8	2.3 2.2	2.3	2.2	6.0 7.0	6.5	4.7
				Middle	4.5	24.4 24.4	24.4	7.8 7.7	7.8	34.0 34.1	34.1	95.0 94.2	94.6	6.6 6.5	6.6		2.0 1.9	2.0		3.0 4.0	3.5	
				Bottom	8	24.4 24.4	24.4	7.7 7.8	7.8	34.1 34.2	34.2	94.1 93.6	93.9	6.5 6.5	6.5		2.3 2.3	2.3		4.0 4.0	4.0	
18-May-09	Sunny	Moderate	13:53	Surface	1	26.3 26.3	26.3	8.0 7.8	7.9	33.1 33.1	33.1	99.9 100.2	100.1	6.7 6.7	6.7	6.7	2.4 2.2	2.3	2.2	8.0 8.0	8.0	7.3
				Middle	5	25.2 25.2	25.2	7.7 7.9	7.8	33.7 33.7	33.7	97.9 96.7	97.3	6.7 6.6	6.7		1.8 1.9	1.9		10.0 10.0	10.0	
				Bottom	9	24.8 24.8	24.8	7.7 7.6	7.7	33.9 34.0	34.0	94.3 92.4	93.4	6.5 6.3	6.4		2.2 2.4	2.3		4.0 4.0	4.0	
20-May-09	Fine	Calm	15:32	Surface	1	28.7 28.7	28.7	8.6 8.1	8.4	36.9 36.9	36.9	98.7 98.8	98.8	6.6 6.7	6.7	6.7	6.7 6.8	6.8	7.0	6.0 6.0	6.0	6.7
				Middle	4.5	28.5 28.5	28.5	8.1 8.4	8.3	37.1 37.1	37.1	98.6 98.3	98.5	6.7 6.6	6.7		6.6 6.5	6.6		7.0 7.0	7.0	
				Bottom	8	28.2 28.1	28.2	7.9 7.7	7.8	37.4 37.5	37.5	96.8 96.1	96.5	6.6 6.5	6.6		7.3 7.7	7.5		7.0 7.0	7.0	
22-May-09	Cloudy	Calm	15:55	Surface	1	26.4 26.4	26.4	7.8 7.8	7.8	29.8 29.8	29.8	99.9 104.5	102.2	6.6 6.9	6.8	6.7	1.2 1.1	1.2	1.5	12.0 12.0	12.0	9.2
				Middle	4.5	25.9 25.9	25.9	7.8 7.6	7.7	30.7 30.7	30.7	98.1 95.7	96.9	6.5 6.4	6.5		1.4 1.4	1.4		9.0 10.0	9.5	
				Bottom	8	25.5 25.4	25.5	7.8 7.7	7.8	32.1 32.1	32.1	93.0 91.2	92.1	6.2 6.1	6.2		1.9 2.0	2.0		6.0 6.0	6.0	

## Water Quality Monitoring Results at I2 - Mid-Flood Tide

Date	Weather Condition	Sea Condition**	Sampling Time	Depth (m)		Water Temperature (°C)		pH		Salinity ppt		DO Saturation (%)		Dissolved Oxygen (mg/L)			Turbidity(NTU)			Suspended Solids (mg/L)		
						Value	Average	Value	Average	Value	Average	Value	Average	Value	Average	DA*	Value	Average	DA*	Value	Average	DA*
25-May-09	Rainy	Moderate	08:27	Surface	1	21.2 21.2	21.2	7.6 7.7	7.7	33.2 34.1	33.7	89.6 89.7	89.7	6.4 6.4	6.4	6.4	2.1 2.6	2.4	2.5	10.0 10.0	10.0	8.0
				Middle	4.5	21.2 21.2	21.2	7.7 7.7	7.7	33.9 34.3	34.1	89.6 89.4	89.5	6.4 6.4	6.4		2.3 2.3	2.3		8.0 8.0	8.0	
				Bottom	8	21.2 21.2	21.2	7.7 7.7	7.7	34.2 33.3	33.8	88.1 87.9	88.0	6.3 6.3	6.3		2.6 2.7	2.7		6.0 6.0	6.0	
27-May-09	Cloudy	Calm	08:21	Surface	1	24.5 24.4	24.5	7.8 7.8	7.8	36.1 36.4	36.3	89.1 88.7	88.9	6.4 6.4	6.4	6.4	2.6 2.6	2.6	2.8	10.0 10.0	10.0	6.8
				Middle	4.5	24.3 24.3	24.3	8.0 7.8	7.9	36.3 36.3	36.3	87.3 87.4	87.4	6.3 6.3	6.3		2.8 2.7	2.8		7.0 7.0	7.0	
				Bottom	8	24.2 24.2	24.2	8.1 8.0	8.1	36.3 36.3	36.3	86.7 86.7	86.7	6.3 6.3	6.3		3.0 3.2	3.1		3.0 4.0	3.5	
29-May-09	Cloudy	Moderate	09:42	Surface	1	23.4 23.4	23.4	7.6 7.6	7.6	36.2 36.2	36.2	97.2 96.7	97.0	7.0 7.0	7.0	6.8	3.1 3.0	3.1	3.4	8.0 8.0	8.0	8.3
				Middle	4.5	23.2 23.2	23.2	7.5 7.7	7.6	34.8 35.3	35.1	91.3 91.2	91.3	6.6 6.6	6.6		3.8 3.4	3.6		7.0 7.0	7.0	
				Bottom	8	23.2 23.2	23.2	7.5 7.6	7.6	35.3 35.3	35.3	88.6 88.5	88.6	6.4 6.4	6.4		3.5 3.6	3.6		10.0 10.0	10.0	

Remarks: \* DA: Depth-Averaged  
 \*\* Calm: Small or no wave; Moderate: Between calm and rough; Rough : White capped or rougher

### Water Quality Monitoring Results at Intake A - Mid-Ebb Tide

Date	Weather Condition	Sea Condition**	Sampling Time	Depth (m)		Water Temperature (°C)		pH		Salinity ppt		DO Saturation (%)		Dissolved Oxygen (mg/L)			Turbidity (NTU)			Suspended Solids (mg/L)		
						Value	Average	Value	Average	Value	Average	Value	Average	Value	Average	DA*	Value	Average	DA*	Value	Average	DA*
1-May-09	Sunny	Moderate	17:03	Surface	1	22.9 22.8	22.9	7.8 7.6	7.7	36.9 37.0	37.0	93.7 91.6	92.7	7.2 7.1	7.2	7.0	3.2 3.2	3.2	2.9	13.0 13.0	13.0	10.7
				Middle	4.5	22.8 22.8	22.8	7.9 7.8	7.9	33.4 33.6	33.5	85.1 85.5	85.3	6.7 6.7	6.7		2.7 2.8	2.8		9.0 9.0	9.0	
				Bottom	8	22.8 22.7	22.8	7.5 7.7	7.6	36.7 37.7	37.2	88.2 88.2	88.2	6.8 6.8	6.8		2.6 3.0	2.8		10.0 10.0	10.0	
4-May-09	Sunny	Moderate	09:30	Surface	1	22.7 22.7	22.7	7.6 7.6	7.6	35.6 35.4	35.5	91.0 91.0	91.0	6.4 6.4	6.4	6.5	2.7 2.8	2.8	2.7	11.0 10.0	10.5	8.5
				Middle	5	22.6 22.6	22.6	7.9 7.7	7.8	35.7 34.9	35.3	90.9 90.9	90.9	6.4 6.5	6.5		2.8 2.9	2.9		8.0 8.0	8.0	
				Bottom	9	22.6 22.6	22.6	7.7 7.9	7.8	33.0 35.9	34.5	90.3 89.6	90.0	6.5 6.3	6.4		2.4 2.5	2.5		7.0 7.0	7.0	
6-May-09	Sunny	Moderate	10:48	Surface	1	25.8 25.8	25.8	8.0 7.8	7.9	36.7 36.8	36.8	94.9 94.1	94.5	6.9 6.8	6.9	6.8	2.4 2.4	2.4	2.4	15.0 14.0	14.5	13.2
				Middle	5	26.0 25.9	26.0	8.1 8.1	8.1	33.2 33.3	33.3	91.7 91.4	91.6	6.7 6.7	6.7		2.6 2.6	2.6		13.0 13.0	13.0	
				Bottom	9	25.9 25.9	25.9	7.9 8.0	8.0	33.6 36.5	35.1	91.0 90.9	91.0	6.6 6.6	6.6		2.1 2.1	2.1		12.0 12.0	12.0	
8-May-09	Sunny	Calm	11:54	Surface	1	23.3 23.3	23.3	7.9 7.8	7.9	36.5 33.8	35.2	91.0 90.9	91.0	6.4 6.5	6.5	6.5	4.4 4.2	4.3	4.0	15.0 15.0	15.0	15.3
				Middle	5	23.3 23.2	23.3	8.0 8.1	8.1	36.0 36.0	36.0	91.0 91.3	91.2	6.4 6.4	6.4		3.7 3.8	3.8		21.0 21.0	21.0	
				Bottom	9	23.2 23.2	23.2	7.8 8.0	7.9	36.7 36.7	36.7	89.5 89.5	89.5	6.2 6.2	6.2		4.1 3.9	4.0		10.0 10.0	10.0	
11-May-09	Sunny	Calm	14:02	Surface	1	25.3 25.3	25.3	8.2 7.9	8.1	33.7 34.2	34.0	99.9 98.0	99.0	7.0 6.8	6.9	6.8	3.1 2.9	3.0	2.9	13.0 12.0	12.5	9.8
				Middle	5	25.3 25.2	25.3	8.2 8.4	8.3	34.0 34.6	34.3	95.2 94.9	95.1	6.7 6.7	6.7		2.8 2.7	2.8		8.0 8.0	8.0	
				Bottom	9	25.2 25.2	25.2	7.9 8.0	8.0	34.7 33.0	33.9	94.4 94.2	94.3	6.7 6.7	6.7		2.8 2.8	2.8		9.0 9.0	9.0	
13-May-09	Sunny	Calm	13:45	Surface	1	24.2 24.4	24.3	8.0 7.9	8.0	32.8 32.6	32.7	100.5 98.3	99.4	7.2 7.0	7.1	6.8	2.1 2.1	2.1	2.3	8.0 8.0	8.0	10.2
				Middle	5.5	24.4 24.4	24.4	8.2 8.2	8.2	32.9 32.9	32.9	95.1 93.4	94.3	6.5 6.4	6.5		2.4 2.4	2.4		9.0 10.0	9.5	
				Bottom	10	24.4 24.4	24.4	7.6 8.0	7.8	33.3 33.3	33.3	89.9 89.6	89.8	6.4 6.4	6.4		2.5 2.4	2.5		13.0 13.0	13.0	
15-May-09	Sunny	Calm	15:51	Surface	1	27.4 27.4	27.4	8.1 7.8	8.0	36.3 36.3	36.3	96.4 96.4	96.4	7.2 7.2	7.2	7.2	3.6 3.6	3.6	3.3	6.0 6.0	6.0	6.3
				Middle	5.5	27.4 27.4	27.4	8.0 8.1	8.1	36.4 36.4	36.4	95.8 95.6	95.7	7.1 7.1	7.1		3.5 3.4	3.5		8.0 8.0	8.0	
				Bottom	10	27.3 27.3	27.3	7.8 7.9	7.9	36.4 36.5	36.5	95.5 95.1	95.3	7.1 7.1	7.1		2.8 2.7	2.8		5.0 5.0	5.0	
18-May-09	Sunny	Moderate	08:18	Surface	1	26.3 26.3	26.3	7.8 7.8	7.8	32.7 32.7	32.7	100.7 102.7	101.7	6.4 6.5	6.5	6.7	2.2 1.8	2.0	2.1	5.0 5.0	5.0	6.8
				Middle	6	25.0 24.9	25.0	7.8 7.9	7.9	33.9 33.8	33.9	107.3 99.5	103.4	7.0 6.5	6.8		1.8 2.1	2.0		9.0 9.0	9.0	
				Bottom	11	24.3 24.4	24.4	7.9 8.0	8.0	34.2 34.2	34.2	92.2 89.2	90.7	6.3 6.1	6.2		2.2 2.2	2.2		6.0 7.0	6.5	
20-May-09	Fine	Calm	10:12	Surface	1	28.6 28.8	28.7	7.9 7.8	7.9	36.0 35.8	35.9	97.1 97.0	97.1	6.6 6.6	6.6	6.6	6.4 6.6	6.5	7.5	3.0 4.0	3.5	8.2
				Middle	5	28.3 28.2	28.3	7.7 7.7	7.7	36.7 36.7	36.7	97.6 97.6	97.6	6.6 6.6	6.6		7.2 7.5	7.4		12.0 12.0	12.0	
				Bottom	9	28.1 28.1	28.1	8.2 8.2	8.2	36.8 36.9	36.9	96.4 96.0	96.2	6.6 6.5	6.6		8.6 8.7	8.7		9.0 9.0	9.0	

### Water Quality Monitoring Results at Intake A - Mid-Ebb Tide

Date	Weather Condition	Sea Condition**	Sampling Time	Depth (m)		Water Temperature (°C)		pH		Salinity ppt		DO Saturation (%)		Dissolved Oxygen (mg/L)			Turbidity (NTU)			Suspended Solids (mg/L)		
						Value	Average	Value	Average	Value	Average	Value	Average	Value	Average	DA*	Value	Average	DA*	Value	Average	DA*
22-May-09	Cloudy	Calm	10:25	Surface	1	26.4 26.4	26.4	8.0 7.6	7.8	30.0 30.0	30.0	100.5 100.5	100.5	6.7 6.7	6.7	6.5	1.5 1.4	1.5	1.6	9.0 8.0	8.5	9.2
				Middle	5	26.1 26.1	26.1	7.9 8.0	8.0	30.5 30.5	30.5	94.1 92.8	93.5	6.3 6.2	6.3		1.3 1.3	1.3		13.0 13.0		
				Bottom	9	25.6 25.6	25.6	7.7 7.7	7.7	31.8 31.8	31.8	91.3 90.3	90.8	6.2 6.1	6.2		1.8 1.9	1.9		6.0 6.0		
25-May-09	Rainy	Moderate	13:46	Surface	1	21.2 21.2	21.2	8.0 7.9	8.0	33.5 35.1	34.3	90.2 90.2	90.2	6.5 6.4	6.5	6.5	2.3 2.3	2.3	2.4	8.0 8.0	8.0	8.8
				Middle	5	21.2 21.2	21.2	8.2 8.1	8.2	33.2 33.3	33.3	90.1 89.6	89.9	6.4 6.4	6.4		2.6 2.1	2.4		10.0 9.0		
				Bottom	9	21.2 21.2	21.2	8.0 8.0	8.0	34.9 34.7	34.8	88.9 88.7	88.8	6.4 6.3	6.4		2.3 2.5	2.4		9.0 9.0		
27-May-09	Cloudy	Calm	13:55	Surface	1	24.4 24.4	24.4	7.8 7.7	7.8	36.0 35.9	36.0	89.5 89.5	89.5	6.6 6.6	6.6	6.6	3.0 3.1	3.1	3.2	5.0 5.0	5.0	7.2
				Middle	5	24.2 24.2	24.2	7.8 7.9	7.9	36.0 36.2	36.1	90.0 88.4	89.2	6.6 6.5	6.6		2.9 2.9	2.9		8.0 7.0		
				Bottom	9	24.2 24.3	24.3	7.9 7.9	7.9	36.4 36.4	36.4	86.3 86.3	86.3	6.3 6.3	6.3		3.5 3.5	3.5		9.0 9.0		
29-May-09	Cloudy	Moderate	16:11	Surface	1	23.0 23.2	23.1	8.0 7.8	7.9	36.4 36.3	36.4	93.2 93.6	93.4	6.8 6.8	6.8	6.6	3.4 3.6	3.5	3.4	7.0 8.0	7.5	7.8
				Middle	5	23.3 23.3	23.3	8.1 8.3	8.2	36.0 36.0	36.0	88.2 88.2	88.2	6.4 6.4	6.4		3.3 3.1	3.2		7.0 7.0		
				Bottom	9	23.3 23.3	23.3	7.6 7.9	7.8	35.5 36.0	35.8	86.3 86.4	86.4	6.3 6.2	6.3		3.3 3.5	3.4		9.0 9.0		

Remarks: \* DA: Depth-Averaged  
 \*\* Calm: Small or no wave; Moderate: Between calm and rough; Rough : White capped or rougher

### Water Quality Monitoring Results at Intake A - Mid-Flood Tide

Date	Weather Condition	Sea Condition**	Sampling Time	Depth (m)		Water Temperature (°C)		pH		Salinity ppt		DO Saturation (%)		Dissolved Oxygen (mg/L)			Turbidity(NTU)			Suspended Solids (mg/L)		
						Value	Average	Value	Average	Value	Average	Value	Average	Value	Average	DA*	Value	Average	DA*	Value	Average	DA*
1-May-09	Sunny	Moderate	10:09	Surface	1	23.1 23.1	23.1	7.8 7.7	7.8	37.5 37.1	37.3	91.1 89.7	90.4	7.0 6.9	7.0	6.9	3.6 3.5	3.6	3.2	7.0 7.0	7.0	8.8
				Middle	5	22.8 22.9	22.9	7.8 7.8	7.8	36.5 36.3	36.4	86.0 86.0	86.0	6.7 6.7	6.7		3.1 3.0	3.1		12.0 12.0	12.0	
				Bottom	9	22.8 22.9	22.9	7.7 7.9	7.8	34.2 37.5	35.9	86.7 87.6	87.2	6.8 6.8	6.8		2.9 3.0	3.0		7.0 8.0	7.5	
4-May-09	Sunny	Moderate	14:13	Surface	1	22.9 22.9	22.9	7.5 7.6	7.6	33.0 36.4	34.7	98.6 98.6	98.6	6.9 6.9	6.9	6.7	2.8 2.3	2.6	2.5	9.0 9.0	9.0	8.5
				Middle	5	22.7 22.6	22.7	7.7 7.7	7.7	35.9 35.0	35.5	91.1 90.4	90.8	6.4 6.4	6.4		2.7 2.6	2.7		6.0 7.0	6.5	
				Bottom	9	22.6 22.6	22.6	7.7 7.9	7.8	36.7 36.3	36.5	93.5 93.4	93.5	6.7 6.6	6.7		2.2 2.2	2.2		10.0 10.0	10.0	
6-May-09	Sunny	Moderate	16:55	Surface	1	26.1 26.1	26.1	7.9 7.8	7.9	36.3 35.8	36.1	86.5 86.2	86.4	6.5 6.5	6.5	6.4	3.3 3.4	3.4	2.9	7.0 7.0	7.0	8.2
				Middle	5	26.0 26.0	26.0	8.0 8.0	8.0	35.6 33.4	34.5	85.5 85.5	85.5	6.3 6.3	6.3		2.7 2.6	2.7		8.0 9.0	8.5	
				Bottom	9	26.1 26.1	26.1	8.0 8.1	8.1	36.7 33.6	35.2	84.8 85.1	85.0	6.3 6.3	6.3		2.6 2.8	2.7		9.0 9.0	9.0	
8-May-09	Fine	Calm	16:53	Surface	1	23.6 23.6	23.6	7.8 7.7	7.8	34.4 35.8	35.1	93.9 93.8	93.9	6.5 6.5	6.5	6.5	3.9 3.4	3.7	3.7	10.0 10.0	10.0	15.3
				Middle	5	23.5 23.5	23.5	8.0 7.8	7.9	35.9 35.9	35.9	93.0 93.0	93.0	6.4 6.4	6.4		3.6 3.5	3.6		19.0 19.0	19.0	
				Bottom	9	23.4 23.4	23.4	7.9 8.1	8.0	36.3 33.1	34.7	93.4 93.5	93.5	6.5 6.6	6.6		3.7 3.6	3.7		15.0 15.0	15.0	
11-May-09	Sunny	Calm	08:13	Surface	1	25.6 25.6	25.6	8.0 8.0	8.0	34.6 34.7	34.7	95.4 95.3	95.4	7.0 7.0	7.0	6.9	2.8 2.8	2.8	2.9	8.0 8.0	8.0	11.3
				Middle	5	25.5 25.5	25.5	8.2 7.9	8.1	34.4 34.5	34.5	93.1 92.6	92.9	6.8 6.7	6.8		3.1 3.0	3.1		16.0 16.0	16.0	
				Bottom	9	25.4 25.4	25.4	8.2 8.3	8.3	33.7 34.5	34.1	91.8 91.3	91.6	6.7 6.7	6.7		2.9 2.7	2.8		10.0 10.0	10.0	
13-May-09	Sunny	Calm	08:24	Surface	1	24.4 24.4	24.4	7.8 7.8	7.8	33.6 34.1	33.9	94.7 96.1	95.4	6.7 6.7	6.7	6.7	2.3 2.2	2.3	2.4	7.0 7.0	7.0	5.5
				Middle	5	24.5 24.5	24.5	8.1 7.7	7.9	34.1 34.1	34.1	93.2 93.1	93.2	6.6 6.5	6.6		2.3 2.4	2.4		6.0 6.0	6.0	
				Bottom	9	24.4 24.4	24.4	7.9 8.2	8.1	34.3 34.3	34.3	92.2 91.4	91.8	6.4 6.4	6.4		2.5 2.6	2.6		3.0 4.0	3.5	
18-May-09	Sunny	Moderate	14:06	Surface	1	26.7 26.7	26.7	7.6 7.6	7.6	32.7 32.7	32.7	99.0 102.3	100.7	6.4 6.7	6.6	6.8	1.2 1.2	1.2	1.6	6.0 6.0	6.0	4.9
				Middle	6	25.6 25.4	25.5	8.1 7.9	8.0	33.6 33.6	33.6	107.8 103.6	105.7	7.1 6.9	7.0		1.3 1.5	1.4		<2.5 3.0	2.8	
				Bottom	11	24.8 24.7	24.8	7.9 8.1	8.0	34.0 34.1	34.1	96.2 93.5	94.9	6.6 6.4	6.5		2.1 2.3	2.2		6.0 6.0	6.0	
20-May-09	Fine	Calm	15:42	Surface	1	28.7 28.7	28.7	7.7 7.8	7.8	36.0 36.2	36.1	99.6 99.2	99.4	6.7 6.7	6.7	6.7	6.7 6.7	6.7	7.3	7.0 8.0	7.5	9.5
				Middle	5	28.4 28.4	28.4	8.4 8.1	8.3	36.6 36.5	36.6	98.6 98.2	98.4	6.7 6.7	6.7		7.3 7.2	7.3		8.0 8.0	8.0	
				Bottom	9	28.2 28.2	28.2	8.1 8.0	8.1	36.8 36.8	36.8	95.9 95.8	95.9	6.5 6.5	6.5		7.8 7.8	7.8		13.0 13.0	13.0	
22-May-09	Cloudy	Calm	16:11	Surface	1	26.3 26.3	26.3	8.0 7.8	7.9	29.9 29.9	29.9	99.9 101.9	100.9	6.6 6.8	6.7	6.6	1.1 1.1	1.1	1.5	6.0 6.0	6.0	9.0
				Middle	5	26.0 26.0	26.0	8.0 8.0	8.0	30.5 30.5	30.5	96.1 95.3	95.7	6.4 6.3	6.4		1.4 1.4	1.4		11.0 11.0	11.0	
				Bottom	9	25.5 25.5	25.5	8.1 8.1	8.1	31.8 31.8	31.8	93.3 92.6	93.0	6.3 6.3	6.3		1.8 1.9	1.9		10.0 10.0	10.0	

## Water Quality Monitoring Results at Intake A - Mid-Flood Tide

Date	Weather Condition	Sea Condition**	Sampling Time	Depth (m)		Water Temperature (°C)		pH		Salinity ppt		DO Saturation (%)		Dissolved Oxygen (mg/L)			Turbidity(NTU)			Suspended Solids (mg/L)		
						Value	Average	Value	Average	Value	Average	Value	Average	Value	Average	DA*	Value	Average	DA*	Value	Average	DA*
25-May-09	Rainy	Moderate	08:23	Surface	1	21.2 21.2	21.2	7.7 7.7	7.7	34.3 34.1	34.2	90.1 90.9	90.5	6.5 6.5	6.5	6.6	3.0 3.1	3.1	2.8	7.0 7.0	7.0	8.2
				Middle	5	21.2 21.2	21.2	7.8 7.8	7.8	33.2 33.6	33.4	93.1 93.3	93.2	6.7 6.7	6.7		2.7 2.6	2.7		9.0 9.0	9.0	
				Bottom	9	21.2 21.2	21.2	7.9 7.9	7.9	33.4 33.9	33.7	92.5 89.9	91.2	6.6 6.4	6.5		6.5	2.4 2.6		2.5	9.0 8.0	
27-May-09	Cloudy	Calm	08:10	Surface	1	24.5 24.5	24.5	7.9 7.9	7.9	35.3 35.1	35.2	92.2 92.0	92.1	6.7 6.6	6.7	6.6	3.0 3.0	3.0	3.4	7.0 7.0	7.0	4.8
				Middle	5	24.4 24.4	24.4	7.9 8.1	8.0	35.7 36.1	35.9	90.3 89.8	90.1	6.5 6.5	6.5		3.4 3.5	3.5		3.0 3.0	3.0	
				Bottom	9	24.2 24.2	24.2	7.8 7.7	7.8	36.4 36.4	36.4	89.5 89.0	89.3	6.5 6.4	6.5		6.5	3.6 3.5		3.6	4.0 5.0	
29-May-09	Cloudy	Moderate	09:36	Surface	1	23.4 23.4	23.4	7.6 7.7	7.7	35.2 35.9	35.6	97.6 96.9	97.3	7.1 7.0	7.1	6.8	3.4 3.1	3.3	3.3	5.0 5.0	5.0	8.0
				Middle	5	23.4 23.4	23.4	7.9 7.7	7.8	35.9 35.9	35.9	90.3 90.3	90.3	6.5 6.5	6.5		3.3 3.3	3.3		8.0 8.0	8.0	
				Bottom	9	23.4 23.4	23.4	7.9 8.2	8.1	36.1 36.1	36.1	87.6 87.6	87.6	6.3 6.4	6.4		6.4	3.3 3.3		3.3	11.0 11.0	

Remarks: The reporting limit for laboratory analysis of suspended solids is 2.5 mg/L. For the results below the reporting limit, the SS level will be taken as 2.5 mg/L.

\* DA: Depth-Averaged

\*\* Calm: Small or no wave; Moderate: Between calm and rough; Rough : White capped or rougher



### Water Quality Monitoring Results at Intake B - Mid-Ebb Tide

Date	Weather Condition	Sea Condition**	Sampling Time	Depth (m)		Water Temperature (°C)		pH		Salinity ppt		DO Saturation (%)		Dissolved Oxygen (mg/L)			Turbidity (NTU)			Suspended Solids (mg/L)		
						Value	Average	Value	Average	Value	Average	Value	Average	Value	Average	DA*	Value	Average	DA*	Value	Average	DA*
1-May-09	Sunny	Moderate	16:49	Surface	1	22.9 22.9	22.9	7.6 7.5	7.6	36.3 36.6	36.5	94.9 94.7	94.8	7.4 7.4	7.4	7.2	3.3 3.6	3.5	2.6	9.0 9.0	9.0	9.3
				Middle	6	22.9 22.9	22.9	7.8 7.8	7.8	36.7 36.7	36.7	89.8 88.6	89.2	6.9 6.8	6.9		2.1 1.9	2.0		8.0 8.0	8.0	
				Bottom	11	22.8 22.9	22.9	7.7 7.9	7.8	36.1 37.2	36.7	88.1 88.3	88.2	6.8 6.8	6.8		2.3 2.1	2.2		11.0 11.0	11.0	
4-May-09	Sunny	Moderate	09:17	Surface	1	22.5 22.5	22.5	7.8 7.6	7.7	36.6 35.7	36.2	90.6 89.6	90.1	6.4 6.4	6.4	6.4	3.1 3.3	3.2	3.0	6.0 6.0	6.0	7.0
				Middle	6	22.6 22.6	22.6	8.0 8.0	8.0	35.2 35.5	35.4	88.9 89.4	89.2	6.4 6.4	6.4		3.0 3.0	3.0		4.0 4.0	4.0	
				Bottom	11	22.7 22.8	22.8	7.6 7.8	7.7	36.4 36.4	36.4	88.8 89.4	89.1	6.2 6.3	6.3		2.7 2.7	2.7		11.0 11.0	11.0	
6-May-09	Sunny	Moderate	10:34	Surface	1	26.0 26.0	26.0	7.9 8.0	8.0	36.9 36.9	36.9	90.6 88.4	89.5	6.6 6.4	6.5	6.3	2.4 2.4	2.4	3.1	7.0 8.0	7.5	8.8
				Middle	6	25.9 25.9	25.9	8.1 8.0	8.1	37.1 37.0	37.1	81.6 82.0	81.8	6.1 6.1	6.1		3.6 3.4	3.5		10.0 10.0	10.0	
				Bottom	11	25.9 25.9	25.9	8.0 8.1	8.1	36.5 37.1	36.8	84.8 84.8	84.8	6.2 6.2	6.2		3.2 3.3	3.3		9.0 9.0	9.0	
8-May-09	Sunny	Calm	11:40	Surface	1	23.4 23.4	23.4	7.9 7.7	7.8	36.3 36.5	36.4	92.2 92.1	92.2	6.5 6.5	6.5	6.5	4.7 4.9	4.8	4.7	9.0 10.0	9.5	10.2
				Middle	6	23.2 23.2	23.2	8.0 8.1	8.1	36.6 36.2	36.4	92.4 92.6	92.5	6.5 6.5	6.5		4.9 5.0	5.0		10.0 10.0	10.0	
				Bottom	11	23.2 23.2	23.2	7.8 8.0	7.9	36.2 36.1	36.2	89.8 89.8	89.8	6.2 6.2	6.2		4.2 4.1	4.2		11.0 11.0	11.0	
11-May-09	Sunny	Calm	14:22	Surface	1	25.4 25.4	25.4	7.9 7.8	7.9	34.6 34.6	34.6	100.4 96.8	98.6	7.0 6.8	6.9	6.8	3.0 3.1	3.1	2.9	5.0 5.0	5.0	7.8
				Middle	5.5	25.2 25.2	25.2	8.0 8.0	8.0	34.6 33.4	34.0	90.5 90.4	90.5	6.5 6.6	6.6		2.8 2.8	2.8		9.0 9.0	9.0	
				Bottom	10	25.2 25.2	25.2	8.1 8.2	8.2	33.9 34.4	34.2	90.4 91.3	90.9	6.6 6.6	6.6		2.8 2.9	2.9		9.0 10.0	9.5	
13-May-09	Sunny	Calm	14:20	Surface	1	24.3 24.4	24.4	8.2 7.6	7.9	33.3 33.3	33.3	108.2 104.4	106.3	7.4 7.1	7.3	6.9	1.9 1.9	1.9	2.2	4.0 5.0	4.5	6.8
				Middle	5.5	24.5 24.5	24.5	7.9 8.2	8.1	33.4 33.5	33.5	94.8 92.8	93.8	6.5 6.4	6.5		2.2 2.2	2.2		8.0 8.0	8.0	
				Bottom	10	24.5 24.5	24.5	7.8 7.8	7.8	33.8 33.5	33.7	93.9 93.2	93.6	6.5 6.5	6.5		2.6 2.6	2.6		8.0 8.0	8.0	
15-May-09	Sunny	Calm	16:58	Surface	1	27.5 27.5	27.5	7.7 7.8	7.8	36.9 36.9	36.9	91.4 91.4	91.4	6.8 6.8	6.8	6.8	2.7 2.8	2.8	3.1	5.0 5.0	5.0	4.8
				Middle	5	27.5 27.5	27.5	7.9 7.9	7.9	36.8 36.8	36.8	90.5 92.3	91.4	6.7 6.8	6.8		3.1 3.1	3.1		4.0 5.0	4.5	
				Bottom	9	27.4 27.4	27.4	7.8 8.0	7.9	36.8 36.8	36.8	91.1 91.1	91.1	6.8 6.8	6.8		3.3 3.3	3.3		5.0 5.0	5.0	
18-May-09	Sunny	Moderate	08:44	Surface	1	25.6 25.5	25.6	7.7 7.9	7.8	32.8 32.8	32.8	96.7 97.6	97.2	6.4 6.4	6.4	6.7	1.2 1.2	1.2	1.5	6.0 6.0	6.0	6.3
				Middle	5	24.9 24.9	24.9	7.8 7.9	7.9	33.4 33.5	33.5	104.1 103.8	104.0	6.9 6.9	6.9		1.0 1.0	1.0		8.0 8.0	8.0	
				Bottom	9	24.6 24.6	24.6	8.0 8.0	8.0	33.8 33.9	33.9	96.2 94.2	95.2	6.3 6.1	6.2		2.2 2.2	2.2		5.0 5.0	5.0	
20-May-09	Fine	Calm	10:35	Surface	1	28.7 28.7	28.7	7.7 8.3	8.0	36.8 36.8	36.8	98.5 97.6	98.1	6.6 6.6	6.6	6.5	6.4 6.6	6.5	7.3	6.0 7.0	6.5	7.2
				Middle	6	28.2 28.2	28.2	8.3 8.6	8.5	37.2 37.2	37.2	95.1 95.1	95.1	6.4 6.4	6.4		7.6 7.6	7.6		7.0 7.0	7.0	
				Bottom	11	28.2 28.2	28.2	8.2 8.5	8.4	37.3 37.3	37.3	93.8 94.0	93.9	6.3 6.4	6.4		7.7 7.6	7.7		8.0 8.0	8.0	

### Water Quality Monitoring Results at Intake B - Mid-Ebb Tide

Date	Weather Condition	Sea Condition**	Sampling Time	Depth (m)		Water Temperature (°C)		pH		Salinity ppt		DO Saturation (%)		Dissolved Oxygen (mg/L)			Turbidity(NTU)			Suspended Solids (mg/L)			
						Value	Average	Value	Average	Value	Average	Value	Average	Value	Average	DA*	Value	Average	DA*	Value	Average	DA*	
22-May-09	Cloudy	Calm	10:48	Surface	1	26.4 26.4	26.4	7.6 7.6	7.6	30.1 30.2	30.2	112.0 108.9	110.5	7.5 7.3	7.4	7.2	1.0 1.1	1.1	1.3	6.0 6.0	6.0	6.8	
				Middle	5	26.3 26.3	26.3	7.8 7.7	7.8	30.3 30.3	30.3	103.3 103.2	103.3	6.9 6.9	6.9		1.3 1.4	1.4		5.0 6.0	5.5		
				Bottom	9	26.1 26.1	26.1	7.9 8.1	8.0	30.7 30.7	30.7	98.1 98.1	98.1	6.5 6.5	6.5		6.5	1.5 1.5		1.5	9.0 9.0		9.0
25-May-09	Rainy	Moderate	13:31	Surface	1	21.2 21.2	21.2	8.0 8.1	8.1	34.8 33.2	34.0	88.3 88.3	88.3	6.4 6.3	6.4	6.4	2.6 2.7	2.7	2.5	8.0 9.0	8.5	7.8	
				Middle	6	21.2 21.2	21.2	8.0 8.0	8.0	33.9 35.0	34.5	88.6 88.6	88.6	6.4 6.4	6.4		2.9 2.5	2.7		6.0 7.0	6.5		
				Bottom	11	21.2 21.2	21.2	7.7 7.9	7.8	34.9 34.4	34.7	87.3 87.1	87.2	6.2 6.2	6.2		6.2	2.1 1.9		2.0	8.0 9.0		8.5
27-May-09	Cloudy	Calm	14:21	Surface	1	24.5 24.5	24.5	7.9 7.8	7.9	35.8 35.9	35.9	87.4 87.5	87.5	6.4 6.4	6.4	6.4	2.8 2.9	2.9	3.1	4.0 4.0	4.0	6.2	
				Middle	5.5	24.2 24.2	24.2	7.9 7.9	7.9	36.3 36.1	36.2	86.6 86.6	86.6	6.4 6.4	6.4		2.7 2.6	2.7		4.0 5.0	4.5		
				Bottom	10	24.1 24.1	24.1	7.9 8.0	8.0	36.1 36.1	36.1	86.1 86.1	86.1	6.3 6.3	6.3		6.3	3.4 3.9		3.7	10.0 10.0		10.0
29-May-09	Cloudy	Moderate	16:47	Surface	1	22.8 23.1	23.0	7.9 7.7	7.8	35.2 36.4	35.8	97.8 97.9	97.9	7.2 7.1	7.2	6.9	3.0 2.9	3.0	3.2	4.0 4.0	4.0	5.7	
				Middle	5.5	23.3 23.3	23.3	7.9 8.0	8.0	36.5 35.7	36.1	90.3 89.9	90.1	6.5 6.5	6.5		6.5	3.3 3.3		3.3	6.0 6.0		6.0
				Bottom	10	23.2 23.2	23.2	7.9 7.8	7.9	36.1 35.9	36.0	87.4 87.1	87.3	6.3 6.3	6.3		6.3	3.4 3.3		3.4	7.0 7.0		7.0

Remarks: \* DA: Depth-Averaged  
 \*\* Calm: Small or no wave; Moderate: Between calm and rough; Rough : White capped or rougher

### Water Quality Monitoring Results at Intake B - Mid-Flood Tide

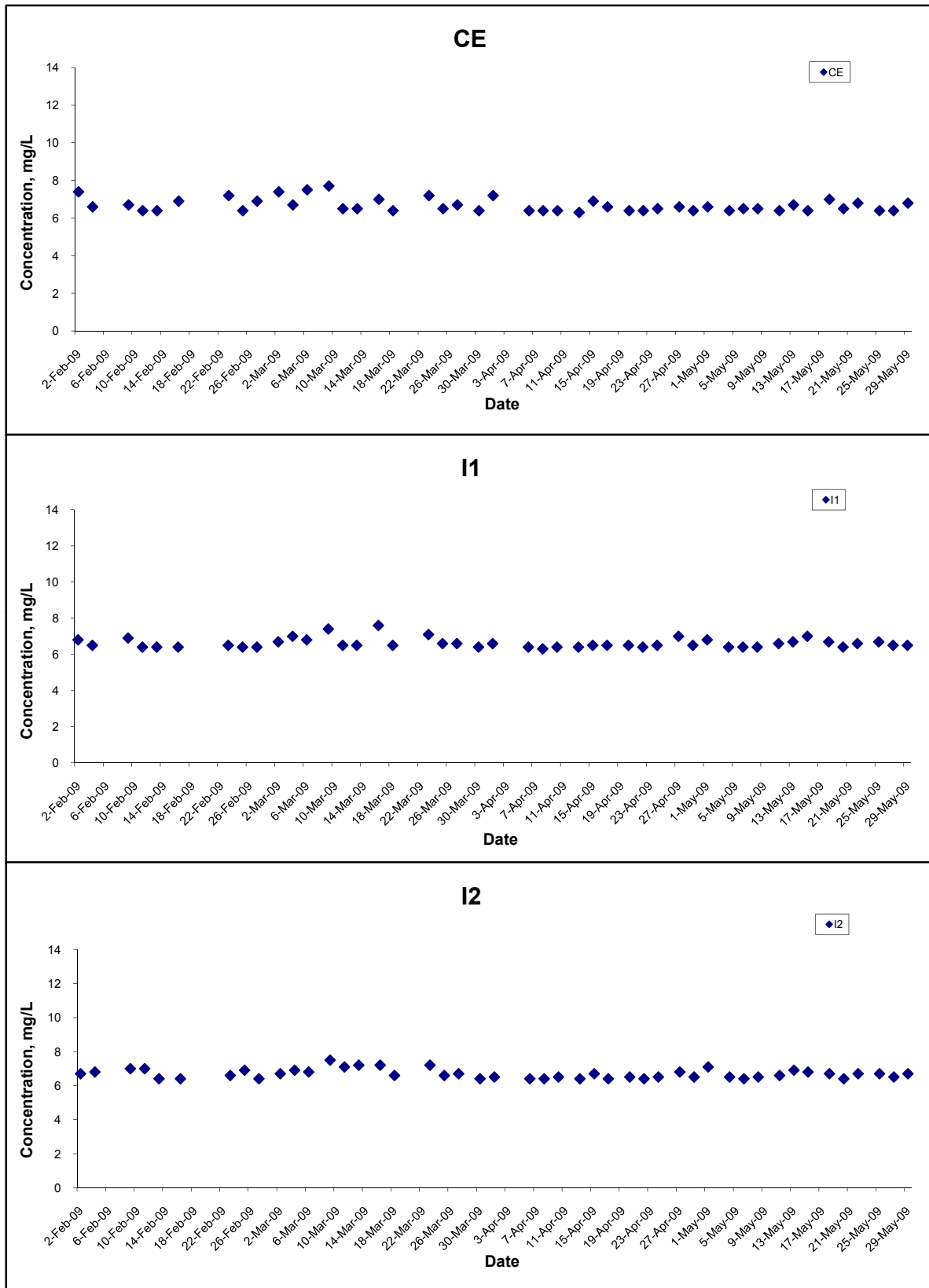
Date	Weather Condition	Sea Condition**	Sampling Time	Depth (m)		Water Temperature (°C)		pH		Salinity ppt		DO Saturation (%)		Dissolved Oxygen (mg/L)			Turbidity(NTU)			Suspended Solids (mg/L)		
						Value	Average	Value	Average	Value	Average	Value	Average	Value	Average	DA*	Value	Average	DA*	Value	Average	DA*
1-May-09	Sunny	Moderate	10:23	Surface	1	22.9 22.9	22.9	7.8 7.8	7.8	33.7 35.1	34.4	97.0 96.2	96.6	7.4 7.4	7.4	7.3	3.6 3.4	3.5	3.1	10.0 10.0	10.0	10.0
				Middle	6	22.9 22.9	22.9	7.9 7.9	7.9	37.0 36.9	37.0	94.0 93.7	93.9	7.2 7.2	7.2		3.1 3.1	3.1		9.0 9.0	9.0	
				Bottom	11	22.9 22.9	22.9	7.6 7.8	7.7	37.0 34.9	36.0	93.3 93.2	93.3	7.2 7.2	7.2		2.8 2.6	2.7		11.0 11.0	11.0	
4-May-09	Sunny	Moderate	14:29	Surface	1	23.0 22.9	23.0	7.8 7.8	7.8	36.3 36.3	36.3	96.6 96.8	96.7	6.8 6.8	6.8	6.8	2.9 2.7	2.8	2.4	4.0 5.0	4.5	6.8
				Middle	6	22.8 22.7	22.8	7.7 7.7	7.7	36.3 36.3	36.3	96.8 96.6	96.7	6.8 6.8	6.8		2.1 1.9	2.0		10.0 10.0	10.0	
				Bottom	11	22.7 22.6	22.7	7.7 7.7	7.7	36.3 36.5	36.4	92.4 92.2	92.3	6.5 6.5	6.5		2.3 2.2	2.3		6.0 6.0	6.0	
6-May-09	Sunny	Moderate	17:12	Surface	1	26.1 26.1	26.1	8.2 8.0	8.1	34.6 36.5	35.6	90.8 89.2	90.0	6.7 6.6	6.7	6.5	3.3 3.2	3.3	2.8	9.0 9.0	9.0	8.8
				Middle	6	26.1 26.1	26.1	7.9 7.9	7.9	36.5 36.5	36.5	85.4 85.4	85.4	6.3 6.3	6.3		3.0 3.3	3.2		7.0 8.0	7.5	
				Bottom	11	26.1 26.1	26.1	8.0 7.9	8.0	34.4 34.3	34.4	84.1 85.0	84.6	6.2 6.2	6.2		2.1 1.9	2.0		10.0 10.0	10.0	
8-May-09	Fine	Calm	17:07	Surface	1	23.4 23.3	23.4	8.0 7.9	8.0	34.1 34.2	34.2	92.5 92.8	92.7	6.6 6.6	6.6	6.6	4.1 4.1	4.1	3.7	12.0 12.0	12.0	10.2
				Middle	6	23.2 23.2	23.2	7.9 7.8	7.9	36.1 36.6	36.4	93.3 92.9	93.1	6.6 6.5	6.6		3.1 3.3	3.2		10.0 10.0	10.0	
				Bottom	11	23.1 23.1	23.1	7.8 7.9	7.9	33.3 36.8	35.1	90.0 90.3	90.2	6.4 6.3	6.4		3.8 3.8	3.8		9.0 10.0	9.5	
11-May-09	Sunny	Calm	08:33	Surface	1	25.4 25.3	25.4	8.3 8.2	8.3	34.6 34.5	34.6	91.0 90.5	90.8	6.7 6.6	6.7	6.6	3.2 3.3	3.3	3.2	8.0 9.0	8.5	11.5
				Middle	5.5	25.2 25.2	25.2	8.2 7.9	8.1	33.6 33.8	33.7	87.6 86.5	87.1	6.5 6.3	6.4		3.2 3.2	3.2		14.0 14.0	14.0	
				Bottom	10	25.1 25.1	25.1	7.9 8.1	8.0	35.0 35.0	35.0	88.1 88.2	88.2	6.4 6.4	6.4		3.2 3.2	3.2		12.0 12.0	12.0	
13-May-09	Sunny	Calm	09:03	Surface	1	24.1 24.2	24.2	8.2 8.1	8.2	34.3 34.3	34.3	98.9 99.3	99.1	6.9 7.0	7.0	6.7	2.0 1.9	2.0	2.4	3.0 3.0	3.0	4.3
				Middle	6	24.3 24.4	24.4	8.0 7.7	7.9	34.3 34.4	34.4	91.7 90.0	90.9	6.5 6.2	6.4		2.4 2.5	2.5		5.0 5.0	5.0	
				Bottom	11	24.3 24.3	24.3	7.7 7.9	7.8	34.6 33.9	34.3	89.9 90.0	90.0	6.2 6.3	6.3		2.5 2.6	2.6		5.0 5.0	5.0	
18-May-09	Sunny	Moderate	13:32	Surface	1	26.5 26.2	26.4	8.0 7.9	8.0	32.6 32.7	32.7	100.8 99.9	100.4	6.6 6.6	6.6	6.7	1.2 1.3	1.3	1.5	5.0 6.0	5.5	7.5
				Middle	5.5	25.2 25.1	25.2	7.9 8.0	8.0	33.3 33.4	33.4	101.0 101.4	101.2	6.7 6.8	6.8		1.1 1.0	1.1		7.0 7.0	7.0	
				Bottom	10	24.8 24.8	24.8	7.9 8.0	8.0	33.8 33.9	33.9	96.5 94.3	95.4	6.3 6.1	6.2		2.1 2.3	2.2		10.0 10.0	10.0	
20-May-09	Fine	Calm	15:16	Surface	1	28.6 28.6	28.6	7.8 7.7	7.8	36.2 36.2	36.2	99.2 99.1	99.2	6.7 6.7	6.7	6.7	6.5 6.5	6.5	7.3	9.0 9.0	9.0	6.8
				Middle	6	28.2 28.2	28.2	7.7 8.4	8.1	37.3 37.3	37.3	97.4 97.4	97.4	6.6 6.6	6.6		7.3 7.4	7.4		5.0 6.0	5.5	
				Bottom	11	28.1 28.1	28.1	8.1 8.4	8.3	37.6 37.6	37.6	96.2 95.6	95.9	6.5 6.5	6.5		7.7 8.0	7.9		6.0 6.0	6.0	
22-May-09	Cloudy	Calm	15:47	Surface	1	26.5 26.4	26.5	8.2 8.1	8.2	29.8 29.8	29.8	101.2 104.6	102.9	6.7 6.9	6.8	6.9	0.7 0.8	0.8	1.1	8.0 9.0	8.5	9.2
				Middle	5.5	26.2 26.2	26.2	8.1 8.2	8.2	30.2 30.2	30.2	105.3 103.7	104.5	7.0 6.9	7.0		1.1 1.1	1.1		8.0 8.0	8.0	
				Bottom	10	26.1 26.1	26.1	7.8 7.8	7.8	30.3 30.4	30.4	99.7 99.3	99.5	6.6 6.6	6.6		1.5 1.5	1.5		11.0 11.0	11.0	

### Water Quality Monitoring Results at Intake B - Mid-Flood Tide

Date	Weather Condition	Sea Condition**	Sampling Time	Depth (m)		Water Temperature (°C)		pH		Salinity ppt		DO Saturation (%)		Dissolved Oxygen (mg/L)			Turbidity(NTU)			Suspended Solids (mg/L)		
						Value	Average	Value	Average	Value	Average	Value	Average	Value	Average	DA*	Value	Average	DA*	Value	Average	DA*
25-May-09	Rainy	Moderate	08:33	Surface	1	21.1 21.1	21.1	7.8 7.8	7.8	33.2 33.4	33.3	95.7 96.3	96.0	6.8 6.9	6.9	7.0	2.2 2.2	2.2	2.0	6.0 6.0	6.0	5.8
				Middle	6	21.2 21.2	21.2	7.8 7.8	7.8	33.3 33.2	33.3	97.4 97.4	97.4	7.0 6.9	7.0		1.7 1.9	1.8		6.0 6.0	6.0	
				Bottom	11	21.2 21.2	21.2	8.0 7.9	8.0	33.0 32.7	32.9	96.5 96.3	96.4	7.0 6.9	7.0	7.0	2.0 2.1	2.1		5.0 6.0	5.5	
27-May-09	Cloudy	Calm	08:40	Surface	1	24.6 24.6	24.6	7.9 7.8	7.9	35.7 36.0	35.9	90.1 89.5	89.8	6.5 6.4	6.5	6.5	3.0 3.1	3.1	3.3	5.0 5.0	5.0	5.8
				Middle	6	24.2 24.2	24.2	7.8 8.0	7.9	35.0 36.4	35.7	88.2 88.0	88.1	6.4 6.4	6.4		3.2 3.2	3.2		4.0 5.0	4.5	
				Bottom	11	24.1 24.1	24.1	7.9 8.0	8.0	35.2 35.0	35.1	87.2 87.2	87.2	6.3 6.4	6.4	6.4	3.4 3.7	3.6		8.0 8.0	8.0	
29-May-09	Cloudy	Moderate	10:02	Surface	1	23.3 23.3	23.3	8.3 8.1	8.2	35.1 35.1	35.1	93.5 93.6	93.6	6.8 6.8	6.8	6.6	3.4 2.9	3.2	3.0	5.0 5.0	5.0	8.0
				Middle	6	23.2 23.2	23.2	8.0 7.7	7.9	36.1 36.3	36.2	89.2 88.9	89.1	6.4 6.4	6.4		2.6 2.7	2.7		9.0 9.0	9.0	
				Bottom	11	23.2 23.2	23.2	7.8 7.6	7.7	36.4 36.4	36.4	86.8 86.8	86.8	6.3 6.3	6.3	6.3	3.0 3.1	3.1		10.0 10.0	10.0	

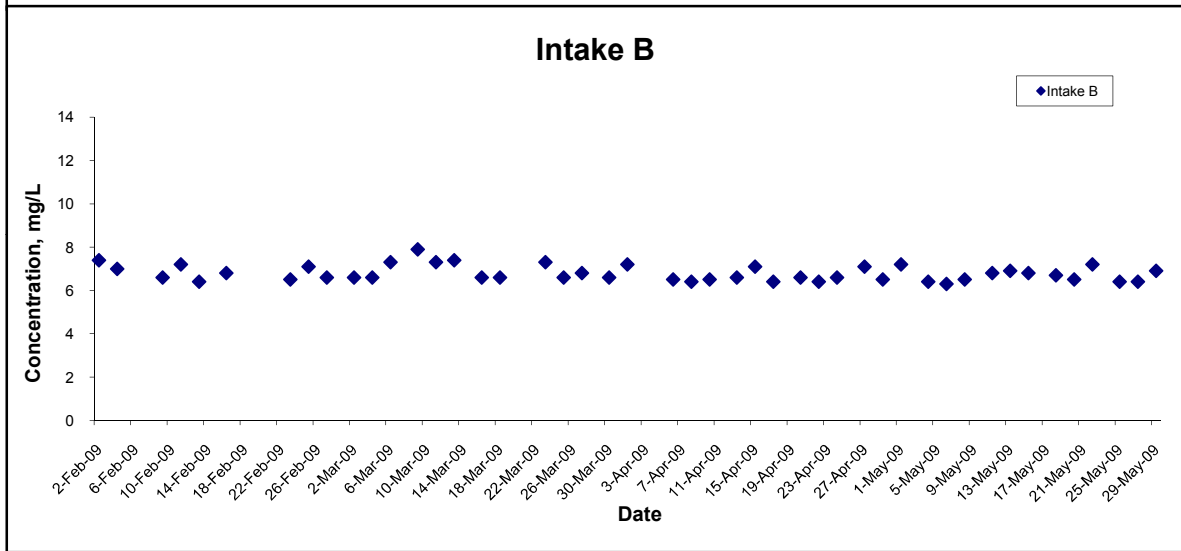
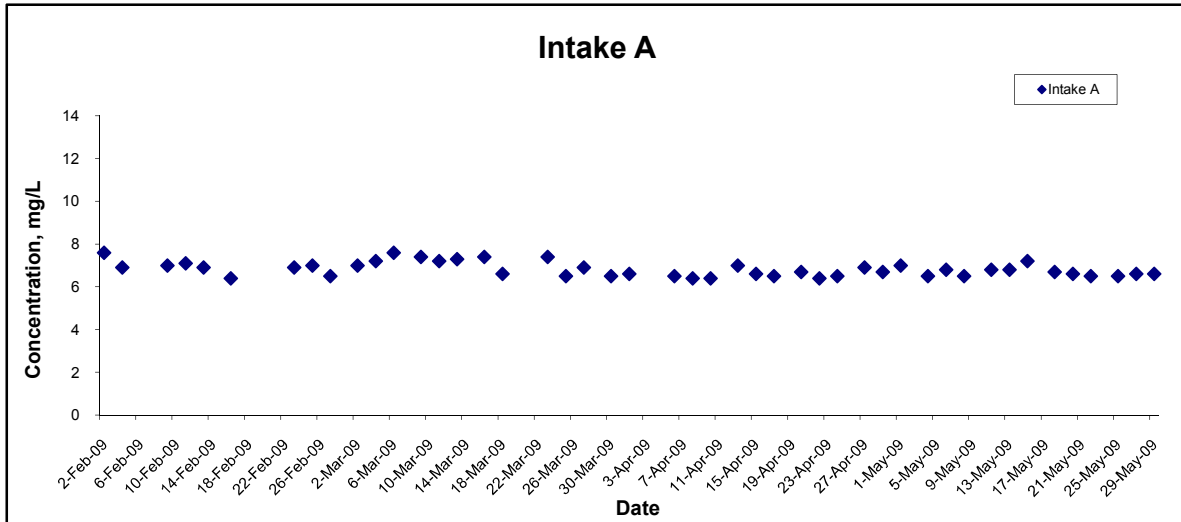
Remarks: \* DA: Depth-Averaged  
 \*\* Calm: Small or no wave; Moderate: Between calm and rough; Rough : White capped or rougher

## Dissolved Oxygen (Surface & Middle) at Mid-Ebb Tide



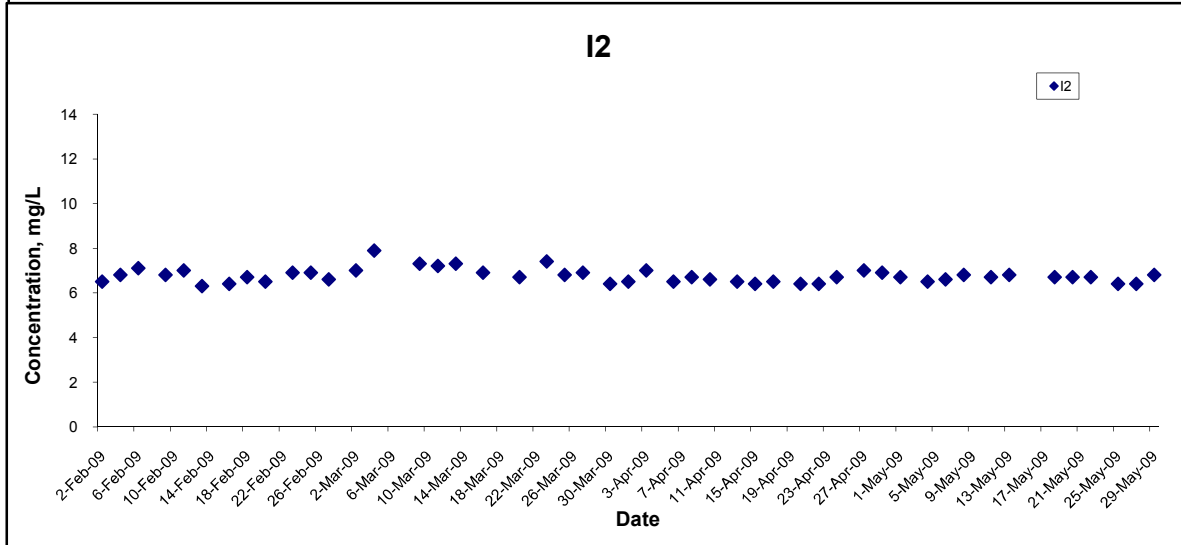
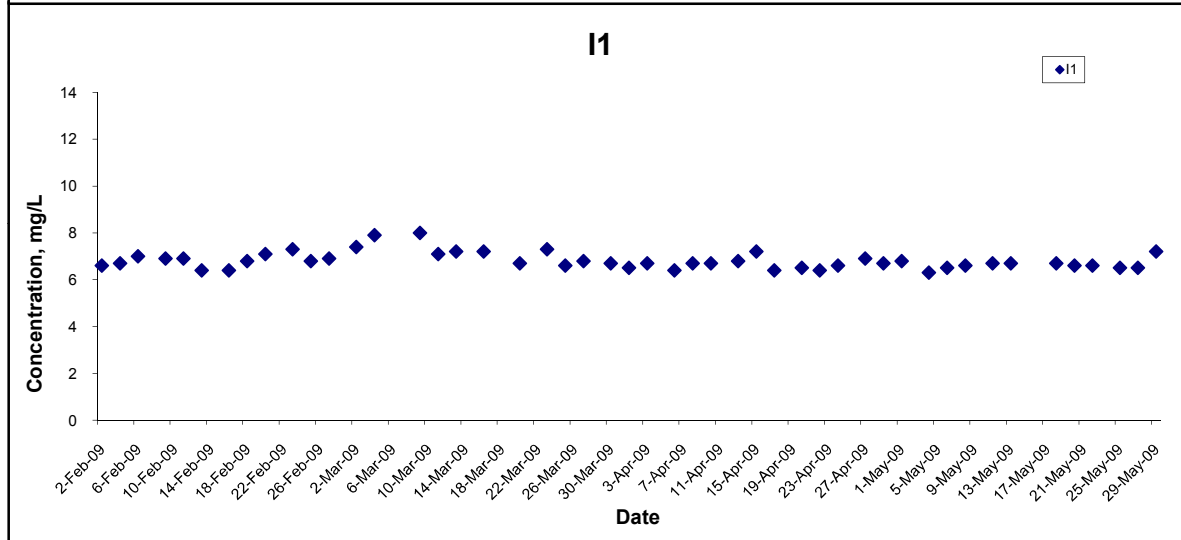
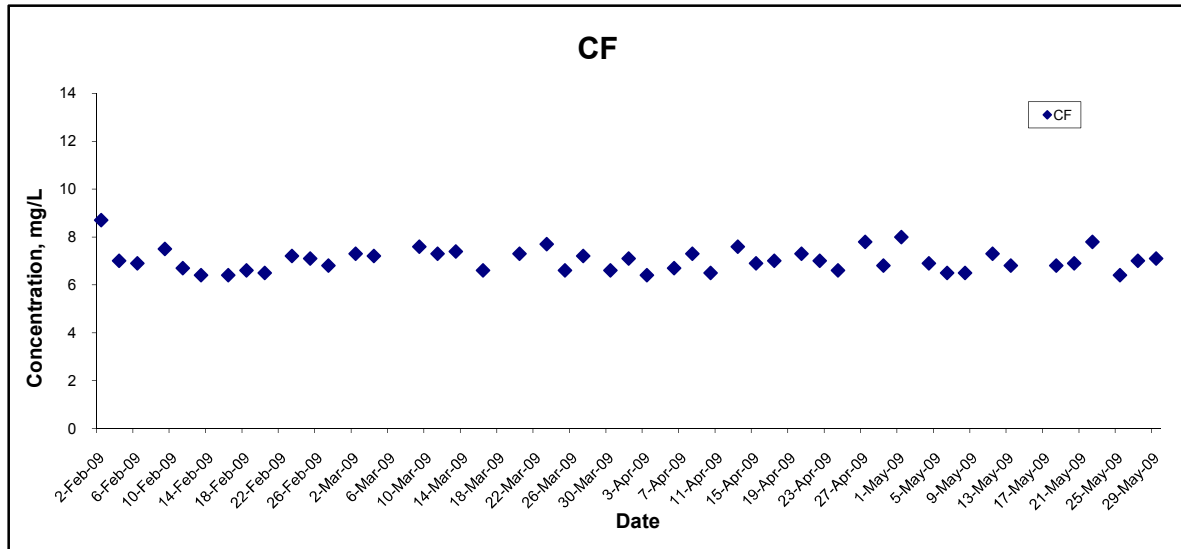
Title Contract No. DC/2007/10 Design and Construction of Hong Kong West Drainage Tunnel  Graphical Presentation of Water Quality Monitoring Results	Scale N.T.S	Project No. MA8001	
	Date May 09	Appendix H	

## Dissolved Oxygen (Surface & Middle) at Mid-Ebb Tide



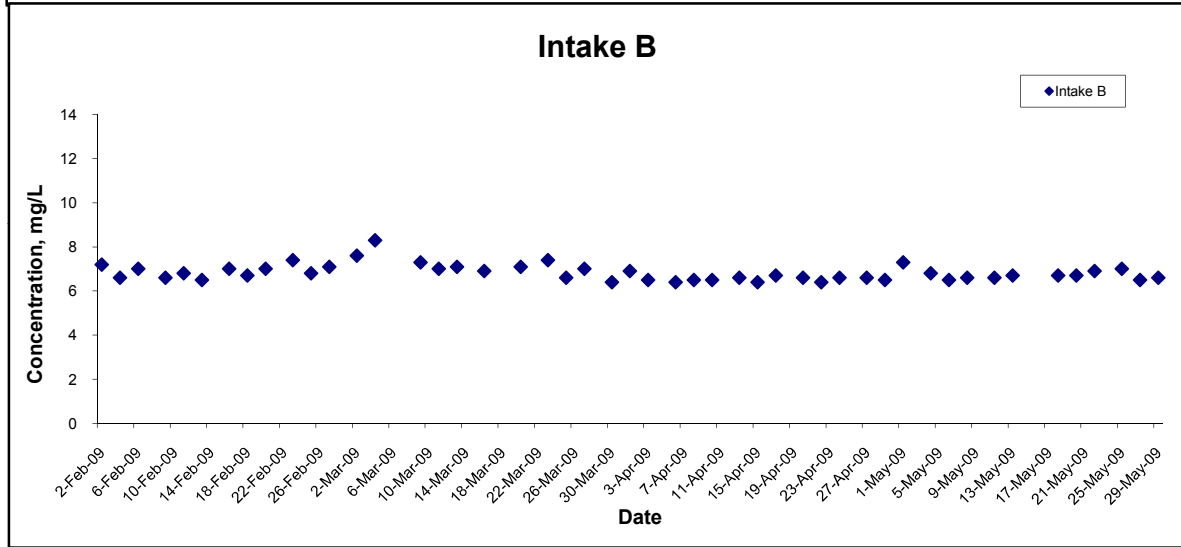
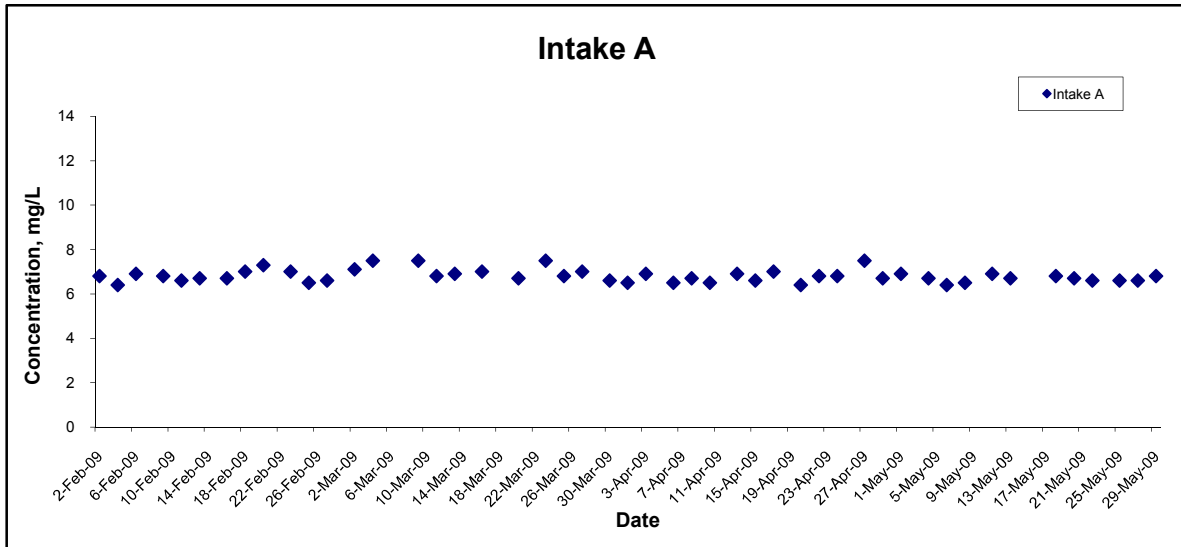
Title Contract No. DC/2007/10 Design and Construction of Hong Kong West Drainage Tunnel  Graphical Presentation of Water Quality Monitoring Results	Scale N.T.S	Project No. MA8001	
	Date May 09	Appendix H	

## Dissolved Oxygen (Surface & Middle) at Mid-Flood Tide



Title Contract No. DC/2007/10 Design and Construction of Hong Kong West Drainage Tunnel  Graphical Presentation of Water Quality Monitoring Results	Scale N.T.S	Project No. MA8001	
	Date May 09	Appendix H	

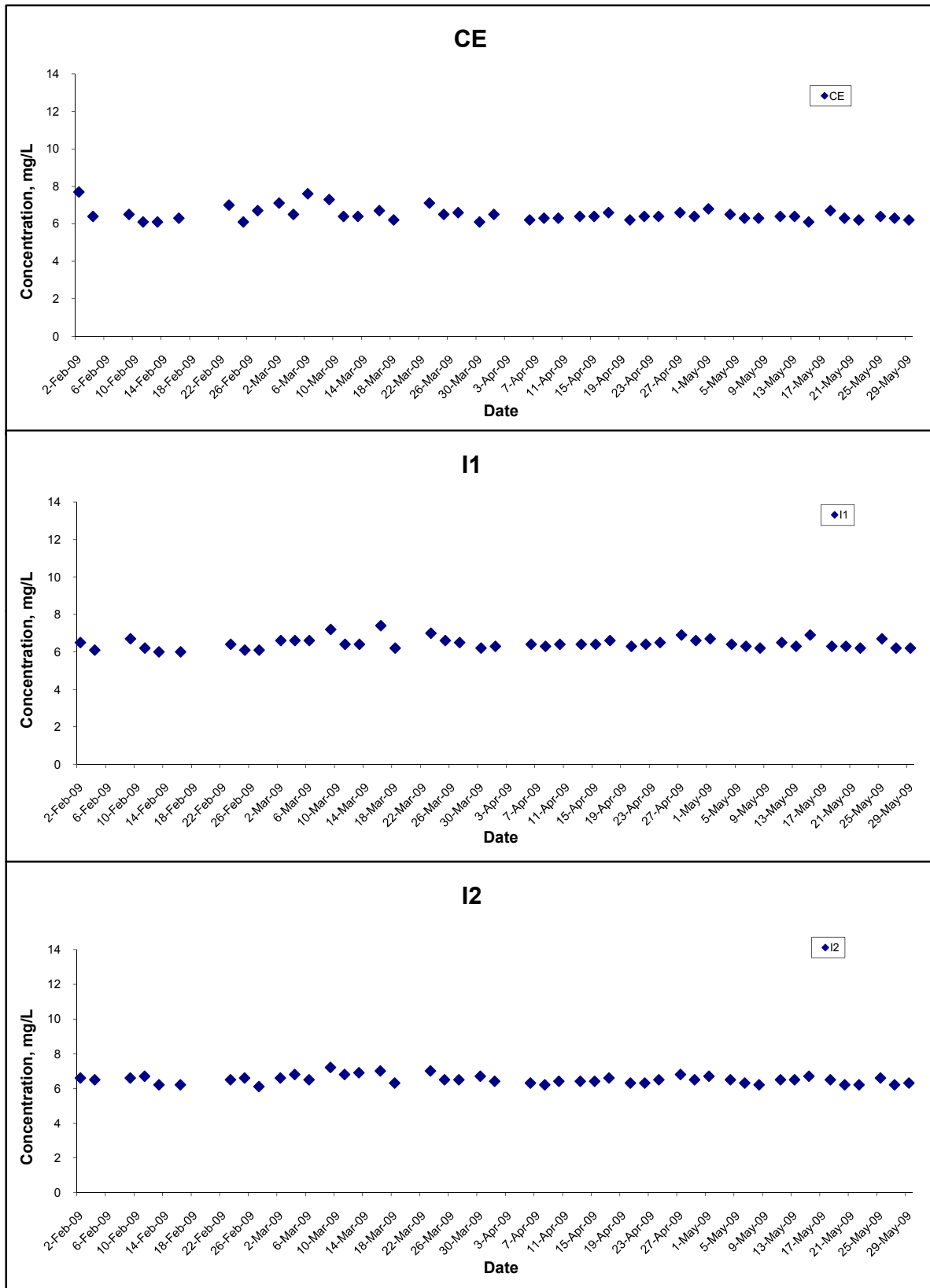
## Dissolved Oxygen (Surface & Middle) at Mid-Flood Tide



Title Contract No. DC/2007/10 Design and Construction of Hong Kong West Drainage Tunnel  Graphical Presentation of Water Quality Monitoring Results	Scale N.T.S	Project No. MA8001	
	Date May 09	Appendix H	

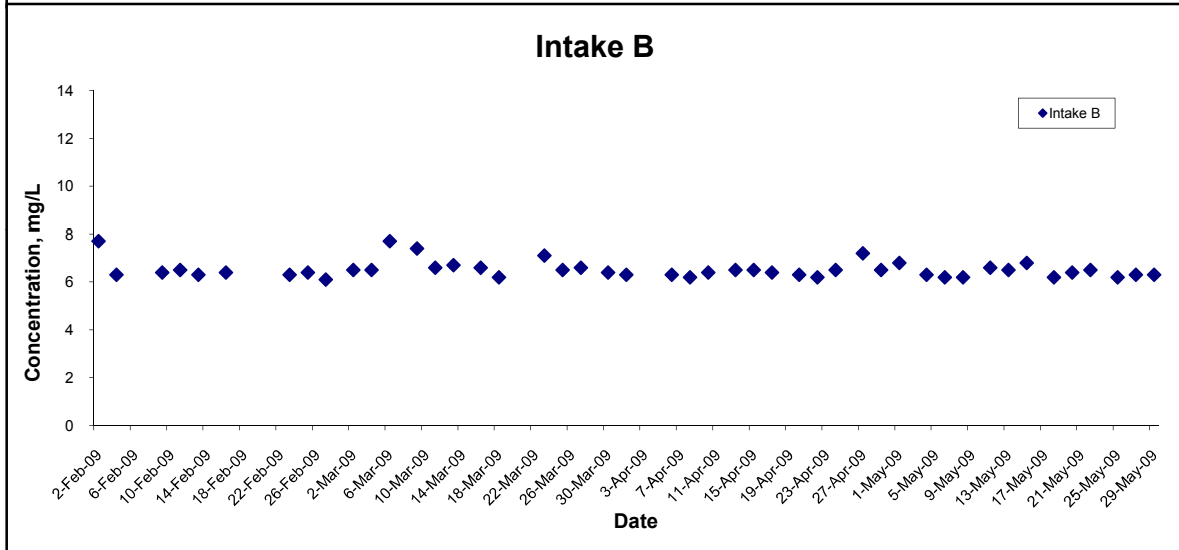
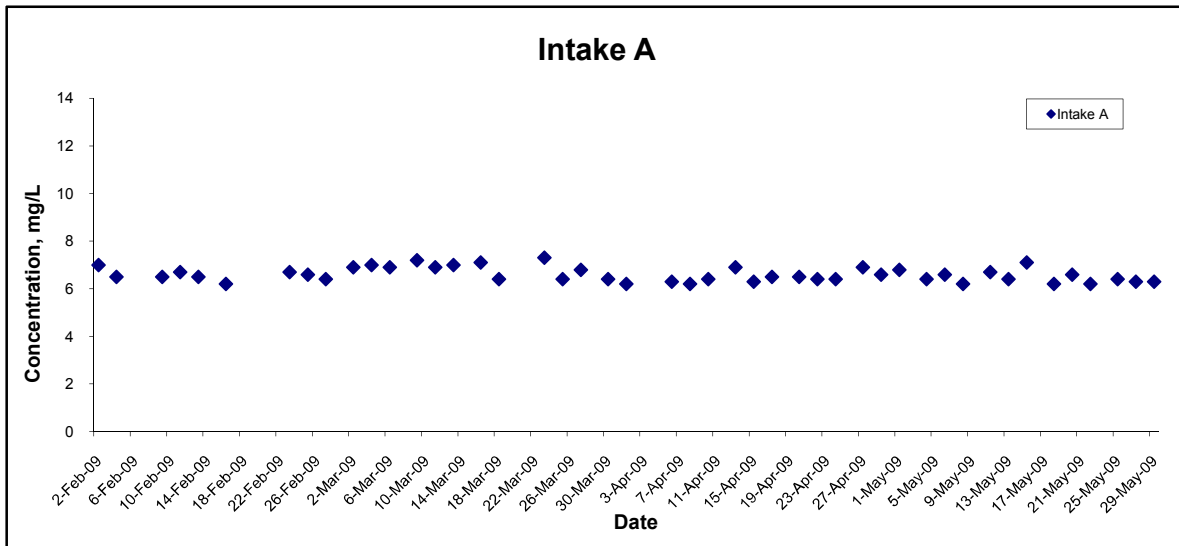


## Dissolved Oxygen (Bottom) at Mid-Ebb Tide



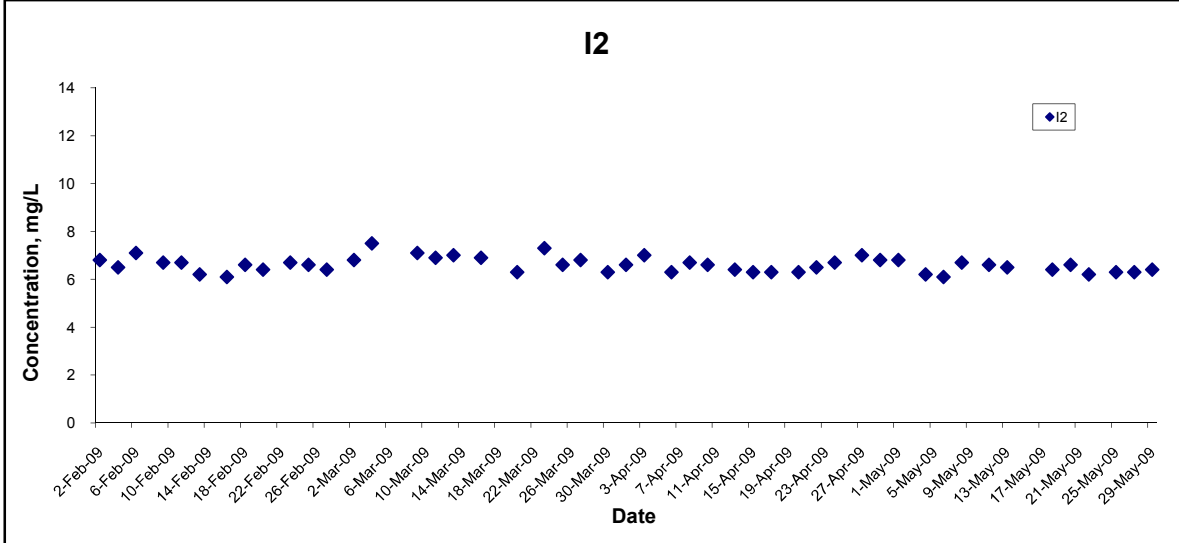
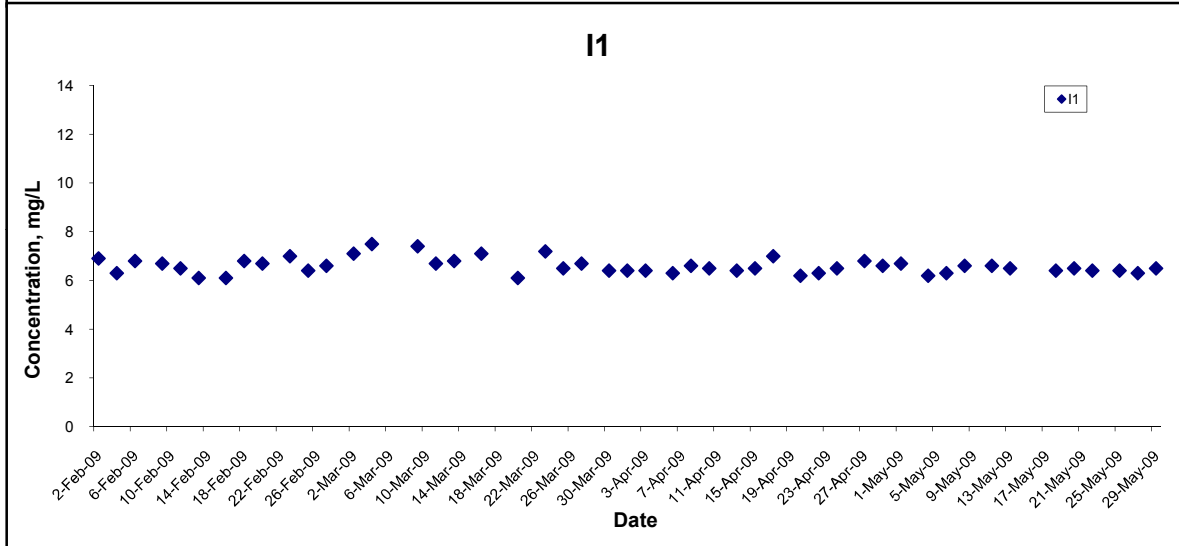
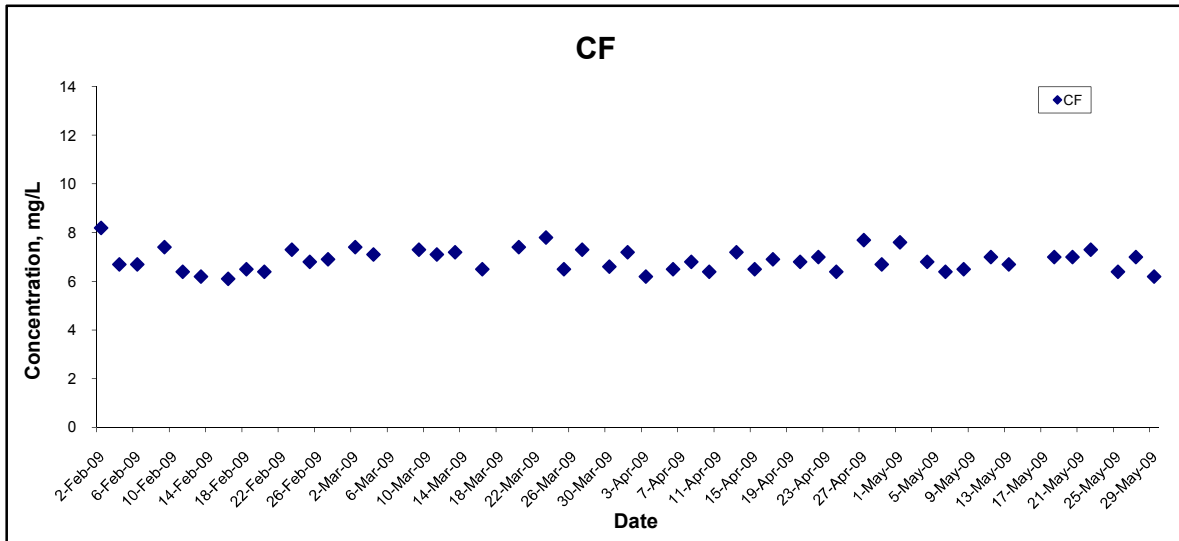
Title Contract No. DC/2007/10 Design and Construction of Hong Kong West Drainage Tunnel  Graphical Presentation of Water Quality Monitoring Results	Scale N.T.S	Project No. MA8001	
	Date May 09	Appendix H	

## Dissolved Oxygen (Bottom) at Mid-Ebb Tide



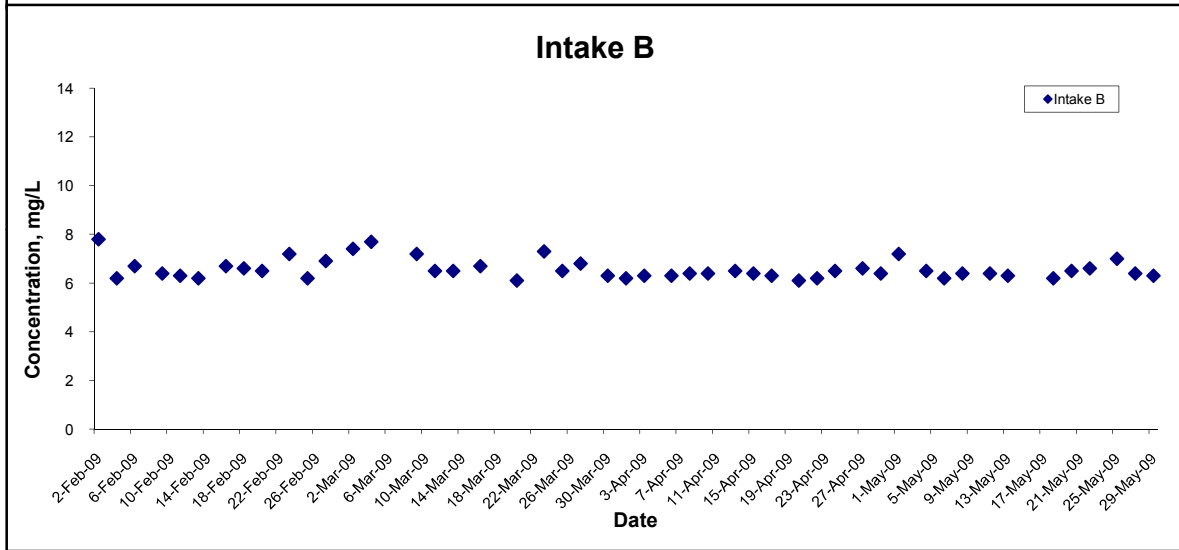
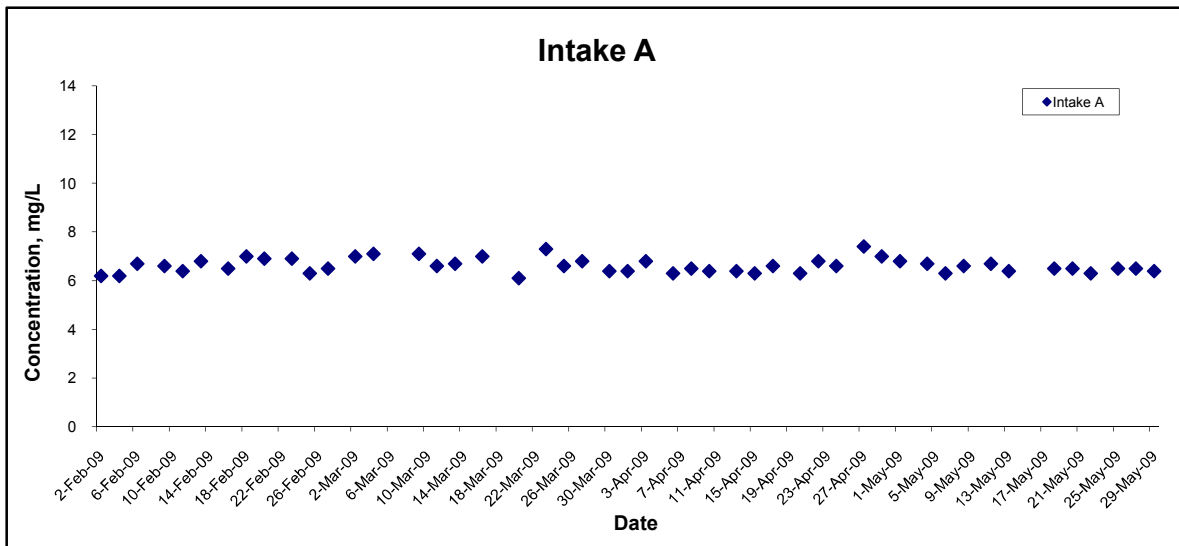
Title Contract No. DC/2007/10 Design and Construction of Hong Kong West Drainage Tunnel  Graphical Presentation of Water Quality Monitoring Results	Scale N.T.S	Project No. MA8001	
	Date May 09	Appendix H	

## Dissolved Oxygen (Bottom) at Mid-Flood Tide



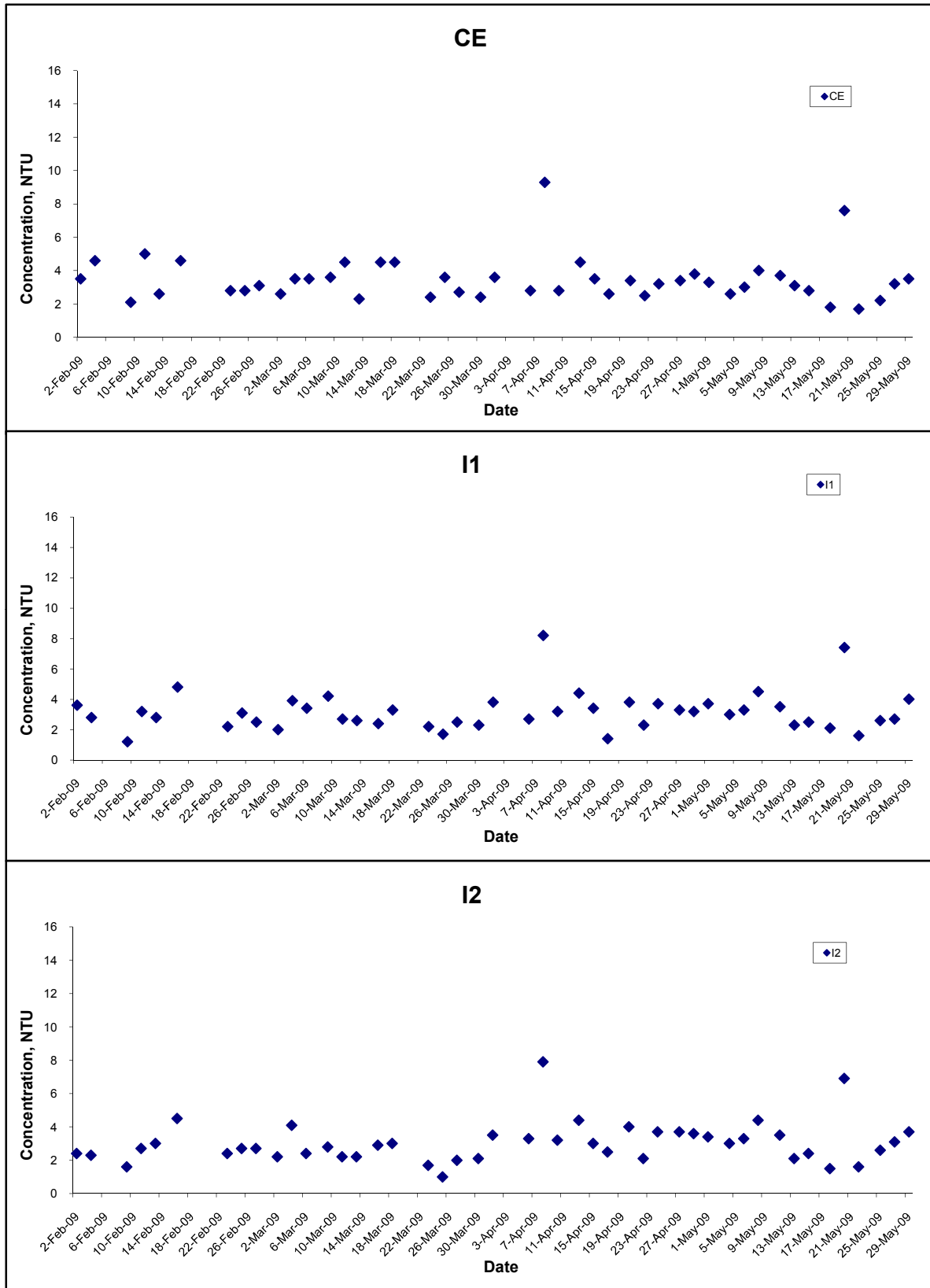
Title Contract No. DC/2007/10 Design and Construction of Hong Kong West Drainage Tunnel  Graphical Presentation of Water Quality Monitoring Results	Scale N.T.S	Project No. MA8001	
	Date May 09	Appendix H	

## Dissolved Oxygen (Bottom) at Mid-Flood Tide



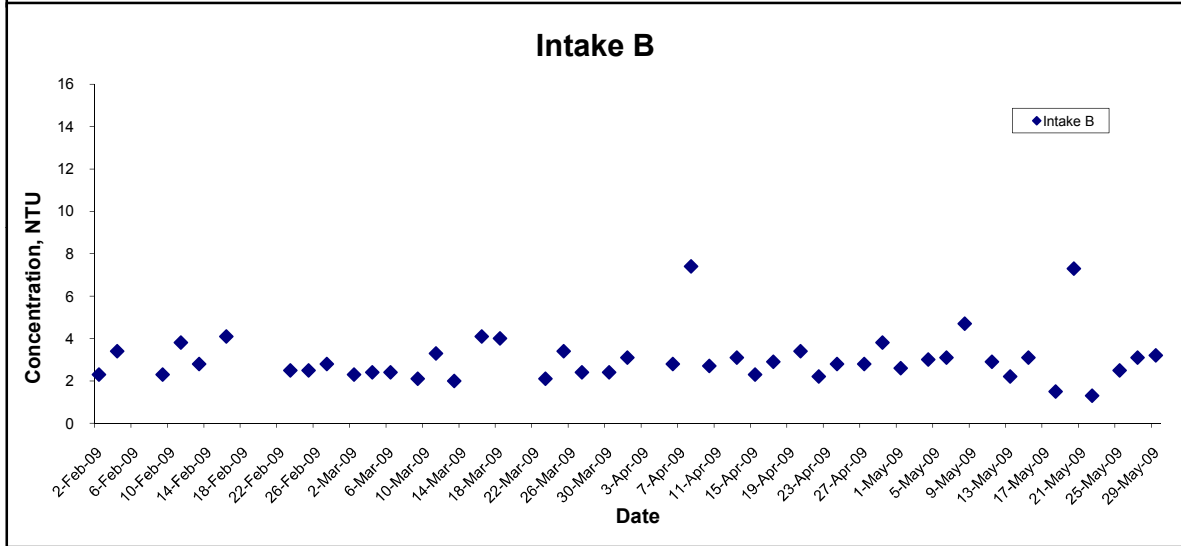
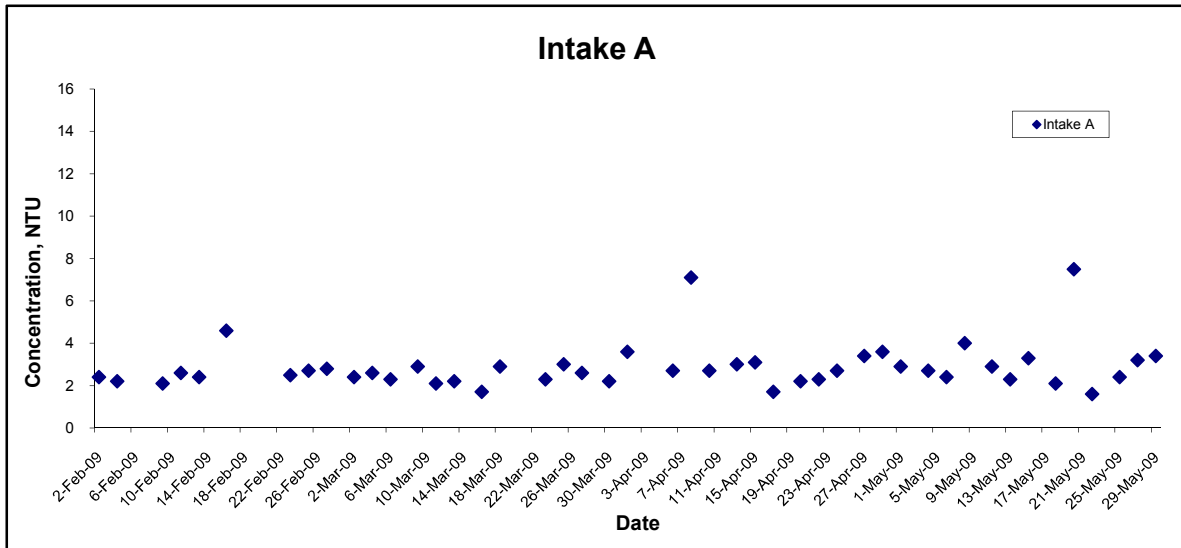
Title Contract No. DC/2007/10 Design and Construction of Hong Kong West Drainage Tunnel  Graphical Presentation of Water Quality Monitoring Results	Scale N.T.S	Project No. MA8001	
	Date May 09	Appendix H	

## Turbidity (Depth-averaged) at Mid-Ebb Tide



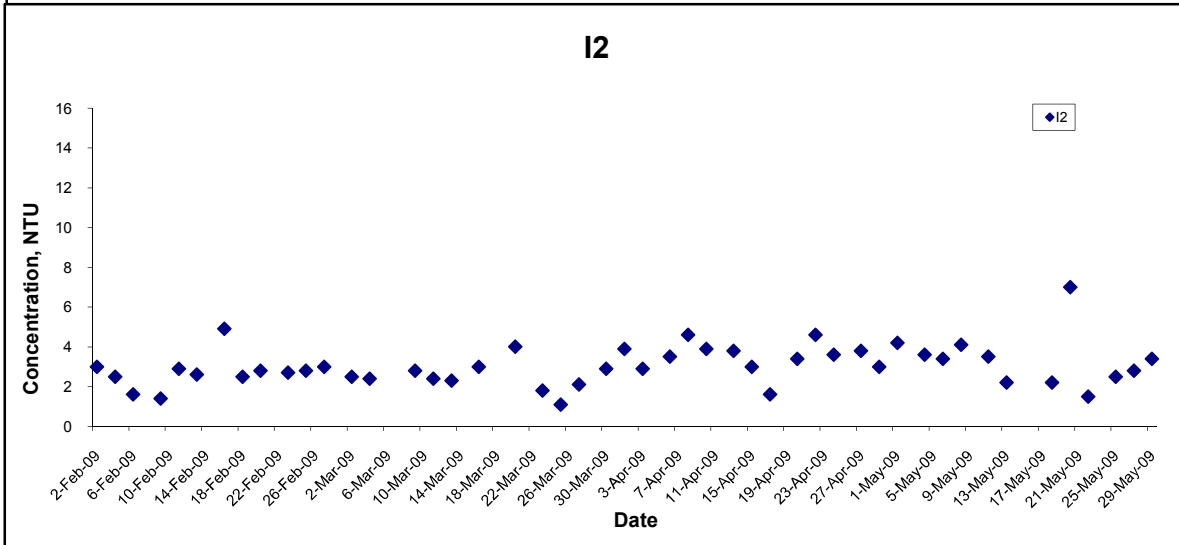
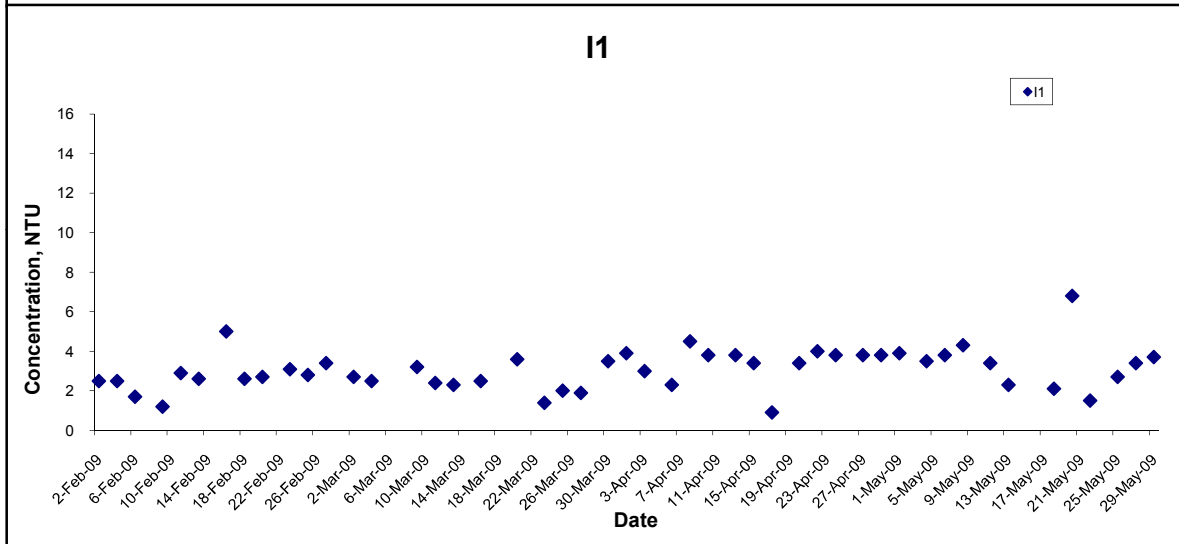
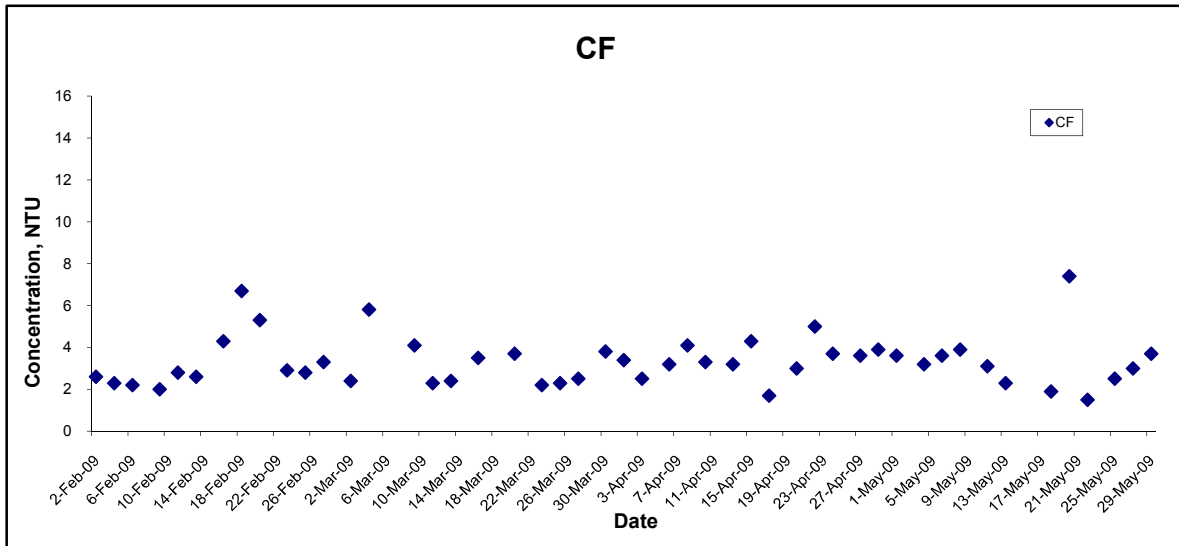
Title Contract No. DC/2007/10 Design and Construction of Hong Kong West Drainage Tunnel  Graphical Presentation of Water Quality Monitoring Results	Scale N.T.S	Project No. MA8001	CINOTECH
	Date May 09	Appendix H	

## Turbidity (Depth-averaged) at Mid-Ebb Tide



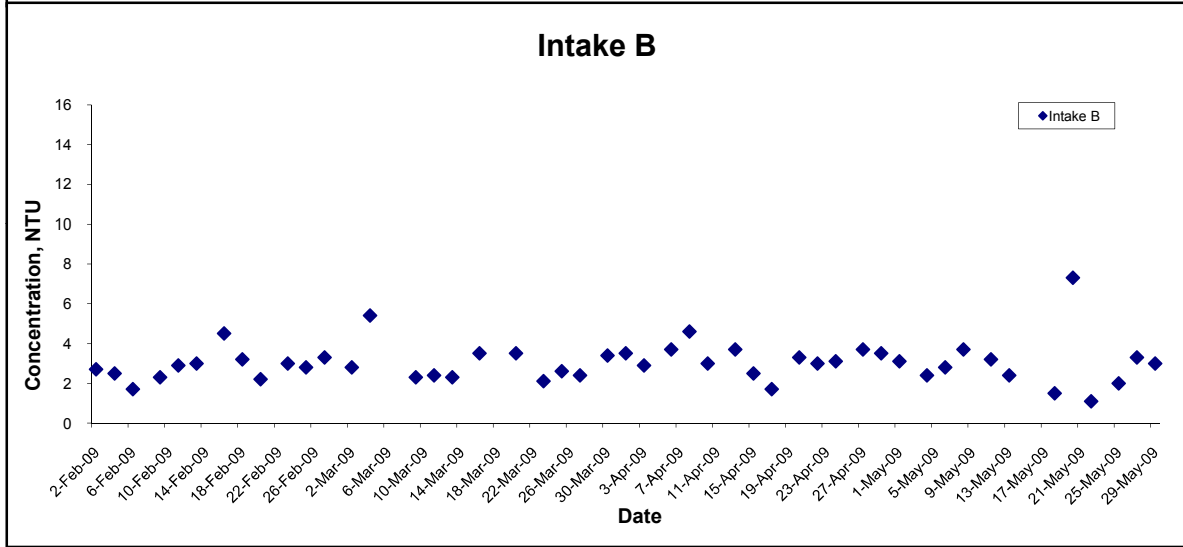
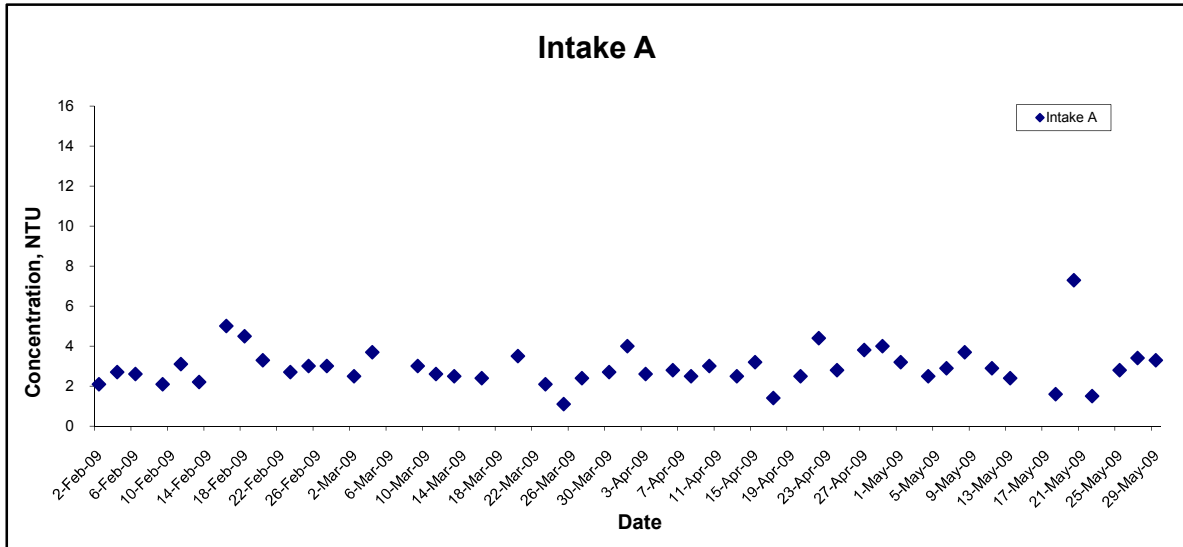
Title Contract No. DC/2007/10 Design and Construction of Hong Kong West Drainage Tunnel  Graphical Presentation of Water Quality Monitoring Results	Scale N.T.S	Project No. MA8001	
	Date May 09	Appendix H	

## Turbidity (Depth-averaged) at Mid-Flood Tide



Title Contract No. DC/2007/10 Design and Construction of Hong Kong West Drainage Tunnel  Graphical Presentation of Water Quality Monitoring Results	Scale N.T.S	Project No. MA8001	
	Date May 09	Appendix H	

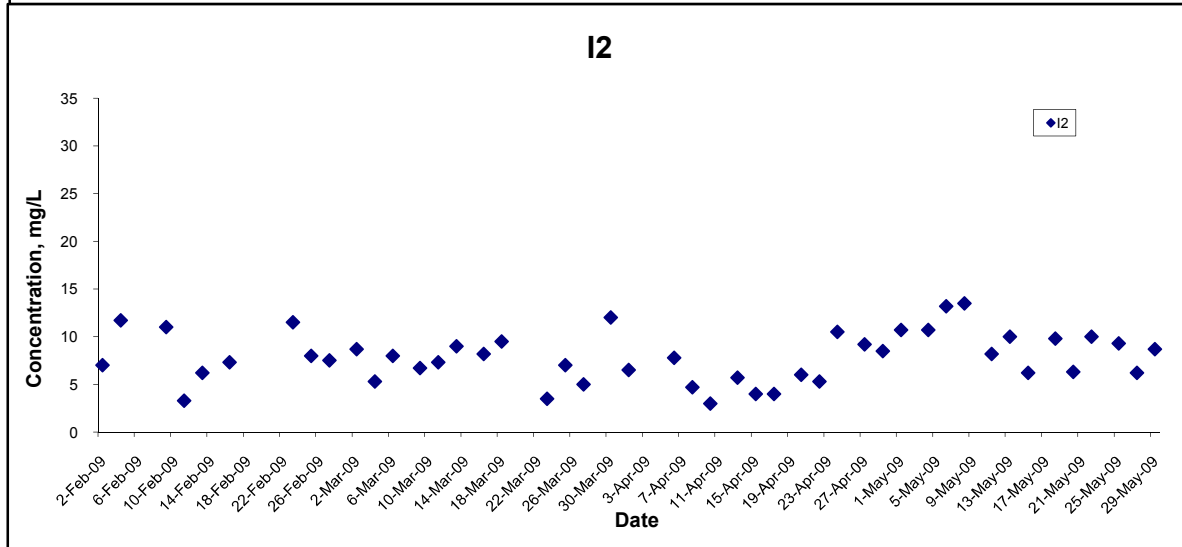
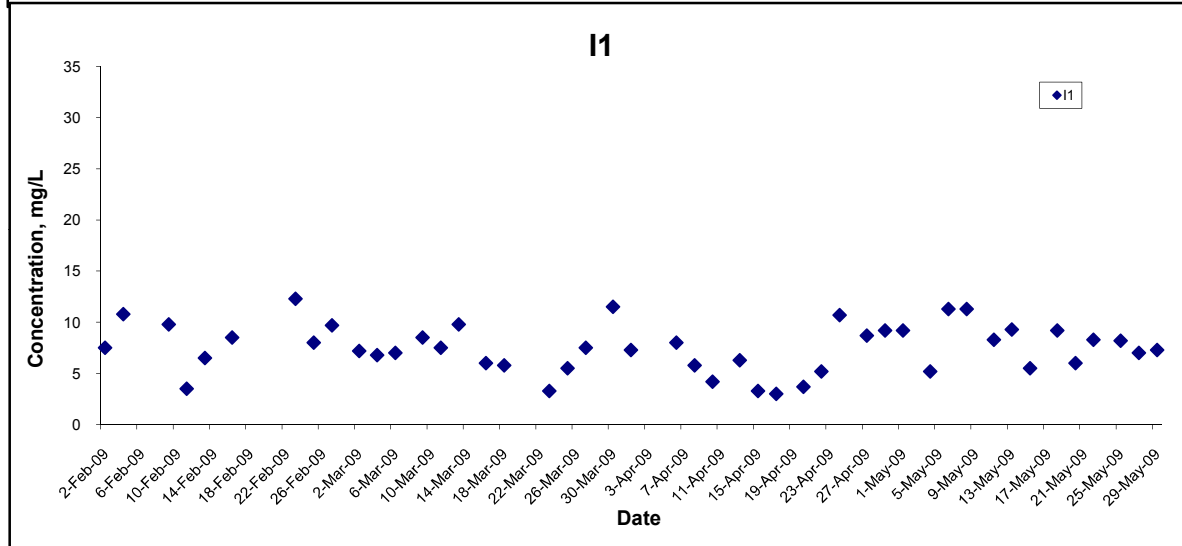
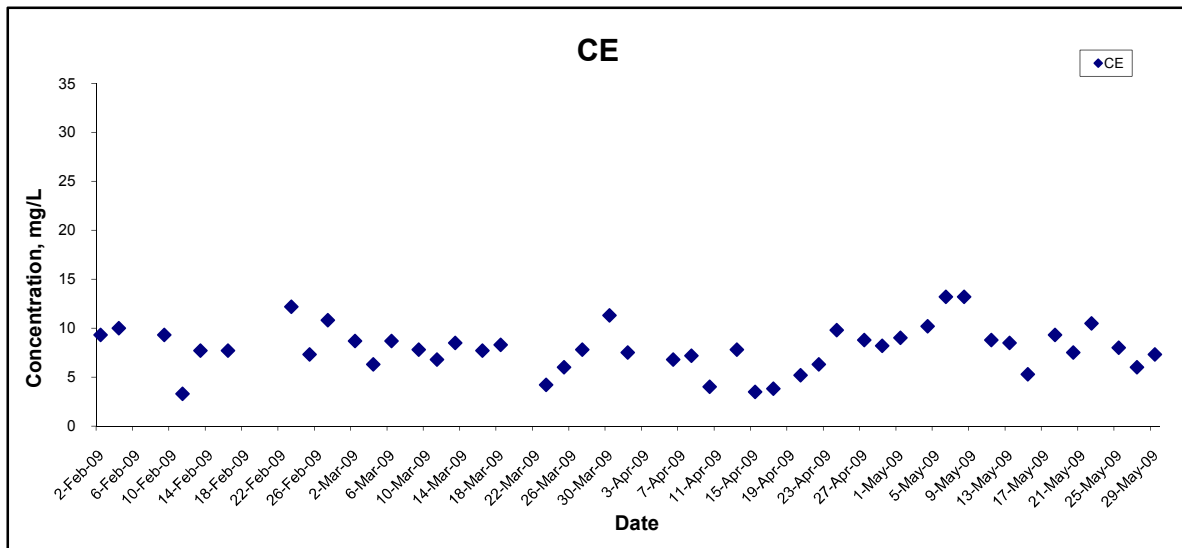
## Turbidity (Depth-averaged) at Mid-Flood Tide



Title Contract No. DC/2007/10 Design and Construction of Hong Kong West Drainage Tunnel  Graphical Presentation of Water Quality Monitoring Results	Scale N.T.S	Project No. MA8001	
	Date May 09	Appendix H	

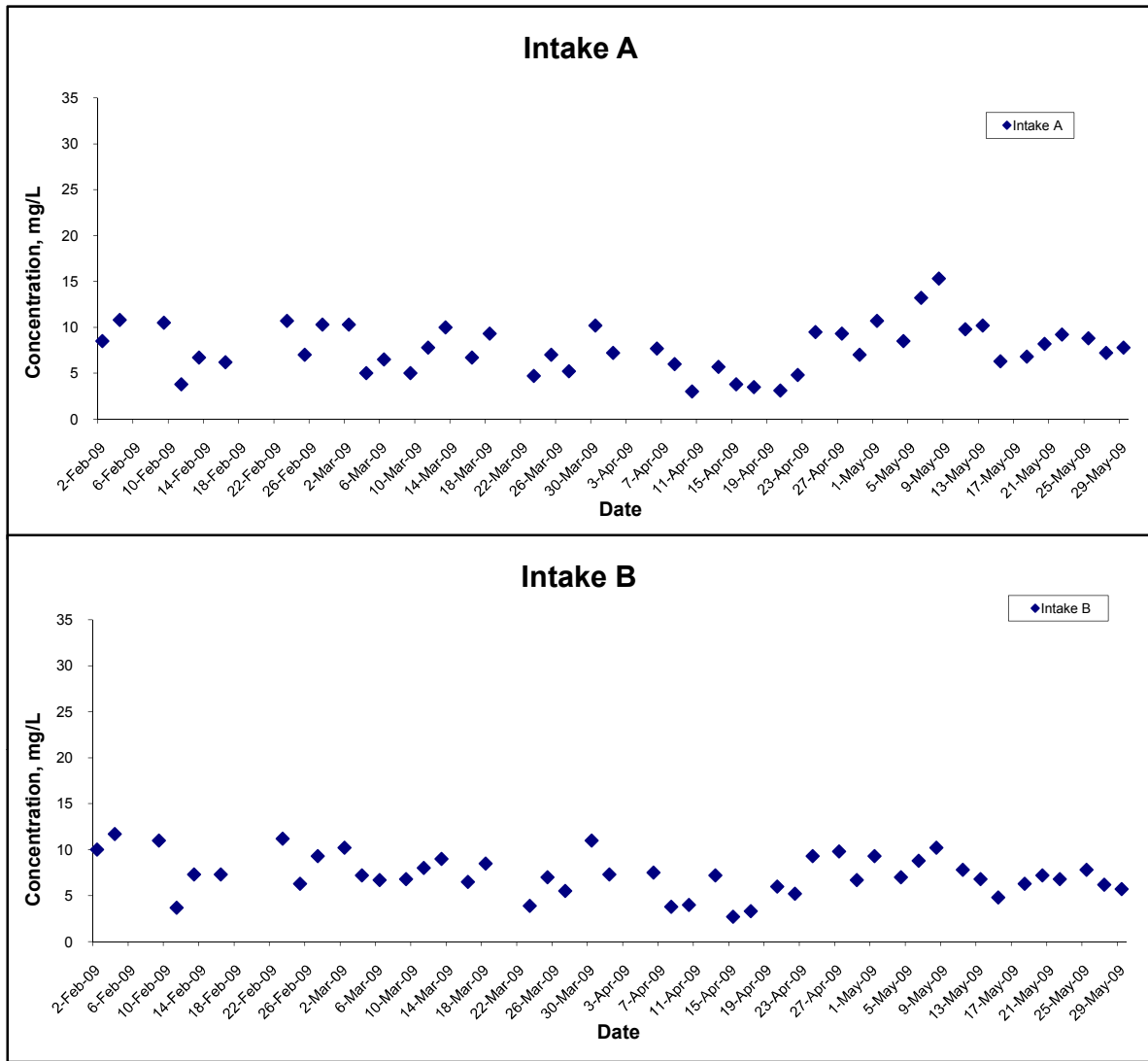


## Suspended Solids (Depth-averaged) at Mid-Ebb Tide



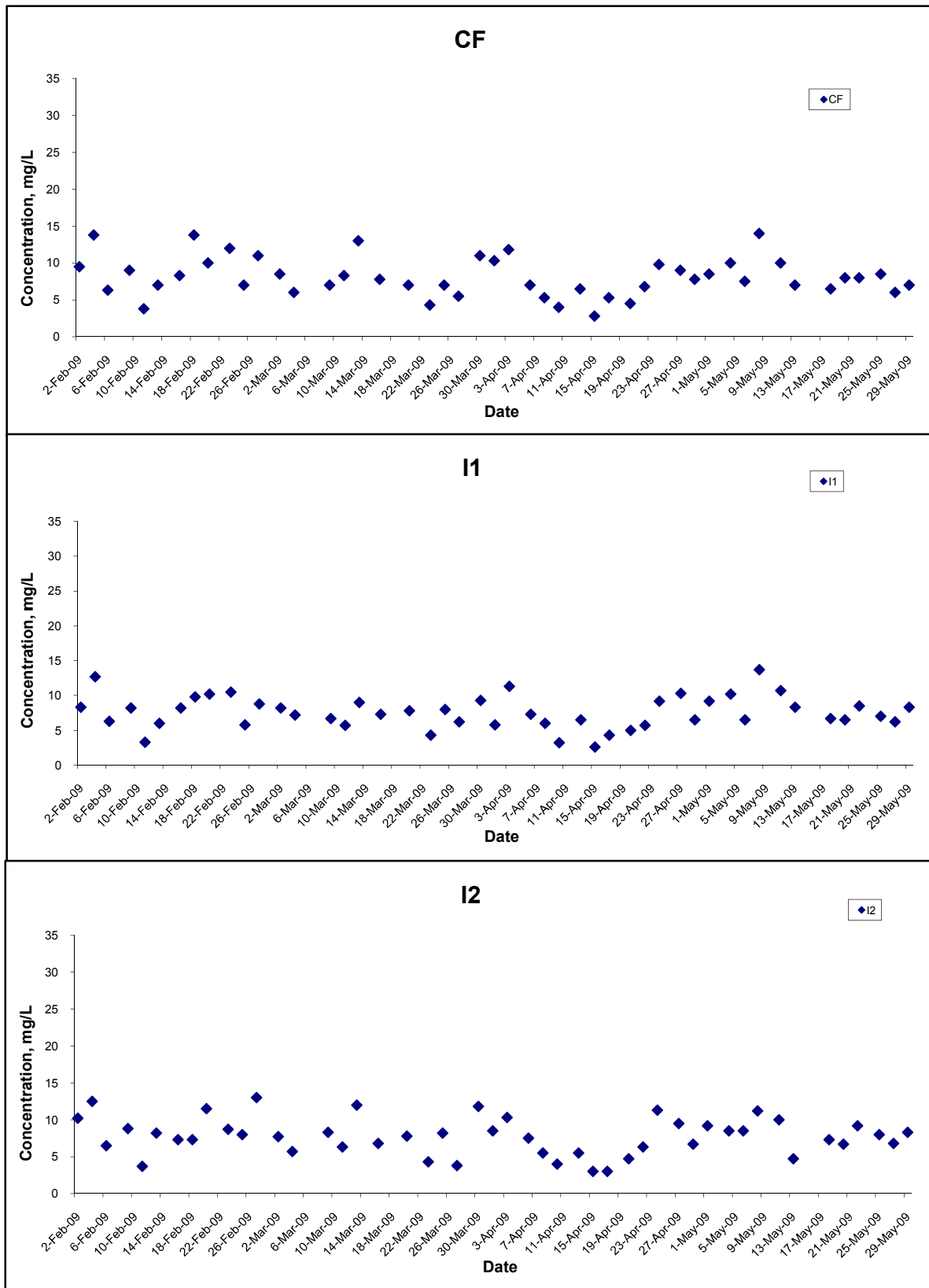
Title Contract No. DC/2007/10 Design and Construction of Hong Kong West Drainage Tunnel  Graphical Presentation of Water Quality Monitoring Results	Scale N.T.S	Project No. MA8001	
	Date May 09	Appendix H	

## Suspended Solids (Depth-averaged) at Mid-Ebb Tide



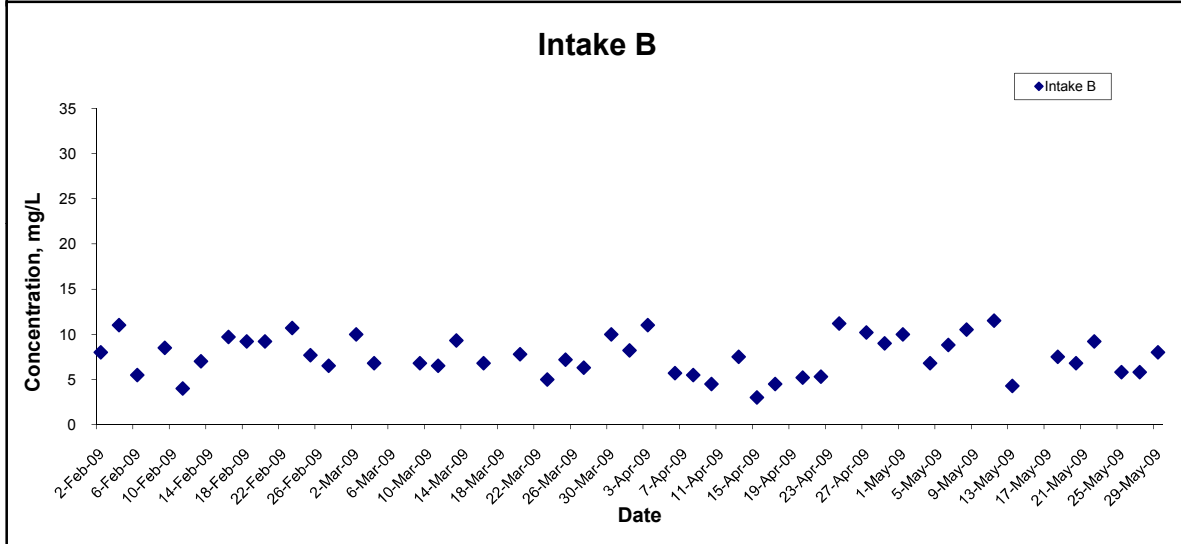
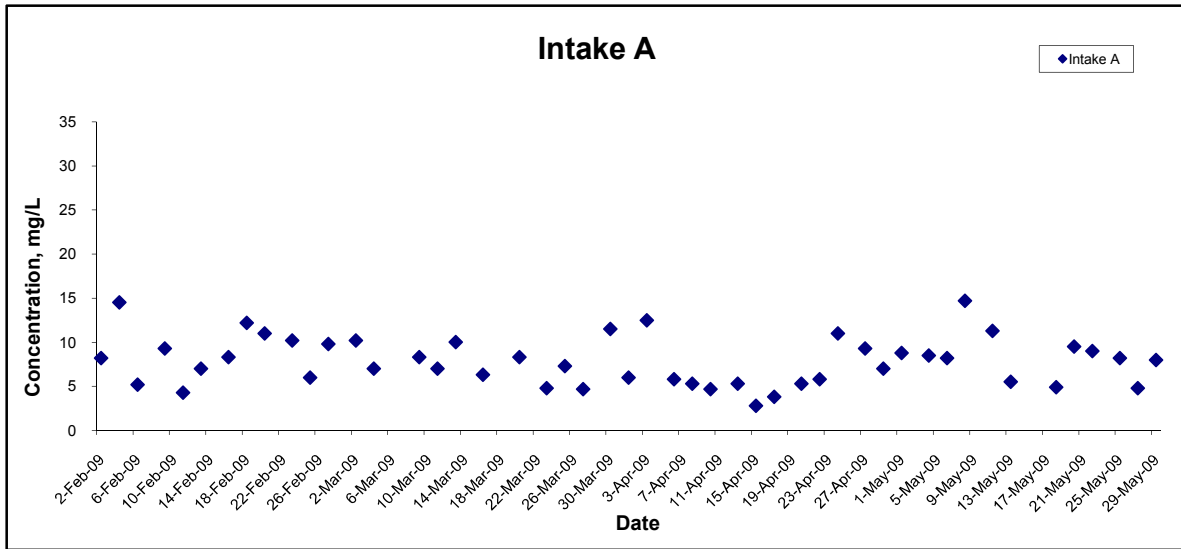
Title Contract No. DC/2007/10 Design and Construction of Hong Kong West Drainage Tunnel  Graphical Presentation of Water Quality Monitoring Results	Scale N.T.S	Project No. MA8001	CINOTECH
	Date May 09	Appendix H	

## Suspended Solids (Depth-averaged) at Mid-Flood Tide



Title Contract No. DC/2007/10 Design and Construction of Hong Kong West Drainage Tunnel  Graphical Presentation of Water Quality Monitoring Results	Scale N.T.S	Project No. MA8001	CINOTECH
	Date May 09	Appendix H	

## Suspended Solids (Depth-averaged) at Mid-Flood Tide



Title Contract No. DC/2007/10 Design and Construction of Hong Kong West Drainage Tunnel  Graphical Presentation of Water Quality Monitoring Results	Scale	N.T.S	Project No. MA8001	<b>CINOTECH</b>
	Date	May 09	Appendix H	