

## Water Quality Monitoring Results at CE - Mid-Ebb Tide

Date	Weather Condition	Sea Condition**	Sampling Time	Depth (m)		Water Temperature (°C)		pH		Salinity ppt		DO Saturation (%)		Dissolved Oxygen (mg/L)			Turbidity(NTU)			Suspended Solids (mg/L)		
						Value	Average	Value	Average	Value	Average	Value	Average	Value	Average	DA*	Value	Average	DA*	Value	Average	DA*
1-Jun-09	Sunny	Calm	09:24	Surface	1	25.1 25.1	25.1	7.9 7.7	7.8	35.9 36.0	36.0	97.4 97.4	97.4	7.1 7.1	7.1	7.1	2.6 2.4	2.5	2.9	8.0 8.0	8.0	10.5
				Middle	5.5	25.0 24.7	24.9	8.1 8.2	8.2	35.9 35.9	35.9	95.2 95.2	95.2	7.0 7.0	7.0		2.8 2.5	2.7		14.0 14.0	14.0	
				Bottom	10	24.5 24.4	24.5	7.8 8.0	7.9	36.0 36.0	36.0	92.9 92.9	92.9	6.9 6.9	6.9		3.3 3.4	3.4		9.0 10.0	9.5	
3-Jun-09	Cloudy	Calm	10:52	Surface	1	24.1 24.3	24.2	7.7 7.6	7.7	36.5 36.4	36.5	104.6 102.7	103.7	7.9 7.7	7.8	7.5	1.4 1.5	1.5	2.8	7.0 7.0	7.0	11.2
				Middle	5.5	24.5 24.5	24.5	7.9 7.8	7.9	36.9 36.9	36.9	95.8 94.7	95.3	7.2 7.1	7.2		2.6 2.5	2.6		11.0 11.0	11.0	
				Bottom	10	24.5 24.5	24.5	7.7 7.8	7.8	36.9 36.9	36.9	88.2 87.9	88.1	6.6 6.6	6.6		4.3 4.3	4.3		15.0 16.0	15.5	
5-Jun-09	Sunny	Calm	11:59	Surface	1	30.3 30.1	30.2	7.7 7.8	7.8	35.4 35.6	35.5	99.1 98.4	98.8	6.9 6.9	6.9	6.9	5.3 5.5	5.4	5.9	10.0 10.0	10.0	10.8
				Middle	5.5	29.9 29.8	29.9	7.8 7.9	7.9	35.3 35.2	35.3	96.3 96.4	96.4	6.7 6.8	6.8		5.7 5.5	5.6		13.0 13.0	13.0	
				Bottom	10	29.7 29.7	29.7	8.1 7.8	8.0	35.7 35.9	35.8	96.1 96.1	96.1	6.7 6.7	6.7		6.7 6.6	6.7		9.0 10.0	9.5	
8-Jun-09	Cloudy	Moderate	12:36	Surface	1	26.4 26.4	26.4	7.8 7.8	7.8	32.9 32.9	32.9	90.8 89.2	90.0	6.6 6.5	6.6	6.4	3.6 3.7	3.7	3.3	3.0 3.0	3.0	6.2
				Middle	5.5	26.4 26.4	26.4	8.0 8.0	8.0	36.2 36.0	36.1	85.2 85.2	85.2	6.2 6.2	6.2		3.2 3.2	3.2		6.0 6.0	6.0	
				Bottom	10	26.4 26.4	26.4	7.9 8.0	8.0	36.0 36.3	36.2	86.0 86.9	86.5	6.3 6.3	6.3		3.0 2.8	2.9		10.0 9.0	9.5	
10-Jun-09	Cloudy	Calm	14:08	Surface	1	28.7 28.7	28.7	7.8 7.8	7.8	32.1 32.1	32.1	93.8 93.1	93.5	6.6 6.6	6.6	6.5	5.0 5.0	5.0	5.2	6.0 6.0	6.0	6.7
				Middle	5.5	28.6 28.6	28.6	8.1 8.1	8.1	32.6 32.6	32.6	89.8 89.8	89.8	6.3 6.3	6.3		4.7 4.7	4.7		6.0 6.0	6.0	
				Bottom	10	28.6 28.5	28.6	7.8 7.9	7.9	33.0 33.1	33.1	86.4 85.8	86.1	6.2 6.2	6.2		6.1 5.9	6.0		8.0 8.0	8.0	
12-Jun-09	Cloudy	Calm	15:43	Surface	1	25.2 25.4	25.3	7.9 7.9	7.9	35.8 35.6	35.7	105.5 103.6	104.6	8.0 7.8	7.9	7.6	2.6 2.7	2.7	3.0	4.0 4.0	4.0	3.5
				Middle	5.5	25.6 25.6	25.6	8.0 8.1	8.1	36.1 36.1	36.1	96.8 95.7	96.3	7.3 7.2	7.3		2.8 2.7	2.8		3.0 3.0	3.0	
				Bottom	10	25.6 25.6	25.6	8.1 8.0	8.1	36.2 36.2	36.2	89.3 89.0	89.2	6.7 6.7	6.7		3.4 3.4	3.4		3.0 4.0	3.5	
15-Jun-09	Cloudy	Calm	16:28	Surface	1	26.5 26.5	26.5	7.8 7.6	7.7	35.0 34.7	34.9	88.8 88.8	88.8	6.4 6.3	6.4	6.4	3.4 3.2	3.3	2.9	9.0 9.0	9.0	9.5
				Middle	5.5	26.5 26.5	26.5	7.8 7.6	7.7	34.5 34.8	34.7	89.1 89.1	89.1	6.4 6.4	6.4		2.8 2.8	2.8		9.0 9.0	9.0	
				Bottom	10	26.4 26.4	26.4	7.4 7.4	7.4	34.8 34.4	34.6	88.8 88.6	88.7	6.3 6.3	6.3		2.6 2.3	2.5		11.0 10.0	10.5	
17-Jun-09	Sunny	Calm	08:27	Surface	1	28.2 28.2	28.2	7.9 7.6	7.8	37.8 36.6	37.2	90.9 90.9	90.9	6.7 6.7	6.7	6.5	3.7 3.9	3.8	3.6	8.0 8.0	8.0	11.5
				Middle	5.5	28.1 28.1	28.1	8.2 8.2	8.2	38.0 37.8	37.9	89.5 89.5	89.5	6.2 6.2	6.2		3.9 3.6	3.8		11.0 11.0	11.0	
				Bottom	10	28.1 28.1	28.1	7.6 7.9	7.8	37.0 35.5	36.3	89.5 89.5	89.5	6.2 6.2	6.2		3.2 3.3	3.3		16.0 15.0	15.5	
19-Jun-09	Cloudy	Calm	09:44	Surface	1	28.3 28.2	28.3	7.7 7.7	7.7	37.5 37.6	37.6	91.5 91.6	91.6	6.3 6.3	6.3	6.4	4.5 4.7	4.6	3.8	7.0 7.0	7.0	6.7
				Middle	5.5	28.3 28.2	28.3	7.8 7.8	7.8	37.3 37.3	37.3	92.0 91.9	92.0	6.4 6.4	6.4		4.0 3.4	3.7		6.0 6.0	6.0	
				Bottom	10	28.2 28.3	28.3	7.8 7.8	7.8	36.2 37.4	36.8	91.1 91.1	91.1	6.3 6.3	6.3		3.1 3.0	3.1		7.0 7.0	7.0	

Remarks: \* DA: Depth-Averaged

\*\* Calm: Small or no wave; Moderate: Between calm and rough; Rough : White capped or rougher

## Water Quality Monitoring Results at CE - Mid-Ebb Tide

Date	Weather Condition	Sea Condition**	Sampling Time	Depth (m)		Water Temperature (°C)		pH		Salinity ppt		DO Saturation (%)		Dissolved Oxygen (mg/L)			Turbidity(NTU)			Suspended Solids (mg/L)				
						Value	Average	Value	Average	Value	Average	Value	Average	Value	Average	DA*	Value	Average	DA*	Value	Average	DA*		
22-Jun-09	Cloudy	Calm	11:58	Surface	1	27.9	27.9	7.9	7.9	33.8	33.2	92.4	91.1	6.8	6.8	6.6	3.2	3.3	3.1	11.0	11.0	11.0		
						27.9		7.9		32.6		89.8		6.7										
				Middle	5.5	28.1	28.1	8.0	8.0	33.8	33.8	85.5	85.5	6.3	6.3	2.7	2.7	11.0		11.0				
		28.0		8.0		33.8		85.5		6.3														
		28.0	28.0	8.0	8.0	33.8	33.8	83.1	83.1	6.2	6.2	6.2	6.2	3.1	3.2	11.0	11.0							
		28.0		8.0		33.8		83.0		6.2														
24-Jun-09	Cloudy	Calm	13:49	Surface	1	29.1	29.1	7.9	7.9	36.2	36.2	85.3	85.4	6.5	6.5	6.5	2.7	2.5	2.8	6.0	6.0	5.5		
						29.0		7.8		36.2		85.4		6.5										
				Middle	5.5	29.0	29.1	7.8	7.7	32.7	32.8	85.7	85.9	6.5	6.5	2.6	2.4	5.0		5.0				
		29.1		7.6		32.9		86.1		6.5														
		29.1	29.1	7.6	7.6	35.7	36.2	87.1	87.1	6.5	6.6	6.6	6.6	3.3	3.4	5.0	5.5							
		29.1		7.6		36.6		87.0		6.6														
26-Jun-09	Rainy	Calm	15:33	Surface	1	25.7	25.7	7.8	7.8	35.5	34.7	87.6	88.0	6.4	6.4	6.5	2.7	2.7	3.7	5.0	5.5	6.8		
						25.7		7.8		33.9		88.4		6.4										
				Middle	5.5	25.7	25.7	8.0	8.1	33.1	33.5	90.5	90.6	6.6	6.6	3.7	3.8	6.0		6.0				
		25.7		8.1		33.9		90.6		6.5														
		25.7	25.7	7.9	7.9	36.0	36.0	89.9	88.7	6.5	6.4	6.4	6.4	4.4	4.5	9.0	9.0							
		25.7		7.9		35.9		87.4		6.3														
29-Jun-09	Cloudy	Calm	16:56	Surface	1	26.8	26.8	8.3	8.2	36.0	35.6	90.8	90.3	6.6	6.6	6.6	2.8	2.8	3.2	10.0	10.0	10.0		
						26.7		8.1		35.2		89.8		6.5										
				Middle	5.5	26.6	26.6	8.1	8.0	35.3	35.8	89.8	89.8	6.6	6.6	3.4	3.4	10.0		10.0				
		26.6		7.9		36.3		89.8		6.6														
		26.6	26.6	7.9	7.9	36.4	36.4	89.4	89.5	6.5	6.6	6.6	6.6	3.6	3.5	10.0	10.0							
		26.6		7.8		36.3		89.5		6.6														

Remarks: \* DA: Depth-Averaged

\*\* Calm: Small or no wave; Moderate: Between calm and rough; Rough : White capped or rougher

## Water Quality Monitoring Results at CF - Mid-Flood Tide

Date	Weather Condition	Sea Condition**	Sampling Time	Depth (m)		Water Temperature (°C)		pH		Salinity ppt		DO Saturation (%)		Dissolved Oxygen (mg/L)			Turbidity (NTU)			Suspended Solids (mg/L)					
						Value	Average	Value	Average	Value	Average	Value	Average	Value	Average	DA*	Value	Average	DA*	Value	Average	DA*			
1-Jun-09	Sunny	Calm	13:09	Surface	1	26.3 26.1	26.2	7.9 8.0	8.0	35.9 35.9	35.9	95.1 95.8	95.5	7.0 7.1	7.1	7.1	2.5 2.5	2.5	2.7	10.0 10.0	10.0	9.0			
				Middle	-	-	-	-	-	-	-	-	-	-	-		-	-		-	-		-	-	-
				Bottom	3	26.1 26.1	26.1	8.2 8.0	8.1	35.9 35.9	35.9	95.8 96.9	96.4	7.1 7.1	7.1		7.1	2.8 2.9		2.9	8.0 8.0		8.0		
3-Jun-09	Cloudy	Calm	16:03	Surface	1	26.3 26.3	26.3	7.7 7.8	7.8	35.4 35.5	35.5	98.2 98.2	98.2	7.4 7.4	7.4	7.4	3.8 3.9	3.9	3.9	10.0 10.0	10.0	12.0			
				Middle	-	-	-	-	-	-	-	-	-	-	-		-	-		-	-		-	-	-
				Bottom	3	26.3 26.3	26.3	8.0 7.9	8.0	36.1 36.1	36.1	89.7 88.8	89.3	6.7 6.7	6.7		6.7	3.8 3.8		3.8	14.0 14.0		14.0		
5-Jun-09	Fine	Calm	17:15	Surface	1	30.3 30.3	30.3	7.9 7.9	7.9	35.8 35.8	35.8	105.7 105.6	105.7	7.3 7.3	7.3	7.3	5.6 5.6	5.6	5.7	6.0 6.0	6.0	11.0			
				Middle	-	-	-	-	-	-	-	-	-	-	-		-	-		-	-		-	-	
				Bottom	3	30.1 30.0	30.1	7.8 8.3	8.1	35.3 35.3	35.3	105.7 105.3	105.5	7.4 7.4	7.4		7.4	5.6 5.7		5.7	16.0 16.0		16.0		
8-Jun-09	Cloudy	Moderate	16:41	Surface	1	24.7 24.8	24.8	7.8 8.0	7.9	34.7 34.7	34.7	92.0 90.7	91.4	6.7 6.6	6.7	6.7	2.6 2.6	2.6	2.9	5.0 5.0	5.0	6.2			
				Middle	-	-	-	-	-	-	-	-	-	-	-		-	-		-	-		-	-	
				Bottom	3	24.7 24.8	24.8	8.2 8.2	8.2	32.4 34.6	33.5	92.6 92.5	92.6	6.7 6.7	6.7		6.7	3.1 3.1		3.1	8.0 8.0		8.0		
10-Jun-09	Cloudy	Calm	08:30	Surface	1	29.1 29.1	29.1	7.9 8.1	8.0	31.7 31.7	31.7	93.4 93.4	93.4	6.5 6.5	6.5	6.5	5.2 5.2	5.2	5.2	7.0 7.0	7.0	7.5			
				Middle	-	-	-	-	-	-	-	-	-	-	-		-	-		-	-		-	-	
				Bottom	3	28.8 28.8	28.8	8.1 8.1	8.1	33.1 33.2	33.2	89.4 87.1	88.3	6.3 6.1	6.2		6.2	5.1 5.1		5.1	8.0 8.0		8.0		
12-Jun-09	Cloudy	Calm	08:55	Surface	1	26.3 26.3	26.3	7.9 8.0	8.0	34.7 34.7	34.7	99.2 99.2	99.2	7.5 7.5	7.5	7.5	4.6 4.5	4.6	4.6	3.0 4.0	3.5	3.8			
				Middle	-	-	-	-	-	-	-	-	-	-	-		-	-		-	-		-	-	
				Bottom	3	26.3 26.3	26.3	8.1 8.2	8.2	35.4 35.4	35.4	90.8 89.9	90.4	6.9 6.8	6.9		6.9	4.5 4.4		4.5	4.0 4.0		4.0		
15-Jun-09	Cloudy	Calm	10:10	Surface	1	27.4 27.4	27.4	7.3 7.8	7.6	34.5 34.0	34.3	98.9 98.8	98.9	7.0 7.0	7.0	7.0	3.6 3.7	3.7	3.2	11.0 11.0	11.0	11.0			
				Middle	-	-	-	-	-	-	-	-	-	-	-		-	-		-	-		-	-	
				Bottom	3	27.5 27.4	27.5	8.1 7.8	8.0	34.5 32.8	33.7	98.9 98.9	98.9	7.1 7.0	7.1		7.1	2.8 2.5		2.7	11.0 11.0		11.0		
17-Jun-09	Sunny	Calm	13:18	Surface	1	29.8 29.7	29.8	7.6 8.1	7.9	38.2 38.4	38.3	100.8 99.4	100.1	7.4 7.3	7.4	7.4	3.8 3.6	3.7	3.7	6.0 6.0	6.0	9.0			
				Middle	-	-	-	-	-	-	-	-	-	-	-		-	-		-	-		-	-	
				Bottom	3	29.6 29.6	29.6	8.4 8.1	8.3	38.3 38.3	38.3	94.6 94.6	94.6	6.9 6.9	6.9		6.9	3.6 3.6		3.6	12.0 12.0		12.0		
19-Jun-09	Cloudy	Calm	16:09	Surface	1	29.0 29.1	29.1	7.6 7.9	7.8	36.4 36.4	36.4	91.8 91.7	91.8	6.4 6.4	6.4	6.4	3.7 3.6	3.7	4.0	5.0 5.0	5.0	5.0			
				Middle	-	-	-	-	-	-	-	-	-	-	-		-	-		-	-		-	-	
				Bottom	3	28.9 29.0	29.0	8.1 8.1	8.1	37.2 37.0	37.1	91.7 91.8	91.8	6.4 6.4	6.4		6.4	4.3 4.3		4.3	5.0 5.0		5.0		

Remarks: \* DA: Depth-Averaged

\*\* Calm: Small or no wave; Moderate: Between calm and rough; Rough: White capped or rougher

## Water Quality Monitoring Results at CF - Mid-Flood Tide

Date	Weather Condition	Sea Condition**	Sampling Time	Depth (m)		Water Temperature (°C)		pH		Salinity ppt		DO Saturation (%)		Dissolved Oxygen (mg/L)			Turbidity(NTU)			Suspended Solids (mg/L)					
						Value	Average	Value	Average	Value	Average	Value	Average	Value	Average	DA*	Value	Average	DA*	Value	Average	DA*			
22-Jun-09	Cloudy	Calm	16:41	Surface	1	28.3 28.3	28.3	7.8 8.0	7.9	33.3 33.4	33.4	99.9 98.5	99.2	7.3 7.2	7.3	7.3	2.1 2.3	2.2	2.8	14.0 13.0	13.5	11.3			
				Middle	-	-	-	-	-	-	-	-	-	-	-		-	-		-	-		-	-	-
				Bottom	3	28.0 28.0	28.0	8.1 8.0	8.1	31.5 33.5	32.5	95.6 95.5	95.6	7.0 7.0	7.0		7.0	3.4 3.3		3.4	3.4		3.4	9.0 9.0	9.0
24-Jun-09	Cloudy	Calm	08:41	Surface	1	28.4 28.4	28.4	7.6 7.8	7.7	36.0 36.6	36.3	99.3 97.9	98.6	7.4 7.3	7.4	7.4	3.6 3.7	3.7	3.5	5.0 5.0	5.0	5.8			
				Middle	-	-	-	-	-	-	-	-	-	-	-		-	-		-	-		-	-	-
				Bottom	3	28.3 28.3	28.3	8.1 7.9	8.0	36.7 37.1	36.9	93.4 93.3	93.4	7.0 7.0	7.0		7.0	3.1 3.2		3.2	3.2		3.2	6.0 7.0	6.5
26-Jun-09	Rainy	Calm	08:34	Surface	1	26.3 26.3	26.3	7.8 8.0	7.9	34.7 34.7	34.7	97.1 97.0	97.1	7.0 7.0	7.0	7.0	3.6 3.8	3.7	4.0	8.0 8.0	8.0	7.0			
				Middle	-	-	-	-	-	-	-	-	-	-	-		-	-		-	-		-	-	-
				Bottom	3	26.3 26.3	26.3	8.1 8.2	8.2	34.5 33.4	34.0	97.1 97.1	97.1	7.0 7.0	7.0		7.0	4.2 4.3		4.3	4.3		4.3	6.0 6.0	6.0
29-Jun-09	Cloudy	Calm	11:26	Surface	1	26.6 26.6	26.6	7.7 8.2	8.0	35.7 33.9	34.8	101.1 100.3	100.7	7.4 7.4	7.4	7.4	3.1 3.2	3.2	3.5	10.0 10.0	10.0	9.8			
				Middle	-	-	-	-	-	-	-	-	-	-	-		-	-		-	-		-	-	-
				Bottom	3	26.6 26.6	26.6	8.4 8.1	8.3	33.8 35.0	34.4	99.1 99.0	99.1	7.3 7.2	7.3		7.3	3.7 3.6		3.7	3.7		3.7	9.0 10.0	9.5

Remarks: \* DA: Depth-Averaged

\*\* Calm: Small or no wave; Moderate: Between calm and rough; Rough : White capped or rougher

## Water Quality Monitoring Results at I1 - Mid-Ebb Tide

Date	Weather Condition	Sea Condition**	Sampling Time	Depth (m)		Water Temperature (°C)		pH		Salinity ppt		DO Saturation (%)		Dissolved Oxygen (mg/L)			Turbidity (NTU)			Suspended Solids (mg/L)		
						Value	Average	Value	Average	Value	Average	Value	Average	Value	Average	DA*	Value	Average	DA*	Value	Average	DA*
1-Jun-09	Sunny	Calm	09:04	Surface	1	24.7 24.7	24.7	7.9 8.0	8.0	35.9 36.0	36.0	86.8 86.8	86.8	6.4 6.4	6.4	6.4	2.1 1.9	2.0	2.3	9.0 9.0	9.0	8.8
				Middle	4.5	24.3 24.3	24.3	7.9 7.9	7.9	36.0 36.0	36.0	87.5 86.0	86.8	6.5 6.3	6.4		2.1 2.0	2.1		10.0 10.0	10.0	
				Bottom	8	24.2 24.2	24.2	8.1 8.0	8.1	36.1 36.0	36.1	85.6 85.6	85.6	6.3 6.3	6.3		2.7 2.8	2.8		7.0 8.0	7.5	
3-Jun-09	Cloudy	Calm	10:30	Surface	1	24.3 24.4	24.4	7.7 7.8	7.8	36.4 36.4	36.4	97.6 98.0	97.8	7.3 7.3	7.3	7.1	2.2 2.2	2.2	3.3	7.0 7.0	7.0	7.0
				Middle	4.5	24.5 24.5	24.5	7.8 7.7	7.8	36.8 36.8	36.8	92.3 92.0	92.2	6.9 6.9	6.9		3.9 3.8	3.9		5.0 9.0	7.0	
				Bottom	8	24.5 24.5	24.5	7.9 7.8	7.9	36.9 36.9	36.9	87.5 87.5	87.5	6.6 6.6	6.6		3.8 3.7	3.8		7.0 7.0	7.0	
5-Jun-09	Sunny	Calm	11:37	Surface	1	30.9 30.9	30.9	8.4 7.8	8.1	35.0 35.1	35.1	96.6 98.0	97.3	6.6 6.7	6.7	6.8	5.0 5.1	5.1	5.7	9.0 9.0	9.0	7.5
				Middle	4.5	30.3 30.3	30.3	8.2 8.4	8.3	35.3 35.4	35.4	97.5 97.2	97.4	6.8 6.7	6.8		5.7 5.9	5.8		7.0 7.0	7.0	
				Bottom	8	30.2 30.2	30.2	8.1 7.8	8.0	35.5 35.5	35.5	95.6 95.5	95.6	6.6 6.6	6.6		6.3 6.2	6.3		7.0 6.0	6.5	
8-Jun-09	Cloudy	Moderate	12:47	Surface	1	26.5 26.5	26.5	7.9 7.8	7.9	36.1 34.1	35.1	86.8 86.9	86.9	6.5 6.4	6.5	6.5	4.1 3.8	4.0	3.7	3.0 3.0	3.0	3.5
				Middle	4.5	26.4 26.4	26.4	7.9 7.9	7.9	36.0 36.1	36.1	87.2 87.6	87.4	6.5 6.5	6.5		3.8 3.6	3.7		3.0 3.0	3.0	
				Bottom	8	26.4 26.3	26.4	7.9 7.9	7.9	36.0 36.4	36.2	85.6 85.5	85.6	6.2 6.3	6.3		3.1 3.4	3.3		4.0 5.0	4.5	
10-Jun-09	Cloudy	Calm	13:48	Surface	1	28.8 28.8	28.8	7.9 8.0	8.0	31.9 31.9	31.9	89.8 89.3	89.6	6.4 6.4	6.4	6.4	4.5 4.4	4.5	4.5	4.0 5.0	4.5	7.8
				Middle	4.5	28.7 28.7	28.7	7.8 7.9	7.9	32.3 32.3	32.3	89.2 89.3	89.3	6.4 6.4	6.4		4.4 4.5	4.5		8.0 8.0	8.0	
				Bottom	8	27.7 27.7	27.7	8.1 7.9	8.0	36.8 36.8	36.8	84.5 84.5	84.5	6.2 6.2	6.2		4.4 4.3	4.4		11.0 11.0	11.0	
12-Jun-09	Cloudy	Calm	15:10	Surface	1	25.4 25.5	25.5	8.1 7.9	8.0	35.6 35.6	35.6	98.6 99.0	98.8	7.4 7.4	7.4	7.2	3.1 3.1	3.1	3.5	4.0 4.0	4.0	3.8
				Middle	4.5	25.7 25.7	25.7	8.1 8.1	8.1	36.0 36.0	36.0	93.3 93.0	93.2	7.0 7.0	7.0		3.4 3.5	3.5		3.0 4.0	3.5	
				Bottom	8	25.7 25.7	25.7	8.1 8.0	8.1	36.1 36.1	36.1	88.6 88.6	88.6	6.7 6.7	6.7		3.9 4.0	4.0		4.0 4.0	4.0	
15-Jun-09	Cloudy	Calm	16:39	Surface	1	26.5 26.4	26.5	7.7 7.3	7.5	34.8 34.7	34.8	90.9 90.9	90.9	6.5 6.5	6.5	6.5	3.0 3.1	3.1	2.7	12.0 11.0	11.5	10.2
				Middle	4.5	26.4 26.4	26.4	7.7 7.8	7.8	35.0 34.9	35.0	90.8 90.3	90.6	6.5 6.4	6.5		2.6 2.6	2.6		9.0 9.0	9.0	
				Bottom	8	26.4 26.3	26.4	7.4 7.7	7.6	34.9 32.4	33.7	89.5 89.3	89.4	6.4 6.4	6.4		2.4 2.3	2.4		10.0 10.0	10.0	
17-Jun-09	Sunny	Calm	08:36	Surface	1	28.2 28.2	28.2	8.1 7.8	8.0	34.5 36.5	35.5	87.0 87.0	87.0	6.4 6.4	6.4	6.5	4.6 4.3	4.5	4.1	4.0 5.0	4.5	8.8
				Middle	4.5	28.2 28.2	28.2	8.1 7.8	8.0	36.5 37.6	37.1	87.4 87.4	87.4	6.5 6.5	6.5		3.6 3.7	3.7		8.0 8.0	8.0	
				Bottom	8	28.2 28.2	28.2	7.9 7.9	7.9	38.0 35.6	36.8	87.4 87.4	87.4	6.5 6.5	6.5		3.9 4.1	4.0		14.0 14.0	14.0	
19-Jun-09	Cloudy	Calm	09:54	Surface	1	28.2 28.2	28.2	8.0 7.7	7.9	36.7 37.0	36.9	92.3 92.4	92.4	6.4 6.4	6.4	6.5	4.7 4.3	4.5	4.3	6.0 6.0	6.0	7.2
				Middle	4.5	28.2 28.1	28.2	8.0 7.9	8.0	37.6 38.0	37.8	92.7 92.2	92.5	6.5 6.4	6.5		4.3 4.5	4.4		7.0 7.0	7.0	
				Bottom	8	28.2 28.2	28.2	7.9 7.8	7.9	37.2 37.9	37.6	91.6 91.6	91.6	6.4 6.4	6.4		4.1 3.8	4.0		9.0 8.0	8.5	

Remarks: \* DA: Depth-Averaged

\*\* Calm: Small or no wave; Moderate: Between calm and rough; Rough: White capped or rougher

## Water Quality Monitoring Results at I1 - Mid-Ebb Tide

Date	Weather Condition	Sea Condition**	Sampling Time	Depth (m)		Water Temperature (°C)		pH		Salinity ppt		DO Saturation (%)		Dissolved Oxygen (mg/L)			Turbidity (NTU)			Suspended Solids (mg/L)		
						Value	Average	Value	Average	Value	Average	Value	Average	Value	Average	DA*	Value	Average	DA*	Value	Average	DA*
22-Jun-09	Cloudy	Calm	12:09	Surface	1	28.0 28.1	28.1	7.8 7.8	7.8	30.8 33.9	32.4	91.7 91.5	91.6	6.9 6.8	6.9	6.7	3.2 3.3	3.3	3.4	11.0 11.0	11.0	9.8
				Middle	4.5	28.0 27.9	28.0	7.8 7.8	7.8	33.9 32.9	33.4	86.6 85.3	86.0	6.4 6.3	6.4		3.6 3.4	3.5		9.0 10.0	9.5	
				Bottom	8	28.0 28.0	28.0	7.8 7.8	7.8	34.0 32.1	33.1	84.7 84.9	84.8	6.3 6.3	6.3		3.7 3.2	3.5		9.0 9.0	9.0	
24-Jun-09	Cloudy	Calm	14:02	Surface	1	28.9 29.0	29.0	7.7 7.4	7.6	33.6 35.3	34.5	87.1 86.8	87.0	6.6 6.6	6.6	6.6	2.6 2.7	2.7	3.2	4.0 4.0	4.0	4.2
				Middle	4.5	28.9 28.9	28.9	7.9 7.8	7.9	35.7 36.1	35.9	86.1 86.1	86.1	6.5 6.5	6.5		4.1 4.5	4.3		4.0 4.0	4.0	
				Bottom	8	28.9 28.9	28.9	7.5 7.8	7.7	36.7 34.1	35.4	86.9 87.2	87.1	6.5 6.6	6.6		2.7 2.6	2.7		4.0 5.0	4.5	
26-Jun-09	Rainy	Calm	15:48	Surface	1	25.7 25.8	25.8	8.1 7.9	8.0	33.7 33.2	33.5	87.9 88.2	88.1	6.4 6.4	6.4	6.5	2.3 2.4	2.4	3.6	5.0 5.0	5.0	5.0
				Middle	4.5	25.7 25.7	25.7	7.9 8.0	8.0	34.1 34.8	34.5	88.4 88.2	88.3	6.4 6.5	6.5		4.4 4.5	4.5		5.0 5.0	5.0	
				Bottom	8	25.7 25.7	25.7	8.0 7.9	8.0	35.3 35.3	35.3	87.8 87.5	87.7	6.4 6.3	6.4		4.1 3.8	4.0		5.0 5.0	5.0	
29-Jun-09	Cloudy	Calm	17:06	Surface	1	26.8 26.8	26.8	8.0 7.6	7.8	33.4 34.7	34.1	92.1 91.4	91.8	6.8 6.7	6.8	6.8	4.4 4.6	4.5	3.8	9.0 10.0	9.5	10.8
				Middle	4.5	26.7 26.6	26.7	8.1 8.2	8.2	35.5 36.4	36.0	90.6 90.5	90.6	6.7 6.6	6.7		3.9 3.6	3.8		11.0 11.0	11.0	
				Bottom	8	26.6 26.6	26.6	7.7 8.1	7.9	33.6 35.3	34.5	90.3 90.3	90.3	6.7 6.7	6.7		3.2 3.1	3.2		12.0 12.0	12.0	

Remarks: \* DA: Depth-Averaged

\*\* Calm: Small or no wave; Moderate: Between calm and rough; Rough : White capped or rougher

## Water Quality Monitoring Results at I1 - Mid-Flood Tide

Date	Weather Condition	Sea Condition**	Sampling Time	Depth (m)		Water Temperature (°C)		pH		Salinity ppt		DO Saturation (%)		Dissolved Oxygen (mg/L)			Turbidity(NTU)			Suspended Solids (mg/L)		
						Value	Average	Value	Average	Value	Average	Value	Average	Value	Average	DA*	Value	Average	DA*	Value	Average	DA*
1-Jun-09	Sunny	Calm	13:46	Surface	1	26.2 26.2	26.2	7.8 7.8	7.8	35.8 35.8	35.8	100.8 100.8	100.8	7.4 7.4	7.4	7.2	2.8 2.7	2.8	3.1	6.0 6.0	6.0	9.3
				Middle	4.5	26.0 26.0	26.0	8.1 7.8	8.0	35.9 35.9	35.9	93.1 93.1	93.1	6.9 6.9	6.9		2.9 2.9	2.9		7.0 7.0	7.0	
				Bottom	8	25.9 25.9	25.9	7.8 8.2	8.0	35.8 35.8	35.8	92.6 92.6	92.6	6.9 6.9	6.9		3.5 3.7	3.6		15.0 15.0	15.0	
3-Jun-09	Cloudy	Calm	16:29	Surface	1	25.1 25.2	25.2	7.6 7.5	7.6	37.4 37.3	37.4	102.6 104.7	103.7	7.8 7.9	7.9	7.6	2.6 2.5	2.6	3.1	9.0 10.0	9.5	10.8
				Middle	4.5	26.1 26.2	26.2	7.9 7.7	7.8	37.1 37.0	37.1	96.1 94.8	95.5	7.2 7.1	7.2		2.6 2.9	2.8		10.0 10.0	10.0	
				Bottom	8	26.3 26.3	26.3	7.7 8.0	7.9	36.9 36.9	36.9	87.4 86.8	87.1	6.5 6.5	6.5		3.7 3.8	3.8		13.0 13.0	13.0	
5-Jun-09	Fine	Calm	16:42	Surface	1	30.4 30.4	30.4	7.7 7.7	7.7	34.8 34.8	34.8	99.5 99.5	99.5	6.9 6.9	6.9	7.0	4.8 4.8	4.8	5.1	4.0 5.0	4.5	8.8
				Middle	4.5	29.9 29.9	29.9	8.3 8.1	8.2	35.2 35.2	35.2	99.3 99.1	99.2	7.0 6.9	7.0		5.5 5.5	5.5		5.0 5.0	5.0	
				Bottom	8	29.9 29.8	29.9	7.9 8.2	8.1	35.9 35.8	35.9	98.4 98.1	98.3	6.9 6.8	6.9		4.8 5.1	5.0		17.0 17.0	17.0	
8-Jun-09	Cloudy	Moderate	16:55	Surface	1	24.8 24.8	24.8	7.7 7.8	7.8	34.4 34.8	34.6	89.1 88.2	88.7	6.7 6.5	6.6	6.5	3.6 3.6	3.6	3.4	0.0 3.0	1.5	3.5
				Middle	4.5	24.9 24.9	24.9	8.1 7.9	8.0	34.9 34.7	34.8	87.4 87.5	87.5	6.4 6.4	6.4		3.2 3.3	3.3		6.0 6.0	6.0	
				Bottom	8	24.9 24.9	24.9	7.9 8.2	8.1	34.8 31.5	33.2	84.6 84.7	84.7	6.2 6.2	6.2		3.4 3.1	3.3		6.0 6.0	6.0	
10-Jun-09	Cloudy	Calm	08:53	Surface	1	28.8 28.8	28.8	7.7 7.7	7.7	31.8 31.9	31.9	91.1 90.5	90.8	6.5 6.5	6.5	6.5	4.2 4.4	4.3	4.4	8.0 8.0	8.0	6.5
				Middle	4.5	28.7 28.7	28.7	8.1 7.7	7.9	32.2 32.2	32.2	88.6 88.9	88.8	6.4 6.4	6.4		4.6 4.5	4.6		7.0 7.0	7.0	
				Bottom	8	27.8 27.8	27.8	7.9 8.3	8.1	36.7 36.7	36.7	86.4 86.4	86.4	6.2 6.2	6.2		4.1 4.2	4.2		4.0 5.0	4.5	
12-Jun-09	Cloudy	Calm	09:09	Surface	1	25.1 25.2	25.2	7.8 7.8	7.8	36.6 36.5	36.6	103.5 105.6	104.6	7.9 8.0	8.0	7.7	3.5 3.5	3.5	3.8	4.0 4.0	4.0	4.2
				Middle	4.5	26.1 26.2	26.2	8.2 8.0	8.1	36.3 36.2	36.3	97.1 95.8	96.5	7.3 7.2	7.3		3.6 3.8	3.7		5.0 4.0	4.5	
				Bottom	8	26.3 26.4	26.4	8.0 8.2	8.1	36.1 36.1	36.1	88.5 87.9	88.2	6.6 6.6	6.6		4.2 4.2	4.2		4.0 4.0	4.0	
15-Jun-09	Cloudy	Calm	10:21	Surface	1	27.6 27.6	27.6	7.3 7.5	7.4	34.8 34.8	34.8	91.8 92.4	92.1	6.5 6.6	6.6	6.7	3.7 3.8	3.8	3.1	9.0 10.0	9.5	10.2
				Middle	4.5	27.4 27.4	27.4	7.5 7.5	7.5	34.3 34.3	34.3	93.9 93.8	93.9	6.7 6.7	6.7		2.9 3.1	3.0		10.0 10.0	10.0	
				Bottom	8	27.4 27.4	27.4	7.8 7.8	7.8	33.9 34.1	34.0	93.0 92.6	92.8	6.6 6.6	6.6		2.7 2.3	2.5		11.0 11.0	11.0	
17-Jun-09	Sunny	Calm	13:32	Surface	1	29.7 29.7	29.7	7.7 7.6	7.7	34.0 38.0	36.0	90.5 90.5	90.5	6.7 6.7	6.7	6.7	4.6 4.3	4.5	4.4	12.0 11.0	11.5	9.2
				Middle	4.5	29.6 29.6	29.6	7.7 7.7	7.7	38.0 37.4	37.7	90.5 90.5	90.5	6.7 6.7	6.7		4.2 4.3	4.3		8.0 8.0	8.0	
				Bottom	8	29.6 29.6	29.6	8.1 8.2	8.2	38.2 36.6	37.4	90.4 90.4	90.4	6.7 6.7	6.7		4.4 4.2	4.3		8.0 8.0	8.0	
19-Jun-09	Cloudy	Calm	16:21	Surface	1	29.2 29.3	29.3	7.5 7.6	7.6	37.1 38.0	37.6	92.7 92.6	92.7	6.5 6.5	6.5	6.5	4.3 4.3	4.3	4.1	5.0 5.0	5.0	4.2
				Middle	4.5	29.3 29.0	29.2	7.9 7.8	7.9	34.0 37.2	35.6	92.5 93.2	92.9	6.5 6.5	6.5		4.2 4.4	4.3		3.0 4.0	3.5	
				Bottom	8	28.9 28.9	28.9	7.9 8.0	8.0	34.3 36.7	35.5	91.1 91.0	91.1	6.3 6.3	6.3		3.6 3.8	3.7		4.0 4.0	4.0	

Remarks: \* DA: Depth-Averaged

\*\* Calm: Small or no wave; Moderate: Between calm and rough; Rough : White capped or rougher

## Water Quality Monitoring Results at I1 - Mid-Flood Tide

Date	Weather Condition	Sea Condition**	Sampling Time	Depth (m)		Water Temperature (°C)		pH		Salinity ppt		DO Saturation (%)		Dissolved Oxygen (mg/L)			Turbidity(NTU)			Suspended Solids (mg/L)		
						Value	Average	Value	Average	Value	Average	Value	Average	Value	Average	DA*	Value	Average	DA*	Value	Average	DA*
22-Jun-09	Cloudy	Calm	16:55	Surface	1	28.1 28.1	28.1	7.9 7.9	7.9	33.3 33.6	33.5	86.5 86.3	86.4	6.5 6.5	6.5	6.5	3.1 3.2	3.2	3.3	8.0 8.0	8.0	9.7
				Middle	4.5	28.2 28.2	28.2	8.0 7.9	8.0	33.7 33.6	33.7	85.8 86.0	85.9	6.4 6.5	6.5		3.6 3.5	3.6		9.0 9.0	9.0	
				Bottom	8	28.1 28.1	28.1	8.0 8.1	8.1	33.6 30.6	32.1	86.6 87.1	86.9	6.5 6.5	6.5		3.2 3.2	3.2		12.0 12.0	12.0	
24-Jun-09	Cloudy	Calm	08:50	Surface	1	28.5 28.5	28.5	7.5 7.5	7.5	32.4 32.9	32.7	95.5 93.0	94.3	7.2 7.0	7.1	6.9	4.1 4.2	4.2	4.0	4.0 4.0	4.0	5.0
				Middle	4.5	28.3 28.4	28.4	7.7 7.6	7.7	36.0 36.9	36.5	88.7 88.7	88.7	6.7 6.7	6.7		4.2 4.1	4.2		6.0 6.0	6.0	
				Bottom	8	28.3 28.3	28.3	7.8 7.9	7.9	36.3 35.6	36.0	86.3 86.2	86.3	6.5 6.6	6.6		3.7 3.2	3.5		5.0 5.0	5.0	
26-Jun-09	Rainy	Calm	08:43	Surface	1	26.4 26.5	26.5	7.7 7.7	7.7	33.1 33.9	33.5	91.9 92.1	92.0	6.6 6.6	6.6	6.7	3.6 3.4	3.5	3.5	7.0 6.0	6.5	5.5
				Middle	4.5	26.4 26.4	26.4	8.1 7.9	8.0	35.1 36.0	35.6	92.2 92.1	92.2	6.7 6.6	6.7		3.6 3.7	3.7		6.0 6.0	6.0	
				Bottom	8	26.3 26.4	26.4	7.9 8.2	8.1	32.7 34.8	33.8	91.3 91.0	91.2	6.6 6.6	6.6		3.5 3.2	3.4		4.0 4.0	4.0	
29-Jun-09	Cloudy	Calm	11:42	Surface	1	26.7 26.7	26.7	7.7 7.9	7.8	33.8 32.9	33.4	93.8 93.9	93.9	6.8 6.9	6.9	7.0	4.3 4.2	4.3	3.8	12.0 12.0	12.0	9.3
				Middle	4.5	26.6 26.5	26.6	7.9 7.9	7.9	33.9 36.1	35.0	93.9 93.9	93.9	7.0 6.9	7.0		4.1 3.6	3.9		8.0 8.0	8.0	
				Bottom	8	26.6 26.5	26.6	8.1 8.2	8.2	34.8 34.6	34.7	93.8 93.6	93.7	6.9 6.8	6.9		3.4 3.2	3.3		8.0 8.0	8.0	

Remarks: \* DA: Depth-Averaged

\*\* Calm: Small or no wave; Moderate: Between calm and rough; Rough : White capped or rougher



## Water Quality Monitoring Results at I2 - Mid-Ebb Tide

Date	Weather Condition	Sea Condition**	Sampling Time	Depth (m)		Water Temperature (°C)		pH		Salinity ppt		DO Saturation (%)		Dissolved Oxygen (mg/L)			Turbidity (NTU)			Suspended Solids (mg/L)		
						Value	Average	Value	Average	Value	Average	Value	Average	Value	Average	DA*	Value	Average	DA*	Value	Average	DA*
1-Jun-09	Sunny	Calm	08:59	Surface	1	24.7 24.7	24.7	8.0 7.9	8.0	35.9 35.9	35.9	89.4 87.4	88.4	6.6 6.4	6.5	6.5	2.4 2.4	2.4	2.4	9.0 9.0	9.0	11.0
				Middle	4.5	24.4 24.4	24.4	8.1 7.9	8.0	35.9 35.9	35.9	88.0 87.0	87.5	6.5 6.4	6.5		2.2 2.1	2.2		10.0 10.0		
				Bottom	8	24.3 24.3	24.3	8.1 7.9	8.0	36.0 36.0	36.0	87.0 84.6	85.8	6.4 6.3	6.4		2.5 2.7	2.6		14.0 14.0		
3-Jun-09	Cloudy	Calm	10:25	Surface	1	24.4 24.4	24.4	7.8 7.7	7.8	36.3 36.4	36.4	101.1 101.1	101.1	7.6 7.6	7.6	7.3	2.4 2.5	2.5	2.6	12.0 12.0	12.0	8.5
				Middle	4.5	24.5 24.5	24.5	7.8 7.7	7.8	36.9 36.9	36.9	93.7 93.0	93.4	7.0 7.0	7.0		2.4 2.3	2.4		6.0 7.0		
				Bottom	8	24.5 24.5	24.5	7.8 7.7	7.8	36.8 36.9	36.9	87.7 87.3	87.5	6.6 6.5	6.6		2.9 2.9	2.9		7.0 7.0		
5-Jun-09	Sunny	Calm	11:31	Surface	1	30.8 30.8	30.8	7.7 7.7	7.7	34.2 34.7	34.5	98.4 98.6	98.5	6.8 6.8	6.8	6.8	5.1 5.0	5.1	5.2	8.0 8.0	8.0	8.0
				Middle	4.5	30.7 30.7	30.7	7.6 8.2	7.9	34.7 35.1	34.9	98.6 98.6	98.6	6.8 6.8	6.8		5.3 5.3	5.3		9.0 9.0		
				Bottom	8	30.1 30.1	30.1	8.4 8.4	8.4	35.5 35.5	35.5	94.9 94.7	94.8	6.6 6.6	6.6		5.1 5.2	5.2		7.0 7.0		
8-Jun-09	Cloudy	Moderate	12:49	Surface	1	26.4 26.5	26.5	7.8 7.8	7.8	36.2 36.1	36.2	88.2 88.0	88.1	6.5 6.5	6.5	6.5	4.4 3.6	4.0	3.6	4.0 4.0	4.0	7.3
				Middle	4.5	26.5 26.4	26.5	7.9 7.8	7.9	36.3 36.9	36.6	87.5 87.7	87.6	6.5 6.5	6.5		3.5 3.3	3.4		6.0 6.0		
				Bottom	8	26.4 26.4	26.4	8.1 7.9	8.0	35.8 36.8	36.3	85.3 85.8	85.6	6.2 6.3	6.3		3.6 3.2	3.4		12.0 12.0		
10-Jun-09	Cloudy	Calm	13:42	Surface	1	28.7 28.7	28.7	8.1 7.8	8.0	32.5 32.5	32.5	90.2 89.3	89.8	6.5 6.4	6.5	6.4	5.0 4.9	5.0	4.8	7.0 7.0	7.0	6.3
				Middle	4.5	28.6 28.6	28.6	8.1 7.8	8.0	32.8 32.8	32.8	87.9 87.5	87.7	6.3 6.3	6.3		5.0 5.0	5.0		6.0 6.0		
				Bottom	8	28.6 28.6	28.6	8.0 7.8	7.9	33.1 33.1	33.1	86.8 86.7	86.8	6.2 6.2	6.2		4.5 4.4	4.5		6.0 6.0		
12-Jun-09	Cloudy	Calm	15:02	Surface	1	25.5 25.5	25.5	7.9 7.9	7.9	35.6 35.6	35.6	102.0 102.0	102.0	7.7 7.7	7.7	7.4	2.6 2.6	2.6	2.9	4.0 4.0	4.0	3.7
				Middle	4.5	25.6 25.7	25.7	8.0 8.1	8.1	36.1 36.1	36.1	94.7 94.0	94.4	7.1 7.1	7.1		2.9 2.8	2.9		4.0 4.0		
				Bottom	8	25.7 25.7	25.7	8.2 8.1	8.2	36.1 36.1	36.1	88.8 88.4	88.6	6.7 6.6	6.7		3.2 3.2	3.2		3.0 3.0		
15-Jun-09	Cloudy	Calm	16:41	Surface	1	26.4 26.4	26.4	7.5 7.6	7.6	34.0 34.0	34.0	90.1 90.2	90.2	6.4 6.4	6.4	6.4	2.4 2.5	2.5	2.3	10.0 10.0	10.0	9.3
				Middle	4.5	26.4 26.4	26.4	7.5 7.4	7.5	34.9 34.9	34.9	90.1 89.9	90.0	6.4 6.4	6.4		2.3 2.2	2.3		9.0 9.0		
				Bottom	8	26.4 26.3	26.4	7.7 7.6	7.7	35.0 33.3	34.2	89.6 89.4	89.5	6.4 6.4	6.4		2.1 2.3	2.2		9.0 9.0		
17-Jun-09	Sunny	Calm	08:38	Surface	1	28.2 28.1	28.2	8.0 7.7	7.9	35.1 37.9	36.5	87.2 87.2	87.2	6.4 6.4	6.4	6.5	3.8 3.9	3.9	4.1	8.0 8.0	8.0	8.0
				Middle	4.5	28.2 28.2	28.2	7.9 8.1	8.0	38.3 37.2	37.8	88.5 88.6	88.6	6.5 6.5	6.5		4.2 4.3	4.3		9.0 9.0		
				Bottom	8	28.2 28.2	28.2	7.9 7.6	7.8	38.0 38.1	38.1	88.5 88.5	88.5	6.1 6.1	6.1		4.1 4.3	4.2		7.0 7.0		
19-Jun-09	Cloudy	Calm	09:55	Surface	1	28.2 28.3	28.3	7.7 7.7	7.7	37.4 34.8	36.1	91.1 91.4	91.3	6.5 6.5	6.5	6.5	4.2 4.2	4.2	4.0	4.0 4.0	4.0	6.3
				Middle	4.5	28.2 28.1	28.2	7.7 7.8	7.8	37.0 37.1	37.1	91.8 91.5	91.7	6.5 6.4	6.5		4.3 4.4	4.4		9.0 9.0		
				Bottom	8	28.1 28.1	28.1	8.0 8.0	8.0	37.9 37.8	37.9	88.4 88.6	88.5	6.3 6.1	6.2		3.5 3.3	3.4		6.0 6.0		

Remarks: \* DA: Depth-Averaged

\*\* Calm: Small or no wave; Moderate: Between calm and rough; Rough: White capped or rougher

## Water Quality Monitoring Results at I2 - Mid-Ebb Tide

Date	Weather Condition	Sea Condition**	Sampling Time	Depth (m)		Water Temperature (°C)		pH		Salinity ppt		DO Saturation (%)		Dissolved Oxygen (mg/L)			Turbidity (NTU)			Suspended Solids (mg/L)		
						Value	Average	Value	Average	Value	Average	Value	Average	Value	Average	DA*	Value	Average	DA*	Value	Average	DA*
22-Jun-09	Cloudy	Calm	12:10	Surface	1	28.0 28.1	28.1	7.9 7.8	7.9	30.6 30.9	30.8	87.0 86.3	86.7	6.6 6.4	6.5	6.5	4.1 3.6	3.9	3.6	10.0 10.0	10.0	9.7
				Middle	4.5	27.9 27.9	27.9	8.1 7.8	8.0	33.6 34.1	33.9	85.5 85.6	85.6	6.4 6.4	6.4		3.6 3.5	3.6		10.0 10.0	10.0	
				Bottom	8	27.9 27.8	27.9	8.0 7.9	8.0	34.1 34.2	34.2	85.7 85.8	85.8	6.4 6.5	6.5		3.2 3.1	3.2		9.0 9.0	9.0	
24-Jun-09	Cloudy	Calm	14:05	Surface	1	29.1 29.1	29.1	7.6 7.7	7.7	33.3 36.5	34.9	86.7 86.5	86.6	6.6 6.5	6.6	6.6	2.9 2.8	2.9	3.2	6.0 6.0	6.0	5.7
				Middle	4.5	28.9 28.9	28.9	7.6 7.6	7.6	36.6 35.1	35.9	86.0 86.2	86.1	6.4 6.5	6.5		3.6 3.6	3.6		6.0 6.0	6.0	
				Bottom	8	28.9 28.9	28.9	7.7 7.7	7.7	36.4 36.5	36.5	86.8 87.3	87.1	6.5 6.6	6.6		3.1 3.2	3.2		5.0 5.0	5.0	
26-Jun-09	Rainy	Calm	15:50	Surface	1	25.8 25.8	25.8	7.9 7.8	7.9	34.4 33.2	33.8	94.7 95.3	95.0	6.8 6.8	6.8	6.9	3.2 3.6	3.4	3.5	5.0 5.0	5.0	5.0
				Middle	4.5	25.7 25.7	25.7	7.9 8.0	8.0	36.2 32.4	34.3	96.4 96.4	96.4	7.0 6.9	7.0		4.1 4.3	4.2		5.0 5.0	5.0	
				Bottom	8	25.7 25.7	25.7	8.2 8.1	8.2	34.4 35.1	34.8	95.5 95.3	95.4	7.0 6.9	7.0		2.6 2.9	2.8		5.0 5.0	5.0	
29-Jun-09	Cloudy	Calm	17:07	Surface	1	26.8 26.8	26.8	7.8 8.1	8.0	35.3 35.9	35.6	90.8 90.8	90.8	6.6 6.7	6.7	6.7	3.8 3.8	3.8	3.8	9.0 10.0	9.5	10.8
				Middle	4.5	26.7 26.7	26.7	7.8 7.8	7.8	36.1 35.8	36.0	90.9 91.0	91.0	6.7 6.7	6.7		4.0 4.0	4.0		12.0 12.0	12.0	
				Bottom	8	26.6 26.7	26.7	8.0 8.0	8.0	35.9 35.4	35.7	90.9 90.9	90.9	6.7 6.7	6.7		3.6 3.7	3.7		11.0 11.0	11.0	

Remarks: \* DA: Depth-Averaged

\*\* Calm: Small or no wave; Moderate: Between calm and rough; Rough : White capped or rougher

## Water Quality Monitoring Results at I2 - Mid-Flood Tide

Date	Weather Condition	Sea Condition**	Sampling Time	Depth (m)		Water Temperature (°C)		pH		Salinity ppt		DO Saturation (%)		Dissolved Oxygen (mg/L)			Turbidity(NTU)			Suspended Solids (mg/L)		
						Value	Average	Value	Average	Value	Average	Value	Average	Value	Average	DA*	Value	Average	DA*	Value	Average	DA*
1-Jun-09	Sunny	Calm	13:32	Surface	1	26.2 26.2	26.2	7.7 7.7	7.7	35.9 36.0	36.0	92.4 92.6	92.5	6.8 6.8	6.8	6.8	2.4 2.4	2.4	2.7	8.0 8.0	8.0	10.3
				Middle	4.5	26.1 26.1	26.1	7.8 7.7	7.8	35.9 35.8	35.9	90.0 90.2	90.1	6.7 6.7	6.7		2.5 2.4	2.5		11.0 11.0	11.0	
				Bottom	8	26.0 26.0	26.0	7.7 7.8	7.8	35.8 35.8	35.8	89.1 89.1	89.1	6.6 6.6	6.6		3.1 3.3	3.2		12.0 12.0	12.0	
3-Jun-09	Cloudy	Calm	16:23	Surface	1	26.3 26.3	26.3	7.6 7.6	7.6	36.2 36.2	36.2	93.7 93.4	93.6	7.0 7.0	7.0	6.8	2.5 2.3	2.4	2.6	11.0 11.0	11.0	11.0
				Middle	4.5	26.3 26.3	26.3	7.6 7.6	7.6	36.7 36.7	36.7	88.6 88.6	88.6	6.6 6.6	6.6		2.3 2.4	2.4		13.0 13.0	13.0	
				Bottom	8	26.3 26.3	26.3	7.6 7.6	7.6	36.8 36.8	36.8	84.7 84.5	84.6	6.3 6.3	6.3		3.0 3.0	3.0		9.0 9.0	9.0	
5-Jun-09	Fine	Calm	16:48	Surface	1	30.3 30.3	30.3	8.5 8.0	8.3	35.4 35.4	35.4	101.3 101.4	101.4	7.0 7.0	7.0	7.0	5.0 5.1	5.1	5.3	15.0 15.0	15.0	10.5
				Middle	4.5	30.1 30.1	30.1	8.0 8.3	8.2	35.6 35.6	35.6	101.2 100.9	101.1	7.0 7.0	7.0		4.9 4.8	4.9		10.0 11.0	10.5	
				Bottom	8	29.8 29.8	29.8	7.8 7.6	7.7	36.0 36.0	36.0	99.4 98.7	99.1	6.9 6.9	6.9		5.6 6.0	5.8		6.0 6.0	6.0	
8-Jun-09	Cloudy	Moderate	16:53	Surface	1	24.8 24.8	24.8	7.9 7.8	7.9	34.1 33.3	33.7	88.7 88.5	88.6	6.6 6.5	6.6	6.4	3.6 3.7	3.7	3.4	7.0 7.0	7.0	7.3
				Middle	4.5	24.8 24.8	24.8	7.8 7.8	7.8	34.9 34.6	34.8	83.6 86.4	85.0	6.1 6.3	6.2		3.9 3.2	3.6		6.0 6.0	6.0	
				Bottom	8	24.8 24.8	24.8	7.8 7.8	7.8	32.7 32.0	32.4	85.8 86.0	85.9	6.2 6.3	6.3		2.9 2.7	2.8		9.0 8.0	8.5	
10-Jun-09	Cloudy	Calm	08:45	Surface	1	28.7 28.7	28.7	7.6 7.6	7.6	32.5 32.5	32.5	91.4 90.7	91.1	6.5 6.5	6.5	6.4	5.0 5.0	5.0	4.8	6.0 6.0	6.0	7.7
				Middle	4.5	28.6 28.6	28.6	7.7 7.7	7.7	32.9 32.9	32.9	88.5 87.9	88.2	6.3 6.3	6.3		4.9 4.7	4.8		8.0 8.0	8.0	
				Bottom	8	28.6 28.6	28.6	7.7 7.7	7.7	33.0 33.0	33.0	86.9 86.8	86.9	6.2 6.2	6.2		4.5 4.8	4.7		9.0 9.0	9.0	
12-Jun-09	Cloudy	Calm	09:06	Surface	1	26.3 26.3	26.3	8.0 7.9	8.0	35.4 35.4	35.4	94.7 94.4	94.6	7.1 7.1	7.1	6.9	3.5 3.3	3.4	3.6	3.0 3.0	3.0	3.7
				Middle	4.5	26.3 26.3	26.3	7.9 8.0	8.0	35.9 35.9	35.9	89.7 89.7	89.7	6.7 6.7	6.7		3.3 3.5	3.4		4.0 4.0	4.0	
				Bottom	8	26.3 26.3	26.3	7.9 7.8	7.9	36.0 36.0	36.0	85.8 85.6	85.7	6.4 6.4	6.4		3.9 3.9	3.9		4.0 4.0	4.0	
15-Jun-09	Cloudy	Calm	10:20	Surface	1	27.6 27.4	27.5	7.2 7.3	7.3	33.4 34.2	33.8	92.6 92.8	92.7	6.6 6.6	6.6	6.6	3.2 3.7	3.5	3.3	14.0 14.0	14.0	10.8
				Middle	4.5	27.5 27.4	27.5	7.7 7.2	7.5	34.8 34.9	34.9	92.8 92.8	92.8	6.6 6.6	6.6		3.3 3.3	3.3		8.0 9.0	8.5	
				Bottom	8	27.4 27.4	27.4	7.5 7.6	7.6	34.5 34.6	34.6	92.0 91.6	91.8	6.6 6.6	6.6		3.4 2.9	3.2		10.0 10.0	10.0	
17-Jun-09	Sunny	Calm	13:31	Surface	1	29.7 29.8	29.8	7.5 7.6	7.6	34.1 34.0	34.1	92.9 92.9	92.9	6.8 6.8	6.8	6.8	4.3 4.5	4.4	4.1	8.0 8.0	8.0	9.8
				Middle	4.5	29.6 29.6	29.6	7.4 7.7	7.6	38.1 38.7	38.4	92.9 92.9	92.9	6.8 6.8	6.8		3.9 3.7	3.8		15.0 14.0	14.5	
				Bottom	8	29.6 29.5	29.6	7.3 7.5	7.4	38.2 38.2	38.2	91.3 91.3	91.3	6.7 6.7	6.7		4.3 4.1	4.2		7.0 7.0	7.0	
19-Jun-09	Cloudy	Calm	16:20	Surface	1	29.0 28.9	29.0	7.7 7.6	7.7	37.4 37.7	37.6	94.1 94.0	94.1	6.6 6.6	6.6	6.6	3.2 3.6	3.4	3.7	3.0 3.0	3.0	5.3
				Middle	4.5	28.9 28.9	28.9	7.8 7.7	7.8	34.8 35.7	35.3	94.3 94.5	94.4	6.6 6.6	6.6		4.8 4.6	4.7		8.0 8.0	8.0	
				Bottom	8	28.8 28.9	28.9	7.6 7.6	7.6	35.8 35.9	35.9	91.5 91.5	91.5	6.4 6.4	6.4		3.2 2.6	2.9		5.0 5.0	5.0	

Remarks: \* DA: Depth-Averaged

\*\* Calm: Small or no wave; Moderate: Between calm and rough; Rough : White capped or rougher

## Water Quality Monitoring Results at I2 - Mid-Flood Tide

Date	Weather Condition	Sea Condition**	Sampling Time	Depth (m)		Water Temperature (°C)		pH		Salinity ppt		DO Saturation (%)		Dissolved Oxygen (mg/L)			Turbidity(NTU)			Suspended Solids (mg/L)		
						Value	Average	Value	Average	Value	Average	Value	Average	Value	Average	DA*	Value	Average	DA*	Value	Average	DA*
22-Jun-09	Cloudy	Calm	16:53	Surface	1	28.1 28.1	28.1	7.9 7.9	7.9	33.0 32.3	32.7	85.1 85.2	85.2	6.5 6.4	6.5	6.5	2.3 2.1	2.2	3.1	8.0 8.0	8.0	9.7
				Middle	4.5	28.0 28.0	28.0	7.9 7.8	7.9	33.8 33.8	33.8	85.5 85.9	85.7	6.4 6.4	6.4		3.7 3.8	3.8		9.0 9.0	9.0	
				Bottom	8	28.2 28.1	28.2	8.0 7.8	7.9	31.8 31.0	31.4	86.9 86.8	86.9	6.5 6.6	6.6		3.2 3.4	3.3		12.0 12.0	12.0	
24-Jun-09	Cloudy	Calm	08:48	Surface	1	28.5 28.5	28.5	7.4 7.5	7.5	35.3 35.9	35.6	88.3 87.5	87.9	6.7 6.6	6.7	6.6	4.4 4.6	4.5	3.8	4.0 4.0	4.0	6.3
				Middle	4.5	28.3 28.3	28.3	7.7 7.4	7.6	36.0 35.9	36.0	86.7 86.8	86.8	6.5 6.5	6.5		3.2 3.5	3.4		8.0 8.0	8.0	
				Bottom	8	28.3 28.3	28.3	7.7 7.7	7.7	35.4 36.6	36.0	86.9 87.0	87.0	6.5 6.6	6.6		3.1 3.6	3.4		7.0 7.0	7.0	
26-Jun-09	Rainy	Calm	08:42	Surface	1	26.5 26.5	26.5	8.0 7.8	7.9	34.0 34.8	34.4	91.1 91.7	91.4	6.5 6.6	6.6	6.7	4.2 4.3	4.3	3.5	7.0 7.0	7.0	6.8
				Middle	4.5	26.4 26.3	26.4	7.8 7.9	7.9	34.7 35.2	35.0	93.2 93.1	93.2	6.7 6.7	6.7		3.6 3.2	3.4		6.0 7.0	6.5	
				Bottom	8	26.3 26.4	26.4	7.8 7.7	7.8	35.4 34.7	35.1	92.3 91.9	92.1	6.6 6.7	6.7		2.7 2.9	2.8		7.0 7.0	7.0	
29-Jun-09	Cloudy	Calm	11:39	Surface	1	26.7 26.7	26.7	7.6 7.7	7.7	35.4 36.8	36.1	92.2 92.4	92.3	6.8 6.8	6.8	6.8	4.8 4.2	4.5	3.9	9.0 8.0	8.5	11.2
				Middle	4.5	26.5 26.5	26.5	8.1 7.6	7.9	36.1 36.4	36.3	92.6 92.6	92.6	6.8 6.8	6.8		4.1 3.6	3.9		11.0 11.0	11.0	
				Bottom	8	26.5 26.4	26.5	8.0 8.0	8.0	36.2 36.4	36.3	92.4 92.4	92.4	6.8 6.8	6.8		3.2 3.2	3.2		14.0 14.0	14.0	

Remarks: \* DA: Depth-Averaged

\*\* Calm: Small or no wave; Moderate: Between calm and rough; Rough : White capped or rougher

### Water Quality Monitoring Results at Intake A - Mid-Ebb Tide

Date	Weather Condition	Sea Condition**	Sampling Time	Depth (m)		Water Temperature (°C)		pH		Salinity ppt		DO Saturation (%)		Dissolved Oxygen (mg/L)			Turbidity (NTU)			Suspended Solids (mg/L)		
						Value	Average	Value	Average	Value	Average	Value	Average	Value	Average	DA*	Value	Average	DA*	Value	Average	DA*
1-Jun-09	Sunny	Calm	08:47	Surface	1	24.9 24.8	24.9	8.1 7.8	8.0	35.5 35.6	35.6	92.3 92.4	92.4	6.8 6.8	6.8	6.8	2.5 2.4	2.5	2.5	12.0 11.0	11.5	9.5
				Middle	5	24.5 24.5	24.5	8.1 8.2	8.2	35.7 35.7	35.7	93.2 90.0	91.6	6.9 6.6	6.8		2.3 2.3	2.3		10.0 10.0	10.0	
				Bottom	9	24.7 24.7	24.7	7.9 8.0	8.0	36.0 36.0	36.0	90.0 89.9	90.0	6.6 6.6	6.6		2.7 2.8	2.8		7.0 7.0	7.0	
3-Jun-09	Cloudy	Calm	10:10	Surface	1	24.2 24.2	24.2	7.8 7.6	7.7	36.4 36.3	36.4	98.3 99.2	98.8	7.4 7.5	7.5	7.2	2.3 2.5	2.4	2.7	7.0 7.0	7.0	10.7
				Middle	5	24.5 24.5	24.5	8.0 8.0	8.0	36.6 36.6	36.6	92.2 91.7	92.0	6.9 6.9	6.9		2.7 2.7	2.7		9.0 9.0	9.0	
				Bottom	9	24.5 24.5	24.5	7.7 7.9	7.8	36.7 36.7	36.7	86.9 86.9	86.9	6.5 6.5	6.5		2.9 2.8	2.9		16.0 16.0	16.0	
5-Jun-09	Sunny	Calm	11:20	Surface	1	30.3 30.4	30.4	7.8 7.8	7.8	34.5 34.4	34.5	100.2 100.2	100.2	7.0 7.0	7.0	7.0	4.7 4.9	4.8	5.8	12.0 11.0	11.5	9.8
				Middle	5	29.9 29.8	29.9	7.7 7.6	7.7	35.2 35.2	35.2	99.7 99.6	99.7	7.0 6.9	7.0		5.5 5.8	5.7		10.0 10.0	10.0	
				Bottom	9	29.7 29.7	29.7	8.1 8.1	8.1	35.4 35.5	35.5	99.0 98.6	98.8	7.0 6.9	7.0		6.9 7.0	7.0		8.0 8.0	8.0	
8-Jun-09	Cloudy	Moderate	12:53	Surface	1	26.3 26.3	26.3	8.0 7.8	7.9	32.9 36.4	34.7	92.5 91.7	92.1	6.7 6.7	6.7	6.6	2.8 2.7	2.8	2.6	9.0 9.0	9.0	7.3
				Middle	5	26.5 26.5	26.5	8.0 8.1	8.1	36.2 35.2	35.7	89.4 89.1	89.3	6.5 6.5	6.5		2.6 2.3	2.5		5.0 5.0	5.0	
				Bottom	9	26.4 26.4	26.4	7.8 7.9	7.9	36.3 34.3	35.3	88.7 88.6	88.7	6.5 6.4	6.5		2.3 2.4	2.4		8.0 8.0	8.0	
10-Jun-09	Cloudy	Calm	13:34	Surface	1	29.0 29.0	29.0	8.0 7.7	7.9	31.7 31.7	31.7	93.3 93.3	93.3	6.6 6.6	6.6	6.4	4.8 4.8	4.8	4.7	5.0 6.0	5.5	6.8
				Middle	5	28.8 28.8	28.8	8.0 8.2	8.1	32.1 32.1	32.1	87.2 86.4	86.8	6.2 6.1	6.2		4.9 4.9	4.9		8.0 8.0	8.0	
				Bottom	9	28.8 28.8	28.8	7.8 7.9	7.9	32.3 32.3	32.3	86.3 86.2	86.3	6.2 6.2	6.2		4.4 4.3	4.4		7.0 7.0	7.0	
12-Jun-09	Cloudy	Calm	14:41	Surface	1	25.4 25.4	25.4	8.0 7.9	8.0	35.6 35.5	35.6	99.3 100.2	99.8	7.5 7.6	7.6	7.3	3.1 3.1	3.1	2.9	3.0 3.0	3.0	3.2
				Middle	5	25.6 25.7	25.7	8.0 8.1	8.1	35.8 35.9	35.9	93.2 92.7	93.0	7.0 7.0	7.0		3.0 2.9	3.0		3.0 3.0	3.0	
				Bottom	9	25.7 25.7	25.7	8.1 8.1	8.1	35.9 35.9	35.9	88.0 88.0	88.0	6.6 6.6	6.6		2.7 2.7	2.7		3.0 4.0	3.5	
15-Jun-09	Cloudy	Calm	16:46	Surface	1	26.4 26.5	26.5	7.9 7.3	7.6	32.8 34.9	33.9	89.3 89.6	89.5	6.4 6.5	6.5	6.5	3.0 2.8	2.9	3.0	10.0 10.0	10.0	9.5
				Middle	5	26.4 26.4	26.4	7.7 8.0	7.9	33.5 34.6	34.1	89.8 89.6	89.7	6.4 6.5	6.5		3.2 3.4	3.3		9.0 10.0	9.5	
				Bottom	9	26.4 26.4	26.4	7.4 7.6	7.5	33.9 35.0	34.5	89.1 88.8	89.0	6.4 6.4	6.4		2.8 2.6	2.7		9.0 9.0	9.0	
17-Jun-09	Sunny	Calm	08:41	Surface	1	28.3 28.2	28.3	7.4 7.6	7.5	34.5 36.1	35.3	91.4 88.9	90.2	6.7 6.6	6.7	6.5	3.9 4.3	4.1	3.7	9.0 9.0	9.0	8.3
				Middle	5	28.2 28.2	28.2	7.8 7.6	7.7	38.0 37.9	38.0	84.7 84.7	84.7	6.3 6.3	6.3		3.6 3.5	3.6		4.0 4.0	4.0	
				Bottom	9	28.2 28.2	28.2	7.7 7.9	7.8	38.0 35.7	36.9	87.8 87.8	87.8	6.5 6.5	6.5		3.3 3.6	3.5		12.0 12.0	12.0	
19-Jun-09	Cloudy	Calm	10:00	Surface	1	28.3 28.3	28.3	7.8 7.6	7.7	34.2 37.2	35.7	92.9 92.8	92.9	6.5 6.6	6.6	6.6	4.4 4.2	4.3	3.8	8.0 8.0	8.0	6.2
				Middle	5	28.1 28.1	28.1	7.8 7.9	7.9	37.8 36.1	37.0	92.9 93.2	93.1	6.6 6.6	6.6		3.7 3.4	3.6		6.0 7.0	6.5	
				Bottom	9	28.1 28.0	28.1	7.7 7.9	7.8	37.2 36.8	37.0	90.2 90.2	90.2	6.2 6.3	6.3		3.3 3.4	3.4		4.0 4.0	4.0	

Remarks: \* DA: Depth-Averaged

\*\* Calm: Small or no wave; Moderate: Between calm and rough; Rough: White capped or rougher

### Water Quality Monitoring Results at Intake A - Mid-Ebb Tide

Date	Weather Condition	Sea Condition**	Sampling Time	Depth (m)		Water Temperature (°C)		pH		Salinity ppt		DO Saturation (%)		Dissolved Oxygen (mg/L)			Turbidity (NTU)			Suspended Solids (mg/L)		
						Value	Average	Value	Average	Value	Average	Value	Average	Value	Average	DA*	Value	Average	DA*	Value	Average	DA*
22-Jun-09	Cloudy	Calm	12:18	Surface	1	28.0 28.0	28.0	8.1 7.9	8.0	33.7 33.8	33.8	90.5 89.0	89.8	6.7 6.6	6.7	6.5	3.7 3.8	3.8	3.5	12.0 11.0	11.5	11.2
				Middle	5	27.9 27.8	27.9	8.1 8.1	8.1	30.5 30.5	30.5	85.3 85.3	85.3	6.3 6.3	6.3		3.5 3.4	3.5		7.0 7.0	7.0	
				Bottom	9	27.8 27.8	27.8	7.8 7.9	7.9	33.1 33.5	33.3	85.9 86.8	86.4	6.4 6.4	6.4		3.3 3.1	3.2		15.0 15.0	15.0	
24-Jun-09	Cloudy	Calm	14:09	Surface	1	29.0 29.0	29.0	7.8 7.4	7.6	33.1 34.5	33.8	95.7 95.5	95.6	7.3 7.3	7.3	7.1	3.4 3.4	3.4	3.3	6.0 6.0	6.0	4.5
				Middle	5	28.9 28.9	28.9	7.8 8.0	7.9	36.1 36.1	36.1	90.5 89.3	89.9	6.8 6.7	6.8		3.2 3.3	3.3		4.0 4.0	4.0	
				Bottom	9	28.9 28.9	28.9	7.5 7.7	7.6	36.2 34.3	35.3	88.8 89.0	88.9	6.7 6.7	6.7		3.1 3.1	3.1		3.0 4.0	3.5	
26-Jun-09	Rainy	Calm	15:58	Surface	1	25.8 25.8	25.8	8.0 7.8	7.9	34.3 35.2	34.8	89.1 89.1	89.1	6.4 6.4	6.4	6.4	3.6 3.7	3.7	3.4	4.0 4.0	4.0	5.0
				Middle	5	25.7 25.7	25.7	7.9 8.0	8.0	34.1 34.8	34.5	88.9 88.9	88.9	6.4 6.4	6.4		3.9 3.2	3.6		6.0 6.0	6.0	
				Bottom	9	25.7 25.7	25.7	7.9 8.0	8.0	35.7 35.5	35.6	88.6 88.4	88.5	6.4 6.4	6.4		3.3 2.7	3.0		5.0 5.0	5.0	
29-Jun-09	Cloudy	Calm	17:12	Surface	1	26.9 26.8	26.9	8.3 7.7	8.0	36.3 35.3	35.8	91.4 91.5	91.5	6.7 6.7	6.7	6.8	3.0 3.2	3.1	3.3	8.0 8.0	8.0	9.2
				Middle	5	26.7 26.6	26.7	8.0 8.4	8.2	33.6 36.1	34.9	91.7 91.7	91.7	6.8 6.7	6.8		3.7 3.2	3.5		11.0 11.0	11.0	
				Bottom	9	26.6 26.6	26.6	7.8 7.9	7.9	35.9 37.0	36.5	91.6 91.5	91.6	6.7 6.7	6.7		3.4 3.2	3.3		8.0 9.0	8.5	

Remarks: \* DA: Depth-Averaged

\*\* Calm: Small or no wave; Moderate: Between calm and rough; Rough : White capped or rougher

### Water Quality Monitoring Results at Intake A - Mid-Flood Tide

Date	Weather Condition	Sea Condition**	Sampling Time	Depth (m)		Water Temperature (°C)		pH		Salinity ppt		DO Saturation (%)		Dissolved Oxygen (mg/L)			Turbidity(NTU)			Suspended Solids (mg/L)		
						Value	Average	Value	Average	Value	Average	Value	Average	Value	Average	DA*	Value	Average	DA*	Value	Average	DA*
1-Jun-09	Sunny	Calm	13:23	Surface	1	26.3 26.3	26.3	7.8 7.8	7.8	36.0 36.1	36.1	94.1 94.0	94.1	6.9 6.9	6.9	6.9	2.6 2.5	2.6	2.8	11.0 12.0	11.5	9.3
				Middle	5	26.3 26.3	26.3	7.9 7.9	7.9	36.0 36.0	36.0	91.7 91.0	91.4	6.8 6.7	6.8	6.8	2.5 2.5	2.5		9.0 9.0	9.0	
				Bottom	9	26.1 25.9	26.0	8.0 8.1	8.1	35.9 35.9	35.9	91.3 90.4	90.9	6.8 6.7	6.8	6.8	3.1 3.2	3.2		7.0 8.0	7.5	
3-Jun-09	Cloudy	Calm	16:12	Surface	1	26.2 26.3	26.3	7.6 7.6	7.6	36.2 36.2	36.2	98.0 96.7	97.4	7.3 7.2	7.3	7.0	2.8 2.7	2.8	2.8	10.0 10.0	10.0	12.2
				Middle	5	26.3 26.3	26.3	7.8 7.7	7.8	36.7 36.7	36.7	89.7 89.7	89.7	6.7 6.7	6.7	6.7	2.8 2.9	2.9		11.0 12.0	11.5	
				Bottom	9	26.3 26.3	26.3	7.7 8.0	7.9	36.7 36.7	36.7	84.4 84.4	84.4	6.3 6.3	6.3	6.3	2.8 2.7	2.8		15.0 15.0	15.0	
5-Jun-09	Fine	Calm	16:57	Surface	1	30.3 30.3	30.3	7.7 7.7	7.7	34.5 34.7	34.6	102.2 101.8	102.0	7.1 7.1	7.1	7.1	5.0 5.0	5.0	5.6	10.0 10.0	10.0	9.0
				Middle	5	30.1 30.0	30.1	8.3 8.0	8.2	35.1 35.1	35.1	101.2 100.8	101.0	7.1 7.1	7.1	7.1	5.6 5.5	5.6		9.0 9.0	9.0	
				Bottom	9	29.8 29.8	29.8	8.0 8.0	8.0	35.3 35.4	35.4	98.5 98.4	98.5	6.9 6.9	6.9	6.9	6.1 6.1	6.1		8.0 8.0	8.0	
8-Jun-09	Cloudy	Moderate	16:45	Surface	1	24.9 24.9	24.9	7.8 7.8	7.8	34.5 33.9	34.2	92.4 89.8	91.1	6.8 6.7	6.8	6.6	2.6 2.7	2.7	2.5	5.0 5.0	5.0	7.3
				Middle	5	24.9 24.9	24.9	8.1 7.9	8.0	33.8 31.8	32.8	85.5 85.5	85.5	6.3 6.3	6.3	6.3	2.4 2.5	2.5		4.0 4.0	4.0	
				Bottom	9	24.6 24.6	24.6	8.1 8.2	8.2	34.5 31.8	33.2	83.1 83.0	83.1	6.2 6.2	6.2	6.2	2.3 2.1	2.2		6.0 6.0	6.0	
10-Jun-09	Cloudy	Calm	08:39	Surface	1	29.3 29.3	29.3	7.6 7.8	7.7	31.4 31.5	31.5	97.3 97.3	97.3	6.8 6.8	6.8	6.5	5.2 5.0	5.1	5.0	4.0 4.0	4.0	6.0
				Middle	5	28.8 28.8	28.8	8.0 7.8	7.9	32.1 32.1	32.1	87.5 87.5	87.5	6.2 6.2	6.2	6.2	5.2 5.1	5.2		6.0 6.0	6.0	
				Bottom	9	28.8 28.8	28.8	8.0 8.2	8.1	32.1 32.2	32.2	87.1 86.7	86.9	6.2 6.2	6.2	6.2	4.7 4.5	4.6		8.0 8.0	8.0	
12-Jun-09	Cloudy	Calm	09:00	Surface	1	26.2 26.3	26.3	7.8 7.8	7.8	35.4 35.4	35.4	99.0 97.7	98.4	7.4 7.3	7.4	7.1	3.8 3.7	3.8	3.8	4.0 4.0	4.0	3.8
				Middle	5	26.3 26.3	26.3	8.1 7.9	8.0	36.0 35.9	36.0	90.8 90.8	90.8	6.8 6.8	6.8	6.8	3.7 3.8	3.8		4.0 3.0	3.5	
				Bottom	9	26.4 26.4	26.4	8.1 8.1	8.1	35.9 35.9	35.9	85.5 85.5	85.5	6.4 6.4	6.4	6.4	3.7 3.6	3.7		4.0 4.0	4.0	
15-Jun-09	Cloudy	Calm	10:15	Surface	1	27.4 27.4	27.4	7.7 7.4	7.6	34.5 34.8	34.7	89.0 89.8	89.4	6.4 6.4	6.4	6.5	3.4 2.8	3.1	2.8	13.0 13.0	13.0	11.2
				Middle	5	27.4 27.4	27.4	7.8 7.5	7.7	34.8 34.6	34.7	92.0 92.2	92.1	6.6 6.6	6.6	6.6	2.9 2.6	2.8		11.0 11.0	11.0	
				Bottom	9	27.4 27.4	27.4	7.9 7.7	7.8	34.9 34.6	34.8	91.4 88.9	90.2	6.5 6.3	6.4	6.4	2.4 2.7	2.6		9.0 10.0	9.5	
17-Jun-09	Sunny	Calm	13:22	Surface	1	29.7 29.7	29.7	7.4 7.6	7.5	38.0 38.1	38.1	88.8 87.3	88.1	6.6 6.5	6.6	6.4	3.7 3.9	3.8	3.6	10.0 10.0	10.0	10.7
				Middle	5	29.6 29.6	29.6	8.1 7.6	7.9	38.7 38.0	38.4	83.6 83.6	83.6	6.2 6.2	6.2	6.2	3.6 3.2	3.4		5.0 5.0	5.0	
				Bottom	9	29.6 29.6	29.6	7.6 8.2	7.9	37.7 38.4	38.1	83.3 84.2	83.8	6.2 6.2	6.2	6.2	3.6 3.4	3.5		17.0 17.0	17.0	
19-Jun-09	Cloudy	Calm	16:13	Surface	1	29.2 29.3	29.3	7.7 7.6	7.7	35.4 36.3	35.9	93.6 93.5	93.6	6.6 6.6	6.6	6.7	3.6 3.7	3.7	3.7	5.0 5.0	5.0	5.8
				Middle	5	28.9 29.0	29.0	8.0 7.7	7.9	36.6 37.0	36.8	94.0 94.6	94.3	6.6 6.7	6.7	6.7	4.2 4.3	4.3		7.0 7.0	7.0	
				Bottom	9	28.9 29.0	29.0	7.9 8.0	8.0	37.3 34.1	35.7	92.5 92.7	92.6	6.5 6.4	6.5	6.5	3.2 3.1	3.2		5.0 6.0	5.5	

Remarks: \* DA: Depth-Averaged

\*\* Calm: Small or no wave; Moderate: Between calm and rough; Rough : White capped or rougher

## Water Quality Monitoring Results at Intake A - Mid-Flood Tide

Date	Weather Condition	Sea Condition**	Sampling Time	Depth (m)		Water Temperature (°C)		pH		Salinity ppt		DO Saturation (%)		Dissolved Oxygen (mg/L)			Turbidity(NTU)			Suspended Solids (mg/L)		
						Value	Average	Value	Average	Value	Average	Value	Average	Value	Average	DA*	Value	Average	DA*	Value	Average	DA*
22-Jun-09	Cloudy	Calm	16:45	Surface	1	28.2 28.1	28.2	8.0 7.9	8.0	33.4 32.8	33.1	91.3 89.2	90.3	6.7 6.6	6.7	6.5	3.2 3.6	3.4	3.2	13.0 12.0	12.5	10.8
				Middle	4.5	28.1 28.1	28.1	8.0 8.0	8.0	32.7 30.8	31.8	82.5 82.9	82.7	6.2 6.2	6.2		3.4 3.2	3.3		10.0 10.0	10.0	
				Bottom	8	28.2 28.1	28.2	8.0 8.1	8.1	33.8 30.8	32.3	85.6 85.6	85.6	6.3 6.3	6.3		3.0 2.9	3.0		10.0 10.0	10.0	
24-Jun-09	Cloudy	Calm	08:44	Surface	1	28.4 28.4	28.4	7.6 7.6	7.6	37.0 35.5	36.3	91.9 90.4	91.2	6.9 6.8	6.9	6.7	3.6 3.9	3.8	3.5	5.0 5.0	5.0	6.2
				Middle	5	28.4 28.3	28.4	7.9 7.6	7.8	37.4 36.0	36.7	86.7 86.7	86.7	6.5 6.5	6.5		3.1 3.2	3.2		6.0 7.0	6.5	
				Bottom	9	28.3 28.3	28.3	7.8 7.8	7.8	36.5 34.5	35.5	87.4 88.3	87.9	6.7 6.6	6.7		3.6 3.4	3.5		7.0 7.0	7.0	
26-Jun-09	Rainy	Calm	08:38	Surface	1	26.3 26.4	26.4	7.7 7.8	7.8	35.2 35.0	35.1	87.6 87.6	87.6	6.4 6.3	6.4	6.4	3.9 3.9	3.9	3.6	6.0 6.0	6.0	5.8
				Middle	5	26.4 26.3	26.4	8.1 7.9	8.0	33.9 34.3	34.1	87.9 87.9	87.9	6.4 6.4	6.4		3.6 3.6	3.6		5.0 6.0	5.5	
				Bottom	9	26.3 26.3	26.3	8.0 8.1	8.1	34.8 34.7	34.8	86.6 86.4	86.5	6.2 6.2	6.2		3.2 3.3	3.3		6.0 6.0	6.0	
29-Jun-09	Cloudy	Calm	11:32	Surface	1	26.6 26.6	26.6	8.1 7.8	8.0	34.2 36.0	35.1	92.2 92.2	92.2	6.8 6.8	6.8	6.8	3.4 3.3	3.4	3.3	14.0 14.0	14.0	11.2
				Middle	5	26.5 26.5	26.5	8.2 7.9	8.1	35.0 35.3	35.2	92.5 92.4	92.5	6.8 6.8	6.8		3.6 3.2	3.4		10.0 10.0	10.0	
				Bottom	9	26.4 26.4	26.4	8.3 8.0	8.2	36.3 36.4	36.4	92.3 92.3	92.3	6.8 6.8	6.8		3.3 3.1	3.2		9.0 10.0	9.5	

Remarks: \* DA: Depth-Averaged

\*\* Calm: Small or no wave; Moderate: Between calm and rough; Rough : White capped or rougher



### Water Quality Monitoring Results at Intake B - Mid-Ebb Tide

Date	Weather Condition	Sea Condition**	Sampling Time	Depth (m)		Water Temperature (°C)		pH		Salinity ppt		DO Saturation (%)		Dissolved Oxygen (mg/L)			Turbidity (NTU)			Suspended Solids (mg/L)		
						Value	Average	Value	Average	Value	Average	Value	Average	Value	Average	DA*	Value	Average	DA*	Value	Average	DA*
1-Jun-09	Sunny	Calm	09:11	Surface	1	25.0 25.0	25.0	7.8 8.0	7.9	35.9 36.0	36.0	86.9 86.9	86.9	6.4 6.4	6.4	6.4	2.3 2.3	2.3	2.6	15.0 14.0	14.5	10.8
				Middle	6	24.5 24.5	24.5	8.1 7.9	8.0	36.0 36.0	36.0	85.0 85.0	85.0	6.3 6.3	6.3		2.3 2.2	2.3		13.0 13.0	13.0	
				Bottom	11	24.3 24.3	24.3	7.9 8.0	8.0	36.1 36.1	36.1	84.3 84.3	84.3	6.2 6.2	6.2		3.0 3.3	3.2		5.0 5.0	5.0	
3-Jun-09	Cloudy	Calm	10:38	Surface	1	23.4 24.0	23.7	7.8 7.7	7.8	37.3 36.8	37.1	106.8 107.0	106.9	8.1 8.1	8.1	7.7	1.2 1.4	1.3	1.9	7.0 8.0	7.5	9.8
				Middle	6	24.4 24.5	24.5	7.9 7.9	7.9	37.0 37.0	37.0	96.3 95.2	95.8	7.2 7.1	7.2		1.9 1.9	1.9		10.0 10.0	10.0	
				Bottom	11	24.5 24.5	24.5	7.8 7.9	7.9	37.0 37.0	37.0	89.4 89.0	89.2	6.7 6.7	6.7		2.4 2.4	2.4		12.0 12.0	12.0	
5-Jun-09	Sunny	Calm	11:49	Surface	1	30.3 30.3	30.3	7.6 8.2	7.9	35.3 35.3	35.3	101.1 100.2	100.7	7.0 7.0	7.0	6.9	4.7 5.3	5.0	5.6	10.0 10.0	10.0	9.2
				Middle	6	29.8 29.8	29.8	8.3 8.5	8.4	35.8 35.8	35.8	97.7 97.7	97.7	6.8 6.8	6.8		5.9 5.9	5.9		7.0 8.0	7.5	
				Bottom	11	29.8 29.8	29.8	8.1 8.4	8.3	35.8 35.8	35.8	96.4 96.6	96.5	6.7 6.7	6.7		6.0 5.9	6.0		10.0 10.0	10.0	
8-Jun-09	Cloudy	Moderate	12:40	Surface	1	26.5 26.4	26.5	7.7 7.8	7.8	36.0 36.1	36.1	87.8 87.5	87.7	6.6 6.5	6.6	6.5	4.3 4.4	4.4	3.7	4.0 4.0	4.0	7.0
				Middle	5.5	26.4 26.4	26.4	7.9 7.9	7.9	32.7 32.4	32.6	86.8 86.8	86.8	6.4 6.4	6.4		3.4 3.3	3.4		6.0 7.0	6.5	
				Bottom	10	26.3 26.3	26.3	8.0 8.1	8.1	35.3 35.7	35.5	84.6 84.9	84.8	6.2 6.3	6.3		3.4 3.2	3.3		10.0 11.0	10.5	
10-Jun-09	Cloudy	Calm	13:58	Surface	1	28.8 28.8	28.8	7.7 7.8	7.8	31.9 31.9	31.9	92.8 92.8	92.8	6.6 6.6	6.6	6.4	4.9 4.5	4.7	5.1	5.0 5.0	5.0	7.2
				Middle	6	28.7 28.7	28.7	8.0 7.9	8.0	32.2 32.2	32.2	87.4 87.0	87.2	6.2 6.2	6.2		4.4 4.5	4.5		9.0 9.0	9.0	
				Bottom	11	28.6 28.6	28.6	7.9 7.9	7.9	32.9 32.8	32.9	86.4 85.3	85.9	6.2 6.1	6.2		5.6 6.8	6.2		7.0 8.0	7.5	
12-Jun-09	Cloudy	Calm	15:22	Surface	1	24.5 25.1	24.8	7.9 8.1	8.0	36.5 36.0	36.3	107.7 107.9	107.8	8.2 8.1	8.2	7.8	2.5 2.6	2.6	3.0	4.0 4.0	4.0	3.7
				Middle	5.5	25.6 25.6	25.6	8.1 8.2	8.2	36.2 36.2	36.2	97.3 96.2	96.8	7.3 7.2	7.3		3.0 3.0	3.0		4.0 4.0	4.0	
				Bottom	10	25.6 25.6	25.6	8.0 8.2	8.1	36.2 36.1	36.2	90.5 90.1	90.3	6.8 6.8	6.8		3.4 3.4	3.4		3.0 3.0	3.0	
15-Jun-09	Cloudy	Calm	16:32	Surface	1	26.4 26.4	26.4	7.4 7.4	7.4	34.8 34.7	34.8	91.5 91.5	91.5	6.5 6.5	6.5	6.5	2.7 2.7	2.7	2.5	9.0 9.0	9.0	11.0
				Middle	6	26.4 26.4	26.4	7.4 7.5	7.5	33.9 34.8	34.4	91.3 91.3	91.3	6.5 6.5	6.5		2.7 2.3	2.5		11.0 11.0	11.0	
				Bottom	11	26.4 26.4	26.4	7.4 7.6	7.5	31.1 32.9	32.0	91.0 90.8	90.9	6.5 6.5	6.5		2.3 2.2	2.3		13.0 13.0	13.0	
17-Jun-09	Sunny	Calm	08:32	Surface	1	28.3 28.3	28.3	7.8 7.9	7.9	37.9 37.9	37.9	93.7 92.9	93.3	6.9 6.8	6.9	6.8	4.1 4.1	4.1	3.8	5.0 5.0	5.0	9.2
				Middle	6	28.3 28.2	28.3	7.8 7.8	7.8	37.2 37.8	37.5	90.6 90.3	90.5	6.7 6.6	6.7		3.7 3.6	3.7		16.0 16.0	16.0	
				Bottom	11	28.2 28.2	28.2	7.8 7.9	7.9	34.8 38.3	36.6	89.9 89.8	89.9	6.6 6.6	6.6		3.6 3.3	3.5		6.0 7.0	6.5	
19-Jun-09	Cloudy	Calm	09:48	Surface	1	28.3 28.2	28.3	7.7 7.7	7.7	38.0 37.6	37.8	95.6 94.8	95.2	6.6 6.5	6.6	6.6	4.1 3.9	4.0	3.6	9.0 9.0	9.0	7.2
				Middle	6	28.2 28.2	28.2	7.8 8.0	7.9	37.6 37.6	37.6	94.3 94.1	94.2	6.6 6.6	6.6		3.6 3.4	3.5		8.0 8.0	8.0	
				Bottom	11	28.0 28.0	28.0	7.8 7.9	7.9	37.5 37.2	37.4	93.1 93.1	93.1	6.5 6.5	6.5		3.2 3.4	3.3		4.0 5.0	4.5	

Remarks: \* DA: Depth-Averaged

\*\* Calm: Small or no wave; Moderate: Between calm and rough; Rough: White capped or rougher

### Water Quality Monitoring Results at Intake B - Mid-Ebb Tide

Date	Weather Condition	Sea Condition**	Sampling Time	Depth (m)		Water Temperature (°C)		pH		Salinity ppt		DO Saturation (%)		Dissolved Oxygen (mg/L)			Turbidity (NTU)			Suspended Solids (mg/L)		
						Value	Average	Value	Average	Value	Average	Value	Average	Value	Average	DA*	Value	Average	DA*	Value	Average	DA*
22-Jun-09	Cloudy	Calm	12:02	Surface	1	28.0 28.0	28.0	7.7 7.7	7.7	33.9 34.0	34.0	85.9 85.6	85.8	6.5 6.4	6.5	6.4	3.9 3.4	3.7	3.5	10.0 10.0	10.0	9.5
				Middle	6	27.9 27.9	27.9	8.0 7.9	8.0	34.4 34.7	34.6	84.9 84.9	84.9	6.3 6.3	6.3		3.5 3.2	3.4		11.0 11.0	11.0	
				Bottom	11	27.9 27.9	27.9	7.9 8.1	8.0	33.5 34.1	33.8	85.7 86.0	85.9	6.4 6.5	6.5		3.2 3.3	3.3		7.0 8.0	7.5	
24-Jun-09	Cloudy	Calm	13:56	Surface	1	29.1 29.0	29.1	7.5 7.4	7.5	37.0 36.3	36.7	94.5 92.4	93.5	7.1 6.9	7.0	6.8	3.2 3.6	3.4	2.9	5.0 5.0	5.0	6.2
				Middle	6	29.1 29.0	29.1	7.5 7.7	7.6	35.8 35.4	35.6	85.8 86.2	86.0	6.6 6.6	6.6		3.1 2.8	3.0		7.0 7.0	7.0	
				Bottom	11	29.0 29.0	29.0	7.5 7.6	7.6	33.5 36.1	34.8	88.9 88.9	88.9	6.7 6.6	6.7		2.1 2.3	2.2		6.0 7.0	6.5	
26-Jun-09	Rainy	Calm	15:41	Surface	1	25.8 25.7	25.8	7.7 7.9	7.8	35.6 33.7	34.7	88.5 88.6	88.6	6.4 6.4	6.4	6.4	3.4 3.4	3.4	3.3	4.0 4.0	4.0	5.7
				Middle	6	25.7 25.7	25.7	8.0 8.0	8.0	34.8 35.9	35.4	88.5 88.4	88.5	6.4 6.4	6.4		3.2 3.6	3.4		6.0 6.0	6.0	
				Bottom	11	25.7 25.7	25.7	8.0 8.2	8.1	35.8 35.2	35.5	87.4 87.2	87.3	6.3 6.3	6.3		3.2 3.1	3.2		7.0 7.0	7.0	
29-Jun-09	Cloudy	Calm	17:00	Surface	1	26.8 26.8	26.8	7.7 7.7	7.7	36.0 35.9	36.0	87.5 93.9	90.7	6.5 7.0	6.8	6.9	3.2 3.6	3.4	3.4	10.0 10.0	10.0	9.7
				Middle	6	26.7 26.6	26.7	7.8 7.9	7.9	33.7 36.2	35.0	93.4 93.3	93.4	6.9 6.8	6.9		3.5 3.6	3.6		9.0 9.0	9.0	
				Bottom	11	26.6 26.6	26.6	7.7 7.9	7.8	35.5 35.7	35.6	93.0 92.9	93.0	6.9 6.9	6.9		3.2 3.1	3.2		10.0 10.0	10.0	

Remarks: \* DA: Depth-Averaged

\*\* Calm: Small or no wave; Moderate: Between calm and rough; Rough : White capped or rougher

## Water Quality Monitoring Results at Intake B - Mid-Flood Tide

Date	Weather Condition	Sea Condition**	Sampling Time	Depth (m)		Water Temperature (°C)		pH		Salinity ppt		DO Saturation (%)		Dissolved Oxygen (mg/L)			Turbidity (NTU)			Suspended Solids (mg/L)		
						Value	Average	Value	Average	Value	Average	Value	Average	Value	Average	DA*	Value	Average	DA*	Value	Average	DA*
1-Jun-09	Sunny	Calm	13:55	Surface	1	26.6 26.6	26.6	8.2 8.0	8.1	35.9 35.9	35.9	100.2 99.8	100.0	7.3 7.3	7.3	7.3	2.6 2.6	2.6	3.0	8.0 8.0	8.0	9.3
				Middle	6	26.0 26.0	26.0	7.9 7.8	7.9	35.9 36.0	36.0	97.9 97.7	97.8	7.2 7.2	7.2		2.9 2.9	2.9		10.0 10.0	10.0	
				Bottom	11	25.8 25.8	25.8	7.9 7.8	7.9	35.9 35.8	35.9	96.2 96.2	96.2	7.1 7.1	7.1		3.4 3.5	3.5		10.0 10.0	10.0	
3-Jun-09	Cloudy	Calm	16:43	Surface	1	26.3 26.3	26.3	8.0 7.8	7.9	36.2 36.3	36.3	94.3 94.3	94.3	7.1 7.1	7.1	6.9	2.2 2.1	2.2	2.1	10.0 10.0	10.0	12.5
				Middle	6	26.3 26.3	26.3	7.8 7.7	7.8	36.9 36.8	36.9	90.0 89.8	89.9	6.7 6.7	6.7		1.8 2.0	1.9		13.0 13.0	13.0	
				Bottom	11	26.3 26.3	26.3	7.7 7.7	7.7	36.9 36.9	36.9	85.9 85.7	85.8	6.4 6.4	6.4		2.1 2.1	2.1		14.0 15.0	14.5	
5-Jun-09	Fine	Calm	16:29	Surface	1	30.3 30.2	30.3	7.8 7.7	7.8	34.7 34.7	34.7	101.8 101.7	101.8	7.1 7.1	7.1	7.1	4.8 4.8	4.8	5.6	11.0 10.0	10.5	10.3
				Middle	6	29.9 29.9	29.9	7.6 8.3	8.0	35.8 35.8	35.8	100.0 100.0	100.0	7.0 7.0	7.0		6.0 6.3	6.2		5.0 6.0	5.5	
				Bottom	11	29.7 29.7	29.7	8.0 8.3	8.2	36.1 36.1	36.1	98.8 98.2	98.5	6.9 6.9	6.9		5.6 5.7	5.7		15.0 15.0	15.0	
8-Jun-09	Cloudy	Moderate	17:01	Surface	1	24.9 24.9	24.9	8.2 8.0	8.1	32.1 34.7	33.4	88.8 86.7	87.8	6.5 6.3	6.4	6.4	3.8 3.9	3.9	3.4	3.0 4.0	3.5	7.0
				Middle	6	24.8 24.6	24.7	8.1 8.0	8.1	34.4 34.4	34.4	84.7 85.1	84.9	6.3 6.3	6.3		3.4 3.3	3.4		9.0 9.0	9.0	
				Bottom	11	24.6 24.6	24.6	7.8 8.0	7.9	32.2 32.5	32.4	87.5 87.5	87.5	6.4 6.4	6.4		3.3 2.7	3.0		10.0 10.0	10.0	
10-Jun-09	Cloudy	Calm	09:05	Surface	1	28.8 28.8	28.8	8.3 8.1	8.2	31.8 31.9	31.9	95.3 95.3	95.3	6.7 6.7	6.7	6.4	4.5 4.8	4.7	5.2	8.0 8.0	8.0	7.2
				Middle	6	28.8 28.7	28.8	8.0 7.7	7.9	32.2 32.2	32.2	86.0 84.8	85.4	6.0 6.0	6.0		5.4 5.8	5.6		5.0 6.0	5.5	
				Bottom	11	28.6 28.6	28.6	7.8 7.7	7.8	33.1 33.1	33.1	87.5 86.9	87.2	6.3 6.2	6.3		5.2 5.4	5.3		8.0 8.0	8.0	
12-Jun-09	Cloudy	Calm	09:17	Surface	1	26.3 26.3	26.3	8.0 7.9	8.0	35.5 35.5	35.5	95.3 95.3	95.3	7.2 7.2	7.2	7.0	3.2 3.1	3.2	3.1	4.0 4.0	4.0	3.5
				Middle	5.5	26.3 26.3	26.3	7.9 8.0	8.0	36.7 36.7	36.7	91.1 90.9	91.0	6.8 6.8	6.8		2.9 3.1	3.0		4.0 3.0	3.5	
				Bottom	10	26.3 26.3	26.3	8.0 8.1	8.1	36.1 36.1	36.1	87.0 86.8	86.9	6.5 6.5	6.5		3.2 3.2	3.2		3.0 3.0	3.0	
15-Jun-09	Cloudy	Calm	10:26	Surface	1	27.6 27.6	27.6	7.5 7.6	7.6	33.8 32.8	33.3	94.5 95.1	94.8	6.7 6.8	6.8	6.9	2.3 2.6	2.5	2.6	11.0 11.0	11.0	11.3
				Middle	6	27.6 27.6	27.6	7.7 7.4	7.6	34.8 31.7	33.3	96.2 96.2	96.2	6.9 6.8	6.9		3.2 2.8	3.0		11.0 11.0	11.0	
				Bottom	11	27.6 27.6	27.6	7.4 7.8	7.6	32.6 34.1	33.4	95.4 95.1	95.3	6.8 6.8	6.8		2.5 2.2	2.4		12.0 12.0	12.0	
17-Jun-09	Sunny	Calm	13:37	Surface	1	29.7 29.7	29.7	8.4 8.3	8.4	37.9 37.9	37.9	90.4 90.3	90.4	6.7 6.7	6.7	6.7	4.1 4.1	4.1	3.3	3.0 4.0	3.5	9.2
				Middle	6	29.6 29.5	29.6	7.9 7.7	7.8	34.2 34.3	34.3	90.3 90.3	90.3	6.7 6.7	6.7		3.3 3.2	3.3		13.0 13.0	13.0	
				Bottom	11	29.5 29.5	29.5	7.7 7.6	7.7	37.9 38.2	38.1	89.2 89.2	89.2	6.6 6.6	6.6		2.4 2.6	2.5		11.0 11.0	11.0	
19-Jun-09	Cloudy	Calm	16:25	Surface	1	29.0 29.2	29.1	7.9 7.8	7.9	35.2 35.2	35.2	93.3 93.3	93.3	6.6 6.6	6.6	6.6	3.3 3.8	3.6	3.5	4.0 4.0	4.0	5.8
				Middle	6	28.9 28.8	28.9	7.8 7.8	7.8	37.2 37.7	37.5	93.3 93.6	93.5	6.5 6.6	6.6		3.3 3.4	3.4		6.0 7.0	6.5	
				Bottom	11	28.7 28.7	28.7	7.7 7.9	7.8	34.0 37.0	35.5	91.1 90.9	91.0	6.3 6.3	6.3		3.3 3.4	3.4		7.0 7.0	7.0	

Remarks: \* DA: Depth-Averaged

\*\* Calm: Small or no wave; Moderate: Between calm and rough; Rough: White capped or rougher

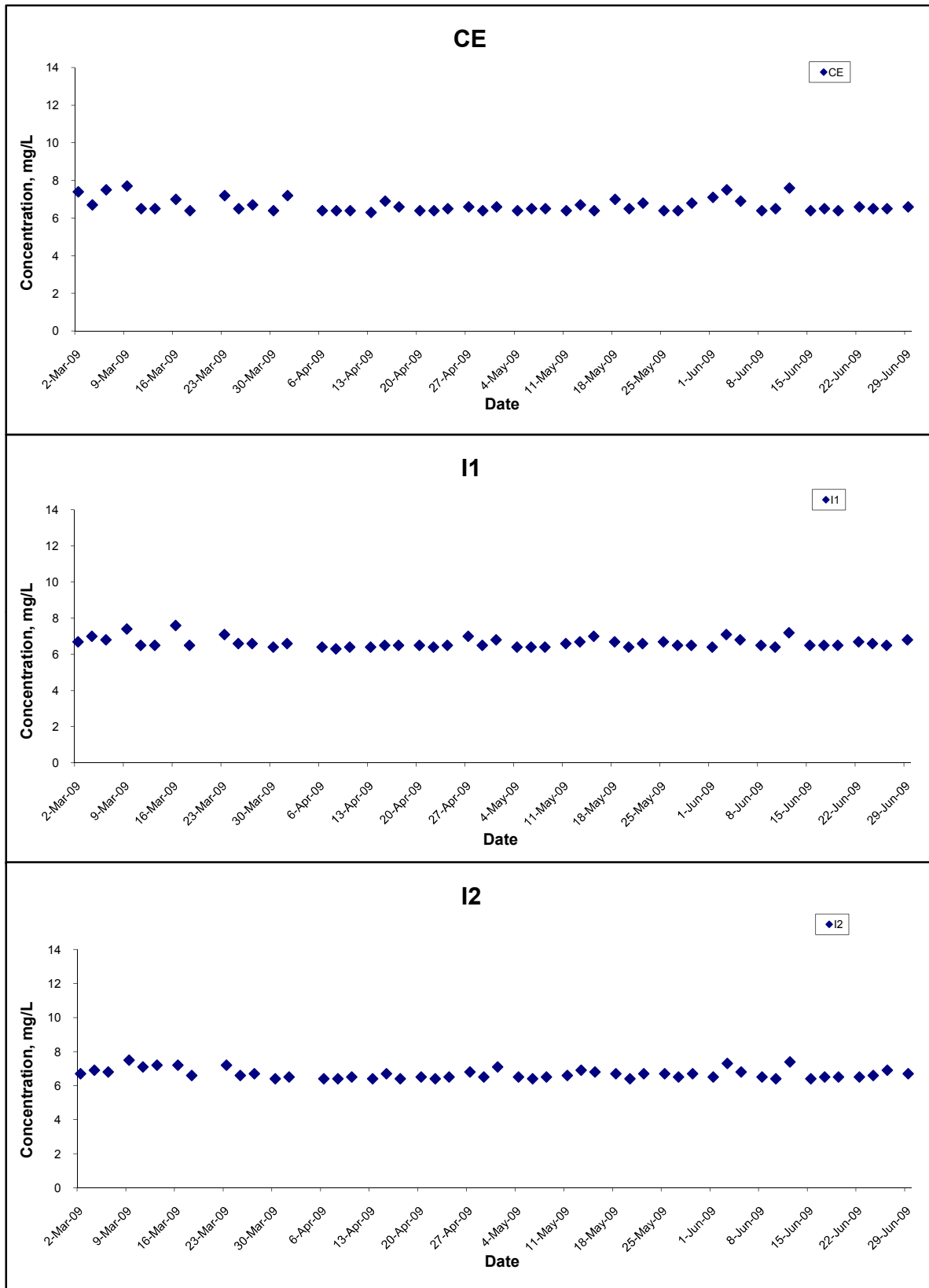
## Water Quality Monitoring Results at Intake B - Mid-Flood Tide

Date	Weather Condition	Sea Condition**	Sampling Time	Depth (m)		Water Temperature (°C)		pH		Salinity ppt		DO Saturation (%)		Dissolved Oxygen (mg/L)			Turbidity(NTU)			Suspended Solids (mg/L)		
						Value	Average	Value	Average	Value	Average	Value	Average	Value	Average	DA*	Value	Average	DA*	Value	Average	DA*
22-Jun-09	Cloudy	Calm	17:02	Surface	1	28.1 28.1	28.1	8.1 8.0	8.1	31.8 33.5	32.7	95.5 94.7	95.1	7.0 7.0	7.0	6.9	3.3 3.6	3.5	3.0	7.0 7.0	7.0	8.2
				Middle	6	28.2 28.2	28.2	8.1 8.0	8.1	33.5 33.8	33.7	92.4 92.1	92.3	6.8 6.8	6.8		3.2 2.7	3.0		7.0 8.0	7.5	
				Bottom	11	28.1 28.1	28.1	7.8 8.0	7.9	31.6 31.5	31.6	91.7 91.6	91.7	6.8 6.7	6.8		2.3 2.6	2.5		10.0 10.0	10.0	
24-Jun-09	Cloudy	Calm	08:56	Surface	1	28.6 28.6	28.6	7.7 7.7	7.7	34.9 35.4	35.2	97.8 97.0	97.4	7.3 7.2	7.3	7.2	3.8 3.6	3.7	3.4	5.0 5.0	5.0	6.7
				Middle	6	28.3 28.3	28.3	7.8 7.6	7.7	35.7 35.1	35.4	94.8 94.5	94.7	7.1 7.1	7.1		3.2 3.3	3.3		6.0 6.0	6.0	
				Bottom	11	28.3 28.3	28.3	7.5 7.9	7.7	35.2 34.5	34.9	94.1 94.0	94.1	7.0 7.0	7.0		3.2 3.1	3.2		9.0 9.0	9.0	
26-Jun-09	Rainy	Calm	08:49	Surface	1	26.4 26.3	26.4	8.0 7.9	8.0	33.7 34.8	34.3	89.4 89.4	89.4	6.5 6.4	6.5	6.5	3.4 3.2	3.3	3.3	5.0 6.0	5.5	5.8
				Middle	6	26.4 26.3	26.4	7.9 8.0	8.0	34.6 34.0	34.3	89.3 88.8	89.1	6.4 6.4	6.4		3.3 3.6	3.5		6.0 6.0	6.0	
				Bottom	11	26.4 26.3	26.4	7.9 8.1	8.0	33.8 33.4	33.6	88.1 87.9	88.0	6.4 6.3	6.4		3.1 3.3	3.2		6.0 6.0	6.0	
29-Jun-09	Cloudy	Calm	11:48	Surface	1	26.7 26.7	26.7	7.8 7.9	7.9	35.1 35.4	35.3	92.5 92.1	92.3	6.8 6.7	6.8	6.8	3.6 3.4	3.5	3.4	10.0 10.0	10.0	11.0
				Middle	6	26.4 26.5	26.5	8.2 7.8	8.0	33.7 36.3	35.0	91.2 90.9	91.1	6.7 6.7	6.7		3.2 3.5	3.4		12.0 12.0	12.0	
				Bottom	11	26.4 26.4	26.4	7.7 8.2	8.0	34.5 33.8	34.2	90.2 90.1	90.2	6.6 6.6	6.6		3.1 3.3	3.2		11.0 11.0	11.0	

Remarks: \* DA: Depth-Averaged

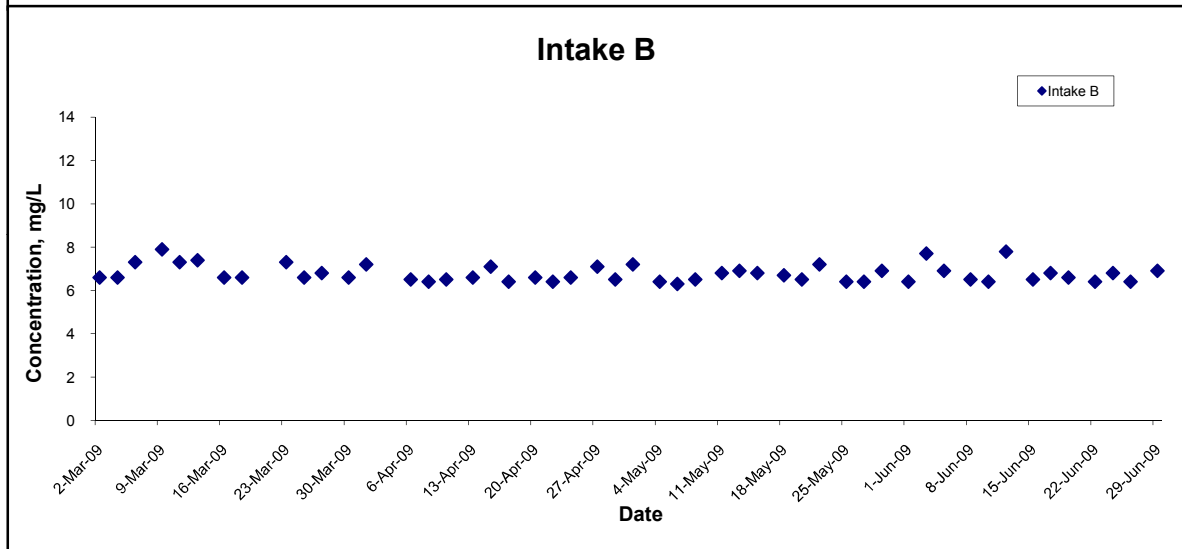
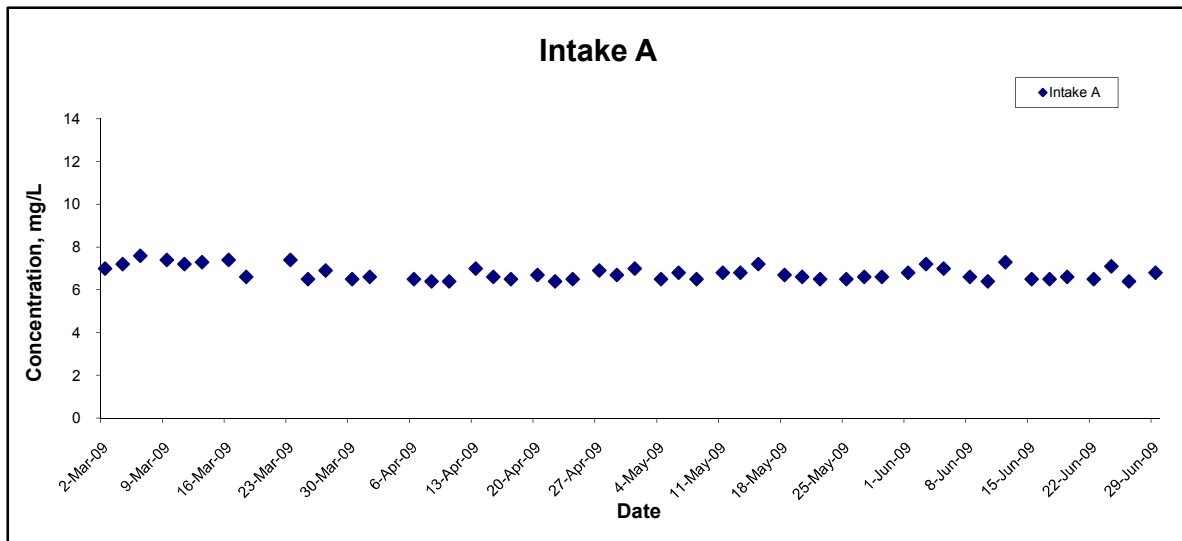
\*\* Calm: Small or no wave; Moderate: Between calm and rough; Rough : White capped or rougher

## Dissolved Oxygen (Surface & Middle) at Mid-Ebb Tide



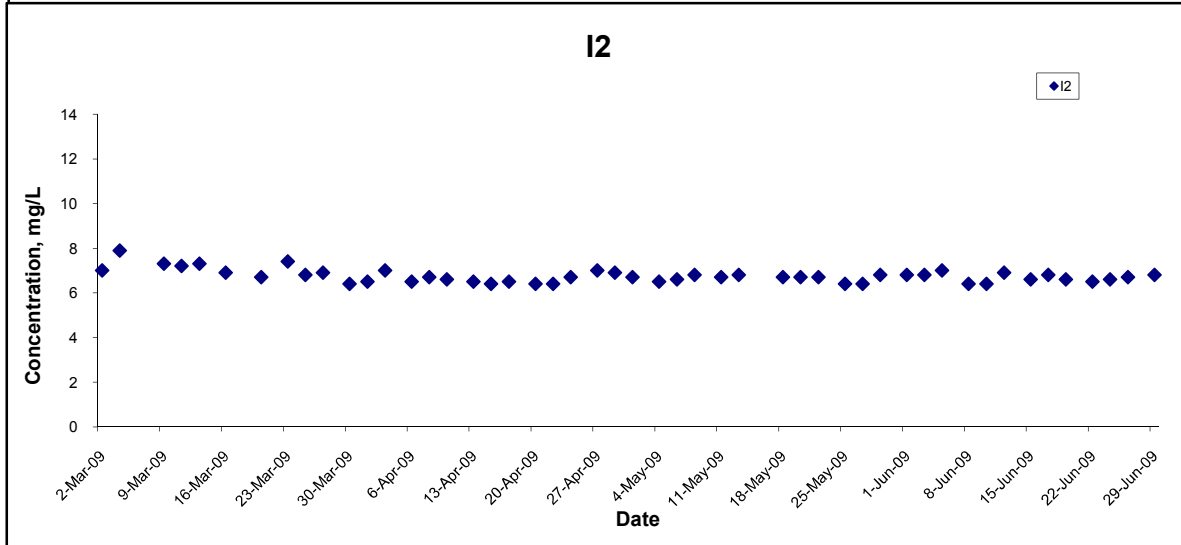
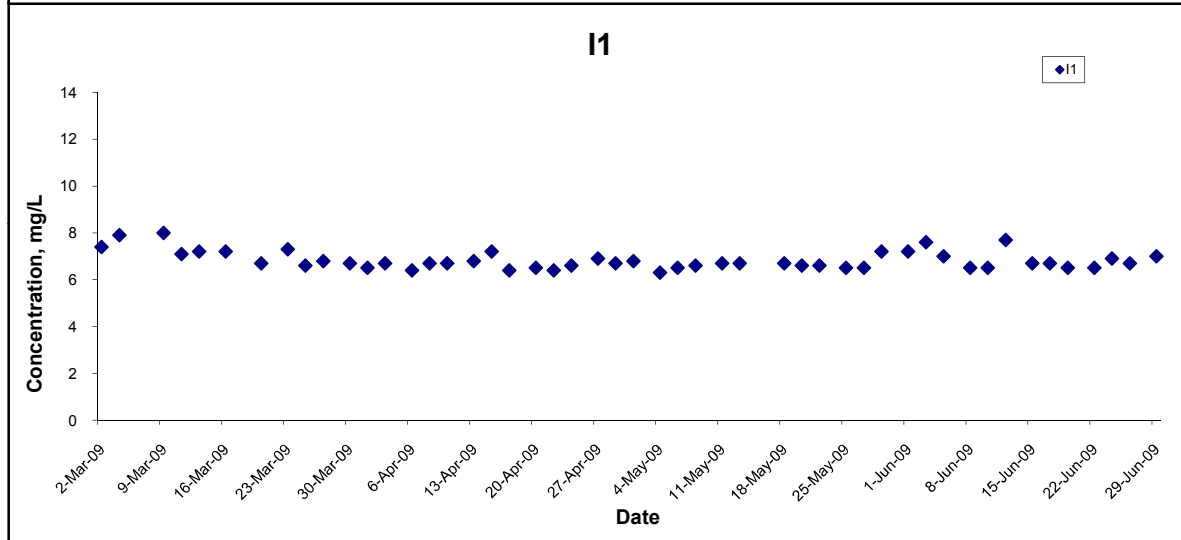
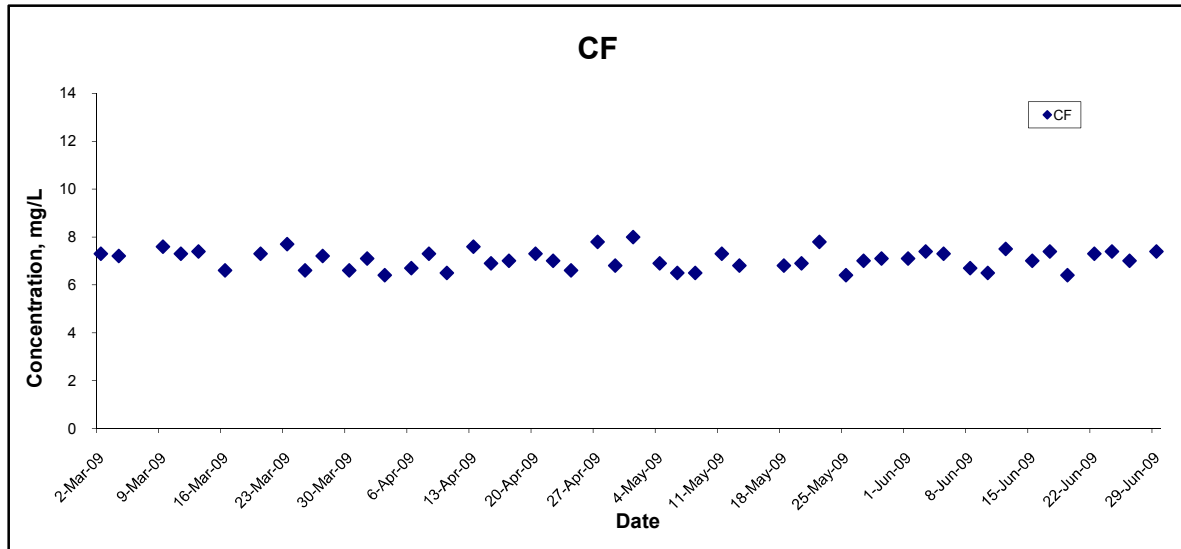
Title Contract No. DC/2007/10 Design and Construction of Hong Kong West Drainage Tunnel  Graphical Presentation of Water Quality Monitoring Results	Scale N.T.S	Project No. MA8001	CINOTECH
	Date Jun 09	Appendix H	

## Dissolved Oxygen (Surface & Middle) at Mid-Ebb Tide



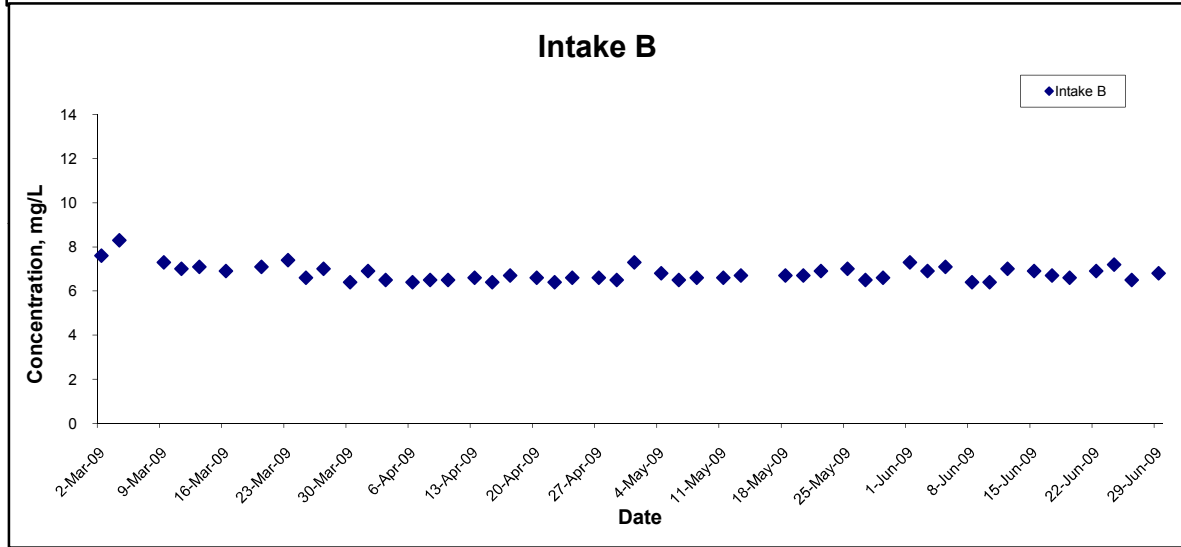
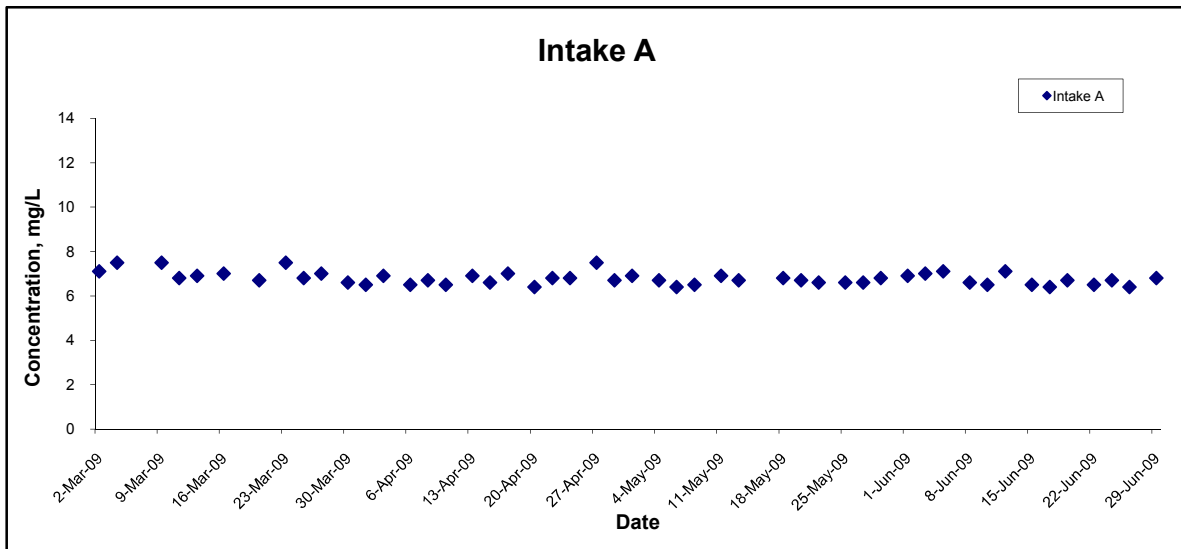
Title Contract No. DC/2007/10 Design and Construction of Hong Kong West Drainage Tunnel  Graphical Presentation of Water Quality Monitoring Results	Scale N.T.S	Project No. MA8001	
	Date Jun 09	Appendix H	

## Dissolved Oxygen (Surface & Middle) at Mid-Flood Tide



Title Contract No. DC/2007/10 Design and Construction of Hong Kong West Drainage Tunnel  Graphical Presentation of Water Quality Monitoring Results	Scale N.T.S	Project No. MA8001	
	Date Jun 09	Appendix H	

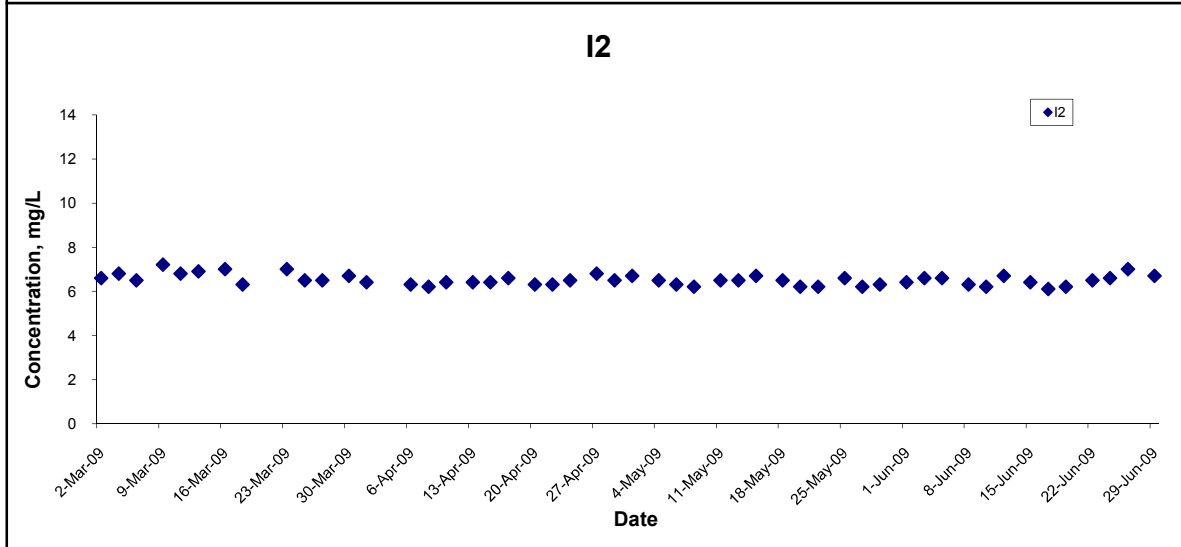
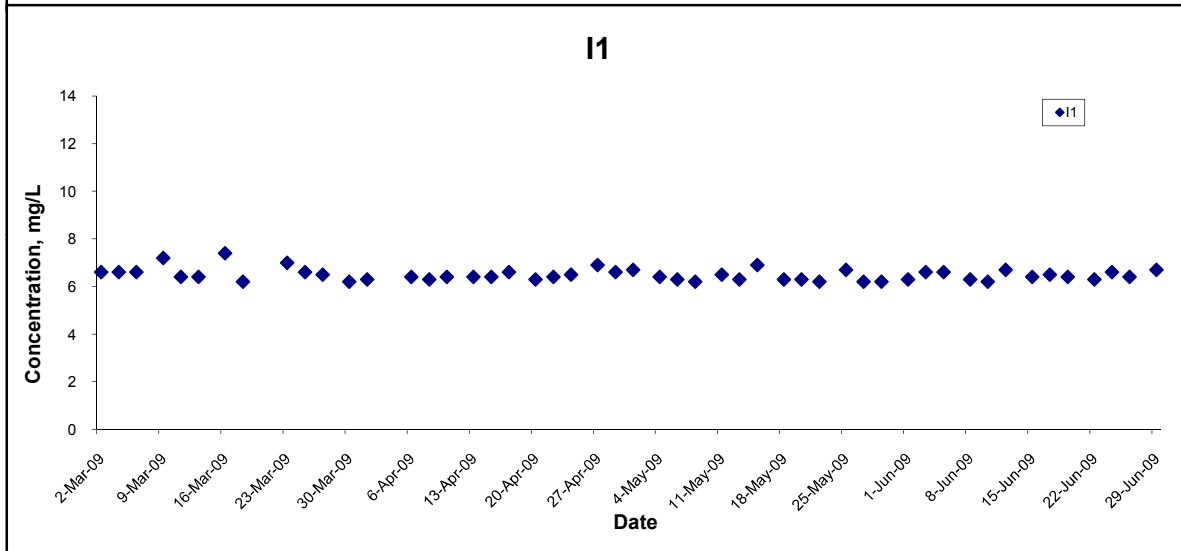
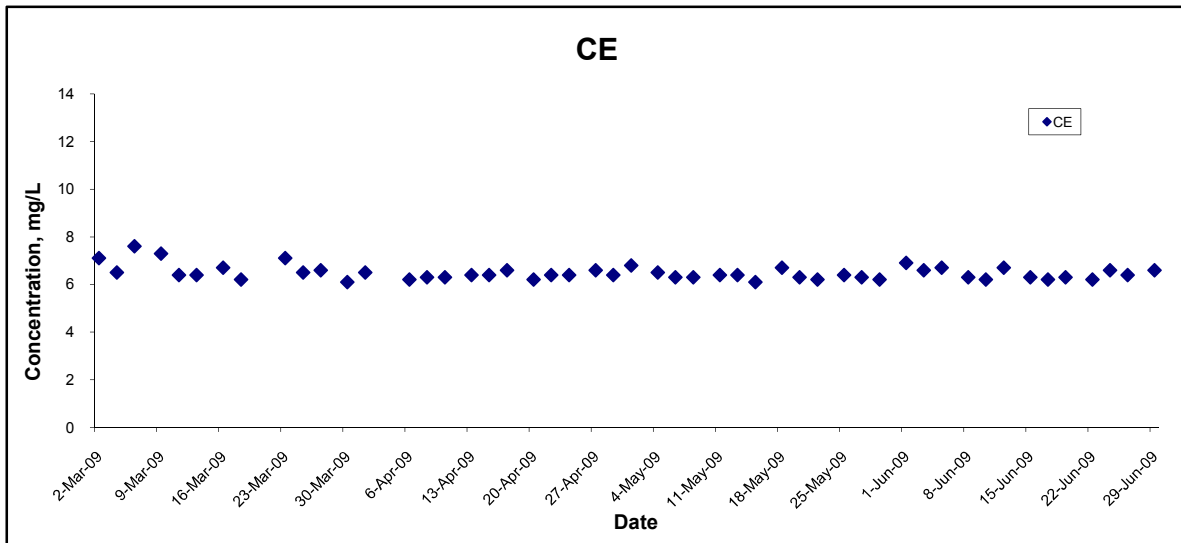
## Dissolved Oxygen (Surface & Middle) at Mid-Flood Tide



Title Contract No. DC/2007/10 Design and Construction of Hong Kong West Drainage Tunnel  Graphical Presentation of Water Quality Monitoring Results	Scale N.T.S	Project No. MA8001	
	Date Jun 09	Appendix H	

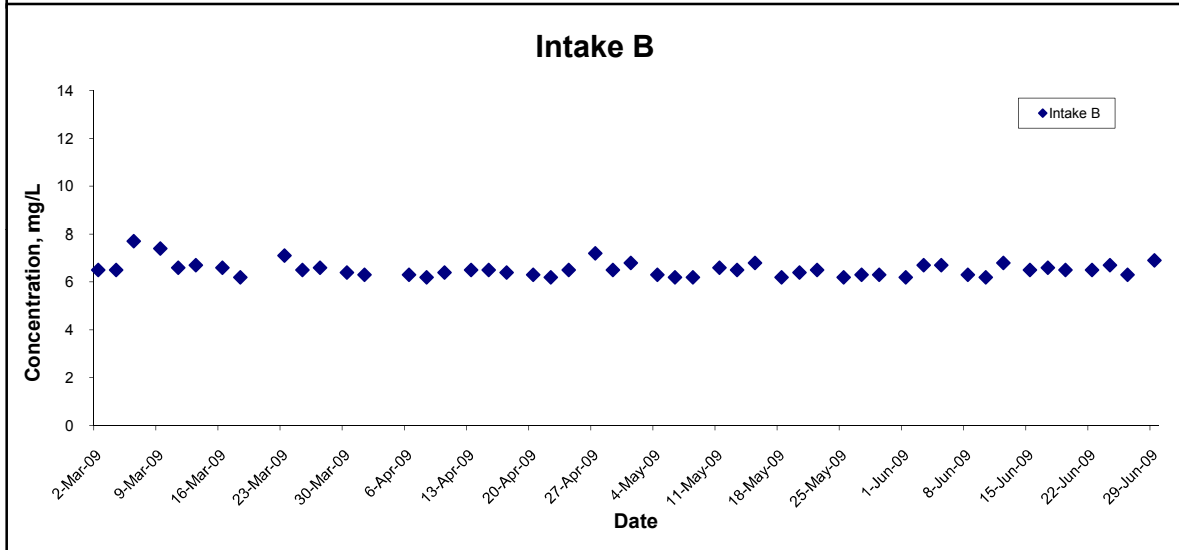
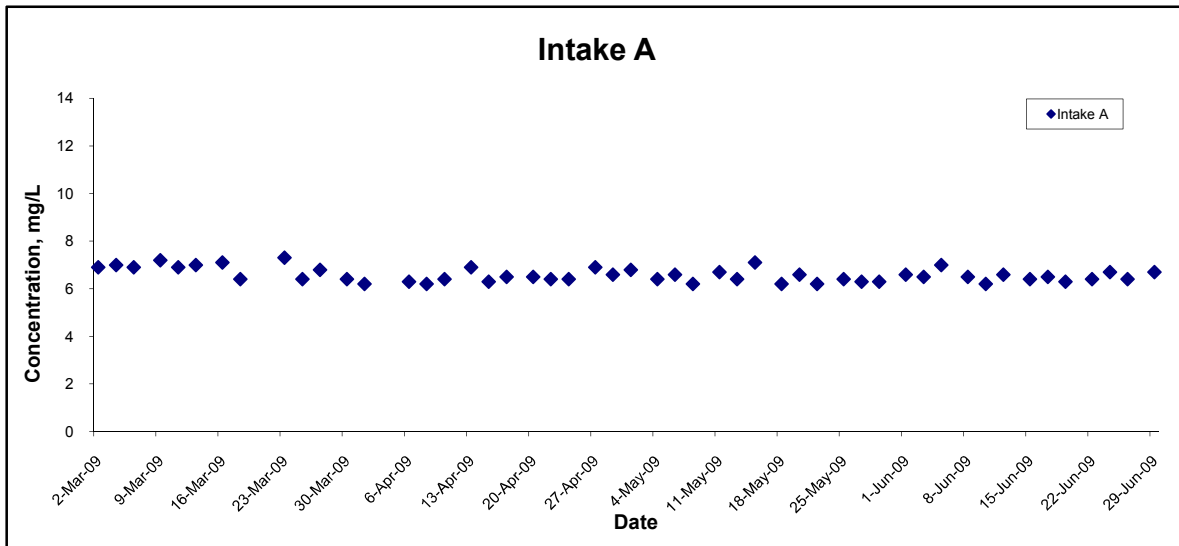


### Dissolved Oxygen (Bottom) at Mid-Ebb Tide



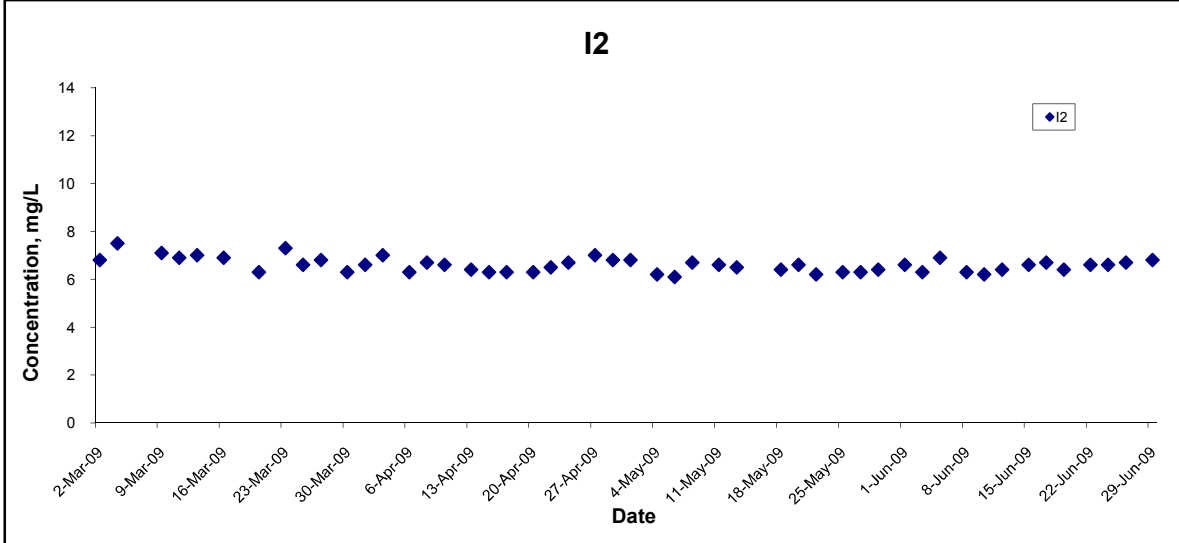
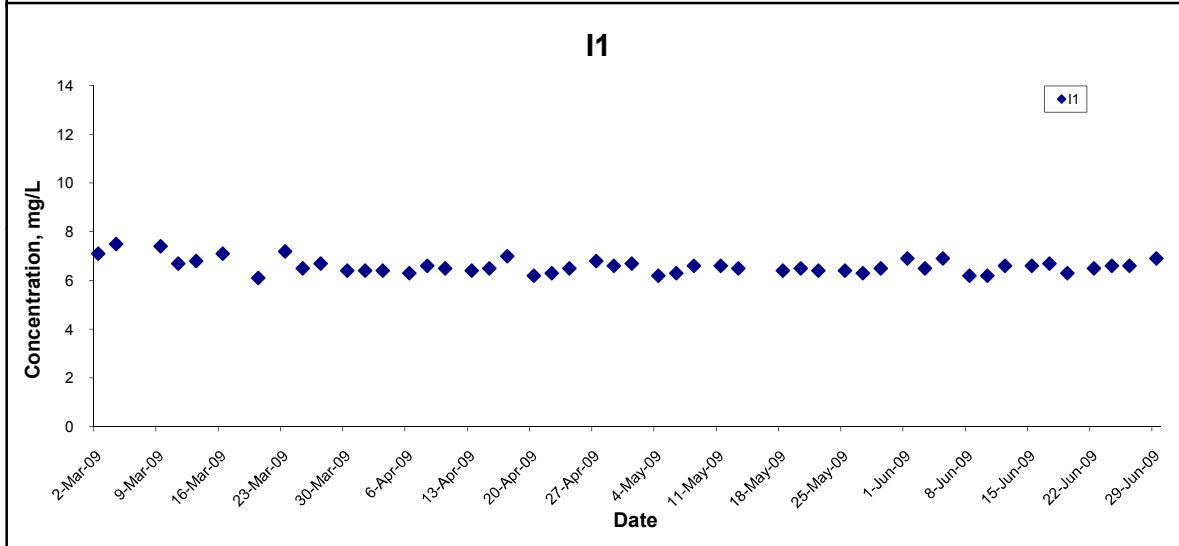
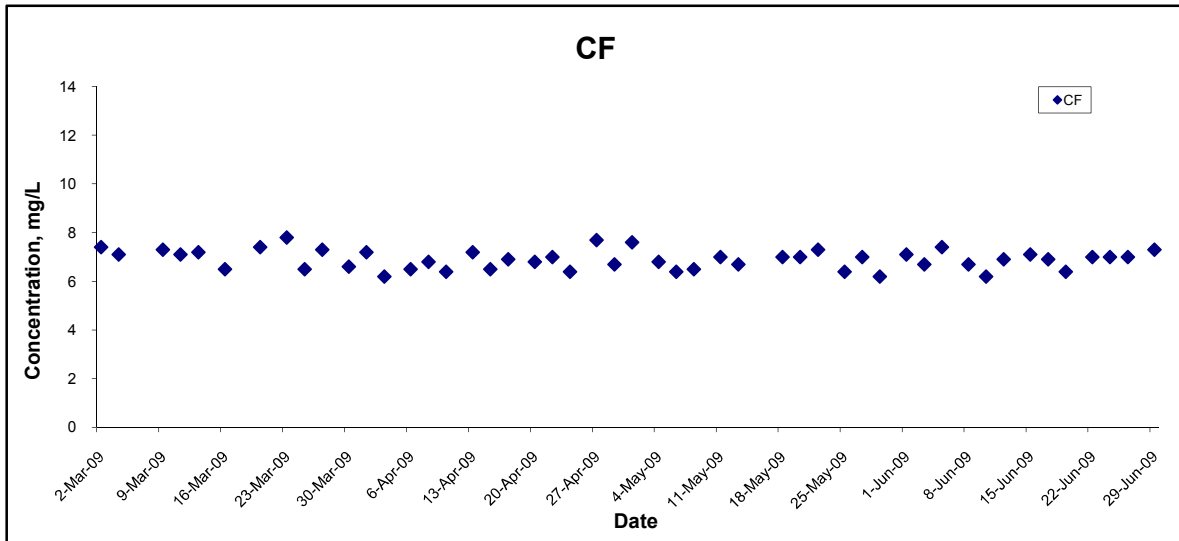
Title Contract No. DC/2007/10 Design and Construction of Hong Kong West Drainage Tunnel  Graphical Presentation of Water Quality Monitoring Results	Scale N.T.S	Project No. MA8001	
	Date Jun 09	Appendix H	

## Dissolved Oxygen (Bottom) at Mid-Ebb Tide



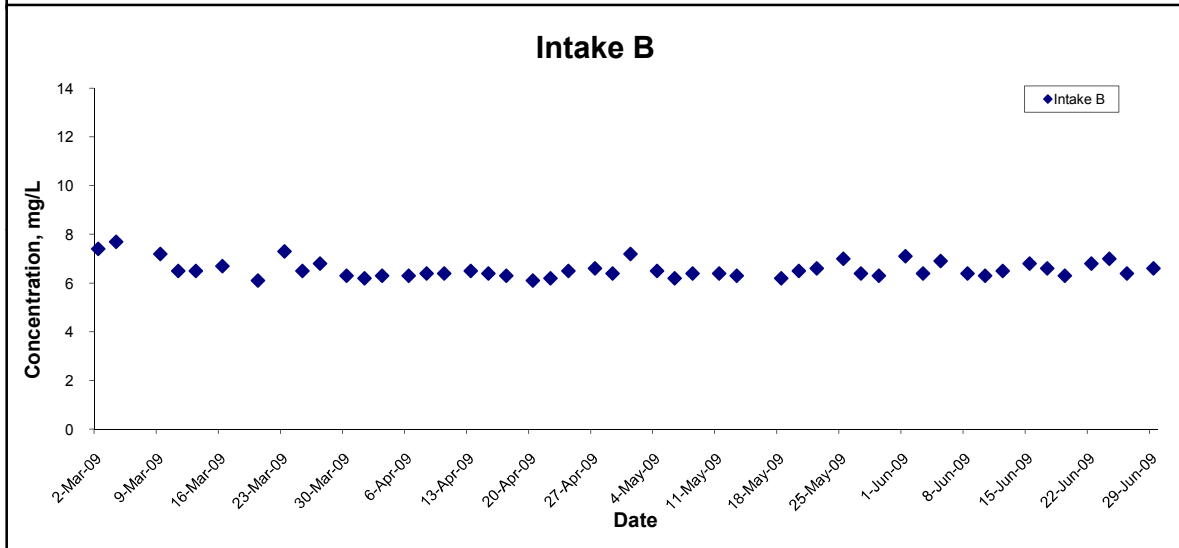
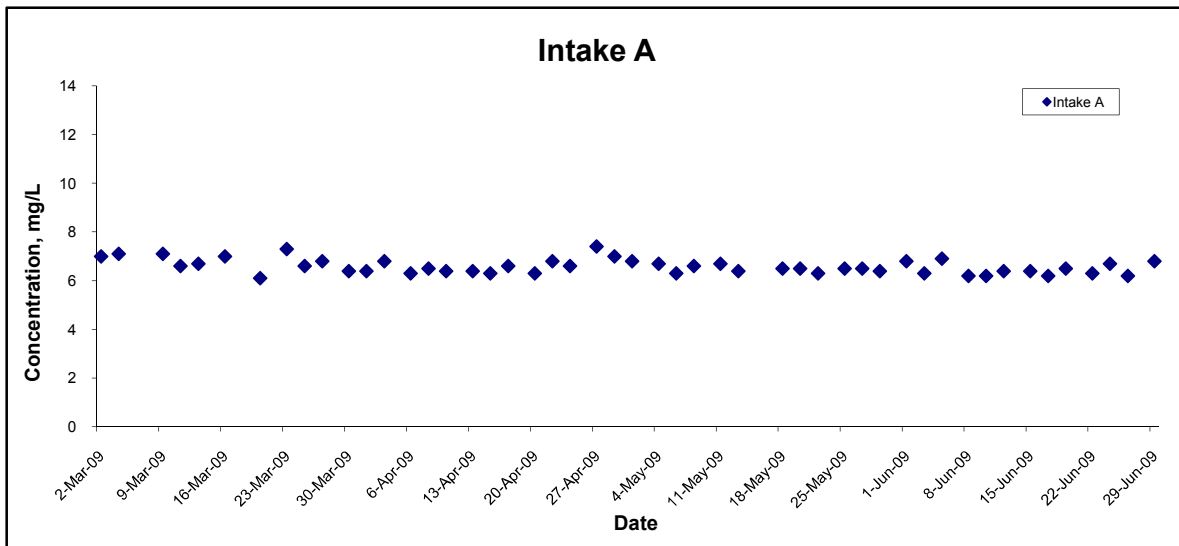
Title Contract No. DC/2007/10 Design and Construction of Hong Kong West Drainage Tunnel  Graphical Presentation of Water Quality Monitoring Results	Scale N.T.S	Project No. MA8001	CINOTECH
	Date Jun 09	Appendix H	

## Dissolved Oxygen (Bottom) at Mid-Flood Tide



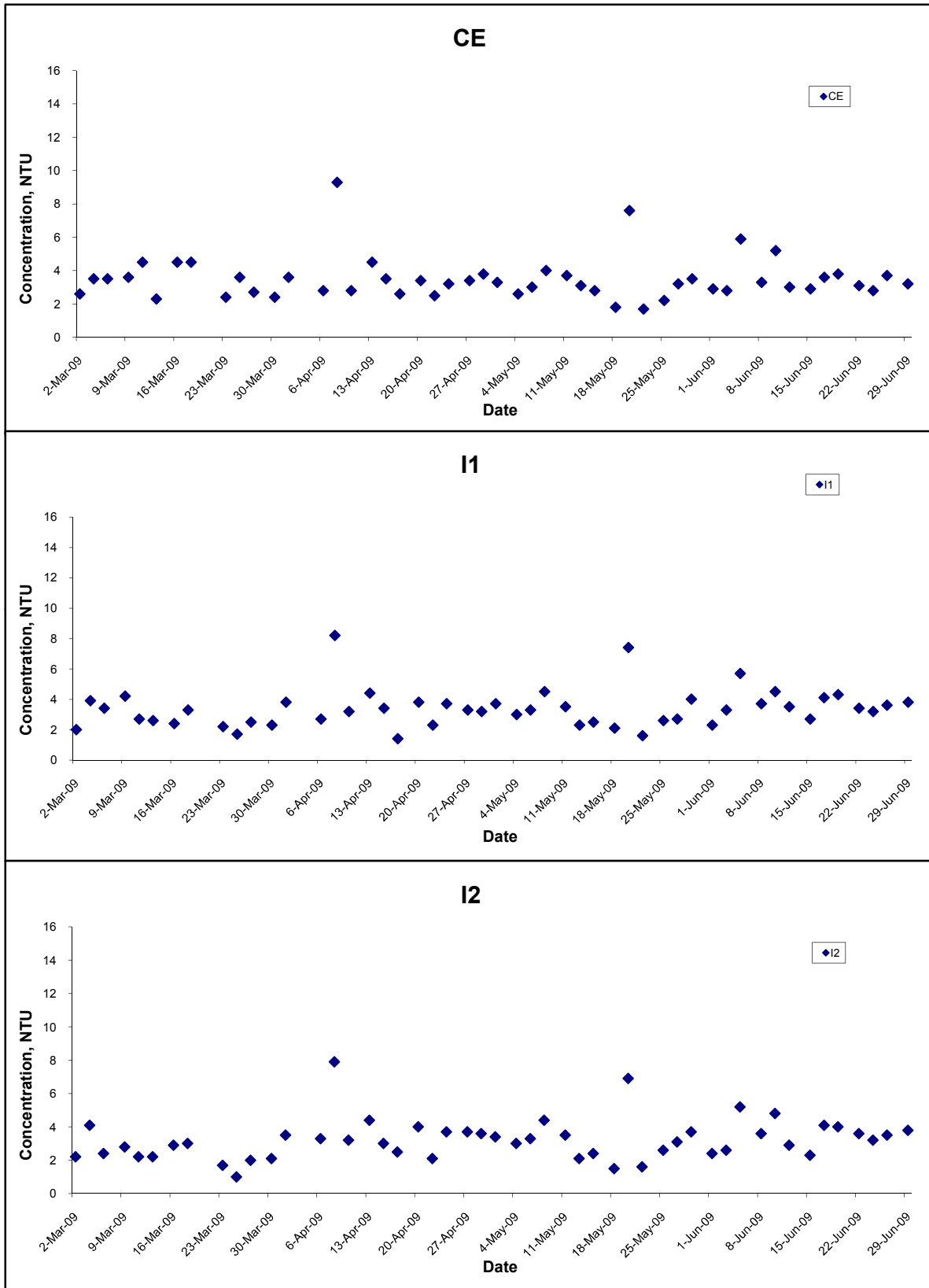
Title Contract No. DC/2007/10 Design and Construction of Hong Kong West Drainage Tunnel  Graphical Presentation of Water Quality Monitoring Results	Scale N.T.S	Project No. MA8001	
	Date Jun 09	Appendix H	

## Dissolved Oxygen (Bottom) at Mid-Flood Tide



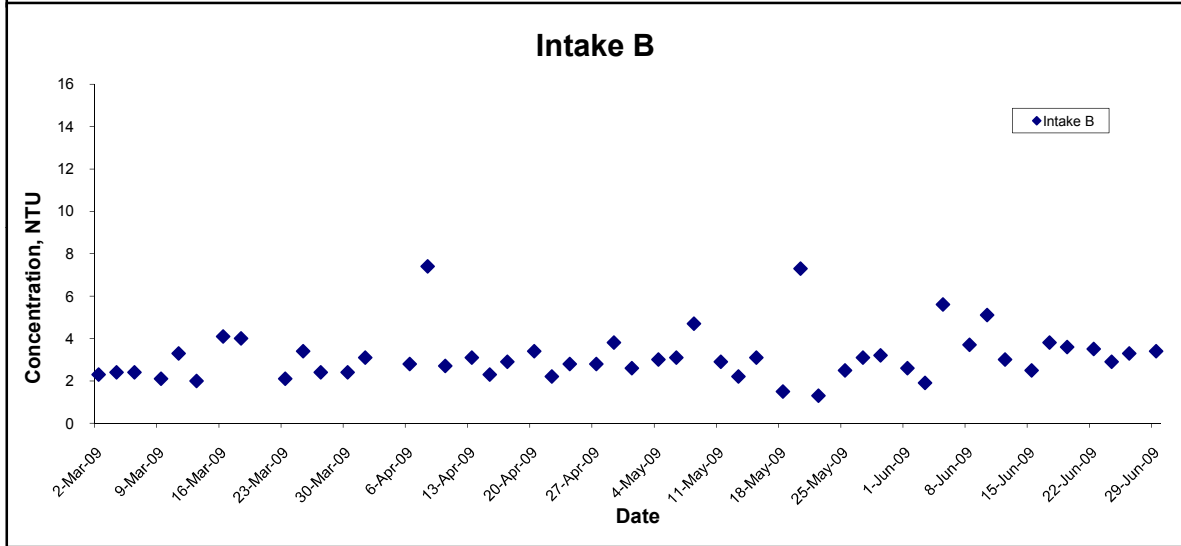
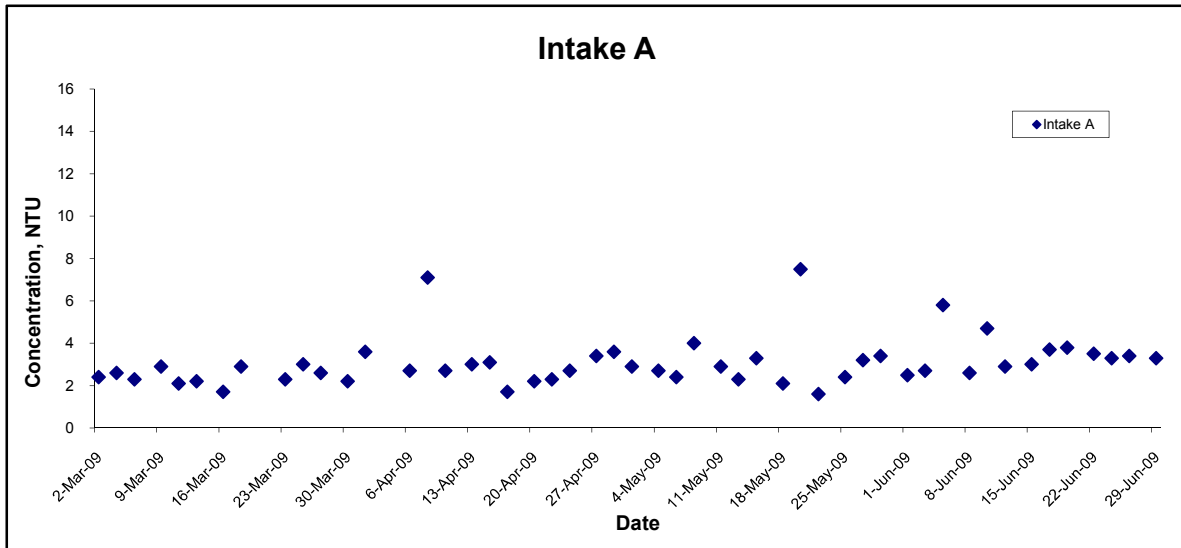
Title Contract No. DC/2007/10 Design and Construction of Hong Kong West Drainage Tunnel  Graphical Presentation of Water Quality Monitoring Results	Scale N.T.S	Project No. MA8001	
	Date Jun 09	Appendix H	

## Turbidity (Depth-averaged) at Mid-Ebb Tide



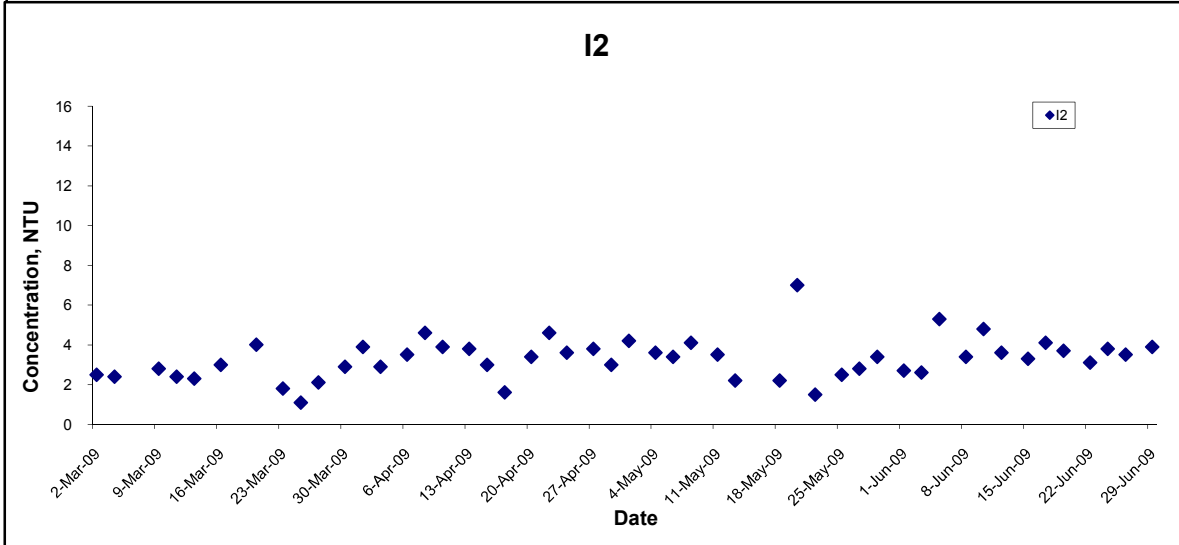
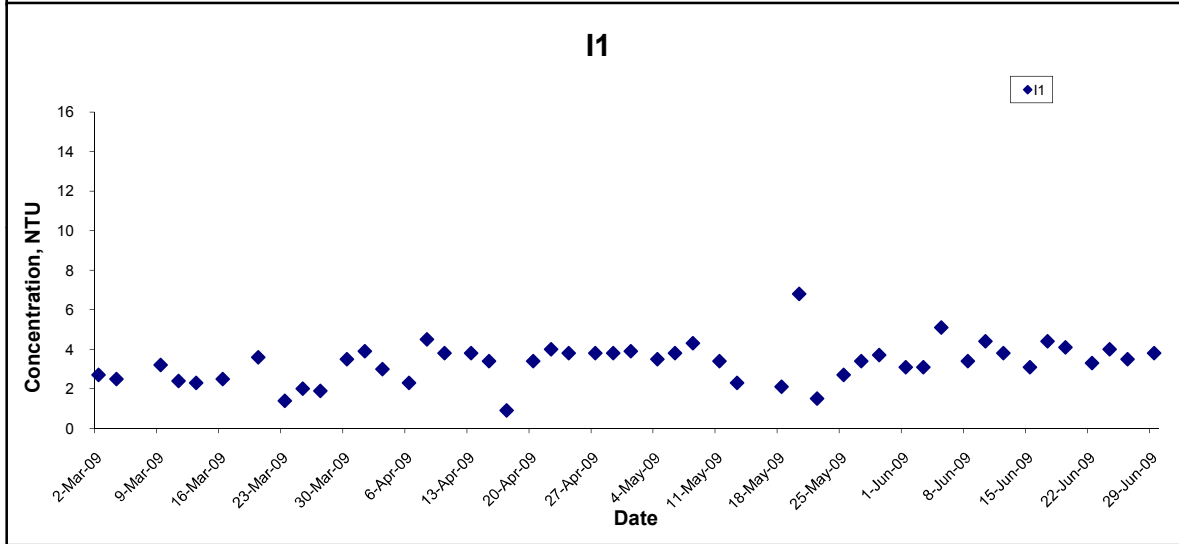
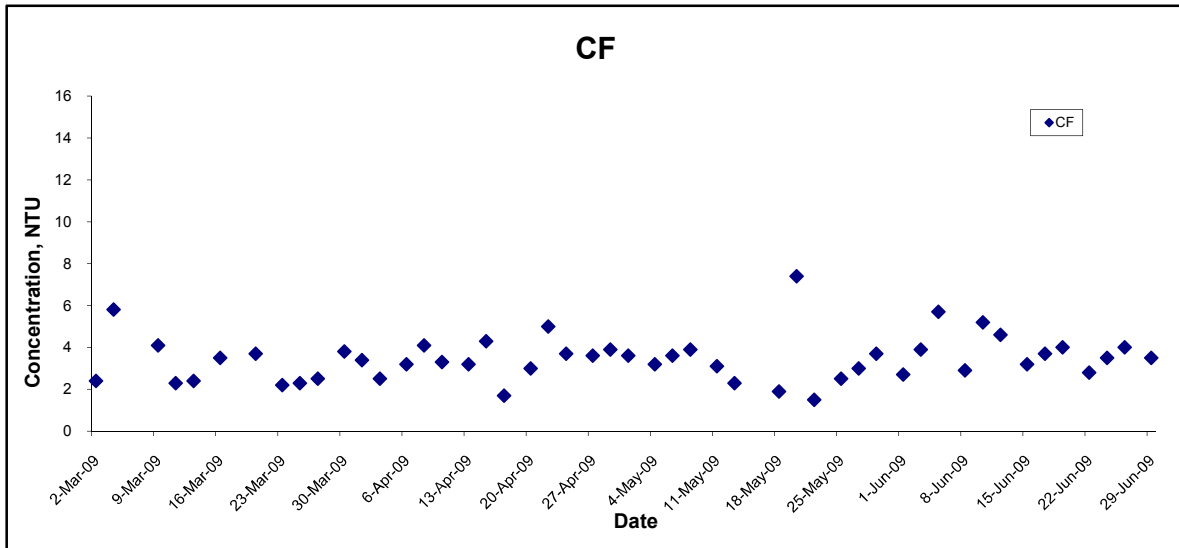
Title Contract No. DC/2007/10 Design and Construction of Hong Kong West Drainage Tunnel  Graphical Presentation of Water Quality Monitoring Results	Scale N.T.S	Project No. MA8001	CINOTECH
	Date Jun 09	Appendix H	

## Turbidity (Depth-averaged) at Mid-Ebb Tide



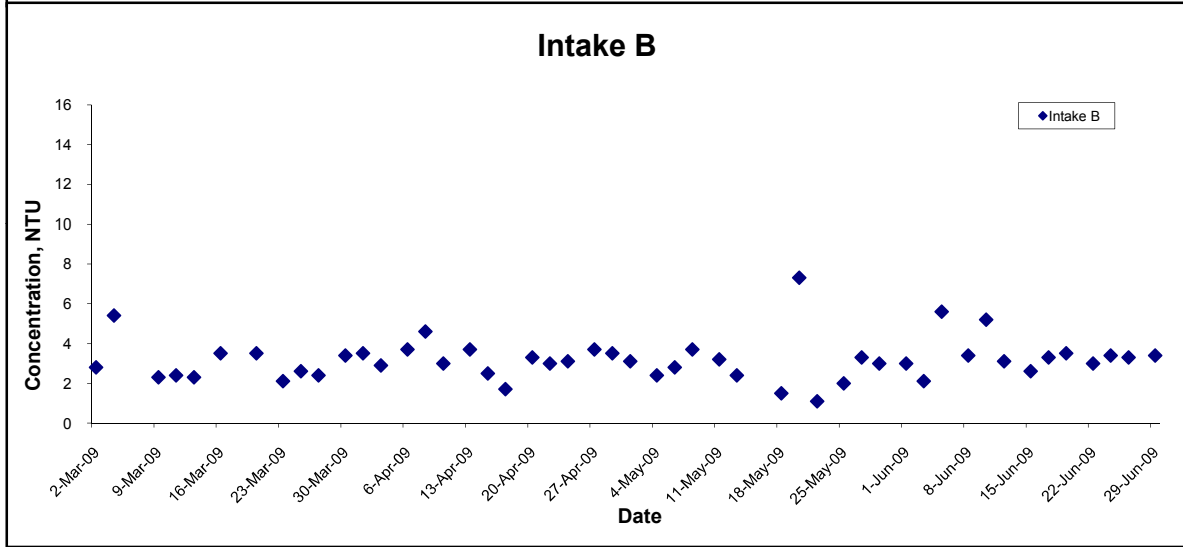
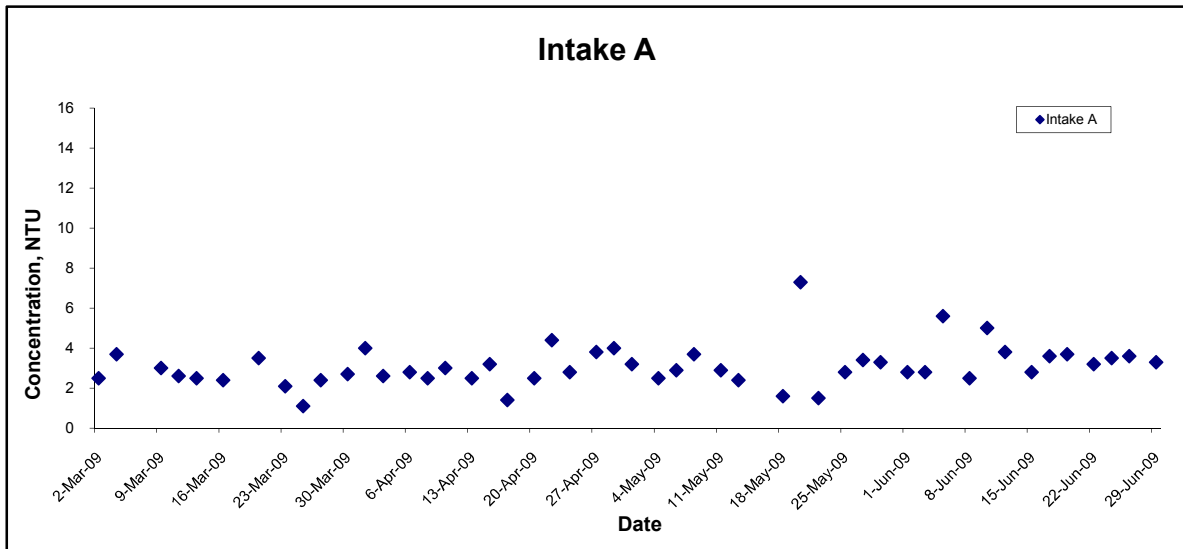
Title Contract No. DC/2007/10 Design and Construction of Hong Kong West Drainage Tunnel  Graphical Presentation of Water Quality Monitoring Results	Scale N.T.S	Project No. MA8001	
	Date Jun 09	Appendix H	

## Turbidity (Depth-averaged) at Mid-Flood Tide



Title Contract No. DC/2007/10 Design and Construction of Hong Kong West Drainage Tunnel  Graphical Presentation of Water Quality Monitoring Results	Scale N.T.S	Project No. MA8001	
	Date Jun 09	Appendix H	

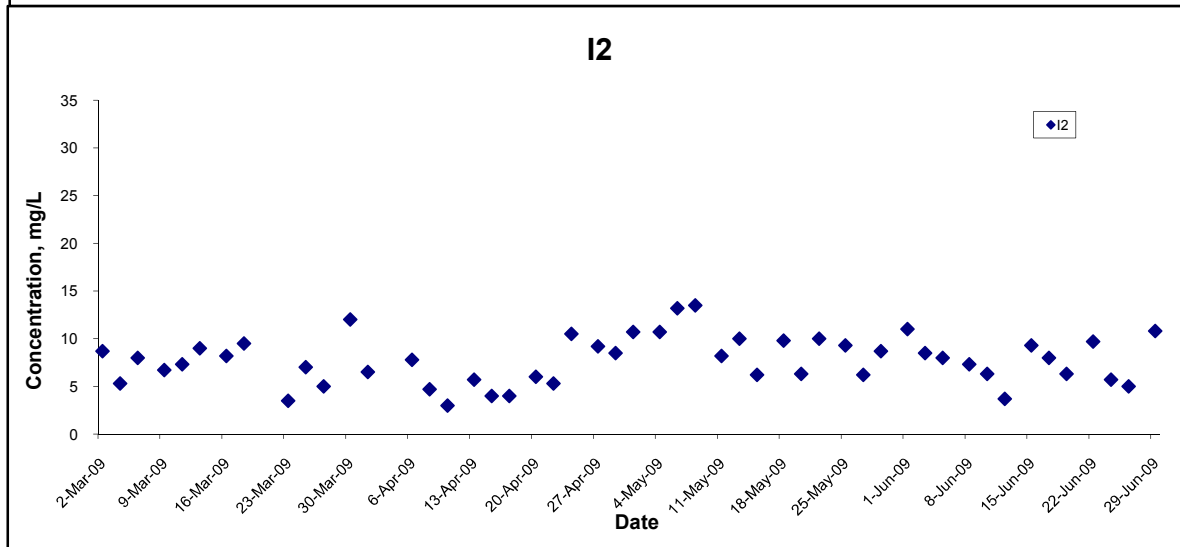
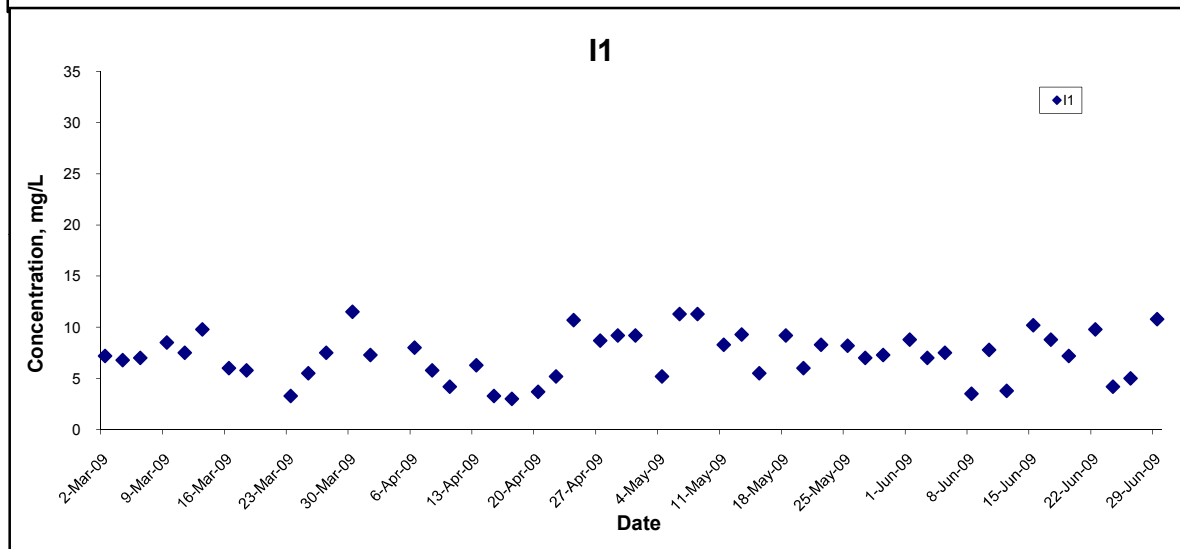
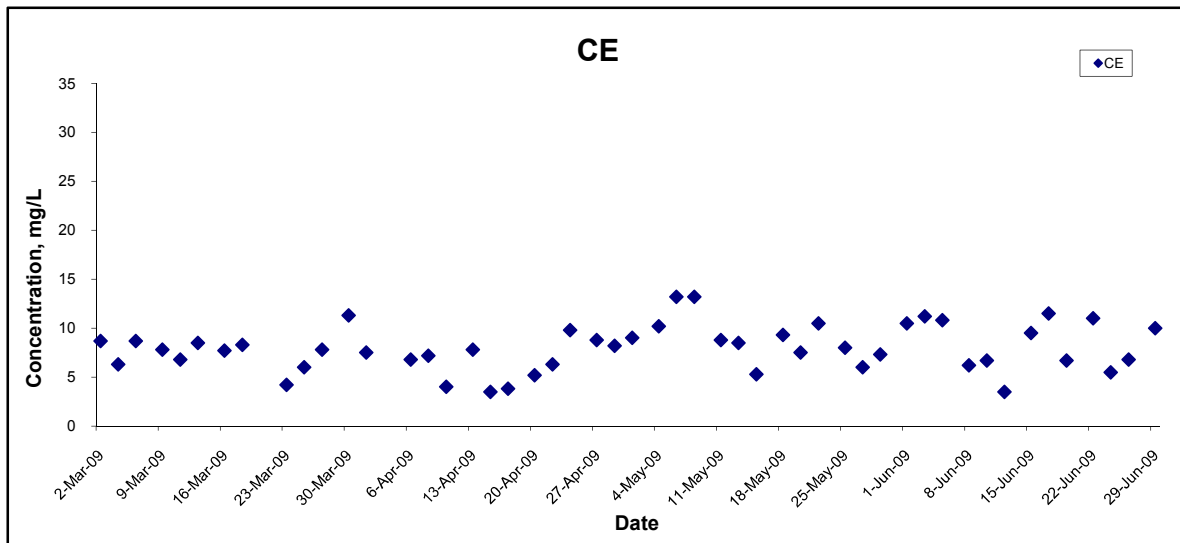
## Turbidity (Depth-averaged) at Mid-Flood Tide



Title Contract No. DC/2007/10 Design and Construction of Hong Kong West Drainage Tunnel  Graphical Presentation of Water Quality Monitoring Results	Scale N.T.S	Project No. MA8001	
	Date Jun 09	Appendix H	

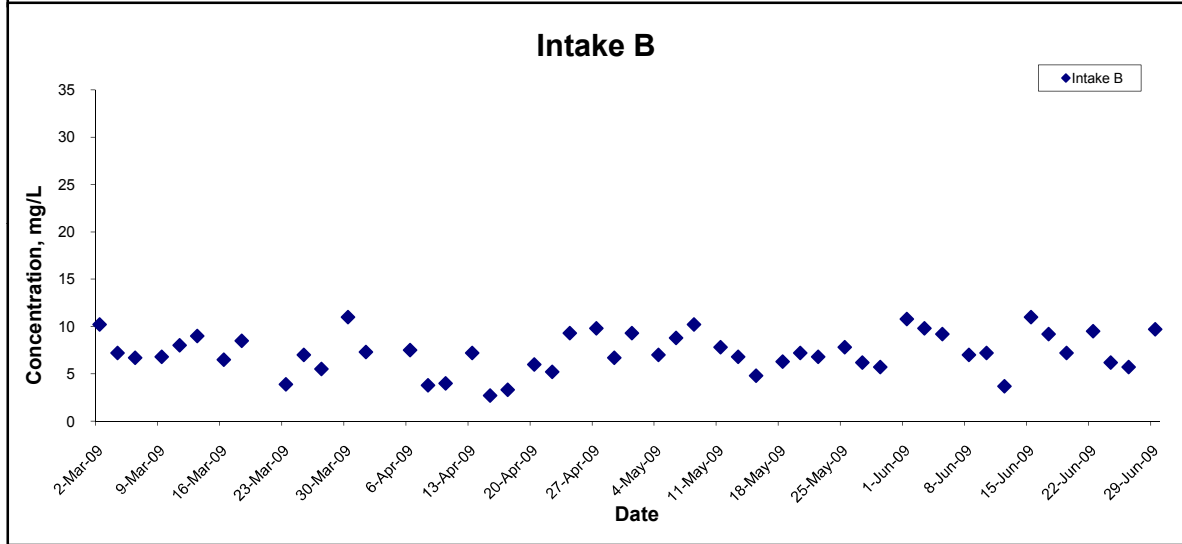
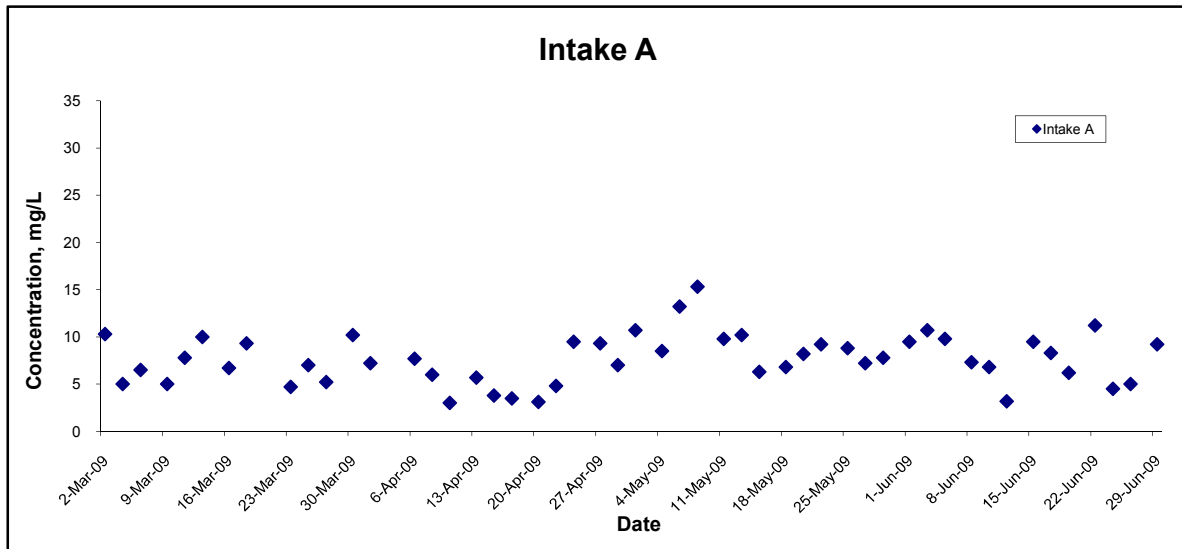


## Suspended Solids (Depth-averaged) at Mid-Ebb Tide



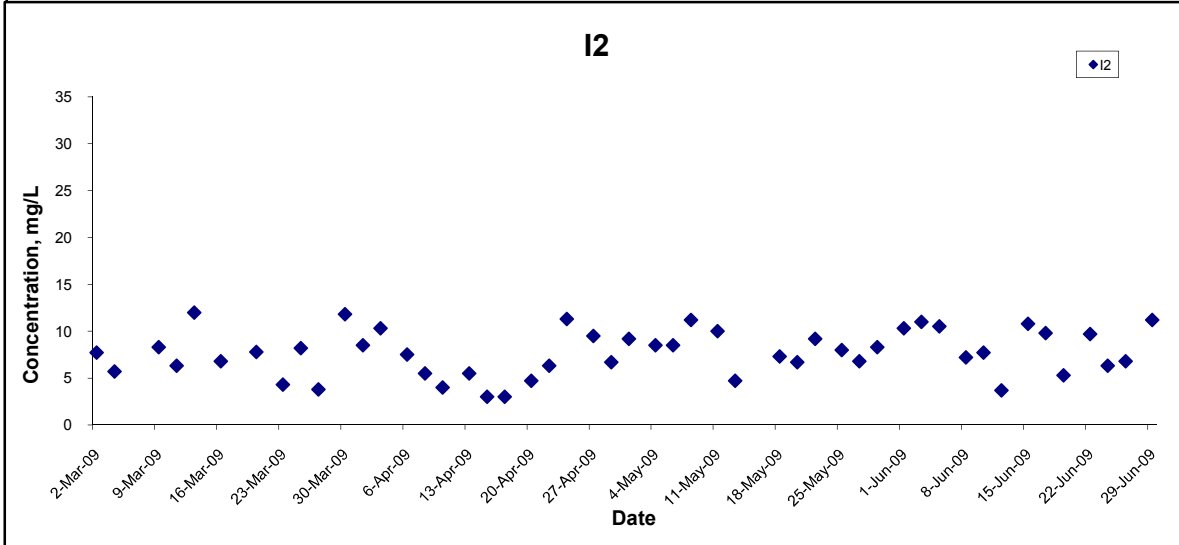
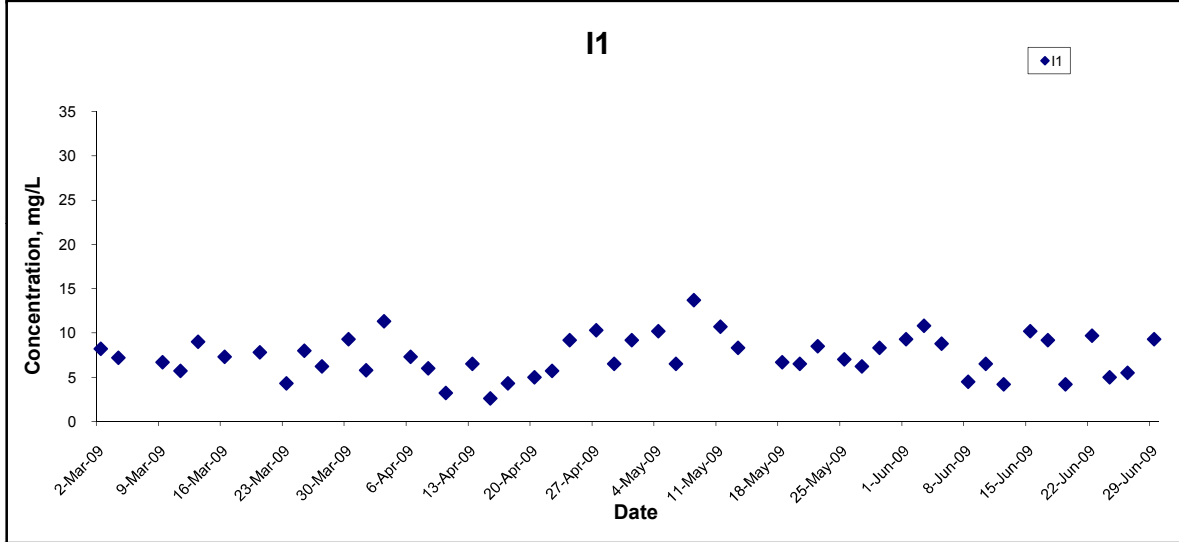
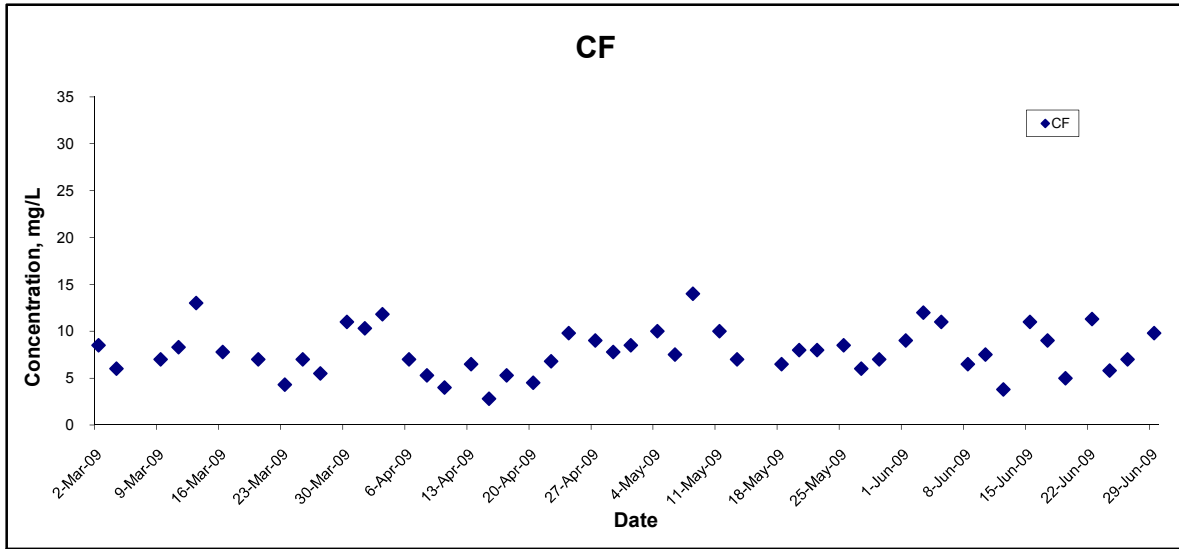
Title Contract No. DC/2007/10 Design and Construction of Hong Kong West Drainage Tunnel  Graphical Presentation of Water Quality Monitoring Results	Scale N.T.S	Project No. MA8001	
	Date Jun 09	Appendix H	

## Suspended Solids (Depth-averaged) at Mid-Ebb Tide



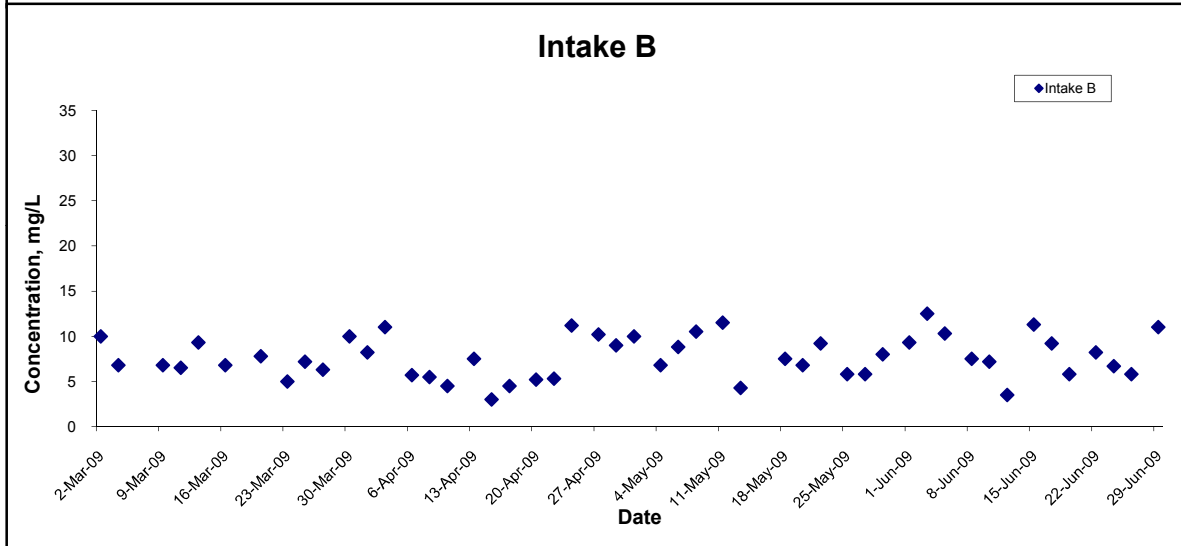
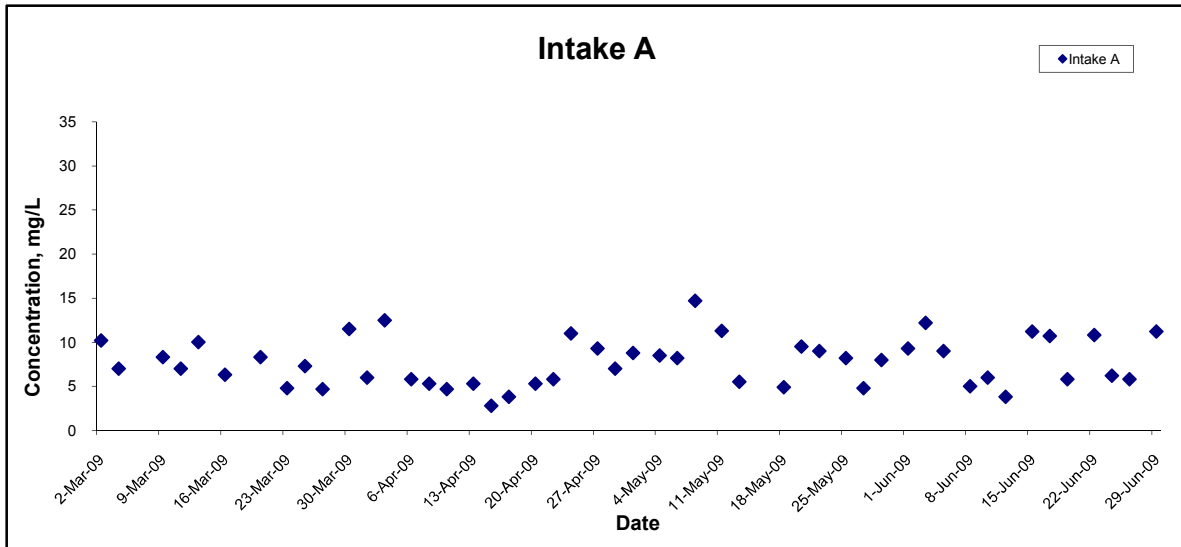
Title Contract No. DC/2007/10 Design and Construction of Hong Kong West Drainage Tunnel  Graphical Presentation of Water Quality Monitoring Results	Scale N.T.S	Project No. MA8001	
	Date Jun 09	Appendix H	

## Suspended Solids (Depth-averaged) at Mid-Flood Tide



Title Contract No. DC/2007/10 Design and Construction of Hong Kong West Drainage Tunnel  Graphical Presentation of Water Quality Monitoring Results	Scale N.T.S	Project No. MA8001	
	Date Jun 09	Appendix H	

## Suspended Solids (Depth-averaged) at Mid-Flood Tide



Title Contract No. DC/2007/10 Design and Construction of Hong Kong West Drainage Tunnel  Graphical Presentation of Water Quality Monitoring Results	Scale N.T.S	Project No. MA8001	CINOTECH
	Date Jun 09	Appendix H	