

Water Quality Monitoring Results at CE - Mid-Ebb Tide

Date	Weather Condition	Sea Condition**	Sampling Time	Depth (m)		Water Temperature (°C)		pH		Salinity ppt		DO Saturation (%)		Dissolved Oxygen (mg/L)			Turbidity (NTU)			Suspended Solids (mg/L)			
						Value	Average	Value	Average	Value	Average	Value	Average	Value	Average	DA*	Value	Average	DA*	Value	Average	DA*	
1-Dec-08	Sunny	Calm	13:56	Surface	1	22.5 22.5	22.5	7.6 7.1	7.4	34.1 34.1	34.1	100.0 99.5	99.8	7.1 7.1	7.1	7.1	7.1	1.5 1.5	1.5	2.0	7.0 7.0	7.0	7.8
				Middle	5.5	22.4 22.4	22.4	8.1 8.2	8.2	34.1 34.1	34.1	98.5 98.1	98.3	7.0 7.0	7.0	7.0	1.9 1.8	1.9	7.0 9.0		9.0		
				Bottom	10	22.3 22.3	22.3	7.1 7.8	7.5	34.1 34.1	34.1	97.5 97.2	97.4	7.0 6.9	7.0	7.0	2.6 2.6	2.6	7.0 8.0		7.5		
5-Dec-08	Fine	Moderate	18:20	Surface	1	23.0 23.0	23.0	8.2 7.8	8.0	30.9 30.9	30.9	97.4 95.7	96.6	6.2 6.2	6.2	6.2	2.7 2.8	2.8	3.1	16.0 14.0	15.0	12.5	
				Middle	5.5	22.5 22.5	22.5	8.0 8.2	8.1	31.0 31.0	31.0	89.0 87.0	88.0	6.3 6.3	6.3	6.3	3.1 3.2	3.2		12.0 10.0	11.0		
				Bottom	10	22.4 22.3	22.4	7.7 8.0	7.9	31.3 31.1	31.2	83.7 83.4	83.6	6.5 6.6	6.6	6.6	3.3 3.3	3.3		12.0 11.0	11.5		
8-Dec-08	Sunny	Calm	10:04	Surface	1	23.8 23.8	23.8	7.6 7.6	7.6	30.6 30.7	30.7	93.0 90.6	91.8	6.5 6.4	6.5	6.5	3.7 3.8	3.8	4.1	5.0 5.0	5.0	5.8	
				Middle	5.5	23.5 23.5	23.5	8.1 8.1	8.1	30.8 31.0	30.9	88.5 86.0	87.3	6.4 6.2	6.3	6.3	4.0 4.0	4.0		6.0 6.0	6.0		
				Bottom	10	23.3 23.3	23.3	7.4 7.8	7.6	31.1 30.6	30.9	84.8 88.4	86.6	6.3 6.5	6.4	6.4	4.4 4.5	4.5		7.0 6.0	6.5		
10-Dec-08	Sunny	Calm	11:02	Surface	1	23.0 23.0	23.0	7.4 7.4	7.4	30.9 31.0	31.0	98.4 96.3	97.4	6.8 6.7	6.8	6.8	3.1 3.2	3.2	3.4	8.0 8.0	8.0	7.7	
				Middle	6	22.7 22.7	22.7	7.5 7.4	7.5	31.1 31.2	31.2	93.1 91.2	92.2	6.7 6.7	6.7	6.7	3.4 3.4	3.4		8.0 8.0	8.0		
				Bottom	11	22.5 22.5	22.5	7.5 7.7	7.6	31.3 31.0	31.2	89.6 91.3	90.5	6.7 6.9	6.8	6.8	3.6 3.7	3.7		7.0 7.0	7.0		
12-Dec-08	Sunny	Calm	12:57	Surface	1	23.2 23.2	23.2	8.1 8.0	8.1	30.6 30.5	30.6	99.2 97.6	98.4	6.3 6.3	6.3	6.3	3.4 3.5	3.5	4.2	11.0 11.0	11.0	12.2	
				Middle	5.5	22.6 22.5	22.6	8.4 8.4	8.4	30.7 30.8	30.8	89.4 86.9	88.2	6.4 6.4	6.4	6.4	4.2 4.3	4.3		8.0 9.0	8.5		
				Bottom	10	22.4 22.4	22.4	8.0 8.4	8.2	31.0 30.9	31.0	83.0 82.5	82.8	6.7 6.7	6.7	6.7	4.8 4.9	4.9		17.0 17.0	17.0		
15-Dec-08	Sunny	Moderate	14:26	Surface	1	23.1 23.1	23.1	7.9 7.5	7.7	30.7 30.7	30.7	98.3 96.6	97.5	6.6 6.5	6.6	6.6	3.0 3.1	3.1	3.5	8.0 8.0	8.0	7.3	
				Middle	5.5	22.5 22.5	22.5	8.3 8.2	8.3	30.9 30.9	30.9	89.2 86.9	88.1	6.6 6.7	6.7	6.7	3.4 3.5	3.5		6.0 6.0	6.0		
				Bottom	10	22.4 22.4	22.4	7.6 8.0	7.8	31.1 31.0	31.1	83.3 82.9	83.1	6.9 6.9	6.9	6.9	3.8 3.9	3.9		8.0 8.0	8.0		
17-Dec-08	Sunny	Calm	15:32	Surface	1	22.9 22.9	22.9	7.7 7.5	7.6	30.2 30.2	30.2	103.4 101.9	102.7	6.8 6.7	6.8	6.8	3.2 3.4	3.3	4.1	<2.5 <2.5	<2.5	3.2	
				Middle	5.5	22.1 22.0	22.1	8.2 8.1	8.2	30.6 30.6	30.6	91.2 87.9	89.6	6.1 5.9	6.0	6.0	3.9 4.3	4.1		3.0 3.0	3.0		
				Bottom	10	21.8 21.9	21.9	7.6 8.1	7.9	30.7 30.7	30.7	87.7 87.0	87.4	6.1 6.0	6.1	6.1	4.9 4.7	4.8		4.0 4.0	4.0		
19-Dec-08	Cloudy	Calm	17:57	Surface	1	22.7 22.7	22.7	7.5 7.6	7.6	32.0 32.0	32.0	91.3 92.3	91.8	6.3 6.4	6.4	6.4	4.3 4.3	4.3	5.3	10.0 9.0	9.5	8.8	
				Middle	5.5	22.7 22.7	22.7	8.4 8.3	8.4	31.7 31.8	31.8	94.3 95.8	95.1	6.7 6.8	6.8	6.8	5.8 5.8	5.8		8.0 8.0	8.0		
				Bottom	10	22.7 22.7	22.7	7.7 8.3	8.0	32.1 31.9	32.0	88.6 88.8	88.7	6.0 6.0	6.0	6.0	5.8 5.8	5.8		9.0 9.0	9.0		
22-Dec-08	Sunny	Calm	09:27	Surface	1	21.8 21.9	21.9	7.5 7.7	7.6	31.3 31.2	31.3	109.9 103.8	106.9	7.4 6.9	7.2	7.2	3.1 3.3	3.2	3.8	5.0 5.0	5.0	5.5	
				Middle	6	21.7 21.7	21.7	8.1 7.5	7.8	31.5 31.5	31.5	90.3 89.6	90.0	6.1 6.0	6.1	6.1	3.8 3.9	3.9		6.0 6.0	6.0		
				Bottom	11	21.6 21.6	21.6	8.0 8.1	8.1	31.6 31.6	31.6	90.2 89.9	90.1	6.2 6.1	6.2	6.2	4.2 4.3	4.3		6.0 6.0	6.0		
24-Dec-08	Sunny	Calm	10:01	Surface	1	22.3 22.3	22.3	7.7 7.6	7.7	29.5 29.5	29.5	90.5 89.2	89.9	6.9 6.8	6.9	6.9	1.8 1.7	1.8	2.4	<2.5 3.0	2.8	3.6	
				Middle	6	21.8 21.8	21.8	7.8 7.7	7.8	30.5 30.4	30.5	78.4 77.5	78.0	6.0 6.0	6.0	6.0	2.5 2.6	2.6		3.0 3.0	3.0		
				Bottom	11	21.4 21.4	21.4	7.7 8.0	7.9	31.1 31.1	31.1	75.1 75.7	75.4	6.0 6.1	6.1	6.1	2.8 2.9	2.9		5.0 5.0	5.0		
27-Dec-08	Sunny	Calm	13:07	Surface	1	22.2 22.2	22.2	7.2 7.7	7.5	29.5 29.5	29.5	96.5 96.0	96.3	7.0 7.0	7.0	7.0	2.3 2.3	2.3	2.6	12.0 12.0	12.0	13.2	
				Middle	5.5	22.2 22.2	22.2	8.1 7.4	7.8	29.7 29.7	29.7	87.0 85.2	86.1	6.3 6.2	6.3	6.3	2.6 2.5	2.6		15.0 15.0	15.0		
				Bottom	10	22.1 22.1	22.1	8.0 8.1	8.1	29.9 29.9	29.9	82.4 82.0	82.2	6.2 6.1	6.2	6.2	2.9 3.1	3.0		12.0 13.0	12.5		

Remarks: * DA: Depth-Averaged
 ** Calm: Small or no wave; Moderate: Between calm and rough; Rough: White capped or rougher

Water Quality Monitoring Results at CE - Mid-Ebb Tide

Date	Weather Condition	Sea Condition**	Sampling Time	Depth (m)		Water Temperature (°C)		pH		Salinity ppt		DO Saturation (%)		Dissolved Oxygen (mg/L)			Turbidity(NTU)			Suspended Solids (mg/L)		
						Value	Average	Value	Average	Value	Average	Value	Average	Value	Average	DA*	Value	Average	DA*	Value	Average	DA*
29-Dec-08	Cloudy	Moderate	14:36	Surface	1	19.6 19.6	19.6	8.2 8.0	8.1	34.2 34.3	34.3	98.8 97.5	98.2	7.4 7.3	7.4	7.6	3.4 3.0	3.2	3.7	8.0 8.0	8.0	8.8
				Middle	5.5	19.6 19.6	19.6	7.8 7.1	7.5	34.3 34.3	34.3	102.3 105.8	104.1	7.7 7.9	7.8		3.6 3.7	3.7		9.0 9.0	9.0	
				Bottom	10	19.6 19.6	19.6	7.4 7.0	7.2	34.3 34.3	34.3	105.6 102.6	104.1	7.9 7.7	7.8		4.1 4.4	4.3		10.0 9.0	9.5	
31-Dec-08	Cloudy	Calm	15:48	Surface	1	22.7 22.7	22.7	8.0 7.7	7.9	29.7 30.0	29.9	88.2 87.2	87.7	6.5 6.5	6.5	6.4	4.3 4.3	4.3	5.3	11.0 11.0	11.0	15.0
				Middle	5.5	22.7 22.7	22.7	8.3 8.3	8.3	30.0 30.4	30.2	84.7 81.8	83.3	6.2 6.1	6.2		5.8 5.8	5.8		17.0 17.0	17.0	
				Bottom	10	22.7 22.7	22.7	7.7 8.2	8.0	30.4 29.4	29.9	80.0 87.3	83.7	5.9 6.4	6.2		5.8 5.8	5.8		17.0 17.0	17.0	

Remarks: The reporting limit for laboratory analysis of suspended solids is 2.5 mg/L. For the results below the reporting limit, the SS level will be taken as 2.5 mg/L.

Remarks: * DA: Depth-Averaged
 ** Calm: Small or no wave; Moderate: Between calm and rough; Rough : White capped or rougher

Water Quality Monitoring Results at CF - Mid-Flood Tide

Date	Weather Condition	Sea Condition**	Sampling Time	Depth (m)		Water Temperature (°C)		pH		Salinity ppt		DO Saturation (%)		Dissolved Oxygen (mg/L)			Turbidity(NTU)			Suspended Solids (mg/L)					
						Value	Average	Value	Average	Value	Average	Value	Average	Value	Average	DA*	Value	Average	DA*	Value	Average	DA*			
1-Dec-08	Sunny	Calm	09:11	Surface	1	22.2 22.3	22.3	7.5 7.8	7.7	34.1 34.1	34.1	98.7 98.6	98.7	7.1 7.0	7.1	7.1	2.6 2.5	2.6	2.8	14.0 14.0	14.0	12.0			
				Middle	-	-	-	-	-	-	-	-	-	-	-		-	-		-	-		-	-	-
				Bottom	3	22.2 22.2	22.2	8.2 7.9	8.1	34.1 34.1	34.1	98.5 98.4	98.5	7.0 7.0	7.0		7.0	3.0 3.0		3.0	10.0 10.0		10.0		
3-Dec-08	Sunny	Calm	15:05	Surface	1	22.8 22.8	22.8	7.6 7.4	7.5	30.0 29.9	30.0	90.2 89.2	89.7	6.5 6.5	6.5	6.5	1.9 1.8	1.9	2.4	9.0 9.0	9.0	9.5			
				Middle	-	-	-	-	-	-	-	-	-	-	-		-	-		-	-		-	-	
				Bottom	3	22.6 22.6	22.6	8.1 7.9	8.0	30.6 30.6	30.6	84.4 83.9	84.2	6.1 6.0	6.1		6.1	2.8 2.8		2.8	10.0 10.0		10.0		
5-Dec-08	Sunny	Moderate	13:01	Surface	1	22.8 22.8	22.8	7.8 8.1	8.0	30.7 30.8	30.8	98.3 97.5	97.9	6.6 6.6	6.6	6.6	1.8 1.9	1.9	2.3	14.0 14.0	14.0	14.3			
				Middle	-	-	-	-	-	-	-	-	-	-	-		-	-		-	-		-	-	
				Bottom	3	22.8 22.8	22.8	8.2 8.2	8.2	31.0 31.0	31.0	96.3 96.1	96.2	6.4 6.4	6.4		6.4	2.5 2.6		2.6	15.0 14.0		14.5		
8-Dec-08	Sunny	Calm	13:38	Surface	1	23.9 23.9	23.9	7.7 8.0	7.9	30.2 30.3	30.3	95.7 96.5	96.1	6.8 6.8	6.8	6.8	2.6 2.6	2.6	3.1	6.0 6.0	6.0	7.7			
				Middle	-	-	-	-	-	-	-	-	-	-	-		-	-		-	-		-	-	
				Bottom	3	23.5 23.5	23.5	8.2 8.0	8.1	30.7 30.8	30.8	89.1 89.3	89.2	6.3 6.3	6.3		6.3	3.5 3.4		3.5	5.0 5.0		5.0		
10-Dec-08	Sunny	Calm	14:36	Surface	1	23.3 23.3	23.3	7.4 7.6	7.5	29.8 29.9	29.9	96.5 94.5	95.5	6.9 7.0	7.0	7.0	2.2 2.1	2.2	2.8	8.0 8.0	8.0	8.0			
				Middle	-	-	-	-	-	-	-	-	-	-	-		-	-		-	-		-	-	
				Bottom	3	22.9 22.9	22.9	7.8 7.7	7.8	30.6 30.6	30.6	93.2 92.8	93.0	6.7 6.7	6.7		6.7	3.3 3.4		3.4	8.0 8.0		8.0		
12-Dec-08	Sunny	Calm	16:23	Surface	1	23.1 23.1	23.1	8.1 8.5	8.3	30.5 30.5	30.5	96.8 96.2	96.5	6.6 6.6	6.6	6.6	2.8 2.6	2.7	3.1	9.0 9.0	9.0	13.5			
				Middle	-	-	-	-	-	-	-	-	-	-	-		-	-		-	-		-	-	
				Bottom	3	23.1 23.1	23.1	8.7 8.5	8.6	30.6 30.6	30.6	95.3 95.1	95.2	6.4 6.3	6.4		6.4	3.3 3.5		3.4	18.0 18.0		18.0		
15-Dec-08	Sunny	Moderate	10:09	Surface	1	22.9 22.9	22.9	7.9 8.2	8.1	30.6 30.7	30.7	97.5 96.8	97.2	6.9 6.9	6.9	6.9	2.3 2.2	2.3	2.5	5.0 5.0	5.0	7.3			
				Middle	-	-	-	-	-	-	-	-	-	-	-		-	-		-	-		-	-	
				Bottom	3	22.9 22.9	22.9	8.2 8.1	8.2	30.8 30.8	30.8	95.8 95.6	95.7	6.7 6.7	6.7		6.7	2.5 2.6		2.6	9.0 10.0		9.5		
17-Dec-08	Sunny	Calm	10:43	Surface	1	22.8 22.9	22.9	7.8 8.1	8.0	30.4 30.4	30.4	96.2 95.9	96.1	6.4 6.3	6.4	6.4	2.8 2.6	2.7	3.0	3.0 3.0	3.0	3.0			
				Middle	-	-	-	-	-	-	-	-	-	-	-		-	-		-	-		-	-	
				Bottom	3	22.8 22.8	22.8	8.4 8.1	8.3	30.4 30.4	30.4	95.2 95.0	95.1	6.3 6.3	6.3		6.3	3.2 3.3		3.3	3.0 3.0		3.0		
19-Dec-08	Sunny	Calm	12:31	Surface	1	22.6 22.7	22.7	7.9 8.2	8.1	31.1 31.2	31.2	100.3 99.0	99.7	6.8 6.7	6.8	6.8	3.0 2.8	2.9	3.1	8.0 8.0	8.0	7.8			
				Middle	-	-	-	-	-	-	-	-	-	-	-		-	-		-	-		-	-	
				Bottom	3	22.7 22.7	22.7	8.5 8.7	8.6	31.6 31.6	31.6	97.3 97.2	97.3	6.5 6.5	6.5		6.5	3.2 3.1		3.2	8.0 7.0		7.5		
22-Dec-08	Sunny	Calm	14:17	Surface	1	22.2 22.2	22.2	7.6 8.1	7.9	30.7 30.8	30.8	98.2 97.4	97.8	6.6 6.5	6.6	6.6	2.9 2.7	2.8	3.1	6.0 7.0	6.5	6.3			
				Middle	-	-	-	-	-	-	-	-	-	-	-		-	-		-	-		-	-	
				Bottom	3	22.2 22.2	22.2	8.5 8.2	8.4	31.0 31.0	31.0	96.2 96.1	96.2	6.4 6.4	6.4		6.4	3.3 3.4		3.4	6.0 6.0		6.0		
24-Dec-08	Sunny	Calm	15:28	Surface	1	22.5 22.5	22.5	7.5 7.8	7.7	29.6 29.2	29.4	84.4 84.3	84.4	6.5 6.4	6.5	6.5	2.5 2.4	2.5	2.4	3.0 3.0	3.0	4.0			
				Middle	-	-	-	-	-	-	-	-	-	-	-		-	-		-	-		-	-	
				Bottom	3	22.0 22.0	22.0	7.9 7.8	7.9	30.2 30.2	30.2	77.6 78.0	77.8	6.1 6.1	6.1		6.1	2.2 2.1		2.2	5.0 5.0		5.0		

Remarks: * DA: Depth-Averaged
 ** Calm: Small or no wave; Moderate: Between calm and rough; Rough : White capped or rougher

Water Quality Monitoring Results at CF - Mid-Flood Tide

Date	Weather Condition	Sea Condition**	Sampling Time	Depth (m)		Water Temperature (°C)		pH		Salinity ppt		DO Saturation (%)		Dissolved Oxygen (mg/L)			Turbidity(NTU)			Suspended Solids (mg/L)					
						Value	Average	Value	Average	Value	Average	Value	Average	Value	Average	DA*	Value	Average	DA*	Value	Average	DA*			
27-Dec-08	Sunny	Calm	08:13	Surface	1	21.8 21.8	21.8	7.7 8.2	8.0	28.8 28.8	28.8	107.6 106.4	107.0	7.8 7.7	7.8	7.8	1.4 1.5	1.5	2.2	12.0 12.0	12.0	11.0			
				Middle	-	-	-	-	-	-	-	-	-	-	-		-	-		-	-		-	-	-
				Bottom	3	21.6 21.7	21.7	8.5 8.2	8.4	29.1 29.1	29.1	110.0 109.5	109.8	8.0 7.9	8.0		8.0	2.8 2.8		2.8	2.8		10.0 10.0	10.0	
29-Dec-08	Cloudy	Moderate	08:33	Surface	1	19.6 19.6	19.6	7.3 7.7	7.5	33.6 33.6	33.6	115.1 116.7	115.9	8.7 8.8	8.8	8.8	2.2 2.2	2.2	2.7	12.0 11.0	11.5	10.8			
				Middle	-	-	-	-	-	-	-	-	-	-	-		-	-		-	-		-	-	-
				Bottom	3	19.5 19.5	19.5	8.1 7.8	8.0	33.9 33.9	33.9	108.9 114.4	111.7	8.2 8.6	8.4		8.4	3.2 3.1		3.2	3.2		10.0 10.0	10.0	
31-Dec-08	Cloudy	Calm	08:28	Surface	1	22.6 22.7	22.7	7.9 8.2	8.1	29.5 29.5	29.5	91.4 91.2	91.3	6.5 6.5	6.5	6.5	3.0 2.8	2.9	3.6	12.0 12.0	12.0	14.0			
				Middle	-	-	-	-	-	-	-	-	-	-	-		-	-		-	-		-	-	-
				Bottom	3	22.7 22.7	22.7	8.4 8.2	8.3	30.5 30.4	30.5	87.3 86.4	86.9	6.0 6.1	6.1		6.1	4.2 4.1		4.2	4.2		16.0 16.0	16.0	

Remarks: * DA: Depth-Averaged
 ** Calm: Small or no wave; Moderate: Between calm and rough; Rough : White capped or rougher

Water Quality Monitoring Results at I1 - Mid-Ebb Tide

Date	Weather Condition	Sea Condition**	Sampling Time	Depth (m)		Water Temperature (°C)		pH		Salinity ppt		DO Saturation (%)		Dissolved Oxygen (mg/L)			Turbidity (NTU)			Suspended Solids (mg/L)		
						Value	Average	Value	Average	Value	Average	Value	Average	Value	Average	DA*	Value	Average	DA*	Value	Average	DA*
1-Dec-08	Sunny	Calm	14:11	Surface	1	22.5 22.5	22.5	7.3 7.8	7.6	34.1 34.1	34.1	97.1 97.1	97.1	6.9 6.9	6.9	6.9	3.2 2.9	3.1	2.4	10.0 10.0	10.0	9.3
				Middle	4.5	22.4 22.4	22.4	7.3 7.4	7.4	34.1 34.1	34.1	96.4 96.2	96.3	6.9 6.9	6.9	6.9	2.0 1.9	2.0		12.0 12.0	12.0	
				Bottom	8	22.4 22.4	22.4	7.7 7.7	7.7	34.1 34.1	34.1	95.6 95.5	95.6	6.8 6.8	6.8	6.8	2.0 2.0	2.0		6.0 6.0	6.0	
5-Dec-08	Fine	Moderate	17:53	Surface	1	22.9 22.9	22.9	7.9 8.1	8.0	30.9 30.9	30.9	96.4 93.3	94.9	6.2 6.3	6.3	6.4	2.2 2.2	2.2	2.5	12.0 12.0	12.0	12.3
				Middle	4.5	22.8 22.8	22.8	7.7 7.7	7.7	31.0 30.9	31.0	90.6 90.1	90.4	6.4 6.4	6.4	6.4	2.6 2.6	2.6		14.0 14.0	14.0	
				Bottom	8	22.6 22.6	22.6	8.2 8.0	8.1	30.9 31.1	31.0	87.5 86.7	87.1	6.4 6.3	6.4	6.4	2.8 2.8	2.8		11.0 11.0	11.0	
8-Dec-08	Sunny	Calm	09:36	Surface	1	23.7 23.7	23.7	7.9 7.8	7.9	29.8 29.8	29.8	102.0 101.7	101.9	7.3 7.4	7.4	7.1	3.1 3.0	3.1	3.6	7.0 7.0	7.0	5.2
				Middle	4.5	23.6 23.5	23.6	7.7 7.7	7.7	30.1 30.1	30.1	93.7 92.6	93.2	6.8 6.7	6.8	6.8	3.5 3.6	3.6		3.0 4.0	3.5	
				Bottom	8	23.1 23.1	23.1	7.8 7.8	7.8	30.7 30.7	30.7	83.5 82.8	83.2	6.1 6.0	6.1	6.1	4.0 4.1	4.1		5.0 5.0	5.0	
10-Dec-08	Sunny	Calm	10:42	Surface	1	22.9 22.9	22.9	7.5 7.4	7.5	30.6 30.6	30.6	102.6 101.4	102.0	7.2 7.3	7.3	7.2	2.7 2.6	2.7	3.0	6.0 6.0	6.0	6.7
				Middle	4.5	22.8 22.8	22.8	7.6 7.4	7.5	30.7 30.7	30.7	96.3 95.6	96.0	7.0 6.9	7.0	7.0	2.9 3.0	3.0		8.0 8.0	8.0	
				Bottom	8	22.5 22.5	22.5	7.6 7.5	7.6	30.9 31.1	31.0	90.3 89.8	90.1	6.6 6.6	6.6	6.6	3.3 3.4	3.4		6.0 6.0	6.0	
12-Dec-08	Sunny	Calm	12:28	Surface	1	23.1 23.1	23.1	8.1 8.3	8.2	30.5 30.5	30.5	97.9 94.3	96.1	6.3 6.4	6.4	6.5	2.6 2.7	2.7	3.0	9.0 9.0	9.0	10.3
				Middle	4.5	22.9 22.9	22.9	8.2 8.1	8.2	30.6 30.6	30.6	91.3 90.7	91.0	6.6 6.6	6.6	6.6	3.0 2.9	3.0		11.0 11.0	11.0	
				Bottom	8	22.7 22.6	22.7	8.2 8.3	8.3	30.6 30.8	30.7	87.3 86.3	86.8	6.5 6.4	6.5	6.5	3.2 3.4	3.3		11.0 11.0	11.0	
15-Dec-08	Sunny	Moderate	13:54	Surface	1	23.0 23.0	23.0	7.9 8.0	8.0	30.7 30.7	30.7	97.1 93.8	95.5	6.5 6.6	6.6	6.7	2.4 2.4	2.4	2.8	5.0 6.0	5.5	6.2
				Middle	4.5	22.9 22.8	22.9	7.8 7.9	7.9	30.8 30.8	30.8	90.9 90.4	90.7	6.8 6.8	6.8	6.8	2.8 2.8	2.8		6.0 6.0	6.0	
				Bottom	8	22.6 22.6	22.6	8.0 8.0	8.0	30.7 30.9	30.8	87.3 86.5	86.9	6.7 6.6	6.7	6.7	3.0 3.1	3.1		7.0 7.0	7.0	
17-Dec-08	Sunny	Calm	15:44	Surface	1	22.8 22.8	22.8	7.8 8.0	7.9	30.2 30.2	30.2	101.7 97.2	99.5	6.7 6.5	6.6	6.4	2.5 2.6	2.6	3.0	4.0 4.0	4.0	3.7
				Middle	4.5	22.5 22.5	22.5	7.7 7.8	7.8	30.3 30.3	30.3	93.6 92.8	93.2	6.2 6.2	6.2	6.2	2.9 2.7	2.8		3.0 3.0	3.0	
				Bottom	8	22.2 22.2	22.2	8.0 8.0	8.0	30.4 30.5	30.5	90.1 91.6	90.9	6.1 6.2	6.2	6.2	3.2 3.8	3.5		4.0 4.0	4.0	
19-Dec-08	Cloudy	Calm	17:31	Surface	1	22.7 22.7	22.7	8.0 8.1	8.1	32.0 32.0	32.0	94.4 95.3	94.9	6.5 6.7	6.6	6.5	3.2 3.2	3.2	3.5	7.0 7.0	7.0	8.0
				Middle	4.5	22.7 22.7	22.7	8.0 7.9	8.0	32.1 32.0	32.1	91.2 91.8	91.5	6.3 6.3	6.3	6.3	3.6 3.5	3.6		9.0 9.0	9.0	
				Bottom	8	22.7 22.7	22.7	8.2 8.2	8.2	31.6 32.2	31.9	89.8 90.1	90.0	6.1 6.1	6.1	6.1	3.6 3.5	3.6		8.0 8.0	8.0	
22-Dec-08	Sunny	Calm	08:57	Surface	1	22.1 22.2	22.2	8.2 7.9	8.1	31.2 31.2	31.2	101.4 98.3	99.9	6.8 6.5	6.7	6.4	2.7 2.5	2.6	2.9	7.0 7.0	7.0	6.0
				Middle	4.5	22.0 22.0	22.0	8.3 7.8	8.1	31.3 31.3	31.3	90.9 90.9	90.9	6.1 6.1	6.1	6.1	2.8 2.9	2.9		6.0 6.0	6.0	
				Bottom	8	21.9 21.9	21.9	8.4 7.7	8.1	31.4 31.4	31.4	90.6 90.4	90.5	6.2 6.2	6.2	6.2	3.1 3.2	3.2		5.0 5.0	5.0	
24-Dec-08	Sunny	Calm	09:42	Surface	1	22.3 22.3	22.3	7.8 7.8	7.8	29.2 29.2	29.2	98.6 96.9	97.8	7.4 7.3	7.4	7.0	2.6 2.5	2.6	2.6	3.0 3.0	3.0	4.0
				Middle	4.5	22.1 22.1	22.1	7.9 7.6	7.8	29.9 29.9	29.9	88.3 84.7	86.5	6.7 6.5	6.6	6.6	2.4 2.6	2.5		6.0 6.0	6.0	
				Bottom	8	21.8 21.8	21.8	8.0 7.8	7.9	30.4 30.4	30.4	79.0 77.8	78.4	6.1 6.0	6.1	6.1	2.8 2.8	2.8		3.0 3.0	3.0	
27-Dec-08	Sunny	Calm	12:42	Surface	1	21.8 21.8	21.8	8.2 7.9	8.1	29.5 29.5	29.5	87.6 87.4	87.5	6.6 6.6	6.6	6.4	1.9 1.8	1.9	2.5	14.0 14.0	14.0	13.2
				Middle	4.5	21.9 21.9	21.9	8.3 7.8	8.1	29.9 29.9	29.9	82.2 81.2	81.7	6.2 6.2	6.2	6.2	2.3 2.4	2.4		16.0 16.0	16.0	
				Bottom	8	22.1 22.1	22.1	8.4 7.8	8.1	30.2 30.2	30.2	81.4 81.4	81.4	6.2 6.2	6.2	6.2	3.1 3.2	3.2		9.0 10.0	9.5	

Remarks: * DA: Depth-Averaged
 ** Calm: Small or no wave; Moderate: Between calm and rough; Rough: White capped or rougher

Water Quality Monitoring Results at I1 - Mid-Ebb Tide

Date	Weather Condition	Sea Condition**	Sampling Time	Depth (m)		Water Temperature (°C)		pH		Salinity ppt		DO Saturation (%)		Dissolved Oxygen (mg/L)			Turbidity(NTU)			Suspended Solids (mg/L)		
						Value	Average	Value	Average	Value	Average	Value	Average	Value	Average	DA*	Value	Average	DA*	Value	Average	DA*
29-Dec-08	Cloudy	Moderate	14:08	Surface	1	19.6 19.6	19.6	7.7 6.8	7.3	34.2 34.2	34.2	91.3 90.8	91.1	6.8 6.8	6.8	7.0	2.9 2.9	2.9	3.7	8.0 8.0	8.0	6.7
				Middle	4.5	19.6 19.6	19.6	8.1 8.1	8.1	34.2 34.2	34.2	96.4 95.0	95.7	7.2 7.1	7.2		3.6 3.9	3.8		7.0 7.0	7.0	
				Bottom	8	19.6 19.6	19.6	7.0 7.9	7.5	34.2 34.2	34.2	86.3 95.3	90.8	6.5 7.1	6.8		4.5 4.3	4.4		5.0 5.0	5.0	
31-Dec-08	Cloudy	Calm	15:19	Surface	1	22.7 22.7	22.7	7.9 8.2	8.1	28.2 28.1	28.2	91.7 93.1	92.4	6.6 6.7	6.7	6.6	3.2 3.2	3.2	3.5	14.0 14.0	14.0	13.2
				Middle	4.5	22.7 22.7	22.7	7.9 8.0	8.0	28.6 28.6	28.6	89.1 87.1	88.1	6.5 6.3	6.4		3.6 3.5	3.6		12.0 13.0	12.5	
				Bottom	8	22.7 22.7	22.7	8.1 8.2	8.2	29.6 29.6	29.6	79.9 78.8	79.4	6.1 6.1	6.1		3.6 3.5	3.6		13.0 13.0	13.0	

Remarks: * DA: Depth-Averaged
 ** Calm: Small or no wave; Moderate: Between calm and rough; Rough : White capped or rougher

Water Quality Monitoring Results at I1 - Mid-Flood Tide

Date	Weather Condition	Sea Condition**	Sampling Time	Depth (m)		Water Temperature (°C)		pH		Salinity ppt		DO Saturation (%)		Dissolved Oxygen (mg/L)			Turbidity(NTU)			Suspended Solids (mg/L)		
						Value	Average	Value	Average	Value	Average	Value	Average	Value	Average	DA*	Value	Average	DA*	Value	Average	DA*
1-Dec-08	Sunny	Calm	09:38	Surface	1	22.5 22.5	22.5	7.3 7.5	7.4	34.2 34.2	34.2	102.3 101.8	102.1	7.3 7.2	7.3	1.6 1.6	1.6	1.8	8.0 8.0	8.0	12.0	
				Middle	5	22.4 22.4	22.4	7.9 7.4	7.7	34.1 34.2	34.2	100.4 100.0	100.2	7.2 7.1	7.2	1.7 1.9	1.8		10.0 10.0	10.0		
				Bottom	9	22.3 22.3	22.3	7.5 8.1	7.8	34.2 34.2	34.2	98.9 98.8	98.9	7.1 7.0	7.1	2.0 2.0	2.0		18.0 18.0	18.0		
3-Dec-08	Sunny	Calm	15:18	Surface	1	22.4 22.4	22.4	7.5 8.1	7.8	31.3 31.3	31.3	84.9 85.1	85.0	6.1 6.1	6.1	2.5 2.5	2.5	2.7	7.0 8.0	7.5	7.5	
				Middle	5	22.8 22.8	22.8	7.9 7.8	7.9	30.6 30.6	30.6	93.9 91.7	92.8	6.8 6.6	6.7	2.6 2.7	2.7		8.0 8.0	8.0		
				Bottom	9	22.8 22.8	22.8	7.9 7.7	7.8	30.7 30.7	30.7	87.1 85.7	86.4	6.2 6.2	6.2	2.9 2.9	2.9		7.0 7.0	7.0		
5-Dec-08	Sunny	Moderate	13:40	Surface	1	22.6 22.6	22.6	7.8 7.6	7.7	29.9 31.3	30.6	93.5 96.4	95.0	6.8 6.5	6.7	2.0 2.2	2.1	2.5	15.0 15.0	15.0	13.3	
				Middle	4.5	22.6 22.6	22.6	7.8 7.9	7.9	31.3 31.2	31.3	90.2 89.9	90.1	6.2 6.3	6.3	2.5 2.6	2.6		13.0 13.0	13.0		
				Bottom	8	22.5 22.4	22.5	8.0 8.3	8.2	31.3 31.3	31.3	86.4 89.3	87.9	6.1 6.4	6.3	2.8 3.0	2.9		12.0 12.0	12.0		
8-Dec-08	Sunny	Calm	14:16	Surface	1	23.9 23.9	23.9	7.7 7.6	7.7	30.7 30.8	30.8	94.7 96.8	95.8	7.0 7.0	7.0	3.0 3.1	3.1	3.6	6.0 6.0	6.0	6.7	
				Middle	4.5	23.8 23.8	23.8	7.8 7.7	7.8	31.0 31.1	31.1	100.3 99.2	99.8	7.2 7.2	7.2	3.5 3.6	3.6		4.0 4.0	4.0		
				Bottom	8	23.8 23.8	23.8	7.8 8.1	8.0	31.5 31.5	31.5	93.1 93.3	93.2	6.5 6.8	6.7	3.9 4.0	4.0		4.0 4.0	4.0		
10-Dec-08	Sunny	Calm	15:14	Surface	1	23.1 23.2	23.2	7.2 7.3	7.3	31.2 31.3	31.3	96.0 97.4	96.7	7.1 7.2	7.2	2.9 3.0	3.0	3.2	13.0 13.0	13.0	9.5	
				Middle	4.5	23.0 23.1	23.1	7.6 7.5	7.6	31.5 31.5	31.5	100.0 99.6	99.8	7.4 7.4	7.4	3.1 3.2	3.2		8.0 8.0	8.0		
				Bottom	8	22.9 22.9	22.9	7.5 7.8	7.7	31.8 31.7	31.8	96.5 96.6	96.6	7.1 7.2	7.2	3.5 3.5	3.5		7.0 8.0	7.5		
12-Dec-08	Sunny	Calm	16:52	Surface	1	23.0 23.0	23.0	7.8 8.1	8.0	29.9 30.6	30.3	90.5 92.1	91.3	7.0 6.2	6.6	2.8 2.7	2.8	3.1	14.0 14.0	14.0	13.3	
				Middle	4.5	22.8 22.8	22.8	8.6 8.1	8.4	30.7 30.6	30.7	88.9 88.5	88.7	6.2 6.4	6.3	3.0 3.2	3.1		14.0 14.0	14.0		
				Bottom	8	22.6 22.6	22.6	8.1 8.5	8.3	30.7 30.7	30.7	94.5 85.9	90.2	6.5 6.6	6.6	3.3 3.7	3.5		12.0 12.0	12.0		
15-Dec-08	Sunny	Moderate	10:43	Surface	1	22.8 22.8	22.8	7.6 7.7	7.7	29.9 31.0	30.5	92.0 94.2	93.1	7.2 6.6	6.9	2.4 2.4	2.4	2.8	7.0 7.0	7.0	8.3	
				Middle	4.5	22.7 22.7	22.7	8.0 7.8	7.9	31.0 30.9	31.0	89.5 89.2	89.4	6.5 6.6	6.6	2.8 2.9	2.9		7.0 7.0	7.0		
				Bottom	8	22.6 22.5	22.6	7.9 8.2	8.1	31.0 31.0	31.0	88.4 90.3	89.4	6.5 6.8	6.7	3.1 3.3	3.2		11.0 11.0	11.0		
17-Dec-08	Sunny	Calm	10:56	Surface	1	22.7 22.7	22.7	7.6 7.8	7.7	30.2 30.2	30.2	98.6 99.1	98.9	6.9 6.9	6.9	3.1 2.8	3.0	3.3	3.0 3.0	3.0	3.0	
				Middle	4.5	22.6 22.5	22.6	8.1 7.7	7.9	30.3 30.3	30.3	92.5 92.0	92.3	6.3 6.3	6.3	3.0 3.2	3.1		3.0 3.0	3.0		
				Bottom	8	22.4 22.3	22.4	7.8 8.4	8.1	30.4 30.4	30.4	91.6 91.7	91.7	6.3 6.3	6.3	3.5 3.9	3.7		3.0 3.0	3.0		
19-Dec-08	Sunny	Calm	13:09	Surface	1	22.5 22.3	22.4	7.7 7.9	7.8	29.5 32.3	30.9	97.9 103.0	100.5	6.7 6.9	6.8	2.9 2.9	2.9	3.2	9.0 9.0	9.0	9.0	
				Middle	4.5	22.7 22.7	22.7	8.3 7.9	8.1	32.3 32.0	32.2	91.7 91.7	91.7	6.1 6.1	6.1	3.2 3.3	3.3		10.0 10.0	10.0		
				Bottom	8	22.7 22.7	22.7	7.9 8.4	8.2	32.1 32.2	32.2	91.8 91.8	91.8	6.1 6.1	6.1	3.4 3.4	3.4		8.0 8.0	8.0		
22-Dec-08	Sunny	Calm	14:51	Surface	1	22.4 22.5	22.5	7.7 7.8	7.8	31.3 31.3	31.3	100.9 101.3	101.1	6.7 6.7	6.7	3.0 3.0	3.0	3.2	6.0 6.0	6.0	5.5	
				Middle	5	22.3 22.3	22.3	8.0 7.8	7.9	31.4 31.4	31.4	97.2 96.3	96.8	6.5 6.4	6.5	3.1 3.1	3.1		6.0 6.0	6.0		
				Bottom	9	22.2 22.2	22.2	8.2 8.2	8.2	31.4 31.4	31.4	94.9 93.8	94.4	6.3 6.2	6.3	3.4 3.6	3.5		4.0 5.0	4.5		
24-Dec-08	Sunny	Calm	16:07	Surface	1	22.5 22.4	22.5	7.3 7.4	7.4	28.5 28.5	28.5	102.5 98.7	100.6	7.7 7.4	7.6	1.9 1.9	1.9	2.2	3.0 3.0	3.0	3.7	
				Middle	4.5	21.8 21.7	21.8	7.8 7.6	7.7	29.9 30.0	30.0	82.9 81.1	82.0	6.4 6.2	6.3	2.2 2.3	2.3		5.0 5.0	5.0		
				Bottom	8	21.5 21.5	21.5	7.6 7.9	7.8	30.5 30.5	30.5	78.5 78.1	78.3	6.1 6.1	6.1	2.4 2.4	2.4		3.0 3.0	3.0		

Remarks: * DA: Depth-Averaged
 ** Calm: Small or no wave; Moderate: Between calm and rough; Rough : White capped or rougher

Water Quality Monitoring Results at I1 - Mid-Flood Tide

Date	Weather Condition	Sea Condition**	Sampling Time	Depth (m)		Water Temperature (°C)		pH		Salinity ppt		DO Saturation (%)		Dissolved Oxygen (mg/L)			Turbidity(NTU)			Suspended Solids (mg/L)		
						Value	Average	Value	Average	Value	Average	Value	Average	Value	Average	DA*	Value	Average	DA*	Value	Average	DA*
27-Dec-08	Sunny	Calm	08:50	Surface	1	21.7 21.7	21.7	7.6 7.8	7.7	29.8 29.8	29.8	111.7 106.6	109.2	8.0 7.7	7.9	7.5	1.9 1.9	1.9	2.5	8.0 9.0	8.5	10.2
				Middle	4.5	21.6 21.5	21.6	7.9 7.8	7.9	29.9 29.9	29.9	96.9 96.4	96.7	7.1 7.0	7.1		2.4 2.5	2.5		15.0 15.0	15.0	
				Bottom	8	21.5 21.5	21.5	8.2 8.3	8.3	30.0 30.0	30.0	95.0 95.0	95.0	6.9 6.9	6.9		2.9 3.1	3.0		7.0 7.0	7.0	
29-Dec-08	Cloudy	Moderate	09:10	Surface	1	19.6 19.6	19.6	7.2 7.4	7.3	34.2 34.2	34.2	92.1 91.8	92.0	6.9 6.9	6.9	6.9	2.1 2.2	2.2	2.7	9.0 9.0	9.0	8.0
				Middle	4.5	19.6 19.6	19.6	7.4 7.4	7.4	34.2 34.2	34.2	86.5 93.0	89.8	6.5 7.0	6.8		2.4 2.7	2.6		8.0 8.0	8.0	
				Bottom	8	19.6 19.6	19.6	7.8 7.8	7.8	34.3 34.3	34.3	94.9 95.4	95.2	7.1 7.1	7.1		3.1 3.2	3.2		7.0 7.0	7.0	
31-Dec-08	Cloudy	Calm	09:04	Surface	1	22.5 22.3	22.4	7.8 8.0	7.9	31.8 31.9	31.9	87.4 88.0	87.7	6.3 6.4	6.4	6.5	2.9 2.9	2.9	3.2	12.0 12.0	12.0	13.5
				Middle	4.5	22.7 22.7	22.7	8.3 7.9	8.1	31.8 31.8	31.8	89.7 90.0	89.9	6.6 6.6	6.6		3.2 3.3	3.3		10.0 10.0	10.0	
				Bottom	8	22.7 22.7	22.7	8.0 8.3	8.2	32.1 31.9	32.0	89.9 88.7	89.3	6.6 6.5	6.6		3.4 3.4	3.4		18.0 19.0	18.5	

Remarks: * DA: Depth-Averaged
 ** Calm: Small or no wave; Moderate: Between calm and rough; Rough : White capped or rougher

Water Quality Monitoring Results at I2 - Mid-Ebb Tide

Date	Weather Condition	Sea Condition**	Sampling Time	Depth (m)		Water Temperature (°C)		pH		Salinity ppt		DO Saturation (%)		Dissolved Oxygen (mg/L)			Turbidity(NTU)			Suspended Solids (mg/L)		
						Value	Average	Value	Average	Value	Average	Value	Average	Value	Average	DA*	Value	Average	DA*	Value	Average	DA*
1-Dec-08	Sunny	Calm	14:21	Surface	1	22.5 22.5	22.5	7.8 7.5	7.7	34.1 34.1	34.1	97.4 97.5	97.5	6.9 6.9	6.9	6.9	1.6 1.4	1.5	1.4	7.0 7.0	7.0	8.5
				Middle	4.5	22.4 22.4	22.4	7.9 7.4	7.7	34.1 34.1	34.1	97.3 97.0	97.2	6.9 6.9	6.9	6.9	1.3 1.3	1.3		10.0 10.0	10.0	
				Bottom	8	22.4 22.4	22.4	8.0 7.5	7.8	34.1 34.1	34.1	95.8 95.7	95.8	6.8 6.8	6.8	6.8	1.5 1.4	1.5		8.0 9.0	8.5	
5-Dec-08	Fine	Moderate	17:45	Surface	1	22.9 22.9	22.9	8.0 7.9	8.0	31.0 31.0	31.0	100.8 97.9	99.4	6.5 6.5	6.5	6.5	2.0 2.0	2.0	2.3	12.0 12.0	12.0	13.3
				Middle	4.5	22.7 22.7	22.7	8.3 7.7	8.0	31.1 31.1	31.1	90.3 90.3	90.3	6.5 6.3	6.4	6.4	2.2 2.3	2.3		12.0 12.0	12.0	
				Bottom	8	22.5 22.5	22.5	8.0 8.0	8.0	31.2 31.3	31.3	88.6 88.4	88.5	6.4 6.3	6.4	6.4	2.6 2.7	2.7		16.0 16.0	16.0	
8-Dec-08	Sunny	Calm	09:28	Surface	1	23.8 23.8	23.8	7.9 7.7	7.8	29.6 29.6	29.6	105.4 104.4	104.9	8.2 8.2	8.2	8.2	2.6 2.7	2.7	3.1	6.0 6.0	6.0	6.8
				Middle	4.5	23.5 23.5	23.5	8.0 7.7	7.9	30.0 30.0	30.0	100.8 100.1	100.5	7.3 7.2	7.3	7.3	3.0 3.0	3.0		5.0 5.0	5.0	
				Bottom	8	23.4 23.4	23.4	7.9 7.8	7.9	30.5 30.5	30.5	88.0 87.5	87.8	6.4 6.3	6.4	6.4	3.4 3.5	3.5		10.0 9.0	9.5	
10-Dec-08	Sunny	Calm	10:36	Surface	1	22.9 22.9	22.9	7.4 7.5	7.5	30.5 30.5	30.5	108.7 106.6	107.7	7.9 7.9	7.9	7.9	2.2 2.3	2.3	2.8	10.0 9.0	9.5	8.8
				Middle	4.5	22.8 22.8	22.8	7.4 7.4	7.4	30.8 30.8	30.8	101.1 100.8	101.0	7.3 7.2	7.3	7.3	2.7 2.8	2.8		8.0 8.0	8.0	
				Bottom	8	22.7 22.7	22.7	7.5 7.5	7.5	31.0 31.1	31.1	94.3 94.0	94.2	6.9 6.8	6.9	6.9	3.1 3.2	3.2		9.0 9.0	9.0	
12-Dec-08	Sunny	Calm	12:20	Surface	1	23.1 23.1	23.1	8.5 8.2	8.4	30.6 30.6	30.6	99.8 97.0	98.4	6.4 6.5	6.5	6.5	2.7 2.7	2.7	2.8	9.0 9.0	9.0	10.7
				Middle	4.5	22.8 22.8	22.8	8.4 8.0	8.2	30.7 30.7	30.7	89.3 89.3	89.3	6.6 6.3	6.5	6.5	2.6 2.7	2.7		11.0 11.0	11.0	
				Bottom	8	22.6 22.6	22.6	8.4 8.1	8.3	30.9 30.9	30.9	87.1 86.8	87.0	6.4 6.3	6.4	6.4	3.0 3.1	3.1		12.0 12.0	12.0	
15-Dec-08	Sunny	Moderate	13:45	Surface	1	23.0 23.0	23.0	8.0 7.8	7.9	30.8 30.8	30.8	100.3 97.4	98.9	6.7 6.8	6.8	6.8	2.3 2.3	2.3	2.6	7.0 7.0	7.0	8.3
				Middle	4.5	22.8 22.8	22.8	8.1 7.9	8.0	30.9 30.9	30.9	89.8 89.8	89.8	6.9 6.6	6.8	6.8	2.4 2.5	2.5		11.0 11.0	11.0	
				Bottom	8	22.6 22.6	22.6	8.1 7.9	8.0	31.1 31.1	31.1	87.8 87.6	87.7	6.7 6.6	6.7	6.7	2.8 2.9	2.9		7.0 7.0	7.0	
17-Dec-08	Sunny	Calm	15:54	Surface	1	22.9 22.8	22.9	8.0 7.9	8.0	30.2 30.2	30.2	99.1 96.5	97.8	6.6 6.4	6.5	6.5	2.8 2.3	2.6	2.8	<2.5 3.0	2.8	3.6
				Middle	4.5	22.4 22.4	22.4	7.8 7.8	7.8	30.4 30.4	30.4	92.5 92.5	92.5	6.4 6.4	6.4	6.4	2.5 2.7	2.6		4.0 4.0	4.0	
				Bottom	8	22.1 22.1	22.1	8.1 7.8	8.0	30.6 30.6	30.6	90.4 90.1	90.3	6.2 6.2	6.2	6.2	3.0 3.2	3.1		4.0 4.0	4.0	
19-Dec-08	Cloudy	Calm	17:22	Surface	1	22.5 22.6	22.6	8.3 8.1	8.2	32.3 32.2	32.3	103.8 100.2	102.0	7.0 6.7	6.9	6.9	2.6 2.8	2.7	3.0	6.0 6.0	6.0	7.8
				Middle	4.5	22.7 22.7	22.7	8.3 7.9	8.1	32.2 32.2	32.2	93.3 93.3	93.3	6.2 6.2	6.2	6.2	3.1 3.1	3.1		7.0 7.0	7.0	
				Bottom	8	22.7 22.7	22.7	8.5 8.0	8.3	32.3 32.3	32.3	93.8 93.8	93.8	6.3 6.3	6.3	6.3	3.3 3.3	3.3		11.0 10.0	10.5	
22-Dec-08	Sunny	Calm	08:49	Surface	1	22.2 22.2	22.2	7.6 8.1	7.9	31.1 31.1	31.1	95.0 95.3	95.2	6.3 6.4	6.4	6.4	2.8 2.9	2.9	3.2	5.0 5.0	5.0	5.3
				Middle	4.5	22.1 22.1	22.1	7.6 7.8	7.7	31.2 31.1	31.2	92.9 92.5	92.7	6.3 6.3	6.3	6.3	3.2 3.1	3.2		5.0 5.0	5.0	
				Bottom	8	21.9 21.9	21.9	8.0 8.1	8.1	31.0 31.3	31.2	91.4 91.0	91.2	6.1 6.0	6.1	6.1	3.4 3.6	3.5		6.0 6.0	6.0	
24-Dec-08	Sunny	Calm	09:36	Surface	1	22.2 22.2	22.2	7.9 7.7	7.8	28.9 28.9	28.9	93.3 92.2	92.8	7.1 7.0	7.1	7.1	2.5 2.4	2.5	2.7	3.0 3.0	3.0	3.0
				Middle	4.5	21.8 21.8	21.8	7.7 7.8	7.8	29.7 29.8	29.8	85.3 84.4	84.9	6.5 6.5	6.5	6.5	2.6 2.6	2.6		3.0 3.0	3.0	
				Bottom	8	21.6 21.6	21.6	7.9 7.9	7.9	30.2 30.2	30.2	79.2 79.2	79.2	6.1 6.1	6.1	6.1	2.9 3.1	3.0		3.0 3.0	3.0	
27-Dec-08	Sunny	Calm	12:33	Surface	1	22.2 22.2	22.2	7.6 8.2	7.9	29.9 29.9	29.9	99.1 97.9	98.5	7.2 7.1	7.2	7.2	1.2 1.3	1.3	1.7	11.0 11.0	11.0	10.7
				Middle	4.5	21.9 21.9	21.9	7.5 7.7	7.6	30.1 30.1	30.1	95.3 94.2	94.8	6.9 6.8	6.9	6.9	1.6 1.6	1.6		11.0 11.0	11.0	
				Bottom	8	21.2 21.2	21.2	8.1 8.1	8.1	30.7 30.7	30.7	86.0 84.6	85.3	6.3 6.2	6.3	6.3	2.1 2.2	2.2		10.0 10.0	10.0	

Remarks: * DA: Depth-Averaged
 ** Calm: Small or no wave; Moderate: Between calm and rough; Rough: White capped or rougher

Water Quality Monitoring Results at I2 - Mid-Ebb Tide

Date	Weather Condition	Sea Condition**	Sampling Time	Depth (m)		Water Temperature (°C)		pH		Salinity ppt		DO Saturation (%)		Dissolved Oxygen (mg/L)			Turbidity(NTU)			Suspended Solids (mg/L)			
						Value	Average	Value	Average	Value	Average	Value	Average	Value	Average	DA*	Value	Average	DA*	Value	Average	DA*	
29-Dec-08	Cloudy	Moderate	13:57	Surface	1	19.7 19.7	19.7	7.3 7.9	7.6	34.2 34.2	34.2	93.8 93.5	93.7	7.0 7.0	7.0	7.0	7.0	2.1 2.2	2.2	2.6	7.0 7.0	7.0	9.0
				Middle	4.5	19.6 19.6	19.6	7.2 7.4	7.3	34.2 34.2	34.2	91.9 90.2	91.1	6.9 6.8	6.9	6.9	6.9	2.4 2.3	2.4		7.0 7.0	7.0	
				Bottom	8	19.6 19.6	19.6	7.6 7.6	7.6	34.2 34.2	34.2	82.2 81.9	82.1	6.3 6.2	6.3	6.3	6.3	2.9 3.4	3.2		13.0 13.0	13.0	
31-Dec-08	Cloudy	Calm	15:08	Surface	1	22.5 22.6	22.6	8.2 8.1	8.2	27.6 27.6	27.6	88.5 89.9	89.2	7.7 7.8	7.8	7.0	2.6 2.8	2.7	3.0	14.0 14.0	14.0	12.7	
				Middle	4.5	22.7 22.7	22.7	8.3 7.9	8.1	28.3 28.3	28.3	89.8 88.4	89.1	6.2 6.1	6.2	6.2	3.1 3.1	3.1		10.0 10.0	10.0		
				Bottom	8	22.7 22.7	22.7	8.3 8.0	8.2	29.2 29.2	29.2	84.8 83.9	84.4	6.5 6.4	6.5	6.5	6.5	3.3 3.3		3.3	14.0 14.0		14.0

Remarks: The reporting limit for laboratory analysis of suspended solids is 2.5 mg/L. For the results below the reporting limit, the SS level will be taken as 2.5 mg/L.

Remarks: * DA: Depth-Averaged
 ** Calm: Small or no wave; Moderate: Between calm and rough; Rough : White capped or rougher

Water Quality Monitoring Results at I2 - Mid-Flood Tide

Date	Weather Condition	Sea Condition**	Sampling Time	Depth (m)		Water Temperature (°C)		pH		Salinity ppt		DO Saturation (%)		Dissolved Oxygen (mg/L)			Turbidity(NTU)			Suspended Solids (mg/L)		
						Value	Average	Value	Average	Value	Average	Value	Average	Value	Average	DA*	Value	Average	DA*	Value	Average	DA*
1-Dec-08	Sunny	Calm	09:30	Surface	1	22.5 22.5	22.5	7.4 7.5	7.5	34.1 34.1	34.1	104.5 103.9	104.2	7.4 7.4	7.4	7.3	1.4 1.2	1.3	1.4	6.0 6.0	6.0	8.2
				Middle	4.5	22.4 22.4	22.4	7.3 7.5	7.4	34.1 34.1	34.1	101.5 100.9	101.2	7.2 7.2	7.2		1.4 1.4	1.4		12.0 6.0	6.5	
				Bottom	8	22.3 22.3	22.3	7.3 7.4	7.4	34.2 34.2	34.2	99.8 99.5	99.7	7.1 7.1	7.1		1.5 1.6	1.6		12.0 12.0	12.0	
3-Dec-08	Sunny	Calm	15:30	Surface	1	22.6 22.6	22.6	7.9 7.9	7.9	30.7 30.8	30.8	86.1 84.9	85.5	6.2 6.2	6.2	6.5	2.4 2.4	2.4	2.7	10.0 10.0	10.0	11.2
				Middle	4.5	22.8 22.8	22.8	7.9 7.9	7.9	30.0 30.1	30.1	91.6 90.3	91.0	6.7 6.6	6.7		2.6 2.7	2.7		14.0 14.0	14.0	
				Bottom	8	22.6 22.6	22.6	7.9 7.8	7.9	30.8 30.8	30.8	85.5 84.5	85.0	6.3 6.2	6.3		2.8 2.9	2.9		9.0 10.0	9.5	
5-Dec-08	Sunny	Moderate	13:32	Surface	1	22.8 22.8	22.8	7.5 7.6	7.6	31.3 31.2	31.3	98.6 96.4	97.5	6.7 6.6	6.7	6.6	2.3 2.5	2.4	2.6	12.0 12.0	12.0	14.2
				Middle	4.5	22.6 22.6	22.6	7.4 7.6	7.5	31.3 31.3	31.3	92.1 90.5	91.3	6.5 6.5	6.5		2.6 2.6	2.6		14.0 14.0	14.0	
				Bottom	8	22.5 22.5	22.5	7.5 7.6	7.6	31.4 31.4	31.4	89.7 89.5	89.6	6.4 6.5	6.5		2.7 2.8	2.8		17.0 16.0	16.5	
8-Dec-08	Sunny	Calm	14:08	Surface	1	23.8 23.8	23.8	7.6 7.7	7.7	30.3 30.8	30.6	100.8 97.4	99.1	6.7 7.0	6.9	7.2	3.1 3.2	3.2	3.3	6.0 6.0	6.0	8.8
				Middle	4.5	23.6 23.6	23.6	7.4 7.6	7.5	30.8 30.8	30.8	92.6 91.9	92.3	7.4 7.4	7.4		3.2 3.2	3.2		5.0 5.0	5.0	
				Bottom	8	23.8 23.9	23.9	7.6 7.5	7.6	30.8 30.8	30.8	90.2 89.9	90.1	7.2 7.3	7.3		3.5 3.6	3.6		6.0 6.0	6.0	
10-Dec-08	Sunny	Calm	15:05	Surface	1	23.2 23.2	23.2	7.4 7.3	7.4	30.8 31.1	31.0	100.0 97.9	99.0	7.0 7.3	7.2	7.3	2.9 2.9	2.9	3.1	10.0 10.0	10.0	8.7
				Middle	4.5	23.1 23.1	23.1	7.3 7.3	7.3	31.0 31.1	31.1	95.5 94.8	95.2	7.4 7.4	7.4		3.0 3.0	3.0		7.0 7.0	7.0	
				Bottom	8	23.1 23.0	23.1	7.4 7.4	7.4	31.1 31.2	31.2	94.1 93.4	93.8	7.3 7.3	7.3		3.3 3.5	3.4		9.0 9.0	9.0	
12-Dec-08	Sunny	Calm	16:43	Surface	1	23.2 23.2	23.2	7.9 7.9	7.9	30.6 30.6	30.6	95.0 93.9	94.5	6.6 6.6	6.6	6.6	2.6 2.6	2.6	2.9	18.0 17.0	17.5	14.5
				Middle	4.5	22.8 22.8	22.8	7.8 8.0	7.9	30.7 30.7	30.7	90.4 87.9	89.2	6.6 6.6	6.6		2.8 2.7	2.8		16.0 16.0	16.0	
				Bottom	8	22.7 22.7	22.7	7.9 7.9	7.9	30.9 30.9	30.9	86.5 86.2	86.4	6.6 6.7	6.7		3.3 3.3	3.3		10.0 10.0	10.0	
15-Dec-08	Sunny	Moderate	10:35	Surface	1	23.0 23.0	23.0	7.8 7.8	7.8	30.9 30.9	30.9	96.8 95.1	96.0	6.9 6.9	6.9	6.9	2.4 2.5	2.5	2.7	8.0 8.0	8.0	8.5
				Middle	4.5	22.7 22.7	22.7	7.7 7.9	7.8	31.0 31.0	31.0	91.2 89.2	90.2	6.8 6.8	6.8		2.7 2.6	2.7		11.0 11.0	11.0	
				Bottom	8	22.6 22.6	22.6	7.8 7.8	7.8	31.2 31.1	31.2	88.1 87.8	88.0	6.8 6.9	6.9		3.0 3.0	3.0		6.0 7.0	6.5	
17-Dec-08	Sunny	Calm	11:10	Surface	1	23.0 22.9	23.0	7.7 7.7	7.7	30.2 30.2	30.2	97.5 97.5	97.5	6.6 6.6	6.6	6.5	2.7 2.4	2.6	2.9	3.0 3.0	3.0	2.9
				Middle	4.5	22.4 22.4	22.4	8.0 7.6	7.8	30.4 30.4	30.4	94.7 91.3	93.0	6.5 6.3	6.4		2.9 2.7	2.8		<2.5 3.0	2.8	
				Bottom	8	22.2 22.2	22.2	7.6 7.6	7.6	30.6 30.5	30.6	89.4 89.0	89.2	6.1 6.1	6.1		3.4 3.4	3.4		3.0 3.0	3.0	
19-Dec-08	Sunny	Calm	13:01	Surface	1	22.6 22.7	22.7	7.8 7.7	7.8	32.2 32.1	32.2	104.1 100.0	102.1	7.0 6.7	6.9	6.6	3.4 3.3	3.4	3.2	7.0 7.0	7.0	8.0
				Middle	4.5	22.7 22.7	22.7	7.6 7.5	7.6	32.2 32.2	32.2	94.4 94.4	94.4	6.3 6.3	6.3		2.9 2.9	2.9		9.0 9.0	9.0	
				Bottom	8	22.7 22.7	22.7	7.7 7.7	7.7	32.2 32.2	32.2	94.5 94.5	94.5	6.3 6.3	6.3		3.2 3.3	3.3		8.0 8.0	8.0	
22-Dec-08	Sunny	Calm	14:42	Surface	1	22.2 22.3	22.3	7.6 7.7	7.7	31.2 31.2	31.2	98.3 96.2	97.3	6.5 6.4	6.5	6.4	3.0 2.8	2.9	3.0	5.0 5.0	5.0	5.7
				Middle	4.5	22.0 22.0	22.0	7.5 7.6	7.6	31.3 31.3	31.3	92.4 91.3	91.9	6.2 6.1	6.2		2.9 2.8	2.9		7.0 7.0	7.0	
				Bottom	8	21.9 21.9	21.9	7.5 7.6	7.6	31.4 31.4	31.4	92.4 92.2	92.3	6.3 6.3	6.3		3.3 3.3	3.3		5.0 5.0	5.0	
24-Dec-08	Sunny	Calm	15:49	Surface	1	22.6 22.6	22.6	7.4 7.4	7.4	28.6 28.7	28.7	91.6 90.0	90.8	6.9 6.8	6.9	6.5	2.4 2.3	2.4	2.2	5.0 5.0	5.0	4.5
				Middle	4.5	22.1 22.1	22.1	7.2 7.4	7.3	30.0 30.0	30.0	80.6 78.1	79.4	6.2 6.0	6.1		1.9 1.9	1.9		4.0 3.0	3.5	
				Bottom	8	21.8 21.7	21.8	7.3 7.4	7.4	30.5 30.8	30.7	76.5 76.4	76.5	6.2 6.2	6.2		2.2 2.3	2.3		5.0 5.0	5.0	

Remarks: * DA: Depth-Averaged
 ** Calm: Small or no wave; Moderate: Between calm and rough; Rough: White capped or rougher

Water Quality Monitoring Results at I2 - Mid-Flood Tide

Date	Weather Condition	Sea Condition**	Sampling Time	Depth (m)		Water Temperature (°C)		pH		Salinity ppt		DO Saturation (%)		Dissolved Oxygen (mg/L)			Turbidity(NTU)			Suspended Solids (mg/L)		
						Value	Average	Value	Average	Value	Average	Value	Average	Value	Average	DA*	Value	Average	DA*	Value	Average	DA*
27-Dec-08	Sunny	Calm	08:42	Surface	1	21.9 21.9	21.9	7.6 7.7	7.7	29.6 29.6	29.6	102.3 102.3	102.3	7.4 7.4	7.4	7.2	1.7 1.8	1.8	2.0	13.0 13.0	13.0	10.5
				Middle	4.5	21.8 21.7	21.8	7.4 7.8	7.6	29.7 29.8	29.8	94.2 92.7	93.5	6.9 6.8	6.9		1.9 1.9	1.9		10.0 11.0	10.5	
				Bottom	8	21.7 21.7	21.7	7.4 7.5	7.5	29.9 29.9	29.9	90.8 90.3	90.6	6.6 6.6	6.6		2.3 2.4	2.4		8.0 8.0	8.0	
29-Dec-08	Cloudy	Moderate	09:00	Surface	1	19.7 19.7	19.7	6.8 7.3	7.1	34.2 34.2	34.2	90.7 90.5	90.6	6.8 6.8	6.8	6.8	2.8 2.9	2.9	3.1	8.0 8.0	8.0	7.3
				Middle	4.5	19.6 19.6	19.6	7.9 7.1	7.5	34.2 34.2	34.2	89.7 90.8	90.3	6.7 6.8	6.8		2.9 3.0	3.0		5.0 5.0	5.0	
				Bottom	8	19.6 19.6	19.6	7.7 7.9	7.8	34.3 34.3	34.3	93.0 94.1	93.6	7.0 7.1	7.1		3.3 3.4	3.4		9.0 9.0	9.0	
31-Dec-08	Cloudy	Calm	08:46	Surface	1	22.6 22.7	22.7	7.9 7.9	7.9	31.3 31.4	31.4	89.3 88.4	88.9	6.4 6.5	6.5	6.5	3.4 3.3	3.4	3.2	13.0 13.0	13.0	14.8
				Middle	4.5	22.7 22.7	22.7	7.7 8.0	7.9	31.3 31.4	31.4	88.4 87.8	88.1	6.4 6.3	6.4		2.9 2.9	2.9		11.0 11.0	11.0	
				Bottom	8	22.7 22.7	22.7	7.8 7.8	7.8	31.5 31.6	31.6	88.1 87.0	87.6	6.3 6.3	6.3		3.2 3.3	3.3		20.0 21.0	20.5	

Remarks: The reporting limit for laboratory analysis of suspended solids is 2.5 mg/L. For the results below the reporting limit, the SS level will be taken as 2.5 mg/L.

Remarks: * DA: Depth-Averaged
 ** Calm: Small or no wave; Moderate: Between calm and rough; Rough : White capped or rougher

Water Quality Monitoring Results at Intake A - Mid-Ebb Tide

Date	Weather Condition	Sea Condition**	Sampling Time	Depth (m)		Water Temperature (°C)		pH		Salinity ppt		DO Saturation (%)		Dissolved Oxygen (mg/L)			Turbidity(NTU)			Suspended Solids (mg/L)		
						Value	Average	Value	Average	Value	Average	Value	Average	Value	Average	DA*	Value	Average	DA*	Value	Average	DA*
1-Dec-08	Sunny	Calm	14:29	Surface	1	22.6 22.6	22.6	8.1 7.3	7.7	34.0 34.0	34.0	97.5 97.6	97.6	6.9 6.9	6.9	6.9	1.3 1.2	1.3	1.9	9.0 9.0	9.0	9.0
				Middle	5	22.3 22.3	22.3	7.8 8.1	8.0	34.1 34.1	34.1	95.2 94.7	95.0	6.8 6.8	6.8	2.0 2.1	2.1	10.0 10.0		10.0		
				Bottom	9	22.3 22.3	22.3	7.5 7.5	7.5	34.1 34.1	34.1	93.3 93.1	93.2	6.7 6.7	6.7	2.3 2.4	2.4	8.0 8.0		8.0		
5-Dec-08	Fine	Moderate	17:30	Surface	1	23.0 23.0	23.0	7.4 7.7	7.6	31.2 31.1	31.2	111.5 107.4	109.5	6.7 6.6	6.7	2.1 2.1	2.1	2.4	16.0 16.0	16.0	14.2	
				Middle	5	22.7 22.7	22.7	8.0 7.6	7.8	31.1 31.1	31.1	101.5 100.8	101.2	6.3 6.4	6.4	2.2 2.3	2.3		18.0 18.0	18.0		
				Bottom	9	22.6 22.6	22.6	7.9 8.3	8.1	31.1 31.1	31.1	100.0 99.1	99.6	6.4 6.4	6.4	2.8 2.9	2.9		8.0 9.0	8.5		
8-Dec-08	Sunny	Calm	09:13	Surface	1	23.4 23.5	23.5	7.9 7.7	7.8	29.6 29.5	29.6	109.0 106.9	108.0	8.0 7.9	8.0	2.3 2.5	2.4	2.8	4.0 4.0	4.0	4.3	
				Middle	5	23.3 23.3	23.3	7.8 8.0	7.9	29.9 29.9	29.9	104.8 103.0	103.9	7.3 7.2	7.3	2.7 2.8	2.8		4.0 4.0	4.0		
				Bottom	9	23.1 23.1	23.1	7.7 7.7	7.8	30.3 30.3	30.3	94.0 93.5	93.8	6.6 6.6	6.6	3.2 3.2	3.2		5.0 5.0	5.0		
10-Dec-08	Sunny	Calm	10:22	Surface	1	23.2 23.2	23.2	7.3 7.2	7.3	30.7 30.5	30.6	114.1 110.8	112.5	7.9 7.8	7.9	2.2 2.3	2.3	2.5	9.0 9.0	9.0	7.3	
				Middle	5	22.8 22.8	22.8	7.7 7.7	7.7	30.7 30.7	30.7	106.9 105.7	106.3	7.3 7.3	7.3	2.5 2.5	2.5		6.0 6.0	6.0		
				Bottom	9	22.6 22.5	22.6	7.3 7.7	7.5	31.0 31.0	31.0	100.9 100.4	100.7	7.0 7.0	7.0	2.8 2.8	2.8		7.0 7.0	7.0		
12-Dec-08	Sunny	Calm	12:07	Surface	1	23.2 23.3	23.3	8.3 8.0	8.2	30.8 30.8	30.8	112.5 108.8	110.7	6.6 6.6	6.6	2.5 2.5	2.5	2.9	13.0 13.0	13.0	13.7	
				Middle	5	23.2 23.2	23.2	8.5 8.5	8.5	30.8 30.8	30.8	102.6 101.9	102.3	6.3 6.5	6.4	2.6 2.7	2.7		13.0 13.0	13.0		
				Bottom	9	23.2 23.2	23.2	7.9 8.0	8.0	30.8 30.8	30.8	101.0 99.9	100.5	6.5 6.4	6.5	3.3 3.4	3.4		15.0 15.0	15.0		
15-Dec-08	Sunny	Moderate	13:31	Surface	1	23.1 23.1	23.1	8.3 7.8	8.1	31.0 30.9	31.0	112.0 108.1	110.1	6.9 6.9	6.9	2.3 2.3	2.3	2.6	8.0 8.0	8.0	7.7	
				Middle	5	22.9 22.9	22.9	8.1 8.2	8.2	30.9 31.0	31.0	102.0 101.3	101.7	6.6 6.8	6.7	2.4 2.5	2.5		5.0 6.0	5.5		
				Bottom	9	22.9 22.9	22.9	7.8 7.8	7.8	31.0 31.0	31.0	100.5 99.5	100.0	6.7 6.7	6.7	3.1 3.1	3.1		10.0 9.0	9.5		
17-Dec-08	Sunny	Calm	16:09	Surface	1	23.2 23.2	23.2	8.0 7.6	7.8	30.4 30.4	30.4	115.4 112.2	113.8	7.6 7.4	7.5	2.5 2.7	2.6	2.9	3.0 3.0	3.0	3.2	
				Middle	5	22.9 22.9	22.9	8.1 8.3	8.2	30.4 30.5	30.5	105.6 104.9	105.3	7.0 6.9	7.0	2.5 2.6	2.6		3.0 4.0	3.5		
				Bottom	9	22.9 22.9	22.9	7.8 7.9	7.9	30.4 30.4	30.4	103.8 102.3	103.1	6.9 6.8	6.9	3.5 3.7	3.6		3.0 3.0	3.0		
19-Dec-08	Cloudy	Calm	17:10	Surface	1	22.3 22.5	22.4	8.4 7.7	8.1	32.6 32.3	32.5	105.7 100.3	103.0	7.1 6.7	6.9	2.6 2.5	2.6	2.9	11.0 11.0	11.0	9.0	
				Middle	5	22.7 22.7	22.7	8.6 8.5	8.6	32.2 32.2	32.2	95.2 94.7	95.0	6.4 6.3	6.4	3.0 2.9	3.0		10.0 10.0	10.0		
				Bottom	9	22.7 22.7	22.7	7.8 8.0	7.9	32.3 32.2	32.3	94.4 94.4	94.4	6.3 6.3	6.3	3.0 2.9	3.0		6.0 6.0	6.0		
22-Dec-08	Sunny	Calm	08:36	Surface	1	22.3 22.3	22.3	7.7 7.5	7.6	31.1 31.1	31.1	96.8 95.1	96.0	6.5 6.4	6.5	3.7 3.8	3.8	4.1	3.0 3.0	3.0	4.5	
				Middle	5.5	21.8 21.8	21.8	8.4 8.4	8.4	31.1 31.2	31.2	91.5 91.1	91.3	6.2 6.2	6.2	4.0 4.1	4.1		4.0 4.0	4.0		
				Bottom	10	21.7 21.7	21.7	7.3 8.2	7.8	31.4 31.3	31.4	88.1 87.9	88.0	6.0 6.0	6.0	4.4 4.3	4.4		6.0 7.0	6.5		
24-Dec-08	Sunny	Calm	09:23	Surface	1	22.2 22.2	22.2	7.7 7.6	7.7	28.7 28.7	28.7	92.7 92.1	92.4	7.0 7.0	7.0	1.6 1.7	1.7	1.8	5.0 5.0	5.0	3.4	
				Middle	5.5	21.3 21.3	21.3	8.0 8.0	8.0	30.8 30.9	30.9	88.6 88.0	88.3	6.8 6.7	6.8	1.7 1.8	1.8		<2.5 <2.5	<2.5		
				Bottom	10	22.0 22.0	22.0	7.6 8.0	7.8	30.2 30.6	30.4	88.1 84.1	86.1	6.7 6.5	6.6	1.9 2.1	2.0		<2.5 3.0	2.8		
27-Dec-08	Sunny	Calm	12:19	Surface	1	21.9 21.8	21.9	8.0 7.2	7.6	29.1 29.3	29.2	106.5 103.4	105.0	7.7 7.5	7.6	0.8 0.9	0.9	1.4	8.0 8.0	8.0	8.3	
				Middle	5	21.2 21.2	21.2	8.5 8.6	8.6	30.4 30.4	30.4	78.7 78.8	78.8	5.8 5.8	5.8	1.2 1.3	1.3		6.0 6.0	6.0		
				Bottom	9	21.2 21.2	21.2	7.3 8.2	7.8	30.3 30.4	30.4	82.0 82.4	82.2	6.2 6.2	6.2	1.8 1.9	1.9		11.0 11.0	11.0		

Remarks: * DA: Depth-Averaged
 ** Calm: Small or no wave; Moderate: Between calm and rough; Rough : White capped or rougher

Water Quality Monitoring Results at Intake A - Mid-Ebb Tide

Date	Weather Condition	Sea Condition**	Sampling Time	Depth (m)		Water Temperature (°C)		pH		Salinity ppt		DO Saturation (%)		Dissolved Oxygen (mg/L)			Turbidity(NTU)			Suspended Solids (mg/L)		
						Value	Average	Value	Average	Value	Average	Value	Average	Value	Average	DA*	Value	Average	DA*	Value	Average	DA*
29-Dec-08	Cloudy	Moderate	13:45	Surface	1	19.7 19.7	19.7	8.1 7.2	7.7	34.1 34.1	34.1	95.1 94.8	95.0	7.1 7.1	7.1	7.8	2.1 2.3	2.2	2.5	11.0 11.0	11.0	9.5
				Middle	5	19.6 19.6	19.6	7.7 8.2	8.0	34.2 34.2	34.2	110.8 114.6	112.7	8.3 8.6	8.5		2.1 2.3	2.2		7.0 8.0	7.5	
				Bottom	9	19.6 19.6	19.6	7.2 7.4	7.3	34.2 34.2	34.2	77.0 95.4	86.2	5.8 7.2	6.5		3.1 3.2	3.2		10.0 10.0	10.0	
31-Dec-08	Cloudy	Calm	14:50	Surface	1	22.3 22.5	22.4	8.3 7.8	8.1	27.3 27.3	27.3	89.4 90.1	89.8	7.2 7.2	7.2	6.7	2.6 2.5	2.6	2.9	14.0 14.0	14.0	14.0
				Middle	5	22.7 22.7	22.7	8.2 8.3	8.3	28.2 28.1	28.2	91.4 88.4	89.9	6.3 6.1	6.2		3.0 2.9	3.0		14.0 14.0	14.0	
				Bottom	9	22.7 22.7	22.7	7.9 7.9	7.9	29.0 29.0	29.0	82.9 82.4	82.7	6.1 6.1	6.1		3.0 2.9	3.0		14.0 14.0	14.0	

Remarks: The reporting limit for laboratory analysis of suspended solids is 2.5 mg/L. For the results below the reporting limit, the SS level will be taken as 2.5 mg/L.

Remarks: * DA: Depth-Averaged
 ** Calm: Small or no wave; Moderate: Between calm and rough; Rough : White capped or rougher

Water Quality Monitoring Results at Intake A - Mid-Flood Tide

Date	Weather Condition	Sea Condition**	Sampling Time	Depth (m)		Water Temperature (°C)		pH		Salinity ppt		DO Saturation (%)		Dissolved Oxygen (mg/L)			Turbidity(NTU)			Suspended Solids (mg/L)		
						Value	Average	Value	Average	Value	Average	Value	Average	Value	Average	DA*	Value	Average	DA*	Value	Average	DA*
1-Dec-08	Sunny	Calm	09:22	Surface	1	22.5 22.5	22.5	7.3 7.4	7.4	34.1 34.1	34.1	100.6 100.6	100.6	7.2 7.2	7.2	7.1	1.2 1.3	1.3	2.1	12.0 12.0	12.0	13.3
				Middle	5	22.2 22.2	22.2	7.7 7.6	7.7	34.1 34.1	34.1	96.7 96.6	96.7	6.9 6.9	6.9		2.2 2.3	2.3		18.0 18.0	18.0	
				Bottom	9	22.2 22.2	22.2	7.8 7.9	7.9	34.1 34.1	34.1	96.0 96.0	96.0	6.9 6.9	6.9		2.6 2.8	2.7		10.0 10.0	10.0	
3-Dec-08	Sunny	Calm	15:39	Surface	1	22.5 22.5	22.5	7.9 8.0	8.0	30.6 31.2	30.9	86.2 82.5	84.4	6.4 6.0	6.2	6.6	2.0 2.2	2.1	2.3	7.0 7.0	7.0	7.3
				Middle	5	22.4 22.3	22.4	7.9 7.7	7.8	30.0 30.0	30.0	96.4 94.5	95.5	7.0 6.9	7.0		2.1 2.1	2.1		9.0 9.0	9.0	
				Bottom	9	22.4 22.4	22.4	7.9 8.3	8.1	30.8 30.8	30.8	86.4 85.5	86.0	6.0 6.3	6.2		2.5 2.6	2.6		6.0 6.0	6.0	
5-Dec-08	Sunny	Moderate	13:15	Surface	1	23.0 23.0	23.0	7.5 7.7	7.6	31.4 31.4	31.4	100.3 100.8	100.6	6.3 6.6	6.5	6.5	2.2 2.3	2.3	2.6	9.0 9.0	9.0	10.0
				Middle	5	22.9 22.9	22.9	8.0 8.0	8.0	31.4 31.4	31.4	96.8 95.9	96.4	6.5 6.4	6.5		2.5 2.6	2.6		9.0 9.0	9.0	
				Bottom	9	22.8 22.8	22.8	7.9 8.0	8.0	31.4 31.4	31.4	94.5 93.5	94.0	6.2 6.2	6.2		2.9 3.0	3.0		12.0 12.0	12.0	
8-Dec-08	Sunny	Calm	15:52	Surface	1	24.1 24.1	24.1	7.6 7.7	7.7	30.7 30.8	30.8	98.8 96.9	97.9	6.9 6.8	6.9	6.8	2.8 2.9	2.9	3.2	5.0 5.0	5.0	7.3
				Middle	5	23.9 23.9	23.9	7.9 7.7	7.8	30.9 31.0	31.0	94.2 96.3	95.3	6.6 6.8	6.7		3.2 3.3	3.3		5.0 5.0	5.0	
				Bottom	9	23.5 23.5	23.5	7.9 8.0	8.0	31.3 31.3	31.3	91.6 90.6	91.1	6.5 6.4	6.5		3.5 3.5	3.5		5.0 6.0	5.5	
10-Dec-08	Sunny	Calm	14:52	Surface	1	23.4 23.4	23.4	7.3 7.4	7.4	31.1 31.1	31.1	98.1 97.3	97.7	7.2 7.2	7.2	7.2	2.3 2.4	2.4	2.7	10.0 10.0	10.0	9.0
				Middle	5.5	23.2 23.2	23.2	7.7 7.4	7.6	31.2 31.2	31.2	96.3 97.3	96.8	7.1 7.1	7.1		2.6 2.7	2.7		6.0 6.0	6.0	
				Bottom	10	22.9 22.9	22.9	7.5 7.8	7.7	31.6 31.7	31.7	94.4 92.9	93.7	6.9 6.9	6.9		2.8 2.9	2.9		11.0 11.0	11.0	
12-Dec-08	Sunny	Calm	16:31	Surface	1	23.5 23.5	23.5	8.2 8.1	8.2	30.7 30.7	30.7	104.3 104.3	104.3	6.3 6.8	6.6	6.7	2.7 2.8	2.8	3.1	7.0 8.0	7.5	11.0
				Middle	5	23.2 23.3	23.3	8.2 8.2	8.2	30.8 30.8	30.8	99.9 98.5	99.2	6.7 6.6	6.7		2.9 3.0	3.0		10.0 10.0	10.0	
				Bottom	9	23.1 23.1	23.1	8.5 8.7	8.6	30.8 30.8	30.8	96.8 95.4	96.1	6.3 6.4	6.4		3.3 3.6	3.5		16.0 15.0	15.5	
15-Dec-08	Sunny	Moderate	10:21	Surface	1	23.2 23.3	23.3	7.8 8.0	7.9	31.0 31.0	31.0	102.3 102.5	102.4	6.6 7.0	6.8	6.9	2.4 2.5	2.5	2.8	6.0 6.0	6.0	8.0
				Middle	5	23.1 23.1	23.1	7.9 7.9	7.9	31.1 31.1	31.1	98.3 97.2	97.8	6.9 6.8	6.9		2.7 2.8	2.8		11.0 11.0	11.0	
				Bottom	9	23.0 22.9	23.0	8.0 8.1	8.1	31.1 31.1	31.1	95.6 94.4	95.0	6.5 6.6	6.6		3.1 3.3	3.2		7.0 7.0	7.0	
17-Dec-08	Sunny	Calm	11:18	Surface	1	23.3 23.3	23.3	7.7 7.8	7.8	30.4 30.4	30.4	108.6 108.1	108.4	7.1 7.1	7.1	7.0	2.6 2.7	2.7	3.0	3.0 3.0	3.0	3.2
				Middle	5	23.0 23.0	23.0	7.9 7.9	7.9	30.5 30.5	30.5	103.4 101.6	102.5	6.8 6.7	6.8		2.8 2.9	2.9		3.0 4.0	3.5	
				Bottom	9	22.8 22.8	22.8	8.0 8.2	8.1	30.4 30.4	30.4	99.6 97.9	98.8	6.6 6.5	6.6		3.3 3.7	3.5		3.0 3.0	3.0	
19-Dec-08	Sunny	Calm	12:45	Surface	1	22.6 22.6	22.6	7.9 7.8	7.9	32.2 32.2	32.2	93.2 94.5	93.9	6.2 6.3	6.3	6.4	3.4 3.4	3.4	3.4	7.0 7.0	7.0	6.5
				Middle	5	22.7 22.7	22.7	8.1 8.0	8.1	32.3 32.3	32.3	95.1 95.1	95.1	6.5 6.5	6.5		3.4 3.4	3.4		4.0 5.0	4.5	
				Bottom	9	22.7 22.7	22.7	8.3 8.4	8.4	32.3 32.3	32.3	90.2 89.8	90.0	6.0 6.0	6.0		3.5 3.5	3.5		8.0 8.0	8.0	
22-Dec-08	Sunny	Calm	14:31	Surface	1	22.0 22.0	22.0	7.6 7.7	7.7	29.9 31.2	30.6	96.6 96.0	96.3	6.5 6.4	6.5	6.4	3.0 2.8	2.9	3.2	6.0 7.0	6.5	6.5
				Middle	4.5	22.1 22.1	22.1	8.2 7.6	7.9	31.3 31.2	31.3	90.1 89.8	90.0	6.4 6.0	6.2		3.1 3.2	3.2		6.0 6.0	6.0	
				Bottom	8	22.0 22.0	22.0	7.7 8.3	8.0	31.2 31.3	31.3	90.2 90.2	90.2	6.2 6.2	6.2		3.4 3.6	3.5		7.0 7.0	7.0	
24-Dec-08	Sunny	Calm	15:42	Surface	1	22.4 22.4	22.4	7.4 7.4	7.4	29.6 29.6	29.6	94.5 90.6	92.6	7.1 6.9	7.0	6.7	2.4 2.4	2.4	2.4	3.0 3.0	3.0	3.3
				Middle	5	22.3 22.3	22.3	7.7 7.7	7.7	29.6 29.6	29.6	82.6 80.8	81.7	6.3 6.2	6.3		2.4 2.4	2.4		4.0 4.0	4.0	
				Bottom	9	22.1 22.0	22.1	7.7 8.0	7.9	30.1 30.2	30.2	78.8 78.6	78.7	6.2 6.2	6.2		2.5 2.5	2.5		3.0 3.0	3.0	

Remarks: * DA: Depth-Averaged

** Calm: Small or no wave; Moderate: Between calm and rough; Rough: White capped or rougher

Water Quality Monitoring Results at Intake A - Mid-Flood Tide

Date	Weather Condition	Sea Condition**	Sampling Time	Depth (m)		Water Temperature (°C)		pH		Salinity ppt		DO Saturation (%)		Dissolved Oxygen (mg/L)			Turbidity(NTU)			Suspended Solids (mg/L)		
						Value	Average	Value	Average	Value	Average	Value	Average	Value	Average	DA*	Value	Average	DA*	Value	Average	DA*
27-Dec-08	Sunny	Calm	08:26	Surface	1	21.6 21.6	21.6	7.5 7.7	7.6	29.7 29.7	29.7	93.8 91.4	92.6	6.8 6.7	6.8	6.5	1.2 1.1	1.2	1.7	6.0 7.0	6.5	8.5
				Middle	5	21.5 21.5	21.5	8.2 7.6	7.9	29.9 29.9	29.9	83.5 83.0	83.3	6.2 6.1	6.2		1.8 1.8	1.8		12.0 12.0	12.0	
				Bottom	9	21.5 21.5	21.5	7.6 8.5	8.1	29.9 29.9	29.9	81.5 81.5	81.5	6.0 6.0	6.0		2.0 2.1	2.1		7.0 7.0	7.0	
29-Dec-08	Cloudy	Moderate	08:47	Surface	1	19.7 19.7	19.7	7.8 7.4	7.6	34.1 34.1	34.1	93.3 93.5	93.4	7.0 7.0	7.0	7.0	2.2 2.1	2.2	2.4	7.0 8.0	7.5	8.8
				Middle	5	19.6 19.6	19.6	8.0 7.3	7.7	34.1 34.2	34.2	91.3 91.5	91.4	6.8 6.9	6.9		2.0 2.3	2.2		11.0 11.0	11.0	
				Bottom	9	19.6 19.6	19.6	8.0 7.5	7.8	34.2 34.2	34.2	81.5 82.3	81.9	6.1 6.2	6.2		2.7 2.7	2.7		8.0 8.0	8.0	
31-Dec-08	Cloudy	Calm	08:36	Surface	1	22.6 22.6	22.6	8.0 8.0	8.0	31.5 31.5	31.5	87.5 87.7	87.6	6.6 6.6	6.6	6.6	3.4 3.4	3.4	3.4	10.0 11.0	10.5	11.5
				Middle	5.5	22.7 22.7	22.7	8.1 8.0	8.1	31.5 31.5	31.5	88.5 88.4	88.5	6.5 6.4	6.5		3.4 3.4	3.4		14.0 14.0	14.0	
				Bottom	10	22.7 22.7	22.7	8.3 8.3	8.3	32.0 32.1	32.1	87.2 85.3	86.3	6.4 6.3	6.4		3.5 3.5	3.5		10.0 10.0	10.0	

Remarks: * DA: Depth-Averaged
 ** Calm: Small or no wave; Moderate: Between calm and rough; Rough : White capped or rougher

Water Quality Monitoring Results at intake B - Mid-Ebb Tide

Date	Weather Condition	Sea Condition**	Sampling Time	Depth (m)		Water Temperature (°C)		pH		Salinity ppt		DO Saturation (%)		Dissolved Oxygen (mg/L)			Turbidity(NTU)			Suspended Solids (mg/L)		
						Value	Average	Value	Average	Value	Average	Value	Average	Value	Average	DA*	Value	Average	DA*	Value	Average	DA*
1-Dec-08	Sunny	Calm	14:03	Surface	1	22.4 22.4	22.4	7.1 7.5	7.3	34.1 34.1	34.1	97.1 97.0	97.1	6.9 6.9	6.9	6.9	1.7 1.9	1.8	2.0	8.0 8.0	8.0	8.5
				Middle	6	22.3 22.3	22.3	7.7 7.2	7.5	34.1 34.1	34.1	95.9 95.5	95.7	6.8 6.8	6.8	6.8	2.0 2.0	2.0		11.0 10.0	10.5	
				Bottom	11	22.3 22.3	22.3	7.7 7.9	7.8	34.1 34.1	34.1	94.7 94.7	94.7	6.8 6.8	6.8	6.8	2.3 2.3	2.3		7.0 7.0	7.0	
5-Dec-08	Fine	Moderate	18:07	Surface	1	22.6 22.6	22.6	7.8 7.5	7.7	31.1 31.0	31.1	109.4 103.3	106.4	6.6 6.5	6.6	6.5	2.4 2.5	2.5	2.9	10.0 10.0	10.0	12.3
				Middle	6	22.3 22.3	22.3	8.5 8.4	8.5	31.3 31.3	31.3	89.8 89.0	89.4	6.3 6.5	6.4	6.4	2.8 2.9	2.9		13.0 13.0	13.0	
				Bottom	11	22.2 22.2	22.2	7.5 8.0	7.8	31.4 31.5	31.5	86.4 86.0	86.2	6.3 6.2	6.3	6.3	3.4 3.3	3.4		14.0 14.0	14.0	
8-Dec-08	Sunny	Calm	09:51	Surface	1	23.5 23.6	23.6	7.5 7.6	7.6	30.2 30.3	30.3	108.3 104.8	106.6	7.4 7.3	7.4	7.1	3.4 3.5	3.5	3.8	5.0 5.0	5.0	4.8
				Middle	6	23.3 23.3	23.3	7.7 7.6	7.7	30.6 30.8	30.7	93.8 90.9	92.4	6.7 6.6	6.7	6.7	3.7 3.8	3.8		4.0 4.0	4.0	
				Bottom	11	23.2 23.1	23.2	7.7 7.9	7.8	31.2 30.8	31.0	87.7 91.4	89.6	6.4 6.6	6.5	6.5	4.2 4.2	4.2		5.0 6.0	5.5	
10-Dec-08	Sunny	Calm	10:56	Surface	1	22.7 22.8	22.8	7.6 7.3	7.5	30.8 30.9	30.9	114.3 109.5	111.9	7.7 7.5	7.6	7.3	2.9 3.0	3.0	3.3	10.0 10.0	10.0	7.8
				Middle	6	22.5 22.5	22.5	7.6 7.8	7.7	31.1 31.2	31.2	97.2 95.5	96.4	7.0 7.0	7.0	7.0	3.1 3.2	3.2		5.0 6.0	5.5	
				Bottom	11	22.4 22.6	22.5	7.4 7.5	7.5	31.5 31.3	31.4	92.9 94.6	93.8	6.8 6.9	6.9	6.9	3.6 3.6	3.6		8.0 8.0	8.0	
12-Dec-08	Sunny	Calm	12:45	Surface	1	22.7 22.8	22.8	7.9 8.0	8.0	30.7 30.6	30.7	108.5 102.4	105.5	6.4 6.3	6.4	6.5	3.0 3.3	3.2	3.9	11.0 11.0	11.0	10.5
				Middle	6	22.3 22.3	22.3	8.3 8.0	8.2	31.0 30.9	31.0	88.9 88.0	88.5	6.4 6.5	6.5	6.5	3.7 4.0	3.9		13.0 13.0	13.0	
				Bottom	11	22.2 22.2	22.2	8.2 8.6	8.4	31.1 31.2	31.2	85.1 84.6	84.9	6.4 6.3	6.4	6.4	4.7 4.7	4.7		7.0 8.0	7.5	
15-Dec-08	Sunny	Moderate	14:12	Surface	1	22.7 22.7	22.7	7.7 7.9	7.8	30.9 30.8	30.9	108.9 102.8	105.9	6.8 6.7	6.8	6.8	2.7 2.9	2.8	3.3	7.0 7.0	7.0	7.0
				Middle	6	22.3 22.3	22.3	7.9 7.7	7.8	31.1 31.1	31.1	89.3 88.5	88.9	6.6 6.8	6.7	6.7	3.2 3.4	3.3		7.0 7.0	7.0	
				Bottom	11	22.2 22.2	22.2	7.9 8.1	8.0	31.3 31.3	31.3	85.7 85.3	85.5	6.7 6.6	6.7	6.7	3.8 3.9	3.9		7.0 7.0	7.0	
17-Dec-08	Sunny	Calm	16:27	Surface	1	22.4 22.5	22.5	7.6 7.7	7.7	30.3 30.3	30.3	107.9 101.9	104.9	7.2 6.8	7.0	6.5	3.0 3.4	3.2	4.0	<2.5 <2.5	<2.5	<2.5
				Middle	6	21.7 21.7	21.7	8.0 7.8	7.9	30.7 30.6	30.7	88.4 87.2	87.8	6.0 5.9	6.0	6.0	3.7 4.3	4.0		<2.5 <2.5	<2.5	
				Bottom	11	21.6 21.5	21.6	7.9 8.0	8.0	30.9 30.9	30.9	88.6 88.2	88.4	6.1 6.0	6.1	6.1	4.7 5.0	4.9		<2.5 <2.5	<2.5	
19-Dec-08	Cloudy	Calm	17:45	Surface	1	22.3 22.4	22.4	7.9 8.0	8.0	32.2 32.1	32.2	112.0 105.8	108.9	7.5 7.1	7.3	6.8	3.7 3.8	3.8	4.1	7.0 7.0	7.0	9.0
				Middle	6	22.7 22.7	22.7	8.2 7.9	8.1	32.3 32.3	32.3	92.2 92.0	92.1	6.2 6.1	6.2	6.2	3.9 4.0	4.0		10.0 10.0	10.0	
				Bottom	11	22.7 22.7	22.7	8.1 8.3	8.2	32.3 32.3	32.3	90.7 90.6	90.7	6.1 6.1	6.1	6.1	4.4 4.4	4.4		10.0 10.0	10.0	
22-Dec-08	Sunny	Calm	09:11	Surface	1	22.2 22.3	22.3	8.4 7.5	8.0	31.5 31.3	31.4	110.5 106.2	108.4	7.4 7.1	7.3	7.0	2.5 2.6	2.6	2.9	5.0 5.0	5.0	5.7
				Middle	5	22.3 22.3	22.3	8.3 8.4	8.4	31.3 31.3	31.3	100.4 99.8	100.1	6.7 6.6	6.7	6.7	2.7 2.7	2.7		6.0 6.0	6.0	
				Bottom	9	22.2 22.2	22.2	7.7 7.7	7.7	31.3 31.3	31.3	99.1 98.3	98.7	6.6 6.5	6.6	6.6	3.2 3.3	3.3		6.0 6.0	6.0	
24-Dec-08	Sunny	Calm	09:53	Surface	1	22.1 22.1	22.1	7.9 7.6	7.8	30.2 30.1	30.2	92.2 89.3	90.8	7.0 6.8	6.9	6.6	1.7 1.6	1.7	1.7	<2.5 <2.5	<2.5	3.3
				Middle	5	21.9 22.0	22.0	8.0 8.1	8.1	30.3 30.3	30.3	81.6 81.6	81.6	6.3 6.3	6.3	6.3	1.5 1.7	1.6		4.0 4.0	4.0	
				Bottom	9	21.5 21.5	21.5	7.6 8.0	7.8	31.0 31.0	31.0	77.6 78.0	77.8	6.1 6.1	6.1	6.1	1.8 1.8	1.8		3.0 4.0	3.5	
27-Dec-08	Sunny	Calm	12:55	Surface	1	21.8 21.8	21.8	8.5 7.6	8.1	29.4 29.4	29.4	93.1 92.8	93.0	6.8 6.8	6.8	6.5	2.1 2.0	2.1	2.5	9.0 10.0	9.5	9.8
				Middle	6	21.7 21.8	21.8	8.2 8.5	8.4	29.8 29.8	29.8	84.8 83.9	84.4	6.2 6.2	6.2	6.2	2.4 2.4	2.4		12.0 12.0	12.0	
				Bottom	11	22.1 22.1	22.1	7.7 7.7	7.7	30.2 30.2	30.2	82.4 82.2	82.3	6.0 6.0	6.0	6.0	2.9 2.8	2.9		8.0 8.0	8.0	

Remarks: * DA: Depth-Averaged
 ** Calm: Small or no wave; Moderate: Between calm and rough; Rough : White capped or rougher

Water Quality Monitoring Results at intake B - Mid-Ebb Tide

Date	Weather Condition	Sea Condition**	Sampling Time	Depth (m)		Water Temperature (°C)		pH		Salinity ppt		DO Saturation (%)		Dissolved Oxygen (mg/L)			Turbidity(NTU)			Suspended Solids (mg/L)		
						Value	Average	Value	Average	Value	Average	Value	Average	Value	Average	DA*	Value	Average	DA*	Value	Average	DA*
29-Dec-08	Cloudy	Moderate	14:22	Surface	1	19.6 19.6	19.6	7.2 7.2	7.2	34.3 34.3	34.3	100.4 100.2	100.3	7.5 7.5	7.5	7.5	2.3 2.1	2.2	2.5	10.0 10.0	10.0	8.8
				Middle	6	19.6 19.6	19.6	7.0 7.3	7.2	34.3 34.3	34.3	100.7 100.3	100.5	7.5 7.5	7.5		2.3 2.5	2.4		8.0 8.0	8.0	
				Bottom	11	19.6 19.6	19.6	7.2 7.3	7.3	34.3 34.3	34.3	105.0 105.1	105.1	7.9 7.9	7.9		7.9	2.9 3.1		3.0	8.0 9.0	
31-Dec-08	Cloudy	Calm	15:32	Surface	1	22.3 22.4	22.4	7.8 7.9	7.9	29.0 29.1	29.1	96.0 95.5	95.8	6.8 6.8	6.8	6.5	3.7 3.8	3.8	4.1	13.0 14.0	13.5	15.2
				Middle	6	22.7 22.7	22.7	8.2 7.8	8.0	29.4 29.7	29.6	86.6 81.4	84.0	6.2 5.9	6.1		3.9 4.0	4.0		18.0 18.0	18.0	
				Bottom	11	22.7 22.7	22.7	8.1 8.3	8.2	30.5 29.7	30.1	84.0 84.6	84.3	6.1 6.1	6.1		6.1	4.4 4.4		4.4	14.0 14.0	

Remarks: The reporting limit for laboratory analysis of suspended solids is 2.5 mg/L. For the results below the reporting limit, the SS level will be taken as 2.5 mg/L.

Remarks: * DA: Depth-Averaged
 ** Calm: Small or no wave; Moderate: Between calm and rough; Rough : White capped or rougher

Water Quality Monitoring Results at Intake B - Mid-Flood Tide

Date	Weather Condition	Sea Condition**	Sampling Time	Depth (m)		Water Temperature (°C)		pH		Salinity ppt		DO Saturation (%)		Dissolved Oxygen (mg/L)			Turbidity(NTU)			Suspended Solids (mg/L)		
						Value	Average	Value	Average	Value	Average	Value	Average	Value	Average	DA*	Value	Average	DA*	Value	Average	DA*
1-Dec-08	Sunny	Calm	09:50	Surface	1	22.4 22.4	22.4	8.2 8.1	8.2	34.2 34.2	34.2	101.3 100.8	101.1	7.2 7.2	7.2	7.2	1.5 1.5	1.5	1.8	9.0 9.0	9.0	8.8
				Middle	6	22.3 22.3	22.3	7.7 7.5	7.6	34.2 34.2	34.2	99.7 99.0	99.4	7.1 7.1	7.1		1.6 1.6	1.6		11.0 11.0	11.0	
				Bottom	11	22.2 22.2	22.2	7.5 7.5	7.5	34.2 34.2	34.2	98.4 98.2	98.3	7.0 7.0	7.0		2.2 2.3	2.3		6.0 7.0	6.5	
3-Dec-08	Sunny	Calm	15:58	Surface	1	22.3 22.3	22.3	7.9 7.8	7.9	31.0 31.0	31.0	85.8 85.8	85.8	6.3 6.3	6.3	6.5	2.0 2.0	2.0	2.3	9.0 8.0	8.5	8.2
				Middle	6	22.8 22.8	22.8	7.8 7.7	7.8	30.3 30.4	30.4	91.3 90.3	90.8	6.8 6.6	6.7		2.4 2.4	2.4		9.0 9.0	9.0	
				Bottom	11	22.5 22.5	22.5	7.9 7.8	7.9	30.8 30.5	30.7	86.6 86.2	86.4	6.4 6.4	6.4		2.5 2.6	2.6		7.0 7.0	7.0	
5-Dec-08	Sunny	Moderate	13:56	Surface	1	22.3 22.3	22.3	8.1 8.0	8.1	31.4 31.4	31.4	95.3 95.2	95.3	6.7 6.6	6.7	6.5	2.0 2.1	2.1	2.6	14.0 13.0	13.5	9.5
				Middle	6	22.3 22.3	22.3	7.8 7.9	7.9	31.4 31.4	31.4	86.1 85.5	85.8	6.2 6.2	6.2		2.6 2.8	2.7		7.0 7.0	7.0	
				Bottom	11	22.3 22.3	22.3	8.0 7.8	7.9	31.4 31.0	31.2	84.4 84.2	84.3	6.2 6.2	6.2		2.8 2.9	2.9		8.0 8.0	8.0	
8-Dec-08	Sunny	Calm	14:32	Surface	1	24.1 24.0	24.1	8.1 7.9	8.0	31.2 31.3	31.3	98.6 98.5	98.6	7.2 7.2	7.2	7.2	2.9 2.9	2.9	3.4	5.0 5.0	5.0	7.8
				Middle	6	23.9 23.9	23.9	7.9 7.8	7.9	31.4 31.6	31.5	97.1 96.6	96.9	7.1 7.1	7.1		3.4 3.5	3.5		5.0 6.0	5.5	
				Bottom	11	23.6 23.6	23.6	7.8 7.8	7.8	30.9 30.4	30.7	90.5 90.3	90.4	6.5 6.5	6.5		3.7 3.8	3.8		6.0 6.0	6.0	
10-Dec-08	Sunny	Calm	15:30	Surface	1	23.2 23.2	23.2	7.8 7.7	7.8	31.6 31.6	31.6	98.4 99.0	98.7	7.4 7.4	7.4	7.4	2.4 2.4	2.4	2.7	10.0 10.0	10.0	8.8
				Middle	6	23.1 23.1	23.1	7.6 7.5	7.6	31.8 32.1	32.0	99.1 96.5	97.8	7.5 7.1	7.3		2.6 2.7	2.7		7.0 8.0	7.5	
				Bottom	11	22.8 22.8	22.8	7.5 7.6	7.6	32.0 31.5	31.8	94.2 94.2	94.2	6.9 6.9	6.9		2.9 3.0	3.0		9.0 9.0	9.0	
12-Dec-08	Sunny	Calm	17:09	Surface	1	22.5 22.5	22.5	8.7 8.5	8.6	30.8 30.8	30.8	90.4 90.2	90.3	6.6 6.3	6.5	6.5	2.8 3.0	2.9	3.6	11.0 11.0	11.0	14.8
				Middle	6	22.3 22.4	22.4	8.3 8.2	8.3	30.8 30.8	30.8	84.5 83.6	84.1	6.5 6.5	6.5		3.7 3.8	3.8		16.0 15.0	15.5	
				Bottom	11	22.3 22.3	22.3	8.2 8.1	8.2	30.9 30.9	30.9	82.2 81.9	82.1	6.4 6.4	6.4		4.1 4.2	4.2		18.0 18.0	18.0	
15-Dec-08	Sunny	Moderate	10:58	Surface	1	22.4 22.4	22.4	8.3 8.2	8.3	31.1 31.1	31.1	92.8 92.7	92.8	6.9 6.7	6.8	6.8	2.0 2.0	2.0	2.9	8.0 7.0	7.5	6.8
				Middle	6	22.3 22.3	22.3	8.0 7.8	7.9	31.1 31.1	31.1	85.3 84.5	84.9	6.7 6.6	6.7		3.1 3.1	3.1		7.0 7.0	7.0	
				Bottom	11	22.3 22.3	22.3	7.8 7.8	7.8	31.1 30.9	31.0	83.3 83.0	83.2	6.6 6.6	6.6		3.4 3.5	3.5		6.0 6.0	6.0	
17-Dec-08	Sunny	Calm	11:32	Surface	1	22.1 22.1	22.1	8.5 8.3	8.4	30.4 30.4	30.4	93.8 93.5	93.7	6.5 6.5	6.5	6.5	2.8 2.9	2.9	3.5	<2.5 <2.5	<2.5	2.8
				Middle	6	21.8 21.9	21.9	8.0 7.7	7.9	30.5 30.5	30.5	90.9 89.7	90.3	6.4 6.3	6.4		3.0 3.1	3.1		3.0 3.0	3.0	
				Bottom	11	21.8 21.8	21.8	7.8 7.7	7.8	30.7 30.7	30.7	88.0 87.5	87.8	6.2 6.1	6.2		4.4 4.7	4.6		3.0 3.0	3.0	
19-Dec-08	Sunny	Calm	13:26	Surface	1	22.3 22.4	22.4	8.6 8.3	8.5	32.3 32.3	32.3	103.0 103.0	103.0	6.9 6.9	6.9	6.4	2.7 2.8	2.8	3.2	8.0 8.0	8.0	8.2
				Middle	6	22.7 22.7	22.7	8.2 8.2	8.2	32.2 32.1	32.2	88.1 88.1	88.1	5.9 5.9	5.9		3.3 3.4	3.4		11.0 11.0	11.0	
				Bottom	11	22.7 22.7	22.7	8.0 7.8	7.9	32.0 30.9	31.5	90.7 89.9	90.3	6.2 6.0	6.1		3.3 3.3	3.3		5.0 6.0	5.5	
22-Dec-08	Sunny	Calm	15:06	Surface	1	21.7 21.7	21.7	8.6 8.3	8.5	31.4 31.4	31.4	94.9 94.7	94.8	6.4 6.4	6.4	6.4	3.3 3.0	3.2	3.6	6.0 7.0	6.5	6.3
				Middle	6	21.7 21.7	21.7	8.1 7.7	7.9	31.3 31.3	31.3	91.0 91.4	91.2	6.3 6.3	6.3		3.6 3.7	3.7		6.0 6.0	6.0	
				Bottom	11	21.7 21.7	21.7	7.7 7.6	7.7	31.3 30.8	31.1	92.3 92.2	92.3	6.3 6.3	6.3		3.8 4.0	3.9		6.0 7.0	6.5	
24-Dec-08	Sunny	Calm	16:25	Surface	1	22.5 22.5	22.5	7.8 7.8	7.8	28.9 28.9	28.9	94.9 94.4	94.7	7.2 7.1	7.2	7.0	1.7 1.8	1.8	2.2	3.0 3.0	3.0	3.2
				Middle	6	22.2 22.1	22.2	7.6 7.7	7.7	29.6 29.7	29.7	87.3 86.3	86.8	6.7 6.6	6.7		2.3 2.4	2.4		4.0 3.0	3.5	
				Bottom	11	21.9 21.9	21.9	7.7 7.7	7.7	30.0 30.0	30.0	80.8 80.5	80.7	6.2 6.2	6.2		2.3 2.3	2.3		3.0 3.0	3.0	

Remarks: * DA: Depth-Averaged

** Calm: Small or no wave; Moderate: Between calm and rough; Rough : White capped or rougher

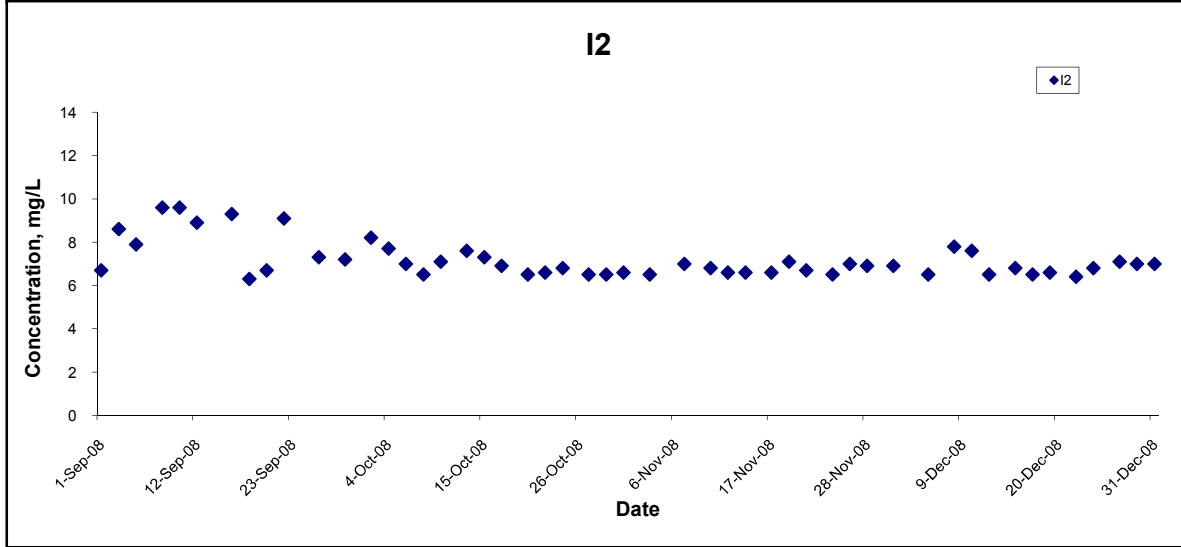
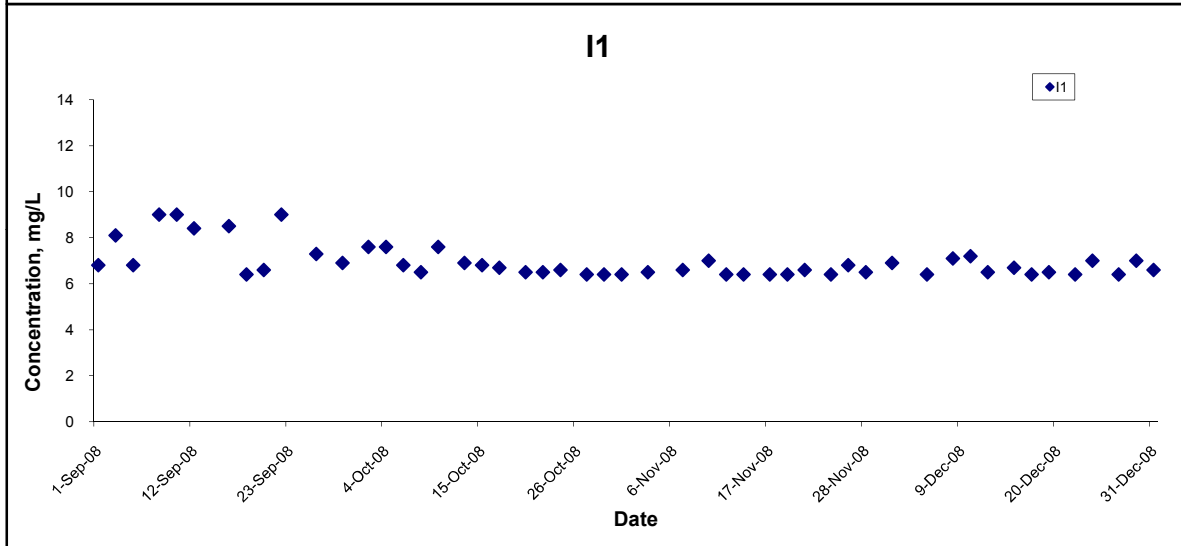
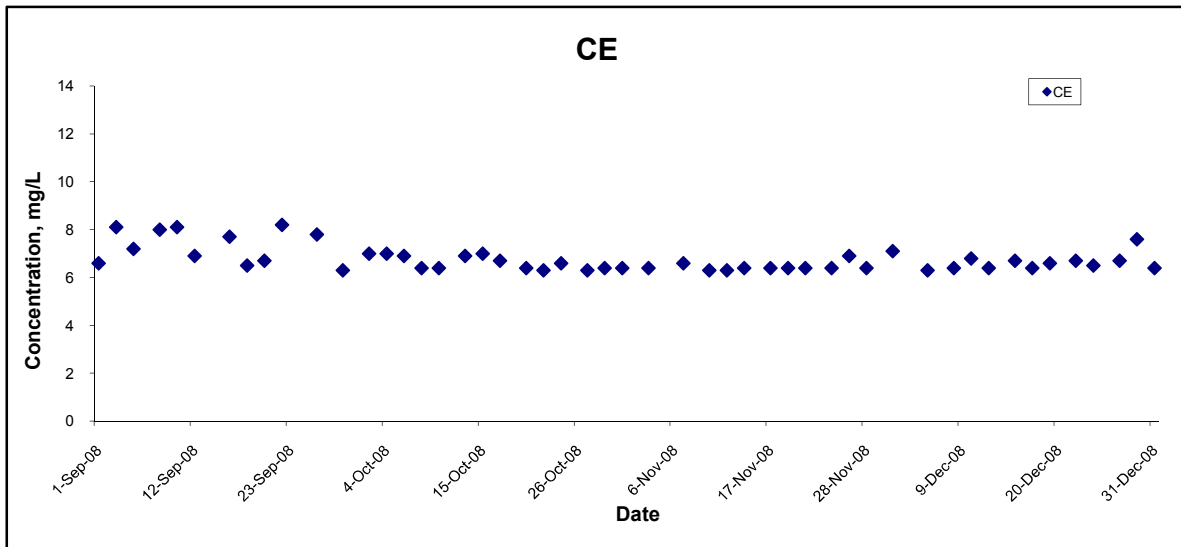
Water Quality Monitoring Results at Intake B - Mid-Flood Tide

Date	Weather Condition	Sea Condition**	Sampling Time	Depth (m)		Water Temperature (°C)		pH		Salinity ppt		DO Saturation (%)		Dissolved Oxygen (mg/L)			Turbidity(NTU)			Suspended Solids (mg/L)		
						Value	Average	Value	Average	Value	Average	Value	Average	Value	Average	DA*	Value	Average	DA*	Value	Average	DA*
27-Dec-08	Sunny	Calm	09:05	Surface	1	21.7 21.7	21.7	8.6 8.5	8.6	29.8 29.8	29.8	95.4 95.4	95.4	6.9 7.0	7.0	7.0	1.7 1.7	1.7	2.2	11.0 11.0	11.0	13.0
				Middle	6	21.5 21.5	21.5	8.1 7.6	7.9	29.9 29.9	29.9	94.3 94.5	94.4	6.9 6.9	6.9		2.2 2.3	2.3		15.0 15.0	15.0	
				Bottom	11	21.5 21.5	21.5	7.7 7.5	7.6	30.0 30.1	30.1	95.9 96.5	96.2	7.0 7.0	7.0		2.7 2.7	2.7		13.0 13.0	13.0	
29-Dec-08	Cloudy	Moderate	09:23	Surface	1	19.7 19.7	19.7	7.1 7.3	7.2	34.3 34.3	34.3	98.3 98.8	98.6	7.4 7.4	7.4	7.4	2.6 2.4	2.5	2.9	11.0 11.0	11.0	10.5
				Middle	6	19.6 19.6	19.6	7.7 7.2	7.5	34.3 34.3	34.3	97.5 99.3	98.4	7.3 7.4	7.4		2.6 2.8	2.7		8.0 9.0	8.5	
				Bottom	11	19.6 19.6	19.6	7.2 8.1	7.7	34.3 34.3	34.3	104.8 104.7	104.8	7.9 7.8	7.9		3.2 3.5	3.4		12.0 12.0	12.0	
31-Dec-08	Cloudy	Calm	09:23	Surface	1	22.3 22.4	22.4	8.5 8.3	8.4	32.0 32.0	32.0	88.2 89.5	88.9	6.6 6.7	6.7	6.7	2.7 2.8	2.8	3.2	12.0 12.0	12.0	15.3
				Middle	5	22.7 22.7	22.7	8.2 8.0	8.1	32.1 32.6	32.4	91.2 86.5	88.9	7.0 6.2	6.6		3.3 3.4	3.4		16.0 16.0	16.0	
				Bottom	9	22.7 22.7	22.7	8.0 7.9	8.0	33.1 32.6	32.9	88.0 88.2	88.1	6.3 6.4	6.4		3.3 3.3	3.3		18.0 18.0	18.0	

Remarks: The reporting limit for laboratory analysis of suspended solids is 2.5 mg/L. For the results below the reporting limit, the SS level will be taken as 2.5 mg/L.

Remarks: * DA: Depth-Averaged
 ** Calm: Small or no wave; Moderate: Between calm and rough; Rough : White capped or rougher

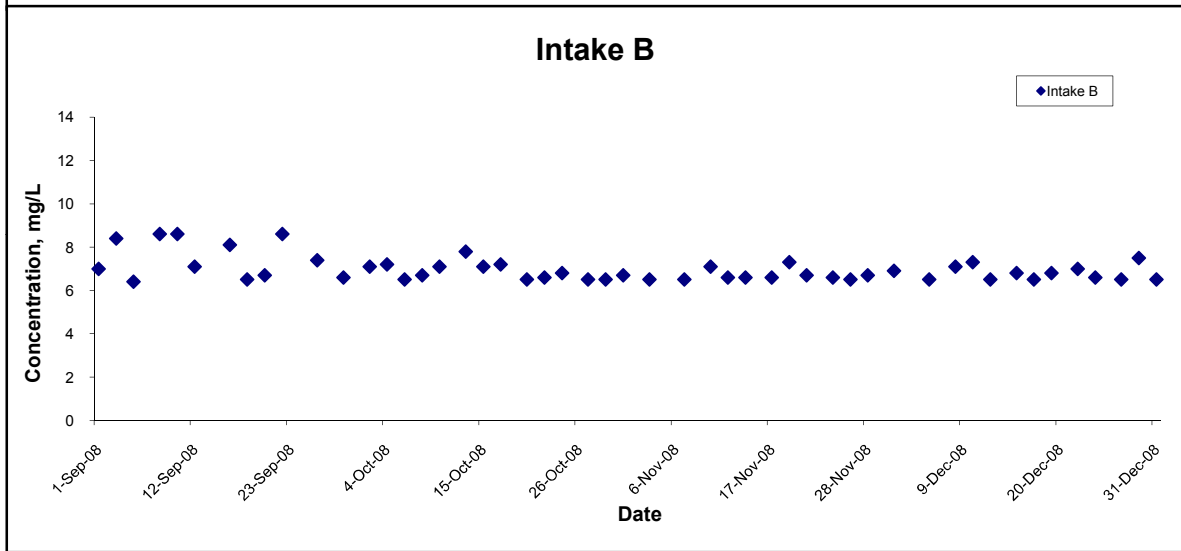
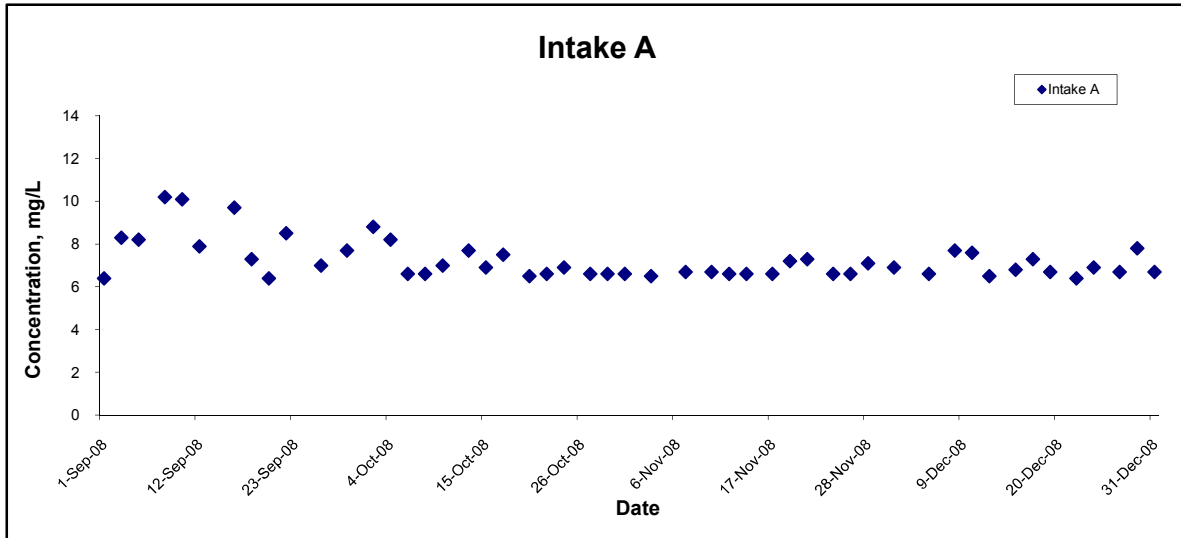
Dissolved Oxygen (Surface & Middle) at Mid-Ebb Tide



Title Contract No. DC/2007/10 Design and Construction of Hong Kong West Drainage Tunnel Graphical Presentation of Water Quality Monitoring Results	Scale	N.T.S	Project No.	MA8001
	Date	Dec 08	Appendix	H

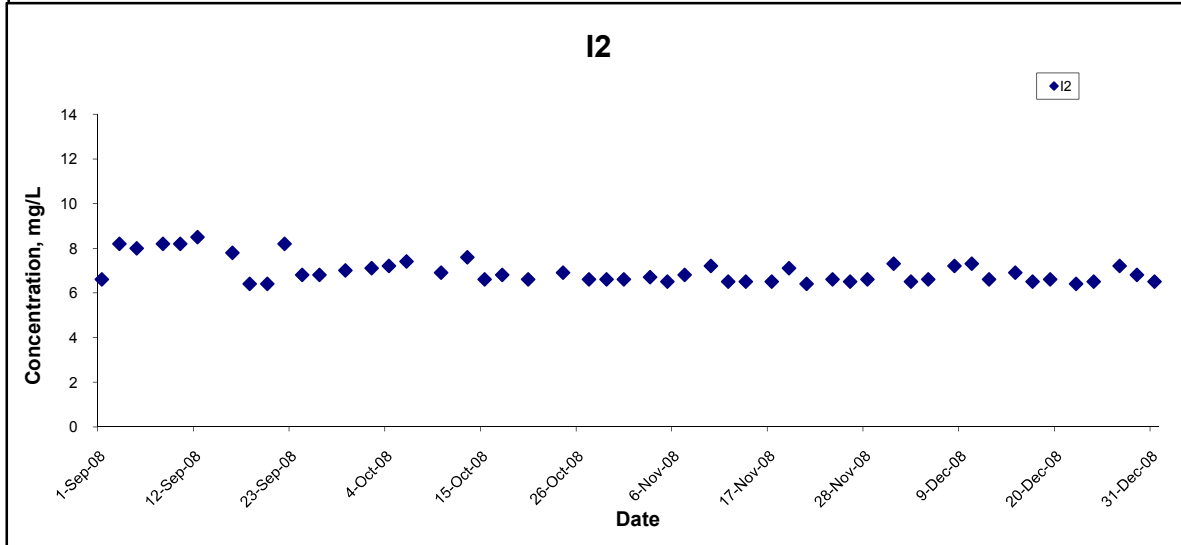
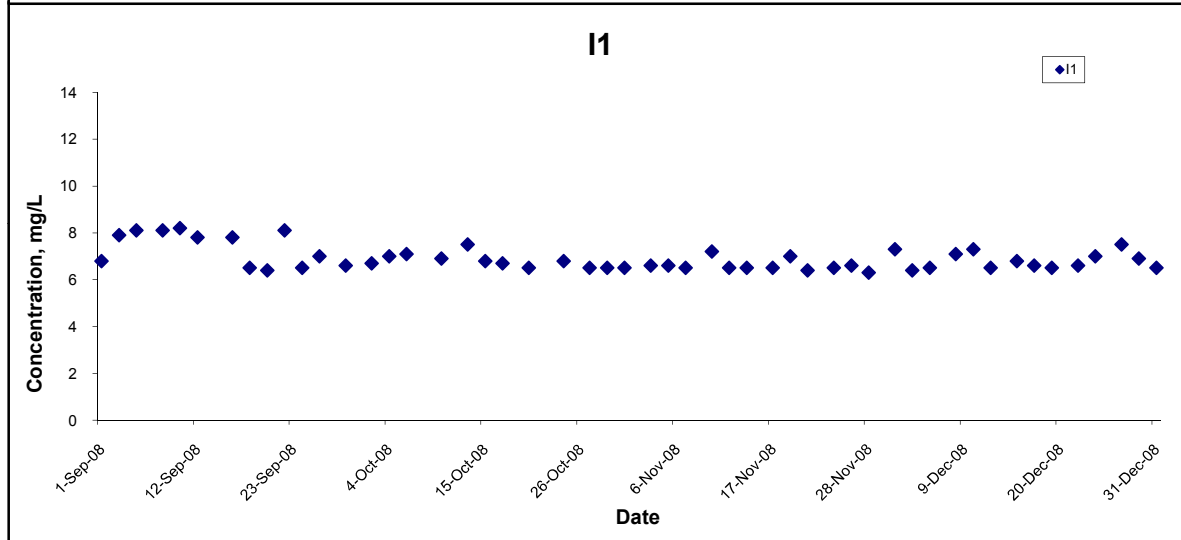
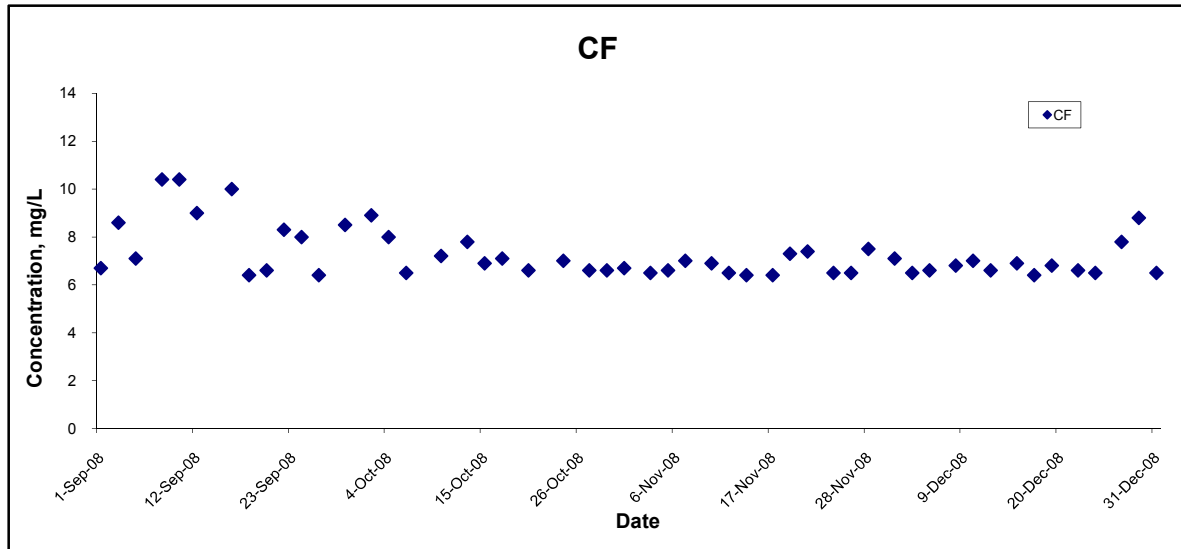
CINOTECH

Dissolved Oxygen (Surface & Middle) at Mid-Ebb Tide



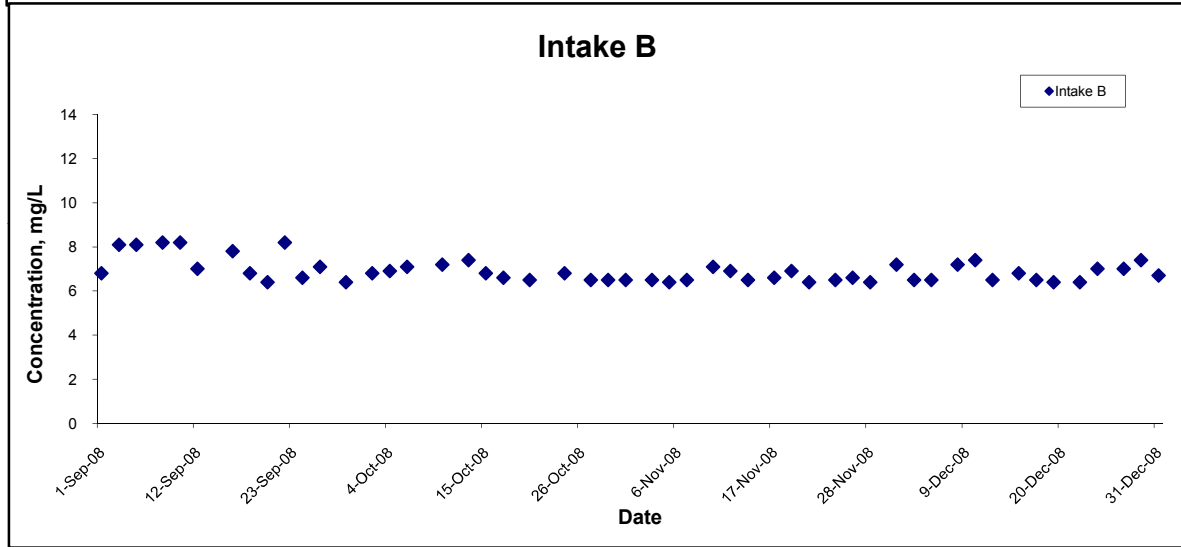
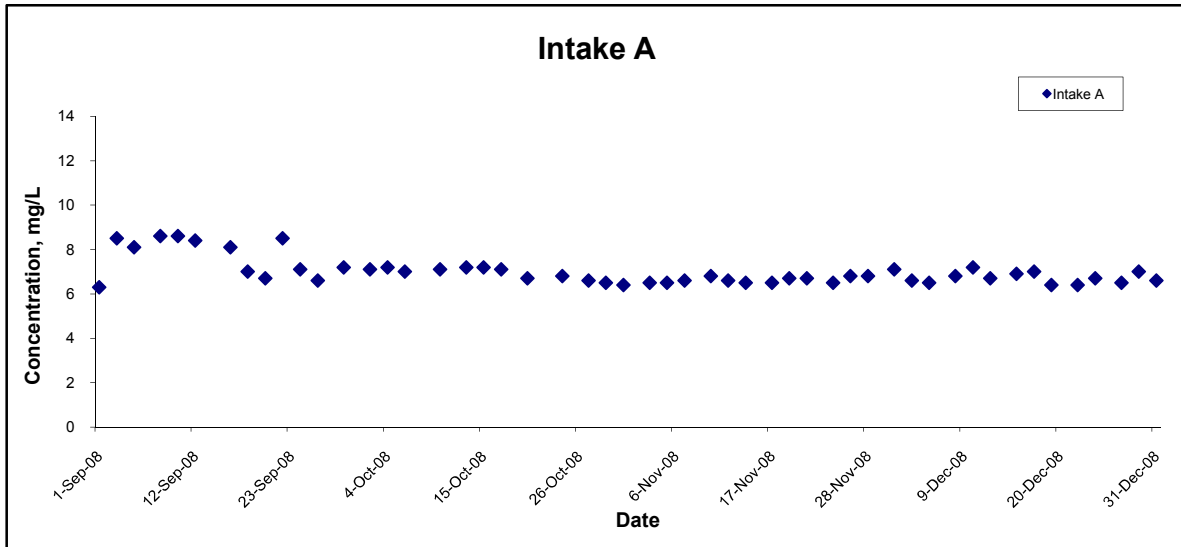
Title Contract No. DC/2007/10 Design and Construction of Hong Kong West Drainage Tunnel Graphical Presentation of Water Quality Monitoring Results	Scale N.T.S	Project No. MA8001	CINOTECH
	Date Dec 08	Appendix H	

Dissolved Oxygen (Surface & Middle) at Mid-Flood Tide



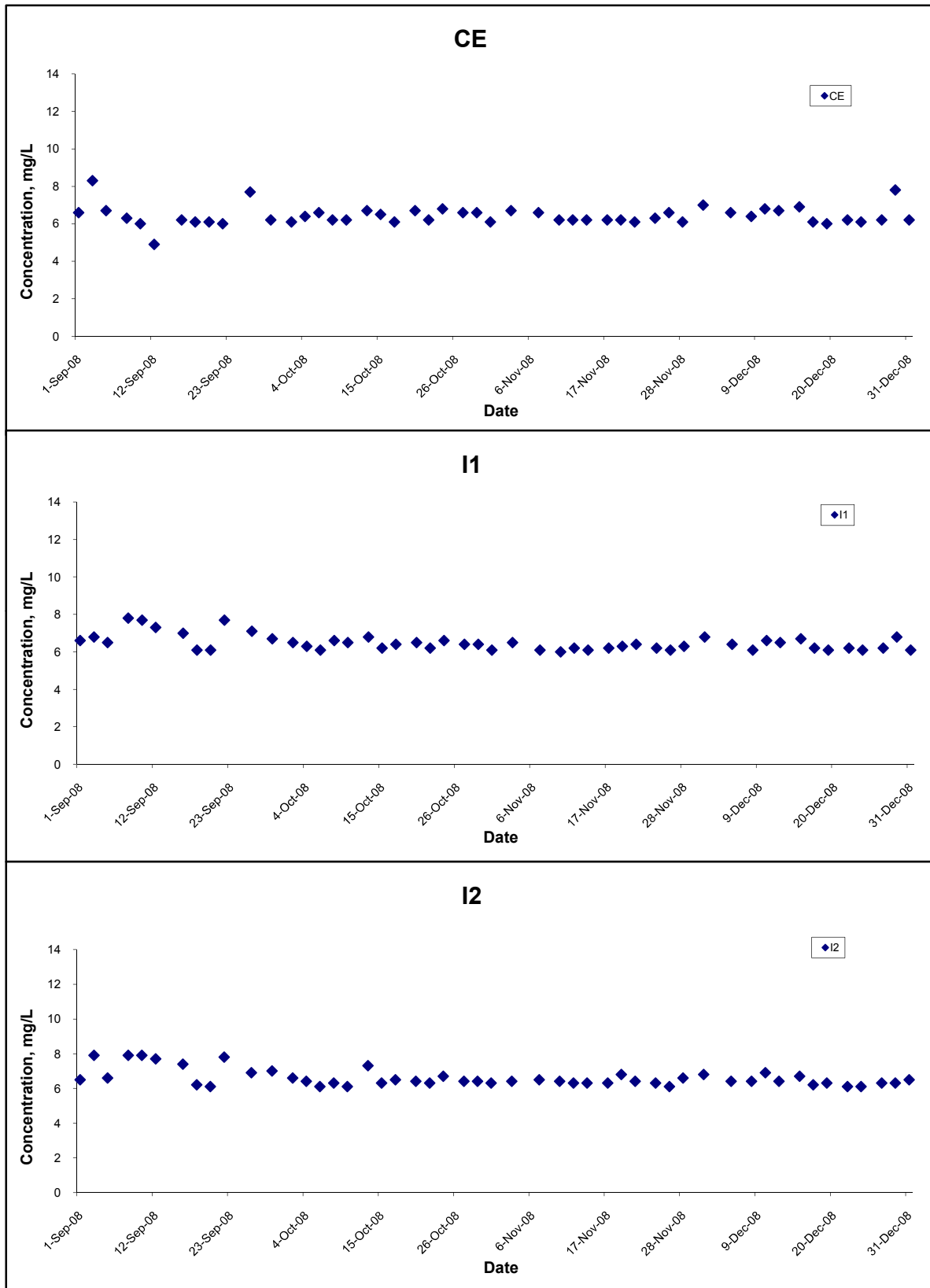
Title Contract No. DC/2007/10 Design and Construction of Hong Kong West Drainage Tunnel Graphical Presentation of Water Quality Monitoring Results	Scale N.T.S	Project No. MA8001	
	Date Dec 08	Appendix H	

Dissolved Oxygen (Surface & Middle) at Mid-Flood Tide



Title Contract No. DC/2007/10 Design and Construction of Hong Kong West Drainage Tunnel Graphical Presentation of Water Quality Monitoring Results	Scale N.T.S	Project No. MA8001	CINOTECH
	Date Dec 08	Appendix H	

Dissolved Oxygen (Bottom) at Mid-Ebb Tide



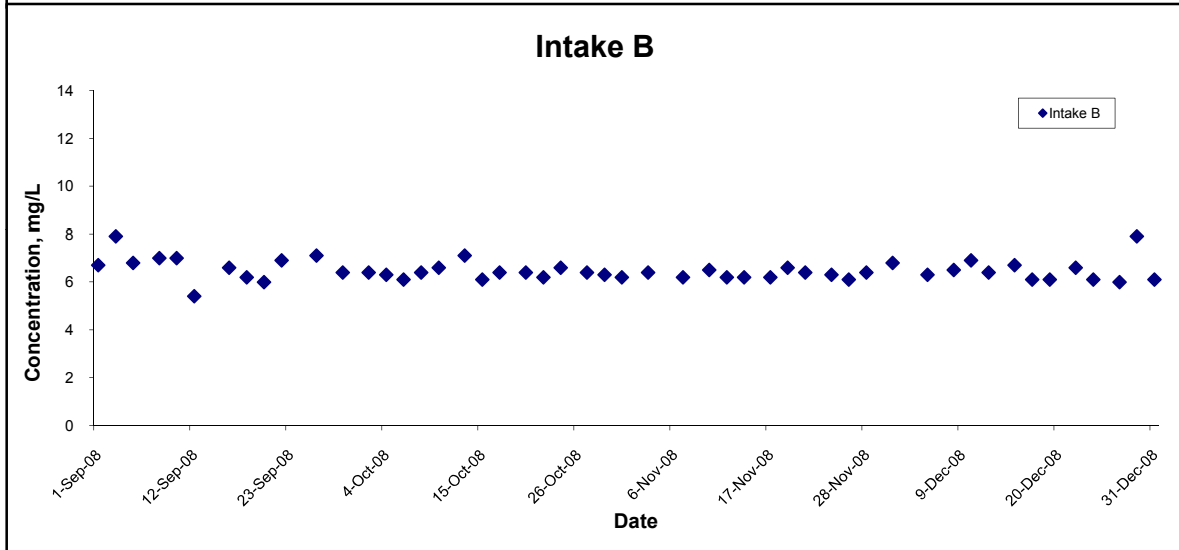
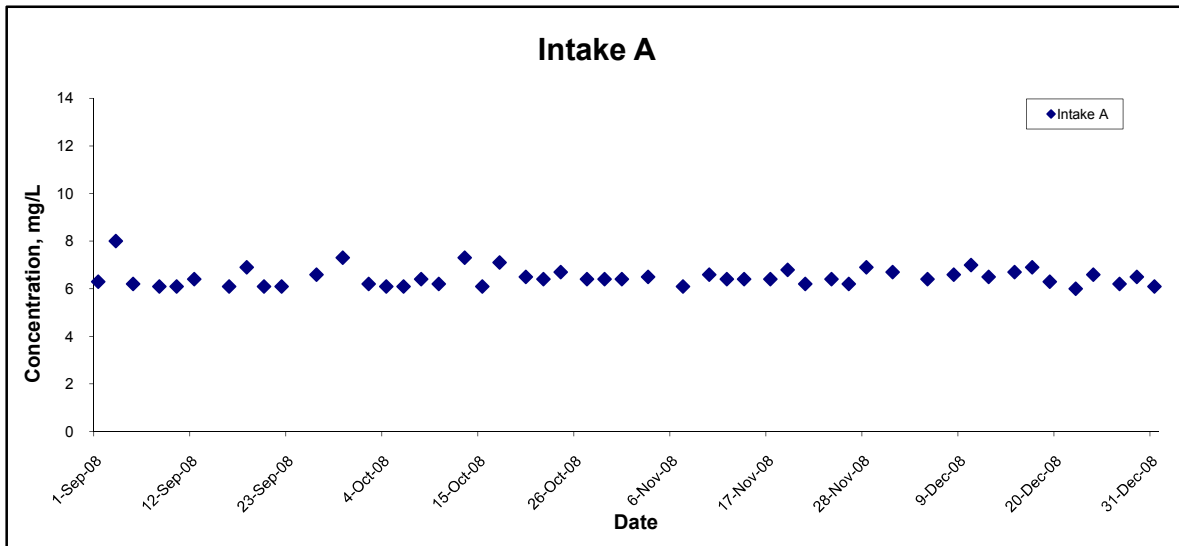
Title
 Contract No. DC/2007/10
 Design and Construction of Hong Kong West Drainage Tunnel
 Graphical Presentation of Water Quality
 Monitoring Results

Scale
 N.T.S
 Date
 Dec 08

Project
 No. MA8001
 Appendix
 H

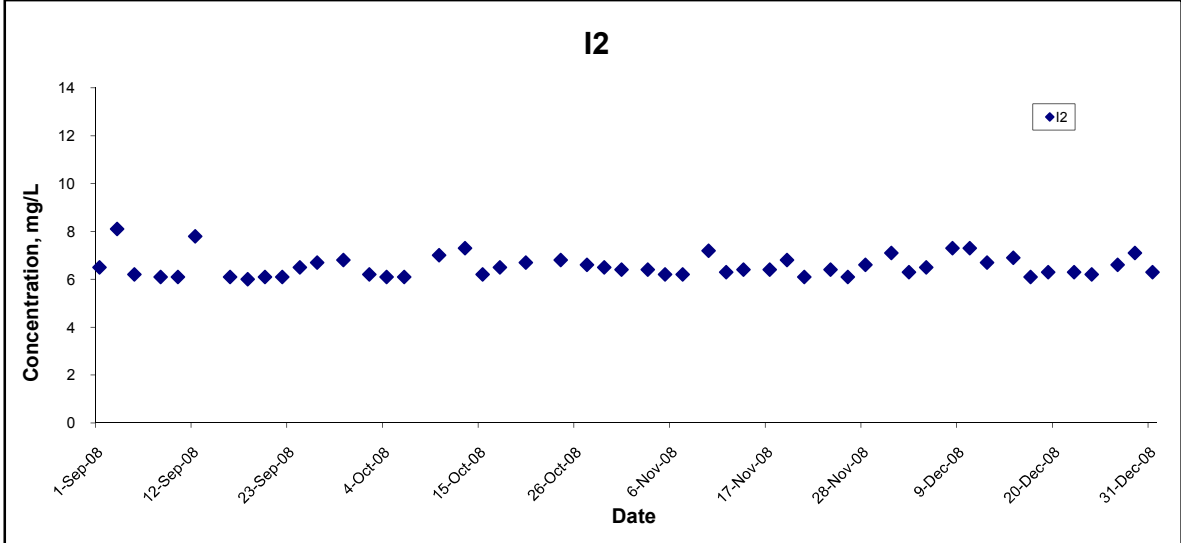
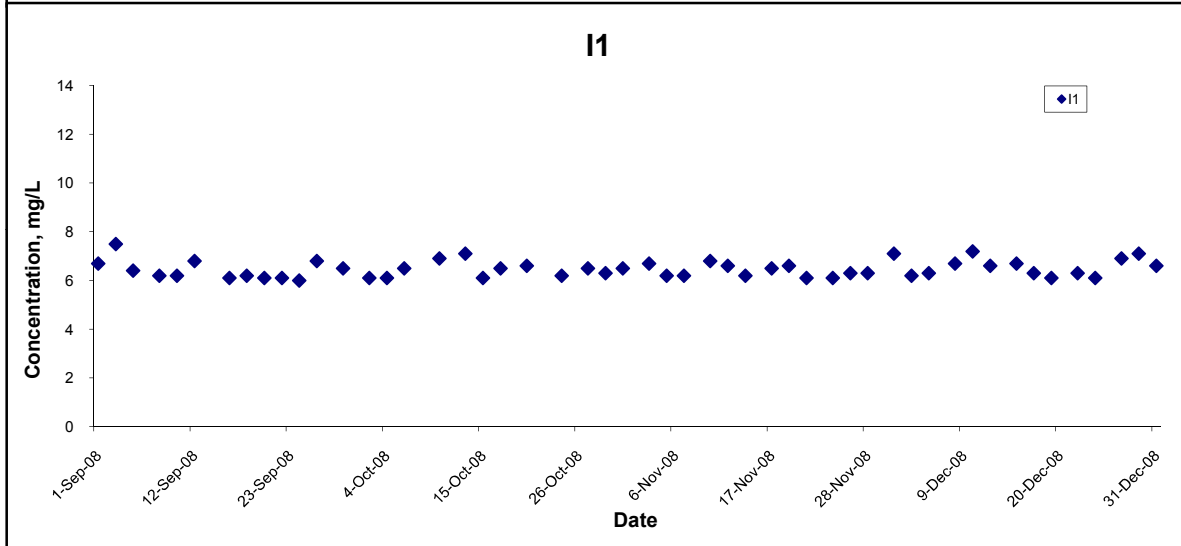
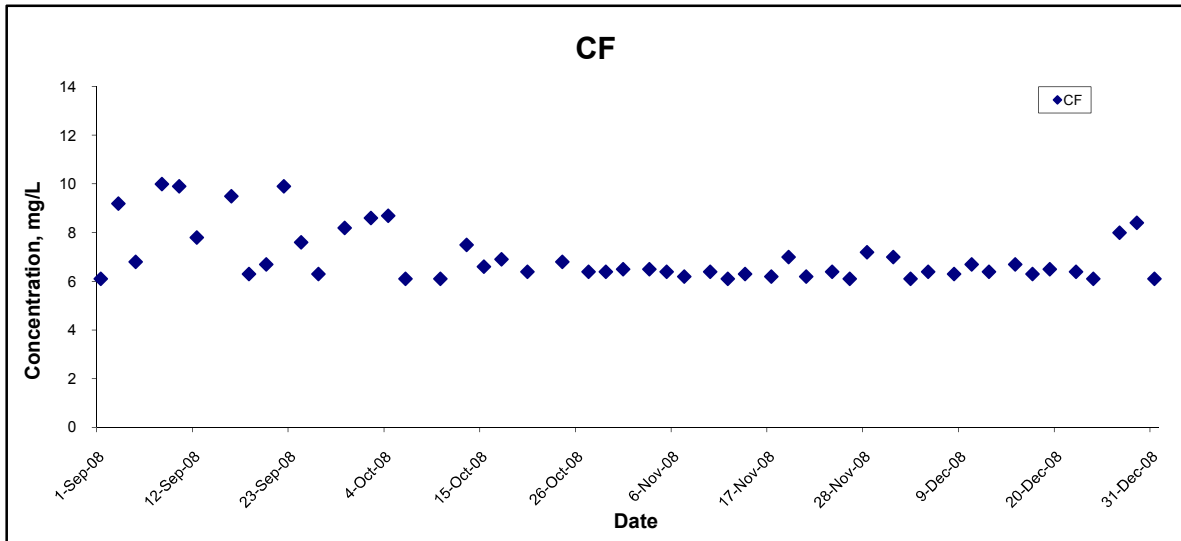


Dissolved Oxygen (Bottom) at Mid-Ebb Tide



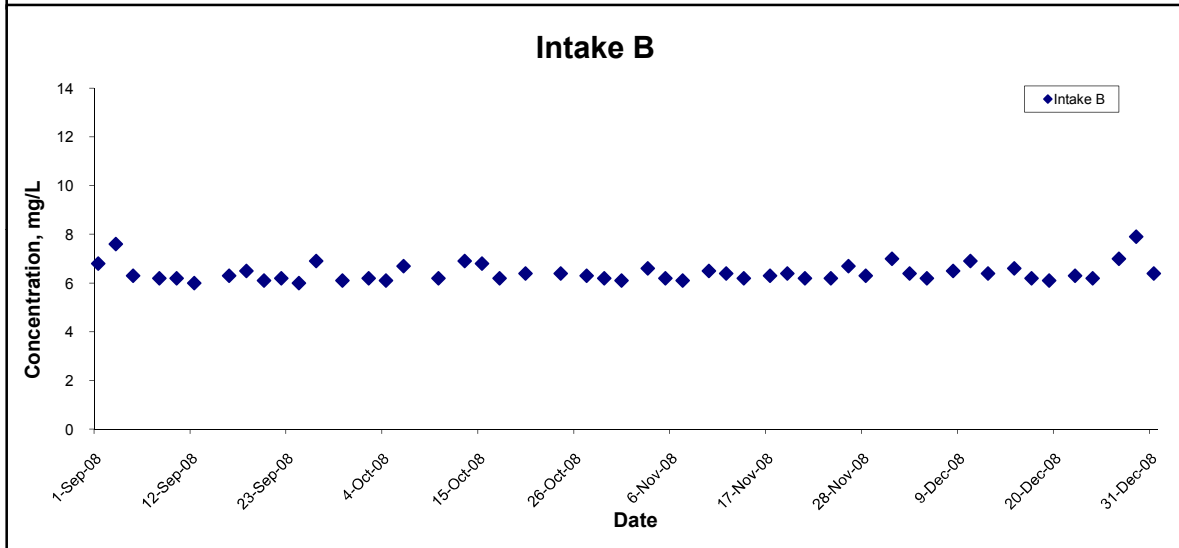
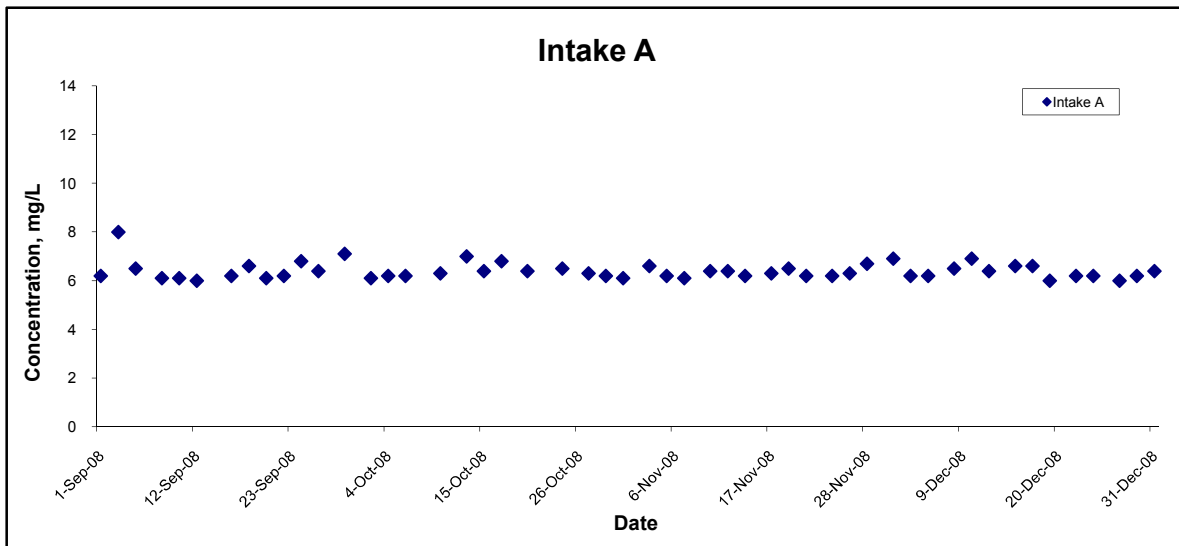
Title Contract No. DC/2007/10 Design and Construction of Hong Kong West Drainage Tunnel Graphical Presentation of Water Quality Monitoring Results	Scale N.T.S	Project No. MA8001	CINOTECH
	Date Dec 08	Appendix H	

Dissolved Oxygen (Bottom) at Mid-Flood Tide



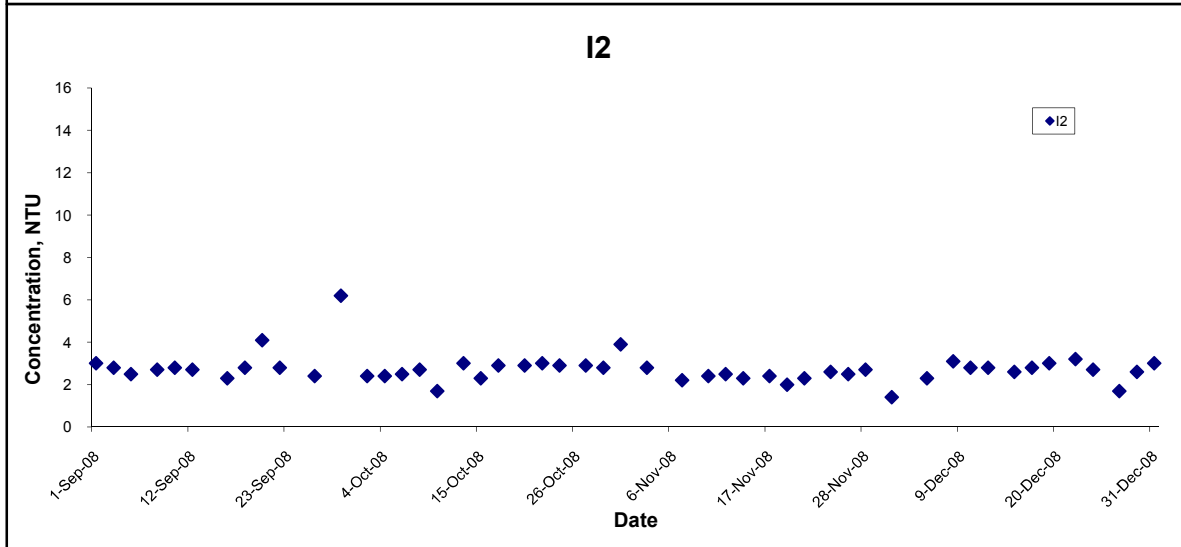
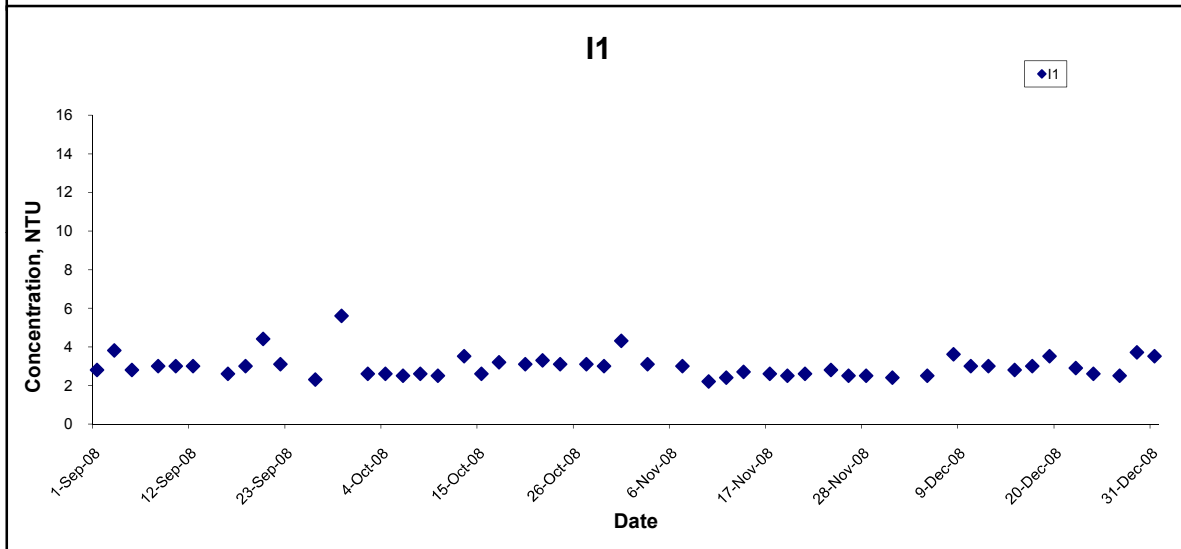
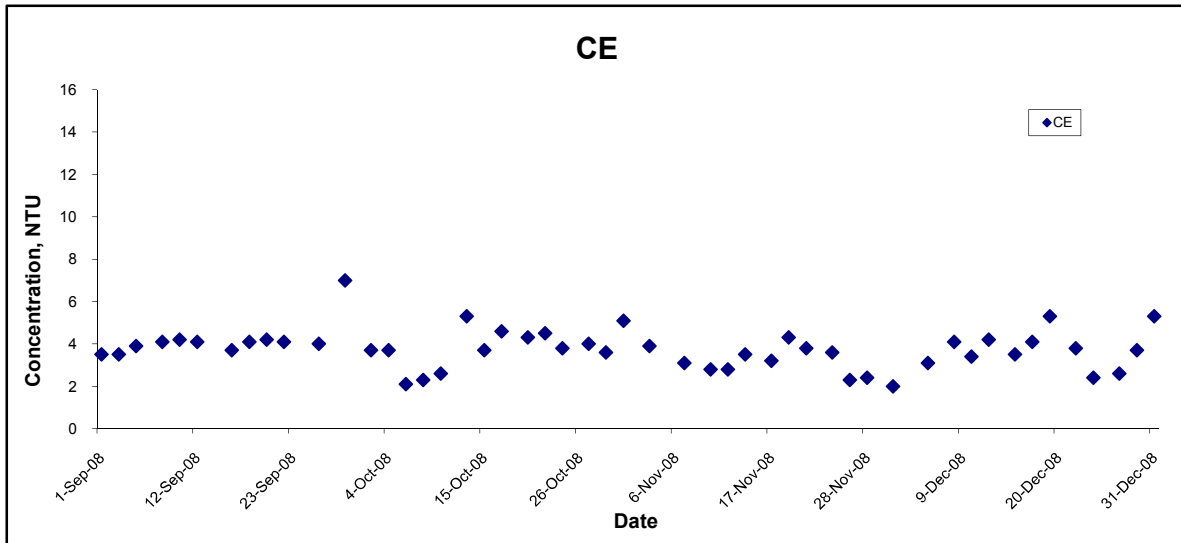
Title Contract No. DC/2007/10 Design and Construction of Hong Kong West Drainage Tunnel Graphical Presentation of Water Quality Monitoring Results	Scale N.T.S	Project No. MA8001	CINOTECH
	Date Dec 08	Appendix H	

Dissolved Oxygen (Bottom) at Mid-Flood Tide



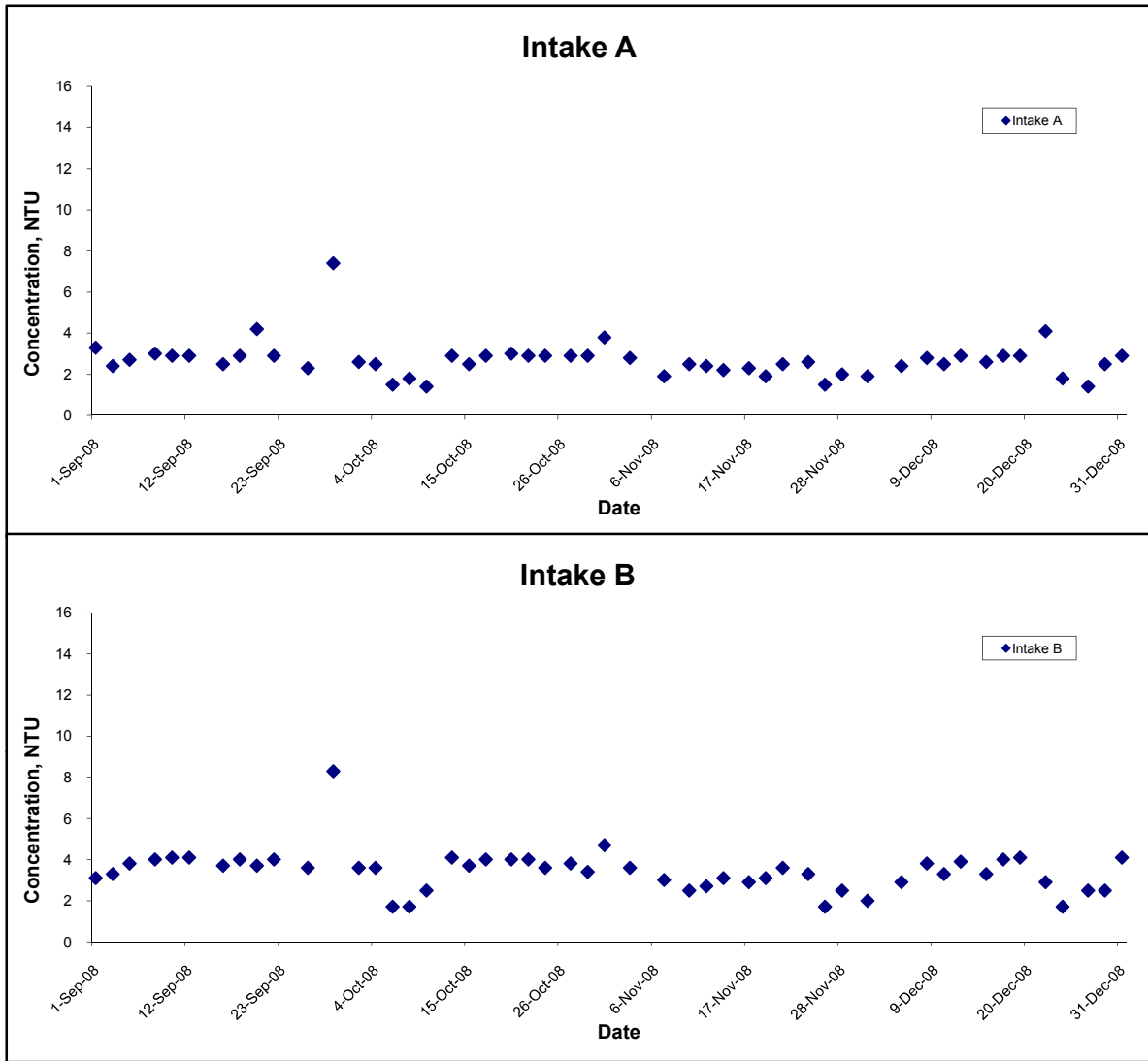
Title Contract No. DC/2007/10 Design and Construction of Hong Kong West Drainage Tunnel Graphical Presentation of Water Quality Monitoring Results	Scale	N.T.S	Project No. MA8001	CINOTECH
	Date	Dec 08	Appendix H	

Turbidity (Depth-averaged) at Mid-Ebb Tide



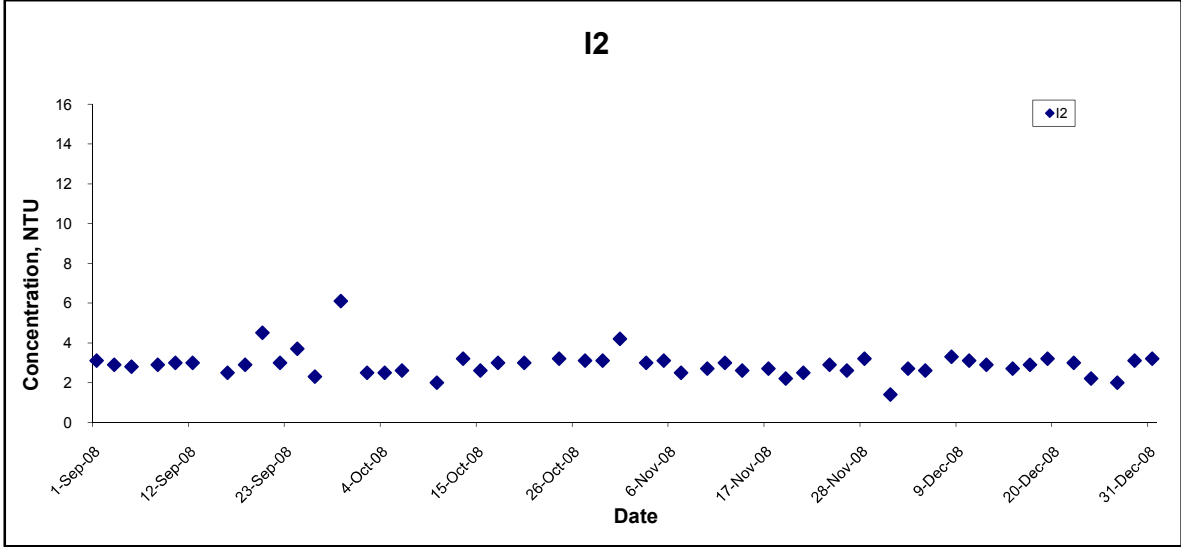
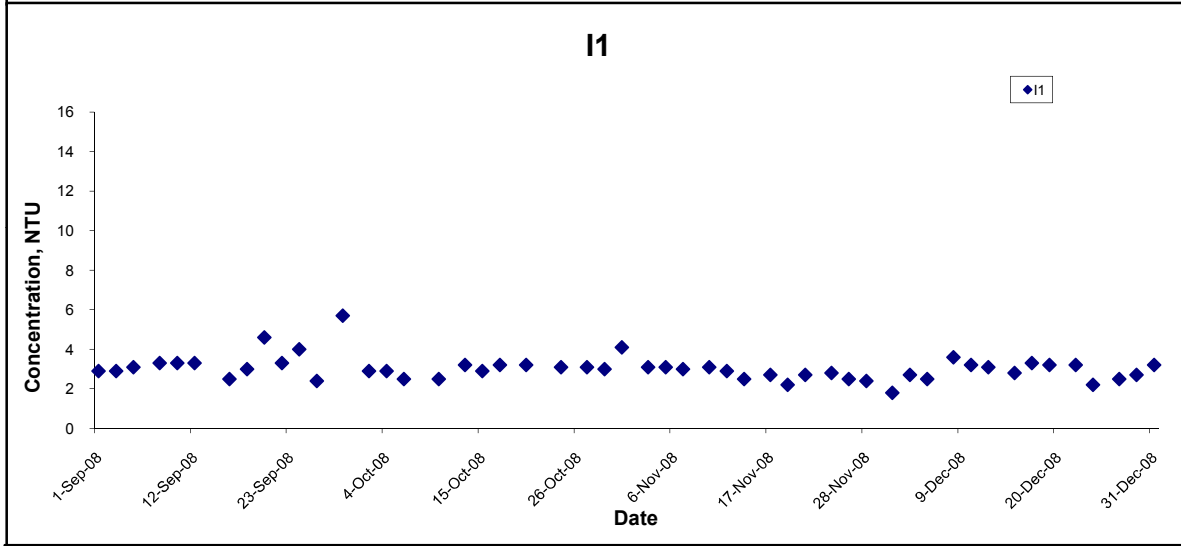
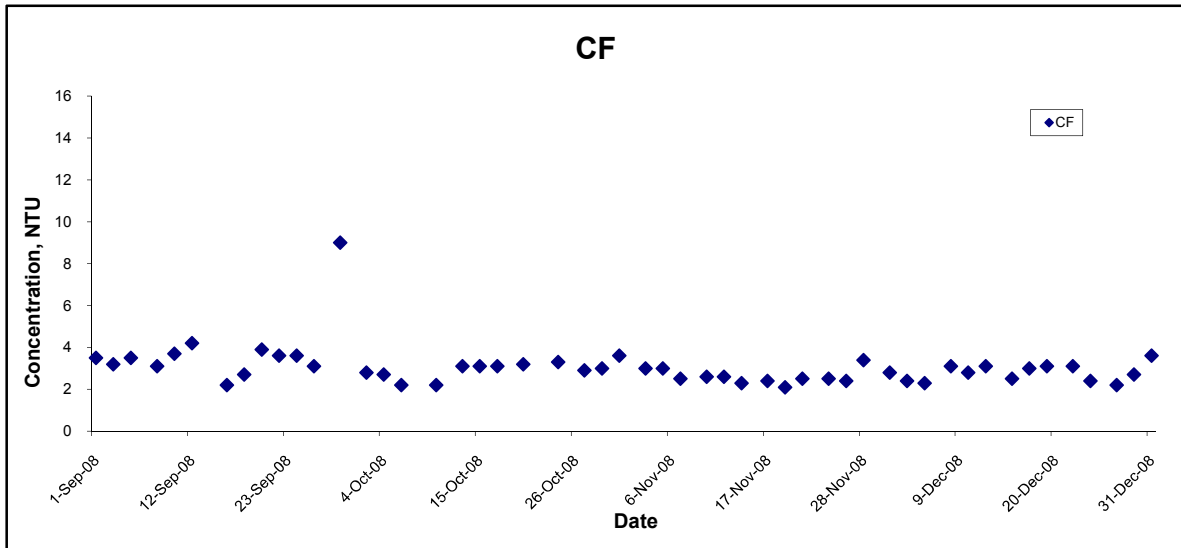
Title Contract No. DC/2007/10 Design and Construction of Hong Kong West Drainage Tunnel Graphical Presentation of Water Quality Monitoring Results	Scale N.T.S	Project No. MA8001	
	Date Dec 08	Appendix H	

Turbidity (Depth-averaged) at Mid-Ebb Tide



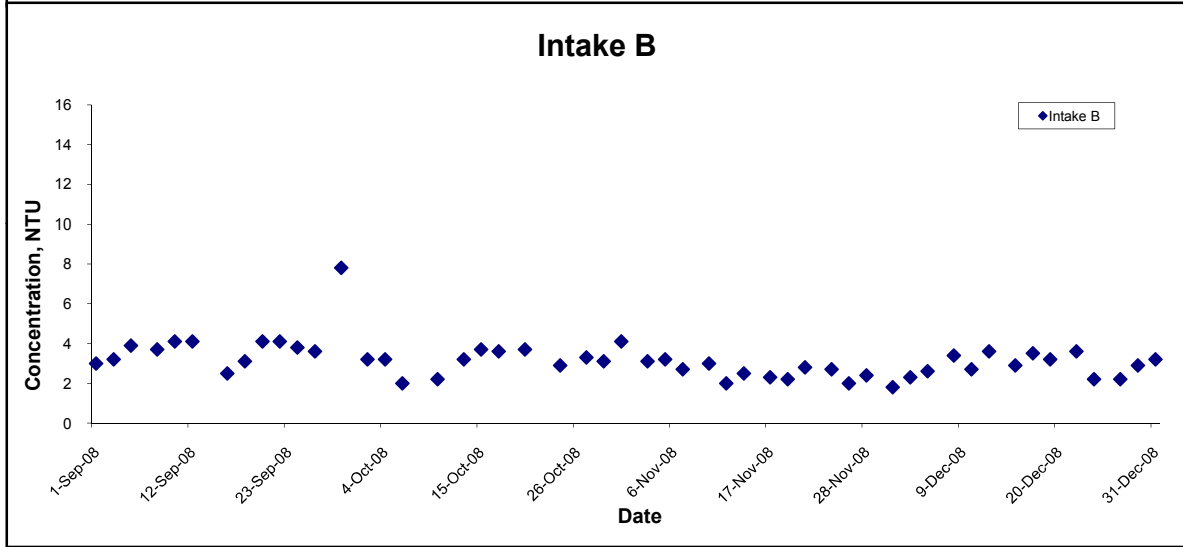
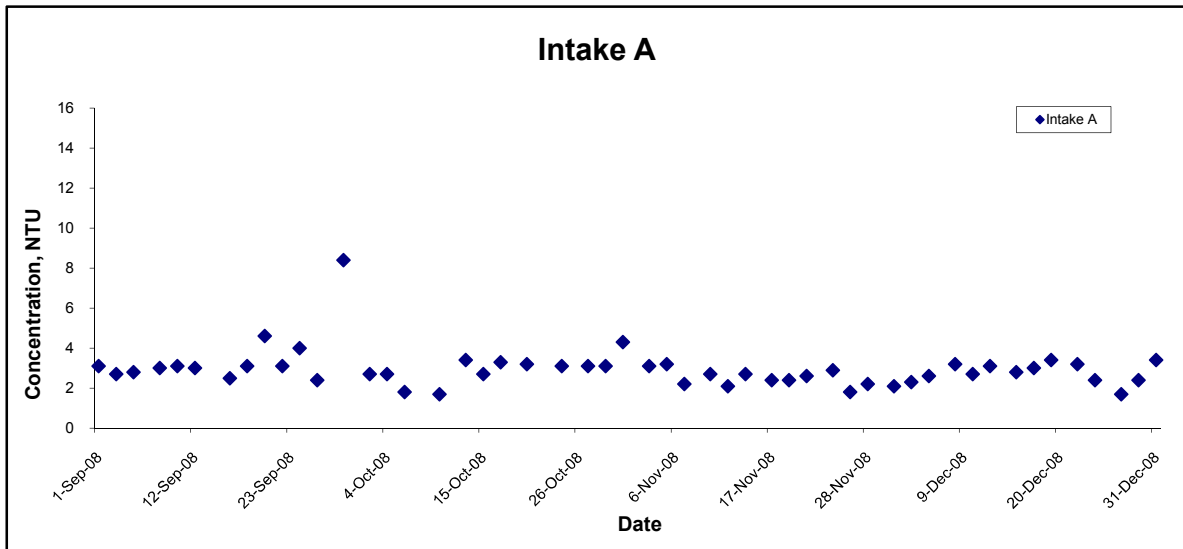
Title Contract No. DC/2007/10 Design and Construction of Hong Kong West Drainage Tunnel Graphical Presentation of Water Quality Monitoring Results	Scale	N.T.S	Project No. MA8001	CINOTECH
	Date	Dec 08	Appendix H	

Turbidity (Depth-averaged) at Mid-Flood Tide



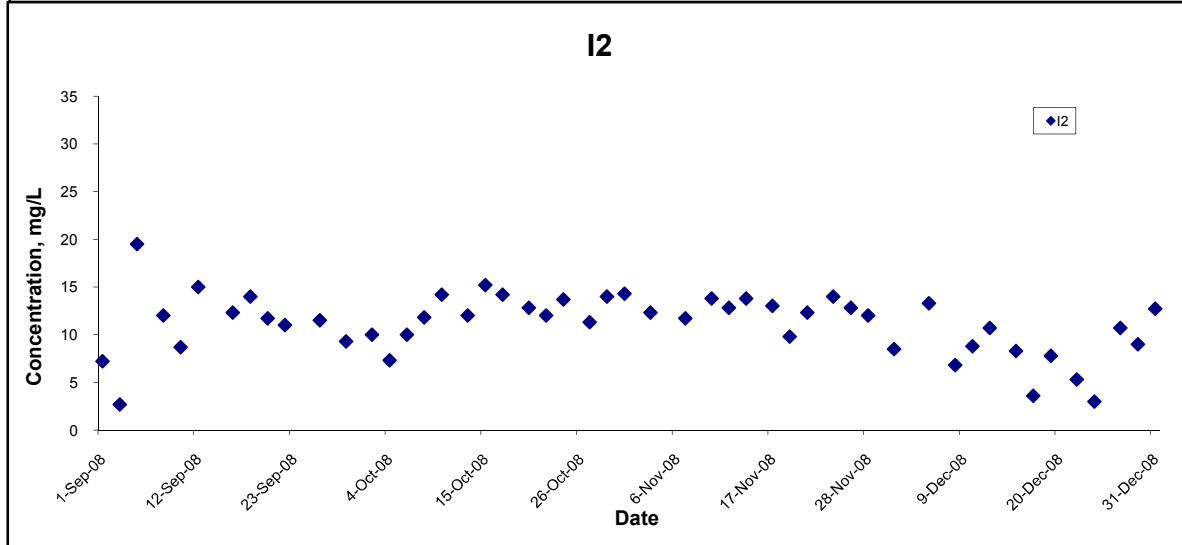
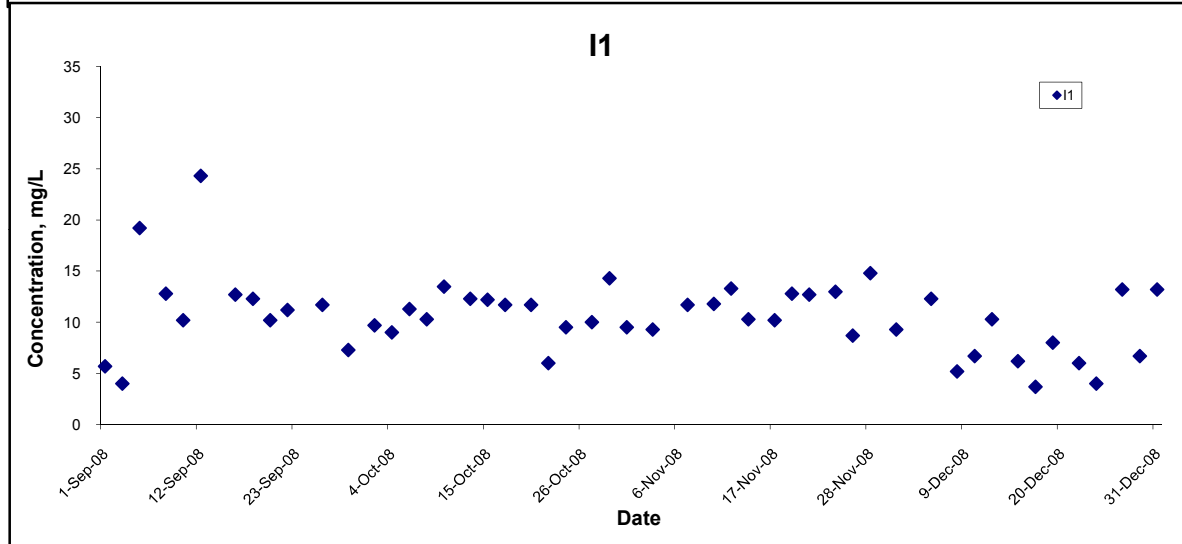
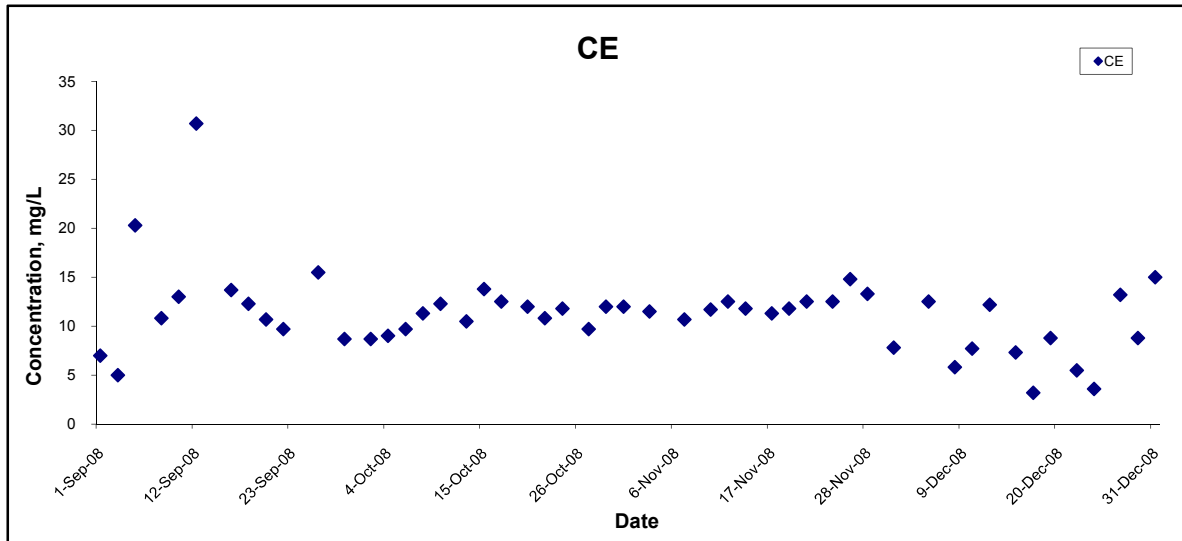
Title Contract No. DC/2007/10 Design and Construction of Hong Kong West Drainage Tunnel Graphical Presentation of Water Quality Monitoring Results	Scale N.T.S	Project No. MA8001	
	Date Dec 08	Appendix H	

Turbidity (Depth-averaged) at Mid-Flood Tide



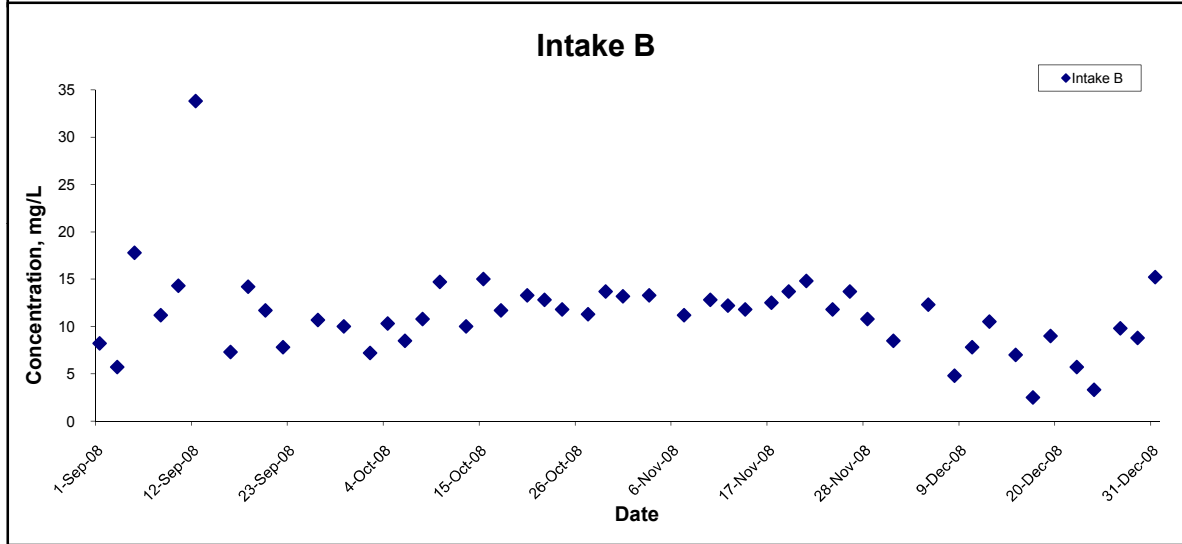
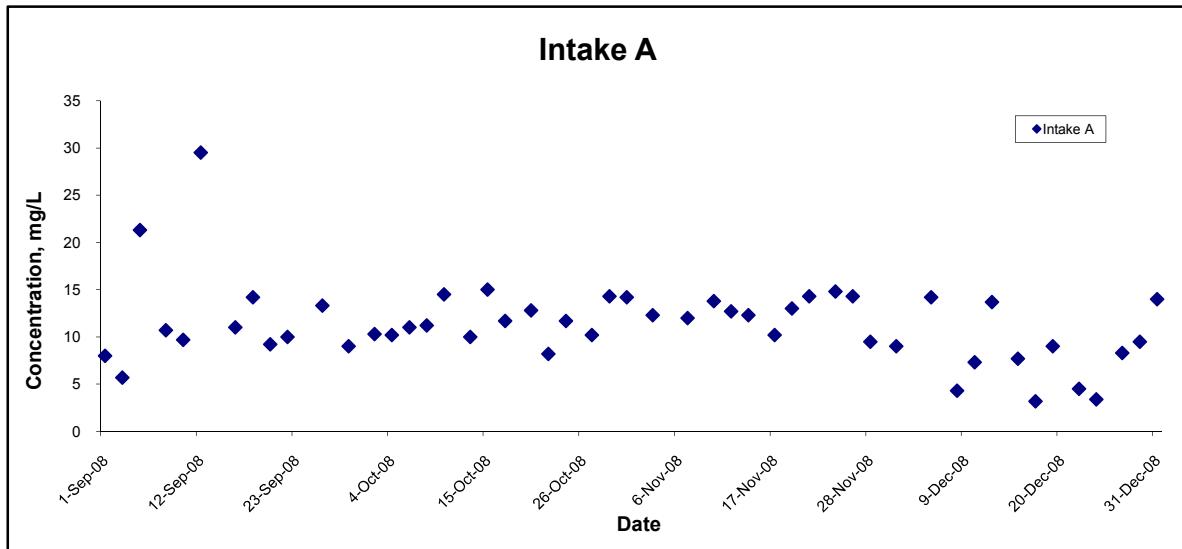
Title Contract No. DC/2007/10 Design and Construction of Hong Kong West Drainage Tunnel Graphical Presentation of Water Quality Monitoring Results	Scale N.T.S	Project No. MA8001	
	Date Dec 08	Appendix H	

Suspended Solids (Depth-averaged) at Mid-Ebb Tide



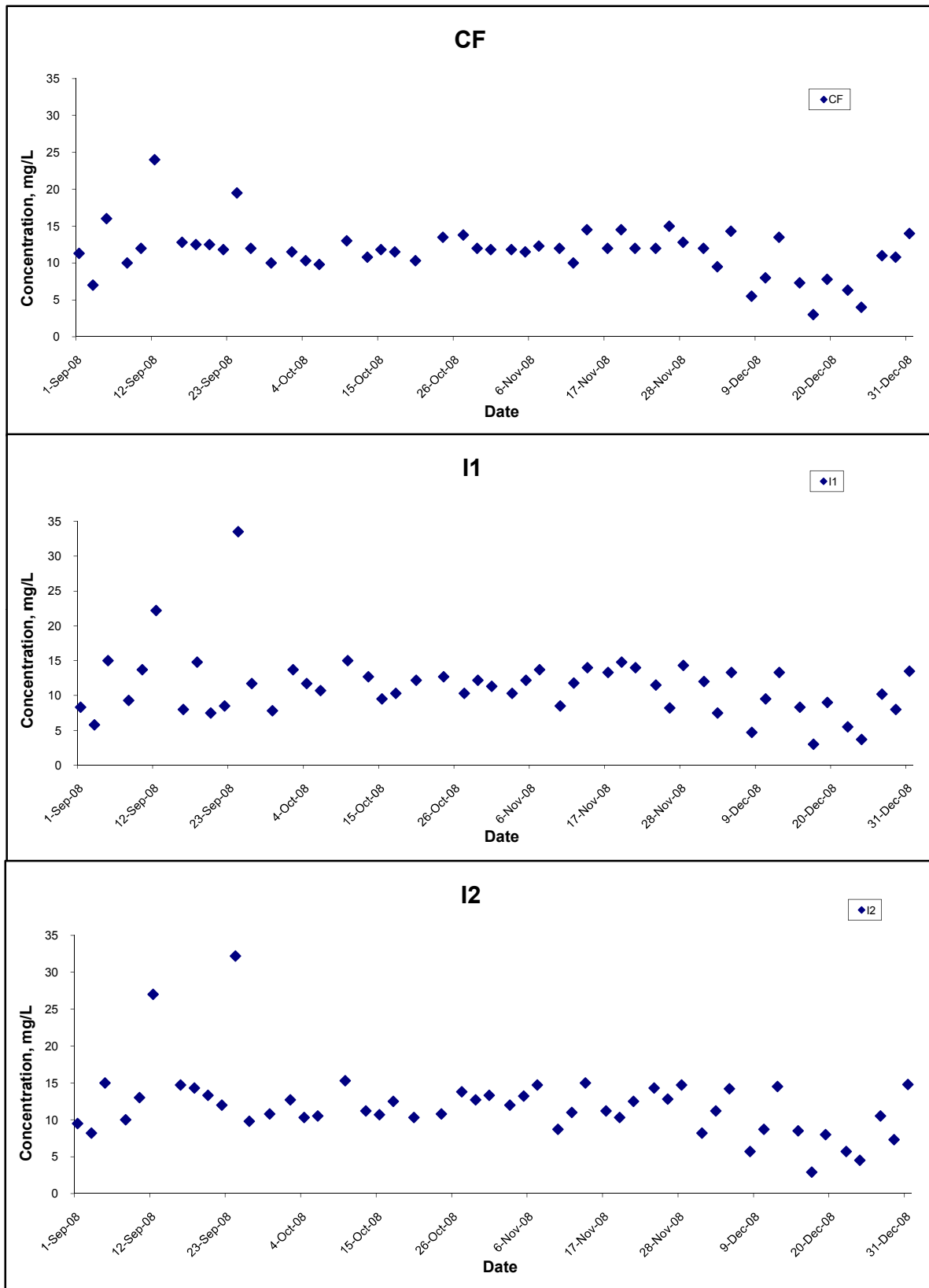
Title Contract No. DC/2007/10 Design and Construction of Hong Kong West Drainage Tunnel Graphical Presentation of Water Quality Monitoring Results	Scale N.T.S	Project No. MA8001	
	Date Dec 08	Appendix H	

Suspended Solids (Depth-averaged) at Mid-Ebb Tide



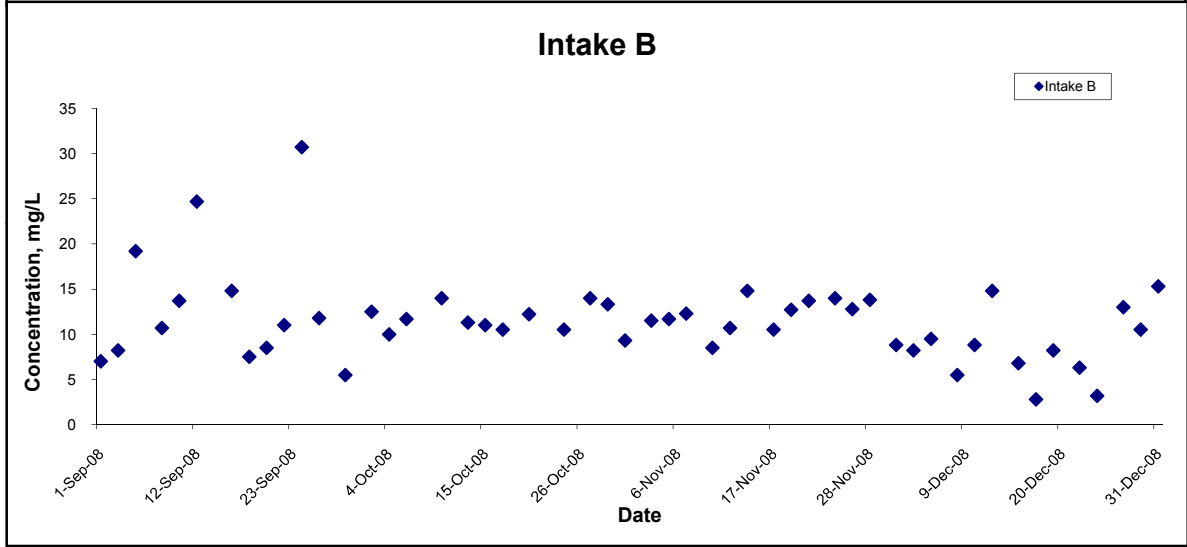
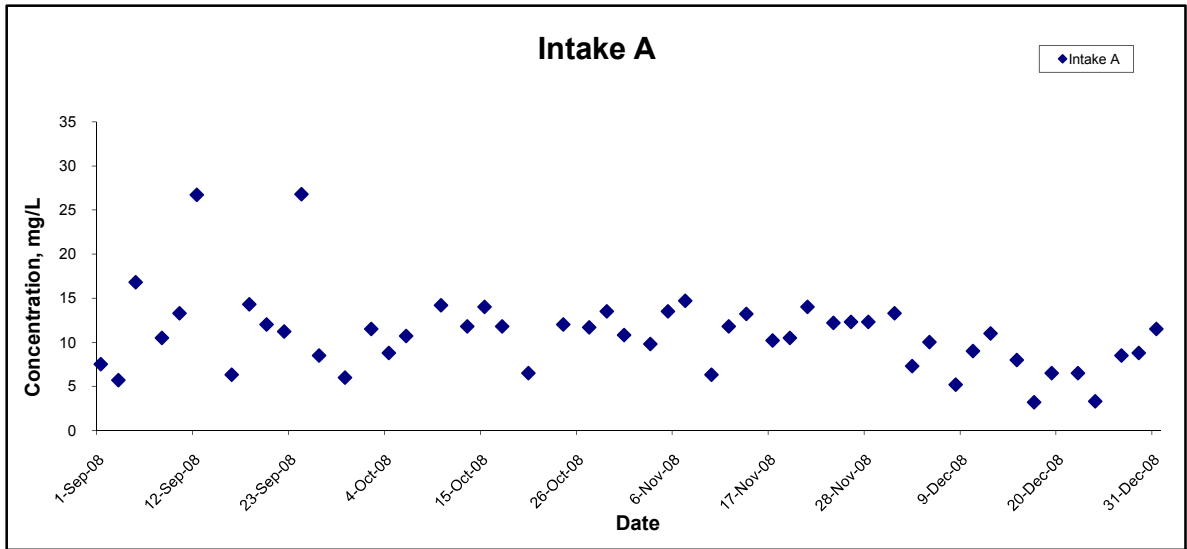
Title Contract No. DC/2007/10 Design and Construction of Hong Kong West Drainage Tunnel Graphical Presentation of Water Quality Monitoring Results	Scale N.T.S	Project No. MA8001	CINOTECH
	Date Dec 08	Appendix H	

Suspended Solids (Depth-averaged) at Mid-Flood Tide



Title Contract No. DC/2007/10 Design and Construction of Hong Kong West Drainage Tunnel Graphical Presentation of Water Quality Monitoring Results	Scale N.T.S	Project No. MA8001	
	Date Dec 08	Appendix H	

Suspended Solids (Depth-averaged) at Mid-Flood Tide



Title Contract No. DC/2007/10 Design and Construction of Hong Kong West Drainage Tunnel Graphical Presentation of Water Quality Monitoring Results	Scale	N.T.S	Project No. MA8001	CINOTECH
	Date	Dec 08	Appendix H	