

Water Quality Monitoring Results at CE - Mid-Ebb Tide

Date	Weather Condition	Sea Condition**	Sampling Time	Depth (m)		Water Temperature (°C)		pH		Salinity ppt		DO Saturation (%)		Dissolved Oxygen (mg/L)		Turbidity (NTU)			Suspended Solids (mg/L)			
						Value	Average	Value	Average	Value	Average	Value	Average	Value	Average	DA*	Value	Average	DA*	Value	Average	DA*
3-Aug-09	Rainy	Calm	11:57	Surface	1	27.8 27.9	27.9	9.0 8.7	8.9	33.9 34.0	34.0	95.5 94.4	95.0	6.8 6.7	6.8	7.1	2.8 2.8	2.8	3.2	7.0 7.0	7.0	8.8
				Middle	5.5	27.7 27.9	27.8	8.5 7.8	8.2	34.1 34.0	34.1	99.1 102.7	100.9	7.2 7.3	7.3		2.7 2.7	2.7		10.0 10.0	10.0	
				Bottom	10	27.8 27.8	27.8	8.1 7.8	8.0	34.1 34.2	34.2	102.3 99.3	100.8	7.4 7.2	7.3		3.8 4.1	4.0		9.0 10.0	9.5	
5-Aug-09	Rainy	Calm	12:57	Surface	1	27.7 27.7	27.7	8.9 8.7	8.8	34.0 34.2	34.1	98.6 97.3	98.0	7.1 6.9	7.0	7.3	2.4 2.4	2.4	2.8	12.0 12.0	12.0	8.8
				Middle	5.5	27.8 27.9	27.9	8.7 7.9	8.3	34.2 34.1	34.2	102.1 105.5	103.8	7.5 7.7	7.6		2.7 2.6	2.7		4.0 5.0	4.5	
				Bottom	10	27.7 27.9	27.8	8.1 7.7	7.9	34.1 34.1	34.1	105.5 102.3	103.9	7.8 7.4	7.6		3.3 3.3	3.3		10.0 10.0	10.0	
7-Aug-09	Sunny	Calm	13:56	Surface	1	27.9 27.7	27.8	7.6 7.3	7.5	34.0 34.0	34.0	91.6 90.3	91.0	6.5 6.4	6.5	6.7	5.9 6.4	6.2	6.9	8.0 8.0	8.0	7.8
				Middle	5.5	27.9 27.7	27.8	8.0 7.3	7.7	34.1 34.0	34.1	95.0 98.6	96.8	6.7 6.9	6.8		6.7 6.8	6.8		8.0 8.0	8.0	
				Bottom	10	27.9 27.9	27.9	7.8 7.1	7.5	34.1 34.0	34.1	98.5 95.4	97.0	6.9 6.8	6.9		7.5 7.7	7.6		7.0 8.0	7.5	
10-Aug-09	Cloudy	Calm	15:36	Surface	1	27.9 27.9	27.9	8.5 8.3	8.4	34.0 34.0	34.0	98.5 97.2	97.9	7.3 7.1	7.2	7.4	6.2 6.2	6.2	6.7	10.0 10.0	10.0	8.8
				Middle	5.5	27.7 27.8	27.8	8.0 7.6	7.8	34.1 33.9	34.0	102.1 105.6	103.9	7.4 7.6	7.5		7.1 7.0	7.1		12.0 12.0	12.0	
				Bottom	10	27.9 27.9	27.9	7.8 7.3	7.6	33.9 34.2	34.1	105.4 102.5	104.0	7.7 7.4	7.6		6.8 6.8	6.8		4.0 5.0	4.5	
12-Aug-09	Fine	Calm	16:36	Surface	1	27.8 27.7	27.8	9.0 8.7	8.9	34.0 33.9	34.0	98.5 97.3	97.9	7.3 6.9	7.1	7.4	2.5 2.5	2.5	2.6	6.0 6.0	6.0	10.0
				Middle	5.5	27.9 27.8	27.9	8.7 7.9	8.3	34.1 34.1	34.1	102.2 105.6	103.9	7.4 7.8	7.6		2.4 2.4	2.4		12.0 12.0	12.0	
				Bottom	10	27.7 27.7	27.7	8.1 7.8	8.0	34.1 34.1	34.1	105.5 102.3	103.9	7.6 7.4	7.5		2.9 3.0	3.0		12.0 12.0	12.0	
14-Aug-09	Cloudy	Calm	17:37	Surface	1	28.4 28.3	28.4	8.0 8.2	8.1	34.4 34.4	34.4	100.8 100.8	100.8	7.4 7.4	7.4	7.4	2.2 2.1	2.2	2.6	11.0 11.0	11.0	8.5
				Middle	5.5	28.3 28.0	28.2	7.9 7.9	7.9	34.3 34.3	34.3	98.6 98.7	98.7	7.3 7.3	7.3		2.7 2.5	2.6		8.0 8.0	8.0	
				Bottom	10	27.8 27.8	27.8	7.8 8.0	7.9	34.3 34.3	34.3	96.2 96.2	96.2	7.1 7.1	7.1		3.0 3.0	3.0		6.0 7.0	6.5	
17-Aug-09	Sunny	Calm	10:35	Surface	1	27.7 27.7	27.7	8.9 8.8	8.9	33.9 33.9	33.9	98.6 97.2	97.9	7.1 7.1	7.1	7.4	2.9 2.8	2.9	3.0	13.0 13.0	13.0	9.5
				Middle	5.5	27.9 27.8	27.9	8.7 8.0	8.4	33.9 33.9	33.9	102.0 105.5	103.8	7.5 7.6	7.6		2.8 2.8	2.8		8.0 8.0	8.0	
				Bottom	10	27.8 27.8	27.8	8.2 7.7	8.0	34.1 33.9	34.0	105.5 102.5	104.0	7.7 7.4	7.6		3.1 3.3	3.2		7.0 8.0	7.5	
19-Aug-09	Sunny	Calm	12:22	Surface	1	27.9 27.7	27.8	8.1 7.8	8.0	34.0 34.0	34.0	98.7 97.3	98.0	7.2 7.0	7.1	7.4	2.3 2.3	2.3	3.0	9.0 9.0	9.0	10.5
				Middle	5.5	27.9 27.7	27.8	7.7 6.9	7.3	33.9 34.1	34.0	102.1 105.6	103.9	7.4 7.7	7.6		3.5 3.3	3.4		12.0 12.0	12.0	
				Bottom	10	27.7 27.7	27.7	7.2 6.8	7.0	34.1 34.1	34.1	105.4 102.4	103.9	7.6 7.4	7.5		3.3 3.3	3.3		10.0 11.0	10.5	
21-Aug-09	Sunny	Calm	13:55	Surface	1	27.9 27.9	27.9	9.1 8.8	9.0	34.0 33.9	34.0	98.5 97.4	98.0	7.1 6.9	7.0	7.3	2.0 2.0	2.0	2.6	5.0 5.0	5.0	7.5
				Middle	5.5	27.9 27.9	27.9	8.5 7.8	8.2	34.1 33.9	34.0	102.2 105.6	103.9	7.4 7.6	7.5		2.8 2.9	2.9		7.0 7.0	7.0	
				Bottom	10	27.8 27.7	27.8	8.2 7.7	8.0	33.9 34.1	34.0	105.3 102.3	103.8	7.7 7.4	7.6		2.8 3.0	2.9		11.0 10.0	10.5	

Remarks: * DA: Depth-Averaged

** Calm: Small or no wave; Moderate: Between calm and rough; Rough : White capped or rougher

Water Quality Monitoring Results at CE - Mid-Ebb Tide

Date	Weather Condition	Sea Condition**	Sampling Time	Depth (m)		Water Temperature (°C)		pH		Salinity ppt		DO Saturation (%)		Dissolved Oxygen (mg/L)			Turbidity (NTU)			Suspended Solids (mg/L)			
						Value	Average	Value	Average	Value	Average	Value	Average	Value	Average	DA*	Value	Average	DA*	Value	Average	DA*	
24-Aug-09	Sunny	Calm	09:37	Surface	1	27.9 27.9	27.9	9.0 8.7	8.9	33.9 34.1	34.0	96.7 95.4	96.1	6.9 6.7	6.8	7.1	2.5 2.5	2.5	3.0	9.0 9.0	9.0	11.2	
				Middle	5.5	27.7 27.8	27.8	8.5 7.9	8.2	34.0 34.1	34.1	100.0 103.6	101.8	7.2 7.5	7.4		2.8 3.2	3.0		12.0 12.0			12.0
				Bottom	10	27.8 27.9	27.9	8.3 7.8	8.1	33.9 34.1	34.0	103.4 100.3	101.9	7.4 7.1	7.3		3.4 3.4	3.4		13.0 12.0			12.5
26-Aug-09	Sunny	Calm	11:39	Surface	1	30.4 30.3	30.4	7.4 7.5	7.5	35.2 35.3	35.3	99.7 99.0	99.4	7.0 6.9	7.0	6.9	5.9 6.1	6.0	6.5	15.0 15.0	15.0	11.8	
				Middle	5.5	30.0 30.0	30.0	7.4 7.5	7.5	35.0 35.0	35.0	96.9 97.0	97.0	6.8 6.8	6.8		6.3 6.1	6.2		12.0 12.0			12.0
				Bottom	10	29.8 29.8	29.8	7.8 7.5	7.7	35.5 35.6	35.6	96.7 96.7	96.7	6.8 6.8	6.8		7.3 7.2	7.3		8.0 9.0			8.5
28-Aug-09	Sunny	Calm	08:56	Surface	1	27.7 27.8	27.8	8.9 8.8	8.9	34.0 34.1	34.1	98.6 97.4	98.0	7.3 7.1	7.2	7.5	2.2 2.7	2.5	2.9	18.0 18.0	18.0	11.5	
				Middle	5.5	27.7 27.9	27.8	8.7 7.8	8.3	33.9 34.1	34.0	102.2 105.5	103.9	7.5 7.8	7.7		2.6 3.1	2.9		7.0 8.0			7.5
				Bottom	10	27.8 27.8	27.8	8.1 7.6	7.9	34.0 34.2	34.1	105.4 102.4	103.9	7.7 7.3	7.5		3.3 3.3	3.3		9.0 9.0			9.0
31-Aug-09	Sunny	Calm	10:45	Surface	1	27.8 27.8	27.8	8.9 8.6	8.8	34.0 34.0	34.0	98.7 97.3	98.0	7.1 6.9	7.0	7.3	2.1 2.2	2.2	3.0	7.0 7.0	7.0	7.5	
				Middle	5.5	27.7 27.8	27.8	8.5 7.8	8.2	34.1 34.1	34.1	102.2 105.5	103.9	7.4 7.6	7.5		2.5 3.0	2.8		10.0 10.0			10.0
				Bottom	10	27.7 27.9	27.8	8.3 7.8	8.1	33.9 34.1	34.0	105.5 102.4	104.0	7.7 7.4	7.6		3.6 4.3	4.0		5.0 6.0			5.5

Remarks: * DA: Depth-Averaged

** Calm: Small or no wave; Moderate: Between calm and rough; Rough : White capped or rougher

Water Quality Monitoring Results at CF - Mid-Flood Tide

Date	Weather Condition	Sea Condition**	Sampling Time	Depth (m)		Water Temperature (°C)		pH		Salinity ppt		DO Saturation (%)		Dissolved Oxygen (mg/L)		Turbidity(NTU)			Suspended Solids (mg/L)			
						Value	Average	Value	Average	Value	Average	Value	Average	Value	Average	DA*	Value	Average	DA*	Value	Average	DA*
3-Aug-09	Rainy	Calm	17:03	Surface	1	27.7 27.8	27.8	8.0 8.5	8.3	33.2 33.5	33.4	99.9 101.5	100.7	7.0 6.9	7.0	7.0	2.1 2.1	2.1	2.4	8.0 8.0	8.0	9.5
				Middle	-	-	-	-	-	-	-	-	-	-	-		-	-		-		
				Bottom	3	27.8 27.8	27.8	8.9 8.7	8.8	33.5 33.6	33.6	93.6 99.3	96.5	6.5 6.8	6.7		2.7 2.7	2.7		11.0 11.0	11.0	
5-Aug-09	Rainy	Calm	17:03	Surface	1	27.7 27.7	27.7	8.1 8.4	8.3	33.4 33.3	33.4	105.0 106.6	105.8	7.5 7.6	7.6	7.6	2.0 2.1	2.1	2.7	11.0 11.0	11.0	11.0
				Middle	-	-	-	-	-	-	-	-	-	-	-		-	-				
				Bottom	3	27.7 27.8	27.8	8.8 8.5	8.7	33.6 33.8	33.7	98.6 104.1	101.4	7.1 7.4	7.3		3.3 3.2	3.3		11.0 11.0	11.0	
7-Aug-09	Sunny	Calm	08:02	Surface	1	27.7 27.8	27.8	7.5 8.0	7.8	33.3 33.4	33.4	101.8 103.4	102.6	7.0 7.3	7.2	7.2	6.0 5.4	5.7	5.2	12.0 12.0	12.0	11.0
				Middle	-	-	-	-	-	-	-	-	-	-	-		-					
				Bottom	3	27.8 27.8	27.8	8.3 7.9	8.1	33.5 33.7	33.6	95.7 101.3	98.5	6.5 6.9	6.7		4.5 4.6	4.6		10.0 10.0	10.0	
10-Aug-09	Cloudy	Calm	08:25	Surface	1	27.8 27.8	27.8	7.6 8.1	7.9	33.3 33.5	33.4	100.6 102.3	101.5	7.0 7.2	7.1	7.1	3.5 3.6	3.6	4.4	16.0 15.0	15.5	11.3
				Middle	-	-	-	-	-	-	-	-	-	-	-		-					
				Bottom	3	27.7 27.7	27.7	8.4 8.3	8.4	33.7 33.6	33.7	94.6 100.0	97.3	6.6 7.1	6.9		5.2 5.2	5.2		7.0 7.0	7.0	
12-Aug-09	Fine	Calm	09:53	Surface	1	27.7 27.8	27.8	8.2 8.5	8.4	33.3 33.3	33.3	114.8 116.4	115.6	8.4 8.4	8.4	8.4	1.9 1.9	1.9	2.2	6.0 7.0	6.5	9.3
				Middle	-	-	-	-	-	-	-	-	-	-	-		-					
				Bottom	3	27.7 27.6	27.7	8.8 8.5	8.7	33.6 33.7	33.7	108.6 114.1	111.4	7.9 8.4	8.2		2.5 2.5	2.5		12.0 12.0	12.0	
14-Aug-09	Rainy	Calm	12:05	Surface	1	28.2 28.0	28.1	7.9 8.2	8.1	34.3 34.3	34.3	98.5 99.2	98.9	7.3 7.3	7.3	7.3	2.2 2.2	2.2	2.4	10.0 9.0	9.5	12.8
				Middle	-	-	-	-	-	-	-	-	-	-	-		-					
				Bottom	3	28.0 27.9	28.0	8.1 8.1	8.1	34.3 34.4	34.4	99.2 100.3	99.8	7.3 7.4	7.4		2.6 2.6	2.6		16.0 16.0	16.0	
17-Aug-09	Sunny	Calm	17:03	Surface	1	27.9 27.8	27.9	7.9 8.5	8.2	33.2 33.5	33.4	104.9 106.4	105.7	7.3 7.4	7.4	7.4	1.6 1.6	1.6	1.8	13.0 12.0	12.5	11.3
				Middle	-	-	-	-	-	-	-	-	-	-	-		-					
				Bottom	3	27.7 27.8	27.8	8.9 8.6	8.8	33.6 33.6	33.6	98.7 104.3	101.5	6.8 7.4	7.1		2.0 2.0	2.0		10.0 10.0	10.0	
19-Aug-09	Fine	Calm	17:03	Surface	1	27.9 27.9	27.9	7.2 7.4	7.3	33.4 33.4	33.4	114.9 116.6	115.8	8.5 8.5	8.5	8.5	2.1 2.1	2.1	2.4	8.0 8.0	8.0	10.0
				Middle	-	-	-	-	-	-	-	-	-	-	-		-					
				Bottom	3	27.7 27.7	27.7	7.7 7.9	7.8	33.6 33.7	33.7	114.3 108.8	111.6	8.4 7.9	8.2		2.7 2.6	2.7		12.0 12.0	12.0	

Remarks: * DA: Depth-Averaged

** Calm: Small or no wave; Moderate: Between calm and rough; Rough : White capped or rougher

Water Quality Monitoring Results at I1 - Mid-Ebb Tide

Date	Weather Condition	Sea Condition**	Sampling Time	Depth (m)		Water Temperature (°C)		pH		Salinity ppt		DO Saturation (%)		Dissolved Oxygen (mg/L)		Turbidity (NTU)			Suspended Solids (mg/L)			
						Value	Average	Value	Average	Value	Average	Value	Average	Value	Average	DA*	Value	Average	DA*	Value	Average	DA*
3-Aug-09	Rainy	Calm	11:30	Surface	1	27.7	27.8	8.4	8.1	34.0	34.0	88.1	87.8	6.3	6.3	6.5	2.7	2.8	3.0	8.0	8.0	7.8
						27.9		7.7		34.0		87.5		6.2			2.8			8.0		
				Middle	4.5	27.8	27.8	8.9	9.0	33.9	33.9	93.1	92.5	6.7	6.6		3.0	2.8		7.0	7.5	
		27.7		9.0		33.9		91.8		6.4		2.5		8.0		8.0						
		27.7	27.8	7.6	8.2	34.1	34.0	83.1	87.6	5.9	6.2	3.3	3.5	8.0	8.0							
		27.9		8.8		33.9		92.1		6.5		3.6		8.0								
5-Aug-09	Rainy	Calm	12:30	Surface	1	27.9	27.8	8.3	8.0	34.1	34.1	91.0	90.8	6.7	6.7	6.8	1.9	2.0	2.8	5.0	5.0	7.5
						27.7		7.6		34.1		90.6		6.7			2.1			5.0		
				Middle	4.5	27.7	27.8	8.9	9.0	34.1	34.1	96.1	95.4	6.9	6.9		2.6	2.8		7.0	7.0	
		27.9		9.0		34.1		94.7		6.8		2.9		7.0		11.0						
		27.7	27.8	7.6	8.2	34.1	34.1	86.0	90.5	6.2	6.6	3.4	3.5	11.0	10.5							
		27.8		8.7		34.1		95.0		6.9		3.5		10.0								
7-Aug-09	Sunny	Calm	13:28	Surface	1	27.8	27.9	7.9	7.6	33.8	33.9	91.0	90.8	6.5	6.5	6.8	6.4	6.2	7.1	6.0	6.0	5.8
						27.9		7.2		33.9		90.5		6.5			5.9			6.0		
				Middle	4.5	27.7	27.8	8.5	8.5	34.1	34.1	96.2	95.5	6.9	7.0		8.0	7.3		4.0	4.5	
		27.8		8.5		34.0		94.8		7.0		6.5		5.0		7.0						
		27.9	27.9	7.1	7.7	34.1	34.1	86.2	90.7	6.1	6.6	7.8	7.7	7.0	7.0							
		27.8		8.2		34.1		95.1		7.0		7.5		7.0								
10-Aug-09	Cloudy	Calm	15:08	Surface	1	27.9	27.9	8.0	7.7	33.9	33.9	91.1	90.9	6.5	6.5	6.7	4.4	4.4	5.6	4.0	4.0	7.7
						27.8		7.3		33.8		90.7		6.4			4.4			4.0		
				Middle	4.5	27.8	27.9	8.3	8.4	34.0	34.0	96.1	95.4	7.0	6.9		7.1	6.5		10.0	10.0	
		27.9		8.4		34.0		94.7		6.7		5.9		10.0								
		27.7	27.7	7.2	7.7	33.9	33.9	86.2	90.7	6.4	6.7	6.0	6.0	9.0	9.0							
		27.7		8.2		33.9		95.1		6.9		6.0		9.0								
12-Aug-09	Fine	Calm	16:08	Surface	1	27.7	27.8	8.4	8.1	34.0	34.1	91.1	90.9	6.5	6.5	6.7	2.1	2.1	3.1	9.0	9.0	7.2
						27.9		7.7		34.1		90.7		6.5			2.1			9.0		
				Middle	4.5	27.8	27.9	8.8	8.8	34.1	34.0	96.3	95.5	6.9	6.9		3.3	3.3		5.0	5.5	
		27.9		8.8		33.9		94.7		6.8		3.3		6.0		7.0						
		27.8	27.9	7.9	8.2	34.1	34.1	86.1	90.6	6.1	6.5	3.9	3.9	7.0	7.0							
		27.9		8.5		34.1		95.1		6.9		3.9		7.0								
14-Aug-09	Cloudy	Calm	17:01	Surface	1	28.0	28.0	8.0	7.9	34.4	34.4	89.9	89.9	6.6	6.6	6.7	1.7	1.7	2.0	8.0	8.0	8.5
						28.0		7.8		34.4		89.9		6.6			1.6			8.0		
				Middle	4.5	27.6	27.6	8.1	8.1	34.4	34.4	90.6	89.9	6.7	6.7		2.0	2.0		12.0	11.5	
		27.6		8.0		34.4		89.1		6.6		2.0		11.0								
		27.6	27.6	8.0	7.9	34.4	34.4	88.7	88.7	6.6	6.6	2.4	2.4	6.0	6.0							
		27.6		7.8		34.3		88.7		6.6		2.4		6.0								
17-Aug-09	Sunny	Calm	10:08	Surface	1	27.9	27.9	8.4	8.0	34.0	34.1	91.0	90.9	6.6	6.6	6.8	2.3	2.4	3.1	7.0	7.5	8.8
						27.9		7.5		34.1		90.7		6.6			2.4			8.0		
				Middle	4.5	27.7	27.7	8.8	8.8	34.0	34.0	96.1	95.4	7.0	6.9		3.1	3.1		9.0	9.0	
		27.7		8.8		34.0		94.7		6.8		3.1		9.0								
		27.9	27.9	7.7	8.2	34.1	34.1	86.0	90.6	6.3	6.6	3.9	3.8	10.0	10.0							
		27.8		8.6		34.0		95.1		6.9		3.7		10.0								
19-Aug-09	Sunny	Calm	11:55	Surface	1	27.8	27.8	7.5	7.0	34.1	34.1	91.0	90.8	6.6	6.7	6.9	1.7	1.8	2.7	9.0	9.0	9.0
						27.8		6.5		34.0		90.5		6.7			1.9			9.0		
				Middle	4.5	27.8	27.9	7.8	7.9	33.9	34.0	96.3	95.5	7.1	7.1		2.6	2.6		10.0	10.0	
		27.9		7.9		34.0		94.7		7.0		2.5		10.0								
		27.8	27.8	6.9	7.2	34.1	34.0	86.2	90.7	6.2	6.5	3.7	3.8	8.0	8.0							
		27.8		7.5		33.9		95.1		6.8		3.9		8.0								
21-Aug-09	Sunny	Calm	13:27	Surface	1	27.9	27.9	8.5	8.0	34.0	34.0	91.0	90.8	6.5	6.6	6.8	2.4	2.6	2.7	11.0	11.0	6.8
						27.8		7.4		33.9		90.5		6.6			2.7			11.0		
				Middle	4.5	27.9	27.9	8.9	8.9	33.9	33.9	96.2	95.6	6.9	6.9		2.9	3.0		6.0	6.0	
		27.9		8.8		33.9		94.9		6.8		3.1		6.0								
		27.7	27.8	7.7	8.2	34.1	34.1	86.1	90.6	6.3	6.6	2.4	2.4	3.0	3.5							
		27.8		8.7		34.1		95.0		6.9		2.4		4.0								

Remarks: * DA: Depth-Averaged

** Calm: Small or no wave; Moderate: Between calm and rough; Rough : White capped or rougher

Water Quality Monitoring Results at I1 - Mid-Ebb Tide

Date	Weather Condition	Sea Condition**	Sampling Time	Depth (m)		Water Temperature (°C)		pH		Salinity ppt		DO Saturation (%)		Dissolved Oxygen (mg/L)			Turbidity (NTU)			Suspended Solids (mg/L)		
						Value	Average	Value	Average	Value	Average	Value	Average	Value	Average	DA*	Value	Average	DA*	Value	Average	DA*
24-Aug-09	Sunny	Calm	09:09	Surface	1	27.8	27.8	8.3	7.9	33.9	34.0	89.0	88.8	6.3	6.4	6.6	2.2	2.3	3.0	8.0	8.0	6.3
						27.8		7.4		34.1		88.5		6.5			2.4			8.0		
				Middle	4.5	27.8	27.9	8.9	9.0	34.0	34.0	94.1	93.5	6.7	6.7		2.9	3.0		6.0	6.0	
		27.9		9.0		33.9		92.9		6.7		6.7	3.0		6.0							
		27.8	27.8	7.8	8.2	33.9	34.0	84.0	88.6	5.9	6.3	6.3	3.7	3.8	5.0	5.0						
		27.8		8.6		34.1		93.2		6.6		6.3	3.8		5.0							
26-Aug-09	Sunny	Calm	11:17	Surface	1	31.0	31.0	8.1	7.8	34.8	34.8	97.2	97.9	6.7	6.8	6.8	5.6	5.7	6.3	10.0	10.0	8.2
						31.0		7.5		34.8		98.6		6.8			5.7			10.0		
				Middle	4.5	30.5	30.5	7.9	8.0	35.0	35.1	98.1	98.0	6.8	6.8		6.3	6.4		6.0	6.0	
		30.5		8.0		35.1		97.8		6.8		6.8	6.5		6.0							
		30.3	30.3	7.7	7.6	35.3	35.3	96.2	96.2	6.7	6.7	6.7	6.9	6.9	9.0	8.5						
		30.3		7.4		35.2		96.1		6.7		6.7	6.8		8.0							
28-Aug-09	Sunny	Calm	08:28	Surface	1	27.9	27.9	8.5	8.1	33.8	34.0	91.0	90.8	6.6	6.5	6.8	1.9	2.0	2.7	4.0	4.0	6.7
						27.9		7.6		34.1		90.5		6.4			2.0			4.0		
				Middle	4.5	27.9	27.9	9.0	8.9	33.9	34.0	96.2	95.5	7.0	7.0		2.2	2.4		7.0	7.0	
		27.9		8.7		34.0		94.8		6.9		7.0	2.5		7.0							
		27.8	27.8	7.8	8.3	33.9	34.0	86.1	90.7	6.3	6.6	6.6	3.2	3.6	9.0	9.0						
		27.8		8.7		34.1		95.2		6.9		6.6	4.0		9.0							
31-Aug-09	Sunny	Calm	10:18	Surface	1	27.8	27.9	8.5	8.1	34.1	34.0	91.2	90.9	6.6	6.7	6.8	2.2	2.2	3.1	6.0	6.5	6.5
						27.9		7.7		33.9		90.5		6.7			2.1			7.0		
				Middle	4.5	27.9	27.9	8.9	8.9	33.9	34.0	96.1	95.4	6.9	6.9		3.1	3.4		7.0	7.0	
		27.9		8.9		34.1		94.7		6.9		6.9	3.6		7.0							
		27.9	27.9	7.7	8.1	34.0	34.0	86.1	90.6	6.2	6.6	6.6	3.6	3.8	6.0	6.0						
		27.8		8.5		33.9		95.0		6.9		6.6	4.0		6.0							

Remarks: * DA: Depth-Averaged

** Calm: Small or no wave; Moderate: Between calm and rough; Rough : White capped or rougher

Water Quality Monitoring Results at I1 - Mid-Flood Tide

Date	Weather Condition	Sea Condition**	Sampling Time	Depth (m)		Water Temperature (°C)		pH		Salinity ppt		DO Saturation (%)		Dissolved Oxygen (mg/L)			Turbidity(NTU)			Suspended Solids (mg/L)		
						Value	Average	Value	Average	Value	Average	Value	Average	Value	Average	DA*	Value	Average	DA*	Value	Average	DA*
3-Aug-09	Rainy	Calm	17:40	Surface	1	27.8	27.8	8.0	8.1	34.1	34.1	92.0	91.9	6.7	6.6	6.5	1.1	1.1	1.8	10.0	10.0	11.2
						27.7		8.1		34.0		91.7		6.5			1.1			10.0		
				Middle	4.5	27.9	27.9	8.2	8.2	34.0	34.0	86.4	89.6	6.2	6.4		1.8	1.9		11.0	11.0	
				27.9		8.2		34.0		92.8		6.6		6.4		1.9		11.0				
				Bottom	8	27.8	27.9	8.5	8.5	33.9	34.1	94.7	94.9	6.7	6.8	6.8	2.6	2.4		13.0	12.5	
						27.9		8.5		34.2		95.1		6.9		6.8	2.1	2.4		12.0		
5-Aug-09	Rainy	Calm	17:40	Surface	1	27.7	27.8	8.0	8.2	34.0	34.0	91.8	91.8	6.8	6.8	6.7	1.3	1.3	1.9	9.0	9.0	6.8
						27.9		8.3		33.9		91.7		6.7			1.2			9.0		
				Middle	4.5	27.9	27.9	8.0	8.1	33.9	34.0	86.4	89.7	6.1	6.5		1.6	1.5		7.0	7.0	
				27.8		8.1		34.0		92.9		6.8		6.5	1.4		7.0					
				Bottom	8	27.7	27.8	8.6	8.6	34.1	34.1	94.8	95.0	6.9	7.0	7.0	2.8	2.8		4.0	4.5	
						27.9		8.5		34.0		95.1		7.0		7.0	2.7	2.8		5.0		
7-Aug-09	Sunny	Calm	08:40	Surface	1	27.8	27.8	7.5	7.7	34.0	34.0	91.9	91.8	6.6	6.6	6.6	4.7	4.7	5.5	5.0	5.0	5.2
						27.7		7.8		33.9		91.6		6.6			4.6			5.0		
				Middle	4.5	27.8	27.8	7.5	7.6	34.0	34.0	86.2	89.6	6.3	6.5		4.9	5.3		4.0	4.5	
				27.7		7.7		34.0		92.9		6.7		6.5	5.7		4.5					
				Bottom	8	27.8	27.8	8.0	8.1	33.9	34.0	94.8	95.1	6.9	7.0	7.0	6.8	6.4		6.0	6.0	
						27.7		8.2		34.0		95.3		7.0		7.0	5.9	6.4		6.0		
10-Aug-09	Cloudy	Calm	09:02	Surface	1	27.7	27.7	7.5	7.7	33.9	34.0	91.9	91.8	6.5	6.5	6.5	5.1	5.1	4.1	10.0	10.0	7.8
						27.7		7.9		34.1		91.6		6.5			5.1			10.0		
				Middle	4.5	27.7	27.8	7.9	7.9	34.1	34.1	86.4	89.6	6.1	6.4		3.0	3.0		5.0	5.0	
				27.8		7.9		34.1		92.7		6.7		6.4	3.0		5.0					
				Bottom	8	27.9	27.9	8.2	8.2	34.2	34.1	94.8	95.0	6.7	6.8	6.8	4.2	4.3		8.0	8.5	
						27.9		8.1		34.0		95.2		6.9		6.8	4.3	4.3		9.0		
12-Aug-09	Fine	Calm	10:30	Surface	1	27.7	27.8	8.1	8.2	34.0	34.0	92.0	91.8	6.6	6.7	6.6	1.2	1.3	1.8	7.0	7.0	7.7
						27.9		8.2		34.0		91.5		6.8			1.3			7.0		
				Middle	4.5	27.8	27.8	8.0	8.1	34.1	34.1	86.2	89.5	6.3	6.5		1.6	1.8		7.0	7.0	
				27.7		8.2		34.1		92.7		6.6		6.5	2.0		7.0					
				Bottom	8	27.8	27.8	8.5	8.6	34.0	34.1	94.7	94.9	6.7	6.8	6.8	2.3	2.4		9.0	9.0	
						27.8		8.7		34.1		95.1		6.8		6.8	2.4	2.4		9.0		
14-Aug-09	Rainy	Calm	13:00	Surface	1	28.0	28.0	7.8	7.8	34.3	34.3	104.4	104.4	7.6	7.6	7.4	2.4	2.4	2.8	7.0	6.5	8.8
						28.0		7.8		34.3		104.4		7.6			2.4			6.0		
				Middle	4.5	27.9	27.9	8.0	8.0	34.3	34.3	96.4	96.4	7.1	7.1		2.8	2.8		7.0	7.0	
				27.9		7.9		34.3		96.4		7.1		7.1	2.8		7.0					
				Bottom	8	27.8	27.8	7.9	8.0	34.3	34.3	95.9	95.9	7.1	7.1	7.1	3.2	3.2		13.0	13.0	
						27.8		8.1		34.3		95.9		7.1		7.1	3.2	3.2		13.0		
17-Aug-09	Sunny	Calm	17:40	Surface	1	27.7	27.7	8.1	8.2	33.8	34.0	91.8	91.8	6.5	6.5	6.6	1.4	1.4	1.7	12.0	12.5	13.2
						27.7		8.2		34.1		91.7		6.5			1.4			13.0		
				Middle	4.5	27.8	27.8	8.2	8.2	33.9	34.0	86.3	89.6	6.4	6.6		1.4	1.5		13.0	13.0	
				27.8		8.2		34.1		92.9		6.7		6.6	1.5		13.0					
				Bottom	8	27.9	27.9	8.5	8.5	33.9	34.0	94.7	95.0	6.9	6.9	6.9	2.3	2.3		14.0	14.0	
						27.9		8.5		34.1		95.2		6.9		6.9	2.3	2.3		14.0		
19-Aug-09	Fine	Calm	17:40	Surface	1	27.8	27.8	6.9	7.1	34.0	34.0	91.9	91.7	6.6	6.7	6.7	1.7	1.7	2.2	7.0	7.5	10.8
						27.7		7.2		33.9		91.5		6.7			1.7			8.0		
				Middle	4.5	27.7	27.7	7.1	7.2	34.0	34.1	86.4	89.6	6.4	6.6		2.1	2.1		9.0	9.0	
				27.7		7.2		34.1		92.7		6.7		6.6	2.1		9.0					
				Bottom	8	27.8	27.8	7.7	7.7	33.9	33.9	94.6	94.9	6.8	6.9	6.9	2.7	2.7		16.0	16.0	
						27.7		7.7		33.9		95.1		6.9		6.9	2.7	2.7		16.0		
21-Aug-09	Sunny	Calm	08:39	Surface	1	27.8	27.9	7.9	8.0	33.9	34.0	92.0	91.8	6.7	6.7	6.6	1.2	1.2	1.6	4.0	4.0	5.0
						27.9		8.1		34.1		91.6		6.6			1.2			4.0		
				Middle	4.5	27.8	27.9	8.3	8.3	34.1	34.0	86.2	89.5	6.2	6.5		1.1	1.2		6.0	6.0	
				27.9		8.2		33.9		92.7		6.8		6.5	1.3		6.0					
				Bottom	8	27.7	27.8	8.6	8.6	33.9	34.0	94.7	94.9	6.8	6.9	6.9	2.3	2.4		5.0	5.0	
						27.9		8.6		34.1		95.1		6.9		6.9	2.5	2.4		5.0		

Remarks: * DA: Depth-Averaged

** Calm: Small or no wave; Moderate: Between calm and rough; Rough : White capped or rougher

Water Quality Monitoring Results at I1 - Mid-Flood Tide

Date	Weather Condition	Sea Condition**	Sampling Time	Depth (m)		Water Temperature (°C)		pH		Salinity ppt		DO Saturation (%)		Dissolved Oxygen (mg/L)			Turbidity(NTU)			Suspended Solids (mg/L)		
						Value	Average	Value	Average	Value	Average	Value	Average	Value	Average	DA*	Value	Average	DA*	Value	Average	DA*
24-Aug-09	Sunny	Calm	15:37	Surface	1	27.7 27.7	27.7	8.0 8.1	8.1	33.9 34.1	34.0	90.3 90.2	90.3	6.4 6.4	6.4	6.6	1.9 1.9	1.9	2.0	8.0 8.0	8.0	9.3
				Middle	4.5	27.8 27.9	27.9	8.3 8.1	8.2	34.1 33.9	34.0	92.4 91.2	91.8	6.7 6.6	6.7		1.2 1.3	1.3		12.0 12.0	12.0	
				Bottom	8	27.8 27.8	27.8	8.7 8.7	8.7	34.0 33.9	34.0	93.3 93.7	93.5	6.8 6.8	6.8		2.7 2.7	2.7		8.0 8.0	8.0	
26-Aug-09	Sunny	Calm	16:18	Surface	1	30.5 30.5	30.5	7.4 7.3	7.4	34.5 34.5	34.5	100.1 100.1	100.1	7.0 7.0	7.0	7.0	5.4 5.4	5.4	5.7	9.0 9.0	9.0	7.8
				Middle	4.5	30.0 30.0	30.0	8.0 7.7	7.9	35.0 35.0	35.0	99.9 99.7	99.8	7.0 7.0	7.0		6.1 6.1	6.1		9.0 10.0	9.5	
				Bottom	8	30.0 30.0	30.0	7.6 7.8	7.7	35.6 35.6	35.6	99.0 98.7	98.9	6.9 6.9	6.9		5.4 5.7	5.6		5.0 5.0	5.0	
31-Aug-09	Cloudy	Calm	17:40	Surface	1	27.9 27.8	27.9	7.8 8.1	8.0	33.9 33.9	33.9	91.9 91.5	91.7	6.7 6.6	6.7	6.6	1.6 1.8	1.7	2.0	11.0 10.0	10.5	6.8
				Middle	4.5	27.8 27.7	27.8	8.1 8.3	8.2	33.8 34.1	34.0	86.3 92.9	89.6	6.2 6.6	6.4		2.1 2.1	2.1		6.0 6.0	6.0	
				Bottom	8	27.7 27.8	27.8	8.5 8.5	8.5	34.0 34.0	34.0	94.8 95.2	95.0	7.0 7.0	7.0		1.9 2.2	2.1		4.0 4.0	4.0	

Remarks: * DA: Depth-Averaged

** Calm: Small or no wave; Moderate: Between calm and rough; Rough : White capped or rougher

Water Quality Monitoring Results at I2 - Mid-Ebb Tide

Date	Weather Condition	Sea Condition**	Sampling Time	Depth (m)		Water Temperature (°C)		pH		Salinity ppt		DO Saturation (%)		Dissolved Oxygen (mg/L)		Turbidity (NTU)			Suspended Solids (mg/L)				
						Value	Average	Value	Average	Value	Average	Value	Average	Value	Average	DA*	Value	Average	DA*	Value	Average	DA*	
3-Aug-09	Rainy	Calm	11:19	Surface	1	27.8 27.8	27.8	8.0 8.5	8.3	34.0 34.0	34.0	90.5 90.4	90.5	6.6 6.5	6.6	6.5	0.9 1.1	1.0	1.6	8.0 8.0	12.0 12.0	8.5	
				Middle	4.5	27.8 27.9	27.9	7.8 8.3	8.1	33.9 34.0	34.0	88.6 87.1	87.9	6.3 6.3	6.3		1.6 1.7	1.7		5.0 6.0			5.5
				Bottom	8	27.9 27.7	27.8	8.4 8.4	8.4	33.9 34.1	34.0	85.1 81.7	83.4	6.3 6.1	6.2		2.0 2.0	2.0		7.0 7.0			7.0
5-Aug-09	Rainy	Calm	12:19	Surface	1	27.9 27.8	27.9	7.9 8.6	8.3	33.9 34.0	34.0	93.5 93.2	93.4	6.8 6.7	6.8	6.7	1.2 1.4	1.3	1.7	7.0 7.0	5.0 5.0	8.0 8.0	
				Middle	4.5	27.8 27.9	27.9	7.8 8.1	8.0	34.1 33.9	34.0	91.7 90.0	90.9	6.6 6.5	6.6		1.4 1.5	1.5		5.0 5.0			5.0
				Bottom	8	27.8 27.9	27.9	8.3 8.3	8.3	34.0 34.0	34.0	88.0 84.8	86.4	6.5 6.4	6.5		2.3 2.3	2.3		8.0 8.0			8.0
7-Aug-09	Sunny	Calm	13:17	Surface	1	27.8 27.8	27.8	7.4 8.1	7.8	34.1 34.1	34.1	93.7 93.2	93.5	6.7 6.9	6.8	6.8	6.2 5.8	6.0	6.2	6.0 6.0	3.0 3.0	4.0	
				Middle	4.5	27.8 27.9	27.9	7.5 7.6	7.6	33.9 33.9	33.9	91.8 90.1	91.0	6.8 6.6	6.7		5.9 5.9	5.9		3.0 3.0			3.0
				Bottom	8	27.8 27.8	27.8	8.0 7.8	7.9	34.1 34.0	34.1	84.9 81.8	83.4	6.3 6.0	6.2		6.2 7.2	6.7		3.0 3.0			3.0
10-Aug-09	Cloudy	Calm	14:57	Surface	1	27.8 28.0	27.9	7.5 8.3	7.9	33.9 34.0	34.0	93.6 93.4	93.5	6.8 6.9	6.9	6.8	5.1 4.3	4.7	4.4	3.0 3.0	3.0 3.0	4.7	
				Middle	4.5	27.7 27.8	27.8	7.7 7.8	7.8	34.1 34.1	34.1	91.6 89.9	90.8	6.6 6.6	6.6		3.6 3.7	3.7		8.0 8.0			8.0
				Bottom	8	27.9 27.9	27.9	8.0 8.1	8.1	33.9 33.9	33.9	88.1 84.6	86.4	6.7 6.3	6.5		4.2 5.2	4.7		7.0 7.0			7.0
12-Aug-09	Fine	Calm	15:57	Surface	1	27.8 27.8	27.8	8.0 8.6	8.3	34.0 33.9	34.0	93.7 93.2	93.5	6.9 6.9	6.9	6.8	1.1 1.2	1.2	1.8	7.0 7.0	4.0 5.0	7.7	
				Middle	4.5	27.9 27.8	27.9	7.9 8.1	8.0	34.1 34.0	34.1	91.8 90.0	90.9	6.8 6.5	6.7		1.7 1.7	1.7		12.0 11.0			11.5
				Bottom	8	27.7 27.9	27.8	8.4 8.3	8.4	34.1 34.1	34.1	85.9 82.7	84.3	6.3 6.3	6.3		2.5 2.5	2.5		7.0 7.0			7.0
14-Aug-09	Cloudy	Calm	16:52	Surface	1	28.0 28.0	28.0	7.9 7.8	7.9	34.4 34.3	34.4	92.6 90.5	91.6	6.8 6.6	6.7	6.7	2.0 2.1	2.1	2.2	7.0 7.0	15.0 14.0	9.8	
				Middle	4.5	27.8 27.7	27.8	8.0 7.9	8.0	34.3 34.3	34.3	91.1 90.1	90.6	6.7 6.6	6.7		2.1 2.1	2.1		8.0 8.0			8.0
				Bottom	8	27.7 27.6	27.7	8.1 8.1	8.1	34.3 34.3	34.3	90.1 87.6	88.9	6.6 6.5	6.6		2.2 2.3	2.3		9.0 9.0			9.0
17-Aug-09	Sunny	Calm	09:57	Surface	1	27.8 27.9	27.9	8.0 8.7	8.4	34.1 33.8	34.0	93.5 93.4	93.5	6.9 6.8	6.9	6.8	1.4 1.4	1.4	1.7	9.0 9.0	13.0 13.0	11.2	
				Middle	4.5	27.8 27.9	27.9	8.0 8.1	8.1	33.9 34.1	34.0	91.8 90.0	90.9	6.7 6.5	6.6		1.1 1.0	1.1		12.0 11.0			11.5
				Bottom	8	27.7 27.9	27.8	8.4 8.5	8.5	34.1 33.9	34.0	86.0 82.8	84.4	6.5 6.1	6.3		2.7 2.7	2.7		9.0 9.0			9.0
19-Aug-09	Sunny	Calm	11:44	Surface	1	28.0 27.9	28.0	7.1 7.6	7.4	33.9 34.0	34.0	93.6 93.4	93.5	6.8 6.6	6.7	6.7	1.9 1.7	1.8	2.2	19.0 18.0	4.0 5.0	10.7	
				Middle	4.5	27.9 27.8	27.9	7.0 7.3	7.2	34.0 34.1	34.1	91.6 90.0	90.8	6.8 6.6	6.7		1.9 2.1	2.0		9.0 9.0			9.0
				Bottom	8	27.8 27.7	27.8	7.5 7.5	7.5	34.0 34.1	34.1	78.8 75.7	77.3	6.5 6.4	6.5		2.7 2.7	2.7		13.0 13.0			13.0
21-Aug-09	Sunny	Calm	13:16	Surface	1	27.9 27.8	27.9	8.1 8.7	8.4	33.9 33.9	33.9	93.5 93.4	93.5	6.9 6.8	6.9	6.8	1.5 1.6	1.6	1.8	13.0 13.0	6.0 6.0	7.7	
				Middle	4.5	27.9 27.8	27.9	8.0 8.2	8.1	34.1 34.1	34.1	91.7 90.1	90.9	6.8 6.5	6.7		1.6 1.7	1.7		4.0 4.0			4.0
				Bottom	8	27.7 27.9	27.8	8.4 8.5	8.5	34.1 34.1	34.1	85.1 81.7	83.4	6.2 6.1	6.2		2.1 2.2	2.2		4.0 4.0			4.0

Remarks: * DA: Depth-Averaged

** Calm: Small or no wave; Moderate: Between calm and rough; Rough : White capped or rougher

Water Quality Monitoring Results at I2 - Mid-Ebb Tide

Date	Weather Condition	Sea Condition**	Sampling Time	Depth (m)		Water Temperature (°C)		pH		Salinity ppt		DO Saturation (%)		Dissolved Oxygen (mg/L)			Turbidity (NTU)			Suspended Solids (mg/L)				
						Value	Average	Value	Average	Value	Average	Value	Average	Value	Average	DA*	Value	Average	DA*	Value	Average	DA*		
24-Aug-09	Sunny	Calm	08:58	Surface	1	27.9	27.9	8.0	8.3	33.8	33.9	91.5	91.4	6.6	6.6	6.5	1.8	1.9	1.8	7.0	6.5	7.2		
						27.9		8.6		34.0		91.2		6.5			1.9			6.0			6.0	
				Middle	4.5	27.8	27.8	8.0	8.1	34.0	34.1	89.6	88.8	6.5	6.4		1.3	1.3		6.0	6.0			
				Bottom	8	27.8	27.8	8.3	8.3	34.0	34.0	83.5	83.0	6.3	6.3	6.3	2.1	2.1		9.0	9.0			
						27.7		8.3		33.9		82.4		6.3		6.3	2.1			9.0				
26-Aug-09	Sunny	Calm	11:11	Surface	1	30.9	31.0	7.3	7.3	34.0	34.2	99.0	99.1	6.9	6.9	6.9	5.7	5.7	5.8	8.0	8.0	8.7		
						31.0		7.3		34.4		99.2		6.9			5.6			8.0				
				Middle	4.5	30.8	30.8	7.2	7.5	34.5	34.7	99.2	99.2	6.9	6.9		5.9	5.9		10.0	10.0			
				Bottom	8	30.2	30.2	8.0	8.0	35.3	35.3	95.5	95.4	6.6	6.6	6.6	5.7	5.8		8.0	8.0			
						30.2		8.0		35.3		95.3		6.6		6.6	5.8			8.0				
28-Aug-09	Sunny	Calm	08:17	Surface	1	27.9	27.9	8.2	8.5	34.0	33.9	93.6	93.4	6.8	6.9	6.7	1.3	1.3	1.9	8.0	8.0	9.5		
						27.8		8.7		33.8		93.2		6.9			1.3			8.0				
				Middle	4.5	27.8	27.8	7.9	8.1	33.8	34.0	91.6	90.8	6.6	6.5		1.6	1.6		7.0	7.5			
				Bottom	8	27.9	27.9	8.3	8.3	34.0	34.0	85.0	83.4	6.3	6.2	6.2	2.8	2.8		13.0	13.0			
						27.8		8.3		33.9		81.8		6.0		6.2	2.8			13.0				
31-Aug-09	Sunny	Calm	10:07	Surface	1	27.9	27.9	8.0	8.3	34.0	34.0	93.6	93.5	6.7	6.8	6.7	1.1	1.1	1.7	9.0	9.0	7.3		
						27.8		8.6		33.9		93.4		6.8			1.1			9.0				
				Middle	4.5	27.7	27.7	8.0	8.2	34.0	34.1	91.7	90.9	6.5	6.5		1.7	1.7		6.0	6.0			
				Bottom	8	27.7		8.3		34.1		90.0		6.5		6.5	1.7			6.0				
						27.8	27.9	8.3	8.3	34.0	34.0	86.1	84.6	6.4	6.3	6.3	2.3	2.4		7.0	7.0			
						27.9		8.3		33.9		83.0		6.2		6.3	2.4			7.0				

Remarks: * DA: Depth-Averaged

** Calm: Small or no wave; Moderate: Between calm and rough; Rough : White capped or rougher

Water Quality Monitoring Results at I2 - Mid-Flood Tide

Date	Weather Condition	Sea Condition**	Sampling Time	Depth (m)		Water Temperature (°C)		pH		Salinity ppt		DO Saturation (%)		Dissolved Oxygen (mg/L)			Turbidity(NTU)			Suspended Solids (mg/L)				
						Value	Average	Value	Average	Value	Average	Value	Average	Value	Average	DA*	Value	Average	DA*	Value	Average	DA*		
3-Aug-09	Rainy	Calm	17:30	Surface	1	27.9	27.9	7.7	7.9	34.0	34.1	90.5	90.4	6.5	6.5	6.5	1.9	2.0	2.8	8.0	8.0	11.0		
						27.8		8.0		34.1		90.3		6.4			2.0			2.8			12.0	
				Middle	4.5	27.7	27.8	7.9	8.4	34.0	34.1	90.6	90.1	6.6	6.5		2.5	2.7		2.5	2.7		13.0	13.0
		27.9	27.8	8.3	8.5	33.9	34.0	92.8	93.4	6.7	6.8	3.6	3.7	3.6	3.7	3.6	3.7	13.0	13.0					
5-Aug-09	Rainy	Calm	17:30	Surface	1	27.8	27.9	7.5	7.9	34.1	34.1	90.5	90.4	6.6	6.5	6.6	2.3	2.3	3.1	18.0	18.0	12.8		
						28.0		8.2		34.0		90.3		6.4			2.2			3.1			10.0	
				Middle	4.5	27.7	27.7	8.7	8.3	34.1	34.0	89.4	90.0	6.6	6.6		3.0	3.1		3.0	3.1		11.0	10.5
		27.9	27.9	8.4	8.6	34.1	34.1	92.8	93.3	6.6	6.7	3.9	4.0	3.9	4.0	3.9	4.0	10.0	10.0					
		27.8	27.8	8.8		34.0		93.8		6.8	6.7	4.0	4.0	4.0	4.0	4.0	4.0	10.0	10.0					
7-Aug-09	Sunny	Calm	08:29	Surface	1	27.8	27.8	7.1	7.4	33.9	33.9	90.5	90.4	6.5	6.5	6.5	5.4	5.4	6.0	5.0	5.0	4.3		
						27.8		7.7		33.8		90.3		6.4			5.3			6.0			4.0	
				Middle	4.5	27.8	27.9	8.1	7.8	34.0	34.0	89.6	90.2	6.5	6.5		6.0	6.0		6.0	6.0		4.0	4.0
		27.9	27.9	7.5		34.0		90.7		6.5		6.7	6.7	6.7	6.7	6.7	6.7	4.0	4.0					
		27.8	27.8	8.0	8.1	33.9	34.0	92.8	93.4	6.7	6.8	6.8	6.8	6.8	6.8	6.8	6.8	4.0	4.0					
		27.8	27.8	8.1		34.1		94.0		6.8		6.7	6.7	6.7	6.7	6.7	6.7	4.0	4.0					
10-Aug-09	Cloudy	Calm	08:52	Surface	1	28.0	27.9	7.3	7.6	33.8	34.0	90.4	90.4	6.7	6.6	6.6	4.4	4.4	5.2	17.0	17.0	11.0		
						27.8		7.8		34.1		90.3		6.4			4.4			4.6			6.0	
				Middle	4.5	27.9	27.9	8.2	7.8	34.1	34.0	89.4	90.1	6.5	6.5		4.7	4.7		4.7	4.7		6.0	6.0
		27.8	27.8	7.3		33.9		90.7		6.5		6.5	6.5	6.5	6.5	6.5	6.5	6.5	6.5					
		27.7	27.8	8.0	8.2	33.9	34.0	92.8	93.3	6.7	6.8	6.8	6.8	6.8	6.8	6.8	6.8	10.0	10.0					
		27.8	27.8	8.3		34.0		93.8		6.8		6.8	6.8	6.8	6.8	6.8	6.8	10.0	10.0					
12-Aug-09	Fine	Calm	10:20	Surface	1	27.8	27.9	7.7	7.9	33.8	33.8	90.6	90.4	6.7	6.7	6.7	1.9	2.0	2.6	4.0	4.5	9.8		
						27.9		8.0		33.8		90.2		6.6			2.0			2.7			5.0	
				Middle	4.5	27.9	27.9	8.5	8.2	34.0	34.0	89.6	90.2	6.5	6.6		2.7	2.7		2.7	2.7		18.0	18.0
		27.9	27.9	7.8		34.0		90.7		6.6		6.6	6.6	6.6	6.6	6.6	6.6	7.0	7.0					
		27.9	27.9	8.5	8.6	34.1	34.1	92.8	93.4	6.7	6.7	6.7	6.7	6.7	6.7	6.7	6.7	7.0	7.0					
		27.9	27.9	8.6		34.0		93.9		6.7		6.7	6.7	6.7	6.7	6.7	6.7	3.1	3.2					
14-Aug-09	Rainy	Calm	12:48	Surface	1	28.0	28.0	7.7	7.8	34.3	34.4	95.7	95.8	7.0	7.1	7.0	2.0	2.1	2.5	9.0	9.0	10.3		
						28.0		7.8		34.4		95.9		7.1			2.1			2.4			11.0	
				Middle	4.5	28.0	28.0	7.7	7.8	34.3	34.3	93.2	93.3	6.9	6.9		2.4	2.4		2.4	2.4		11.0	11.0
		28.0	28.0	7.8		34.3		93.4		6.9		6.9	6.9	6.9	6.9	6.9	6.9	11.0	11.0					
		27.9	27.9	7.8	7.7	34.2	34.2	92.3	92.3	6.8	6.8	6.8	6.8	6.8	6.8	6.8	6.8	2.8	2.9					
		27.8	27.9	7.6		34.2		92.3		6.8		6.8	6.8	6.8	6.8	6.8	6.8	2.9	2.9					
17-Aug-09	Sunny	Calm	17:30	Surface	1	28.0	27.9	7.5	7.8	33.9	33.9	90.5	90.5	6.6	6.6	6.6	1.5	1.5	2.1	13.0	13.0	10.8		
						27.8		8.1		33.8		90.4		6.5			1.5			2.0			9.0	
				Middle	4.5	27.8	27.9	8.5	8.1	33.9	34.0	89.4	90.0	6.5	6.6		2.1	2.1		2.1	2.1		10.0	9.5
		27.9	27.8	7.7		34.0		90.5		6.7		6.6	6.6	6.6	6.6	6.6	6.6	10.0	10.0					
		27.9	27.8	8.5	8.7	34.1	34.1	92.9	93.4	6.6	6.8	6.8	6.8	6.8	6.8	6.8	6.8	2.8	2.8					
		27.7	27.8	8.8		34.1		93.9		6.9		6.8	6.8	6.8	6.8	6.8	6.8	2.8	2.8					
19-Aug-09	Fine	Calm	17:30	Surface	1	27.9	27.9	6.6	6.8	33.9	33.9	90.4	90.3	6.5	6.5	6.6	2.1	2.1	2.5	8.0	8.0	10.2		
						27.9		7.0		33.8		90.2		6.5			2.1			2.5			12.0	
				Middle	4.5	27.7	27.7	7.7	7.4	33.9	34.0	89.4	90.0	6.5	6.6		2.5	2.5		2.5	2.5		11.0	11.5
		27.7	27.7	7.0		34.0		90.5		6.6		6.6	6.6	6.6	6.6	6.6	6.6	11.0	11.0					
		27.9	27.9	7.3	7.5	33.9	34.0	92.7	93.3	6.8	6.8	6.8	6.8	6.8	6.8	6.8	6.8	2.8	2.9					
		27.9	27.9	7.6		34.0		93.8		6.7		6.8	6.8	6.8	6.8	6.8	6.8	2.9	2.9					
21-Aug-09	Sunny	Calm	08:29	Surface	1	27.9	27.9	7.7	8.0	34.1	34.1	90.5	90.4	6.5	6.6	6.7	2.1	2.1	2.6	4.0	4.0	6.7		
						27.8		8.2		34.1		90.3		6.7			2.1			2.4			8.0	
				Middle	4.5	27.9	27.8	8.7	8.3	33.9	34.0	89.4	90.1	6.6	6.7		2.4	2.4		2.4	2.4		8.0	8.0
		27.7	27.8	7.9		34.0		90.7		6.7		6.7	6.7	6.7	6.7	6.7	6.7	8.0	8.0					
		27.8	27.9	8.4	8.5	33.9	34.0	92.8	93.4	6.8	6.8	6.8	6.8	6.8	6.8	6.8	6.8	3.2	3.2					
		27.9	27.9	8.5		34.0		93.9		6.7		6.7	6.7	6.7	6.7	6.7	6.7	3.1	3.1					

Remarks: * DA: Depth-Averaged

** Calm: Small or no wave; Moderate: Between calm and rough; Rough : White capped or rougher

Water Quality Monitoring Results at I2 - Mid-Flood Tide

Date	Weather Condition	Sea Condition**	Sampling Time	Depth (m)		Water Temperature (°C)		pH		Salinity ppt		DO Saturation (%)		Dissolved Oxygen (mg/L)			Turbidity(NTU)			Suspended Solids (mg/L)		
						Value	Average	Value	Average	Value	Average	Value	Average	Value	Average	DA*	Value	Average	DA*	Value	Average	DA*
24-Aug-09	Sunny	Calm	15:27	Surface	1	28.0 27.9	28.0	7.7 8.2	8.0	33.9 34.0	34.0	89.0 88.7	88.9	6.3 6.5	6.4	6.4	1.6 1.6	1.6	2.0	8.0 8.0	8.0	7.3
				Middle	4.5	27.9 27.8	27.9	8.7 7.8	8.3	33.8 33.9	33.9	87.9 89.2	88.6	6.4 6.4	6.4		2.1 2.1	2.1		9.0 9.0	9.0	
				Bottom	8	27.9 27.7	27.8	8.3 8.8	8.6	34.1 34.2	34.2	90.8 91.8	91.3	6.6 6.7	6.7		2.4 2.3	2.4		5.0 5.0	5.0	
26-Aug-09	Sunny	Calm	16:12	Surface	1	30.5 30.4	30.5	8.2 7.7	8.0	35.2 35.2	35.2	101.9 102.0	102.0	7.1 7.1	7.1	7.1	5.6 5.7	5.7	5.9	7.0 7.0	7.0	9.7
				Middle	4.5	30.3 30.2	30.3	7.7 7.9	7.8	35.3 35.3	35.3	101.8 101.5	101.7	7.1 7.1	7.1		5.5 5.4	5.5		15.0 15.0	15.0	
				Bottom	8	29.9 29.9	29.9	7.5 7.3	7.4	35.7 35.7	35.7	100.0 99.3	99.7	7.0 6.9	7.0		6.2 6.6	6.4		7.0 7.0	7.0	
31-Aug-09	Cloudy	Calm	17:30	Surface	1	28.0 27.8	27.9	7.5 8.2	7.9	34.1 34.1	34.1	90.5 90.3	90.4	6.5 6.7	6.6	6.7	1.9 1.9	1.9	2.3	5.0 6.0	5.5	8.5
				Middle	4.5	27.7 27.7	27.7	8.6 7.8	8.2	33.9 34.1	34.0	89.4 90.5	90.0	6.6 6.7	6.7		2.1 2.1	2.1		11.0 11.0	11.0	
				Bottom	8	27.7 27.7	27.7	8.3 8.6	8.5	34.1 34.1	34.1	92.7 94.0	93.4	6.7 6.7	6.7		3.0 3.0	3.0		9.0 9.0	9.0	

Remarks: * DA: Depth-Averaged

** Calm: Small or no wave; Moderate: Between calm and rough; Rough : White capped or rougher

Water Quality Monitoring Results at Intake A - Mid-Ebb Tide

Date	Weather Condition	Sea Condition**	Sampling Time	Depth (m)		Water Temperature (°C)		pH		Salinity ppt		DO Saturation (%)		Dissolved Oxygen (mg/L)		Turbidity (NTU)			Suspended Solids (mg/L)			
						Value	Average	Value	Average	Value	Average	Value	Average	Value	Average	DA*	Value	Average	DA*	Value	Average	DA*
3-Aug-09	Rainy	Calm	11:07	Surface	1	27.8 27.9	27.9	8.7 7.9	8.3	33.8 33.7	33.8	91.8 91.7	91.8	6.6 6.5	6.6	7.3	1.9 1.7	1.8	1.8	10.0 10.0	10.0	10.3
				Middle	5	27.8 27.9	27.9	8.3 8.8	8.6	34.0 33.9	34.0	107.6 111.5	109.6	7.6 8.1	7.9		1.1 1.3	1.2		11.0 12.0	11.5	
				Bottom	9	27.7 27.9	27.8	8.0 8.3	8.2	34.1 33.9	34.0	83.9 84.3	84.1	6.3 6.4	6.4		2.4 2.4	2.4		9.0 10.0	9.5	
5-Aug-09	Rainy	Calm	12:07	Surface	1	28.0 28.0	28.0	8.7 8.0	8.4	33.9 33.9	33.9	94.9 94.6	94.8	6.8 6.9	6.9	7.6	1.2 1.2	1.2	1.7	11.0 11.0	11.0	9.0
				Middle	5	27.8 27.9	27.9	8.5 9.0	8.8	34.0 34.0	34.0	110.7 114.3	112.5	7.9 8.5	8.2		1.3 1.4	1.4		10.0 10.0	10.0	
				Bottom	9	27.8 27.9	27.9	8.1 8.2	8.2	34.0 34.0	34.0	76.8 95.3	86.1	5.6 6.9	6.3		2.7 2.2	2.5		6.0 6.0	6.0	
7-Aug-09	Sunny	Calm	13:06	Surface	1	27.9 28.0	28.0	8.3 7.4	7.9	34.0 33.8	33.9	95.0 94.5	94.8	6.8 7.0	6.9	7.2	5.2 4.6	4.9	5.7	4.0 4.0	4.0	4.0
				Middle	5	27.7 27.7	27.7	7.8 8.4	8.1	34.0 33.9	34.0	103.6 107.5	105.6	7.2 7.6	7.4		5.2 6.0	5.6		5.0 5.0	5.0	
				Bottom	9	27.9 27.8	27.9	7.5 7.8	7.7	33.9 34.0	34.0	76.9 95.3	86.1	5.5 6.8	6.2		6.8 6.6	6.7		3.0 3.0	3.0	
10-Aug-09	Cloudy	Calm	14:45	Surface	1	27.8 27.8	27.8	8.5 7.5	8.0	33.8 33.8	33.8	95.0 94.5	94.8	7.0 6.9	7.0	7.6	5.4 4.7	5.1	5.3	10.0 10.0	10.0	8.5
				Middle	5	27.8 27.7	27.8	8.2 8.4	8.3	33.8 33.8	33.8	110.6 114.5	112.6	7.9 8.2	8.1		4.9 5.0	5.0		11.0 10.0	10.5	
				Bottom	9	27.9 27.9	27.9	7.6 7.8	7.7	34.0 34.0	34.0	76.9 95.2	86.1	5.6 7.0	6.3		6.3	5.4 6.1		5.8	5.0 5.0	
12-Aug-09	Fine	Calm	15:46	Surface	1	28.0 28.0	28.0	8.7 8.0	8.4	33.7 33.9	33.8	95.0 94.6	94.8	6.9 7.0	7.0	7.7	1.2 1.3	1.3	1.7	15.0 15.0	15.0	11.3
				Middle	5	27.8 27.9	27.9	8.3 9.1	8.7	34.1 33.9	34.0	110.5 114.5	112.5	8.0 8.5	8.3		1.2 1.4	1.3		13.0 13.0	13.0	
				Bottom	9	27.9 27.9	27.9	8.0 8.3	8.2	33.8 34.0	33.9	94.1 95.3	94.7	6.8 7.0	6.9		2.4 2.5	2.5		6.0 6.0	6.0	
14-Aug-09	Cloudy	Calm	16:28	Surface	1	28.2 28.1	28.2	8.0 7.7	7.9	34.0 34.0	34.0	95.6 95.7	95.7	7.0 7.0	7.0	7.0	2.3 2.3	2.3	2.4	8.0 8.0	8.0	8.0
				Middle	5	27.8 27.8	27.8	8.1 8.2	8.2	34.1 34.2	34.2	96.5 93.2	94.9	7.1 6.9	7.0		2.4 2.5	2.5		8.0 8.0	8.0	
				Bottom	9	28.0 28.0	28.0	7.8 8.0	7.9	34.3 34.4	34.4	93.2 93.1	93.2	6.9 6.9	6.9		2.4 2.4	2.4		8.0 8.0	8.0	
17-Aug-09	Sunny	Calm	09:45	Surface	1	28.0 27.9	28.0	8.8 7.9	8.4	33.7 33.9	33.8	95.0 94.7	94.9	6.8 6.8	6.8	7.5	1.3 1.5	1.4	1.6	7.0 7.0	7.0	8.0
				Middle	5	27.9 27.8	27.9	8.5 9.1	8.8	34.0 34.1	34.1	110.6 114.4	112.5	8.2 8.2	8.2		1.2 1.3	1.3		10.0 10.0	10.0	
				Bottom	9	27.8 27.8	27.8	8.1 8.3	8.2	33.9 33.9	33.9	76.7 95.2	86.0	5.5 6.8	6.2		6.2	2.1 1.8		2.0	7.0 7.0	
19-Aug-09	Sunny	Calm	11:32	Surface	1	28.0 28.0	28.0	7.9 6.9	7.4	33.8 34.0	33.9	95.0 94.7	94.9	6.8 7.0	6.9	7.6	1.7 1.7	1.7	1.8	11.0 11.0	11.0	12.5
				Middle	5	27.7 27.9	27.8	7.5 8.0	7.8	33.9 33.8	33.9	110.6 114.3	112.5	8.1 8.5	8.3		1.3 1.4	1.4		18.0 18.0	18.0	
				Bottom	9	27.8 27.8	27.8	7.1 7.1	7.1	34.0 34.0	34.0	76.9 95.2	86.1	5.4 6.8	6.1		6.1	2.1 2.2		2.2	8.0 9.0	
21-Aug-09	Sunny	Calm	13:05	Surface	1	27.9 27.9	27.9	8.9 7.9	8.4	33.7 33.8	33.8	94.9 94.6	94.8	6.8 6.8	6.8	7.6	1.7 1.6	1.7	1.9	5.0 4.0	4.5	7.3
				Middle	5	27.7 27.8	27.8	8.3 8.8	8.6	34.0 33.8	33.9	110.7 114.5	112.6	8.2 8.5	8.4		1.5 1.6	1.6		12.0 12.0	12.0	
				Bottom	9	27.9 27.7	27.8	8.0 8.3	8.2	33.9 34.0	34.0	76.8 95.2	86.0	5.6 6.9	6.3		6.3	2.2 2.3		2.3	6.0 5.0	

Remarks: * DA: Depth-Averaged

** Calm: Small or no wave; Moderate: Between calm and rough; Rough: White capped or rougher

Water Quality Monitoring Results at Intake A - Mid-Ebb Tide

Date	Weather Condition	Sea Condition**	Sampling Time	Depth (m)		Water Temperature (°C)		pH		Salinity ppt		DO Saturation (%)		Dissolved Oxygen (mg/L)			Turbidity (NTU)			Suspended Solids (mg/L)		
						Value	Average	Value	Average	Value	Average	Value	Average	Value	Average	DA*	Value	Average	DA*	Value	Average	DA*
24-Aug-09	Sunny	Calm	08:46	Surface	1	28.0 28.0	28.0	8.9 7.9	8.4	33.9 33.8	33.9	93.0 92.6	92.8	6.6 6.6	6.6	7.3	1.0 0.9	1.0	1.5	7.0 7.0	7.0	7.8
				Middle	5	27.8 27.7	27.8	8.5 9.1	8.8	33.8 34.0	33.9	108.7 112.5	110.6	7.7 8.1	7.9		1.1 1.1	1.1		9.0 9.0	9.0	
				Bottom	9	27.9 27.8	27.9	7.9 8.2	8.1	33.9 34.0	34.0	94.8 93.3	94.1	6.8 6.8	6.8		2.3 2.5	2.4		7.0 8.0	7.5	
26-Aug-09	Sunny	Calm	11:01	Surface	1	30.4 30.5	30.5	7.5 7.4	7.5	34.2 34.1	34.2	100.8 100.8	100.8	7.1 7.1	7.1	7.1	5.3 5.5	5.4	6.4	7.0 7.0	7.0	7.0
				Middle	5	30.0 30.0	30.0	7.3 7.3	7.3	35.0 35.0	35.0	100.3 100.2	100.3	7.0 7.0	7.0		6.1 6.4	6.3		7.0 7.0	7.0	
				Bottom	9	29.8 29.8	29.8	7.8 7.8	7.8	35.1 35.2	35.2	99.6 99.2	99.4	7.0 7.0	7.0		7.5 7.6	7.6		7.0 7.0	7.0	
28-Aug-09	Sunny	Calm	08:05	Surface	1	27.8 28.0	27.9	9.0 8.1	8.6	33.8 33.9	33.9	95.0 94.6	94.8	6.8 6.9	6.9	7.6	1.2 1.3	1.3	1.5	15.0 14.0	14.5	8.8
				Middle	5	27.7 27.8	27.8	8.4 9.1	8.8	33.9 33.8	33.9	110.6 114.4	112.5	8.1 8.3	8.2		1.4 1.4	1.4		6.0 6.0	6.0	
				Bottom	9	27.7 27.9	27.8	8.1 8.0	8.1	34.0 34.0	34.0	76.7 95.3	86.0	5.4 6.8	6.1		1.7 2.1	1.9		6.0 6.0	6.0	
31-Aug-09	Sunny	Calm	09:55	Surface	1	27.8 27.9	27.9	9.0 8.0	8.5	34.0 33.7	33.9	94.9 94.6	94.8	6.9 6.7	6.8	7.5	2.0 2.1	2.1	1.9	10.0 9.0	9.5	8.5
				Middle	5	27.8 27.8	27.8	8.5 9.1	8.8	33.9 33.8	33.9	110.6 114.4	112.5	8.0 8.3	8.2		1.3 1.3	1.3		9.0 9.0	9.0	
				Bottom	9	27.9 27.8	27.9	8.1 8.2	8.2	33.9 34.0	34.0	76.7 95.1	85.9	5.6 6.8	6.2		2.4 2.4	2.4		7.0 7.0	7.0	

Remarks: * DA: Depth-Averaged

** Calm: Small or no wave; Moderate: Between calm and rough; Rough : White capped or rougher

Water Quality Monitoring Results at Intake A - Mid-Flood Tide

Date	Weather Condition	Sea Condition**	Sampling Time	Depth (m)		Water Temperature (°C)		pH		Salinity ppt		DO Saturation (%)		Dissolved Oxygen (mg/L)		Turbidity(NTU)			Suspended Solids (mg/L)			
						Value	Average	Value	Average	Value	Average	Value	Average	Value	Average	DA*	Value	Average	DA*	Value	Average	DA*
3-Aug-09	Rainy	Calm	17:17	Surface	1	27.8 27.9	27.9	8.6 8.3	8.5	33.9 33.9	33.9	93.2 93.4	93.3	6.8 6.7	6.8	6.7	1.2 1.3	1.3	1.5	13.0 13.0	13.0	9.7
				Middle	5	27.9 27.9	27.9	8.7 8.2	8.5	34.0 34.0	34.0	91.1 91.4	91.3	6.5 6.6	6.6		1.4 1.5	1.5		8.0 8.0	8.0	
				Bottom	9	27.8 27.8	27.8	8.8 8.2	8.5	34.1 33.8	34.0	86.3 87.0	86.7	6.3 6.4	6.4		1.6 1.5	1.6		8.0 8.0	8.0	
5-Aug-09	Rainy	Calm	17:17	Surface	1	28.0 27.9	28.0	8.5 8.2	8.4	33.9 34.0	34.0	93.2 93.4	93.3	6.9 6.7	6.8	6.7	1.2 1.2	1.2	1.5	12.0 12.0	12.0	9.2
				Middle	5	27.7 27.8	27.8	8.8 8.0	8.4	34.0 34.0	34.0	91.2 91.3	91.3	6.5 6.7	6.6		1.6 1.6	1.6		7.0 8.0	7.5	
				Bottom	9	27.9 27.9	27.9	8.6 8.2	8.4	33.8 34.1	34.0	86.2 87.2	86.7	6.4 6.6	6.5		1.8 1.6	1.7		8.0 8.0	8.0	
7-Aug-09	Sunny	Calm	08:17	Surface	1	27.9 28.0	28.0	8.0 7.5	7.8	33.9 33.9	33.9	93.2 93.2	93.2	6.9 6.9	6.9	6.8	4.8 4.2	4.5	5.3	8.0 8.0	8.0	10.8
				Middle	5	27.8 27.9	27.9	8.4 7.5	8.0	34.0 33.8	33.9	91.2 91.4	91.3	6.5 6.7	6.6		5.3 5.4	5.4		19.0 18.0	18.5	
				Bottom	9	27.7 27.7	27.7	8.2 7.8	8.0	33.8 34.0	33.9	88.2 89.2	88.7	6.6 6.6	6.6		5.8 6.2	6.0		6.0 6.0	6.0	
10-Aug-09	Cloudy	Calm	08:39	Surface	1	28.0 27.9	28.0	8.3 7.8	8.1	33.9 33.8	33.9	93.0 93.4	93.2	6.6 6.8	6.7	6.7	2.5 2.2	2.4	4.4	4.0 4.0	4.0	3.8
				Middle	5	27.8 27.7	27.8	8.3 7.8	8.1	33.8 33.9	33.9	91.1 91.2	91.2	6.6 6.6	6.6		5.2 5.7	5.5		3.0 4.0	3.5	
				Bottom	9	27.8 27.7	27.8	8.3 8.0	8.2	34.0 34.0	34.0	86.2 87.2	86.7	6.5 6.4	6.5		5.2 5.3	5.3		4.0 4.0	4.0	
12-Aug-09	Fine	Calm	10:07	Surface	1	27.8 27.8	27.8	8.5 8.3	8.4	34.0 34.0	34.0	93.1 93.4	93.3	6.6 6.6	6.6	6.6	1.9 1.6	1.8	1.6	8.0 8.0	8.0	11.0
				Middle	5	27.8 27.9	27.9	8.7 8.1	8.4	33.9 34.0	34.0	91.1 91.2	91.2	6.6 6.6	6.6		1.2 1.3	1.3		12.0 12.0	12.0	
				Bottom	9	27.8 27.9	27.9	8.9 8.3	8.6	33.9 33.9	33.9	83.2 84.2	83.7	6.1 6.3	6.2		1.6 1.7	1.7		13.0 13.0	13.0	
14-Aug-09	Rainy	Calm	12:27	Surface	1	28.2 28.2	28.2	7.9 7.9	7.9	34.4 34.4	34.4	97.5 97.4	97.5	7.2 7.2	7.2	7.1	2.2 2.2	2.2	2.5	11.0 11.0	11.0	10.8
				Middle	5	28.2 28.2	28.2	7.9 7.8	7.9	34.4 34.4	34.4	94.9 94.2	94.6	7.0 7.0	7.0		2.4 2.5	2.5		11.0 11.0	11.0	
				Bottom	9	28.0 27.8	27.9	7.8 8.1	8.0	34.4 34.3	34.4	94.5 93.6	94.1	7.0 6.9	7.0		2.8 2.8	2.8		10.0 11.0	10.5	
17-Aug-09	Sunny	Calm	17:17	Surface	1	28.0 27.9	28.0	8.5 8.2	8.4	33.9 33.8	33.9	93.0 93.3	93.2	6.7 6.7	6.7	6.7	1.4 1.5	1.5	1.8	9.0 9.0	9.0	8.7
				Middle	5	27.8 27.8	27.8	8.8 8.0	8.4	33.8 33.8	33.8	91.1 91.2	91.2	6.7 6.6	6.7		1.8 2.2	2.0		8.0 8.0	8.0	
				Bottom	9	27.8 27.8	27.8	8.8 8.1	8.5	34.0 33.9	34.0	86.2 87.0	86.6	6.3 6.3	6.3		1.9 2.0	2.0		9.0 9.0	9.0	
19-Aug-09	Fine	Calm	17:18	Surface	1	27.9 28.0	28.0	7.5 7.1	7.3	33.8 33.8	33.8	93.2 93.3	93.3	6.8 6.9	6.9	6.8	1.5 1.5	1.5	1.7	11.0 11.0	11.0	11.3
				Middle	5	27.9 27.8	27.9	7.8 7.1	7.5	34.0 33.9	34.0	91.1 91.4	91.3	6.6 6.5	6.6		1.8 2.0	1.9		13.0 13.0	13.0	
				Bottom	9	27.9 27.8	27.9	7.8 7.2	7.5	33.9 34.0	34.0	83.3 84.1	83.7	6.1 6.2	6.2		1.6 1.8	1.7		10.0 10.0	10.0	
21-Aug-09	Sunny	Calm	08:17	Surface	1	27.8 27.9	27.9	8.6 8.0	8.3	33.8 33.8	33.8	93.2 93.3	93.3	6.9 6.8	6.9	6.8	0.8 0.8	0.8	1.2	9.0 9.0	9.0	6.8
				Middle	5	27.8 27.7	27.8	8.8 8.1	8.5	34.0 34.0	34.0	91.0 91.3	91.2	6.7 6.6	6.7		0.7 0.7	0.7		5.0 6.0	5.5	
				Bottom	9	27.8 27.7	27.8	8.7 8.2	8.5	33.9 34.0	34.0	88.2 89.1	88.7	6.5 6.5	6.5		2.1 2.1	2.1		6.0 6.0	6.0	

Remarks: * DA: Depth-Averaged

** Calm: Small or no wave; Moderate: Between calm and rough; Rough : White capped or rougher

Water Quality Monitoring Results at Intake A - Mid-Flood Tide

Date	Weather Condition	Sea Condition**	Sampling Time	Depth (m)		Water Temperature (°C)		pH		Salinity ppt		DO Saturation (%)		Dissolved Oxygen (mg/L)			Turbidity(NTU)			Suspended Solids (mg/L)		
						Value	Average	Value	Average	Value	Average	Value	Average	Value	Average	DA*	Value	Average	DA*	Value	Average	DA*
24-Aug-09	Sunny	Calm	15:15	Surface	1	27.8 28.0	27.9	8.5 8.2	8.4	33.9 33.8	33.9	91.0 91.2	91.1	6.5 6.4	6.5	6.5	1.3 1.3	1.3	1.8	12.0 11.0	11.5	9.2
				Middle	5	27.9 27.8	27.9	8.9 7.9	8.4	33.9 34.0	34.0	89.2 89.4	89.3	6.5 6.5	6.5		1.7 1.7	1.7		8.0 8.0	8.0	
				Bottom	9	27.9 27.8	27.9	8.7 8.1	8.4	33.9 33.9	33.9	85.0 85.8	85.4	6.3 6.4	6.4		6.4	2.4 2.5		2.5	8.0 8.0	
26-Aug-09	Sunny	Calm	16:00	Surface	1	30.4 30.4	30.4	7.3 7.3	7.3	34.3 34.4	34.4	102.8 102.4	102.6	7.2 7.2	7.2	7.2	5.6 5.6	5.6	6.2	13.0 13.0	13.0	9.2
				Middle	5	30.2 30.1	30.2	8.0 7.7	7.9	34.9 34.8	34.9	101.8 101.4	101.6	7.1 7.1	7.1		6.2 6.1	6.2		8.0 8.0	8.0	
				Bottom	9	29.9 30.0	30.0	7.7 7.6	7.7	35.1 35.1	35.1	99.1 99.0	99.1	7.0 6.9	7.0		7.0	6.7 6.7		6.7	6.0 7.0	
31-Aug-09	Cloudy	Calm	17:17	Surface	1	27.8 28.0	27.9	8.5 8.1	8.3	33.8 33.8	33.8	93.1 93.4	93.3	6.9 6.9	6.9	6.7	1.5 1.5	1.5	1.7	8.0 8.0	8.0	13.0
				Middle	5	27.8 27.9	27.9	8.7 8.1	8.4	33.9 33.8	33.9	91.1 91.3	91.2	6.5 6.5	6.5		1.6 1.5	1.6		16.0 16.0	16.0	
				Bottom	9	27.9 27.9	27.9	8.8 8.3	8.6	33.8 33.9	33.9	87.2 88.0	87.6	6.5 6.6	6.6		6.6	1.7 2.1		1.9	15.0 15.0	

Remarks: * DA: Depth-Averaged

** Calm: Small or no wave; Moderate: Between calm and rough; Rough : White capped or rougher

Water Quality Monitoring Results at Intake B - Mid-Ebb Tide

Date	Weather Condition	Sea Condition**	Sampling Time	Depth (m)		Water Temperature (°C)		pH		Salinity ppt		DO Saturation (%)		Dissolved Oxygen (mg/L)		Turbidity (NTU)			Suspended Solids (mg/L)			
						Value	Average	Value	Average	Value	Average	Value	Average	Value	Average	DA*	Value	Average	DA*	Value	Average	DA*
3-Aug-09	Rainy	Calm	11:44	Surface	1	27.9 27.9	27.9	8.0 8.0	8.0	34.0 33.9	34.0	97.1 97.1	97.1	7.1 6.8	7.0	7.0	2.0 1.9	2.0	1.8	10.0 11.0	10.5	10.5
				Middle	6	27.8 27.8	27.8	7.9 7.9	7.9	34.2 34.1	34.2	97.5 97.1	97.3	6.9 7.0	7.0		1.4 1.4	1.4		10.0 10.0		
				Bottom	11	27.9 27.7	27.8	7.9 8.0	8.0	33.9 34.1	34.0	101.9 102.0	102.0	7.4 7.2	7.3		1.8 2.0	1.9		11.0 11.0		
5-Aug-09	Rainy	Calm	12:44	Surface	1	27.7 27.8	27.8	7.9 8.1	8.0	34.0 34.1	34.1	100.3 100.0	100.2	7.4 7.3	7.4	7.4	1.1 1.2	1.2	1.7	6.0 6.0	7.2	7.2
				Middle	6	27.8 27.7	27.8	7.7 8.0	7.9	34.0 33.9	34.0	100.4 100.1	100.3	7.2 7.3	7.3		1.6 1.7	1.7		6.0 7.0		
				Bottom	11	27.8 27.8	27.8	7.8 8.1	8.0	33.9 33.9	33.9	104.8 104.9	104.9	7.5 7.5	7.5		2.0 2.1	2.1		9.0 9.0		
7-Aug-09	Sunny	Calm	13:42	Surface	1	27.7 27.7	27.7	7.6 7.5	7.6	34.0 33.9	34.0	100.3 100.0	100.2	7.1 7.1	7.1	7.3	5.9 5.8	5.9	6.1	6.0 5.0	4.5	4.5
				Middle	6	27.7 27.9	27.8	7.2 7.6	7.4	34.2 34.1	34.2	100.4 100.0	100.2	7.4 7.4	7.4		5.9 5.6	5.8		4.0 4.0		
				Bottom	11	27.9 27.7	27.8	7.3 7.5	7.4	33.9 34.2	34.1	104.8 104.9	104.9	7.5 7.5	7.5		6.8 6.2	6.5		4.0 4.0		
10-Aug-09	Cloudy	Calm	15:22	Surface	1	27.8 27.8	27.8	7.7 7.5	7.6	34.1 34.0	34.1	100.1 100.0	100.1	7.4 7.1	7.3	7.4	5.6 5.6	5.6	4.9	4.0 4.0	7.3	7.3
				Middle	6	27.8 27.9	27.9	7.4 7.6	7.5	33.9 33.9	33.9	100.6 100.1	100.4	7.4 7.4	7.4		4.8 4.9	4.9		7.0 7.0		
				Bottom	11	27.7 27.8	27.8	7.6 7.7	7.7	34.0 34.1	34.1	104.9 104.8	104.9	7.7 7.8	7.8		4.2 4.3	4.3		11.0 11.0		
12-Aug-09	Fine	Calm	16:22	Surface	1	27.7 27.8	27.8	8.0 7.9	8.0	34.0 33.9	34.0	100.1 100.1	100.1	7.4 7.1	7.3	7.3	1.6 1.5	1.6	2.2	6.0 7.0	9.8	9.8
				Middle	6	27.9 27.9	27.9	7.6 8.1	7.9	34.0 33.9	34.0	100.5 100.2	100.4	7.4 7.2	7.3		2.2 2.4	2.3		11.0 11.0		
				Bottom	11	27.8 27.7	27.8	7.8 8.0	7.9	34.0 34.2	34.1	104.8 105.0	104.9	7.5 7.7	7.6		2.6 2.6	2.6		12.0 12.0		
14-Aug-09	Cloudy	Calm	17:14	Surface	1	28.3 28.3	28.3	8.0 7.7	7.9	34.4 34.4	34.4	90.0 90.0	90.0	6.6 6.6	6.6	6.6	1.9 2.0	2.0	2.3	11.0 11.0	8.2	8.2
				Middle	6	27.8 27.8	27.8	8.2 8.2	8.2	34.4 34.4	34.4	88.0 88.0	88.0	6.5 6.5	6.5		2.2 2.2	2.2		7.0 7.0		
				Bottom	11	27.7 27.6	27.7	7.9 8.0	8.0	34.4 34.4	34.4	87.3 87.3	87.3	6.5 6.5	6.5		2.7 2.9	2.8		6.0 7.0		
17-Aug-09	Sunny	Calm	10:22	Surface	1	27.7 27.8	27.8	8.0 8.0	8.0	34.1 34.0	34.1	100.3 100.0	100.2	7.4 7.3	7.4	7.4	1.5 1.5	1.5	1.8	9.0 9.0	9.3	9.3
				Middle	6	27.8 27.7	27.8	7.8 8.1	8.0	33.9 33.9	33.9	100.5 100.0	100.3	7.4 7.3	7.4		1.5 1.5	1.5		11.0 11.0		
				Bottom	11	27.8 27.8	27.8	7.8 8.0	7.9	33.9 34.0	34.0	104.7 105.0	104.9	7.5 7.5	7.5		2.3 2.3	2.3		8.0 8.0		
19-Aug-09	Sunny	Calm	12:08	Surface	1	27.8 27.7	27.8	6.9 7.0	7.0	33.9 34.2	34.1	100.1 100.0	100.1	7.4 7.4	7.4	7.3	1.7 1.6	1.7	1.8	11.0 11.0	12.0	12.0
				Middle	6	27.9 27.8	27.9	6.7 7.1	6.9	34.1 34.1	34.1	100.6 100.1	100.4	7.2 7.2	7.2		1.9 1.9	1.9		10.0 10.0		
				Bottom	11	27.8 27.9	27.9	6.8 6.9	6.9	34.1 34.1	34.1	104.7 105.0	104.9	7.7 7.5	7.6		1.7 1.9	1.8		15.0 15.0		
21-Aug-09	Sunny	Calm	13:41	Surface	1	27.8 27.9	27.9	8.0 8.1	8.1	34.1 33.9	34.0	100.2 99.9	100.1	7.3 7.4	7.4	7.4	1.6 1.7	1.7	1.9	5.0 5.0	4.8	4.8
				Middle	6	27.9 27.8	27.9	7.7 8.0	7.9	34.1 33.9	34.0	100.5 100.1	100.3	7.4 7.3	7.4		1.7 1.7	1.7		3.0 4.0		
				Bottom	11	27.8 27.8	27.8	8.0 8.1	8.1	34.1 34.2	34.2	104.7 104.9	104.8	7.6 7.6	7.6		2.2 2.3	2.3		6.0 6.0		

Remarks: * DA: Depth-Averaged

** Calm: Small or no wave; Moderate: Between calm and rough; Rough: White capped or rougher

Water Quality Monitoring Results at Intake B - Mid-Ebb Tide

Date	Weather Condition	Sea Condition**	Sampling Time	Depth (m)		Water Temperature (°C)		pH		Salinity ppt		DO Saturation (%)		Dissolved Oxygen (mg/L)			Turbidity (NTU)			Suspended Solids (mg/L)		
						Value	Average	Value	Average	Value	Average	Value	Average	Value	Average	DA*	Value	Average	DA*	Value	Average	DA*
24-Aug-09	Sunny	Calm	09:23	Surface	1	27.9 27.9	27.9	7.9 8.0	8.0	34.1 34.1	34.1	98.2 98.0	98.1	7.1 7.2	7.2	7.2	1.7 1.6	1.7	1.7	7.0 7.0	7.0	8.2
				Middle	6	27.9 27.8	27.9	7.7 8.2	8.0	34.0 33.9	34.0	98.6 98.1	98.4	7.0 7.1	7.1	7.1	1.5 1.5	1.5		11.0 11.0	11.0	
				Bottom	11	27.9 27.9	27.9	7.9 8.0	8.0	34.2 34.0	34.1	102.7 103.0	102.9	7.4 7.5	7.5	7.5	1.7 1.9	1.8		7.0 6.0	6.5	
26-Aug-09	Sunny	Calm	11:29	Surface	1	30.4 30.4	30.4	7.3 7.9	7.6	35.0 35.1	35.1	101.7 100.8	101.3	7.1 7.0	7.1	7.0	5.3 5.9	5.6	6.2	12.0 11.0	11.5	9.5
				Middle	6	29.9 29.9	29.9	7.9 8.1	8.0	35.5 35.5	35.5	98.3 98.3	98.3	6.9 6.9	6.9	6.9	6.5 6.5	6.5		9.0 9.0	9.0	
				Bottom	11	29.9 29.9	29.9	7.7 8.1	7.9	35.6 35.6	35.6	97.0 97.2	97.1	6.8 6.8	6.8	6.8	6.6 6.5	6.6		8.0 8.0	8.0	
28-Aug-09	Sunny	Calm	08:42	Surface	1	27.9 27.7	27.8	7.9 7.9	7.9	33.9 34.1	34.0	100.3 100.1	100.2	7.4 7.4	7.4	7.4	1.5 1.6	1.6	2.0	8.0 8.0	8.0	10.5
				Middle	6	27.8 27.7	27.8	7.7 8.0	7.9	34.1 34.0	34.1	100.5 100.1	100.3	7.3 7.2	7.3	7.3	2.0 2.0	2.0		5.0 6.0	5.5	
				Bottom	11	27.8 27.8	27.8	8.1 8.1	8.1	34.2 33.9	34.1	104.7 105.0	104.9	7.6 7.5	7.6	7.6	2.4 2.2	2.3		18.0 18.0	18.0	
31-Aug-09	Sunny	Calm	10:32	Surface	1	27.8 27.7	27.8	7.9 8.0	8.0	33.9 34.2	34.1	100.1 99.9	100.0	7.2 7.2	7.2	7.2	1.7 1.8	1.8	2.1	6.0 6.0	6.0	8.8
				Middle	6	27.8 27.8	27.8	7.7 8.2	8.0	34.1 34.1	34.1	100.5 100.1	100.3	7.2 7.4	7.3	7.3	1.9 2.1	2.0		10.0 10.0	10.0	
				Bottom	11	27.8 27.7	27.8	8.0 8.0	8.0	33.9 34.0	34.0	104.7 104.9	104.8	7.6 7.5	7.6	7.6	2.3 2.4	2.4		11.0 10.0	10.5	

Remarks: * DA: Depth-Averaged

** Calm: Small or no wave; Moderate: Between calm and rough; Rough : White capped or rougher

Water Quality Monitoring Results at Intake B - Mid-Flood Tide

Date	Weather Condition	Sea Condition**	Sampling Time	Depth (m)		Water Temperature (°C)		pH		Salinity ppt		DO Saturation (%)		Dissolved Oxygen (mg/L)		Turbidity(NTU)			Suspended Solids (mg/L)			
						Value	Average	Value	Average	Value	Average	Value	Average	Value	Average	DA*	Value	Average	DA*	Value	Average	DA*
3-Aug-09	Rainy	Calm	17:54	Surface	1	28.0 27.9	28.0	7.8 8.2	8.0	34.1 34.1	34.1	95.1 95.5	95.3	6.8 7.0	6.9	6.9	2.0 2.0	2.0	2.0	7.0 8.0	7.5	8.5
				Middle	6	27.8 27.8	27.8	8.6 7.9	8.3	34.1 33.9	34.0	94.2 96.2	95.2	6.8 7.0	6.9		1.4 1.4	1.4		8.0 8.0	8.0	
				Bottom	11	27.9 27.7	27.8	8.1 8.9	8.5	33.9 34.1	34.0	101.7 101.5	101.6	7.3 7.4	7.4		2.7 2.6	2.7		10.0 10.0	10.0	
5-Aug-09	Rainy	Calm	17:54	Surface	1	27.8 27.9	27.9	8.0 8.1	8.1	33.9 33.9	33.9	98.2 98.7	98.5	7.0 7.1	7.1	7.1	1.9 2.0	2.0	2.2	7.0 8.0	7.5	7.5
				Middle	6	27.9 27.9	27.9	8.4 8.0	8.2	34.0 34.1	34.1	97.4 99.0	98.2	6.9 7.1	7.0		1.8 1.9	1.9		8.0 8.0	8.0	
				Bottom	11	27.7 27.7	27.7	8.0 8.9	8.5	34.0 33.9	34.0	104.7 104.4	104.6	7.5 7.5	7.5		2.6 2.6	2.6		7.0 7.0	7.0	
7-Aug-09	Sunny	Calm	08:53	Surface	1	27.9 28.0	28.0	7.4 7.5	7.5	34.0 33.9	34.0	98.1 98.7	98.4	7.1 7.2	7.2	7.2	5.0 5.7	5.4	5.5	4.0 5.0	4.5	5.2
				Middle	6	27.8 27.8	27.8	7.9 7.6	7.8	34.0 33.9	34.0	97.3 99.2	98.3	7.2 7.1	7.2		4.7 5.1	4.9		4.0 4.0	4.0	
				Bottom	11	27.8 27.9	27.9	7.3 8.5	7.9	34.2 34.0	34.1	104.5 104.5	104.5	7.5 7.0	7.6		6.5 5.7	6.1		7.0 7.0	7.0	
10-Aug-09	Cloudy	Calm	09:15	Surface	1	28.0 27.8	27.9	7.6 7.6	7.6	34.0 34.0	34.0	98.1 98.7	98.4	7.0 7.2	7.1	7.2	4.5 4.8	4.7	5.2	3.0 3.0	3.0	4.0
				Middle	6	27.8 27.8	27.8	8.2 7.7	8.0	34.0 33.9	34.0	97.4 99.0	98.2	7.2 7.1	7.2		6.2 6.2	6.2		4.0 4.0	4.0	
				Bottom	11	27.7 27.9	27.8	7.7 8.5	8.1	34.0 34.0	34.0	104.5 104.4	104.5	7.6 7.5	7.6		4.8 4.8	4.8		5.0 5.0	5.0	
12-Aug-09	Fine	Calm	10:44	Surface	1	27.8 27.8	27.8	7.9 8.1	8.0	33.9 34.1	34.0	98.1 98.7	98.4	7.0 7.2	7.1	7.2	1.8 1.9	1.9	2.2	9.0 9.0	9.0	8.5
				Middle	6	27.7 27.9	27.8	8.4 8.1	8.3	34.0 33.9	34.0	97.2 99.1	98.2	7.1 7.2	7.2		2.4 2.2	2.3		9.0 9.0	9.0	
				Bottom	11	27.8 27.8	27.8	7.8 9.0	8.4	34.1 34.1	34.1	104.5 104.4	104.5	7.6 7.6	7.6		2.5 2.3	2.4		7.0 8.0	7.5	
14-Aug-09	Rainy	Calm	13:22	Surface	1	28.4 28.4	28.4	8.1 8.0	8.1	34.3 34.3	34.3	103.8 103.3	103.6	7.6 7.6	7.6	7.6	2.2 2.3	2.3	2.8	8.0 8.0	8.0	8.5
				Middle	6	27.9 27.9	27.9	8.0 7.9	8.0	34.3 34.3	34.3	101.3 101.1	101.2	7.5 7.5	7.5		2.8 2.9	2.9		7.0 8.0	7.5	
				Bottom	11	27.7 27.7	27.7	7.8 8.0	7.9	34.2 34.3	34.3	99.6 99.6	99.6	7.4 7.4	7.4		3.1 3.1	3.1		10.0 10.0	10.0	
17-Aug-09	Sunny	Calm	17:54	Surface	1	27.8 27.9	27.9	8.0 8.2	8.1	34.2 34.0	34.1	98.0 98.6	98.3	7.1 7.2	7.2	7.2	1.4 1.6	1.5	2.0	9.0 9.0	9.0	8.7
				Middle	6	27.9 27.8	27.9	8.5 8.1	8.3	34.0 34.0	34.0	97.3 99.2	98.3	7.1 7.1	7.1		1.9 2.0	2.0		6.0 7.0	6.5	
				Bottom	11	27.9 27.8	27.9	7.9 8.9	8.4	34.0 34.0	34.0	104.7 104.6	104.7	7.6 7.6	7.6		2.4 2.3	2.4		11.0 10.0	10.5	
19-Aug-09	Fine	Calm	17:54	Surface	1	27.9 28.0	28.0	7.0 7.0	7.0	34.1 34.0	34.1	98.2 98.6	98.4	7.2 7.3	7.3	7.3	2.1 2.0	2.1	2.1	11.0 11.0	11.0	11.0
				Middle	6	27.8 27.9	27.9	7.4 6.9	7.2	34.2 34.1	34.2	97.4 99.1	98.3	7.0 7.3	7.2		2.3 1.9	2.1		8.0 9.0	8.5	
				Bottom	11	27.7 27.8	27.8	6.9 7.8	7.4	34.0 34.0	34.0	104.6 104.5	104.6	7.7 7.7	7.7		1.9 2.2	2.1		14.0 13.0	13.5	
21-Aug-09	Sunny	Calm	08:53	Surface	1	27.9 27.9	27.9	7.8 8.1	8.0	34.1 34.1	34.1	98.1 98.7	98.4	7.0 7.3	7.2	7.2	1.7 1.7	1.7	1.9	6.0 6.0	6.0	7.0
				Middle	6	27.8 27.7	27.8	8.6 7.9	8.3	34.0 34.1	34.1	97.3 99.0	98.2	7.2 7.1	7.2		1.8 1.7	1.8		10.0 9.0	9.5	
				Bottom	11	27.9 27.8	27.9	8.1 9.0	8.6	34.0 34.2	34.1	104.5 104.4	104.5	7.5 7.6	7.6		2.0 2.1	2.1		5.0 6.0	5.5	

Remarks: * DA: Depth-Averaged

** Calm: Small or no wave; Moderate: Between calm and rough; Rough : White capped or rougher

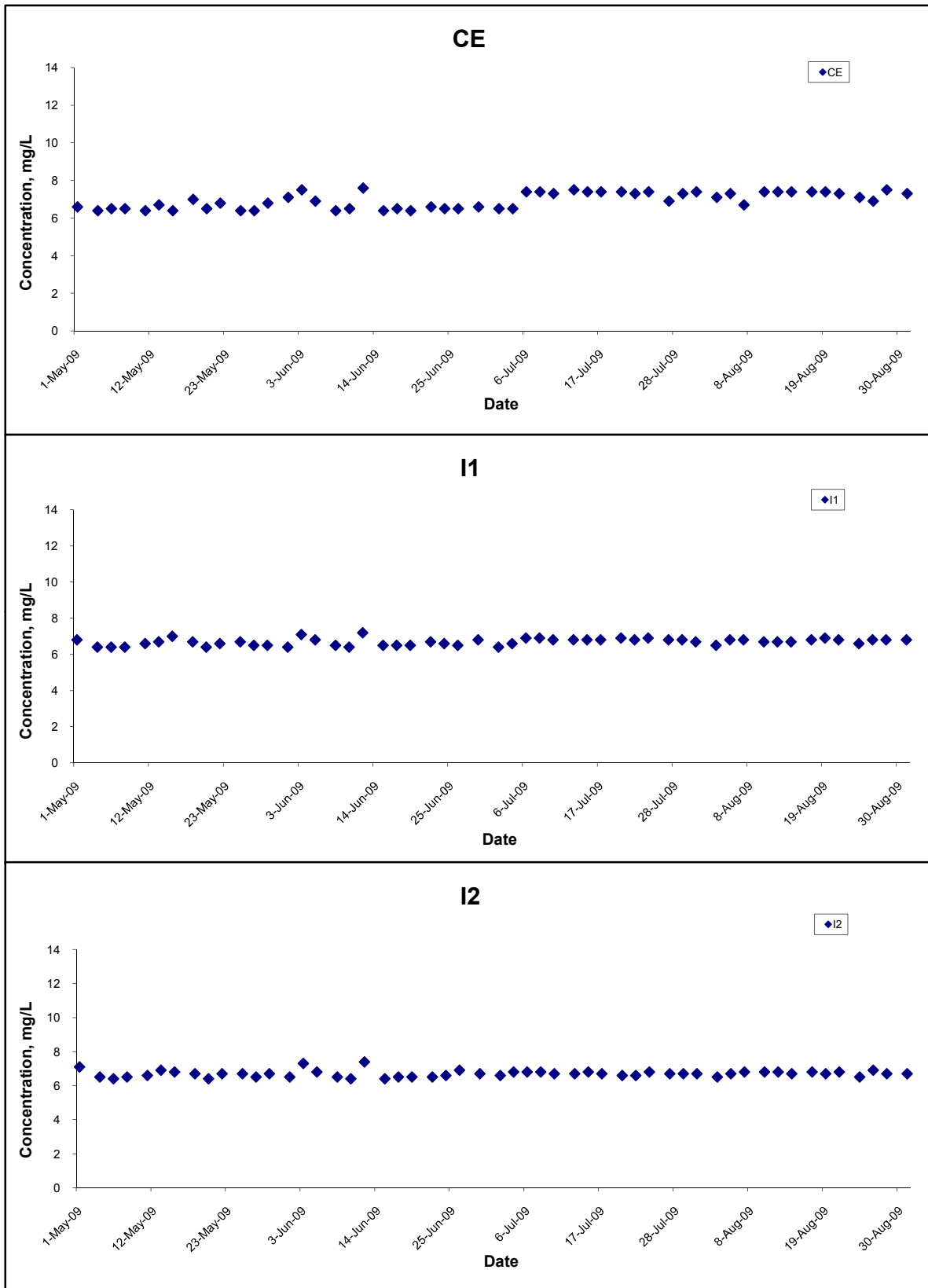
Water Quality Monitoring Results at Intake B - Mid-Flood Tide

Date	Weather Condition	Sea Condition**	Sampling Time	Depth (m)		Water Temperature (°C)		pH		Salinity ppt		DO Saturation (%)		Dissolved Oxygen (mg/L)			Turbidity(NTU)			Suspended Solids (mg/L)		
						Value	Average	Value	Average	Value	Average	Value	Average	Value	Average	DA*	Value	Average	DA*	Value	Average	DA*
24-Aug-09	Sunny	Calm	15:51	Surface	1	27.9 28.0	28.0	8.0 8.0	8.0	34.0 34.1	34.1	96.2 96.5	96.4	7.0 7.1	7.1	7.0	1.2 1.2	1.2	1.9	11.0 10.0	10.5	8.3
				Middle	6	27.8 27.9	27.9	8.6 7.9	8.3	34.2 34.1	34.2	95.3 97.1	96.2	6.7 6.9	6.8		1.8 1.8	1.8		6.0 7.0	6.5	
				Bottom	11	27.9 27.9	27.9	8.1 8.8	8.5	33.9 34.0	34.0	102.7 102.5	102.6	7.3 7.3	7.3		7.3	2.5 2.6		2.6	8.0 8.0	
26-Aug-09	Sunny	Calm	16:27	Surface	1	30.4 30.3	30.4	7.4 7.3	7.4	34.4 34.4	34.4	102.4 102.3	102.4	7.2 7.2	7.2	7.1	5.4 5.4	5.4	6.2	19.0 19.0	19.0	9.8
				Middle	6	30.0 30.0	30.0	7.3 7.9	7.6	35.6 35.6	35.6	100.6 100.6	100.6	7.0 7.0	7.0		6.6 6.9	6.8		5.0 5.0	5.0	
				Bottom	11	29.8 29.8	29.8	7.6 8.0	7.8	35.8 35.8	35.8	99.4 98.8	99.1	7.0 6.9	7.0		7.0	6.2 6.3		6.3	5.0 6.0	
31-Aug-09	Cloudy	Calm	17:54	Surface	1	27.9 28.0	28.0	8.0 8.0	8.0	33.9 34.1	34.0	98.1 98.6	98.4	7.2 7.0	7.1	7.2	2.0 1.6	1.8	2.1	7.0 8.0	7.5	8.5
				Middle	6	27.7 27.8	27.8	8.5 8.1	8.3	34.0 34.1	34.1	97.4 99.1	98.3	7.1 7.2	7.2		1.7 1.7	1.7		11.0 11.0	11.0	
				Bottom	11	27.8 27.7	27.8	8.0 8.8	8.4	34.1 33.9	34.0	104.5 104.5	104.5	7.5 7.5	7.5		7.5	2.5 3.1		2.8	7.0 7.0	

Remarks: * DA: Depth-Averaged

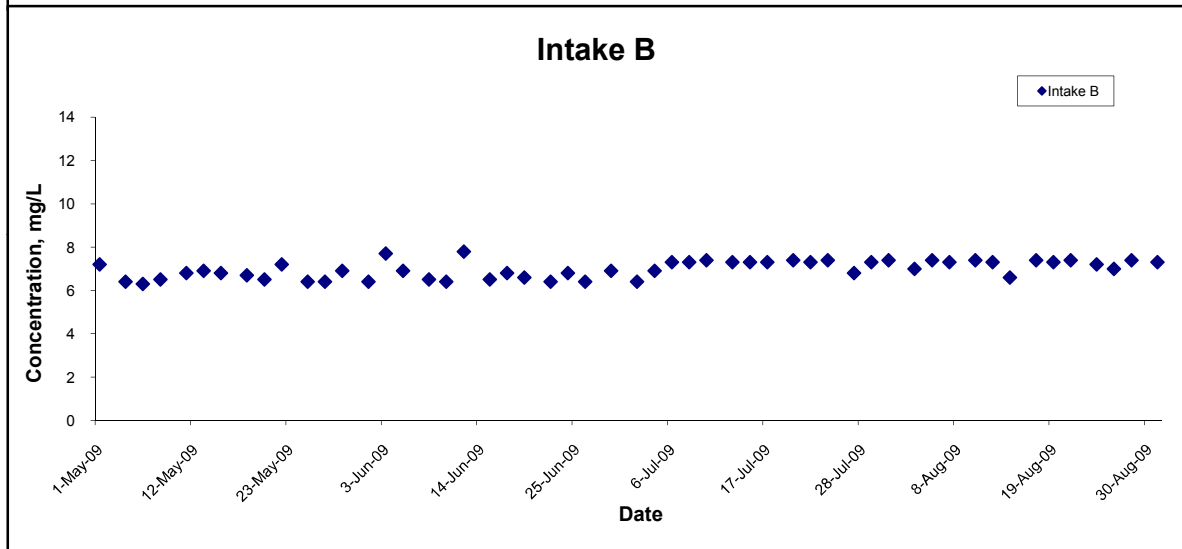
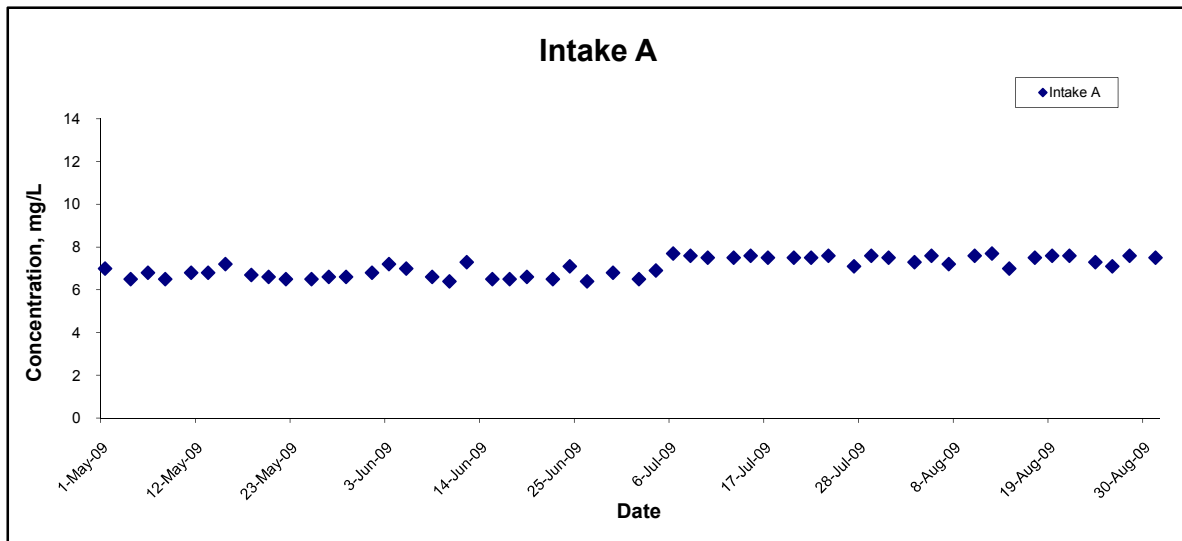
** Calm: Small or no wave; Moderate: Between calm and rough; Rough : White capped or rougher

Dissolved Oxygen (Surface & Middle) at Mid-Ebb Tide



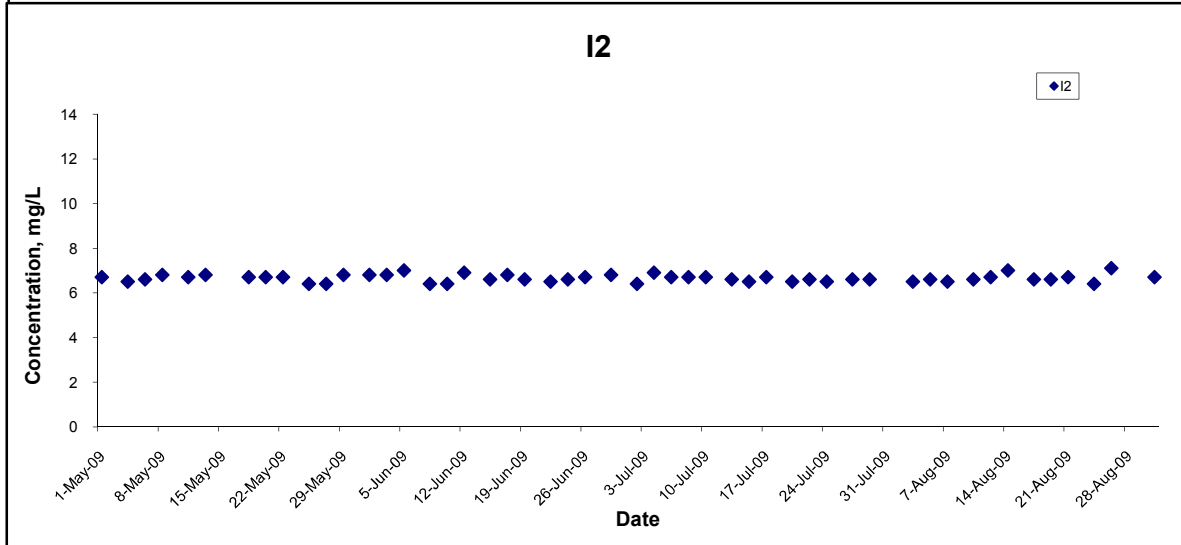
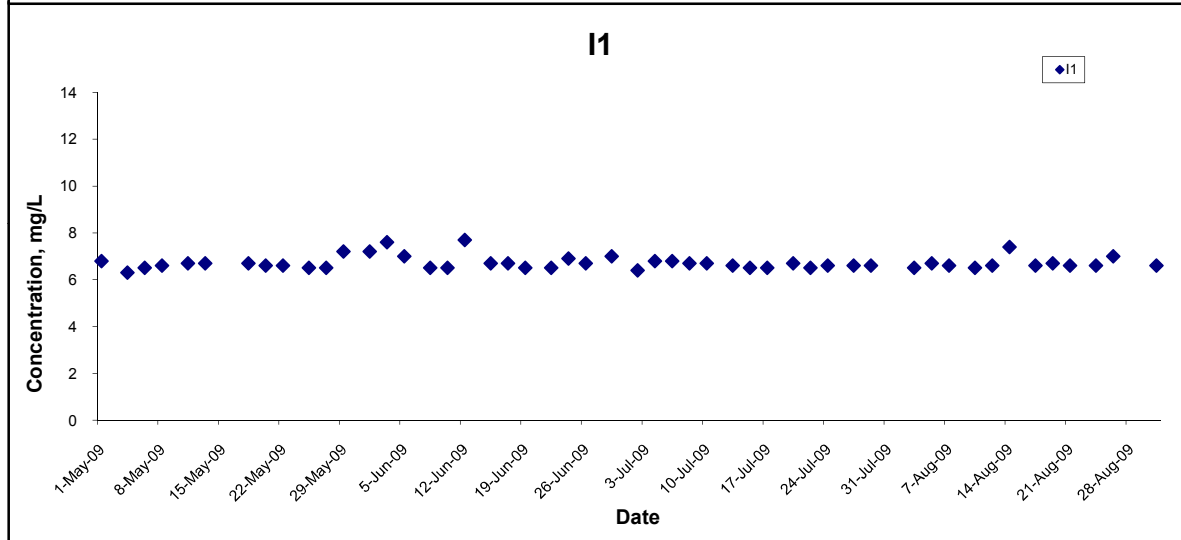
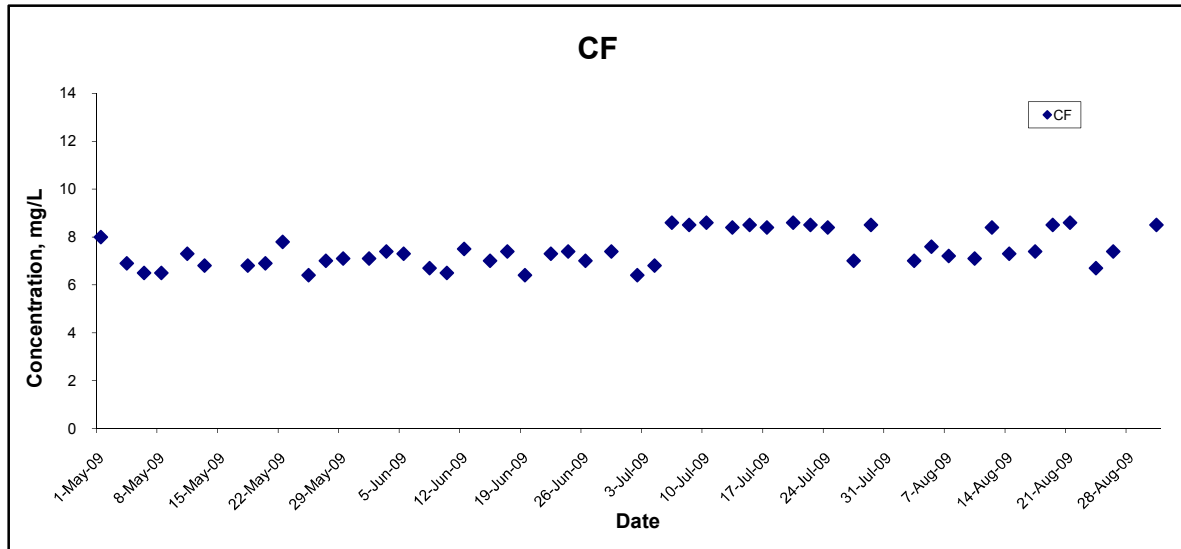
Title Contract No. DC/2007/10 Design and Construction of Hong Kong West Drainage Tunnel Graphical Presentation of Water Quality Monitoring Results	Scale N.T.S	Project No. MA8001	
	Date Aug 09	Appendix H	

Dissolved Oxygen (Surface & Middle) at Mid-Ebb Tide



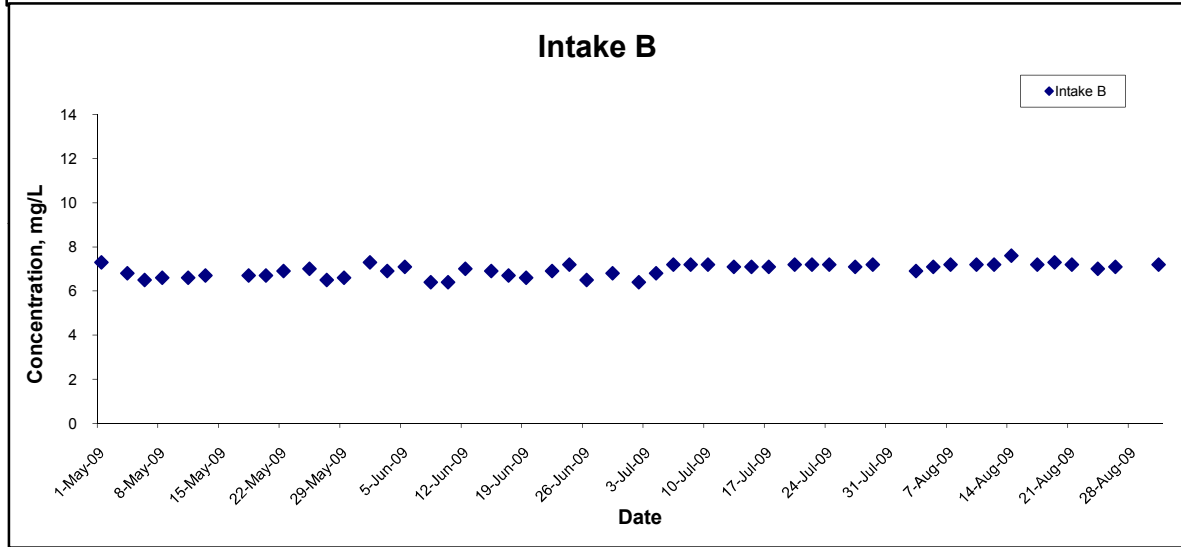
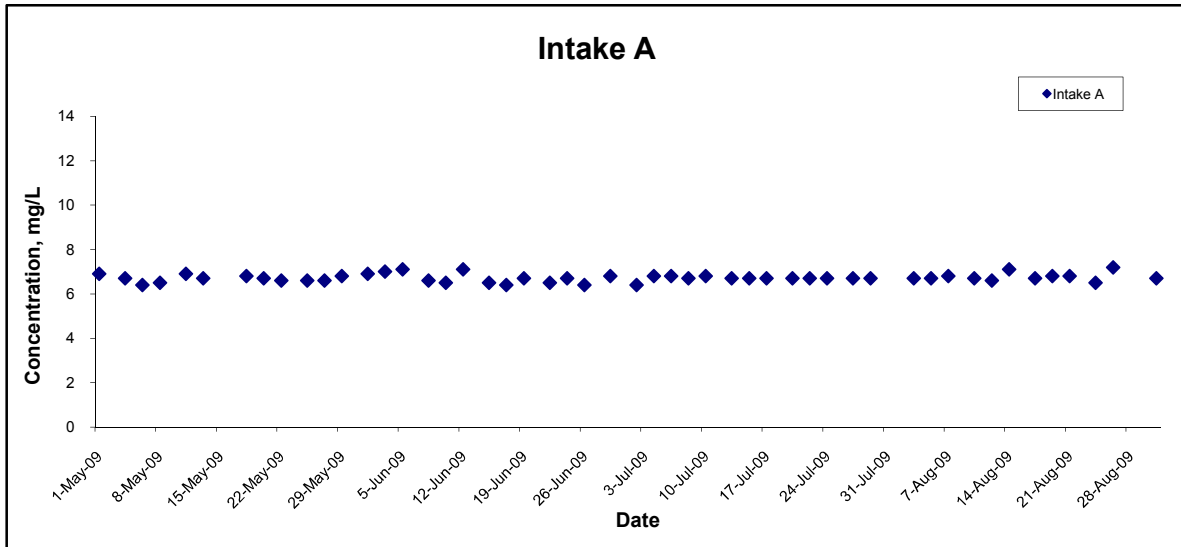
Title Contract No. DC/2007/10 Design and Construction of Hong Kong West Drainage Tunnel Graphical Presentation of Water Quality Monitoring Results	Scale N.T.S	Project No. MA8001	CINOTECH
	Date Aug 09	Appendix H	

Dissolved Oxygen (Surface & Middle) at Mid-Flood Tide



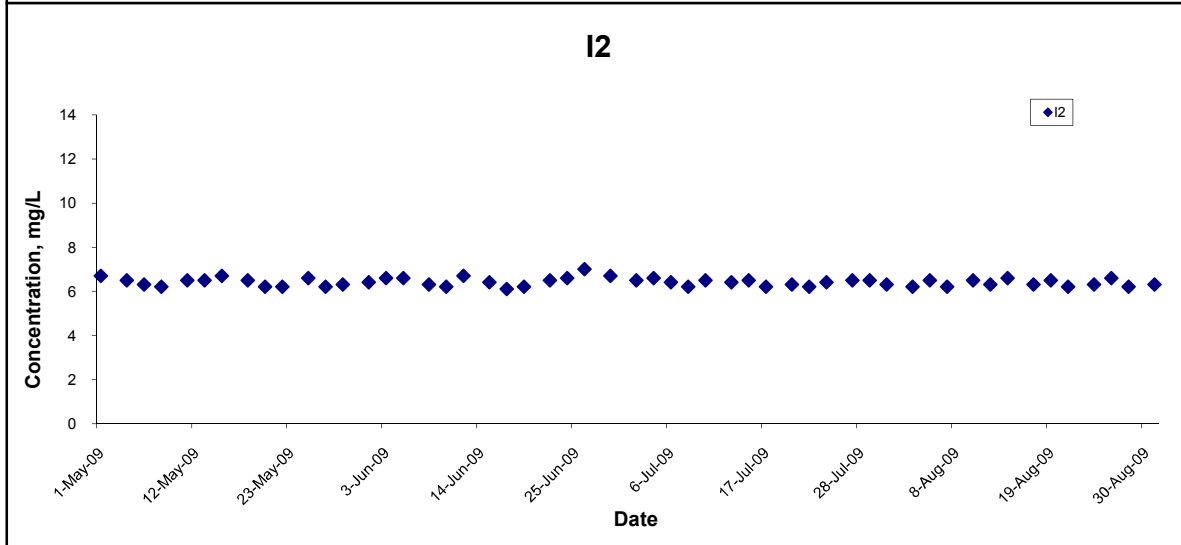
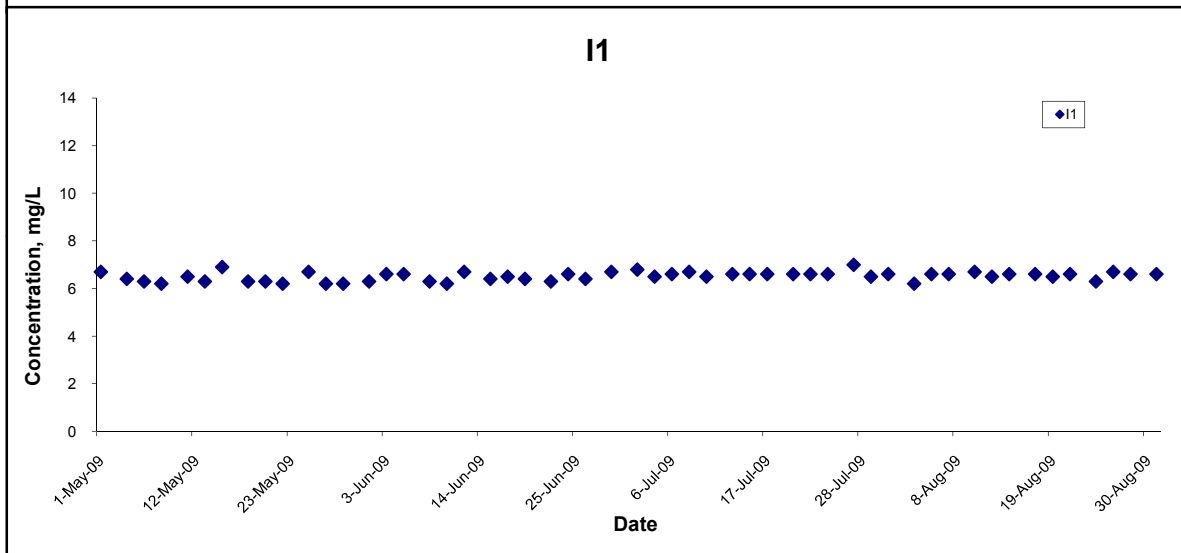
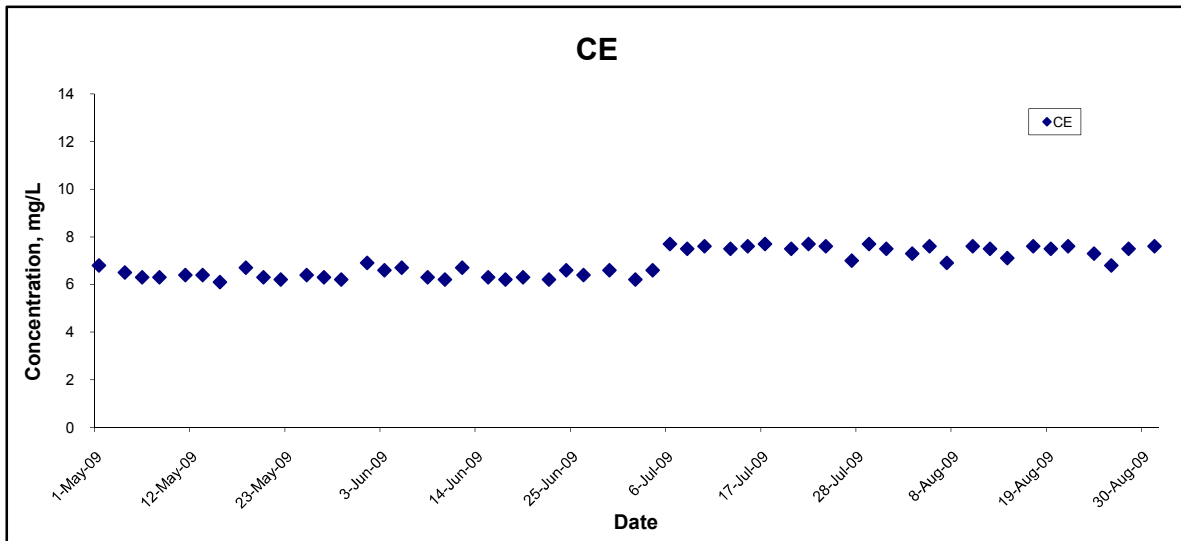
Title Contract No. DC/2007/10 Design and Construction of Hong Kong West Drainage Tunnel Graphical Presentation of Water Quality Monitoring Results	Scale	N.T.S	Project No. MA8001	
	Date	Aug 09	Appendix	

Dissolved Oxygen (Surface & Middle) at Mid-Flood Tide



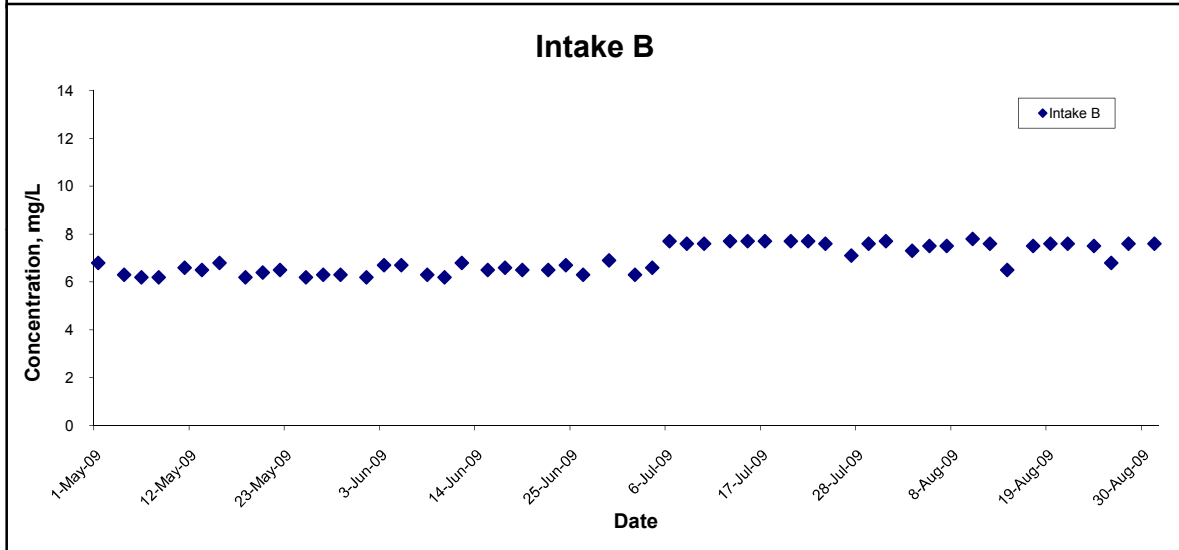
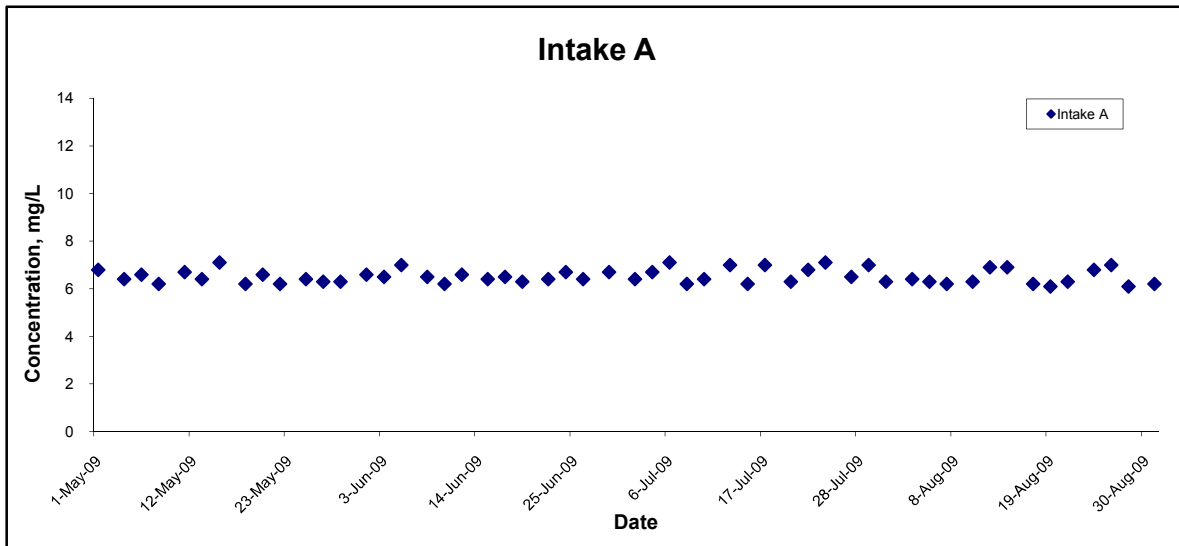
Title Contract No. DC/2007/10 Design and Construction of Hong Kong West Drainage Tunnel Graphical Presentation of Water Quality Monitoring Results	Scale N.T.S	Project No. MA8001	
	Date Aug 09	Appendix H	

Dissolved Oxygen (Bottom) at Mid-Ebb Tide



Title Contract No. DC/2007/10 Design and Construction of Hong Kong West Drainage Tunnel Graphical Presentation of Water Quality Monitoring Results	Scale N.T.S	Project No. MA8001	CINOTECH
	Date Aug 09	Appendix H	

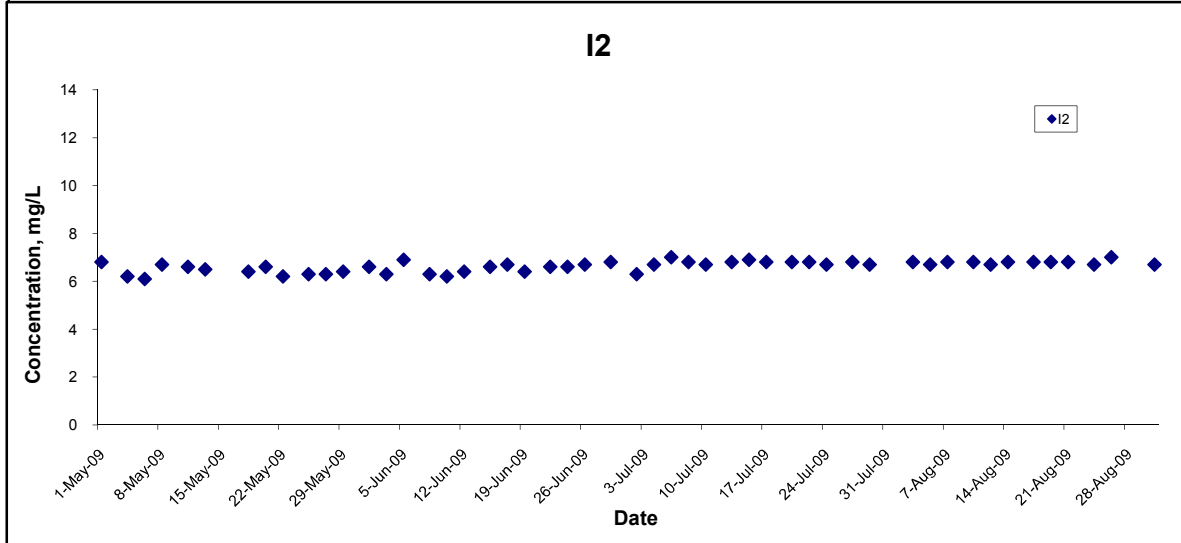
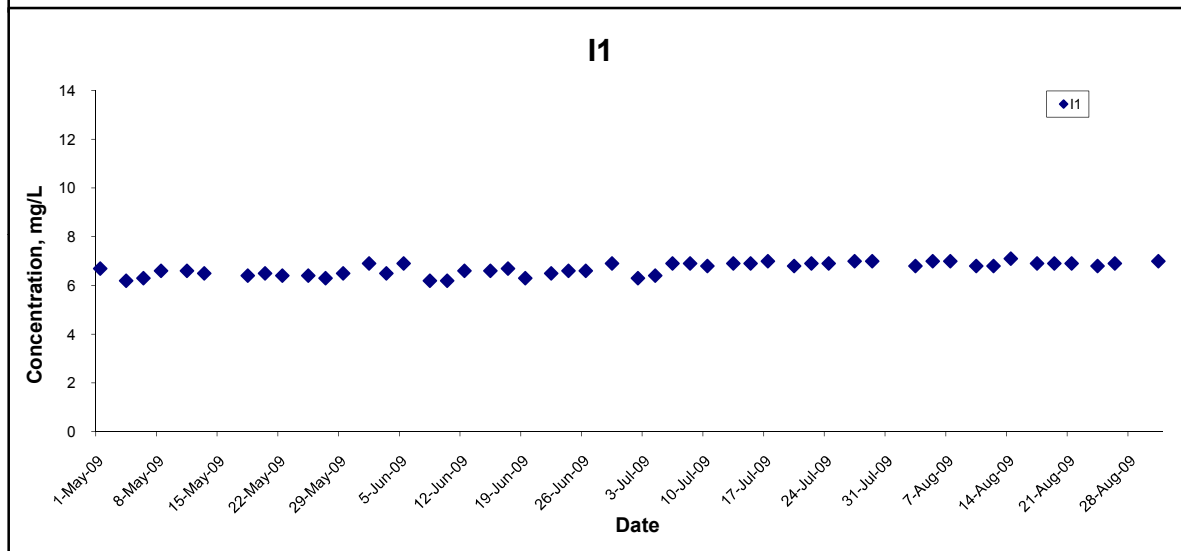
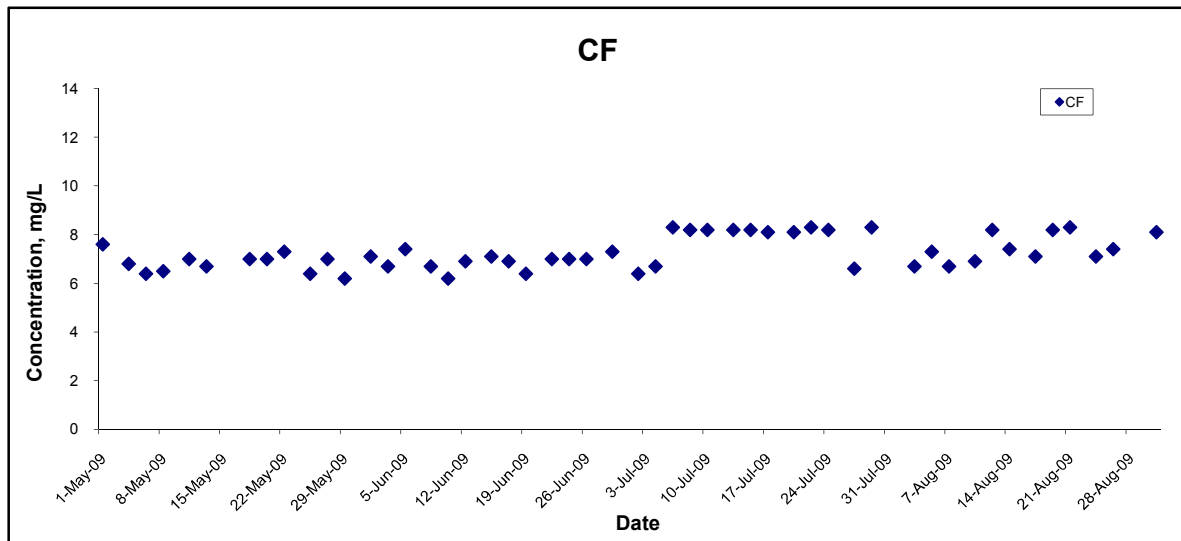
Dissolved Oxygen (Bottom) at Mid-Ebb Tide



Title Contract No. DC/2007/10 Design and Construction of Hong Kong West Drainage Tunnel Graphical Presentation of Water Quality Monitoring Results	Scale	N.T.S	Project No.	MA8001
	Date	Aug 09	Appendix	H

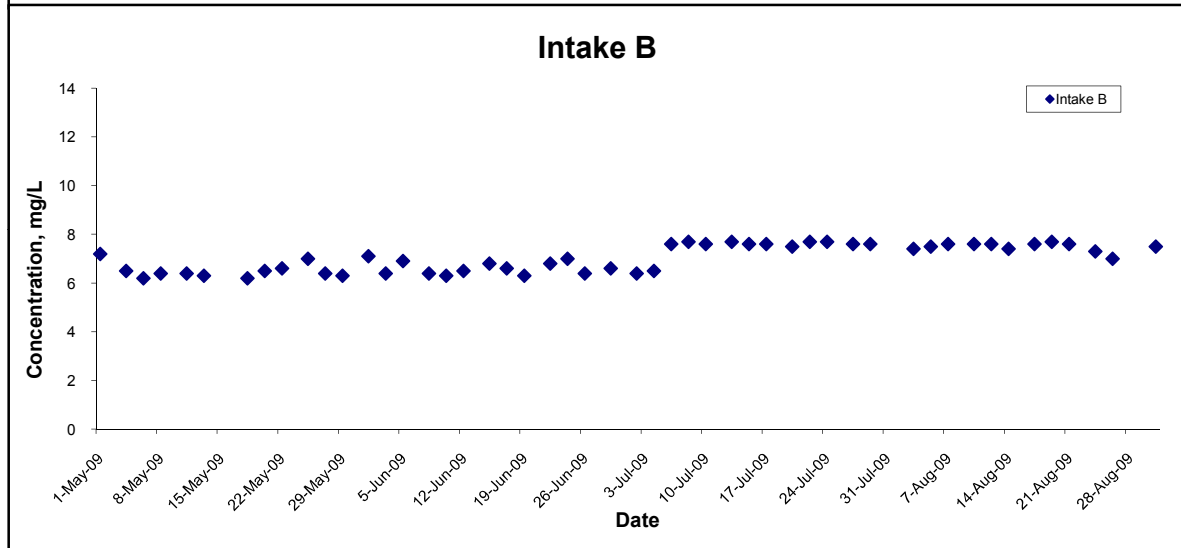
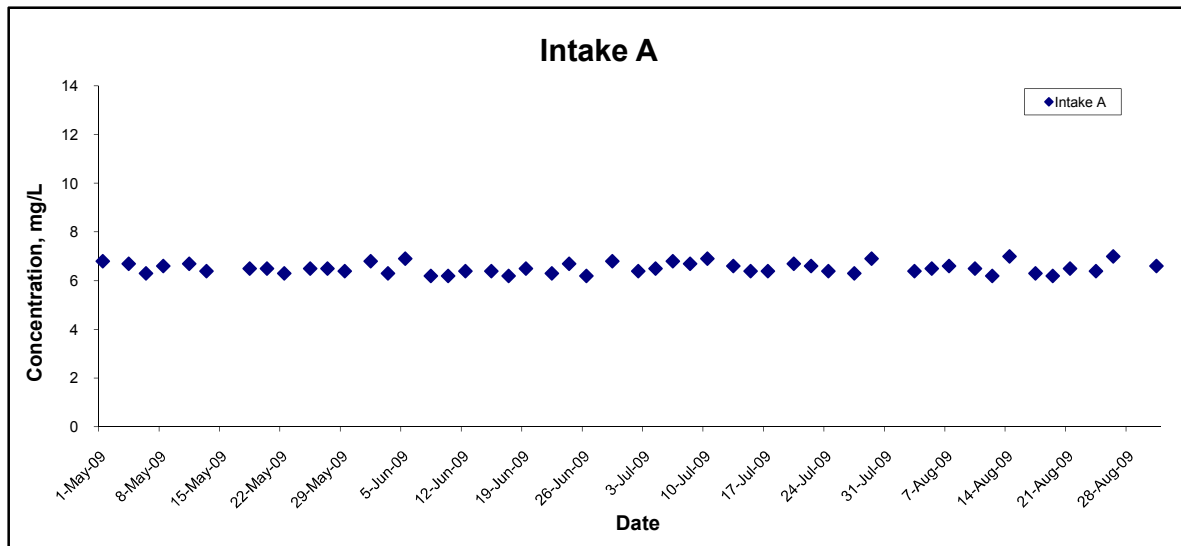


Dissolved Oxygen (Bottom) at Mid-Flood Tide



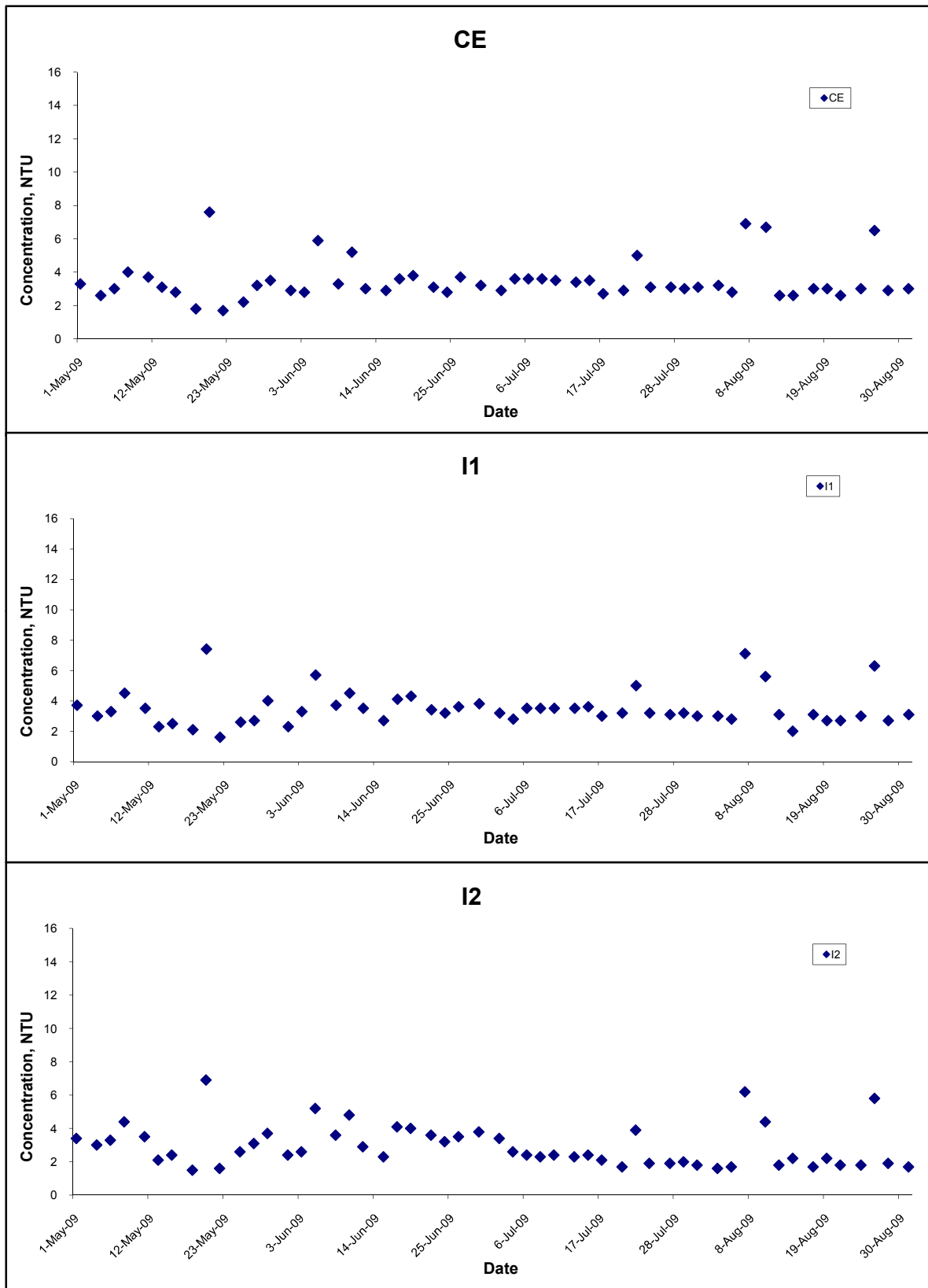
Title Contract No. DC/2007/10 Design and Construction of Hong Kong West Drainage Tunnel Graphical Presentation of Water Quality Monitoring Results	Scale N.T.S	Project No. MA8001	
	Date Aug 09	Appendix H	

Dissolved Oxygen (Bottom) at Mid-Flood Tide



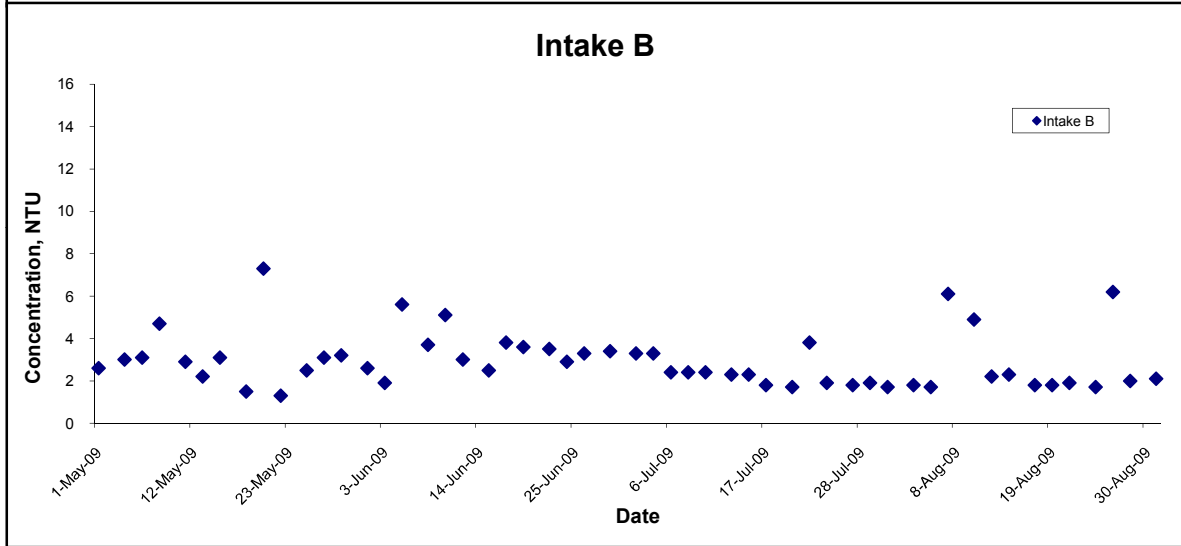
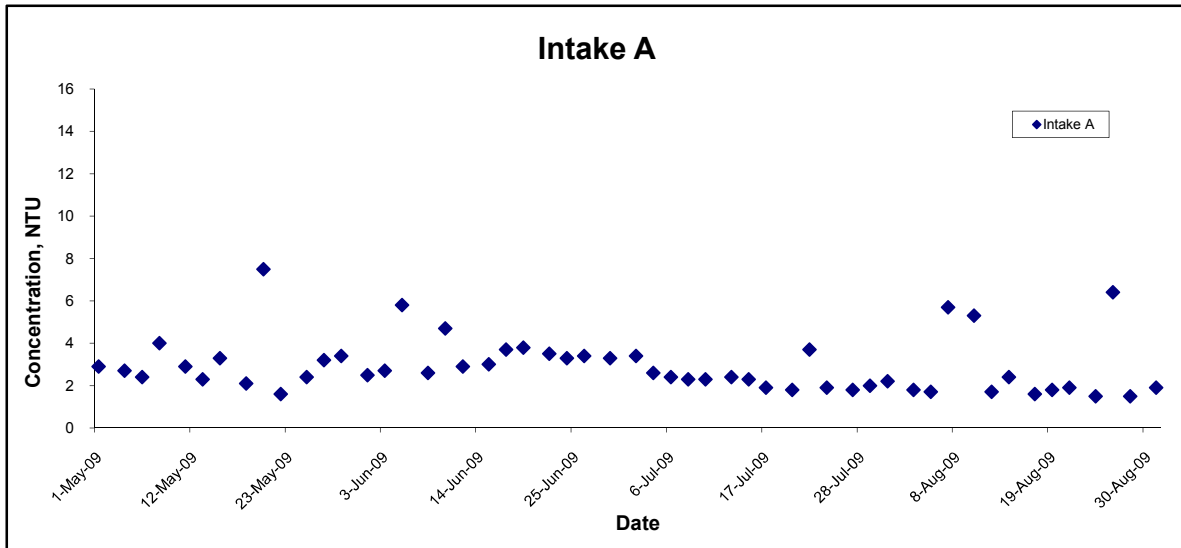
Title Contract No. DC/2007/10 Design and Construction of Hong Kong West Drainage Tunnel Graphical Presentation of Water Quality Monitoring Results	Scale N.T.S	Project No. MA8001	
	Date Aug 09	Appendix H	

Turbidity (Depth-averaged) at Mid-Ebb Tide



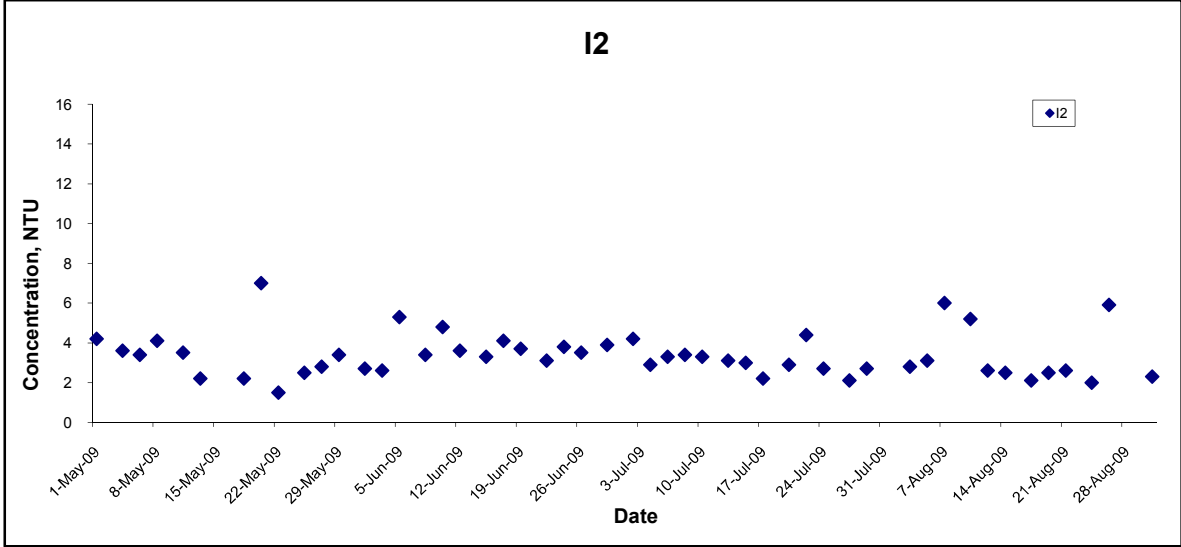
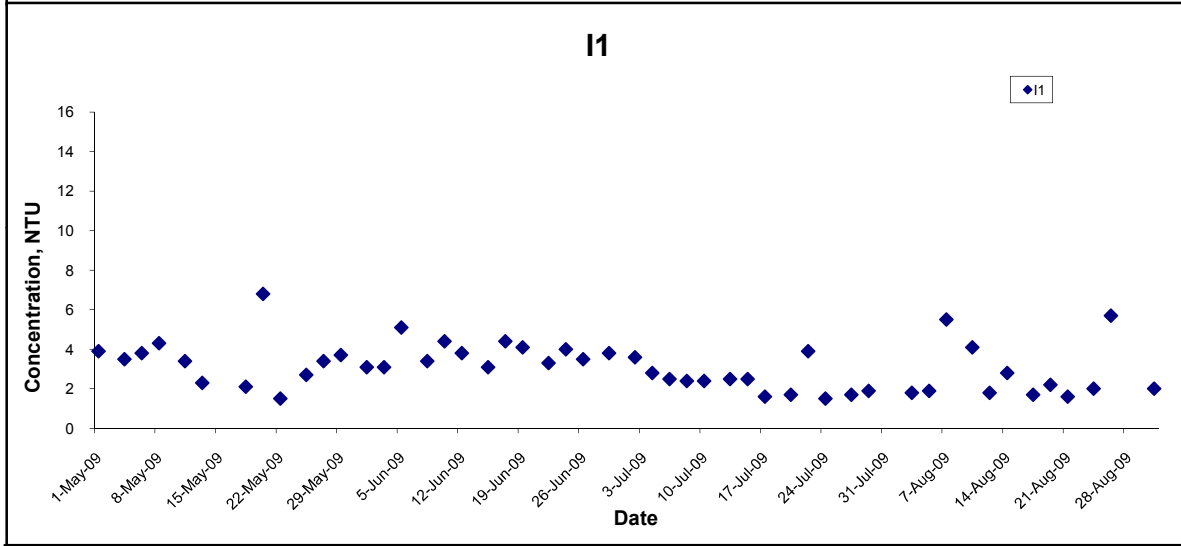
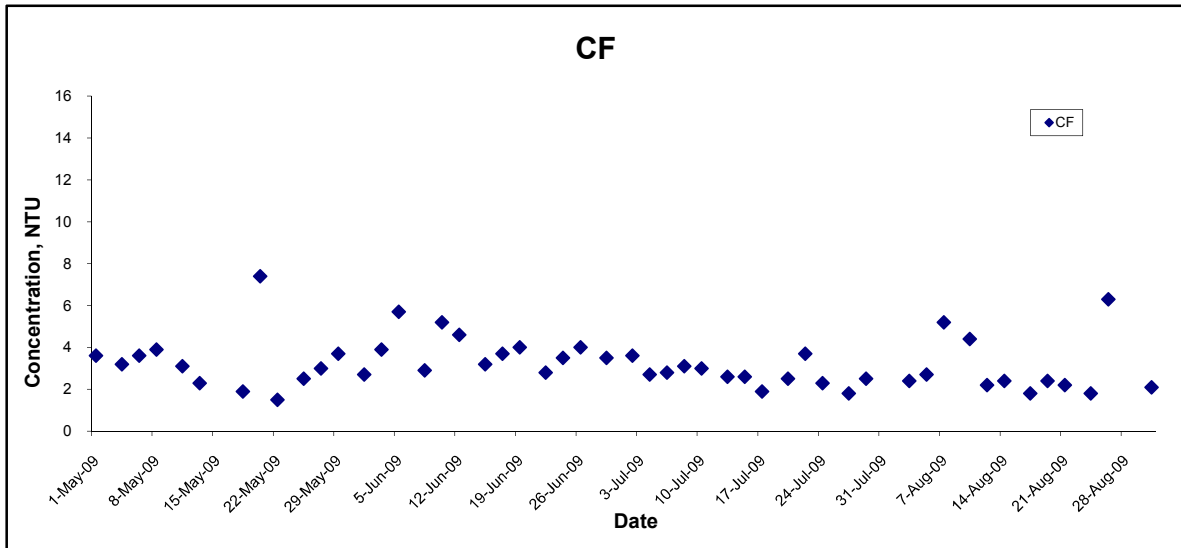
Title Contract No. DC/2007/10 Design and Construction of Hong Kong West Drainage Tunnel Graphical Presentation of Water Quality Monitoring Results	Scale N.T.S	Project No. MA8001	CINOTECH
	Date Aug 09	Appendix H	

Turbidity (Depth-averaged) at Mid-Ebb Tide



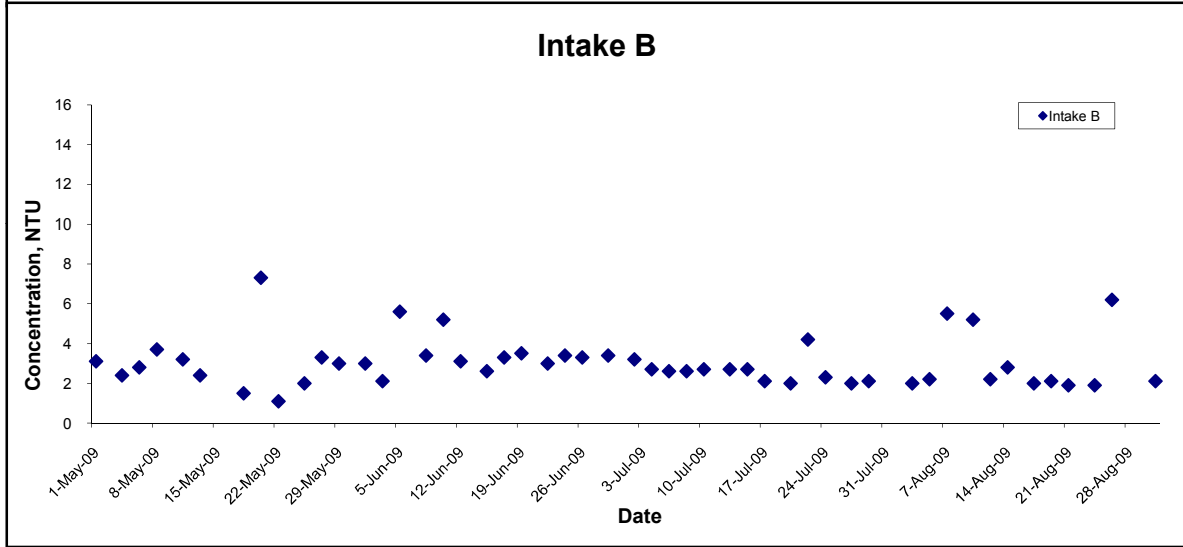
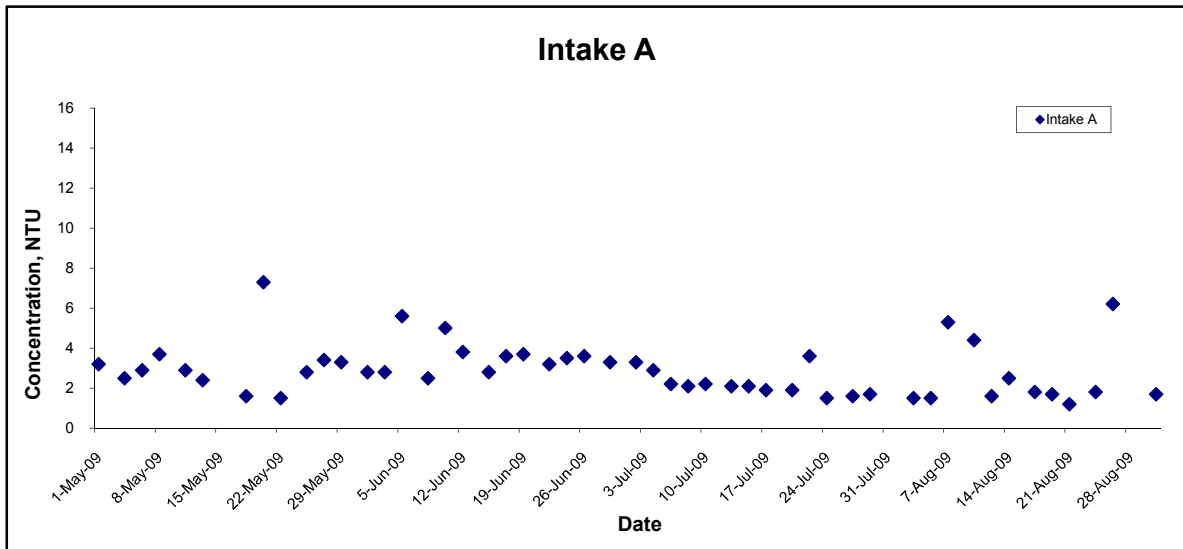
Title Contract No. DC/2007/10 Design and Construction of Hong Kong West Drainage Tunnel Graphical Presentation of Water Quality Monitoring Results	Scale N.T.S	Project No. MA8001	
	Date Aug 09	Appendix H	

Turbidity (Depth-averaged) at Mid-Flood Tide



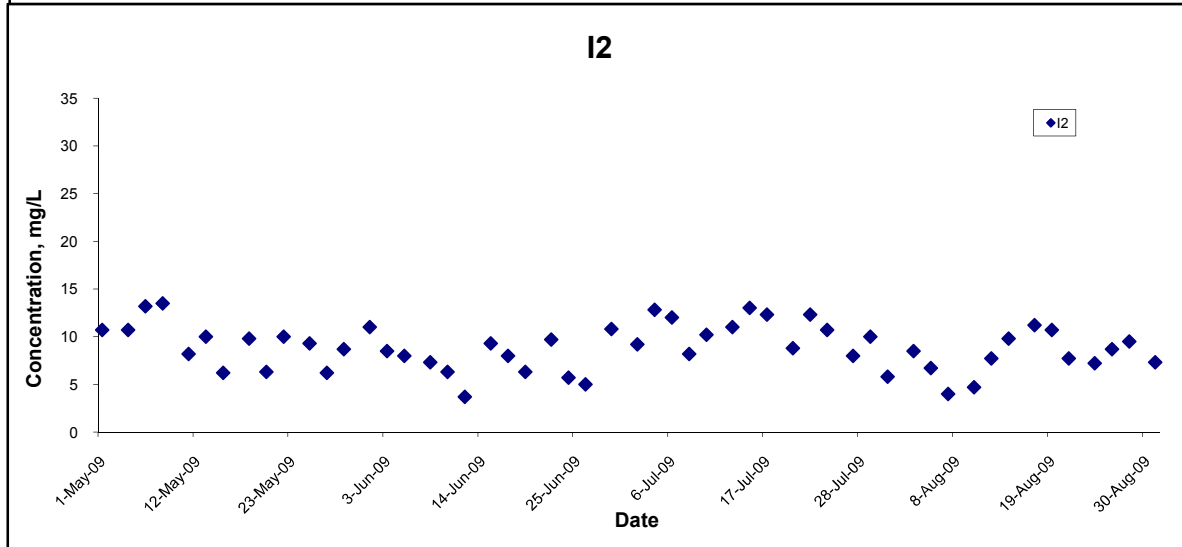
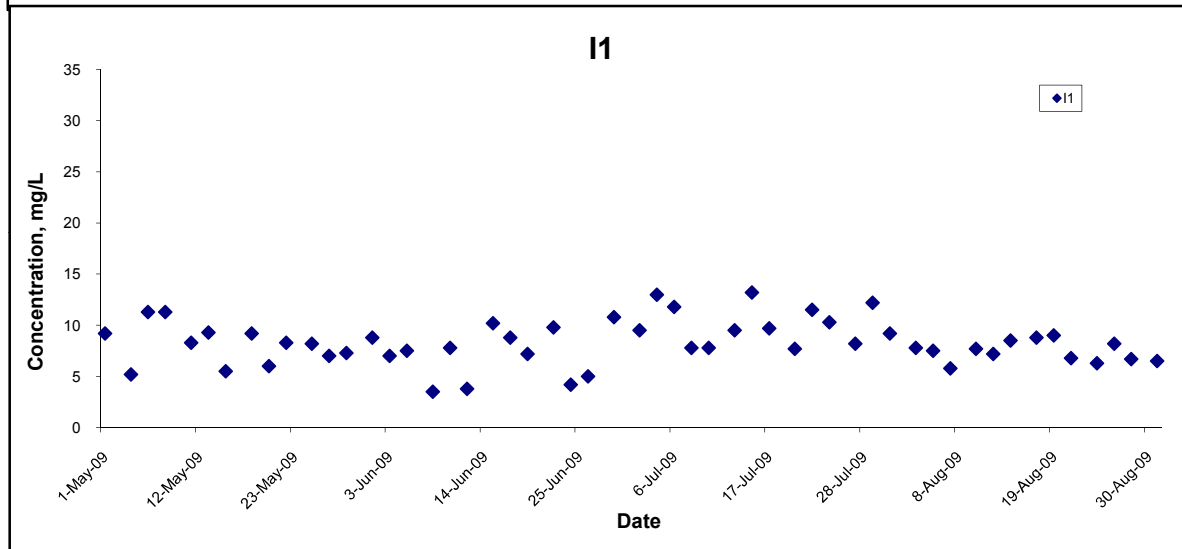
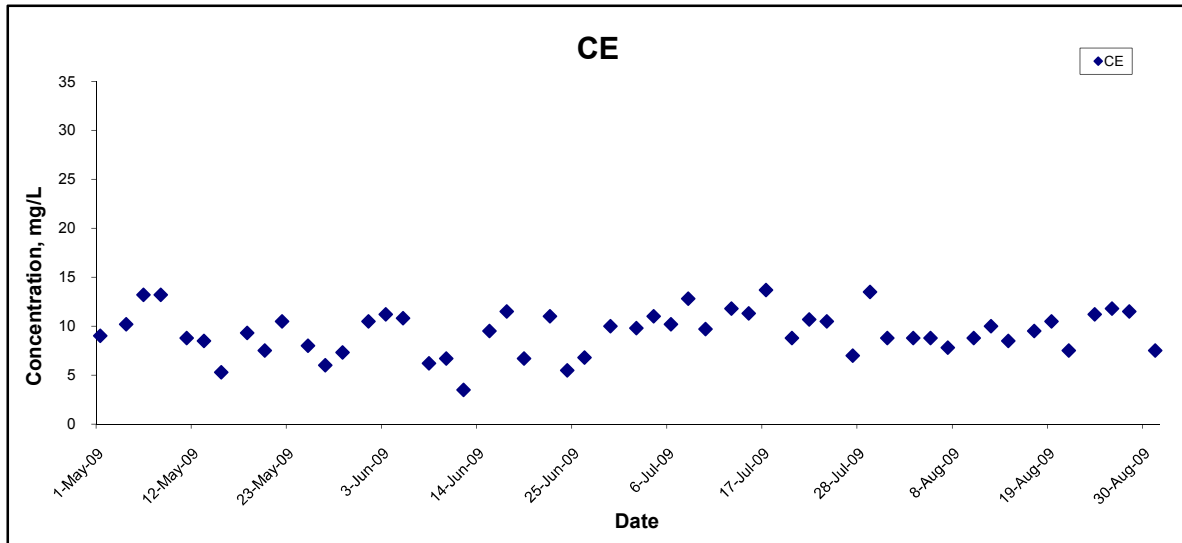
Title Contract No. DC/2007/10 Design and Construction of Hong Kong West Drainage Tunnel Graphical Presentation of Water Quality Monitoring Results	Scale N.T.S	Project No. MA8001	CINOTECH
	Date Aug 09	Appendix H	

Turbidity (Depth-averaged) at Mid-Flood Tide



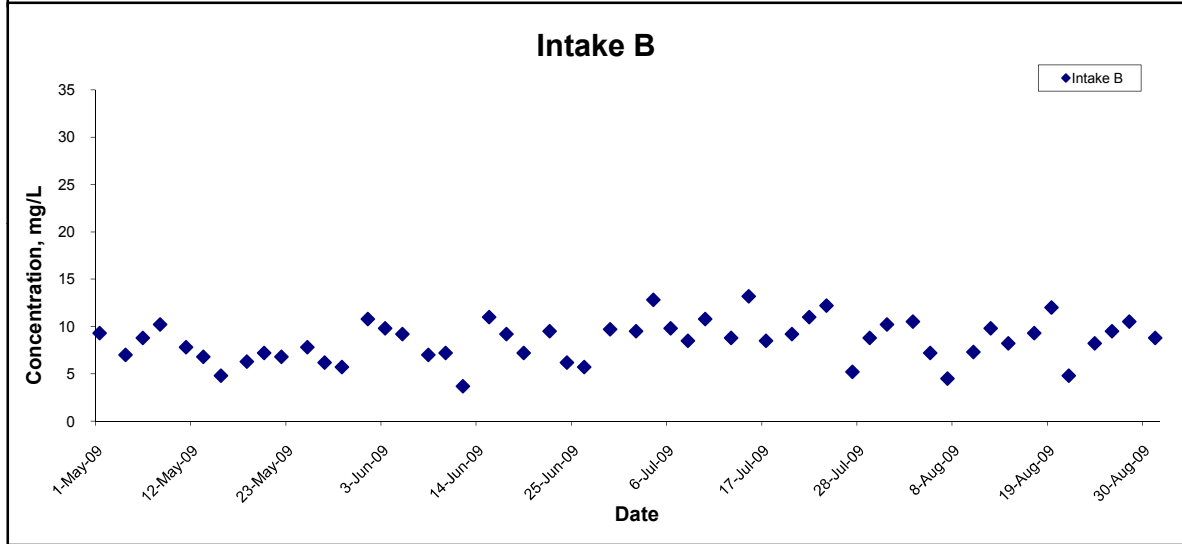
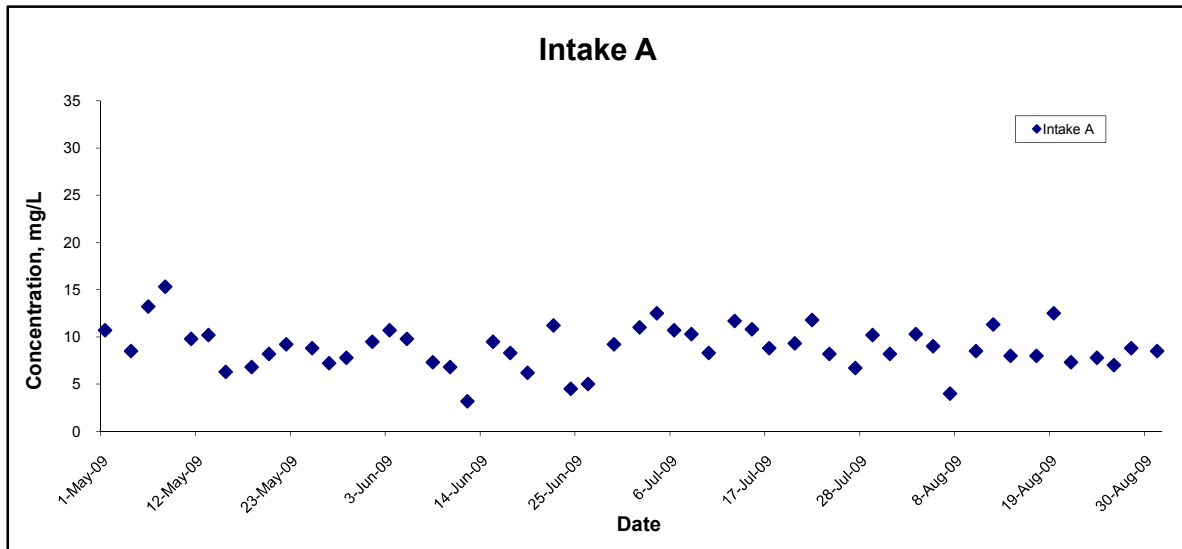
Title Contract No. DC/2007/10 Design and Construction of Hong Kong West Drainage Tunnel Graphical Presentation of Water Quality Monitoring Results	Scale N.T.S	Project No. MA8001	
	Date Aug 09	Appendix H	

Suspended Solids (Depth-averaged) at Mid-Ebb Tide



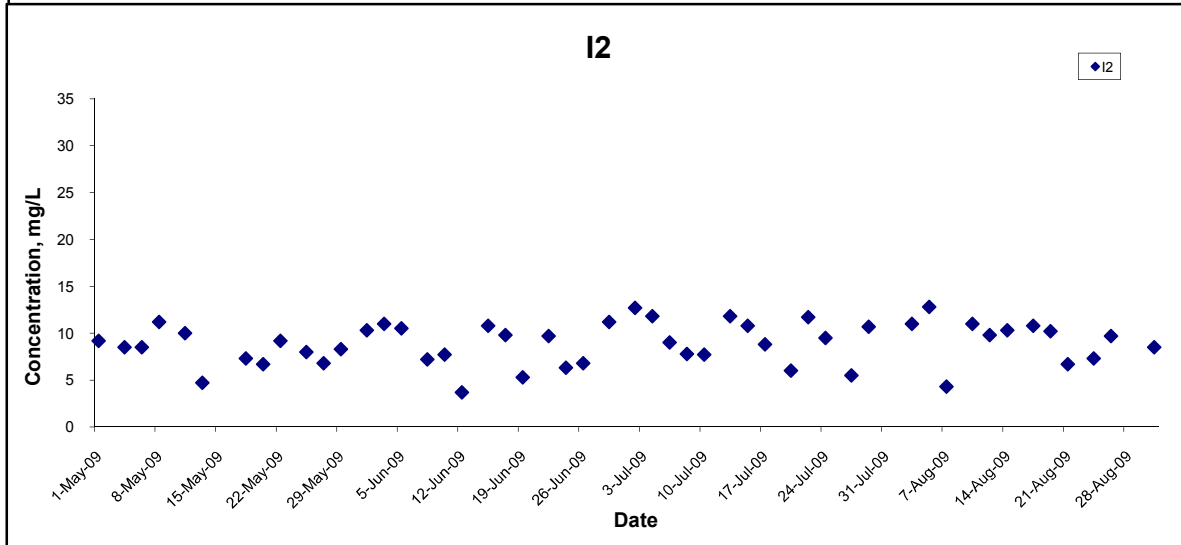
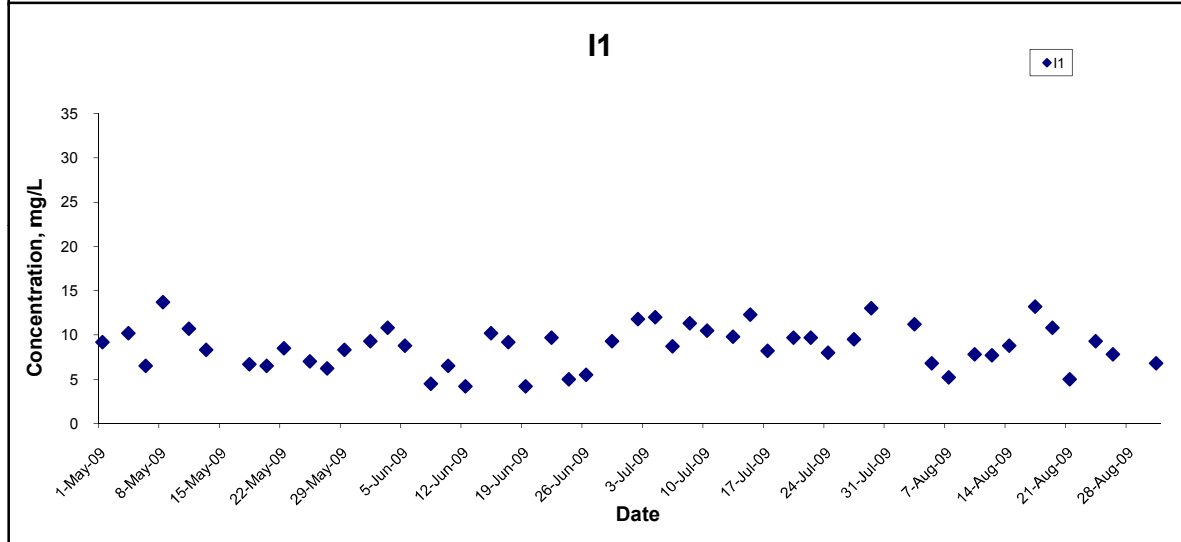
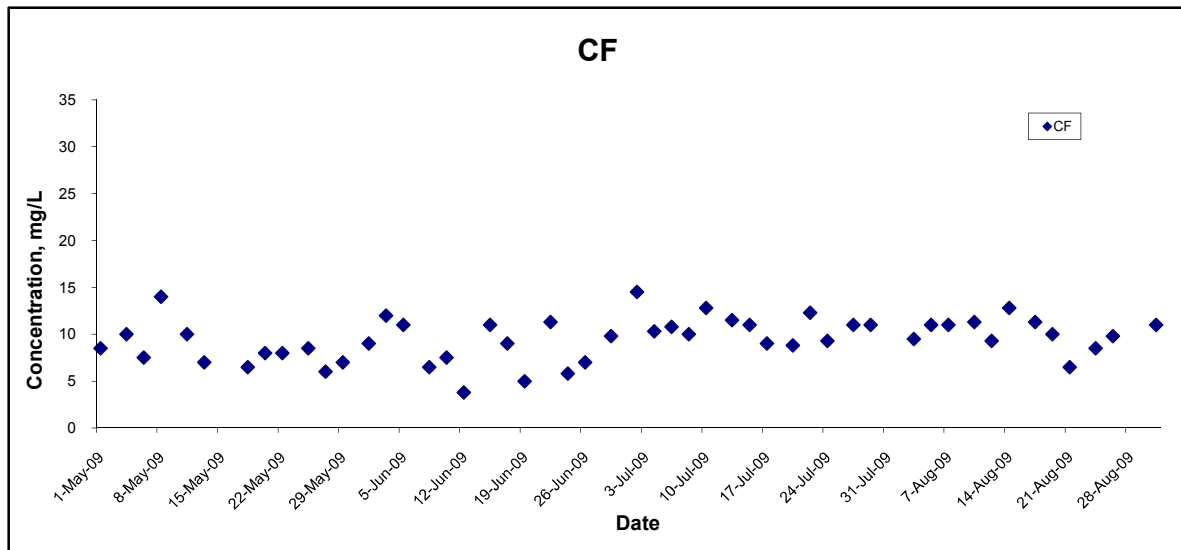
Title Contract No. DC/2007/10 Design and Construction of Hong Kong West Drainage Tunnel Graphical Presentation of Water Quality Monitoring Results	Scale N.T.S	Project No. MA8001	
	Date Aug 09	Appendix H	

Suspended Solids (Depth-averaged) at Mid-Ebb Tide



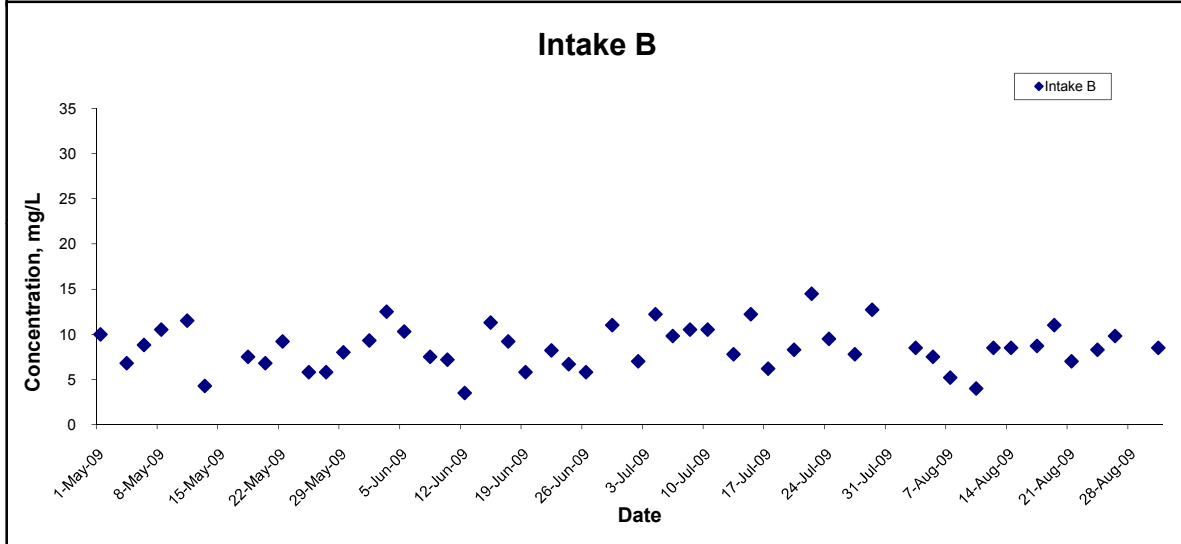
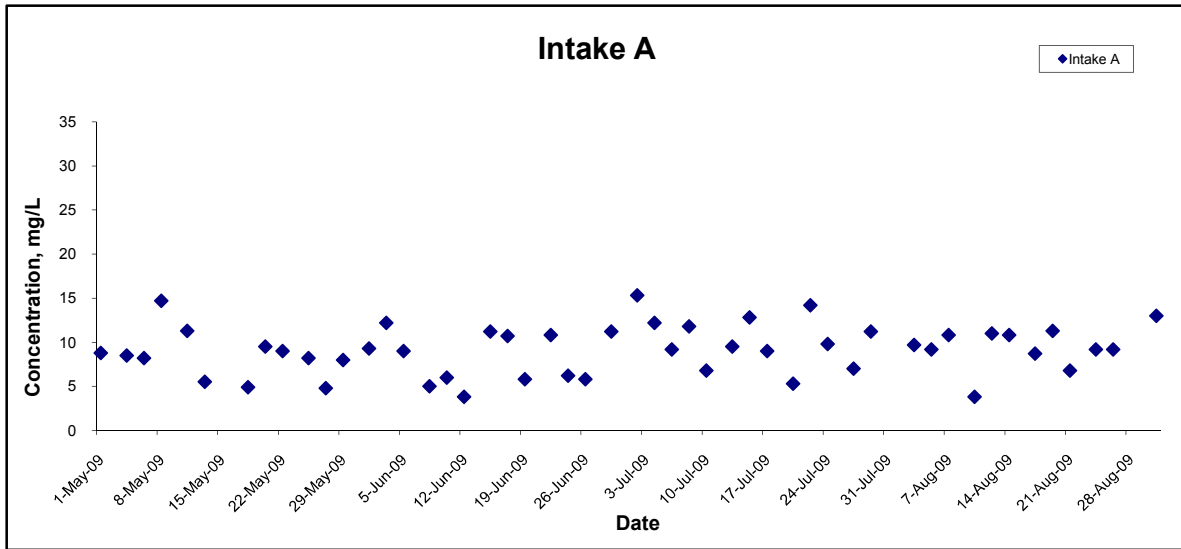
Title Contract No. DC/2007/10 Design and Construction of Hong Kong West Drainage Tunnel Graphical Presentation of Water Quality Monitoring Results	Scale N.T.S	Project No. MA8001	
	Date Aug 09	Appendix H	

Suspended Solids (Depth-averaged) at Mid-Flood Tide



Title Contract No. DC/2007/10 Design and Construction of Hong Kong West Drainage Tunnel Graphical Presentation of Water Quality Monitoring Results	Scale N.T.S	Project No. MA8001	CINOTECH
	Date Aug 09	Appendix H	

Suspended Solids (Depth-averaged) at Mid-Flood Tide



Title Contract No. DC/2007/10 Design and Construction of Hong Kong West Drainage Tunnel Graphical Presentation of Water Quality Monitoring Results	Scale N.T.S	Project No. MA8001	CINOTECH
	Date Aug 09	Appendix H	