

Water Quality Monitoring Results at CE - Mid-Ebb Tide

Date	Weather Condition	Sea Condition**	Sampling Time	Depth (m)		Water Temperature (°C)		pH		Salinity ppt		DO Saturation (%)		Dissolved Oxygen (mg/L)			Turbidity (NTU)			Suspended Solids (mg/L)		
						Value	Average	Value	Average	Value	Average	Value	Average	Value	Average	DA*	Value	Average	DA*	Value	Average	DA*
1-Apr-09	Sunny	Calm	15:44	Surface	1	23.0 23.0	23.0	8.3 7.4	7.9	35.5 35.6	35.6	107.7 107.8	107.8	7.3 7.3	7.3	7.2	3.7 4.3	4.0	3.6	9.0 9.0	9.0	7.5
				Middle	5.5	22.5 22.5	22.5	8.4 7.5	8.0	36.0 36.0	36.0	102.5 101.7	102.1	7.0 6.9	7.0		3.7 3.9	3.8		6.0 7.0	6.5	
				Bottom	10	22.1 22.1	22.1	7.7 7.5	7.6	36.3 36.2	36.3	96.1 94.2	95.2	6.5 6.4	6.5		3.1 2.9	3.0		7.0 7.0	7.0	
6-Apr-09	Cloudy	Calm	10:41	Surface	1	20.8 20.9	20.9	7.8 7.8	7.8	35.3 35.1	35.2	87.3 87.2	87.3	6.4 6.4	6.4	6.4	2.1 2.1	2.1	2.8	8.0 8.0	8.0	6.8
				Middle	5.5	21.0 21.0	21.0	8.0 7.9	8.0	36.6 33.8	35.2	87.2 87.2	87.2	6.3 6.4	6.4		2.8 2.8	2.8		8.0 8.0	8.0	
				Bottom	10	21.0 21.0	21.0	7.7 7.8	7.8	36.6 37.1	36.9	85.9 85.7	85.8	6.2 6.2	6.2		3.5 3.5	3.5		4.0 5.0	4.5	
8-Apr-09	Sunny	Calm	11:34	Surface	1	21.1 21.1	21.1	7.8 7.8	7.8	36.5 35.2	35.9	91.2 88.6	89.9	6.6 6.5	6.6	6.4	6.8 6.8	6.8	9.3	5.0 5.0	5.0	7.2
				Middle	5.5	21.0 21.0	21.0	7.7 7.8	7.8	36.5 36.3	36.4	84.2 84.2	84.2	6.1 6.1	6.1		9.8 9.9	9.9		7.0 7.0	7.0	
				Bottom	10	21.0 21.0	21.0	8.0 7.9	8.0	36.4 34.1	35.3	87.5 87.5	87.5	6.3 6.3	6.3		10.8 11.3	11.1		10.0 9.0	9.5	
10-Apr-09	Sunny	Calm	12:28	Surface	1	21.6 21.6	21.6	7.9 7.9	7.9	36.9 36.9	36.9	89.1 88.6	88.9	6.5 6.4	6.5	6.4	2.4 2.5	2.5	2.8	3.0 3.0	3.0	4.0
				Middle	5.5	21.6 21.6	21.6	7.9 8.0	8.0	37.0 37.0	37.0	87.0 86.6	86.8	6.3 6.3	6.3		2.3 2.4	2.4		5.0 5.0	5.0	
				Bottom	10	21.6 21.6	21.6	7.9 7.9	7.9	37.1 37.0	37.1	86.4 86.4	86.4	6.3 6.3	6.3		3.6 3.4	3.5		4.0 4.0	4.0	
13-Apr-09	Fine	Calm	14:28	Surface	1	22.9 22.9	22.9	8.2 8.1	8.2	36.1 34.8	35.5	84.0 84.1	84.1	6.3 6.3	6.3	6.3	4.8 4.8	4.8	4.5	7.0 7.0	7.0	7.8
				Middle	5.5	22.8 22.8	22.8	8.6 8.7	8.7	36.8 35.9	36.4	84.4 84.8	84.6	6.3 6.3	6.3		4.4 4.5	4.5		11.0 11.0	11.0	
				Bottom	10	22.8 22.8	22.8	8.3 8.3	8.3	35.9 33.8	34.9	85.8 85.7	85.8	6.4 6.4	6.4		4.2 4.2	4.2		5.0 6.0	5.5	
15-Apr-09	Sunny	Calm	16:49	Surface	1	22.0 22.1	22.1	8.0 7.6	7.8	36.5 36.3	36.4	97.1 96.1	96.6	7.1 7.0	7.1	6.9	3.2 3.2	3.2	3.5	3.0 3.0	3.0	3.5
				Middle	5.5	22.3 22.4	22.4	8.2 8.4	8.3	36.2 36.2	36.2	93.4 92.2	92.8	6.7 6.6	6.7		3.3 3.3	3.3		4.0 3.0	3.5	
				Bottom	10	22.4 22.4	22.4	7.7 8.2	8.0	36.2 36.2	36.2	89.3 88.9	89.1	6.4 6.4	6.4		3.9 4.0	4.0		4.0 4.0	4.0	
17-Apr-09	Fine	Calm	16:46	Surface	1	22.4 22.3	22.4	7.9 7.8	7.9	36.7 36.7	36.7	92.3 92.5	92.4	6.5 6.5	6.5	6.6	1.9 1.9	1.9	2.6	3.0 3.0	3.0	3.8
				Middle	5.5	22.2 22.2	22.2	7.7 8.0	7.9	36.9 36.1	36.5	93.5 93.8	93.7	6.6 6.6	6.6		2.1 2.4	2.3		3.0 3.0	3.0	
				Bottom	10	22.1 22.1	22.1	7.9 7.8	7.9	35.3 36.4	35.9	92.7 91.8	92.3	6.6 6.5	6.6		3.4 3.5	3.5		6.0 5.0	5.5	
20-Apr-09	Sunny	Calm	10:06	Surface	1	25.3 25.3	25.3	8.0 7.9	8.0	35.0 33.8	34.4	90.5 88.0	89.3	6.6 6.5	6.6	6.4	3.3 3.3	3.3	3.4	4.0 4.0	4.0	5.2
				Middle	5.5	25.5 25.4	25.5	8.2 8.1	8.2	35.3 35.4	35.4	83.7 83.7	83.7	6.1 6.2	6.2		3.6 3.6	3.6		5.0 6.0	5.5	
				Bottom	10	25.4 25.4	25.4	7.9 8.0	8.0	35.4 35.4	35.4	83.2 83.1	83.2	6.2 6.2	6.2		3.4 3.4	3.4		6.0 6.0	6.0	
22-Apr-09	Fine	Calm	10:49	Surface	1	22.8 22.8	22.8	7.8 7.7	7.8	36.6 37.0	36.8	91.3 91.1	91.2	6.4 6.4	6.4	6.4	2.4 2.3	2.4	2.5	5.0 5.0	5.0	6.3
				Middle	5.5	22.8 22.8	22.8	7.9 7.9	7.9	37.0 36.8	36.9	91.1 90.8	91.0	6.4 6.4	6.4		2.3 2.3	2.3		6.0 6.0	6.0	
				Bottom	10	22.8 22.8	22.8	7.9 8.0	8.0	36.5 36.2	36.4	90.6 89.9	90.3	6.4 6.4	6.4		2.6 2.8	2.7		8.0 8.0	8.0	

Water Quality Monitoring Results at CE - Mid-Ebb Tide

Date	Weather Condition	Sea Condition**	Sampling Time	Depth (m)		Water Temperature (°C)		pH		Salinity ppt		DO Saturation (%)		Dissolved Oxygen (mg/L)			Turbidity (NTU)			Suspended Solids (mg/L)		
						Value	Average	Value	Average	Value	Average	Value	Average	Value	Average	DA*	Value	Average	DA*	Value	Average	DA*
24-Apr-09	Sunny	Calm	11:36	Surface	1	20.8 20.8	20.8	7.9 7.9	7.9	36.2 36.2	36.2	91.1 90.5	90.8	6.6 6.5	6.6	6.5	2.5 2.6	2.6	3.2	10.0 10.0	10.0	9.8
				Middle	5.5	20.8 20.8	20.8	8.2 8.3	8.3	36.3 36.3	36.3	88.9 88.5	88.7	6.4 6.4	6.4		2.3 2.4	2.4		9.0 10.0	9.5	
				Bottom	10	20.8 20.8	20.8	7.8 8.0	7.9	36.3 36.3	36.3	88.2 88.2	88.2	6.4 6.4	6.4		4.6 4.7	4.7		10.0 10.0	10.0	
27-Apr-09	Sunny	Calm	13:42	Surface	1	22.6 22.6	22.6	8.2 8.0	8.1	35.0 36.7	35.9	89.6 89.4	89.5	6.6 6.5	6.6	6.6	3.5 3.5	3.5	3.4	9.0 9.0	9.0	8.8
				Middle	5.5	22.5 22.5	22.5	8.3 8.1	8.2	37.0 35.4	36.2	89.7 90.0	89.9	6.5 6.6	6.6		3.5 3.4	3.5		9.0 9.0	9.0	
				Bottom	10	22.4 22.4	22.4	7.9 7.9	7.9	35.1 36.0	35.6	90.1 90.2	90.2	6.6 6.6	6.6		3.4 3.1	3.3		8.0 9.0	8.5	
29-Apr-09	Sunny	Calm	15:17	Surface	1	22.4 22.4	22.4	7.9 7.9	7.9	36.7 36.4	36.6	86.7 86.7	86.7	6.4 6.4	6.4	6.4	3.7 3.8	3.8	3.8	8.0 8.0	8.0	8.2
				Middle	5.5	22.3 22.3	22.3	7.7 7.9	7.8	36.3 36.9	36.6	86.8 86.9	86.9	6.4 6.4	6.4		3.4 3.3	3.4		9.0 9.0	9.0	
				Bottom	10	22.2 22.2	22.2	7.8 7.6	7.7	37.0 37.0	37.0	86.8 86.8	86.8	6.4 6.4	6.4		4.3 4.3	4.3		7.0 8.0	7.5	

Remarks: The reporting limit for laboratory analysis of suspended solids is 2.5 mg/L. For the results below the reporting limit, the SS level will be taken as 2.5 mg/L.

* DA: Depth-Averaged

** Calm: Small or no wave; Moderate: Between calm and rough; Rough : White capped or rougher

Water Quality Monitoring Results at CF - Mid-Flood Tide

Date	Weather Condition	Sea Condition**	Sampling Time	Depth (m)		Water Temperature (°C)		pH		Salinity ppt		DO Saturation (%)		Dissolved Oxygen (mg/L)			Turbidity (NTU)			Suspended Solids (mg/L)					
						Value	Average	Value	Average	Value	Average	Value	Average	Value	Average	DA*	Value	Average	DA*	Value	Average	DA*			
1-Apr-09	Sunny	Calm	09:23	Surface	1	22.2 22.3	22.3	7.9 8.1	8.0	36.0 36.1	36.1	104.5 104.5	104.5	7.1 7.1	7.1	7.1	2.1 2.0	2.1	3.4	6.0 6.0	6.0	10.3			
				Middle	-	-	-	-	-	-	-	-	-	-	-		-	-		-	-		-	-	-
				Bottom	3	21.9 21.8	21.9	7.7 8.1	7.9	35.4 35.4	35.4	105.7 104.6	105.2	7.2 7.1	7.2		4.5 4.6	4.6		4.5 4.6	15.0 14.0		14.5		
3-Apr-09	Fine	Calm	10:32	Surface	1	20.8 20.9	20.9	7.9 8.0	8.0	36.7 36.8	36.8	89.1 87.5	88.3	6.4 6.3	6.4	6.4	2.3 2.5	2.4	2.5	12.0 12.0	12.0	11.8			
				Middle	-	-	-	-	-	-	-	-	-	-	-		-	-		-	-		-	-	
				Bottom	3	20.9 20.9	20.9	7.9 7.6	7.8	34.1 36.2	35.2	84.9 84.8	84.9	6.2 6.1	6.2		2.6 2.6	2.6		2.6 2.6	12.0 11.0		11.5		
6-Apr-09	Cloudy	Calm	15:42	Surface	1	21.1 21.2	21.2	7.8 7.9	7.9	36.2 36.1	36.2	92.9 91.3	92.1	6.7 6.6	6.7	6.7	3.1 3.1	3.1	3.2	8.0 8.0	8.0	7.0			
				Middle	-	-	-	-	-	-	-	-	-	-	-		-	-		-	-		-	-	
				Bottom	3	21.1 21.1	21.1	7.9 8.0	8.0	36.0 35.0	35.5	90.4 90.3	90.4	6.5 6.5	6.5		3.2 3.2	3.2		3.2 3.2	6.0 6.0		6.0		
8-Apr-09	Fine	Calm	16:50	Surface	1	21.3 21.2	21.3	7.7 7.8	7.8	36.8 36.8	36.8	101.0 99.6	100.3	7.3 7.2	7.3	7.3	4.1 4.0	4.1	4.1	4.0 4.0	4.0	4.0			
				Middle	-	-	-	-	-	-	-	-	-	-	-		-	-		-	-		-	-	
				Bottom	3	21.2 21.2	21.2	7.8 7.7	7.8	36.8 36.9	36.9	94.6 94.5	94.6	6.8 6.8	6.8		4.0 4.1	4.1		4.1 4.1	6.0 7.0		6.5		
10-Apr-09	Sunny	Calm	17:31	Surface	1	21.6 21.7	21.7	7.8 7.8	7.8	36.2 36.7	36.5	90.3 88.0	89.2	6.6 6.4	6.5	6.5	2.6 2.6	2.6	3.3	3.0 3.0	3.0	4.0			
				Middle	-	-	-	-	-	-	-	-	-	-	-		-	-		-	-		-	-	
				Bottom	3	21.7 21.7	21.7	8.1 8.1	8.1	37.1 37.0	37.1	87.4 87.5	87.5	6.3 6.4	6.4		3.9 3.9	3.9		3.9 3.9	5.0 5.0		5.0		
13-Apr-09	Fine	Calm	08:25	Surface	1	22.5 22.4	22.5	8.0 8.3	8.2	35.7 36.1	35.9	104.0 102.6	103.3	7.6 7.5	7.6	7.6	3.2 3.4	3.3	3.2	3.0 3.0	3.0	6.5			
				Middle	-	-	-	-	-	-	-	-	-	-	-		-	-		-	-		-	-	
				Bottom	3	22.4 22.4	22.4	8.7 8.4	8.6	36.1 35.8	36.0	97.7 97.6	97.7	7.2 7.2	7.2		3.1 3.1	3.1		3.1 3.1	10.0 10.0		10.0		
15-Apr-09	Sunny	Calm	08:13	Surface	1	22.4 22.4	22.4	7.7 8.0	7.9	35.4 35.4	35.4	94.5 93.6	94.1	6.9 6.8	6.9	6.9	4.3 4.3	4.3	4.3	<2.5 <2.5	<2.5	2.8			
				Middle	-	-	-	-	-	-	-	-	-	-	-		-	-		-	-		-	-	
				Bottom	3	22.4 22.4	22.4	8.2 8.0	8.1	35.4 35.4	35.4	89.2 88.2	88.7	6.5 6.4	6.5		4.2 4.3	4.3		4.3 4.3	3.0 3.0		3.0		
17-Apr-09	Sunny	Calm	09:18	Surface	1	22.5 22.5	22.5	8.1 8.1	8.1	35.8 36.0	35.9	99.3 98.9	99.1	7.0 7.0	7.0	7.0	1.2 1.2	1.2	1.7	4.0 4.0	4.0	5.3			
				Middle	-	-	-	-	-	-	-	-	-	-	-		-	-		-	-		-	-	
				Bottom	3	22.2 22.2	22.2	7.9 8.1	8.0	36.8 36.8	36.8	98.3 98.3	98.3	6.9 6.9	6.9		2.0 2.1	2.1		2.1 2.1	7.0 6.0		6.5		
20-Apr-09	Sunny	Calm	15:03	Surface	1	25.2 25.2	25.2	8.0 8.2	8.1	35.1 34.9	35.0	100.0 98.6	99.3	7.3 7.2	7.3	7.3	3.1 3.0	3.1	3.0	4.0 4.0	4.0	4.5			
				Middle	-	-	-	-	-	-	-	-	-	-	-		-	-		-	-		-	-	
				Bottom	3	25.2 25.2	25.2	8.3 8.1	8.2	34.9 32.8	33.9	93.8 93.7	93.8	6.8 6.8	6.8		2.7 2.9	2.8		2.8 2.8	5.0 5.0		5.0		

Water Quality Monitoring Results at CF - Mid-Flood Tide

Date	Weather Condition	Sea Condition**	Sampling Time	Depth (m)		Water Temperature (°C)		pH		Salinity ppt		DO Saturation (%)		Dissolved Oxygen (mg/L)			Turbidity (NTU)			Suspended Solids (mg/L)					
						Value	Average	Value	Average	Value	Average	Value	Average	Value	Average	DA*	Value	Average	DA*	Value	Average	DA*			
22-Apr-09	Fine	Calm	16:43	Surface	1	22.8 22.8	22.8	7.9 8.0	8.0	36.7 36.2	36.5	99.9 99.8	99.9	7.0 7.0	7.0	7.0	5.2 4.9	5.1	5.0	8.0 8.0	8.0	6.8			
				Middle	-	-	-	-	-	-	-	-	-	-	-		-	-		-	-		-	-	-
				Bottom	3	22.8 22.8	22.8	8.1 7.9	8.0	36.4 34.5	35.5	99.9 99.9	99.9	7.0 7.0	7.0		7.0	4.7 5.0		4.9	4.7 5.0		4.9	5.0 6.0	5.5
24-Apr-09	Fine	Calm	16:49	Surface	1	20.8 20.8	20.8	8.2 8.3	8.3	35.5 36.0	35.8	92.2 89.8	91.0	6.7 6.5	6.6	6.6	4.2 3.8	4.0	3.7	10.0 10.0	10.0	9.8			
				Middle	-	-	-	-	-	-	-	-	-	-	-		-	-		-	-		-	-	-
				Bottom	3	20.8 20.8	20.8	8.2 8.2	8.2	36.3 36.3	36.3	89.3 89.2	89.3	6.4 6.4	6.4		6.4	3.4 3.2		3.3	3.4 3.2		3.3	9.0 10.0	9.5
27-Apr-09	Sunny	Calm	07:42	Surface	1	22.5 22.5	22.5	7.8 8.2	8.0	36.7 36.7	36.7	108.2 107.7	108.0	7.8 7.8	7.8	7.8	3.4 3.4	3.4	3.6	9.0 9.0	9.0	9.0			
				Middle	-	-	-	-	-	-	-	-	-	-	-		-	-		-	-		-	-	-
				Bottom	3	22.5 22.5	22.5	8.5 8.3	8.4	36.7 36.7	36.7	106.7 106.6	106.7	7.7 7.7	7.7		7.7	3.7 3.7		3.7	3.7 3.7		3.7	9.0 9.0	9.0
29-Apr-09	Sunny	Calm	07:47	Surface	1	22.5 22.5	22.5	7.8 7.8	7.8	36.2 34.6	35.4	97.5 96.7	97.1	6.8 6.8	6.8	6.8	3.9 3.6	3.8	3.9	7.0 8.0	7.5	7.8			
				Middle	-	-	-	-	-	-	-	-	-	-	-		-	-		-	-		-	-	-
				Bottom	3	22.6 22.6	22.6	7.8 7.8	7.8	34.6 35.5	35.1	95.4 95.3	95.4	6.7 6.7	6.7		6.7	4.0 3.9		4.0	4.0 3.9		4.0	8.0 8.0	8.0

Remarks: The reporting limit for laboratory analysis of suspended solids is 2.5 mg/L. For the results below the reporting limit, the SS level will be taken as 2.5 mg/L.

* DA: Depth-Averaged

** Calm: Small or no wave; Moderate: Between calm and rough; Rough : White capped or rougher

Water Quality Monitoring Results at I1 - Mid-Ebb Tide

Date	Weather Condition	Sea Condition**	Sampling Time	Depth (m)		Water Temperature (°C)		pH		Salinity ppt		DO Saturation (%)		Dissolved Oxygen (mg/L)			Turbidity (NTU)			Suspended Solids (mg/L)		
						Value	Average	Value	Average	Value	Average	Value	Average	Value	Average	DA*	Value	Average	DA*	Value	Average	DA*
1-Apr-09	Sunny	Calm	16:10	Surface	1	22.7 22.7	22.7	8.1 7.7	7.9	35.9 35.9	35.9	101.1 101.2	101.2	6.9 6.9	6.9	6.6	3.9 4.0	4.0	3.8	7.0 7.0	7.0	7.3
				Middle	4.5	22.1 22.1	22.1	8.3 7.9	8.1	35.6 35.6	35.6	91.8 90.7	91.3	6.2 6.2	6.2		3.8 3.6	3.7		7.0 7.0	7.0	
				Bottom	8	21.5 21.5	21.5	7.4 7.2	7.3	35.8 35.8	35.8	89.8 88.0	88.9	6.3 6.2	6.3		3.6 3.8	3.7		8.0 8.0	8.0	
6-Apr-09	Cloudy	Calm	10:53	Surface	1	21.1 21.1	21.1	7.8 7.7	7.8	36.6 36.6	36.6	88.7 88.5	88.6	6.4 6.4	6.4	6.4	3.0 2.9	3.0	2.7	7.0 7.0	7.0	8.0
				Middle	4.5	21.1 21.1	21.1	7.9 7.8	7.9	36.8 36.7	36.8	88.2 88.1	88.2	6.3 6.3	6.3		2.5 2.8	2.7		8.0 8.0	8.0	
				Bottom	8	21.0 21.0	21.0	7.9 7.8	7.9	36.7 36.7	36.7	88.6 88.6	88.6	6.4 6.4	6.4		2.4 2.3	2.4		9.0 9.0	9.0	
8-Apr-09	Sunny	Calm	11:57	Surface	1	21.1 21.1	21.1	7.5 7.5	7.5	33.6 35.4	34.5	86.6 86.6	86.6	6.3 6.3	6.3	6.3	7.1 7.3	7.2	8.2	4.0 4.0	4.0	5.8
				Middle	4.5	21.1 21.1	21.1	7.5 7.6	7.6	35.1 36.1	35.6	87.1 87.1	87.1	6.3 6.3	6.3		8.9 8.6	8.8		7.0 7.0	7.0	
				Bottom	8	21.1 21.1	21.1	7.5 7.5	7.5	36.6 34.3	35.5	87.1 87.1	87.1	6.3 6.3	6.3		8.6 8.8	8.7		6.0 7.0	6.5	
10-Apr-09	Sunny	Calm	12:37	Surface	1	21.6 21.6	21.6	7.9 7.8	7.9	36.9 36.9	36.9	88.5 88.3	88.4	6.4 6.4	6.4	6.4	2.4 2.4	2.4	3.2	4.0 4.0	4.0	4.2
				Middle	4.5	21.7 21.7	21.7	7.9 7.9	7.9	36.9 37.0	37.0	87.9 87.9	87.9	6.4 6.4	6.4		3.7 3.8	3.8		6.0 5.0	5.5	
				Bottom	8	21.7 21.7	21.7	8.0 7.8	7.9	35.7 37.0	36.4	87.9 87.9	87.9	6.4 6.4	6.4		3.4 3.4	3.4		3.0 3.0	3.0	
13-Apr-09	Fine	Calm	14:56	Surface	1	22.5 22.5	22.5	8.0 8.2	8.1	33.0 34.6	33.8	85.8 85.5	85.7	6.5 6.4	6.5	6.4	4.1 4.2	4.2	4.4	6.0 6.0	6.0	6.3
				Middle	4.5	22.4 22.4	22.4	7.9 8.1	8.0	34.8 35.4	35.1	84.8 84.8	84.8	6.3 6.3	6.3		4.6 4.4	4.5		5.0 5.0	5.0	
				Bottom	8	22.4 22.4	22.4	8.2 8.3	8.3	36.0 33.6	34.8	85.6 85.9	85.8	6.4 6.4	6.4		4.3 4.5	4.4		8.0 8.0	8.0	
15-Apr-09	Sunny	Calm	16:16	Surface	1	22.2 22.3	22.3	7.8 8.1	8.0	36.4 36.3	36.4	89.9 90.3	90.1	6.5 6.5	6.5	6.5	3.7 3.6	3.7	3.4	5.0 4.0	4.5	3.3
				Middle	4.5	22.4 22.4	22.4	7.9 8.0	8.0	36.1 36.1	36.1	89.6 89.2	89.4	6.4 6.4	6.4		3.3 3.3	3.3		<2.5 <2.5	<2.5	
				Bottom	8	22.4 22.4	22.4	8.1 8.1	8.1	36.1 36.1	36.1	88.5 88.5	88.5	6.4 6.4	6.4		3.1 3.1	3.1		<2.5 3.0	2.8	
17-Apr-09	Fine	Calm	17:02	Surface	1	22.3 22.4	22.4	8.1 7.7	7.9	35.7 36.7	36.2	91.8 89.7	90.8	6.5 6.3	6.4	6.5	1.1 1.1	1.1	1.4	3.0 3.0	3.0	3.0
				Middle	4.5	22.2 22.2	22.2	8.2 8.1	8.2	36.9 33.3	35.1	92.4 92.5	92.5	6.5 6.7	6.6		1.3 1.4	1.4		3.0 3.0	3.0	
				Bottom	8	22.1 22.1	22.1	8.1 7.9	8.0	34.7 33.4	34.1	91.8 91.8	91.8	6.6 6.6	6.6		1.5 1.6	1.6		3.0 3.0	3.0	
20-Apr-09	Sunny	Calm	10:16	Surface	1	25.4 25.5	25.5	7.9 8.0	8.0	31.5 31.9	31.7	89.8 89.6	89.7	6.7 6.7	6.7	6.5	3.2 3.5	3.4	3.8	3.0 3.0	3.0	3.7
				Middle	4.5	25.4 25.3	25.4	7.9 7.9	7.9	35.2 35.2	35.2	84.7 83.5	84.1	6.2 6.1	6.2		4.2 4.2	4.2		4.0 4.0	4.0	
				Bottom	8	25.3 25.4	25.4	8.0 8.0	8.0	35.2 35.3	35.3	84.9 85.1	85.0	6.3 6.3	6.3		3.8 3.6	3.7		4.0 4.0	4.0	
22-Apr-09	Fine	Calm	10:59	Surface	1	22.8 22.8	22.8	7.7 7.8	7.8	37.0 36.9	37.0	90.0 89.9	90.0	6.4 6.4	6.4	6.4	2.1 2.1	2.1	2.3	5.0 6.0	5.5	5.2
				Middle	4.5	22.8 22.8	22.8	7.7 7.7	7.7	37.1 37.1	37.1	89.7 89.4	89.6	6.3 6.4	6.4		2.0 2.0	2.0		5.0 5.0	5.0	
				Bottom	8	22.8 22.8	22.8	7.8 7.7	7.8	36.0 36.3	36.2	89.2 89.1	89.2	6.3 6.4	6.4		2.6 2.8	2.7		5.0 5.0	5.0	

Water Quality Monitoring Results at I1 - Mid-Ebb Tide

Date	Weather Condition	Sea Condition**	Sampling Time	Depth (m)		Water Temperature (°C)		pH		Salinity ppt		DO Saturation (%)		Dissolved Oxygen (mg/L)			Turbidity (NTU)			Suspended Solids (mg/L)		
						Value	Average	Value	Average	Value	Average	Value	Average	Value	Average	DA*	Value	Average	DA*	Value	Average	DA*
24-Apr-09	Sunny	Calm	11:44	Surface	1	20.8 20.8	20.8	7.9 8.1	8.0	36.2 36.2	36.2	90.4 90.2	90.3	6.5 6.5	6.5	6.5	4.1 4.2	4.2	3.7	9.0 9.0	9.0	10.7
				Middle	4.5	20.8 20.8	20.8	7.9 7.9	7.9	36.2 36.2	36.2	90.2 90.2	90.2	6.5 6.5	6.5		3.4 3.8	3.6		11.0 11.0		
				Bottom	8	20.8 20.8	20.8	8.2 8.0	8.1	35.0 36.3	35.7	89.8 89.8	89.8	6.5 6.5	6.5		3.2 3.3	3.3		12.0 12.0		
27-Apr-09	Sunny	Calm	13:53	Surface	1	22.6 22.6	22.6	8.1 7.9	8.0	33.1 33.4	33.3	95.8 94.9	95.4	7.1 7.0	7.1	7.0	3.7 3.7	3.7	3.3	9.0 9.0	9.0	8.7
				Middle	4.5	22.6 22.6	22.6	8.2 8.2	8.2	37.0 36.6	36.8	93.6 93.5	93.6	6.8 6.8	6.8		3.3 3.1	3.2		9.0 9.0		
				Bottom	8	22.5 22.5	22.5	8.0 8.2	8.1	36.5 34.9	35.7	93.6 93.6	93.6	6.8 6.9	6.9		2.9 3.3	3.1		8.0 8.0		
29-Apr-09	Sunny	Calm	15:24	Surface	1	22.4 22.5	22.5	7.6 7.6	7.6	34.0 34.9	34.5	88.0 88.0	88.0	6.5 6.5	6.5	6.5	3.7 3.7	3.7	3.2	8.0 8.0	8.0	9.2
				Middle	4.5	22.3 22.3	22.3	7.8 7.8	7.8	36.1 37.0	36.6	88.3 88.2	88.3	6.5 6.5	6.5		2.4 2.2	2.3		11.0 11.0		
				Bottom	8	22.2 22.2	22.2	7.7 7.8	7.8	34.2 36.0	35.1	88.1 88.1	88.1	6.6 6.5	6.6		3.2 3.9	3.6		8.0 9.0		

Remarks: The reporting limit for laboratory analysis of suspended solids is 2.5 mg/L. For the results below the reporting limit, the SS level will be taken as 2.5 mg/L.

* DA: Depth-Averaged

** Calm: Small or no wave; Moderate: Between calm and rough; Rough : White capped or rougher

Water Quality Monitoring Results at I1 - Mid-Flood Tide

Date	Weather Condition	Sea Condition**	Sampling Time	Depth (m)		Water Temperature (°C)		pH		Salinity ppt		DO Saturation (%)		Dissolved Oxygen (mg/L)			Turbidity(NTU)			Suspended Solids (mg/L)		
						Value	Average	Value	Average	Value	Average	Value	Average	Value	Average	DA*	Value	Average	DA*	Value	Average	DA*
1-Apr-09	Sunny	Calm	09:05	Surface	1	21.7 21.7	21.7	8.2 7.8	8.0	36.6 36.6	36.6	99.7 99.6	99.7	6.8 6.8	6.8	6.5	2.5 2.5	2.5	3.9	3.0 4.0	3.5	5.8
				Middle	4.5	21.0 21.0	21.0	7.0 8.0	7.5	35.6 35.6	35.6	89.3 88.6	89.0	6.1 6.1	6.1		4.5 4.5	4.5		7.0 7.0	7.0	
				Bottom	8	20.4 20.3	20.4	8.0 7.5	7.8	35.9 35.9	35.9	89.3 89.3	89.3	6.4 6.4	6.4	5.1 4.5	4.8	7.0 7.0		7.0		
3-Apr-09	Fine	Calm	10:17	Surface	1	21.0 21.0	21.0	7.9 7.8	7.9	37.0 37.0	37.0	95.6 93.4	94.5	6.9 6.7	6.8	6.7	2.4 2.1	2.3	3.0	15.0 15.0	15.0	11.3
				Middle	4.5	20.9 20.9	20.9	7.8 7.8	7.8	37.0 37.0	37.0	91.6 90.7	91.2	6.6 6.5	6.6		3.0 3.1	3.1		8.0 8.0	8.0	
				Bottom	8	20.9 20.9	20.9	8.0 7.7	7.9	37.0 37.0	37.0	89.4 88.9	89.2	6.4 6.4	6.4	3.4 3.5	3.5	11.0 11.0		11.0		
6-Apr-09	Cloudy	Calm	15:56	Surface	1	21.1 21.1	21.1	7.7 7.7	7.7	36.9 36.9	36.9	88.5 88.3	88.4	6.4 6.4	6.4	6.4	3.0 2.8	2.9	2.3	9.0 9.0	9.0	7.3
				Middle	4.5	21.1 21.1	21.1	7.9 7.8	7.9	36.1 36.5	36.3	87.9 87.7	87.8	6.4 6.4	6.4		2.1 2.0	2.1		7.0 7.0	7.0	
				Bottom	8	21.1 21.1	21.1	7.9 8.1	8.0	36.9 36.9	36.9	87.3 87.3	87.3	6.3 6.3	6.3	2.0 2.0	2.0	6.0 6.0		6.0		
8-Apr-09	Fine	Calm	17:09	Surface	1	21.2 21.2	21.2	8.0 8.0	8.0	33.3 36.5	34.9	92.8 92.8	92.8	6.7 6.7	6.7	6.7	4.7 4.8	4.8	4.5	6.0 6.0	6.0	4.2
				Middle	4.5	21.2 21.2	21.2	7.7 7.8	7.8	36.6 35.6	36.1	92.8 92.8	92.8	6.7 6.7	6.7		4.6 4.6	4.6		6.0 6.0	6.0	
				Bottom	8	21.2 21.2	21.2	7.9 7.8	7.9	36.8 34.6	35.7	91.1 91.1	91.1	6.6 6.6	6.6	4.2 4.0	4.1	6.0 6.0		6.0		
10-Apr-09	Sunny	Calm	17:44	Surface	1	21.7 21.7	21.7	7.7 7.6	7.7	37.0 37.0	37.0	89.4 89.3	89.4	6.5 6.5	6.5	6.7	3.8 3.8	3.8	3.8	3.0 3.0	3.0	3.2
				Middle	4.5	21.6 21.7	21.7	7.9 7.7	7.8	37.0 36.8	36.9	92.9 92.4	92.7	6.8 6.7	6.8		3.9 3.8	3.9		4.0 3.0	3.5	
				Bottom	8	21.7 21.7	21.7	7.8 8.1	8.0	36.9 36.9	36.9	89.8 89.7	89.8	6.5 6.5	6.5	3.9 3.7	3.8	3.0 3.0		3.0		
13-Apr-09	Fine	Calm	08:34	Surface	1	22.4 22.5	22.5	7.9 8.0	8.0	32.6 35.2	33.9	94.4 91.8	93.1	7.0 6.9	7.0	6.8	4.0 4.1	4.1	3.8	7.0 6.0	6.5	6.5
				Middle	4.5	22.4 22.4	22.4	8.5 8.0	8.3	35.4 34.7	35.1	87.5 87.5	87.5	6.5 6.5	6.5		3.9 3.9	3.9		5.0 5.0	5.0	
				Bottom	8	22.4 22.4	22.4	8.0 8.6	8.3	35.9 33.8	34.9	85.0 84.9	85.0	6.3 6.4	6.4	3.6 3.4	3.5	8.0 8.0		8.0		
15-Apr-09	Sunny	Calm	08:35	Surface	1	21.2 21.3	21.3	7.6 7.8	7.7	37.3 37.2	37.3	98.2 100.4	99.3	7.2 7.4	7.3	7.2	2.9 2.9	2.9	3.4	<2.5 <2.5	<2.5	2.6
				Middle	4.5	22.2 22.3	22.3	8.0 7.7	7.9	36.4 36.3	36.4	96.3 94.8	95.6	7.0 6.9	7.0		3.1 3.3	3.2		<2.5 <2.5	<2.5	
				Bottom	8	22.4 22.4	22.4	7.7 8.2	8.0	36.2 36.2	36.2	90.7 89.8	90.3	6.5 6.5	6.5	4.1 4.3	4.2	<2.5 3.0		2.8		
17-Apr-09	Sunny	Calm	09:31	Surface	1	22.7 22.5	22.6	8.0 7.9	8.0	36.4 36.5	36.5	90.8 90.7	90.8	6.4 6.4	6.4	6.4	0.9 0.9	0.9	0.9	6.0 6.0	6.0	4.3
				Middle	4.5	22.3 22.3	22.3	8.2 8.1	8.2	36.7 36.7	36.7	90.7 90.7	90.7	6.4 6.4	6.4		0.8 0.8	0.8		3.0 3.0	3.0	
				Bottom	8	22.2 22.2	22.2	7.8 8.1	8.0	36.7 36.7	36.7	99.6 99.6	99.6	7.0 7.0	7.0	0.9 0.9	0.9	4.0 4.0		4.0		
20-Apr-09	Sunny	Calm	15:19	Surface	1	25.2 25.2	25.2	8.0 7.8	7.9	32.4 35.0	33.7	85.6 85.4	85.5	6.5 6.4	6.5	6.5	3.0 3.0	3.0	3.4	4.0 4.0	4.0	5.0
				Middle	4.5	25.2 25.2	25.2	8.0 7.9	8.0	35.1 34.3	34.7	84.9 85.1	85.0	6.3 6.4	6.4		3.4 3.4	3.4		6.0 6.0	6.0	
				Bottom	8	25.3 25.3	25.3	8.0 8.2	8.1	35.0 35.2	35.1	83.7 84.2	84.0	6.2 6.2	6.2	3.6 3.8	3.7	5.0 5.0		5.0		

Water Quality Monitoring Results at I1 - Mid-Flood Tide

Date	Weather Condition	Sea Condition**	Sampling Time	Depth (m)		Water Temperature (°C)		pH		Salinity ppt		DO Saturation (%)		Dissolved Oxygen (mg/L)			Turbidity(NTU)			Suspended Solids (mg/L)		
						Value	Average	Value	Average	Value	Average	Value	Average	Value	Average	DA*	Value	Average	DA*	Value	Average	DA*
22-Apr-09	Fine	Calm	16:56	Surface	1	22.8 22.8	22.8	7.9 7.9	7.9	36.1 36.1	36.1	91.3 91.5	91.4	6.4 6.4	6.4	6.4	4.0 3.8	3.9	4.0	7.0 7.0	7.0	5.7
				Middle	4.5	22.8 22.8	22.8	8.0 8.0	8.0	37.1 37.1	37.1	91.5 91.5	91.5	6.4 6.4	6.4		3.7 3.6	3.7		6.0 6.0	6.0	
				Bottom	8	22.8 22.8	22.8	7.9 8.0	8.0	37.2 35.6	36.4	90.7 90.3	90.5	6.3 6.3	6.3		4.3 4.3	4.3		4.0 4.0	4.0	
24-Apr-09	Fine	Calm	17:03	Surface	1	20.8 20.8	20.8	7.9 7.8	7.9	36.2 36.2	36.2	90.3 90.4	90.4	6.5 6.5	6.5	6.6	3.8 3.7	3.8	3.8	12.0 12.0	12.0	9.2
				Middle	4.5	20.7 20.8	20.8	8.3 8.1	8.2	36.2 36.1	36.2	92.4 91.9	92.2	6.7 6.6	6.7		3.9 3.8	3.9		8.0 8.0	8.0	
				Bottom	8	20.8 20.8	20.8	7.9 8.4	8.2	36.1 36.1	36.1	90.3 90.2	90.3	6.5 6.5	6.5		3.7 3.7	3.7		7.0 8.0	7.5	
27-Apr-09	Sunny	Calm	07:58	Surface	1	22.5 22.5	22.5	7.7 7.9	7.8	36.4 36.3	36.4	93.5 93.4	93.5	6.8 6.8	6.8	6.9	4.3 4.2	4.3	3.8	12.0 12.0	12.0	10.3
				Middle	4.5	22.5 22.5	22.5	8.0 7.9	8.0	36.5 36.4	36.5	93.9 93.3	93.6	6.9 6.8	6.9		3.6 3.6	3.6		10.0 10.0	10.0	
				Bottom	8	22.5 22.5	22.5	8.2 8.3	8.3	37.1 35.1	36.1	93.0 93.0	93.0	6.8 6.8	6.8		3.7 3.3	3.5		9.0 9.0	9.0	
29-Apr-09	Sunny	Calm	08:04	Surface	1	22.5 22.5	22.5	7.7 7.6	7.7	34.4 33.5	34.0	90.5 89.6	90.1	6.7 6.7	6.7	6.7	3.4 3.6	3.5	3.8	6.0 6.0	6.0	6.5
				Middle	4.5	22.4 22.4	22.4	7.9 7.8	7.9	34.1 37.0	35.6	89.2 89.1	89.2	6.6 6.5	6.6		3.5 3.6	3.6		7.0 7.0	7.0	
				Bottom	8	22.3 22.3	22.3	7.7 7.6	7.7	35.1 35.1	35.1	88.8 88.7	88.8	6.6 6.6	6.6		4.0 4.3	4.2		6.0 7.0	6.5	

Remarks: The reporting limit for laboratory analysis of suspended solids is 2.5 mg/L. For the results below the reporting limit, the SS level will be taken as 2.5 mg/L.

* DA: Depth-Averaged

** Calm: Small or no wave; Moderate: Between calm and rough; Rough : White capped or rougher

Water Quality Monitoring Results at I2 - Mid-Ebb Tide

Date	Weather Condition	Sea Condition**	Sampling Time	Depth (m)		Water Temperature (°C)		pH		Salinity ppt		DO Saturation (%)		Dissolved Oxygen (mg/L)			Turbidity (NTU)			Suspended Solids (mg/L)			
						Value	Average	Value	Average	Value	Average	Value	Average	Value	Average	DA*	Value	Average	DA*	Value	Average	DA*	
1-Apr-09	Sunny	Calm	16:06	Surface	1	22.7 22.7	22.7	8.2 7.3	7.8	36.9 37.0	37.0	103.4 102.7	103.1	7.1 7.0	7.1	6.5	3.1 3.1	3.1	3.5	5.0 6.0	5.5	6.5	
				Middle	4.5	22.0 21.9	22.0	7.9 7.7	7.8	35.5 35.5	35.5	87.1 86.2	86.7	5.9 5.9	5.9		6.5	3.2 3.2		3.2	7.0 7.0		7.0
				Bottom	8	21.7 21.7	21.7	7.5 7.8	7.7	35.7 35.7	35.7	90.5 89.5	90.0	6.4 6.3	6.4		6.4	4.0 4.6		4.3	7.0 7.0		7.0
6-Apr-09	Cloudy	Calm	10:56	Surface	1	21.1 21.1	21.1	7.7 7.8	7.8	37.0 36.9	37.0	89.1 88.6	88.9	6.4 6.4	6.4	6.4	2.5 2.5	2.5	3.3	8.0 8.0	8.0	7.8	
				Middle	4.5	21.1 21.1	21.1	7.8 7.7	7.8	36.9 36.9	36.9	87.8 87.8	87.8	6.3 6.3	6.3		6.4	3.8 3.9		3.9	8.0 9.0		8.5
				Bottom	8	21.0 21.0	21.0	7.9 7.8	7.9	37.0 35.0	36.0	87.1 87.1	87.1	6.3 6.3	6.3		6.3	3.5 3.5		3.5	7.0 7.0		7.0
8-Apr-09	Sunny	Calm	11:58	Surface	1	21.0 21.0	21.0	7.5 7.5	7.5	33.7 36.5	35.1	86.8 86.8	86.8	6.3 6.3	6.3	6.4	7.7 7.7	7.7	7.9	6.0 6.0	6.0	4.7	
				Middle	4.5	21.0 21.0	21.0	7.8 7.6	7.7	36.6 35.7	36.2	88.2 88.3	88.3	6.4 6.4	6.4		6.4	8.2 8.2		8.2	4.0 4.0		4.0
				Bottom	8	21.1 21.1	21.1	7.8 7.9	7.9	36.5 36.6	36.6	90.2 90.2	90.2	6.2 6.2	6.2		6.2	7.7 7.6		7.7	4.0 4.0		4.0
10-Apr-09	Sunny	Calm	12:40	Surface	1	21.6 21.7	21.7	7.7 7.8	7.8	36.7 36.2	36.5	88.7 87.5	88.1	6.5 6.4	6.5	6.5	2.8 2.8	2.8	3.2	3.0 3.0	3.0	3.0	
				Middle	4.5	21.7 21.7	21.7	8.0 8.0	8.0	37.1 37.1	37.1	86.8 87.5	87.2	6.3 6.4	6.4		6.4	3.8 3.7		3.8	3.0 3.0		3.0
				Bottom	8	21.7 21.7	21.7	7.7 7.9	7.8	37.2 37.2	37.2	88.4 88.6	88.5	6.4 6.4	6.4		6.4	3.2 3.0		3.1	3.0 3.0		3.0
13-Apr-09	Fine	Calm	14:58	Surface	1	22.4 22.4	22.4	8.4 8.1	8.3	33.0 35.9	34.5	85.4 85.2	85.3	6.4 6.3	6.4	6.4	4.6 4.6	4.6	4.4	8.0 8.0	8.0	5.7	
				Middle	4	22.5 22.5	22.5	8.5 8.1	8.3	35.9 35.0	35.5	84.7 84.9	84.8	6.3 6.3	6.3		6.4	5.0 4.6		4.8	5.0 5.0		5.0
				Bottom	7	22.4 22.4	22.4	8.5 8.0	8.3	35.9 35.8	35.9	85.5 86.0	85.8	6.3 6.4	6.4		6.4	3.8 3.8		3.8	4.0 4.0		4.0
15-Apr-09	Sunny	Calm	15:54	Surface	1	22.3 22.3	22.3	8.2 8.0	8.1	36.3 36.3	36.3	93.5 93.5	93.5	6.8 6.8	6.8	6.7	2.9 2.9	2.9	3.0	5.0 5.0	5.0	4.0	
				Middle	4.5	22.4 22.4	22.4	8.2 8.0	8.1	36.1 36.1	36.1	91.0 90.3	90.7	6.6 6.5	6.6		6.4	2.8 2.8		2.8	4.0 4.0		4.0
				Bottom	8	22.4 22.4	22.4	8.3 7.9	8.1	36.1 36.1	36.1	88.7 88.3	88.5	6.4 6.4	6.4		6.4	3.2 3.3		3.3	3.0 3.0		3.0
17-Apr-09	Fine	Calm	17:05	Surface	1	22.1 22.1	22.1	7.8 7.7	7.8	36.2 36.1	36.2	89.5 89.5	89.5	6.4 6.4	6.4	6.4	3.5 3.4	3.5	2.5	3.0 3.0	3.0	4.0	
				Middle	4.5	22.2 22.2	22.2	7.8 8.2	8.0	35.9 36.3	36.1	90.2 90.8	90.5	6.4 6.4	6.4		6.4	2.1 2.4		2.3	3.0 3.0		3.0
				Bottom	8	22.2 22.2	22.2	8.0 8.0	8.0	35.8 33.1	34.5	91.4 91.8	91.6	6.5 6.6	6.6		6.6	1.6 1.7		1.7	6.0 6.0		6.0
20-Apr-09	Sunny	Calm	10:17	Surface	1	25.4 25.5	25.5	8.1 7.9	8.0	31.9 35.0	33.5	87.2 86.4	86.8	6.6 6.4	6.5	6.5	4.4 4.1	4.3	4.0	6.0 6.0	6.0	6.0	
				Middle	4.5	25.4 25.4	25.4	8.2 7.9	8.1	35.1 34.2	34.7	85.6 85.7	85.7	6.4 6.4	6.4		6.4	3.8 3.7		3.8	6.0 6.0		6.0
				Bottom	8	25.4 25.4	25.4	8.1 7.9	8.0	35.3 33.3	34.3	83.8 83.9	83.9	6.2 6.3	6.3		6.3	3.9 3.7		3.8	6.0 6.0		6.0
22-Apr-09	Fine	Calm	11:01	Surface	1	22.8 22.8	22.8	7.8 7.7	7.8	35.4 34.5	35.0	89.4 89.6	89.5	6.4 6.3	6.4	6.4	2.1 2.1	2.1	2.1	6.0 6.0	6.0	5.3	
				Middle	4.5	22.8 22.8	22.8	8.0 7.8	7.9	37.1 33.4	35.3	89.4 88.9	89.2	6.4 6.3	6.4		6.4	2.0 2.0		2.0	5.0 5.0		5.0
				Bottom	8	22.8 22.8	22.8	8.0 7.8	7.9	35.1 36.2	35.7	88.6 88.6	88.6	6.3 6.3	6.3		6.3	2.2 2.2		2.2	5.0 5.0		5.0

Water Quality Monitoring Results at I2 - Mid-Ebb Tide

Date	Weather Condition	Sea Condition**	Sampling Time	Depth (m)		Water Temperature (°C)		pH		Salinity ppt		DO Saturation (%)		Dissolved Oxygen (mg/L)			Turbidity (NTU)			Suspended Solids (mg/L)		
						Value	Average	Value	Average	Value	Average	Value	Average	Value	Average	DA*	Value	Average	DA*	Value	Average	DA*
24-Apr-09	Sunny	Calm	11:48	Surface	1	21.0 20.8	20.9	8.2 7.9	8.1	35.9 35.5	35.7	90.4 89.1	89.8	6.5 6.5	6.5	6.5	4.2 4.4	4.3	3.7	8.0 9.0	8.5	10.5
				Middle	4.5	20.8 20.8	20.8	8.2 8.0	8.1	36.4 36.4	36.4	88.4 89.1	88.8	6.4 6.4	6.4		3.8 3.6	3.7		12.0 12.0	12.0	
				Bottom	8	20.8 20.8	20.8	8.1 7.9	8.0	36.5 36.5	36.5	90.1 90.3	90.2	6.5 6.5	6.5		3.2 2.8	3.0		11.0 11.0	11.0	
27-Apr-09	Sunny	Calm	13:54	Surface	1	22.6 22.6	22.6	8.1 8.2	8.2	36.4 35.9	36.2	93.5 93.2	93.4	6.8 6.8	6.8	6.8	3.6 3.5	3.6	3.7	9.0 9.0	9.0	9.2
				Middle	4.5	22.6 22.6	22.6	8.0 8.0	8.0	36.3 36.3	36.3	93.0 93.0	93.0	6.8 6.8	6.8		3.9 4.0	4.0		9.0 9.0	9.0	
				Bottom	8	22.5 22.5	22.5	8.2 8.1	8.2	37.1 36.5	36.8	93.0 93.0	93.0	6.8 6.8	6.8		3.5 3.5	3.5		10.0 9.0	9.5	
29-Apr-09	Sunny	Calm	15:25	Surface	1	22.4 22.4	22.4	7.6 7.8	7.7	35.9 36.0	36.0	88.0 88.2	88.1	6.5 6.5	6.5	6.5	3.5 3.5	3.5	3.6	8.0 8.0	8.0	8.5
				Middle	4.5	22.3 22.3	22.3	7.8 7.7	7.8	36.7 36.3	36.5	88.4 88.4	88.4	6.5 6.5	6.5		2.9 2.8	2.9		7.0 7.0	7.0	
				Bottom	8	22.2 22.2	22.2	7.9 7.9	7.9	36.3 36.3	36.3	88.2 88.2	88.2	6.5 6.5	6.5		3.9 4.6	4.3		11.0 10.0	10.5	

Remarks: The reporting limit for laboratory analysis of suspended solids is 2.5 mg/L. For the results below the reporting limit, the SS level will be taken as 2.5 mg/L.

* DA: Depth-Averaged

** Calm: Small or no wave; Moderate: Between calm and rough; Rough: White capped or rougher

Water Quality Monitoring Results at I2 - Mid-Flood Tide

Date	Weather Condition	Sea Condition**	Sampling Time	Depth (m)		Water Temperature (°C)		pH		Salinity ppt		DO Saturation (%)		Dissolved Oxygen (mg/L)			Turbidity(NTU)			Suspended Solids (mg/L)		
						Value	Average	Value	Average	Value	Average	Value	Average	Value	Average	DA*	Value	Average	DA*	Value	Average	DA*
1-Apr-09	Sunny	Calm	08:59	Surface	1	21.7 21.7	21.7	8.2 8.3	8.3	36.2 36.3	36.3	102.7 102.0	102.4	7.0 7.0	7.0	6.5	3.9 3.9	3.9	3.9	7.0 7.0	7.0	8.5
				Middle	4.5	20.9 20.9	20.9	7.8 7.8	7.8	36.2 36.2	36.2	88.6 87.1	87.9	6.0 5.9	6.0		3.9 3.8	3.9		8.0 8.0	8.0	
				Bottom	8	20.7 20.7	20.7	8.3 7.3	7.8	36.5 36.6	36.6	92.5 91.3	91.9	6.6 6.5	6.6		3.8 3.8	3.8		11.0 10.0	10.5	
3-Apr-09	Fine	Calm	10:14	Surface	1	20.9 20.9	20.9	7.9 7.8	7.9	34.3 33.0	33.7	96.7 96.7	96.7	7.0 7.0	7.0	7.0	3.2 3.2	3.2	2.9	4.0 5.0	4.5	10.3
				Middle	4.5	20.9 20.9	20.9	8.0 7.7	7.9	36.5 37.0	36.8	97.6 96.7	97.2	7.0 7.0	7.0		2.8 3.0	2.9		15.0 14.0	14.5	
				Bottom	8	20.9 20.9	20.9	7.9 8.0	8.0	37.0 36.5	36.8	96.8 97.3	97.1	7.0 7.0	7.0		2.6 2.6	2.6		12.0 12.0	12.0	
6-Apr-09	Cloudy	Calm	15:53	Surface	1	21.1 21.1	21.1	7.8 7.7	7.8	36.9 36.9	36.9	89.3 88.7	89.0	6.5 6.4	6.5	6.5	2.1 2.3	2.2	3.5	8.0 7.0	7.5	7.5
				Middle	4.5	21.1 21.1	21.1	7.6 7.6	7.6	36.1 36.2	36.2	88.3 88.2	88.3	6.4 6.4	6.4		3.0 3.3	3.2		7.0 7.0	7.0	
				Bottom	8	21.1 21.1	21.1	7.7 7.7	7.7	37.0 36.2	36.6	87.3 87.1	87.2	6.3 6.3	6.3		5.1 5.3	5.2		8.0 8.0	8.0	
8-Apr-09	Fine	Calm	17:07	Surface	1	21.2 21.3	21.3	7.9 7.8	7.9	32.8 33.3	33.1	90.3 90.3	90.3	6.7 6.7	6.7	6.7	5.4 5.1	5.3	4.6	5.0 6.0	5.5	3.0
				Middle	4.5	21.2 21.1	21.2	7.9 7.8	7.9	36.6 36.7	36.7	90.3 90.3	90.3	6.7 6.7	6.7		4.7 4.5	4.6		6.0 6.0	6.0	
				Bottom	8	21.2 21.1	21.2	8.0 7.7	7.9	36.7 36.8	36.8	90.3 90.3	90.3	6.7 6.7	6.7		4.1 3.9	4.0		5.0 5.0	5.0	
10-Apr-09	Sunny	Calm	17:43	Surface	1	21.7 21.7	21.7	7.6 7.6	7.6	37.0 37.0	37.0	88.4 88.5	88.5	6.4 6.4	6.4	6.6	3.8 4.2	4.0	3.9	3.0 3.0	3.0	4.0
				Middle	4.5	21.6 21.7	21.7	7.5 7.6	7.6	36.8 36.8	36.8	93.3 92.4	92.9	6.8 6.7	6.8		3.8 3.8	3.8		5.0 5.0	5.0	
				Bottom	8	21.7 21.7	21.7	7.6 7.5	7.6	36.9 36.9	36.9	90.3 90.1	90.2	6.6 6.5	6.6		3.8 3.9	3.9		4.0 4.0	4.0	
13-Apr-09	Fine	Calm	08:33	Surface	1	22.4 22.5	22.5	8.0 7.9	8.0	32.1 32.6	32.4	87.0 86.2	86.6	6.6 6.4	6.5	6.5	4.2 4.3	4.3	3.8	4.0 4.0	4.0	5.5
				Middle	4.5	22.4 22.3	22.4	7.9 8.1	8.0	35.9 36.0	36.0	85.4 85.5	85.5	6.3 6.4	6.4		3.8 3.8	3.8		9.0 9.0	9.0	
				Bottom	8	22.4 22.3	22.4	8.0 8.0	8.0	36.0 35.6	35.8	85.6 85.7	85.7	6.3 6.4	6.4		3.5 3.3	3.4		3.0 4.0	3.5	
15-Apr-09	Sunny	Calm	08:29	Surface	1	22.3 22.4	22.4	7.6 7.7	7.7	36.1 36.1	36.1	88.8 88.5	88.7	6.4 6.4	6.4	6.4	2.8 2.7	2.8	3.0	3.0 3.0	3.0	3.0
				Middle	4.5	22.4 22.4	22.4	7.7 7.6	7.7	36.0 36.0	36.0	88.0 88.0	88.0	6.3 6.3	6.3		2.8 2.8	2.8		3.0 3.0	3.0	
				Bottom	8	22.4 22.4	22.4	7.6 7.7	7.7	36.0 36.1	36.1	87.1 87.2	87.2	6.3 6.3	6.3		3.4 3.5	3.5		3.0 3.0	3.0	
17-Apr-09	Sunny	Calm	09:30	Surface	1	22.5 22.5	22.5	8.1 8.0	8.1	36.5 36.5	36.5	90.8 90.8	90.8	6.4 6.5	6.5	6.5	1.3 1.3	1.3	1.6	3.0 3.0	3.0	3.0
				Middle	4.5	22.2 22.2	22.2	7.9 8.1	8.0	35.3 36.4	35.9	90.4 90.4	90.4	6.4 6.4	6.4		1.3 1.3	1.3		3.0 3.0	3.0	
				Bottom	8	22.1 22.1	22.1	8.0 7.7	7.9	36.4 36.1	36.3	89.4 89.7	89.6	6.3 6.3	6.3		1.9 2.2	2.1		3.0 3.0	3.0	
20-Apr-09	Sunny	Calm	15:18	Surface	1	25.3 25.3	25.3	7.9 7.9	7.9	32.3 34.0	33.2	84.2 84.3	84.3	6.4 6.3	6.4	6.4	2.8 2.8	2.8	3.4	4.0 4.0	4.0	4.7
				Middle	4.5	25.3 25.3	25.3	7.8 7.9	7.9	33.7 34.7	34.2	84.6 85.0	84.8	6.4 6.4	6.4		3.8 3.8	3.8		3.0 3.0	3.0	
				Bottom	8	25.3 25.3	25.3	7.9 7.8	7.9	35.1 32.9	34.0	84.0 83.9	84.0	6.2 6.3	6.3		3.5 3.5	3.5		7.0 7.0	7.0	

Water Quality Monitoring Results at I2 - Mid-Flood Tide

Date	Weather Condition	Sea Condition**	Sampling Time	Depth (m)		Water Temperature (°C)		pH		Salinity ppt		DO Saturation (%)		Dissolved Oxygen (mg/L)			Turbidity(NTU)			Suspended Solids (mg/L)		
						Value	Average	Value	Average	Value	Average	Value	Average	Value	Average	DA*	Value	Average	DA*	Value	Average	DA*
22-Apr-09	Fine	Calm	16:54	Surface	1	22.8 22.8	22.8	8.0 7.8	7.9	37.0 36.9	37.0	90.5 91.1	90.8	6.3 6.3	6.3	6.4	4.7 4.9	4.8	4.6	7.0 7.0	7.0	6.3
				Middle	4.5	22.8 22.8	22.8	8.0 7.8	7.9	37.2 37.2	37.2	92.7 92.5	92.6	6.4 6.4	6.4		4.1 4.0	4.1		6.0 6.0	6.0	
				Bottom	8	22.8 22.8	22.8	7.8 7.8	7.8	37.2 34.4	35.8	91.7 91.3	91.5	6.4 6.5	6.5		4.8 5.1	5.0		6.0 6.0	6.0	
24-Apr-09	Fine	Calm	17:02	Surface	1	20.8 20.8	20.8	7.8 7.9	7.9	36.3 36.2	36.3	90.2 90.3	90.3	6.5 6.5	6.5	6.7	2.9 3.3	3.1	3.6	9.0 9.0	9.0	11.3
				Middle	4.5	20.8 20.8	20.8	7.8 8.0	7.9	36.1 36.1	36.1	95.3 94.4	94.9	6.9 6.8	6.9		3.8 3.8	3.8		11.0 11.0	11.0	
				Bottom	8	20.8 20.8	20.8	7.9 7.9	7.9	36.2 36.2	36.2	92.2 92.0	92.1	6.7 6.6	6.7		3.7 3.9	3.8		14.0 14.0	14.0	
27-Apr-09	Sunny	Calm	07:56	Surface	1	22.6 22.6	22.6	7.6 7.7	7.7	37.0 34.1	35.6	96.3 96.1	96.2	7.0 7.1	7.1	7.0	3.6 3.9	3.8	3.8	10.0 11.0	10.5	9.5
				Middle	4.5	22.5 22.5	22.5	8.0 7.7	7.9	37.0 36.7	36.9	95.1 95.0	95.1	6.9 6.9	6.9		4.0 4.2	4.1		8.0 8.0	8.0	
				Bottom	8	22.5 22.5	22.5	7.8 8.0	7.9	33.5 36.9	35.2	94.5 94.4	94.5	7.0 6.9	7.0		3.6 3.6	3.6		10.0 10.0	10.0	
29-Apr-09	Sunny	Calm	08:00	Surface	1	22.7 22.6	22.7	7.4 7.7	7.6	36.4 36.9	36.7	93.9 92.9	93.4	6.9 6.8	6.9	6.9	2.9 2.9	2.9	3.0	7.0 7.0	7.0	6.7
				Middle	4.5	22.3 22.3	22.3	7.6 7.6	7.6	37.0 37.0	37.0	92.8 92.8	92.8	6.8 6.8	6.8		3.0 2.8	2.9		6.0 6.0	6.0	
				Bottom	8	22.3 22.3	22.3	7.7 7.5	7.6	36.9 37.0	37.0	92.4 92.5	92.5	6.8 6.8	6.8		2.9 3.2	3.1		7.0 7.0	7.0	

Remarks: The reporting limit for laboratory analysis of suspended solids is 2.5 mg/L. For the results below the reporting limit, the SS level will be taken as 2.5 mg/L.

* DA: Depth-Averaged

** Calm: Small or no wave; Moderate: Between calm and rough; Rough : White capped or rougher

Water Quality Monitoring Results at Intake A - Mid-Ebb Tide

Date	Weather Condition	Sea Condition**	Sampling Time	Depth (m)		Water Temperature (°C)		pH		Salinity ppt		DO Saturation (%)		Dissolved Oxygen (mg/L)			Turbidity (NTU)			Suspended Solids (mg/L)		
						Value	Average	Value	Average	Value	Average	Value	Average	Value	Average	DA*	Value	Average	DA*	Value	Average	DA*
1-Apr-09	Sunny	Calm	16:18	Surface	1	22.7 22.6	22.7	7.3 8.3	7.8	35.9 36.0	36.0	101.5 100.9	101.2	6.9 6.9	6.9	6.6	3.1 3.1	3.1	3.6	6.0 6.0	6.0	7.2
				Middle	5	22.1 22.1	22.1	7.9 7.7	7.8	35.6 35.6	35.6	90.5 90.5	90.5	6.2 6.2	6.2		3.0 3.0	3.0		7.0 7.0	7.0	
				Bottom	9	21.6 21.6	21.6	7.6 7.6	7.6	35.7 35.7	35.7	88.1 88.2	88.2	6.2 6.2	6.2		4.3 5.2	4.8		9.0 8.0	8.5	
6-Apr-09	Cloudy	Calm	11:00	Surface	1	21.2 21.2	21.2	7.8 7.7	7.8	36.9 36.8	36.9	90.2 90.3	90.3	6.5 6.5	6.5	6.5	2.3 2.3	2.3	2.7	7.0 7.0	7.0	7.7
				Middle	5	21.1 21.1	21.1	7.9 8.1	8.0	36.9 36.9	36.9	89.4 89.5	89.5	6.4 6.4	6.4		3.1 3.3	3.2		8.0 8.0	8.0	
				Bottom	9	21.0 21.0	21.0	7.8 7.9	7.9	37.0 37.0	37.0	87.7 87.5	87.6	6.3 6.3	6.3		2.5 2.4	2.5		8.0 8.0	8.0	
8-Apr-09	Sunny	Calm	12:04	Surface	1	21.1 21.1	21.1	8.0 7.8	7.9	33.4 34.7	34.1	89.7 89.7	89.7	6.5 6.5	6.5	6.4	6.2 6.3	6.3	7.1	3.0 3.0	3.0	6.0
				Middle	5	21.1 21.1	21.1	7.8 7.7	7.8	36.5 36.5	36.5	91.2 91.2	91.2	6.2 6.2	6.2		7.2 7.2	7.2		7.0 7.0	7.0	
				Bottom	9	21.1 21.1	21.1	7.6 7.6	7.6	36.6 34.4	35.5	91.2 91.2	91.2	6.2 6.2	6.2		7.7 7.7	7.7		8.0 8.0	8.0	
10-Apr-09	Sunny	Calm	12:51	Surface	1	21.7 21.7	21.7	7.9 7.9	7.9	36.8 36.8	36.8	90.3 88.1	89.2	6.6 6.4	6.5	6.4	3.2 3.4	3.3	2.7	3.0 3.0	3.0	3.0
				Middle	5	21.7 21.7	21.7	7.8 7.8	7.8	37.0 37.0	37.0	86.7 86.7	86.7	6.3 6.3	6.3		2.6 2.7	2.7		3.0 3.0	3.0	
				Bottom	9	21.7 21.7	21.7	7.8 7.7	7.8	37.1 37.1	37.1	87.2 87.5	87.4	6.3 6.4	6.4		2.2 2.2	2.2		3.0 3.0	3.0	
13-Apr-09	Fine	Calm	15:05	Surface	1	22.4 22.4	22.4	8.7 7.8	8.3	32.7 34.0	33.4	96.7 95.9	96.3	7.1 7.1	7.1	7.0	3.3 3.4	3.4	3.0	6.0 6.0	6.0	5.7
				Middle	5	22.5 22.5	22.5	8.4 8.6	8.5	35.9 35.9	35.9	93.6 93.3	93.5	6.9 6.9	6.9		3.1 3.1	3.1		3.0 3.0	3.0	
				Bottom	9	22.4 22.4	22.4	8.0 8.0	8.0	35.9 33.9	34.9	92.9 92.8	92.9	6.9 6.8	6.9		2.6 2.6	2.6		8.0 8.0	8.0	
15-Apr-09	Sunny	Calm	15:41	Surface	1	21.9 22.1	22.0	8.3 7.8	8.1	36.4 36.2	36.3	90.6 91.5	91.1	6.6 6.6	6.6	6.6	2.8 2.9	2.9	3.1	5.0 6.0	5.5	3.8
				Middle	5	22.4 22.4	22.4	8.3 8.4	8.4	35.9 35.9	35.9	89.5 88.9	89.2	6.5 6.4	6.5		3.1 3.2	3.2		<2.5 3.0	2.8	
				Bottom	9	22.4 22.4	22.4	7.9 8.0	8.0	36.0 36.0	36.0	87.9 87.9	87.9	6.3 6.3	6.3		3.2 3.2	3.2		3.0 3.0	3.0	
17-Apr-09	Fine	Calm	17:17	Surface	1	22.2 22.2	22.2	7.8 7.7	7.8	35.9 35.8	35.9	92.0 92.0	92.0	6.5 6.5	6.5	6.5	1.2 1.3	1.3	1.7	3.0 4.0	3.5	3.5
				Middle	5	22.2 22.2	22.2	8.0 7.9	8.0	36.1 35.2	35.7	91.9 91.9	91.9	6.5 6.5	6.5		1.5 1.7	1.6		4.0 4.0	4.0	
				Bottom	9	22.1 22.1	22.1	8.0 8.1	8.1	33.3 36.3	34.8	91.3 90.6	91.0	6.6 6.4	6.5		2.1 2.2	2.2		3.0 3.0	3.0	
20-Apr-09	Sunny	Calm	10:23	Surface	1	25.4 25.4	25.4	8.0 7.9	8.0	35.0 35.0	35.0	92.8 92.0	92.4	6.8 6.7	6.8	6.7	1.7 1.7	1.7	2.2	<2.5 3.0	2.8	3.1
				Middle	4.5	25.3 25.3	25.3	8.2 8.1	8.2	31.6 31.7	31.7	89.7 89.4	89.6	6.5 6.5	6.5		2.2 2.5	2.4		4.0 3.0	3.5	
				Bottom	8	25.3 25.3	25.3	7.8 8.0	7.9	34.8 35.3	35.1	89.0 88.9	89.0	6.5 6.5	6.5		2.4 2.7	2.6		3.0 3.0	3.0	
22-Apr-09	Fine	Calm	11:06	Surface	1	22.8 22.8	22.8	8.0 7.8	7.9	36.7 37.0	36.9	90.2 90.5	90.4	6.4 6.4	6.4	6.4	2.1 2.0	2.1	2.3	3.0 4.0	3.5	4.8
				Middle	5	22.8 22.8	22.8	8.0 8.0	8.0	36.9 36.9	36.9	90.5 90.2	90.4	6.4 6.4	6.4		2.2 2.4	2.3		6.0 6.0	6.0	
				Bottom	9	22.8 22.8	22.8	7.7 7.7	7.7	37.0 36.9	37.0	88.4 90.7	89.6	6.3 6.5	6.4		2.6 2.6	2.6		5.0 5.0	5.0	

Water Quality Monitoring Results at Intake A - Mid-Ebb Tide

Date	Weather Condition	Sea Condition**	Sampling Time	Depth (m)		Water Temperature (°C)		pH		Salinity ppt		DO Saturation (%)		Dissolved Oxygen (mg/L)			Turbidity (NTU)			Suspended Solids (mg/L)		
						Value	Average	Value	Average	Value	Average	Value	Average	Value	Average	DA*	Value	Average	DA*	Value	Average	DA*
24-Apr-09	Sunny	Calm	11:55	Surface	1	20.8 20.8	20.8	8.1 7.8	8.0	36.1 36.1	36.1	92.3 90.0	91.2	6.7 6.5	6.6	6.5	3.2 3.4	3.3	2.7	8.0 8.0	8.0	9.5
				Middle	5	20.8 20.8	20.8	8.2 8.2	8.2	36.3 36.3	36.3	88.6 88.6	88.6	6.4 6.4	6.4		2.6 2.7	2.7		12.0 12.0	12.0	
				Bottom	9	20.8 20.8	20.8	7.8 7.9	7.9	36.4 36.4	36.4	89.1 89.4	89.3	6.4 6.4	6.4		2.3 2.1	2.2		8.0 9.0	8.5	
27-Apr-09	Sunny	Calm	13:58	Surface	1	22.5 22.6	22.6	8.4 7.8	8.1	36.6 37.0	36.8	93.9 93.7	93.8	6.9 6.8	6.9	6.9	4.1 3.3	3.7	3.4	9.0 9.0	9.0	9.3
				Middle	4.5	22.5 22.5	22.5	8.3 8.5	8.4	34.7 36.2	35.5	93.1 93.1	93.1	6.9 6.8	6.9		3.1 2.8	3.0		9.0 9.0	9.0	
				Bottom	8	22.5 22.5	22.5	7.9 8.0	8.0	36.5 33.5	35.0	92.7 92.6	92.7	6.8 6.9	6.9		3.3 3.4	3.4		10.0 10.0	10.0	
29-Apr-09	Sunny	Calm	15:30	Surface	1	22.5 22.4	22.5	7.8 7.8	7.8	36.9 35.9	36.4	89.5 89.6	89.6	6.6 6.6	6.6	6.7	3.6 3.5	3.6	3.6	7.0 7.0	7.0	7.0
				Middle	5	22.3 22.3	22.3	7.9 8.0	8.0	34.2 37.0	35.6	89.6 89.6	89.6	6.7 6.6	6.7		2.9 2.7	2.8		7.0 7.0	7.0	
				Bottom	9	22.2 22.2	22.2	7.9 7.8	7.9	36.5 37.0	36.8	89.5 89.4	89.5	6.6 6.6	6.6		4.2 4.5	4.4		7.0 7.0	7.0	

Remarks: The reporting limit for laboratory analysis of suspended solids is 2.5 mg/L. For the results below the reporting limit, the SS level will be taken as 2.5 mg/L.

* DA: Depth-Averaged

** Calm: Small or no wave; Moderate: Between calm and rough; Rough : White capped or rougher

Water Quality Monitoring Results at Intake A - Mid-Flood Tide

Date	Weather Condition	Sea Condition**	Sampling Time	Depth (m)		Water Temperature (°C)		pH		Salinity ppt		DO Saturation (%)		Dissolved Oxygen (mg/L)			Turbidity(NTU)			Suspended Solids (mg/L)		
						Value	Average	Value	Average	Value	Average	Value	Average	Value	Average	DA*	Value	Average	DA*	Value	Average	DA*
1-Apr-09	Sunny	Calm	09:15	Surface	1	21.7 21.7	21.7	7.8 8.0	7.9	36.0 36.3	36.2	100.9 100.2	100.6	6.9 6.8	6.9	6.5	3.8 3.7	3.8	4.0	10.0 10.0	10.0	6.0
				Middle	5	21.1 21.1	21.1	7.7 7.4	7.6	35.6 35.6	35.6	87.4 87.3	87.4	6.0 5.9	6.0		4.0 4.1	4.1		4.0 4.0	4.0	
				Bottom	9	20.6 20.6	20.6	7.3 7.9	7.6	35.8 35.8	35.8	88.8 88.0	88.4	6.4 6.3	6.4		4.0 3.9	4.0		4.0 4.0	4.0	
3-Apr-09	Fine	Calm	10:08	Surface	1	21.1 21.1	21.1	7.9 7.8	7.9	36.5 35.0	35.8	97.6 96.7	97.2	7.0 7.0	7.0	6.9	1.9 1.9	1.9	2.6	9.0 9.0	9.0	12.5
				Middle	5	20.9 20.9	20.9	7.9 8.0	8.0	36.8 36.9	36.9	92.5 92.3	92.4	6.7 6.6	6.7		2.8 2.9	2.9		15.0 15.0	15.0	
				Bottom	9	20.9 20.9	20.9	8.2 8.1	8.2	36.9 36.9	36.9	94.9 94.7	94.8	6.8 6.8	6.8		2.8 2.9	2.9		13.0 14.0	13.5	
6-Apr-09	Cloudy	Calm	15:48	Surface	1	21.1 21.1	21.1	7.5 7.6	7.6	36.9 36.9	36.9	90.4 90.3	90.4	6.5 6.5	6.5	6.5	1.6 1.5	1.6	2.8	6.0 6.0	6.0	5.8
				Middle	5	21.1 21.1	21.1	8.0 7.8	7.9	36.2 36.2	36.2	89.3 89.0	89.2	6.4 6.4	6.4		2.5 2.6	2.6		5.0 5.0	5.0	
				Bottom	9	21.0 21.0	21.0	7.8 8.0	7.9	36.7 36.7	36.7	87.5 87.5	87.5	6.3 6.3	6.3		4.3 4.3	4.3		6.0 7.0	6.5	
8-Apr-09	Fine	Calm	16:56	Surface	1	21.2 21.2	21.2	8.1 7.7	7.9	36.6 36.6	36.6	93.6 92.8	93.2	6.8 6.7	6.8	6.7	1.9 1.9	1.9	2.5	5.0 5.0	5.0	3.0
				Middle	5	21.2 21.2	21.2	7.9 8.1	8.0	36.8 36.8	36.8	90.4 90.1	90.3	6.5 6.5	6.5		2.4 2.7	2.6		7.0 7.0	7.0	
				Bottom	9	21.2 21.2	21.2	7.8 7.8	7.8	36.2 36.8	36.5	89.7 89.6	89.7	6.5 6.5	6.5		3.0 2.9	3.0		4.0 4.0	4.0	
10-Apr-09	Sunny	Calm	17:39	Surface	1	21.7 21.7	21.7	7.7 7.8	7.8	37.2 37.2	37.2	88.5 88.6	88.6	6.4 6.4	6.4	6.5	3.6 3.4	3.5	3.0	4.0 4.0	4.0	4.7
				Middle	5	21.7 21.7	21.7	7.8 7.7	7.8	36.9 36.9	36.9	90.6 90.1	90.4	6.6 6.5	6.6		2.8 2.8	2.8		6.0 6.0	6.0	
				Bottom	9	21.7 21.7	21.7	7.8 8.0	7.9	37.0 37.0	37.0	88.5 88.4	88.5	6.4 6.4	6.4		2.6 2.8	2.7		4.0 4.0	4.0	
13-Apr-09	Fine	Calm	08:28	Surface	1	22.4 22.4	22.4	8.1 8.1	8.1	35.2 35.5	35.4	93.7 93.5	93.6	7.1 7.0	7.1	6.9	2.8 2.8	2.8	2.5	4.0 4.0	4.0	5.3
				Middle	5	22.4 22.4	22.4	8.4 8.1	8.3	35.6 35.6	35.6	88.5 87.3	87.9	6.6 6.5	6.6		2.4 2.3	2.4		8.0 8.0	8.0	
				Bottom	9	22.4 22.4	22.4	8.5 8.5	8.5	35.0 36.1	35.6	86.7 86.9	86.8	6.4 6.4	6.4		2.3 2.4	2.4		4.0 4.0	4.0	
15-Apr-09	Sunny	Calm	08:24	Surface	1	22.3 22.4	22.4	7.7 7.8	7.8	36.1 36.1	36.1	93.4 92.0	92.7	6.7 6.6	6.7	6.6	3.1 3.1	3.1	3.2	<2.5 <2.5	<2.5	2.8
				Middle	5	22.4 22.4	22.4	7.8 7.9	7.9	36.0 36.0	36.0	89.2 89.2	89.2	6.4 6.4	6.4		3.3 3.3	3.3		3.0 3.0	2.8	
				Bottom	9	22.4 22.4	22.4	8.0 8.1	8.1	36.0 36.0	36.0	87.1 87.1	87.1	6.3 6.3	6.3		3.2 3.2	3.2		3.0 3.0	3.0	
17-Apr-09	Sunny	Calm	09:25	Surface	1	22.4 22.4	22.4	8.0 7.7	7.9	36.7 36.7	36.7	98.6 98.8	98.7	6.9 6.9	6.9	7.0	1.3 1.3	1.3	1.4	5.0 4.0	4.5	3.8
				Middle	5	22.3 22.2	22.3	8.3 8.1	8.2	36.7 36.6	36.7	98.8 98.6	98.7	7.0 6.9	7.0		1.2 1.1	1.2		4.0 4.0	4.0	
				Bottom	9	22.1 22.1	22.1	7.9 8.1	8.0	36.9 36.9	36.9	94.3 94.1	94.2	6.6 6.6	6.6		1.7 1.7	1.7		3.0 3.0	3.0	
20-Apr-09	Sunny	Calm	15:07	Surface	1	25.3 25.3	25.3	7.8 7.9	7.9	35.0 35.0	35.0	86.0 85.7	85.9	6.5 6.4	6.5	6.4	2.8 2.9	2.9	2.5	4.0 4.0	4.0	5.3
				Middle	4.5	25.3 25.3	25.3	8.1 8.0	8.1	34.4 34.3	34.4	85.0 85.0	85.0	6.3 6.3	6.3		2.3 2.3	2.3		6.0 6.0	6.0	
				Bottom	8	25.4 25.4	25.4	8.0 8.1	8.1	32.2 35.3	33.8	83.8 84.1	84.0	6.2 6.3	6.3		2.3 2.4	2.4		6.0 6.0	6.0	

Water Quality Monitoring Results at Intake A - Mid-Flood Tide

Date	Weather Condition	Sea Condition**	Sampling Time	Depth (m)		Water Temperature (°C)		pH		Salinity ppt		DO Saturation (%)		Dissolved Oxygen (mg/L)			Turbidity (NTU)			Suspended Solids (mg/L)		
						Value	Average	Value	Average	Value	Average	Value	Average	Value	Average	DA*	Value	Average	DA*	Value	Average	DA*
22-Apr-09	Fine	Calm	16:47	Surface	1	22.8 22.8	22.8	8.0 7.9	8.0	36.9 37.0	37.0	95.3 95.9	95.6	6.6 6.7	6.7	6.8	3.8 3.9	3.9	4.4	6.0 6.0	6.0	5.8
				Middle	5	22.8 22.8	22.8	7.9 8.0	8.0	36.1 37.0	36.6	97.1 97.1	97.1	6.8 6.8	6.8		4.3 4.5	4.4		5.0 6.0	5.5	
				Bottom	9	22.8 22.8	22.8	7.9 8.0	8.0	35.1 33.5	34.3	95.9 96.2	96.1	6.8 6.8	6.8		5.1 4.8	5.0		6.0 6.0	6.0	
24-Apr-09	Fine	Calm	16:54	Surface	1	20.8 20.8	20.8	8.0 7.9	8.0	36.5 36.5	36.5	91.3 91.2	91.3	6.6 6.6	6.6	6.8	3.6 3.2	3.4	2.8	14.0 14.0	14.0	11.0
				Middle	5	20.8 20.8	20.8	8.3 8.0	8.2	36.2 36.2	36.2	94.9 94.4	94.7	6.9 6.8	6.9		2.3 2.4	2.4		10.0 10.0	10.0	
				Bottom	9	20.8 20.8	20.8	8.1 8.3	8.2	36.3 36.3	36.3	91.7 91.6	91.7	6.6 6.6	6.6		2.6 2.8	2.7		9.0 9.0	9.0	
27-Apr-09	Sunny	Calm	07:48	Surface	1	22.6 22.6	22.6	8.0 7.8	7.9	37.0 36.9	37.0	102.8 102.4	102.6	7.5 7.4	7.5	7.5	3.5 3.4	3.5	3.8	9.0 9.0	9.0	9.3
				Middle	5	22.5 22.5	22.5	8.1 7.9	8.0	36.1 36.4	36.3	100.9 100.8	100.9	7.4 7.3	7.4		4.6 4.4	4.5		9.0 9.0	9.0	
				Bottom	9	22.5 22.5	22.5	8.2 8.2	8.2	34.2 35.4	34.8	100.3 100.1	100.2	7.4 7.3	7.4		3.8 3.1	3.5		10.0 10.0	10.0	
29-Apr-09	Sunny	Calm	07:52	Surface	1	22.5 22.5	22.5	7.7 7.8	7.8	34.8 36.1	35.5	93.4 93.0	93.2	6.7 6.7	6.7	6.7	3.6 3.6	3.6	4.0	7.0 7.0	7.0	7.0
				Middle	5	22.3 22.3	22.3	7.6 7.5	7.6	35.5 36.4	36.0	92.0 91.7	91.9	6.6 6.6	6.6		4.1 4.2	4.2		7.0 7.0	7.0	
				Bottom	9	22.2 22.2	22.2	7.6 7.5	7.6	36.9 37.0	37.0	95.9 95.8	95.9	7.0 7.0	7.0		4.1 4.0	4.1		7.0 7.0	7.0	

Remarks: The reporting limit for laboratory analysis of suspended solids is 2.5 mg/L. For the results below the reporting limit, the SS level will be taken as 2.5 mg/L.

* DA: Depth-Averaged

** Calm: Small or no wave; Moderate: Between calm and rough; Rough: White capped or rougher

Water Quality Monitoring Results at Intake B - Mid-Ebb Tide

Date	Weather Condition	Sea Condition**	Sampling Time	Depth (m)		Water Temperature (°C)		pH		Salinity ppt		DO Saturation (%)		Dissolved Oxygen (mg/L)			Turbidity (NTU)			Suspended Solids (mg/L)		
						Value	Average	Value	Average	Value	Average	Value	Average	Value	Average	DA*	Value	Average	DA*	Value	Average	DA*
1-Apr-09	Sunny	Calm	15:55	Surface	1	23.2 23.2	23.2	7.4 7.3	7.4	35.8 35.8	35.8	108.6 108.7	108.7	7.4 7.4	7.4	7.2	3.0 3.0	3.0	3.1	8.0 8.0	8.0	7.3
				Middle	6	22.2 22.0	22.1	7.2 7.9	7.6	36.2 36.2	36.2	100.8 101.0	100.9	6.8 6.9	6.9		3.0 2.9	3.0		7.0 7.0	7.0	
				Bottom	11	21.6 21.6	21.6	7.6 6.9	7.3	36.5 36.5	36.5	89.9 88.2	89.1	6.3 6.2	6.3		3.3 3.4	3.4		7.0 7.0	7.0	
6-Apr-09	Cloudy	Calm	10:47	Surface	1	21.1 21.1	21.1	7.8 7.7	7.8	36.9 36.9	36.9	89.2 88.9	89.1	6.5 6.4	6.5	6.5	2.5 2.8	2.7	2.8	7.0 7.0	7.0	7.5
				Middle	6	21.1 21.1	21.1	7.9 7.9	7.9	36.9 36.1	36.5	88.5 88.4	88.5	6.4 6.4	6.4		2.7 2.7	2.7		8.0 8.0	8.0	
				Bottom	11	21.0 21.0	21.0	7.8 8.0	7.9	37.0 36.9	37.0	86.6 86.5	86.6	6.3 6.2	6.3		2.9 2.9	2.9		7.0 8.0	7.5	
8-Apr-09	Sunny	Calm	11:48	Surface	1	21.1 21.1	21.1	7.6 7.5	7.6	36.5 36.4	36.5	88.5 86.9	87.7	6.5 6.3	6.4	6.4	6.2 6.5	6.4	7.4	3.0 3.0	3.0	3.8
				Middle	6	21.1 21.1	21.1	7.9 7.6	7.8	35.9 35.7	35.8	85.1 85.0	85.1	6.3 6.3	6.3		8.1 8.0	8.1		4.0 4.0	3.5	
				Bottom	11	21.2 21.1	21.2	7.7 8.0	7.9	33.5 36.7	35.1	83.8 84.7	84.3	6.2 6.2	6.2		7.9 7.3	7.6		5.0 5.0	5.0	
10-Apr-09	Sunny	Calm	12:34	Surface	1	21.6 21.7	21.7	7.9 7.8	7.9	36.9 36.9	36.9	89.4 88.8	89.1	6.5 6.5	6.5	6.5	3.2 2.8	3.0	2.7	4.0 4.0	4.0	4.0
				Middle	6	21.7 21.7	21.7	8.0 7.8	7.9	36.9 37.0	37.0	88.6 88.4	88.5	6.4 6.4	6.4		2.8 2.6	2.7		4.0 4.0	4.0	
				Bottom	11	21.7 21.7	21.7	7.9 7.9	7.9	37.1 37.2	37.2	88.3 88.3	88.3	6.4 6.4	6.4		2.3 2.4	2.4		4.0 4.0	4.0	
13-Apr-09	Fine	Calm	14:45	Surface	1	22.4 22.4	22.4	7.8 8.0	7.9	36.1 35.7	35.9	90.7 89.2	90.0	6.7 6.6	6.7	6.6	3.6 3.5	3.6	3.1	3.0 3.0	3.0	7.2
				Middle	5	22.5 22.5	22.5	8.3 7.9	8.1	35.1 34.9	35.0	85.4 85.4	85.4	6.4 6.4	6.4		2.9 2.8	2.9		9.0 9.0	9.0	
				Bottom	9	22.4 22.4	22.4	8.3 8.5	8.4	32.9 36.0	34.5	86.1 87.0	86.6	6.5 6.4	6.5		2.7 2.8	2.8		10.0 9.0	9.5	
15-Apr-09	Sunny	Calm	16:31	Surface	1	21.3 21.8	21.6	7.8 8.1	8.0	37.2 36.7	37.0	99.3 99.5	99.4	7.3 7.2	7.3	7.1	1.7 1.8	1.8	2.3	3.0 3.0	3.0	2.7
				Middle	6	22.3 22.3	22.3	8.2 7.8	8.0	36.3 36.3	36.3	93.9 92.7	93.3	6.8 6.7	6.8		2.3 2.4	2.4		<2.5 <2.5	<2.5	
				Bottom	11	22.4 22.4	22.4	7.9 8.0	8.0	36.3 36.3	36.3	90.6 90.2	90.4	6.5 6.5	6.5		2.7 2.8	2.8		<2.5 <2.5	<2.5	
17-Apr-09	Fine	Calm	16:53	Surface	1	22.1 22.1	22.1	8.1 8.3	8.2	37.0 36.1	36.6	90.5 89.5	90.0	6.4 6.4	6.4	6.4	4.1 4.1	4.1	2.9	3.0 3.0	3.0	3.3
				Middle	6	22.1 22.1	22.1	7.9 8.2	8.1	35.5 35.9	35.7	88.8 89.3	89.1	6.3 6.4	6.4		3.3 3.4	3.4		4.0 4.0	4.0	
				Bottom	11	22.3 22.4	22.4	8.0 8.2	8.1	36.8 36.8	36.8	89.7 90.4	90.1	6.3 6.4	6.4		1.3 1.3	1.3		3.0 3.0	3.0	
20-Apr-09	Sunny	Calm	10:09	Surface	1	25.5 25.5	25.5	7.8 7.8	7.8	35.1 35.2	35.2	92.6 90.5	91.6	6.9 6.7	6.8	6.6	3.7 3.4	3.6	3.4	4.0 4.0	4.0	6.0
				Middle	6	25.4 25.4	25.4	8.0 8.0	8.0	35.3 35.3	35.3	83.9 84.3	84.1	6.4 6.4	6.4		3.3 3.2	3.3		7.0 7.0	7.0	
				Bottom	11	25.4 25.4	25.4	7.9 8.0	8.0	34.7 35.4	35.1	85.0 85.0	85.0	6.3 6.3	6.3		3.2 3.2	3.2		7.0 7.0	7.0	
22-Apr-09	Fine	Calm	10:54	Surface	1	22.8 22.8	22.8	7.7 7.7	7.7	35.3 37.0	36.2	90.7 90.6	90.7	6.4 6.4	6.4	6.4	1.9 1.9	1.9	2.2	4.0 4.0	4.0	5.2
				Middle	6	22.8 22.8	22.8	7.9 7.8	7.9	37.0 37.1	37.1	90.1 89.3	89.7	6.4 6.3	6.4		1.9 2.1	2.0		5.0 5.0	5.0	
				Bottom	11	22.8 22.8	22.8	8.0 8.2	8.1	36.7 36.6	36.7	89.1 86.1	87.6	6.3 6.0	6.2		2.6 3.0	2.8		7.0 6.0	6.5	

Water Quality Monitoring Results at Intake B - Mid-Ebb Tide

Date	Weather Condition	Sea Condition**	Sampling Time	Depth (m)		Water Temperature (°C)		pH		Salinity ppt		DO Saturation (%)		Dissolved Oxygen (mg/L)			Turbidity (NTU)			Suspended Solids (mg/L)		
						Value	Average	Value	Average	Value	Average	Value	Average	Value	Average	DA*	Value	Average	DA*	Value	Average	DA*
24-Apr-09	Sunny	Calm	11:42	Surface	1	20.8 20.8	20.8	7.9 7.9	7.9	36.2 36.2	36.2	91.2 90.6	90.9	6.6 6.5	6.6	6.6	3.2 2.9	3.1	2.8	10.0 10.0	10.0	9.3
				Middle	6	20.8 20.8	20.8	8.1 7.9	8.0	36.2 36.3	36.3	90.4 90.2	90.3	6.5 6.5	6.5		2.8 2.6	2.7		9.0 9.0	9.0	
				Bottom	11	20.8 20.8	20.8	8.2 8.2	8.2	36.4 36.5	36.5	90.0 90.2	90.1	6.5 6.5	6.5		2.6 2.6	2.6		9.0 9.0	9.0	
27-Apr-09	Sunny	Calm	13:50	Surface	1	22.6 22.6	22.6	8.0 7.9	8.0	36.2 36.5	36.4	100.1 97.1	98.6	7.3 7.1	7.2	7.1	3.0 3.1	3.1	2.8	9.0 10.0	9.5	9.8
				Middle	6	22.6 22.5	22.6	7.9 8.0	8.0	37.0 33.7	35.4	95.5 95.7	95.6	6.9 7.1	7.0		2.8 2.8	2.8		11.0 11.0	11.0	
				Bottom	11	22.5 22.4	22.5	7.9 8.0	8.0	37.0 35.3	36.2	96.8 99.1	98.0	7.0 7.3	7.2		2.5 2.6	2.6		9.0 9.0	9.0	
29-Apr-09	Sunny	Calm	15:19	Surface	1	22.4 22.4	22.4	8.0 7.9	8.0	36.6 36.6	36.6	87.3 87.4	87.4	6.4 6.4	6.4	6.5	4.0 3.8	3.9	3.8	8.0 8.0	8.0	6.7
				Middle	6	22.3 22.3	22.3	7.7 7.9	7.8	34.2 36.7	35.5	87.6 87.6	87.6	6.5 6.4	6.5		3.2 2.9	3.1		6.0 6.0	6.0	
				Bottom	11	22.2 22.2	22.2	7.6 7.7	7.7	36.1 36.3	36.2	87.5 87.4	87.5	6.5 6.4	6.5		4.1 4.5	4.3		6.0 6.0	6.0	

Remarks: The reporting limit for laboratory analysis of suspended solids is 2.5 mg/L. For the results below the reporting limit, the SS level will be taken as 2.5 mg/L.

* DA: Depth-Averaged

** Calm: Small or no wave; Moderate: Between calm and rough; Rough : White capped or rougher

Water Quality Monitoring Results at Intake B - Mid-Flood Tide

Date	Weather Condition	Sea Condition**	Sampling Time	Depth (m)		Water Temperature (°C)		pH		Salinity ppt		DO Saturation (%)		Dissolved Oxygen (mg/L)			Turbidity(NTU)			Suspended Solids (mg/L)		
						Value	Average	Value	Average	Value	Average	Value	Average	Value	Average	DA*	Value	Average	DA*	Value	Average	DA*
1-Apr-09	Sunny	Calm	08:49	Surface	1	22.1 22.1	22.1	7.5 7.5	7.5	36.2 36.5	36.4	108.7 108.9	108.8	7.4 7.4	7.4	6.9	2.9 3.5	3.2	3.5	11.0 11.0	11.0	8.2
				Middle	6	20.9 20.9	20.9	8.4 8.0	8.2	35.8 36.0	35.9	93.9 93.9	93.9	6.4 6.4	6.4		3.1 3.4	3.3		7.0 7.0	7.0	
				Bottom	11	20.6 20.7	20.7	7.7 8.2	8.0	36.0 36.1	36.1	88.1 87.5	87.8	6.2 6.2	6.2		4.1 4.0	4.1		6.0 7.0	6.5	
3-Apr-09	Fine	Calm	10:26	Surface	1	20.9 20.9	20.9	7.7 7.8	7.8	37.0 37.0	37.0	89.7 88.9	89.3	6.5 6.4	6.5	6.5	3.8 3.5	3.7	2.9	14.0 14.0	14.0	11.0
				Middle	6	20.9 20.9	20.9	7.9 7.9	7.9	36.7 37.0	36.9	89.1 88.7	88.9	6.5 6.4	6.5		2.5 2.4	2.5		8.0 8.0	8.0	
				Bottom	11	20.9 20.9	20.9	7.8 8.0	7.9	37.1 37.1	37.1	87.5 87.2	87.4	6.3 6.3	6.3		2.5 2.7	2.6		11.0 11.0	11.0	
6-Apr-09	Cloudy	Calm	16:04	Surface	1	21.1 21.1	21.1	8.0 7.9	8.0	35.2 36.6	35.9	89.9 88.1	89.0	6.6 6.4	6.5	6.4	2.3 2.6	2.5	3.7	6.0 6.0	6.0	5.7
				Middle	6	21.0 21.0	21.0	7.9 7.8	7.9	36.3 36.2	36.3	86.8 86.6	86.7	6.3 6.3	6.3		3.5 3.9	3.7		5.0 5.0	5.0	
				Bottom	11	20.9 20.9	20.9	7.7 7.8	7.8	35.8 35.5	35.7	86.1 86.1	86.1	6.3 6.3	6.3		4.6 4.9	4.8		6.0 6.0	6.0	
8-Apr-09	Fine	Calm	17:18	Surface	1	21.2 21.2	21.2	7.8 7.8	7.8	36.4 36.5	36.5	90.2 90.1	90.2	6.5 6.5	6.5	6.5	3.3 3.2	3.3	4.6	5.0 5.0	5.0	4.0
				Middle	6	21.1 21.1	21.1	8.1 8.2	8.2	32.9 33.1	33.0	90.1 90.1	90.1	6.5 6.5	6.5		4.3 4.6	4.5		6.0 7.0	6.5	
				Bottom	11	21.1 21.1	21.1	7.6 7.9	7.8	36.2 36.7	36.5	88.9 88.9	88.9	6.4 6.4	6.4		5.8 5.9	5.9		5.0 5.0	5.0	
10-Apr-09	Sunny	Calm	17:48	Surface	1	21.7 21.7	21.7	8.1 8.0	8.1	36.9 36.9	36.9	89.1 88.9	89.0	6.5 6.5	6.5	6.5	3.4 3.2	3.3	3.0	4.0 4.0	4.0	4.5
				Middle	6	21.7 21.7	21.7	7.9 7.8	7.9	36.9 36.9	36.9	90.0 88.2	89.1	6.5 6.4	6.5		3.7 3.1	3.4		3.0 4.0	3.5	
				Bottom	11	21.7 21.7	21.7	7.8 7.7	7.8	36.2 36.2	36.2	87.9 87.9	87.9	6.4 6.4	6.4		2.4 2.4	2.4		6.0 6.0	6.0	
13-Apr-09	Fine	Calm	08:39	Surface	1	22.4 22.4	22.4	8.7 8.5	8.6	35.5 35.6	35.6	92.5 90.3	91.4	6.8 6.7	6.8	6.6	3.1 3.4	3.3	3.7	7.0 7.0	7.0	7.5
				Middle	4.5	22.3 22.3	22.3	8.5 8.0	8.3	32.2 32.3	32.3	83.7 84.1	83.9	6.3 6.4	6.4		4.1 4.1	4.1		7.0 8.0	7.5	
				Bottom	8	22.3 22.3	22.3	8.0 8.0	8.0	35.4 36.3	35.9	86.8 86.8	86.8	6.5 6.5	6.5		3.8 3.6	3.7		8.0 8.0	8.0	
15-Apr-09	Sunny	Calm	08:47	Surface	1	22.4 22.4	22.4	8.3 8.1	8.2	36.2 36.2	36.2	89.4 89.4	89.4	6.4 6.4	6.4	6.4	2.5 2.5	2.5	2.5	<2.5 <2.5	<2.5	3.0
				Middle	6	22.4 22.4	22.4	8.0 7.7	7.9	36.1 36.1	36.1	89.5 89.3	89.4	6.4 6.4	6.4		2.3 2.4	2.4		<2.5 <2.5	<2.5	
				Bottom	11	22.4 22.4	22.4	7.9 7.7	7.8	36.1 36.1	36.1	88.7 88.5	88.6	6.4 6.4	6.4		2.5 2.6	2.6		4.0 4.0	4.0	
17-Apr-09	Sunny	Calm	09:36	Surface	1	22.4 22.3	22.4	7.9 7.8	7.9	33.3 36.7	35.0	95.5 95.4	95.5	6.8 6.7	6.8	6.7	1.4 1.6	1.5	1.7	5.0 5.0	5.0	4.5
				Middle	6	22.1 22.1	22.1	7.8 8.2	8.0	36.3 35.3	35.8	93.0 92.3	92.7	6.6 6.6	6.6		1.8 1.8	1.8		5.0 5.0	5.0	
				Bottom	11	22.1 22.1	22.1	7.9 8.3	8.1	37.0 36.4	36.7	89.4 89.3	89.4	6.3 6.3	6.3		1.9 1.9	1.9		3.0 4.0	3.5	
20-Apr-09	Sunny	Calm	15:27	Surface	1	25.3 25.3	25.3	8.1 8.1	8.1	32.0 33.3	32.7	90.9 89.3	90.1	6.8 6.6	6.7	6.6	3.6 3.9	3.8	3.3	4.0 4.0	4.0	5.2
				Middle	6	25.3 25.3	25.3	8.1 7.9	8.0	35.1 35.1	35.1	85.6 85.6	85.6	6.4 6.4	6.4		3.4 2.8	3.1		5.0 6.0	5.5	
				Bottom	11	25.3 25.3	25.3	8.0 8.0	8.0	35.1 33.1	34.1	82.3 83.2	82.8	6.1 6.1	6.1		3.1 3.0	3.1		6.0 6.0	6.0	

Water Quality Monitoring Results at Intake B - Mid-Flood Tide

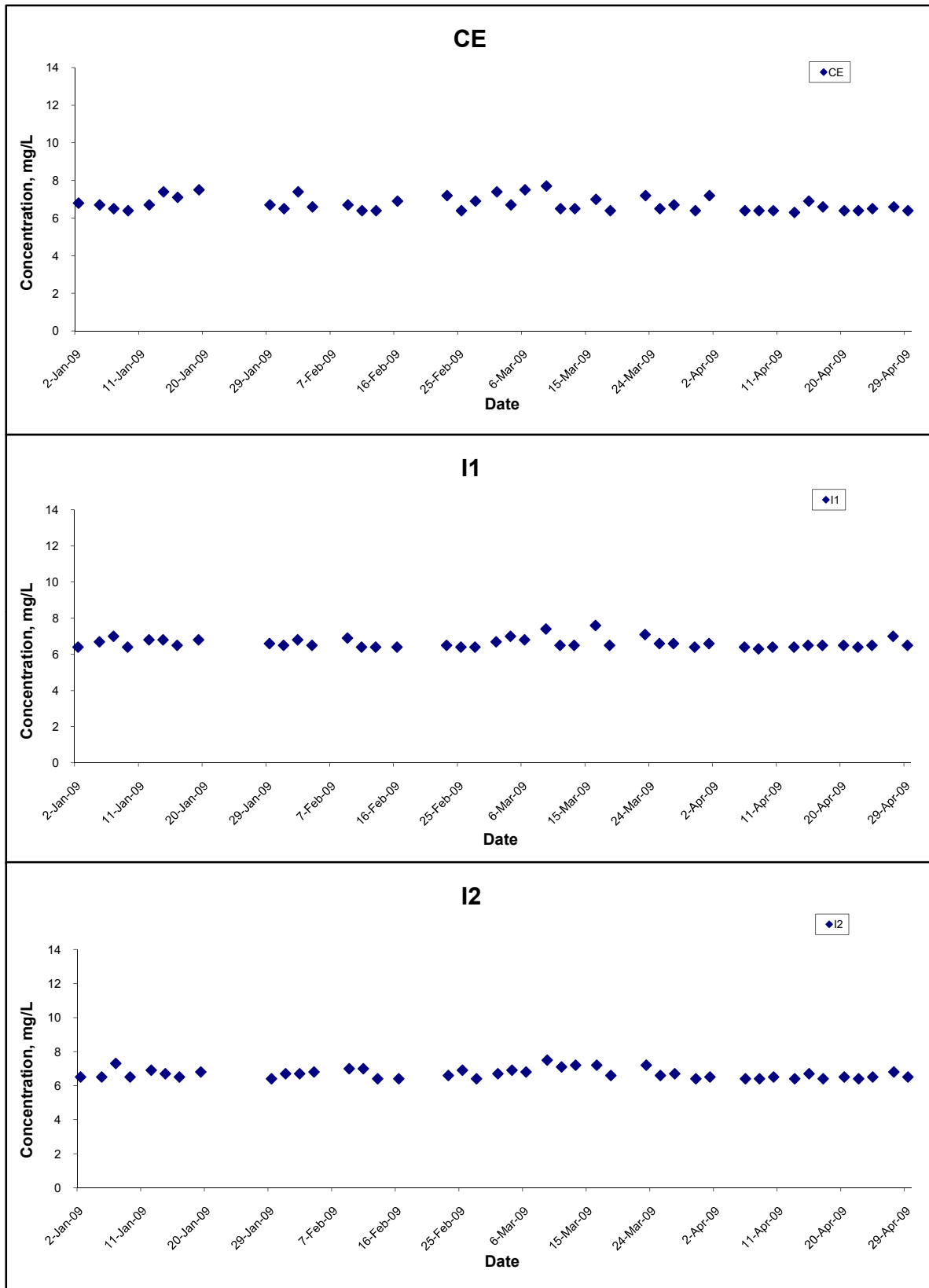
Date	Weather Condition	Sea Condition**	Sampling Time	Depth (m)		Water Temperature (°C)		pH		Salinity ppt		DO Saturation (%)		Dissolved Oxygen (mg/L)			Turbidity(NTU)			Suspended Solids (mg/L)		
						Value	Average	Value	Average	Value	Average	Value	Average	Value	Average	DA*	Value	Average	DA*	Value	Average	DA*
22-Apr-09	Fine	Calm	17:07	Surface	1	22.7 22.7	22.7	7.9 7.9	7.9	35.0 36.2	35.6	89.2 90.0	89.6	6.3 6.3	6.3	6.4	3.1 2.8	3.0	3.0	5.0 5.0	5.0	5.3
				Middle	6	22.8 22.8	22.8	8.0 7.9	8.0	35.7 36.2	36.0	92.3 92.5	92.4	6.5 6.5	6.5		2.4 2.3	2.4		5.0 5.0	5.0	
				Bottom	11	22.8 22.8	22.8	7.8 7.8	7.8	36.0 37.2	36.6	90.0 87.4	88.7	6.3 6.1	6.2		3.5 3.4	3.5		6.0 6.0	6.0	
24-Apr-09	Fine	Calm	17:06	Surface	1	20.8 20.8	20.8	8.5 8.3	8.4	36.2 36.2	36.2	90.9 90.7	90.8	6.6 6.5	6.6	6.6	3.1 3.2	3.2	3.1	9.0 9.0	9.0	11.2
				Middle	6	20.8 20.8	20.8	8.1 8.0	8.1	36.2 36.2	36.2	91.8 89.9	90.9	6.6 6.5	6.6		3.7 3.2	3.5		11.0 12.0	11.5	
				Bottom	11	20.8 20.8	20.8	7.9 7.9	7.9	35.5 35.5	35.5	89.6 89.6	89.6	6.5 6.5	6.5		2.6 2.5	2.6		13.0 13.0	13.0	
27-Apr-09	Sunny	Calm	08:09	Surface	1	22.6 22.6	22.6	8.1 8.1	8.1	36.5 36.2	36.4	89.7 89.3	89.5	6.6 6.5	6.6	6.6	4.4 4.3	4.4	3.7	10.0 10.0	10.0	10.2
				Middle	6	22.5 22.5	22.5	8.2 7.8	8.0	36.5 36.7	36.6	89.0 89.0	89.0	6.5 6.5	6.5		3.3 3.3	3.3		11.0 12.0	11.5	
				Bottom	11	22.4 22.4	22.4	7.9 8.1	8.0	36.9 36.5	36.7	90.0 90.2	90.1	6.6 6.6	6.6		3.4 3.4	3.4		9.0 9.0	9.0	
29-Apr-09	Sunny	Calm	08:15	Surface	1	22.5 22.5	22.5	7.5 7.7	7.6	35.7 36.3	36.0	87.9 87.3	87.6	6.5 6.4	6.5	6.5	3.6 3.6	3.6	3.5	8.0 8.0	8.0	9.0
				Middle	6	22.3 22.3	22.3	7.7 7.6	7.7	34.3 37.0	35.7	86.5 86.4	86.5	6.4 6.4	6.4		3.3 3.3	3.3		10.0 10.0	10.0	
				Bottom	11	22.2 22.2	22.2	7.9 8.2	8.1	34.8 34.4	34.6	86.2 86.2	86.2	6.4 6.4	6.4		3.4 4.0	3.7		9.0 9.0	9.0	

Remarks: The reporting limit for laboratory analysis of suspended solids is 2.5 mg/L. For the results below the reporting limit, the SS level will be taken as 2.5 mg/L.

* DA: Depth-Averaged

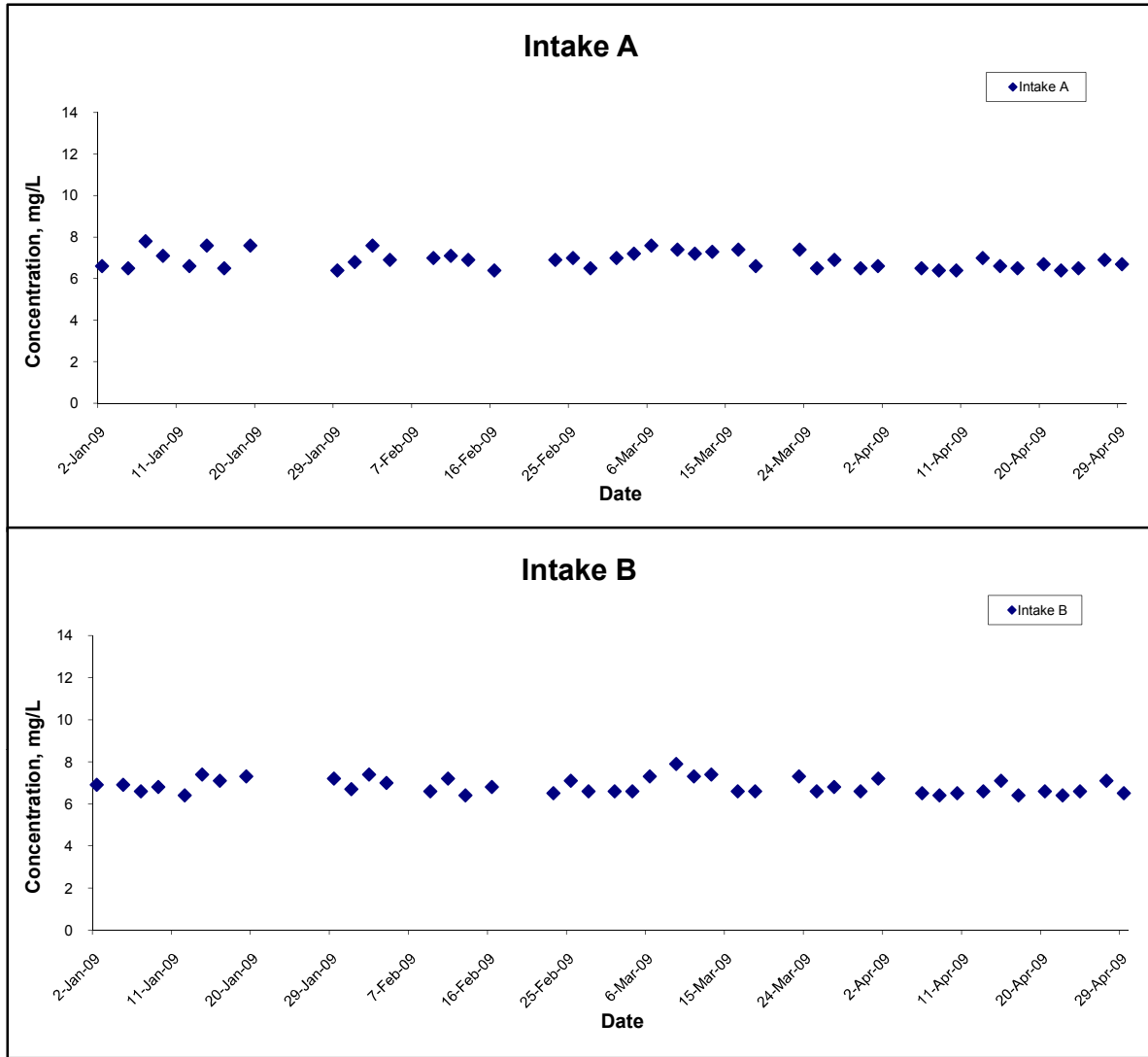
** Calm: Small or no wave; Moderate: Between calm and rough; Rough : White capped or rougher

Dissolved Oxygen (Surface & Middle) at Mid-Ebb Tide



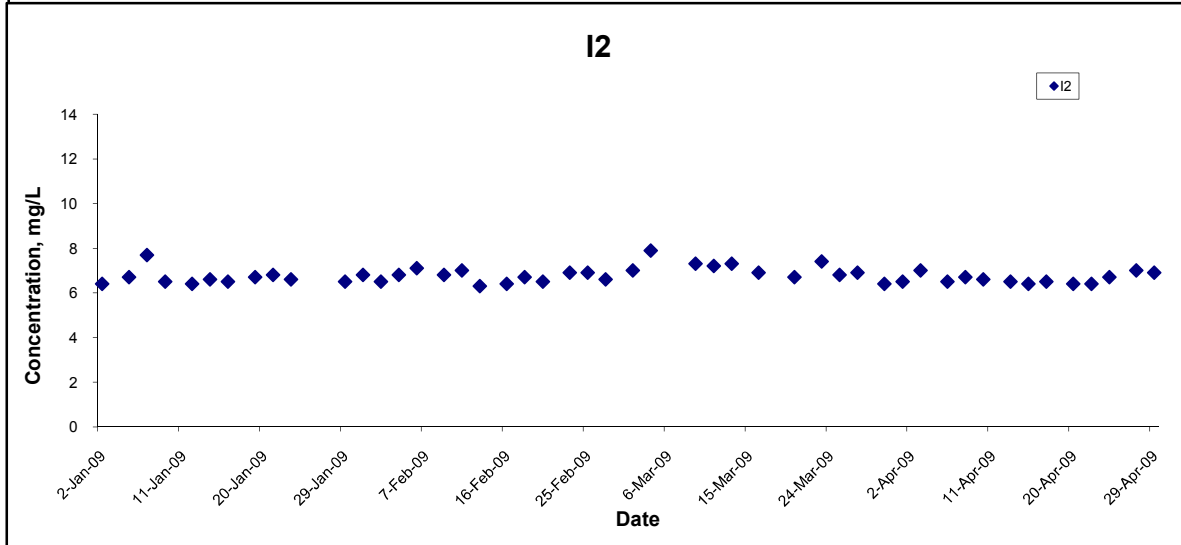
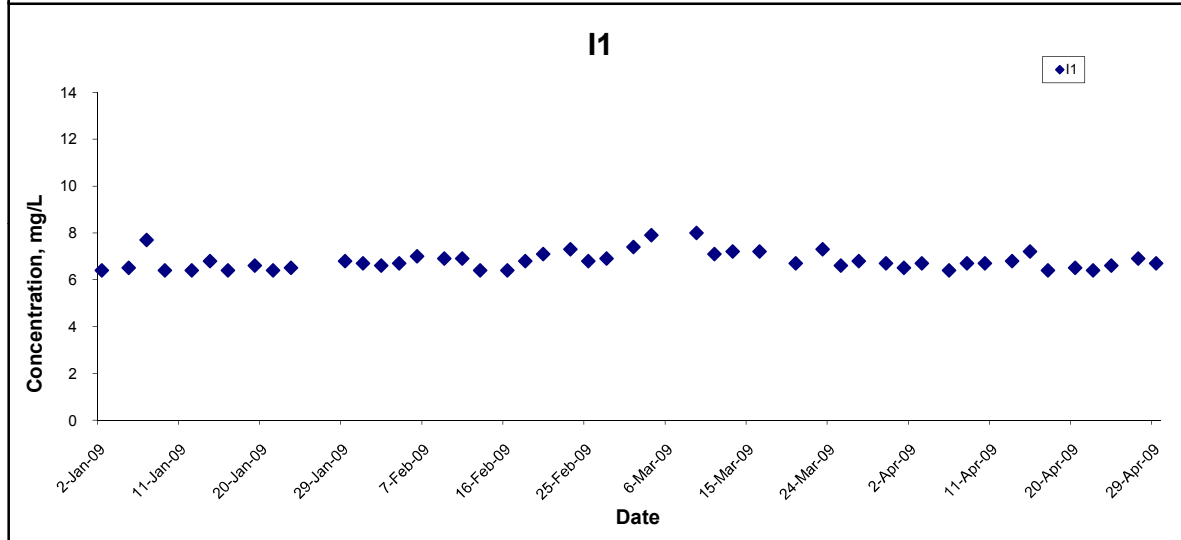
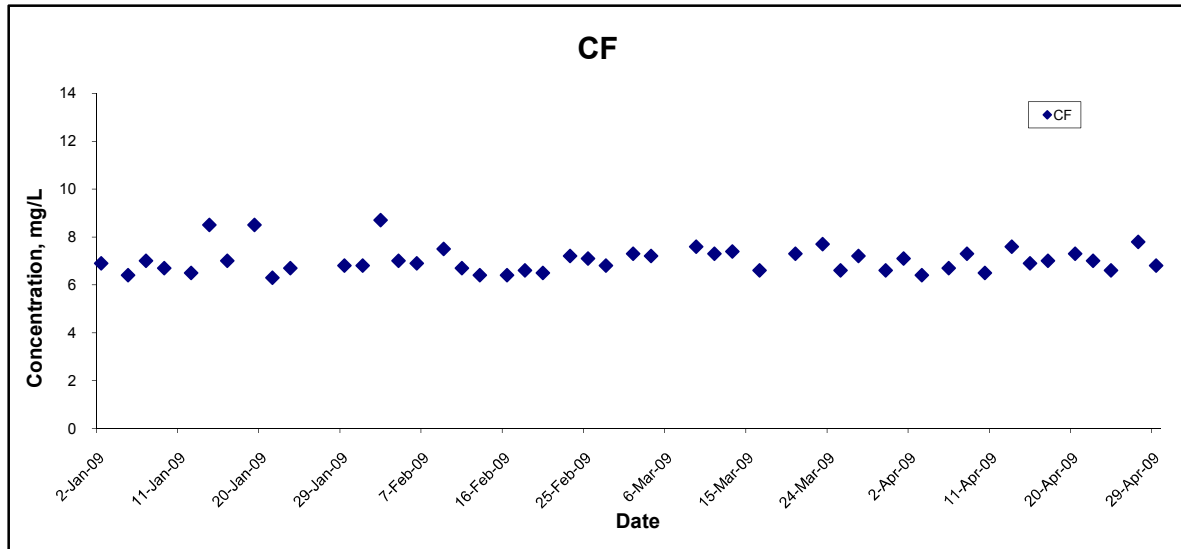
Title Contract No. DC/2007/10 Design and Construction of Hong Kong West Drainage Tunnel Graphical Presentation of Water Quality Monitoring Results	Scale N.T.S	Project No. MA8001	
	Date Apr 09	Appendix H	

Dissolved Oxygen (Surface & Middle) at Mid-Ebb Tide



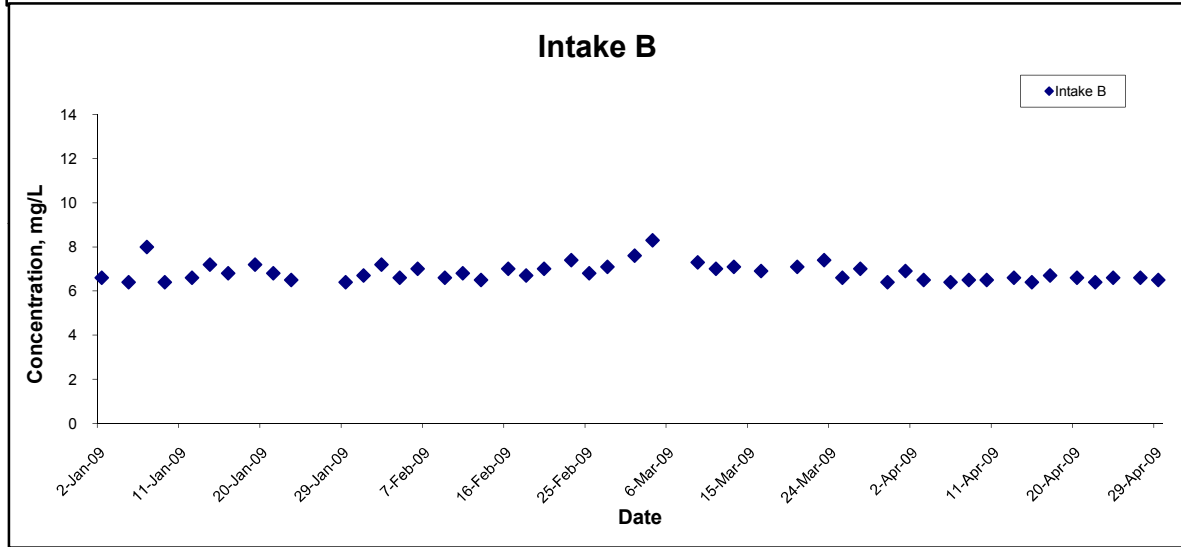
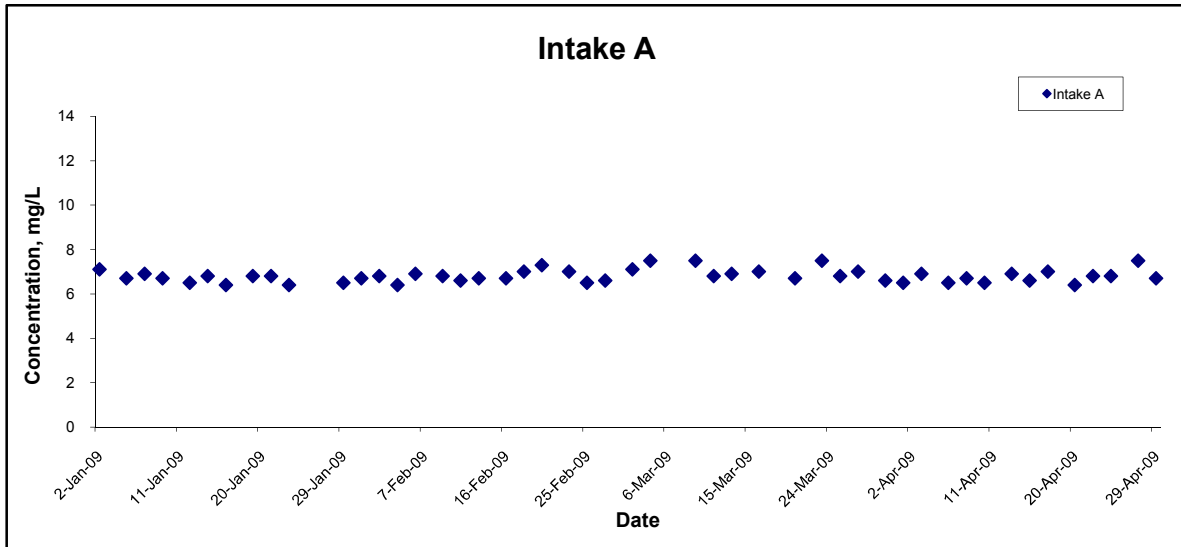
Title Contract No. DC/2007/10 Design and Construction of Hong Kong West Drainage Tunnel Graphical Presentation of Water Quality Monitoring Results	Scale N.T.S	Project No. MA8001	
	Date Apr 09	Appendix H	

Dissolved Oxygen (Surface & Middle) at Mid-Flood Tide



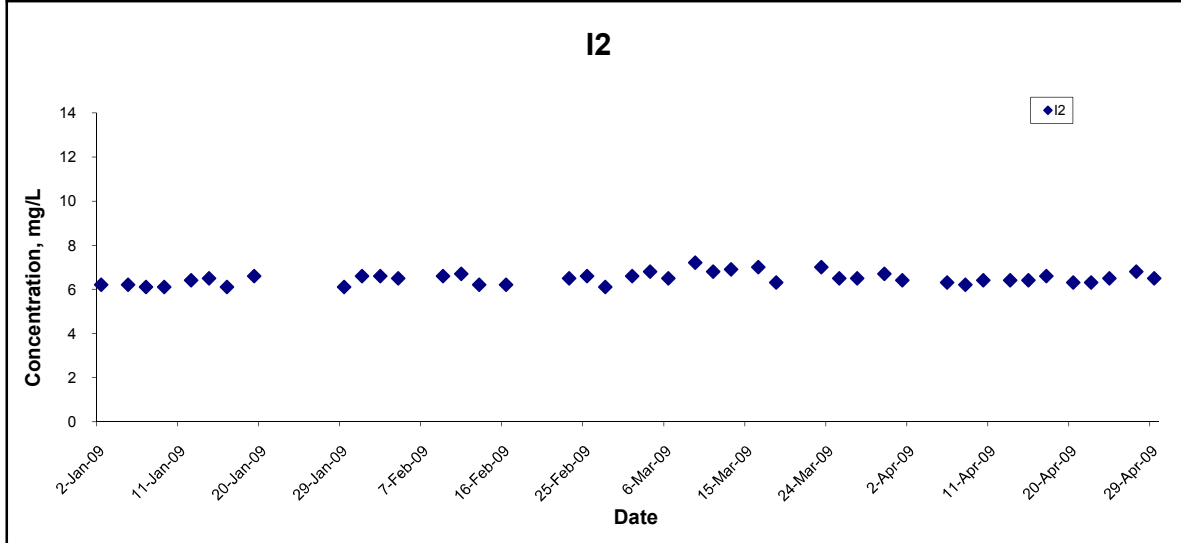
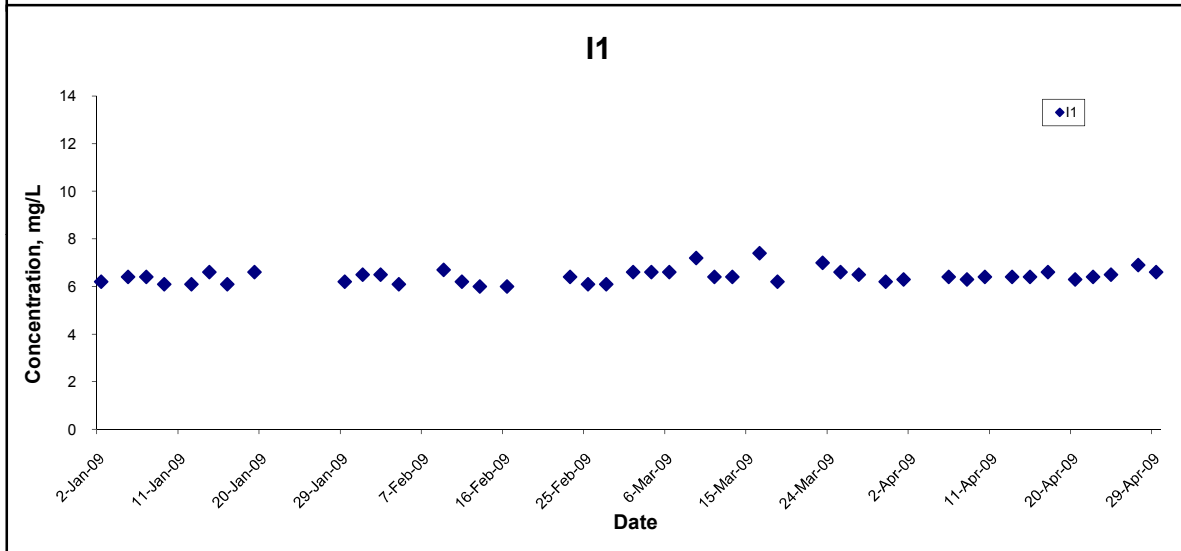
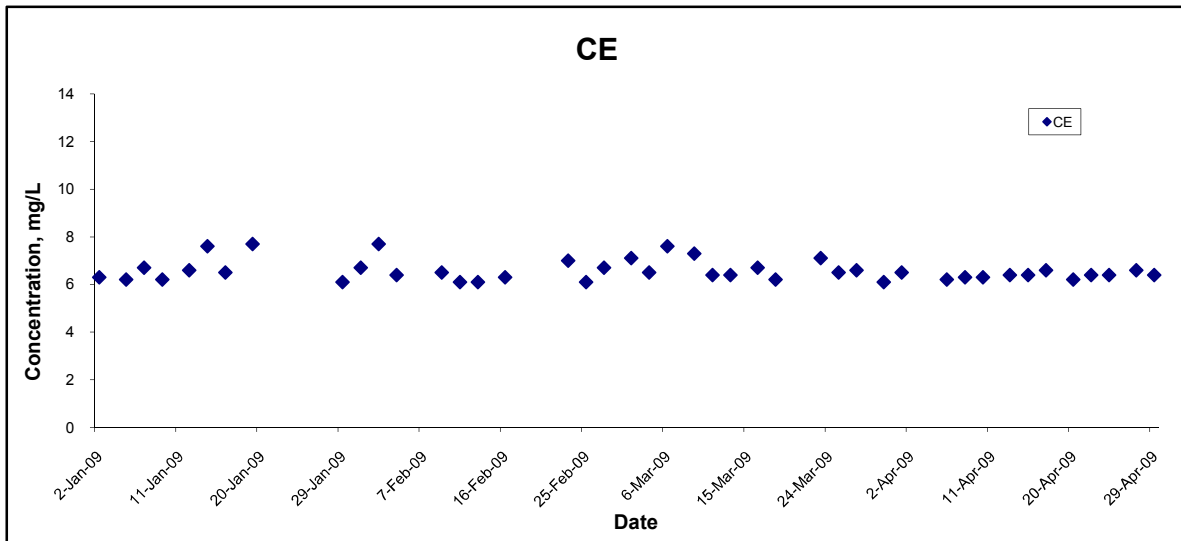
Title Contract No. DC/2007/10 Design and Construction of Hong Kong West Drainage Tunnel Graphical Presentation of Water Quality Monitoring Results	Scale N.T.S	Project No. MA8001	
	Date Apr 09	Appendix H	

Dissolved Oxygen (Surface & Middle) at Mid-Flood Tide



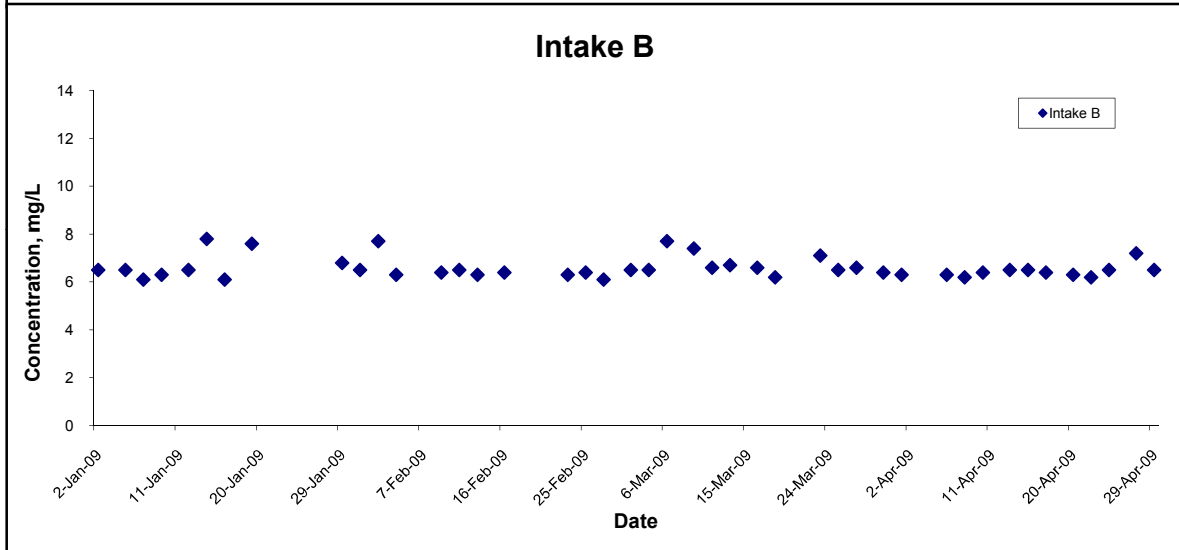
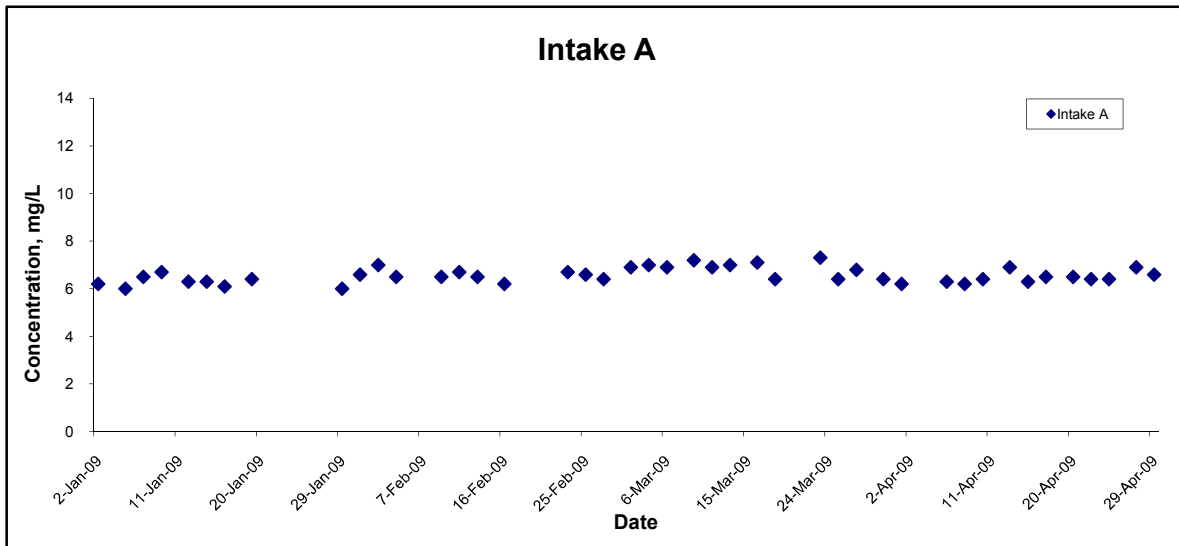
Title Contract No. DC/2007/10 Design and Construction of Hong Kong West Drainage Tunnel Graphical Presentation of Water Quality Monitoring Results	Scale N.T.S	Project No. MA8001	CINOTECH
	Date Apr 09	Appendix H	

Dissolved Oxygen (Bottom) at Mid-Ebb Tide



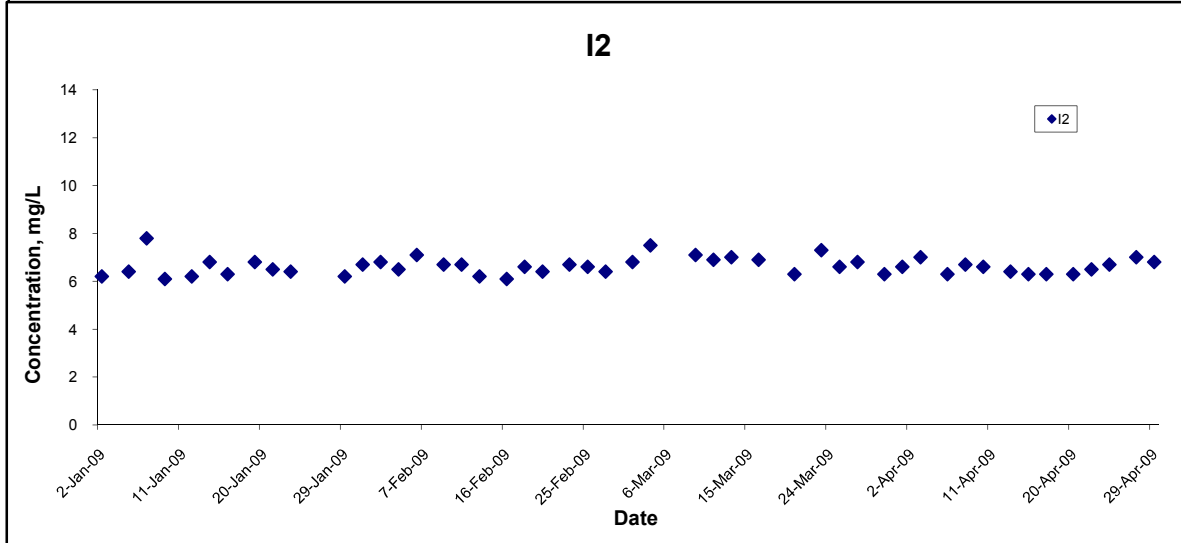
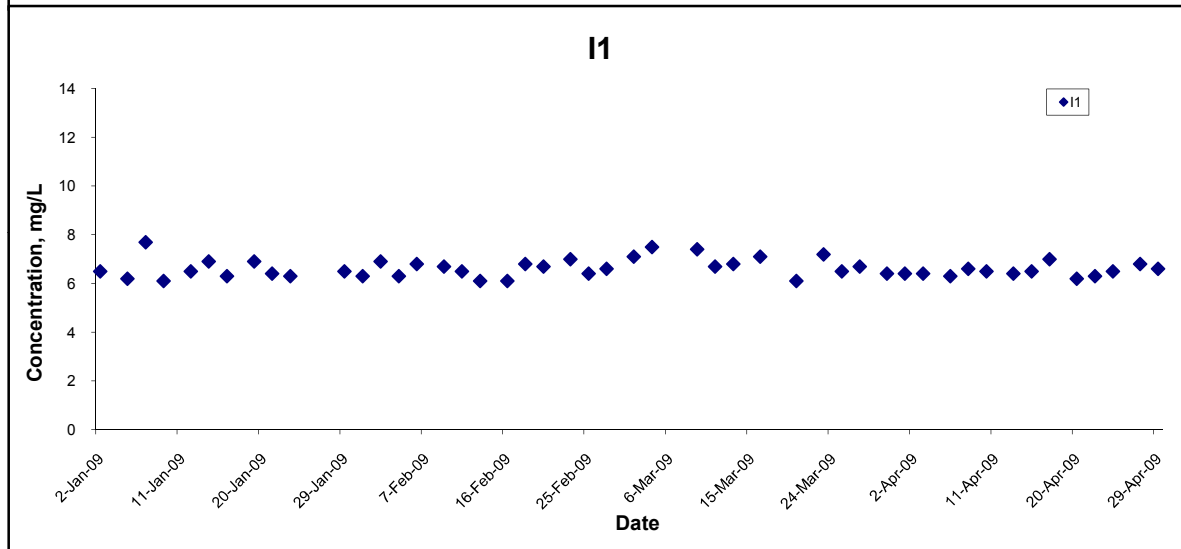
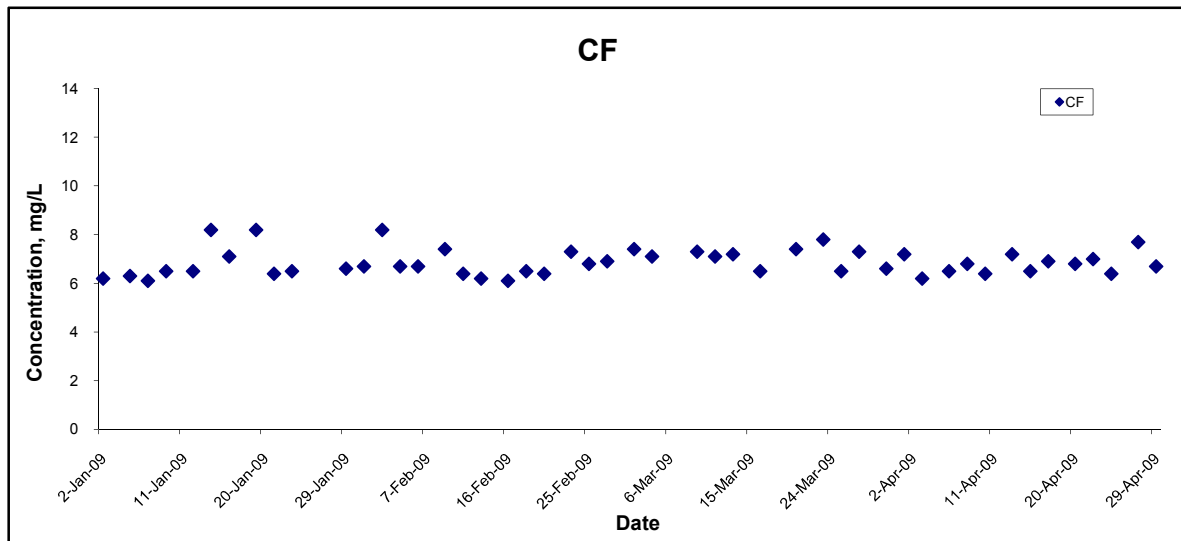
Title Contract No. DC/2007/10 Design and Construction of Hong Kong West Drainage Tunnel Graphical Presentation of Water Quality Monitoring Results	Scale N.T.S	Project No. MA8001	CINOTECH
	Date Apr 09	Appendix H	

Dissolved Oxygen (Bottom) at Mid-Ebb Tide



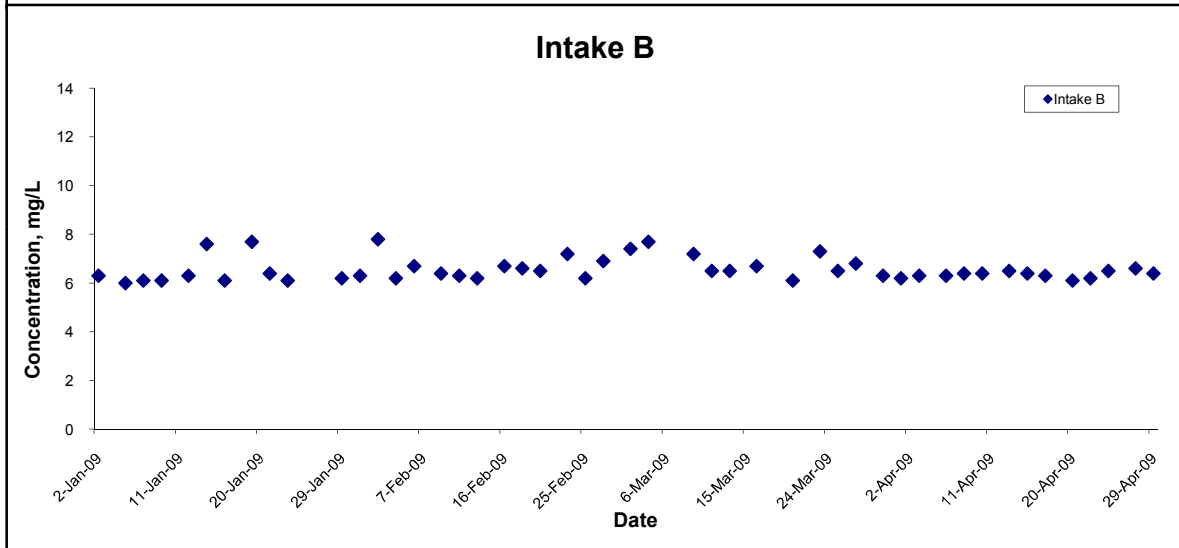
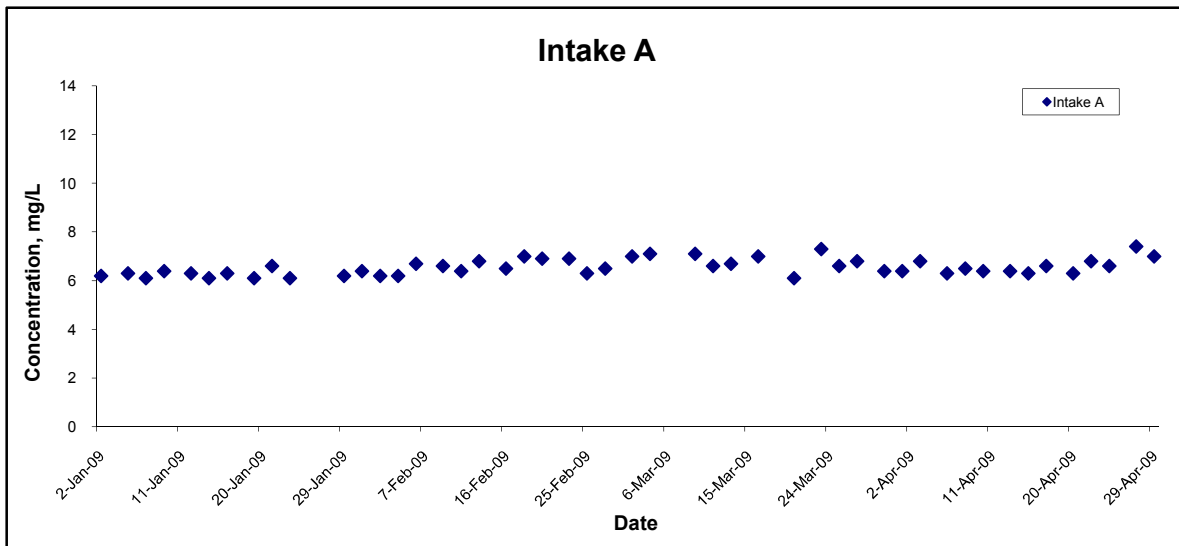
Title Contract No. DC/2007/10 Design and Construction of Hong Kong West Drainage Tunnel Graphical Presentation of Water Quality Monitoring Results	Scale N.T.S	Project No. MA8001	CINOTECH
	Date Apr 09	Appendix H	

Dissolved Oxygen (Bottom) at Mid-Flood Tide



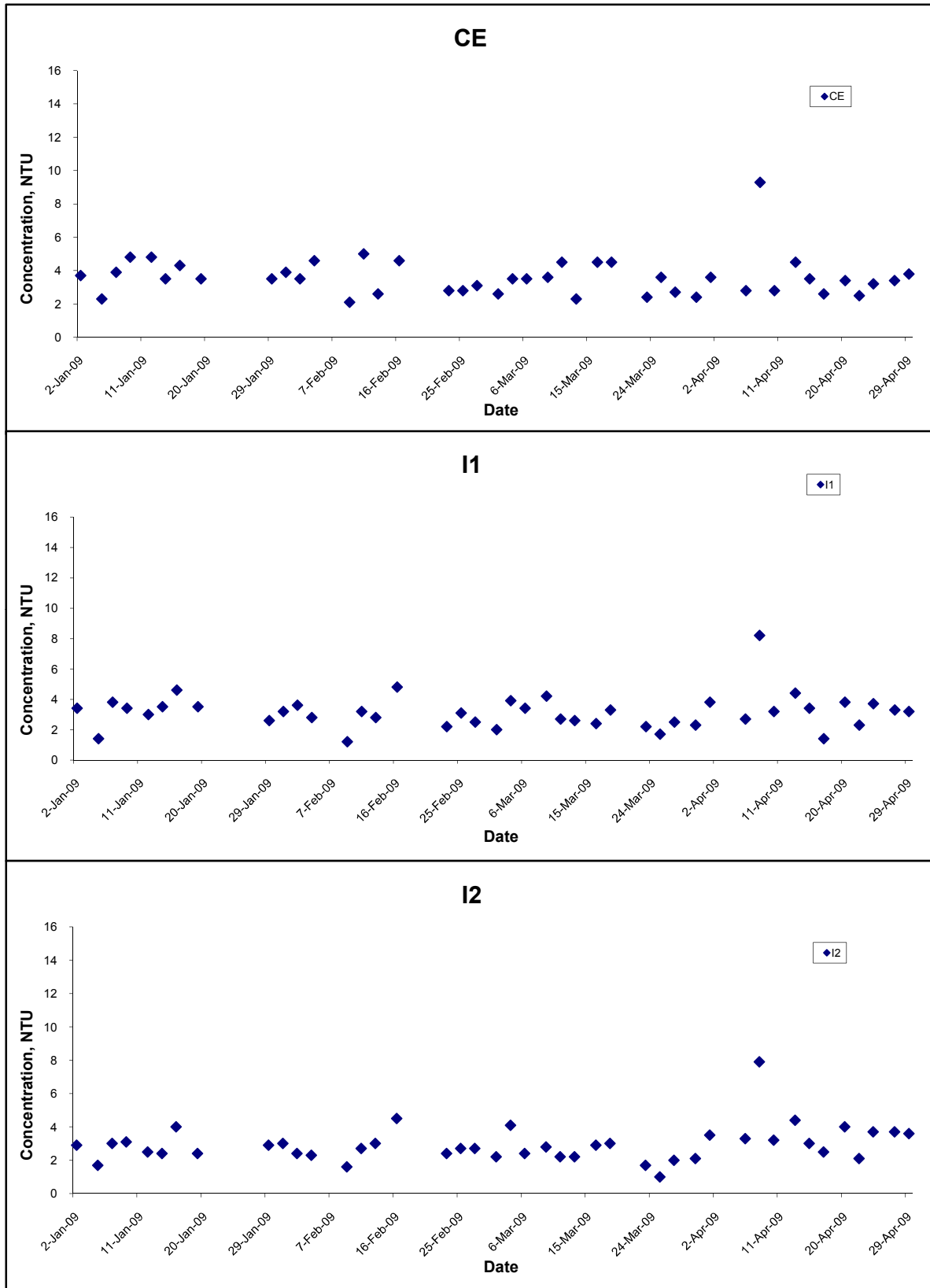
Title Contract No. DC/2007/10 Design and Construction of Hong Kong West Drainage Tunnel Graphical Presentation of Water Quality Monitoring Results	Scale N.T.S	Project No. MA8001	
	Date Apr 09	Appendix H	

Dissolved Oxygen (Bottom) at Mid-Flood Tide



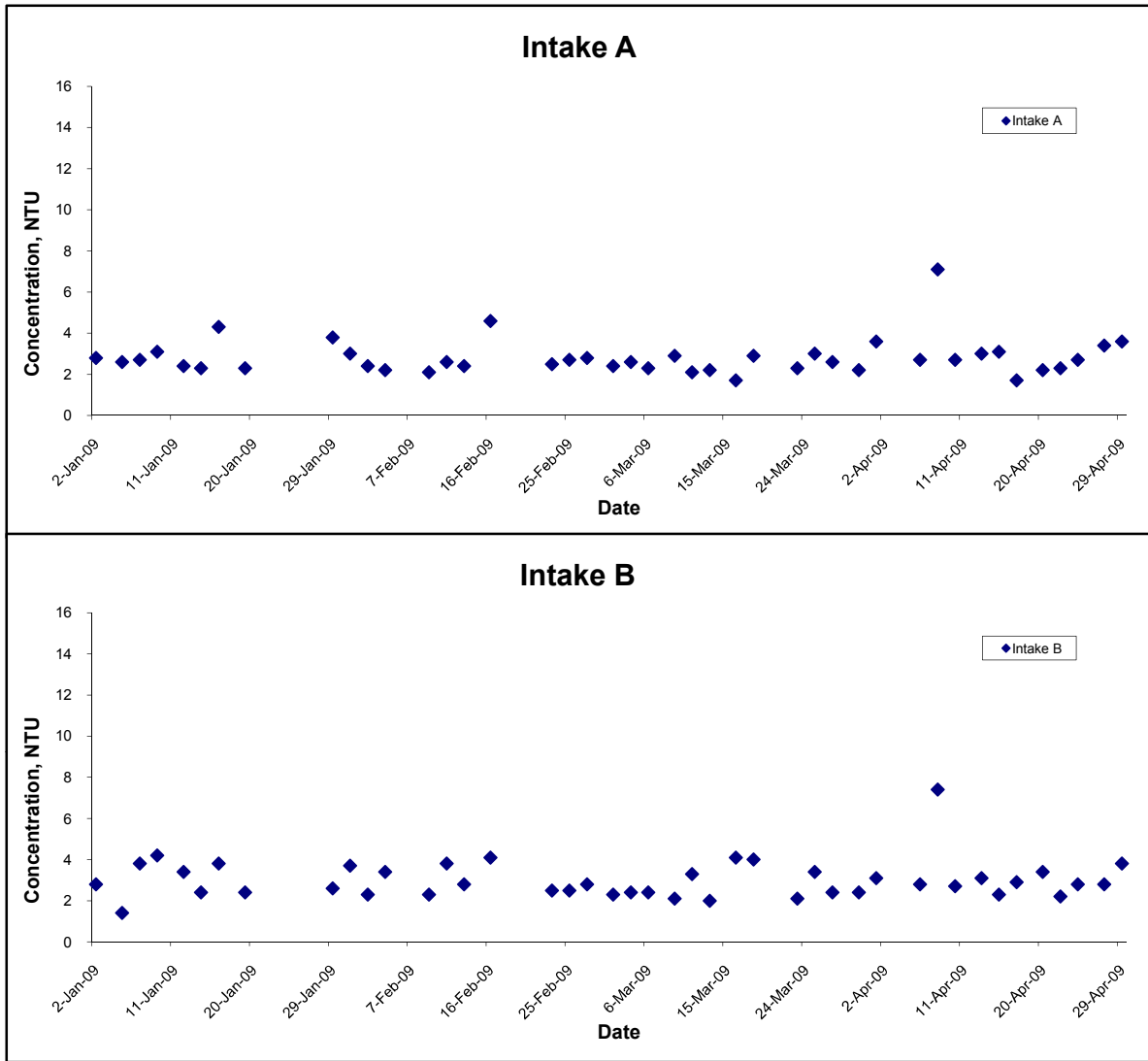
Title Contract No. DC/2007/10 Design and Construction of Hong Kong West Drainage Tunnel Graphical Presentation of Water Quality Monitoring Results	Scale N.T.S	Project No. MA8001	
	Date Apr 09	Appendix H	

Turbidity (Depth-averaged) at Mid-Ebb Tide



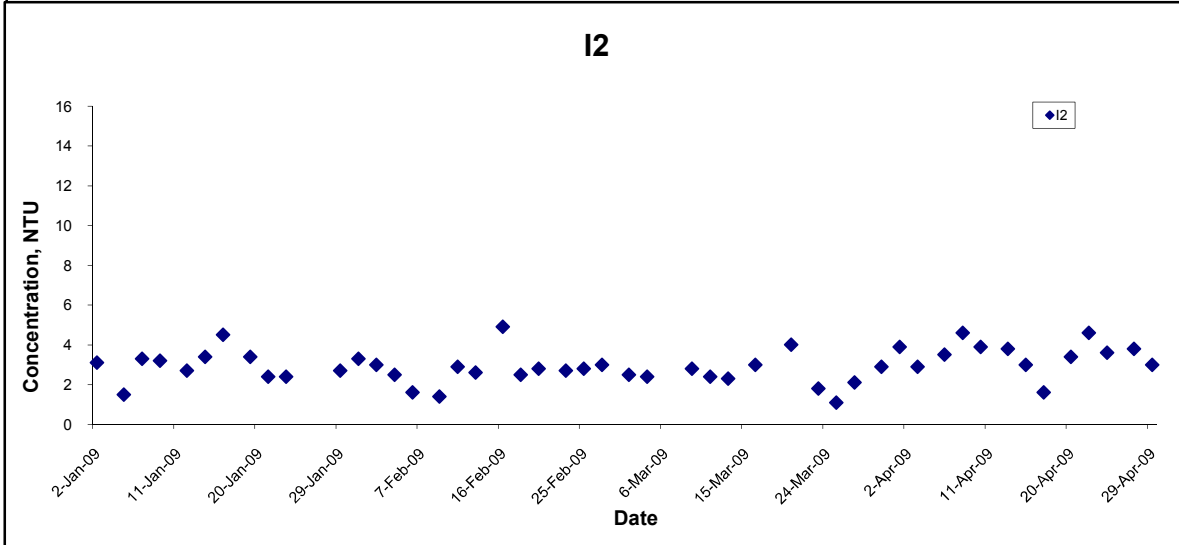
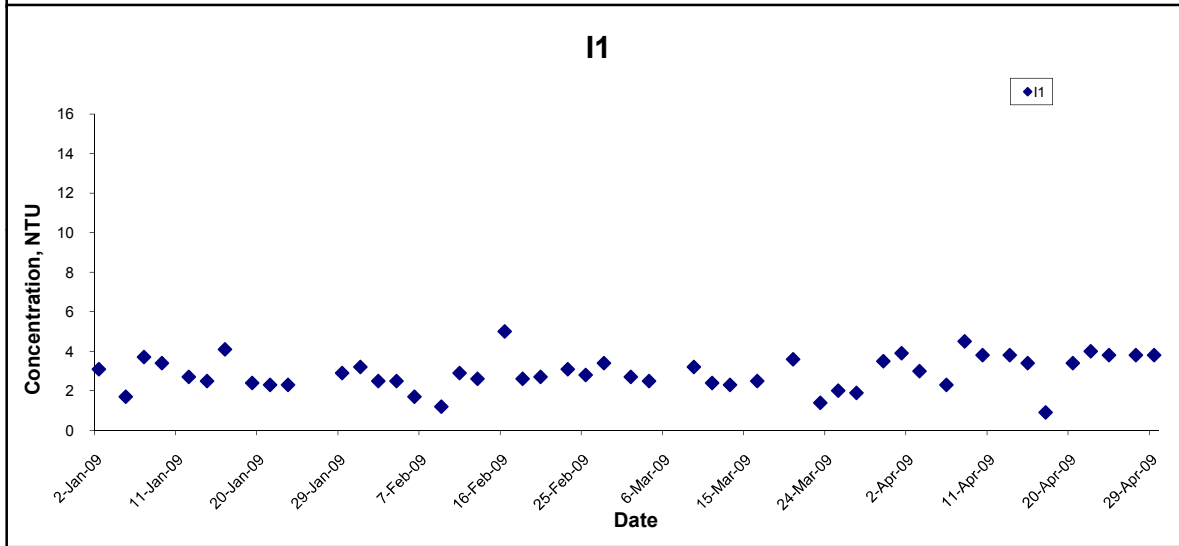
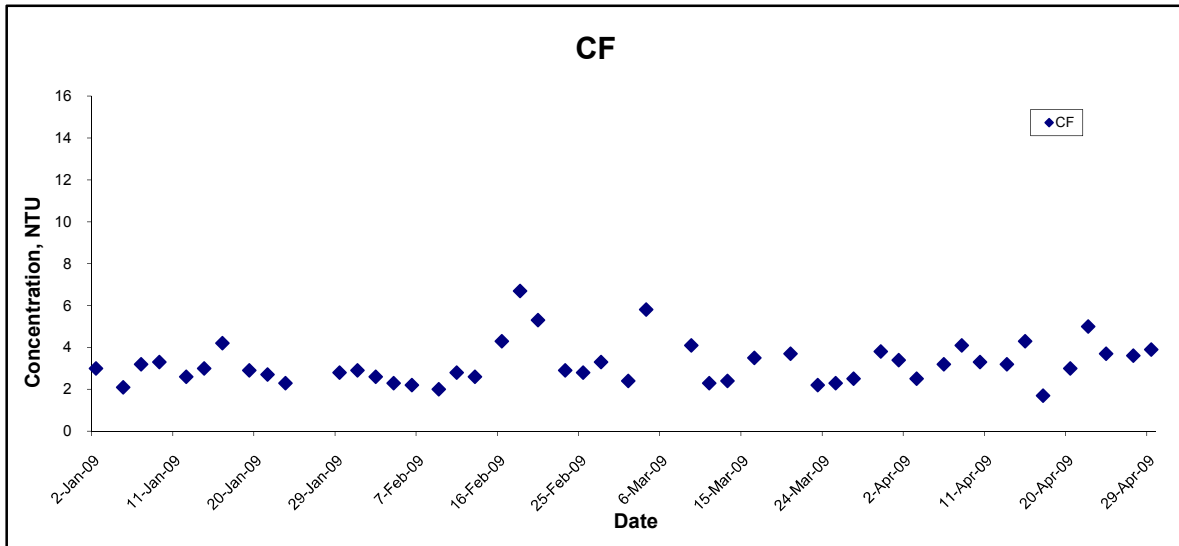
Title Contract No. DC/2007/10 Design and Construction of Hong Kong West Drainage Tunnel Graphical Presentation of Water Quality Monitoring Results	Scale N.T.S	Project No. MA8001	CINOTECH
	Date Apr 09	Appendix H	

Turbidity (Depth-averaged) at Mid-Ebb Tide



Title Contract No. DC/2007/10 Design and Construction of Hong Kong West Drainage Tunnel Graphical Presentation of Water Quality Monitoring Results	Scale N.T.S	Project No. MA8001	CINOTECH
	Date Apr 09	Appendix H	

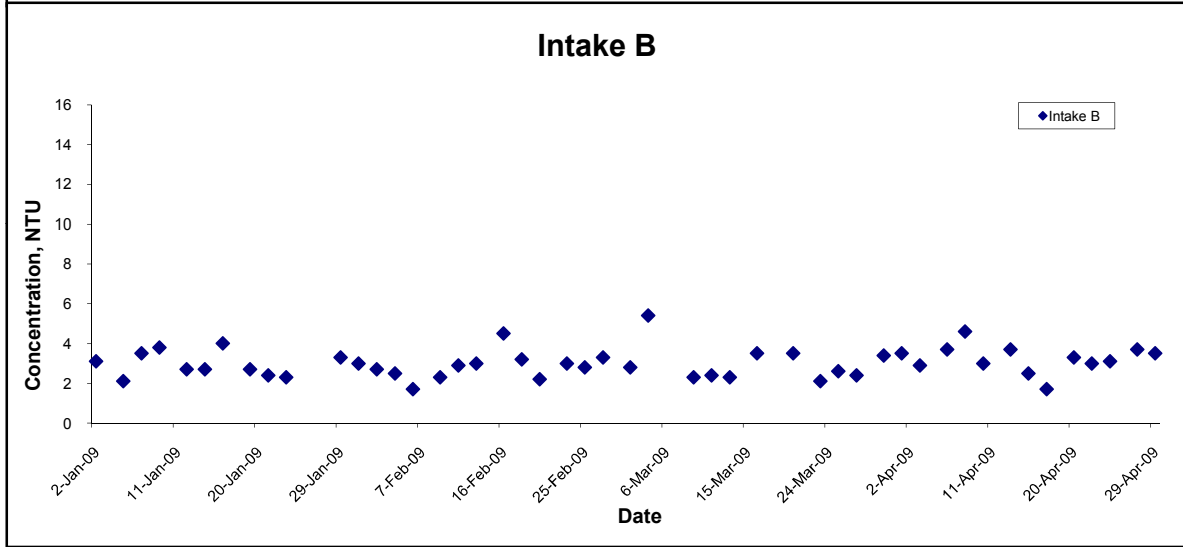
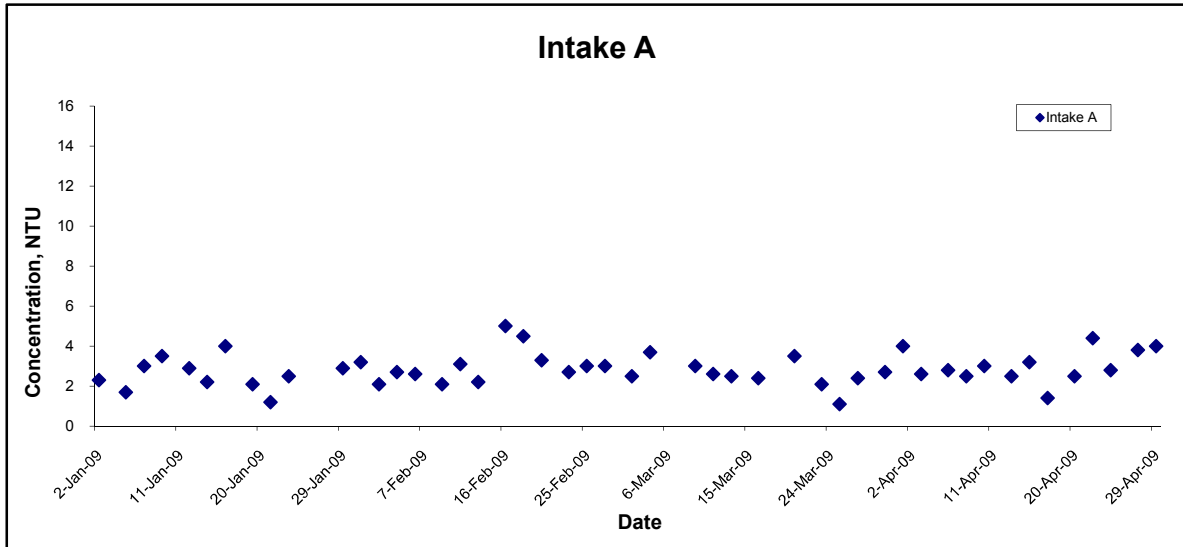
Turbidity (Depth-averaged) at Mid-Flood Tide



Title Contract No. DC/2007/10 Design and Construction of Hong Kong West Drainage Tunnel Graphical Presentation of Water Quality Monitoring Results	Scale	N.T.S	Project No.	MA8001
	Date	Apr 09	Appendix	H

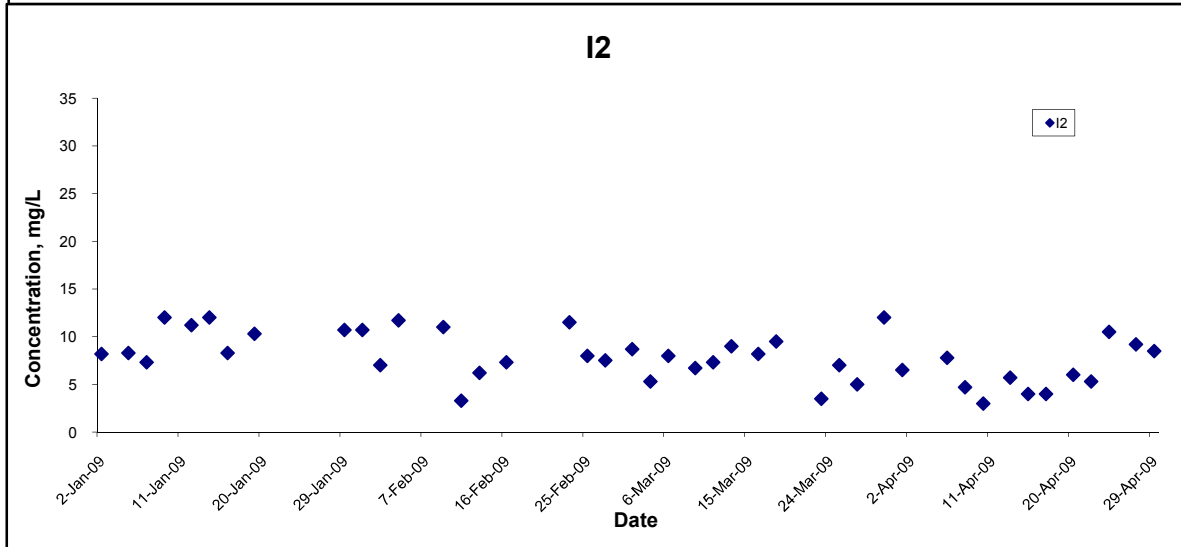
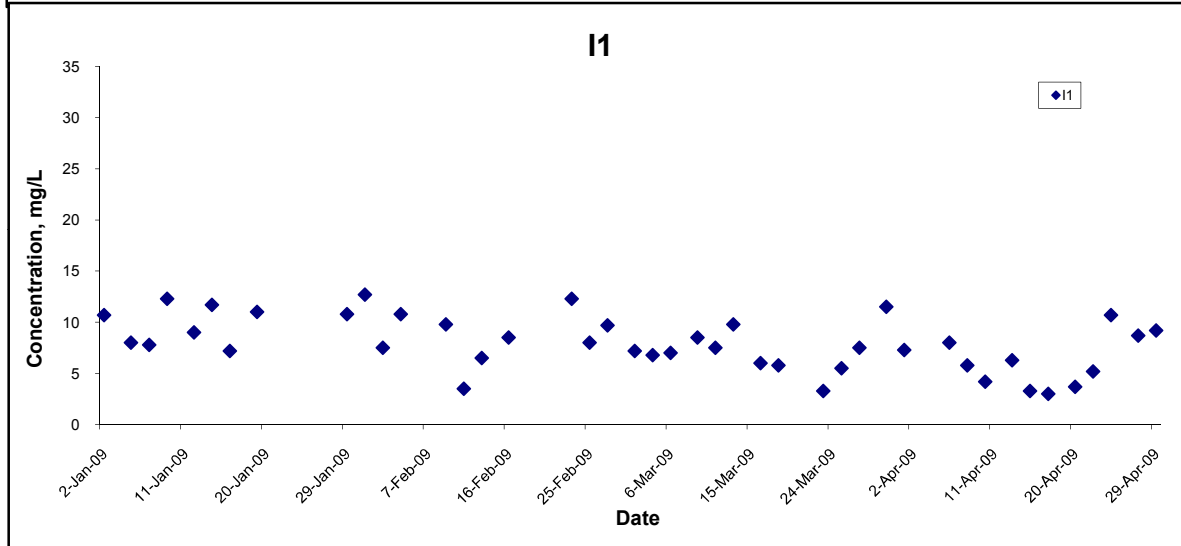
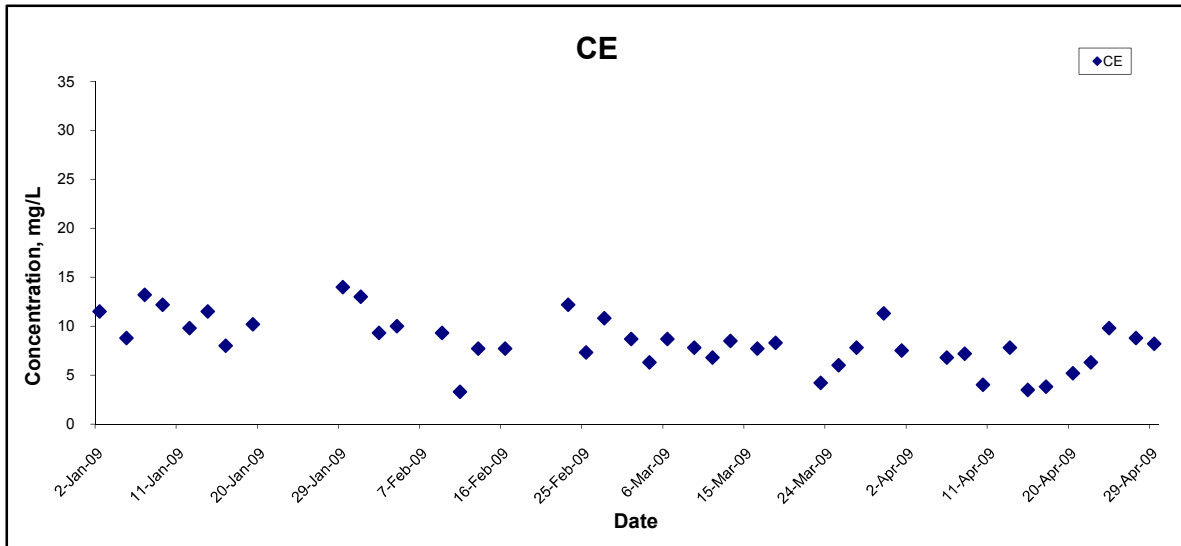
CINOTECH

Turbidity (Depth-averaged) at Mid-Flood Tide



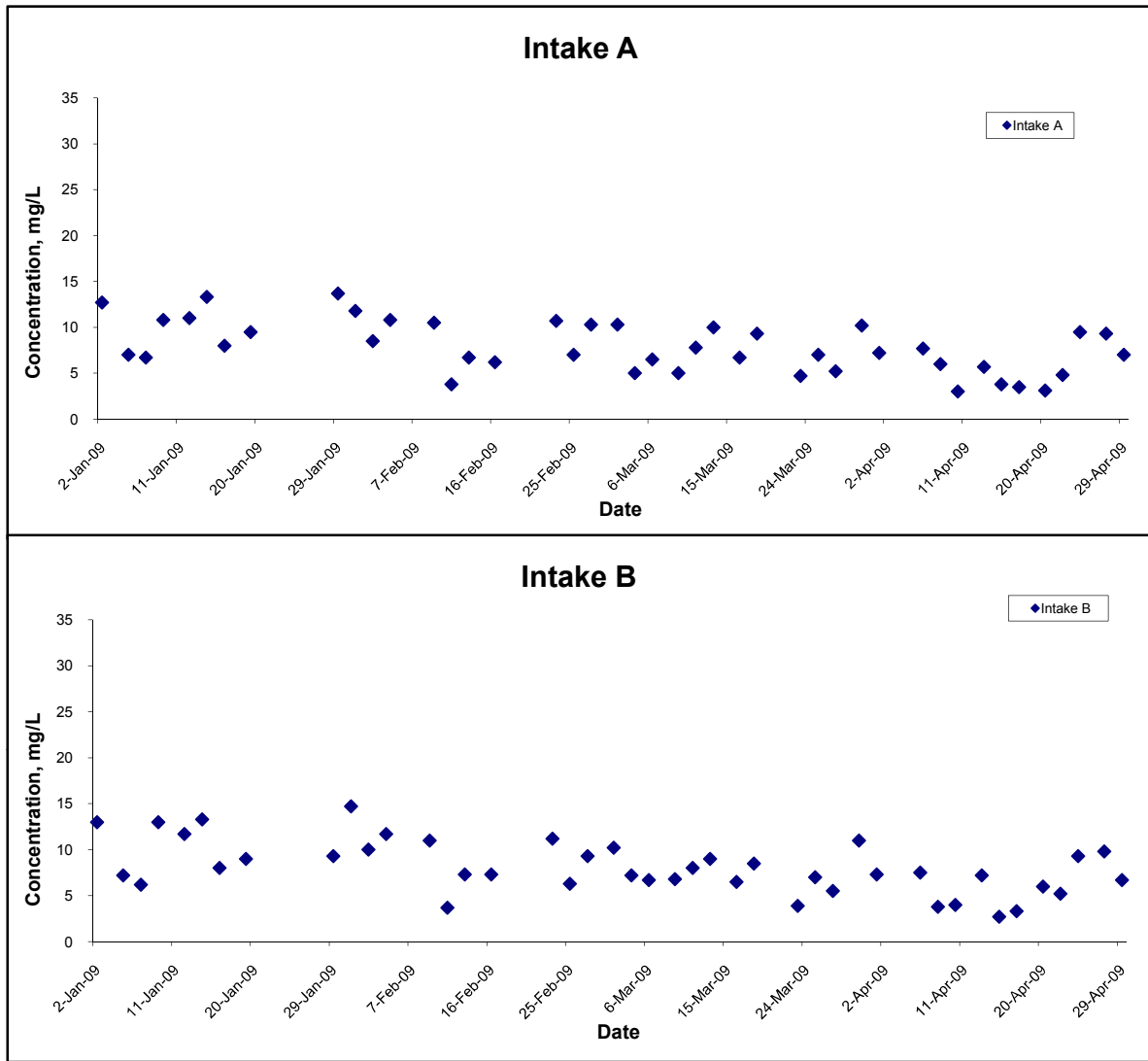
Title Contract No. DC/2007/10 Design and Construction of Hong Kong West Drainage Tunnel Graphical Presentation of Water Quality Monitoring Results	Scale N.T.S	Project No. MA8001	
	Date Apr 09	Appendix H	

Suspended Solids (Depth-averaged) at Mid-Ebb Tide



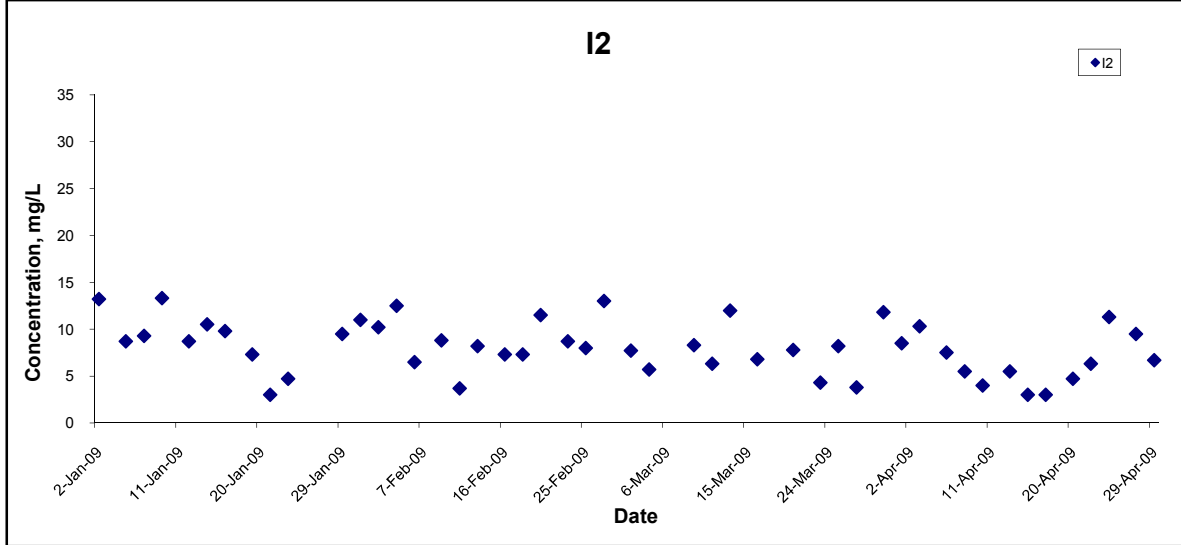
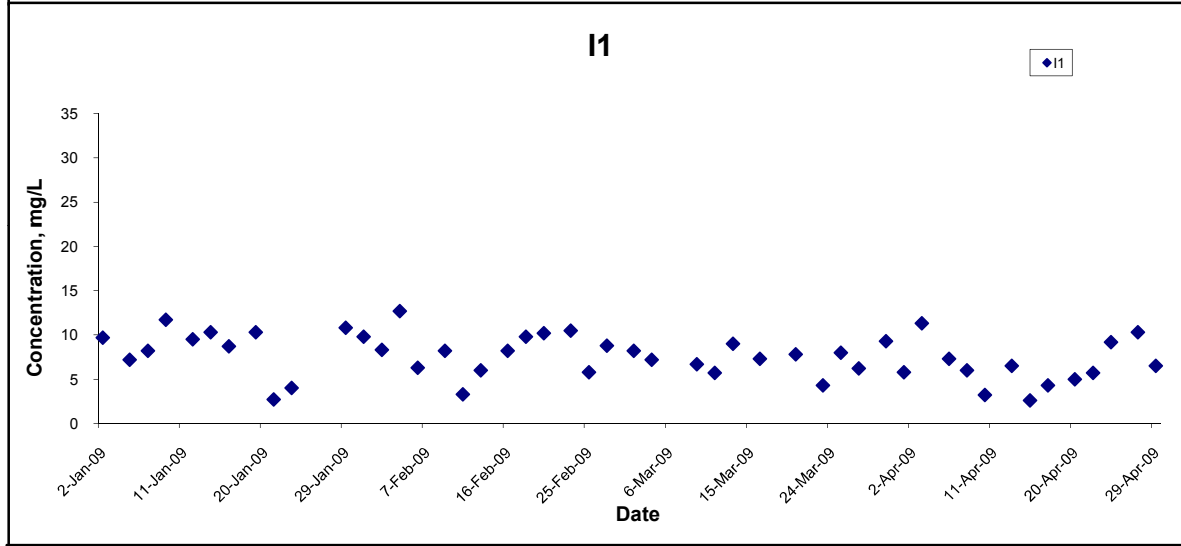
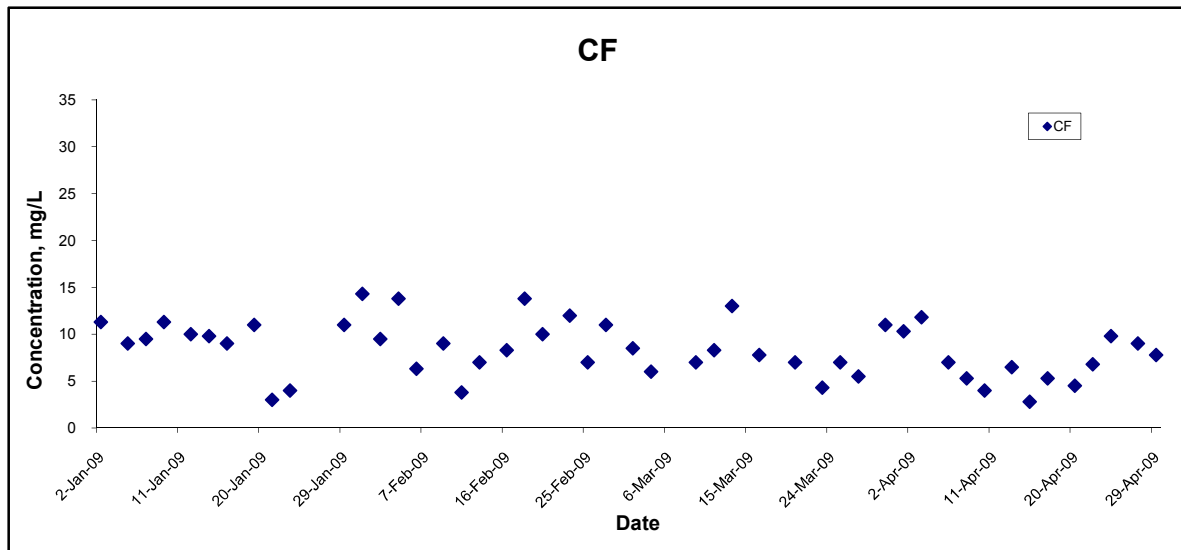
Title Contract No. DC/2007/10 Design and Construction of Hong Kong West Drainage Tunnel Graphical Presentation of Water Quality Monitoring Results	Scale N.T.S	Project No. MA8001	CINOTECH
	Date Apr 09	Appendix H	

Suspended Solids (Depth-averaged) at Mid-Ebb Tide



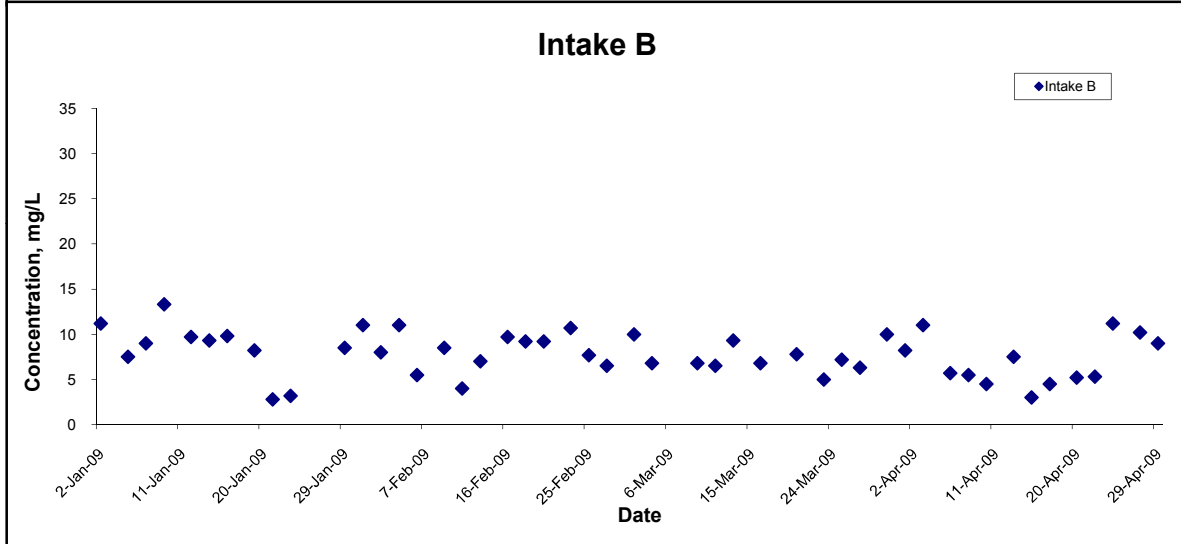
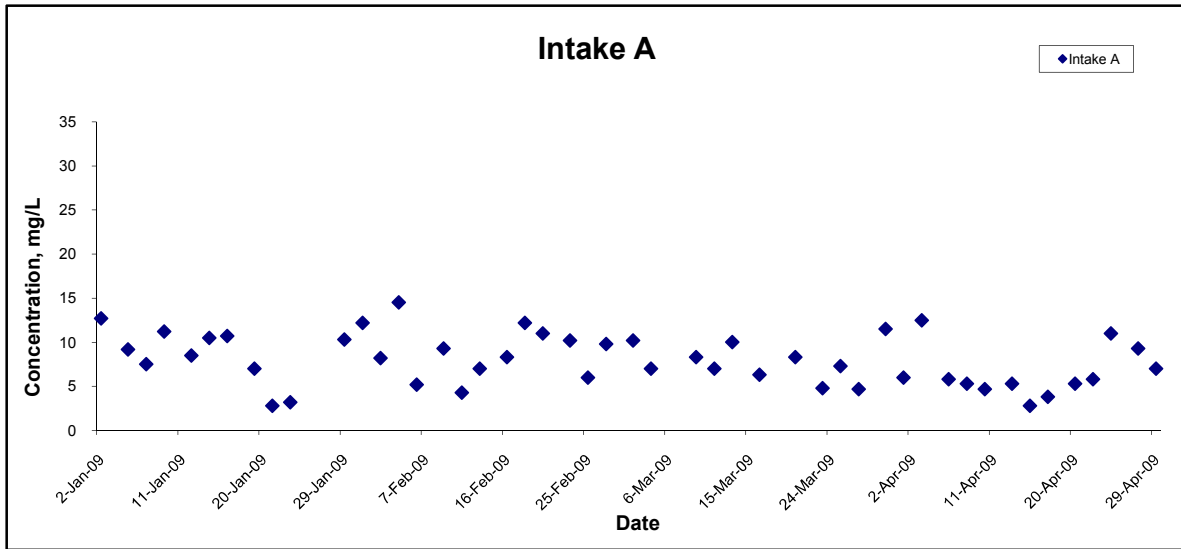
Title Contract No. DC/2007/10 Design and Construction of Hong Kong West Drainage Tunnel Graphical Presentation of Water Quality Monitoring Results	Scale	N.T.S	Project No. MA8001	CINOTECH
	Date	Apr 09	Appendix H	

Suspended Solids (Depth-averaged) at Mid-Flood Tide



Title Contract No. DC/2007/10 Design and Construction of Hong Kong West Drainage Tunnel Graphical Presentation of Water Quality Monitoring Results	Scale N.T.S	Project No. MA8001	
	Date Apr 09	Appendix H	

Suspended Solids (Depth-averaged) at Mid-Flood Tide



Title Contract No. DC/2007/10 Design and Construction of Hong Kong West Drainage Tunnel Graphical Presentation of Water Quality Monitoring Results	Scale N.T.S	Project No. MA8001	CINOTECH
	Date Apr 09	Appendix H	